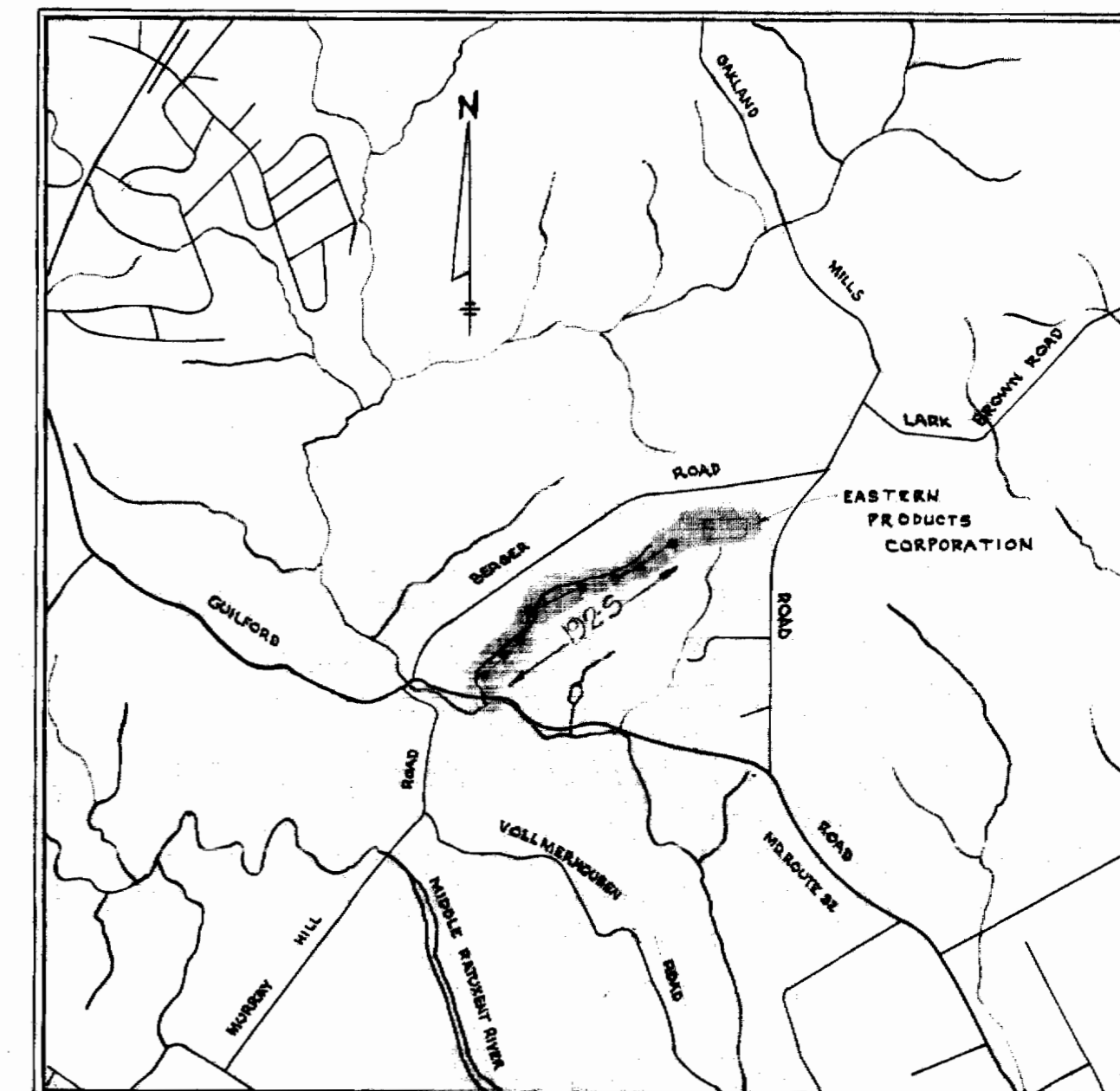


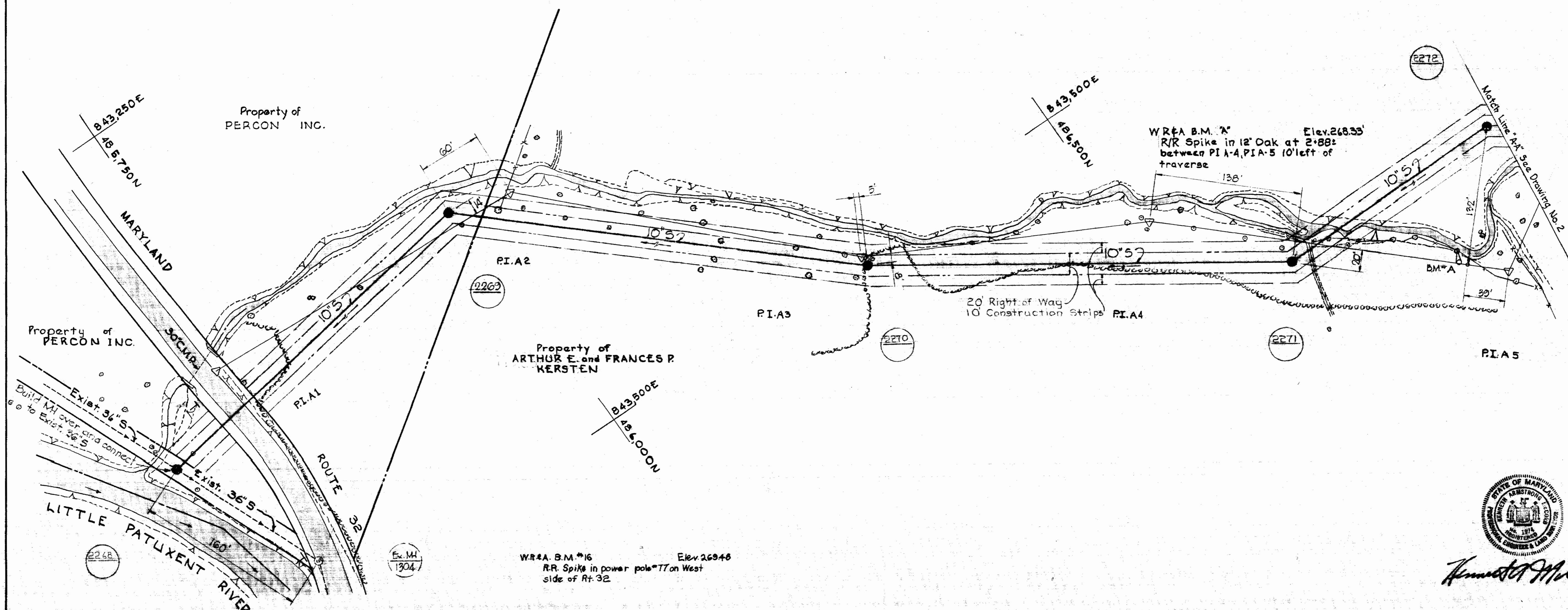
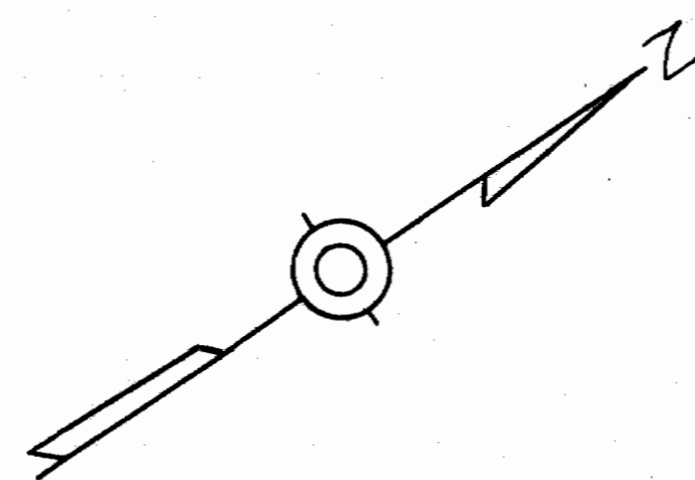
GENERAL NOTES

1. Approximate location of existing mains are shown. The Contractor shall take all necessary precautions to protect existing mains and services and maintain uninterrupted supply. Any damage incurred shall be repaired immediately.
2. All pipe elevations shown are invert elevations
3. The Contractor shall locate existing utilities a minimum of two weeks in advance of construction operations in vicinity of utilities.
4. For all standard details see standards in specifications.
5. Clear all utilities by a minimum of 6"; clear all poles by 2'-0" minimum or tunnel as required.
6. Build all manholes to 1'-6" above existing ground unless otherwise shown on drawings or directed by the Engineer.
7. The Contractor shall provide a joint in all sewer mains within 2'-0" of exterior manhole walls.
8. Coordinate values are shown in the Maryland State Grid System.



VICINITY MAP

Scale: 1" = 1/2 Mile

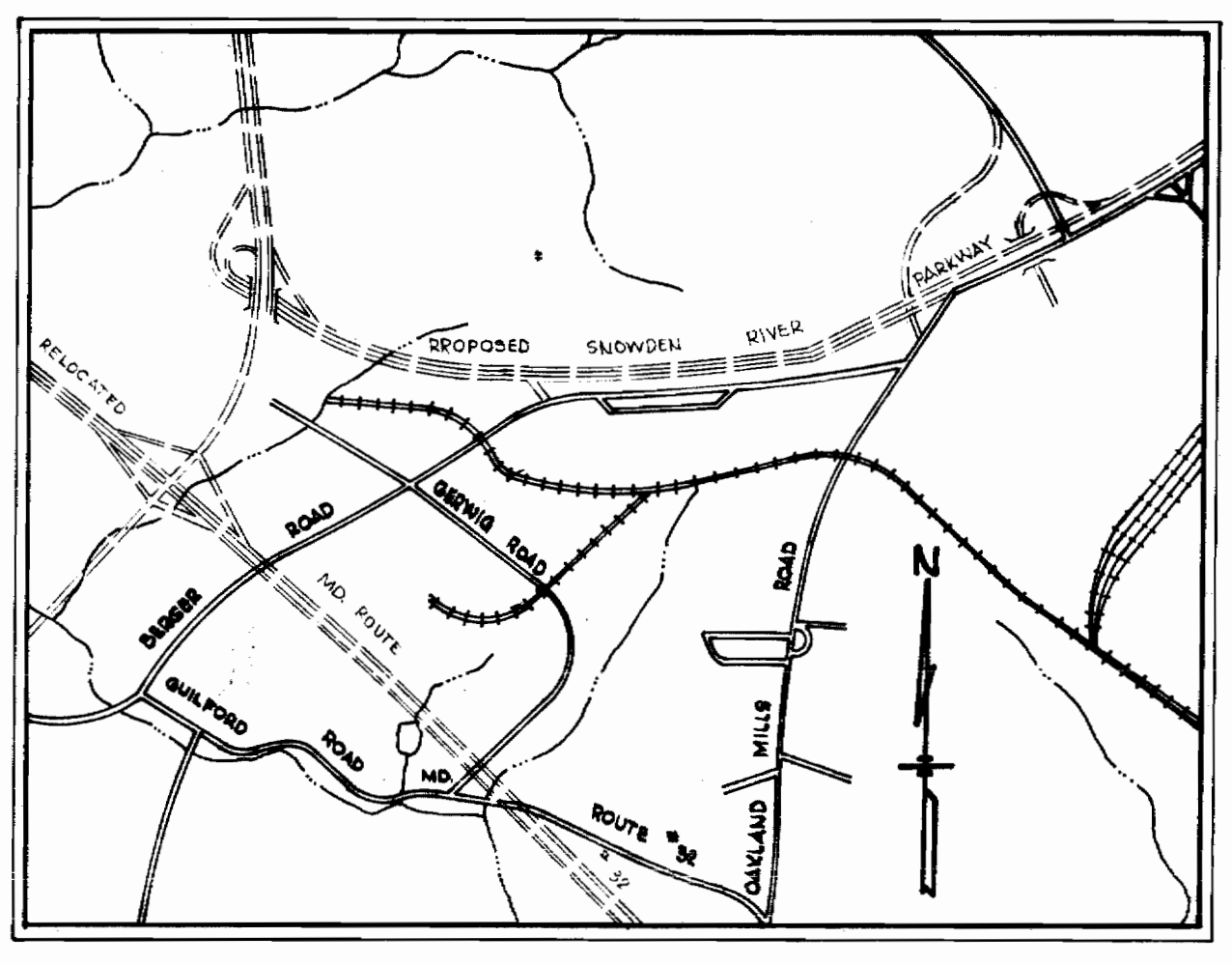
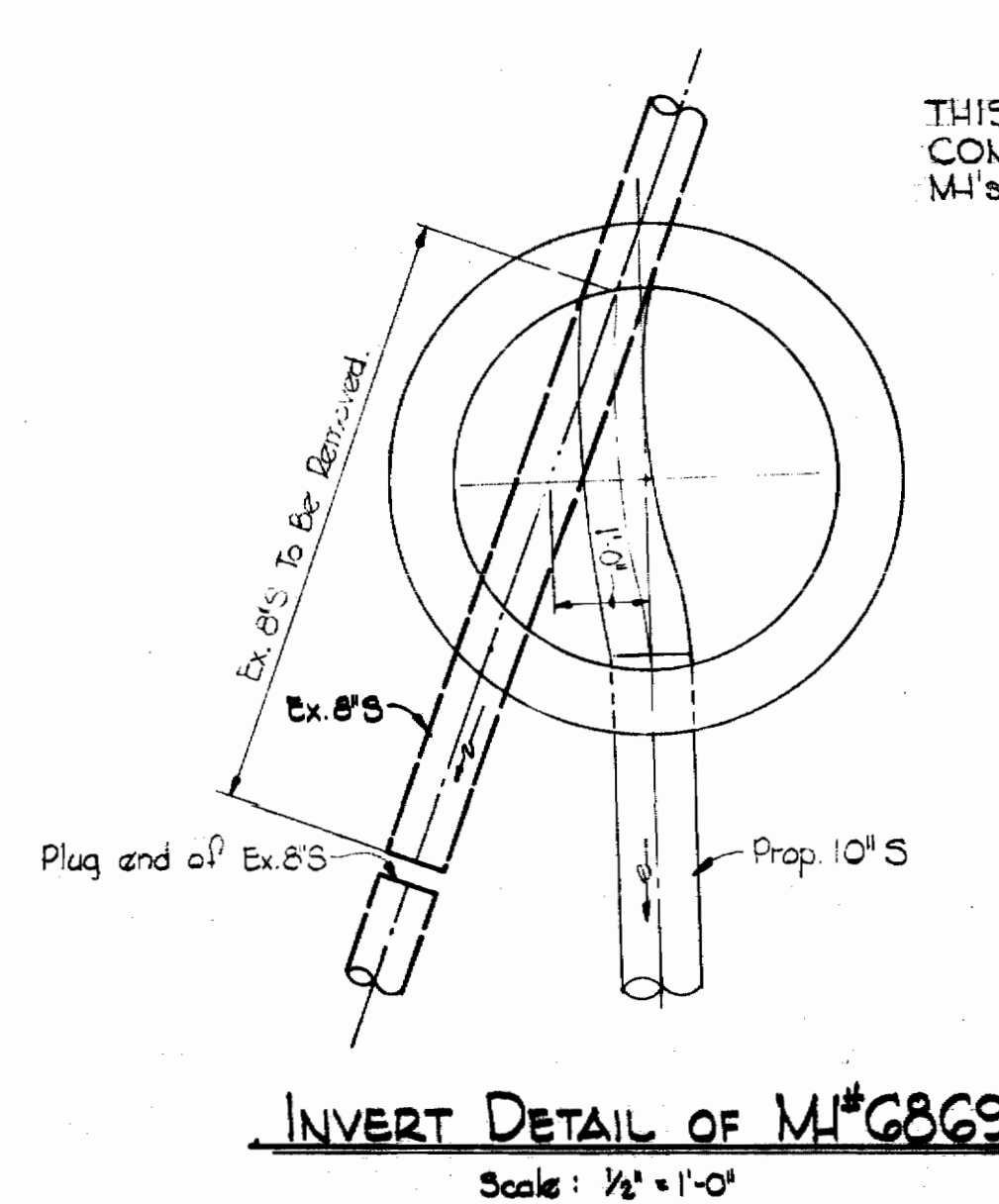
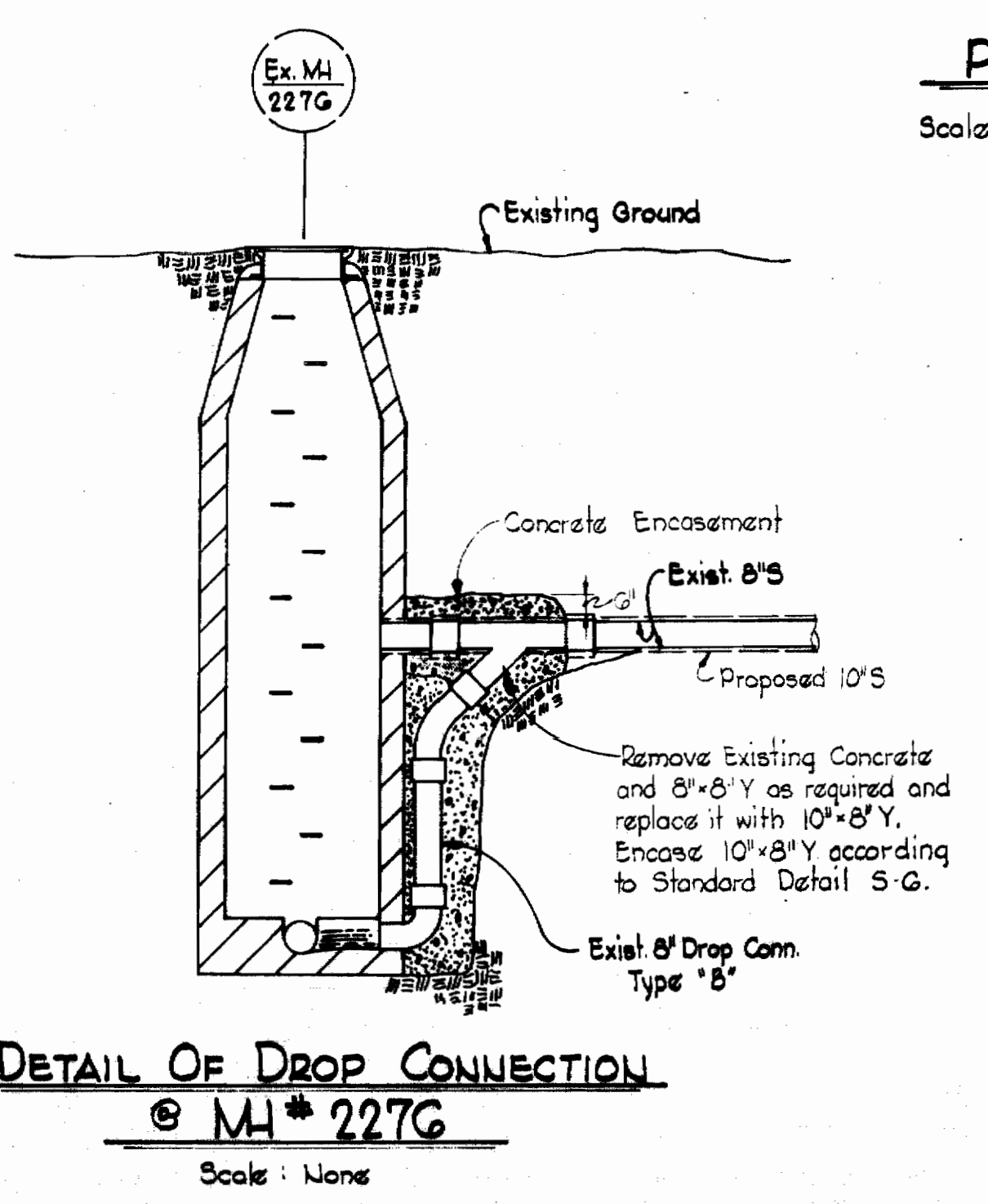
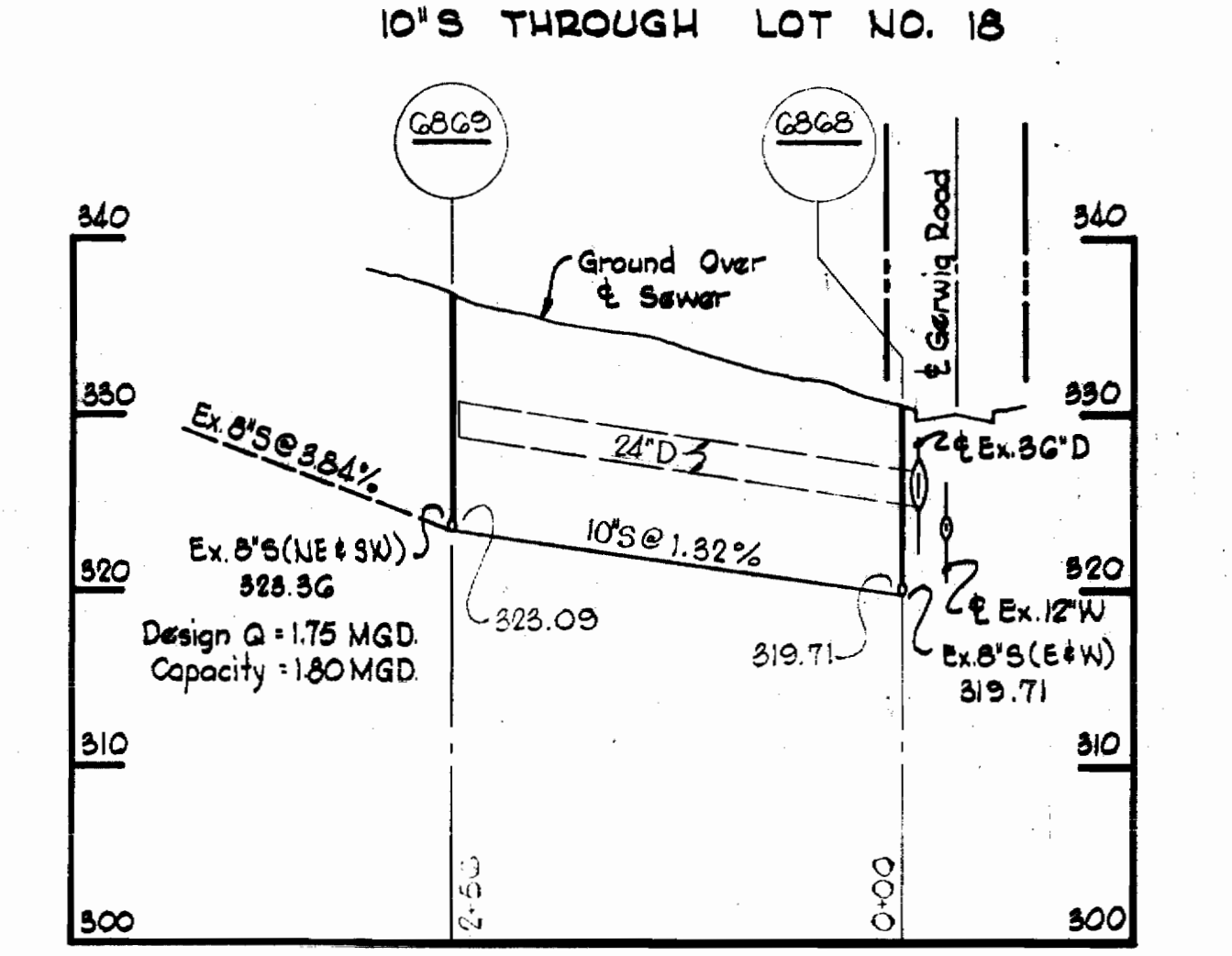
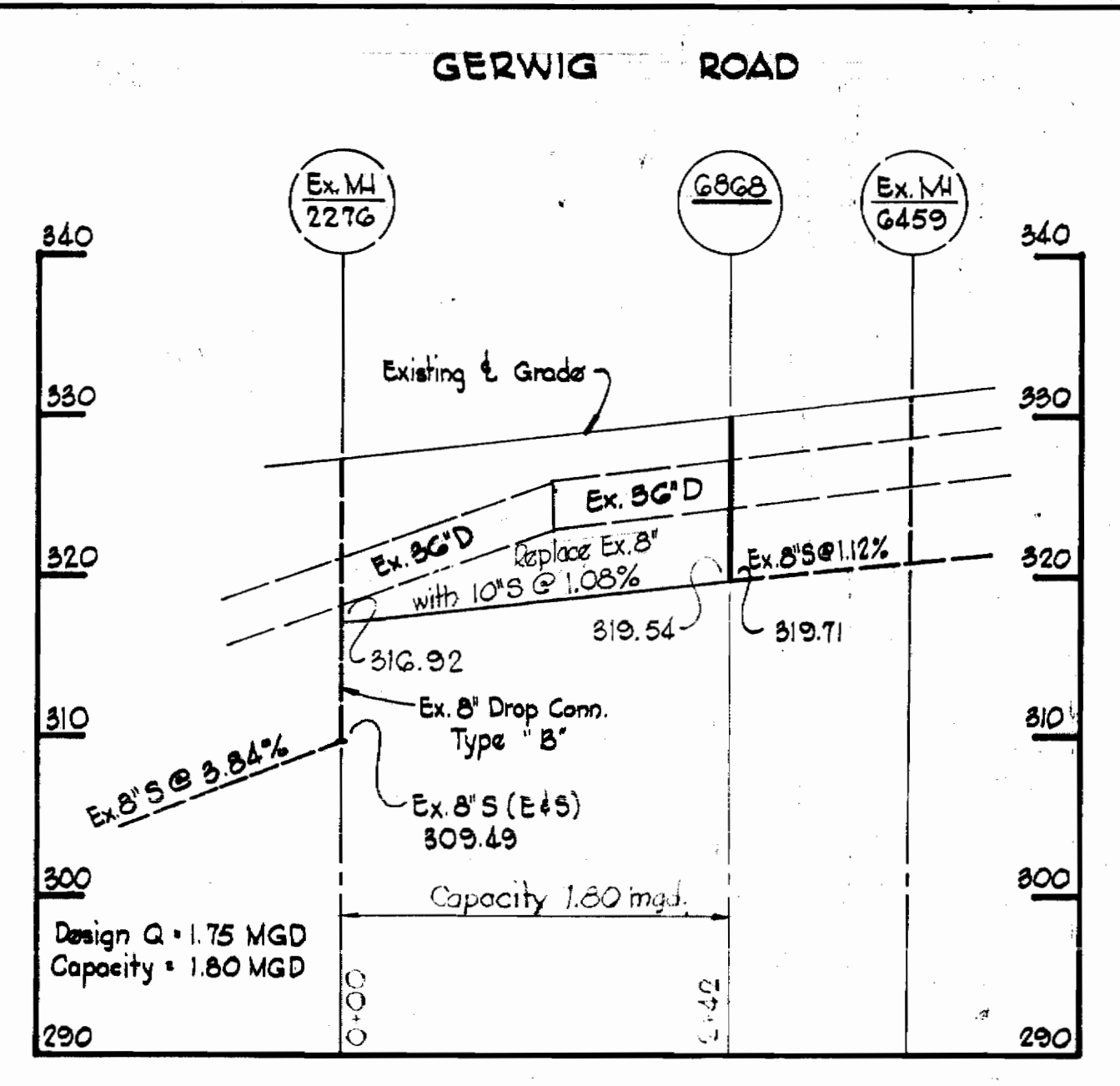
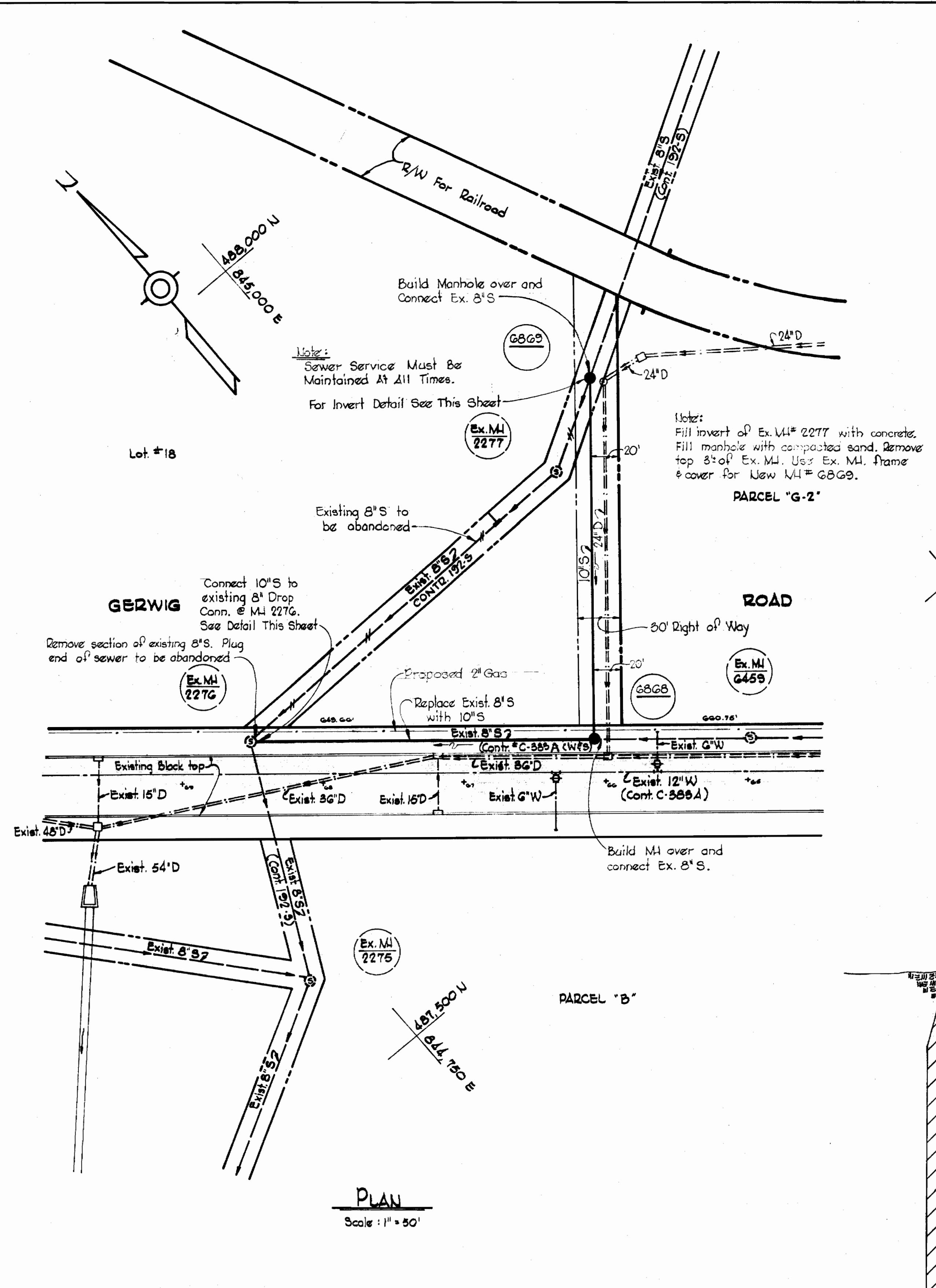


Harriet M. Melrod

Contract No. 192-S

WHITMAN, REQUARDT & ASSOCIATES ENGINEERS 1304 ST. PAUL ST. BALTIMORE, MARYLAND	HOWARD COUNTY METROPOLITAN COMMISSION DATE 10-10-67 <i>W. O. Melrod</i> CHIEF ENGINEER	CONTRACT NO. 192-S	PLAN OF SEWER MAINS	EASTERN PRODUCTS OUTFALL SEWER ELECTION DISTRICT-GUILFORD NO. 6	DRAWING NO. 1 OF 3	SCALE 1" = 50'
---	--	--------------------	------------------------	--	--------------------------	-------------------

192-S/1



VICINITY MAP
Scale: 1" = 1600'

GENERAL NOTES

1. Approximate location of existing mains are shown. The Contractor shall take all necessary precautions to protect existing mains and service and maintain uninterrupted supply. Any damage incurred shall be repaired immediately.
2. All pipe elevations shown are invert elevations.
3. The Contractor shall locate existing utilities a minimum of two weeks in advance of construction operations in vicinity of utilities.
4. For all standard details see standards bound in Specifications.
5. Clear all utilities by a minimum of 6', clear all poles by a 2'-0" minimum, or tunnel as noted, unless otherwise noted.
6. The Contractor shall provide a joint in all sewer mains within 2'-0" of exterior manhole walls.
7. All manholes shall be 4'-0" inside diameter.
8. All horizontal and vertical controls are based on Maryland State datum.
9. All Sewer Mains shall be Asbestos Cement Pipe Class 2400.

THIS DRAWING SUPERCEDES THAT PART OF CONTRACT 192-S, SHEET 2 OF 3 BETWEEN M.I.'S 2276 AND G869.



Kenneth H. Melrod

WHITMAN, REQUARDT & ASSOCIATES
ENGINEERS
1304 ST. PAUL ST.
BALTIMORE, MARYLAND

DEPARTMENT OF PUBLIC WORKS
HOWARD COUNTY, MARYLAND
DATE: 4-6-72
W. O. G597-2
CHIEF - BUREAU OF WATER AND SEWER

CONTRACT NO. 192 - S

PLAN AND PROFILE
OF SEWER MAINS

COLUMBIA
E.G.U. SUBDIVISION LOT NO. 18 & PARCEL "G-2"
ELECTION DISTRICT GUILFORD NO. 6

DRAWING NO. 1A
OF 3
SCALE AS SHOWN
487-488
487-484

192-S/1A

Property of
ARTHUR E. & FRANCES P. KERSTEN

WR4A B.M.*B. Elev. 318.438
RR Spike in 12" Hickory 8" Lt. of Sta.
0+30 Between P.I.*A10 & P.I.*A11

Encase in Concrete
Sta. 0+95 to 0+05

Encase in
Concrete
Sta. 1+15 to 1+62
P.I. A6

Encase in
Concrete
Sta. 2+37 to 2+81

Future relocated
Md. Route 32

Property of
THE LAUREL BOTTLE GAS CORP.

Property of
THE HOWARD RESEARCH AND DEVELOPMENT CORPORATION

REVISED
SEE CONTR 383-A
SHEET 1A of 6
JAN '72

WR4A B.M.*A25X Elev. 388.843
Power Pole G4E#359151 on
Berger Road

845,000E
488,00N

Property of
THE HOWARD RESEARCH AND DEVELOPMENT CORPORATION

P.I. A13

P.I. A14

EASTERN PRODUCTS
CORPORATION

F.F.
373.9
INC

Match Line "B-B" See This Drawing

P.I. A11

P.I. A12

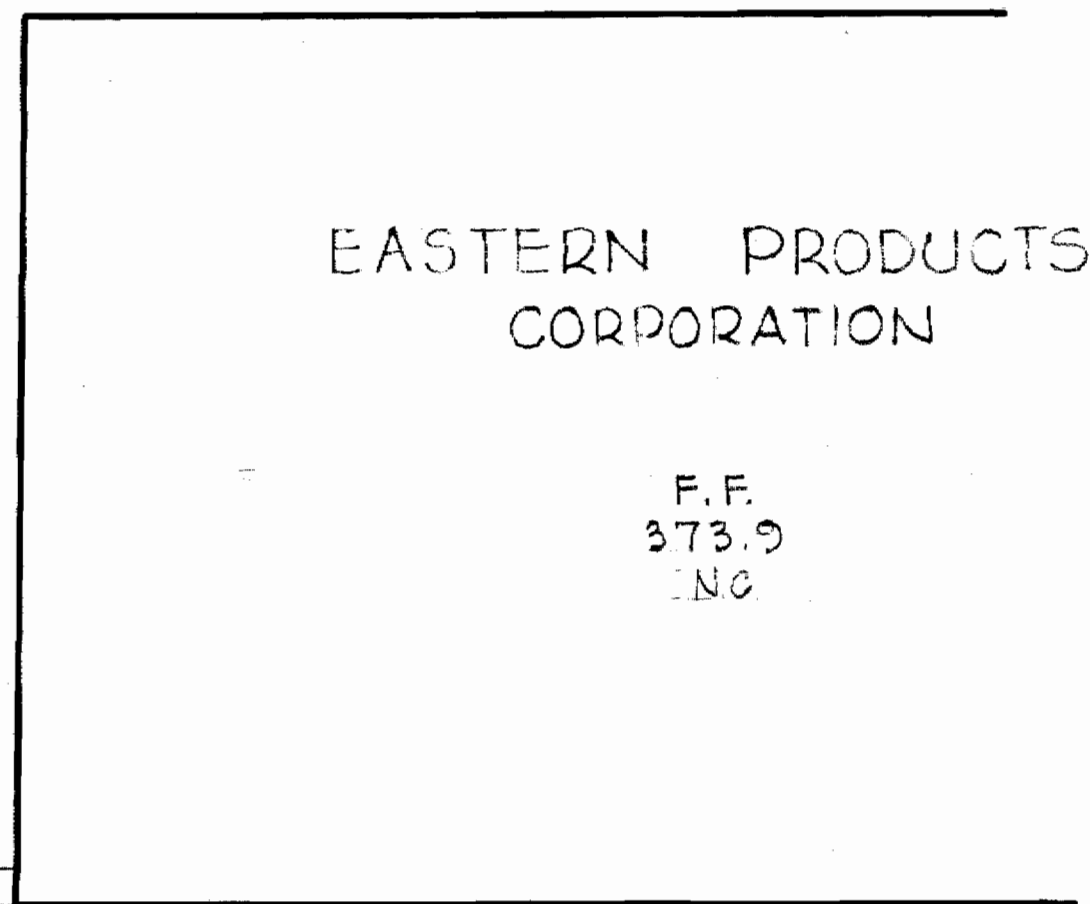
2+50 I
2" Pipe
From Spring
To Farm on
Rt. #32

20' Right of Way
10' Construction Strips

845,500E
487,750N

Sewer (by others)?

Future Building Addition



Kenneth A. Milne

Contract No. 192-S

WHITMAN, REQUARDT & ASSOCIATES
ENGINEERS
1304 ST. PAUL ST.
BALTIMORE, MARYLAND

HOWARD COUNTY METROPOLITAN COMMISSION
10-10-67 *W.O. Fallick*
DATE CHIEF ENGINEER

CONTRACT NO. 192-S

PLAN OF
SEWER MAINS

EASTERN PRODUCTS OUTFALL SEWER
ELECTION DISTRICT-GUILFORD NO. 6

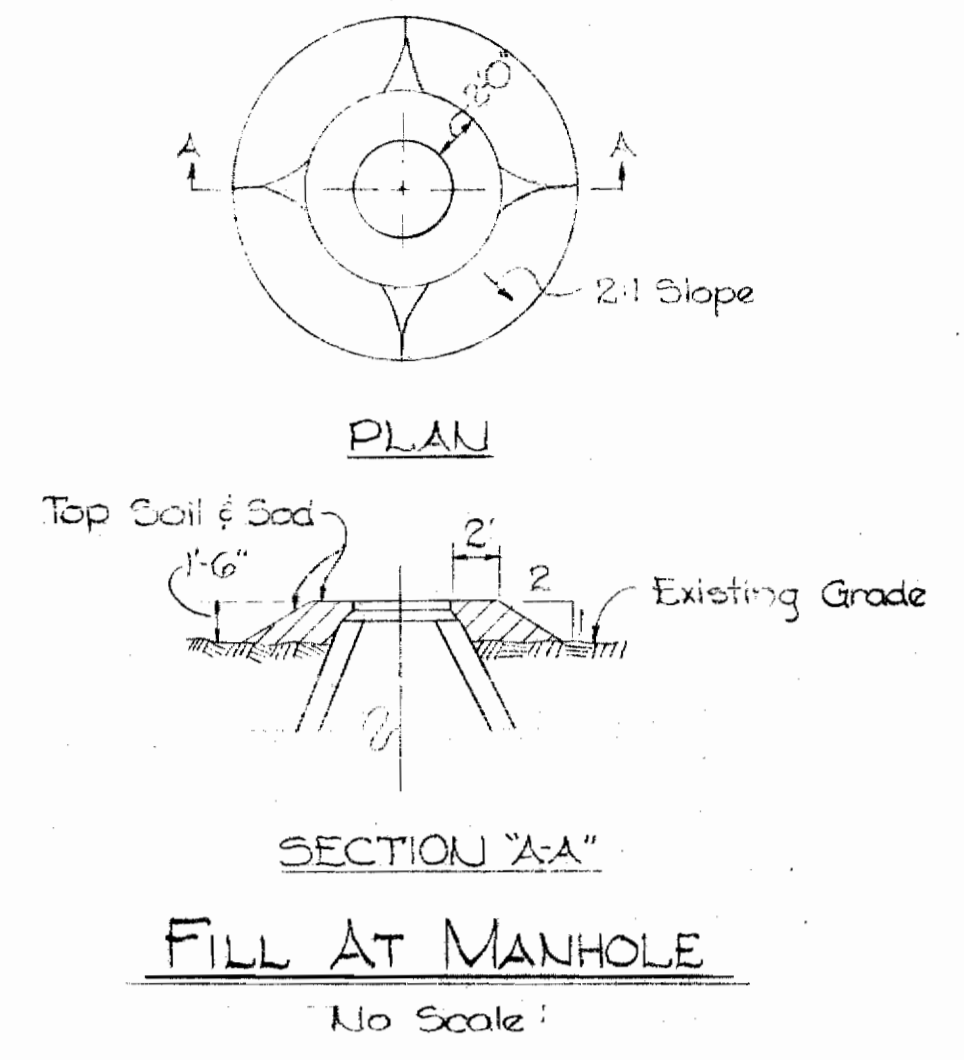
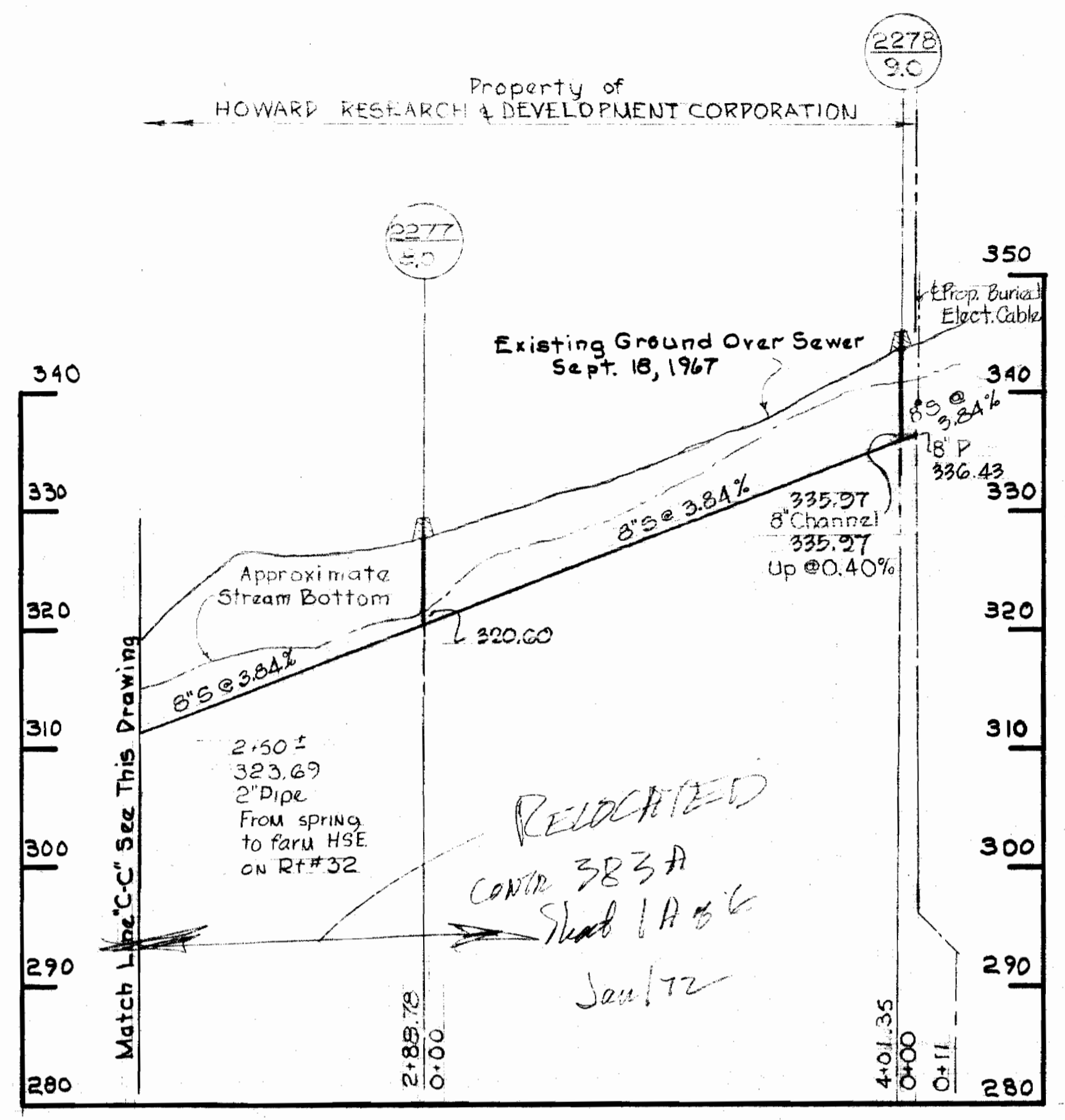
DRAWING
NO. 2
OF 3

SCALE
1"=50'

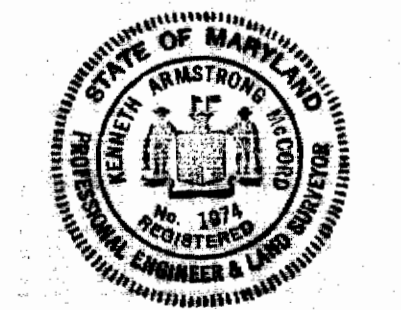
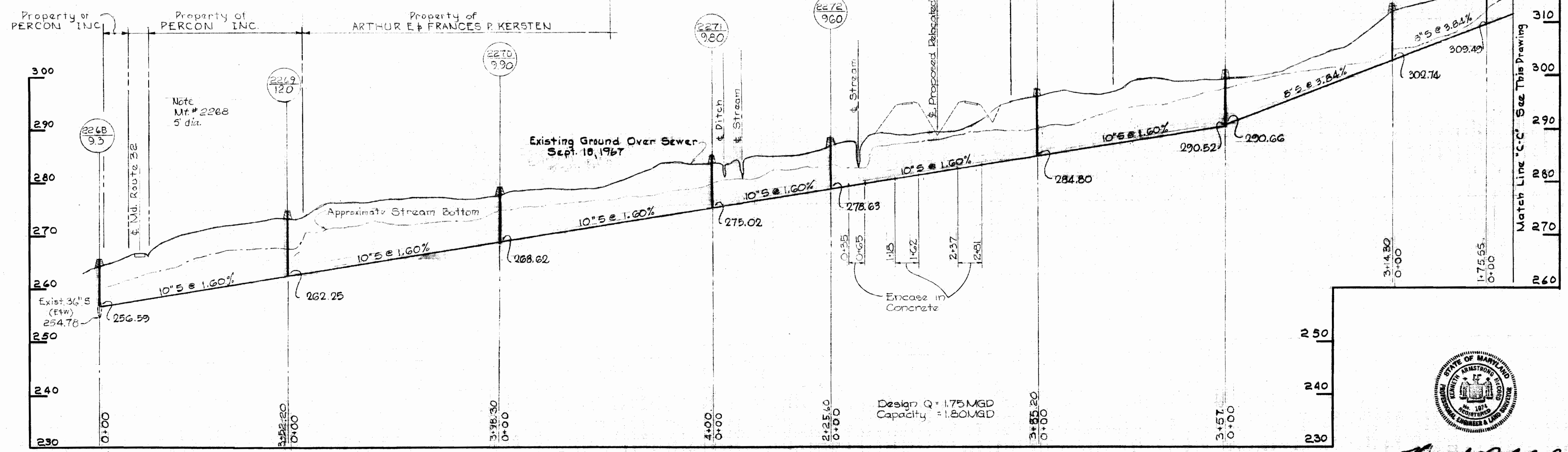
W. O. 5735-2

AS BUILT JUNE 17, 1968 FB. 3921

WS 192-S/2



Note:
All 10" pipe Concrete
All 8" pipe AC-CI 2400



Kenneth A. Mink

Contract No 192-S

WHITMAN, REQUARDT & ASSOCIATES ENGINEERS 1304 ST. PAUL ST. BALTIMORE, MARYLAND	HOWARD COUNTY METROPOLITAN COMMISSION 10-10-67 DATE <i>W. O. Libb</i> CHIEF ENGINEER	CONTRACT NO. 192-S	PROFILE OF SEWER MAINS	EASTERN PRODUCTS OUTFALL SEWER ELECTION DISTRICT-GUILFORD NO. 6	DRAWING NO. 3 OF 3 SCALE H: 1" = 100' V: 1" = 10'
---	--	--------------------	---------------------------	--	--

WS 192-S/3