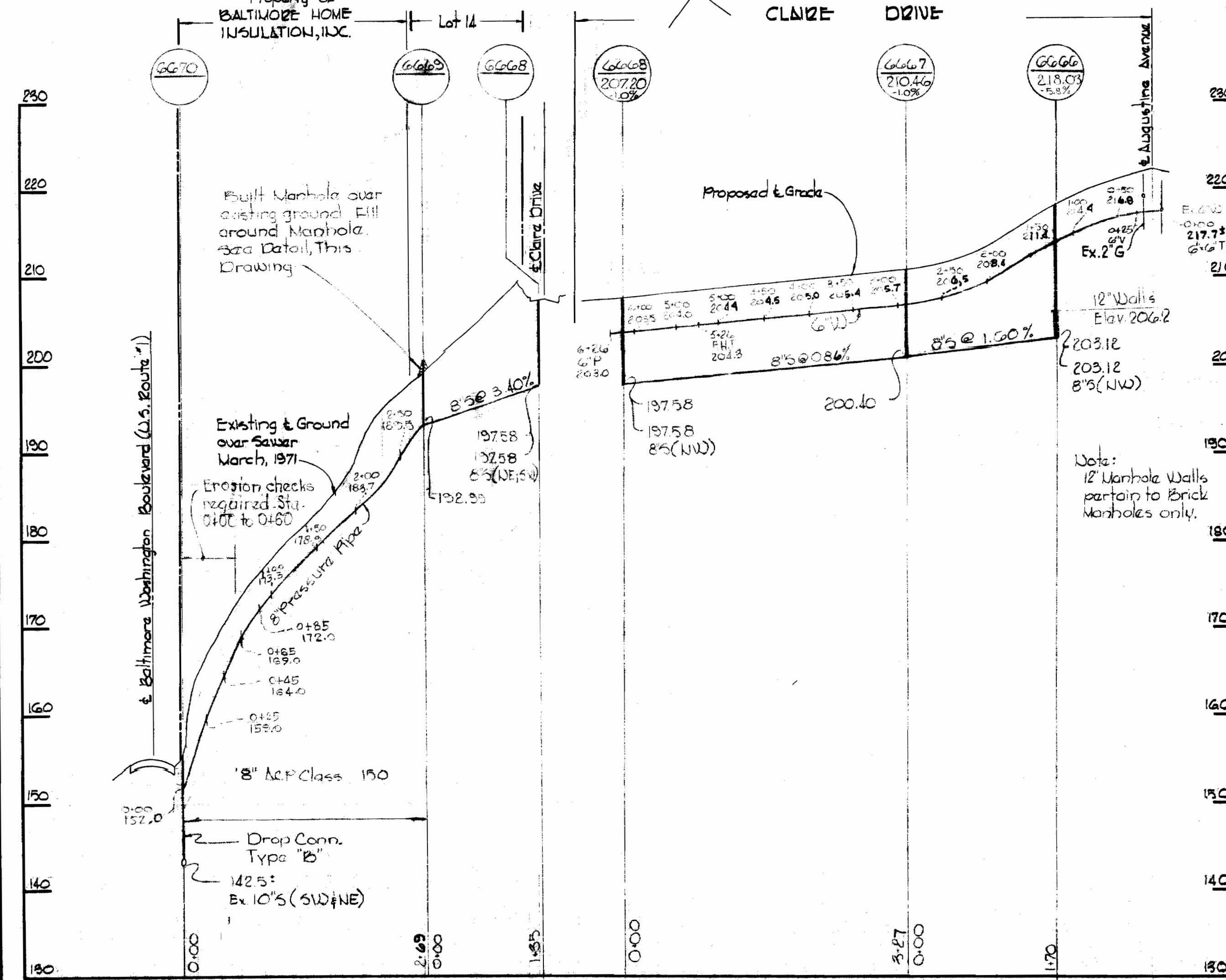


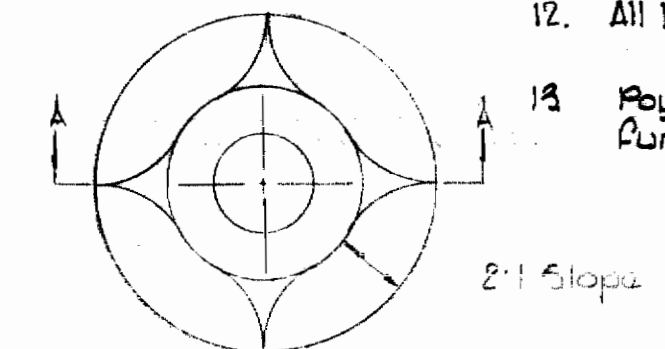
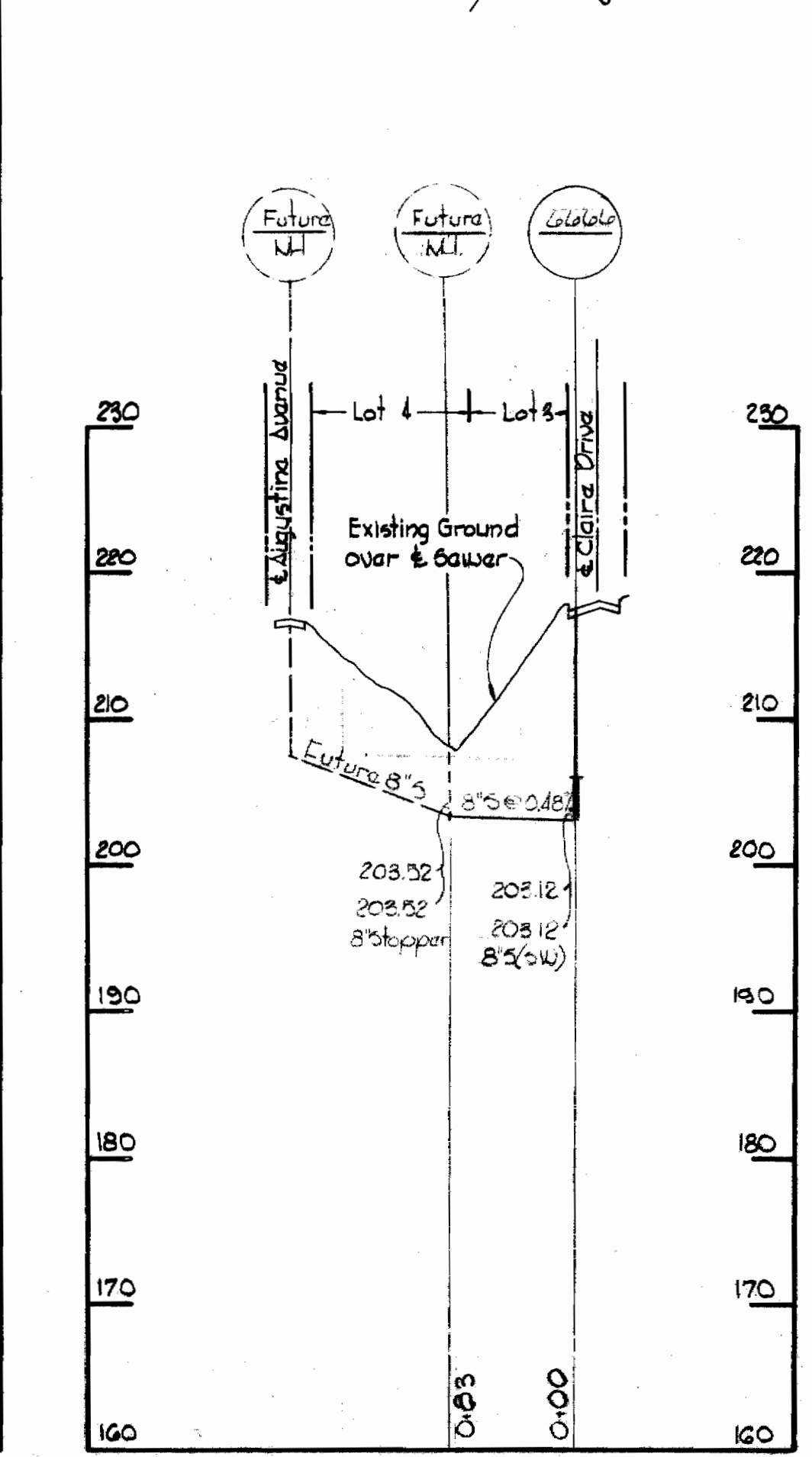
**VICINITY MAP**  
 Scale: 1" = 1/4 mile  
 Connect to Existing 6" Built under Contract No. W-108 & 30345-A.  
 W 12.5 W 20-B Elev. 224.28  
 22 1/2" Pipe Road G/E Pole #27004  
 @ Intersection of Augustine / Virginia Ave.

**GENERAL NOTES**

1. Approximate location of existing mains are shown. The Contractor shall take all necessary precautions to protect existing mains and services and maintain uninterrupted supply. Any damage incurred shall be repaired immediately.
2. All pipe elevations shown are invert elevations.
3. The Contractor shall locate existing utilities a minimum of two weeks in advance of construction operations in vicinity of utilities.
4. For all standard details see standards bound in Specifications.
5. All water mains shall have a minimum of 3.5' Cover.
6. Block all fittings with concrete, see standard details bound in specifications.
7. Bury line elevations on fire hydrants shall be set to the Elevations shown on the drawings.
8. All Fire Hydrants shall be strapped to the tree and buttressed with concrete in accordance with Standard Details.
9. Clear all utilities by a minimum of 6', clear all poles by 2'-0" minimum or tunnel as required.
10. All manholes shall be 4'-0" inside diameter.
11. The contractor shall provide a joint in all sewer mains within 2'-0" of exterior manhole walls.
12. All horizontal and vertical controls are based on Howard County Datum.
13. Payment for erosion checks will be included in prices bid for furnishing and laying pressure pipe.

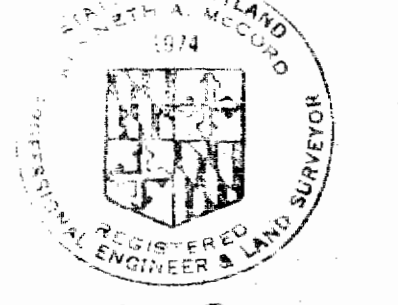


**PLAN**  
 Scale: 1" = 90'



**SECTION 'A-A'**  
 FILL AT MANHOLE  
 No scale

| QUANTITIES    |       |
|---------------|-------|
| 8" Sewer      | 1900' |
| 6" Water      | 650'  |
| Fire Hydrants | 1     |



*Anniston M. Wood*  
 Stakeout in FB# 4982  
 Diary in FB# 4932  
 Water Pipe: AC Class 150'  
 Sewer Pipe: AC Class 2400'

Contract No. 190 W-8

ES/102 06/1

|  |  |                             |  |   |                                 |                             |
|--|--|-----------------------------|--|---|---------------------------------|-----------------------------|
| <b>WHITMAN, REQUARDT &amp; ASSOCIATES</b><br>ENGINEERS<br>1304 ST. PAUL ST.<br>BALTIMORE, MARYLAND | <b>DEPARTMENT OF PUBLIC WORKS</b><br>HOWARD COUNTY, MARYLAND<br>3-29-71<br><i>W. O. Filbert</i><br>CHIEF - BUREAU OF WATER AND SEWER | <b>CONTRACT NO. 190 W-8</b> | <b>PLAN AND PROFILE OF</b><br><b>WATER &amp; SEWER MAINS</b> | <b>ELECTION DISTRICT</b><br><b>ELKRIDGE NO. 1</b> | <b>DRAWING</b><br>NO. 1<br>OF 1 | <b>SCALE</b><br>AS<br>SHOWN |
|  |  |                             |  |   | W. O. 6024-2                    |                             |