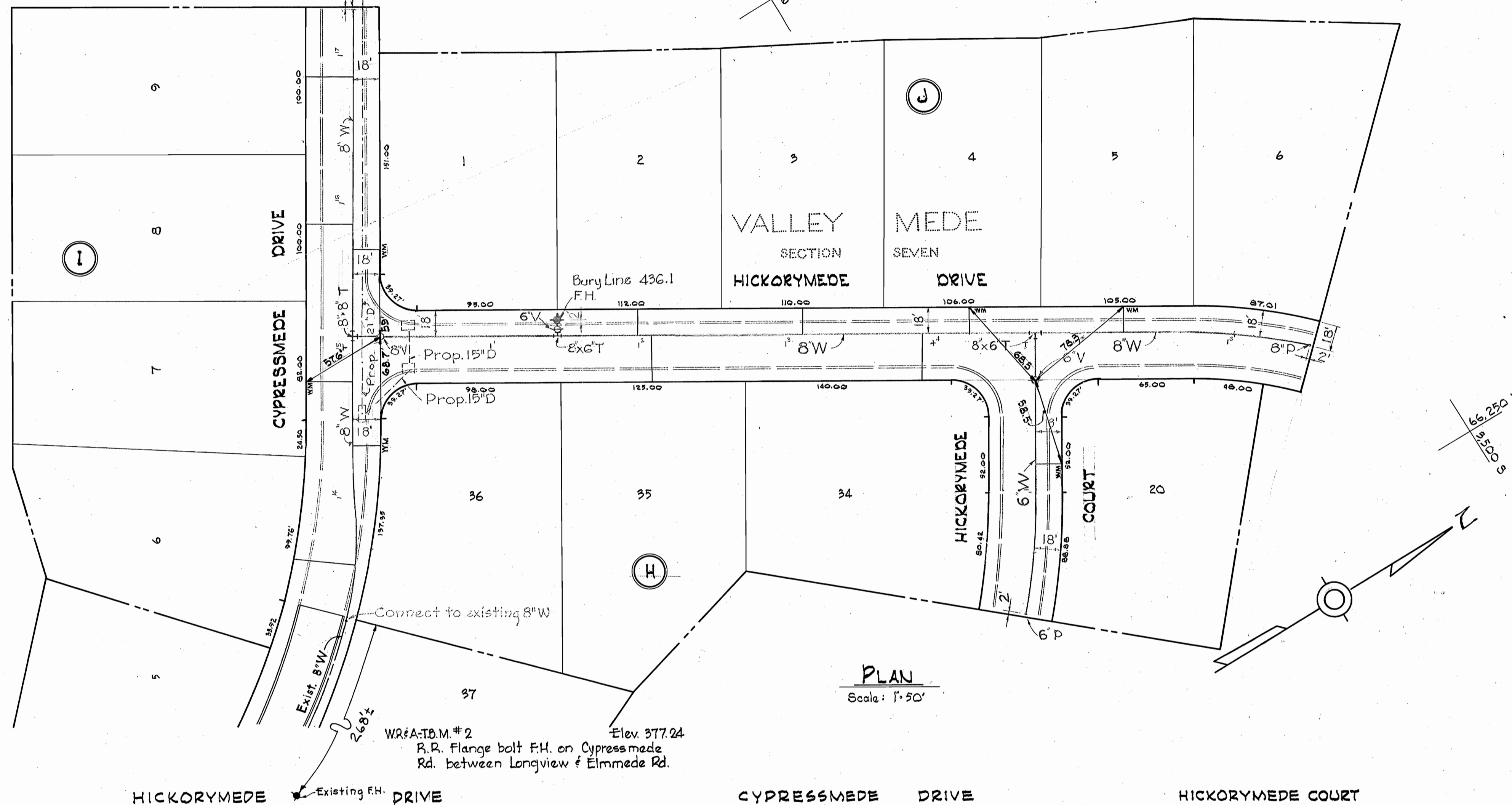


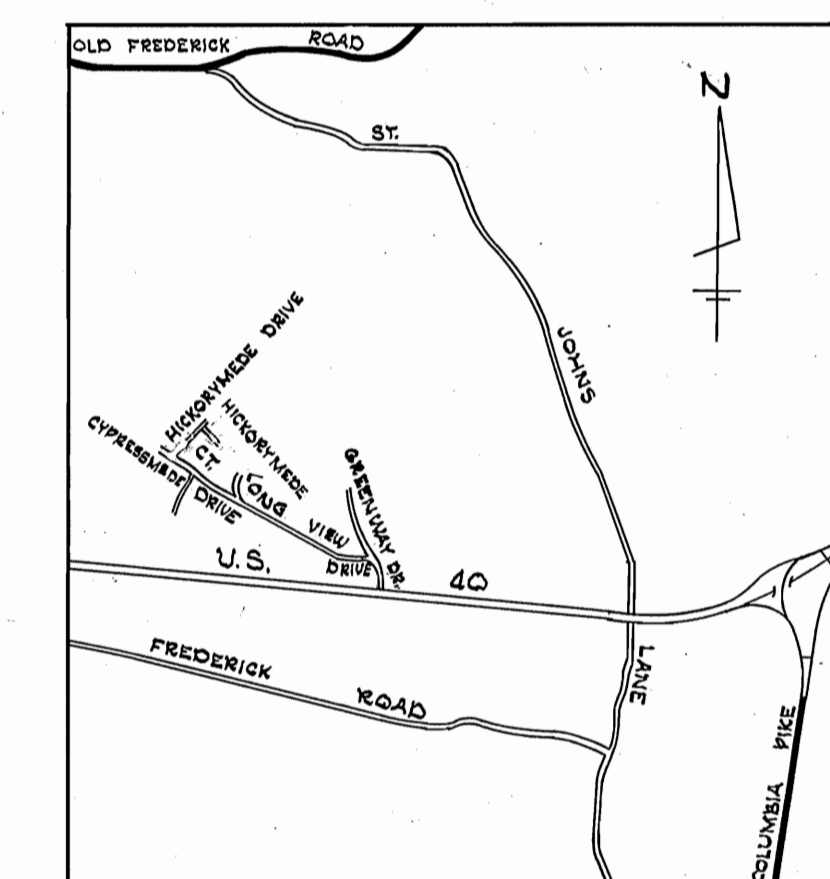
WR&A T.B.M.#1 Elev. 423.38
 R.R. spike in root of 16" Locust approx.
 200' South of \pm 16+90 (Cypressmede)
 @ edge of woods.



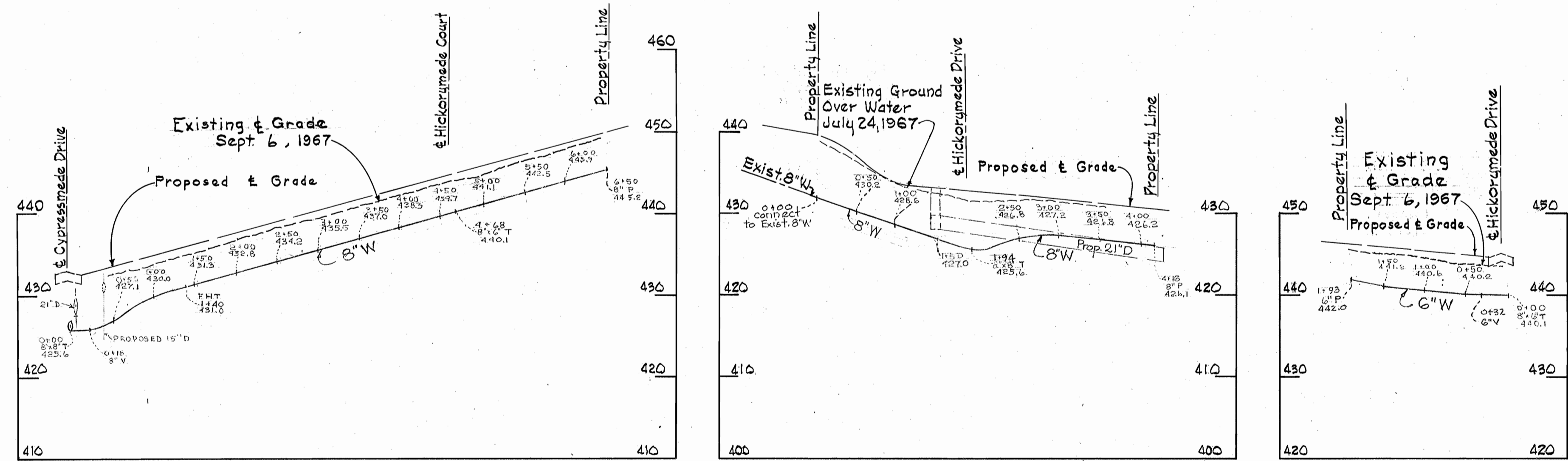
PLAN
 Scale: 1" = 50'

GENERAL NOTES

1. Approximate location of existing mains are shown. The Contractor shall take all necessary precautions to protect existing mains and services and maintain uninterrupted supply. Any damage incurred shall be repaired immediately.
2. All pipe elevations shown are invert elevations.
3. The Contractor shall locate existing utilities a minimum of two weeks in advance of construction operations in vicinity of utilities.
4. For all standard details see standards bound in Specifications.
5. All water mains to be C.I.P. or D.I.R. and have a minimum of 3 1/2' cover.
6. Block all fittings with concrete, see standard details bound in Specifications.
7. Bury line elevations on fire hydrants shall be set the same as edge of paving, top of curb, or as directed by the Engineer in the field.
8. All Fire Hydrants shall be buttressed with concrete in accordance with Standard Detail W-4.
9. Clear all utilities by a minimum of 6', clear all poles by 2'-0" minimum or tunnel as required.



VICINITY MAP
 Scale: 1" = 1/2 mile



PROFILE
 Hor. 1" = 100'
 Ver. 1" = 10'



Kenneth A. Alford
 Contract No. 189-W

WHITMAN, REQUARDT & ASSOCIATES ENGINEERS 1304 ST. PAUL ST. BALTIMORE, MARYLAND	HOWARD COUNTY METROPOLITAN COMMISSION 8-9-67 <i>W. O. Kilbert</i> CHAIRMAN	CONTRACT NO. 189-W	PLAN AND PROFILE OF WATER MAINS	ELECTION DISTRICT ELLICOTT CITY NO. 2	DRAWING NO. 1 OF 1 SCALE AS SHOWN 45 SW 45
---	---	--------------------	------------------------------------	--	--

W. O. 5129-2

AS BUILT 14 SEPT. 1967

F.B. 3158

WS 189-W/1 SW