

VICINITY MAP  
Scale: 1" = 1/2 Mile

8-26-68	Added Manhole No. 2628-A
No.	Date
	Revision

**GENERAL NOTES**

- Approximate location of existing mains are shown. The Contractor shall take all necessary precautions to protect the existing mains and services and maintain uninterrupted supply. Any damage incurred shall be repaired immediately.
- All pipe elevations shown are invert elevations.
- The Contractor shall locate existing utilities a minimum of two weeks in advance of construction operations in vicinity of utilities.
- For all standard details, see Standards bound in Specifications.
- All sewer mains shall be V.C.R.X., C.S.P.X., or Asbestos Cement Class 2400 unless otherwise noted.
- Build all M's to existing ground or paving unless otherwise shown or directed by the Engineer.
- House connections shall be constructed only where and if directed by the Engineer in the field.
- All 8" C.I. sewer pipe to be Class 22 or B'D.I. sewer pipe Class 2 unless otherwise noted.
- Manholes shown with 12" and 16" walls are for brick manholes only.
- Clear all utilities by a minimum of 6', clear all poles by 2'-0" minimum or tunnel as required.
- Cost of Grooted Rip Rap to be included in the unit price bid for furnishing and laying of sewer mains.
- The Contractor shall provide a joint in all sewer mains within 2'-0" of exterior manholes walls.
- Elevations are based upon Howard County datum.
- Cost for Erosion Checks and Concrete Anchors to be included in the price bid for Lump Sum Item No. B-14.

WHITMAN, REQUARDT & ASSOCIATES  
ENGINEERS  
1304 ST. PAUL ST.  
BALTIMORE, MARYLAND

HOWARD COUNTY METROPOLITAN COMMISSION  
DATE: 5-15-68  
CHIEF ENGINEER

CONTRACT NO. 184-S

PLAN OF SEWER MAINS

ELICOTT CITY-WILTON FARM ACRES  
ELECTION DISTRICT-ELICOTT CITY NO.2

DRAWING NO. 1 OF 4  
SCALE 1"=50'

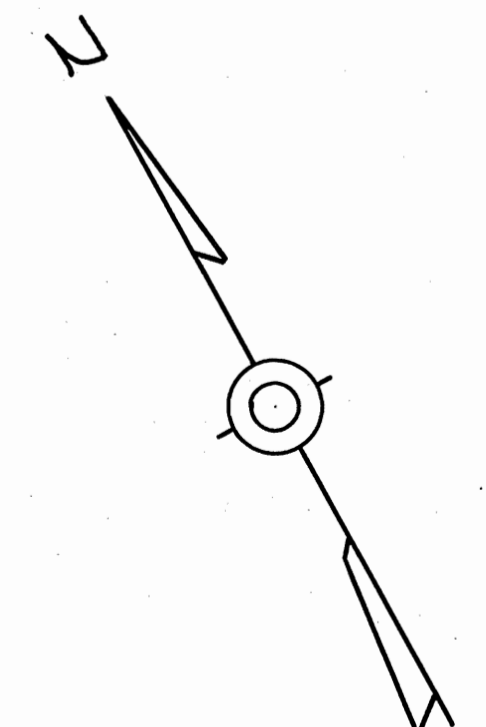
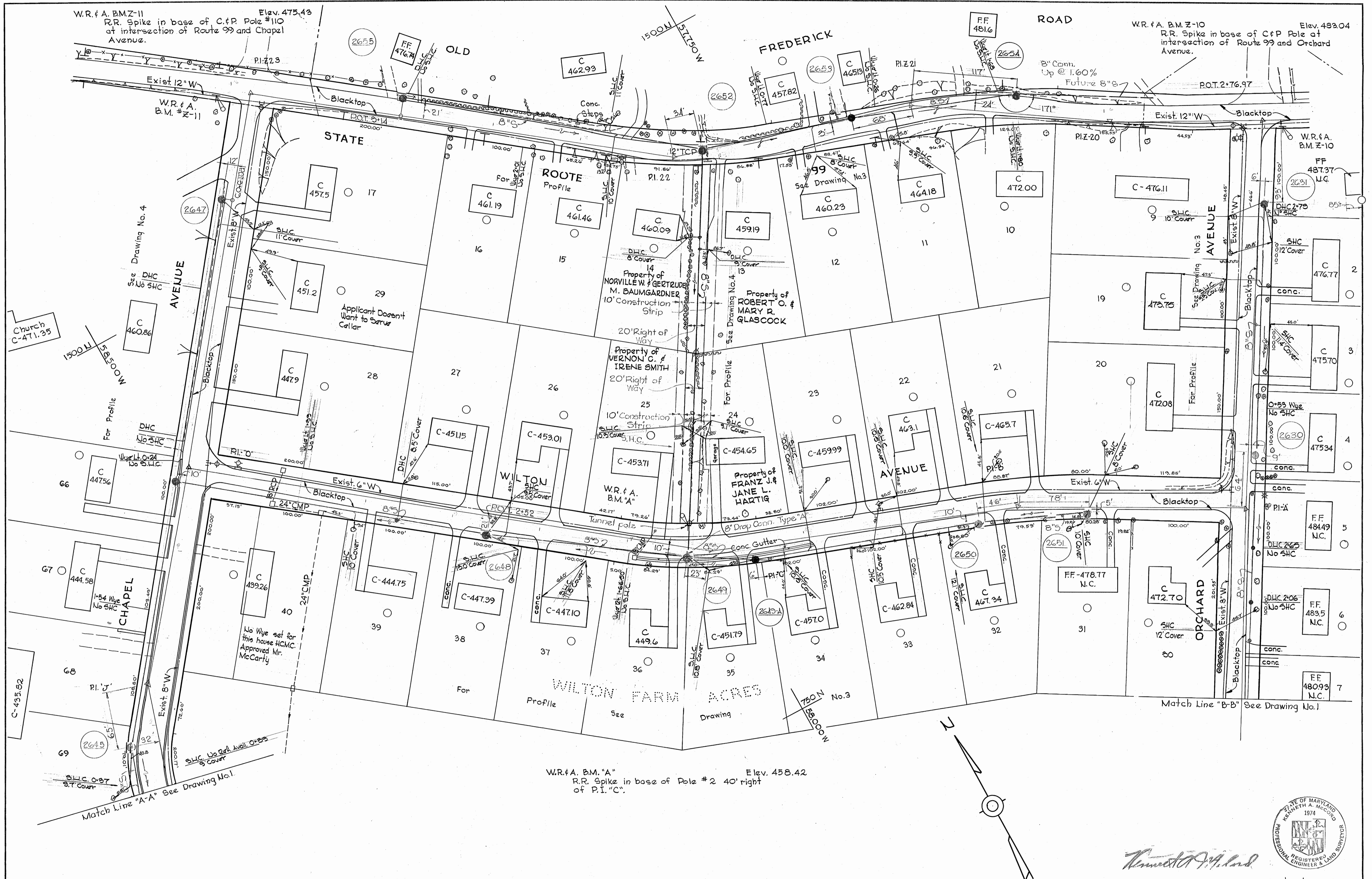
W. O. 5039-2

January 7, 1969  
AS BUILT



Contract No. 184-S

WS 184-S/1



*Kenneth A. McCord*

Contract No. 184-S

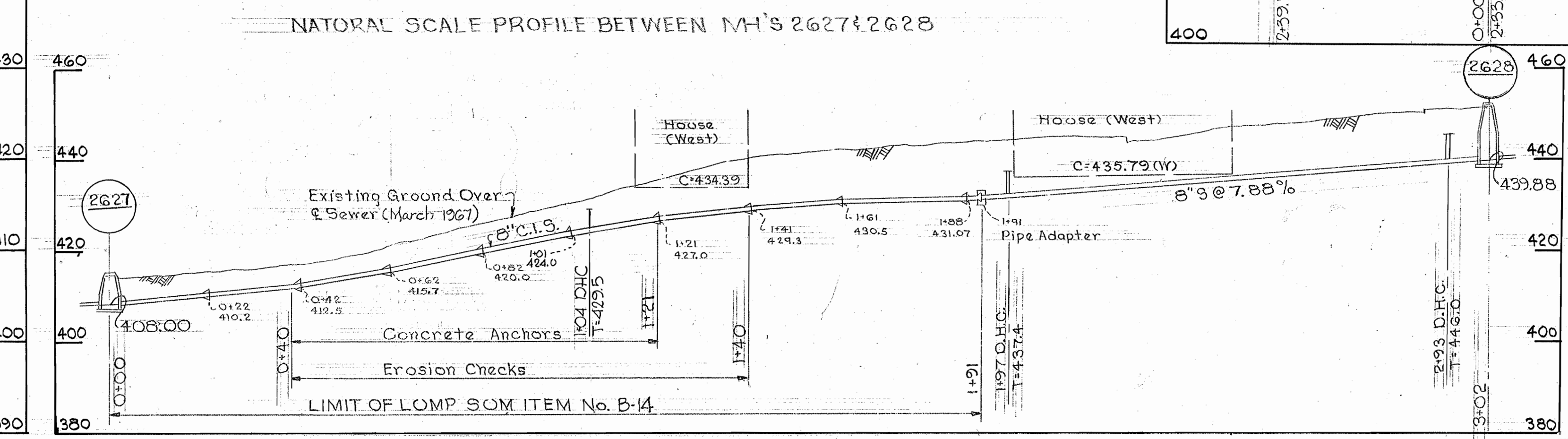
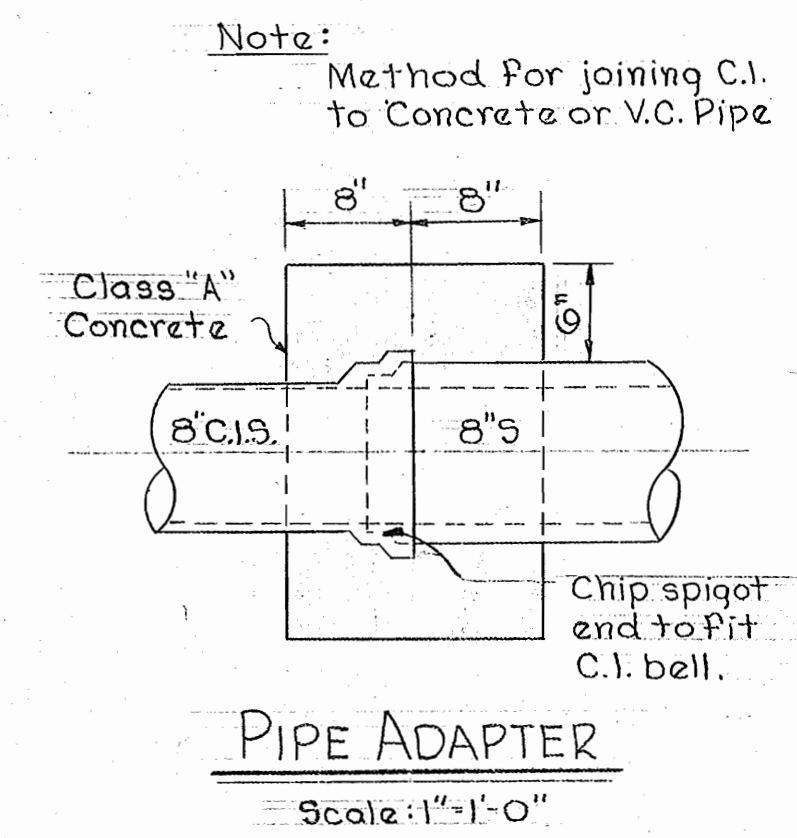
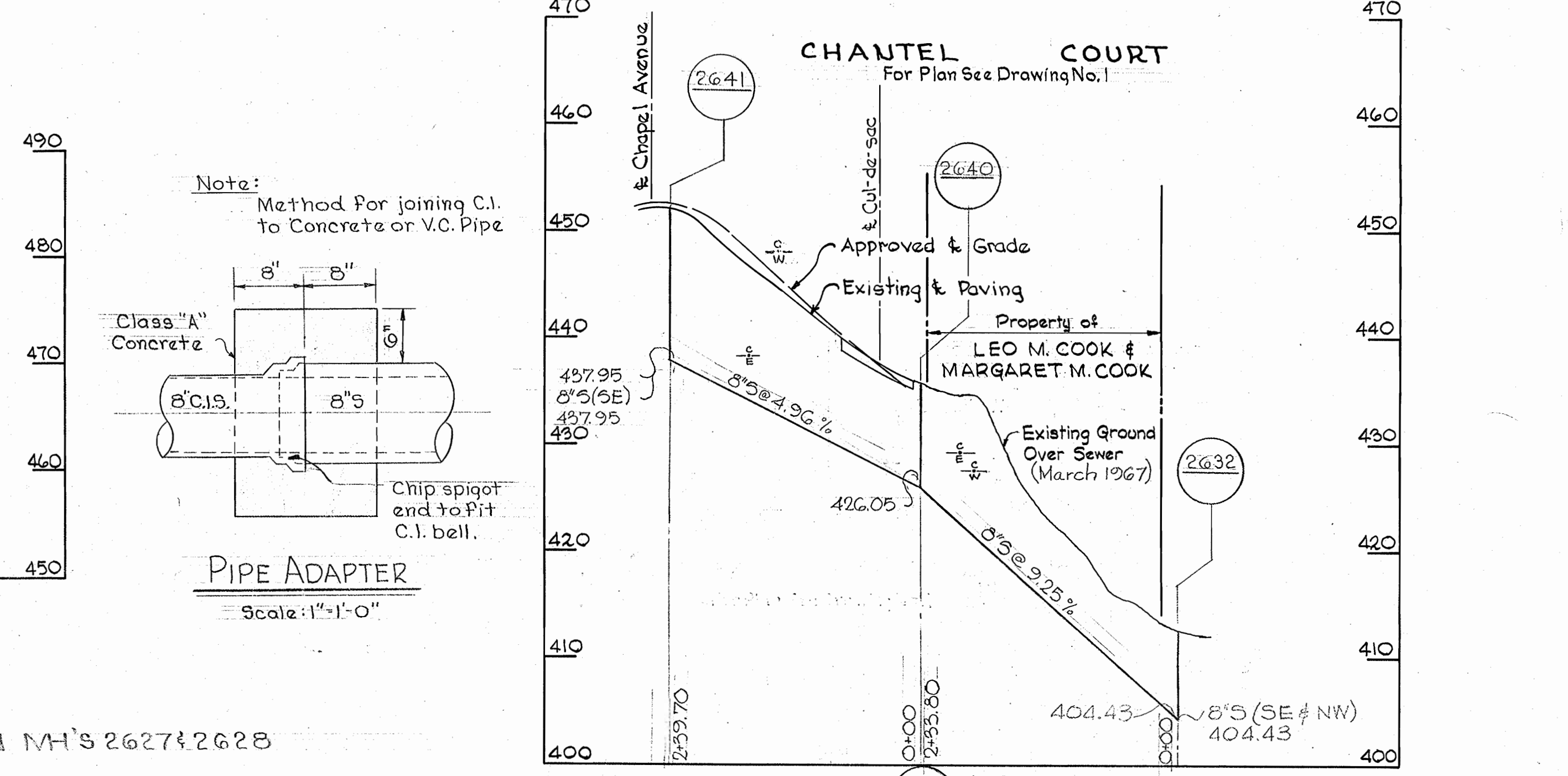
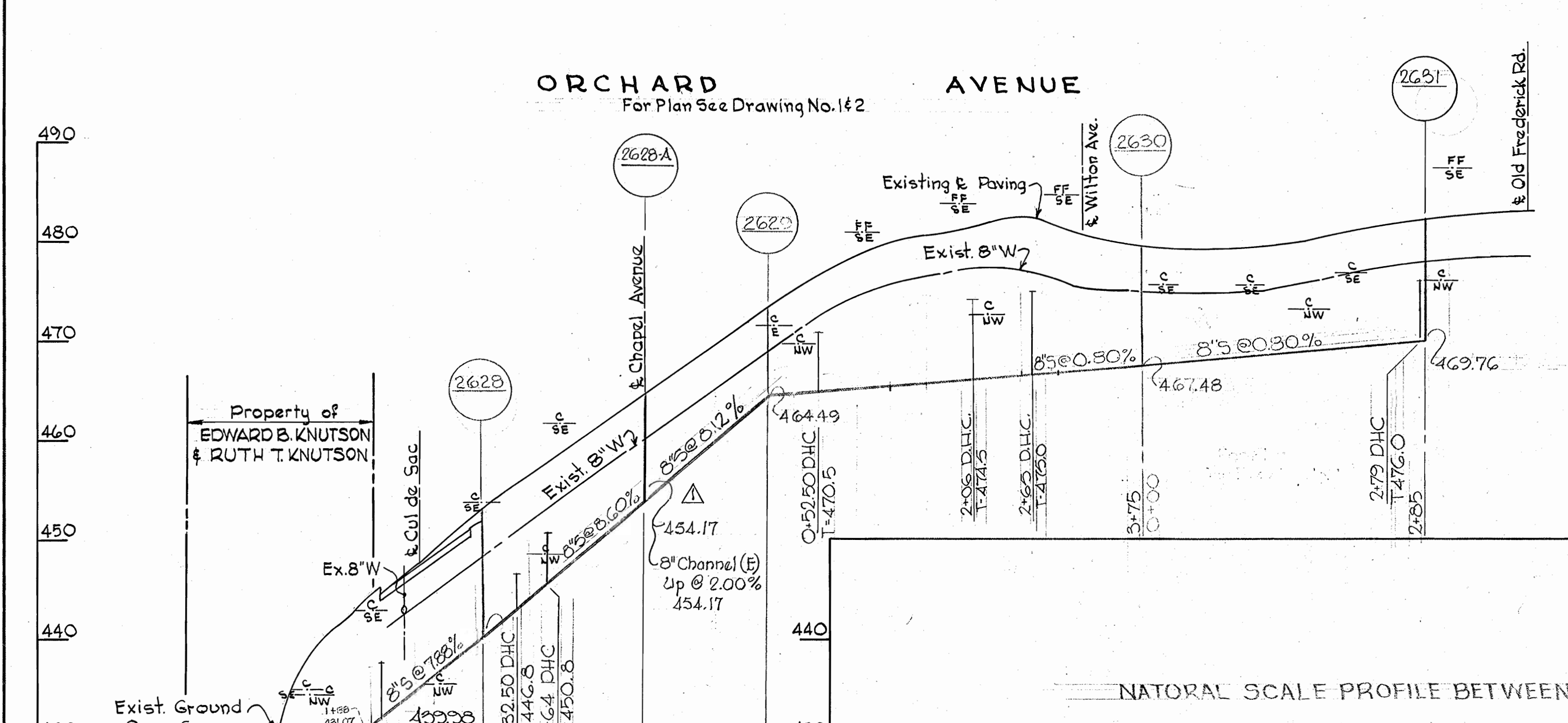
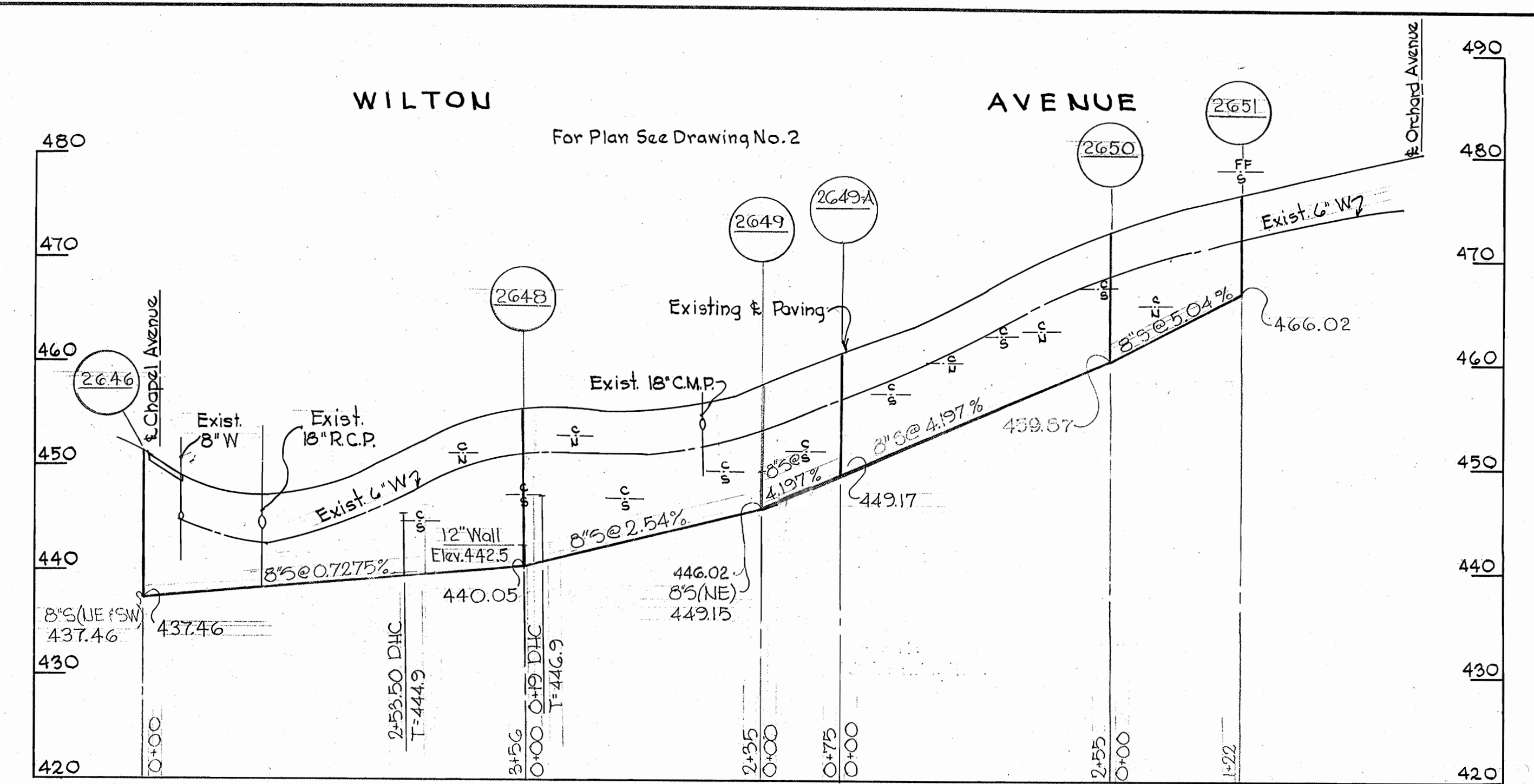
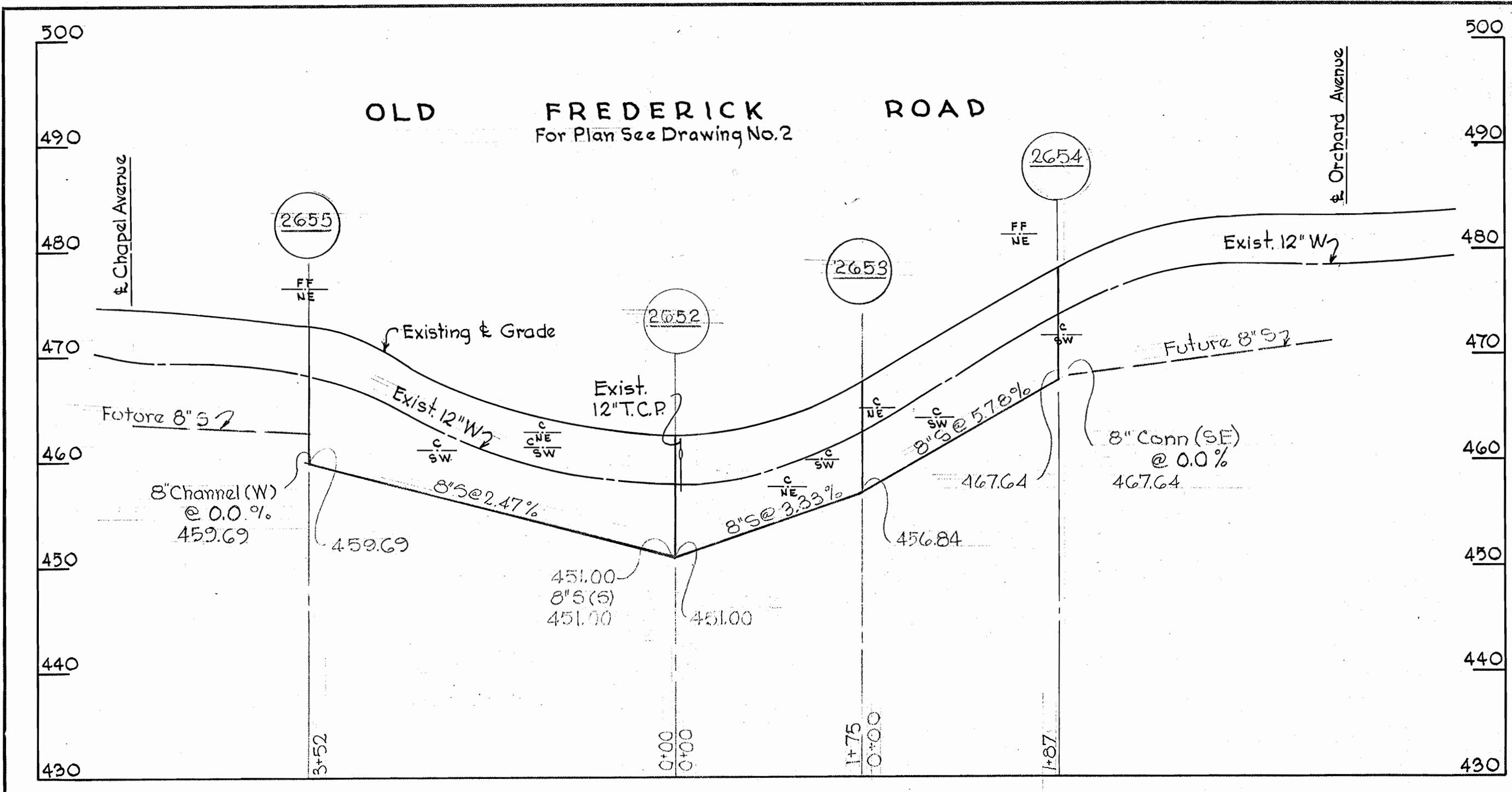
WHITMAN, REQUARDT & ASSOCIATES ENGINEERS 1304 ST. PAUL ST. BALTIMORE, MARYLAND	HOWARD COUNTY METROPOLITAN COMMISSION DATE: 5-15-68 <i>W. O. Pillay</i> CHIEF ENGINEER	CONTRACT NO. 184-S	PLAN OF SEWER MAINS	ELLICOTT CITY-WILTON FARM ACRES ELECTION DISTRICT-ELLICOTT CITY NO.2	DRAWING NO. 2 OF 4 SCALE 1"=50' INW 34 11/11/40
---	---	--------------------	------------------------	---	--

W. O. 5839-2

January 7, 1969  
 AS BUILT

F.B. 3048, 3012, 3013, 3016, 3017

WS 184-S/2



SEWER MAINS ARE ACP CLASS 2400

**PROFILE**  
Scale: Vert. 1"=10'  
Hor. 1"=100'

No.	Date	Revision
8-26-68		Added Manhole # 2628-A

**PROFILE**  
Scale: Hor. & Vert. - 1"=20'

WHITMAN, REQUARDT & ASSOCIATES  
ENGINEERS  
1304 ST. PAUL ST.  
BALTIMORE, MARYLAND

HOWARD COUNTY METROPOLITAN COMMISSION  
DATE: 5-15-68  
CHIEF ENGINEER

CONTRACT NO. 184-S

PROFILES OF  
SEWER MAINS

ELLCOTT CITY-WILTON FARM ACRES  
ELECTION DISTRICT-ELLCOTT CITY NO.2

DRAWING NO. 3 OF 4  
SCALE AS SHOWN

W. O. 5839-2

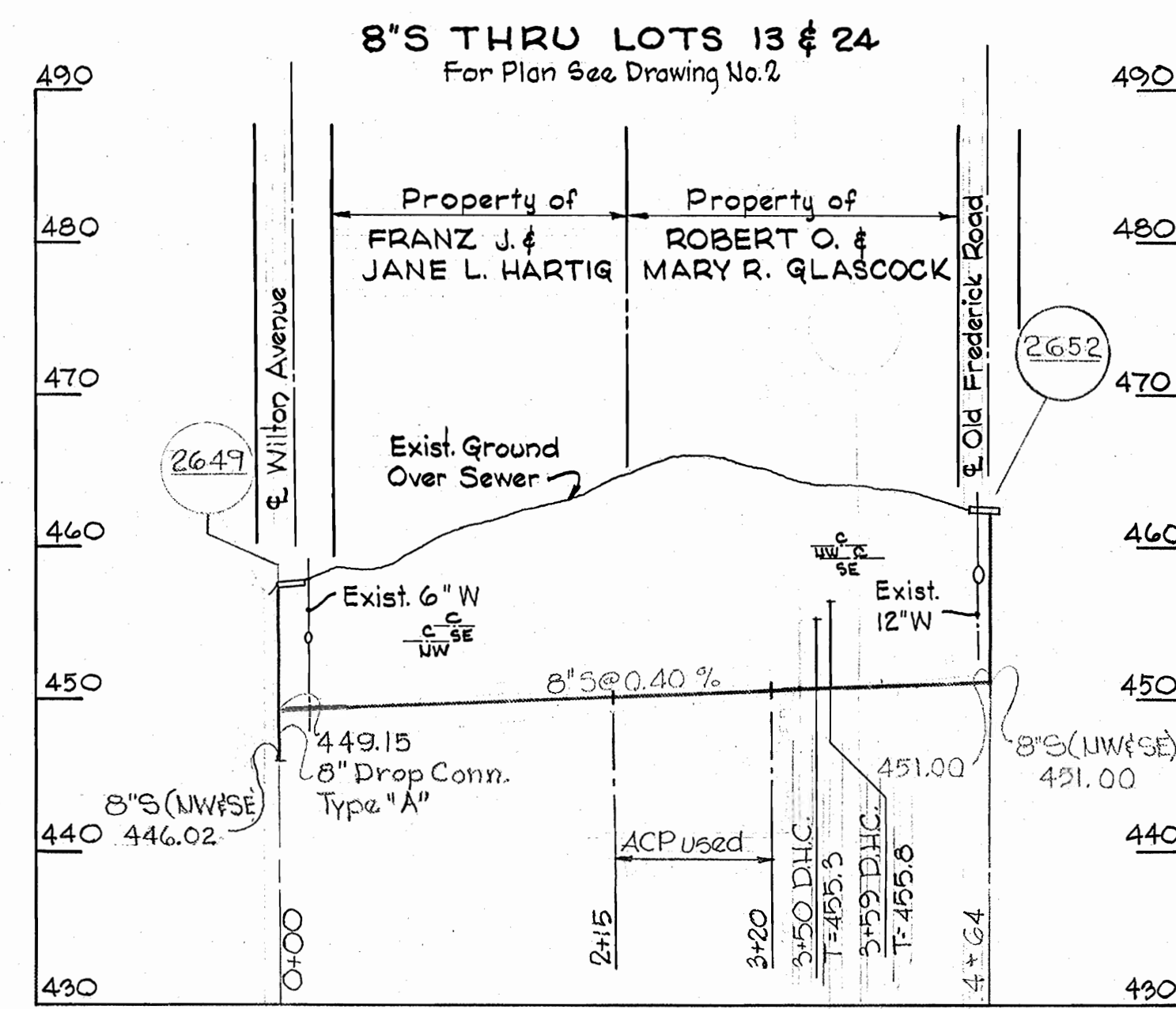
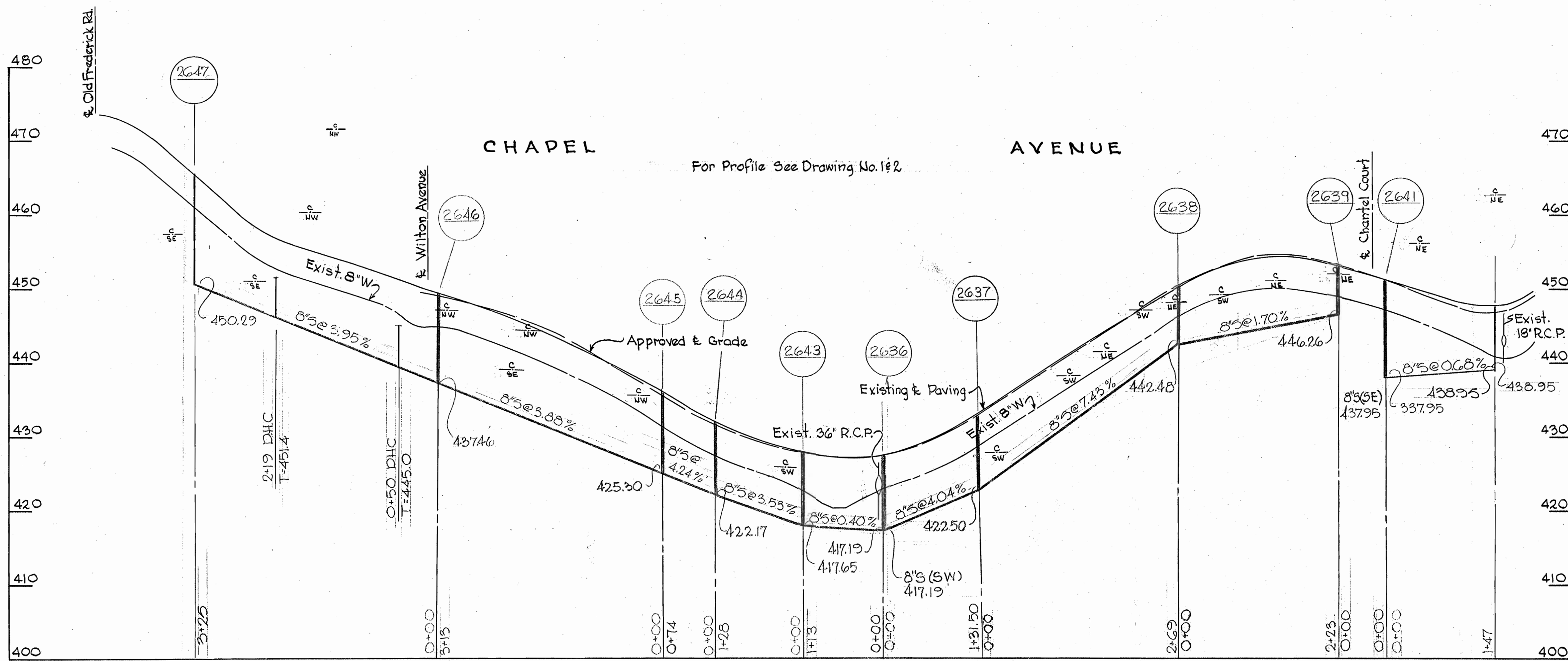
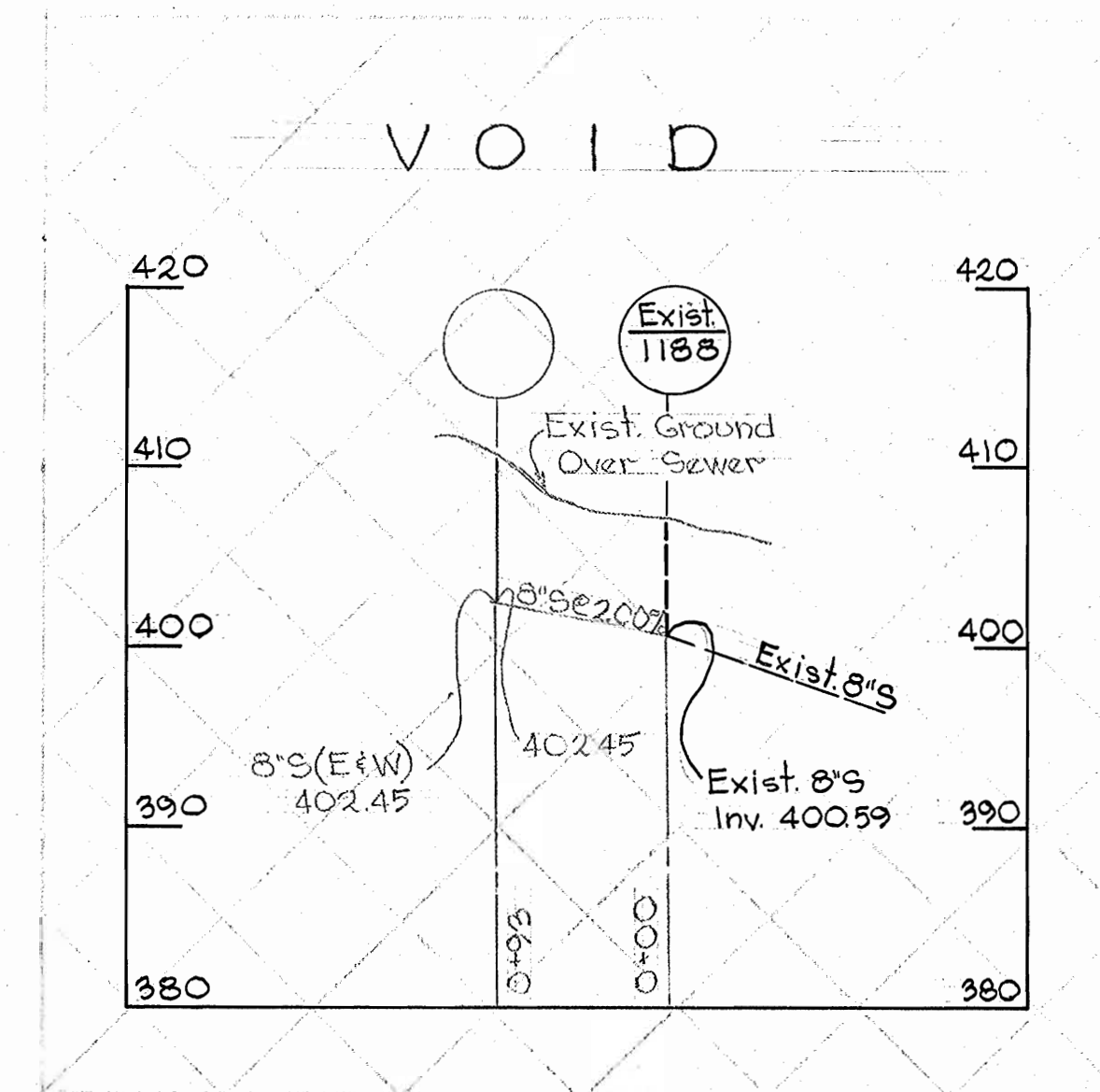
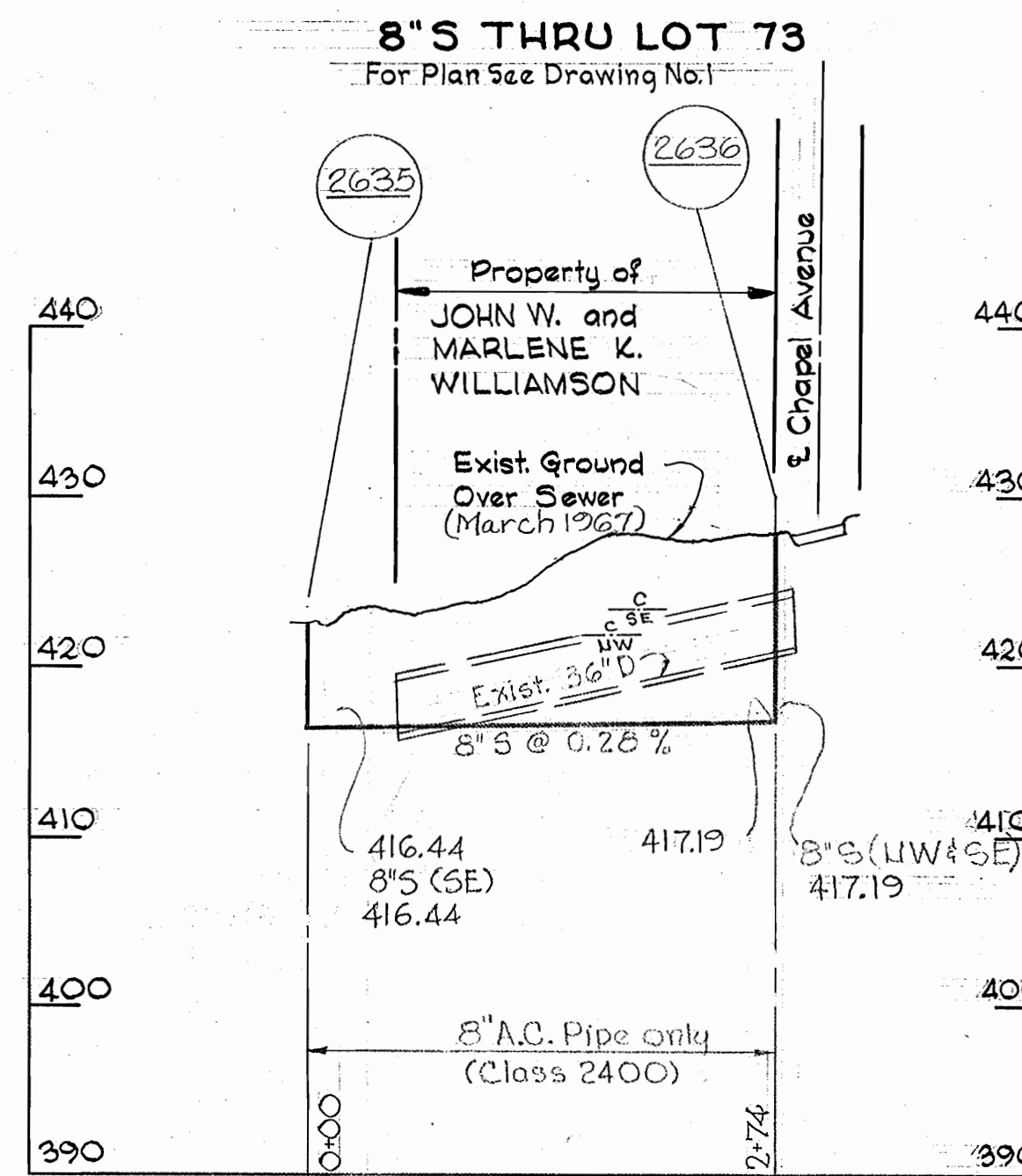
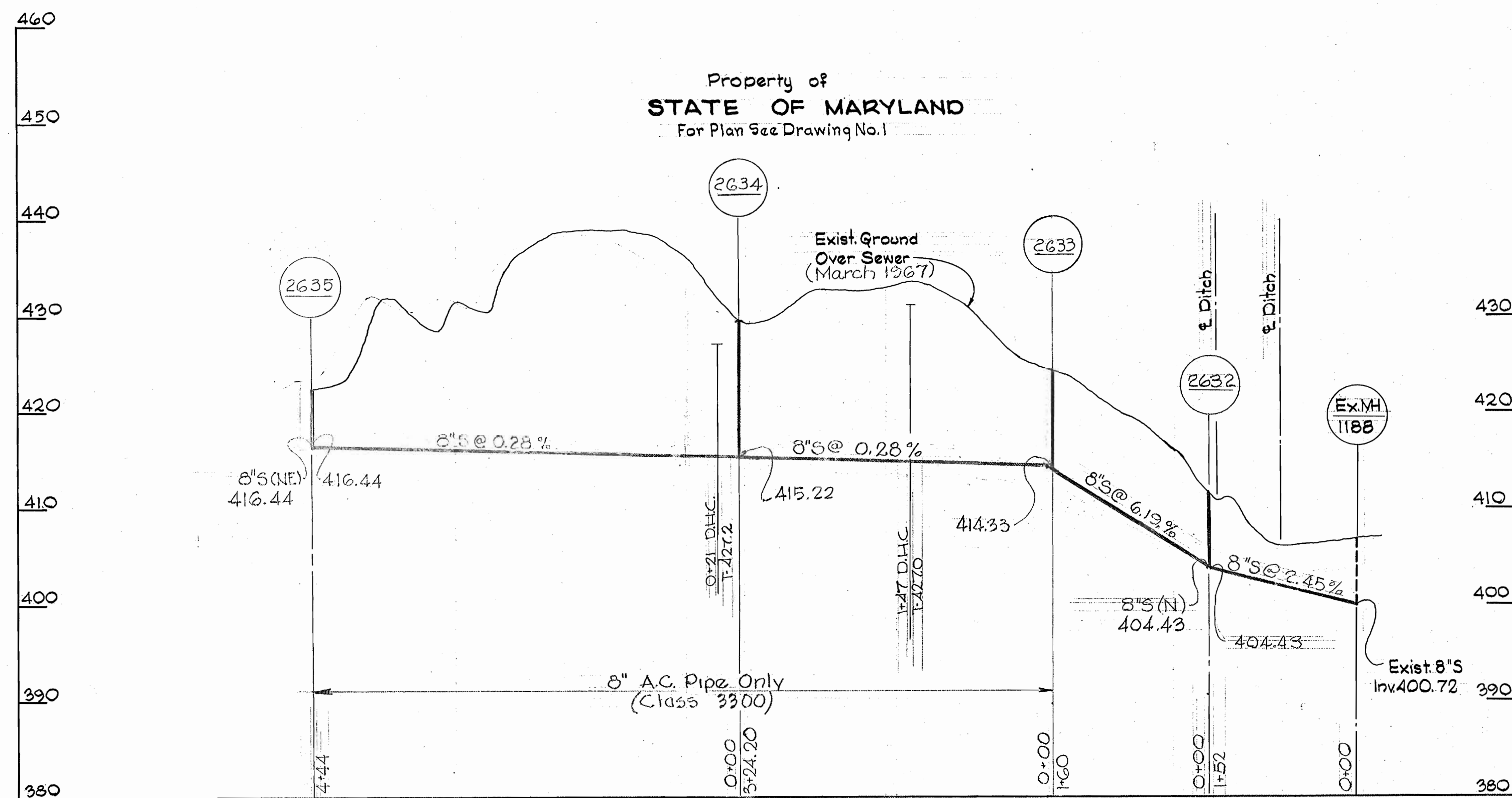
January 7, 1969

AS BUILT

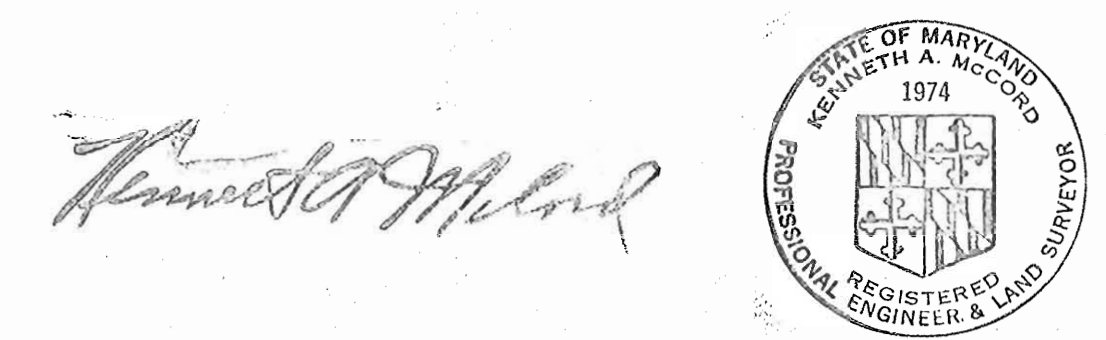


WS 184-S/3

Subcontract



ACP PIPE USED



WHITMAN, REQUARDT & ASSOCIATES ENGINEERS 1304 ST. PAUL ST. BALTIMORE, MARYLAND	HOWARD COUNTY METROPOLITAN COMMISSION DATE 5-15-68 W. O. F. GERT CHIEF ENGINEER	CONTRACT NO. 184-S	PROFILES OF SEWER MAINS	ELLICOTT CITY-WILTON FARM ACRES ELECTION DISTRICT-ELLICOTT CITY NO.2	DRAWING NO. 4 OF 4 SCALE H:1"=100' V:1"=10' AS BUILT
---	--	--------------------	----------------------------	---	---

W. O. 5839-2

January 7, 1968

Contract No. 184-S

WS 184-S/4