

STAKE OUT IN FB * 4307
DIARY IN FB * 4308

CONTRACT 179-S

LITTLE PATUXENT RIVER INTERCEPTOR

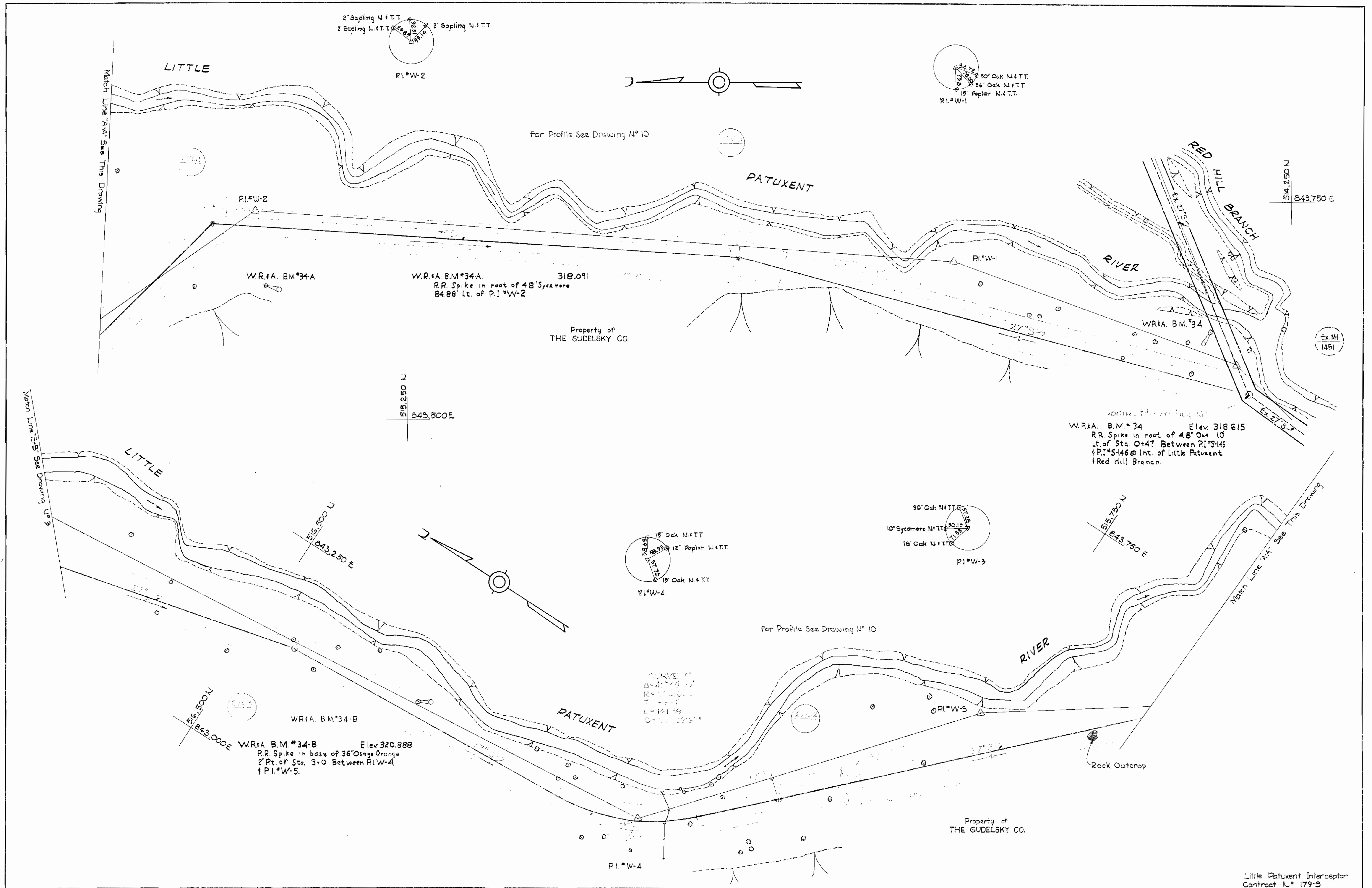
HOWARD COUNTY METROPOLITAN COMMISSION

ELLICOTT CITY, MARYLAND

For General Notes
See Sheet 119-D

Little Patuxent Interceptor
Contract No. 179-S

WHITMAN, REQUARDT & ASSOCIATES ENGINEERS 1304 ST. PAUL ST. BALTIMORE, MARYLAND	HOWARD COUNTY METROPOLITAN COMMISSION DATE: 11/16/07 2008.11.16 <small>CHAIRMAN</small>	CONTRACT NO. 179-S	LOCATION MAP	LITTLE PATUXENT RIVER INTERCEPTOR SECTION NO. 8	DRAWING NO. 1 OF 12	SCALE AS SHOWN
---	--	--------------------	--------------	--	---------------------	----------------



WHITMAN, REQUARDT & ASSOCIATES
ENGINEERS
1304 ST. PAUL ST.
BALTIMORE, MARYLAND

HOWARD COUNTY METROPOLITAN COMMISSION
DATE 11-10-67 *W O Fellert*
CHIEF ENGINEER

CONTRACT NO. 179-S

PLAN OF
SEWER MAINS

LITTLE PATUXENT RIVER INTERCEPTOR
SECTION NO. 8

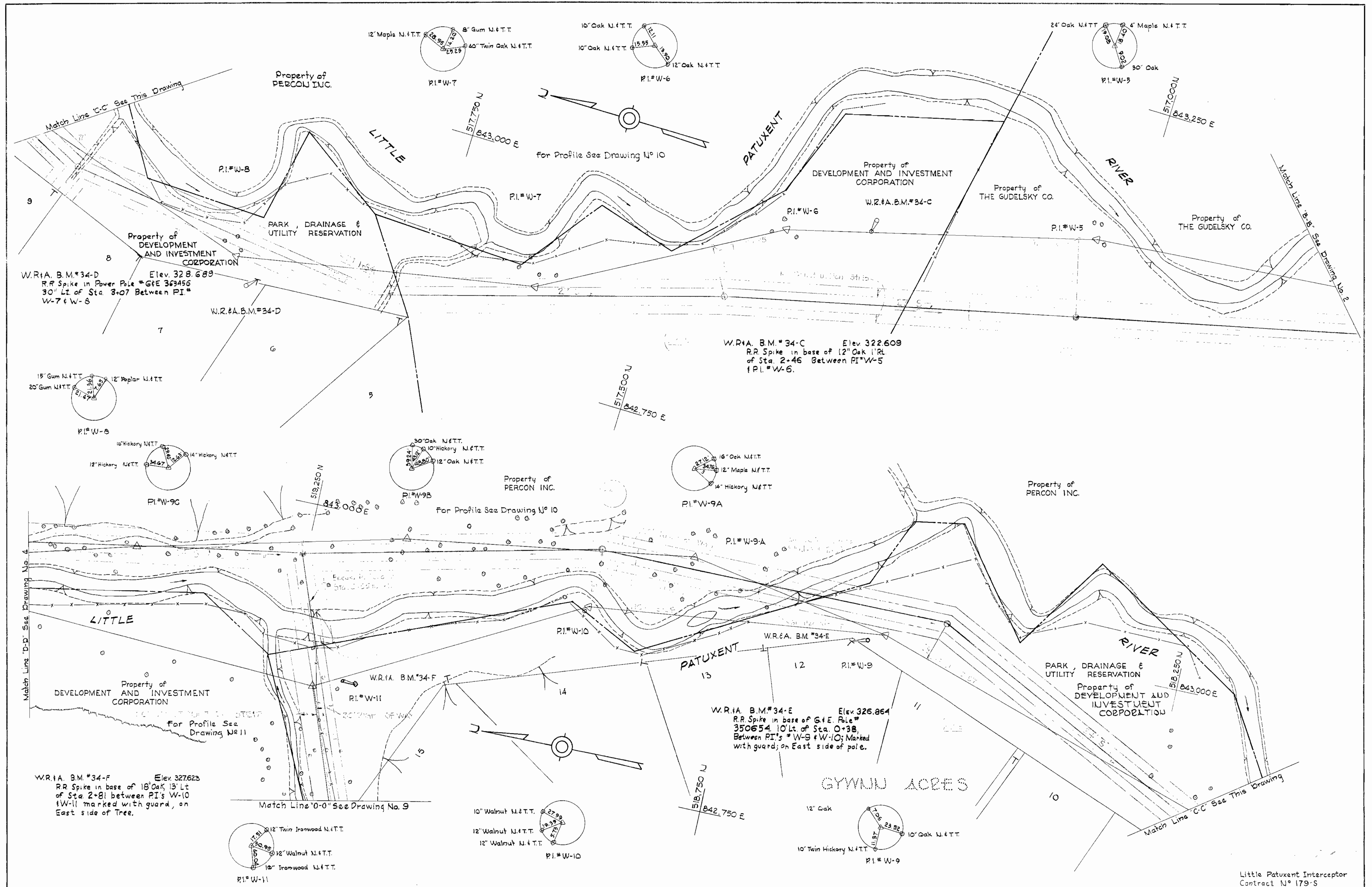
DRAWING NO. 2 OF 12 SCALE 1"=50'

Little Patuxent Interceptor
Contract N° 179-S

FB 3835
3864

W. O. 5839-2

WS 179-S/2



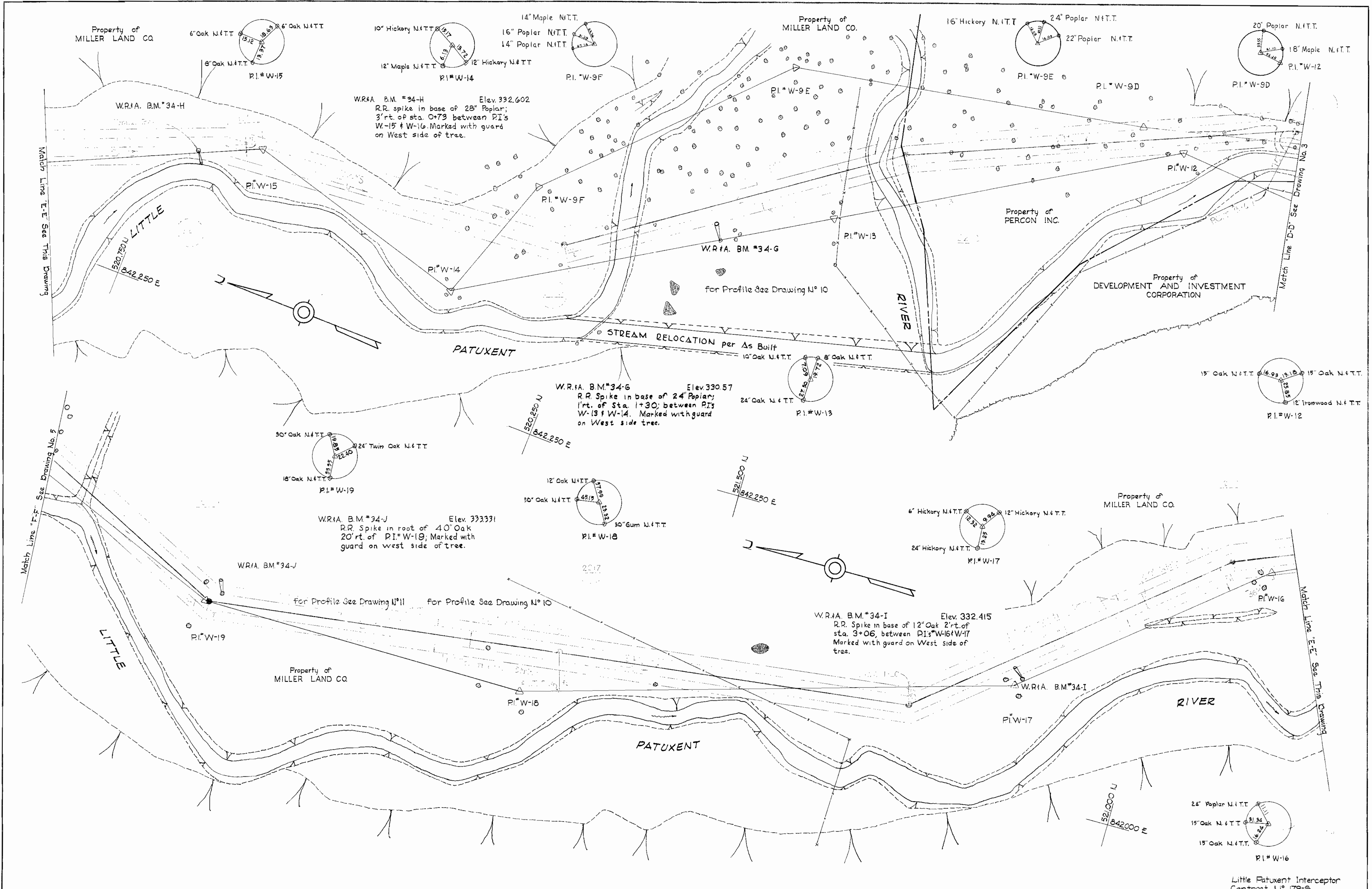
Little Patuxent Interceptor
Contract No. 179-S

WHITMAN, REQUARDT & ASSOCIATES ENGINEERS 1304 ST. PAUL ST. BALTIMORE, MARYLAND	HOWARD COUNTY METROPOLITAN COMMISSION DATE: 11-10-67 CHIEF ENGINEER: [Signature]	CONTRACT NO. 179-S	PLAN OF SEWER MAINS	LITTLE PATUXENT RIVER INTERCEPTOR SECTION NO. 8	DRAWING NO. 3 OF 12	SCALE 1"=50' 516.482 513.482
---	--	--------------------	------------------------	--	---------------------------	---------------------------------------

W. O. 5839-2

FB 3835
3864

WS 179-S/3



WHITMAN, REQUARDT & ASSOCIATES ENGINEERS 1304 ST. PAUL ST. BALTIMORE, MARYLAND	HOWARD COUNTY METROPOLITAN COMMISSION 11-10-67 DATE	CONTRACT NO. 179-S 200 Gilbert CHIEF ENGINEER	PLAN OF SEWER MAINS	LITTLE PATUXENT RIVER INTERCEPTOR SECTION NO. 8	DRAWING NO. 4 OF 12 SCALE 1"=50' 19-482 20-480 21-480
---	---	---	------------------------	--	---

W. O. 5839-2

F.B. 3835, 3864
3864

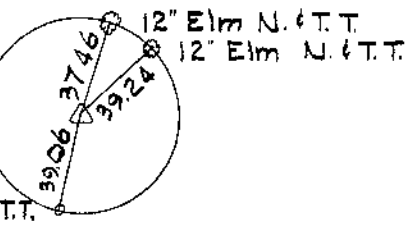
WS 179-S/4

NOTE:

The Contractor shall notify the Telephone Co. prior to any construction activities in the vicinity of the telephone cables by calling collect at 685-0400 in Baltimore, Maryland.

Wooden Fence Post N.T.T.

PI # W-23



523,250 U
1/4" 1500 E

W.R.#A. B.M.#34-L

PI # W-23

Property of MILLER LAND CO.

Property of FONT HILL LAND CO.

W.R.#A. B.M.#34-M

PI # W-24

PI # W-22

40' Oak N.T.T.

8' Locust N.T.T.

8' Hickory N.T.T.

12' Hickory N.T.T.

15' Poplar N.T.T.

24' Poplar N.T.T.

PI # W-25

PI # W-24

W.R.#A. B.M.#34-N

Elev. 345.794

RR spike in root of 60' Twin Oak 1' Rt. of sta. 0+49, bet. P.I.'s W-24 & W-29. Marked with guard on west side of tree.

W.R.#A. B.M.#34-L

Elev. 342.811

RR spike in root of 48' oak 80' rt. of P.I. # W-23 on other side of stream. Marked with guard on N.W. side of tree.

10' Walnut N.T.T.

15' Walnut N.T.T.

PI # W-22

For Profile See Drawing N° 12

W.R.#A. B.M.#34-N

Elev. 348.170

Square cut on Northeast corner of bridge at corner of headwall and wingwall.

W.R.#A. B.M.#34-O

Elev. 356.19

RR spike in base of 32' Poplar 100' lt. of sta. 0+50 between P.I.'s W-28 & W-29. Marked with guard on east side of tree.

PI # W-28

PI # W-27

W.R.#A. B.M.#34-N

PI # W-26

Property of FONT HILL LAND CO.

Property of FONT HILL LAND CO.

48' Oak N.T.T.

15' Walnut N.T.T.

PI # W-26

36' Oak N.T.T.

36' Oak N.T.T.

40' Oak N.T.T.

PI # W-27

PI # W-28

6' Maple N.T.T.

12' Maple N.T.T.

12' Twin Maple N.T.T.

PI # W-28

W.R.#A. B.M.#34-O

LAKE

Match Line K-K' See Drawing No. 7

Match Line J-J' See This Drawing

Match Line U-U' See Drawing No. 5

Match Line V-V' See Drawing No. 6

Match Line W-W' See Drawing No. 8

Match Line X-X' See Drawing No. 9

Match Line Y-Y' See Drawing No. 10

Match Line Z-Z' See Drawing No. 11

Match Line AA' See Drawing No. 12

Match Line BB' See Drawing No. 13

Match Line CC' See Drawing No. 14

Match Line DD' See Drawing No. 15

Match Line EE' See Drawing No. 16

Match Line FF' See Drawing No. 17

Match Line GG' See Drawing No. 18

Match Line HH' See Drawing No. 19

Match Line II' See Drawing No. 20

Match Line JJ' See Drawing No. 21

Match Line KK' See Drawing No. 22

Match Line LL' See Drawing No. 23

Match Line MM' See Drawing No. 24

Match Line NN' See Drawing No. 25

Match Line OO' See Drawing No. 26

Match Line PP' See Drawing No. 27

Match Line QQ' See Drawing No. 28

Match Line RR' See Drawing No. 29

Match Line SS' See Drawing No. 30

Match Line TT' See Drawing No. 31

Match Line UU' See Drawing No. 32

Match Line VV' See Drawing No. 33

Match Line WW' See Drawing No. 34

Match Line XX' See Drawing No. 35

Match Line YY' See Drawing No. 36

Match Line ZZ' See Drawing No. 37

Match Line AA' See Drawing No. 38

Match Line BB' See Drawing No. 39

Match Line CC' See Drawing No. 40

Match Line DD' See Drawing No. 41

Match Line EE' See Drawing No. 42

Match Line FF' See Drawing No. 43

Match Line GG' See Drawing No. 44

Match Line HH' See Drawing No. 45

Match Line II' See Drawing No. 46

Match Line JJ' See Drawing No. 47

Match Line KK' See Drawing No. 48

Match Line LL' See Drawing No. 49

Match Line MM' See Drawing No. 50

Match Line NN' See Drawing No. 51

Match Line OO' See Drawing No. 52

Match Line PP' See Drawing No. 53

Match Line QQ' See Drawing No. 54

Match Line RR' See Drawing No. 55

Match Line SS' See Drawing No. 56

Match Line TT' See Drawing No. 57

Match Line UU' See Drawing No. 58

Match Line VV' See Drawing No. 59

Match Line WW' See Drawing No. 60

Match Line XX' See Drawing No. 61

Match Line YY' See Drawing No. 62

Match Line ZZ' See Drawing No. 63

Match Line AA' See Drawing No. 64

Match Line BB' See Drawing No. 65

Match Line CC' See Drawing No. 66

Match Line DD' See Drawing No. 67

Match Line EE' See Drawing No. 68

Match Line FF' See Drawing No. 69

Match Line GG' See Drawing No. 70

Match Line HH' See Drawing No. 71

Match Line II' See Drawing No. 72

Match Line JJ' See Drawing No. 73

Match Line KK' See Drawing No. 74

Match Line LL' See Drawing No. 75

Match Line MM' See Drawing No. 76

Match Line NN' See Drawing No. 77

Match Line OO' See Drawing No. 78

Match Line PP' See Drawing No. 79

Match Line QQ' See Drawing No. 80

Match Line RR' See Drawing No. 81

Match Line SS' See Drawing No. 82

Match Line TT' See Drawing No. 83

Match Line UU' See Drawing No. 84

Match Line VV' See Drawing No. 85

Match Line WW' See Drawing No. 86

Match Line XX' See Drawing No. 87

Match Line YY' See Drawing No. 88

Match Line ZZ' See Drawing No. 89

Match Line AA' See Drawing No. 90

Match Line BB' See Drawing No. 91

Match Line CC' See Drawing No. 92

Match Line DD' See Drawing No. 93

Match Line EE' See Drawing No. 94

Match Line FF' See Drawing No. 95

Match Line GG' See Drawing No. 96

Match Line HH' See Drawing No. 97

Match Line II' See Drawing No. 98

Match Line JJ' See Drawing No. 99

Match Line KK' See Drawing No. 100

Match Line LL' See Drawing No. 101

Match Line MM' See Drawing No. 102

Match Line NN' See Drawing No. 103

Match Line OO' See Drawing No. 104

Match Line PP' See Drawing No. 105

Match Line QQ' See Drawing No. 106

Match Line RR' See Drawing No. 107

Match Line SS' See Drawing No. 108

Match Line TT' See Drawing No. 109

Match Line UU' See Drawing No. 110

Match Line VV' See Drawing No. 111

Match Line WW' See Drawing No. 112

Match Line XX' See Drawing No. 113

Match Line YY' See Drawing No. 114

Match Line ZZ' See Drawing No. 115

Match Line AA' See Drawing No. 116

Match Line BB' See Drawing No. 117

Match Line CC' See Drawing No. 118

Match Line DD' See Drawing No. 119

Match Line EE' See Drawing No. 120

Match Line FF' See Drawing No. 121

Match Line GG' See Drawing No. 122

Match Line HH' See Drawing No. 123

Match Line II' See Drawing No. 124

Match Line JJ' See Drawing No. 125

Match Line KK' See Drawing No. 126

Match Line LL' See Drawing No. 127

Match Line MM' See Drawing No. 128

Match Line NN' See Drawing No. 129

Match Line OO' See Drawing No. 130

Match Line PP' See Drawing No. 131

Match Line QQ' See Drawing No. 132

Match Line RR' See Drawing No. 133

Match Line SS' See Drawing No. 134

Match Line TT' See Drawing No. 135

Match Line UU' See Drawing No. 136

Match Line VV' See Drawing No. 137

Match Line WW' See Drawing No. 138

Match Line XX' See Drawing No. 139

Match Line YY' See Drawing No. 140

Match Line ZZ' See Drawing No. 141

Match Line AA' See Drawing No. 142

Match Line BB' See Drawing No. 143

Match Line CC' See Drawing No. 144

Match Line DD' See Drawing No. 145

Match Line EE' See Drawing No. 146

Match Line FF' See Drawing No. 147

Match Line GG' See Drawing No. 148

Match Line HH' See Drawing No. 149

Match Line II' See Drawing No. 150

Match Line JJ' See Drawing No. 151

Match Line KK' See Drawing No. 152

Match Line LL' See Drawing No. 153

Match Line MM' See Drawing No. 154

Match Line NN' See Drawing No. 155

Match Line OO' See Drawing No. 156

Match Line PP' See Drawing No. 157

Match Line QQ' See Drawing No. 158

Match Line RR' See Drawing No. 159

Match Line SS' See Drawing No. 160

Match Line TT' See Drawing No. 161

Match Line UU' See Drawing No. 162

Match Line VV' See Drawing No. 163

Match Line WW' See Drawing No. 164

Match Line XX' See Drawing No. 165

Match Line YY' See Drawing No. 166

Match Line ZZ' See Drawing No. 167

Match Line AA' See Drawing No. 168

Match Line BB' See Drawing No. 169

Match Line CC' See Drawing No. 170

Match Line DD' See Drawing No. 171

Match Line EE' See Drawing No. 172

Match Line FF' See Drawing No. 173

Match Line GG' See Drawing No. 174

Match Line HH' See Drawing No. 175

Match Line II' See Drawing No. 176

Match Line JJ' See Drawing No. 177

Match Line KK' See Drawing No. 178

Match Line LL' See Drawing No. 179

Match Line MM' See Drawing No. 180

Match Line NN' See Drawing No. 181

Match Line OO' See Drawing No. 182

Match Line PP' See Drawing No. 183

Match Line QQ' See Drawing No. 184

Match Line RR' See Drawing No. 185

Match Line SS' See Drawing No. 186

Match Line TT' See Drawing No. 187

Match Line UU' See Drawing No. 188

Match Line VV' See Drawing No. 189

Match Line WW' See Drawing No. 190

Match Line XX' See Drawing No. 191

Match Line YY' See Drawing No. 192

Match Line ZZ' See Drawing No. 193

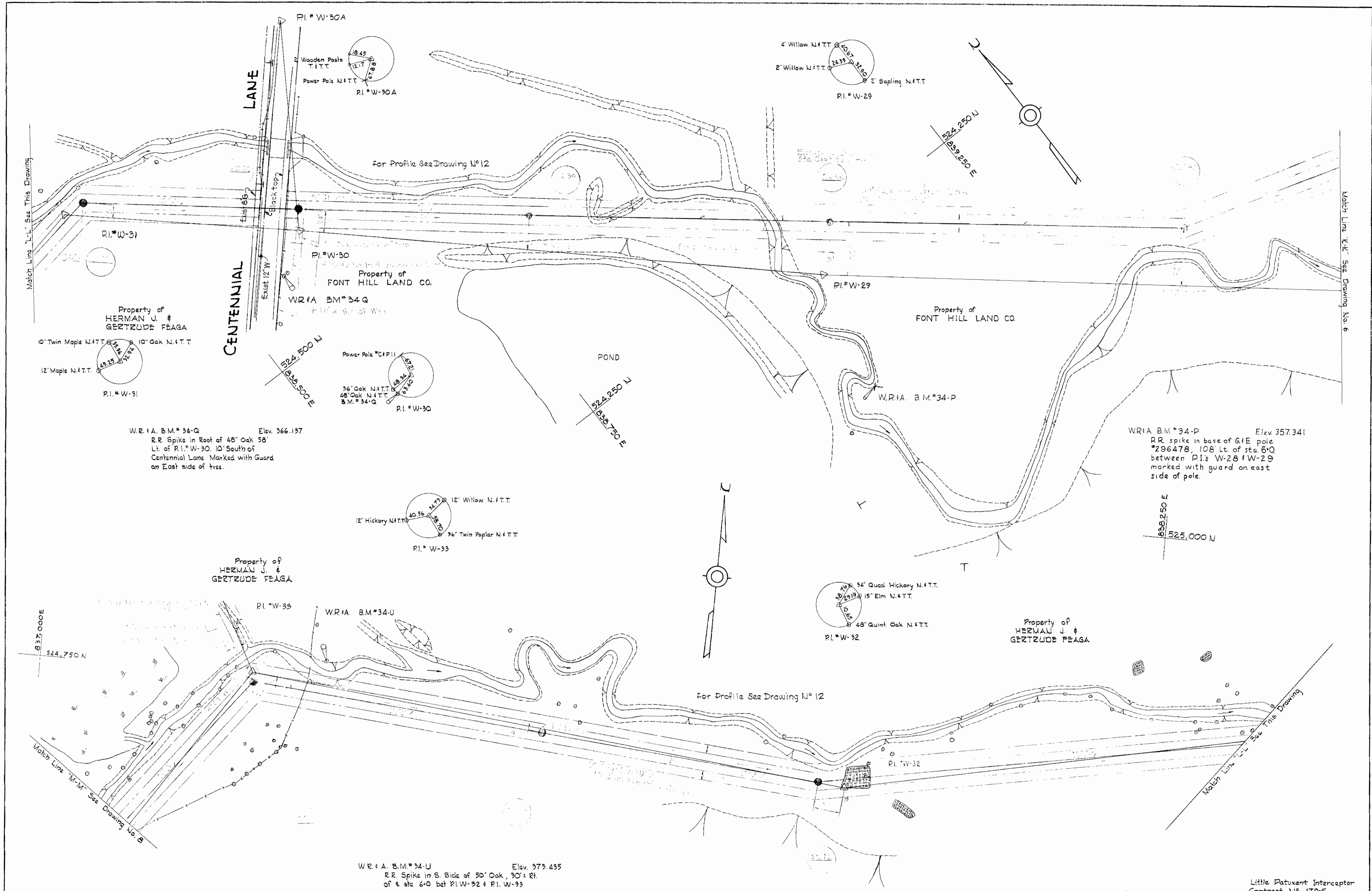
Match Line AA' See Drawing No. 194

Match Line BB' See Drawing No. 195

Match Line CC' See Drawing No. 196

Match Line DD' See Drawing No. 197

Match Line EE' See Drawing No. 198



Match Line K-K See Drawing No. 6

Match Line L-L See This Drawing

Match Line M-M See Drawing No. 5

Match Line L-L See This Drawing

WHITMAN, REQUARDT & ASSOCIATES
ENGINEERS
1304 ST. PAUL ST.
BALTIMORE, MARYLAND

HOWARD COUNTY METROPOLITAN COMMISSION
11-10-67 *W. O. S.*
DATE CHIEF ENGINEER

CONTRACT NO. 179-S

PLAN OF
SEWER MAINS

LITTLE PATUXENT RIVER INTERCEPTOR
SECTION NO. 8

DRAWING
NO. 7
OF 12

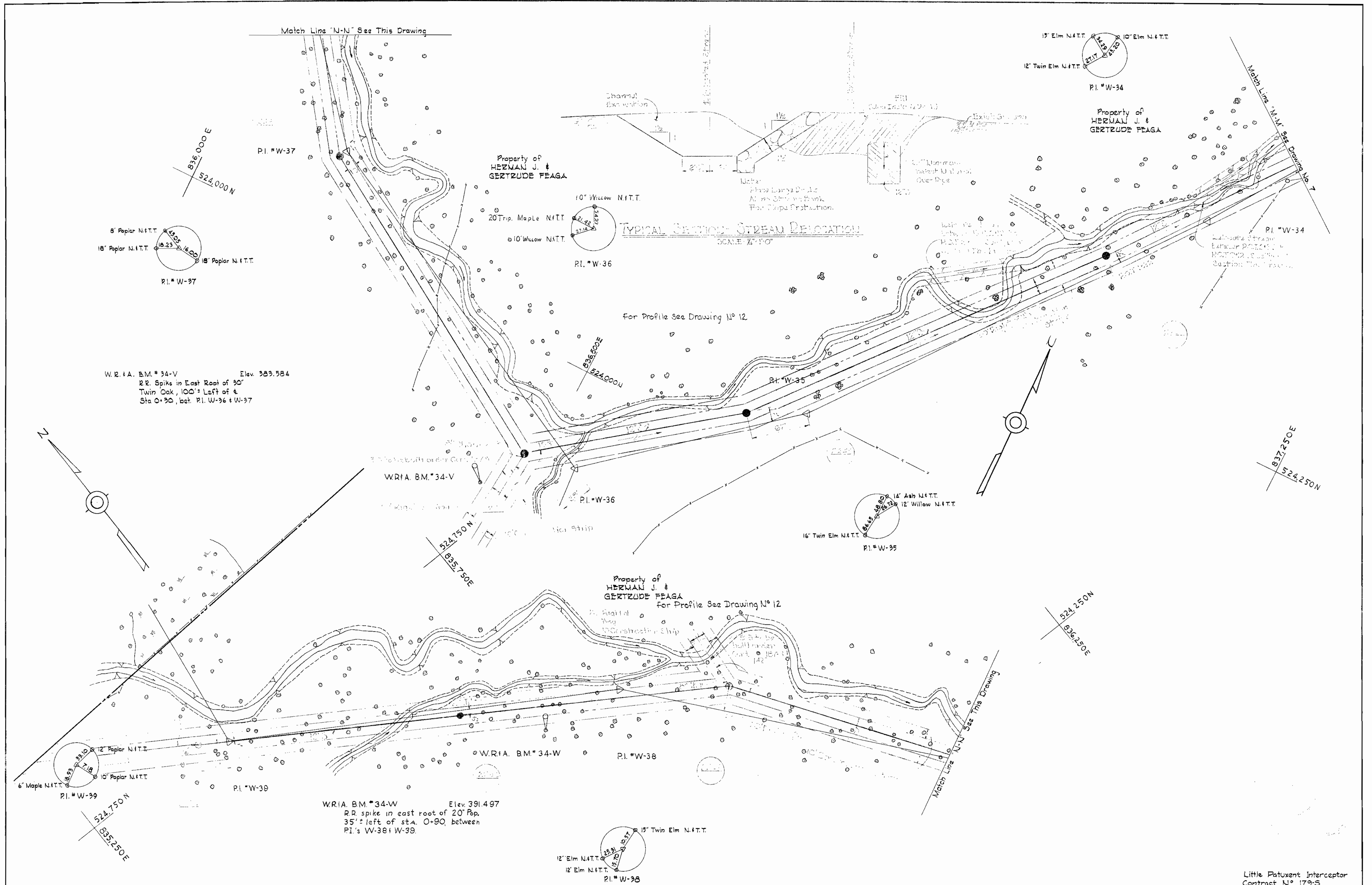
SCALE
1"=50'

Little Patuxent Interceptor
Contract No. 179-S

FB 3855,3862
3864

W. O. 5839-2

WS 179-S/7

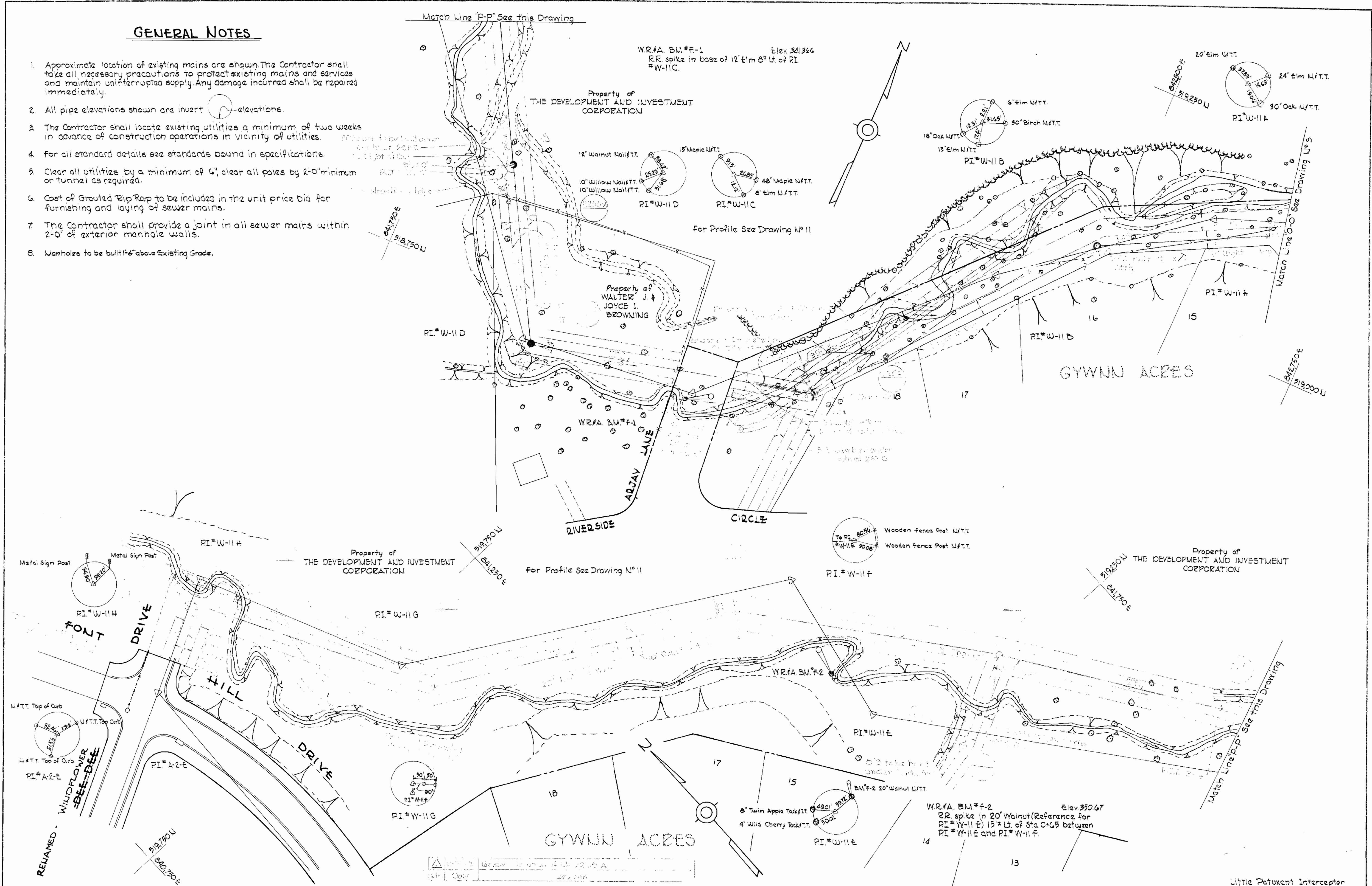


WHITMAN, REQUARDT & ASSOCIATES ENGINEERS 1304 ST. PAUL ST. BALTIMORE, MARYLAND	HOWARD COUNTY METROPOLITAN COMMISSION DATE: 11-10-67 CHIEF ENGINEER: [Signature]	CONTRACT NO. 179-S	PLAN OF SEWER MAINS	LITTLE PATUXENT RIVER INTERCEPTOR SECTION NO. 8	DRAWING NO. 8 OF 12 SCALE 1"=50' FB 3864 3862
---	--	--------------------	---------------------	---	---

WS 179-S/8

GENERAL NOTES

1. Approximate location of existing mains are shown. The Contractor shall take all necessary precautions to protect existing mains and services and maintain uninterrupted supply. Any damage incurred shall be repaired immediately.
2. All pipe elevations shown are invert elevations.
3. The Contractor shall locate existing utilities a minimum of two weeks in advance of construction operations in vicinity of utilities.
4. For all standard details see standards bound in specifications.
5. Clear all utilities by a minimum of 4', clear all poles by 2'-0" minimum or tunnel as required.
6. Cost of Grouted Rip Rap to be included in the unit price bid for furnishing and laying of sewer mains.
7. The Contractor shall provide a joint in all sewer mains within 2'-0" of exterior manhole walls.
8. Manholes to be built 1'-6" above Existing Grade.



WHITMAN, REQUARDT & ASSOCIATES
ENGINEERS
1304 ST. PAUL ST.
BALTIMORE, MARYLAND

HOWARD COUNTY METROPOLITAN COMMISSION
DATE: 11-10-67
CHIEF ENGINEER

CONTRACT NO. 179-S

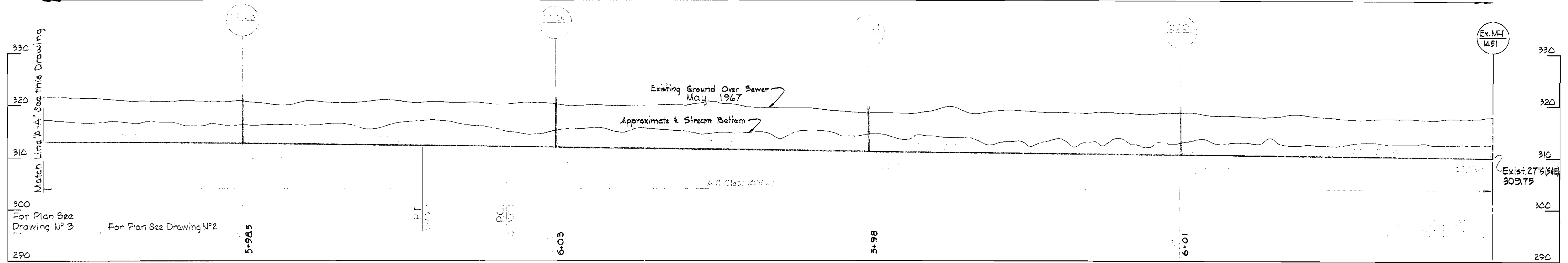
PLAN OF SEWER MAINS

LITTLE PATUXENT RIVER INTERCEPTOR SECTION NO. 8

Little Patuxent Interceptor Contract No. 179-S
DRAWING NO. 9 OF 12
SCALE 1" = 50'

WS 179-S/9

Property of
THE GUDELSKY CO.

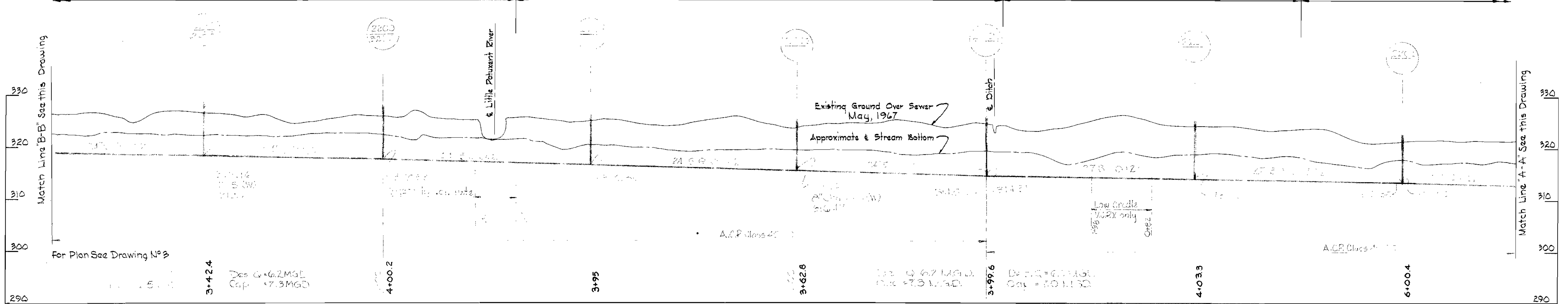


Property of
PERCON INC.

Property of
PARK DRAINAGE &
UTILITY RESERVATION

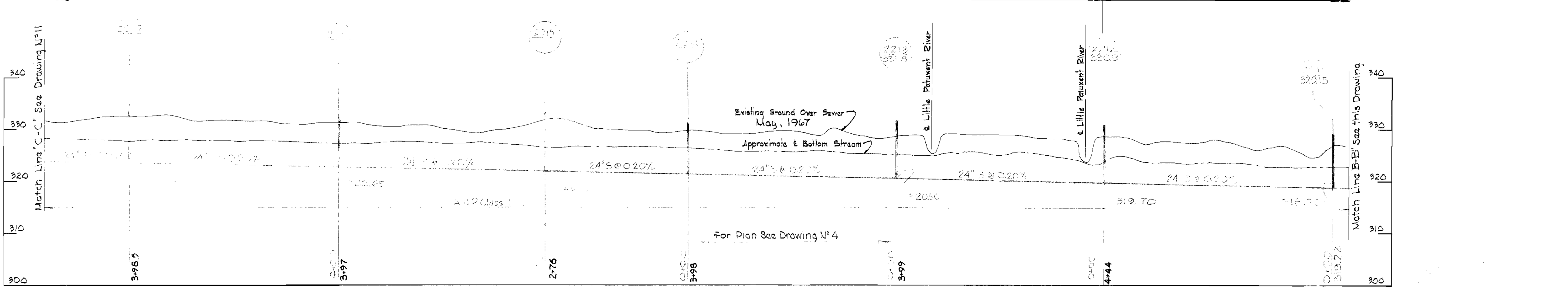
Property of
DEVELOPMENT AND INVESTMENT CORP.

Property of
THE GUDELSKY CO.



Property of
MILLER LAND CO.

Property of
PERCON INC.



WHITMAN, REQUARDT & ASSOCIATES
ENGINEERS
1304 ST. PAUL ST.
BALTIMORE, MARYLAND

HOWARD COUNTY METROPOLITAN COMMISSION
11-10-67 *W O Filled*
DATE CHIEF ENGINEER

CONTRACT NO. 179-S

PROFILES OF
SEWER MAINS

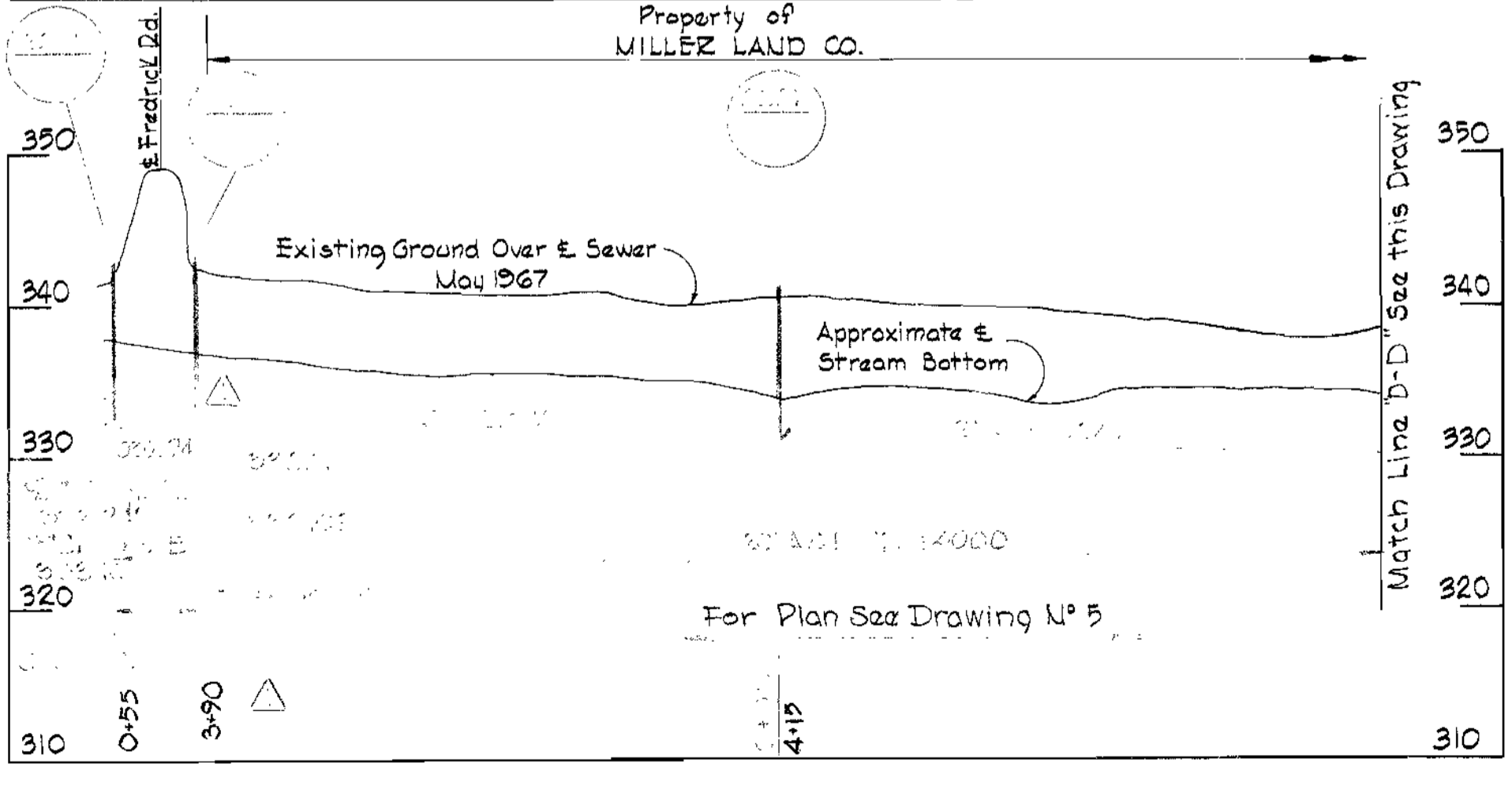
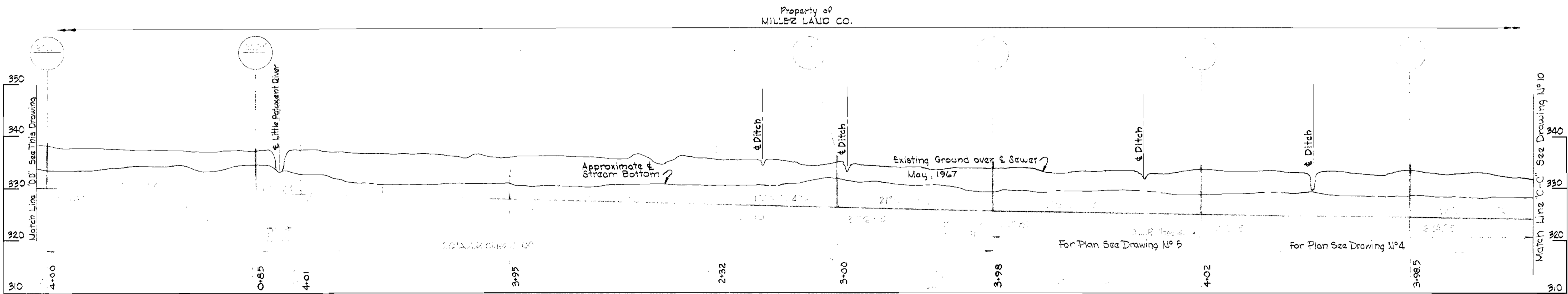
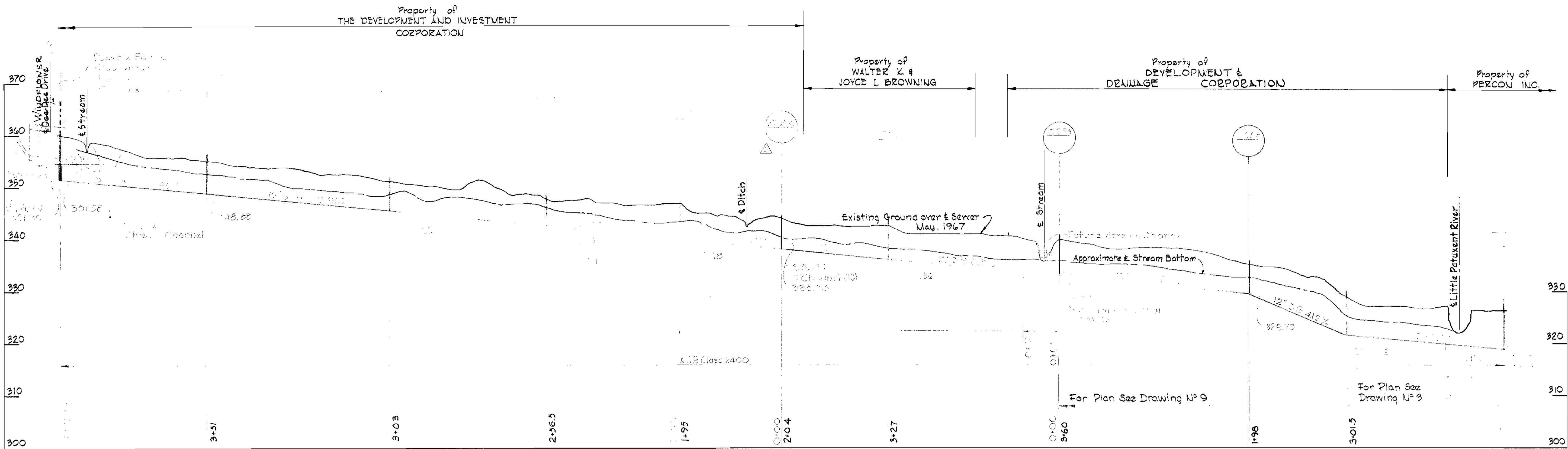
LITTLE PATUXENT RIVER INTERCEPTOR
SECTION NO. 8

DRAWING
NO. 10
OF 12

SCALE
H-1"=100'
V-1"=10'

Little Patuxent Interceptor
Contract N° 179-S

WS 179-S/10



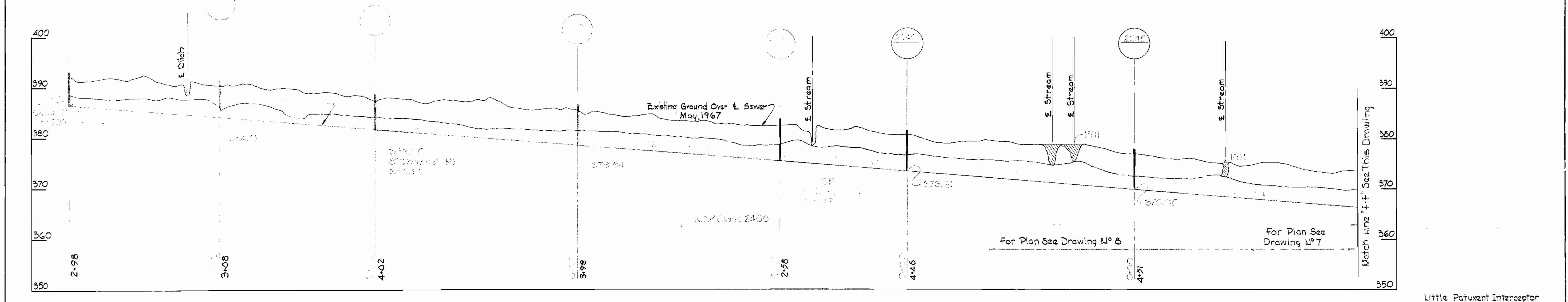
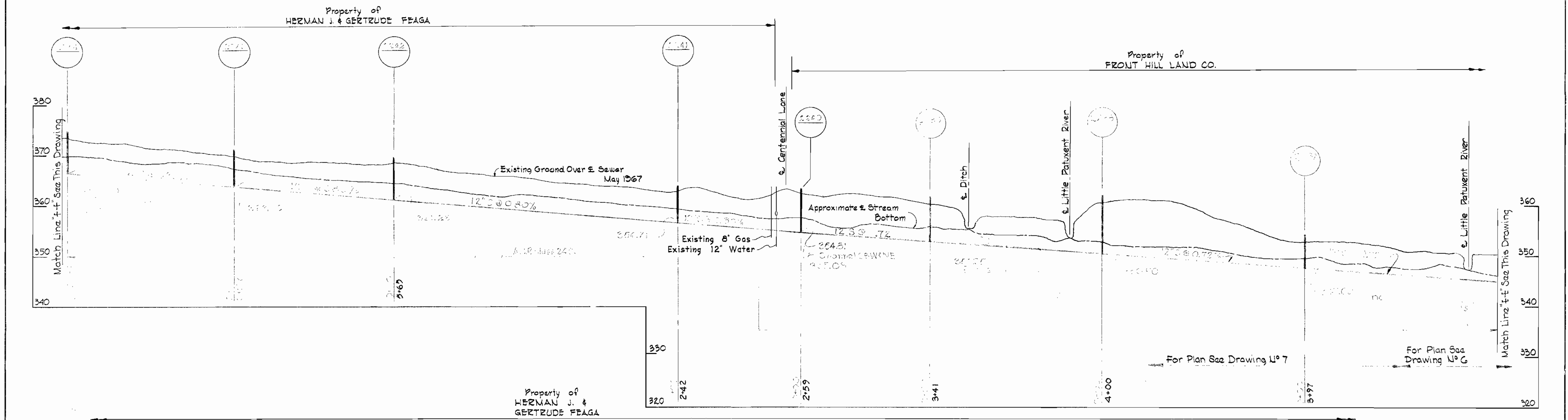
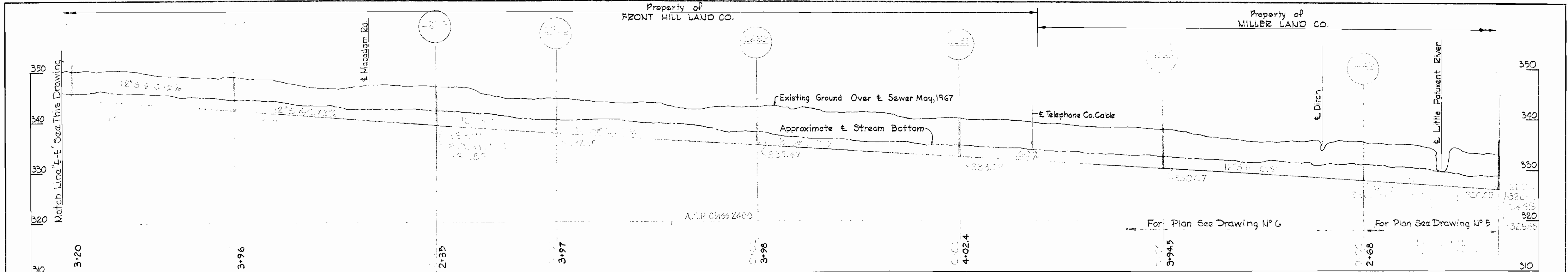
△	2255A	Exploratory pit at station 1+2255A
△	2226	Observed invert elevations of 1+2226 and 1+2225 and distances between 1+2227 and 1+2228
△	2225	Observed invert elevations of 1+2225 and 1+2226

Little Patuxent Interceptor
Contract No 179-5

WHITMAN, REQUARDT & ASSOCIATES ENGINEERS 1304 ST. PAUL ST. BALTIMORE, MARYLAND	HOWARD COUNTY METROPOLITAN COMMISSION 11-10-67 <i>W.C. Gilbert</i> DATE CHIEF ENGINEER	CONTRACT NO. 179-S	PROFILES OF SEWER MAINS	LITTLE PATUXENT RIVER INTERCEPTOR SECTION NO. 8	DRAWING NO. 11 OF 12	SCALE H-1"=100' V-1"=10'

W. O. 5859-2

WS 179-S/11



Little Patuxent Interceptor
Contract N° 179-S

WHITMAN, REQUARDT & ASSOCIATES ENGINEERS 1304 ST. PAUL ST. BALTIMORE, MARYLAND	HOWARD COUNTY METROPOLITAN COMMISSION 11-10-67 DATE	CONTRACT NO. 179-S 2007 CHIEF ENGINEER	PROFILES OF SEWER MAINS	LITTLE PATUXENT RIVER INTERCEPTOR SECTION NO. 8	DRAWING NO. 12 OF 12	SCALE H-1"=100' V-1"=10'
---	---	--	----------------------------	--	----------------------------	--------------------------------

W. O. 5839-2

WS 179-S/12