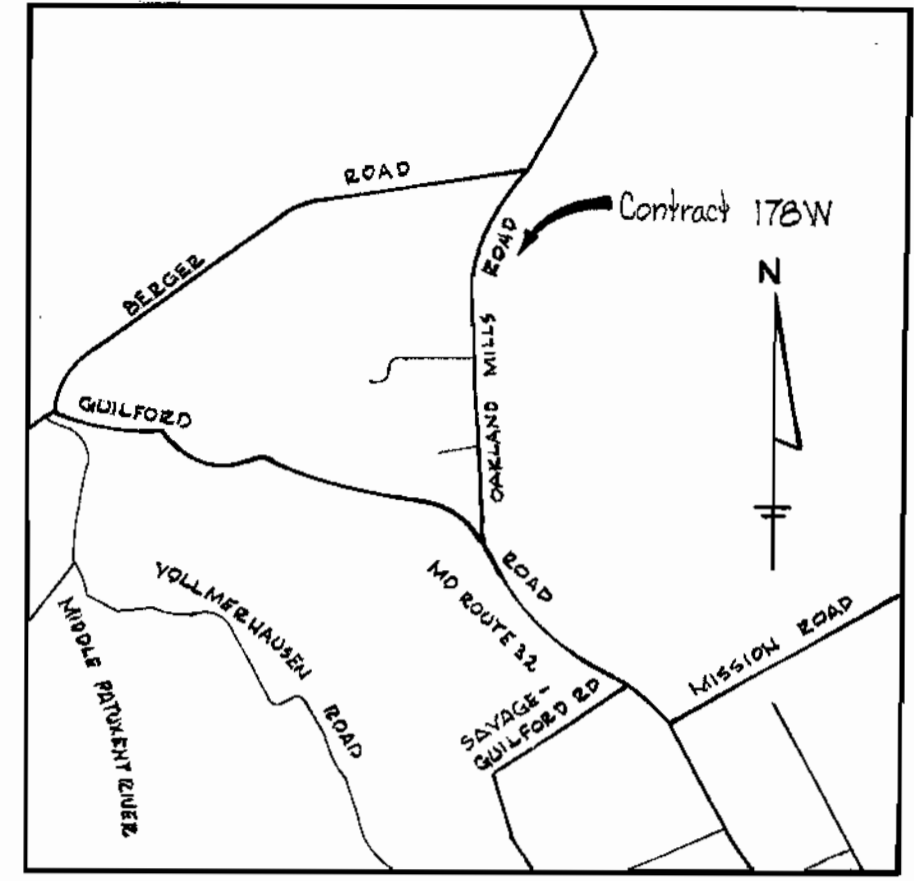


GENERAL NOTES

1. Approximate locations of existing mains are shown. The Contractor shall take all necessary precautions to protect existing mains and services and maintain uninterrupted supply. Any damage incurred shall be repaired immediately.
2. All pipe elevations shown are invert elevations.
3. The contractor shall locate existing utilities a minimum of two weeks in advance of construction operations in vicinity of utilities.
4. For standard details see standards bound in Specifications.
5. All water mains to be CIP or D.I.P. and have a minimum of 3/2 cover.
6. Block all fittings with concrete, see standard details bound in Specifications.
7. Bury line elevations on fire hydrants shall be set the same as edge of paving, top of curb, or as directed by the Engineer in the field.
8. All fire hydrants to be buttressed with concrete in accordance with Standard Detail W-4.
9. Cost of shipping fire hydrants and valves to be included in the unit price bid for furnishing and laying of water mains.
10. Clear all utilities by a minimum of 6', clear all poles by 2'-0" minimum on tunnel as required.
11. Profile stations shall be adjusted as required to conform to plan dimensions.

QUANTITIES

ITEM	QUANTITY
6" W	2,454'
8" W	2,445'
12" W	10,456'
F.H.	18



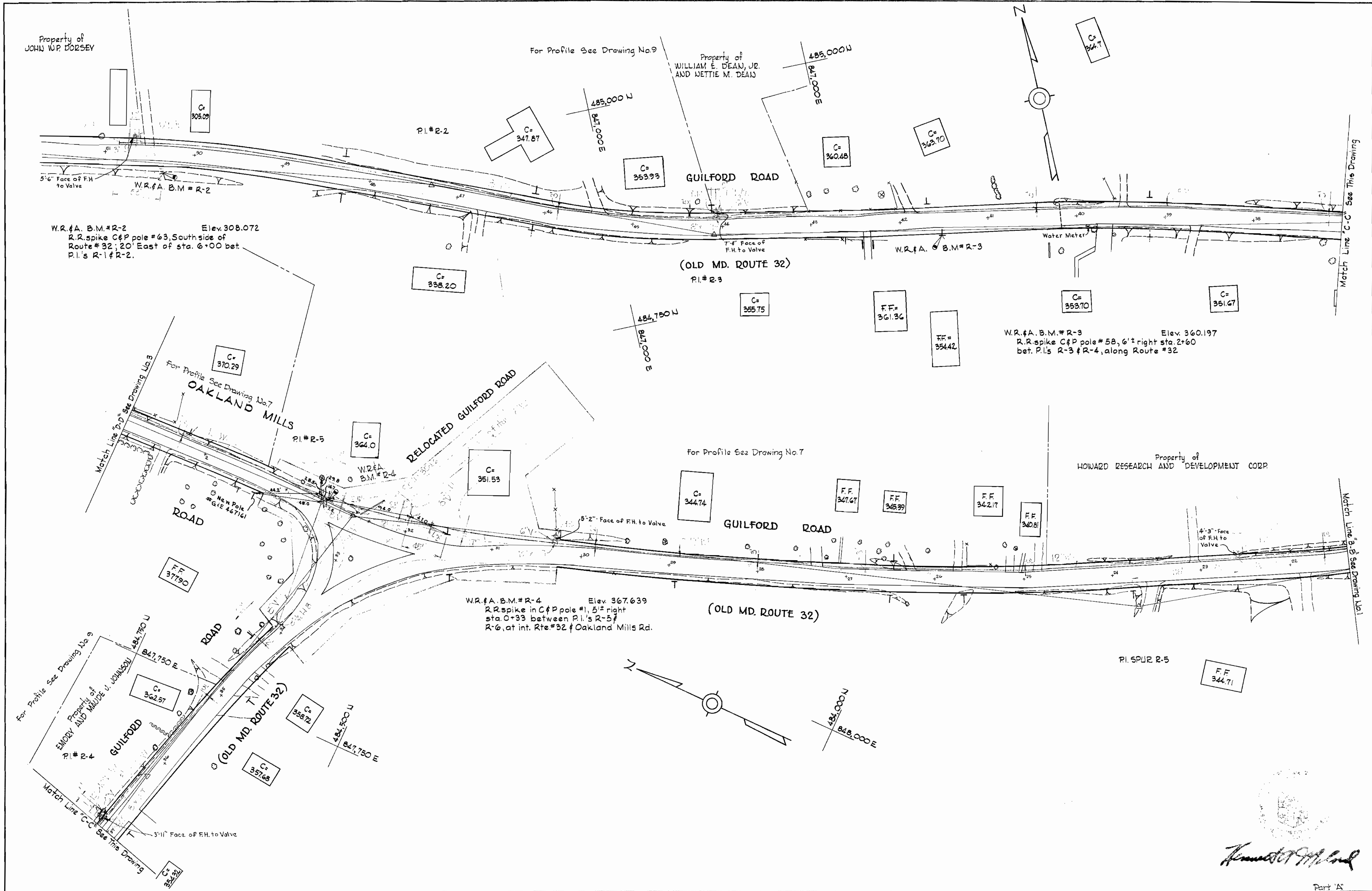
VICINITY MAP
Scale 1" = 1/2 Mile

BM*P.25 Elev. 296.719
Brass plate at intersection of Savage-Guilford Rd. & Route #32

WR&A. BM*4-S
Railroad spike base C&P pole #44 SW corner Savage Guilford Road & Route #32



<p>WHITMAN, REQUARDT & ASSOCIATES ENGINEERS 1304 ST. PAUL ST. BALTIMORE, MARYLAND</p>	<p>HOWARD COUNTY METROPOLITAN COMMISSION DATE 6-21-69 W. O. F. Chief Engineer</p>	<p>CONTRACT NO. 178-W</p>	<p>PLAN OF WATER MAINS</p>	<p>ELECTION DISTRICT GUILFORD No. 6</p>	<p>DRAWING NO. 1 OF 9 SCALE 1"=50'</p>
---	---	---------------------------	----------------------------	---	--

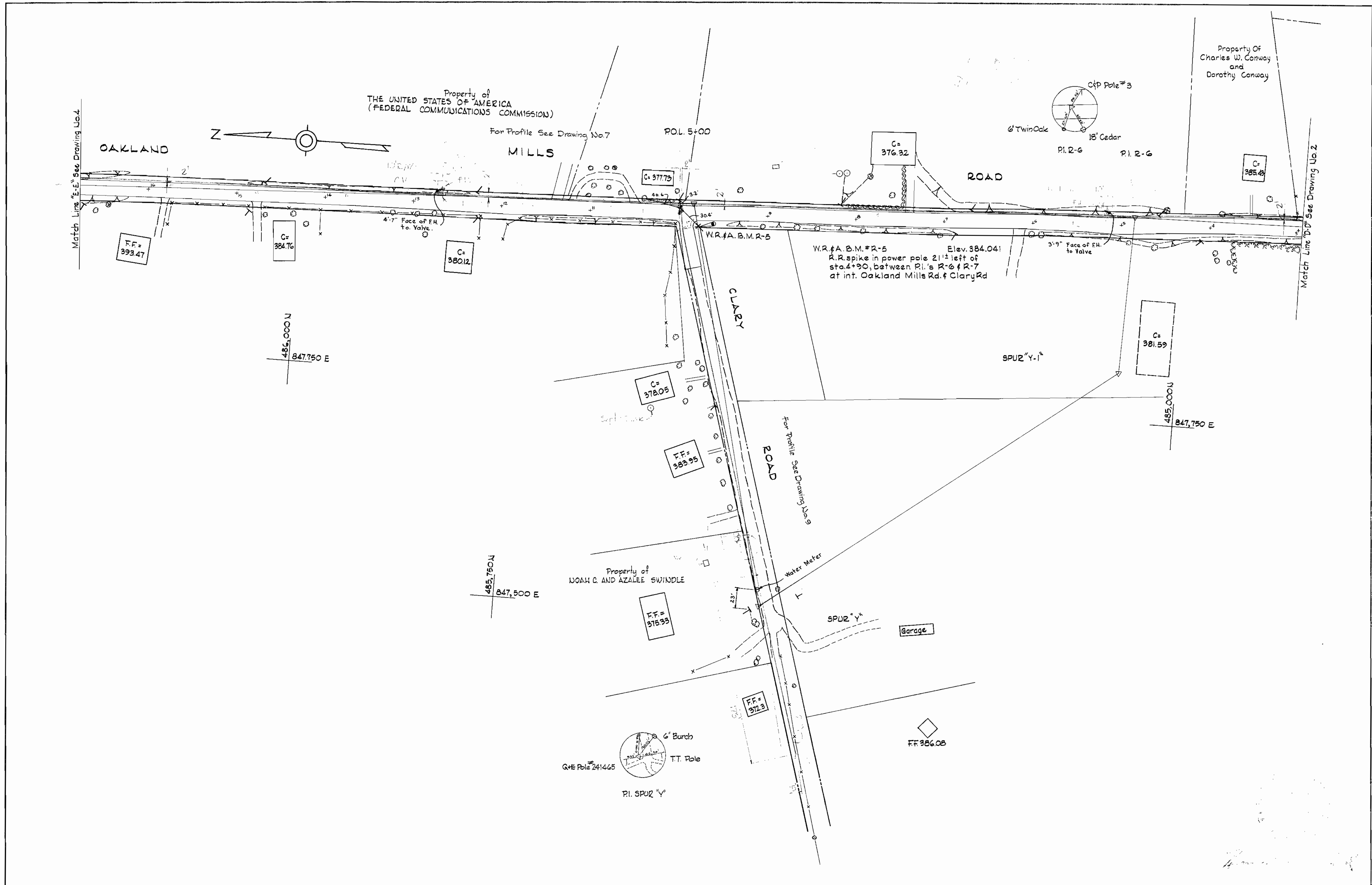


Handwritten signature

WHITMAN, REQUARDT & ASSOCIATES ENGINEERS 1304 ST. PAUL ST. BALTIMORE, MARYLAND	HOWARD COUNTY METROPOLITAN COMMISSION DATE: 6-21-68 W. O. Falout CHIEF ENGINEER	CONTRACT NO. 178-W	PLAN OF WATER MAINS	ELECTION DISTRICT GUILFORD NO. 6	DRAWING NO. 2 OF 9 SCALE 1"=50 F.B. 3792, 3823, 3888
---	--	--------------------	------------------------	-------------------------------------	--

WS 178-W/2

W. O. 5839-2



WHITMAN, REQUARDT & ASSOCIATES
 ENGINEERS
 1304 ST. PAUL ST.
 BALTIMORE, MARYLAND

HOWARD COUNTY METROPOLITAN COMMISSION
 DATE: 6-21-68
 W.C. Filbert
 CHIEF ENGINEER

CONTRACT NO. 178-W

PLAN OF
 WATER MAINS

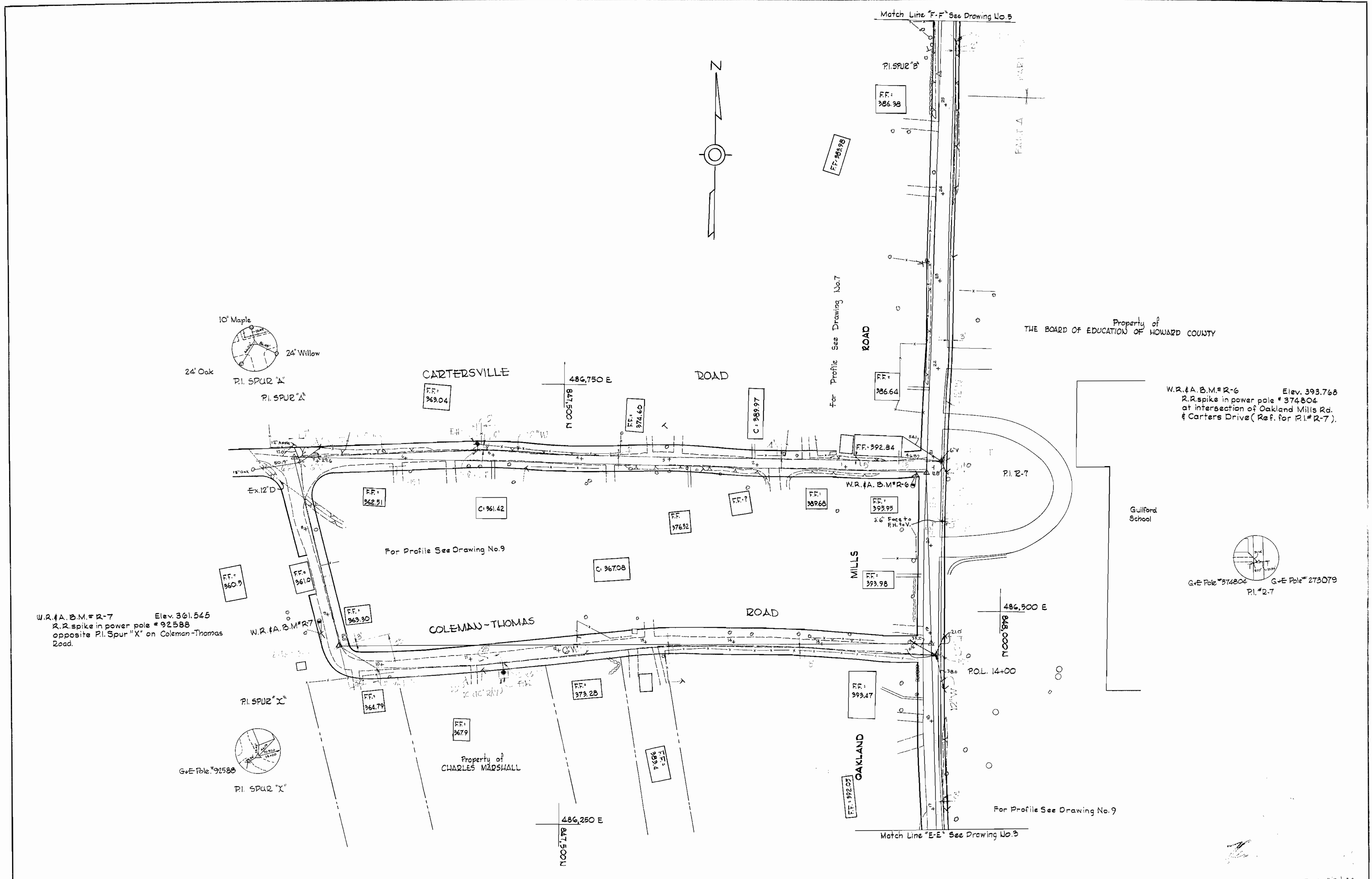
ELECTION DISTRICT
 GUILFORD NO. 6

DRAWING
 NO. 3
 OF 9

SCALE
 1"=50'

Part 3A

WS 178-W/3



WHITMAN, REQUARDT & ASSOCIATES
ENGINEERS
1304 ST. PAUL ST.
BALTIMORE, MARYLAND

HOWARD COUNTY METROPOLITAN COMMISSION
DATE: 6-21-68
W O Falbert
CHIEF ENGINEER

CONTRACT NO. 178-W

PLAN OF
WATER MAINS

ELECTION DISTRICT
GUILFORD NO. 6

DRAWING
NO. 4
OF 9
SCALE
1"=50'

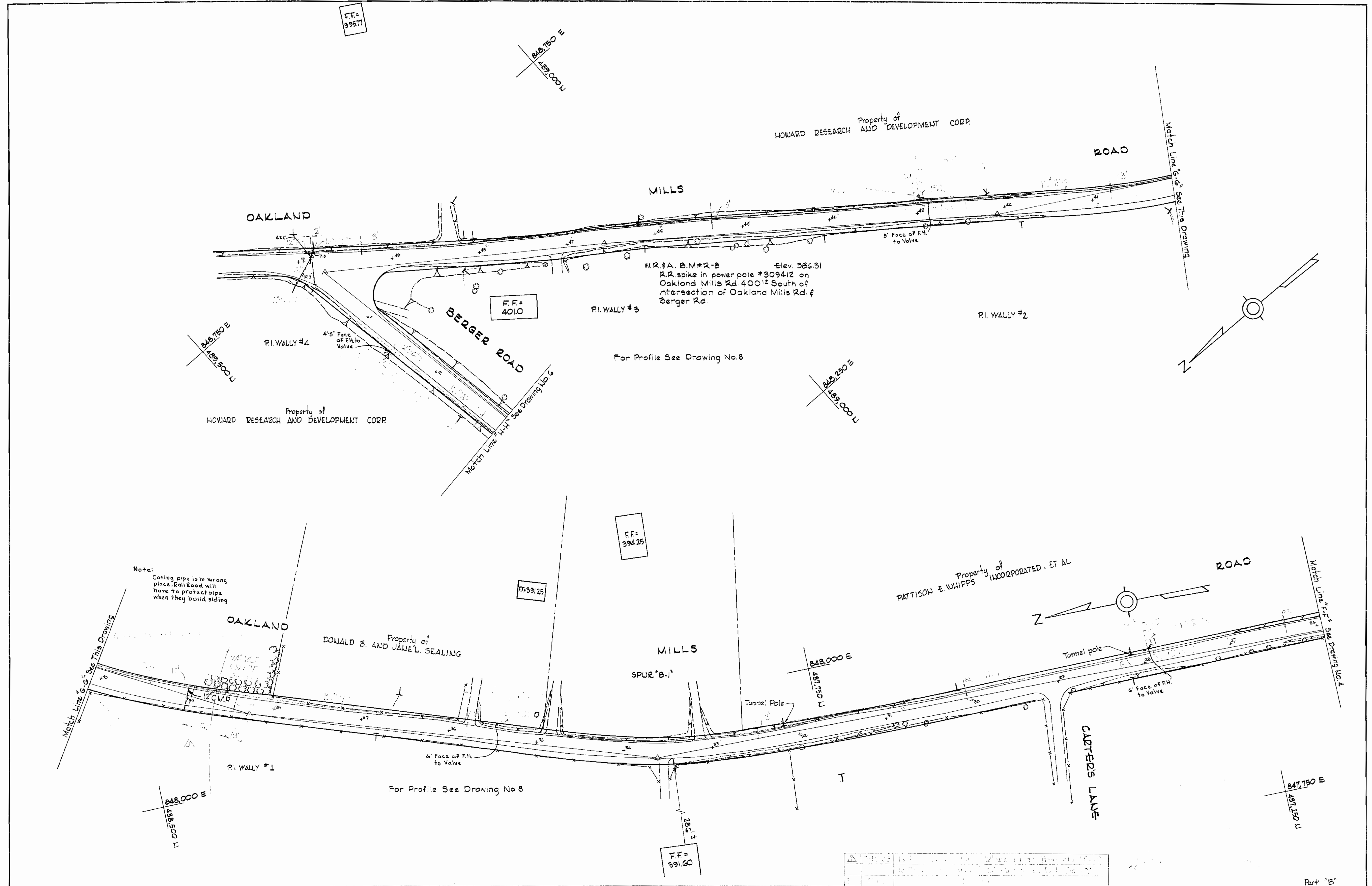
Parts "A" & "B"

W. O. 5839-2

NOV. 14, 1968

F.B. 3823
F.B. 3826

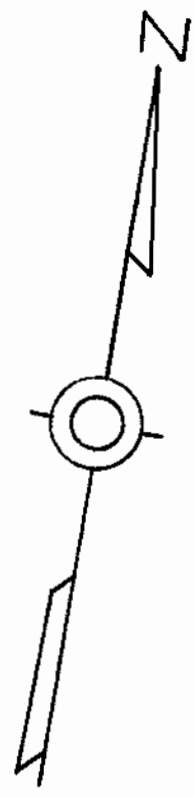
WS 178-W/4



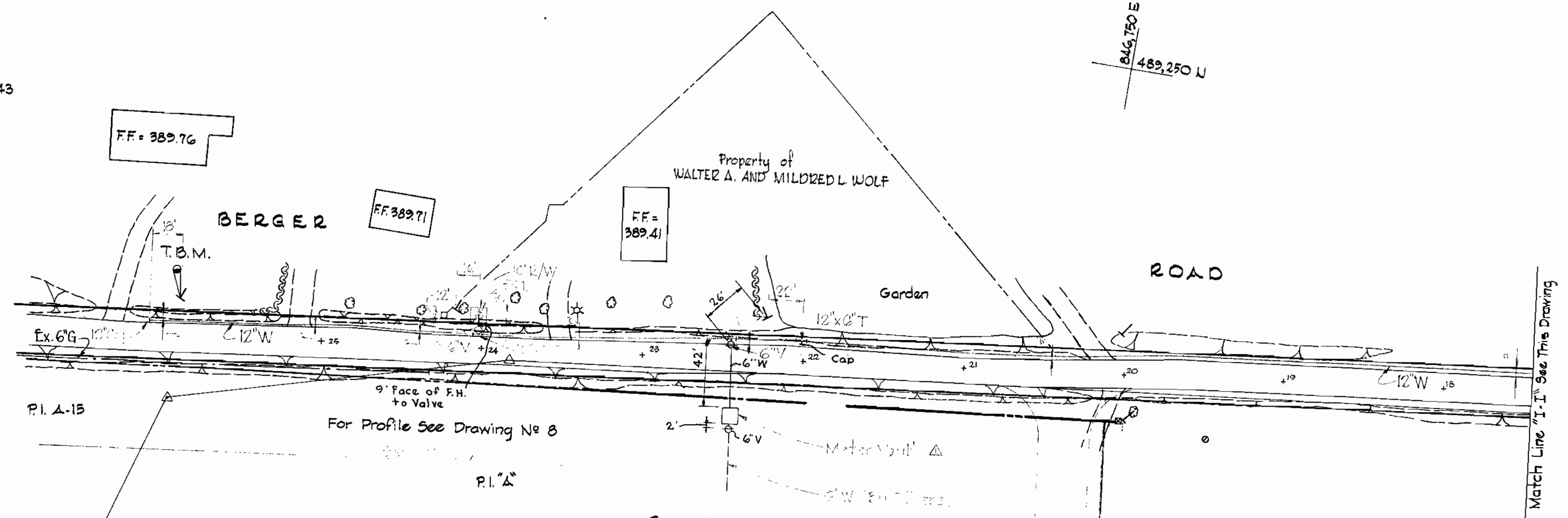
WHITMAN, REQUARDT & ASSOCIATES ENGINEERS 1304 ST. PAUL ST. BALTIMORE, MARYLAND	HOWARD COUNTY METROPOLITAN COMMISSION 6-21-68 <i>W. O. Fallant</i> <small>DATE</small> <small>CHIEF ENGINEER</small>	CONTRACT NO. 178-W	PLAN OF WATER MAINS	ELECTION DISTRICT GUILFORD NO. 6	DRAWING NO. 5 OF 9 SCALE 1"=50' <small>488-489, 490-492 489-490</small>
---	--	--------------------	------------------------	-------------------------------------	--

W. O. 5839-2 AS BUILT NOV. 11, 1968 F.B. 3792, 3906

WS 178-W/5



T.B.M. Elev. 388.943
Galvanized spike in power pole
359151 North side Berger Rd.
between P.I. "A" & P.I. prop. corner
#4 (Elev. on B.M. by others 389.09)



846,000 E
488,750 N

846,500 E
488,750 N

848,250 E
489,500 N

841,250 E
489,250 N

Property of
HOWARD RESEARCH AND DEVELOPMENT CORP.

BERGER

P.I. Guilford B.M. 4

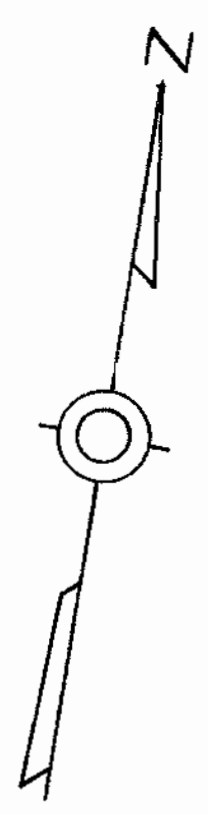
Property of
EMMA REBECCA THOMPSON AND PHILIP STCLAIR THOMPSON
C=395.11

ROAD

Match Line "I" See This Drawing

Match Line "II" See Drawing Up 5

P.I. Stone #7
847,250 E
489,000 N



FF 406.26

FF 406.47

C=397.39

C=399.21

Monument Guilford 1942

For Profile See Drawing No. 8

P.I. WALLY #5

WHITMAN, REQUARDT & ASSOCIATES
ENGINEERS
1304 ST. PAUL ST.
BALTIMORE, MARYLAND

HOWARD COUNTY METROPOLITAN COMMISSION
DATE 6-21-68
W. O. 5839-2
W. O. 5839-2
CHIEF ENGINEER

CONTRACT NO. 178-W

PLAN OF
WATER MAINS

ELECTION DISTRICT
GUILFORD NO. 6

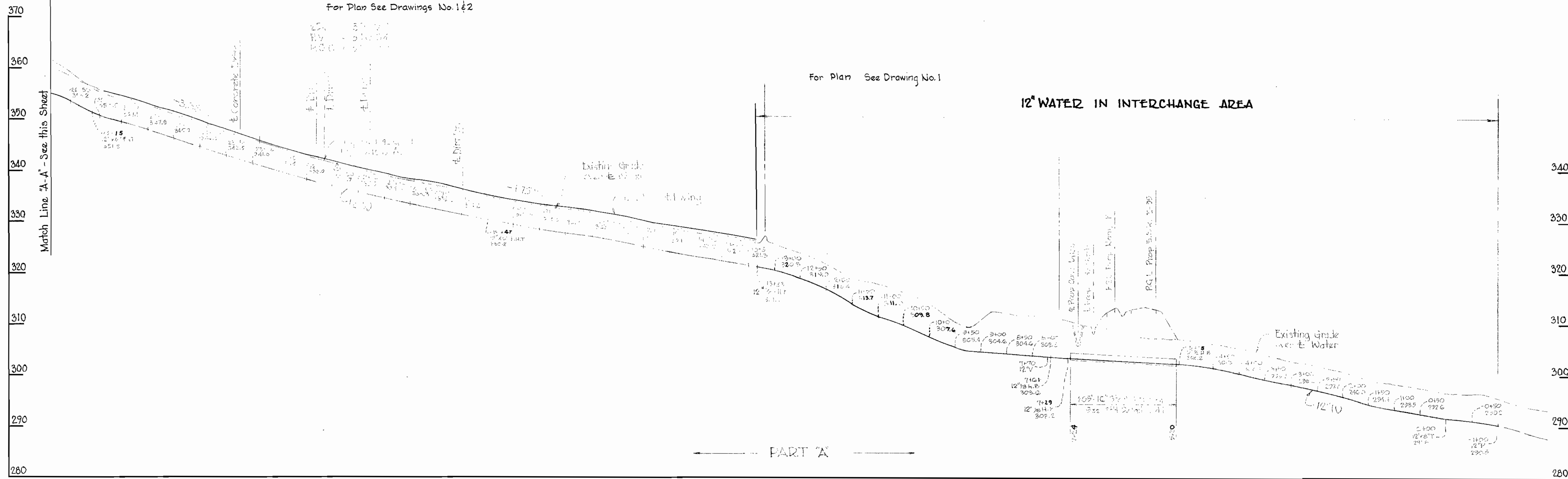
DRAWING
NO. 6
OF 9
SCALE
1"=50'

Part "B"

WS 178-W/6

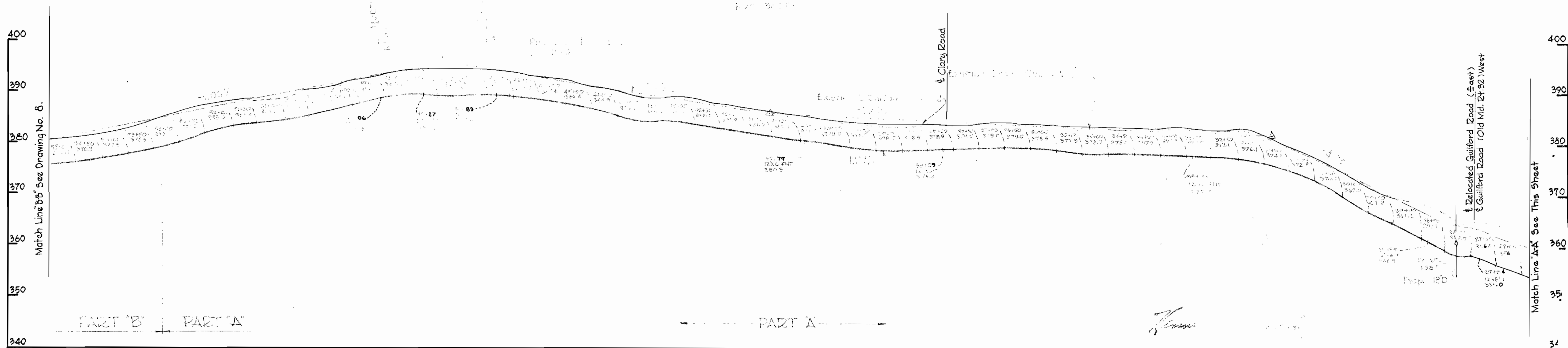
GUILFORD ROAD (OLD MD. ROUTE 32)

For Plan See Drawings No. 1 & 2



OAKLAND MILLS ROAD

For Plan See Drawing No. 2, 3 & 4



WHITMAN, REQUARDT & ASSOCIATES
ENGINEERS
1304 ST. PAUL ST.
BALTIMORE, MARYLAND

HOWARD COUNTY METROPOLITAN COMMISSION
DATE: 6-21-69
C. O. FALLON
CHIEF ENGINEER

CONTRACT NO. 178-W

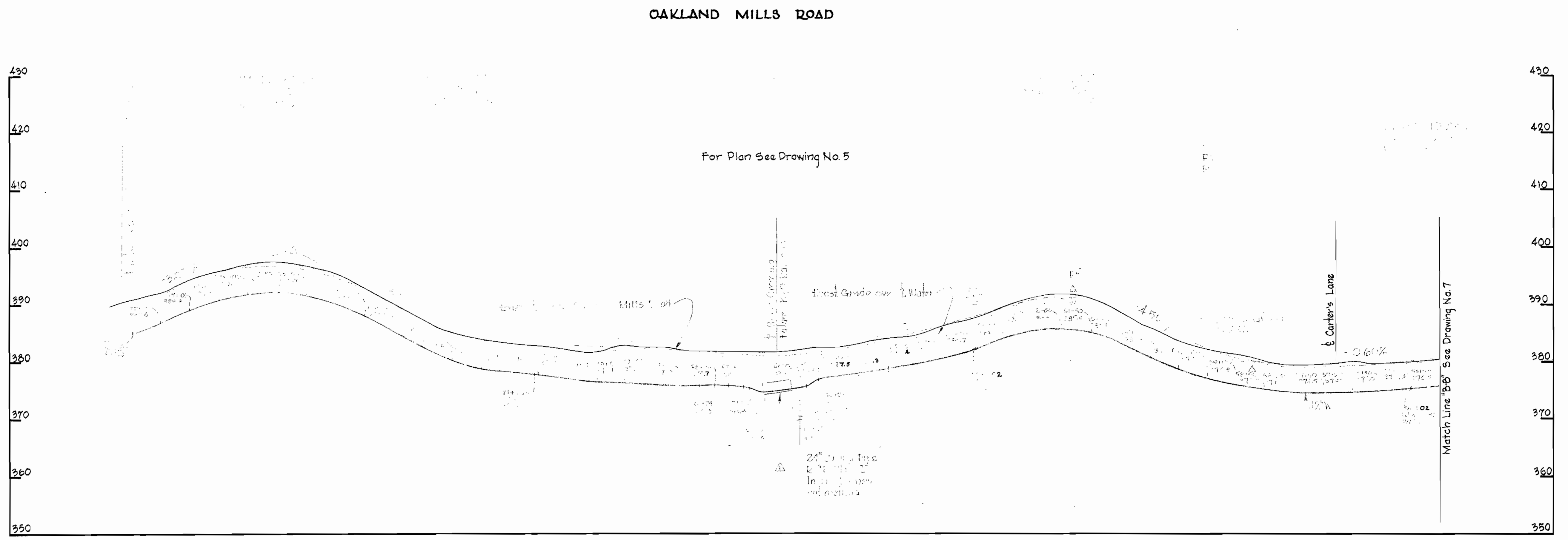
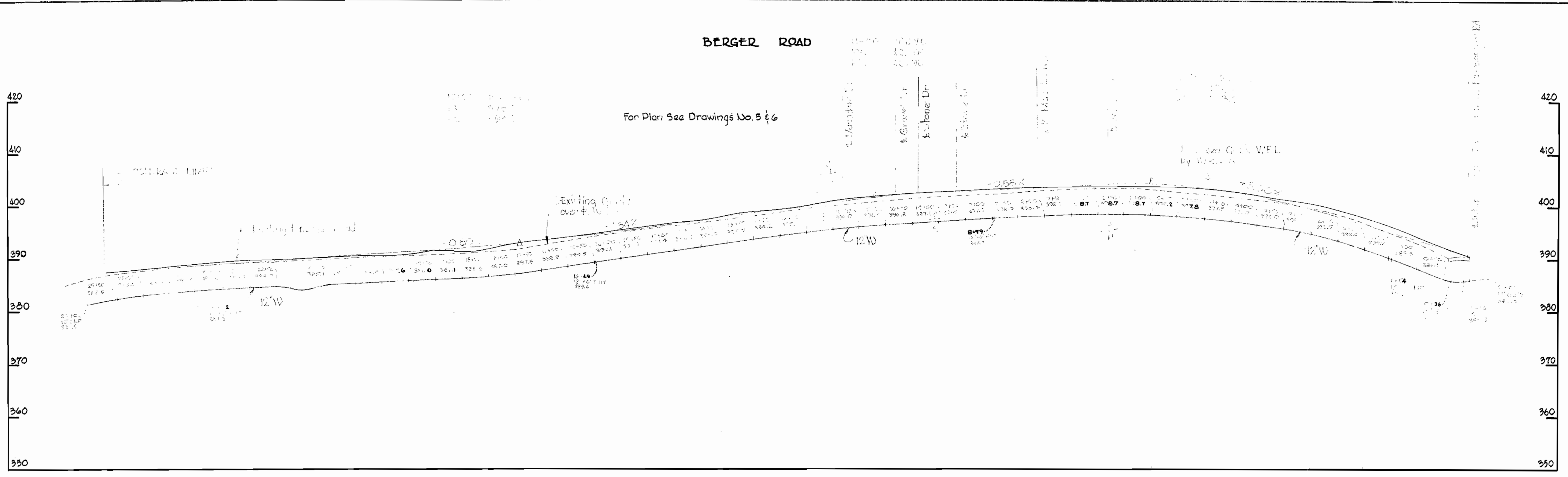
PROFILE OF
WATER MAINS

ELECTION DISTRICT
GUILFORD No. 6

DRAWING
NO. 7
OF 9

SCALE
H: 1"=100'
V: 1"=10'

WS 178-W/7



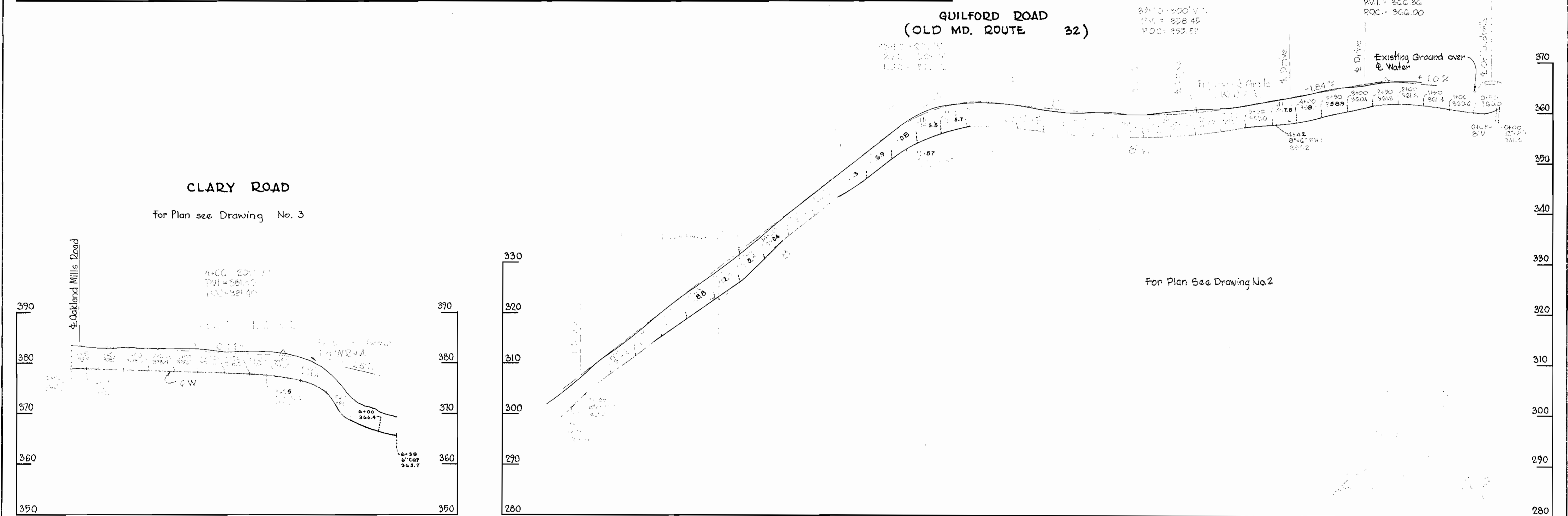
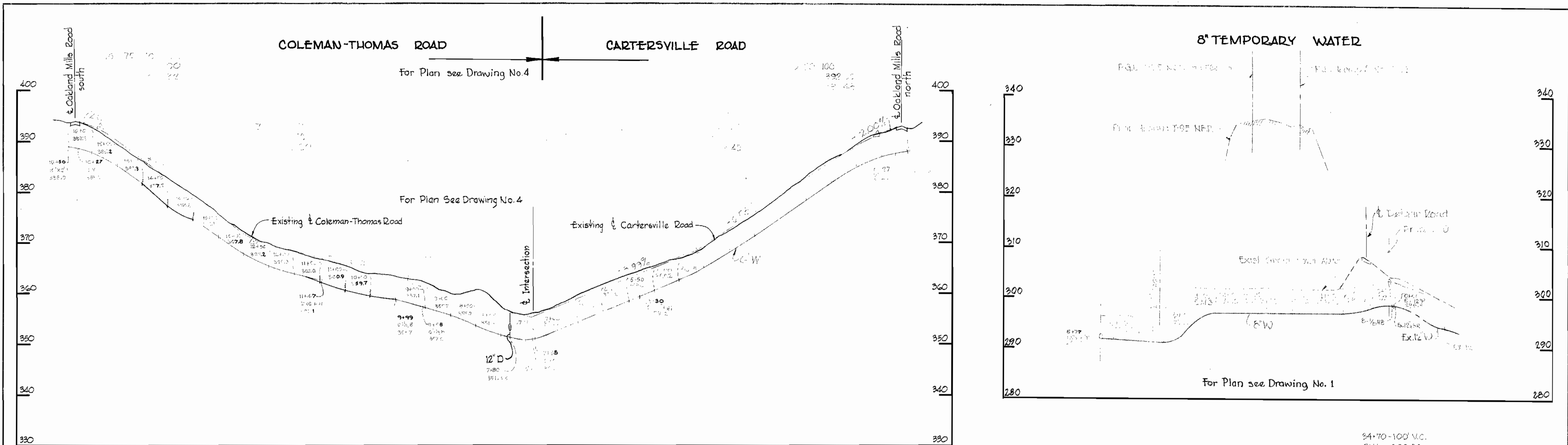
Revised	1-15-68	Revised Oakland Mills San. Profile from Station 10+00 to 11+00
As Shown	1-15-68	Revised Oakland Mills San. Profile from Station 11+00 to 12+00

WHITMAN, REQUARDT & ASSOCIATES ENGINEERS 1304 ST. PAUL ST. BALTIMORE, MARYLAND	HOWARD COUNTY METROPOLITAN COMMISSION 6-21-68 <i>wofilbert</i> CHIEF ENGINEER	CONTRACT NO. 178-W	PROFILE OF WATER MAINS	ELECTION DISTRICT GUILFORD No. 6	DRAWING NO. 8	SCALE H:1"=100' V:1"=10'	Part 'B'
					OF 9		

W. O. 5639-2

NOV. 14, 1968

WS 178-W/8



WHITMAN, REQUARDT & ASSOCIATES ENGINEERS 1304 ST. PAUL ST. BALTIMORE, MARYLAND	HOWARD COUNTY METROPOLITAN COMMISSION 6-21-69 <i>W. O. Filbert</i> <small>CITY ENGINEER</small>	CONTRACT NO. 178-W	PROFILE OF WATER MAINS	ELECTION DISTRICT GUILFORD No. 6	DRAWING NO. 9 OF 9	SCALE H:1"=100' V:1"=10'
---	---	--------------------	---------------------------	-------------------------------------	--------------------------	--------------------------------

W. O. 5839-2

178-W/9