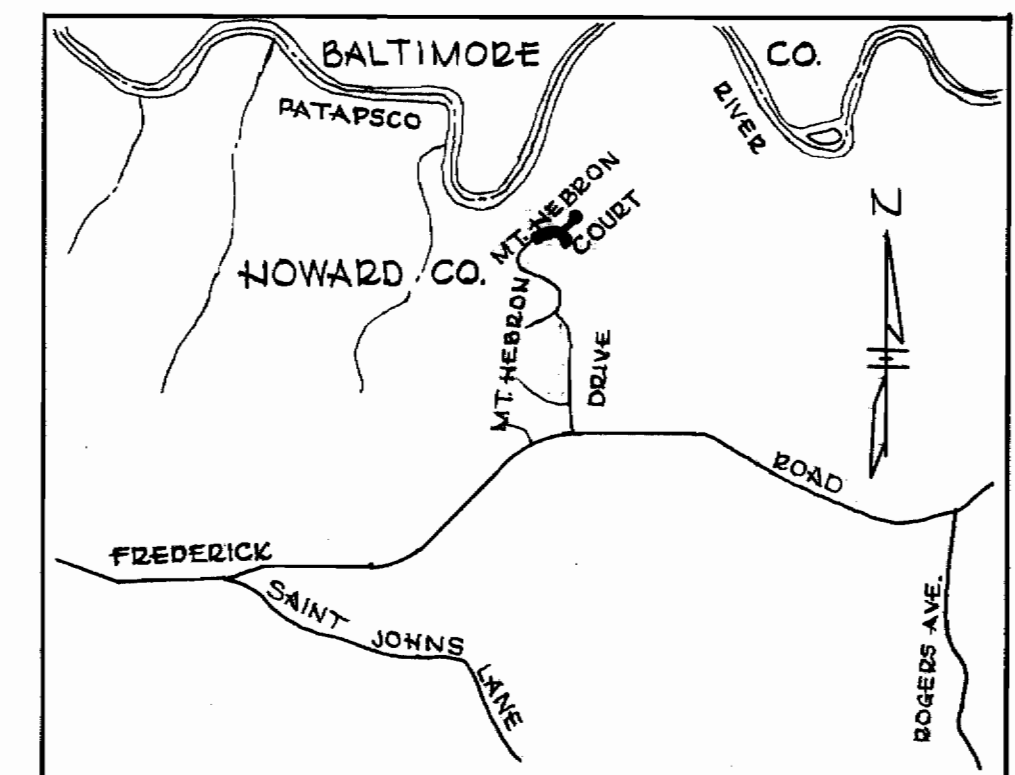
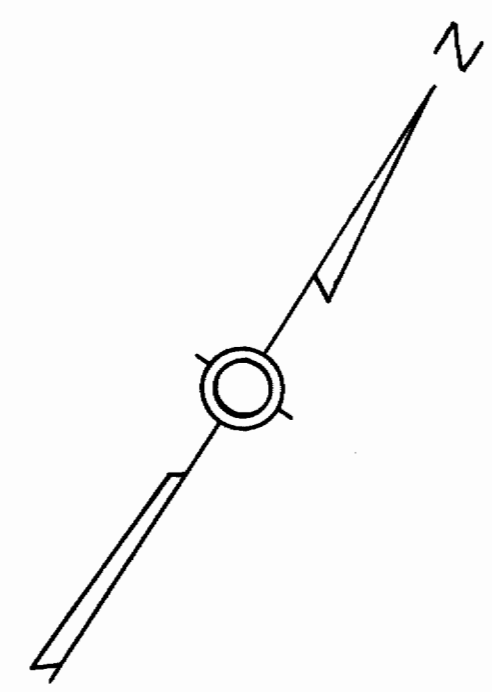
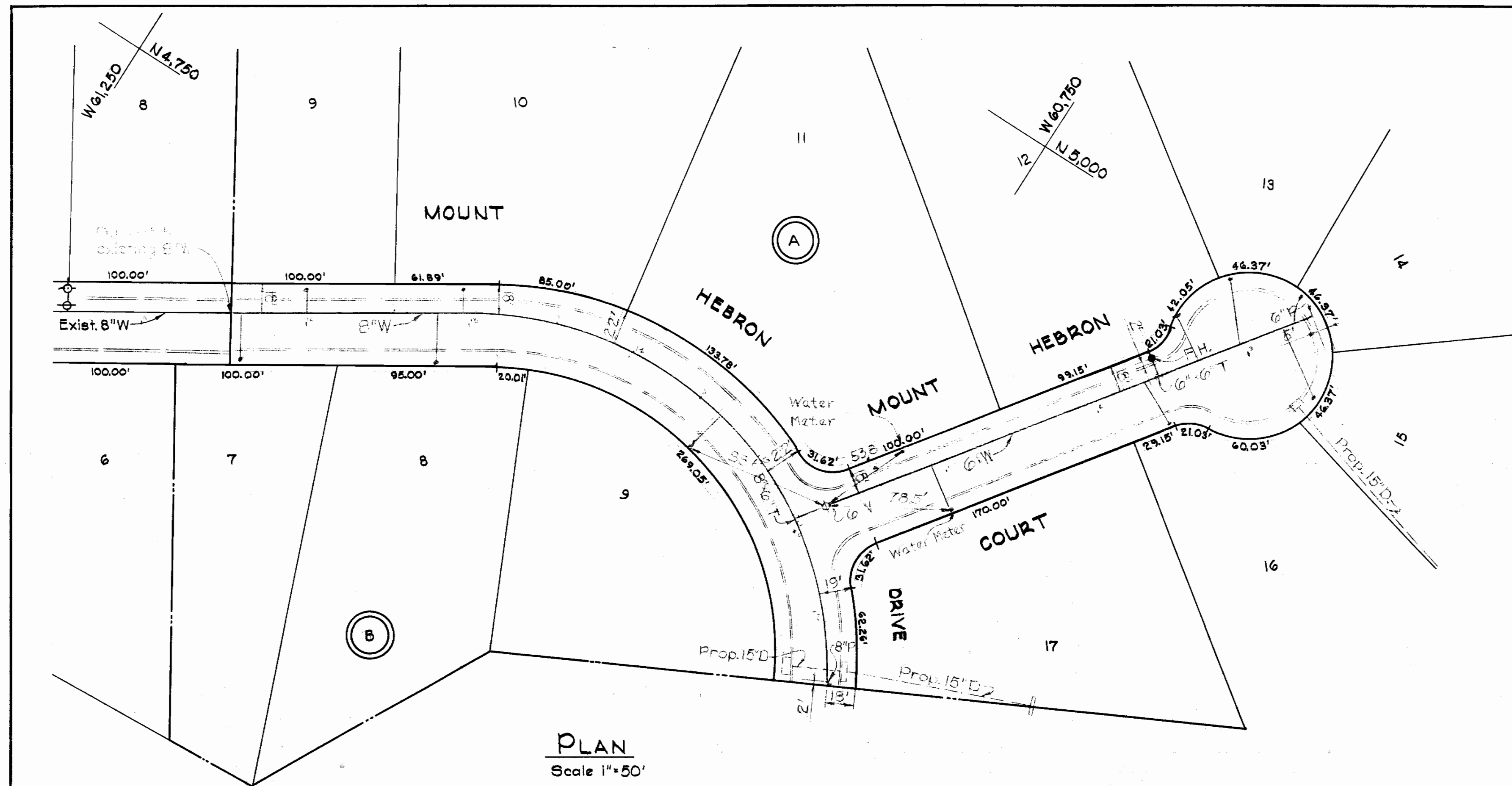
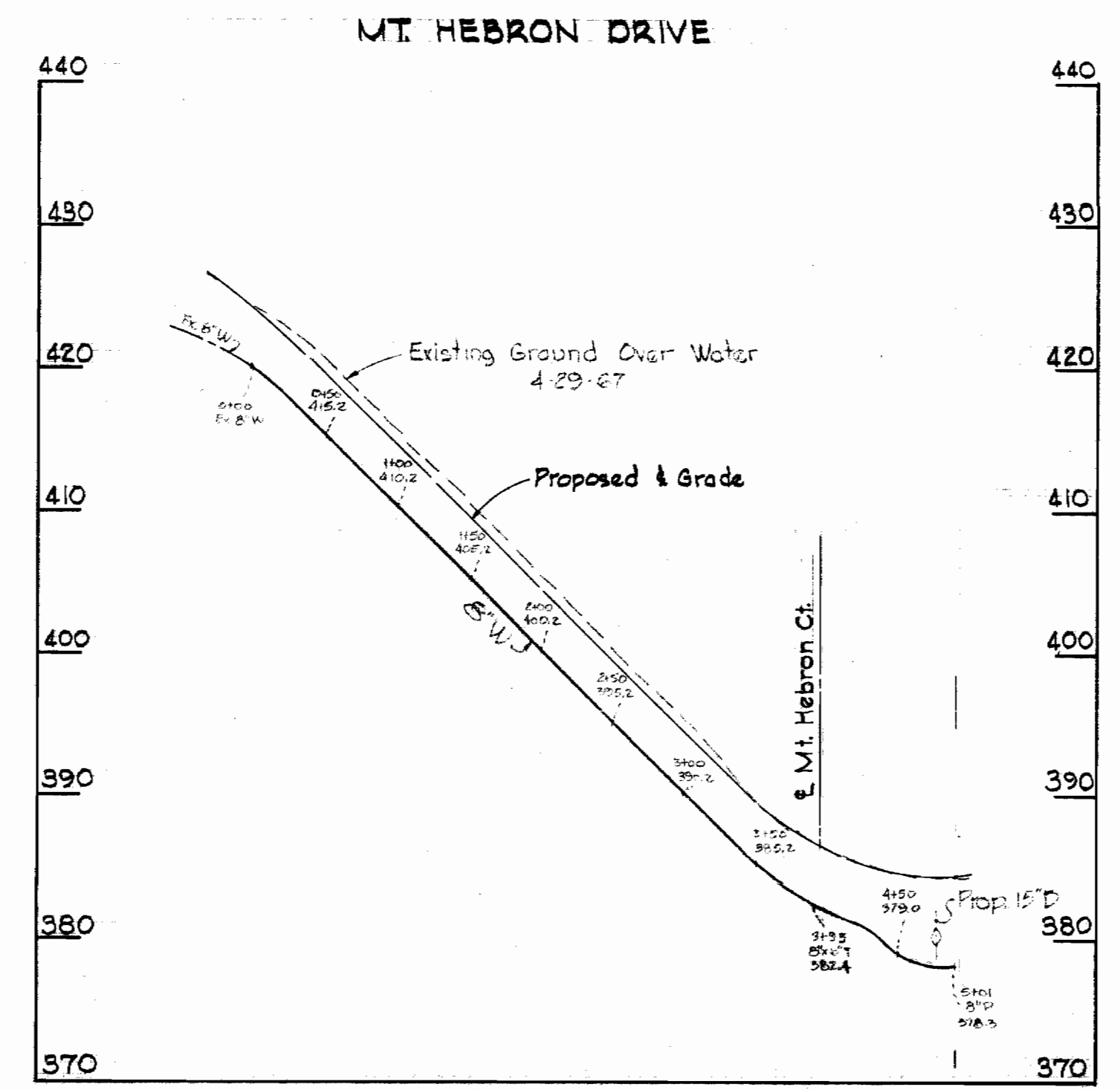


Suspend ext

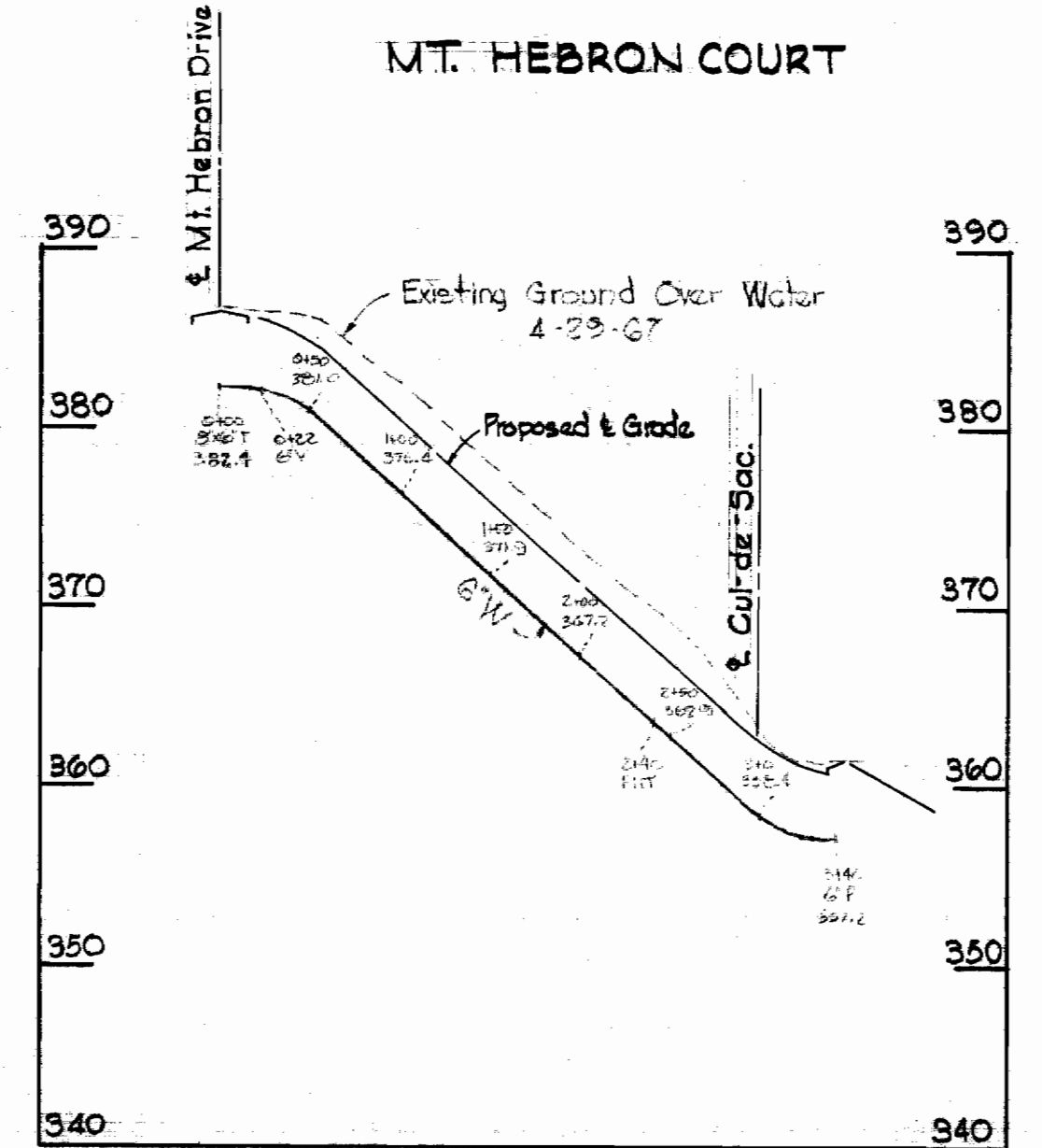
Suspend ext



VICINITY MAP
Scale 1" = 1/4 mile



PROFILE
Hor. 1"=100'
Scale: Vert. 1"=10'



PROFILE
Hor. 1"=100'
Scale: Vert. 1"=10'

GENERAL NOTES

1. Approximate locations of existing mains are shown. The Contractor shall take all necessary precautions to protect existing mains and services and maintain uninterrupted service. Any damage incurred shall be repaired immediately.
2. All pipe elevations shown are invert elevations.
3. The Contractor shall locate existing utilities a minimum of two weeks in advance of construction operations in vicinity of utilities.
4. For all standard details see standards bound in Specifications.
5. All water mains to be C.I.P. or D.I.P. and have a minimum of 3 1/2' cover.
6. Block all fittings with concrete, see standard details bound in Specifications.
7. Bury line elevation on fire hydrants shall be set the same as edge of paving, top of curb, or as directed by Engineer in the field.
8. All Fire Hydrants shall be buttressed with concrete in accordance with Standard Detail W-4.

NOTE:
On or before the date of award,
the existing ground over water
will be within .5' of the proposed
grade.



Kenneth A. McCord

Mt. Hebron Sect. No. 9
Contract #176-W

WHITMAN, REQUARDT & ASSOCIATES ENGINEERS 1304 ST. PAUL ST. BALTIMORE, MARYLAND	HOWARD COUNTY METROPOLITAN COMMISSION DATE: 4-20-67 CHIEF ENGINEER	CONTRACT NO. 176-W	PLAN AND PROFILE OF WATER MAINS	ELLICOTT CITY SUB-DISTRICT	DRAWING NO. 1 OF 1	SCALE AS SHOWN
---	--	--------------------	------------------------------------	----------------------------	--------------------------	----------------------

176-W/1