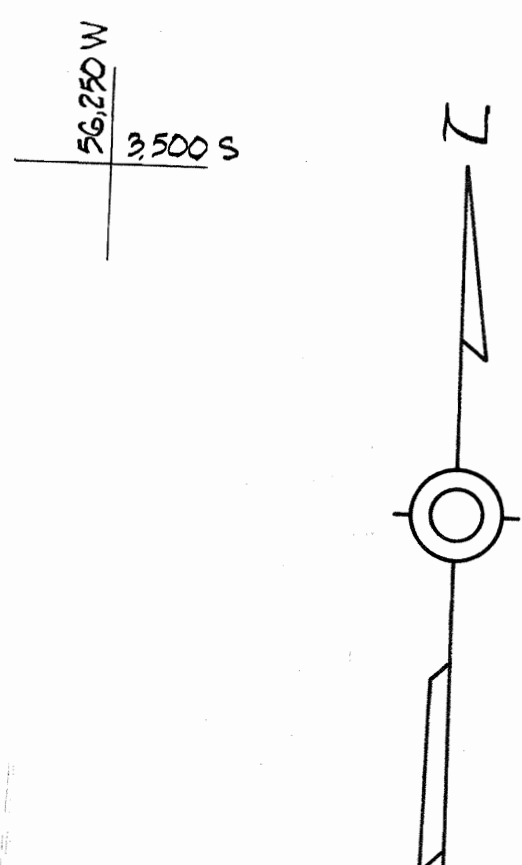


LOCATION MAP

Scale: 1" = 2000'

W.R. & A. B.M. # 20-A Elev. 390.26'
 R.R. spike base of G.E. pole # 203430
 W. side Rogers Ave. 1,000' ± N. of
 int. Rogers Ave. & U.S. Route 40

W.R. & A. B.M. # 20-B Elev. 393.56'
 R.R. spike base of G.E. pole # 203436
 on E. side Rogers Ave. 2,000' ± N. of
 int. Rogers Ave. & U.S. Route 40

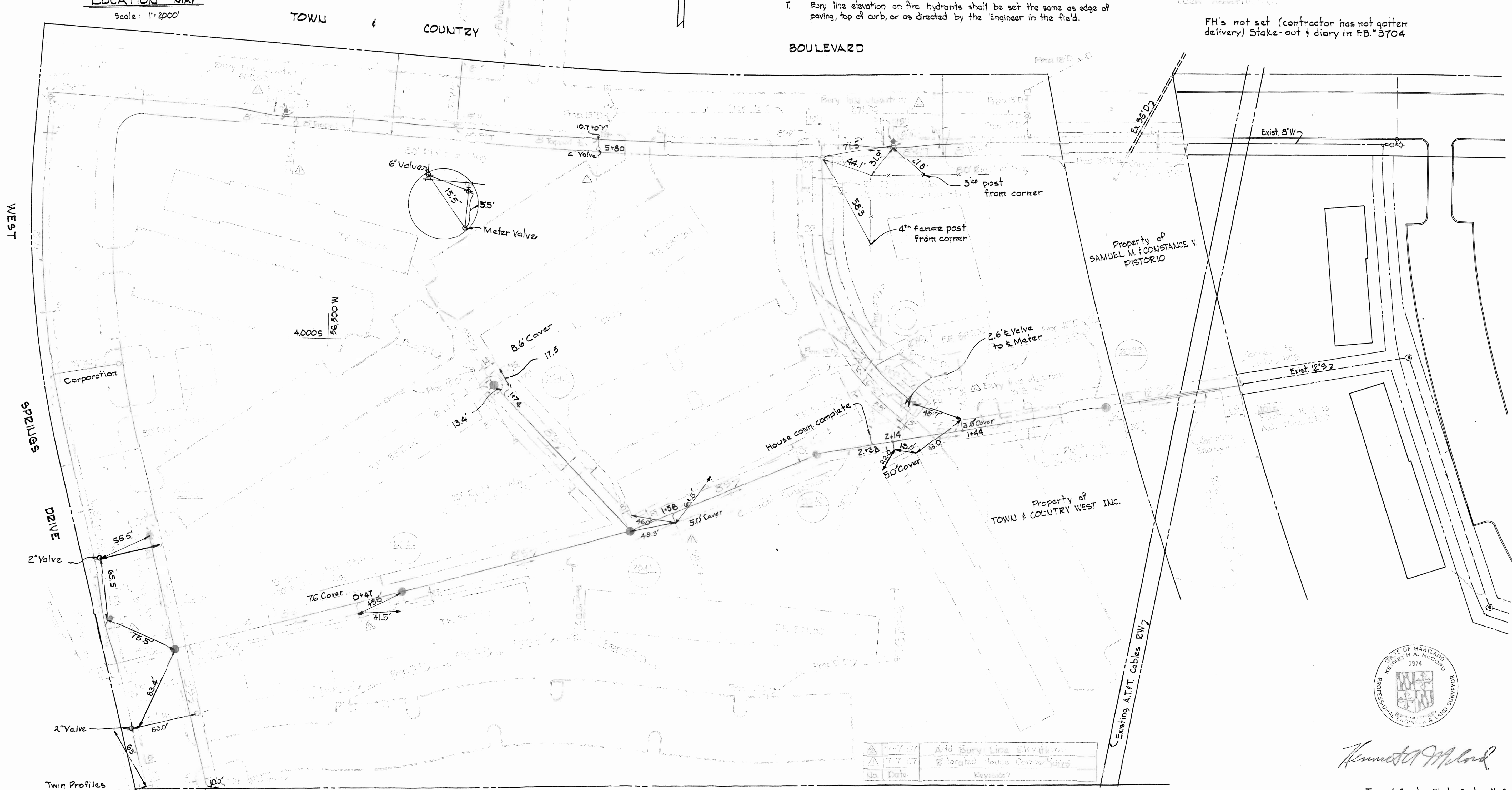


GENERAL NOTES

1. Approximate locations of existing mains are shown. The Contractor shall take all necessary precautions to protect existing mains and services and maintain uninterrupted supply. Any damage incurred shall be repaired immediately.
2. All pipe elevations shown are invert elevations.
3. The Contractor shall locate existing utilities a minimum of two weeks in advance of construction operations in vicinity of utilities.
4. For all standard details see standards bound in Specifications.
5. All water mains to be C.I.P. or D.I.P. and have a minimum of 36" cover.
6. Block all fittings with concrete, see standard details bound in Specifications.
7. Bury line elevation on fire hydrants shall be set the same as edge of paving, top of curb, or as directed by the Engineer in the field.
8. All fire hydrants shall be buttressed with concrete in accordance with Standard Detail W-4.
9. The Contractor shall notify the Telephone Company prior to any construction activities in the vicinity of the telephone cables by calling anytime 393-3553 in Baltimore, Maryland.
10. The Contractor shall provide a joint in all sewer mains within 2'-0" of exterior manhole walls.

NOTE:
 All proposed drains have been constructed.

FH's not set (contractor has not gotten delivery) Stake-out & diary in FB # 3704



△ 7-7-67	Add Bury Line Elevations
△ 7-7-67	Relocated House Connections
No. _____	Date _____
_____	Revised by _____

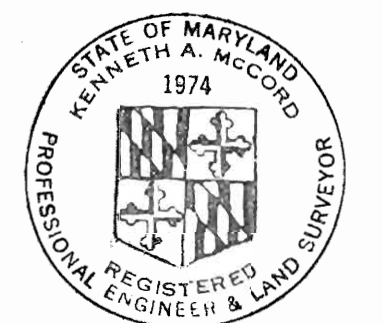
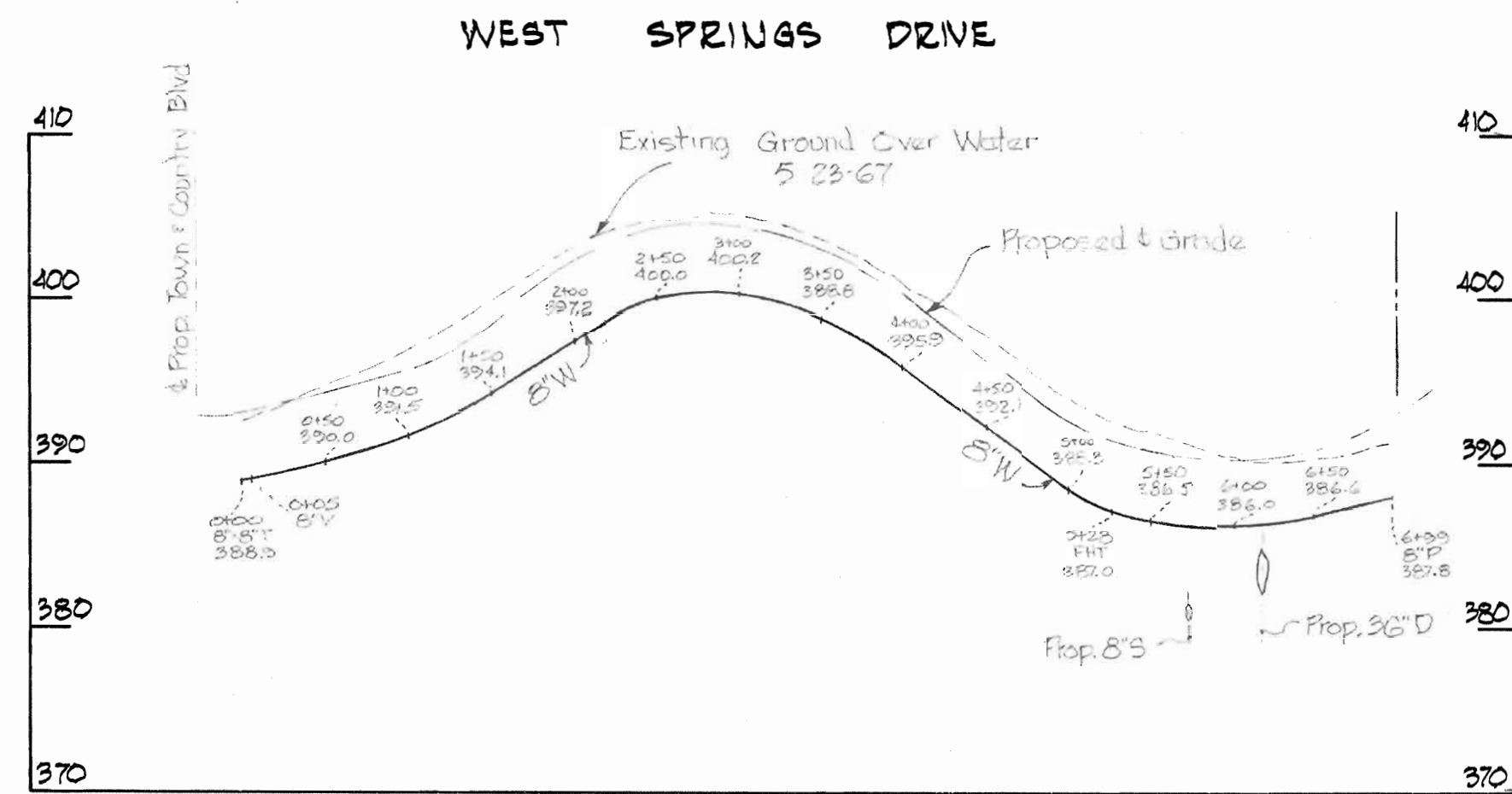
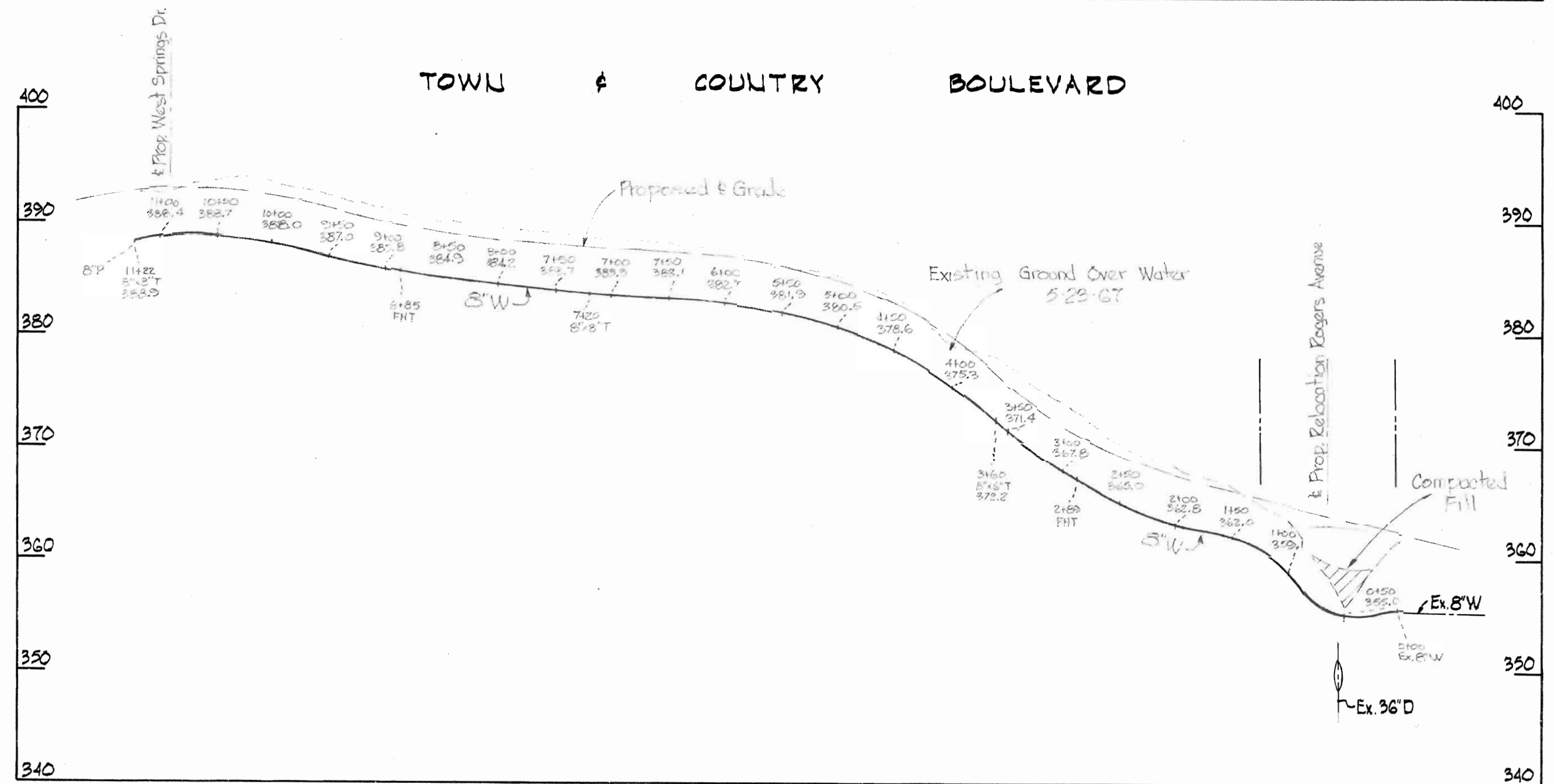
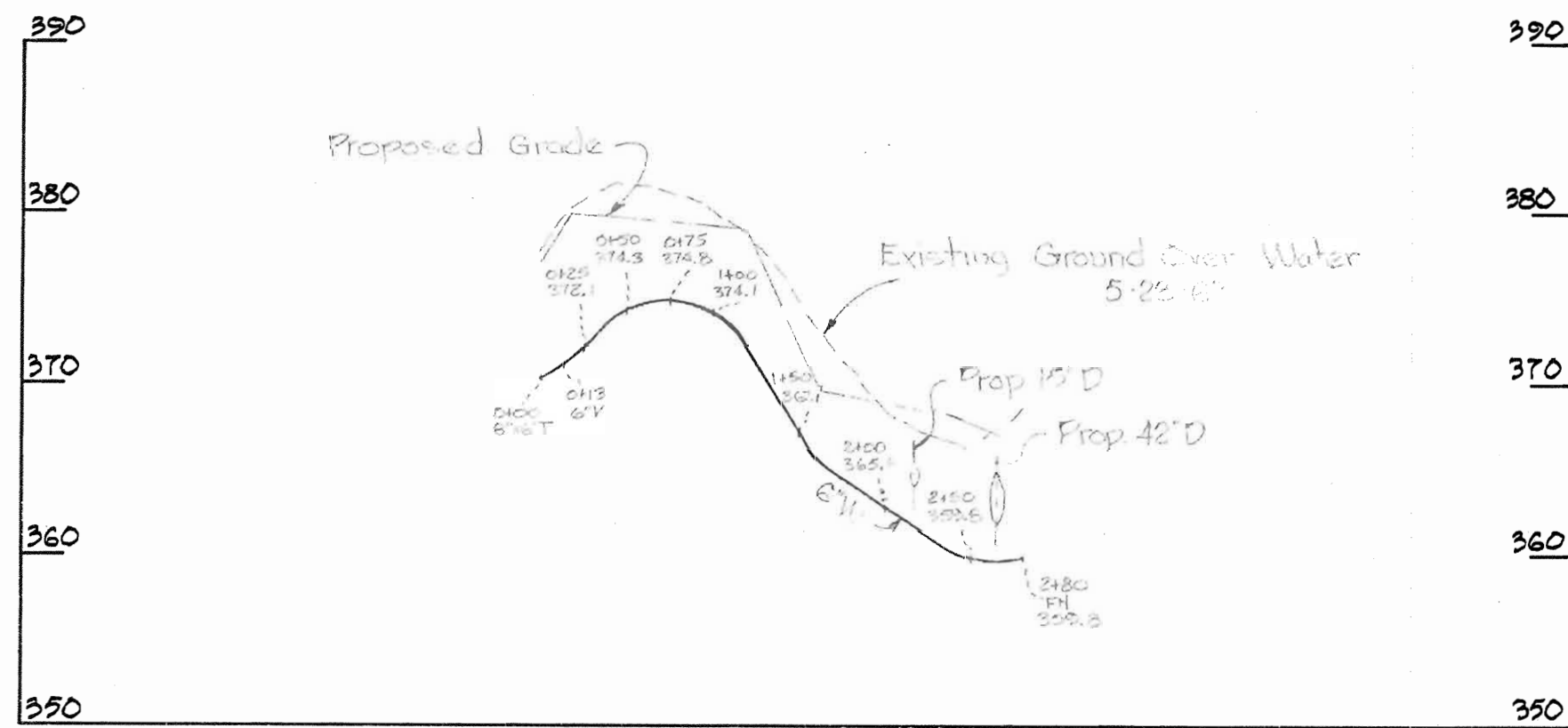
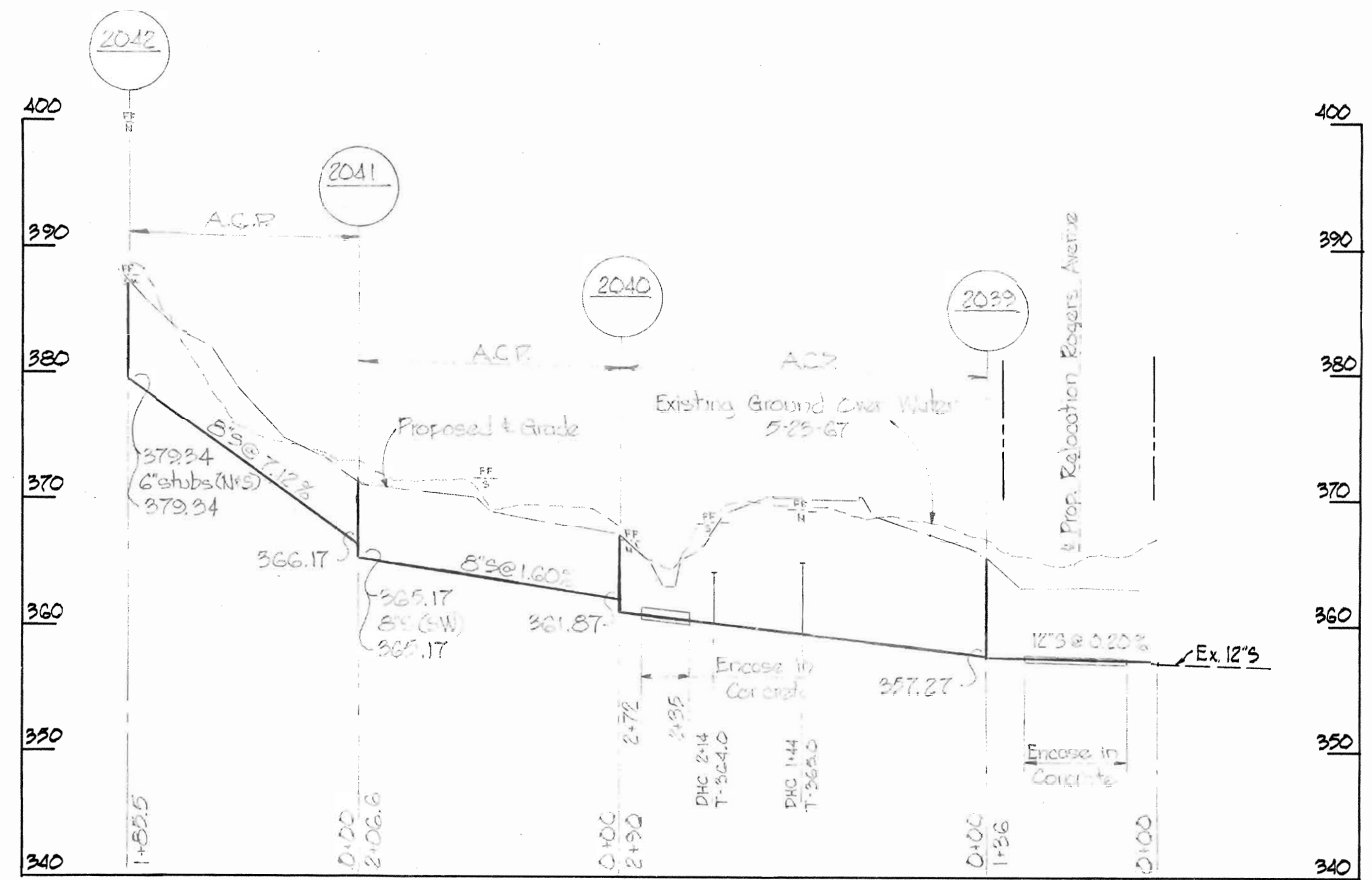
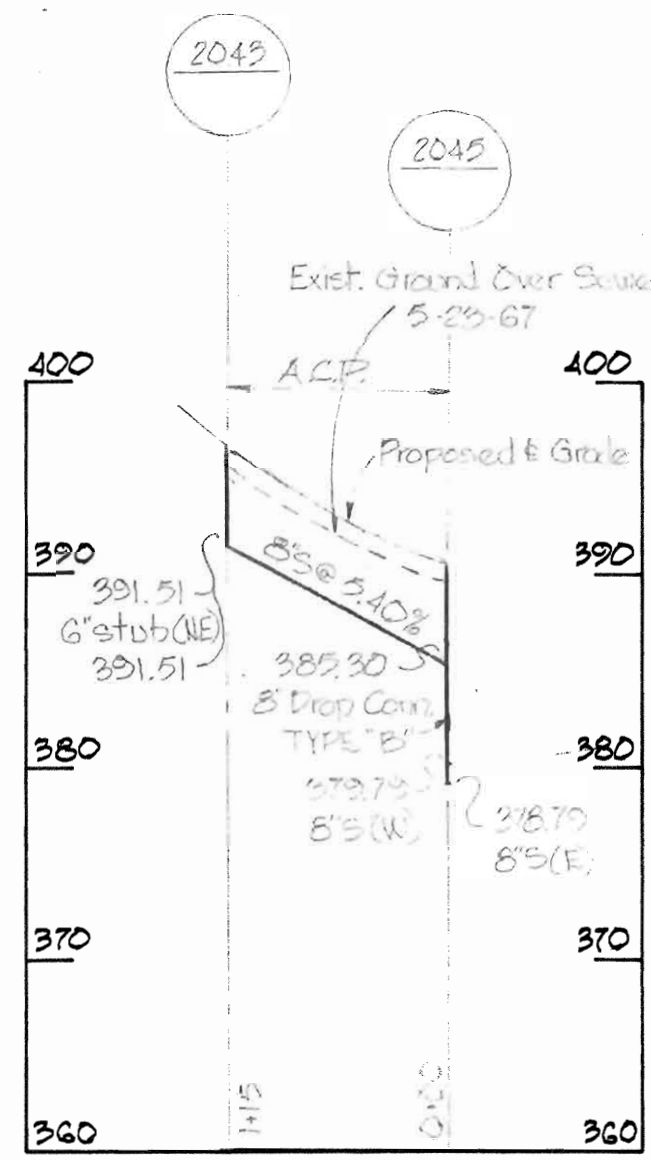
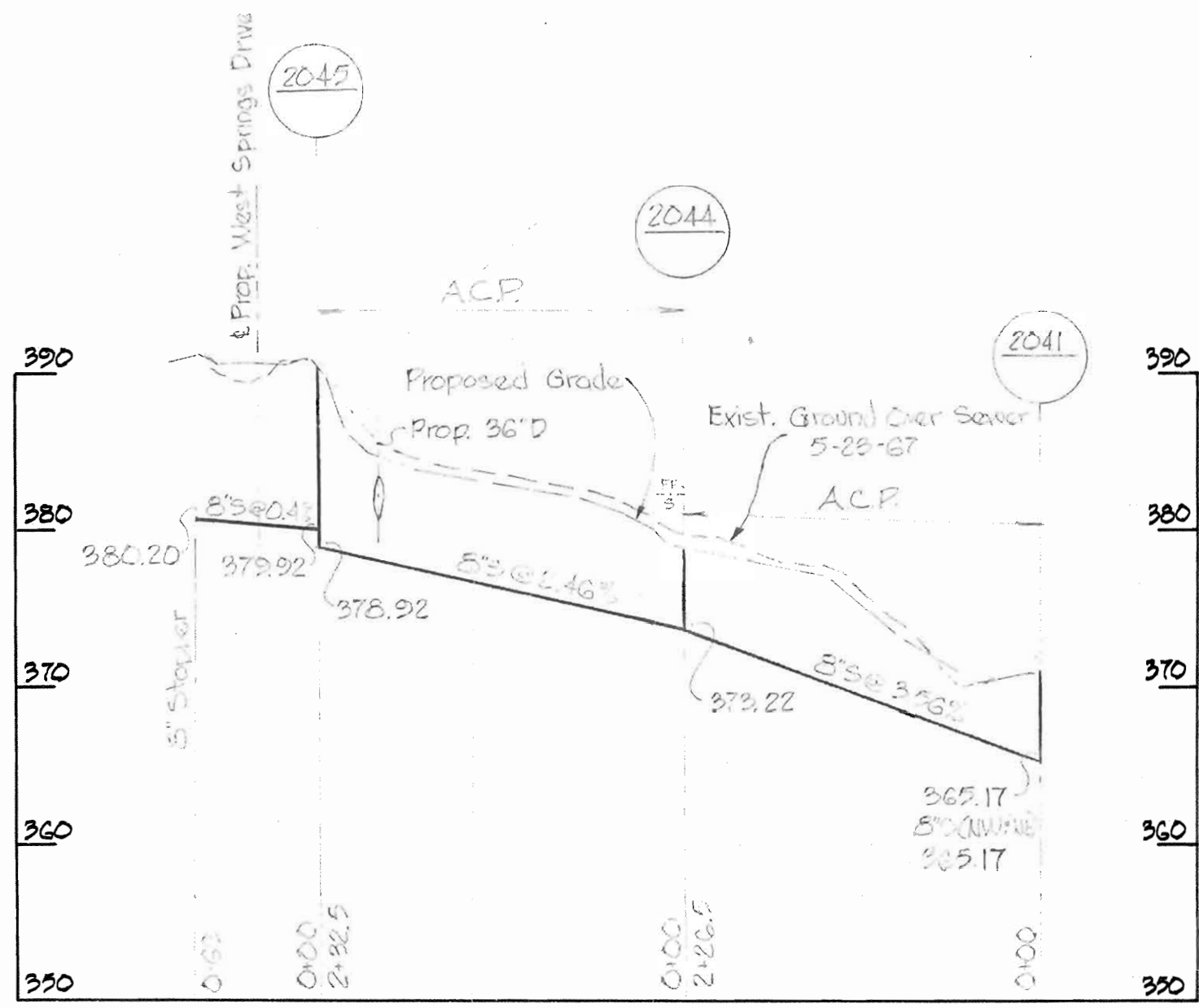
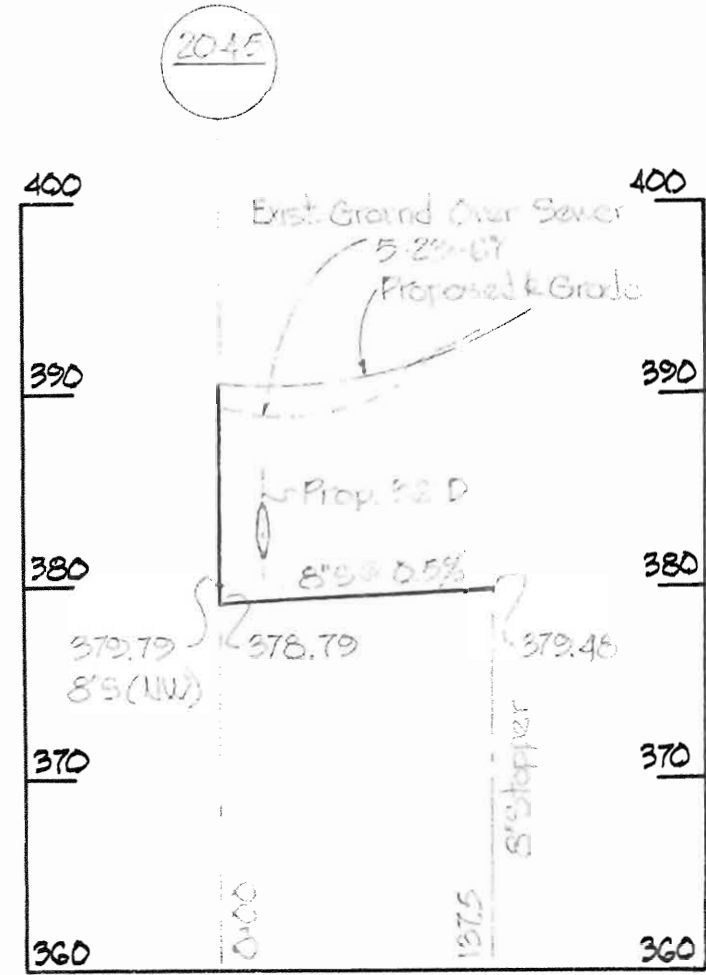


Kenneth A. McCord

Town & Country West Section No. 2
 Contract No. 174 W&S

WS 174-W&S/1

WHITMAN, REQUARDT & ASSOCIATES ENGINEERS 1304 ST. PAUL ST. BALTIMORE, MARYLAND	HOWARD COUNTY METROPOLITAN COMMISSION DATE: 5-18-67 <i>W. O. Robert</i> CHIEF ENGINEER	CONTRACT NO. 174-W&S	PLAN OF WATER & SEWER MAINS	ELLICOTT CITY SUB-DISTRICT
DRAWING NO. 1 OF 2		SCALE 1" = 50'		4 W 98 5 W 97 5 W 96



Kenneth A. McCord

WHITMAN, REQUARDT & ASSOCIATES ENGINEERS 1304 ST. PAUL ST. BALTIMORE, MARYLAND	HOWARD COUNTY METROPOLITAN COMMISSION DATE: 5-18-67 <i>W O Libut</i> CHAIRMAN	CONTRACT NO. 174-W&S	PROFILES OF WATER & SEWER MAINS	ELLICOTT CITY SUB-DISTRICT	DRAWING NO. 2 OF 2	SCALE H-1"=100' V-1"=10'
---	--	----------------------	------------------------------------	----------------------------	--------------------------	--------------------------------

W.O. 5129-2

Sept. 6, 1967 AS BUILT

WS 174-W&S/2