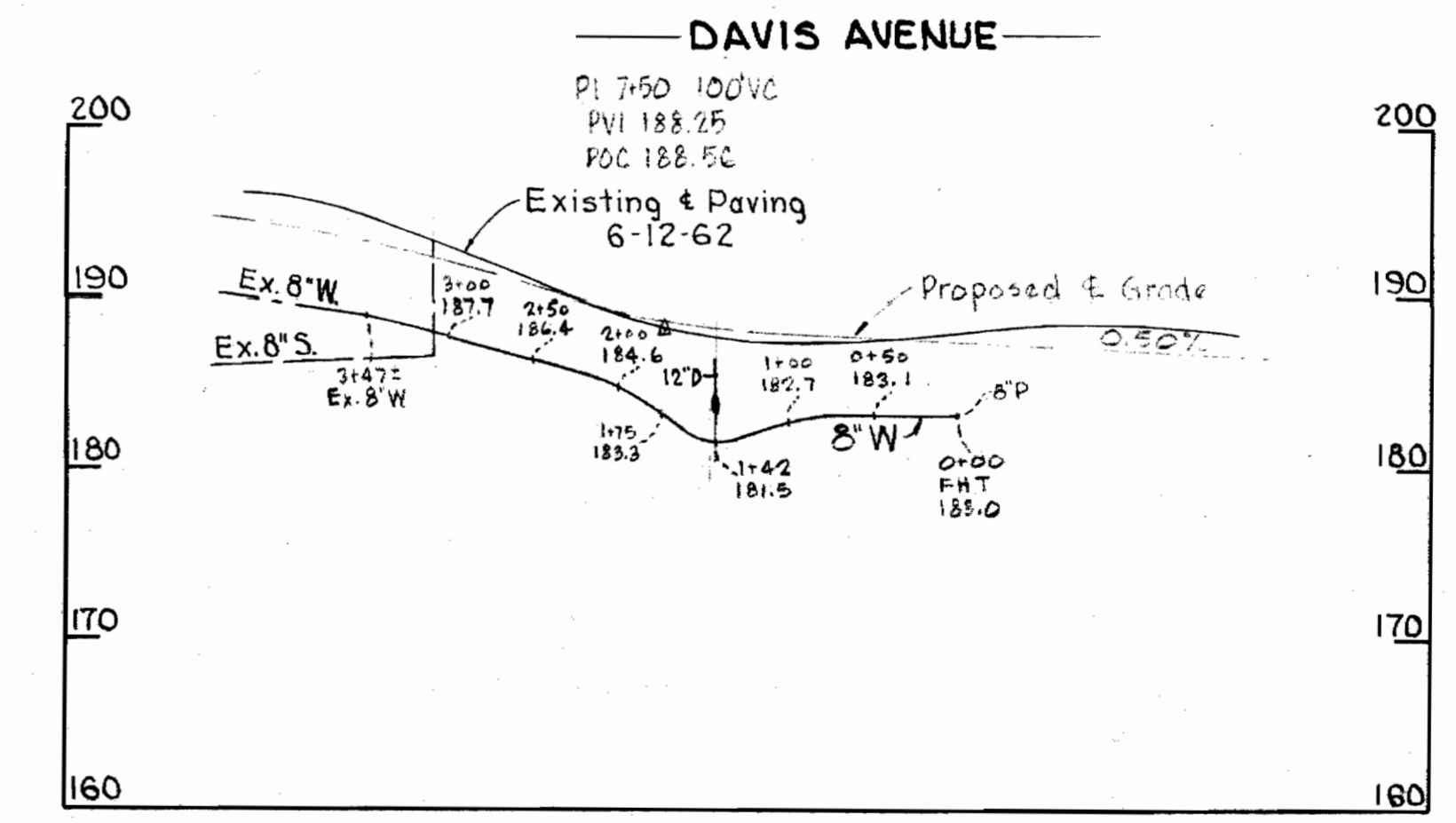
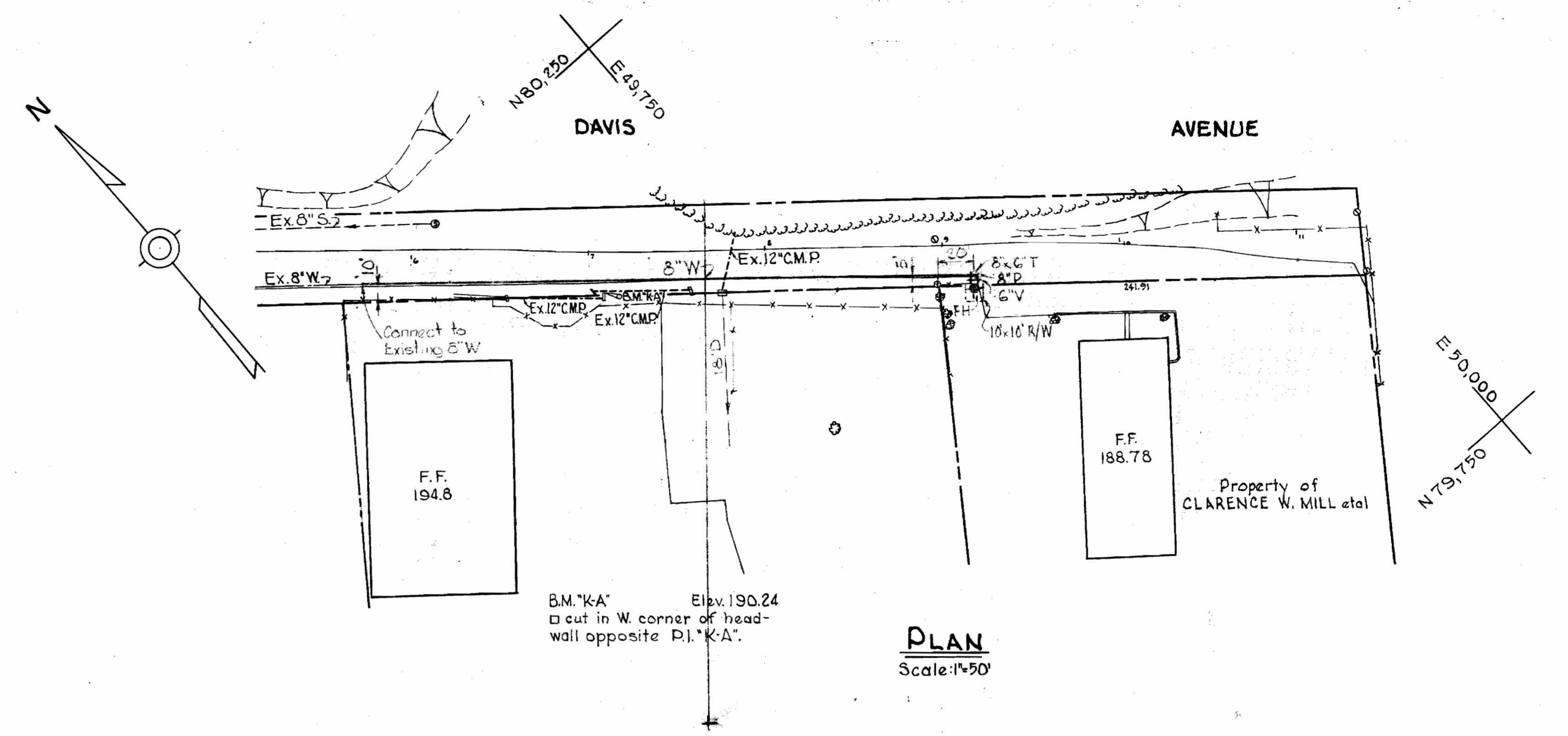
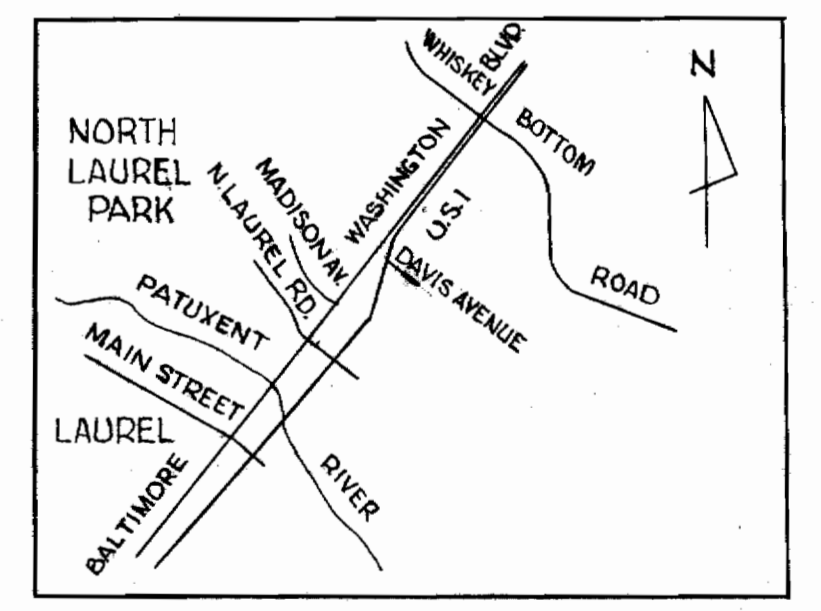


GENERAL NOTES

1. Approximate location of existing mains are shown. The Contractor shall take all necessary precautions to protect the existing mains and services and maintain uninterrupted supply. Any damage incurred shall be repaired immediately.
2. All pipe elevations shown are invert elevations.
3. The Contractor shall locate existing utilities a minimum of two weeks in advance of construction operations in vicinity of utilities.
4. Bury line elevation on fire Hydrants shall be set the same as edge of paving or as directed by the Engineer in the field.
5. For all standard details see Standards bound in specifications.
6. Block all fittings with concrete. See Standard Details.
7. Unless otherwise noted, all 6" & 8" W to be Class 22 C.I.P. Water mains to have a minimum of 3 1/2' of cover unless otherwise noted.



PROFILE
Scale: H. 1"=100'
V. 1"=10'



VICINITY MAP
Scale: 1"= 1/2 mile

155 2/15

WHITMAN, REQUARDT & ASSOCIATES ENGINEERS 1304 ST. PAUL ST. BALTIMORE, MARYLAND	HOWARD COUNTY METROPOLITAN COMMISSION 9-2-66 DATE CHIEF ENGINEER	CONTRACT NO. 155-W	PLAN AND PROFILE OF WATER MAINS	ELECTION DISTRICT GUILFORD NO. 6	DRAWING NO. 1 OF 1 SCALE AS SHOWN 40NE17-2 41NE17-4
---	--	--------------------	------------------------------------	-------------------------------------	--

Contract 155-W