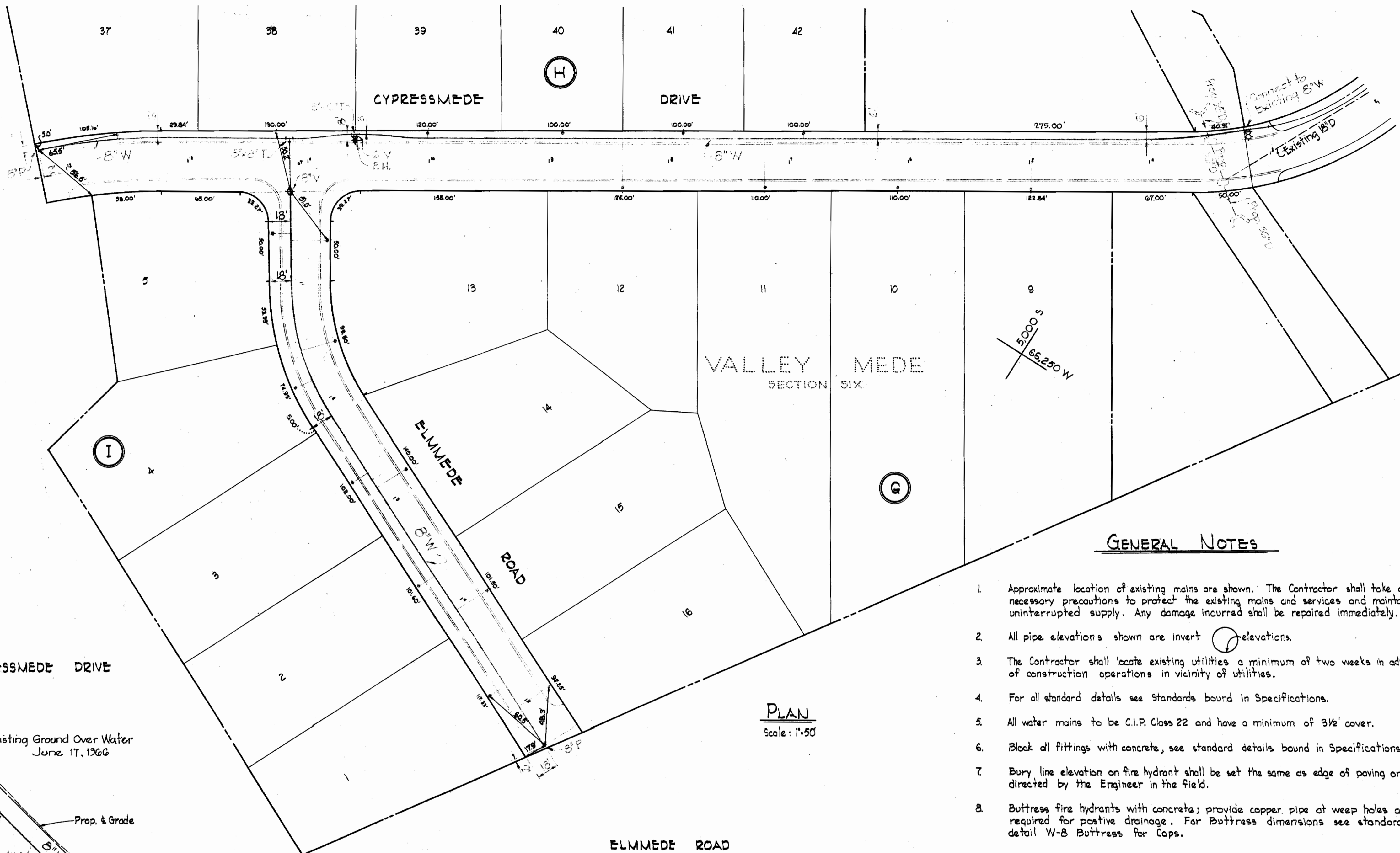


LOCATION MAP
Scale: 1" = 1/2 mile

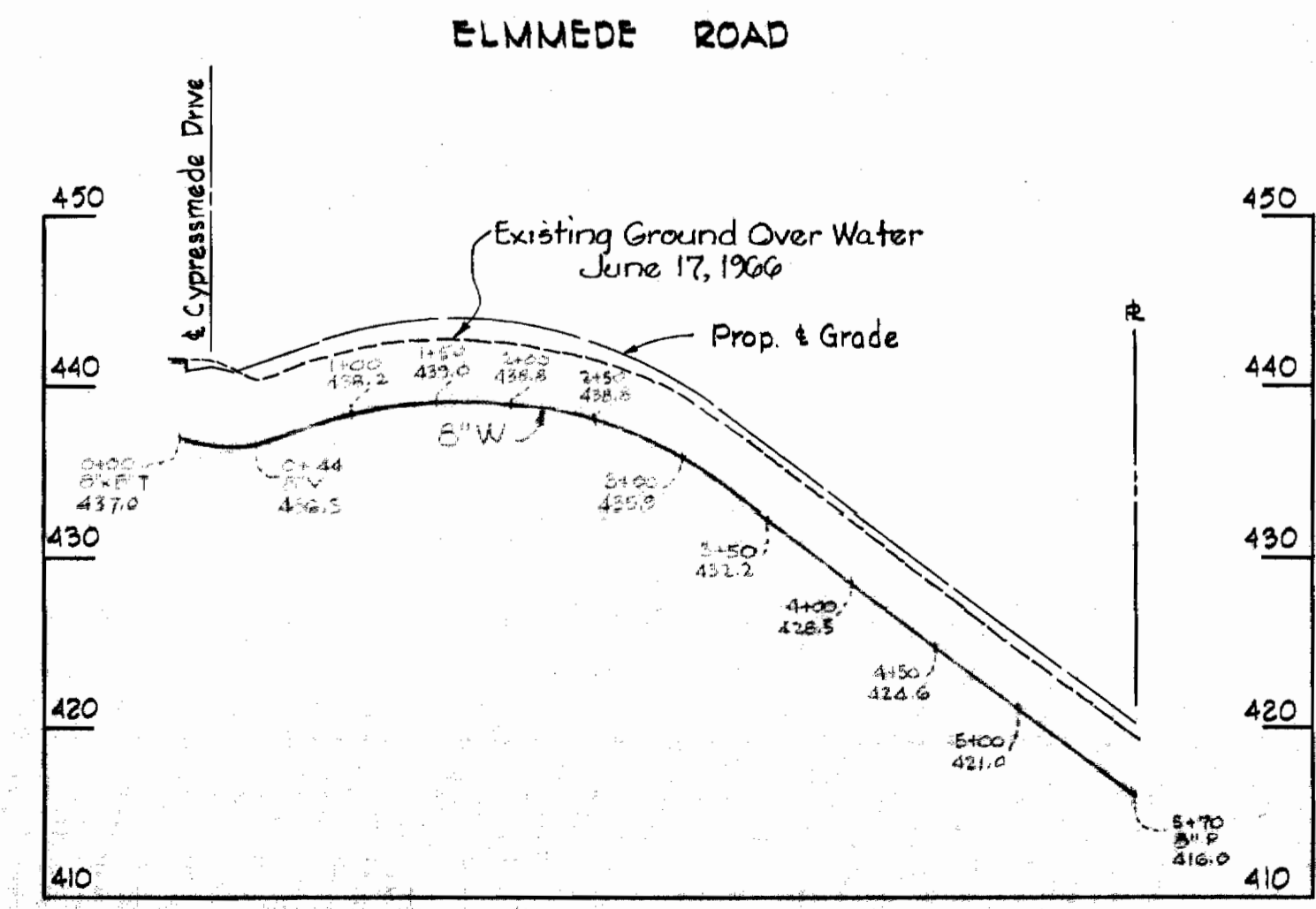
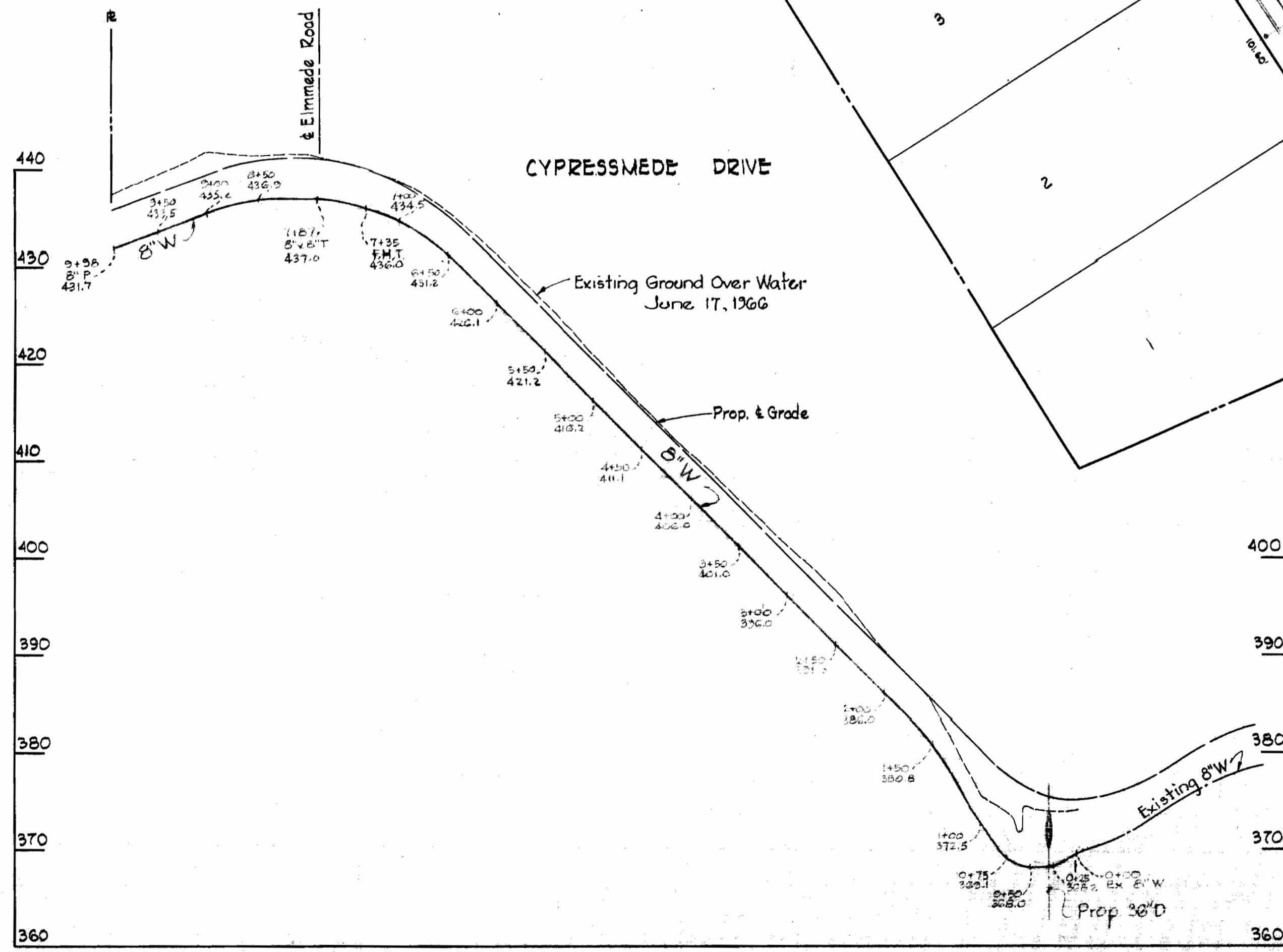
4250 S
66,750 W



PLAN
Scale: 1" = 50'

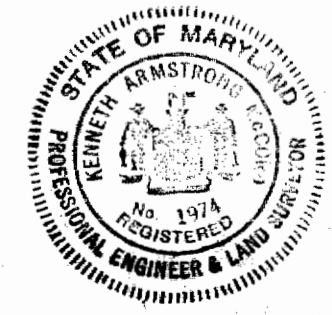
GENERAL NOTES

1. Approximate location of existing mains are shown. The Contractor shall take all necessary precautions to protect the existing mains and services and maintain uninterrupted supply. Any damage incurred shall be repaired immediately.
2. All pipe elevations shown are invert elevations.
3. The Contractor shall locate existing utilities a minimum of two weeks in advance of construction operations in vicinity of utilities.
4. For all standard details see Standards bound in Specifications.
5. All water mains to be C.I.P. Class 22 and have a minimum of 3 1/2' cover.
6. Block all fittings with concrete, see standard details bound in Specifications.
7. Bury line elevation on fire hydrant shall be set the same as edge of paving or as directed by the Engineer in the field.
8. Buttress fire hydrants with concrete; provide copper pipe at weep holes as required for positive drainage. For Buttress dimensions see standard detail W-8 Buttress for Caps.



PROFILE

Scale: Hor. 1" = 100'
Vert. 1" = 10'



Kenneth Armstrong

Contract No. 151-W

WHITMAN, REQUARDT & ASSOCIATES
ENGINEERS
1304 ST. PAUL ST.
BALTIMORE, MARYLAND

HOWARD COUNTY METROPOLITAN COMMISSION
DATE 6-16-66 *W. O. Libal*
CHIEF ENGINEER

CONTRACT NO. 151-W

PLAN AND PROFILE OF
WATER MAINS

ELLCOTT CITY SUB-DISTRICT

DRAWING NO. 1 OF 1

SCALE AS SHOWN

NS 151-W/1