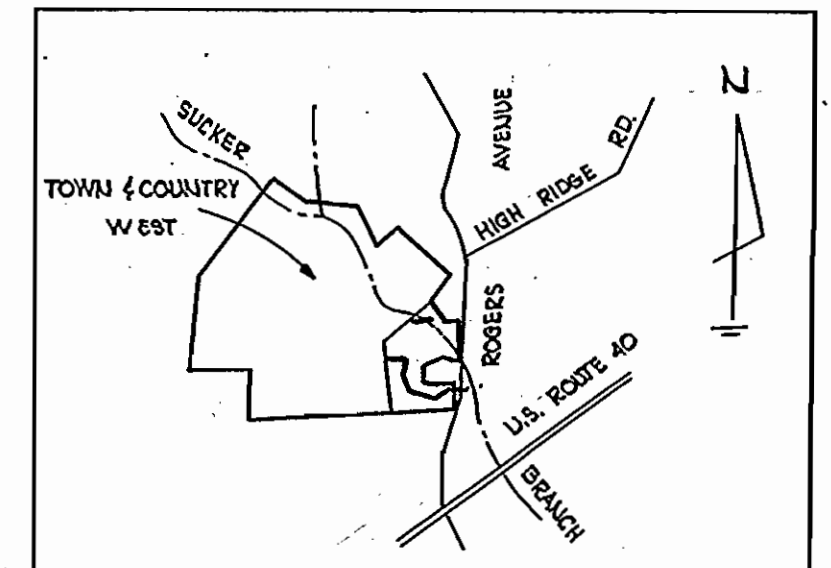
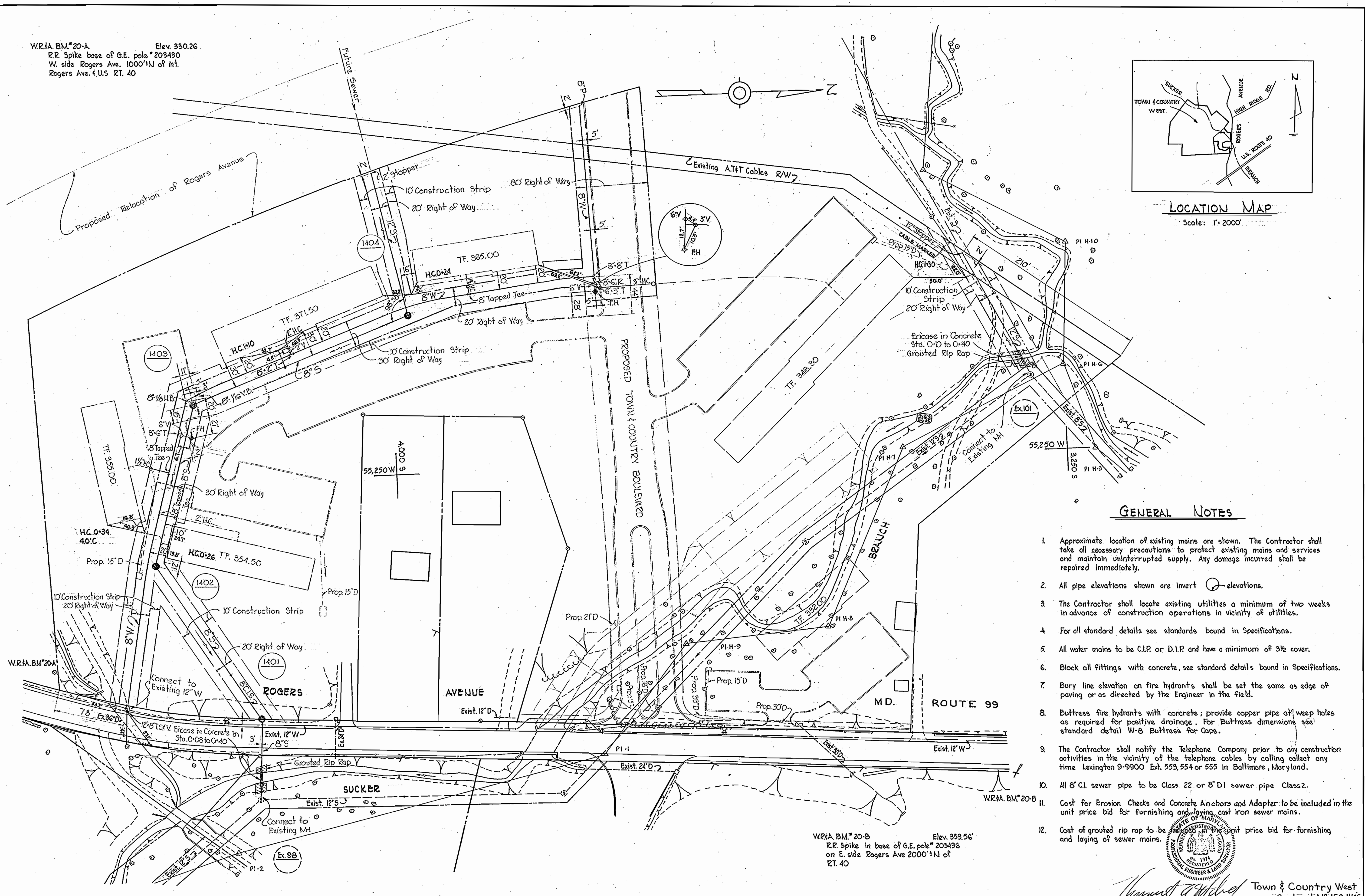


W.R. & A. BM\*20-A Elev. 350.26  
 R.R. Spike base of G.E. pole #203430  
 W. side Rogers Ave. 1000'±N of Int.  
 Rogers Ave. f. U.S. RT. 40



LOCATION MAP  
 Scale: 1" = 2000'



GENERAL NOTES

1. Approximate location of existing mains are shown. The Contractor shall take all necessary precautions to protect existing mains and services and maintain uninterrupted supply. Any damage incurred shall be repaired immediately.
2. All pipe elevations shown are invert elevations.
3. The Contractor shall locate existing utilities a minimum of two weeks in advance of construction operations in vicinity of utilities.
4. For all standard details see standards bound in Specifications.
5. All water mains to be C.I.P. or D.I.P. and have a minimum of 3/8" cover.
6. Block all fittings with concrete, see standard details bound in Specifications.
7. Bury line elevation on fire hydrants shall be set the same as edge of paving or as directed by the Engineer in the field.
8. Buttress fire hydrants with concrete; provide copper pipe at weep holes as required for positive drainage. For Buttress dimensions see standard detail W-6 Buttress for Caps.
9. The Contractor shall notify the Telephone Company prior to any construction activities in the vicinity of the telephone cables by calling collect any time Lexington 9-9900 Ext. 553, 554 or 555 in Baltimore, Maryland.
10. All 8" C.I. sewer pipe to be Class 22 or 8" D.I. sewer pipe Class 2.
11. Cost for Erosion Checks and Concrete Anchors and Adapter to be included in the unit price bid for furnishing and laying cast iron sewer mains.
12. Cost of grouted rip rap to be included in the unit price bid for furnishing and laying of sewer mains.

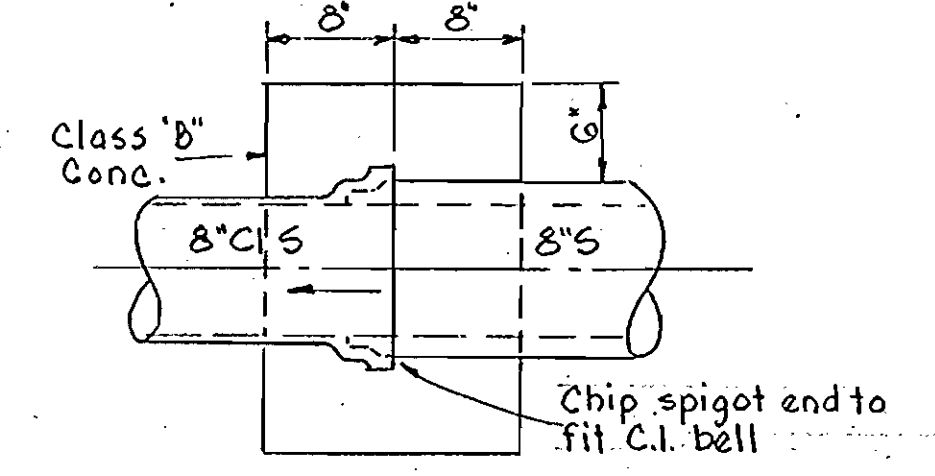
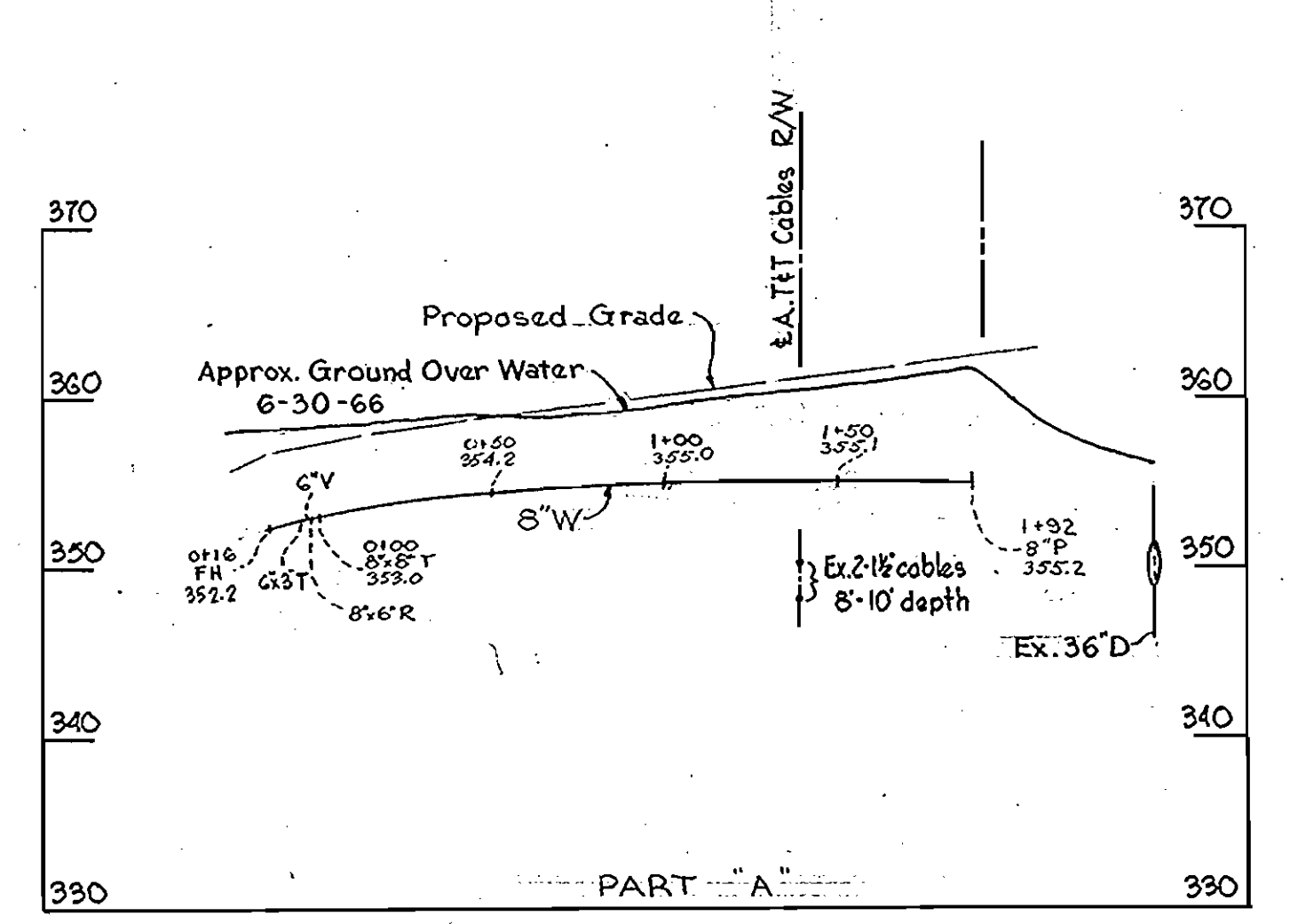
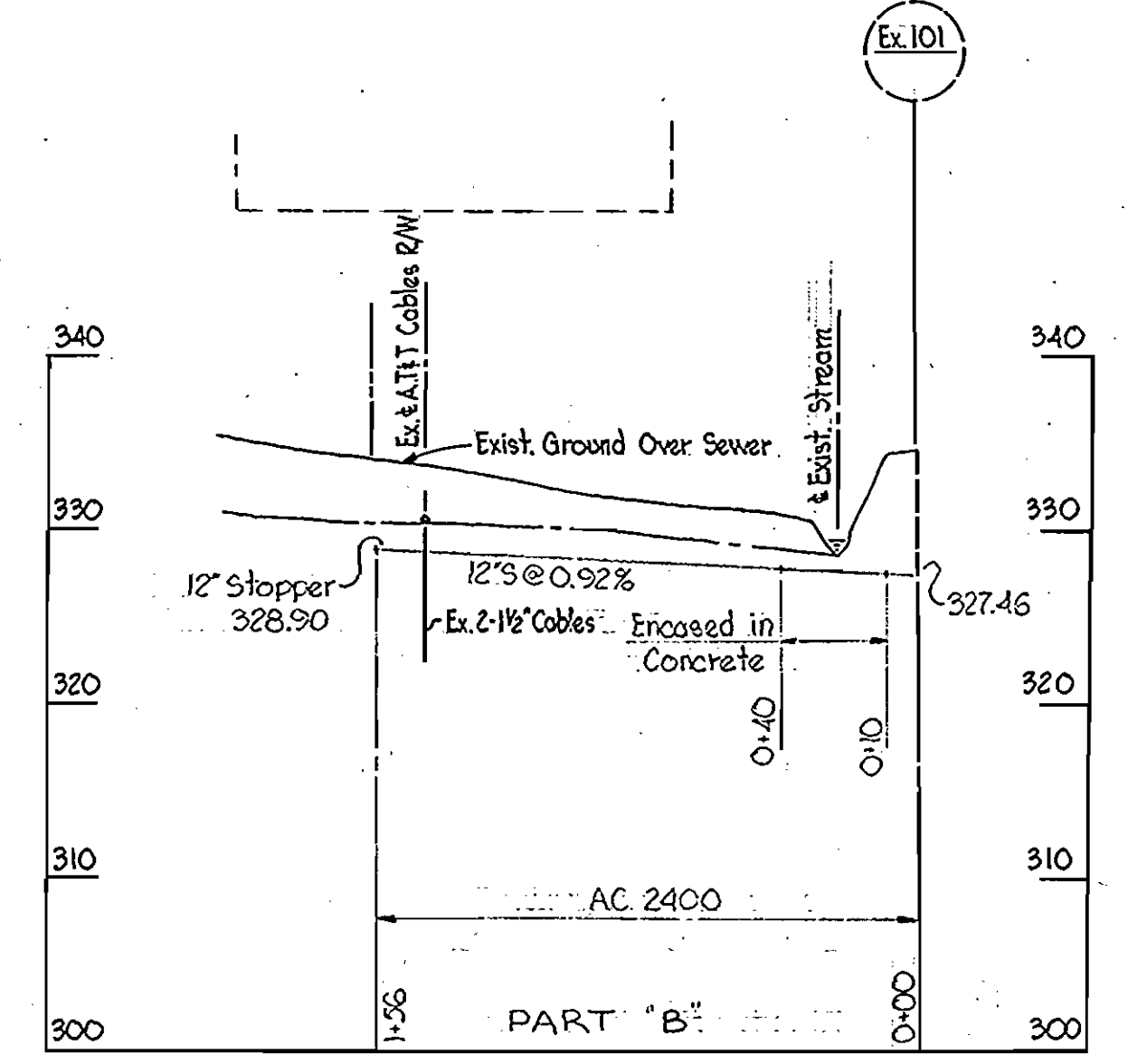
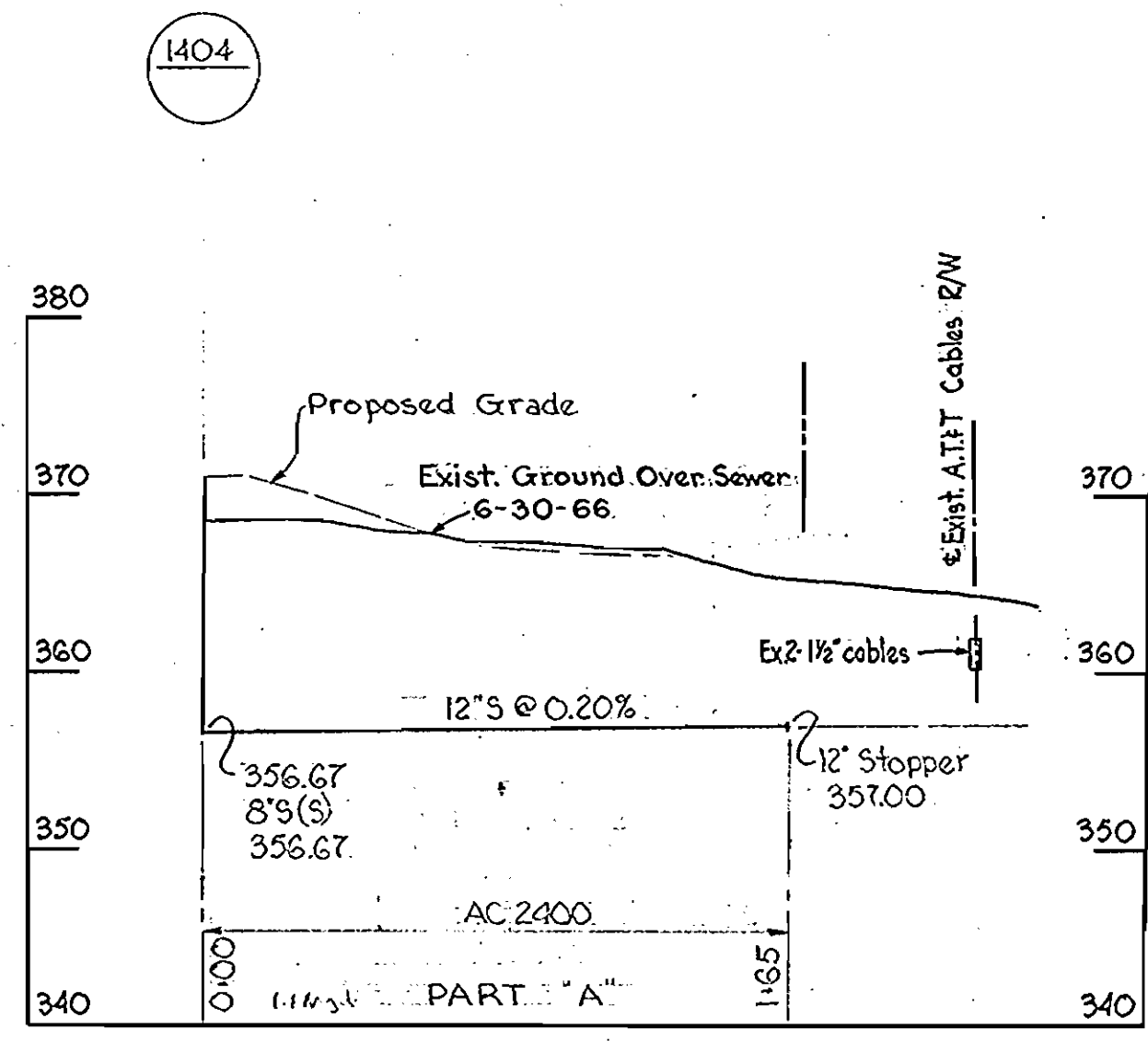
W.R. & A. BM\*20-B Elev. 353.56'  
 R.R. Spike in base of G.E. pole #203436  
 on E. side Rogers Ave 2000'±N of  
 RT. 40



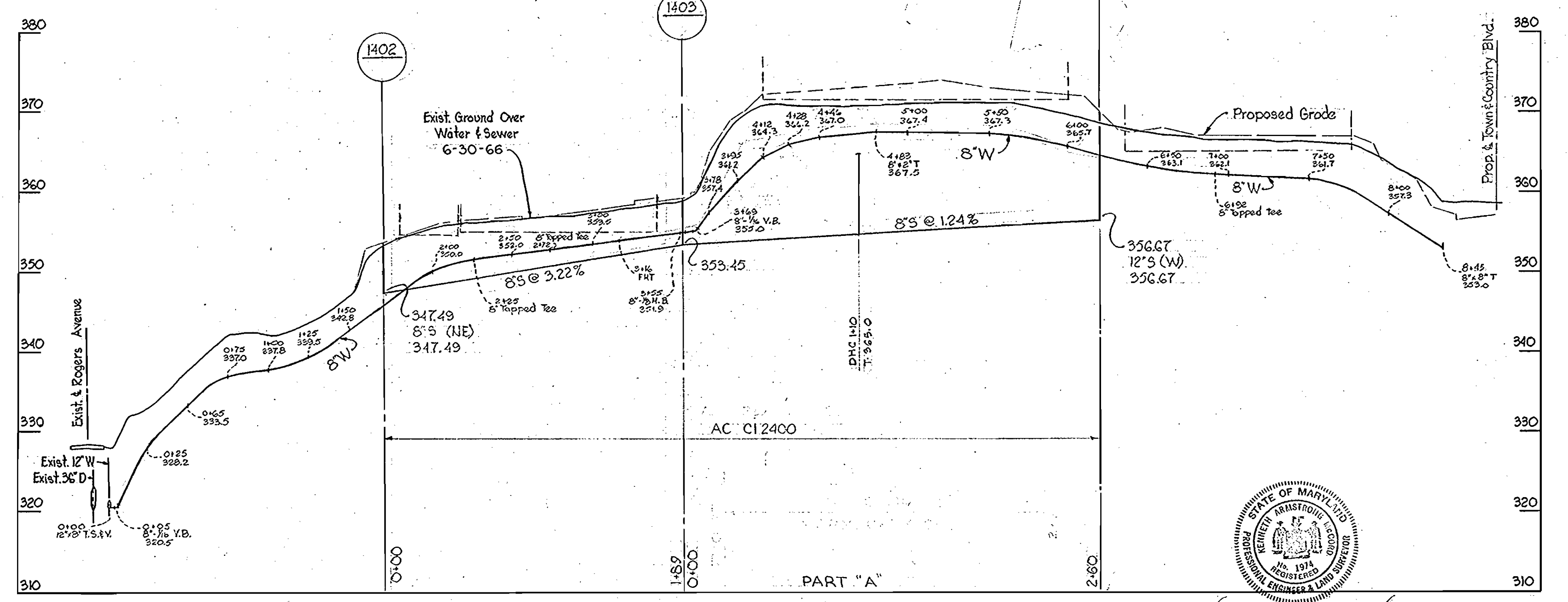
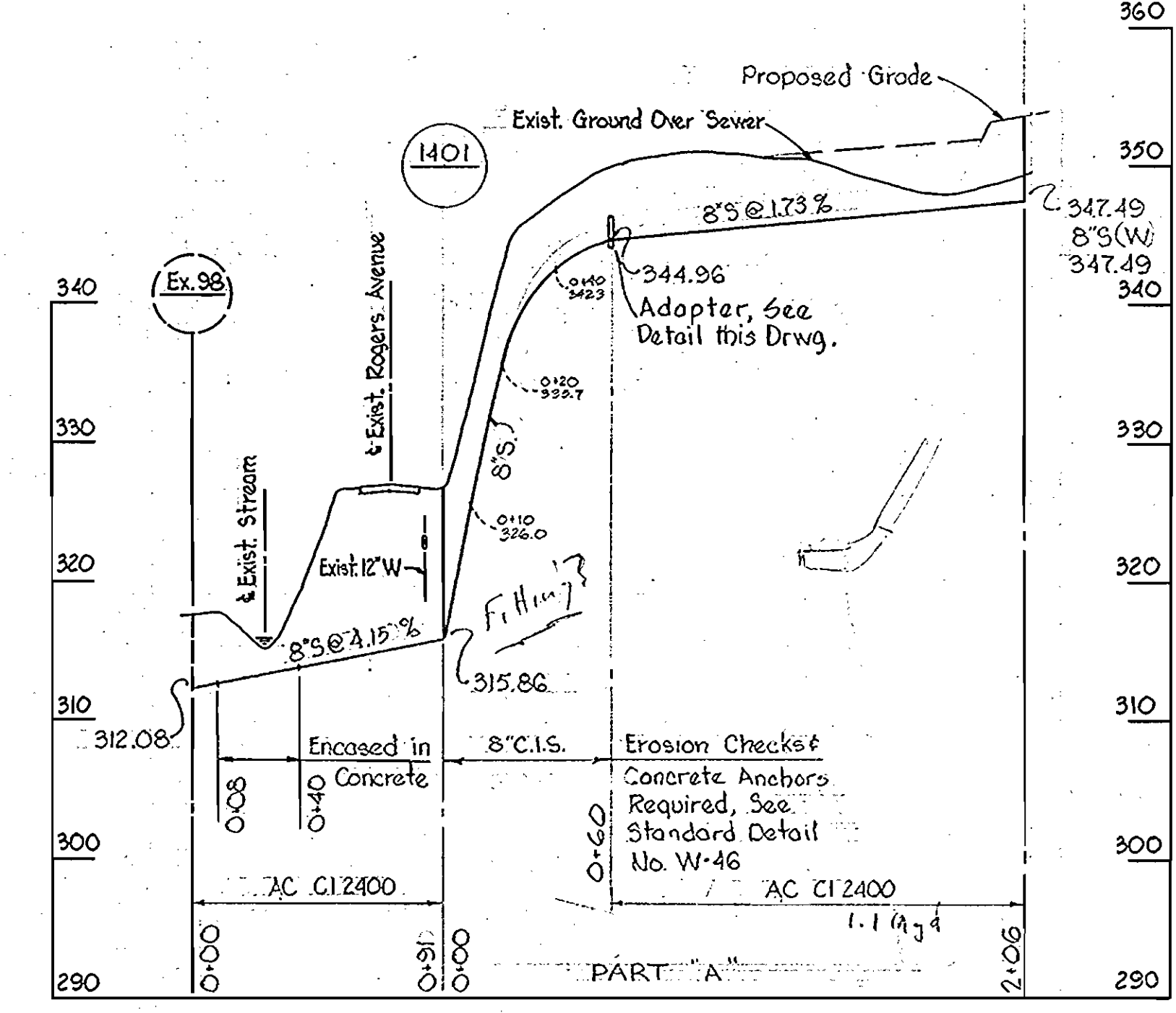
Town & Country West  
 Contract No. 150-W&S

WHITMAN, REQUARDT & ASSOCIATES ENGINEERS 1304 ST. PAUL ST. BALTIMORE, MARYLAND	HOWARD COUNTY METROPOLITAN COMMISSION DATE: 6-16-66 CHIEF ENGINEER	CONTRACT NO. 150-W&S	PLAN OF WATER & SEWER MAINS	ELLICOTT CITY SUB-DISTRICT	DRAWING NO. 1 OF 2 SCALE 1" = 50' AS BUILT 6 DEC 66
---	--	----------------------	--------------------------------	----------------------------	---

WS 150 W-S/1



CI TO CONCRETE OR V.C. PIPE ADAPTER  
Scale 1"=1'-0"



NOTE: All Water Line Pipe - Cast Iron

Howard Rogers  
Town & Country West  
Contract No. 150W&S

WHITMAN, REQUARDT & ASSOCIATES  
ENGINEERS  
1304 ST. PAUL ST.  
BALTIMORE, MARYLAND

HOWARD COUNTY METROPOLITAN COMMISSION  
DATE 6-16-66  
W. O. Elliott  
CHIEF ENGINEER

CONTRACT NO. 150-W&S

PROFILES OF  
WATER & SEWER MAINS

ELLICOTT CITY SUB-DISTRICT

DRAWING NO. 2 OF 2  
SCALE H-1"=50' V-1"=10'

AS BUILT 6 DEC. 66

WS 150 W&S/2