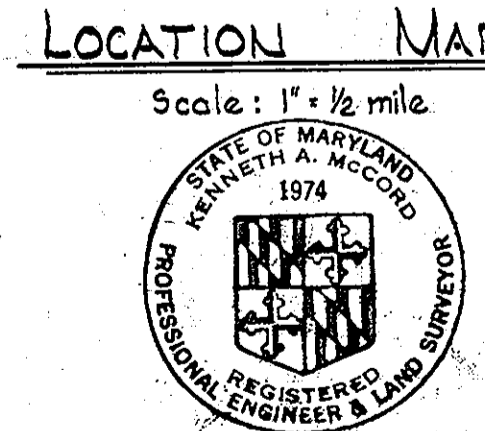
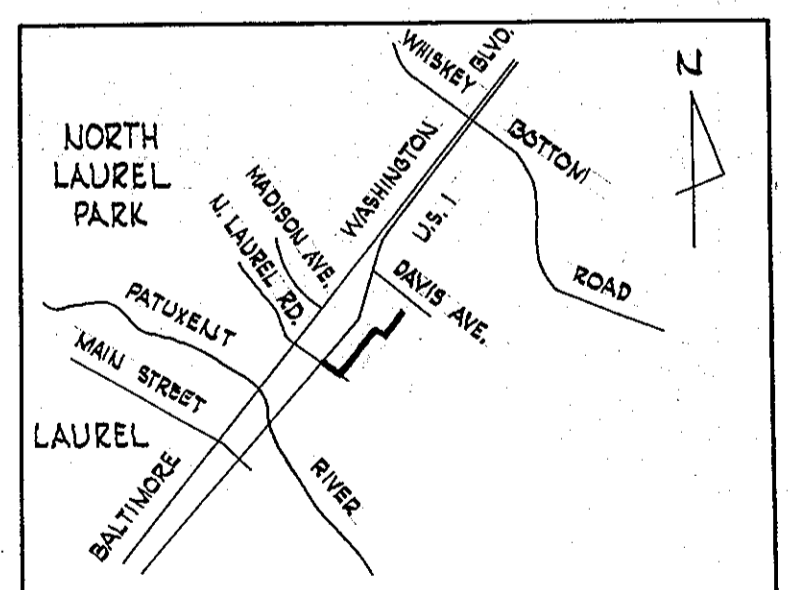
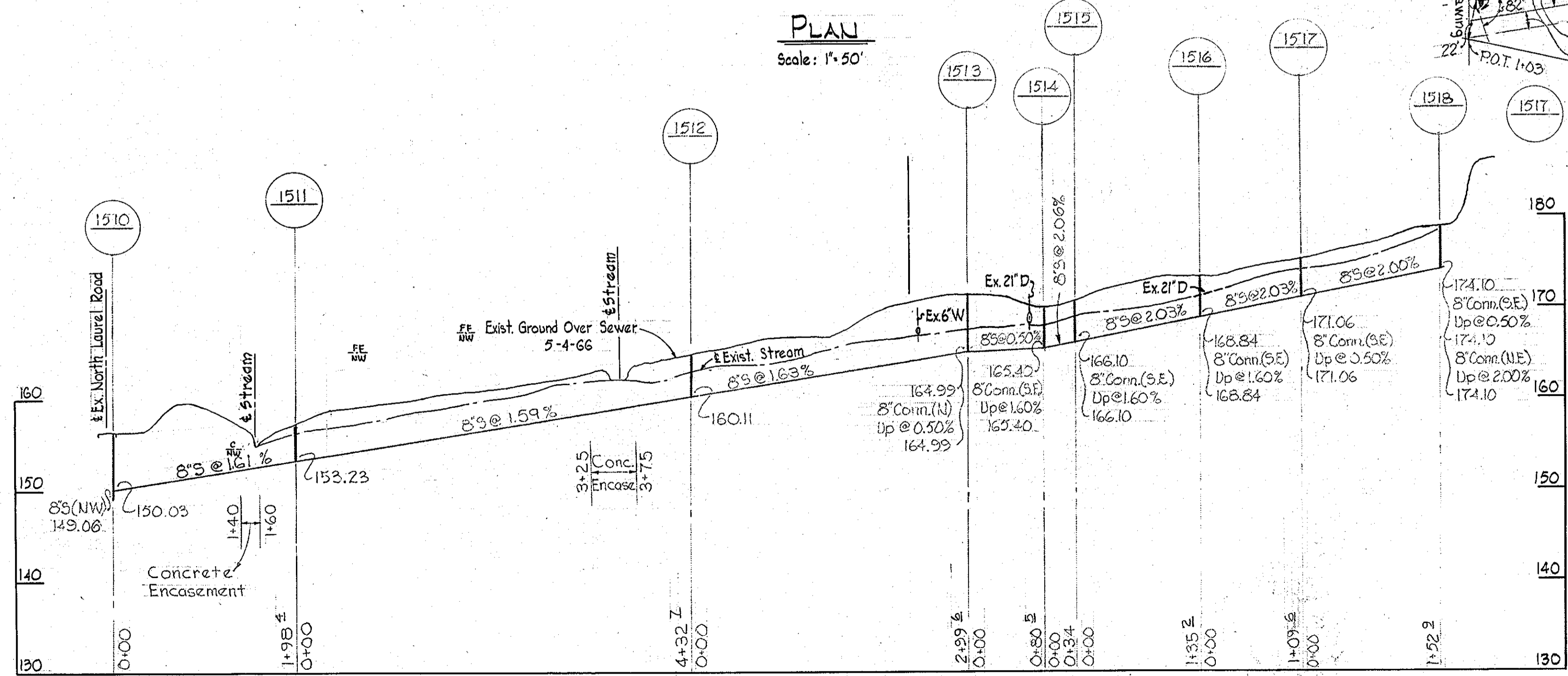
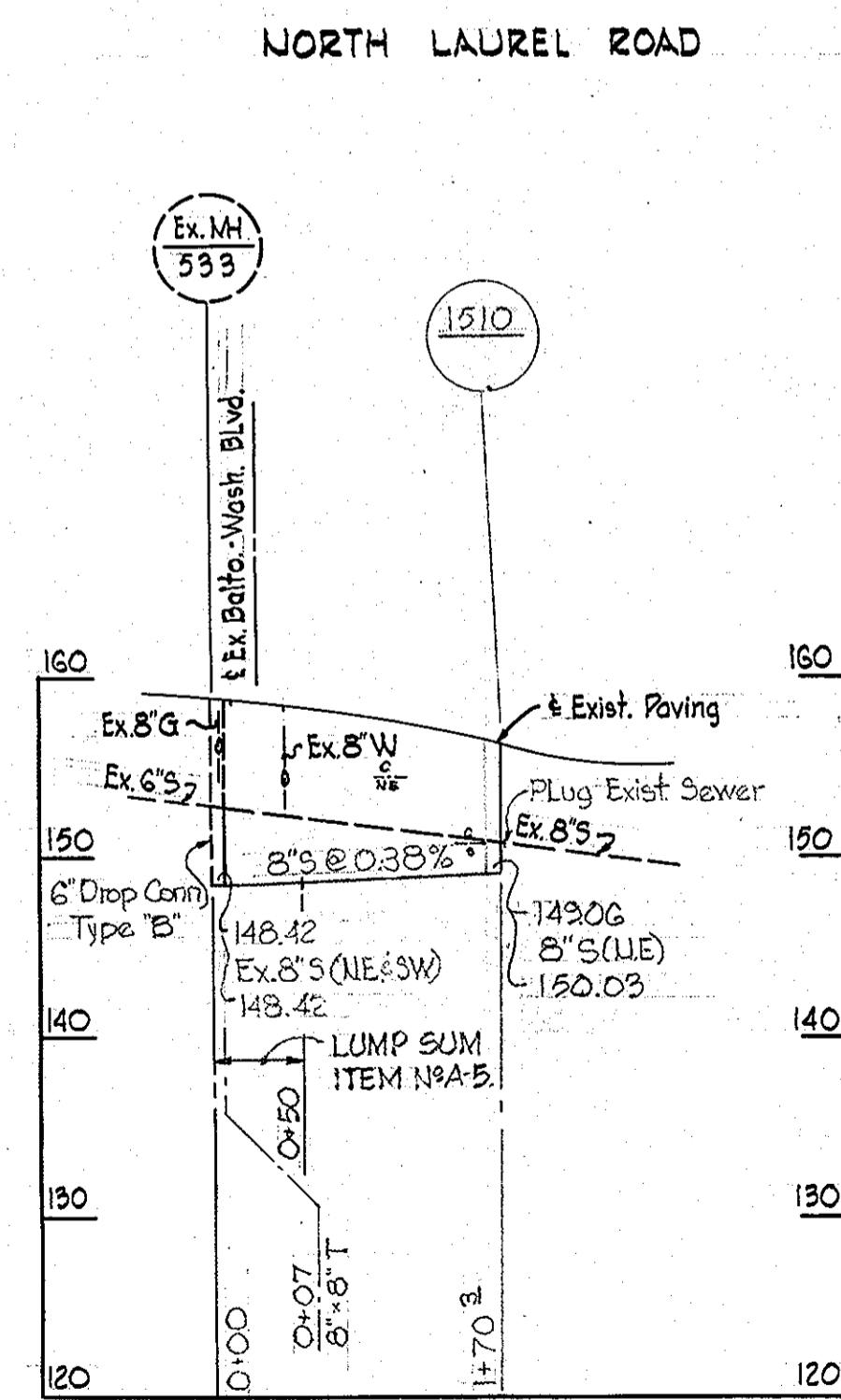
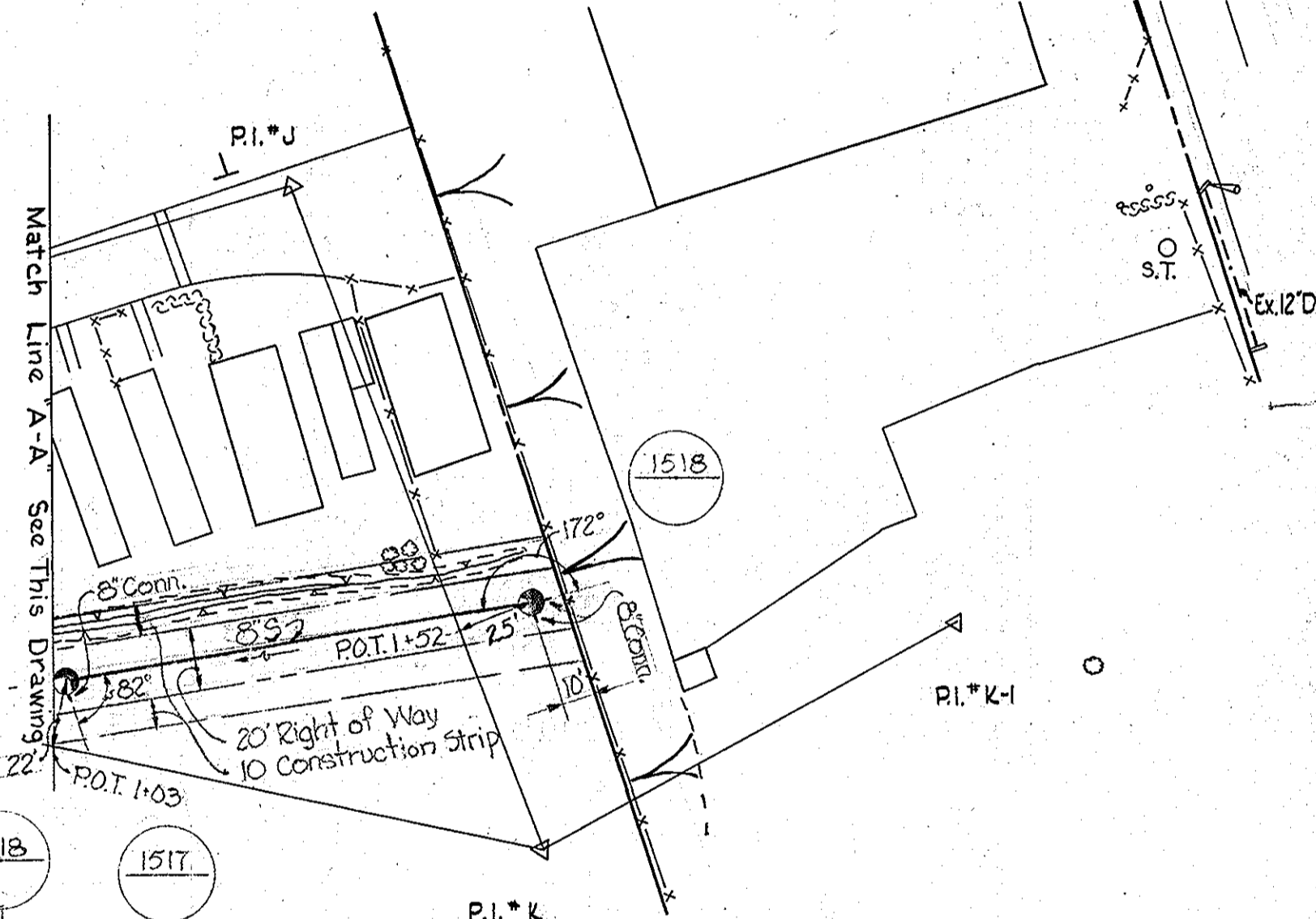


- ### GENERAL NOTES
1. Approximate location of existing mains are shown. The Contractor shall take all precautions to protect the existing mains and services and maintain uninterrupted supply. Any damage incurred shall be repaired immediately.
 2. All pipe elevations shown are invert elevations.
 3. The Contractor shall locate existing utilities a minimum of two weeks in advance of construction operations in vicinity of utilities.
 4. For all standard details see Standards bound in Specifications.
 5. Build all manholes to existing ground or paving unless otherwise noted.
 6. All sewers shall be V.C.P.X., C.S.P.X. or Asbestos Cement Class 2400 unless otherwise noted.
 7. Clear all poles by 2'-0" minimum or tunnel as required.
 8. The Contractor shall provide a joint in all sewer mains within 2'-0" of manhole walls.



Kenneth A. McCord

Contract No. 143-S

WHITMAN, REQUARDT & ASSOCIATES
ENGINEERS
1304 ST. PAUL ST.
BALTIMORE, MARYLAND

HOWARD COUNTY METROPOLITAN COMMISSION
DATE 10-27-66
W. O. Gilbert
CHIEF ENGINEER

CONTRACT NO. 143-S

PLAN AND PROFILE OF
SEWER MAINS

ELECTION DISTRICT
GUILFORD NO. 6

DRAWING NO. 1	SCALE AS SHOWN
OF 1	

WS 143-W/1