

**CONTRACT 142-W**  
**WATER MAIN EXTENSIONS**  
**HOWARD COUNTY METROPOLITAN COMMISSION**  
**ELLICOTT CITY, MARYLAND**



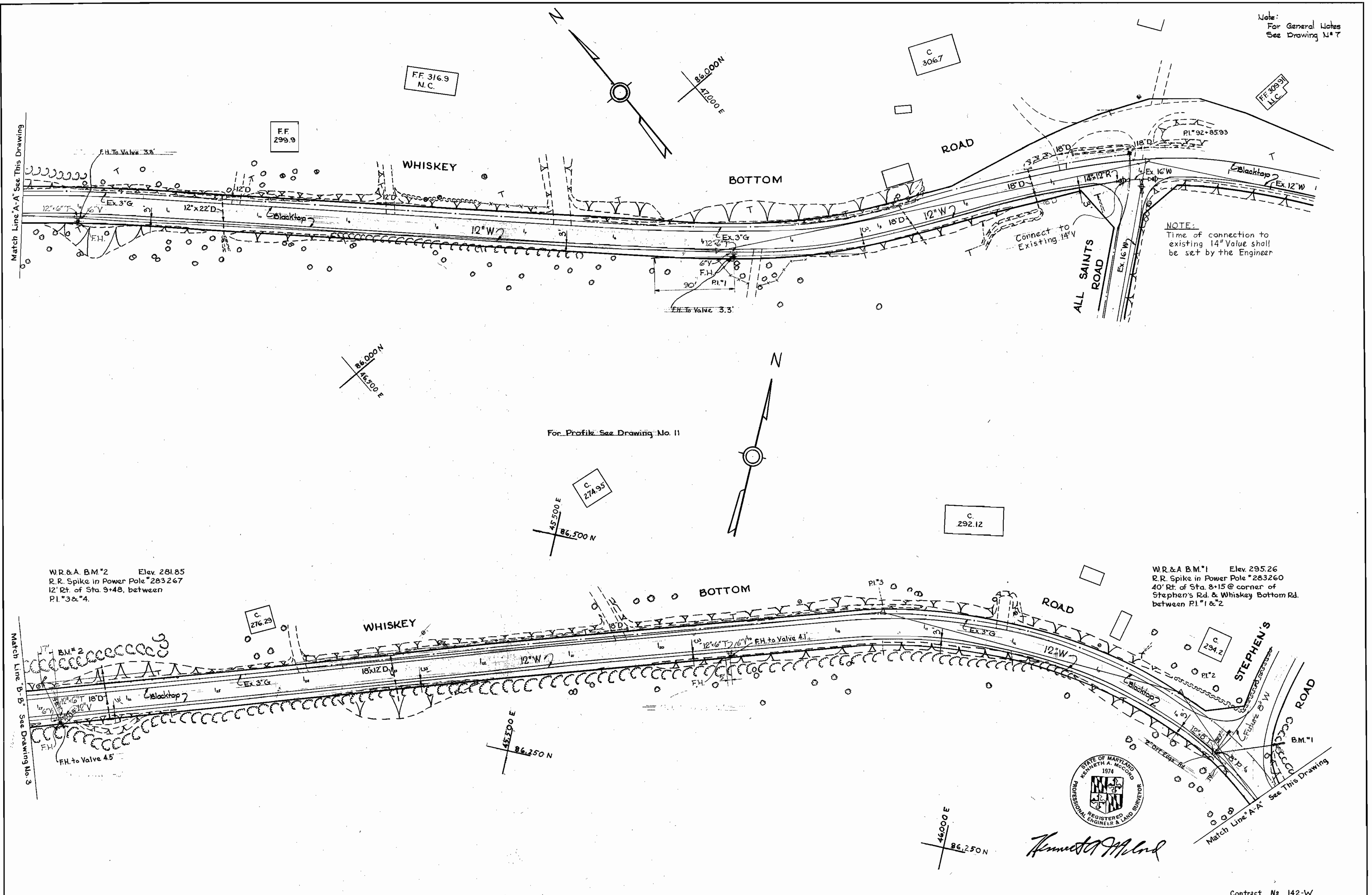
*Kenneth A. McCord*

Zone #1 H.G. Elev. 415'  
 Zone #2 H.G. Elev. 360'

WHITMAN, REQUARDT & ASSOCIATES ENGINEERS 1304 ST. PAUL ST. BALTIMORE, MARYLAND	HOWARD COUNTY METROPOLITAN COMMISSION <i>10-2-67</i> DATE <i>W. O. P. [Signature]</i> CHIEF ENGINEER	CONTRACT NO. <u>142-W</u>	LOCATION MAP OF WATER MAIN EXTENSIONS	ELECTION DISTRICT GUILFORD NO. 6	Contract No 142-W DRAWING NO. <u>1</u> OF <u>15</u> SCALE AS SHOWN
---	---	---------------------------	--	-------------------------------------	--

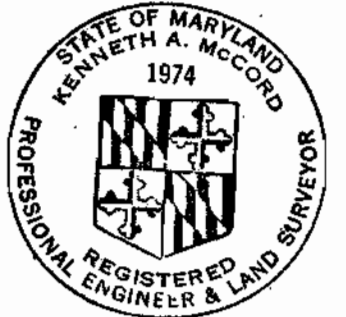
WS 142-W/1

Note:  
For General Notes  
See Drawing N#7



W.R. & A. B.M.#2 Elev. 281.85  
R.R. Spike in Power Pole #283267  
12' Rt. of Sta. 9+48, between  
P.I.#3 & #4.

W.R. & A. B.M.#1 Elev. 295.26  
R.R. Spike in Power Pole #283260  
40' Rt. of Sta. 8+15 @ corner of  
Stephen's Rd. & Whiskey Bottom Rd.  
between P.I.#1 & #2



*Kenneth A. McLeod*

WS 142-W/2

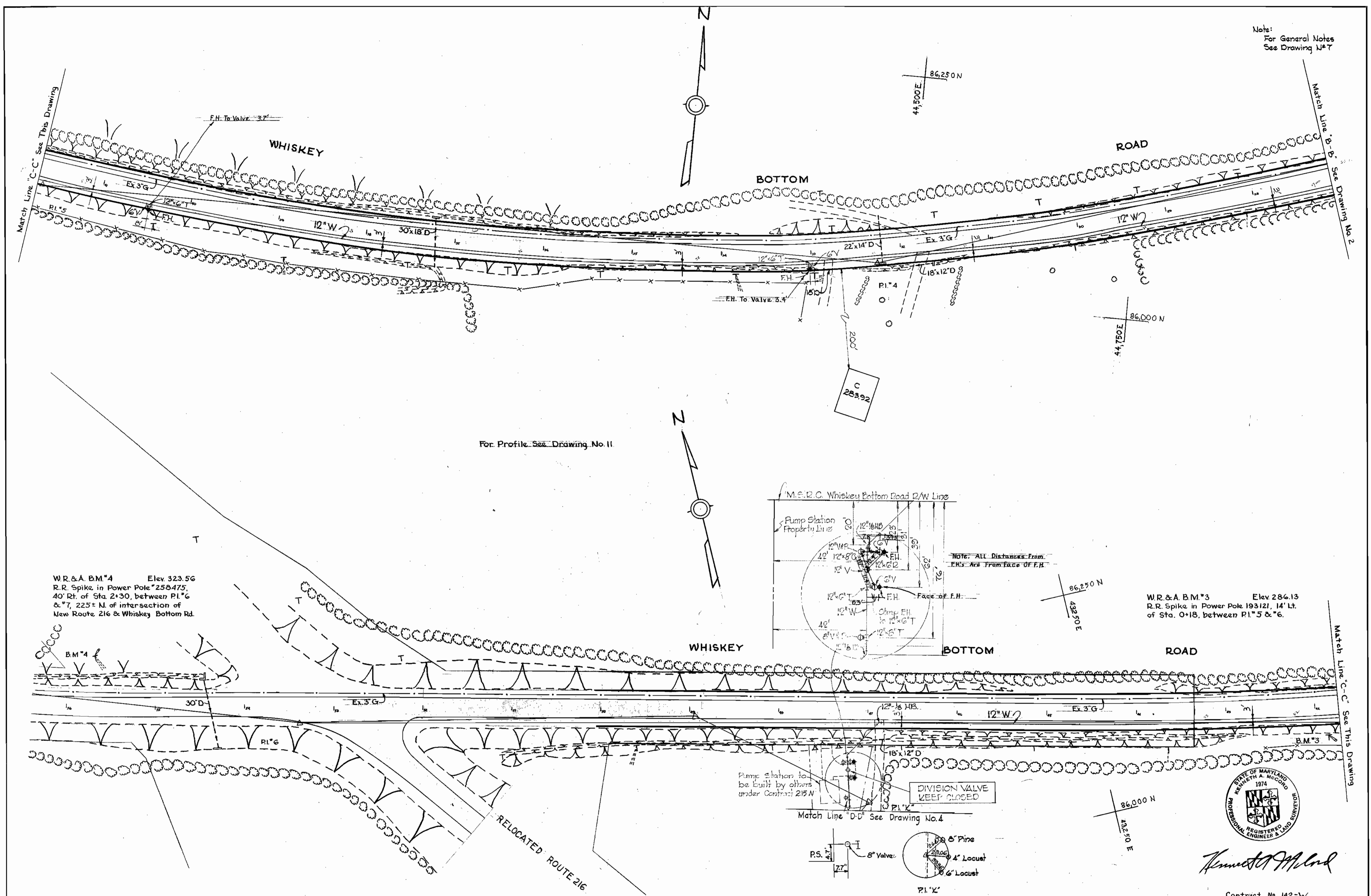
WHITMAN, REQUARDT & ASSOCIATES ENGINEERS 1304 ST. PAUL ST. BALTIMORE, MARYLAND	HOWARD COUNTY METROPOLITAN COMMISSION DATE: 10-2-67 <i>W.O. Whitman</i> CHIEF ENGINEER	CONTRACT NO. 142-W	PLAN OF WATER MAINS	ELECTION DISTRICT GUILFORD NO. 6	Contract No 142-W
					DRAWING NO. 2 OF 15

W. O. 5562-2

SEP 15, 1968 AS BUILT



Note:  
For General Notes  
See Drawing N#7



For Profile See Drawing No. 11

W.R. & A. B.M.\*4 Elev. 323.56  
R.R. Spike in Power Pole #258475,  
40' Rt. of Sta. 2+30, between P.I.\*6  
& \*7, 225' N. of intersection of  
New Route 216 & Whiskey Bottom Rd.

W.R. & A. B.M.\*3 Elev. 286.13  
R.R. Spike in Power Pole 193121, 14' Lt.  
of Sta. 0+18, between P.I.\*5 & \*6.



*Kenneth A. Accord*

Contract No. 142-W

WHITMAN, REQUARDT & ASSOCIATES ENGINEERS 1304 ST. PAUL ST. BALTIMORE, MARYLAND	HOWARD COUNTY METROPOLITAN COMMISSION 10-2-67 <i>W. O. Libal</i> DATE CHIEF ENGINEER	CONTRACT NO. 142-W	PLAN OF WATER MAINS	ELECTION DISTRICT GUILFORD NO. 6	DRAWING NO. 3 OF 15	SCALE 1" = 50' <small>44 NE 15-4 43 NE 15-2 44 NE 15-3 43 NE 15-1</small>
					SEPT. 5, 1968 AS BUILT	

W.O. 5562-2

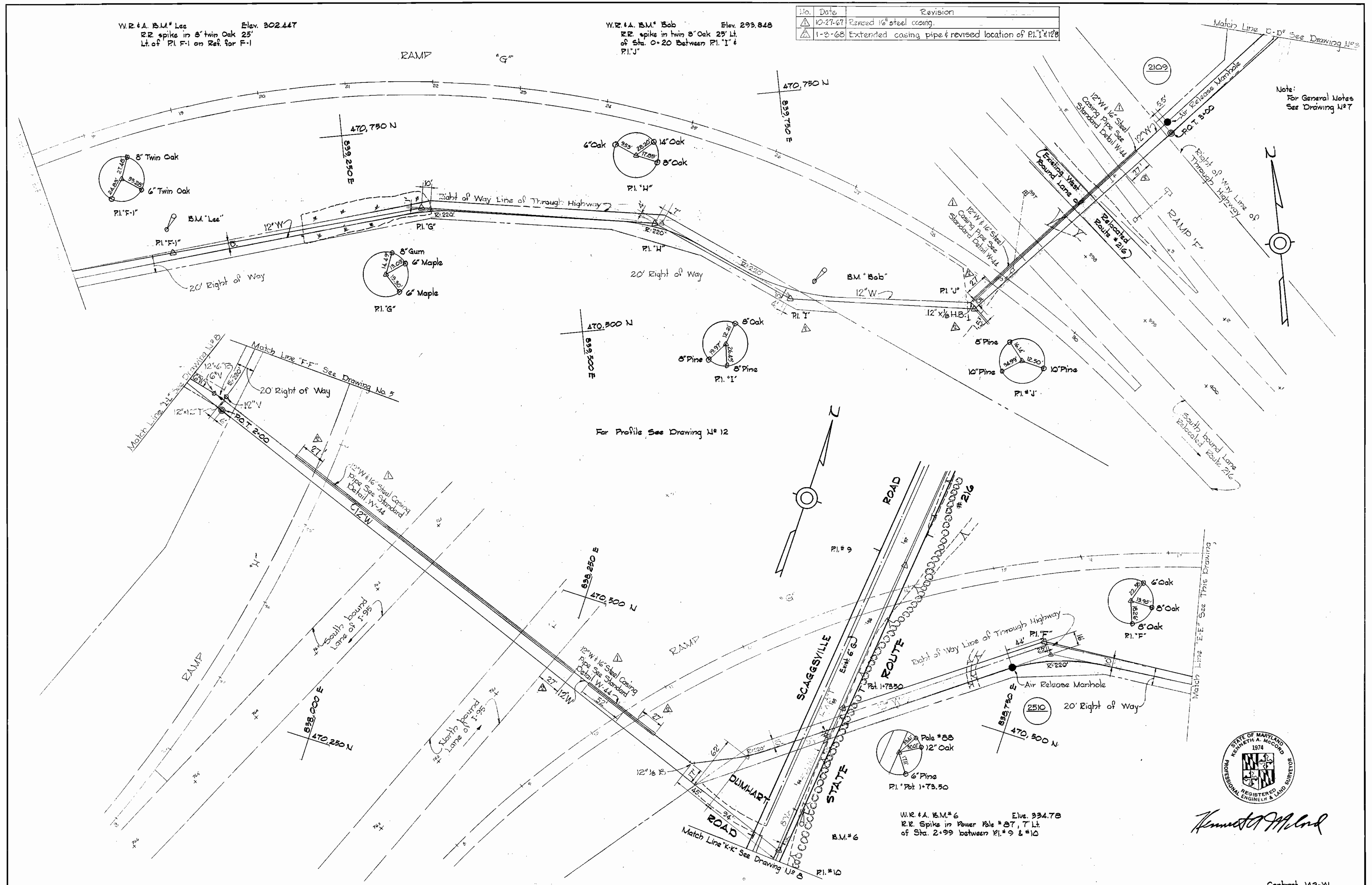
F.B. 3610

WS 142-W/3

W.R. & A. B.M.# Lee Elev. 302.447  
 R.E. spike in 8" twin Oak 25'  
 Lt. of Pl. F-1 on Ref. for F-1

W.R. & A. B.M.# Bob Elev. 299.848  
 R.E. spike in twin 8" Oak 25' Lt.  
 of Sta. 0+20 Between Pl. 'I' &  
 Pl. 'J'

No.	Date	Revision
10-27-67		Revised 16" steel casing.
1-2-68		Extended casing pipe & revised location of Pl. 'I' & 'J'



Note: For General Notes See Drawing No. 7



*Kenneth A. McLeod*

WS 142-W/4

WHITMAN, REQUARDT & ASSOCIATES ENGINEERS 1304 ST. PAUL ST. BALTIMORE, MARYLAND	HOWARD COUNTY METROPOLITAN COMMISSION DATE 10-2-67 <i>W. O. Elliott</i> CHIEF ENGINEER	CONTRACT NO. 142-W	PLAN OF WATER MAINS	ELECTION DISTRICT GUILFORD NO. 6	Contract 142-W
					DRAWING NO. 4 OF 15

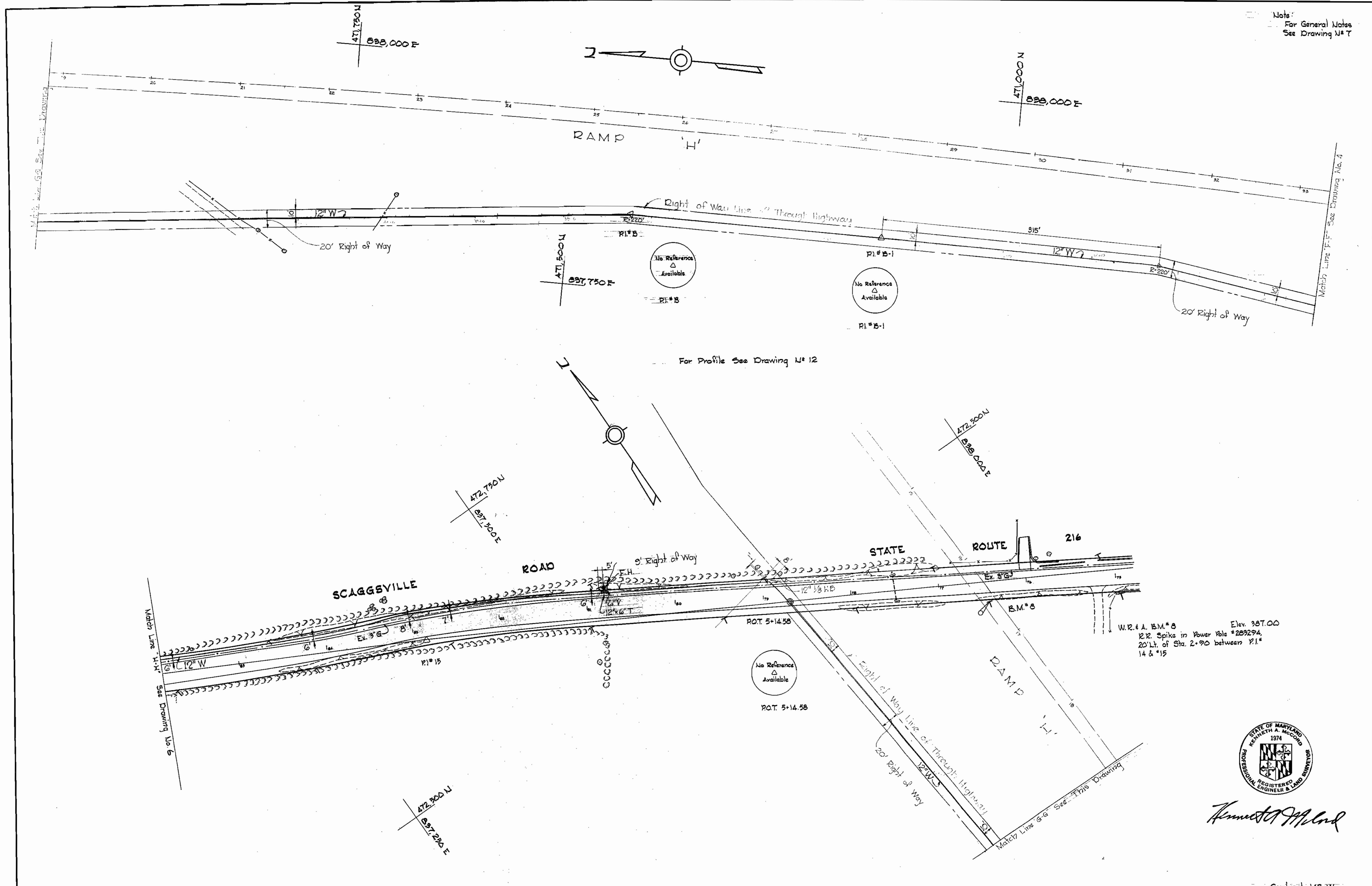
W. O. 5962-2

SEPT. 5, 1968 AS BUILT

F.B. # 3925



Note:  
For General Notes  
See Drawing No. 7



*Kenneth A. McCord*

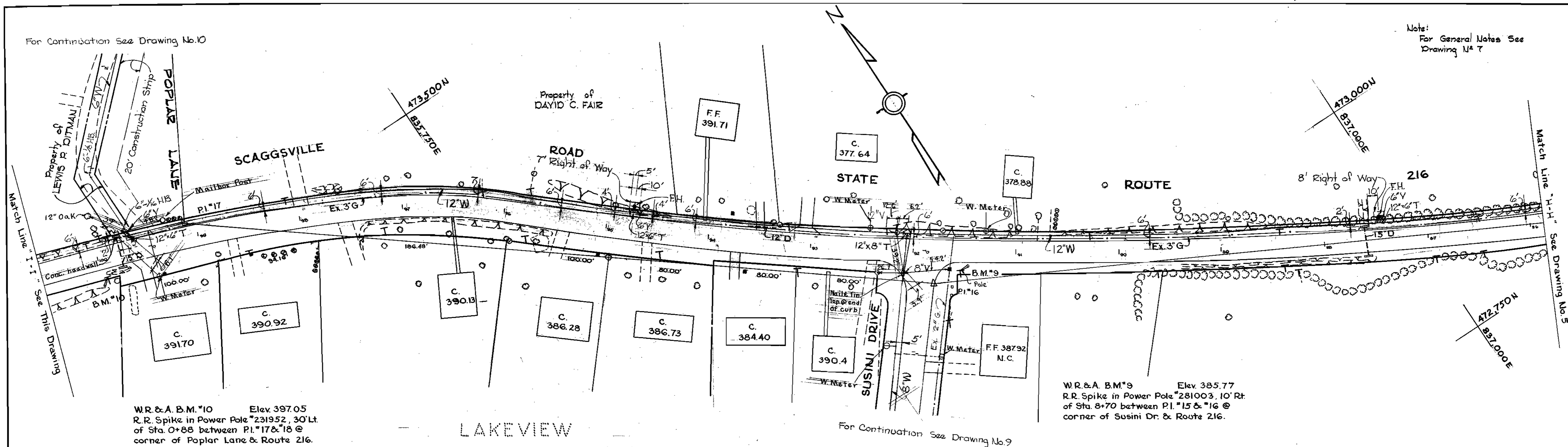
WS 142-W/5

WHITMAN, REQUARDT & ASSOCIATES ENGINEERS 1304 ST. PAUL ST. BALTIMORE, MARYLAND	HOWARD COUNTY METROPOLITAN COMMISSION DATE: 20-2-67 <i>W.O. Libek</i> CHIEF ENGINEER	CONTRACT NO. 142-W	PLAN OF WATER MAINS	ELECTION DISTRICT GUILFORD NO. 6	DRAWING NO. 5	SCALE 1" = 50'
					OF 15	15, SEPT. 1968 AS B.U.M. F.S. # 361, 3935

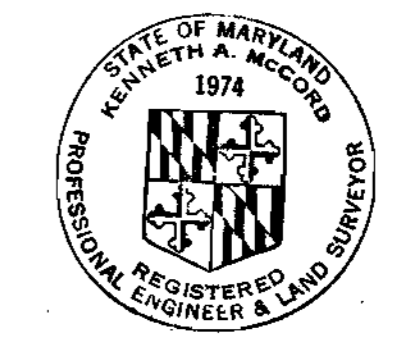
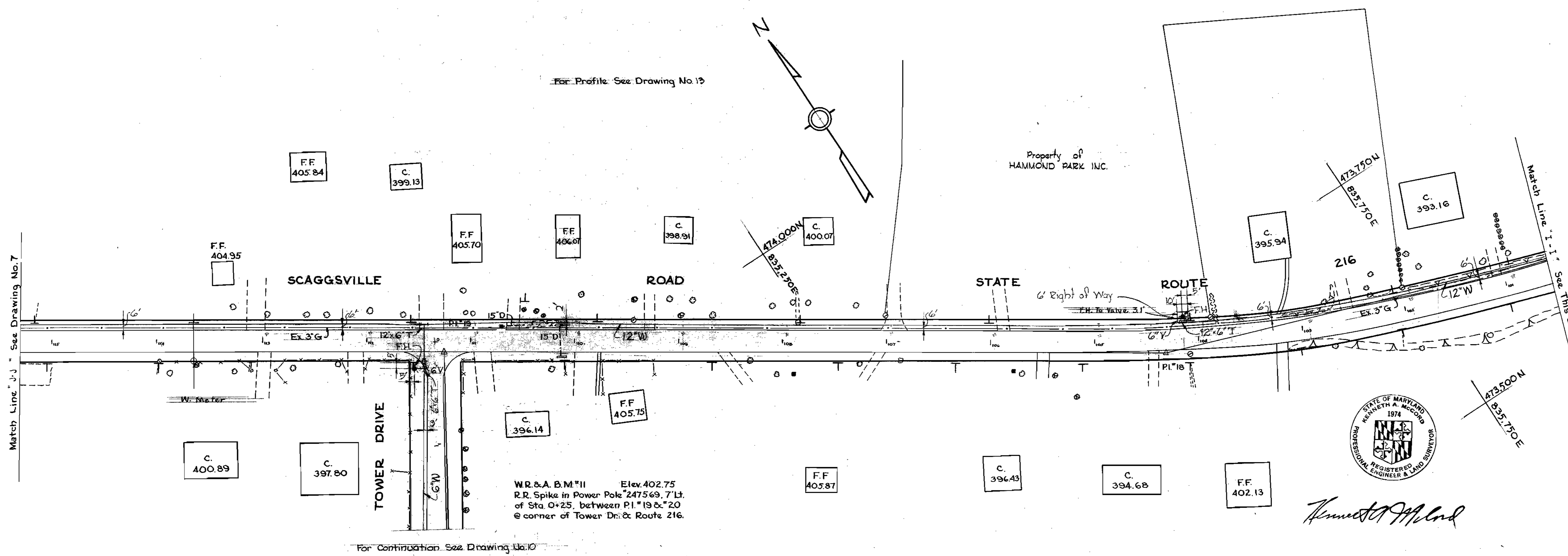
W. O. 5562-2

For Continuation See Drawing No. 10

Notes:  
For General Notes See  
Drawing No. 7



For Profile See Drawing No. 13



*Kenneth A. McLeod*

WHITMAN, REQUARDT & ASSOCIATES ENGINEERS 1304 ST. PAUL ST. BALTIMORE, MARYLAND	HOWARD COUNTY METROPOLITAN COMMISSION 10-2-67 <i>W.O. Libeck</i> <small>DATE CHIEF ENGINEER</small>	CONTRACT NO. 142-W	PLAN OF WATER MAINS	ELECTION DISTRICT GUILFORD NO. 6	Contract No. 142-W DRAWING NO. 6 OF 15 SCALE 1" = 50' <small>474-477 474-478 472-478 472-479 473-478 473-479</small>
---	---	--------------------	------------------------	-------------------------------------	---

W. O. 5562-2

SEPT. 15, 1968 AS BUILT

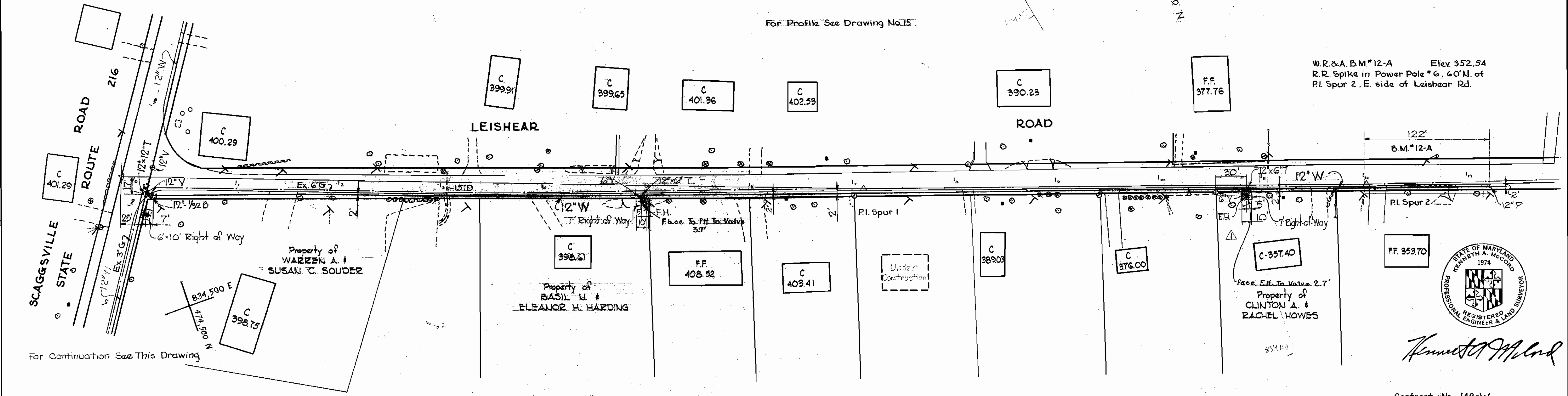
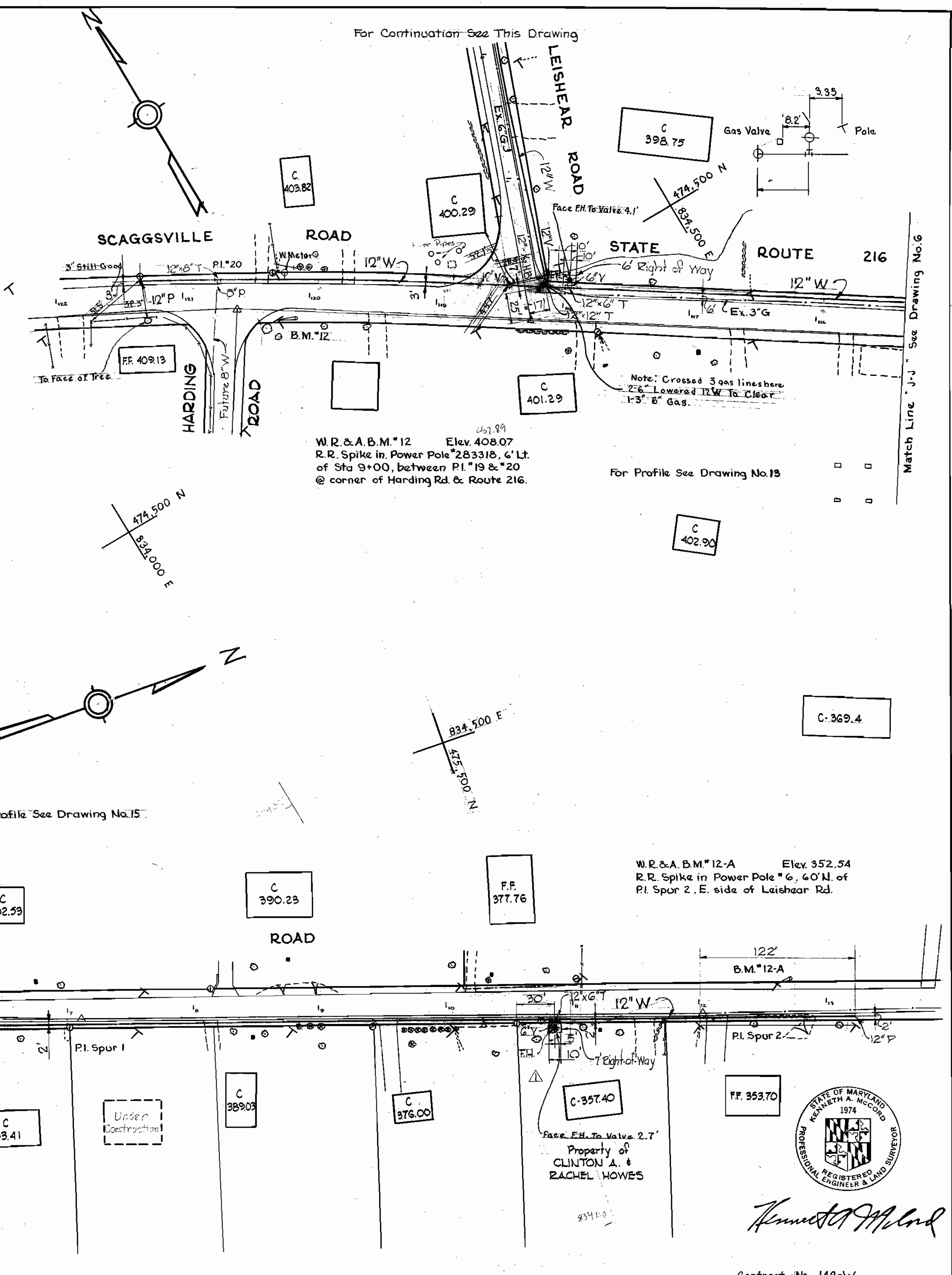
WS 142-W/6



No.	Date	Revision
1	11-16-67	Fire Hydrant relocated to opposite of Leishear Rd sta. 12+85

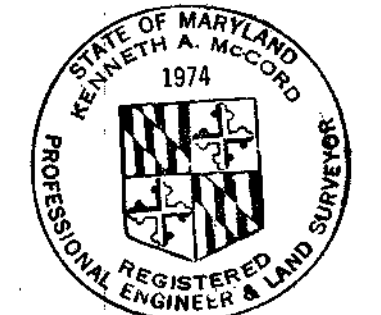
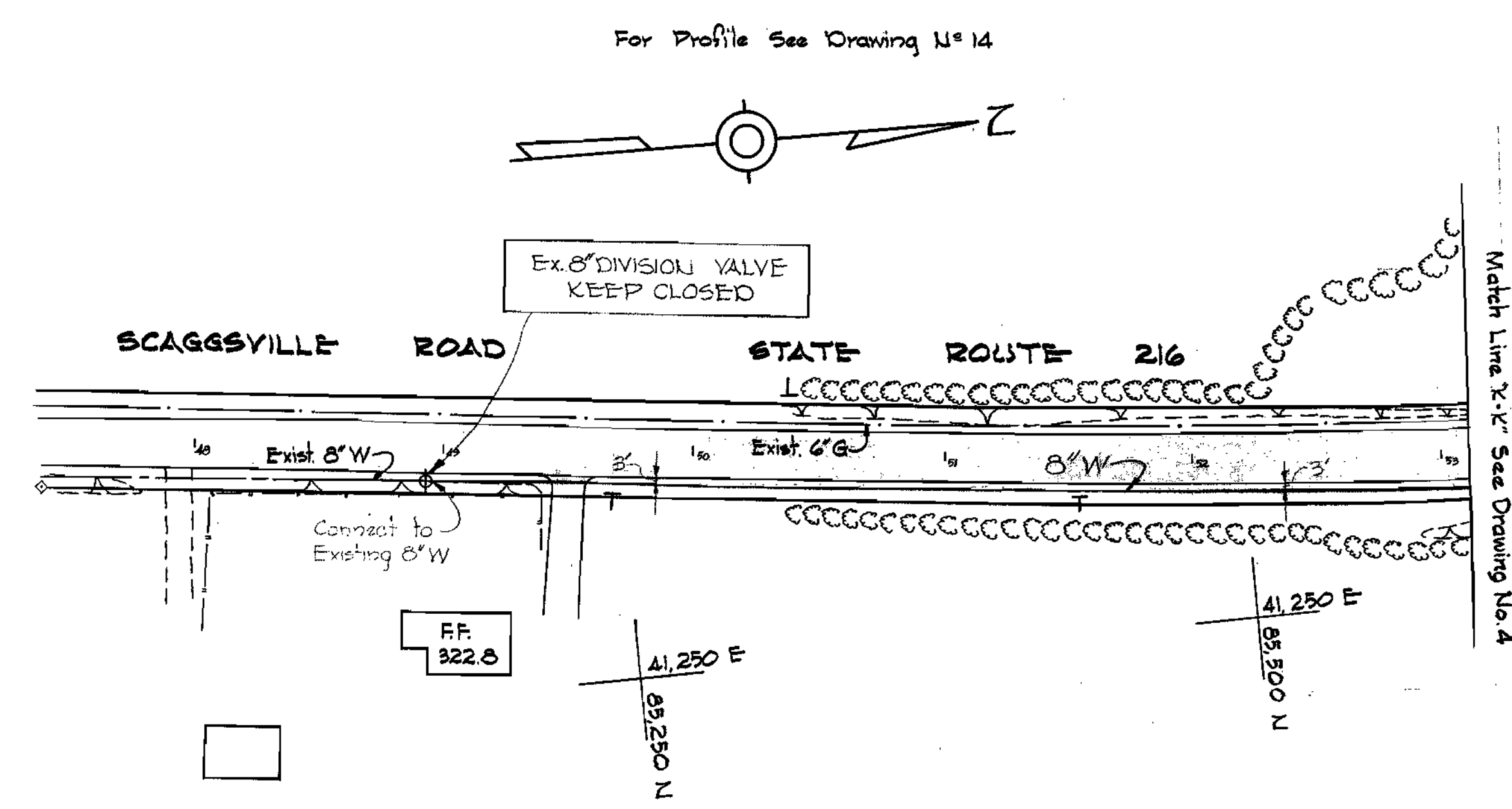
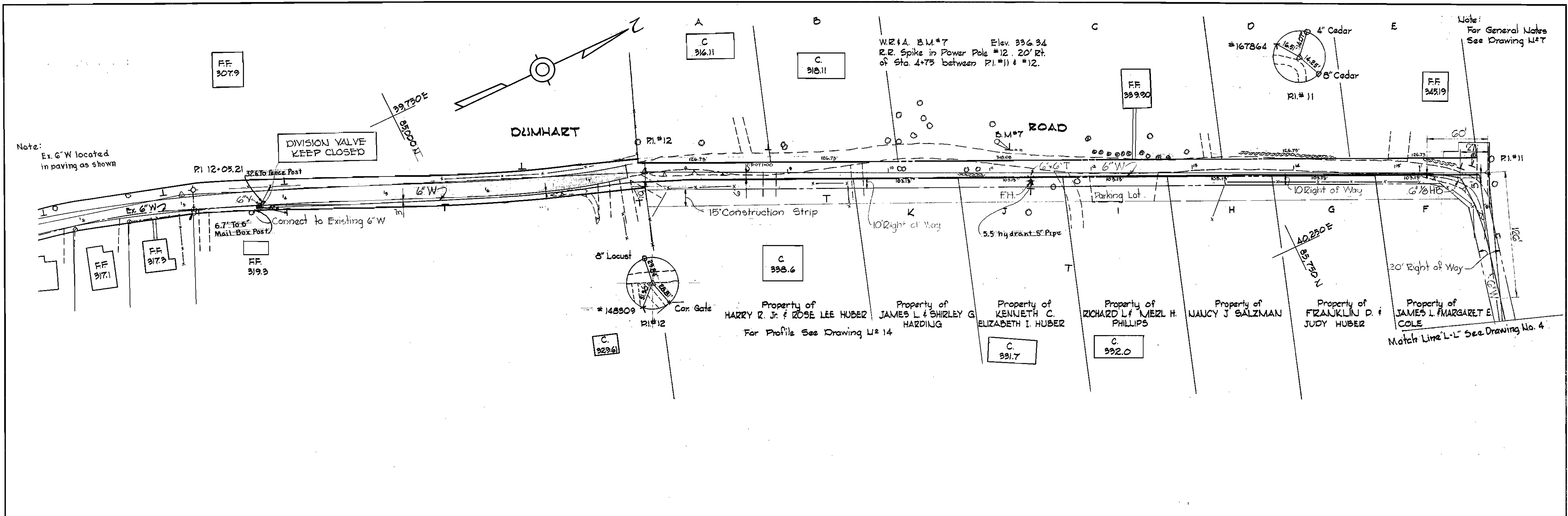
**GENERAL NOTES**

1. Approximate locations of existing mains are shown. The Contractor shall take all necessary precautions to protect existing mains and services and maintain uninterrupted supply. Any damage incurred shall be repaired immediately.
2. All pipe elevations shown are invert elevations.
3. The Contractor shall test pit existing utilities, which will be encountered during construction, a minimum of two weeks in advance of operations.
4. For all standard details see standards bound in Specifications.
5. All water mains to be C.I.P. or D.I.P. and have a minimum of 3 1/2' cover.
6. Block all fittings with concrete see standard details bound in Specifications.
7. Bury line elevations on fire hydrants shall be set the same as edge of paving, top of curb, or as directed by the Engineer in the field.
8. All Fire Hydrants shall be buttressed with concrete in accordance with Standard Detail W-4.
9. Clear all utilities by a minimum of 6'. Clear all poles by 2'-0" minimum or as tunnel as required.
10. Profile stationing shall be adjusted where necessary to conform to plan dimensions.
11. Payment for strapping fire hydrants shall be made under the unit prices bid for furnishing and laying water mains.



WHITMAN, REQUARDT & ASSOCIATES ENGINEERS 1304 ST. PAUL ST. BALTIMORE, MARYLAND	HOWARD COUNTY METROPOLITAN COMMISSION 10-2-67 DATE	CONTRACT NO. 142-W	PLAN OF WATER MAINS	ELECTION DISTRICT GUILFORD NO. 6	CONTRACT No 142-W DRAWING NO. 7 OF 15 SCALE 1"=50'
---	--	--------------------	------------------------	-------------------------------------	---

WS 142-W/7



*Kenneth A. Meador*

Contract 142-W

WHITMAN, REQUARDT & ASSOCIATES ENGINEERS 1304 ST. PAUL ST. BALTIMORE, MARYLAND	HOWARD COUNTY METROPOLITAN COMMISSION DATE <u>10-2-67</u> <i>W O Meador</i> CHIEF ENGINEER	CONTRACT NO. <u>142-W</u>	PLAN OF WATER MAINS	ELECTION DISTRICT GUILFORD NO. 6	DRAWING NO. <u>8</u> OF <u>15</u> SCALE 1"=50' <small>43 1/2" x 11"</small> <small>45 1/2" x 11"</small> <small>47 1/2" x 11"</small>
---	--	---------------------------	------------------------	-------------------------------------	--

NS 142-W/8



Note:  
For General Notes  
See Drawing No. 7

W.R. & A. B.M. #9-A Elev. 390.97  
R.R. Spike in Power Pole #341744  
15' Rt. of Sta. 4+40 between P.I. #16-B  
& #16-C

For Profile See Drawing No. 14

W.R. & A. B.M. #9 Elev. 385.77  
R.R. Spike in Power Pole #281003  
10' Rt. of Sta. 8+70 between P.I. #15  
& #16 @ corner of Susini Dr. &  
Route 216.

For Continuation See Drawing No. 6

Note:  
End of 8" W 4"  
to top of pipe.

Note:  
Moved 8" W 2" to  
avoid underdrains



*Kenneth A. McCord*

WHITMAN, REQUARDT & ASSOCIATES  
ENGINEERS  
1304 ST. PAUL ST.  
BALTIMORE, MARYLAND

HOWARD COUNTY METROPOLITAN COMMISSION  
10-2-67 *W O Gilbert*  
DATE CHIEF ENGINEER

CONTRACT NO. 142-W

PLAN OF  
WATER MAINS

ELECTION DISTRICT  
GUILFORD NO. 6

Contract No. 142-W  
DRAWING NO. 9  
OF 15  
SCALE 1" = 50'

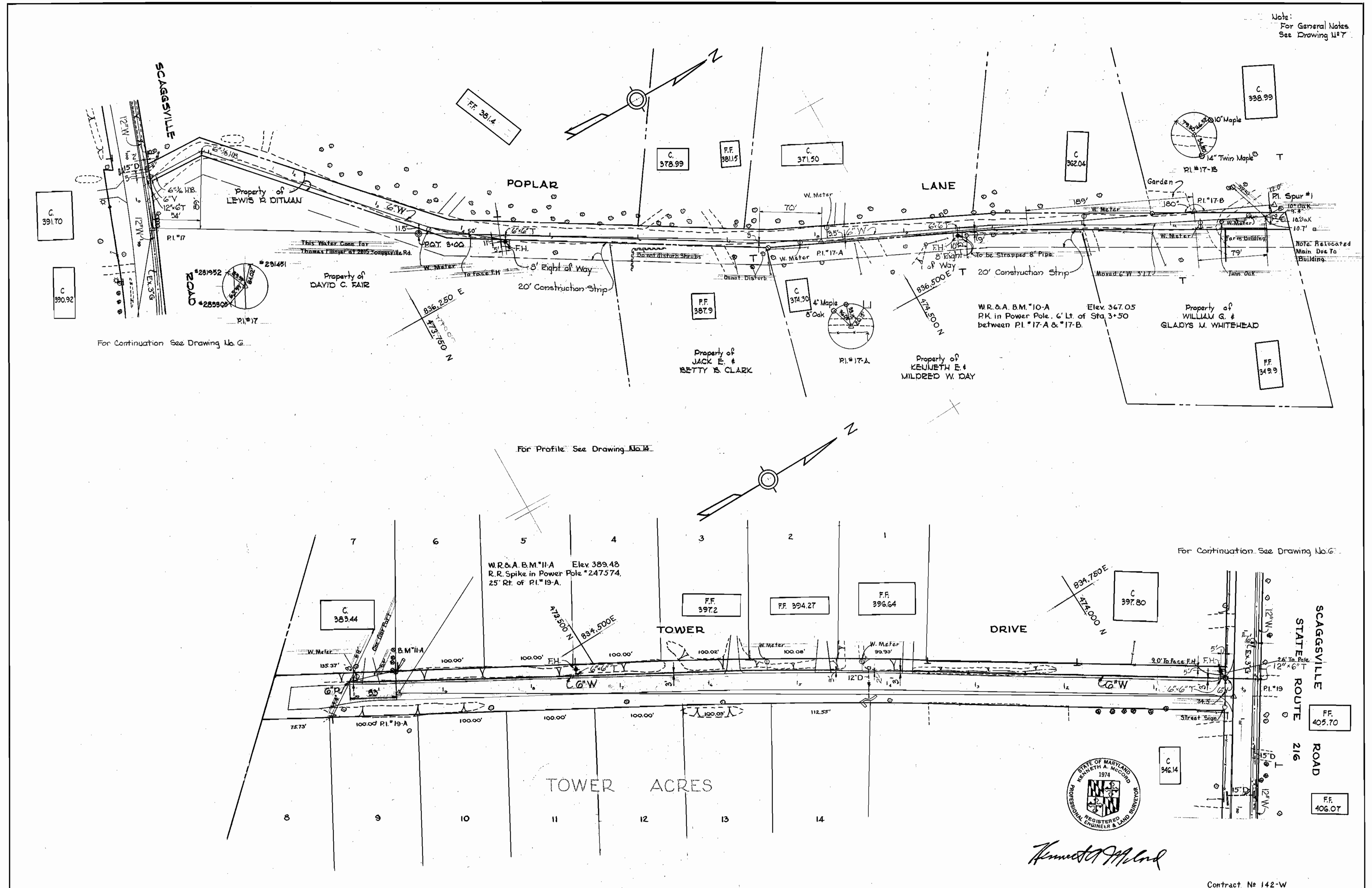
W. O. 5562-2

SEPT. 5, 1968 AS BUILT

F.B. #3615

WS 142-W/9

Note:  
For General Notes  
See Drawing No. 7



*Kenneth A. MacCord*

Contract No 142-W

WHITMAN, REQUARDT & ASSOCIATES ENGINEERS 1304 ST. PAUL ST. BALTIMORE, MARYLAND	HOWARD COUNTY METROPOLITAN COMMISSION 10-2-67 <i>W O Silbert</i> DATE CHIEF ENGINEER	CONTRACT NO. 142-W	PLAN OF WATER MAINS	ELECTION DISTRICT GUILFORD NO. 6	DRAWING NO. 10 OF 15 SCALE 1" = 50' 474-475 474-475 473-475
---	--	--------------------	------------------------	-------------------------------------	---

W. O. 5562-2

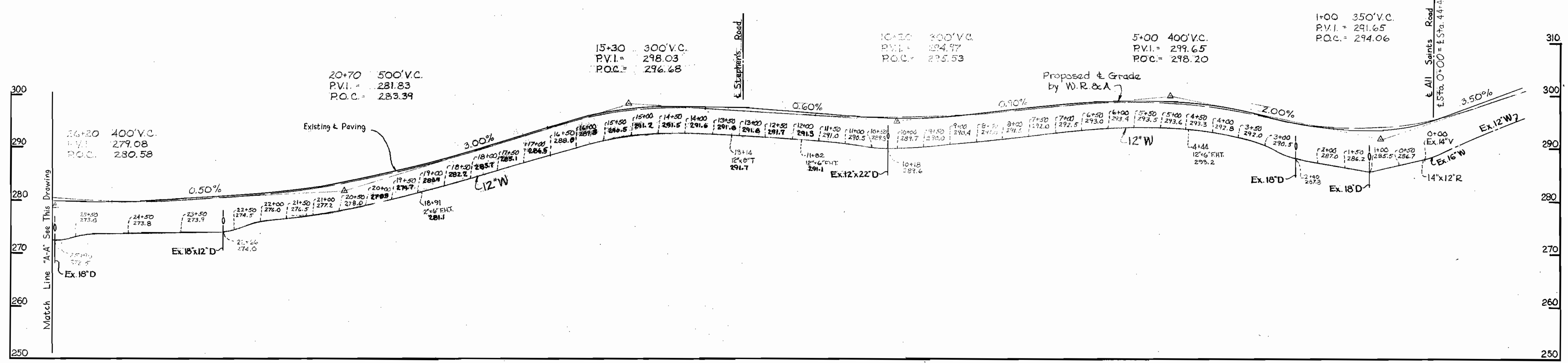
P.B. 3615  
F.B. 3616

WS 142-W/10

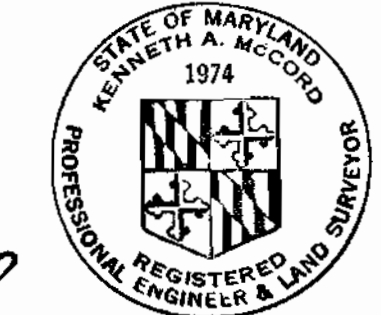
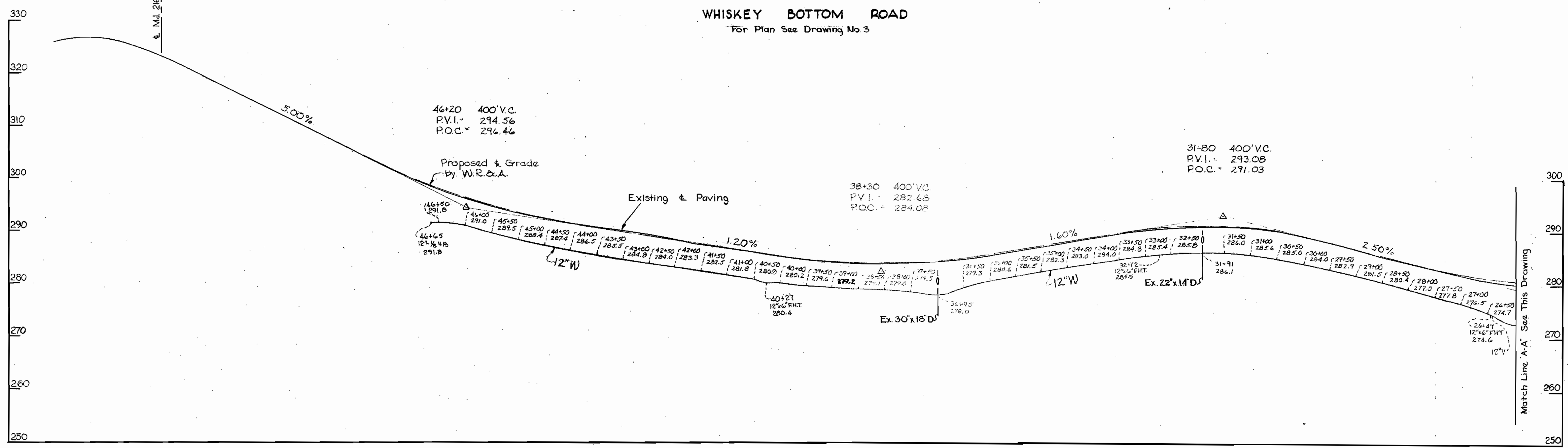


WHISKEY BOTTOM ROAD  
For Plan See Drawing No. 2

Note:  
For General Notes  
See Drawing N<sup>o</sup> 7



WHISKEY BOTTOM ROAD  
For Plan See Drawing No. 3



*Kenneth A. McCord*

Contract N<sup>o</sup> 142-W

WHITMAN, REQUARDT & ASSOCIATES ENGINEERS 1304 ST. PAUL ST. BALTIMORE, MARYLAND	HOWARD COUNTY METROPOLITAN COMMISSION DATE <u>10-2-67</u> <i>W. J. Libal</i> CHIEF ENGINEER	CONTRACT NO. <u>142-W</u>	PROFILES OF WATER MAINS	ELECTION DISTRICT GUILFORD NO. 6	DRAWING NO. <u>11</u> OF <u>15</u> SCALE H-1"=100' V-1"=10'
---	---	---------------------------	----------------------------	-------------------------------------	---

W. O. 5562-2

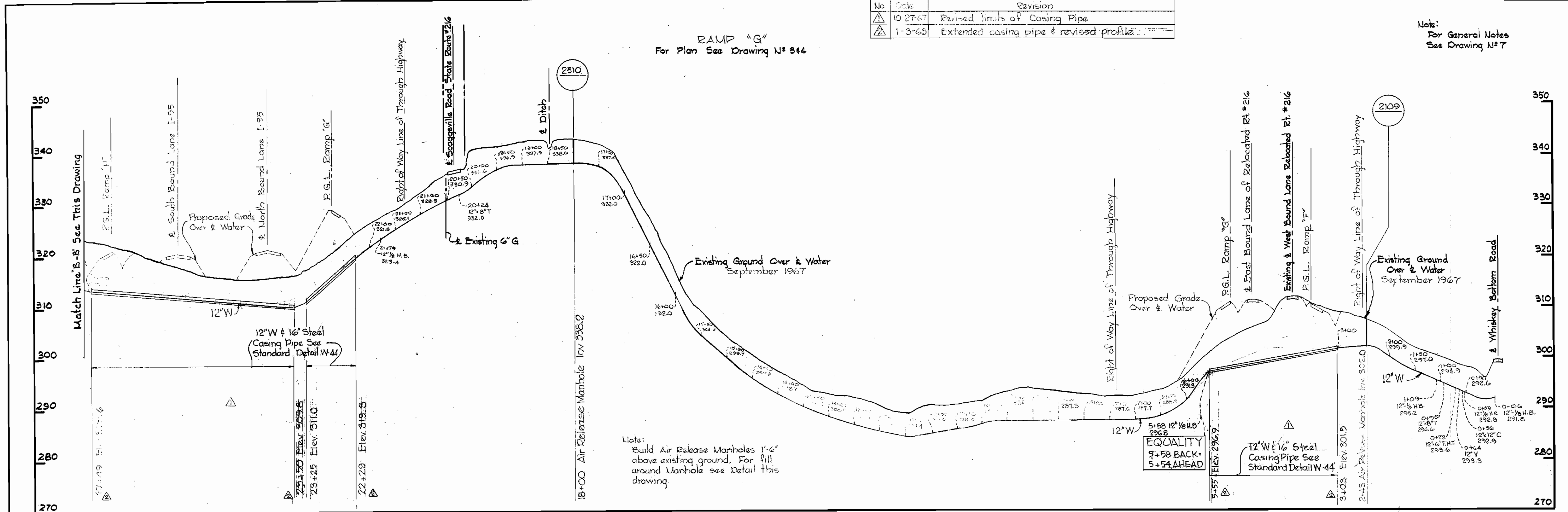
SEPT. 5, 1968 AS BUILT

WS 142-W/11

WS 142-N/12

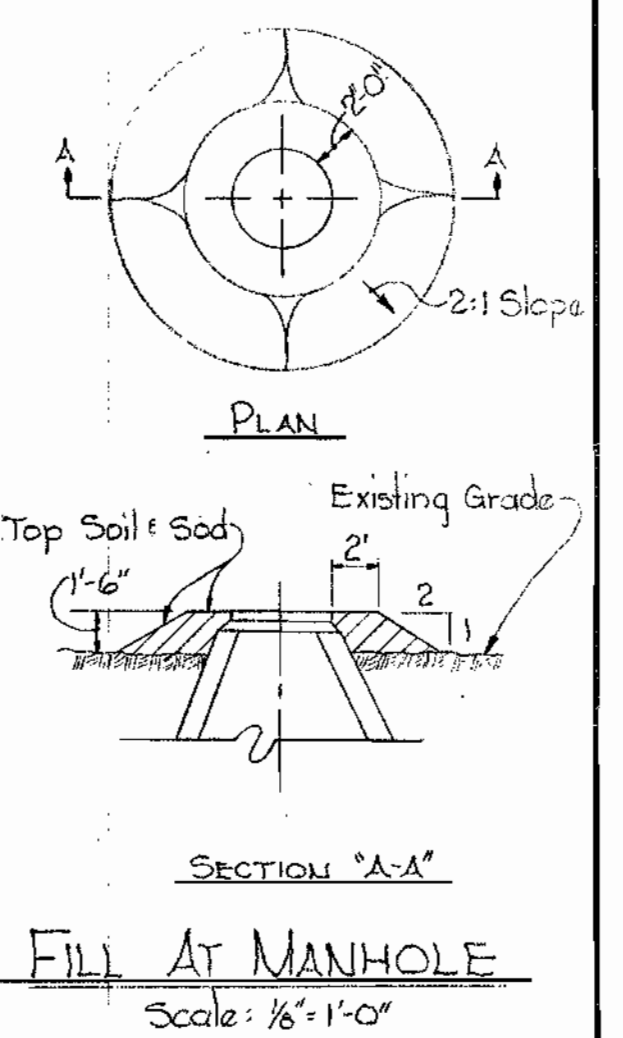
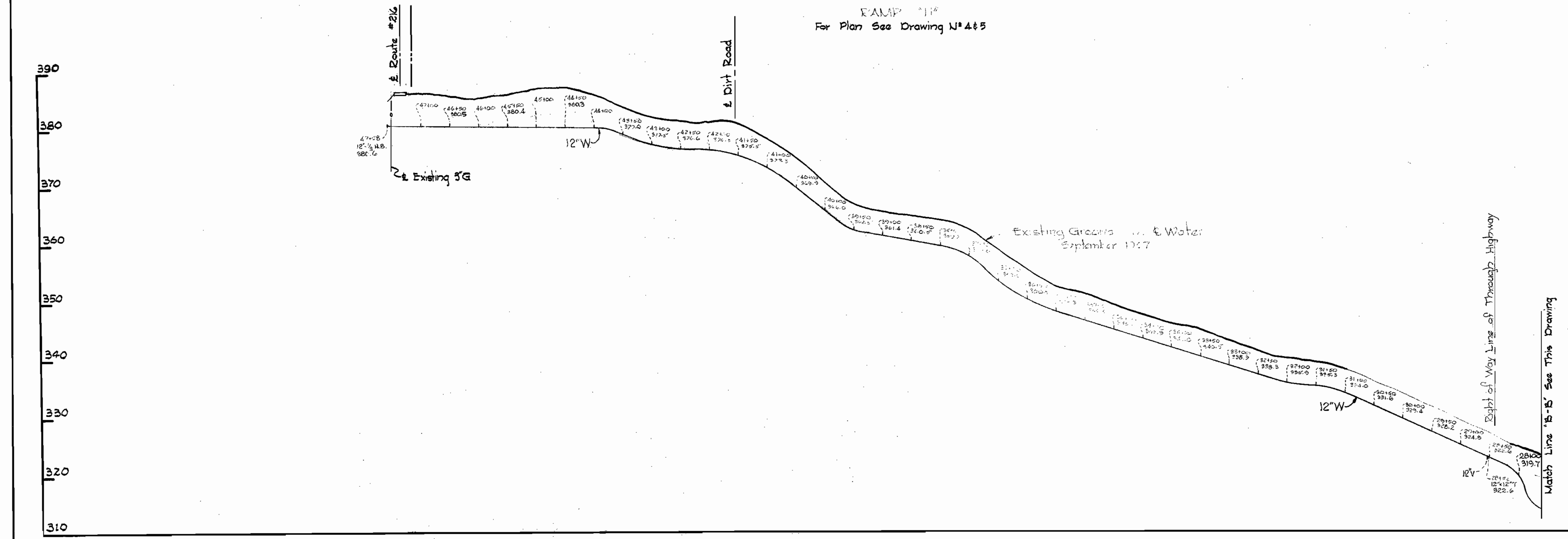
No.	Date	Revision
△	10-27-67	Revised limits of Casing Pipe
△	1-3-68	Extended casing pipe & revised profile

Note:  
For General Notes  
See Drawing N# 7



Note:  
Build Air Release Manholes 1'-6"  
above existing ground. For fill  
around Manhole see Detail this  
drawing.

RAMP 'H'  
For Plan See Drawing N# 4 & 5



Contract 142-W

WHITMAN, REQUARDT & ASSOCIATES ENGINEERS 1304 ST. PAUL ST. BALTIMORE, MARYLAND	HOWARD COUNTY METROPOLITAN COMMISSION DATE 10-2-67 W. O. PILLBUB CHIEF ENGINEER	CONTRACT NO. 142-W	PROFILES OF WATER MAINS	ELECTION DISTRICT GUILFORD NO. 6	DRAWING NO. 12	SCALE H: 1"=100' V: 1"=10'
					OF 15	

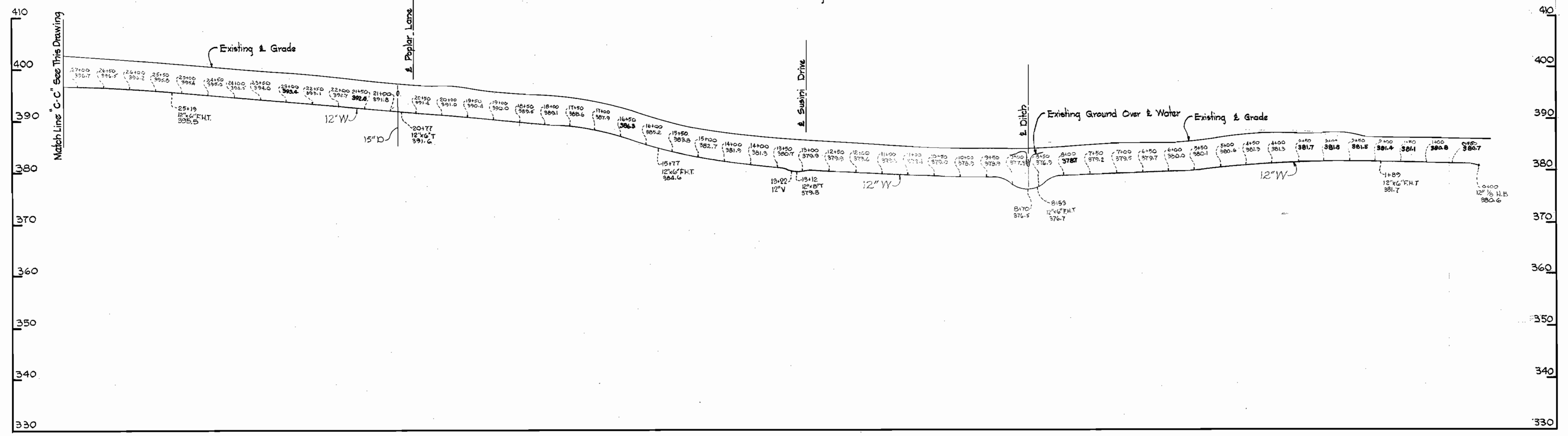
W. O. 5562-2

SEPT. 5, 1968 AS BUILT

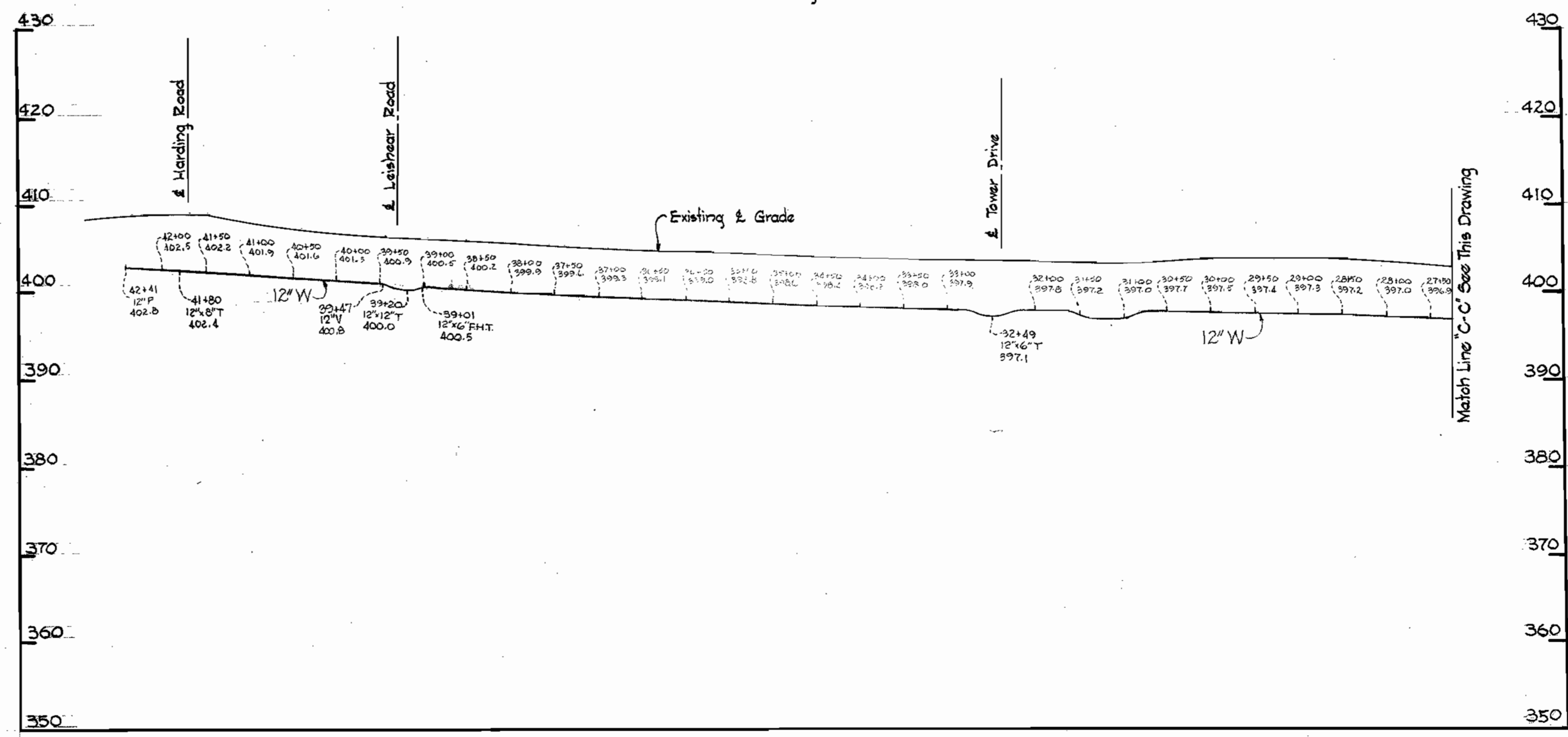


Note:  
For General Notes  
See Drawing N° 7

SCAGGSVILLE ROAD ROUTE 216  
For Plan See Drawing N° 546



SCAGGSVILLE ROAD ROUTE 216  
For Plan See Drawing N° 617



*Kenneth A. McCord*

Contract 142-YV

WHITMAN, REQUARDT & ASSOCIATES  
ENGINEERS  
1304 ST. PAUL ST.  
BALTIMORE, MARYLAND

HOWARD COUNTY METROPOLITAN COMMISSION  
10-2-67 *W.O. Libbert*  
DATE CHIEF ENGINEER

CONTRACT NO. 142-W

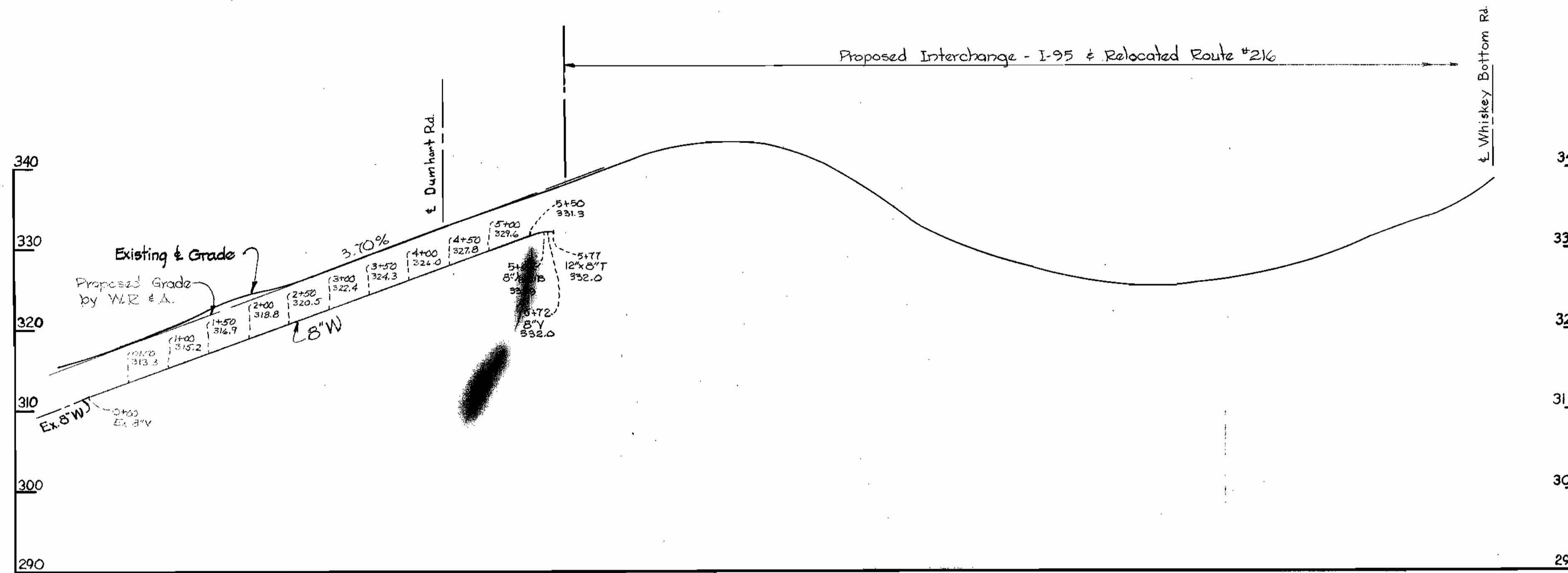
PROFILES OF  
WATER MAINS

ELECTION DISTRICT  
GUILFORD NO. 6

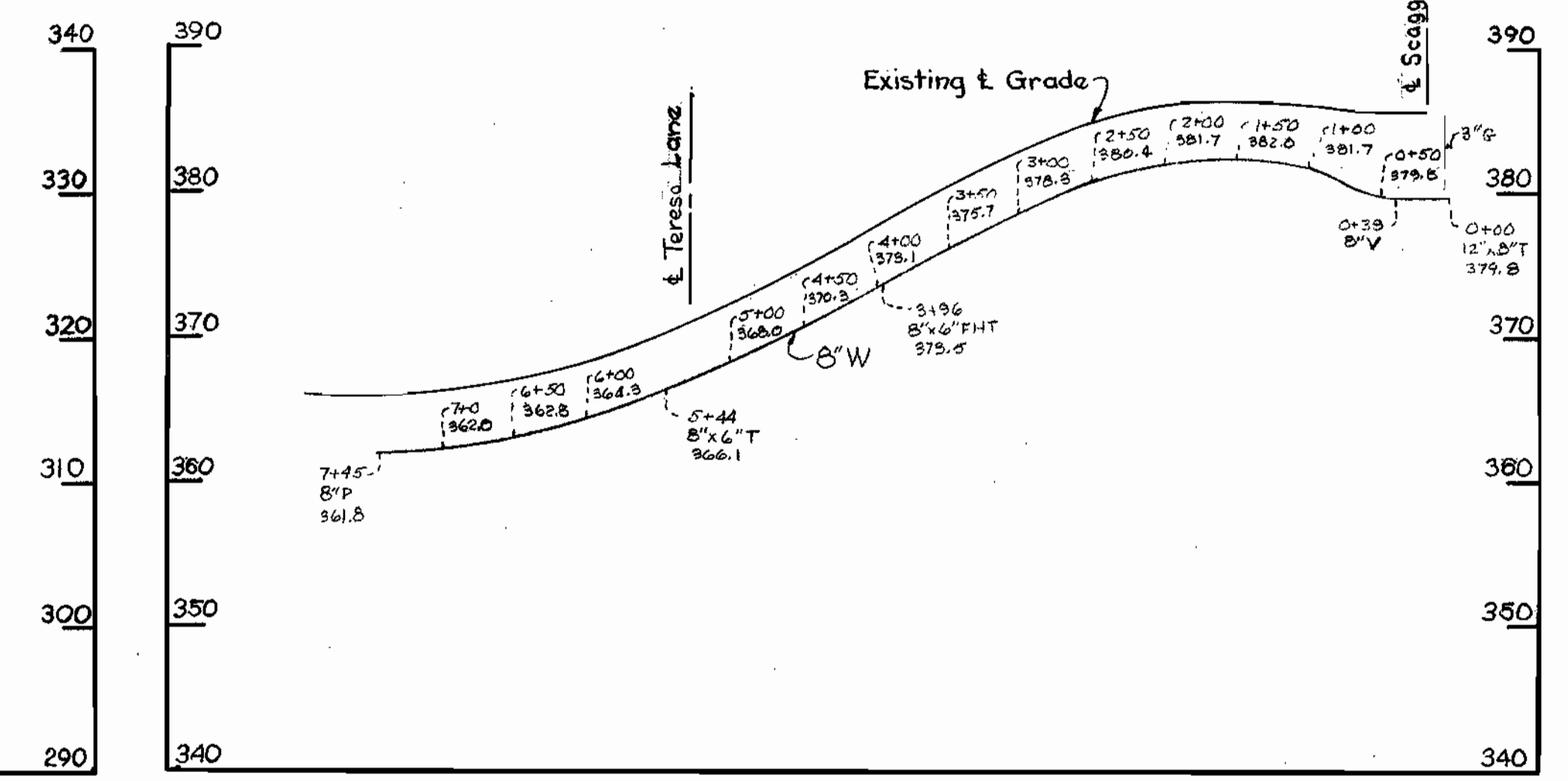
DRAWING NO. 13 OF 15  
SCALE H-1"=100' V-1"=10'

WS 142-W/13

SCAGGSVILLE ROAD ROUTE 216  
For Plan See Drawing No. 8

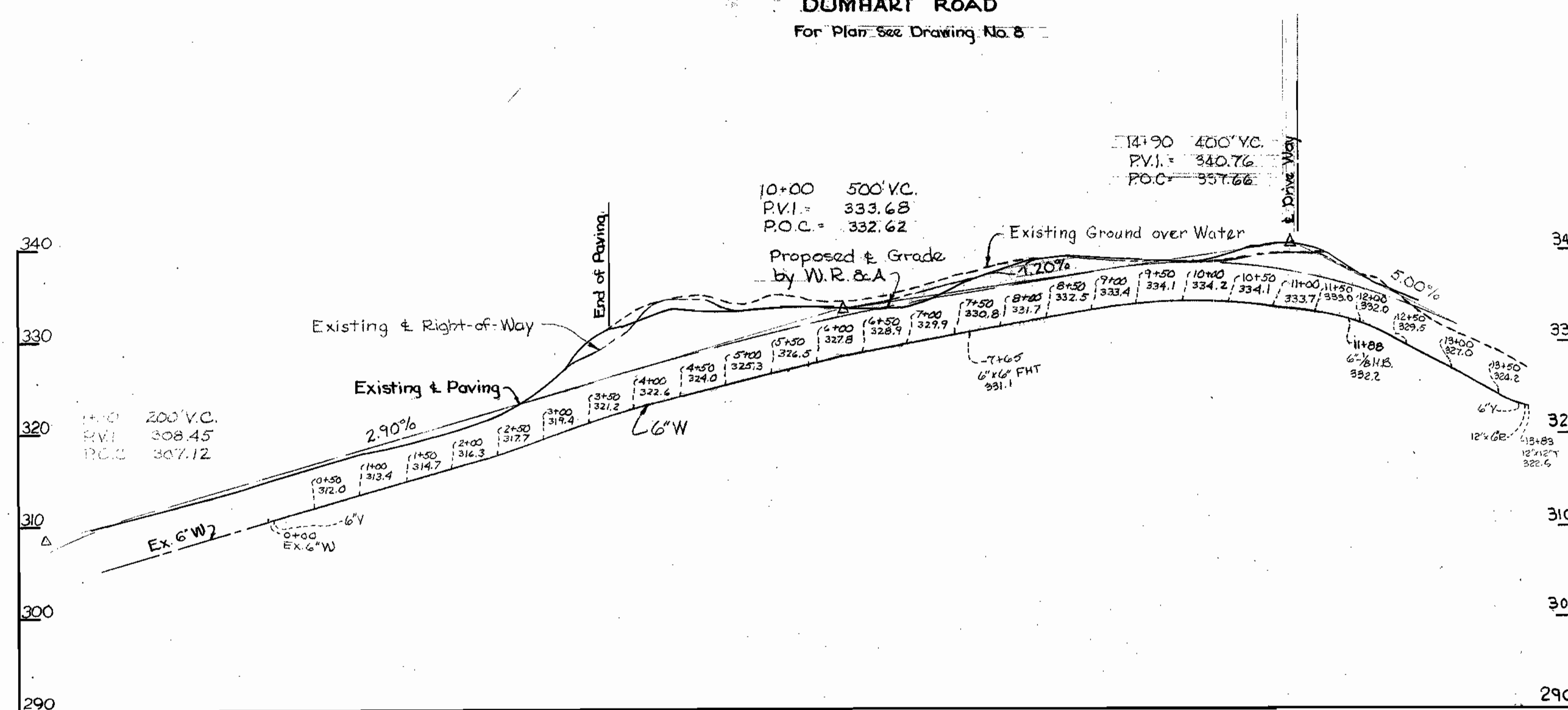


SUSINI DRIVE  
For Plan See Drawing No. 9

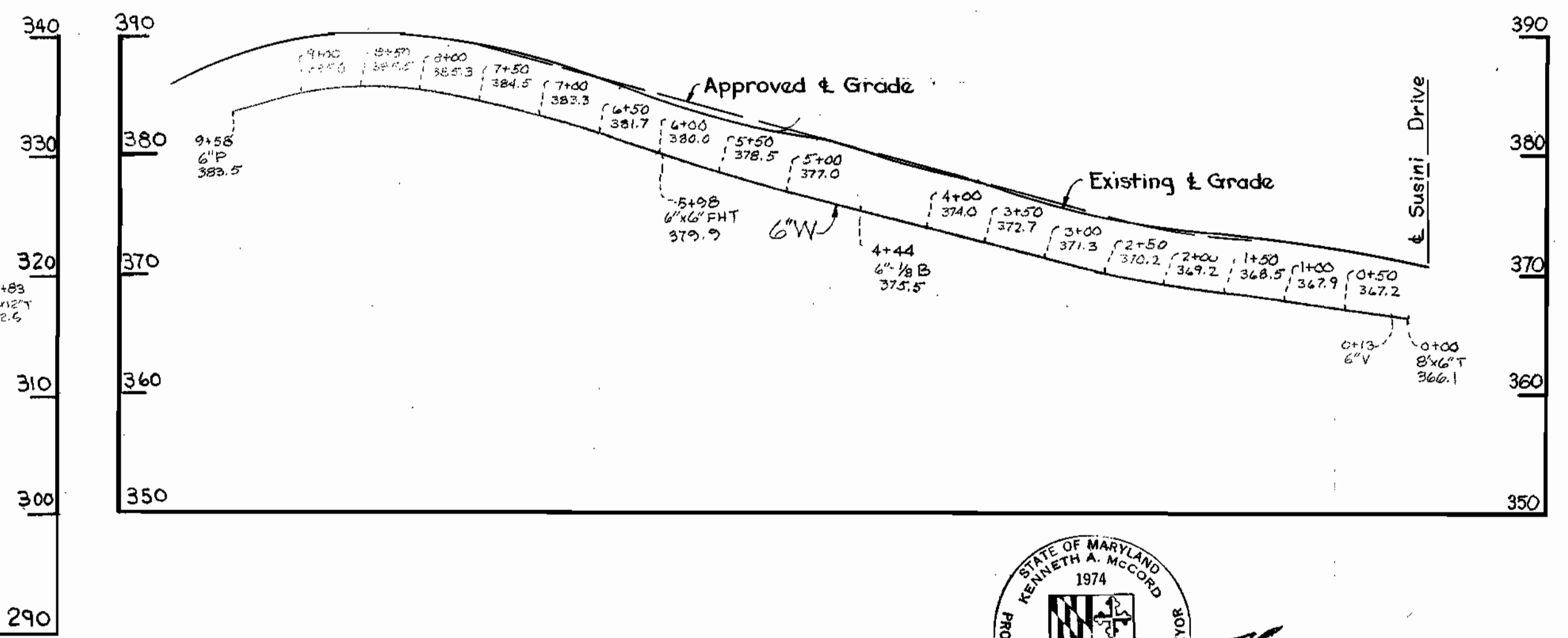


Note:  
For General Notes  
See Drawing No. 7

DUMHART ROAD  
For Plan See Drawing No. 8



TERESA LANE  
For Plan See Drawing No. 9



*Kenneth A. McCord*  
REGISTERED ENGINEER & LAND SURVEYOR

Contract No. 142-W

WHITMAN, REQUARDT & ASSOCIATES  
ENGINEERS  
1304 ST. PAUL ST.  
BALTIMORE, MARYLAND

HOWARD COUNTY METROPOLITAN COMMISSION  
DATE 10-2-67  
W. O. Libbert  
CHIEF ENGINEER

CONTRACT NO. 142-W

PROFILES OF  
WATER MAINS

ELECTION DISTRICT  
GUILFORD NO. 6

DRAWING NO. 14 OF 15  
SCALE H-1"=100' V-1"=10'

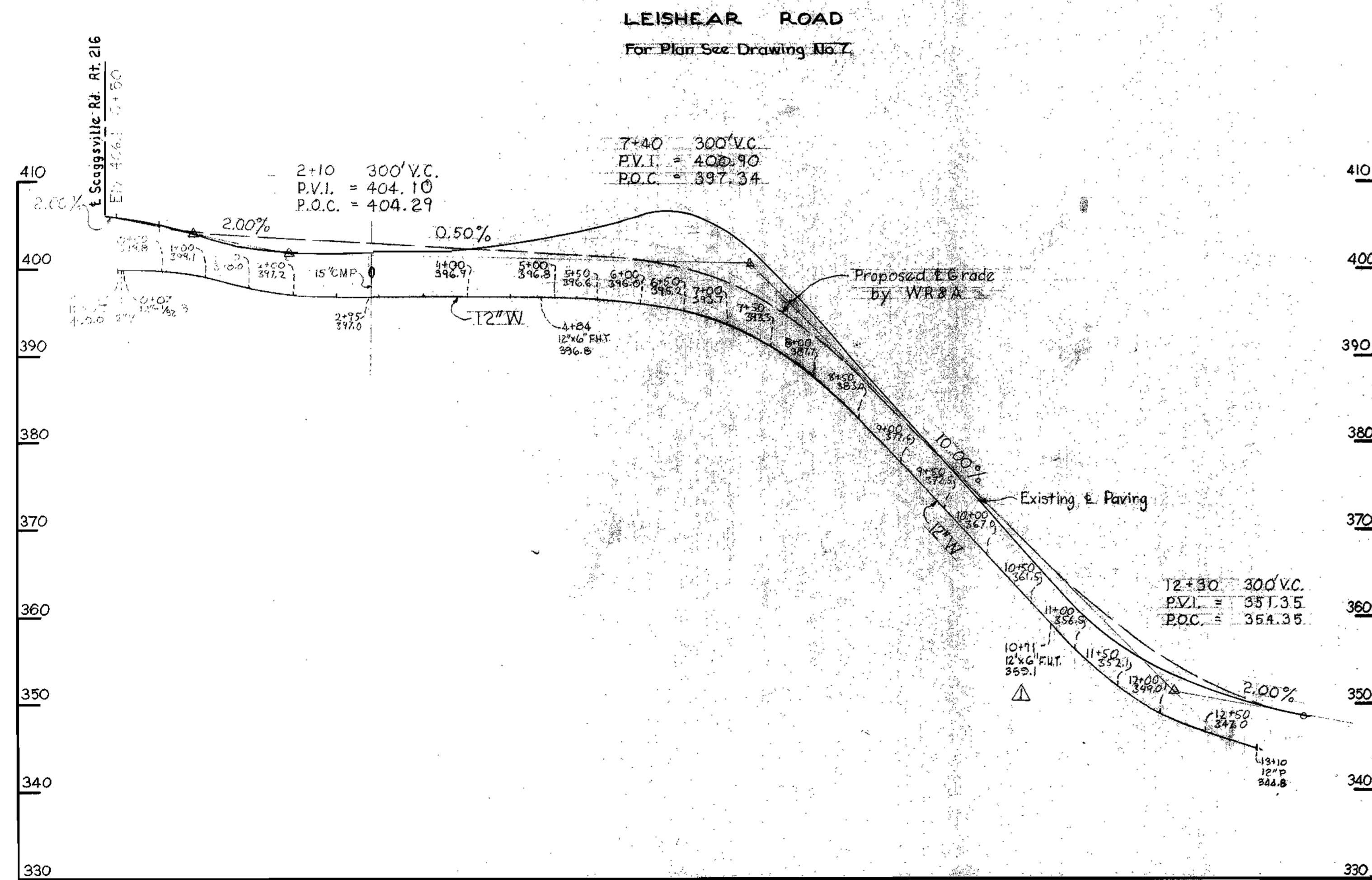
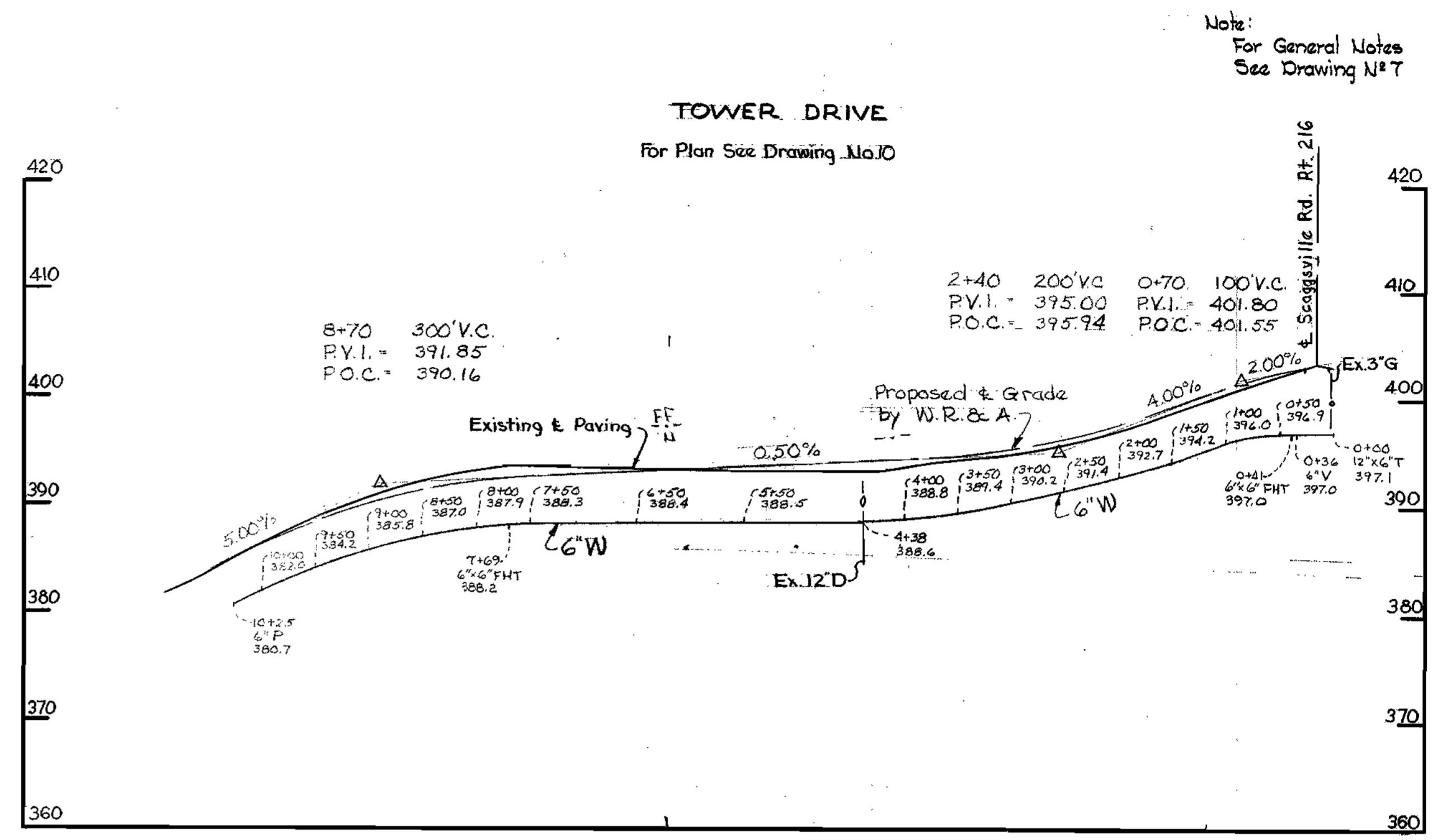
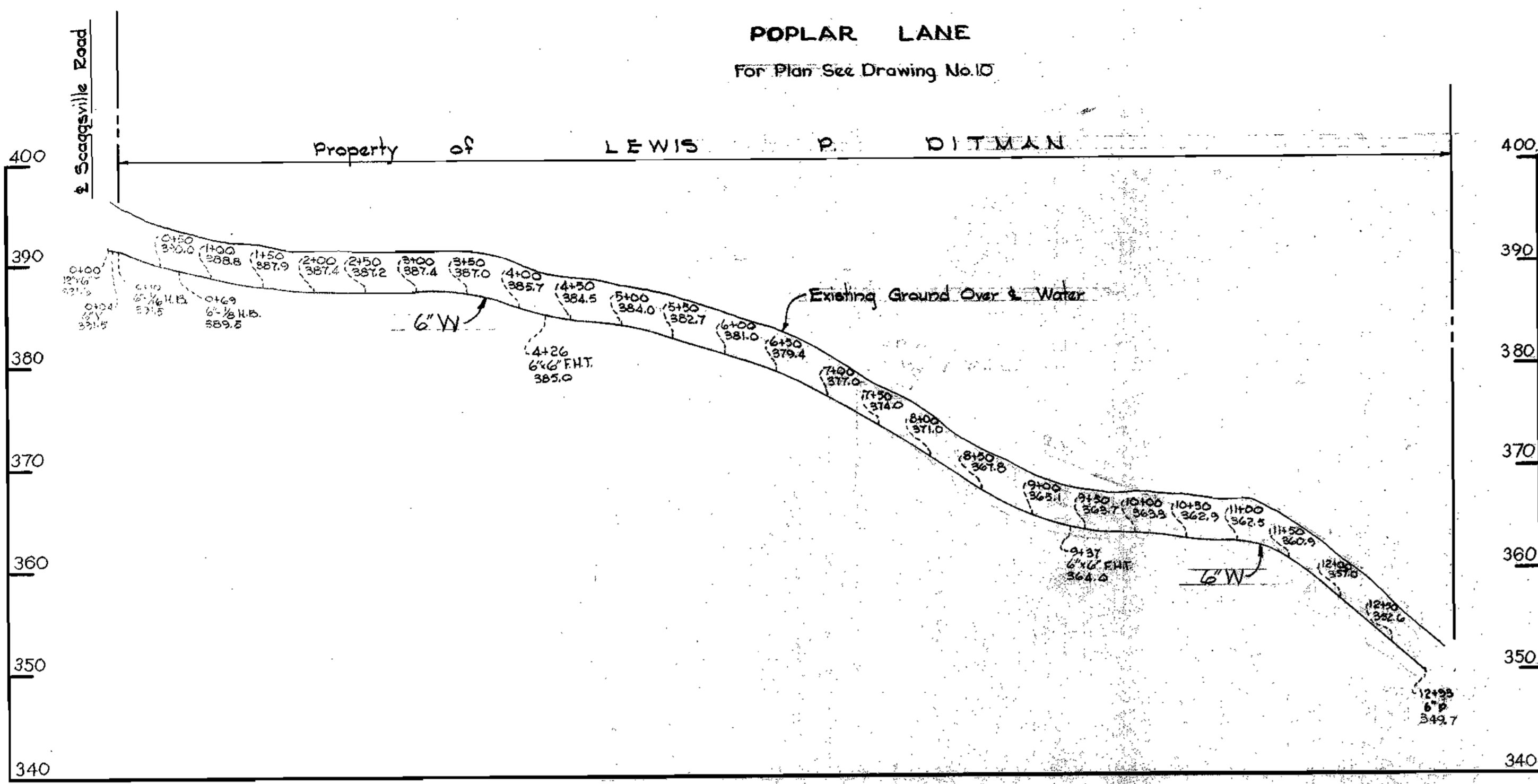
SEPT. 5, 1968 AS BUILT

W. O. 5562-2

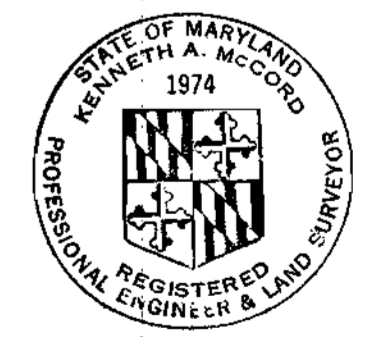
W/S 142-W/14



WS 142-W/15



Note:  
For General Notes  
See Drawing No. 7



*Kenneth A. McLeod*

11-16-67	Fire Hydrant is relocated water sta. 10+21, Leishear Road
Uo. Date	Revision

<b>WHITMAN, REQUARDT &amp; ASSOCIATES</b> ENGINEERS 1304 ST. PAUL ST. BALTIMORE, MARYLAND	<b>HOWARD COUNTY METROPOLITAN COMMISSION</b> DATE <u>10-2-67</u> <i>W O Kilpatrick</i> CHIEF ENGINEER	<b>CONTRACT NO. 142-W</b>	<b>PROFILES OF WATER MAINS</b>  <b>ELECTION DISTRICT GUILFORD NO. 6</b>	<b>CONTRACT NO. 142-W</b> <b>DRAWING NO. 15 OF 15</b> <b>SCALE H-1"=100' V-1"=10'</b>
--	---	---------------------------	---	---

W.O. 5562-2

SEPT. 5, 1968  
AS BUILT