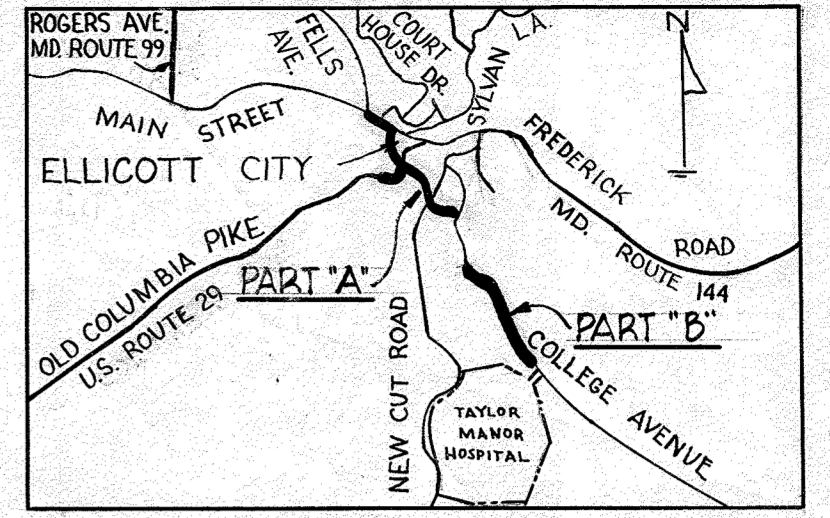
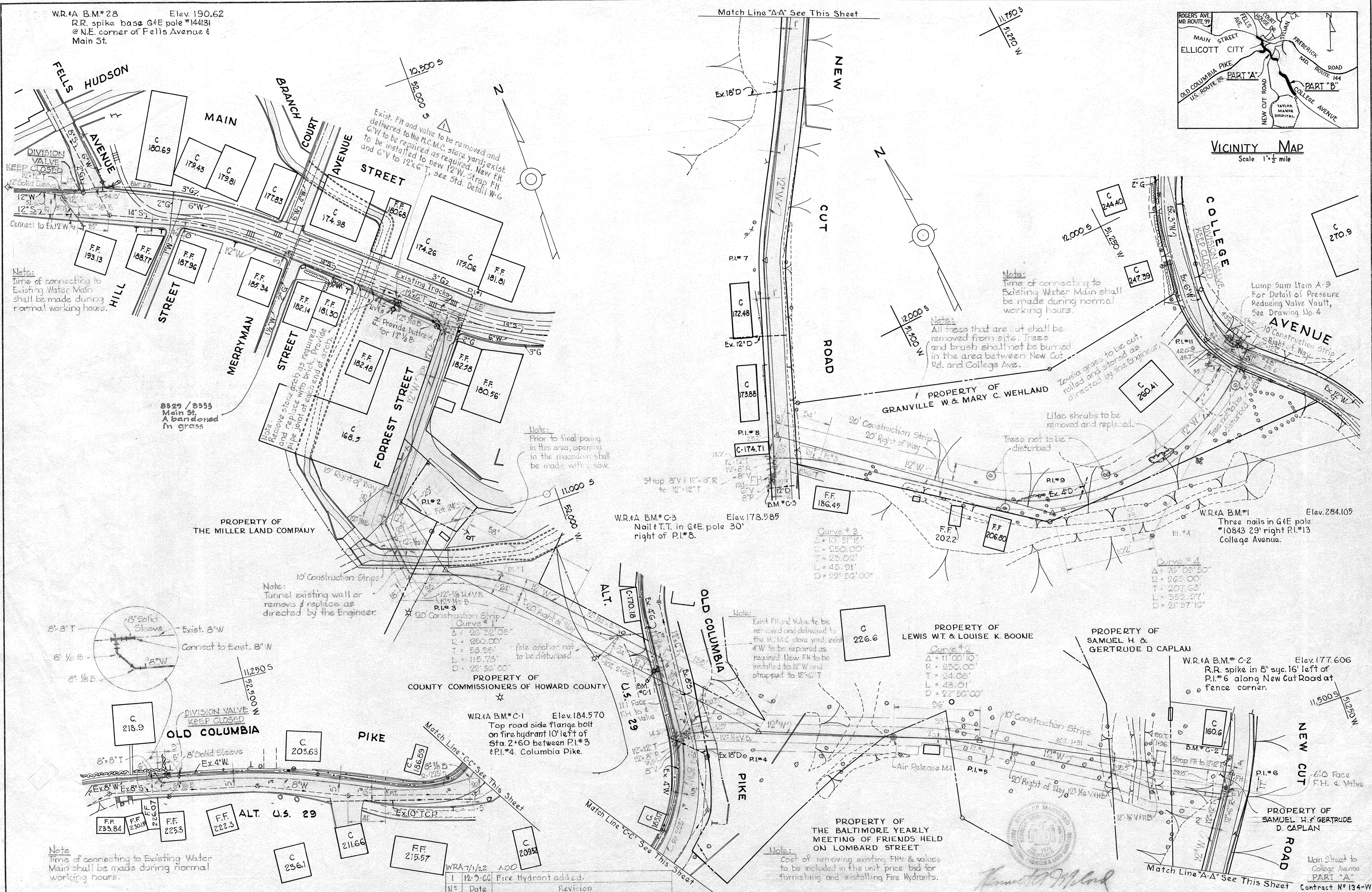


W.R.#A B.M.#28 Elev. 190.62  
 R.R. spike base G&E pole #144131  
 @ N.E. corner of Fells Avenue & Main St.



VICINITY MAP  
 Scale 1" = 1/2 mile



Note:  
 Time of connecting to Existing Water Main shall be made during normal working hours.

Note:  
 Time of connecting to Existing Water Main shall be made during normal working hours.

Lump Sum Item A-9  
 For Detail of Pressure Reducing Valve Vault, See Drawing No. 4

Note:  
 Prior to final paving in this area, opening in the macadam shall be made with a saw.

Note:  
 Tunnel existing wall or remove & replace as directed by the Engineer.

Note:  
 Exist. FH and valve to be removed and delivered to the H.C.M.C. store yard; exist. 4" W to be repaired as required. New FH to be installed to 12" W and strapped to 12" W T.

Note:  
 Cost of removing existing FH's & valves to be included in the unit price bid for furnishing and installing Fire Hydrants.

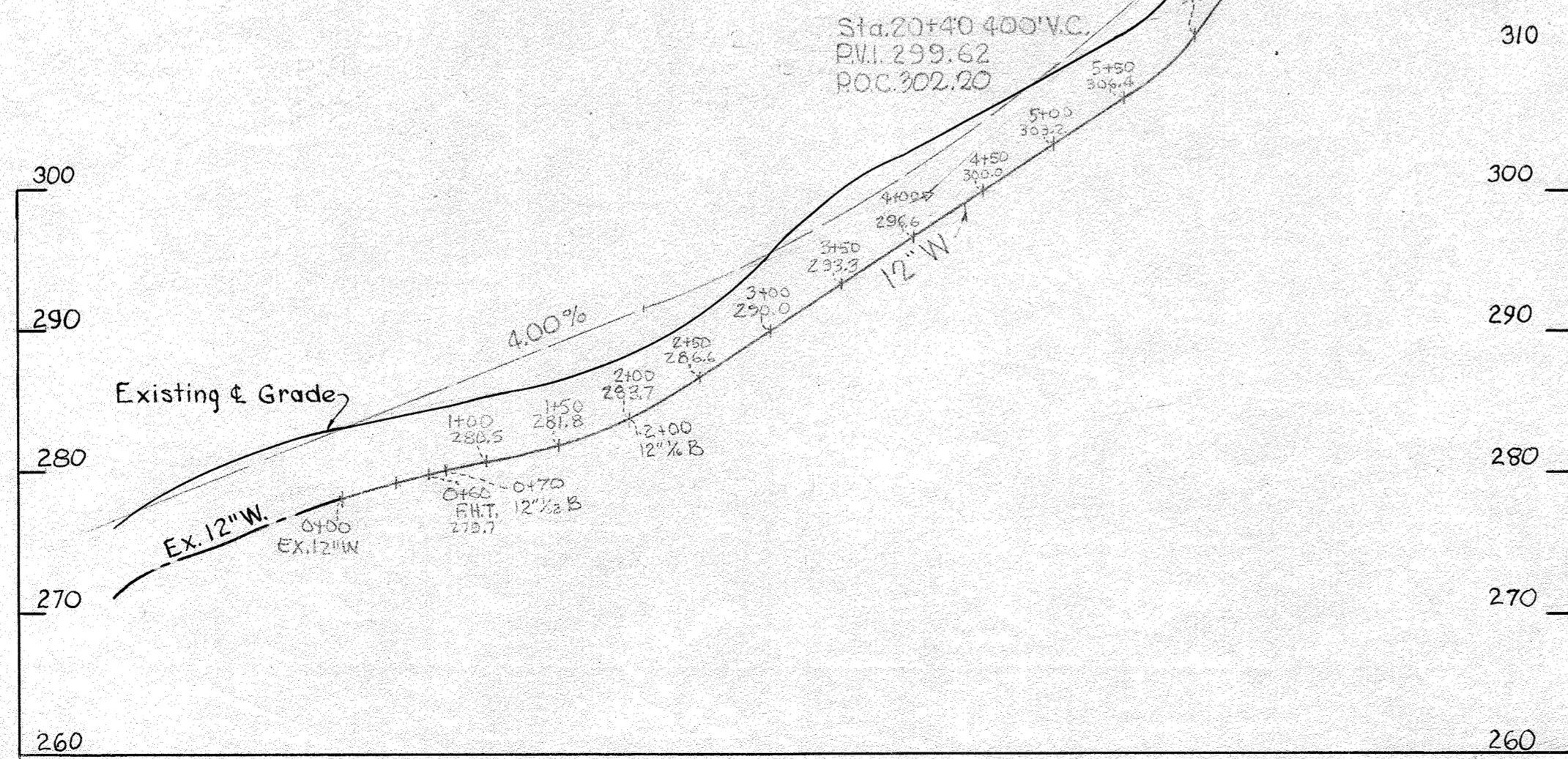
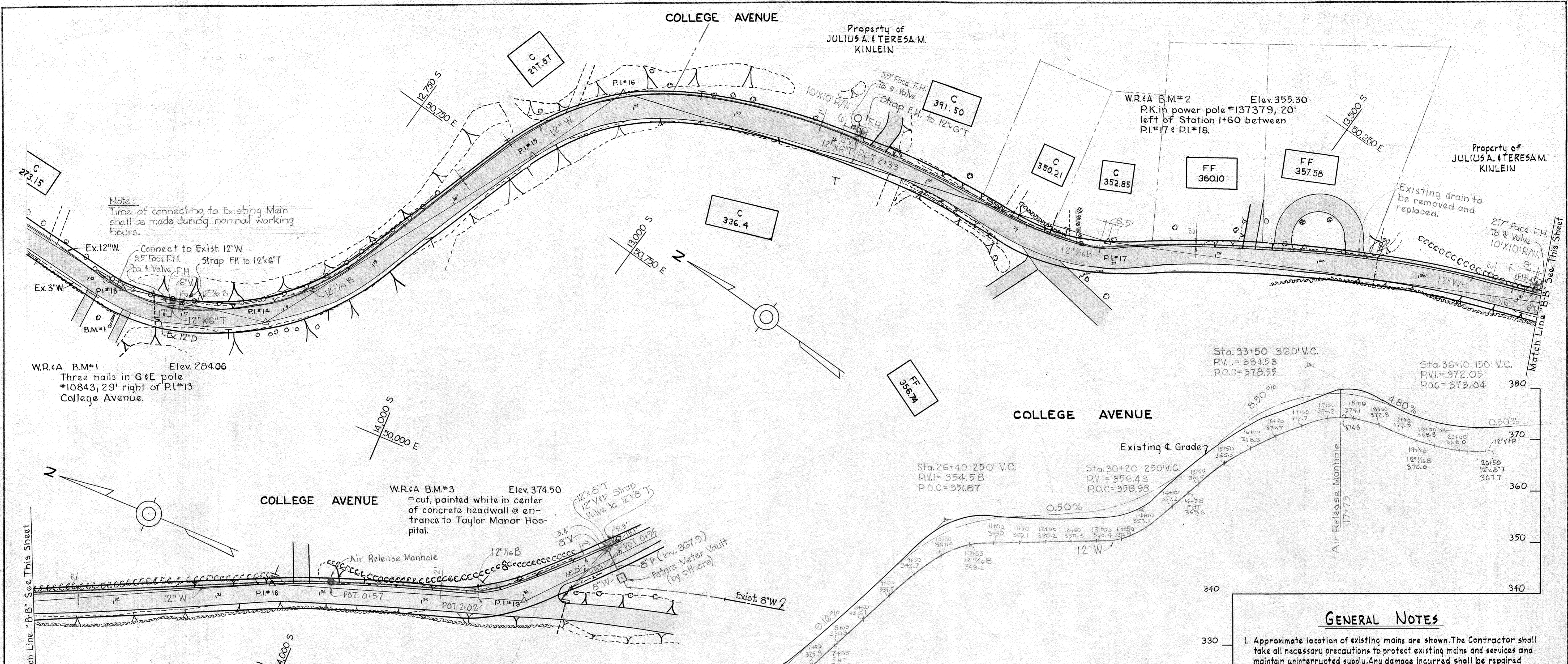
Note:  
 Time of connecting to Existing Water Main shall be made during normal working hours.

<b>WHITMAN, REQUARDT &amp; ASSOCIATES</b> ENGINEERS 1304 ST. PAUL ST. BALTIMORE, MARYLAND	<b>HOWARD COUNTY METROPOLITAN COMMISSION</b> DATE: 11-8-66 CHIEF ENGINEER: W. O. Roberts	<b>CONTRACT NO. 134-W</b>	<b>PLAN OF WATER MAINS</b>	<b>ELECTION DISTRICT ELICOTT CITY NO. 2</b>	<b>DRAWING NO. 1 OF 4</b> <b>SCALE 1" = 50'</b>
--	--	---------------------------	----------------------------	---	--

W.O. 5562-2

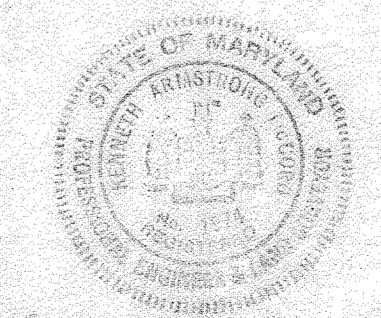
20 JUNE 67 AS BUILT F.D. 3538

WS 134-W/1



**GENERAL NOTES**

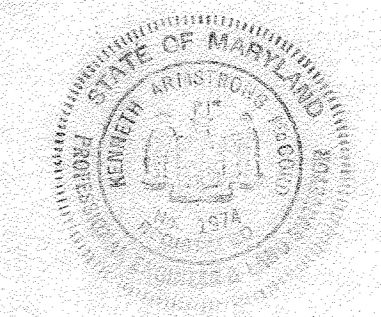
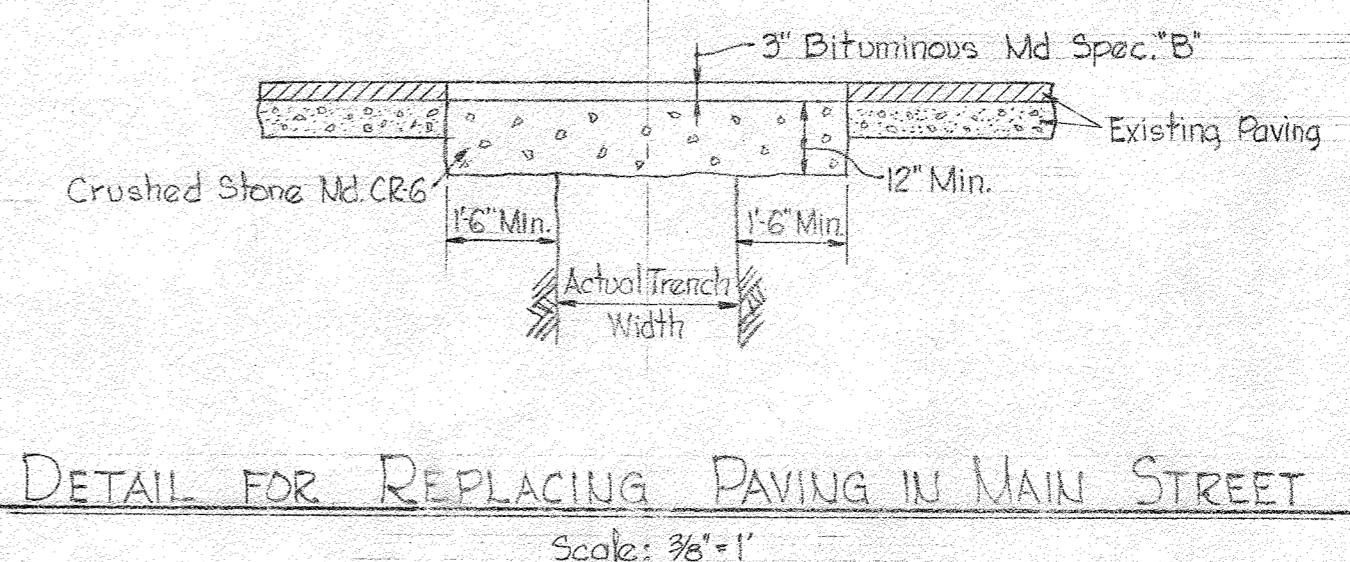
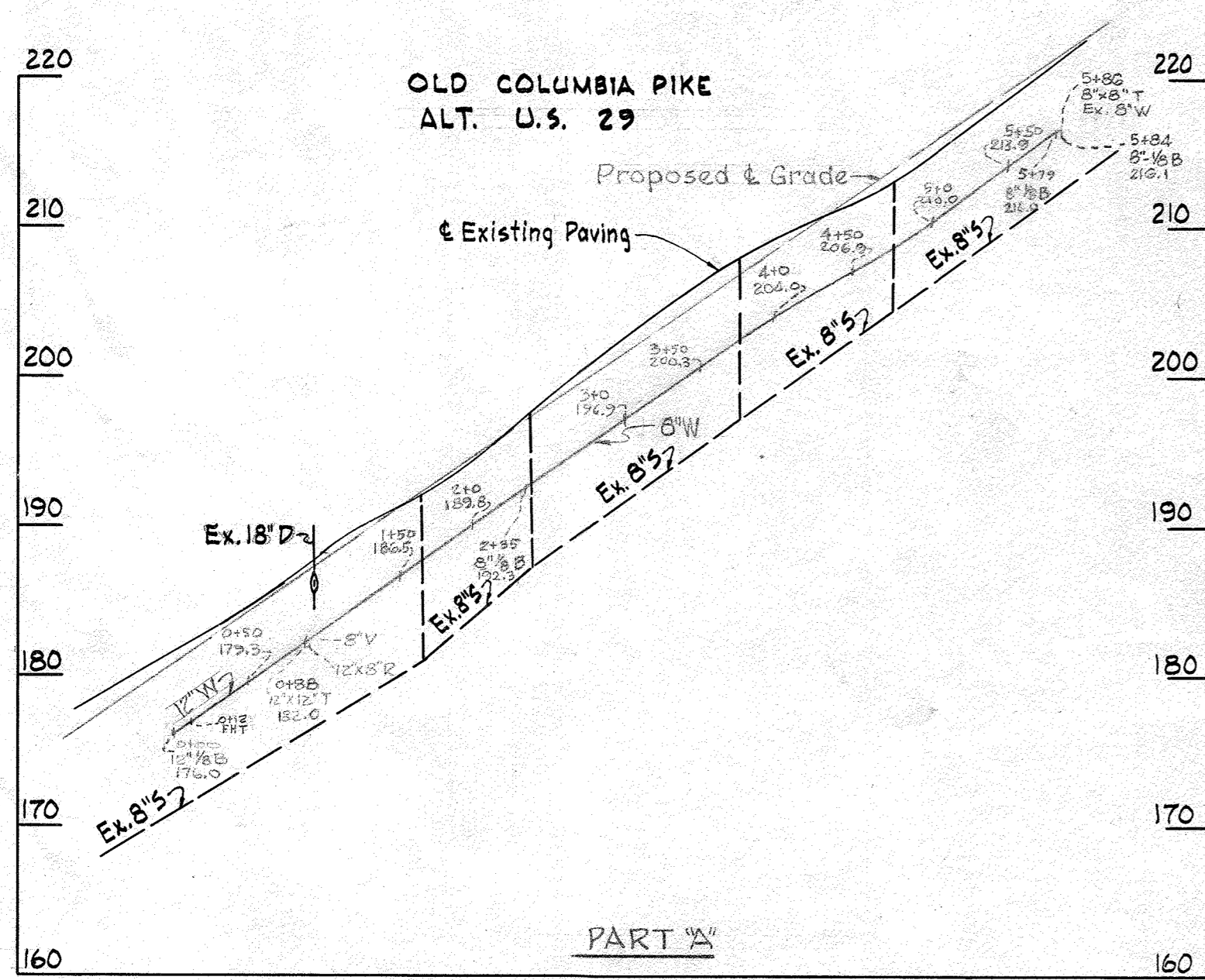
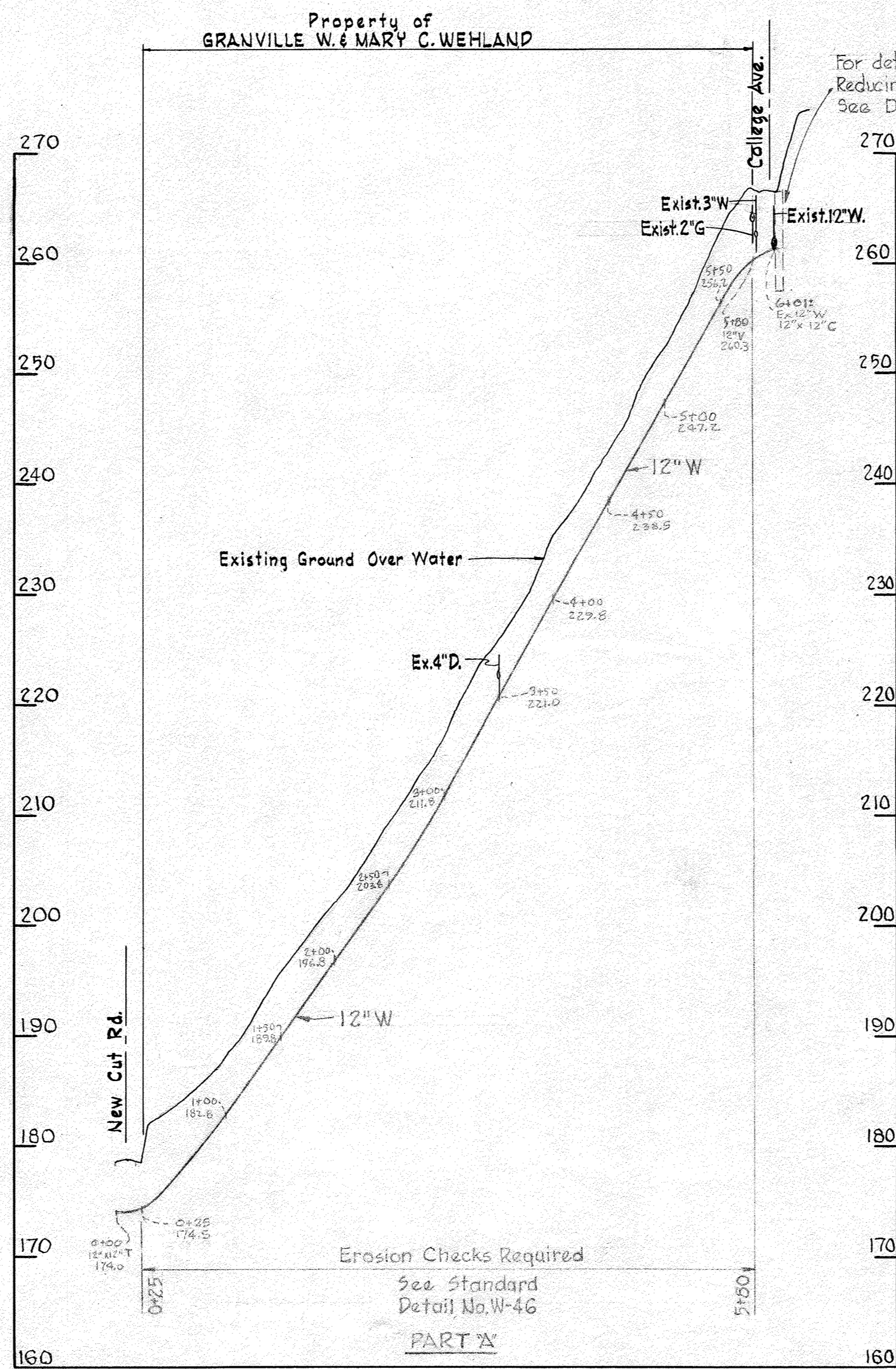
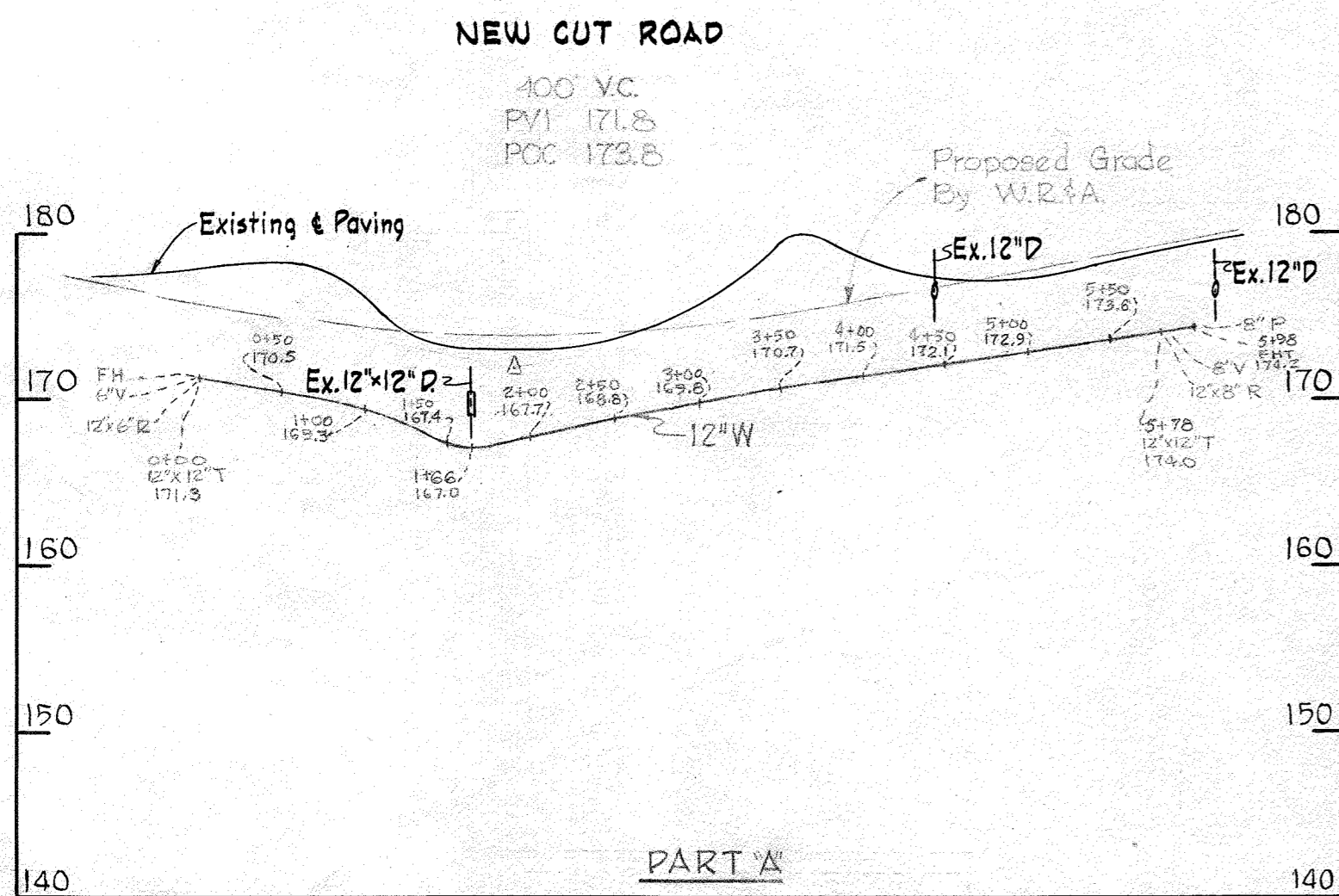
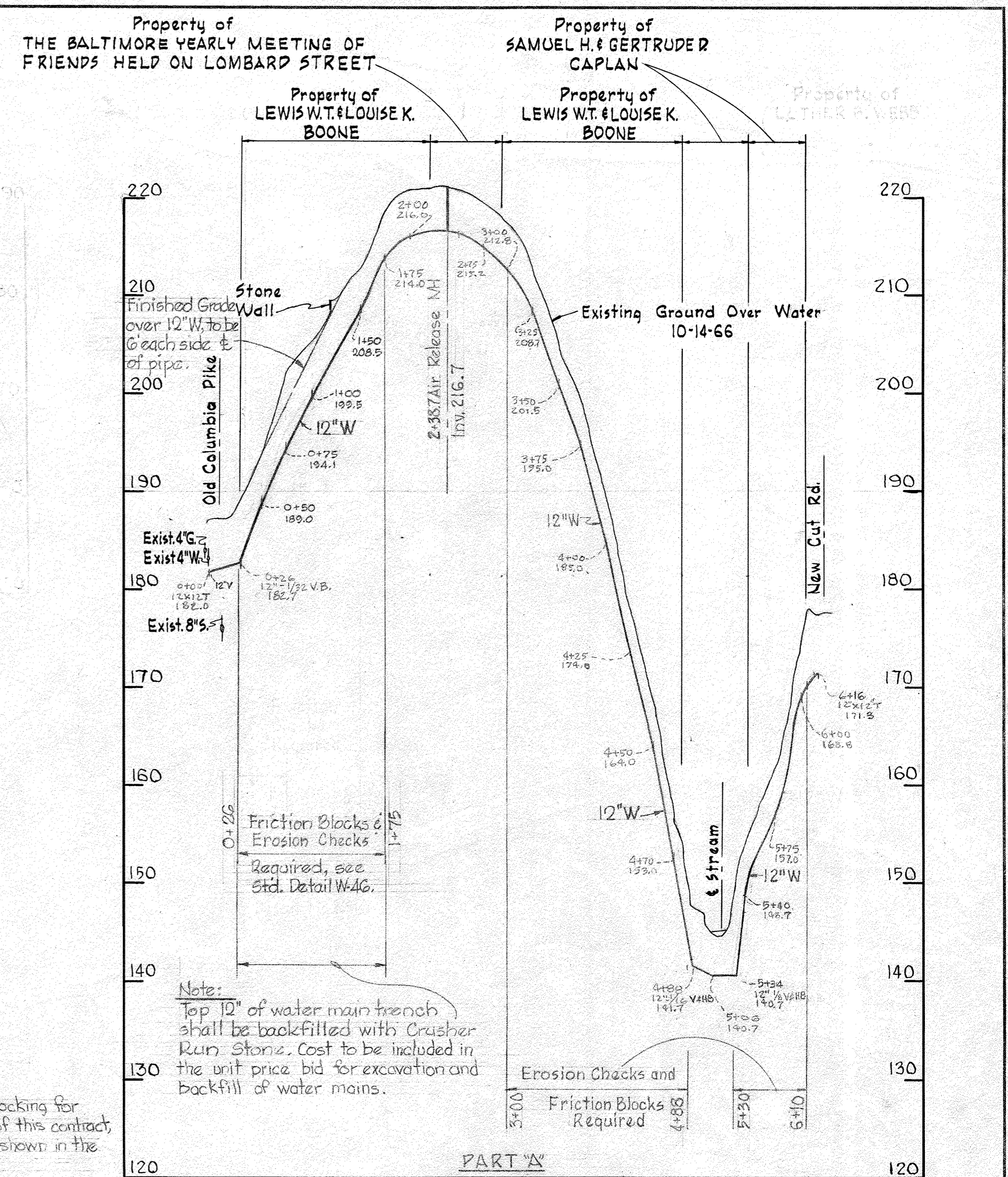
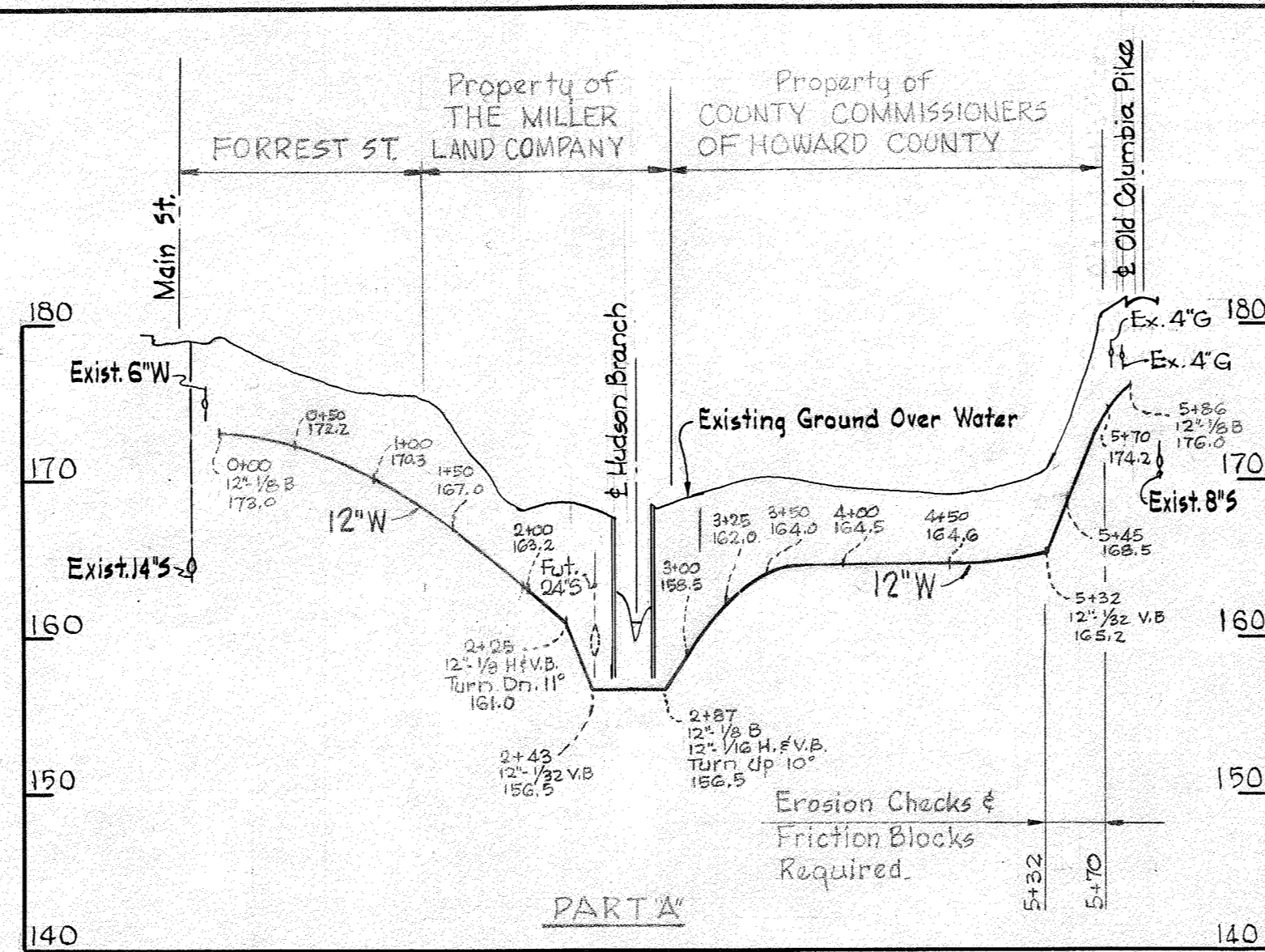
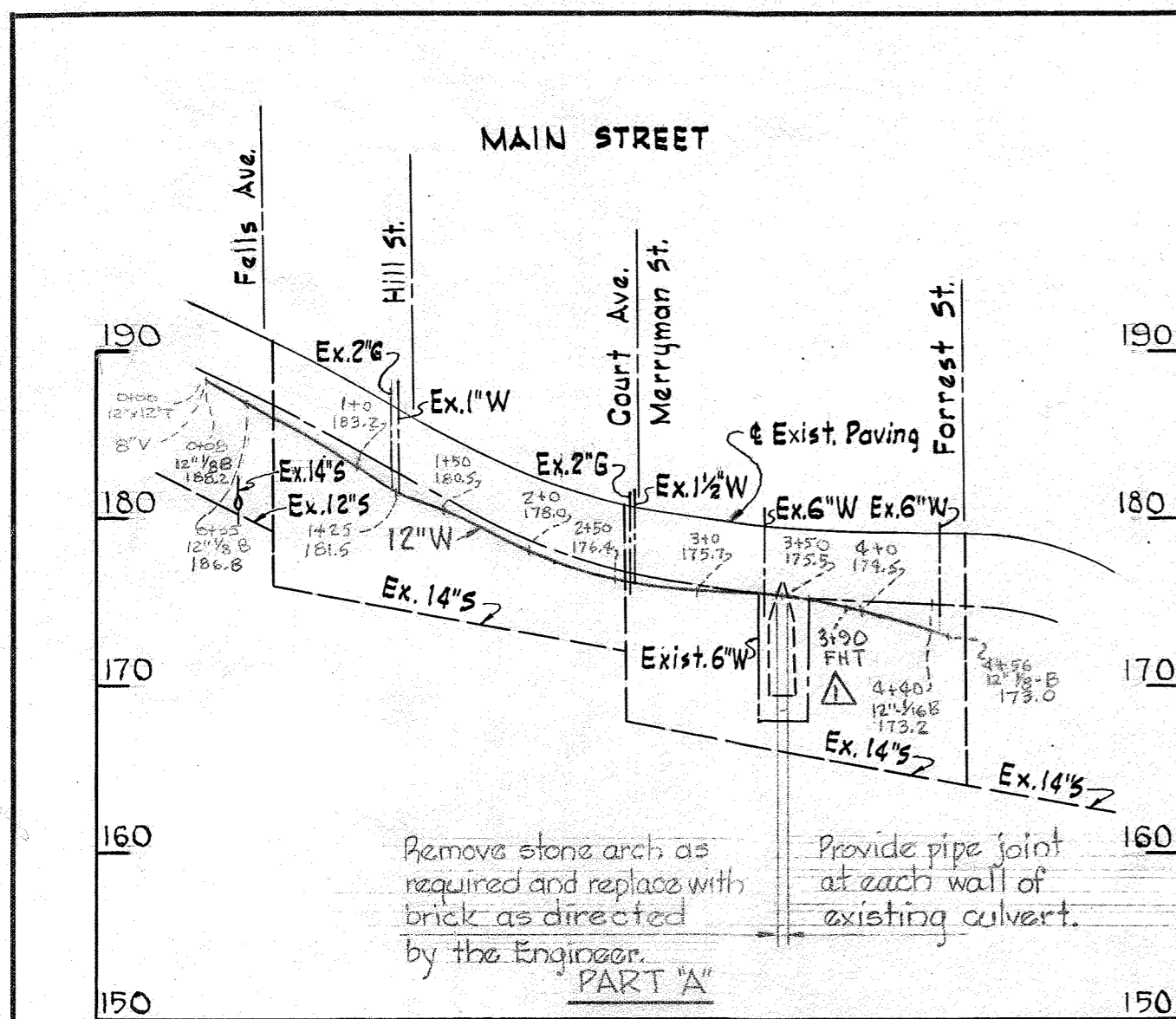
1. Approximate location of existing mains are shown. The Contractor shall take all necessary precautions to protect existing mains and services and maintain uninterrupted supply. Any damage incurred shall be repaired immediately.
2. All pipe elevations shown are invert elevations. All water mains to have a minimum of 3 1/2' cover unless otherwise stated.
3. The Contractor shall locate existing utilities a minimum of two weeks in advance of construction operations in vicinity of utilities.
4. For all standard details see Standards bound in Specifications.
5. Block all fittings with concrete, see standard details bound in Specifications.
6. Bury line elevation on fire hydrant shall be set the same as edge of paving or directed by the engineer in the field.
7. Buttress fire hydrant with concrete; provide copper pipe to weep holes as required for positive drainage. For Buttress dimensions see standard detail W-8 Buttress for Caps.
8. Clear all poles by 2'-0" minimum or tunnel as required. Clear all existing utilities by 6" minimum.
9. All 6", 8" and 12" water mains shall be cast iron or ductile iron pipe.
10. Cost of Friction Blocks and Erosion Checks to be included in the Unit Price Bid for furnishing and laying water mains.
11. To construct concrete blocking for water mains in Part 'A' of this contract, increase all dimensions shown in the standard details by 2".
12. Cost of strapping Fire Hydrant to be included in the Unit Price Bid for excavation and backfill of water mains.



*James M. [Signature]*  
College Avenue  
PART B

WHITMAN, REQUARDT & ASSOCIATES ENGINEERS 1304 ST. PAUL ST. BALTIMORE, MARYLAND	HOWARD COUNTY METROPOLITAN COMMISSION 11-8-66 DATE	CONTRACT NO. 134-W CHIEF ENGINEER	PLAN AND PROFILE OF WATER MAINS	ELECTION DISTRICT ELLICOTT CITY NO. 2	DRAWING NO. 2 OF 4 SCALE AS SHOWN
---	--	--------------------------------------	------------------------------------	--	--------------------------------------

WS 134-W/2



Main Street to College Avenue  
PART 'A'  
Contract No. 134-W

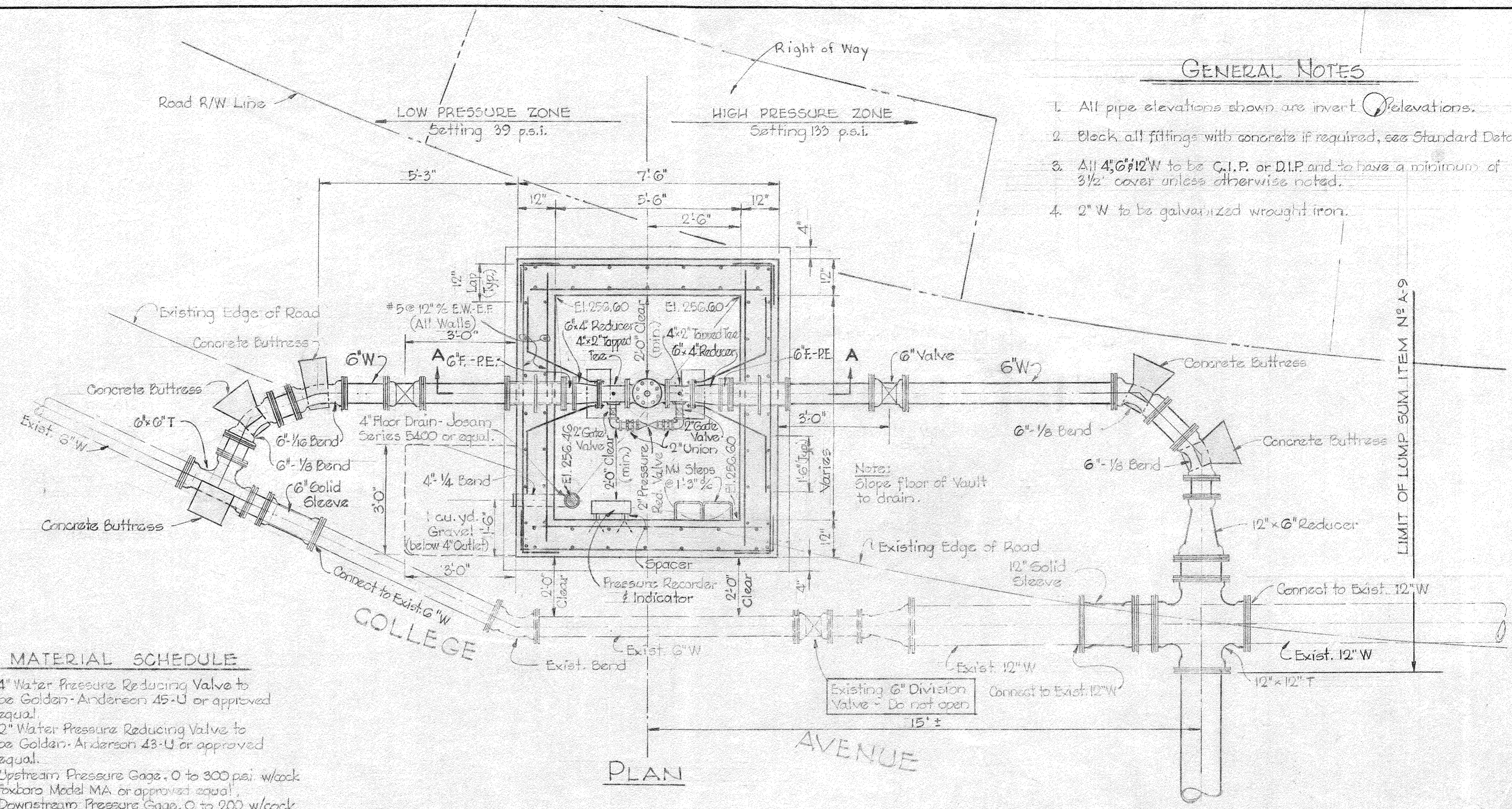
1	12-9-66	Fire Hydrant tee added
N <sup>o</sup>	Date	Revision

WHITMAN, REQUARDT & ASSOCIATES ENGINEERS 1304 ST. PAUL ST. BALTIMORE, MARYLAND	HOWARD COUNTY METROPOLITAN COMMISSION 11-8-66 DATE W. O. Webb CHIEF ENGINEER	CONTRACT NO. 134-W	PROFILES OF WATER MAINS	ELECTION DISTRICT ELLCOTT CITY NO. 2	DRAWING NO. 3 OF 4	SCALE H-1"=100' V-1"=10'
---	--	--------------------	----------------------------	---	--------------------------	--------------------------------

WS 134-w/3

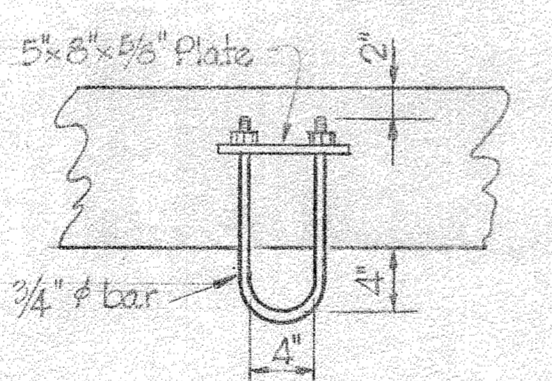
**GENERAL NOTES**

1. All pipe elevations shown are invert elevations.
2. Block all fittings with concrete if required, see Standard Details.
3. All 4" & 6" 12" W to be C.I.P. or D.I.P. and to have a minimum of 3/2" cover unless otherwise noted.
4. 2" W to be galvanized wrought iron.



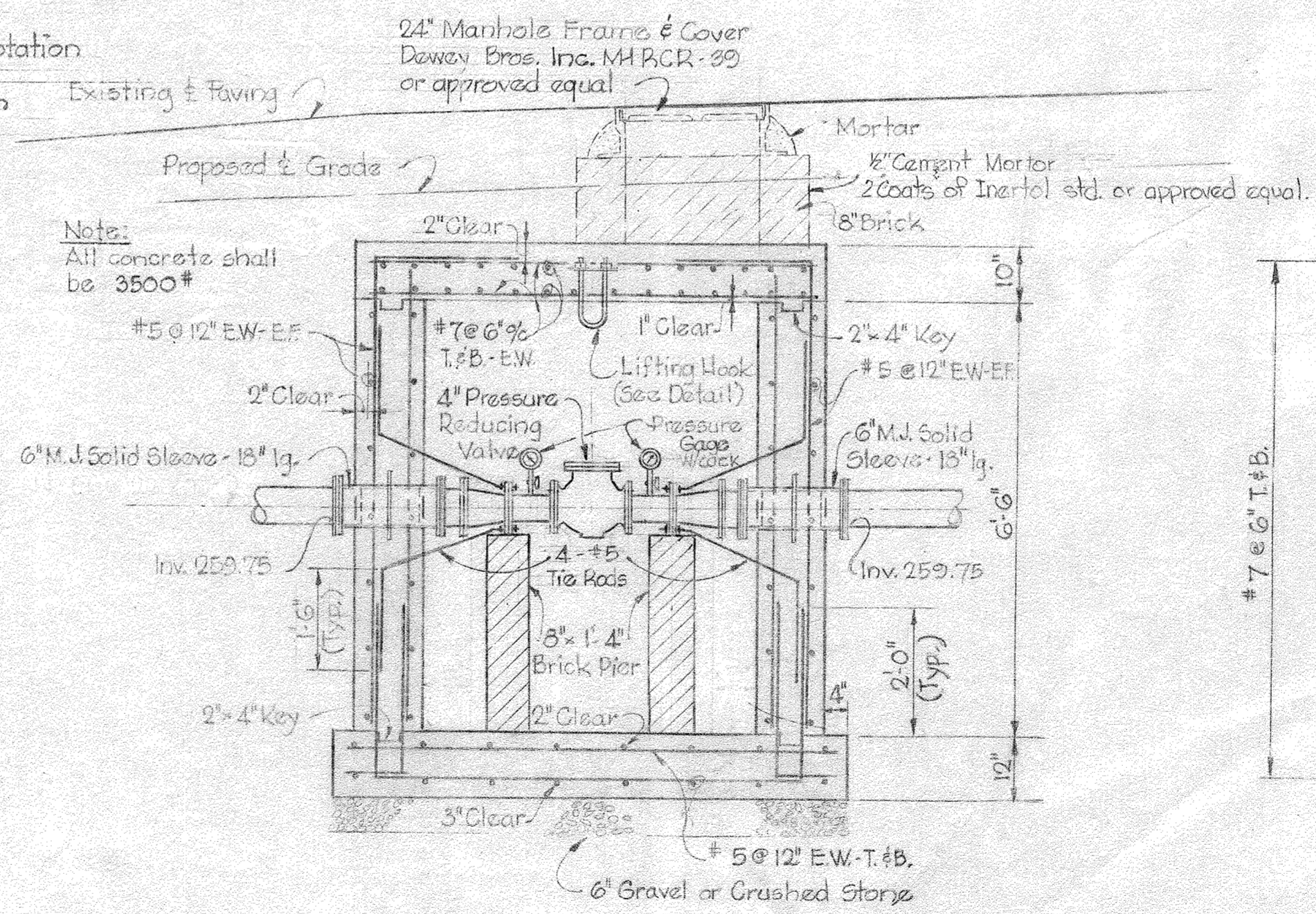
**MATERIAL SCHEDULE**

1. 4" Water Pressure Reducing Valve to be Golden-Anderson 45-U or approved equal.
2. 2" Water Pressure Reducing Valve to be Golden-Anderson 43-U or approved equal.
3. Upstream Pressure Gage, 0 to 300 psi w/cock Foxboro Model MA or approved equal.
4. Downstream Pressure Gage, 0 to 200 w/cock Foxboro Model MA or approved equal.
5. Pressure Recorder, 0 to 200 psi, w/cock 7 day rotation 7 day wind, Foxboro 12-R PB-AE, Indicating Segmental Scale, submersible construction with vinyl coating or approved equal.

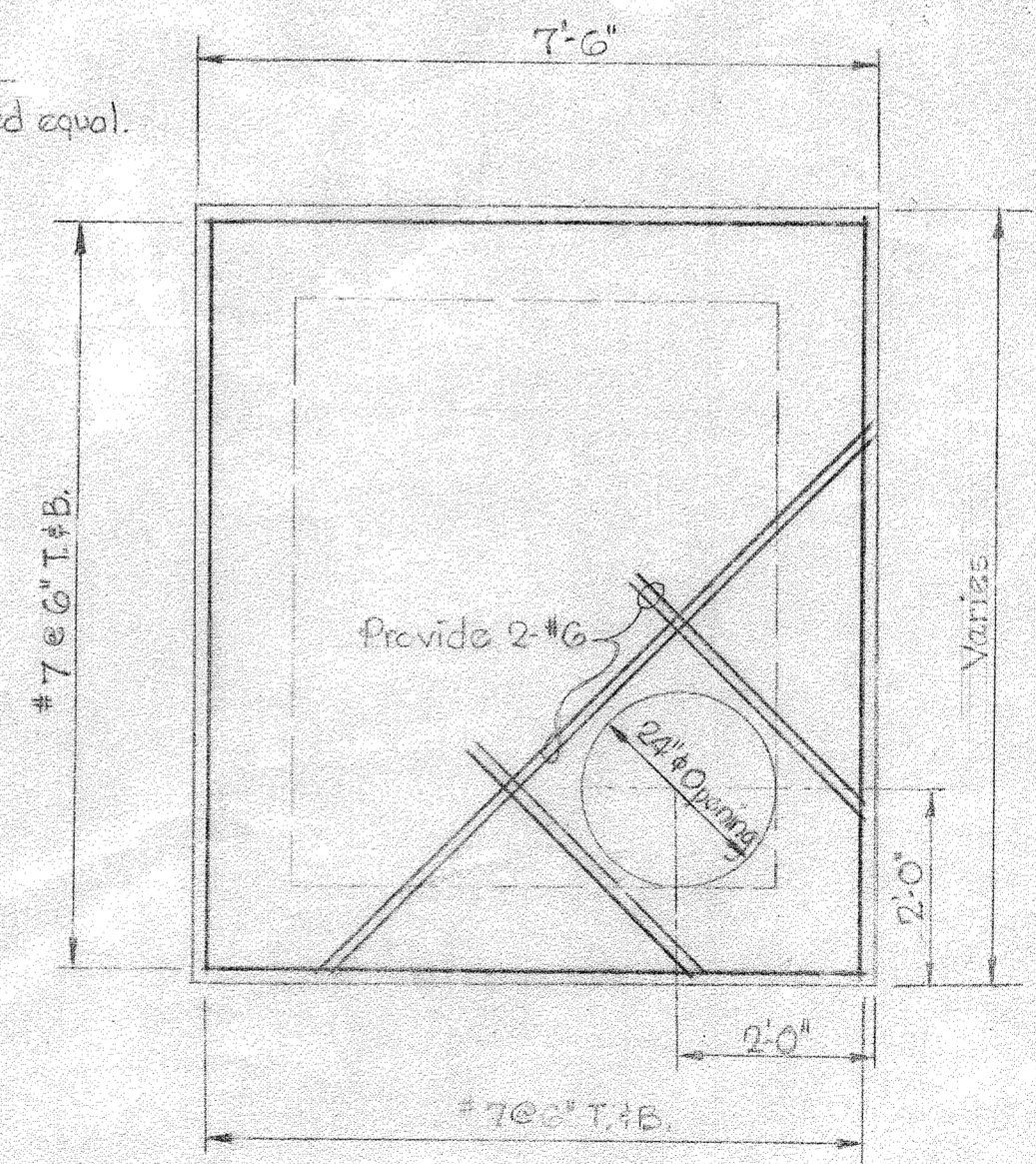


Note:  
Assembly shall be hot dip galvanized.  
Lifting Hook to be centered over Pressure Reducing Valve.

**LIFTING HOOK DETAIL**  
Scale: 1/2" = 1'-0"



**SECTION "A-A"**



**PLAN - TOP SLAB**

**4" PRESSURE REDUCING VALVE VAULT**

Scale: 1/2" = 1'-0"



*Howard J. McNeil*  
PART "A"  
Contract 134-W

WS 134-W/4

WHITMAN, REQUARDT & ASSOCIATES ENGINEERS 1304 ST. PAUL ST. BALTIMORE, MARYLAND	HOWARD COUNTY METROPOLITAN COMMISSION DATE: 11-8-66 CHIEF ENGINEER: <i>W. J. McNeil</i>	CONTRACT NO. 134-W	DETAILS	ELECTION DISTRICT ELLICOTT CITY NO. 2	DRAWING NO. 4 OF 4 SCALE AS SHOWN
---	---	--------------------	---------	--	--------------------------------------