

CONTRACT 127-W
WATER MAIN EXTENSIONS
HOWARD COUNTY METROPOLITAN COMMISSION
ELLICOTT CITY, MARYLAND



[Handwritten Signature]

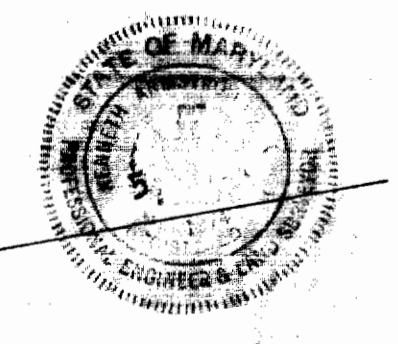
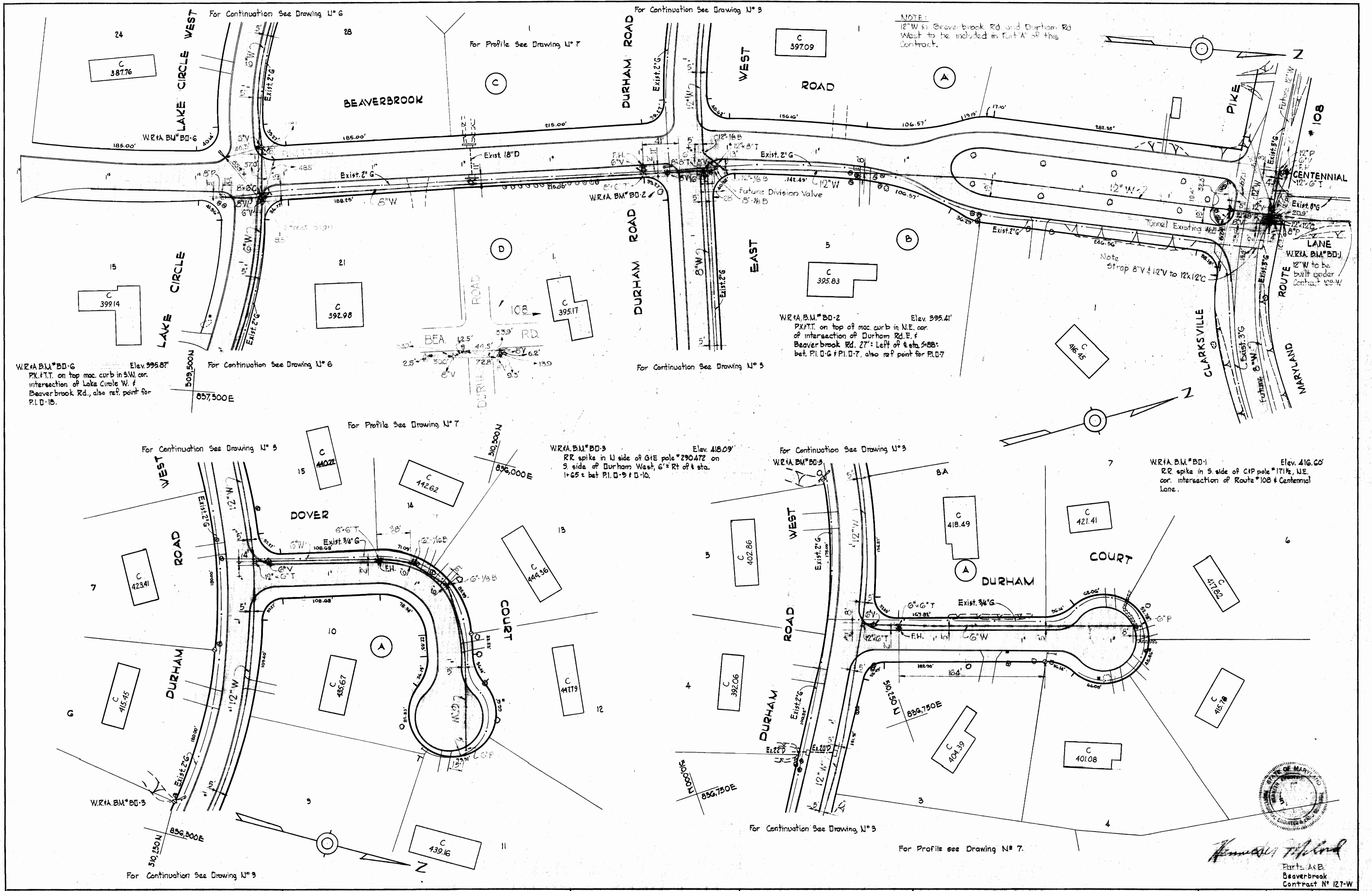
Beaverbrook
Contract NR 127W

WHITMAN, REQUARDT & ASSOCIATES ENGINEERS 1304 ST. PAUL ST. BALTIMORE, MARYLAND	HOWARD COUNTY METROPOLITAN COMMISSION _____ <small>DATE</small> <small>CHIEF ENGINEER</small>	CONTRACT NO. <u>127-W</u>	LOCATION MAP OF WATER MAIN EXTENSIONS	ELECTION DISTRICT CLARKVILLE NO. 5	DRAWING NO. <u>1</u> OF <u>8</u>	SCALE AS SHOWN
---	---	---------------------------	---	--	--	----------------------

W. O. 5962-2

19 JUNE 67

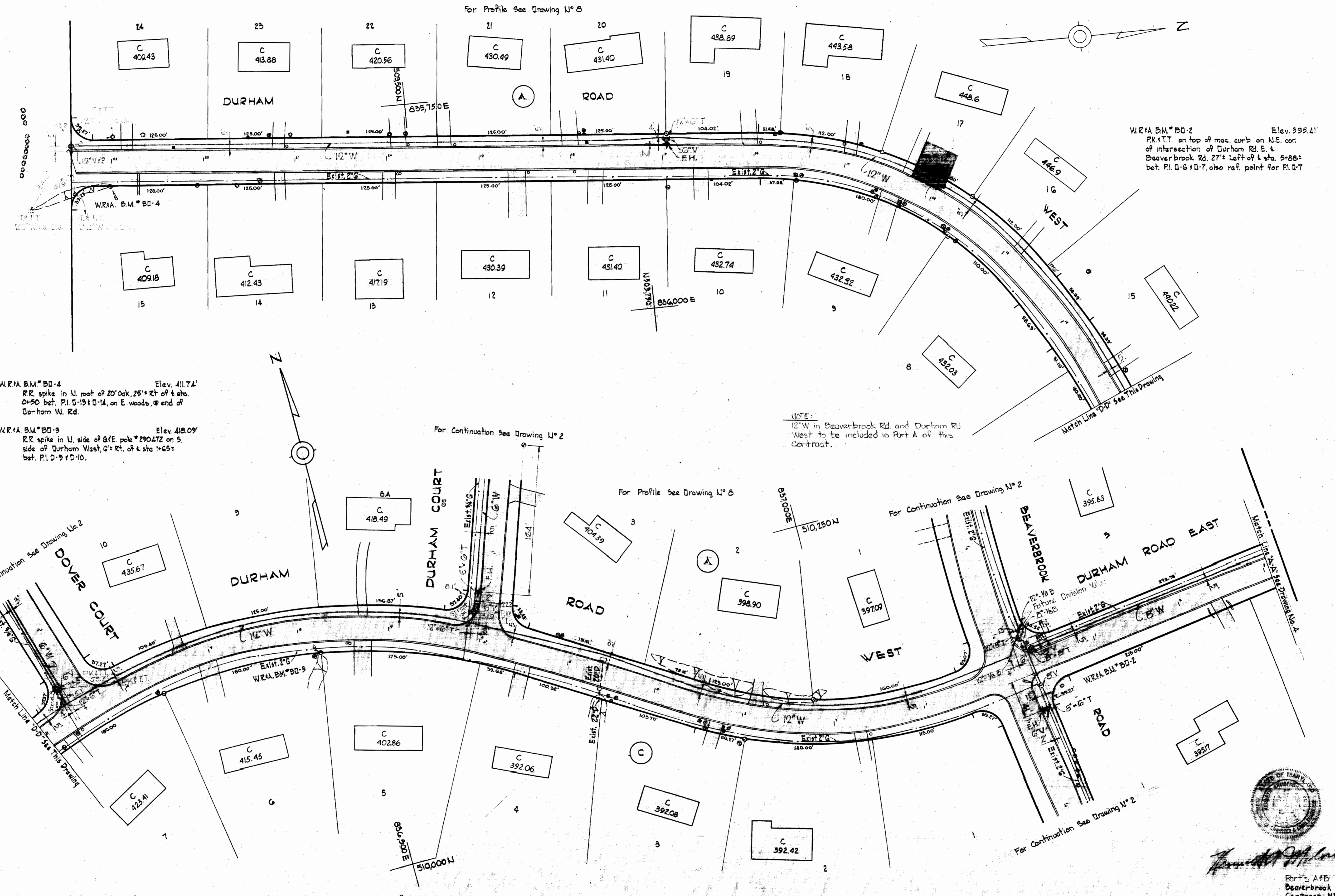
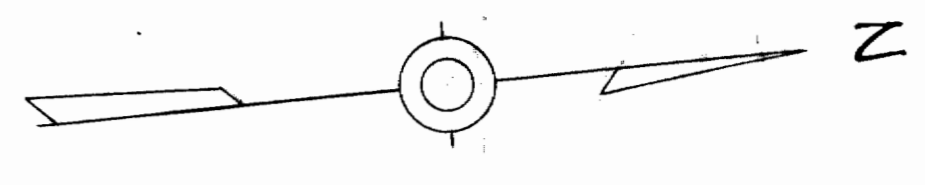
WS 127-W/1



Howard T. Dillard
Parts A & B
Beaverbrook
Contract N° 127-W

WHITMAN, REQUARDT & ASSOCIATES ENGINEERS 1304 ST. PAUL ST. BALTIMORE, MARYLAND	HOWARD COUNTY METROPOLITAN COMMISSION DATE _____ CHIEF ENGINEER _____	CONTRACT NO. 127-W	PLAN OF WATER MAINS	ELECTION DISTRICT CLARKSVILLE NO. 5	DRAWING NO. 2 OF 8 SCALE 1"=50' <small>500'-ETS 500'-ETS 510'-ETS</small>
---	--	--------------------	------------------------	--	---

WS 127-W/2



W.R.A. B.M. # BD-2 Elev. 395.41'
P.K.T.T. on top of mac. curb on N.E. cor.
of intersection of Durham Rd. E. &
Beaverbrook Rd. 27'± Left of & sta. 5+85±
bet. P.I. D-6 & D-7, also ref. point for P.I. D-7

W.R.A. B.M. # BD-4 Elev. 411.74'
R.R. spike in N. root of 20\"/>

W.R.A. B.M. # BD-3 Elev. 418.09'
R.R. spike in N. side of GfE pole # 290472 on S.
side of Durham West, G± Rt. of & sta. 1+65±
bet. P.I. D-9 & D-10.

NOTE:
12\"/>

WHITMAN, REQUARDT & ASSOCIATES
ENGINEERS
1304 ST. PAUL ST.
BALTIMORE, MARYLAND

HOWARD COUNTY METROPOLITAN COMMISSION
DATE _____ CHIEF ENGINEER _____

CONTRACT NO. 127-W

PLAN OF
WATER MAINS

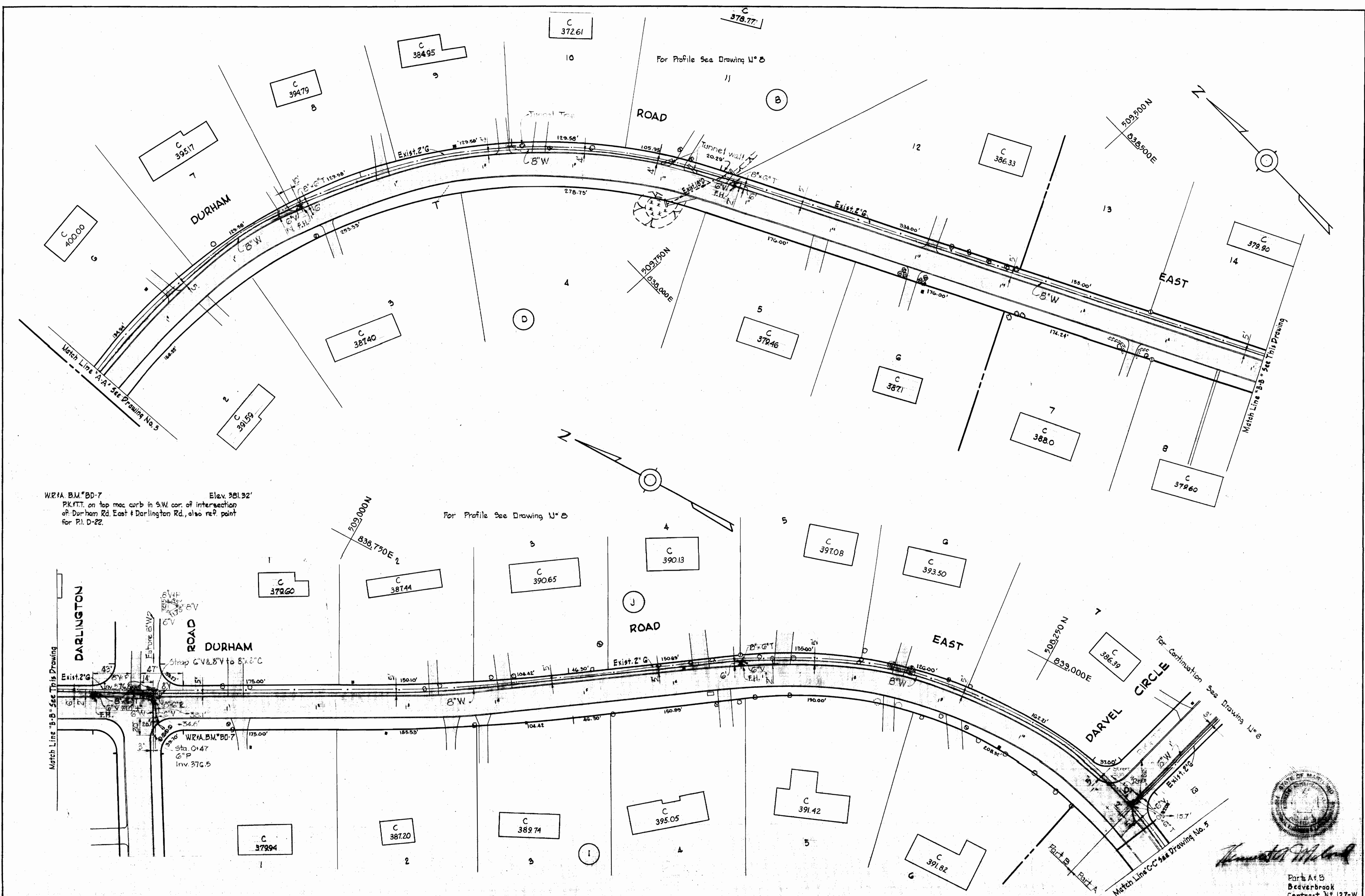
ELECTION DISTRICT
CLARKSVILLE NO. 5

DRAWING NO. 3 OF 8
SCALE 1\"/>



Howard M. ...
Part's A & B
Beaverbrook
Contract N° 127-W

WS 127-W/3



W.R.I.A. B.M. #BD-7 Elev. 381.92'
 P.K. PT. on top mac curb in S.W. cor. of intersection
 of Durham Rd. East & Darlington Rd. also ref. point
 for P.I. D-22.

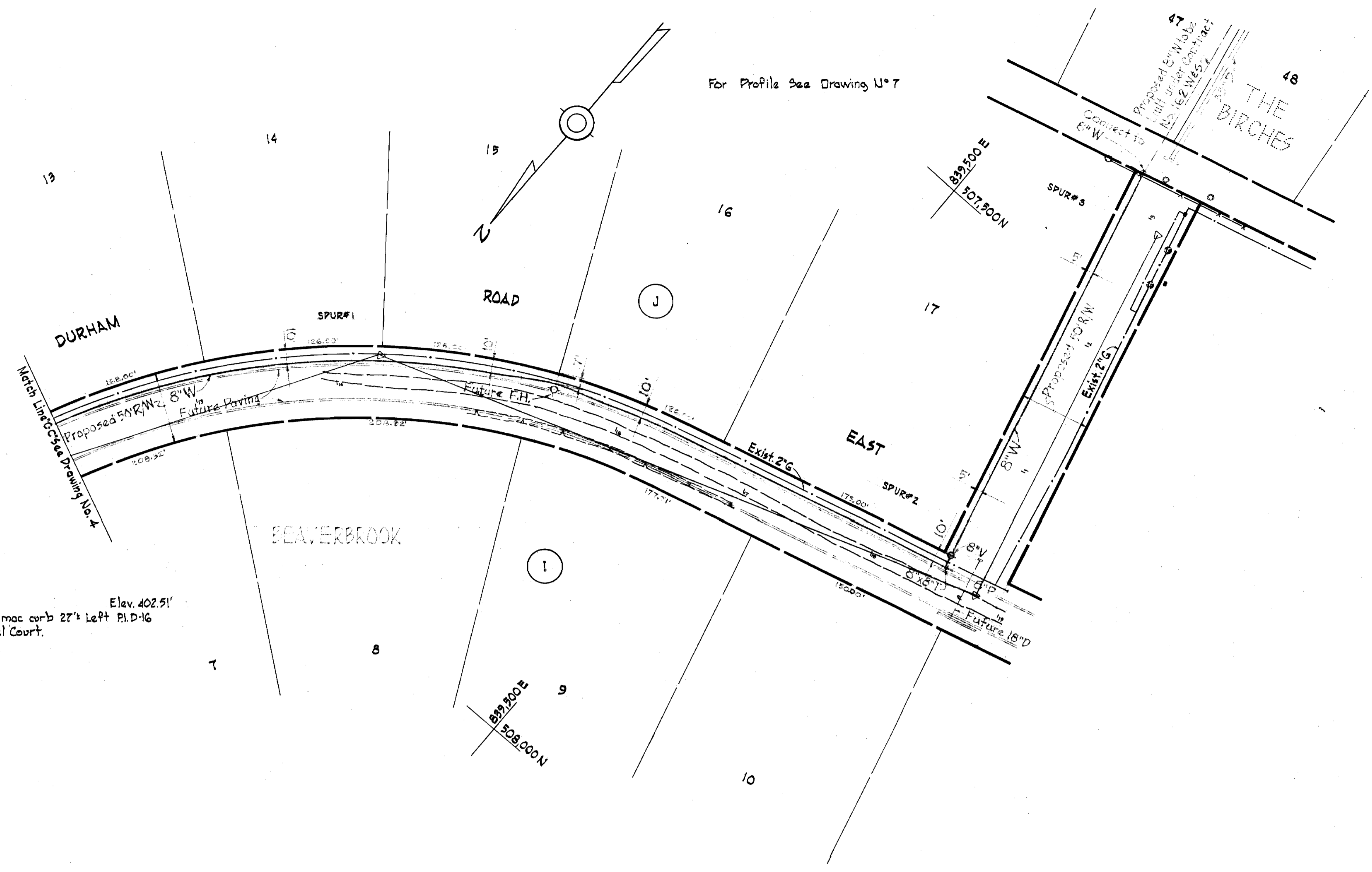
DARLINGTON ROAD
 DURHAM ROAD
 W.R.I.A. B.M. #BD-7
 Sta. 0+47
 6" P
 Inv. 376.5

WHITMAN, REQUARDT & ASSOCIATES ENGINEERS 1304 ST. PAUL ST. BALTIMORE, MARYLAND	HOWARD COUNTY METROPOLITAN COMMISSION DATE _____ CHIEF ENGINEER _____	CONTRACT NO. <u>127-W</u>	PLAN OF WATER MAINS	ELECTION DISTRICT CLARKSVILLE NO. 5	DRAWING NO. <u>4</u> OF <u>8</u> SCALE 1" = 50' <small>207-480 208-180 209-112, 209-182 210-019</small>
---	--	---------------------------	------------------------	--	---

W.O. 5562-2

19 JUNE 67 F.B. 9697

WS 127-w/4



For Profile See Drawing U*7

GENERAL NOTES

1. Approximate location of existing mains are shown. The Contractor shall take all necessary precautions to protect existing mains and services and maintain uninterrupted supply. Any damage incurred shall be repaired immediately.
2. All pipe elevations shown are invert elevations.
3. The Contractor shall locate existing utilities a minimum of two weeks in advance of construction operations in vicinity of utilities.
4. For all standard details see standards bound in Specifications.
5. All water mains to be C.I.P. or D.I.P. and have a minimum of 3 1/2' cover.
6. Block all fittings with concrete, see standard detail bound in Specifications.
7. Bury line elevation on fire hydrants shall be set the same as edge of paving, top of curb, or as directed by the Engineer in the field.
8. All Fire Hydrants shall be buttressed with concrete in accordance with Standard Detail W-4.
9. Clear all utilities by a minimum of 6". Clear all poles by 2'-0" minimum or tunnel as required.
10. Cost of strapping Valve's to Tee's to be included in the unit price bid for furnishing and laying of water mains.
11. All depressed manholes that are disturbed during construction must be replaced to their original condition.

W.R. & A. B.M. * BD-8 Elev. 402.51'
 P.K. 111.1 on top mac curb 27'± Left P.I.D. 16
 @ end of Darzel Court.



Signature

Part A
 Beaverbrook
 Contract No. 127-W

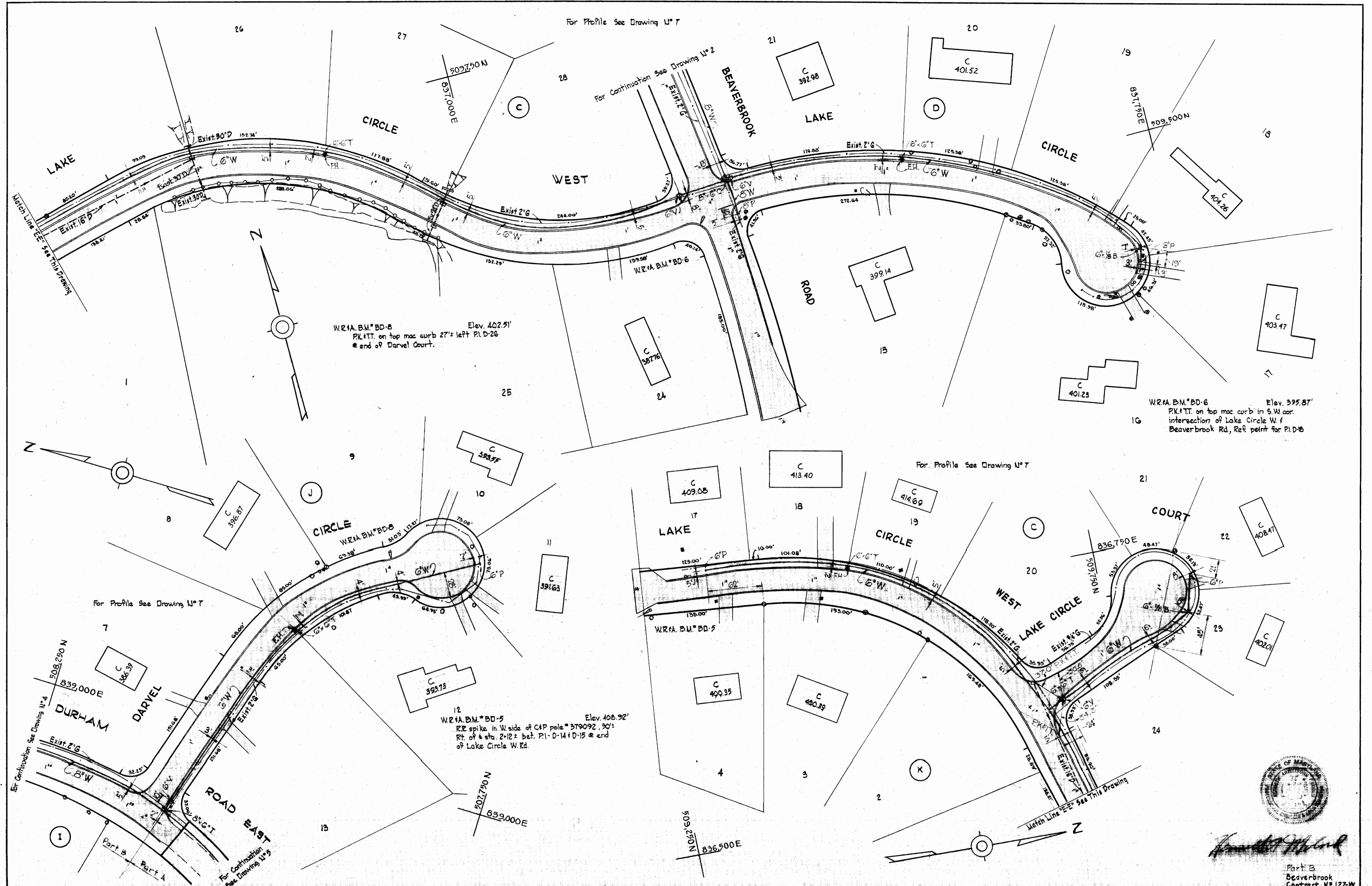
WHITMAN, REQUARDT & ASSOCIATES ENGINEERS 1304 ST. PAUL ST. BALTIMORE, MARYLAND	HOWARD COUNTY METROPOLITAN COMMISSION _____ DATE _____ CHIEF ENGINEER	CONTRACT NO. 127-W	PLAN OF WATER MAINS	ELECTION DISTRICT CLARKSVILLE NO. 5	DRAWING NO. 5 OF 8	SCALE 1" = 50'
--	--	---------------------------	---	---	---	------------------------------------

W. O. 5962-2

AS BUILT 19 JUNE 67

WS 127-W/5

WS 127-W/6



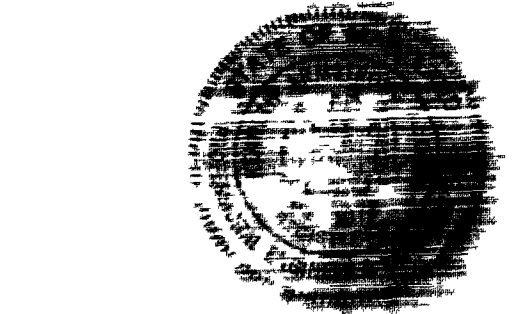
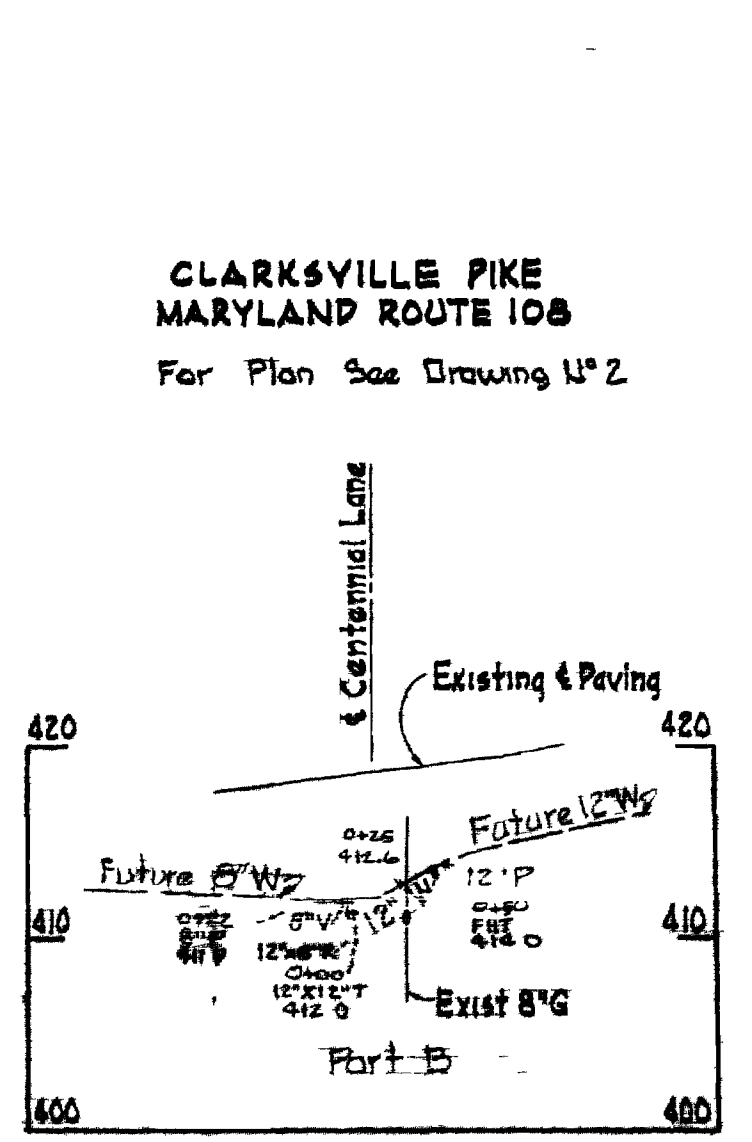
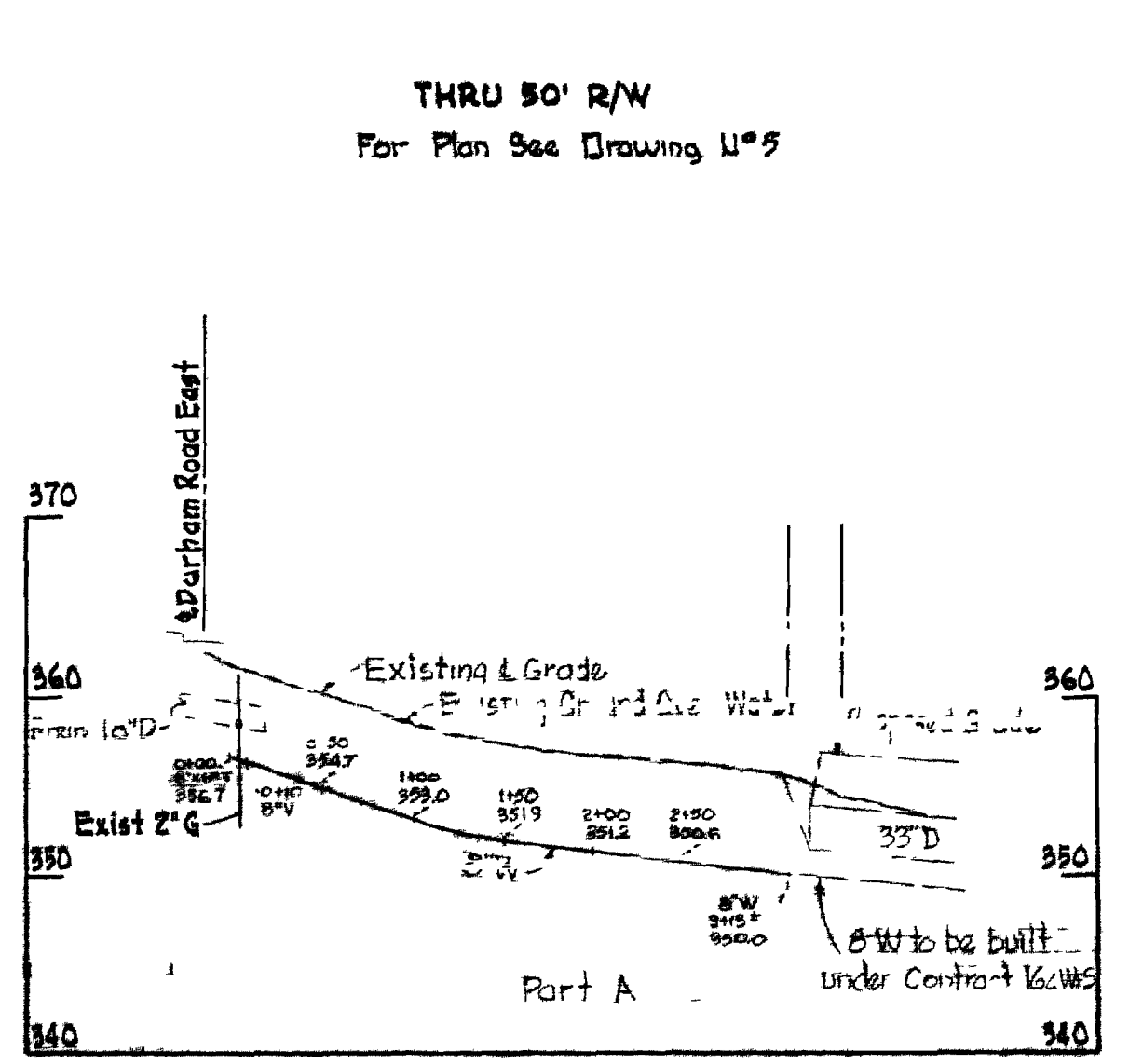
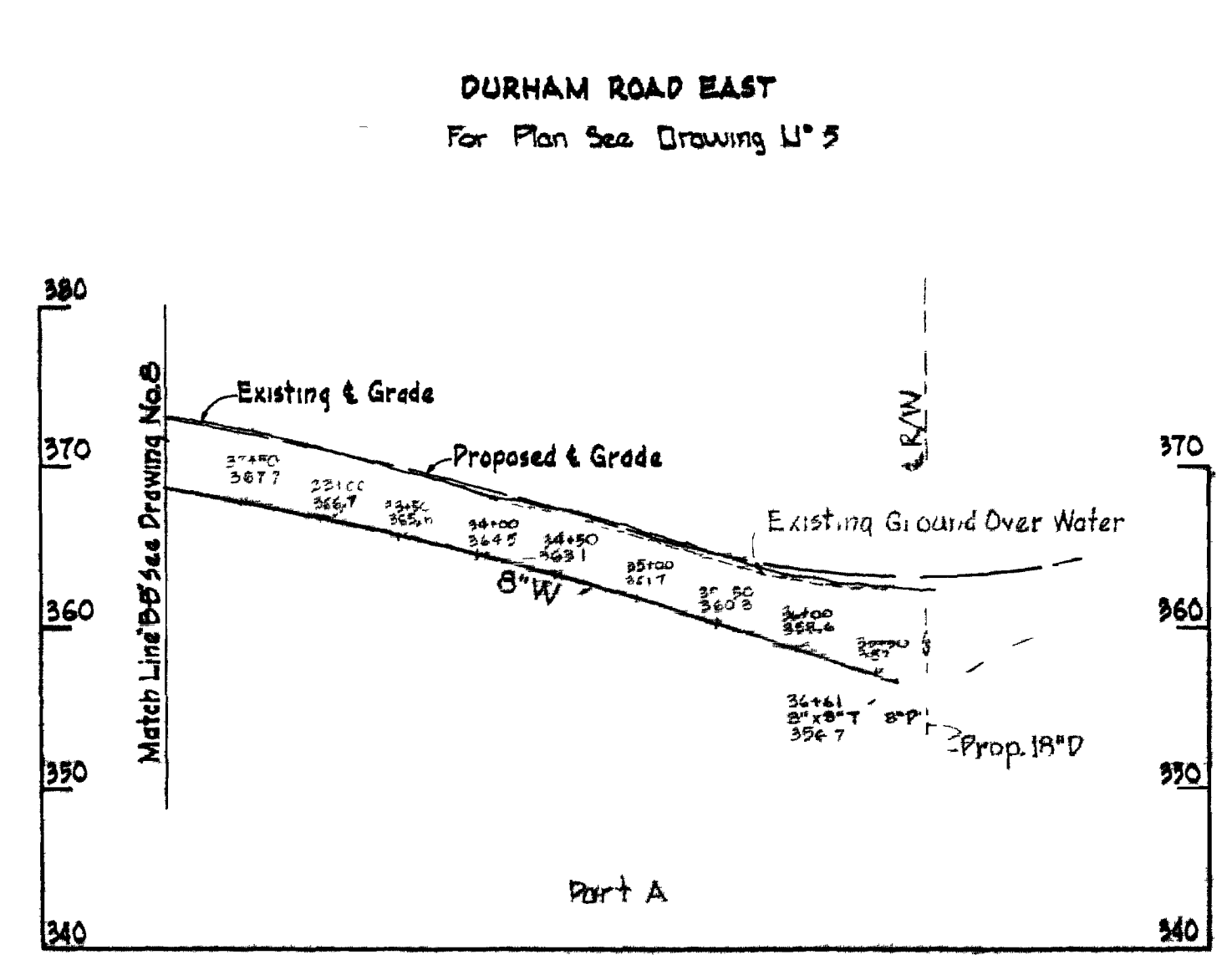
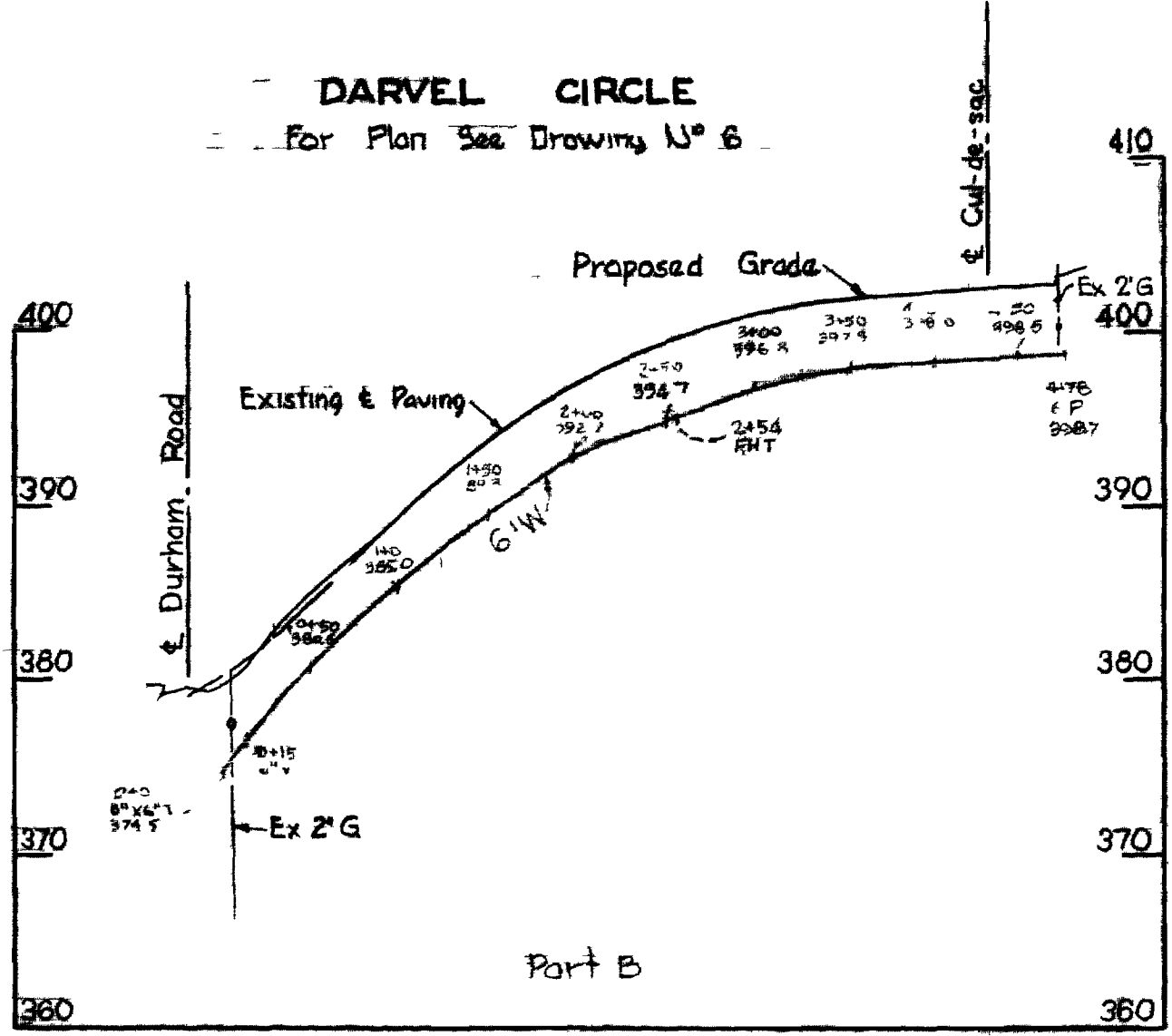
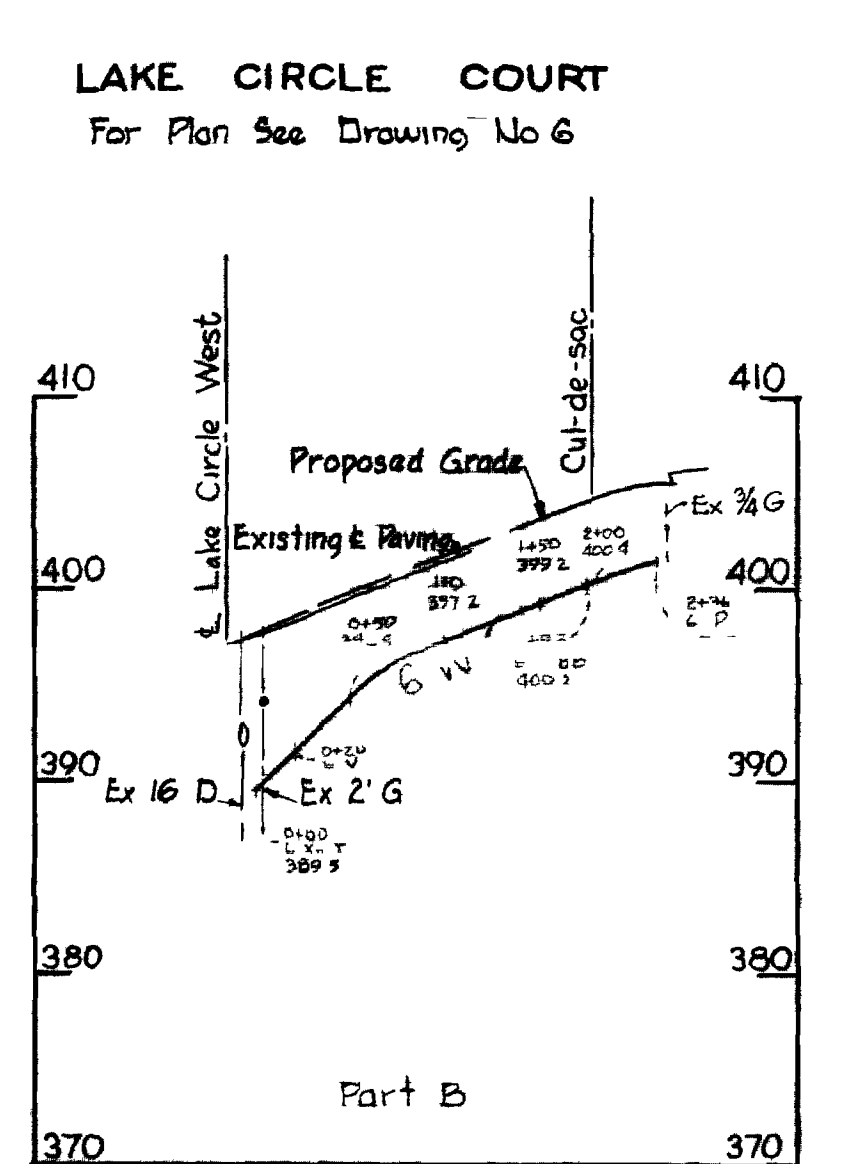
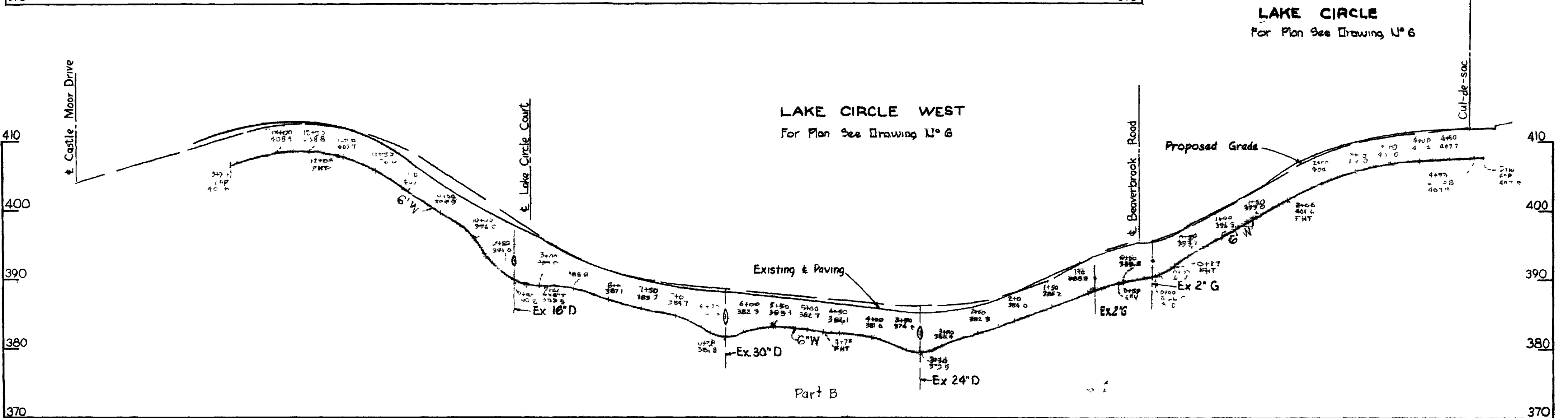
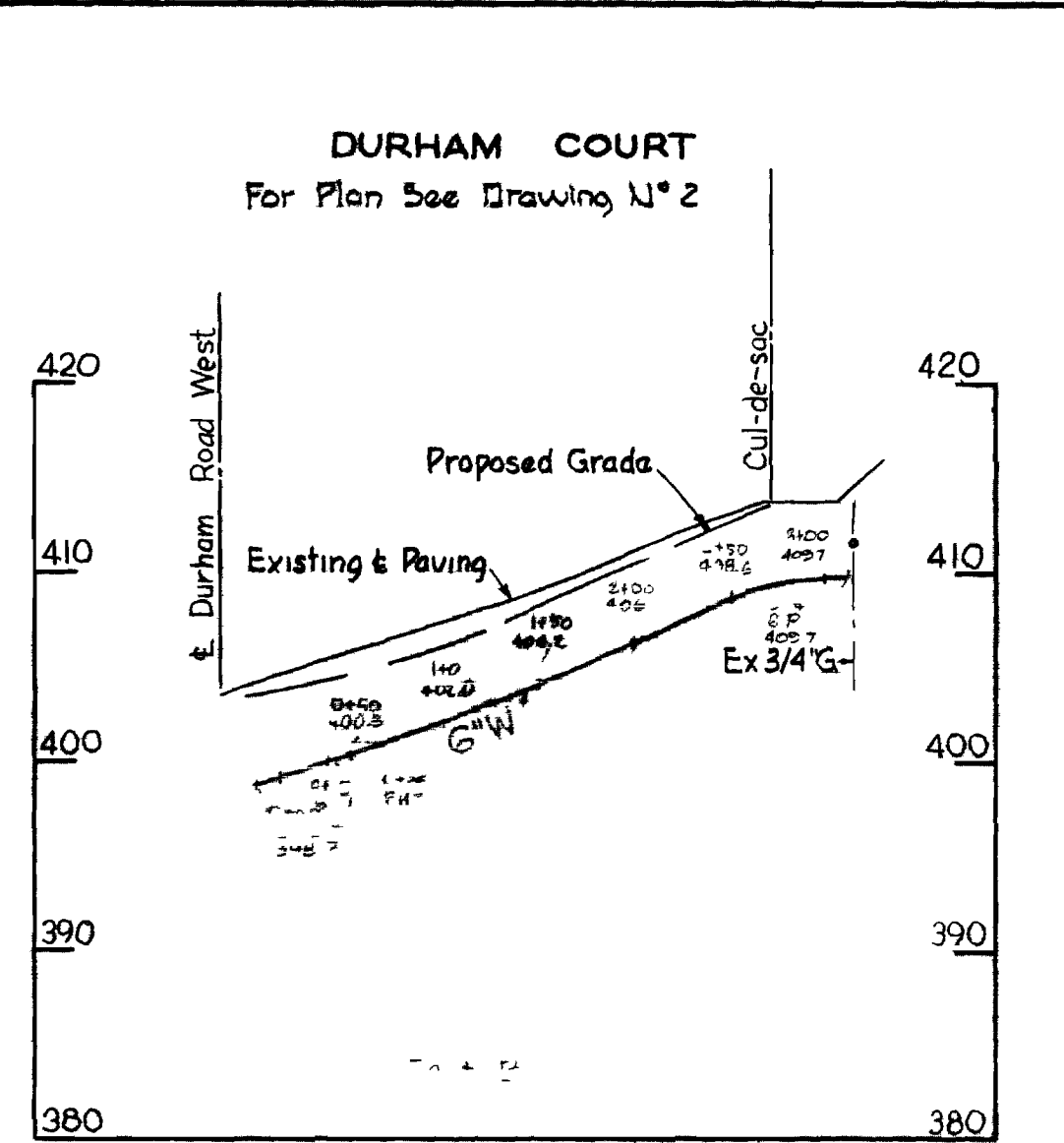
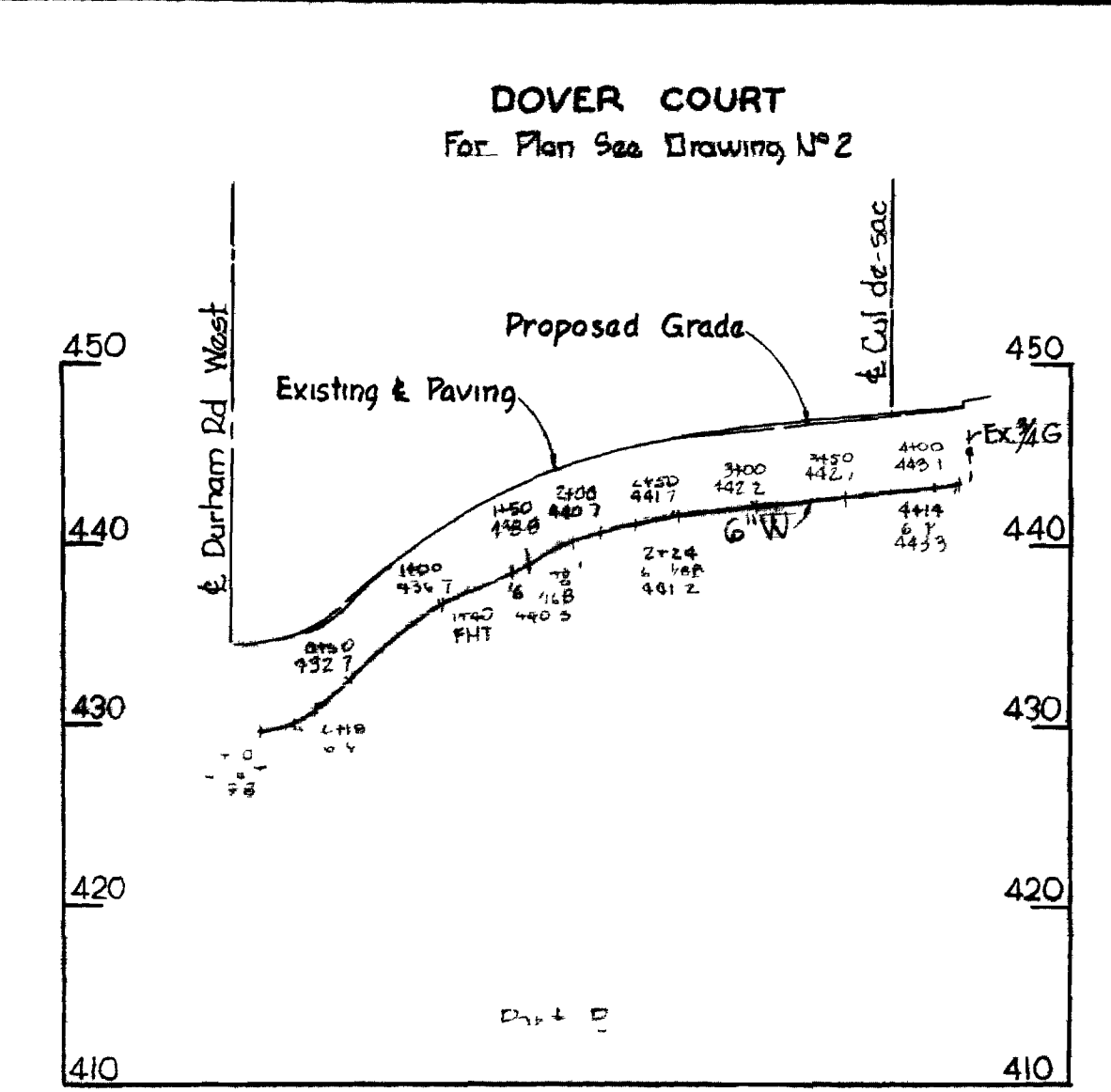
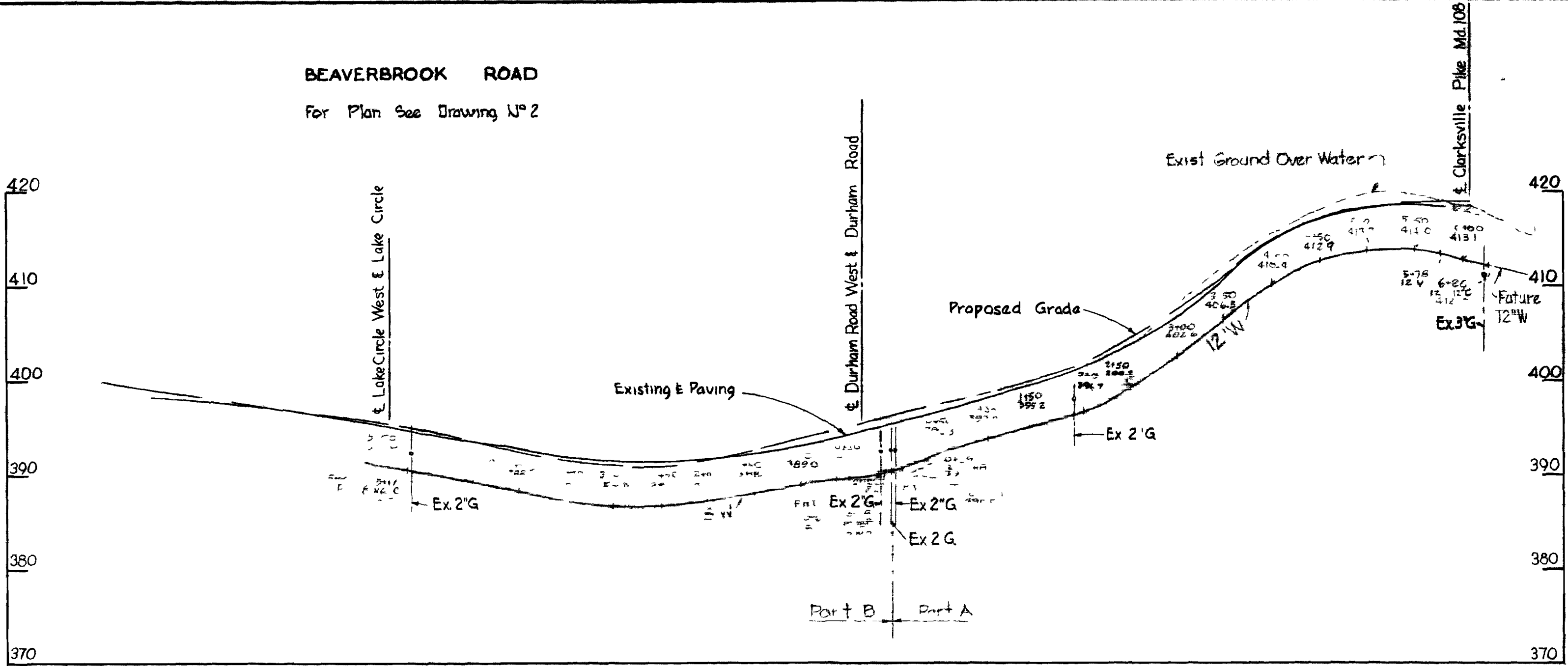
Handwritten Signature

Part B
Beaverbrook
Contract N° 127-W

WHITMAN, REQUARDT & ASSOCIATES ENGINEERS 1304 ST. PAUL ST. BALTIMORE, MARYLAND	HOWARD COUNTY METROPOLITAN COMMISSION DATE _____ CHIEF ENGINEER _____	CONTRACT NO. 127-W	PLAN OF WATER MAINS	ELECTION DISTRICT CLARKVILLE NO. 5	DRAWING NO. 6 OF 8 SCALE 1"=50' <small>187-480 205-480 209-478 209-477</small>
---	--	--------------------	------------------------	---------------------------------------	--

W. O. 5562-2

19 JUNE 67 F.B. 9697



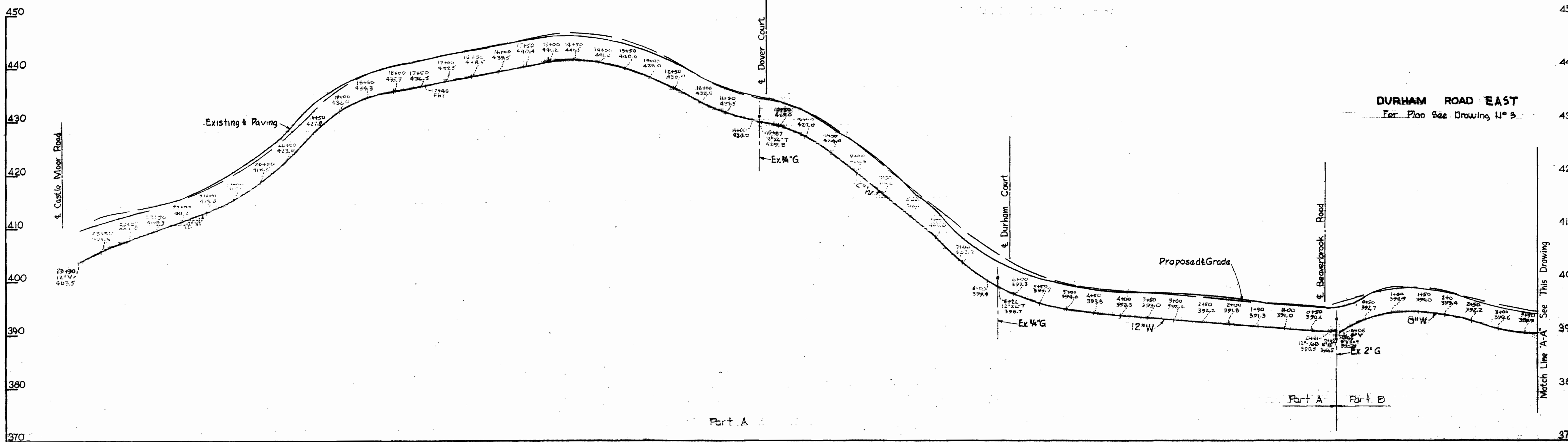
WHITMAN, REQUARDT & ASSOCIATES ENGINEERS 1304 ST PAUL ST BALTIMORE, MARYLAND	HOWARD COUNTY METROPOLITAN COMMISSION DATE _____ CHIEF ENGINEER _____	CONTRACT NO. 127-W	PROFILES OF WATER MAINS	ELECTION DISTRICT CLARKSVILLE NO 5	DRAWING NO. 7	SCALE H-1"=100'
					OF 8	V-1"=10'

W.O. 5562-2

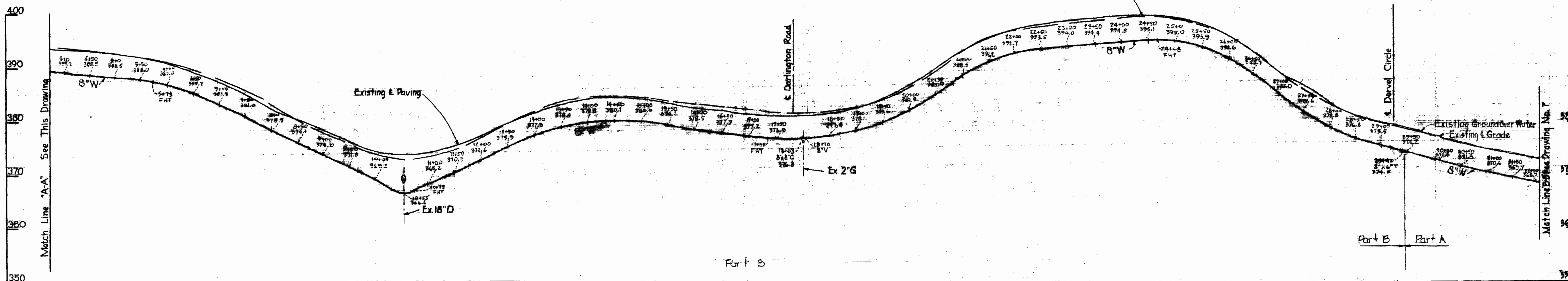
AS BUILT 19 JUNE 67

WS 127-W/7

DURHAM ROAD WEST
For Plan See Drawing N° 5



DURHAM ROAD EAST
For Plan See Drawing N° 5



Beaverbrook
Contract N° 127-W

WHITMAN, REQUARDT & ASSOCIATES
ENGINEERS
1304 ST. PAUL ST.
BALTIMORE, MARYLAND

HOWARD COUNTY METROPOLITAN COMMISSION
DATE: _____ CHIEF ENGINEER: _____

CONTRACT NO. 127-W

PROFILES OF
WATER MAINS

ELECTION DISTRICT
CLARKSVILLE NO. 5

DRAWING NO. 8 OF 8 SCALE H-1"=100' V-1"=10'

W. O. 5562-2

JUNE 67

WS 127-W/8