

CONTRACT 121-S
LITTLE PATUXENT RIVER INTERCEPTOR
HOWARD COUNTY METROPOLITAN COMMISSION
ELLICOTT CITY, MARYLAND



Kenneth G. Johnson

CONTRACT NO. 121-S

WHITMAN, REQUARDT & ASSOCIATES ENGINEERS 1304 ST. PAUL ST. BALTIMORE, MARYLAND	HOWARD COUNTY METROPOLITAN COMMISSION DATE <u>5-12-66</u> <i>W.O. Leland</i> CHIEF ENGINEER	CONTRACT NO. <u>121-S</u>	LOCATION MAP	LITTLE PATUXENT RIVER INTERCEPTOR SECTION NO. 4	DRAWING NO. <u>1</u> OF <u>7</u>	SCALE AS SHOWN
---	---	---------------------------	--------------	--	-------------------------------------	----------------

W. O. 5651

19 JUNE 1967

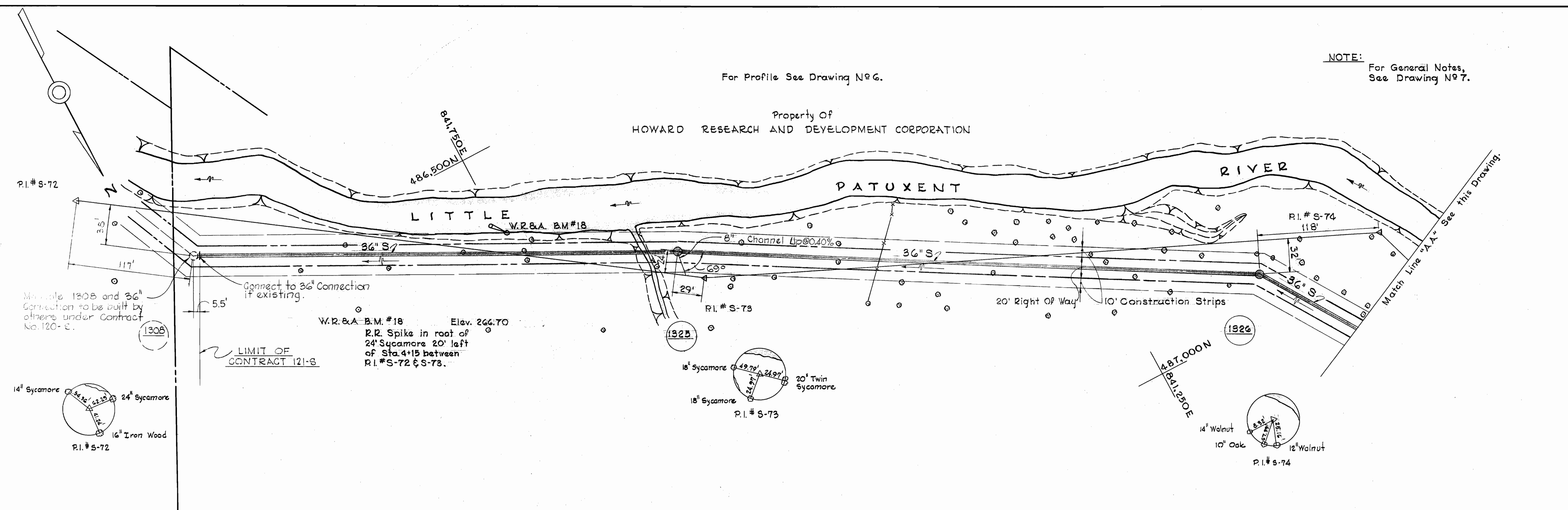
WHITMAN

WS 121-S/1

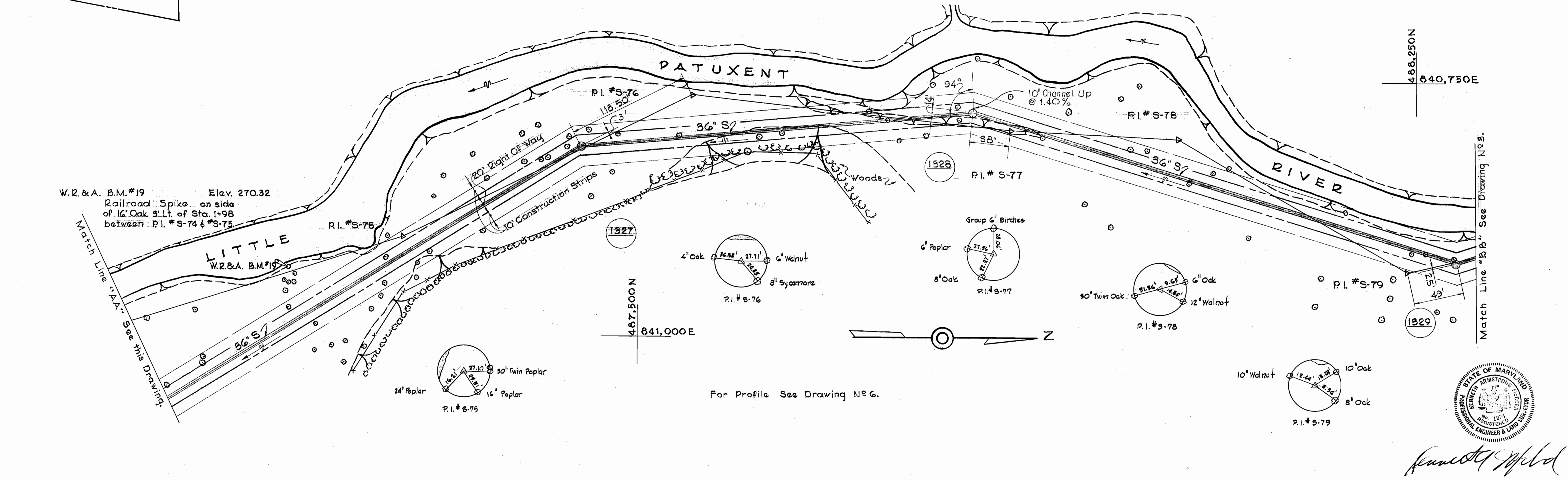
NOTE:
For General Notes,
See Drawing N97.

For Profile See Drawing N96.

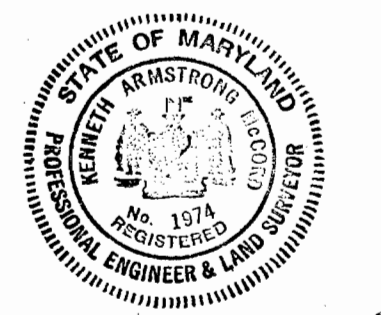
Property Of
HOWARD RESEARCH AND DEVELOPMENT CORPORATION



Property Of
HOWARD RESEARCH AND DEVELOPMENT CORPORATION



For Profile See Drawing N96.



Kenneth Armstrong
Contract No 121-S

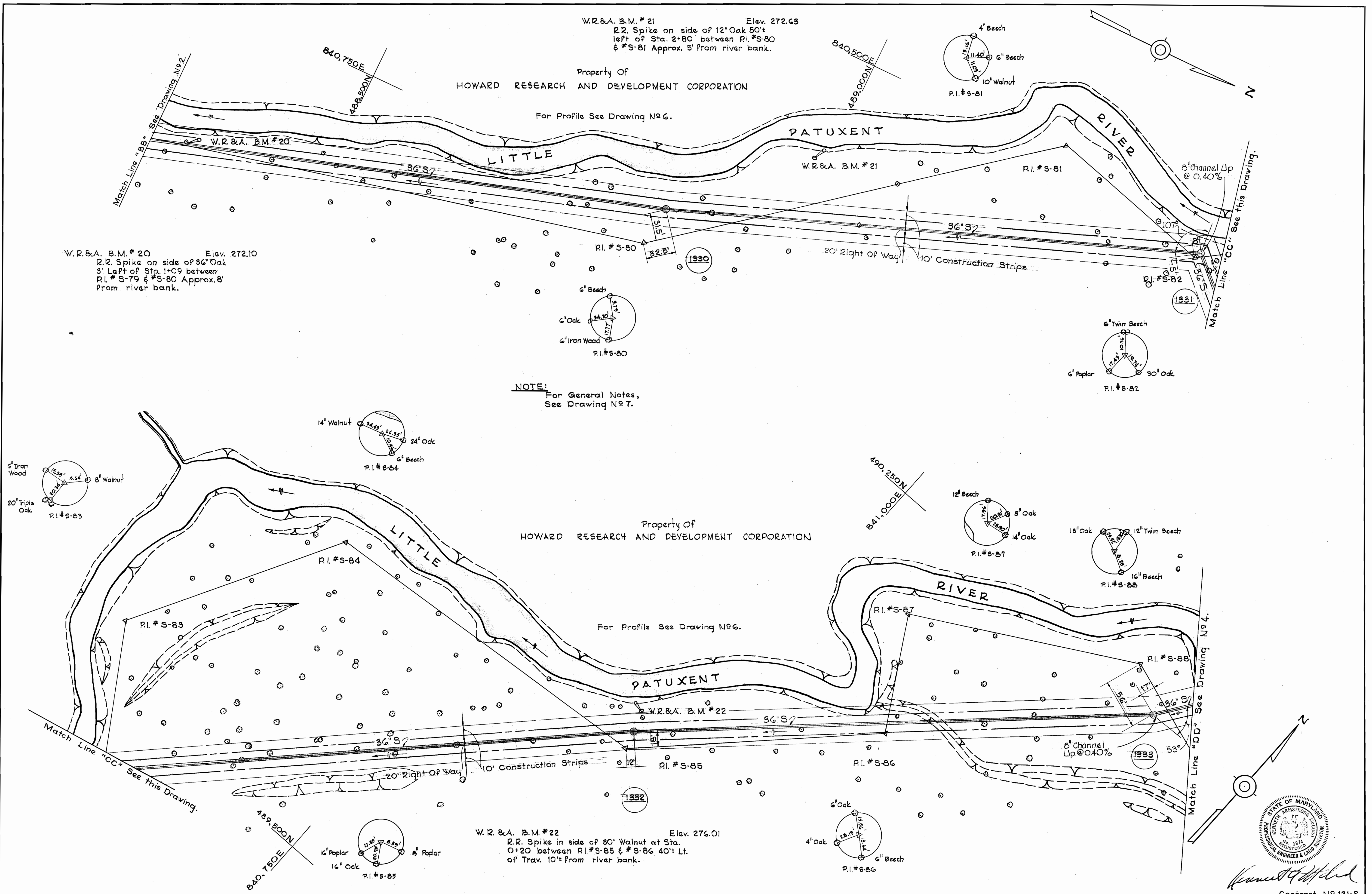
WHITMAN, REQUARDT & ASSOCIATES ENGINEERS 1304 ST. PAUL ST. BALTIMORE, MARYLAND	HOWARD COUNTY METROPOLITAN COMMISSION DATE <u>5-12-66</u> <i>W.O. Elliott</i> CHIEF ENGINEER	CONTRACT NO. 121-S	PLAN OF SEWER MAINS	LITTLE PATUXENT RIVER INTERCEPTOR SECTION NO. 4	DRAWING NO. <u>2</u> OF <u>7</u> SCALE 1" = 50' <small>488-481 487-481 486-481</small>
---	--	--------------------	------------------------	--	--

W. O. 5651

19 JUNE 1967 AS BUILT F.B. 3504 F.B. 3512

WS 121-S/2

WS 121-S/3



W.R.&A. B.M.#20 Elev. 272.10
 R.R. Spike on side of 36" Oak
 3' Left of Sta. 1+09 between
 P.I.#S-79 & #S-80 Approx. 8'
 from river bank.

W.R.&A. B.M.#21 Elev. 272.63
 R.R. Spike on side of 12" Oak 50'
 left of Sta. 2+80 between P.I.#S-80
 & #S-81 Approx. 5' from river bank.

Property Of
 HOWARD RESEARCH AND DEVELOPMENT CORPORATION

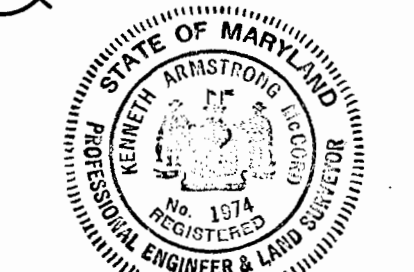
For Profile See Drawing No 6.

NOTE:
 For General Notes,
 See Drawing No 7.

Property Of
 HOWARD RESEARCH AND DEVELOPMENT CORPORATION

For Profile See Drawing No 6.

W.R.&A. B.M.#22 Elev. 276.01
 R.R. Spike in side of 30" Walnut at Sta.
 0+20 between P.I.#S-85 & #S-86 40' Lt.
 of Trav. 10' from river bank.

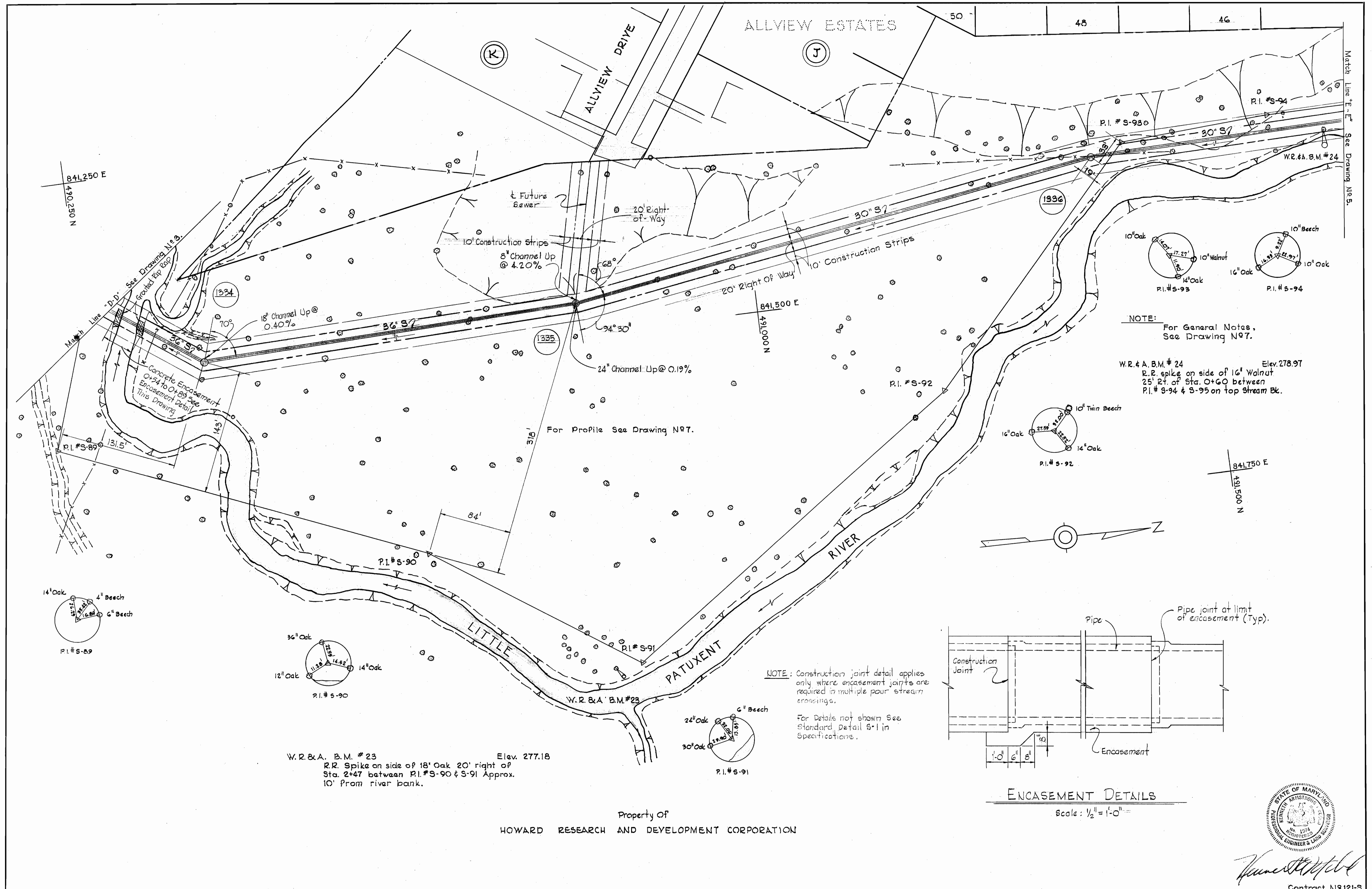


Kenneth Armstrong
 Contract No 121-S

WHITMAN, REQUARDT & ASSOCIATES ENGINEERS 1304 ST. PAUL ST. BALTIMORE, MARYLAND	HOWARD COUNTY METROPOLITAN COMMISSION DATE: 5-12-66 <i>W.O. Lippert</i> CHIEF ENGINEER	CONTRACT NO. 121-S	PLAN OF SEWER MAINS	LITTLE PATUXENT RIVER INTERCEPTOR SECTION NO.4	DRAWING NO. 3	SCALE 1" = 50'
					OF 7	490-481 489-481 488-481

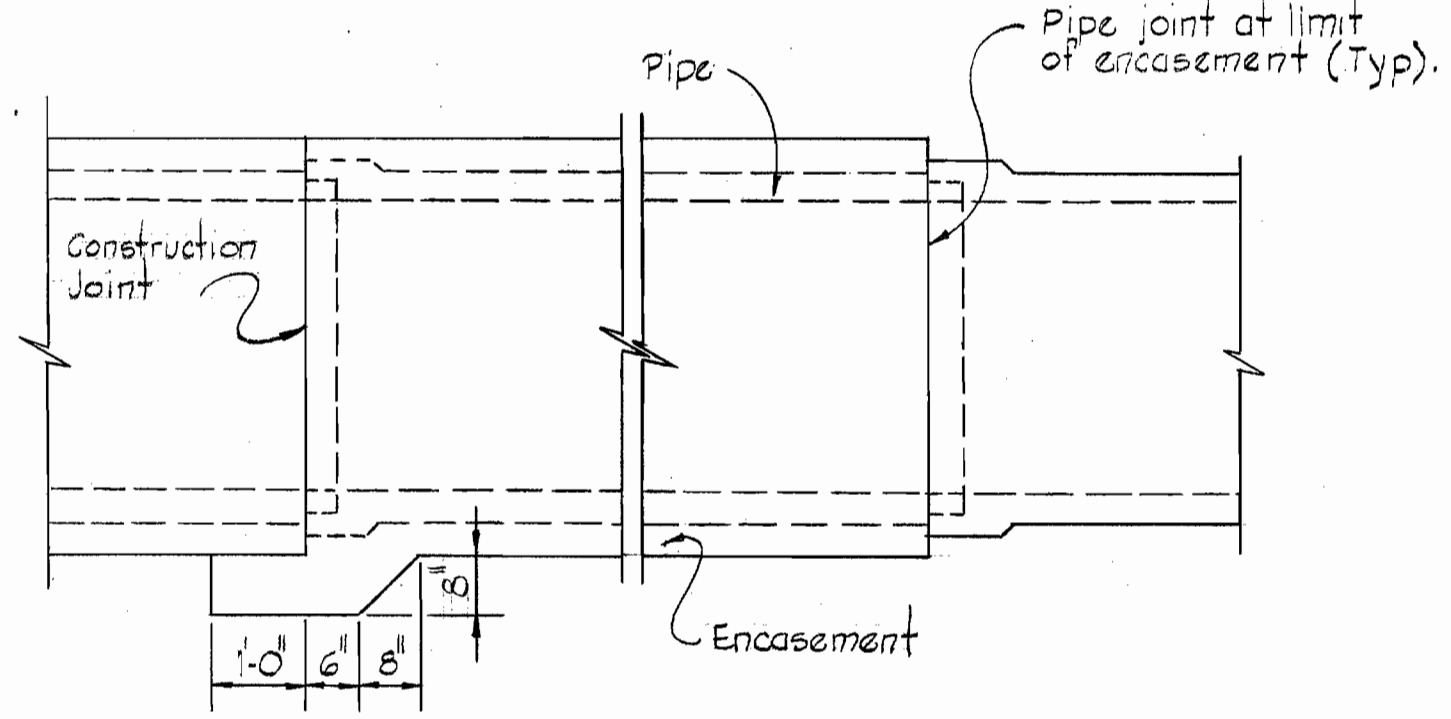
W.O. 5651

19 JUNE 1967 10 SHEETS FB#3504



NOTE: For General Notes, See Drawing N97.

W.R. & A. B.M. #24 Elev. 278.97
 R.R. spike on side of 16" Walnut
 25' Rt. of Sta. 0+60 between
 P.I. #S-94 & S-95 on top stream Bk.

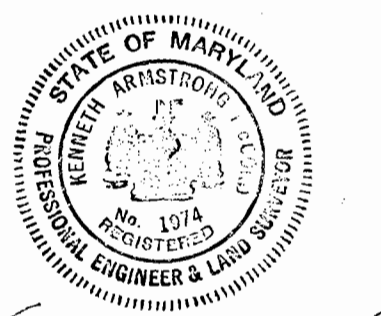


NOTE: Construction joint detail applies only where encasement joints are required in multiple pour stream crossings.

For Details not shown See Standard Detail S-1 in Specifications.

W.R. & A. B.M. #23 Elev. 277.18
 R.R. Spike on side of 18" Oak 20' right of
 Sta. 2+47 between P.I. #S-90 & S-91 Approx.
 10' from river bank.

Property of
 HOWARD RESEARCH AND DEVELOPMENT CORPORATION

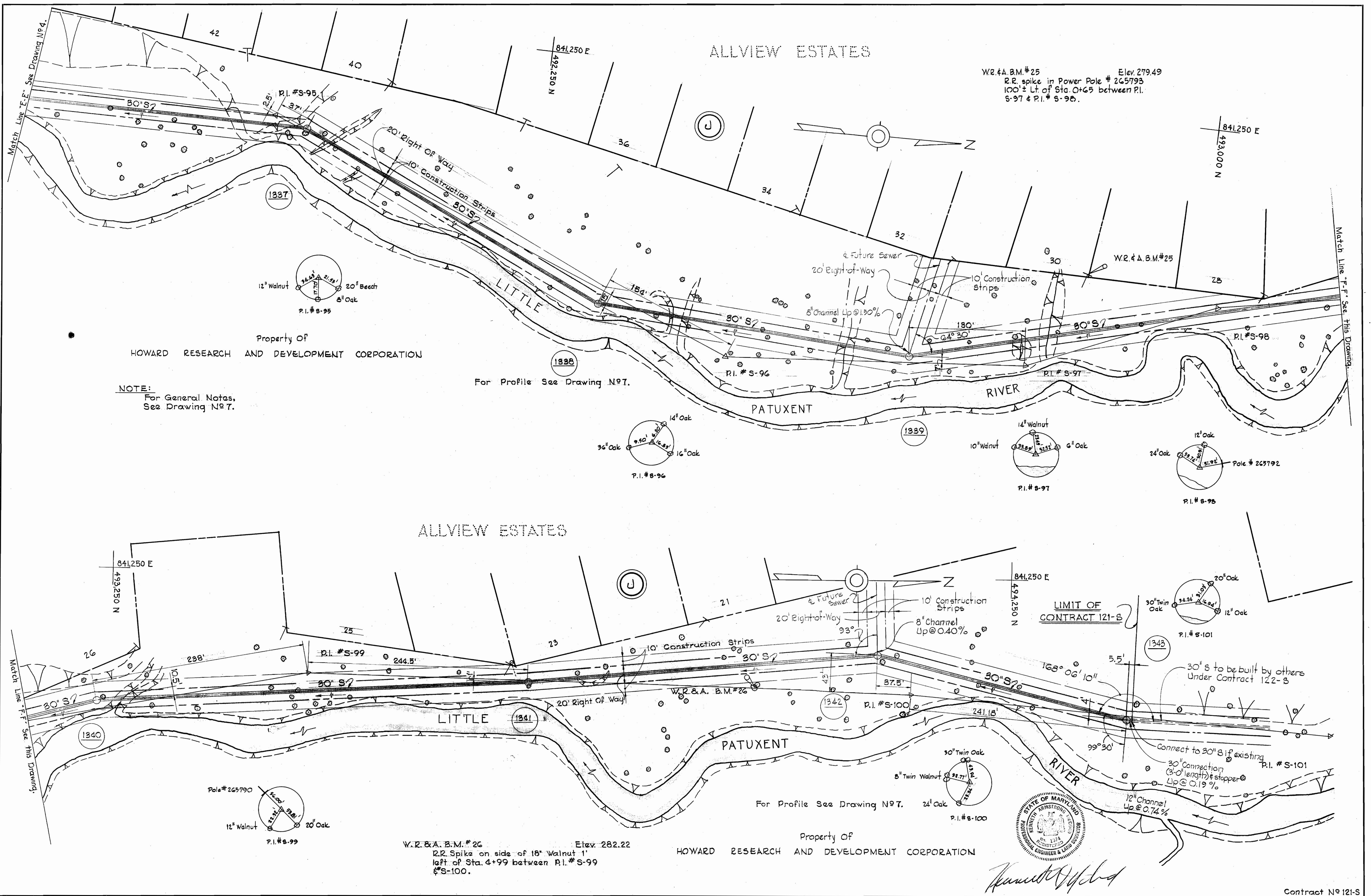


Contract N9121-S

WHITMAN, REQUARDT & ASSOCIATES ENGINEERS 1304 ST. PAUL ST. BALTIMORE, MARYLAND	HOWARD COUNTY METROPOLITAN COMMISSION DATE 5-12-66 W.O. Lubert CHIEF ENGINEER	CONTRACT NO. 121-S	PLAN OF SEWER MAINS	LITTLE PATUXENT RIVER INTERCEPTOR SECTION NO. 4	DRAWING NO. 4 OF 7 SCALE 1" = 50' 19 JUNE 1967 AS BUILT F.B. #3504
---	--	--------------------	------------------------	--	---

WS 121-S/4

WS 121-S/5



W.R. & A. B.M. #25 Elev. 279.49
 R.E. spike in Power Pole # 265793
 100' ± Lt of Sta. 0+65 between P.I. 5-97 & P.I. 5-98.

Property Of
 HOWARD RESEARCH AND DEVELOPMENT CORPORATION

NOTE:
 For General Notes,
 See Drawing No. 7.

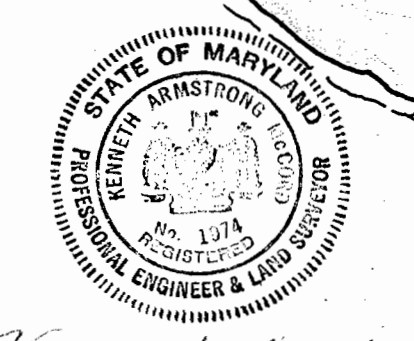
For Profile See Drawing No. 7.

LIMIT OF
 CONTRACT 121-S

For Profile See Drawing No. 7.

Property Of
 HOWARD RESEARCH AND DEVELOPMENT CORPORATION

W.R. & A. B.M. #26 Elev. 282.22
 R.E. Spike on side of 18" Walnut 1'
 10ft of Sta. 4+99 between P.I. #S-99
 & S-100.

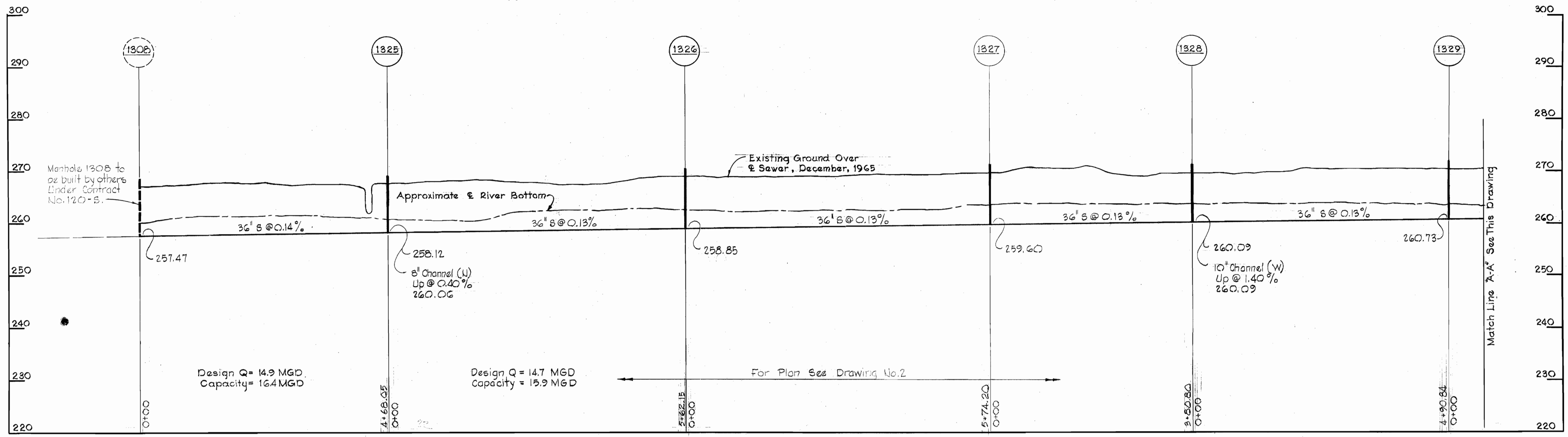


WHITMAN, REQUARDT & ASSOCIATES ENGINEERS 1304 ST. PAUL ST. BALTIMORE, MARYLAND	HOWARD COUNTY METROPOLITAN COMMISSION DATE: 5-12-66 CHIEF ENGINEER: [Signature]	CONTRACT NO. 121-S	PLAN OF SEWER MAINS	LITTLE PATUXENT RIVER INTERCEPTOR SECTION NO. 4	Contract No 121-S DRAWING NO. 5 OF 7 SCALE 1" = 50' 19 JUNE 1967 AS BUILT
---	---	--------------------	------------------------	--	--

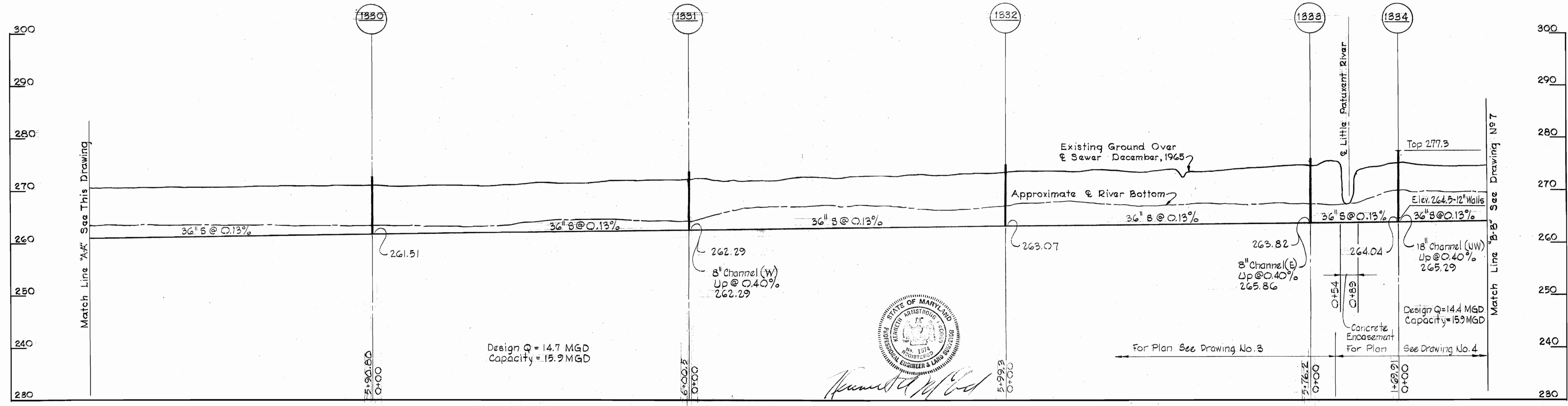
W.O. 5651

19 JUNE 1967 AS BUILT

Property Of
HOWARD RESEARCH AND DEVELOPMENT CORPORATION



Property Of
HOWARD RESEARCH AND DEVELOPMENT CORPORATION



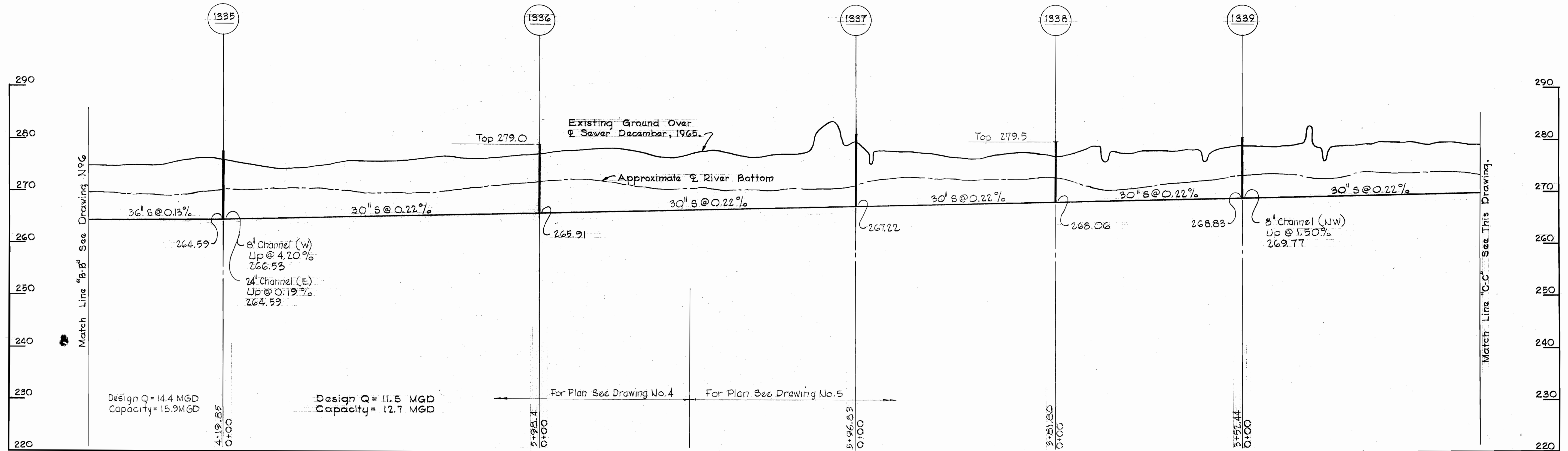
WS 121-S/6

WHITMAN, REQUARDT & ASSOCIATES ENGINEERS 1304 ST. PAUL ST. BALTIMORE, MARYLAND	HOWARD COUNTY METROPOLITAN COMMISSION DATE: 5-12-66 W.O. Feltner CHIEF ENGINEER	CONTRACT NO. 121-S	PROFILE OF SEWER MAINS	LITTLE PATUXENT RIVER INTERCEPTOR SECTION NO. 4	Contract N9 121-S
					DRAWING NO. 6 OF 7

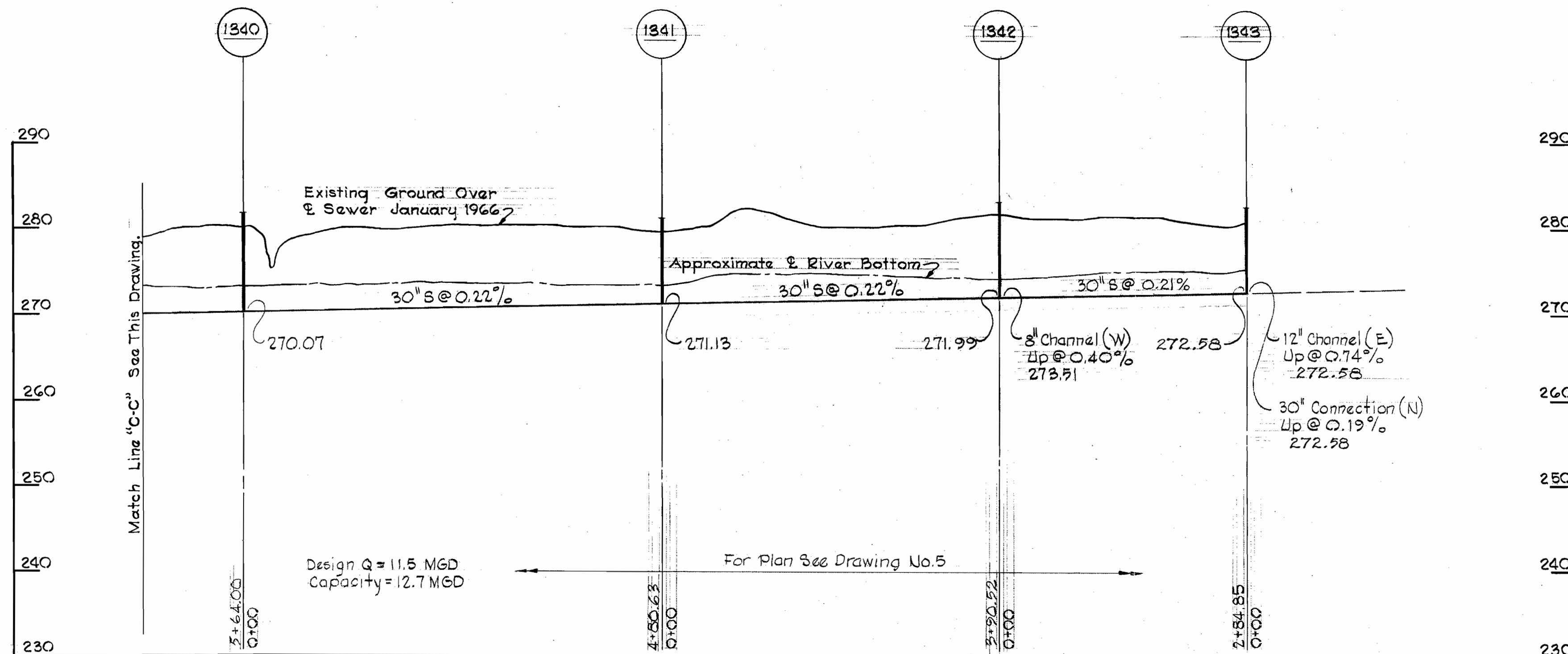
W.O. 5651

19 JUNE 1967 AS BUILT

Property Of
HOWARD RESEARCH AND DEVELOPMENT CORPORATION



Property Of
HOWARD RESEARCH AND DEVELOPMENT CORPORATION



GENERAL NOTES

1. Approximate locations of existing mains are shown. The Contractor shall take all necessary precautions to protect the existing mains and services and maintain uninterrupted supply. Any damage incurred shall be repaired immediately.
2. All pipe elevations shown are invert ϕ elevations.
3. The Contractor shall locate existing utilities a minimum of two weeks in advance of construction operations in vicinity of utilities.
4. For all details not shown, see standard details bound in specifications.
5. Build all Manholes to 1'-6" above existing ground unless otherwise shown on drawings.
6. All sewers shall be R.C.P. Class B-50 unless otherwise noted.
7. Cost of grouted Rip-Rap shall be included in the unit price bid for excavation and backfill for sewers.
8. All manholes shall be 5'-0" inside diameter (standard Detail S 2A).
9. Clear all poles by 2'-0" minimum.
10. Coordinate values shown are in the Maryland State Grid System.
11. The Contractor shall provide a joint in each sewer main within 2'-0" of all manhole walls.



James W. Whitman
Contract No. 121-S

WHITMAN, REQUARDT & ASSOCIATES ENGINEERS 1304 ST. PAUL ST. BALTIMORE, MARYLAND	HOWARD COUNTY METROPOLITAN COMMISSION DATE 5-12-66 <i>W O Libbert</i> CHIEF ENGINEER	CONTRACT NO. 121-S	PROFILE OF SEWER MAINS	LITTLE PATUXENT RIVER INTERCEPTOR SECTION NO. 4	DRAWING NO. 7 OF 7	SCALE H-1"=100' V-1"=10'
---	---	--------------------	---------------------------	--	--------------------------	--------------------------------

W. O. 5651

19 JUNE 1967 AS BUILT

WS 121-S/7