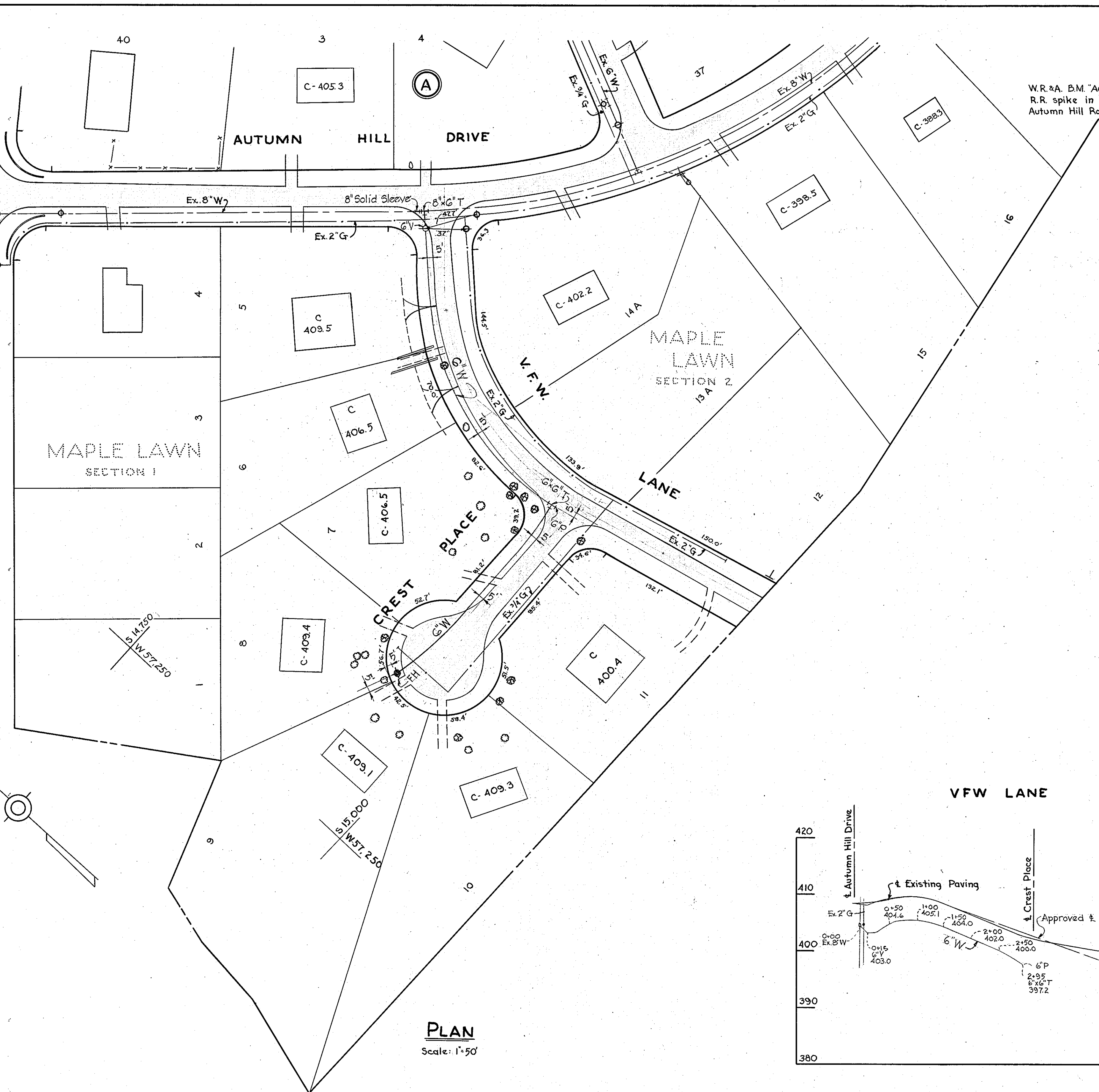
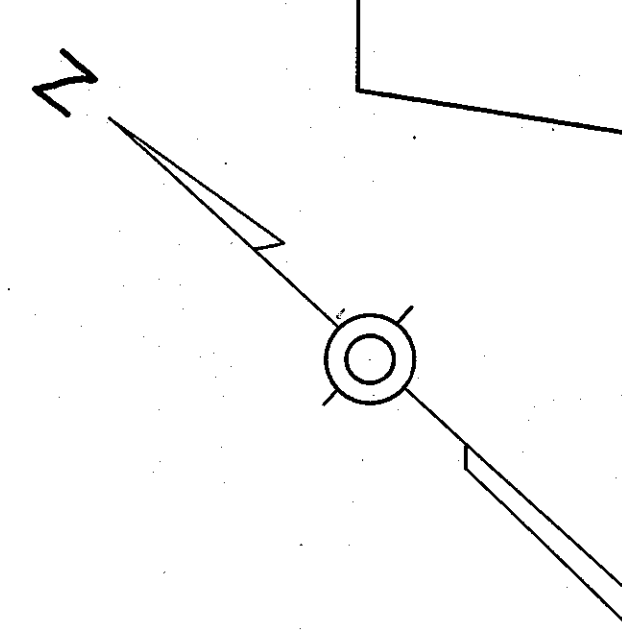


COLUMBIA PIKE
U. S. ROUTE 29

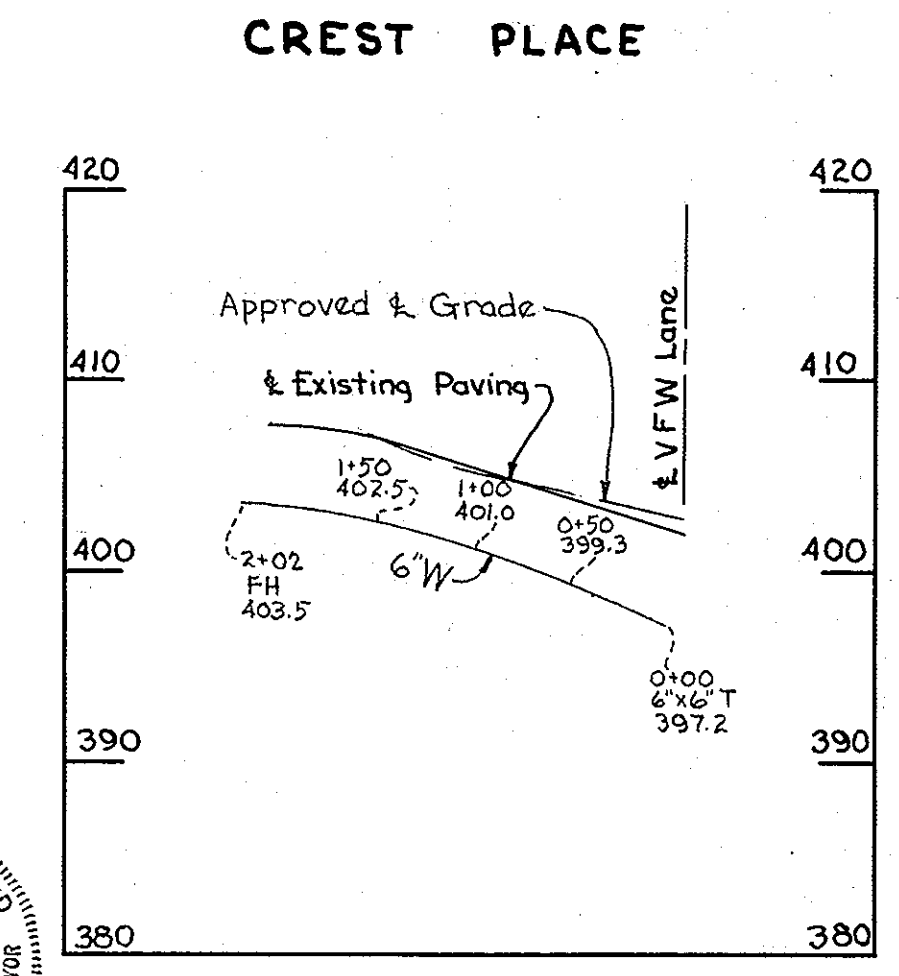
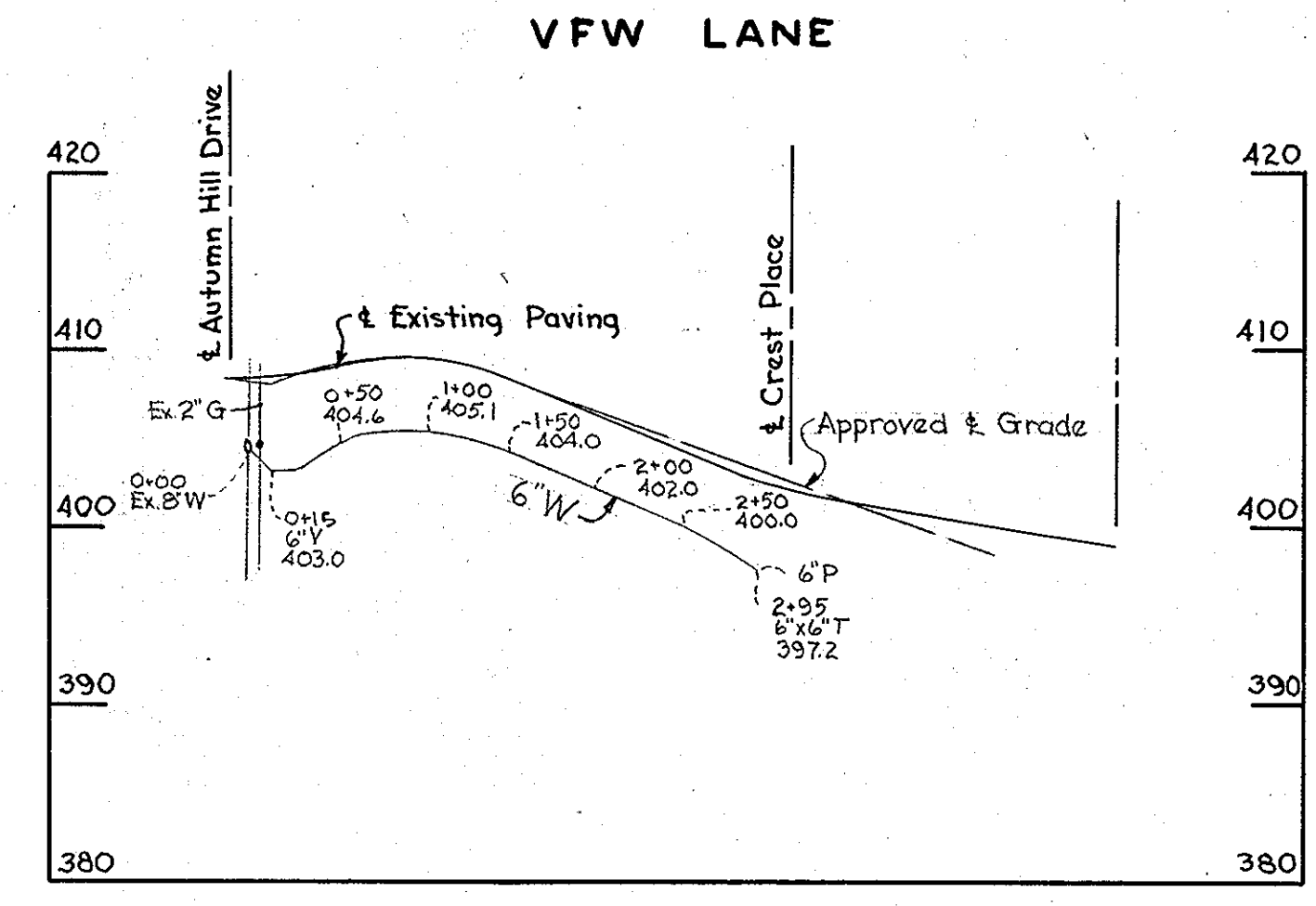


W.R. & B.M. "Autumn" Elev. 401.00
R.R. spike in base Pole #2 Intersection
Autumn Hill Road & Autumn Hill Court

GENERAL NOTES

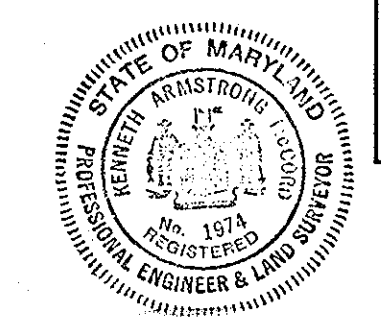
1. Approximate location of existing mains are shown. The Contractor shall take all necessary precautions to protect the existing mains and services and maintain uninterrupted Supply. Any damage incurred shall be repaired immediately.
2. All pipe elevations shown are invert elevations.
3. The Contractor shall locate existing utilities a minimum of two weeks in advance of construction operations in vicinity of utilities.
4. For all standard details see Standards bound in Specifications.
5. All water mains to be C.I.P. Class 22 and have a minimum of 3 1/2' cover.
6. Block all fittings with concrete, see standard details bound in specifications.
7. Bury line elevation on fire hydrant shall be set the same as edge of paving or as directed by the Engineer in the field.
8. Buttress Fire Hydrants with concrete; provide copper pipe at weep holes as required for positive drainage. For Buttress dimensions see standard detail W-8 Buttress for Caps.
9. Clear all poles by 2'-0" minimum. Clear all utilities by a 6" minimum.

PLAN
Scale: 1"=50'



PROFILE

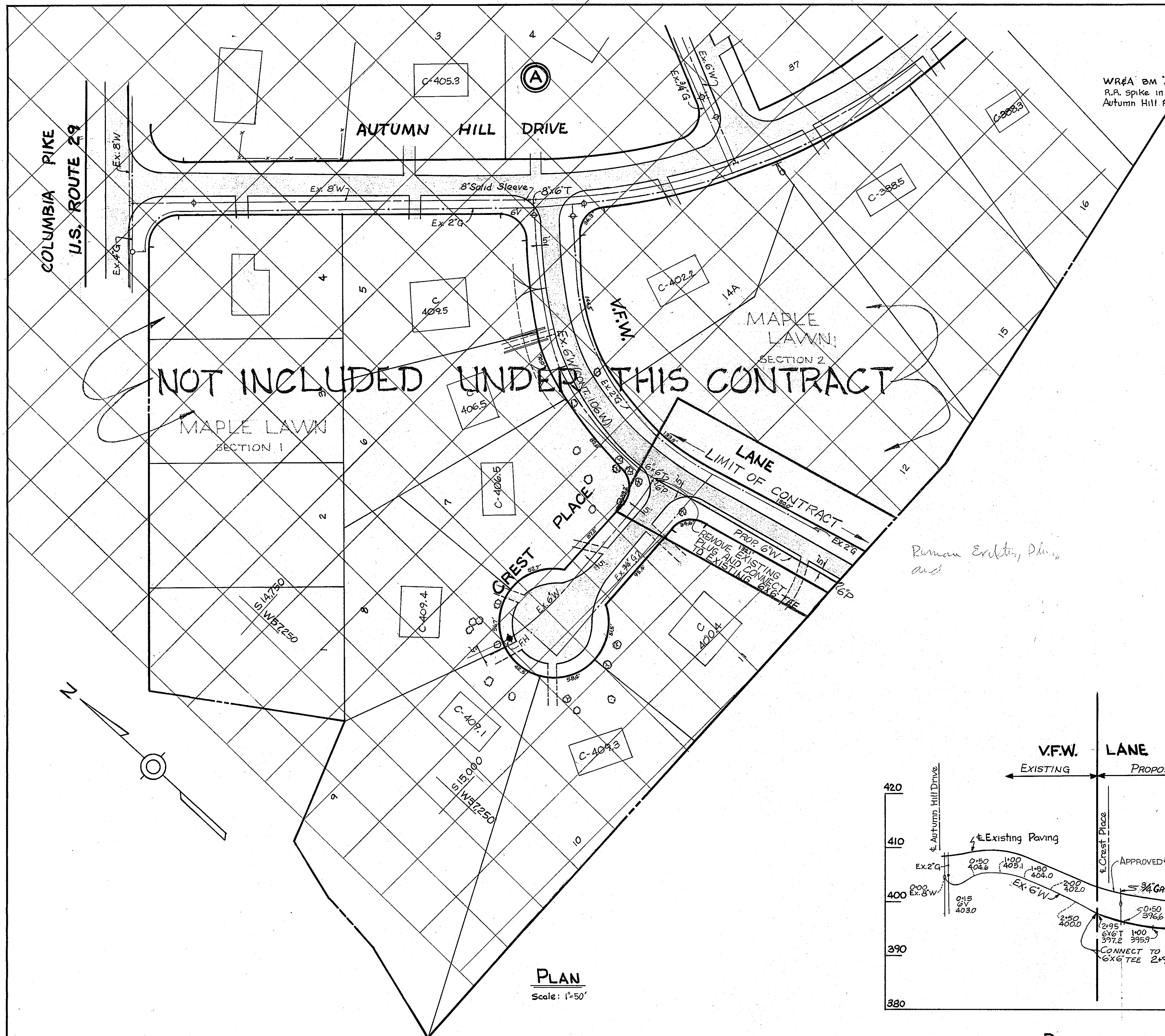
Scale: H-1"=100'
V-1"=10'



<p>WHITMAN, REQUARDT & ASSOCIATES ENGINEERS 1304 ST. PAUL ST. BALTIMORE, MARYLAND</p>	<p>HOWARD COUNTY METROPOLITAN COMMISSION Aug 30, 1965 DATE <i>W O Kilbat</i> CHIEF ENGINEER</p>	<p>CONTRACT NO. 106-W</p>	<p>PLAN AND PROFILE OF WATER MAINS</p>	<p>ELLCOTT CITY SUB-DISTRICT</p>	<p>DRAWING NO. 1 OF 2 SCALE AS SHOWN</p>
-------------------------------------------------------------------------------------------------------	-------------------------------------------------------------------------------------------------------------	---------------------------	--------------------------------------------	----------------------------------	----------------------------------------------

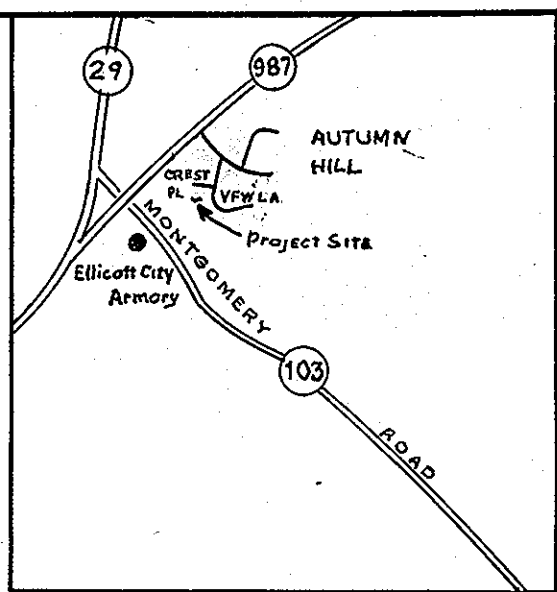
Contract No. 106-W

WS 106W/1



NOT INCLUDED UNDER THIS CONTRACT

WR&A BM "Autumn" Elev: 401.00
R.R. spike in base Pole #2 Intersection
Autumn Hill Road & Autumn Hill Court

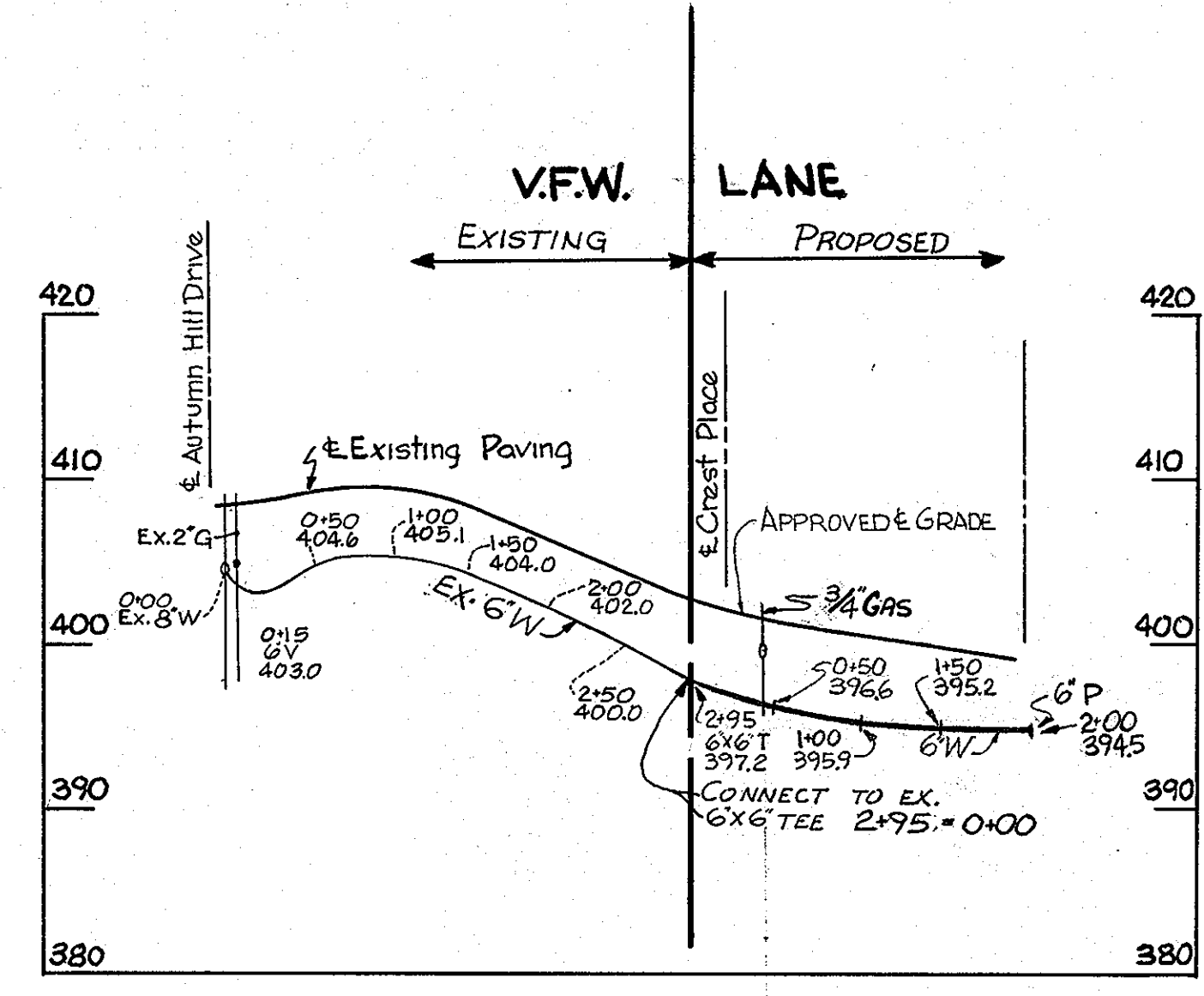


GENERAL NOTES

- 1 Approximate location of existing mains are shown. The Contractor shall take all necessary precautions to protect the existing mains and services and maintain uninterrupted supply. Any damage incurred shall be repaired immediately.
- 2 All pipe elevations shown are invert \ominus elevations.
- 3 The Contractor shall locate existing utilities a minimum of two weeks in advance of construction operations in vicinity of utilities.
- 4 For all standard detail see Standards bound in Specifications.
- 5 All water mains to have a minimum of $\frac{3}{4}$ " cover.
- 6 Block all fittings with concrete see standard detail bound in specifications.
- 7 Clear all poles by 2'-0" minimum. Clear all utilities by a 6" minimum.

Roman Excavating, Plans and

Quantity	Schedule
Item: 6" WATER	Quantity: 200 FT.



PROFILE

Scale: H-1"=100'
V-1"=10'

PLAN
Scale: 1"=50'

DEPARTMENT OF PUBLIC WORKS
BUREAU OF ENGINEERING
INSPECTION/SURVEY DIVISION

HOWARD COUNTY MARYLAND

APPROVED _____ APPROVED _____
 DIRECTOR OF PUBLIC WORKS DATE _____ CHIEF - BUREAU OF ENGINEERING DATE _____

ADDITION TO
CONTRACT NO. 106 W

PLAN AND PROFILE OF
WATER MAINS

ELLCOTT CITY SUB-DISTRICT

DRAWING NO. 2
OF 2

SCALE AS SHOWN

WS 106W/2