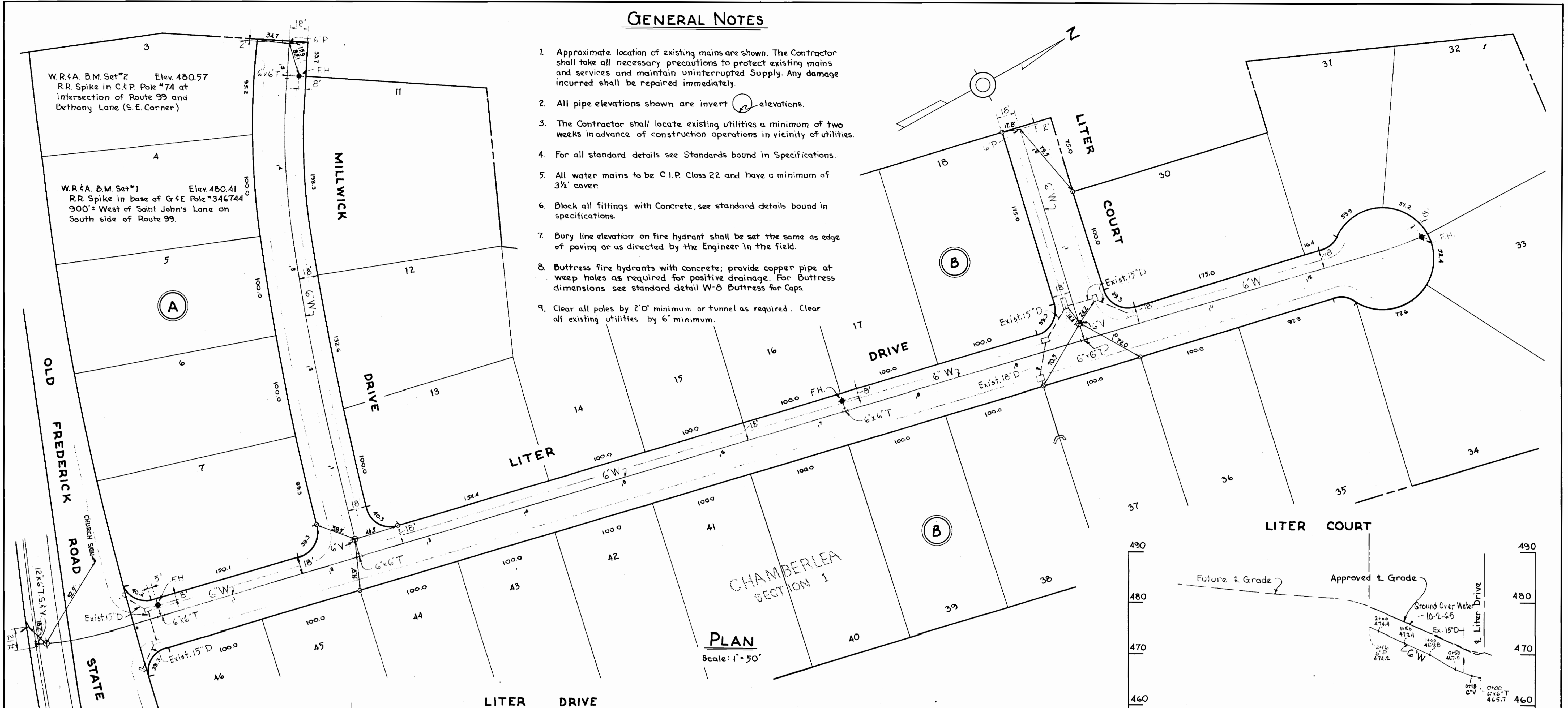
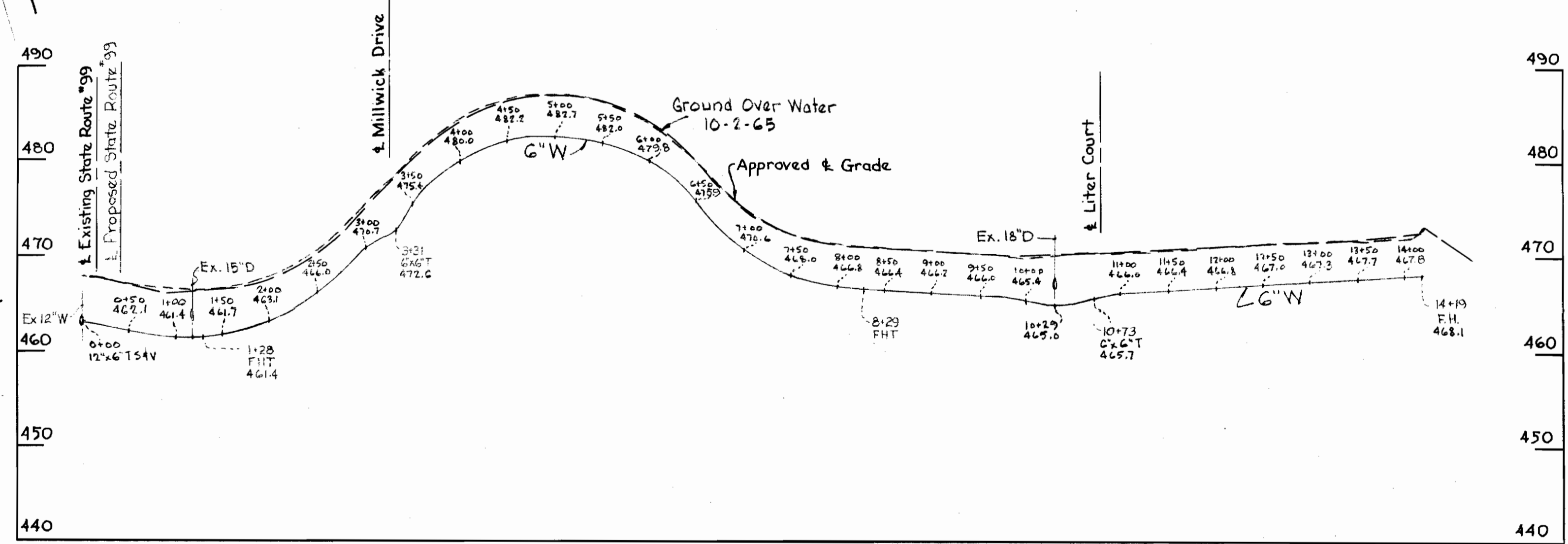
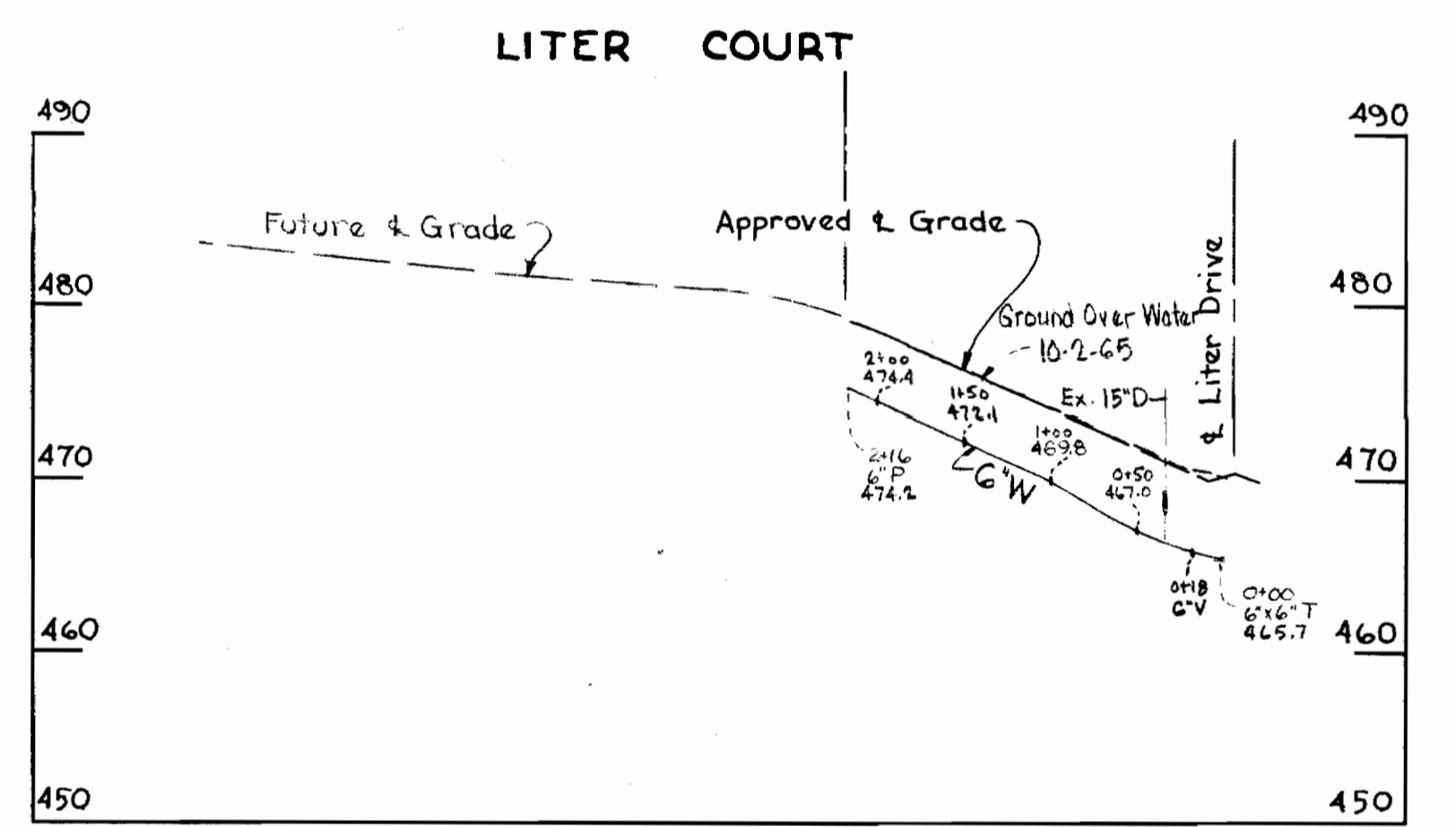


### GENERAL NOTES

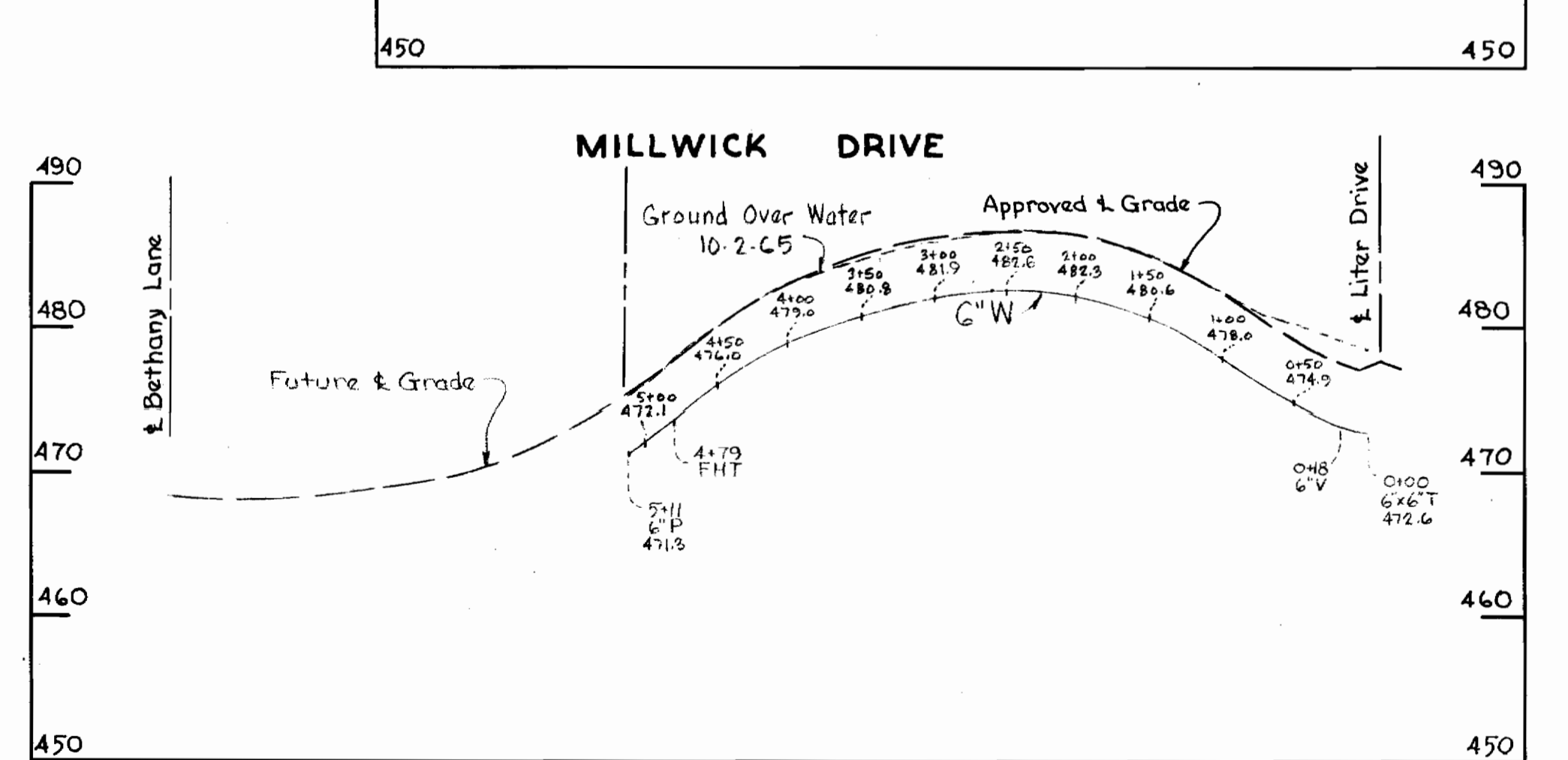
1. Approximate location of existing mains are shown. The Contractor shall take all necessary precautions to protect existing mains and services and maintain uninterrupted supply. Any damage incurred shall be repaired immediately.
2. All pipe elevations shown are invert elevations.
3. The Contractor shall locate existing utilities a minimum of two weeks in advance of construction operations in vicinity of utilities.
4. For all standard details see Standards bound in Specifications.
5. All water mains to be C.I.P. Class 22 and have a minimum of 3 1/2" cover.
6. Block all fittings with concrete, see standard details bound in specifications.
7. Bury line elevation on fire hydrant shall be set the same as edge of paving or as directed by the Engineer in the field.
8. Buttress fire hydrants with concrete; provide copper pipe at weep holes as required for positive drainage. For Buttress dimensions see standard detail W-8 Buttress for Caps.
9. Clear all poles by 2'0" minimum or tunnel as required. Clear all existing utilities by 6" minimum.



**PLAN**  
Scale: 1" = 50'



**PROFILE**  
Scale: H - 1" = 100'  
V - 1" = 10'



Chamberlea Section 1  
Contract No. 104 W

WHITMAN, REQUARDT & ASSOCIATES ENGINEERS 1304 ST. PAUL ST. BALTIMORE, MARYLAND	HOWARD COUNTY METROPOLITAN COMMISSION 10-4-65 DATE W.O. Libert CHIEF ENGINEER	CONTRACT NO. 104-W	PLAN AND PROFILE OF WATER MAINS	ELLICOTT CITY SUB-DISTRICT	DRAWING NO. 1 OF 1 SCALE AS SHOWN
---	---	--------------------	------------------------------------	----------------------------	--------------------------------------

W. O. 5129-2

AS BUILT 10 JAN. 66

WS 104W/1