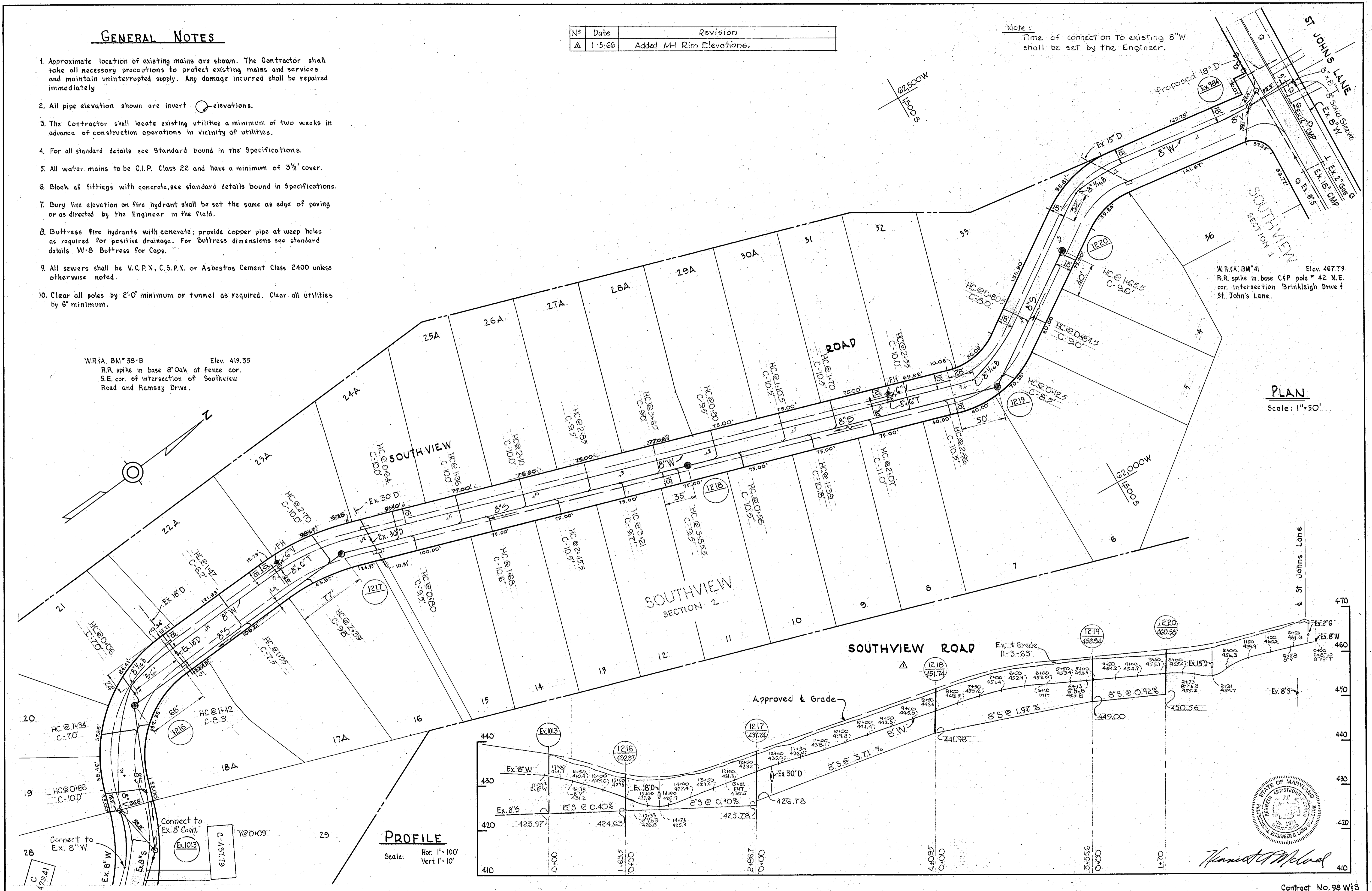


**GENERAL NOTES**

1. Approximate location of existing mains are shown. The Contractor shall take all necessary precautions to protect existing mains and services and maintain uninterrupted supply. Any damage incurred shall be repaired immediately.
2. All pipe elevation shown are invert  $\bigcirc$  elevations.
3. The Contractor shall locate existing utilities a minimum of two weeks in advance of construction operations in vicinity of utilities.
4. For all standard details see Standard bound in the Specifications.
5. All water mains to be C.I.P. Class 22 and have a minimum of 3 1/2' cover.
6. Block all fittings with concrete, see standard details bound in Specifications.
7. Bury line elevation on fire hydrant shall be set the same as edge of paving or as directed by the Engineer in the field.
8. Buttress fire hydrants with concrete; provide copper pipe at weep holes as required for positive drainage. For Buttress dimensions see standard details W-8 Buttress for Caps.
9. All sewers shall be V.C.P.X., C.S.P.X. or Asbestos Cement Class 2400 unless otherwise noted.
10. Clear all poles by 2'-0" minimum or tunnel as required. Clear all utilities by 6" minimum.

N <sup>o</sup>	Date	Revision
Δ	1-5-66	Added MH Rim Elevations.

Note: Time of connection to existing 8" W shall be set by the Engineer.



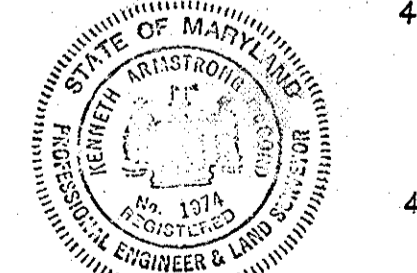
W.R.S.A. BM\* 38-B Elev. 419.35  
R.R. spike in base 8" Oak at fence cor.  
S.E. cor. of intersection of Southview Road and Ramsey Drive.

W.R.S.A. BM\* 41 Elev. 467.79  
R.R. spike in base CIP pole \* 42 N.E. cor. intersection Brinkleigh Drive & St. John's Lane.

**PLAN**  
Scale: 1"=50'

**PROFILE**

Scale: Hor. 1"=100'  
Vert. 1"=10'



*Handwritten signature*

Contract No. 98 WtS

WHITMAN, REQUARDT & ASSOCIATES ENGINEERS 1304 ST. PAUL ST. BALTIMORE, MARYLAND	HOWARD COUNTY METROPOLITAN COMMISSION 11-18-65 DATE <i>W. O. Silbert</i> CHIEF ENGINEER	CONTRACT NO. 98-W&S	PLAN AND PROFILE OF WATER MAINS	ELLICOTT CITY SUB-DISTRICT	DRAWING NO. 1 OF 1	SCALE AS SHOWN
---	---	---------------------	---------------------------------	----------------------------	--------------------	----------------

W. O. 5129-2 5735-2

AS BUILT 26 MAR 1966

WS 98 W&S/1