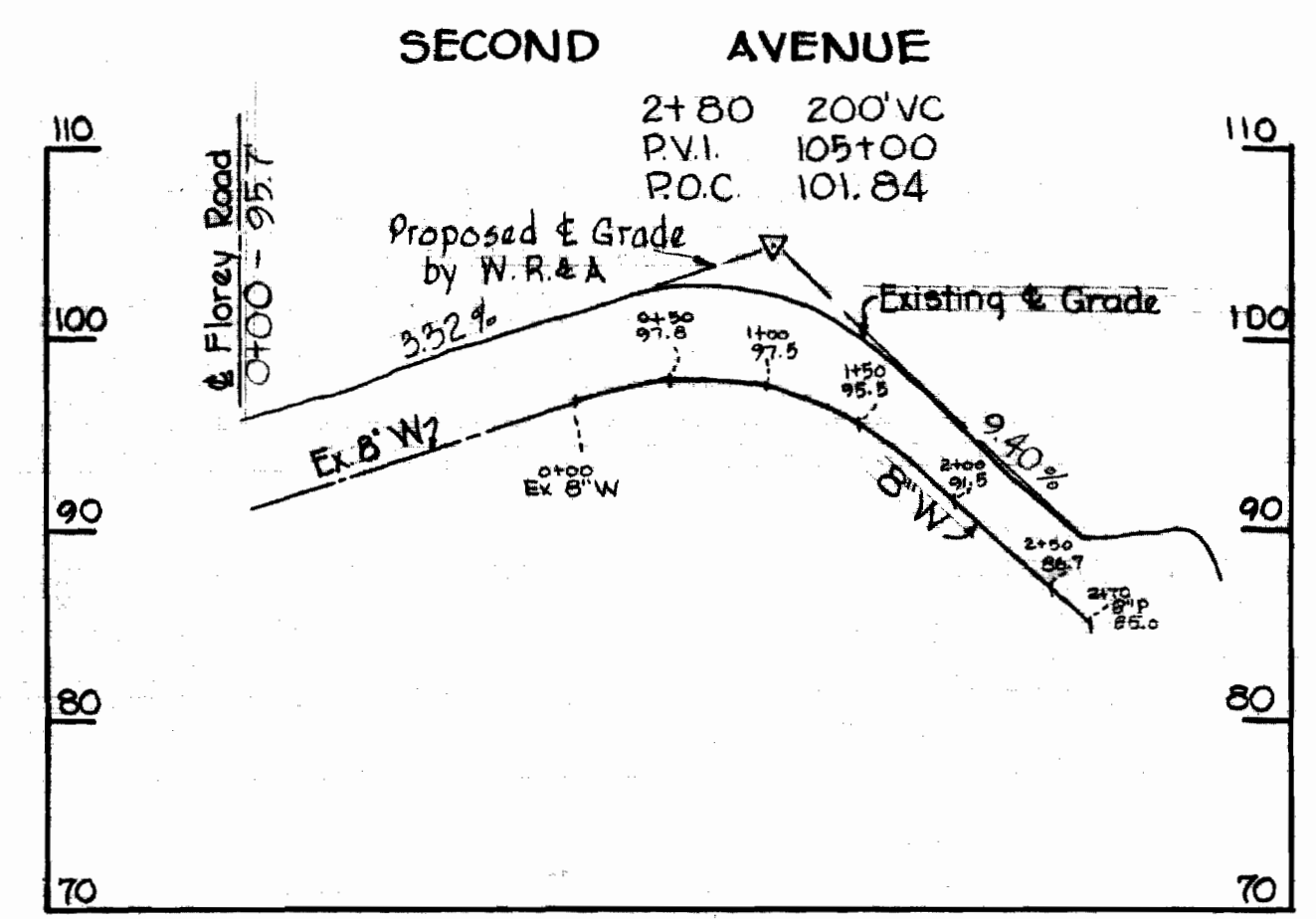


W.R. & A. B.M. "A" Elev. 100.00  
 N. Flange Bolt of Fire Hydrant, 185' south  
 of intersection of Florey and Hanover Roads.



**GENERAL NOTES**

1. Approximate location of existing mains are shown. The Contractor shall take all necessary precautions to protect the existing mains and services and maintain uninterrupted supply. Any damage incurred shall be repaired immediately.
2. All pipe elevations shown are invert elevations.
3. For all standard details see Standards bound in Specifications.
4. All water mains to be C.I.P. Class 22 and have a minimum of 3 1/2' cover.
5. Block all fittings with concrete, see standard details bound in specifications.

<b>WHITMAN, REQUARDT &amp; ASSOCIATES</b> ENGINEERS 1304 ST. PAUL ST. BALTIMORE, MARYLAND	<b>HOWARD COUNTY METROPOLITAN COMMISSION</b>  DATE _____ CHIEF ENGINEER _____	<b>CONTRACT NO. 81-W</b>	<b>PLAN AND PROFILE OF WATER MAINS</b>	<b>ELKRIDGE SUB-DISTRICT</b>	<b>DRAWING NO. 1 OF 1</b>	<b>SCALE AS SHOWN</b>
--	---	--------------------------	--	------------------------------	---------------------------	-----------------------

W. O. 5129-2

AS BUILT 28 MAY 64

FB 3165

WS 81W/1