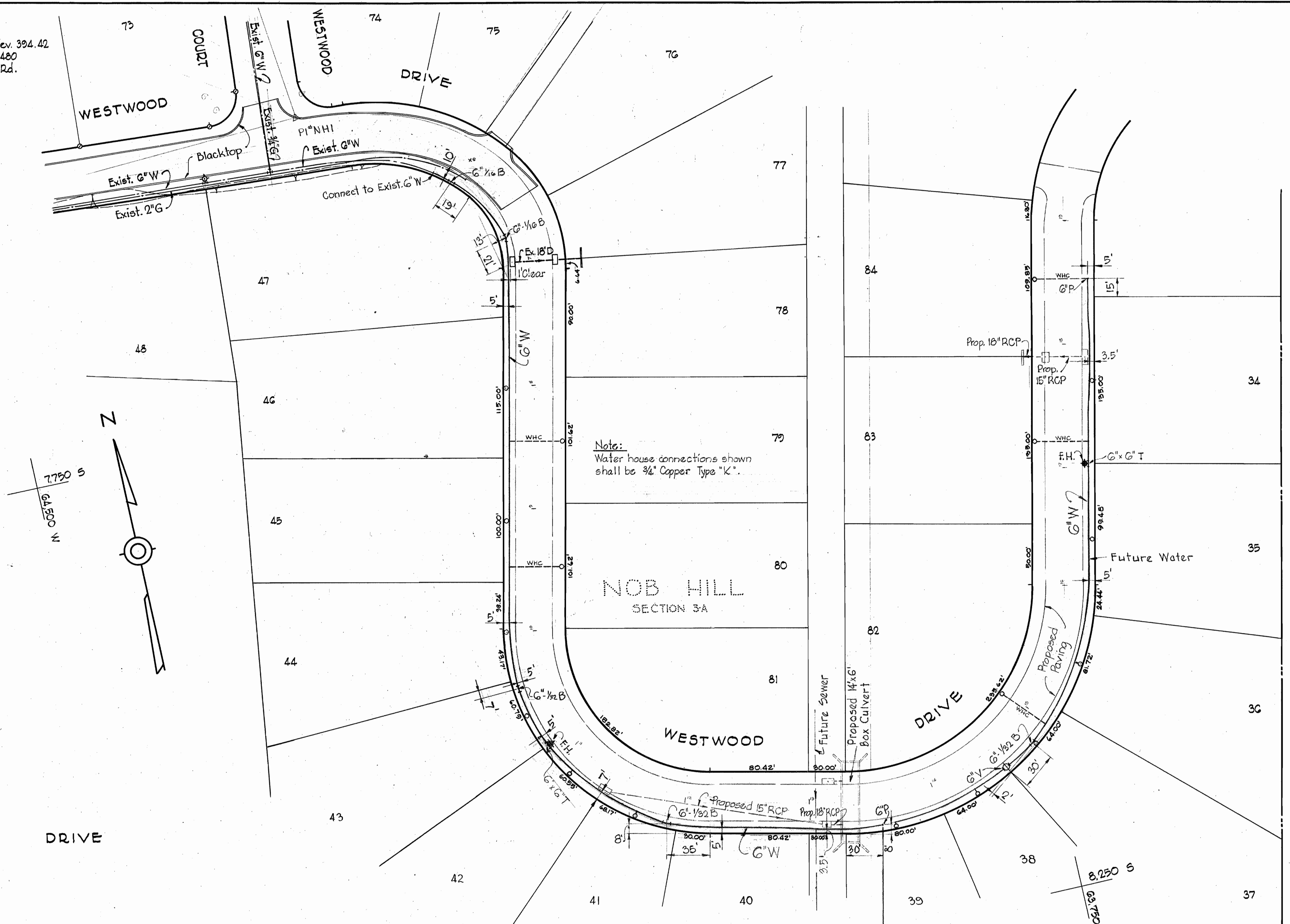


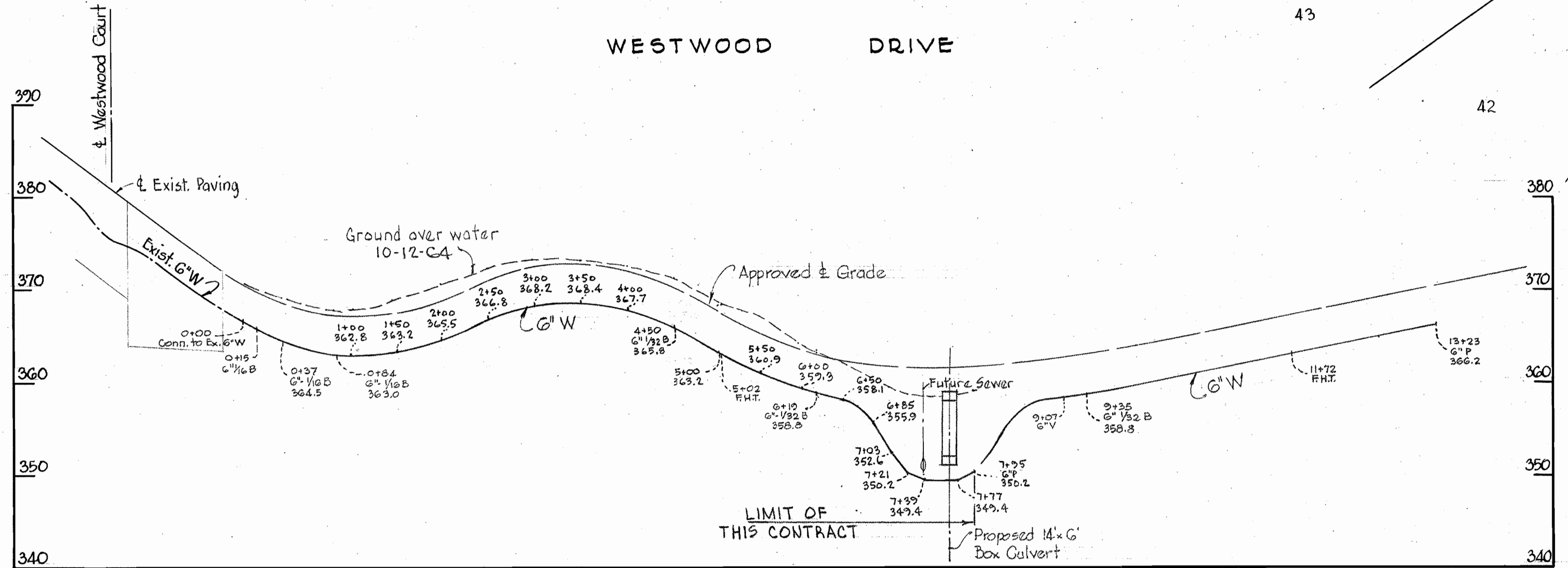
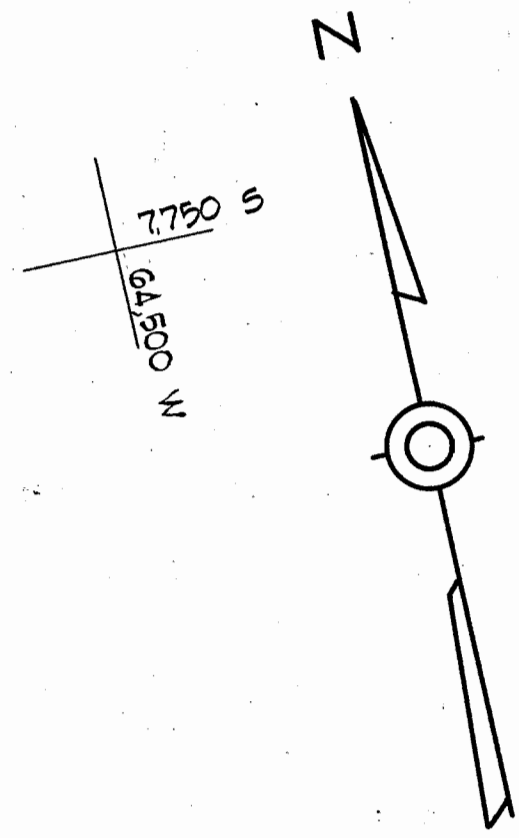
W.R. & A. DM# 51-L-1 Elev. 394.42
 R.R. spike in base of T & E pole # 68480
 S.E. cor. inter. Route 40 & Dogwood Rd.

GENERAL NOTES

1. Approximate location of existing mains are shown. The Contractor shall take all necessary precautions to protect the existing mains and services and maintain uninterrupted supply. Any damage incurred shall be repaired immediately.
2. All pipe elevations shown are invert elevations.
3. The Contractor shall locate existing utilities a minimum of two weeks in advance of construction operations in vicinity of utilities.
4. For all standard details see Standards bound in Specifications.
5. All water mains to be C.I.P. Class 22 and have a minimum of 3 1/2' cover.
6. Block all fittings with concrete, see standard details bound in specifications.
7. Bury line elevation on fire hydrant shall be set the same as edge of paving or as directed by the Engineer in the field.
8. Buttress Fire Hydrants with concrete; provide copper pipe at weep holes as required for positive drainage. For Buttress dimensions see Standard Detail W-8 Buttress for Caps.



Note:
 Water house connections shown shall be 3/4\"/>



PROFILE
 Scale: H: 1" = 100'
 V: 1" = 10'

PLAN
 Scale: 1" = 50'

NOB HILL
 Section 3-A
 Contract No. 79-W

WHITMAN, REQUARDT & ASSOCIATES ENGINEERS 1304 ST. PAUL ST. BALTIMORE, MARYLAND	HOWARD COUNTY METROPOLITAN COMMISSION Sept. 28, 1964 DATE <i>W. O. L. Lutz</i> CHIEF ENGINEER	CONTRACT NO. 79-W	PLAN AND PROFILE OF WATER MAINS	ELLICOTT CITY SUB-DISTRICT	DRAWING NO. 1 OF 1 SCALE AS SHOWN 8.9 SW 43
---	---	-------------------	------------------------------------	----------------------------	---

W. O. 5129-2

14 APR 65

AS BUILT

WS 79W/1