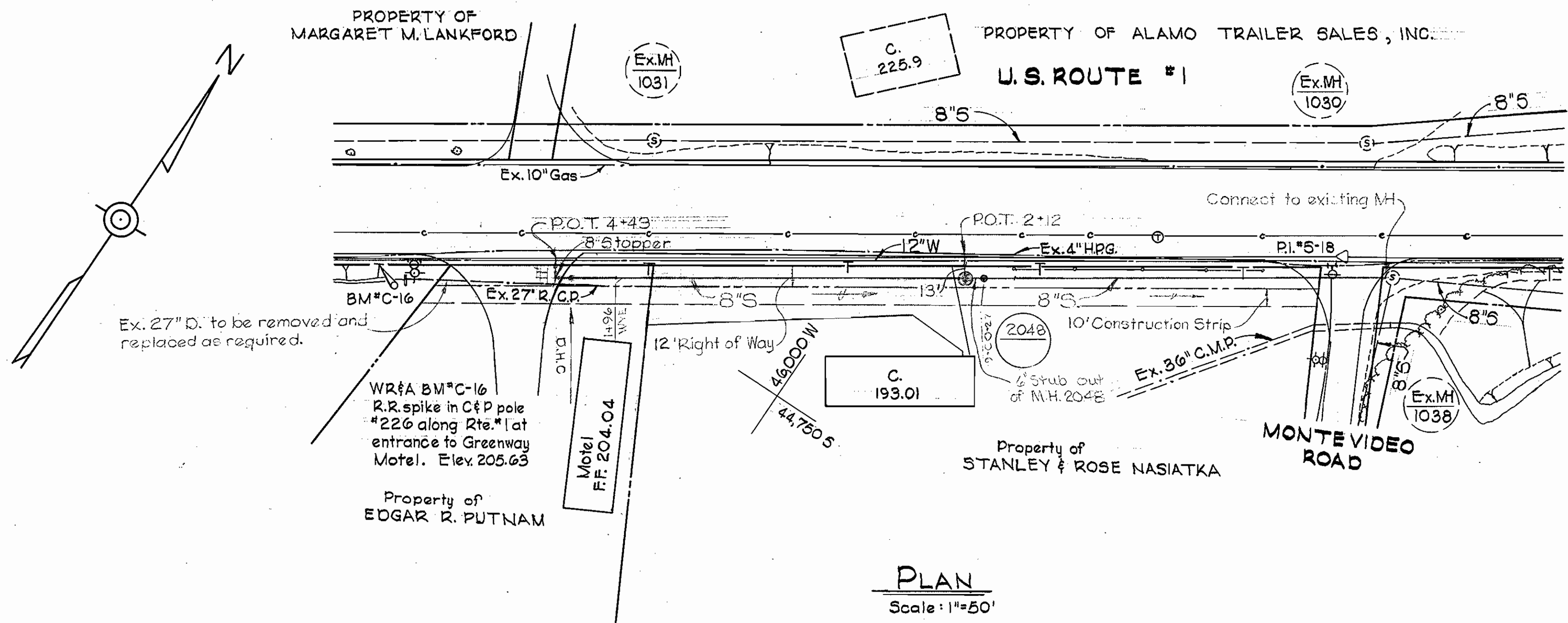


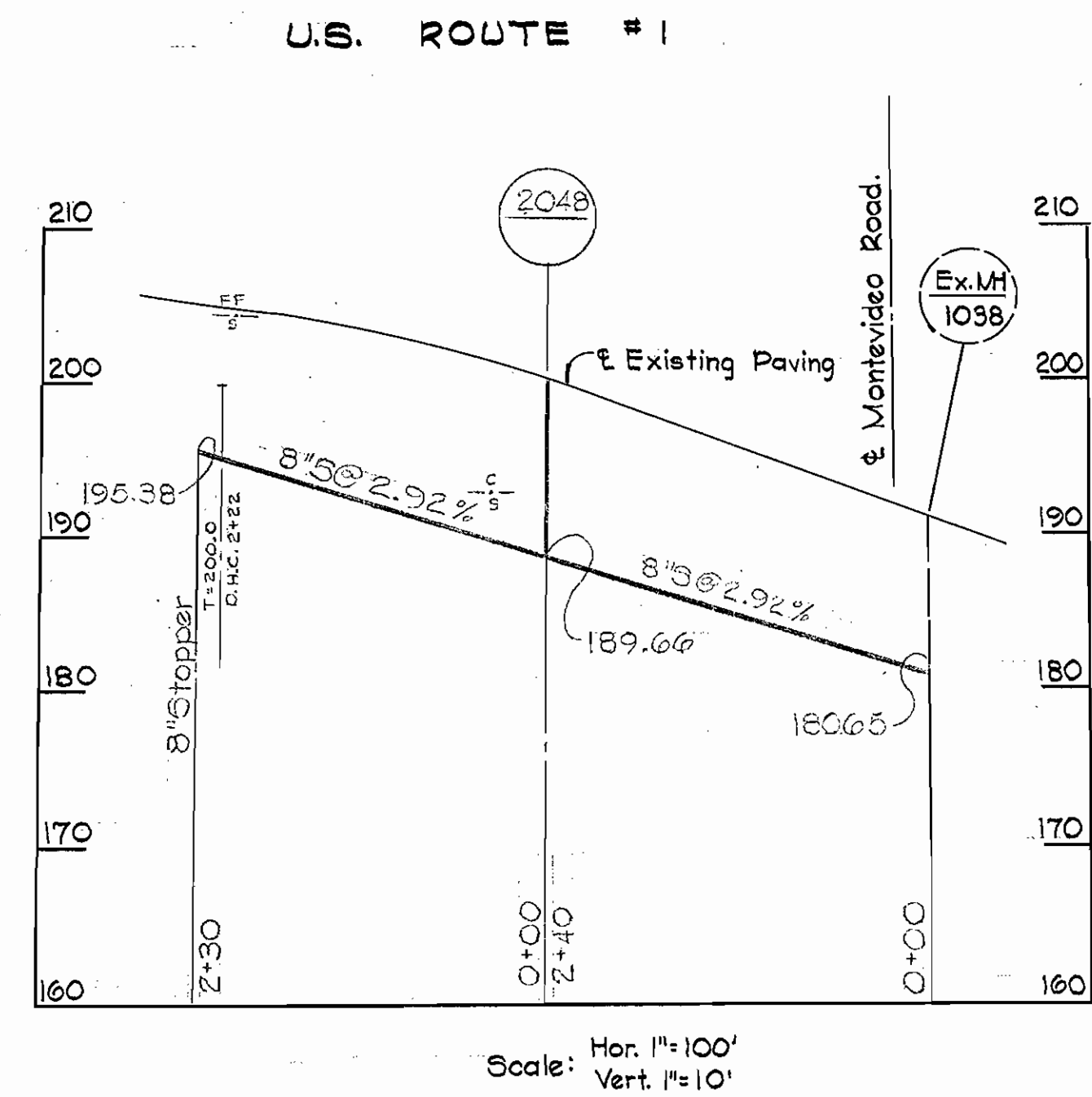
VICINITY MAP  
Scale: 1" = 1/4 mile



PLAN  
Scale: 1"=50'

GENERAL NOTES

1. Approximate locations of existing mains are shown. The Contractor shall take all necessary precautions to protect existing mains and services and maintain uninterrupted supply. Any damage incurred shall be repaired immediately.
2. All pipe elevations shown are invert  $\bigcirc$  elevations.
3. The Contractor shall locate existing utilities a minimum of two weeks in advance of construction operations in vicinity of utilities.
4. For all standard details see standards bound in Specifications.
5. Clear all utilities by a minimum of 6'; clear all poles by 2'-0" minimum or tunnel as required.
6. The Contractor shall provide a joint in all sewer mains within 2'-0" of exterior manhole walls.



Scale: Hor. 1"=100'  
Vert. 1"=10'



*Kenneth A. McCord*

Contract No. 56-S

WHITMAN, REQUARDT & ASSOCIATES ENGINEERS 1304 ST. PAUL ST. BALTIMORE, MARYLAND	HOWARD COUNTY METROPOLITAN COMMISSION DATE: 5-3-67 CHIEF ENGINEER	CONTRACT NO. 56-S	PLAN AND PROFILE OF SEWER MAINS	ELKRIDGE SUB - DISTRICT	DRAWING NO. 1 OF 1 SCALE AS SHOWN
---	---	-------------------	------------------------------------	-------------------------	--------------------------------------

WS 56S/1