

WHITMAN, REQUARDT & ASSOCIATES
ENGINEERS
1304 ST. PAUL ST.
BALTIMORE, MARYLAND

HOWARD COUNTY METROPOLITAN COMMISSION
DATE 17, 1957
CHAIRMAN

CONTRACT NO. 5W

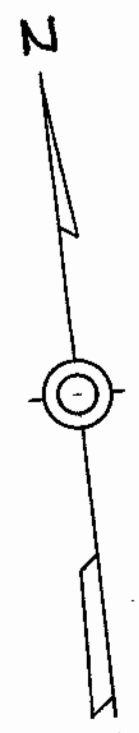
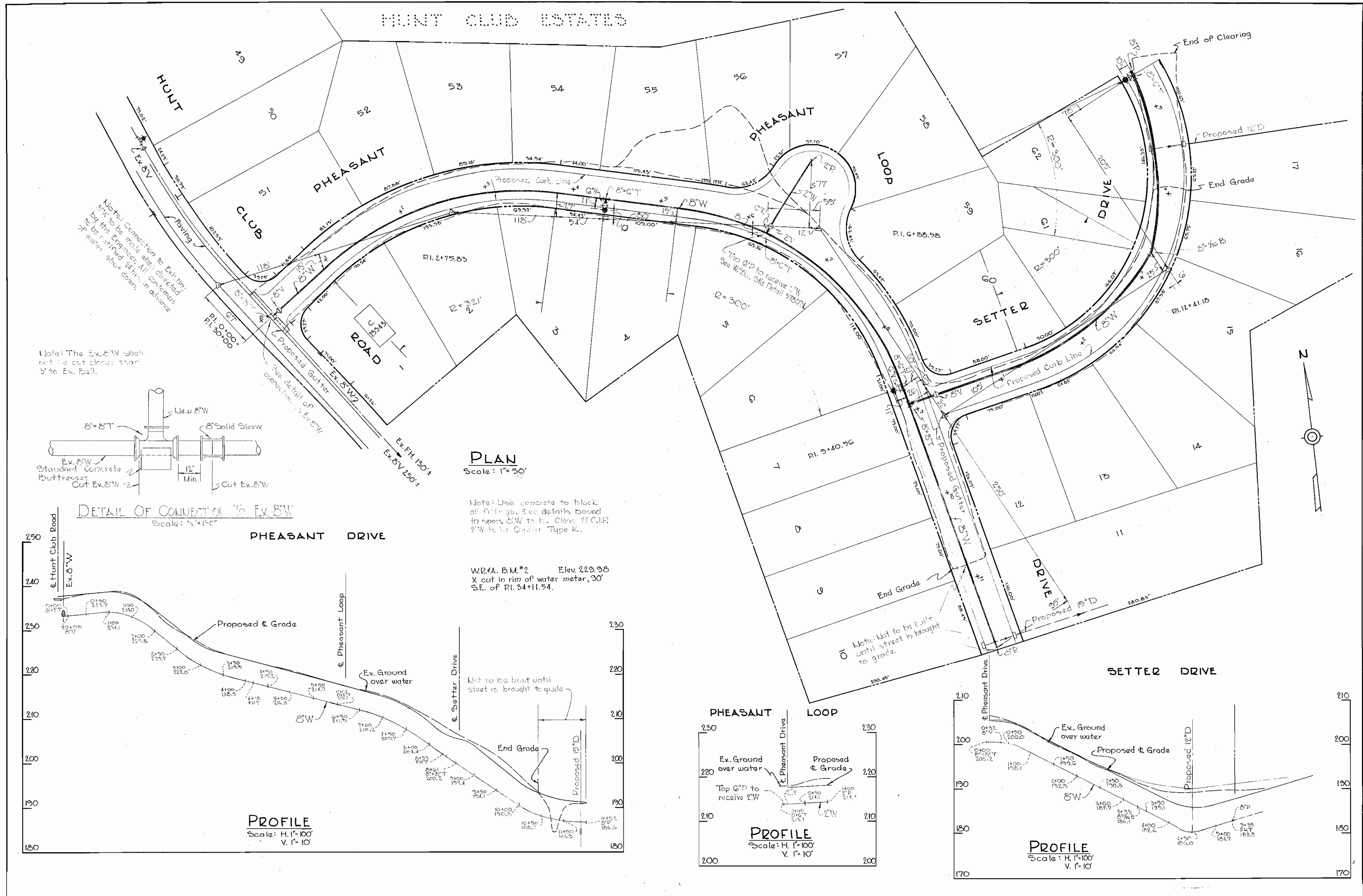
PLAN & VICINITY MAP
OF WATER MAINS

EXTENSION OF WATER SYSTEM
IN ELKRIDGE SUB-DISTRICT

DRAWING NO. 1 OF 4
SCALE AS SHOWN

WS 5W/1

WS 5W/ 1A



WHITMAN, REQUARDT & ASSOCIATES
ENGINEERS
1304 ST. PAUL ST.
BALTIMORE, MARYLAND

HOWARD COUNTY METROPOLITAN COMMISSION
June 30, 1958
DATE
Carl W. Meyer
CHAIRMAN

CONTRACT NO. 5W

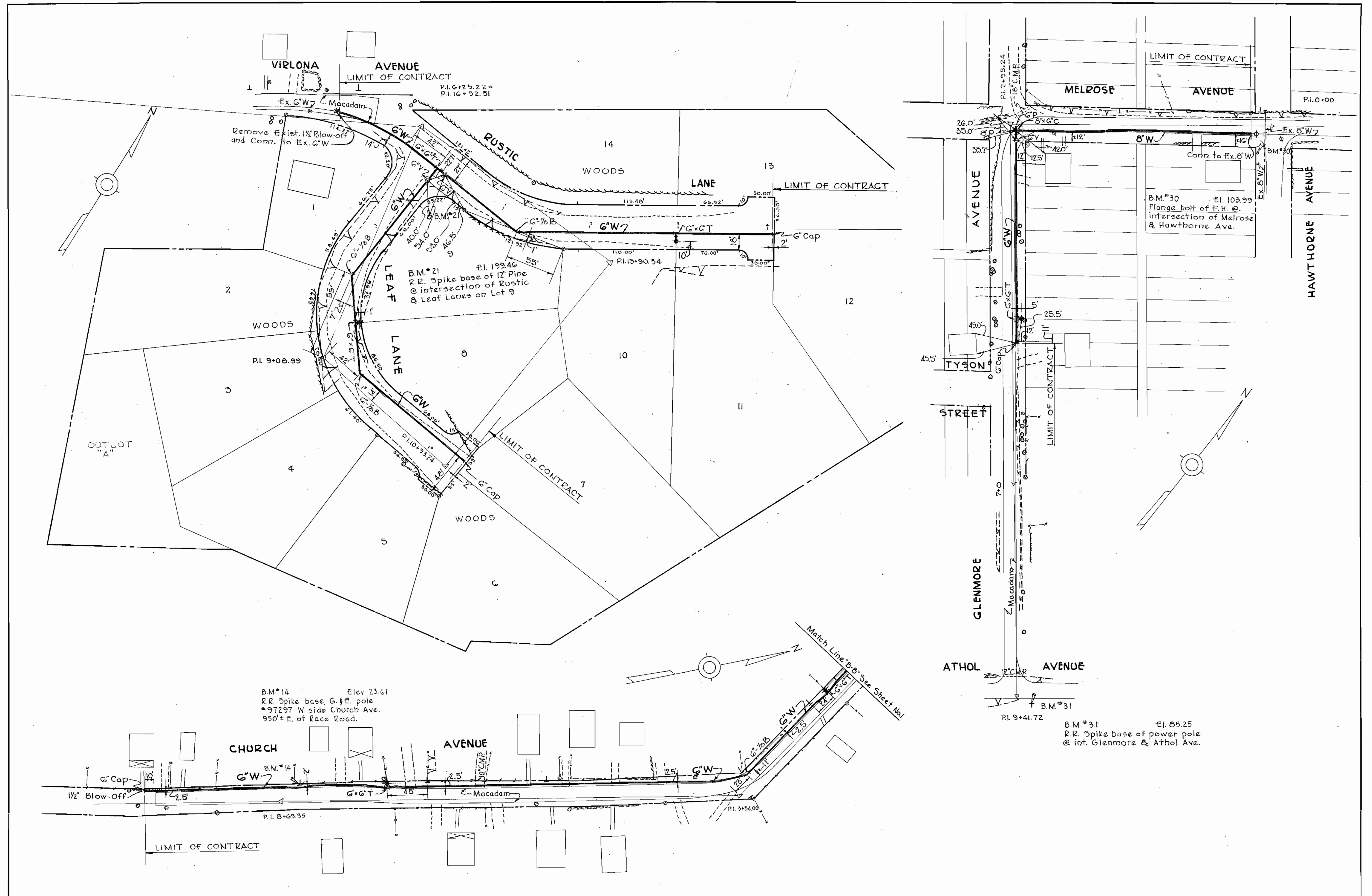
PLAN & PROFILE
OF WATER MAINS

EXTENSION OF WATER SYSTEM
IN ELKRIDGE SUB-DISTRICT

DRAWING
NO. 1A
OF 4
SCALE
AS
SHOWN
F.B. 0157

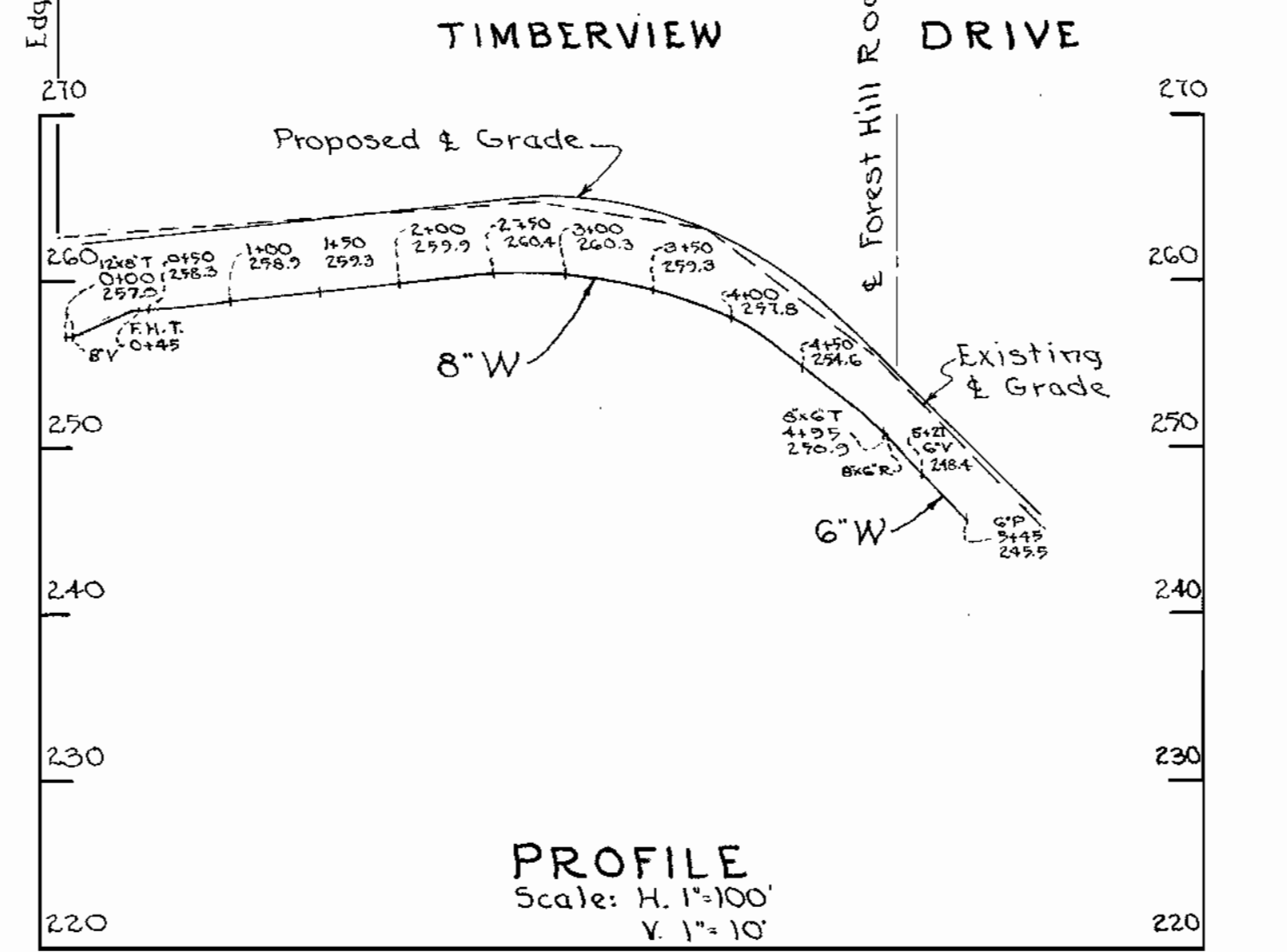
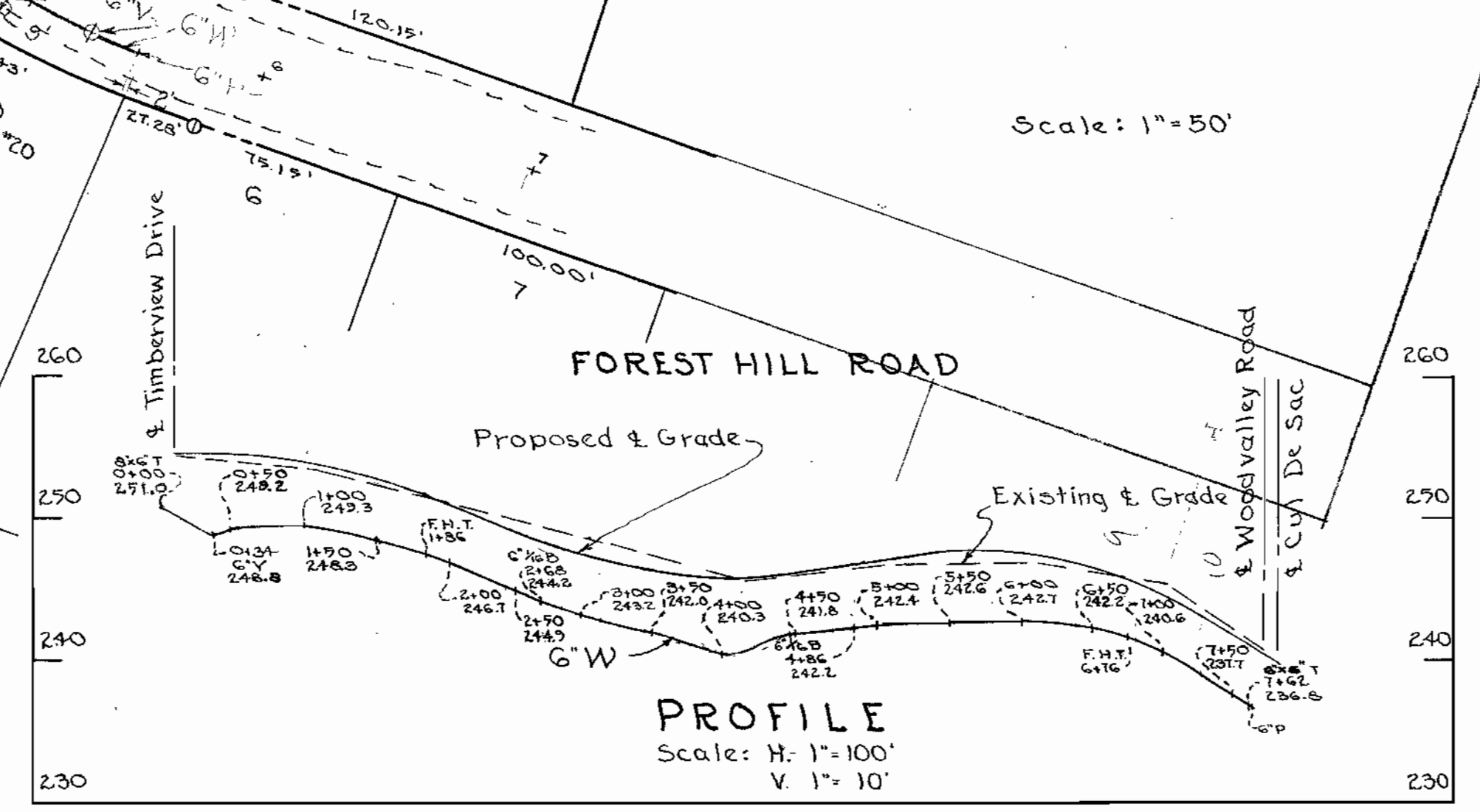
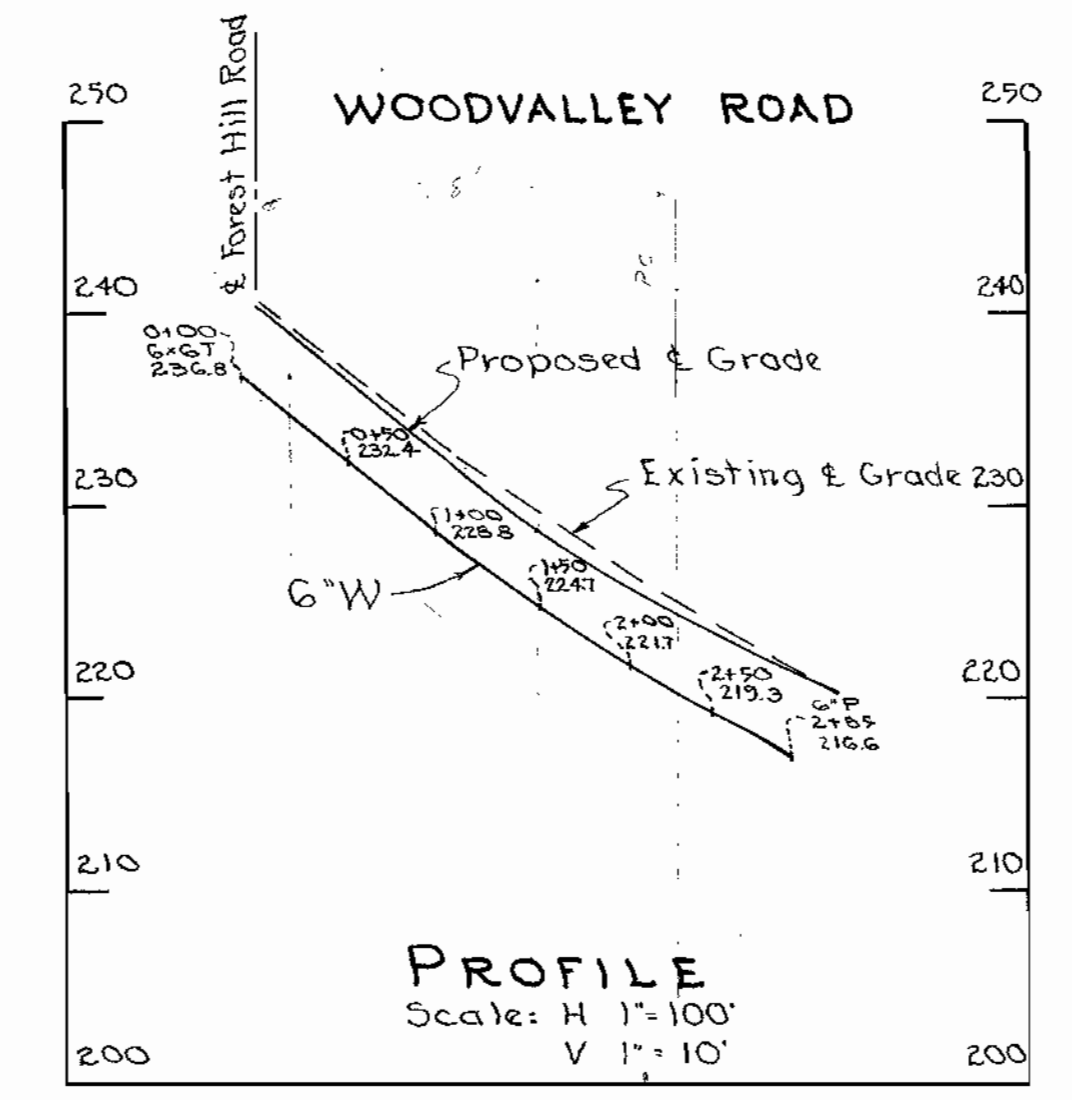
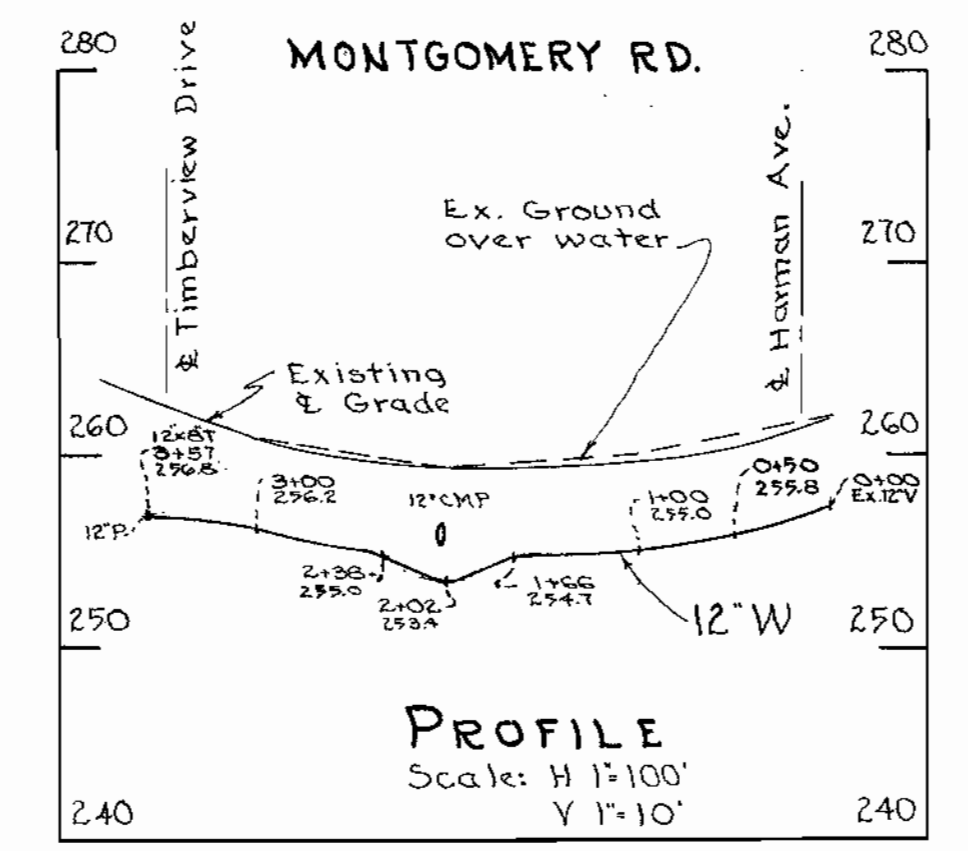
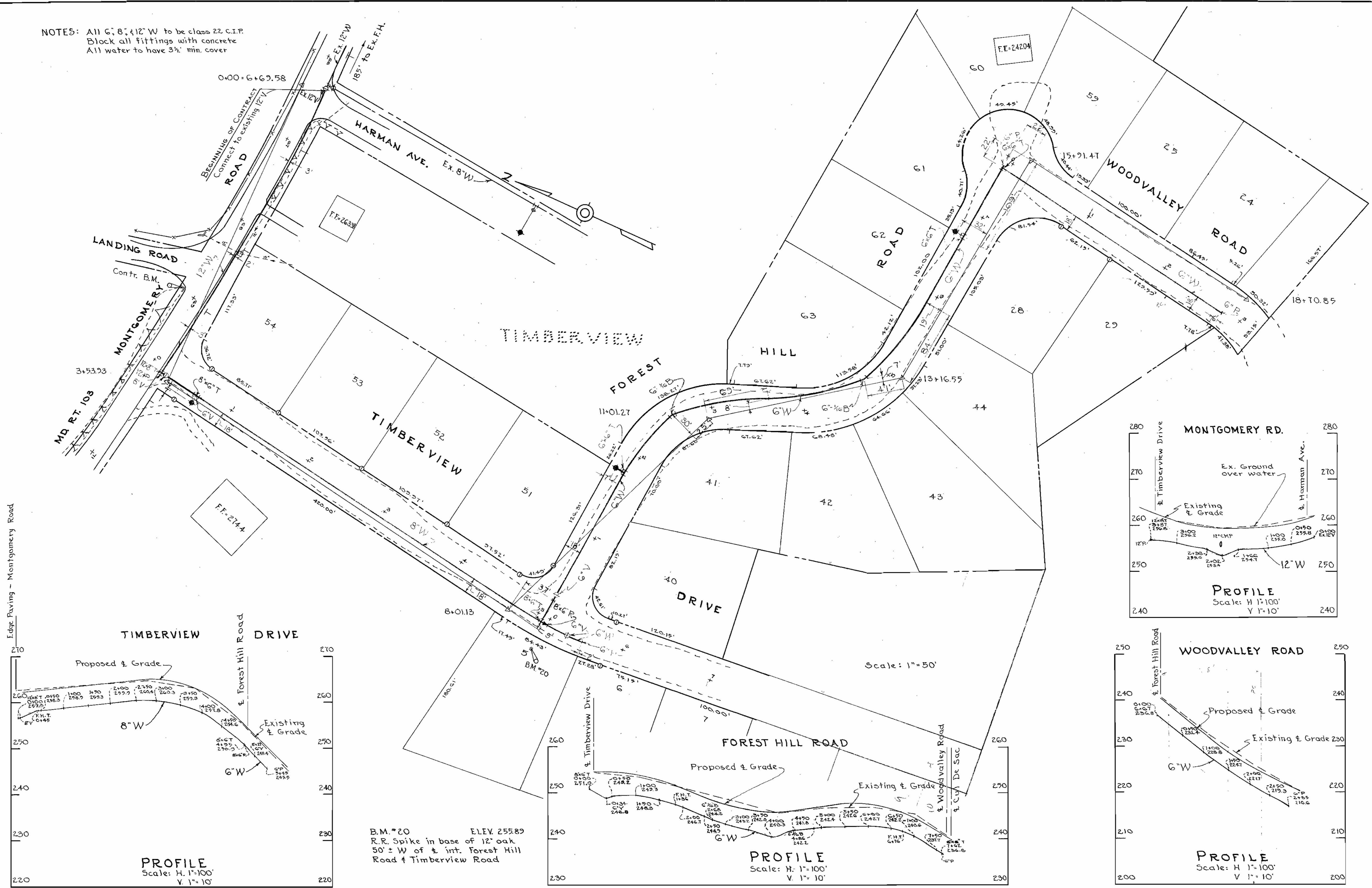
AS BUILT

WS 5W/2



WHITMAN, REQUARDT & ASSOCIATES ENGINEERS 1304 ST. PAUL ST. BALTIMORE, MARYLAND	HOWARD COUNTY METROPOLITAN COMMISSION June 17, 1957 <i>Carl W. Meyer</i> CHAIRMAN	CONTRACT NO. 5W	PLAN OF WATER MAINS	EXTENSION OF WATER SYSTEM IN ELKRIDGE SUB-DISTRICT	DRAWING NO. 2 OF 4 SCALE 1" = 50' AS BUILT
---	--	-----------------	---------------------	---	--

NOTES: All 6" 8' x 12" W to be class 22 C.I.P.
 Block all fittings with concrete
 All water to have 3/4" min. cover

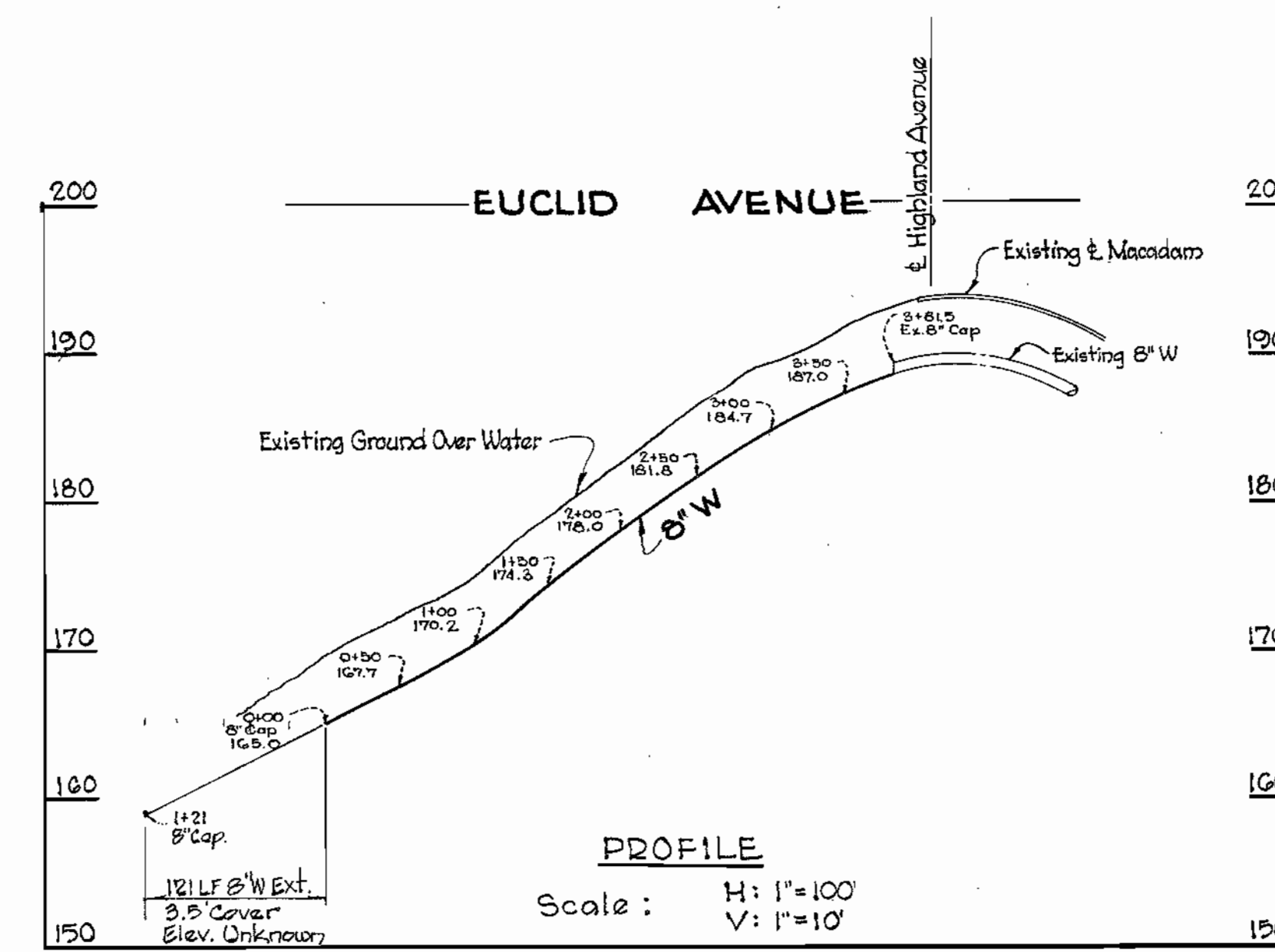
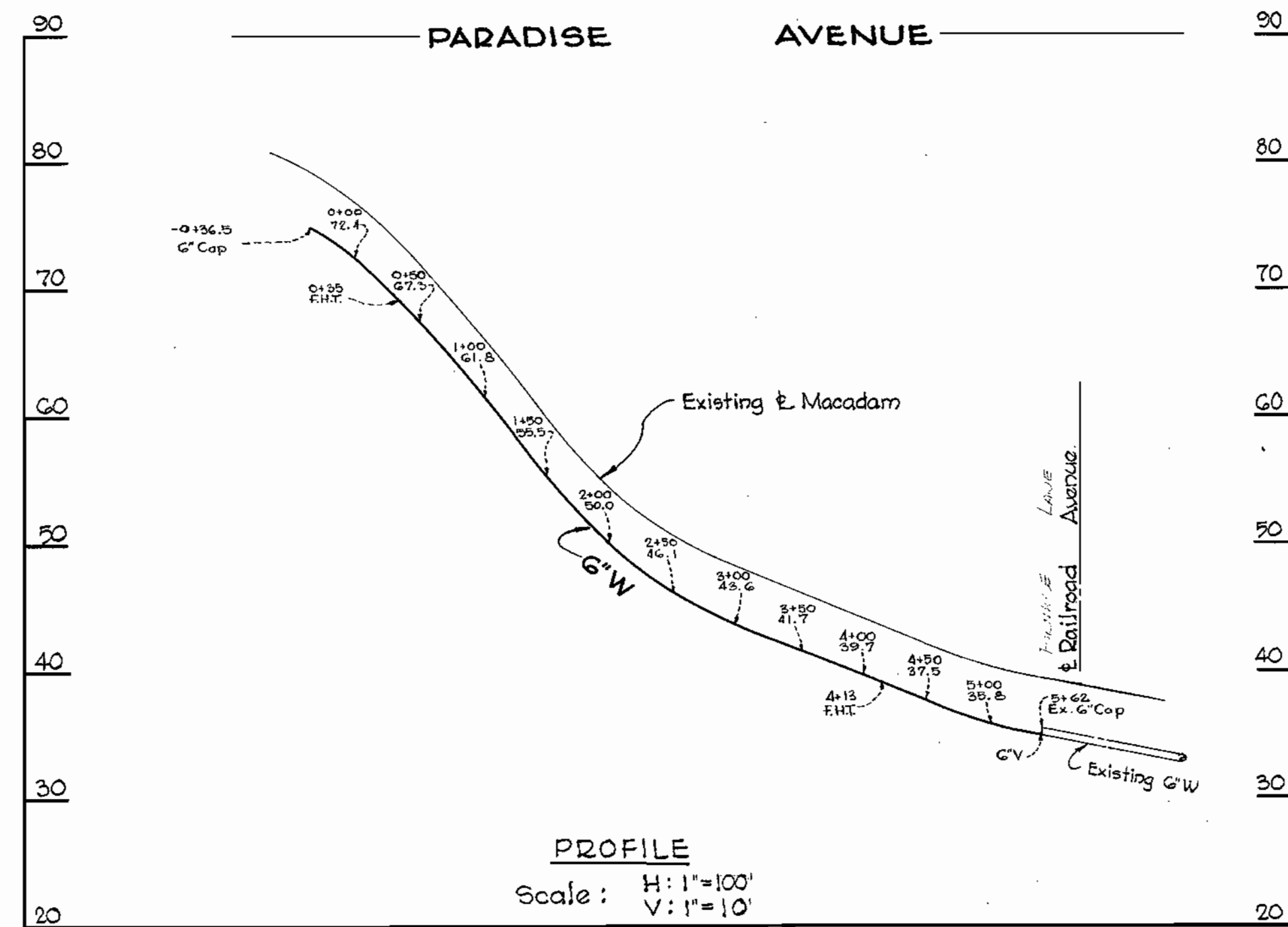
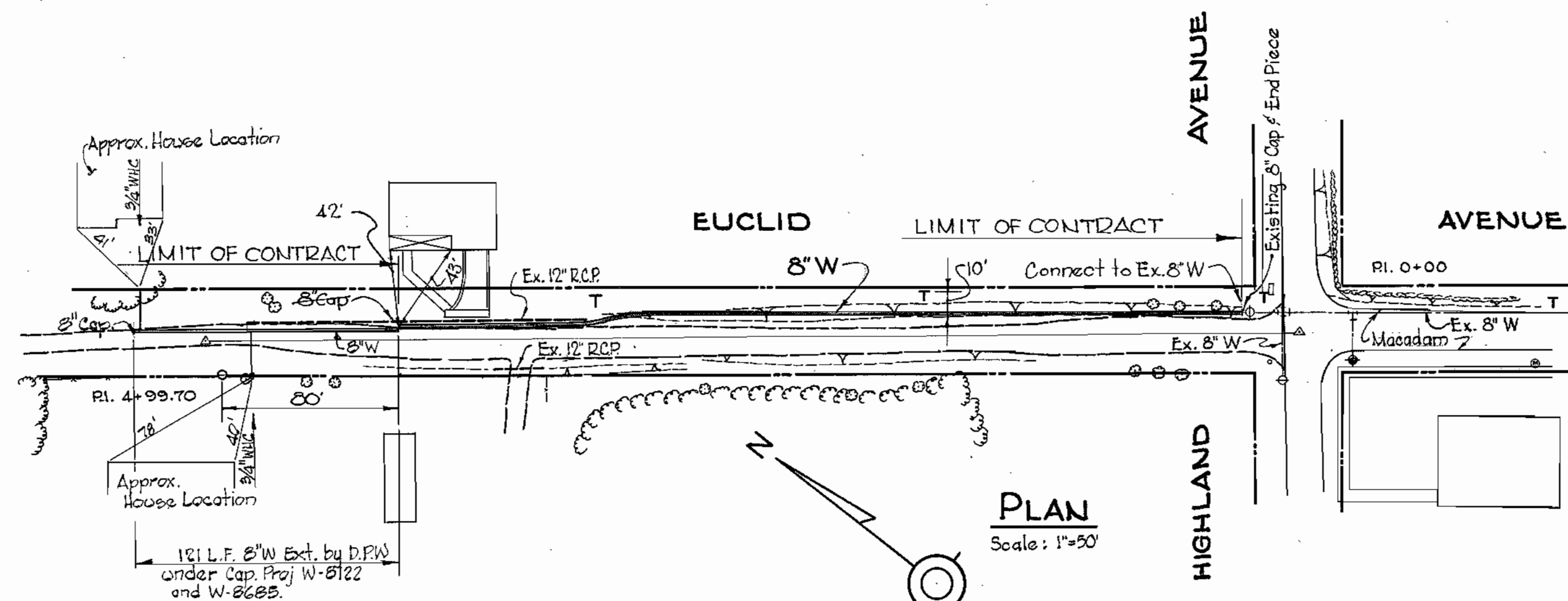
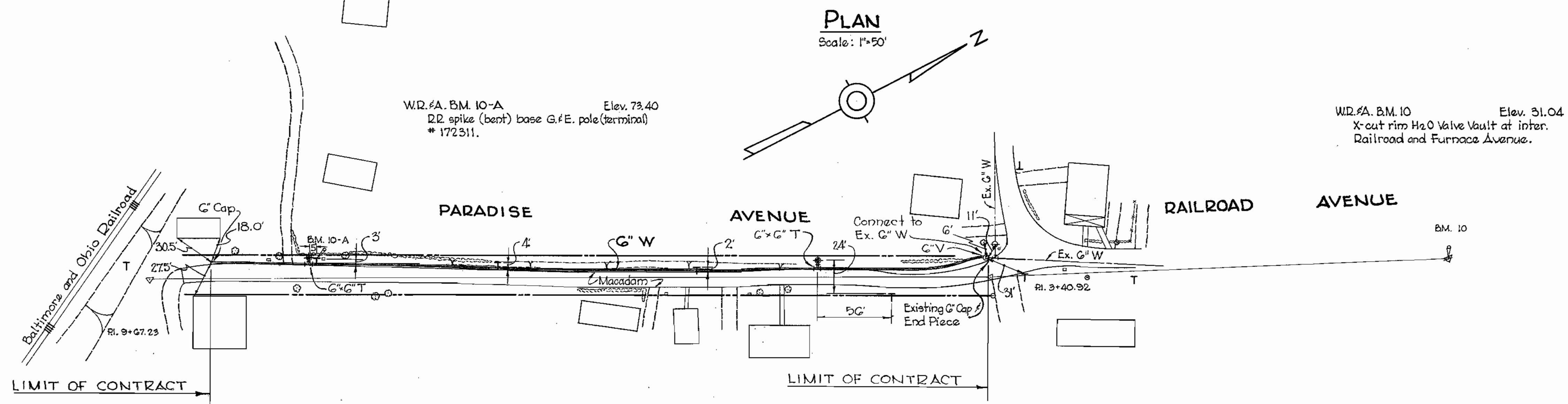


B.M. #20 ELEV. 255.89
 R.R. Spike in base of 12" oak
 50' ± W of & int. Forest Hill
 Road & Timberview Road

WS SW/2A

WHITMAN, REQUARDT & ASSOCIATES ENGINEERS 1304 ST. PAUL ST. BALTIMORE, MARYLAND	HOWARD COUNTY METROPOLITAN COMMISSION June 30, 1958 DATE	CONTRACT NO. 5W	PLAN & PROFILE OF WATER MAINS	EXTENSION OF WATER SYSTEM IN ELK RIDGE SUB-DISTRICT	DRAWING NO. 2A OF 4 SCALE AS SHOWN
---	--	-----------------	----------------------------------	--	--

AS BUILT



WHITMAN, REQUARDT & ASSOCIATES
ENGINEERS
1304 ST. PAUL ST.
BALTIMORE, MARYLAND

HOWARD COUNTY METROPOLITAN COMMISSION
June 17, 1937
DATE
Carl W. Meyer
CHAIRMAN

CONTRACT NO. 5W

PLAN & PROFILE
OF WATER MAINS

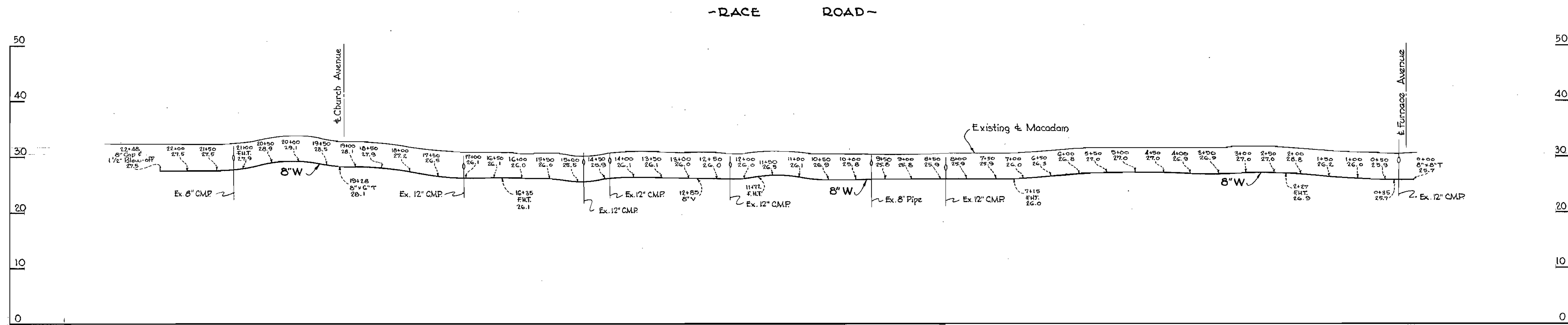
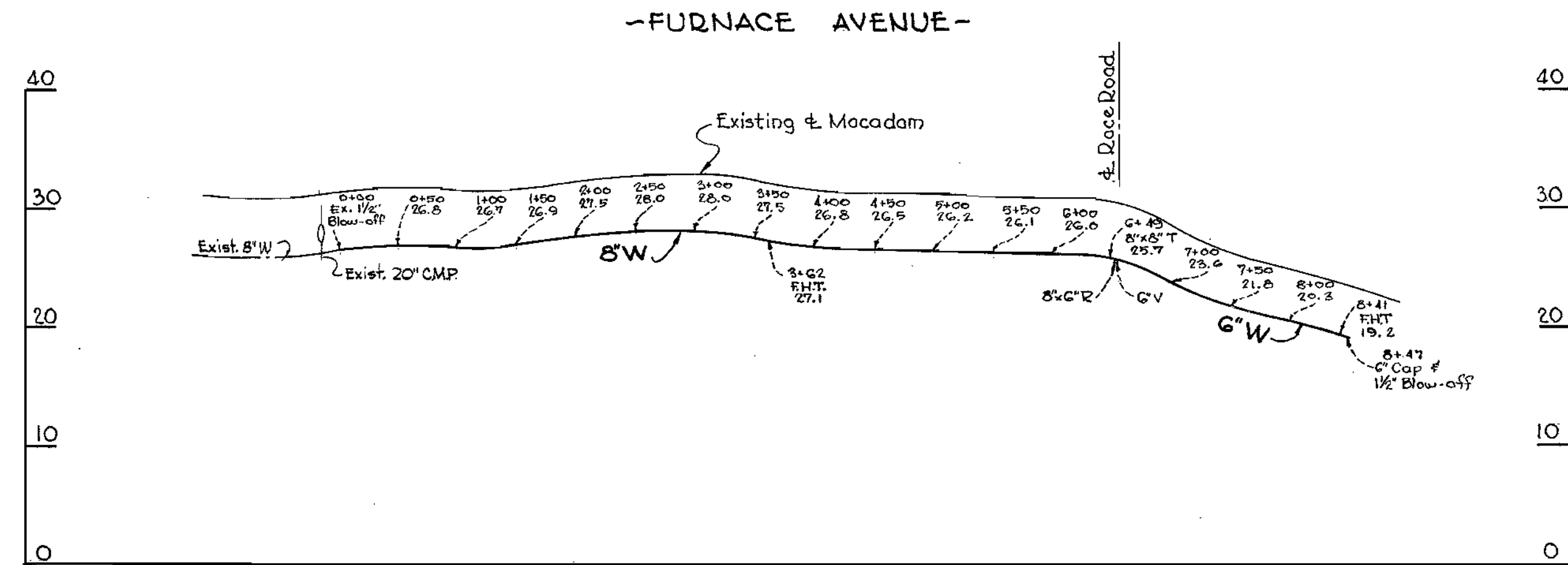
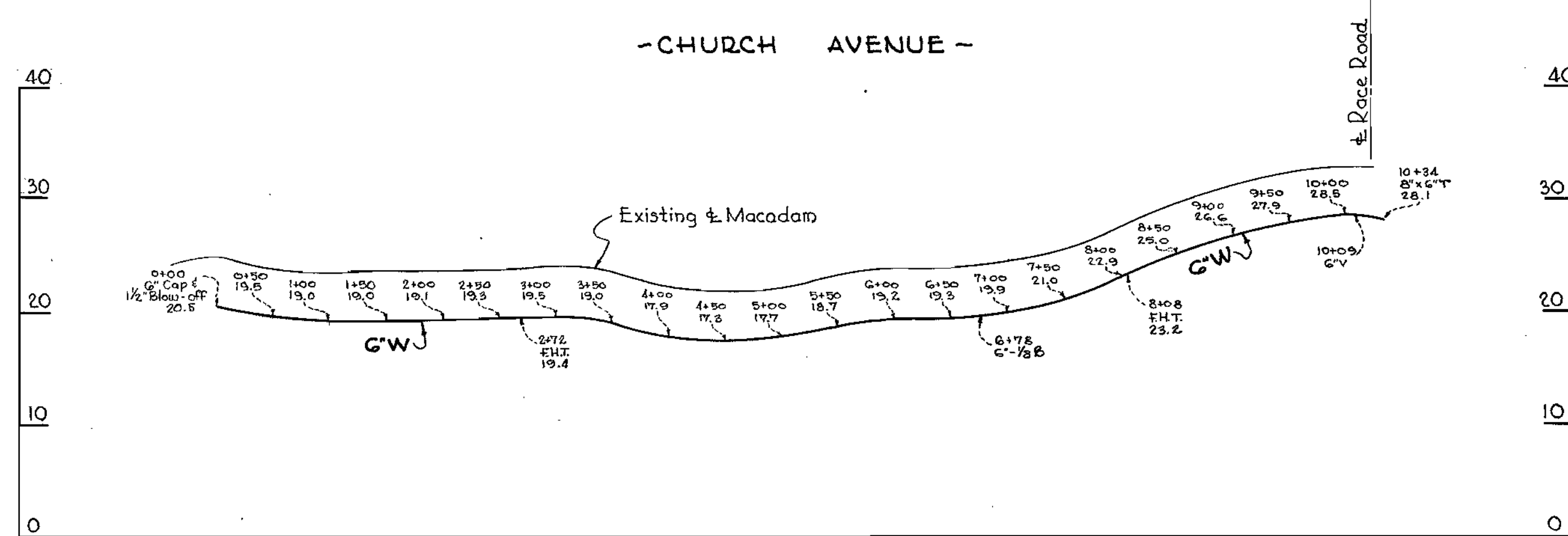
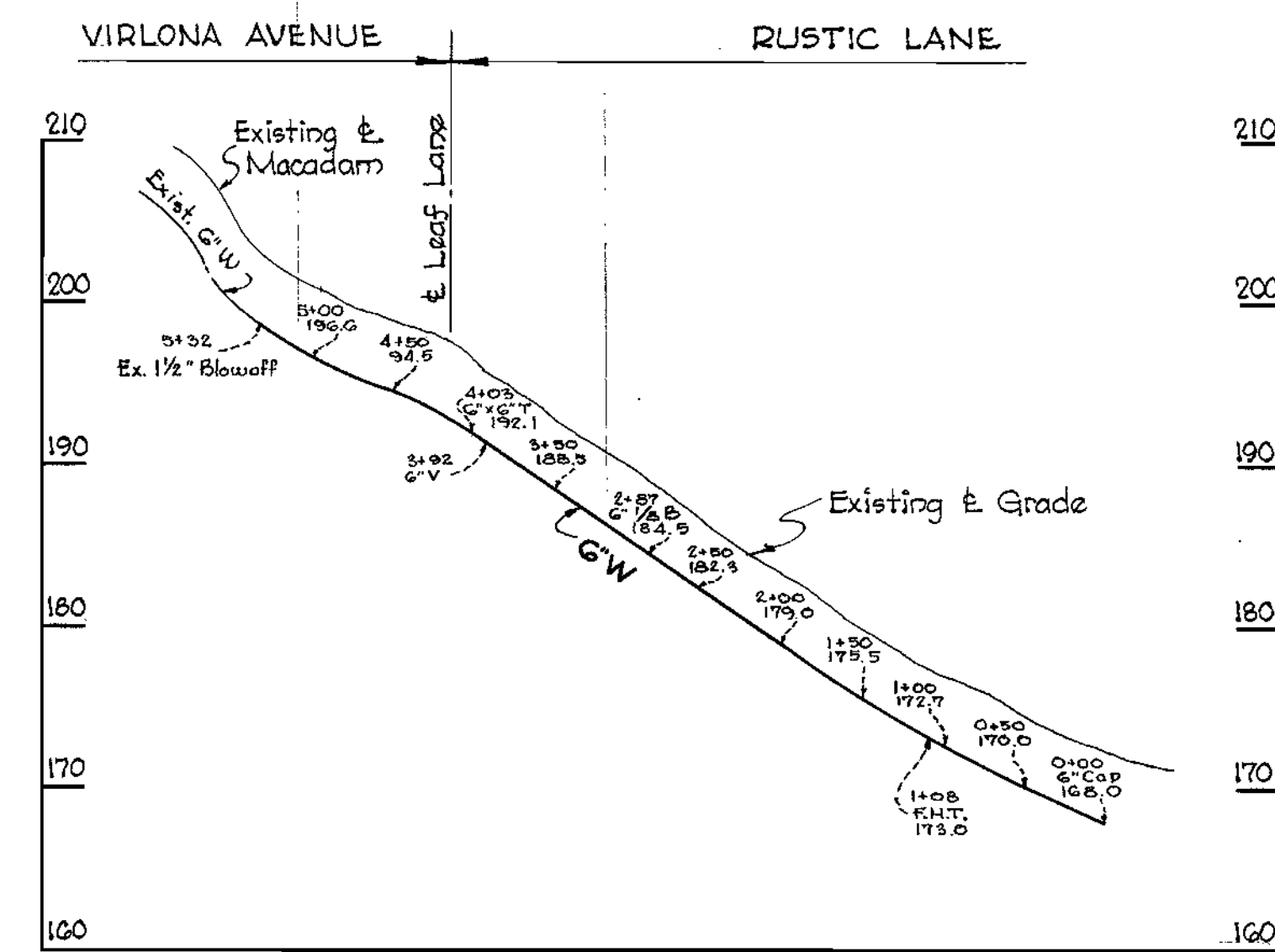
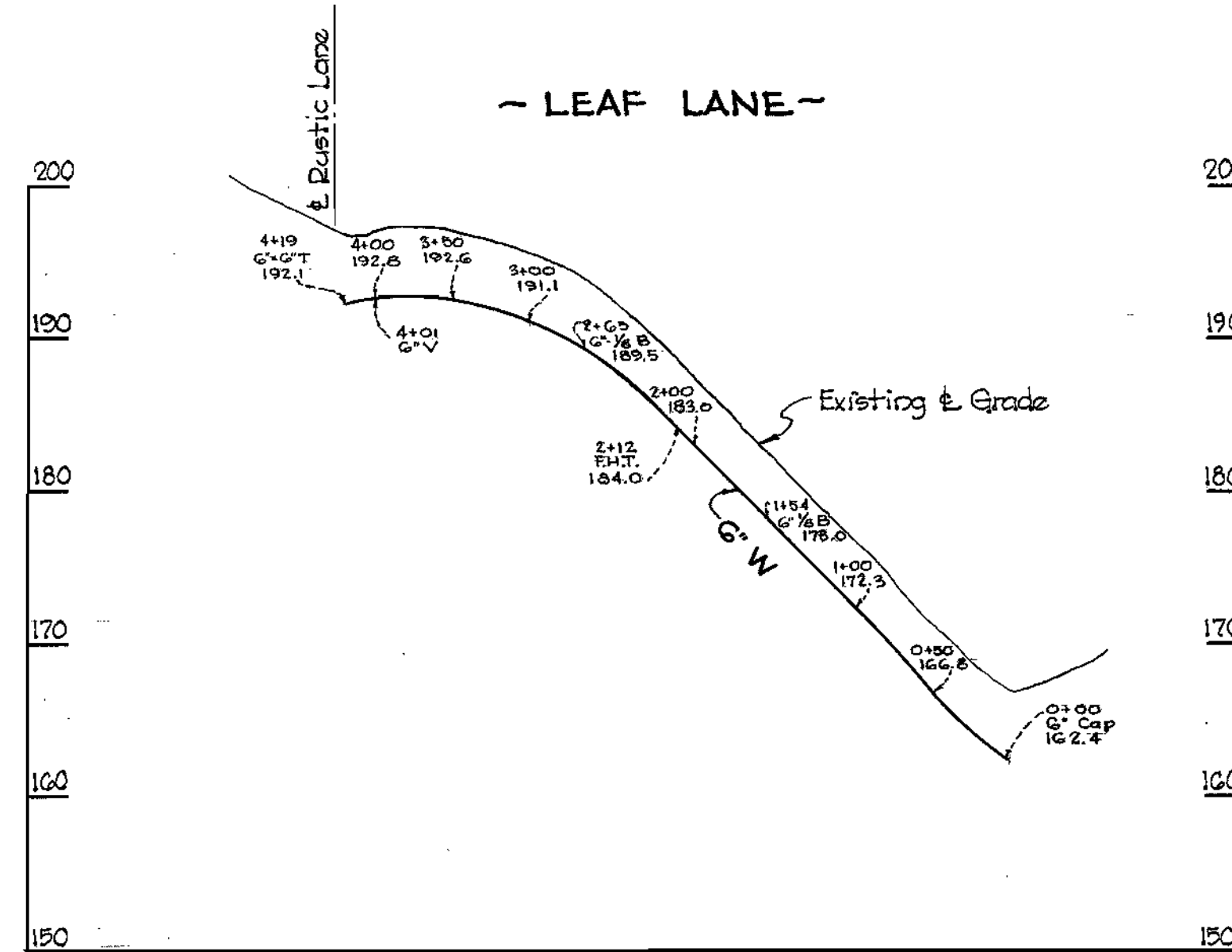
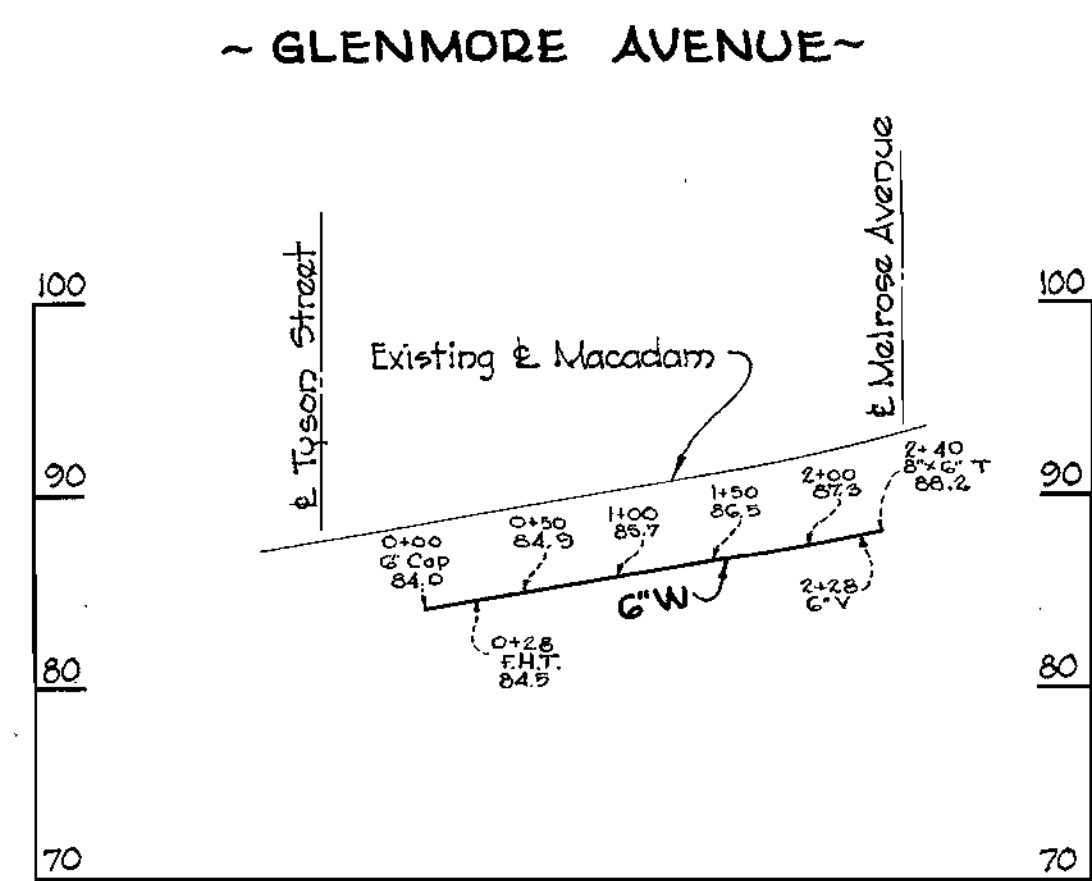
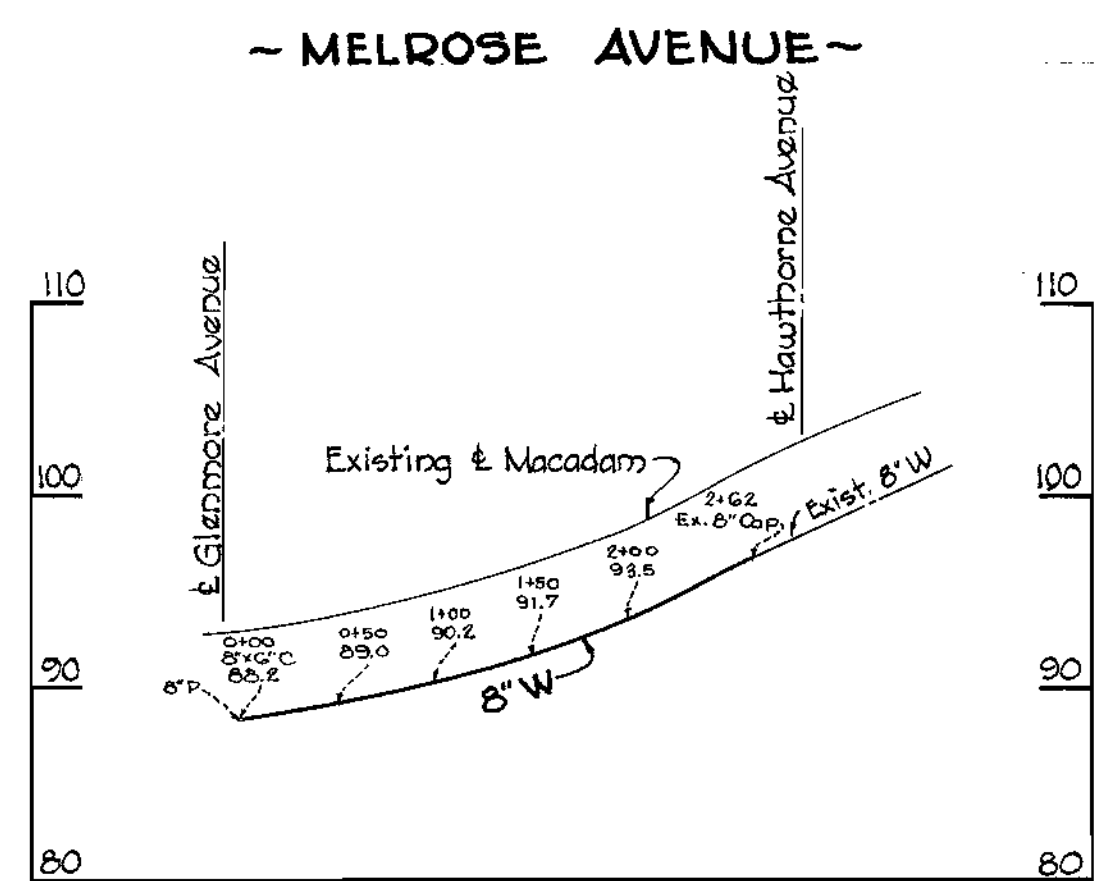
EXTENSION OF WATER SYSTEM
IN ELKRIDGE SUB-DISTRICT

DRAWING
NO. 3
OF 4
SCALE
AS
SHOWN

AS BUILT FINAL JULY 26, 1937

F.S. # 2201

WS 5W/3



WHITMAN, REQUARDT & ASSOCIATES
ENGINEERS
1304 ST. PAUL ST.
BALTIMORE, MARYLAND

HOWARD COUNTY METROPOLITAN COMMISSION
DATE 17, 1957
CHAIRMAN

CONTRACT NO. 5W

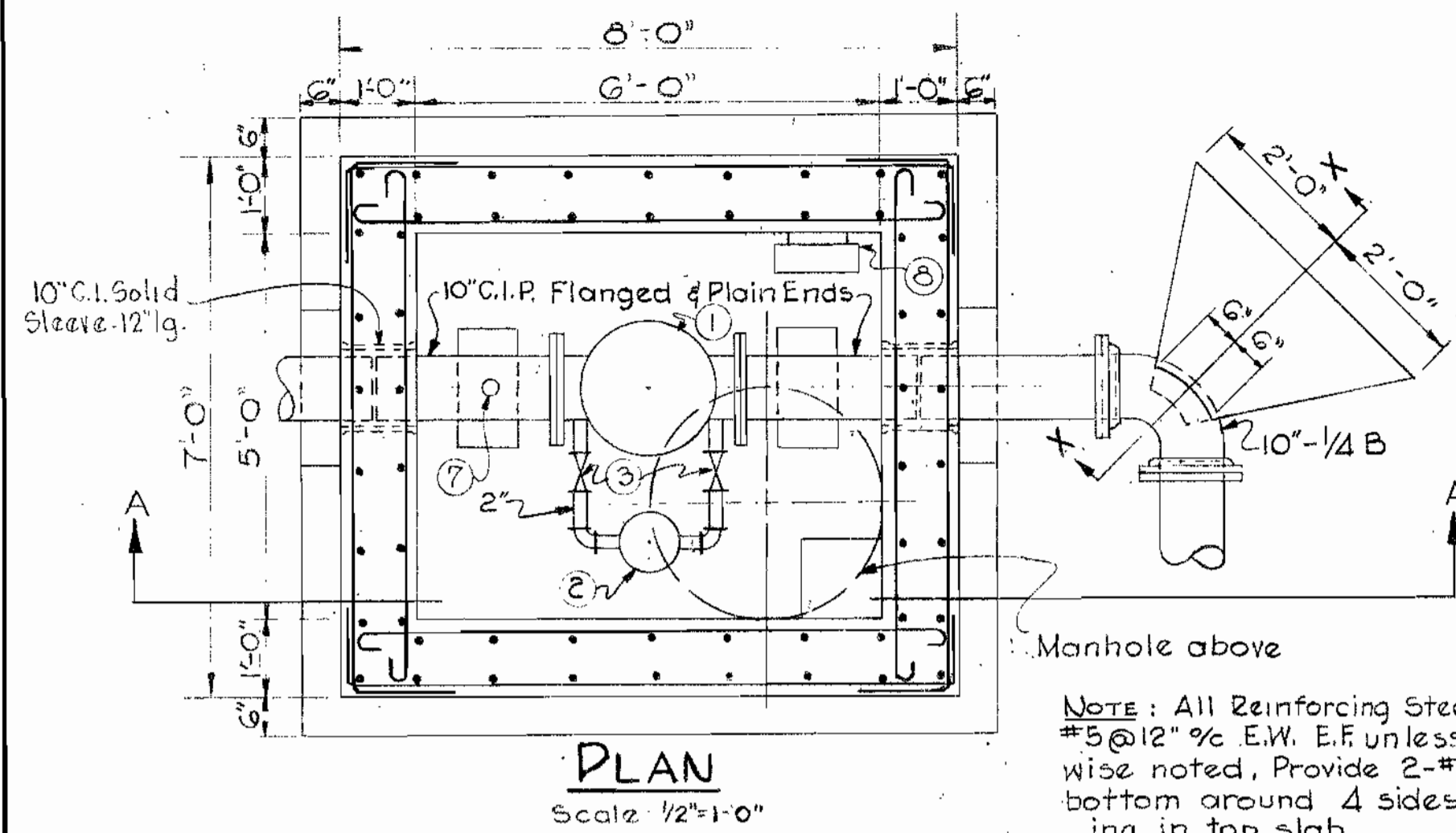
PROFILE
OF WATER MAINS

EXTENSION OF WATER SYSTEM
IN ELKRIDGE SUB-DISTRICT

DRAWING
NO. 4
OF 4

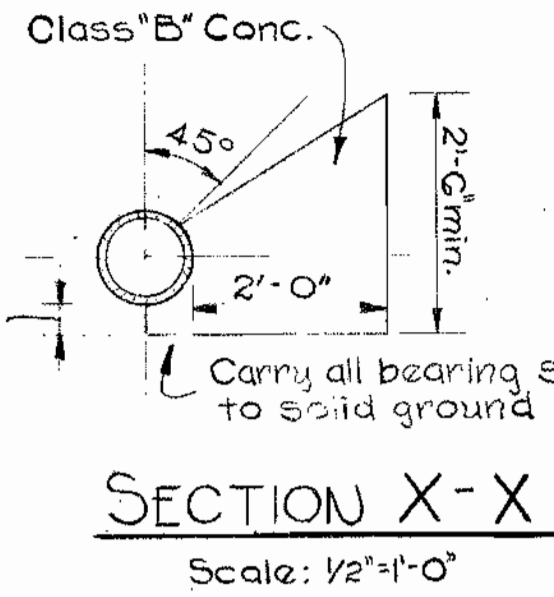
SCALE
H-1 1/2"=100'
V-1 1/2"=10'

AS BUILT FINAL JULY 26, 1957

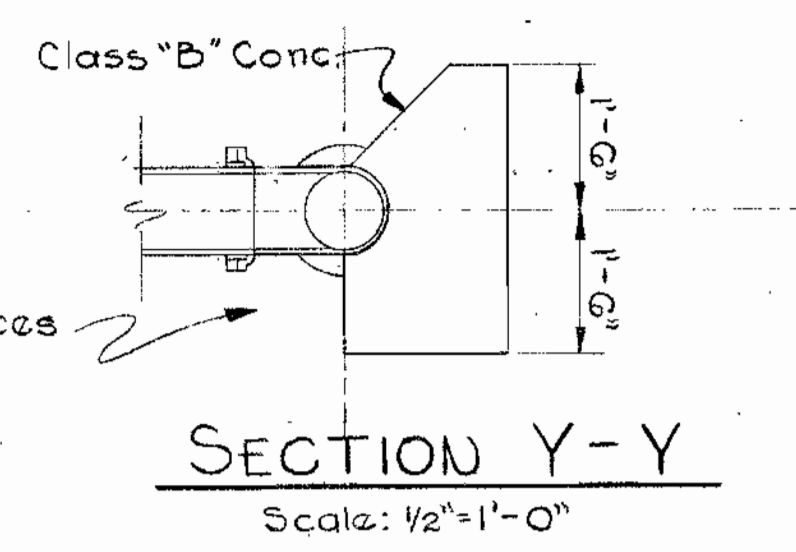


PLAN
Scale: 1/2"=1'-0"

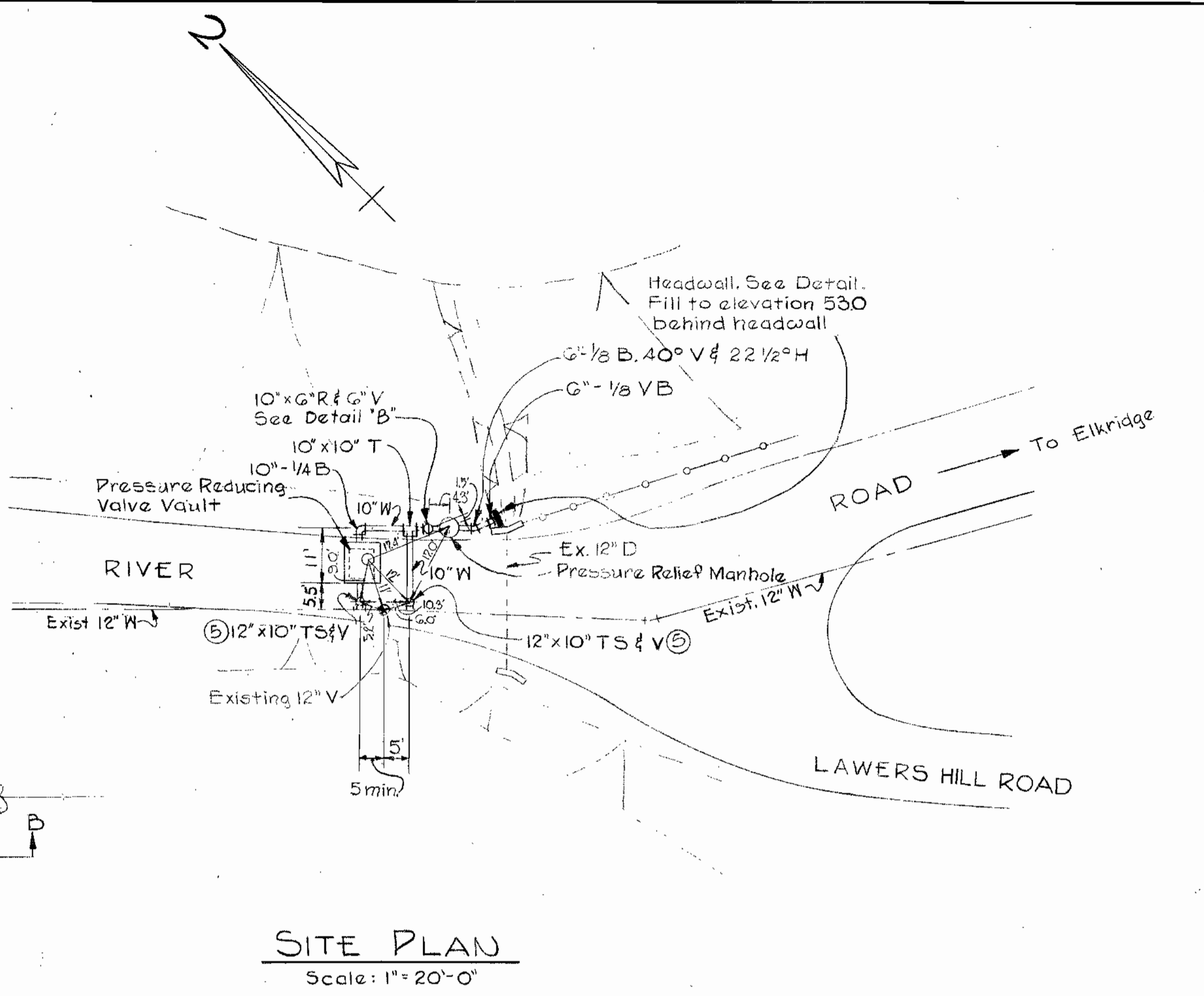
NOTE: All Reinforcing Steel to be #5 @ 12" E.W. E.F. unless otherwise noted. Provide 2-#6 top & bottom around 4 sides of opening in top slab.



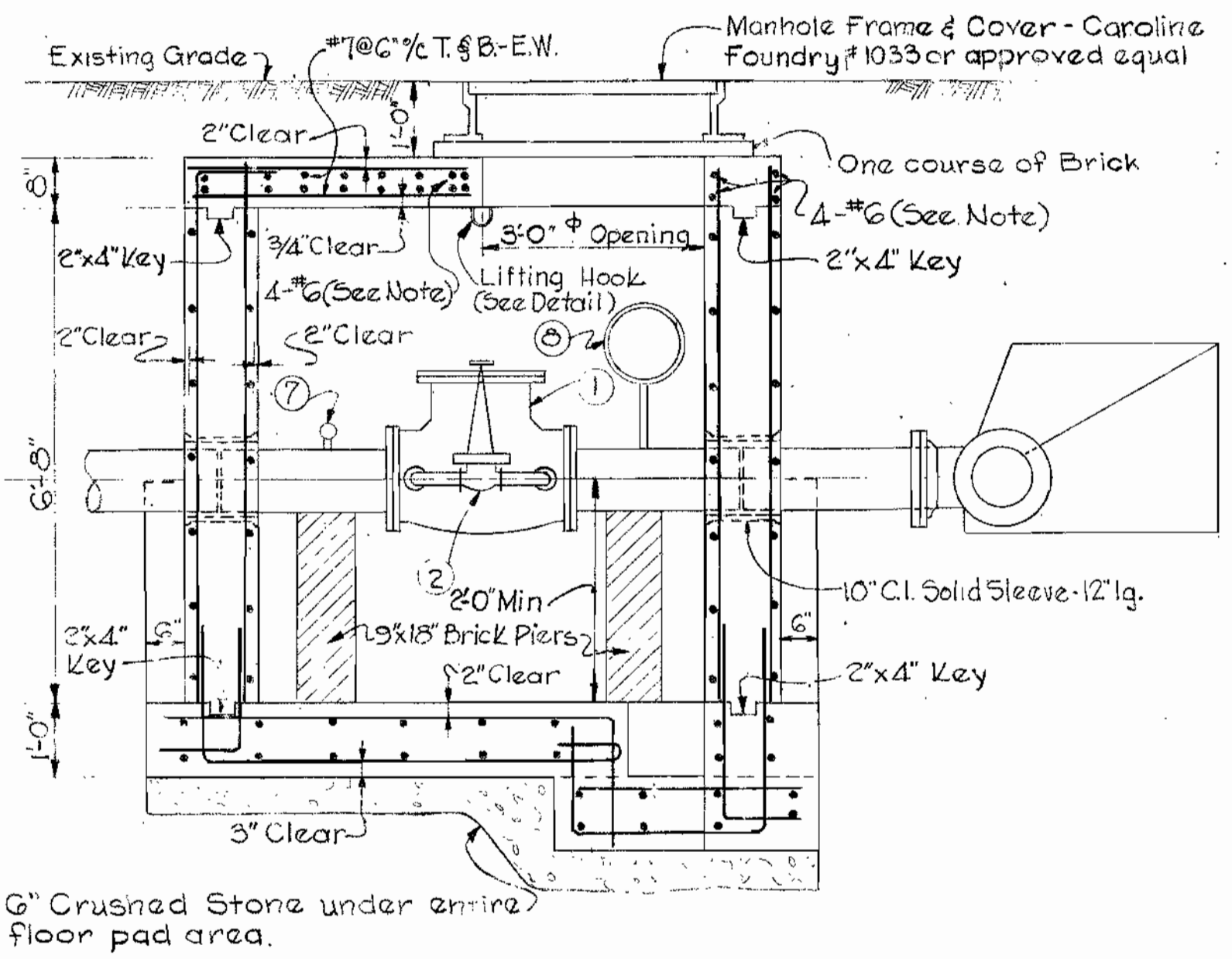
SECTION X-X
Scale: 1/2"=1'-0"



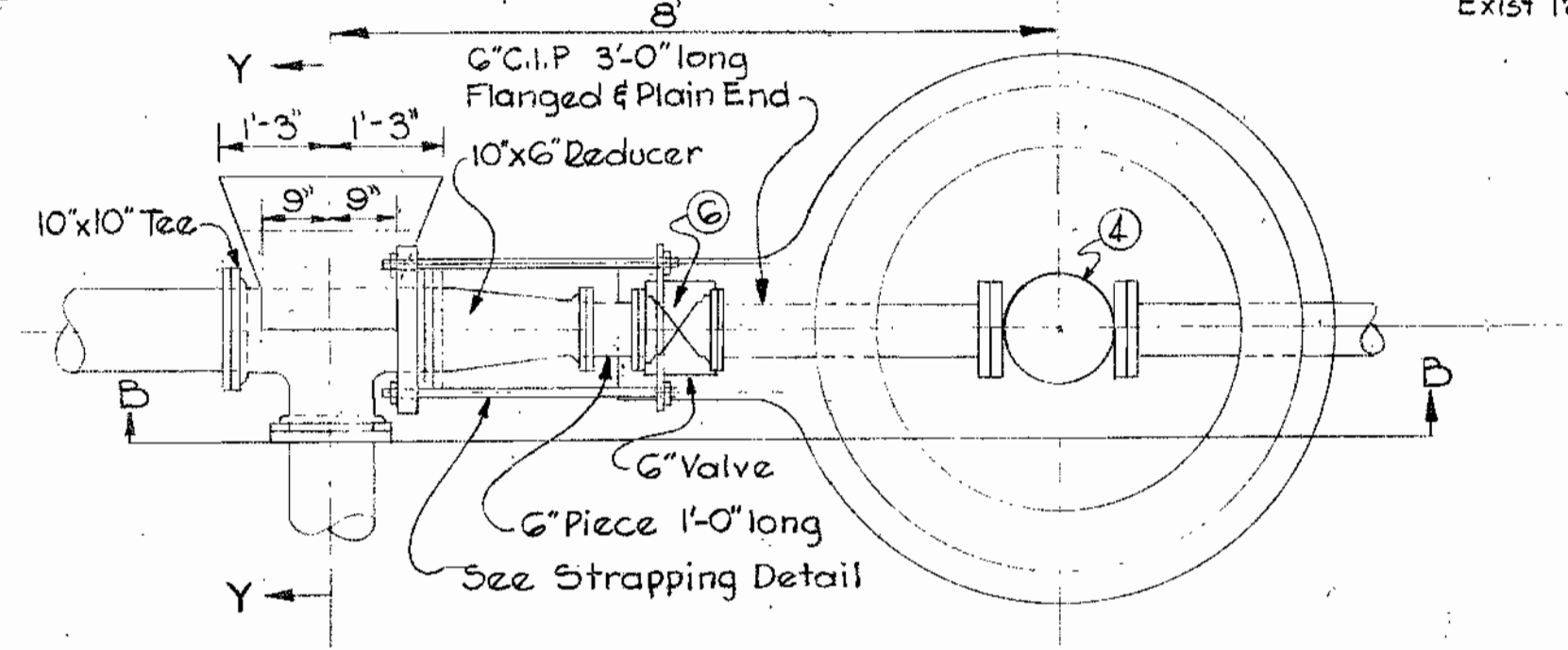
SECTION Y-Y
Scale: 1/2"=1'-0"



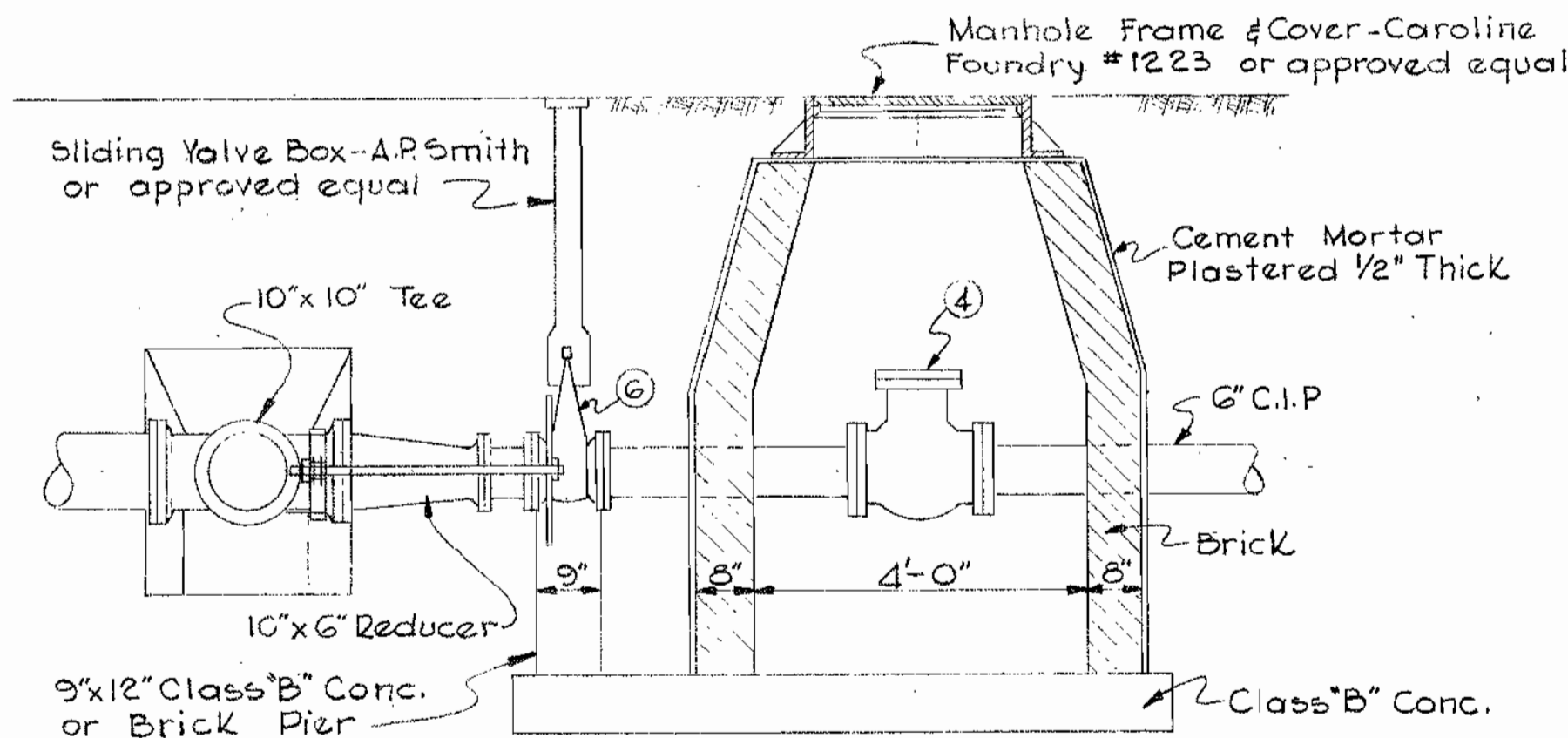
SITE PLAN
Scale: 1"=20'-0"



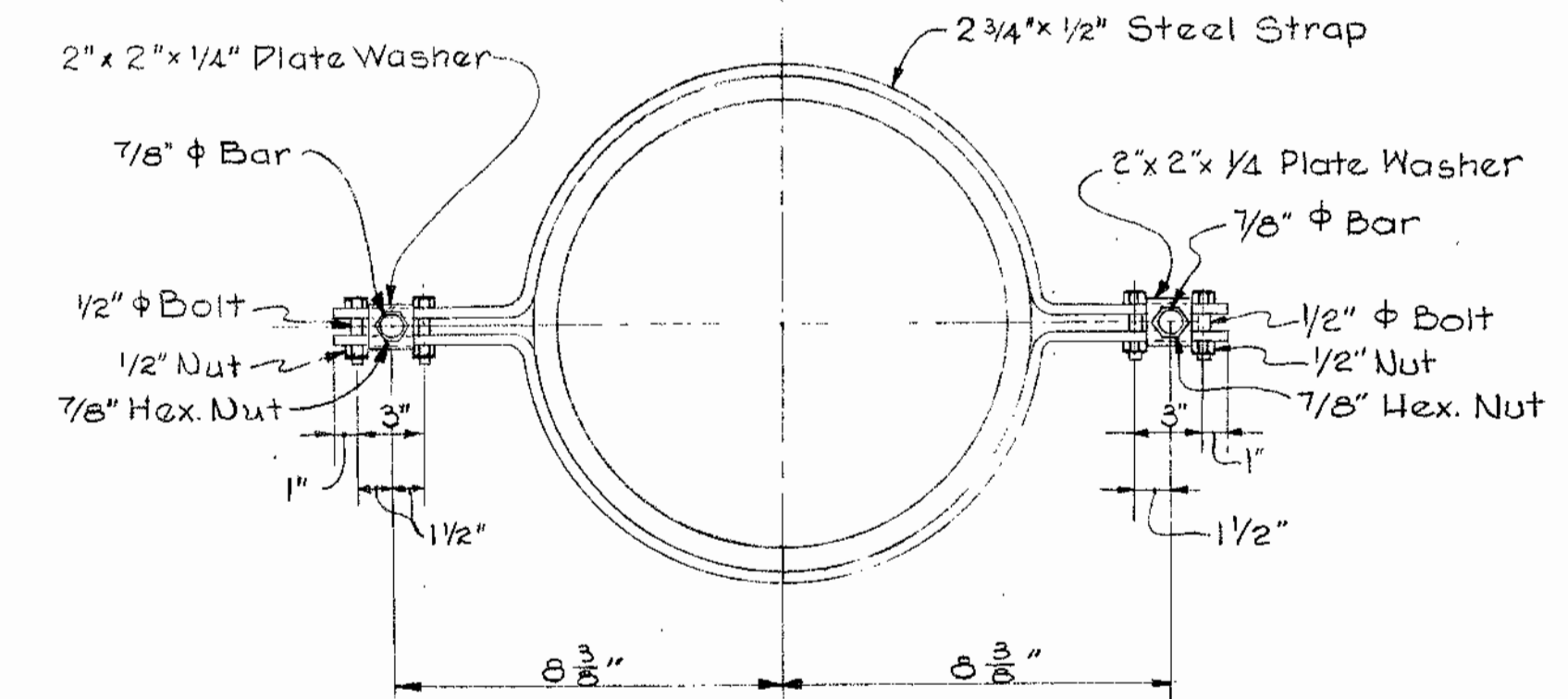
SECTION A-A
Scale: 1/2"=1'-0"



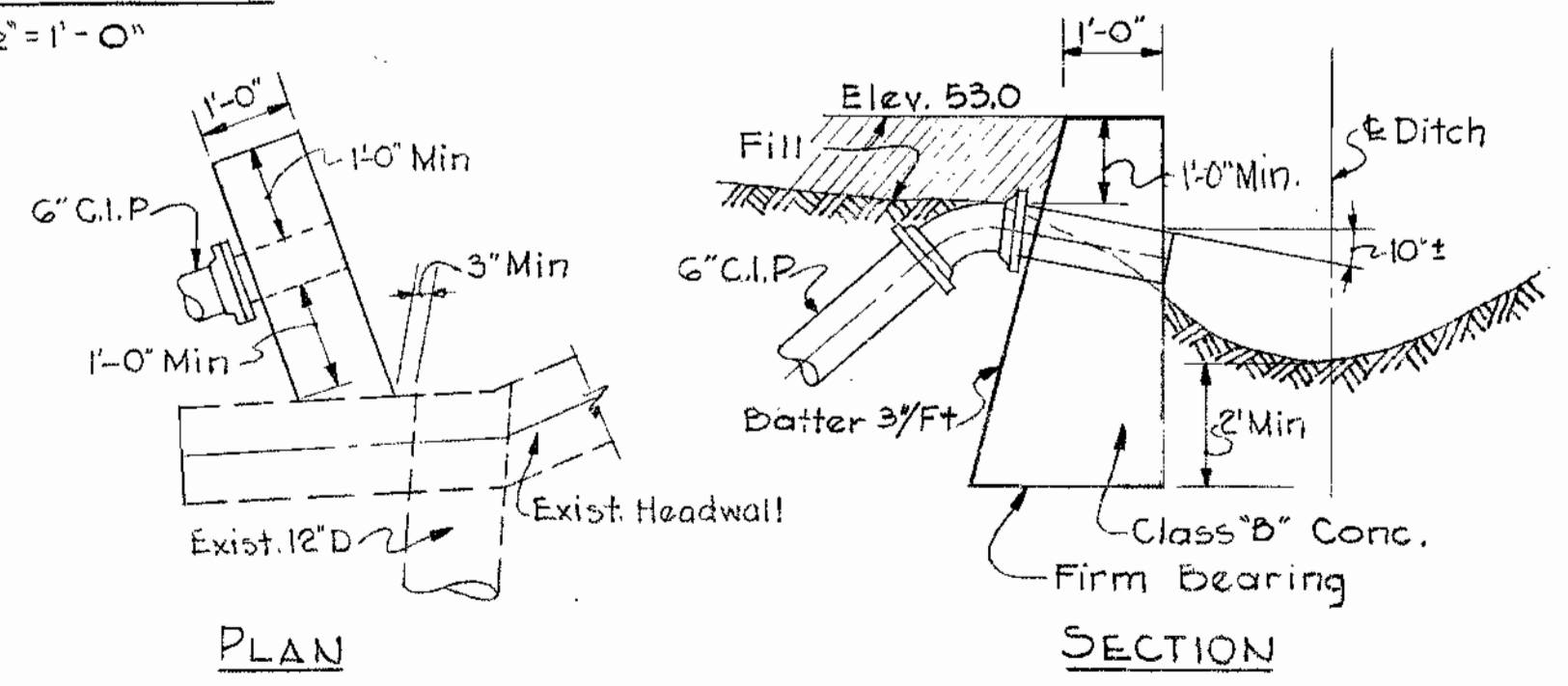
DETAIL 'B'
Scale: 1/2"=1'-0"



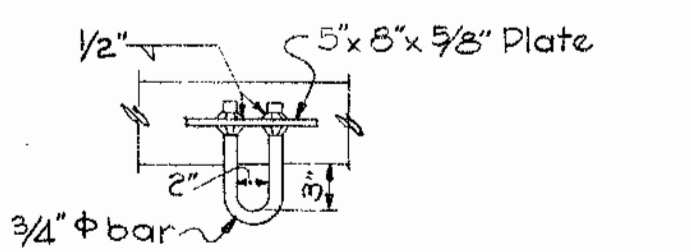
SECTION B-B
Scale: 1/2"=1'-0"



STRAPPING DETAIL
Scale: 3"=1'-0"



DETAIL OF HEADWALL
Scale: 1/2"=1'-0"



DETAIL OF LIFTING HOOK
Scale: 1"=1'-0"

Item	Qty	Size	DESCRIPTION
1	1	10"	Water Pressure Reducing Valve, Flanged Ends Golden-Anderson 45U or Approved Equal
2	1	2"	Water Pressure Reducing Valve, Screwed Ends Golden-Anderson 43U or Approved Equal
3	2	2"	Gate Valve, 0.5, 4V, Screwed Ends-A.P. Smith Figure 4620 or Approved Equal
4	1	6"	Water Pressure Relief Valve, Flanged Ends Golden-Anderson 6TU or Approved Equal
5	2	12"x10"	Tapping Sleeve & Valve, Mechanical Joint - A.P. Smith Figure 4000, Style 1 or Approved Equal
6	1	6"	Gate Valve, Mechanical Joint Ends N.E.S. A.P. Smith Figure 4000 or Approved Equal
7	1		Pressure Gauge, 0 to 300 psi, Foxboro Model MA or Approved Equal
8	1		Pressure Recorder & Indicator, 0 to 300 psi, 1-day Foxboro 731-B or Approved Equal

WHITMAN, REQUARDT & ASSOCIATES
ENGINEERS
1304 ST. PAUL ST.
BALTIMORE, MARYLAND

HOWARD COUNTY METROPOLITAN COMMISSION
DATE _____
Carl H. Meyer
CHAIRMAN

CONTRACT NO. 5W

PRESSURE REDUCING VAULT

EXTENSION OF WATER SYSTEM
IN ELKRIDGE SUB-DISTRICT

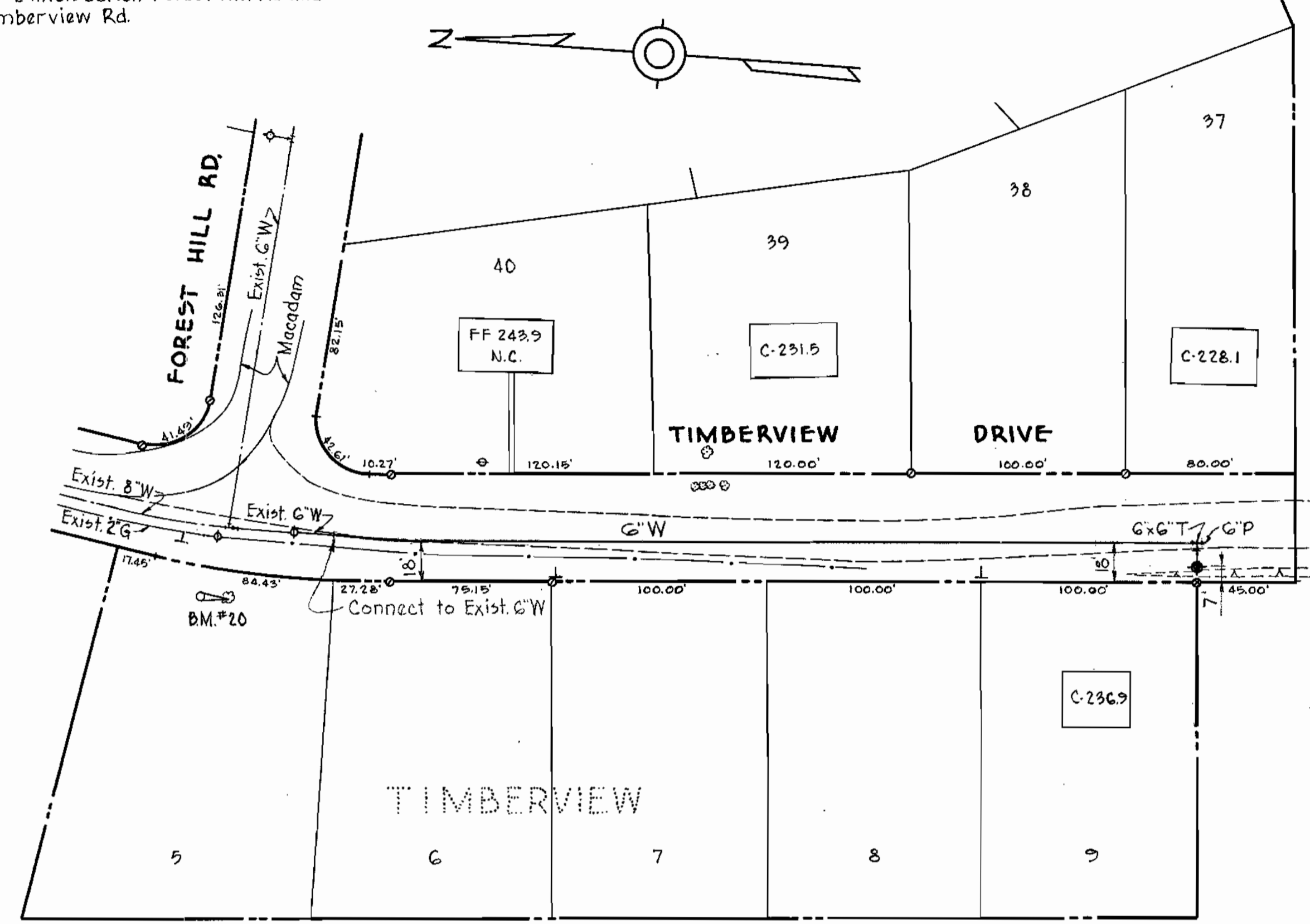
DRAWING NO. 4-A
OF 4

SCALE AS SHOWN

AS BUILT

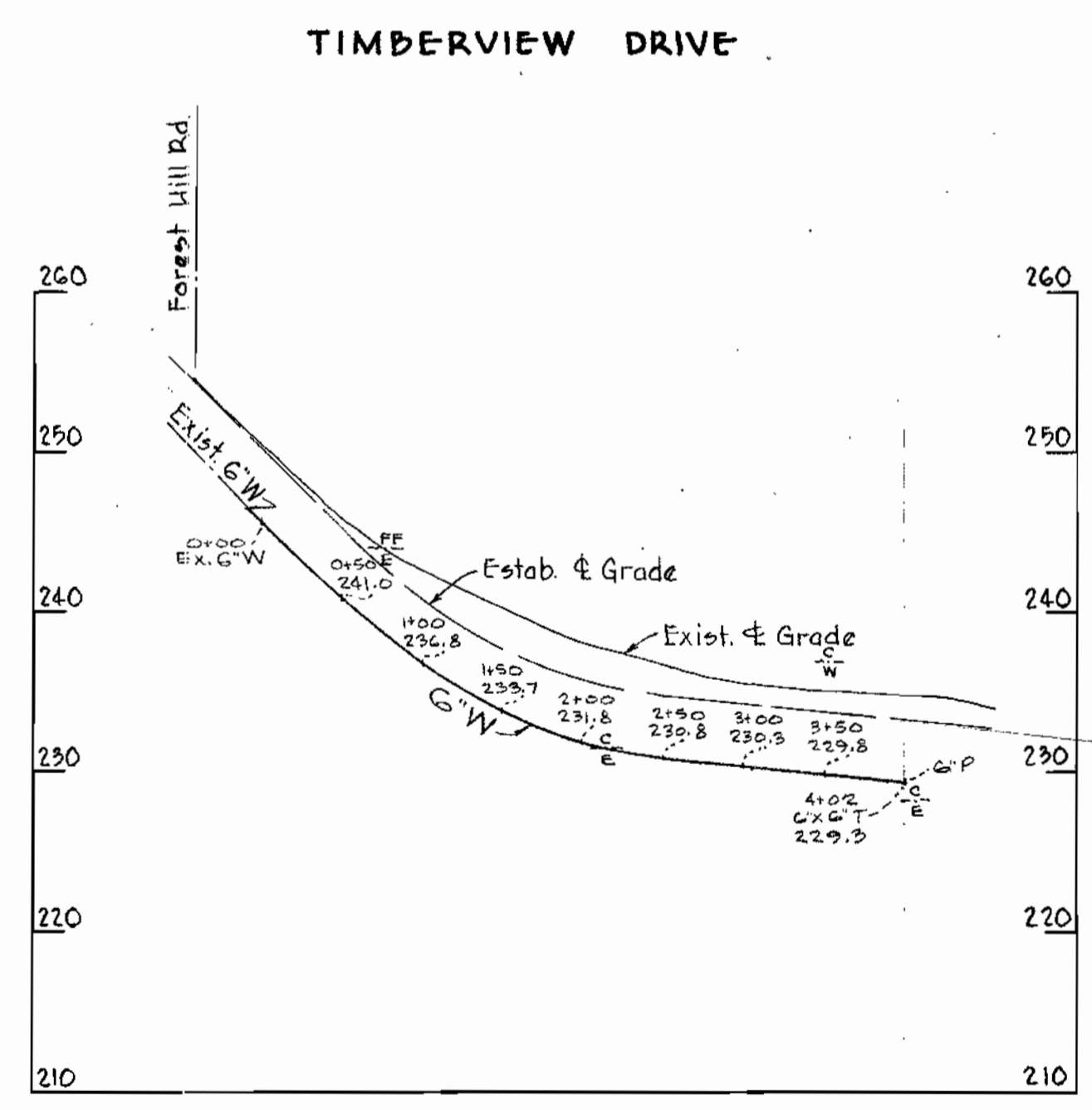
WS 5W/4A

B.M. #20 Elev. 255.89
 R.R. Spike in base of 12" Oak 50' West
 of ϕ intersection Forest Hill Rd and
 Timberview Rd.



PLAN
 Scale: 1" = 50'

Note:
 All G'W to be Class 22 C.I.P.
 Block all fittings with concrete
 All water to have 3.5' min. cover.



PROFILE
 Scale: Vert. 1" = 10'
 Horz. 1" = 100'

WHITMAN, REQUARDT & ASSOCIATES
 ENGINEERS
 1304 ST. PAUL ST.
 BALTIMORE, MARYLAND

HOWARD COUNTY METROPOLITAN COMMISSION
 Jan. 18, 1960
Carl W. Meyer
 CHAIRMAN

CONTRACT NO. 5-W

PLAN & PROFILE
 OF WATER MAINS

EXTENSION OF WATER SYSTEM
 IN ELKRIDGE SUB-DISTRICT

DRAWING NO. 1	SCALE AS SHOWN
OF 1	

JAN. 18, 1960

WS 5W/1 REV.

WO 4640-2