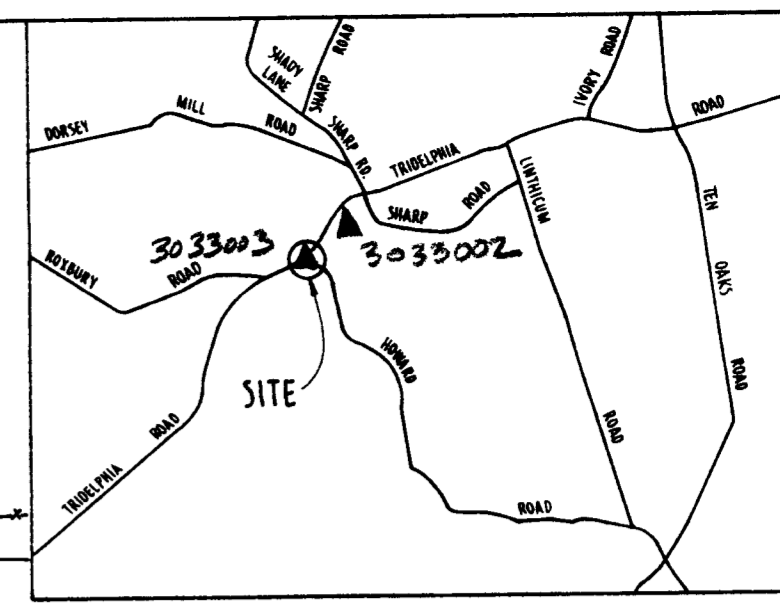


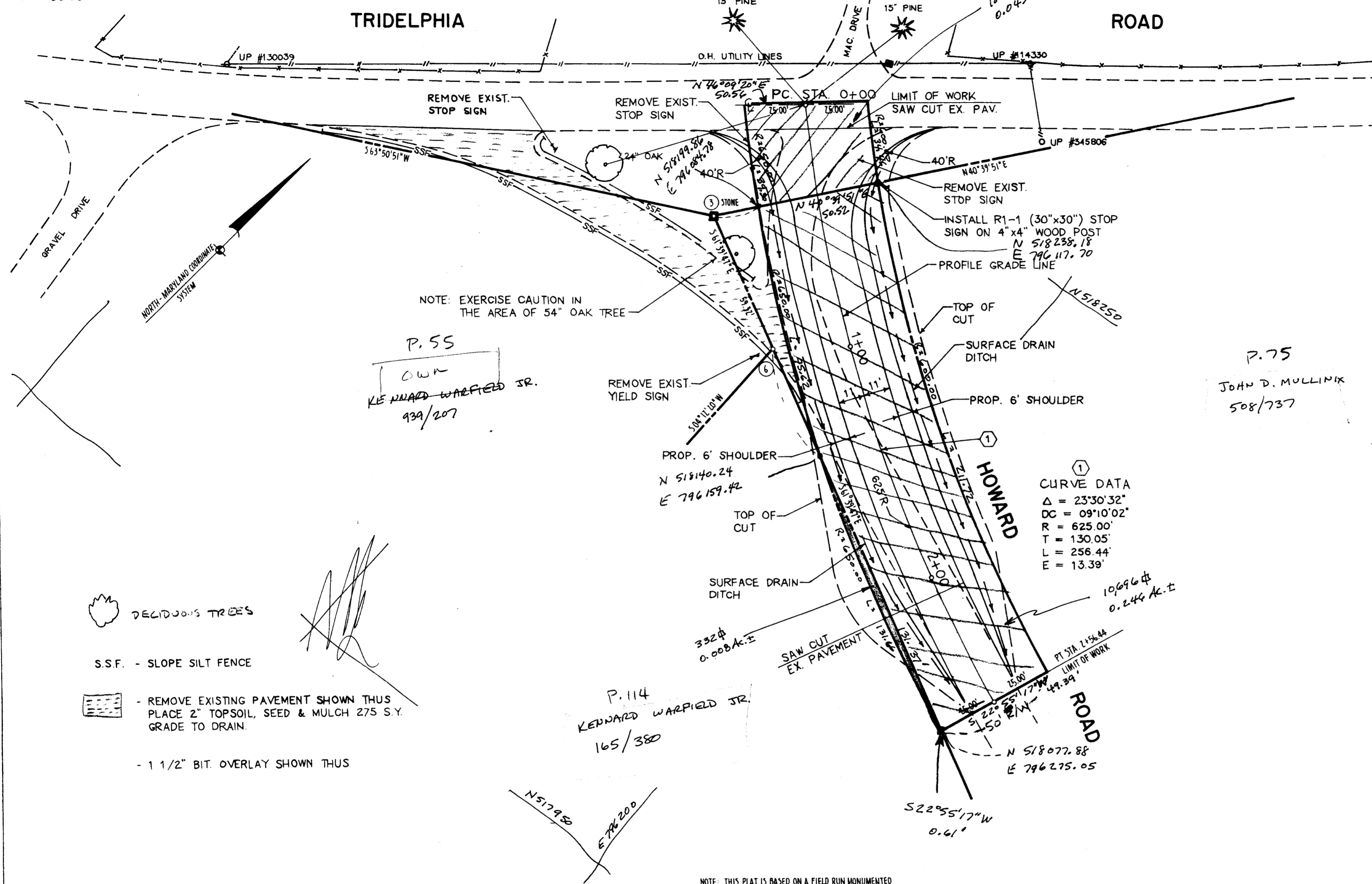
COORDINATES

NO.	NORTH	EAST
3	518186.620	796073.413
6	518158.463	796125.625

NOTE: COORDINATES BASED ON NAD 27, MARYLAND COORDINATE SYSTEM AS PROJECTED BY HOWARD COUNTY GEODETIC CONTROL STATIONS NO. 3233003 AND NO. 3233002



VICINITY MAP
SCALE: 1"=4000'



NOTE: EXERCISE CAUTION IN THE AREA OF 54" OAK TREE

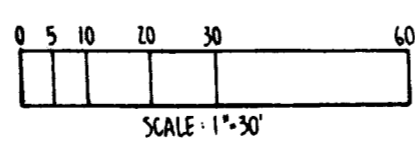
DECIDUOUS TREES

S.S.F. - SLOPE SILT FENCE

- REMOVE EXISTING PAVEMENT SHOWN THUS PLACE 2" TOPSOIL, SEED & MULCH 275 S.Y. GRADE TO DRAIN.

- 1 1/2" BIT. OVERLAY SHOWN THUS

NOTE: THIS PLAT IS BASED ON A FIELD RUN MONUMENTED BOUNDARY SURVEY PERFORMED ON OR ABOUT BY HOWARD COUNTY BUREAU OF ENGINEERING.



APPROVED: DEPARTMENT OF PUBLIC WORKS	REVISIONS	
CHIEF: BUREAU OF ENGINEERING		
CHIEF: SURVEY AND DRAFTING DIVISION		
CHIEF: REAL ESTATE SERVICES DIVISION		

JEFFERSON D. HOBBS II
PROPERTY LINE SURVEYOR
MARYLAND REG. No. 362

HOWARD COUNTY DEPARTMENT OF PUBLIC WORKS
FEE SIMPLE ACQUISITION

HOWARD COUNTY, MARYLAND

PROJECT NAME: TRIDELPHIA ROAD AT HOWARD ROAD: SCALE: 1"=30'
INTERSECTION IMPROVEMENT SHEET No.: 1
JOB No.: 92007
DATE: _____ PROJECT No.: T-7063-66 PLAT No.: _____

SPT7063 GG-005