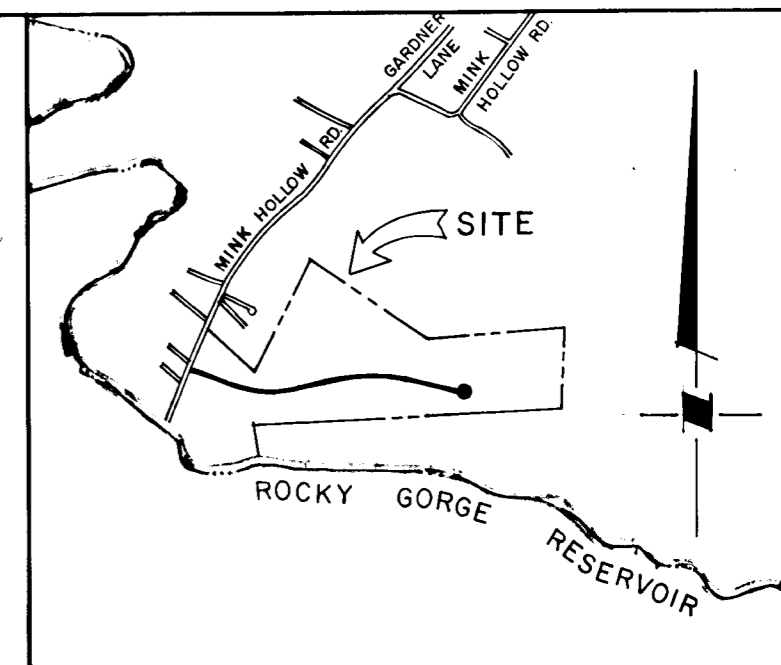


COORDINATES TABLE		
STATION	NORTH	EAST
STA. 0+00	486547.41	800706.86
STA. 0+15.56	486545.79	800722.33
STA. 0+48.92 PC.	486542.31	800755.50
STA. 2+46.83 PT.	486487.73	800944.67
STA. 5+27.51 PC.	486363.72	801196.47
STA. 6+45.26 PT.	486342.97	801310.84
STA. 7+45.24 PC.	486352.83	801410.33
STA. 8+68.52 PT.	486380.95	801529.99
STA. 9+46.28 PC.	486408.56	801602.69

CURVE DATA						
NO	DELTA	RADIUS	TAN	ARC	CHORD BEARING & DISTANCE	
1	20°-14'-42"	560.12'	100.00'	197.91'	S 73°-54'-12" E	196.89'
2	31°-52'-32"	211.65'	60.44'	117.75'	S 79°-43'-07" E	116.23'
3	15°-08'-16"	466.60'	62.00'	123.28'	N 76°-46'-29" E	122.92'

NOTE: COORDINATES SHOWN HEREON ARE BASED ON HOWARD COUNTY GEODETIC CONTROL STATION NO. 2234003, 2334004, 2234005 AND 2335003



VICINITY MAP  
SCALE: 1" = 2000'

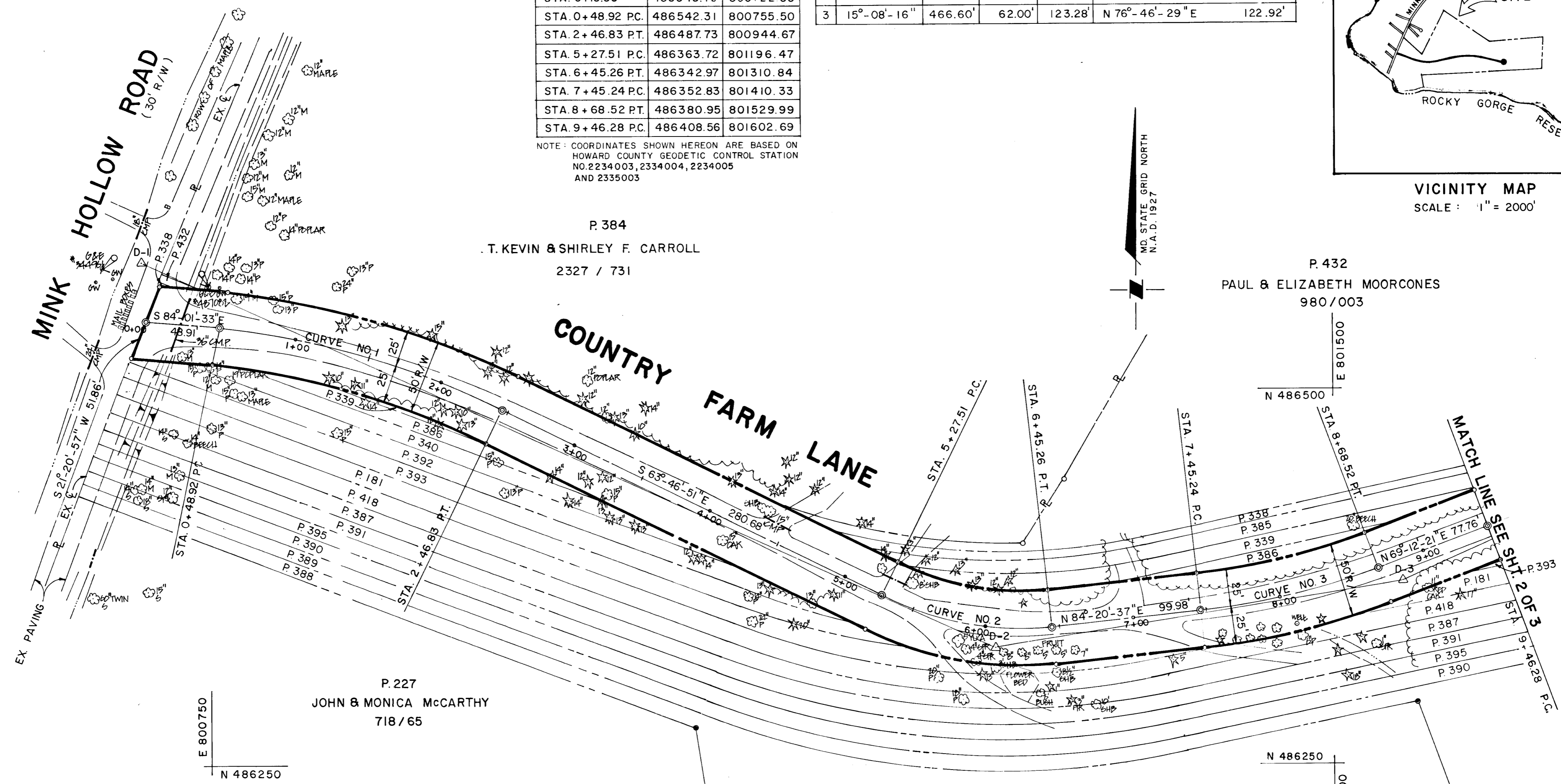
P. 384  
T. KEVIN & SHIRLEY F. CARROLL  
2327 / 731

P. 432  
PAUL & ELIZABETH MOORCONES  
980 / 003

P. 227  
JOHN & MONICA MCCARTHY  
718 / 65

P. 388  
JOHN & MONICA MCCARTHY  
718 / 68

P. 389



**AREA TABULATION**

GROSS AREA OF DRAINAGE & UTILITY EASEMENT	= 4,140.458 SQ. FT. OR 0.129 AC. OF LAND MORE OR LESS
AREA OF WETLANDS WITHIN DRAINAGE & UTILITY EASEMENT	= 1,434 SQ. FT. OR 0.033 AC. OF LAND MORE OR LESS.
GROSS AREA OF FEE SIMPLE ACQUISITION	= 145,644 SQ. FT. OR 3.3435 AC. OF LAND MORE OR LESS.
GROSS AREA OF REVERTABLE SLOPE EASEMENT	= 14,686.4 SQ. FT. OR 0.337 AC. OF LAND MORE OR LESS
AREA OF WETLANDS WITHIN FEE SIMPLE ACQUISITION	= 1,215 SQ. FT. OR 0.028 AC. OF LAND MORE OR LESS
AREA OF WETLANDS WITHIN REVERTABLE SLOPE EASEMENT	= 2,026 SQ. FT. OR 0.047 AC. OF LAND MORE OR LESS

LEGEND	REVISIONS
<ul style="list-style-type: none"> <li>→ PERPETUAL EASEMENT TO DISCHARGE FLOW OF WATER FROM ON/INTO EXISTING WATER WAY OR NATURAL DRAINAGE COURSE.</li> <li>→ DIRECTION OF EXISTING DRAINAGE</li> <li>□ REVERTABLE SLOPE EASEMENT</li> <li>▨ WETLANDS WITHIN REVERTABLE SLOPE EASEMENT</li> <li>▩ WETLANDS WITHIN THIS ACQUISITION</li> </ul>	
COMPUTED BY: A.M.B.	
DRAWN BY: Y.P.	
CHECKED BY: W.H. / J.D.H.	

APPROVED: BUREAU OF ENGINEERING	
_____ CHIEF - BUREAU OF ENGINEERING	_____ DATE
_____ CHIEF - SURVEY & DRAFTING DIV.	_____ DATE
APPROVED: LAND ACQUISITION	
_____ CHIEF - LAND ACQUISITION	_____ DATE

**HOWARD COUNTY, MARYLAND**  
**DEPARTMENT OF PUBLIC WORKS**  
**BUREAU OF ENGINEERING**  
**SURVEY AND DRAFTING DIVISION**

RIGHT OF WAY PROJECT: COUNTRY FARM LANE  
PROJECT NO: J - 4098 - BB  
DATE: 9 - 26 - 91

Copyright © 1990  
SCALE: 1" = 50'  
SHEET 1 OF 3

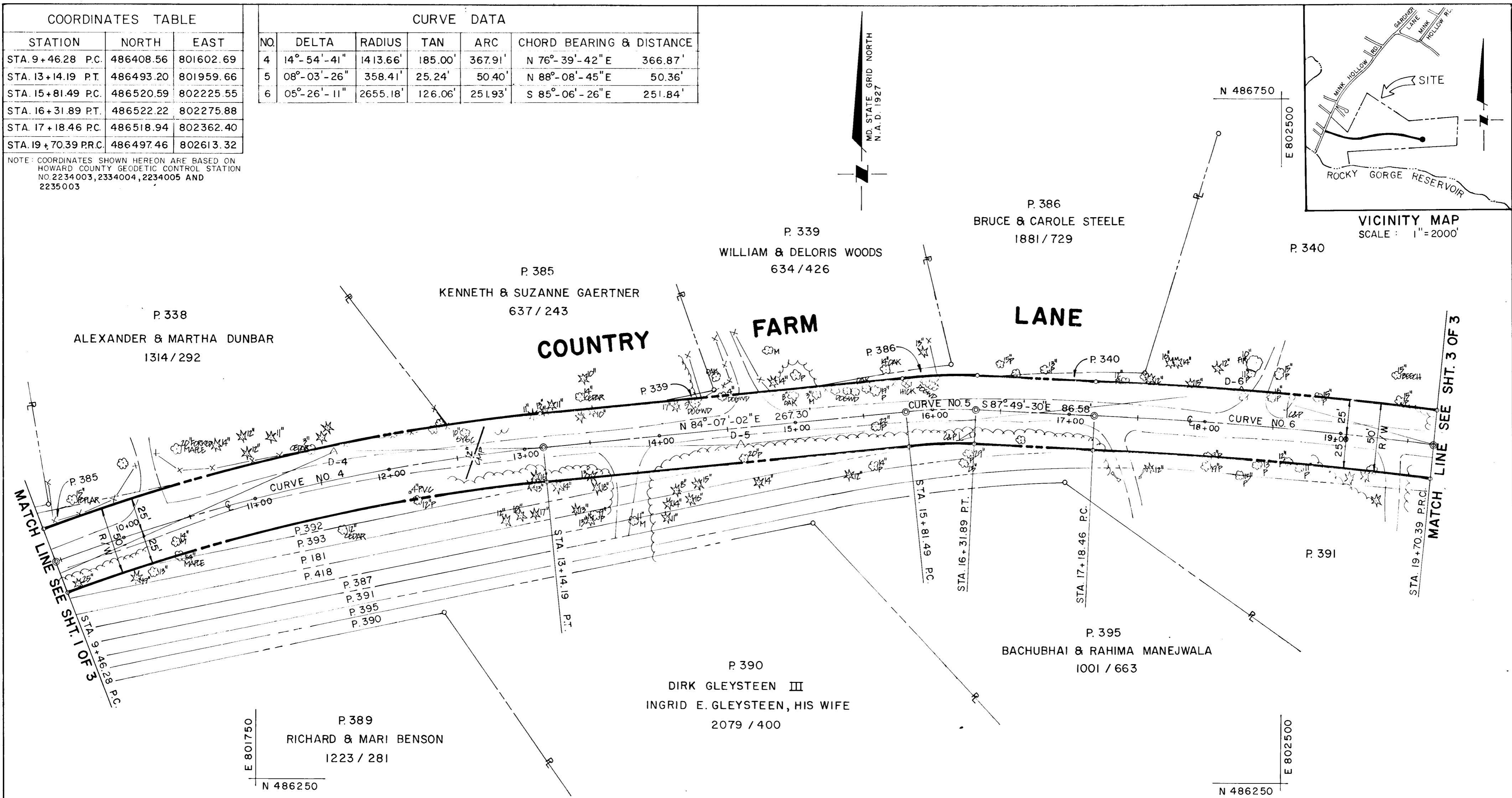
DIRECTOR - DEPARTMENT OF PUBLIC WORKS      PLAT NO: \_\_\_\_\_

SPJ4098BB - 001

COORDINATES TABLE		
STATION	NORTH	EAST
STA. 9+46.28 P.C.	486408.56	801602.69
STA. 13+14.19 P.T.	486493.20	801959.66
STA. 15+81.49 P.C.	486520.59	802225.55
STA. 16+31.89 P.T.	486522.22	802275.88
STA. 17+18.46 P.C.	486518.94	802362.40
STA. 19+70.39 P.R.C.	486497.46	802613.32

CURVE DATA						
NO.	DELTA	RADIUS	TAN	ARC	CHORD BEARING & DISTANCE	
4	14°-54'-41"	1413.66'	185.00'	367.91'	N 76°-39'-42" E 366.87'	
5	08°-03'-26"	358.41'	25.24'	50.40'	N 88°-08'-45" E 50.36'	
6	05°-26'-11"	2655.18'	126.06'	251.93'	S 85°-06'-26" E 251.84'	

NOTE: COORDINATES SHOWN HEREON ARE BASED ON HOWARD COUNTY GEODETIC CONTROL STATION NO 2234003, 2334004, 2234005 AND 2235003



**AREA TABULATION**

GROSS AREA OF DRAINAGE AND UTILITY EASEMENT = 4,140,458 SQ. FT. OR 0.129 AC. OF LAND MORE OR LESS

AREA OF WETLANDS WITHIN DRAINAGE AND UTILITY EASEMENT = 1,434 SQ. FT. OR 0.033 AC. OF LAND MORE OR LESS

GROSS AREA OF FEE SIMPLE ACQUISITION = 145,644 SQ. FT. OR 3.3435 AC. OF LAND MORE OR LESS

GROSS AREA OF REVERTABLE SLOPE EASEMENT = 14,686.4 SQ. FT. OR 0.337 AC. OF LAND MORE OR LESS.

AREA OF WETLANDS WITHIN FEE SIMPLE ACQUISITION = 1,215 SQ. FT. OR 0.028 AC. OF LAND MORE OR LESS.

AREA OF WETLANDS WITHIN REVERTABLE SLOPE EASEMENT = 2,026 SQ. FT. OR 0.047 AC. OF LAND MORE OR LESS.

LEGEND	
	PERPETUAL EASEMENT TO DISCHARGE FLOW OF WATER FROM ON/INTO EXISTING WATER WAY OR NATURAL DRAINAGE COURSE.
	DIRECTION OF EXISTING DRAINAGE
	REVERTABLE SLOPE EASEMENT
	WETLANDS WITHIN REVERTABLE SLOPE EASEMENT
	WETLANDS WITHIN THIS ACQUISITION

REVISIONS	

APPROVED: BUREAU OF ENGINEERING	
CHIEF - BUREAU OF ENGINEERING	DATE
CHIEF - SURVEY & DRAFTING DIV.	DATE
APPROVED: LAND ACQUISITION	
CHIEF - LAND ACQUISITION	DATE

**HOWARD COUNTY, MARYLAND**

**DEPARTMENT OF PUBLIC WORKS**  
**BUREAU OF ENGINEERING**  
**SURVEY AND DRAFTING DIVISION**

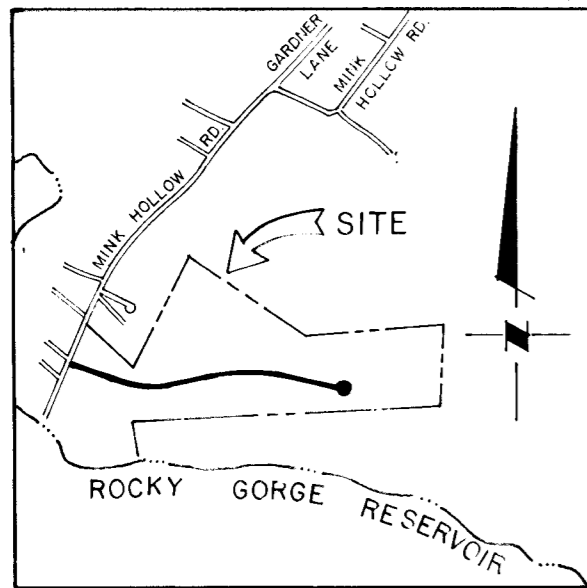
RIGHT OF WAY PROJECT: COUNTRY FARM LANE  
PROJECT NO: J - 4098 - BB  
DATE: 9-26-91

SCALE: 1" = 50'  
SHEET 2 OF 3

Copyright © 1990

DIRECTOR - DEPARTMENT OF PUBLIC WORKS      PLAT NO: \_\_\_\_\_

SPJ4098BB-002

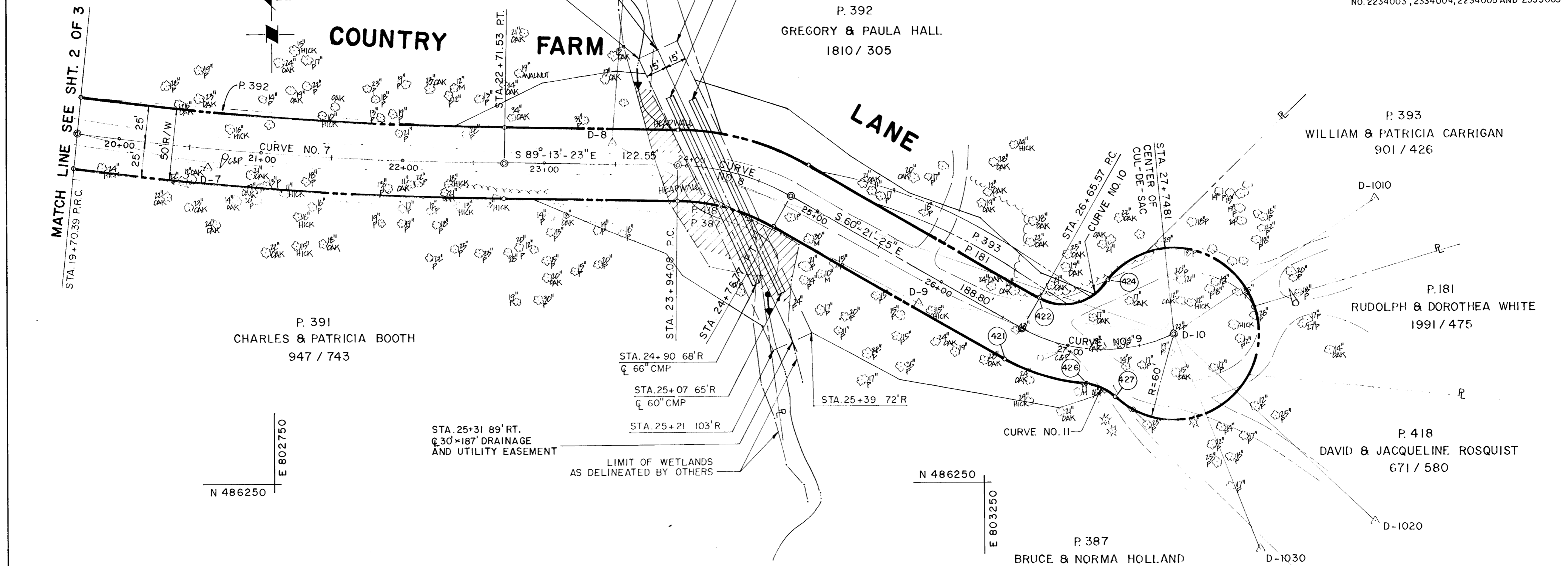


VICINITY MAP  
SCALE: 1" = 2000'

CURVE DATA						
NO.	DELTA	RADIUS	TAN	ARC	CHORD BEARING & DISTANCE	
7	06°-50'-02"	2524.80'	150.75'	301.14'	S 85°-48'-22" E 300.96'	
8	28°-51'-58"	164.12'	42.24'	82.69'	S 74°-47'-22" E 81.81'	
9	53°-40'-12"	116.61'	58.99'	109.23'	S 87°-11'-31" E 105.28'	
10	87°-39'-12"	35.00'	33.59'	53.54'	N 75°-48'-59" E 48.47'	
11	37°-30'-36"	35.00'	11.88'	22.91'	S 65°-32'-01" E 22.51'	

COORDINATES TABLE		
STATION	NORTH	EAST
STA. 19+70.39 PRC.	486497.46	802613.32
STA. 22+71.53 PT.	486475.45	802913.48
STA. 23+94.08 PC.	486473.78	803036.02
STA. 24+76.77 PT.	486306.95	803424.99
STA. 26+65.57 PC.	486358.94	803279.05
STA. 27+74.81	486353.78	803384.21
(421)	486337.21	803266.69
(422)	486380.67	803291.42
(424)	486392.55	803338.41
(426)	486319.38	803322.63
(427)	486310.06	803343.12

NOTE: COORDINATES SHOWN HEREON ARE BASED ON HOWARD COUNTY GEODETIC CONTROL STATION NO. 2234003, 2334004, 2234005 AND 2335003



**AREA TABULATION**

- GROSS AREA OF DRAINAGE AND UTILITY EASEMENT = 4,140,458 SQ. FT. OR 0.129 AC. OF LAND MORE OR LESS
- AREA OF WETLANDS WITHIN DRAINAGE AND UTILITY EASEMENT = 1,434 SQ. FT. OR 0.033 AC. OF LAND MORE OR LESS
- GROSS AREA OF FEE SIMPLE ACQUISITION = 145,644 SQ. FT. OR 3.3435 AC. OF LAND MORE OR LESS.
- GROSS AREA OF REVERTABLE SLOPE EASEMENT = 14,686.4 SQ. FT. OR 0.337 AC. OF LAND MORE OR LESS.
- AREA OF WETLANDS WITHIN FEE SIMPLE ACQUISITION = 1,215 SQ. FT. OR 0.028 AC. OF LAND MORE OR LESS.
- AREA OF WETLANDS WITHIN REVERTABLE SLOPE EASEMENT = 2,026 SQ. FT. OR 0.047 AC. OF LAND MORE OR LESS.

LEGEND	
	PERPETUAL EASEMENT TO DISCHARGE FLOW OF WATER FROM ON/ INTO EXISTING WATER WAY OR NATURAL DRAINAGE COURSE.
	DIRECTION OF EXISTING DRAINAGE.
	REVERTABLE SLOPE EASEMENT
	WETLANDS WITHIN REVERTABLE SLOPE EASEMENT.
	WETLANDS WITHIN THIS ACQUISITION
COMPUTED BY: A.M.B.	
DRAWN BY: Y.P.	
CHECKED BY: W.H. / J.D.H.	

REVISIONS	

APPROVED: BUREAU OF ENGINEERING	
CHIEF - BUREAU OF ENGINEERING	DATE
CHIEF - SURVEY & DRAFTING DIV.	DATE
APPROVED: LAND ACQUISITION	
CHIEF - LAND ACQUISITION	DATE

HOWARD COUNTY, MARYLAND  
DEPARTMENT OF PUBLIC WORKS  
BUREAU OF ENGINEERING  
SURVEY AND DRAFTING DIVISION

RIGHT OF WAY PROJECT: COUNTRY FARM LANE  
PROJECT NO: J-4098-BB  
DATE: 9-26-91

DIRECTOR - DEPARTMENT OF PUBLIC WORKS

SCALE: 1" = 50'  
SHEET 3 OF 3  
Copyright © 1990

PLAT NO: \_\_\_\_\_

SPJ4098BB-200