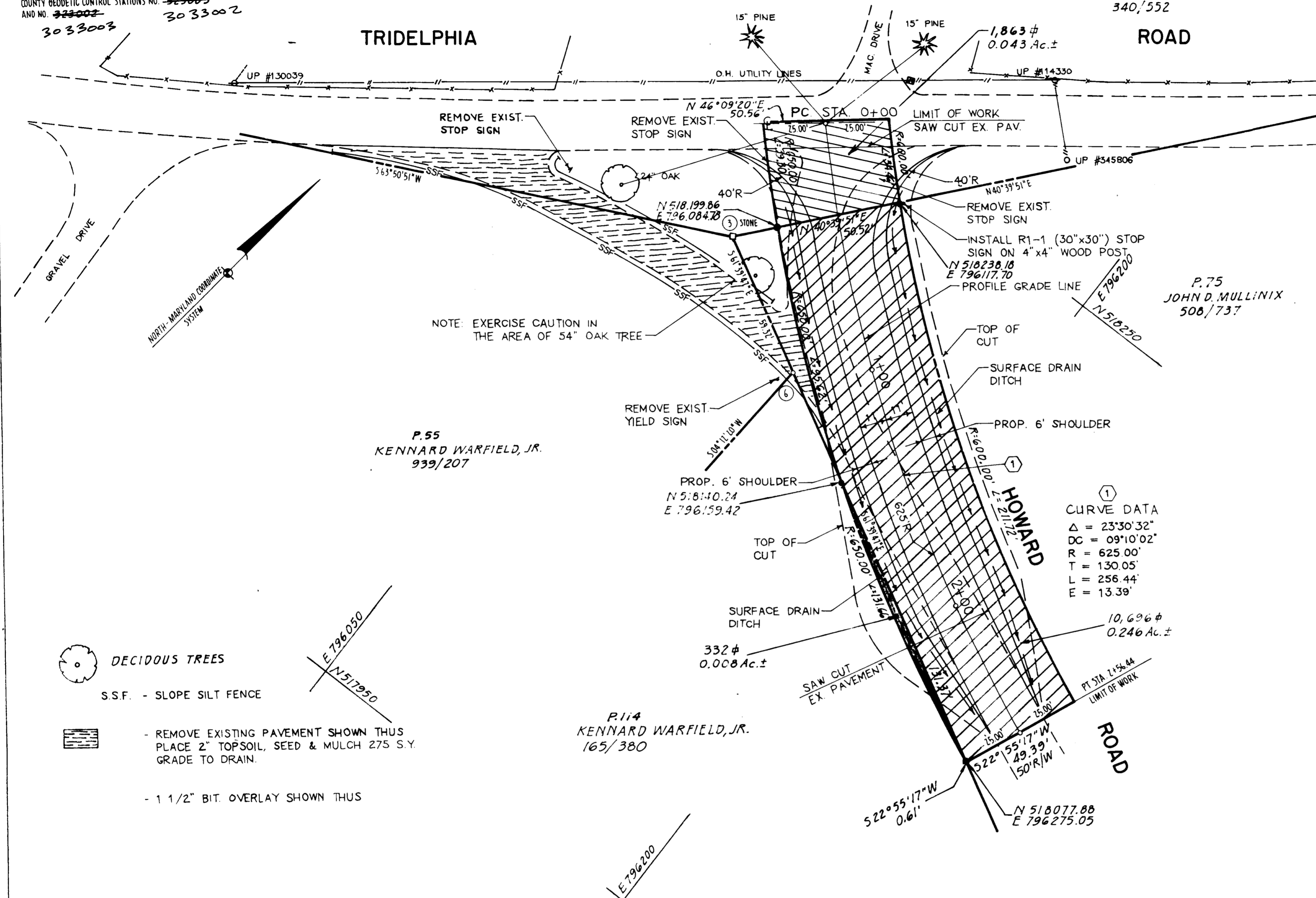
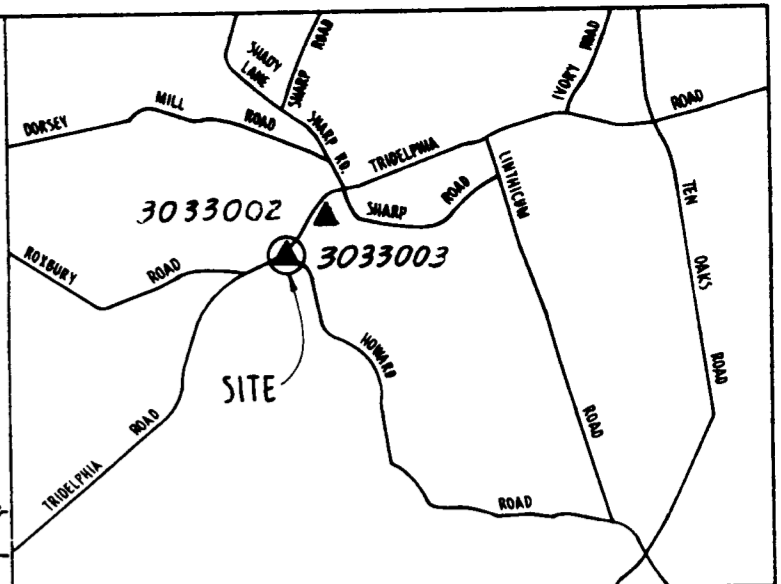


**COORDINATES**

NO	NORTH	EAST
3	518186.620	796073.413
6	518158.463	796125.625

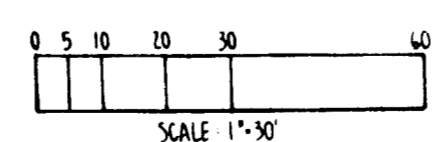
NOTE: COORDINATES BASED ON NAD 27, MARYLAND COORDINATE SYSTEM AS PROJECTED BY HOWARD COUNTY GEODETIC CONTROL STATIONS NO. ~~323003~~ AND NO. ~~323002~~ 3033003 3033002



DECIDUOUS TREES  
S.S.F. - SLOPE SILT FENCE

REMOVE EXISTING PAVEMENT SHOWN THUS  
PLACE 2" TOPSOIL, SEED & MULCH 275 S.Y.  
GRADE TO DRAIN.  
- 1 1/2" BIT. OVERLAY SHOWN THUS

NOTE: THIS PLAT IS BASED ON A FIELD RUN MONUMENTED BOUNDARY SURVEY PERFORMED ON OR ABOUT BY HOWARD COUNTY BUREAU OF ENGINEERING.



APPROVED: DEPARTMENT OF PUBLIC WORKS  
CHIEF: BUREAU OF ENGINEERING  
CHIEF: SURVEY AND DRAFTING DIVISION  
CHIEF: REAL ESTATE SERVICES DIVISION

REVISIONS

JEFFERSON D. HIRSH  
PROPERTY ENGINEER  
MARYLAND REG. No. 362

**HOWARD COUNTY DEPARTMENT OF PUBLIC WORKS**  
FEE SIMPLE ACQUISITION  
HOWARD COUNTY, MARYLAND  
PROJECT NAME: TRIDELPHIA RD. AT HOWARD RD SCALE: 1"=30'  
INTERSECTION IMPROVEMENT SHEET No.: 1  
DATE: \_\_\_\_\_ PROJECT No.: T-7063-GG JOB No.: 92007  
PLAT No.: \_\_\_\_\_