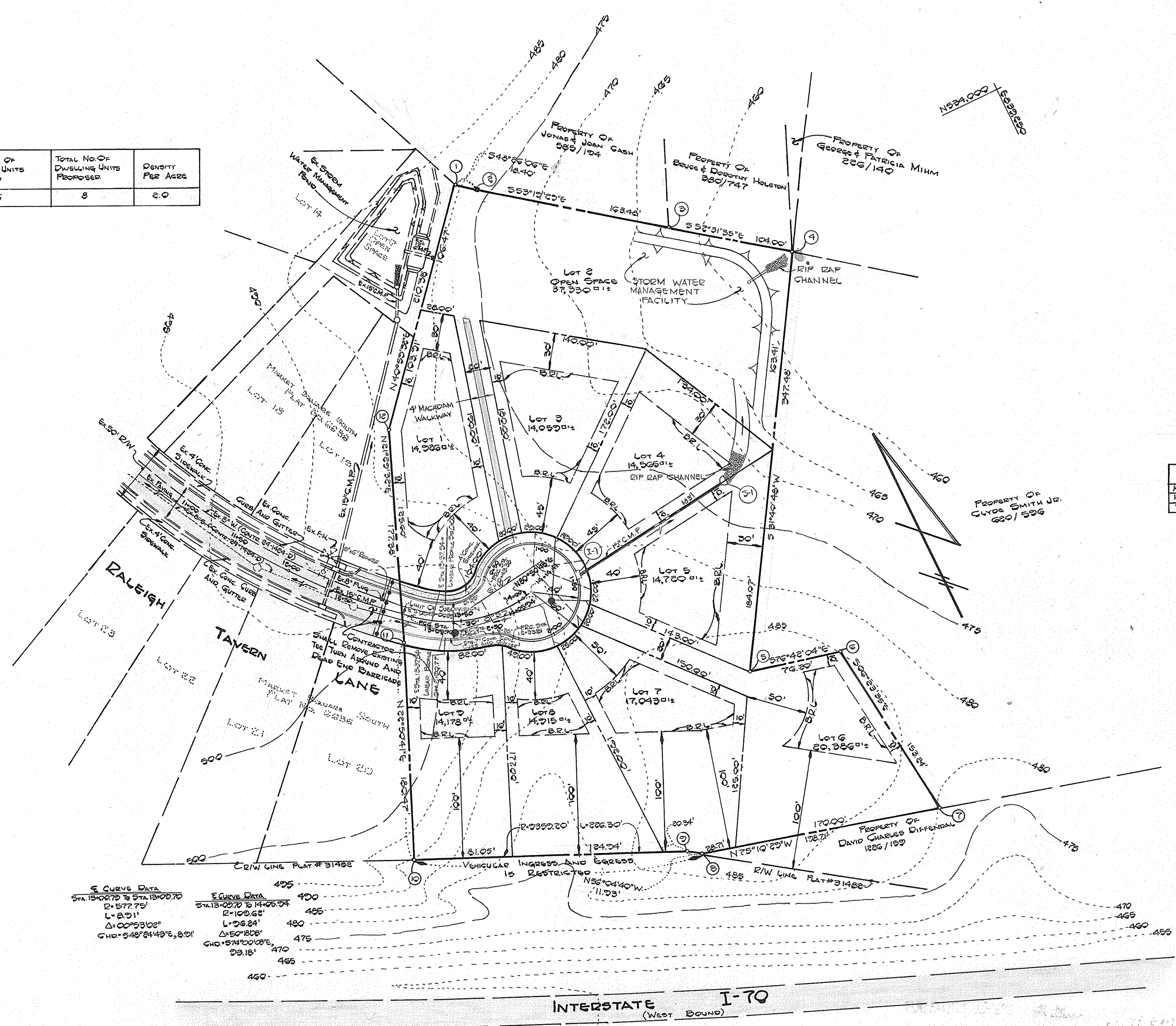
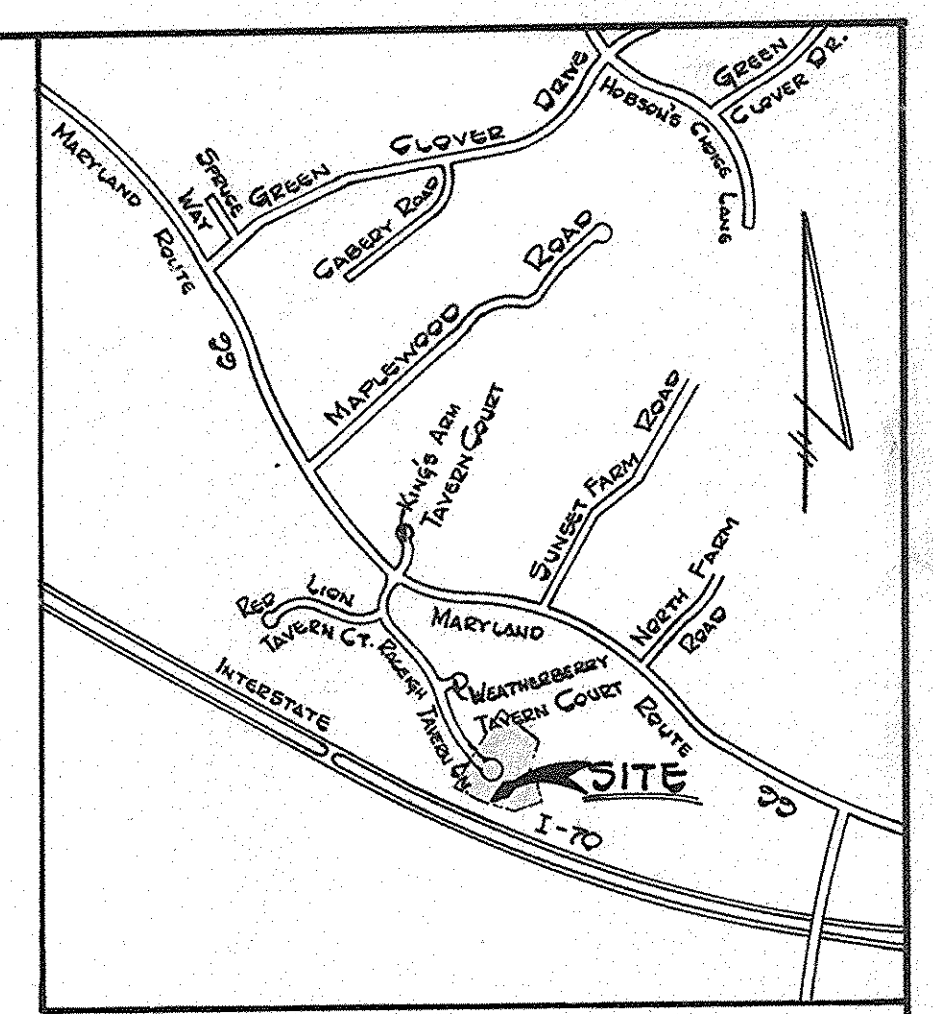


COORDINATE TABLE		
No.	NORTH	EAST
1	534122.36	838912.40
2	534110.10	838866.16
3	534018.51	838567.28
4	533949.89	838232.89
5	533853.59	838057.94
6	533733.00	837911.90
7	533583.71	837748.56
8	533404.50	837564.47
9	533241.21	837460.07
10	533033.30	837330.36
11	532787.04	837160.70
12	532503.56	836974.40

DENSITY TABULATION						
OPEN SPACE REQUIRED	OPEN SPACE PROVIDED	GROSS AREA	FLOOD PLAIN STEEP SLOPED	NET AREA	NO. OF DWELLING UNITS ALLOWED	DENSITY PER ACRE
0.760 Ac.±	0.857 Ac.±	3076 Ac.±	-----	3076 Ac.±	8.6	8.0

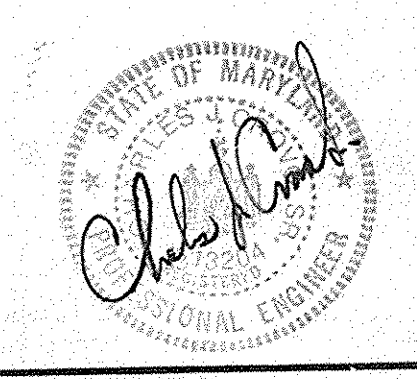


- GENERAL NOTES**
1. THE SUBJECT PROPERTY IS ZONED R-20 AS PER COMPREHENSIVE ZONING PLAN DATED AUGUST 2, 1985.
  2. PUBLIC WATER AND PUBLIC SEWER WILL BE USED WITHIN THIS DEVELOPMENT.
  3. PROPERTY IS LOCATED ON TAX MAP 17, PARCEL 616.
  4. TOTAL NUMBER OF BUILDABLE LOTS = 8.
  5. TOTAL AREA OF BUILDABLE LOTS 2,865 AC.±.
  6. TOTAL AREA OF OPEN SPACE 0.857 AC.±.
  7. TOTAL AREA OF ROAD R/W 0.254 AC.±.
  8. TOTAL AREA OF SUBDIVISION 3.976 AC.±.
  9. STORM WATER MANAGEMENT WILL BE PROVIDED BY THE DETENTION METHOD.
  10. THIS PLAN IS SUBJECT TO V.P. 87-110.

LOT SIZE AND MANDATORY OPEN SPACE REQUIREMENTS				
LOT SIZE	NO. OF LOTS	AREA OF LOTS	OPEN SPACE REQUIREMENT	OPEN SPACE REQUIRED
15,000-15,999	6	8,006 AC.±	30%	2,402 AC.±
16,000-17,999	2	2,702 AC.±	30%	811 AC.±
TOTALS	8	2,708 AC.±	---	0,760 AC.±

S CURVE DATA		E CURVE DATA	
STA 13+00.70 TO STA 13+00.70	R=1300.00'	STA 13+00.70 TO STA 14+06.04	R=1026.66'
D=577.75'	L=20.11'	D=1026.66'	L=20.84'
Δ=00°53'00"	CHD=548'24.43'E, 0.01'	Δ=50°18'00"	CHD=574'00.00'E, 22.18'

**FISHER, COLLINS AND CARTER, INC.**  
 CIVIL ENGINEERS AND LAND SURVEYORS  
 8288 COURT AVENUE  
 ELLICOTT CITY, MARYLAND 21043  
 TELEPHONE: (301) 461-2855



**OWNER AND DEVELOPER**  
 SMITH, ROBERTS, AND ASSOCIATES  
 96 HOWARD COUNTY LAND SERVICES, INC.  
 10176 BALTIMORE NATIONAL PIKE  
 SUITE 210  
 ELLICOTT CITY, MARYLAND 21043

TENTATIVELY APPROVED ON May 6, 1987  
 DATE PER V.P. 87-110  
 OFFICE OF PLANNING AND ZONING OF  
 HOWARD COUNTY  
 ACTING Louis F. Dimes  
 Chief, Division of Land Development & Zoning Administration

**SKETCH PLAN**  
**MARKET SQUARE EAST**  
 LOTS 1-9  
 SECOND ELECTION DISTRICT HOWARD COUNTY, MARYLAND  
 TAX MAP 17 PARCEL 616  
 SCALE: 1"=50' SHEET 1041 JANUARY 26, 1987  
 587-63