

VICINITY MAP  
Scale: 1"=8000'

**DENSITY TABLE**

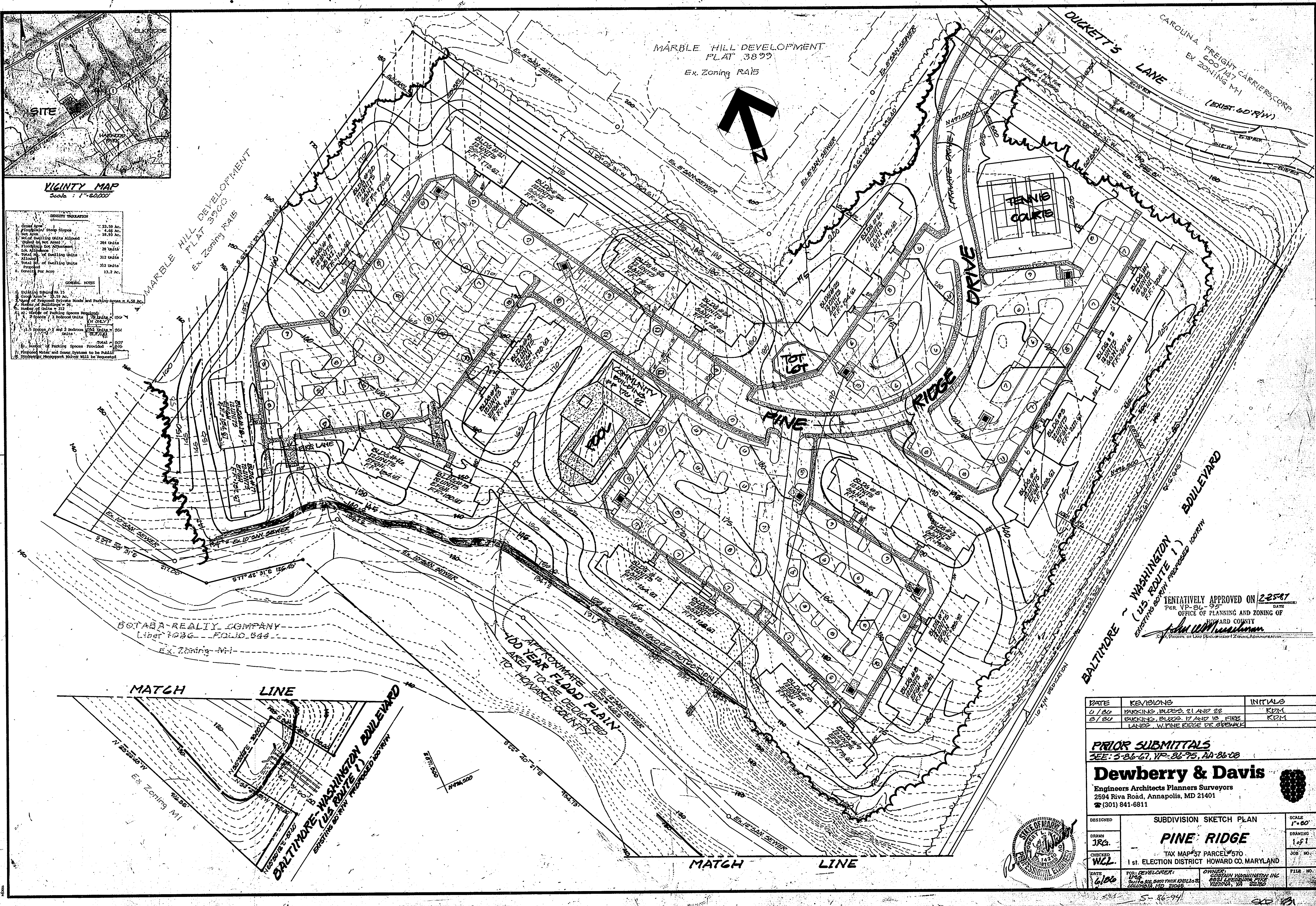
1. Gross Area = 23.59 Ac.
2. Floodplain/Steep Slopes = 4.66 Ac.
3. Net Area = 18.93 Ac.
4. No. of Dwelling Units Allowed (based on Net Area) = 284 Units
5. Floodplain Elevation Adjustment = 28 Units
6. Total No. of Dwelling Units Allowed = 312 Units
7. Total No. of Dwelling Units Proposed = 312 Units
8. Density per Acre = 13.7 Ac.

**GENERAL NOTES**

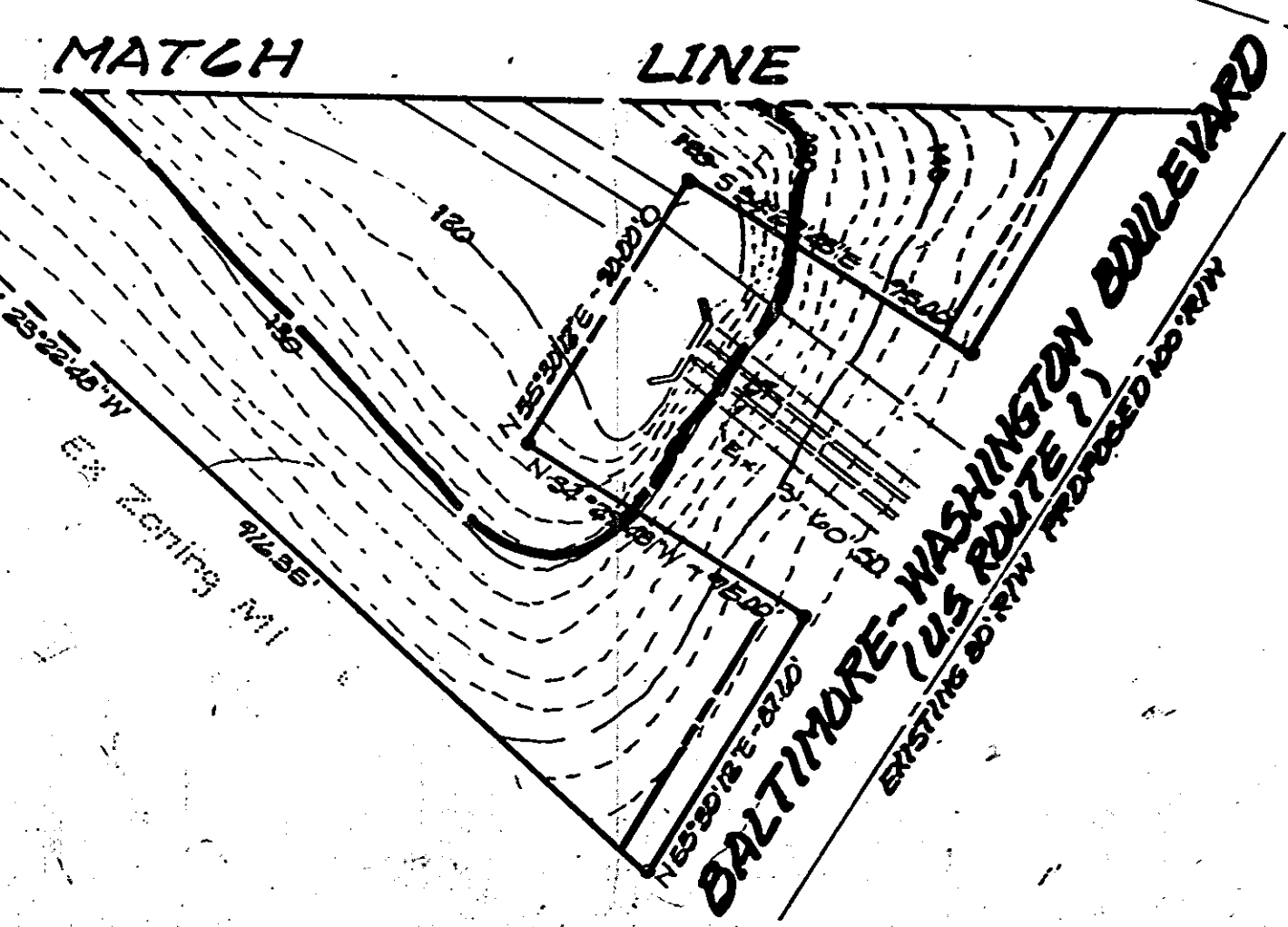
1. Existing Survey on 15
2. Gross Area = 23.59 Ac.
3. Map of Proposed Streets, Roads and Parking Areas = 4.58 Ac.
4. Number of Buildings = 26
5. Number of Units = 312
6. 1st 1/2 of Parking Spaces Proposed = 20 Units
7. 2nd 1/2 of Parking Spaces Proposed = 20 Units
8. Total = 40 Units
9. Number of Parking Spaces Provided = 40
10. Flooded Water and Sewer Systems to be Public
11. Surveyor's Measurements shall be Requested

MARBLE HILL DEVELOPMENT  
PLAT 3822

Ex. Zoning RA15



OSTABA REALTY COMPANY  
Liber 1986 FOLIO 544  
Ex. Zoning - M1



APPROXIMATE  
100 YEAR FLOOD PLAIN  
AREA TO BE DEDICATED  
TO HOWARD COUNTY

TENTATIVELY APPROVED ON 2-25-87  
PER VP-86  
OFFICE OF PLANNING AND ZONING OF  
HOWARD COUNTY  
*John W. Musickman*  
SEAL, Division of Land Development & Zoning Administration

DATE	REVISIONS	INITIALS
01/80	PARKING, BLDG. 21 AND 22	KDM
07/80	PARKING, BLDG. 17 AND 18 FIRE LINES W/ PINE RIDGE DR. SIDEWALK	KDM

**PRIOR SUBMITTALS**  
SEE: 5-86-67, VP-86-95, AD-86-08

**Dewberry & Davis**  
Engineers Architects Planners Surveyors  
2594 Riva Road, Annapolis, MD 21401  
(301) 841-6811

DESIGNED	SUBDIVISION SKETCH PLAN		SCALE
DRAWN	<b>PINE RIDGE</b>		1"=60'
CHECKED	TAX MAP # 37 PARCELS # 570		DRAWING
DATE	FOR DEVELOPER:	OWNER:	1 of 1
6/86	VP-86-94	GOSMAN WASHINGTON INC. 8521 LEBANON PIKE VIENNA, VA 22180	JOB NO.
			FILE NO.



5-86-94