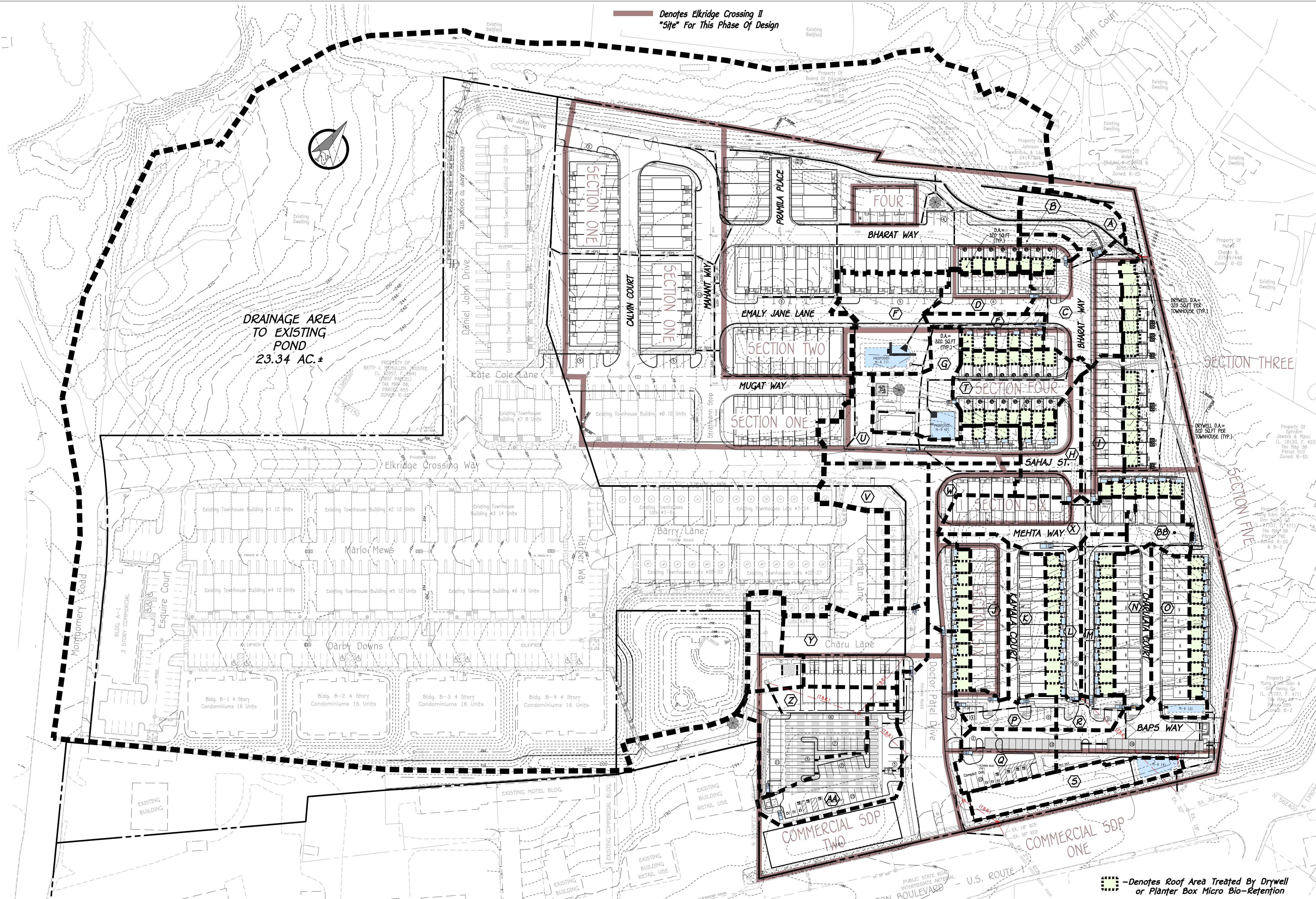


DRAINAGE AREA DATA

AREA=8,440 SQ.FT. FT-2	A	IMP AREA=2,993 SQ.FT.
AREA=2,446 SQ.FT. FT-1	B	IMP AREA=2,051 SQ.FT.
AREA=16,274 SQ.FT. MB-2	C	IMP AREA=12,633 SQ.FT.
AREA=6,901 SQ.FT. FT-3	D	IMP AREA=5,570 SQ.FT.
AREA=7,294 SQ.FT. FT-4	E	IMP AREA=7,023 SQ.FT.
AREA=16,849 SQ.FT. MB-1 (SEC. 2)	F	IMP AREA=9,826 SQ.FT.
AREA=12,400 SQ.FT. (SEC. 3)	G	IMP AREA=2,937 SQ.FT.
AREA=10,004 SQ.FT. FT-B1	H	IMP AREA=6,644 SQ.FT.
AREA=9,673 SQ.FT. FT-B2	I	IMP AREA=8,187 SQ.FT.
AREA=11,811 SQ.FT. FT-6	J	IMP AREA=9,680 SQ.FT.
AREA=10,172 SQ.FT. FT-7	K	IMP AREA=8,508 SQ.FT.
AREA=5,233 SQ.FT. FT-8	L	IMP AREA=3,817 SQ.FT.
AREA=6,421 SQ.FT. FT-9	M	IMP AREA=4,887 SQ.FT.
AREA=9,934 SQ.FT. FT-11	N	IMP AREA=8,261 SQ.FT.
AREA=12,028 SQ.FT. MB-3 (SEC. 5)	O	IMP AREA=8,785 SQ.FT.
AREA=6,040 SQ.FT. FT-5B	P	IMP AREA=4,324 SQ.FT.
AREA=7,843 SQ.FT. FT-5A	Q	IMP AREA=4,105 SQ.FT.
AREA=4,107 SQ.FT. FT-10	R	IMP AREA=2,922 SQ.FT.
AREA=10,634 SQ.FT. MB-4 (SEC. 7)	S	IMP AREA=8,767 SQ.FT.
AREA=10,531 SQ.FT. FT-12	T	IMP AREA=8,173 SQ.FT.
AREA=14,811 SQ.FT. FT-14	U	IMP AREA=9,232 SQ.FT.
AREA=17,094 SQ.FT. FT-18	V	IMP AREA=11,245 SQ.FT.
AREA=12,281 SQ.FT. FT-19	W	IMP AREA=11,052 SQ.FT.
AREA=12,250 SQ.FT. FT-13	X	IMP AREA=11,637 SQ.FT.
AREA=17,023 SQ.FT. FT-15	Y	IMP AREA=15,327 SQ.FT.
AREA=15,659 SQ.FT. FT-16	Z	IMP AREA=13,809 SQ.FT.
AREA=15,682 SQ.FT. FT-17	AA	IMP AREA=14,037 SQ.FT.
AREA=9,822 SQ.FT. FT-20	BB	IMP AREA=4,882 SQ.FT.

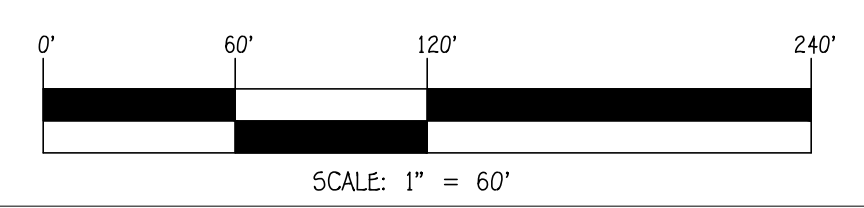
Denotes Elkridge Crossing II "Site" For This Phase Of Design



DRAINAGE AREA TO EXISTING POND
23.34 AC.±



Paul G. Cavanaugh
 Paul G. Cavanaugh, P.E.
 Date: 5/15/24
 "Professional Certification: I hereby certify that these documents were prepared or approved by me, and that I am a duly Licensed Professional Engineer under the laws of the State of Maryland, License No. 27020, Expiration Date 1-25-26."



TENTATIVELY APPROVED
 DEPARTMENT OF PLANNING AND ZONING
 HOWARD COUNTY

DocuSigned by:
 Lynda Eisenberg
 2028358939426
 PLANNING DIRECTOR

6/12/2024
 DATE

OWNER
 CHETAN B. MEHTA, BENEFICIARY OF THE CHETAN MEHTA IRREVOCABLE TRUST
 5192 TALBOTS LANDING
 ELLICOTT CITY, MARYLAND 21046
 443-285-9563

DEVELOPER
 ELKRIDGE DEVELOPERS, LLC
 5192 TALBOTS LANDING
 ELLICOTT CITY, MD 21046
 443-285-9563

DRAINAGE AREA MAP
 ELKRIDGE CROSSING II
 LOTS 1 THRU 187, OPEN SPACE LOTS 188 THRU 197
 AND PARCELS 'A' THRU 'C'

TAX MAP NO.: 38 GRID NOS.: 2 & 3 PARCEL NO.: 38
 ZONED CAC-CU
 PREVIOUS HOWARD COUNTY FILES: SEE NOTE 2E
 FIRST ELECTION DISTRICT HOWARD COUNTY, MARYLAND
 SCALE: AS SHOWN DATE: MAY 15, 2024
 SHEET 9 OF 9