



Note: For GWM Location see Grading Plan.

TENTATIVELY APPROVED
 DEPT. OF PLANNING AND ZONING OF
 HOWARD COUNTY
Paul R. Smith 10/19/00
 PLANNING DIRECTOR DATE

For Legend see sheet 1

GLW GUTSCHICK LITTLE & WEBER, P.A.
 CIVIL ENGINEERS, LAND SURVEYORS, LAND PLANNERS, LANDSCAPE ARCHITECTS
 3909 NATIONAL DRIVE - SUITE 250 - BURTONSVILLE OFFICE PARK
 BURTONSVILLE, MARYLAND 20866
 TEL: 301-421-4024 BALT: 410-880-1820 DC/VA: 301-989-2524 FAX: 301-421-4186

DATE	REVISION	BY	APP'R.

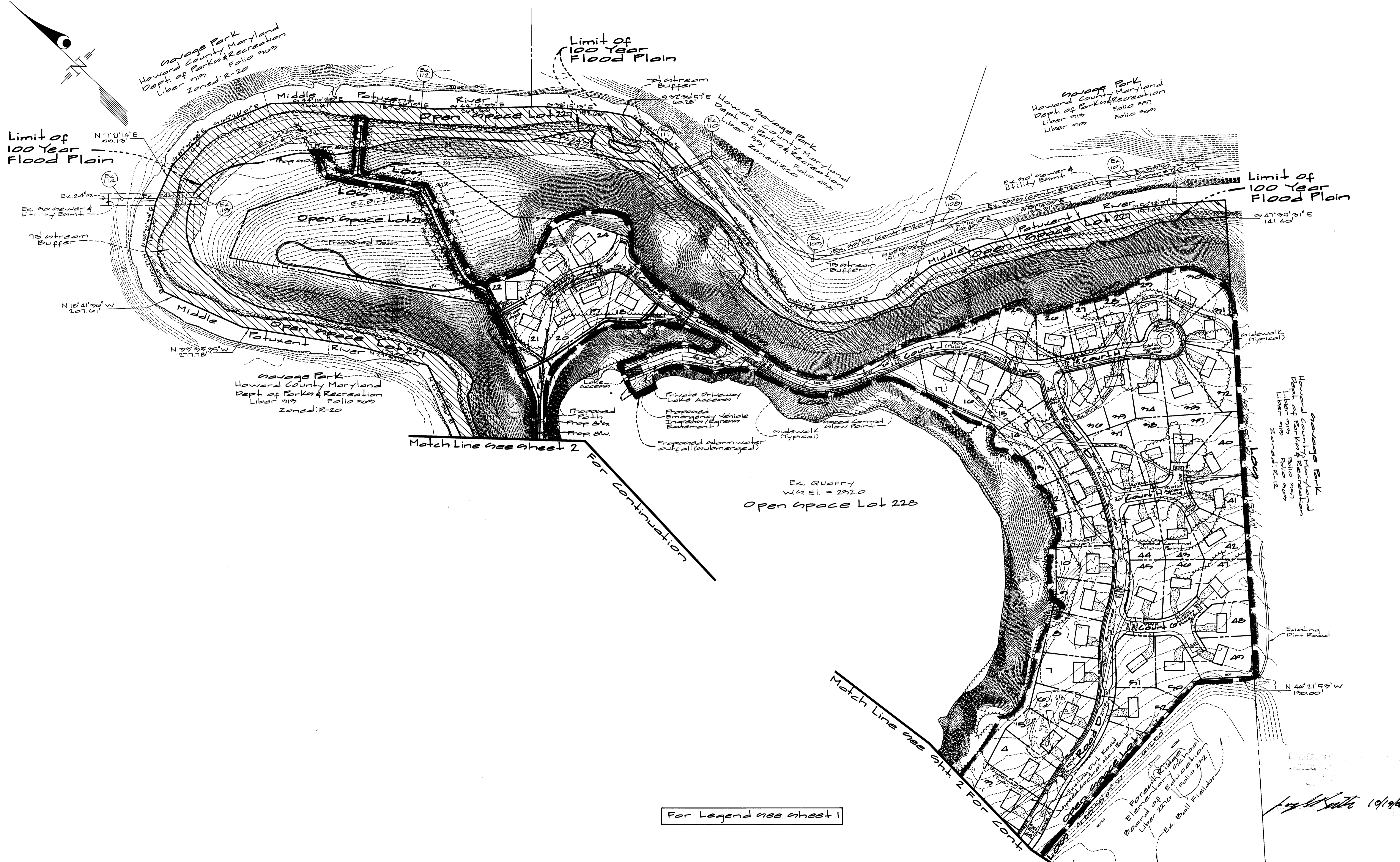
Owner:
 The Howard Research & Development Corporation
 10275 Little Patuxent Pkwy.
 Columbia, Maryland 21044
 Attn: Al Edwards
 Phone: (410) 992-0027

SKETCH PLAN
STONE LAKE
 Liber 572 Folio 470

ELECTION DISTRICT No. 6

SCALE	ZONING	G. L. W. FILE No.
1"=100'	RED	99140
DATE	TAX MAP - GRID	SHEET
OCT., 2000	47 - 9/10	2 OF 3

50013



Limit of 100 Year Flood Plain

Limit of 100 Year Flood Plain

Limit of 100 Year Flood Plain

Match Line see sheet 2

For Continuation

Ex. Quarry
W/EI. = 232.0
Open Space Lot 228

For Legend see sheet 1

GLW GUTSCHICK LITTLE & WEBER, P.A.
CIVIL ENGINEERS, LAND SURVEYORS, LAND PLANNERS, LANDSCAPE ARCHITECTS
3909 NATIONAL DRIVE - SUITE 250 - BURTONSVILLE OFFICE PARK
BURTONSVILLE, MARYLAND 20866
TEL: 301-421-4024 BALT: 410-880-1820 DC/VA: 301-989-2524 FAX: 301-421-4186

DATE	REVISION	BY	APPR.

Owner
The Howard Research
Development Corporation
10275 Little Patuxent Pkwy.
Columbia, Maryland 21044
Attn: Al Edwards
Phone: (410) 992-0027

SKETCH PLAN
STONE LAKE
Liber 512 Folio 430

ELECTION DISTRICT No. 6

HOWARD COUNTY, MARYLAND

SCALE	ZONING	G. L. W. FILE No.
1"=100'	RED	99140
DATE	TAX MAP - GRID	SHEET
OCT, 2000	47 - 9/10	3 OF 5

S 0013



The stormwater Management Facility shown on this plan is an approximation of its ultimate size and shape. It is understood that this facility has not been designed and its size and shape may change altering the number of units allocated for this development.

Stormwater Management

- Facility #1
- Pocket Wetland Water Quality
 - 24hr Year Water Quality Control
 - Hazard Classification 'A'

- Warren A. Goulder
Denny J. Foss
Liber 508 Folio 409.00
Zoned: R2C
- Michael E. Tishman
Dennis M. Platt
Plot No. 10070
Zoned: R2C
- Shanika Court
Plot No. 10070
Zoned: R2C
- Lambert V. Fleming
Denise C. Platt
Plot No. 10070
Zoned: R2C
- Forest Ridge
Elementary School
Board of Education
Liber 221 Folio 202

GLW GUTSCHICK LITTLE & WEBER, P.A.
 CIVIL ENGINEERS, LAND SURVEYORS, LAND PLANNERS, LANDSCAPE ARCHITECTS
 3909 NATIONAL DRIVE - SUITE 250 - BURTONSVILLE OFFICE PARK
 BURTONSVILLE, MARYLAND 20866
 TEL: 301-421-4024 BALTIMORE: 410-880-1820 SC/VIR: 301-989-2524 FAX: 301-421-4186

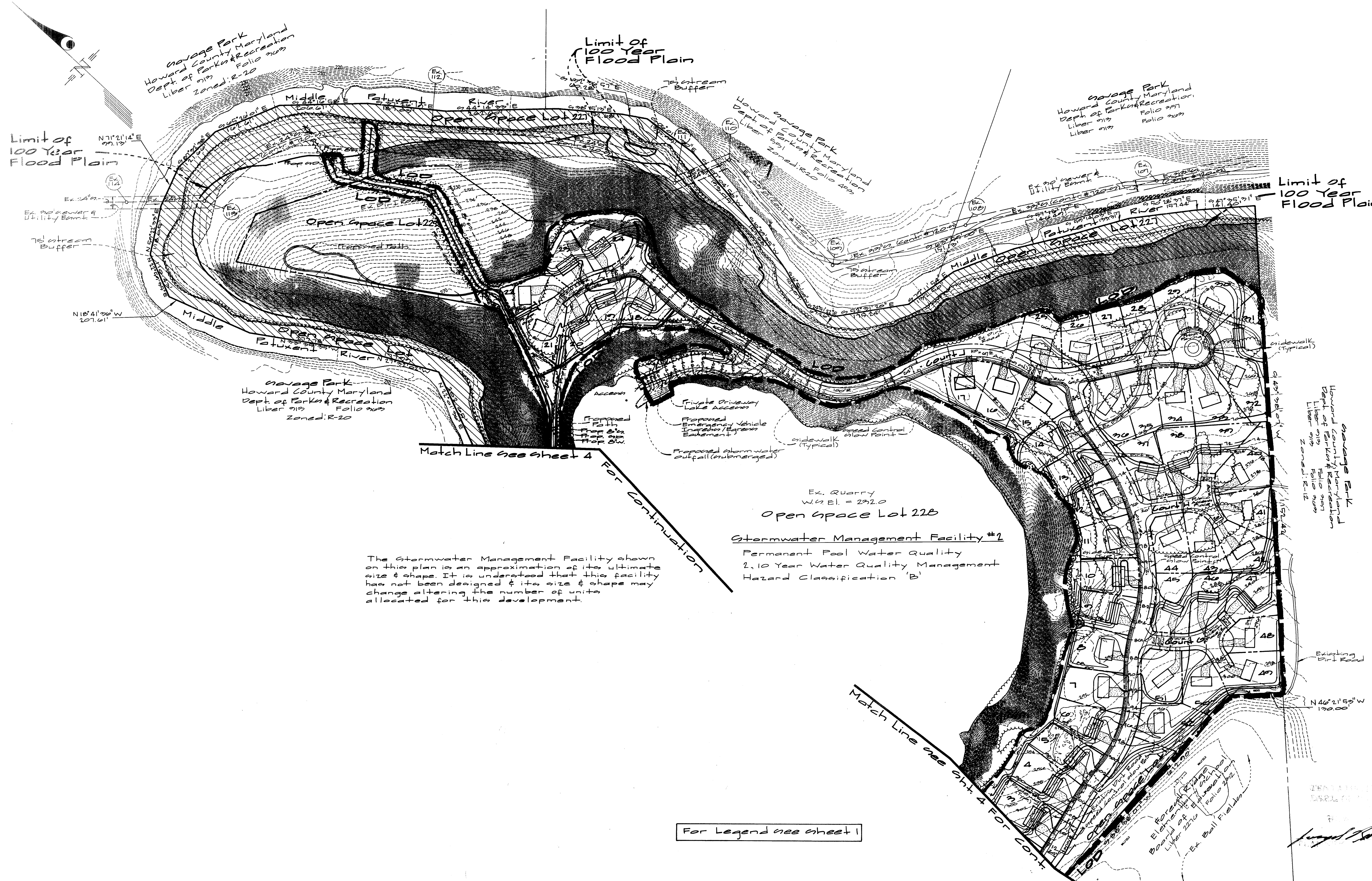
DATE	REVISION	BY	APPR.

Owner:
 The Howard Research
 & Development Corporation
 10275 Little Patuxent Pkwy.
 Columbia, Maryland 21044
 Attn.: Al Edwards
 Phone: (410) 992-0027

Conceptual Grading Plan
STONE LAKE
 Liber 572 Folio 430
 ELECTION DISTRICT No. 6
 HOWARD COUNTY, MARYLAND

SCALE	ZONING	G. L. W. FILE No.
1"=100'	RED	99140
DATE	TAX MAP - GRID	SHEET
OCT., 2000	47 - 9/10	4 OF 5

S0013



The Stormwater Management Facility shown on this plan is an approximation of its ultimate size & shape. It is understood that this facility has not been designed & its size & shape may change altering the number of units allocated for this development.

Ex. Quarry
W 9 El. = 292.0
Open Space Lot 22B
Stormwater Management Facility #1
Permanent Pool Water Quality
2, 10 Year Water Quality Management
Hazard Classification 'B'

For Legend see sheet 1

GLW GUTSCHICK LITTLE & WEBER, P.A.
CIVIL ENGINEERS, LAND SURVEYORS, LAND PLANNERS, LANDSCAPE ARCHITECTS
3909 NATIONAL DRIVE - SUITE 250 - BURTONSVILLE OFFICE PARK
BURTONSVILLE, MARYLAND 20866
TEL: 301-421-4024 BALT: 410-880-1820 DC/VA: 301-989-2524 FAX: 301-421-4186

DATE	REVISION	BY	APP'R.

Owner
The Howard Research & Development Corporation
10275 Little Patuxent Pkwy.
Columbia, Maryland 21044
Attn: Al Edwards
Phone: (410) 992-0027

Conceptual Grading Plan
STONE LAKE
Liber 512 Folio 470
ELECTION DISTRICT No. 6
HOWARD COUNTY, MARYLAND

SCALE	ZONING	G. L. W. FILE No.
1"=100'	RED	99140
DATE	TAX MAP - GRID	SHEET
OCT., 2000	47 - 9/10	5 OF 5

S0013