

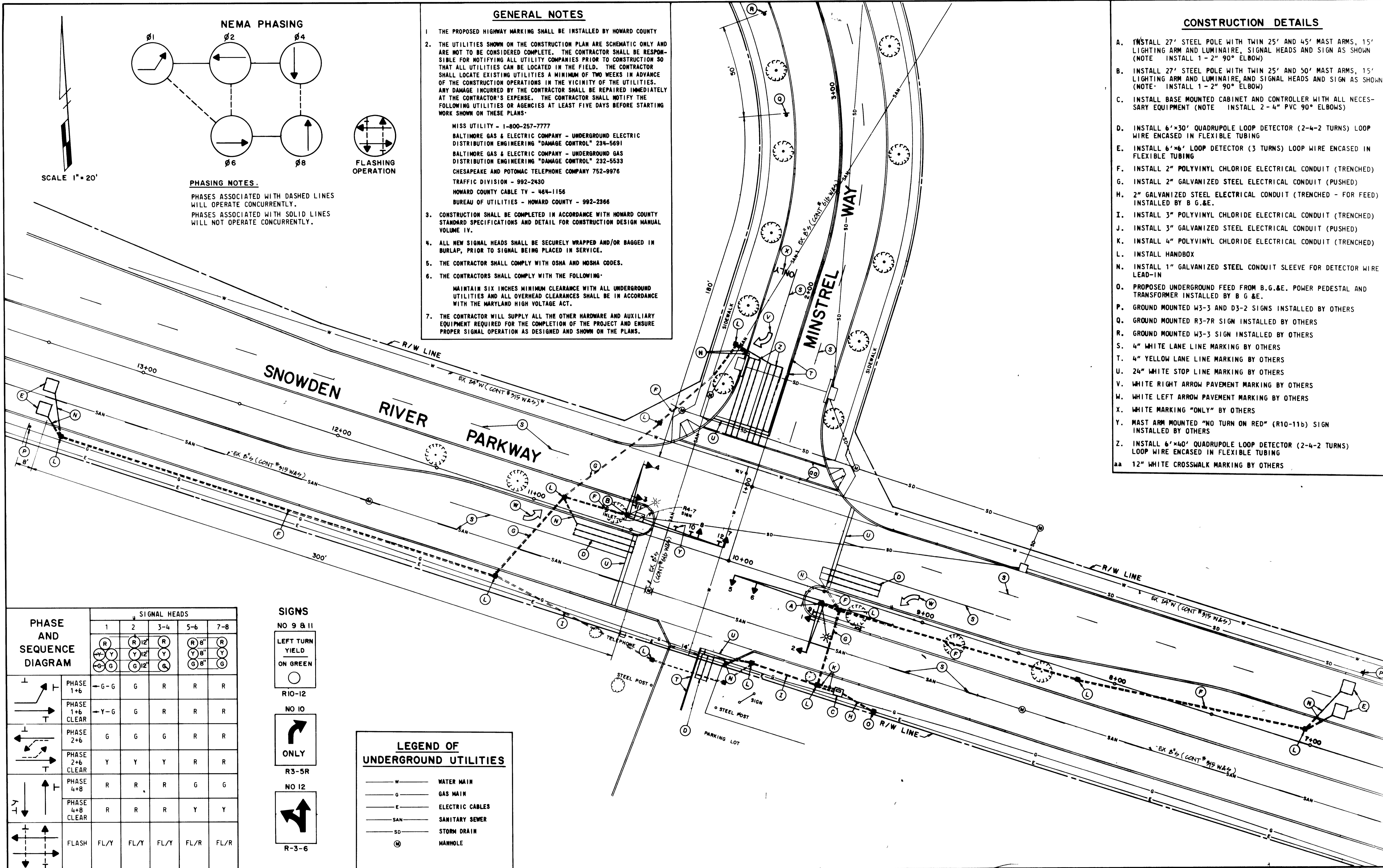
PHASING NOTES.
 PHASES ASSOCIATED WITH DASHED LINES WILL OPERATE CONCURRENTLY.
 PHASES ASSOCIATED WITH SOLID LINES WILL NOT OPERATE CONCURRENTLY.

GENERAL NOTES

- THE PROPOSED HIGHWAY MARKING SHALL BE INSTALLED BY HOWARD COUNTY
- THE UTILITIES SHOWN ON THE CONSTRUCTION PLAN ARE SCHEMATIC ONLY AND ARE NOT TO BE CONSIDERED COMPLETE. THE CONTRACTOR SHALL BE RESPONSIBLE FOR NOTIFYING ALL UTILITY COMPANIES PRIOR TO CONSTRUCTION SO THAT ALL UTILITIES CAN BE LOCATED IN THE FIELD. THE CONTRACTOR SHALL LOCATE EXISTING UTILITIES A MINIMUM OF TWO WEEKS IN ADVANCE OF THE CONSTRUCTION OPERATIONS IN THE VICINITY OF THE UTILITIES. ANY DAMAGE INCURRED BY THE CONTRACTOR SHALL BE REPAIRED IMMEDIATELY AT THE CONTRACTOR'S EXPENSE. THE CONTRACTOR SHALL NOTIFY THE FOLLOWING UTILITIES OR AGENCIES AT LEAST FIVE DAYS BEFORE STARTING WORK SHOWN ON THESE PLANS:
 - MISS UTILITY - 1-800-257-7777
 - BALTIMORE GAS & ELECTRIC COMPANY - UNDERGROUND ELECTRIC DISTRIBUTION ENGINEERING "DAMAGE CONTROL" 234-5691
 - BALTIMORE GAS & ELECTRIC COMPANY - UNDERGROUND GAS DISTRIBUTION ENGINEERING "DAMAGE CONTROL" 232-5533
 - CHESAPEAKE AND POTOMAC TELEPHONE COMPANY 752-9976
 - TRAFFIC DIVISION - 992-2430
 - HOWARD COUNTY CABLE TV - 464-1156
 - BUREAU OF UTILITIES - HOWARD COUNTY - 992-2366
- CONSTRUCTION SHALL BE COMPLETED IN ACCORDANCE WITH HOWARD COUNTY STANDARD SPECIFICATIONS AND DETAIL FOR CONSTRUCTION DESIGN MANUAL VOLUME IV.
- ALL NEW SIGNAL HEADS SHALL BE SECURELY WRAPPED AND/OR BAGGED IN BURLAP, PRIOR TO SIGNAL BEING PLACED IN SERVICE.
- THE CONTRACTOR SHALL COMPLY WITH OSHA AND MSHA CODES.
- THE CONTRACTORS SHALL COMPLY WITH THE FOLLOWING:
 - MAINTAIN SIX INCHES MINIMUM CLEARANCE WITH ALL UNDERGROUND UTILITIES AND ALL OVERHEAD CLEARANCES SHALL BE IN ACCORDANCE WITH THE MARYLAND HIGH VOLTAGE ACT.
- THE CONTRACTOR WILL SUPPLY ALL THE OTHER HARDWARE AND AUXILIARY EQUIPMENT REQUIRED FOR THE COMPLETION OF THE PROJECT AND ENSURE PROPER SIGNAL OPERATION AS DESIGNED AND SHOWN ON THE PLANS.

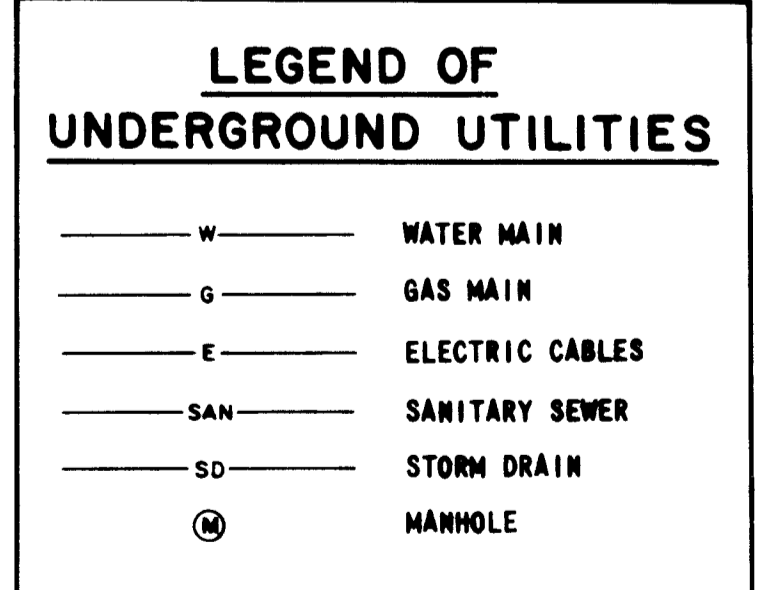
CONSTRUCTION DETAILS

- INSTALL 27" STEEL POLE WITH TWIN 25' AND 45' MAST ARMS, 15' LIGHTING ARM AND LUMINAIRE, SIGNAL HEADS AND SIGN AS SHOWN (NOTE: INSTALL 1-2" 90° ELBOW)
- INSTALL 27" STEEL POLE WITH TWIN 25' AND 50' MAST ARMS, 15' LIGHTING ARM AND LUMINAIRE, AND SIGNAL HEADS AND SIGN AS SHOWN (NOTE: INSTALL 1-2" 90° ELBOW)
- INSTALL BASE MOUNTED CABINET AND CONTROLLER WITH ALL NECESSARY EQUIPMENT (NOTE: INSTALL 2-4" PVC 90° ELBOWS)
- INSTALL 6'x30' QUADRUPOLE LOOP DETECTOR (2-4-2 TURNS) LOOP WIRE ENCASED IN FLEXIBLE TUBING
- INSTALL 6'x6' LOOP DETECTOR (3 TURNS) LOOP WIRE ENCASED IN FLEXIBLE TUBING
- INSTALL 2" POLYVINYL CHLORIDE ELECTRICAL CONDUIT (TRENCHED)
- INSTALL 2" GALVANIZED STEEL ELECTRICAL CONDUIT (PUSHED)
- 2" GALVANIZED STEEL ELECTRICAL CONDUIT (TRENCHED - FOR FEED) INSTALLED BY B.G.&E.
- INSTALL 3" POLYVINYL CHLORIDE ELECTRICAL CONDUIT (TRENCHED)
- INSTALL 3" GALVANIZED STEEL ELECTRICAL CONDUIT (PUSHED)
- INSTALL 4" POLYVINYL CHLORIDE ELECTRICAL CONDUIT (TRENCHED)
- INSTALL HANDBOX
- INSTALL 1" GALVANIZED STEEL CONDUIT SLEEVE FOR DETECTOR WIRE LEAD-IN
- PROPOSED UNDERGROUND FEED FROM B.G.&E. POWER PEDESTAL AND TRANSFORMER INSTALLED BY B.G.&E.
- GROUND MOUNTED W3-3 AND D3-2 SIGNS INSTALLED BY OTHERS
- GROUND MOUNTED R3-7R SIGN INSTALLED BY OTHERS
- GROUND MOUNTED W3-3 SIGN INSTALLED BY OTHERS
- 4" WHITE LANE LINE MARKING BY OTHERS
- 4" YELLOW LANE LINE MARKING BY OTHERS
- 24" WHITE STOP LINE MARKING BY OTHERS
- WHITE RIGHT ARROW PAVEMENT MARKING BY OTHERS
- WHITE LEFT ARROW PAVEMENT MARKING BY OTHERS
- WHITE MARKING "ONLY" BY OTHERS
- MAST ARM MOUNTED "NO TURN ON RED" (R10-11b) SIGN INSTALLED BY OTHERS
- INSTALL 6'x40' QUADRUPOLE LOOP DETECTOR (2-4-2 TURNS) LOOP WIRE ENCASED IN FLEXIBLE TUBING
- 12" WHITE CROSSWALK MARKING BY OTHERS



PHASE AND SEQUENCE DIAGRAM	SIGNAL HEADS				
	1	2	3-4	5-6	7-8
PHASE 1+6	G	G	R	R	R
PHASE 1+6 CLEAR	Y	Y	R	R	R
PHASE 2+6	G	G	G	R	R
PHASE 2+6 CLEAR	Y	Y	Y	R	R
PHASE 4+8	R	R	R	G	G
PHASE 4+8 CLEAR	R	R	R	Y	Y
FLASH	FL/Y	FL/Y	FL/Y	FL/R	FL/R

- SIGNS**
 NO 9 & 11
 LEFT TURN YIELD ON GREEN
 R10-12
 NO 10
 ONLY
 R3-5R
 NO 12
 R-3-6



746

DEPARTMENT OF PUBLIC WORKS HOWARD COUNTY, MARYLAND Director of Public Works Chief, Traffic Engineering Division		CENTURY ENGINEERING, INC. CONSULTING ENGINEERS - PLANNERS 32 WEST ROAD TOWSON, MARYLAND 21204		DES RWH DRN JAS CHK DATE 10-4-89		REVISION AS BUILT 3-6-91		TRAFFIC SIGNAL PLAN SNOWDEN RIVER PARKWAY & MINSTREL WAY HOWARD COUNTY TRAFFIC CONTRACT NUMBER T-7047C00 600' SCALE MAP NO. BLOCK NO.		CAPITAL PROJECT T-7047 CC SCALE AS SHOWN SHEET 1 OF 1	
--	--	--	--	---	--	--------------------------------	--	--	--	--	--

SNOWMINS