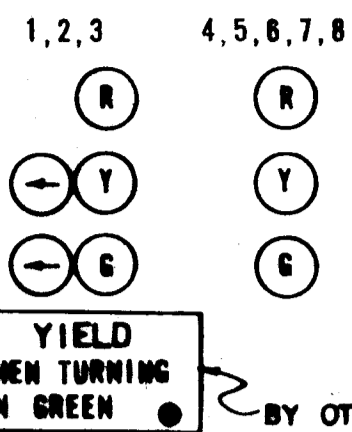


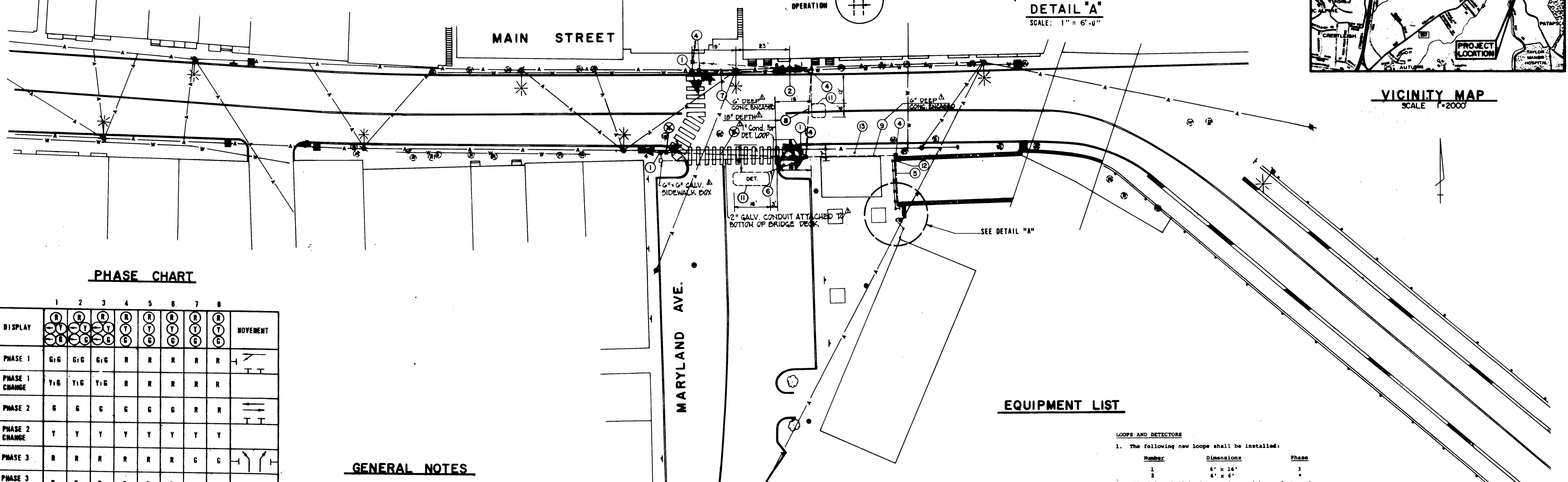
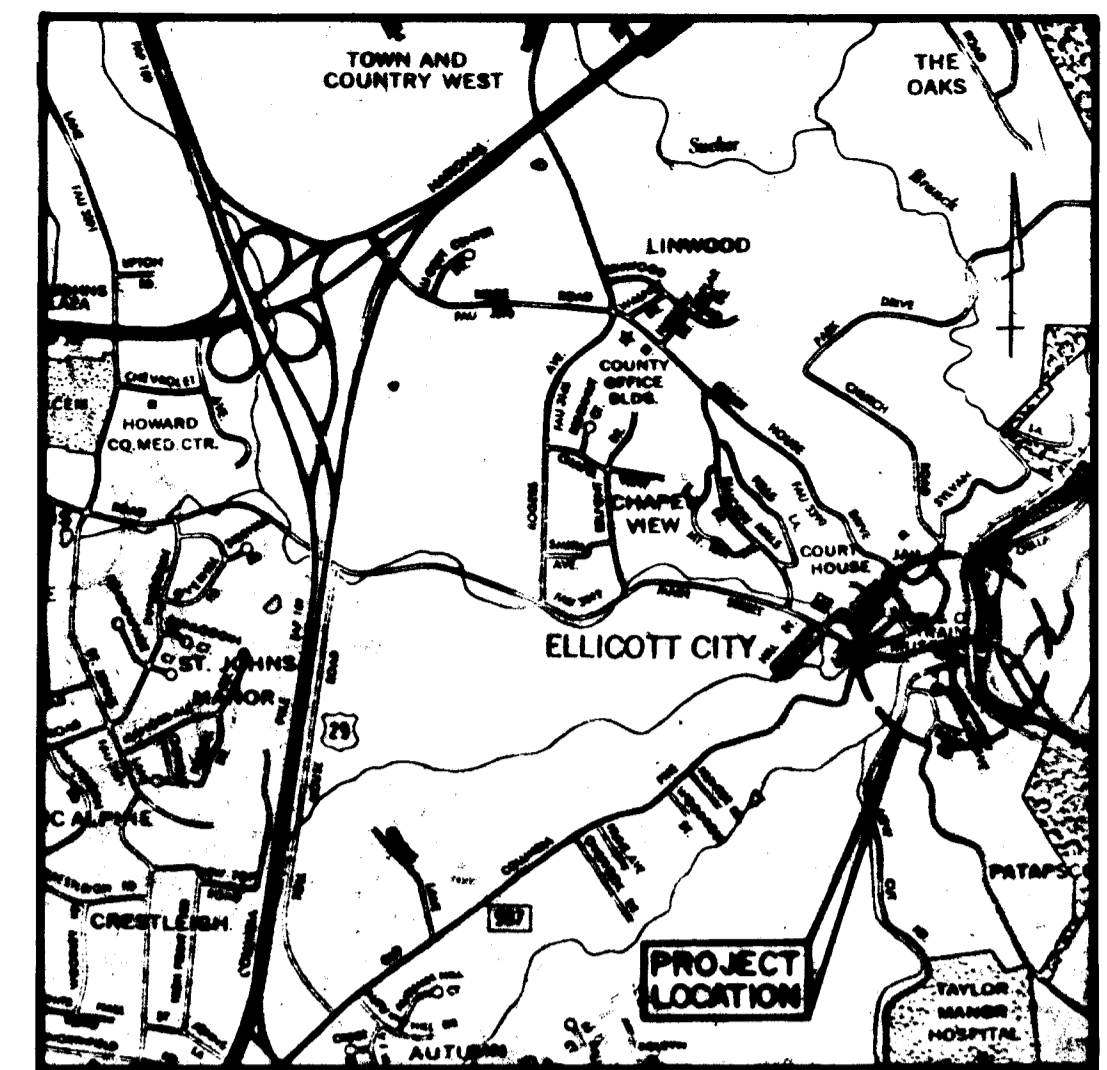
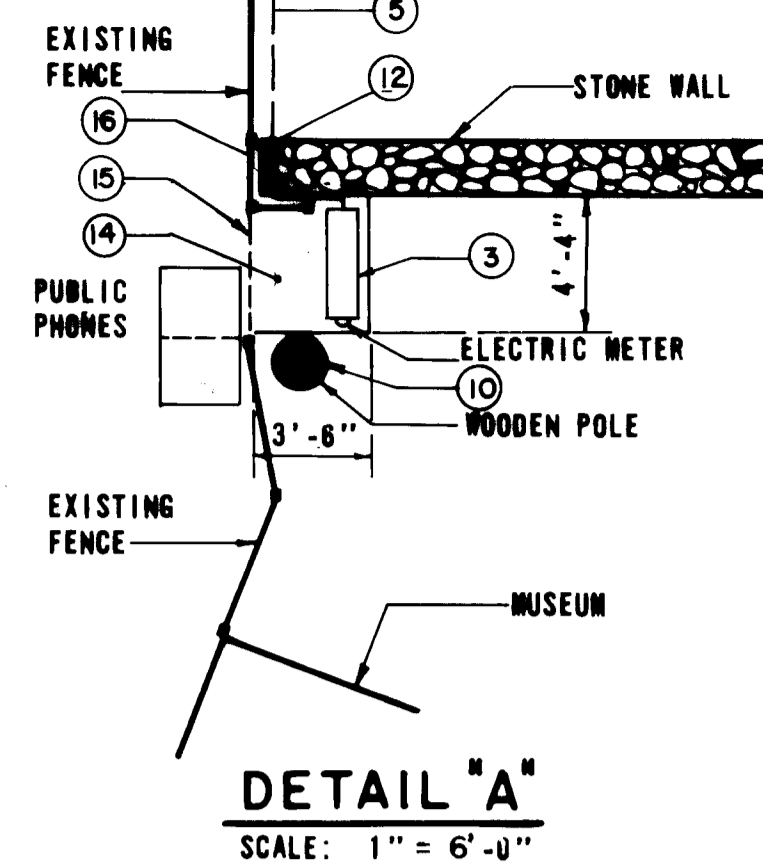
CONSTRUCTION DETAILS

1. Install 11" pedestal and signals as shown (Note: One 2" 90° Elbow).
2. Install 11" pedestal and signals as shown (Note: Two 2" 90° Elbows).
3. Install base mounted cabinet and controller with all necessary equipment (Note: One 2" 90° Elbow and One 3" 90° Elbow). Mount Electric Meter on Cabinet.
4. Install Handbox.
5. Install 3" galvanized electrical conduit attached to culvert.
6. Install 1" galvanized electrical conduit sleeve for detector wire.
7. Install 2" polyvinyl chloride electrical conduit.
8. Install 2" galvanized electrical conduit.
9. Install 4" polyvinyl chloride electrical conduit.
10. Install 2" galvanized elbow to surface next to pole for power feed.
11. Install loop detector wire and connect to handbox.
12. Install 3" galvanized conduit thru 2" stone wall of culvert.
13. Replace entire sidewalk slab back from curb to undisturbed contraction or construction joint on southeast corner.
14. Construct 4'4" x 3'6" concrete pad for control cabinet.
15. Remove approximately 5' of fence.
16. Install two new fence posts, and reinstall two short sections of reused or new (Contractor's option) fence.

SIGNALS



Aerial C&P and T.V. Cables on north side of Main Street must be raised by owners at County's expense.



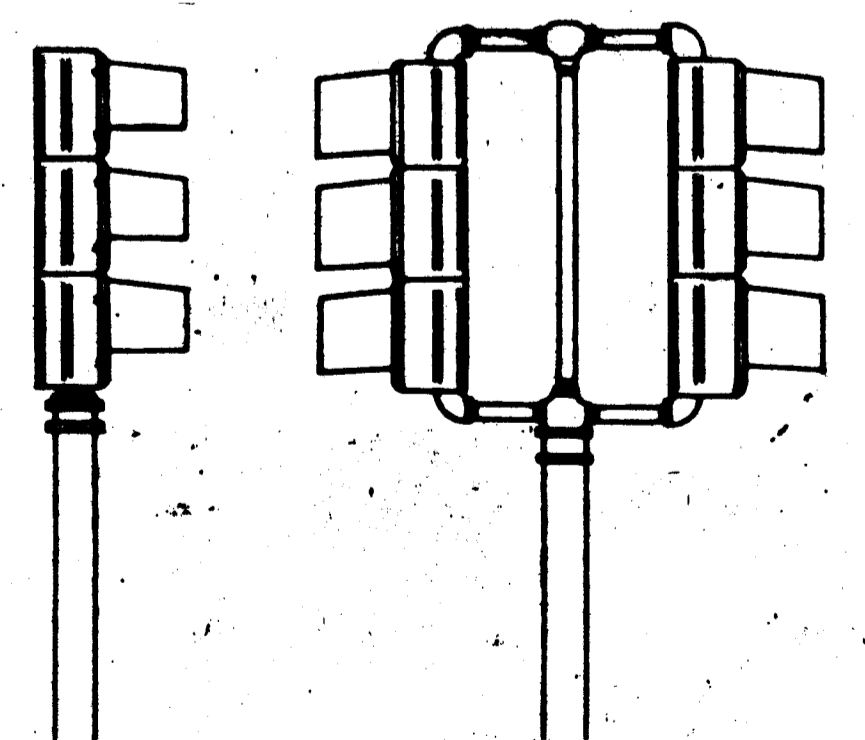
PHASE CHART

	1	2	3	4	5	6	7	8	MOVEMENT
DISPLAY	(G)	(G)	(G)	(R)	(R)	(R)	(R)	(R)	→
PHASE 1	G:G	G:G	G:G	R	R	R	R	R	→
PHASE 1 CHANGE	Y:G	Y:G	Y:G	R	R	R	R	R	→
PHASE 2	G	G	G	G	G	G	R	R	←
PHASE 2 CHANGE	Y	Y	Y	Y	Y	Y	Y	Y	←
PHASE 3	R	R	R	R	R	R	G	G	↑
PHASE 3 CHANGE	R	R	R	R	R	R	Y	Y	↑
FLASHING OPERATION	FL. Y	FL. Y	FL. Y	FL. Y	FL. Y	FL. Y	FL. R	FL. R	↑

GENERAL NOTES

1. All highway marking and signing shall be the responsibility of the Division of Traffic Engineering of the Bureau of Engineering Department of Public Works, of Howard County, Maryland and shall not be considered part of this contract.
2. a. Approximate location of existing utilities is shown. The Contractor shall take all necessary precautions to protect existing utilities and to maintain uninterrupted service. Any damage incurred shall be repaired immediately to the satisfaction of the Engineer by the Contractor at the Contractor's expense.
b. Contractor shall locate and mark the location of all existing utilities a minimum of two weeks in advance of construction operations in vicinity of utilities. Cost shall be included in the unit prices bid for excavation and backfill for traffic signal appurtenances.
c. Contractor shall notify the following utilities or agencies at least five (5) days before starting work shown on these plans:
- Miss Utility (Collect) 1-559-0100
- Baltimore Gas & Electric Company - Underground Electric Distribution Engineering "Damage Control" - 234-5691
- Baltimore Gas & Electric Company - Underground Gas Distribution Engineering "Damage Control" - 234-5533
- Chesapeake and Potomac Telephone Co. - 752-9976
- Traffic Division - 392-2872
- Howard County Cable T.V. - 461-1156
d. The Contractor's work shall clear all utilities by a minimum of 6" and clear all poles by a minimum of 2'-0" or the Contractor shall tunnel, as required. Cost for tunneling or bracing at poles shall be included in the unit prices bid for excavation and backfill for traffic signal appurtenances.
3. All materials and workmanship employed under this contract shall conform with the "GENERAL SPECIFICATIONS FOR INSTALLATION OF AND EQUIPMENT FOR TRAFFIC SIGNALS FOR HOWARD COUNTY DEPARTMENT OF PUBLIC WORKS" dated October 7, 1974; revised February 18, 1976, and included in the contract specifications.
4. All disturbed areas shall be properly restored in accordance with the Contract Specifications.
5. All new signal heads shall be securely wrapped and/or bapped in burlap, prior to signal being placed in service.

POST TOP MOUNTED



EQUIPMENT LIST

- LOOPS AND DETECTORS**
1. The following new loops shall be installed:

Number	Dimensions	Phase
1	6' x 16'	3
2	6' x 6'	4
 2. All wiring shall be in accordance with manufacturer's recommendations for correct operation.
 3. The loop shall operate in presence mode.
 4. Delayed timer vehicle loop detector shall be Sarasota 2357/MS or approved equal.
 - * Not connected under this contract: deliver one detector amplifier to engineer.
- SIGNAL HEADS**
1. The Contractor shall provide the following new signal heads:

Signal Number	Dimensions
1, 2, 3	12" diameter red, amber, green, amber arrow, and green arrow
4, 5, 6, 7, 8	12" diameter red, amber, and green
 2. All signals shall have bronze baked enamel finish and shall be furnished with tunnel visors. All signals shall be vertically mounted on the pedestal pole with rigid adjustable brackets.
- POLES**
1. Four (4) 12' pedestals with mounting assembly for two (2) multi-section heads (12" indications) on each pole.
 2. Finish shall be all-weather bronze paint.
- UNDERGROUND WIRING**
1. Underground wiring shall be placed in new conduits under the sidewalk or road surface as shown on the Contract Drawings.
 2. The conduit shall be sized to accommodate the addition of future wiring for detectors, vehicular signals, and pedestrian (WALK/DO NOT WALK) signal heads.
 3. The use of direct lay cable or a combination of conduit and direct lay cable shall not be acceptable.
 4. The Contractor shall furnish an "as-built" drawing as per "General Specifications - 4.02b".

DEPARTMENT OF PUBLIC WORKS
 HOWARD COUNTY, MARYLAND
 Director of Public Works Date: 2/16/82
 Chief Bureau of Engineering Date: 2/16/82
 Chief Roads, Bridges, Storm Drainage Division Date: 2/16/82

KILDE CONSULTANTS, INC.
 ENGINEERS AND ARCHITECTS
 1000 W. ...
 [Signature]

TRAFFIC SIGNAL PLAN

MAIN STREET & MARYLAND AVE.
 CAPITAL PROJECT C-0176
 HOWARD COUNTY MARYLAND

REV#	REV. DATE	REV. DESCRIPTION	BY
1	2-9-82	AS-BUILT NOTES	M.W.

SCALE: 1" = 20'
 DATE: 2-9-82
 N.C.M. DESIGNED BY: V.V.
 DRAFTED BY: J.W.E.
 CHECKED BY:

#7460

MAINMARY