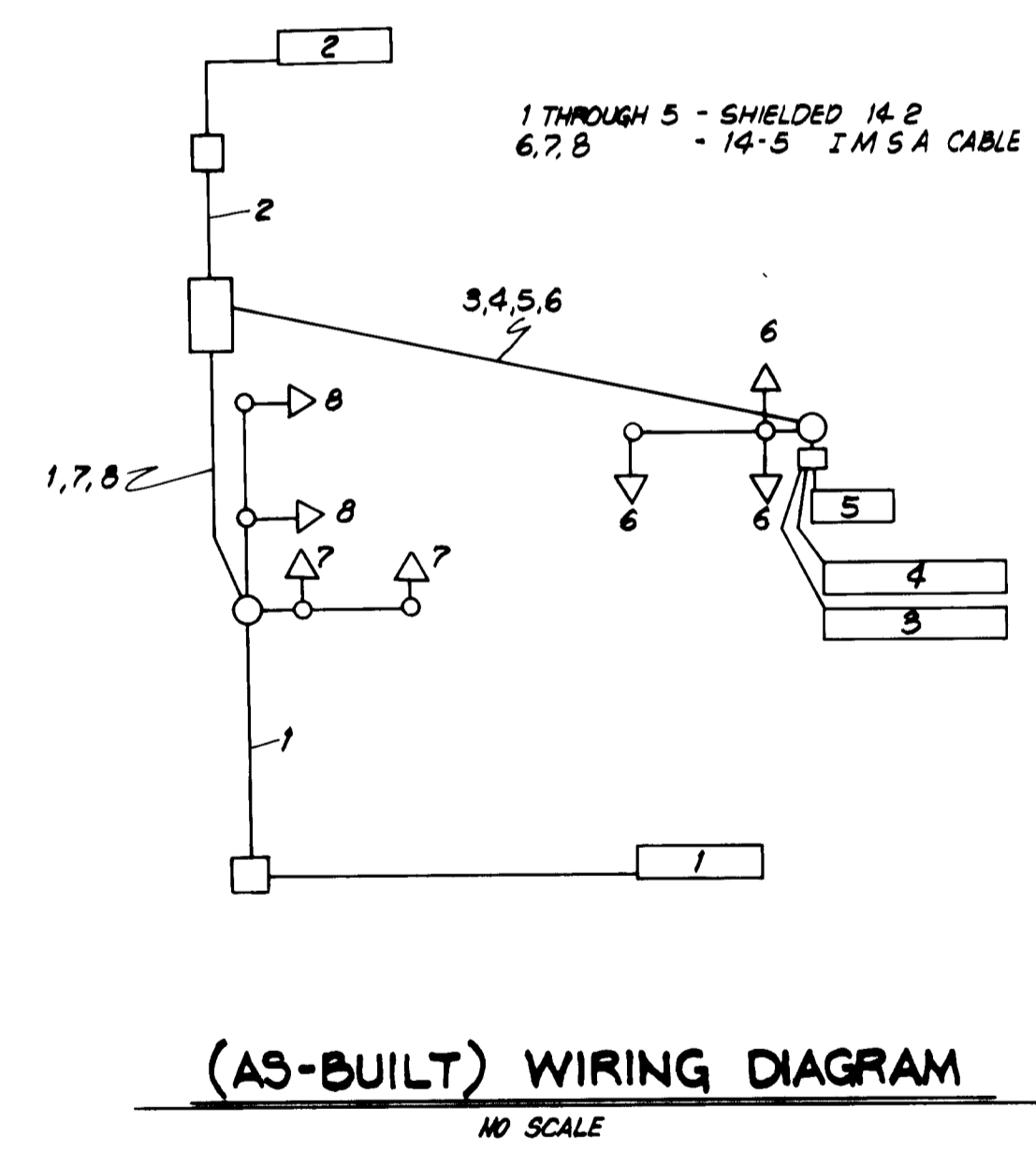
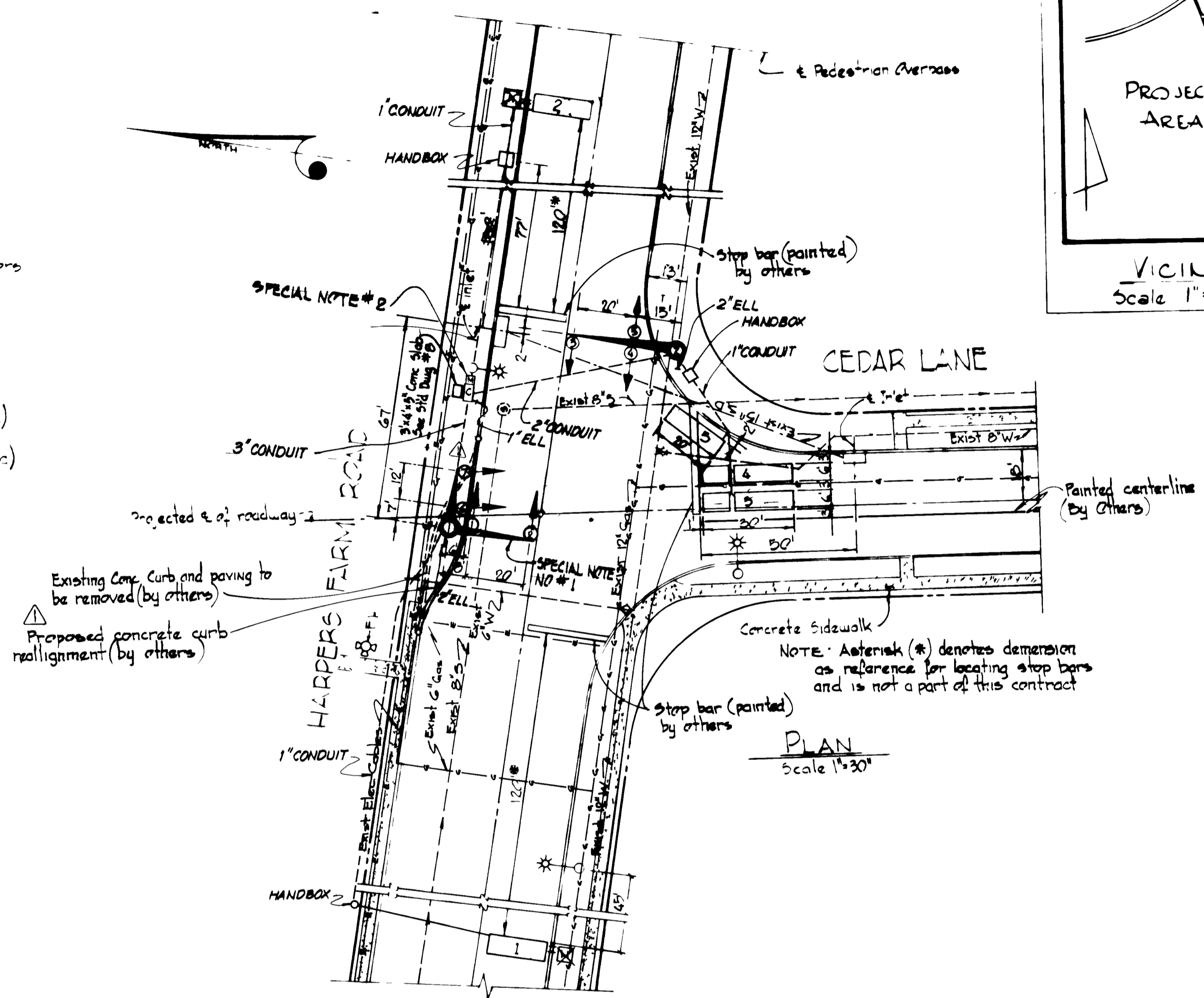


- SYMBOLS**
- Signal Heads
 - Vehicle Loop Detectors
 - ▣ Hand Box
 - ⊞ Meter
 - ⊞ Control Cabinet
 - Steel Pole (Proposed)
 - Street Light (existing)



EQUIPMENT LIST

- A. CONTROLLER**
- 1 Fully automatic two (2) phase solid state signal controller controllable for three (3) vehicle phases fully automatic plus all red pedestrian phase actuated.
 - 2 Meter and relay for each phase.
 - 3 Standard Police Panel (ref. 403 g, General Specifications) without manual override.
 - 4 All red clearance interval for each phase.
 - 5 Conflict monitor with solid state signal leading switches.
 - 6 Two (2) Loop detector amplifiers (standard).
 - 7 Minimum acceptable adjustment range:
 - a) Major & Minor street initial period and unit extension 2-20 sec
 - b) Major & Minor street extension 15-25 sec
 - c) Vehicle clearance interval and all red clearance interval up to 10 sec
 - 8 Phase mounted control cabinet large enough to accommodate the ultimate 3 phase and pedestrian phase.
 - 9 Control cabinet to be finished bronze.
 - 10 Two Loop detector amplifiers with adjustable delayed timer.

- C. SIGNAL HEADS**
- 1 A signal head shall have 10" red, 8" amber and 8" green indicators with standard lens views.
- D. POLES - WEST ARM**
- | No. (SEE PLAN) | Description |
|----------------|--|
| 1 | Twin arm support with 90° angle at separation, with 28" span supporting an ultimate 3 signal heads and the 16" span supporting 2 signal heads. |
| 2 | Supporter supports 3 signal heads. |
- Poles 1" or 1 1/2" diameter minimum clear with exterior finish to be applied in the field.
- Pole Design - style and appearance equivalent to UNION METAL DESIGN 50900

- E. SPECIAL NOTE #1**
- Signal heads 18" must be mounted to a maximum clearance of 16' above the roadway surface to the maximum visibility from beyond 200' to 250'.
- F. SPECIAL NOTE #2**
- In accordance with the B44E requirements, a hinged steel (18ga) or aluminum (18ga) enclosure with hoop, shall be provided for vandal protection.

GENERAL NOTES

- 1 The Contractor shall not be responsible for highway markings.
- 2 The timing of the Traffic Signal System shall be furnished by the Traffic Engineer (Reference 403 g, General Specifications).
- 3 The Contractor shall comply with the General Specifications for Installation of and Equipment for Traffic Signals prepared by Howard County Dept. of Public Works, Bureau of Engineering, Division of Traffic Engineering.
- 4 The Contractor shall locate all underground utilities prior to construction.
- 5 All disturbed areas shall be seeded and mulched.

APPROVED	<i>P. J. Reed</i>	3-18-77	DIRECTOR OF PUBLIC WORKS
APPROVED	<i>James M. Ireland</i>	2/25/77	CHIEF BUREAU OF HIGHWAYS
APPROVED	<i>W. O. Pollock</i>	3-16-77	CHIEF BUREAU OF ENGINEERING
APPROVED	<i>James E. Funder</i>	2/29/77	CHIEF DIV. OF TRAFFIC ENG.

3-2-77	RELOCATED WEST ARM NO. 1 & RELOCATED CONCRETE CURBS	△
Rev Date	Revision Description	Rev No
HOWARD COUNTY DEPARTMENT OF PUBLIC WORKS BUREAU OF ENGINEERING		
TRAFFIC SIGNAL CONSTRUCTION PLAN AND EQUIPMENT LIST		
CAPITAL IMPROVEMENT PROJ TG-7002 HARPERS FARM ROAD AT CEDAR LANE		
Scale as Noted	Designed Division of Traffic Engineering	
Date: March 12, 1976		
Sheet 1 of 1		
Drawing No T-3-12		