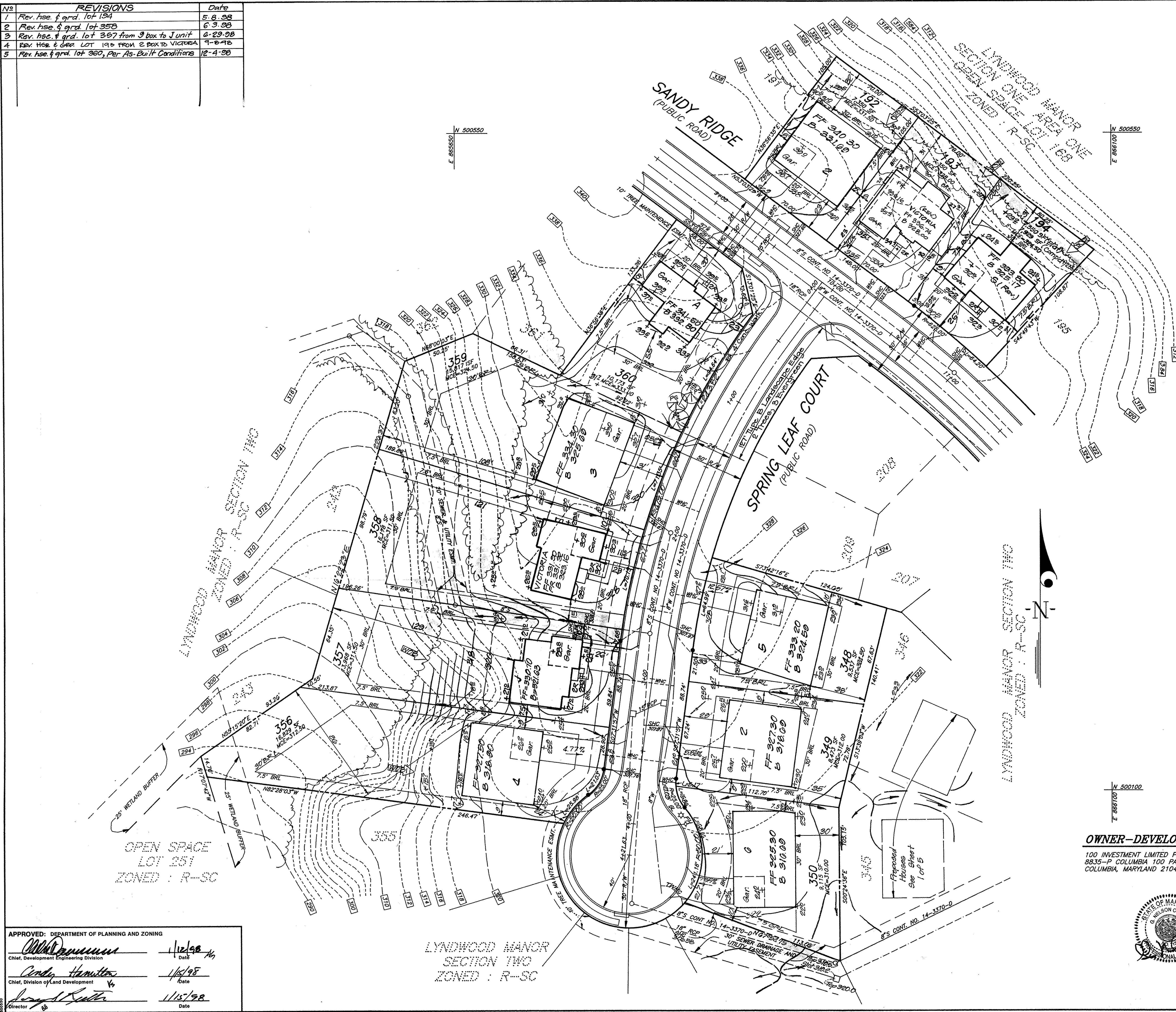


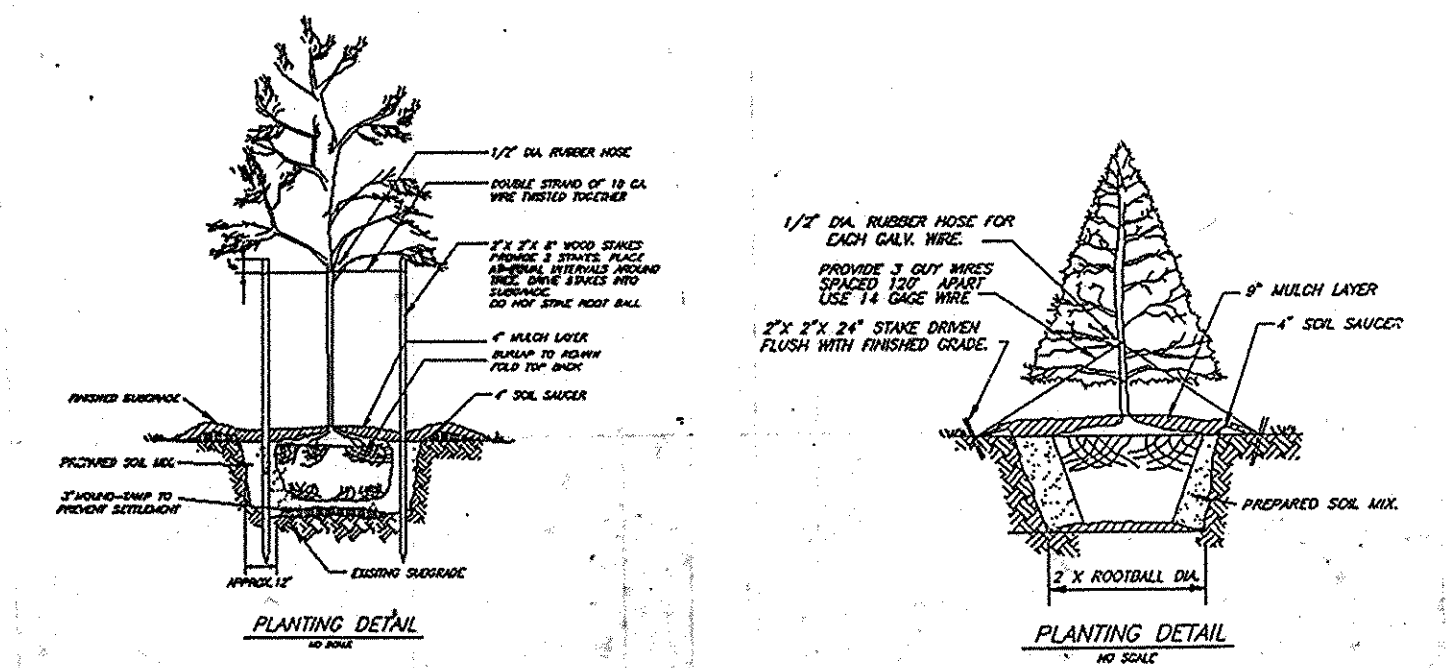
No	REVISIONS	Date
1	Rev. hse. & grd. lot 194	5-8-98
2	Rev. hse. & grd. lot 358	6-3-98
3	Rev. hse. & grd. lot 357 from 3 box to Junit	6-29-98
4	Rev. Hse. & Grd. LOT 195 FROM 2 BOX TO VICTORIA	7-10-98
5	Rev. hse. & grd. lot 360, Per As-Built Conditions	12-4-98



PLANT SCHEDULE

KEY	QTY	PLANT NAME	SIZE	REMARKS
QP	6	QUERCUS PALUSTRIS Pin Oak	2-3" Cal. 12-14' Ht.	B & B Heavy
PS	8	PINUS STROBUS White Pine	6-8' Ht.	B & B Heavy

- NOTES:
- ALL PLANTING SHALL BE DONE IN ACCORDANCE WITH THE BALTO./MASH. LANDSCAPE SPECIFICATIONS OF L.C.A.M.W.
  - CONTRACTORS SHALL VERIFY THE LOCATION OF ALL UNDERGROUND UTILITIES PRIOR TO DIGGING.
  - ALL PLANT MATERIALS TO MEET A.A.N. STANDARDS.
  - FINAL LOCATIONS OF PLANT MATERIAL MAY VARY PER FINAL FIELD CONDITIONS PLANT SCHEDULE



SCHEDULE 'A' PERIMETER LANDSCAPE EDGE

Category	Adjacent to Roadways			TOTALS
	200	347	360	
Landscape Type	B	B	B	B
Linear Feet of Road Frontage	130	112	127	378
Number of Plants Required				
Shade Trees 1/30	2	2	2	C
Evergreen Trees 1/40				B
Shrubs				
Number of Plants Provided				
Shade Trees	2	2	2	C
Evergreen Trees	2	2	2	B

COMMENTS

SURETY AMOUNTS	\$200	\$400	\$500	\$1400

**OWNER-DEVELOPER**

100 INVESTMENT LIMITED PARTNERSHIP  
8835-P COLUMBIA 100 PARKWAY  
COLUMBIA, MARYLAND 21045



**CLARK • FINEFROCK & SACKETT, INC.**  
ENGINEERS • PLANNERS • SURVEYORS  
7135 MINSTREL WAY • COLUMBIA, MD. 21045 • (410) 381-7500 - BALTO. • (301) 621-8100 - WASH.

DESIGNED: D.M.  
DRAWN: Z.H./P.E.  
CHECKED: [Signature]  
DATE: 11-14-97

SITE DEVELOPMENT PLAN  
LOTS 192-194, 200, 201, 344-350 AND 356-360  
**LYNDWOOD MANOR**  
SECTION 2  
FIRST (1st) ELECTION DISTRICT  
HOWARD COUNTY, MARYLAND

FOR: RYAN HOMES  
11480 Cranridge Drive, Suite 128  
Owings Mills, MD 21117

SCALE: 1"=30'  
DRAWING: 2 OF 5  
JOB NO.: 05-130  
FILE NO.: 05-130-X

APPROVED: DEPARTMENT OF PLANNING AND ZONING

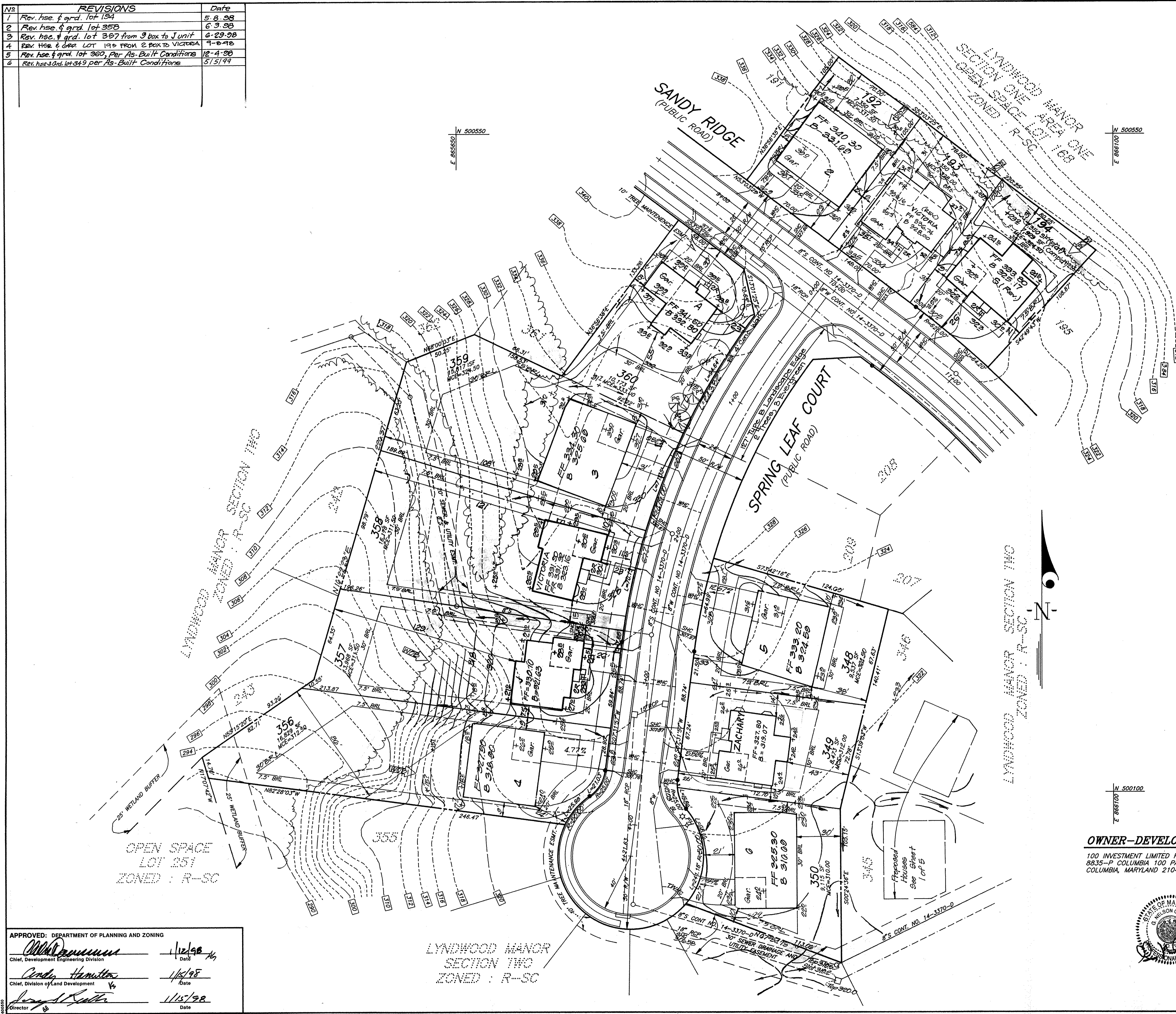
[Signature] 11/2/98  
Chief, Development Engineering Division Date

[Signature] 11/5/98  
Chief, Division of Land Development Date

[Signature] 11/15/98  
Director Date

LYNDWOOD MANOR  
SECTION TWO  
ZONED: R-SC

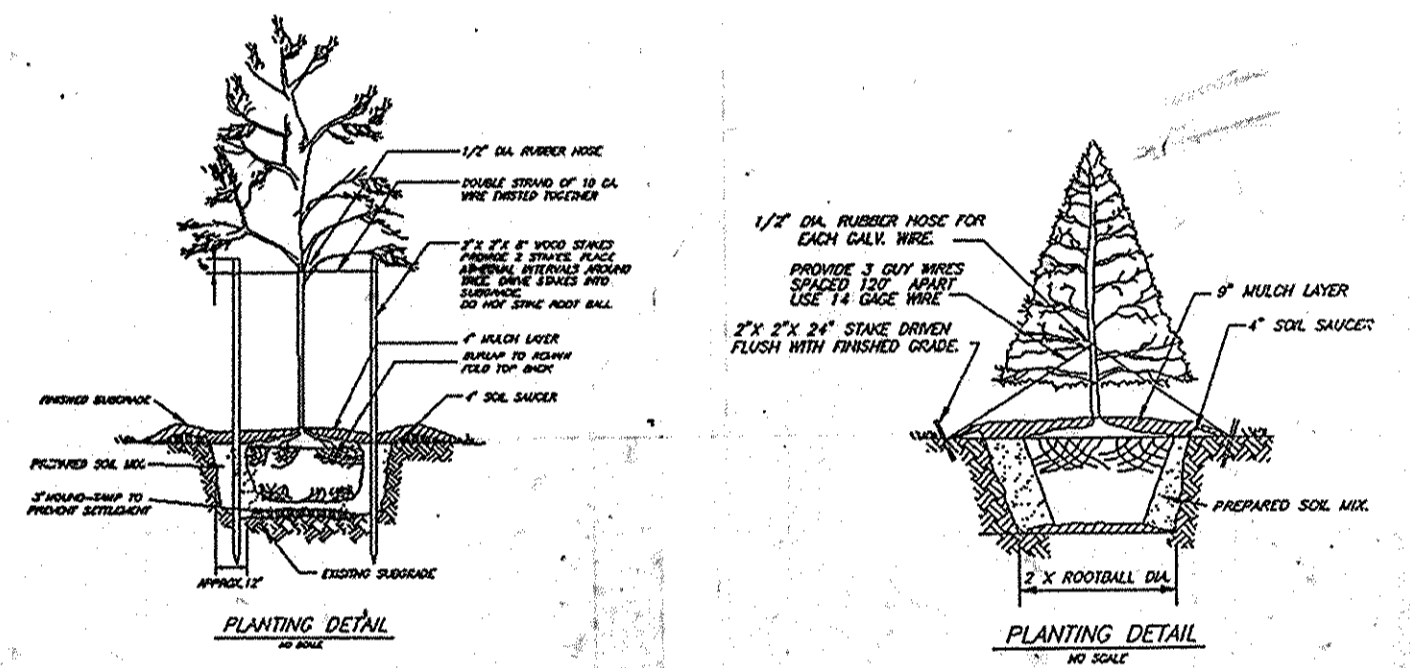
NO	REVISIONS	Date
1	Rev. hse. f. grd. lot 194	5-8-98
2	Rev. hse. f. grd. lot 358	6-3-98
3	Rev. hse. f. grd. lot 357 from 9 box to J unit	6-29-98
4	Rev. Hse. & Grd. LOT 198 FROM 2 BOX TO VICTORIA	7-8-98
5	Rev. hse. f. grd. lot 360, Per As-Built Conditions	12-4-98
6	Rev. hse. f. grd. lot 349 per As-Built Conditions	5/3/99



PLANT SCHEDULE

KEY	QTY	PLANT NAME	SIZE	REMARKS
QP	6	QUERCUS PALUSTRIS Pin Oak	2-3" Cal. 12-14' Ht.	B & B Heavy
PS	8	PINUS STROBUS White Pine	6-8' Ht.	B & B Heavy

- NOTES:
- ALL PLANTING SHALL BE DONE IN ACCORDANCE WITH THE BALTO./WASH. LANDSCAPE SPECIFICATIONS OF L.C.A.N.W.
  - CONTRACTORS SHALL VERIFY THE LOCATION OF ALL UNDERGROUND UTILITIES PRIOR TO DIGGING.
  - ALL PLANT MATERIALS TO MEET A.A.N. STANDARDS.
  - FINAL LOCATIONS OF PLANT MATERIAL MAY VARY PER FINAL FIELD CONDITIONS PLANT SCHEDULE



SCHEDULE 'A' PERIMETER LANDSCAPE EDGE	LOTS			TOTALS
	200	347	300	
Category	Adjacent to Roadways			
Landscape Type	B	B	B	B
Linear Feet of Road Frontage	130	112	127	378
Number of Plants Required				
Shade Trees, 1/80	2	2	2	C
Evergreen Trees, 1/40				
Number of Plants Provided				
Shade Trees	2	2	2	C
Evergreen Trees				
COMMENTS				
SURETY AMOUNTS	\$300	\$400	\$500	\$1400

APPROVED: DEPARTMENT OF PLANNING AND ZONING

*[Signature]* 11/2/98  
Chief, Development Engineering Division

*[Signature]* 1/15/98  
Chief, Division of Land Development

*[Signature]* 11/5/98  
Director

LYNDWOOD MANOR  
SECTION TWO  
ZONED: R-SC

OWNER-DEVELOPER

100 INVESTMENT LIMITED PARTNERSHIP  
8835-P COLUMBIA 100 PARKWAY  
COLUMBIA, MARYLAND 21045



**CLARK • FINEFROCK & SACKETT, INC.**  
ENGINEERS • PLANNERS • SURVEYORS  
7135 MINSTREL WAY • COLUMBIA, MD. 21045 • (410) 381-7500 - BALTO. • (301) 621-8100 - WASH.

DESIGNED DM	SITE DEVELOPMENT PLAN LOTS 192-194, 200, 201, 344-350 AND 356-360	SCALE 1"=30'
DRAWN Z.H./P		DRIVING 2 OF 5
CHECKED pmw	SECTION 2 FIRST (1st) ELECTION DISTRICT HOWARD COUNTY, MARYLAND	JOB NO. 05-130
DATE 11-14-97	FOR: RYAN HOMES 11480 Cromridge Drive, Suite 128 Owings Mills, MD 21117	FILE NO. 05-130-X