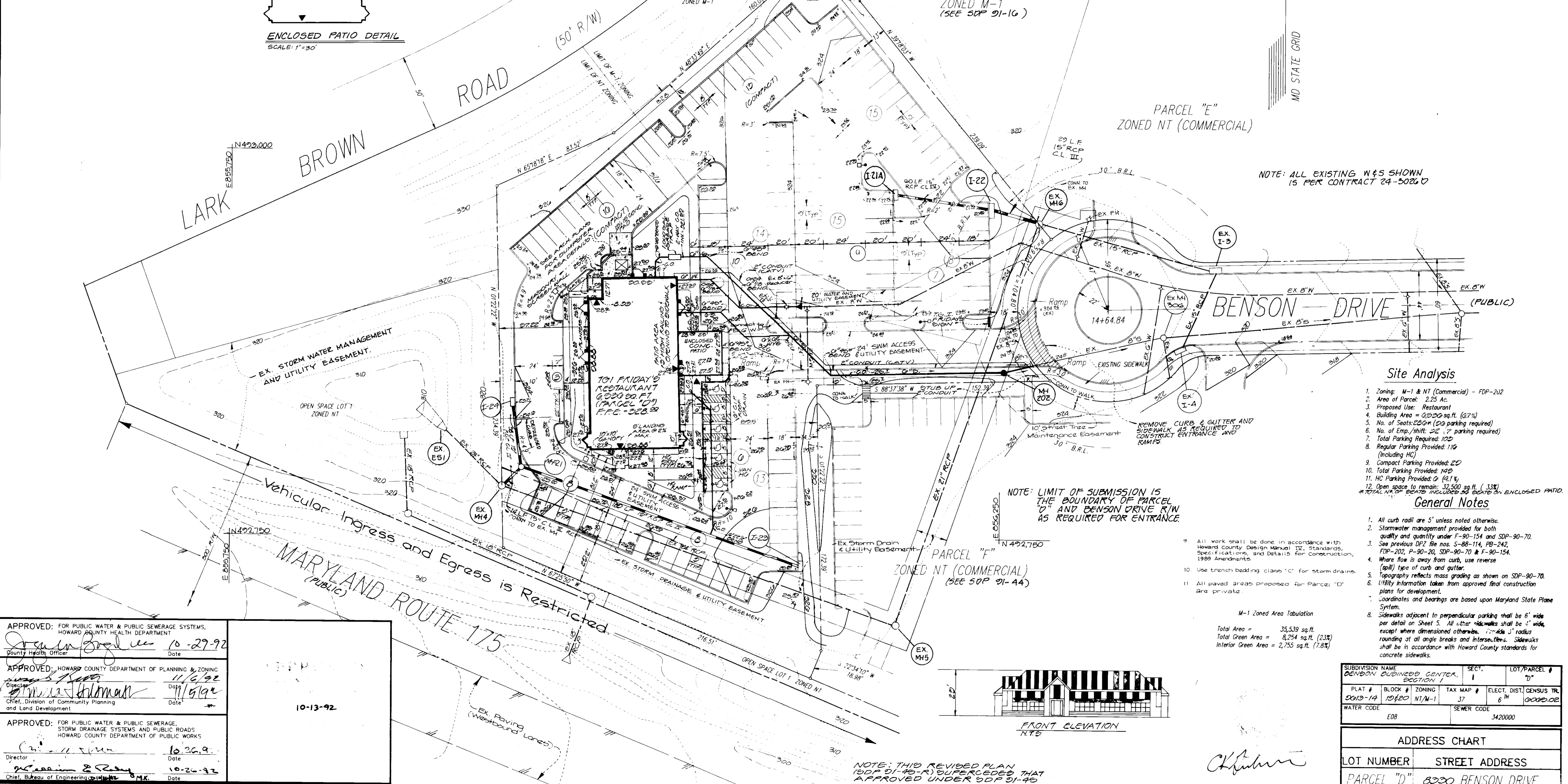
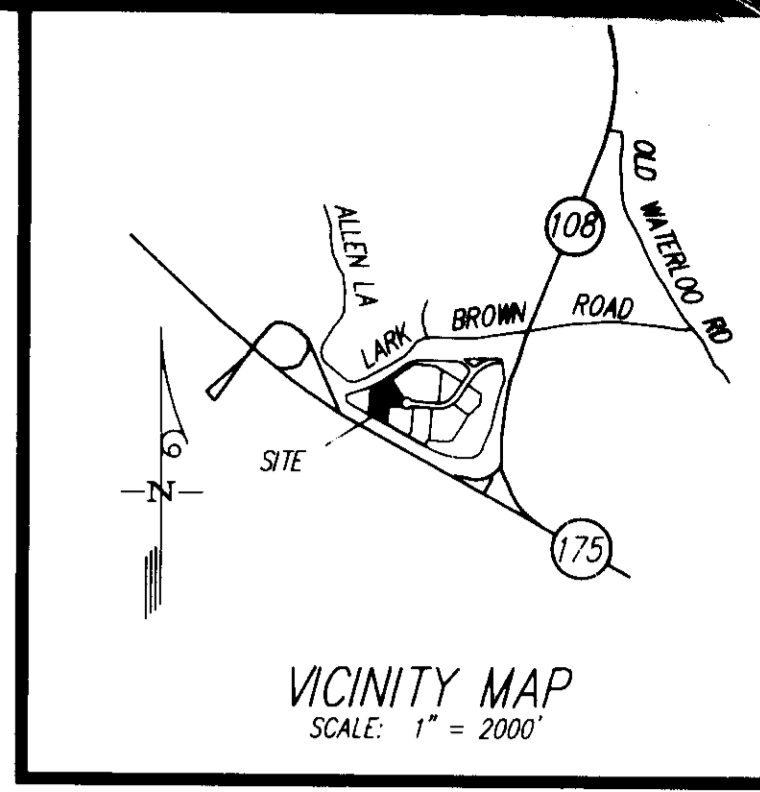
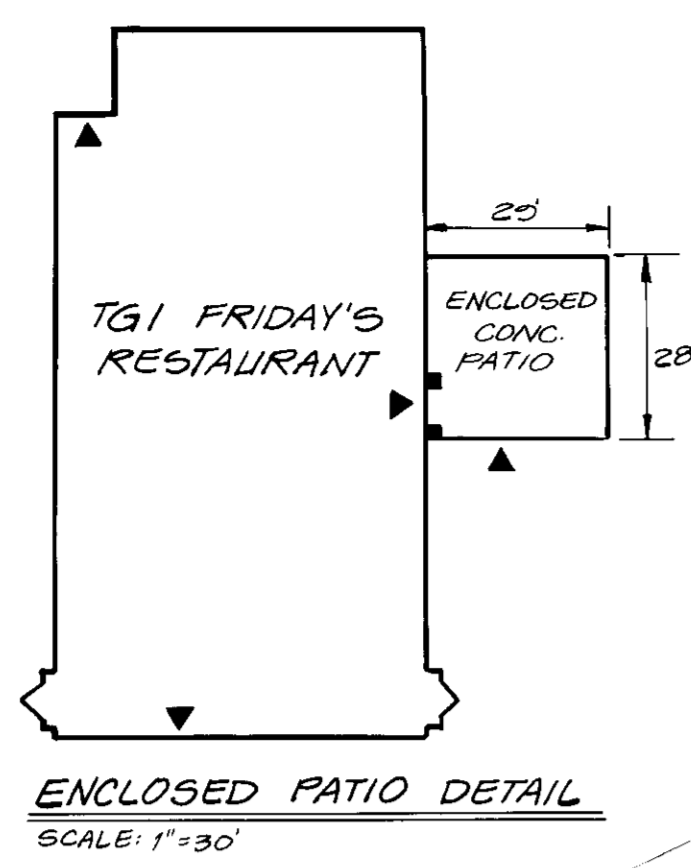


- LEGEND**
- 310 --- EX CONTOUR
 - 310 --- PROP CONTOUR
 - x 10' --- PROP SPOT SHOT CURB & GUTTER
 - ⑧ NO. OF PARKING SPACES
 - WHEEL CHAIR AISLE HANDICAP PARKING.
 - LIGHT POLE GARDCO FORM-10 #G1913-400 M.H. 20' POLE BY K.E. INDUSTRIES. #RTSP 20-50-11-BL. BLACK POWDER COAT.
 - DEPRESSED CURB & GUTTER (INCLUDES TRANSITION TO FULL CURB HEIGHT)



NOTE: ALL EXISTING W&S SHOWN 15 PER CONTRACT 24-50260

NOTE: LIMIT OF SUBMISSION IS THE BOUNDARY OF PARCEL 'D' AND BENSON DRIVE R/W AS REQUIRED FOR ENTRANCE

Site Analysis

1. Zoning: M-1 & NT (Commercial) - FDP-202
 2. Area of Parcel: 2.25 Ac.
 3. Proposed Use: Restaurant
 4. Building Area = 65,200 sq.ft. (27%)
 5. No. of Seats: 250 (250 parking required)
 6. No. of Emp./shift: 22 (77 parking required)
 7. Total Parking Required: 102
 8. Regular Parking Provided: 116 (Including HC)
 9. Compact Parking Provided: 20
 10. Total Parking Provided: 146
 11. HC Parking Provided: 6 (4.1%)
 12. Open space to remain: 32,500 sq.ft. (33%)
- *TOTAL NO. OF SEATS INCLUDES 25 SEATS IN ENCLOSED PATIO

General Notes

1. All curb radii are 5' unless noted otherwise.
 2. Stormwater management provided for both quality and quantity under F-90-154 and SDP-90-70.
 3. See previous DPZ file nos. S-88-114, PB-242, FDP-202, P-90-20, SDP-90-70 & F-90-154.
 4. Where flow is away from curbs, use reverse (spill) type of curb and gutter.
 5. Topography reflects mass grading as shown on SDP-90-70.
 6. Utility information taken from approved final construction plans for development.
 7. Coordinates and bearings are based upon Maryland State Plane System.
 8. Sidewalks adjacent to perpendicular parking shall be 6' wide per detail on Sheet 5. All other sidewalks shall be 4' wide, except where dimensioned otherwise. 7'-1/2' radius rounding at all angle breaks and intersections. Sidewalks shall be in accordance with Howard County standards for concrete sidewalks.
- M-1 Zoned Area Tabulation
 Total Area = 35,539 sq.ft.
 Total Green Area = 8,254 sq.ft. (23%)
 Interior Green Area = 2,755 sq.ft. (7.8%)



NOTE: THIS REVISED PLAN (SDP 91-45-R) SUPERCEDES THAT APPROVED UNDER SDP 91-45

APPROVED: FOR PUBLIC WATER & PUBLIC SEWERAGE SYSTEMS, HOWARD COUNTY HEALTH DEPARTMENT
 County Health Officer: [Signature] Date: 10-27-92

APPROVED: HOWARD COUNTY DEPARTMENT OF PLANNING & ZONING
 Director: [Signature] Date: 11/6/92

APPROVED: FOR PUBLIC WATER & PUBLIC SEWERAGE, STORM DRAINAGE SYSTEMS AND PUBLIC ROADS HOWARD COUNTY DEPARTMENT OF PUBLIC WORKS
 Director: [Signature] Date: 10-26-92

SUBDIVISION NAME BENSON BUSINESS CENTER SECTION 1		SECT. # 1	LOT/PARCEL # D
PLAT # 9013-14	BLOCK # 10620	ZONING NT/M-1	TAX MAP # 37
ELECT. DIST. 6 TH		CENSUS TR. 000002	
WATER CODE E08		SEWER CODE 3420000	
ADDRESS CHART			
LOT NUMBER PARCEL "D"	STREET ADDRESS 8300 BENSON DRIVE		

GLW GUTSCHICK LITTLE & WEBER, P.A.
 ENGINEERS, PLANNERS, SURVEYORS
 3909 NATIONAL DRIVE - SUITE 250 - BURTONSVILLE OFFICE PARK - BURTONSVILLE, MARYLAND 20866
 TEL: (301) 421-4024 METRO: (301) 989-2524 FAX: (301) 421-4186 DES. SCC DRN. SAC/CAO CHK. CKC

DATE	REVISION	BY	APP'R.
10-4-92	ADDED ENCLOSED PATIO AND DETAIL	TKJ	
10-12-92	REV. APPROVAL BY HOWARD COUNTY PLANNING BOARD	ED	JCL
10-12-92	REV. HG. PARKING PER G.I.L.P.	ED	JCL
10-22-92	REV. BLDG. GRADING & UTILITIES PER TENANT REQUIREMENTS	MSJ	JCL

PREPARED FOR:
 THE HOWARD RESEARCH & DEVELOPMENT CORPORATION
 THE ROUSE BUILDING
 10275 LITTLE PATUXENT PARKWAY
 COLUMBIA, MARYLAND 21044
 (301) 992-6000

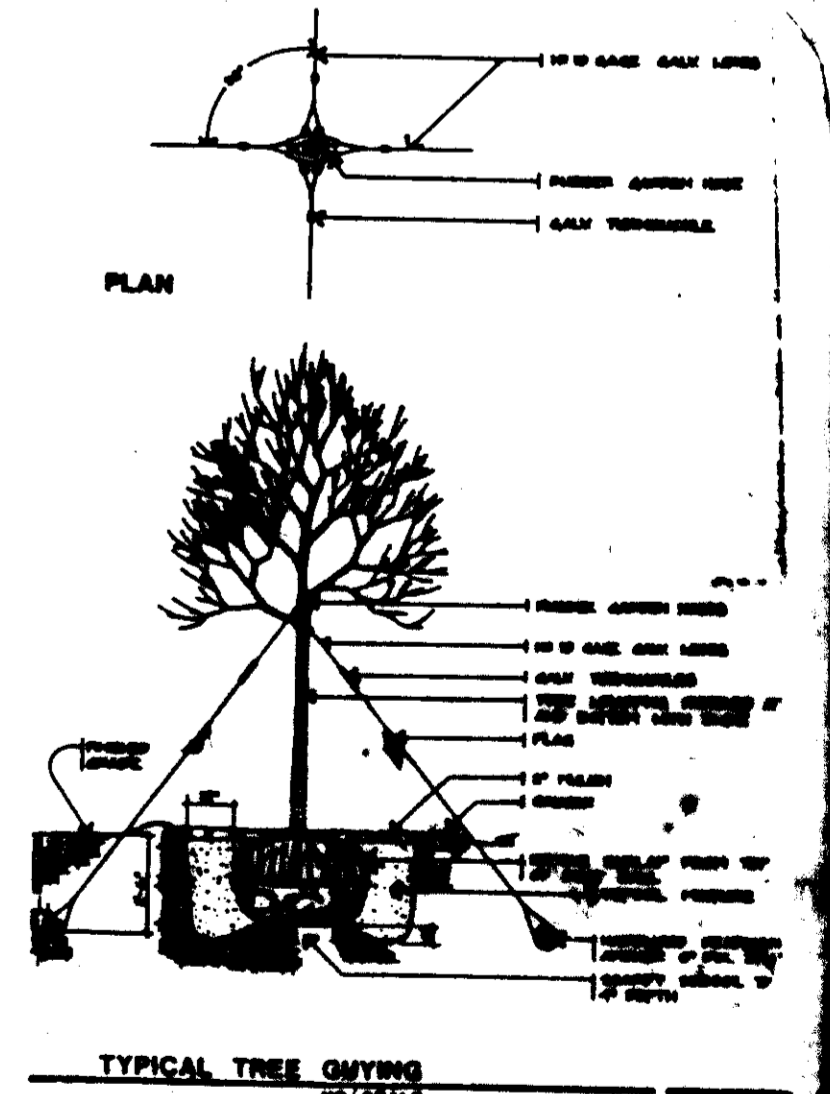
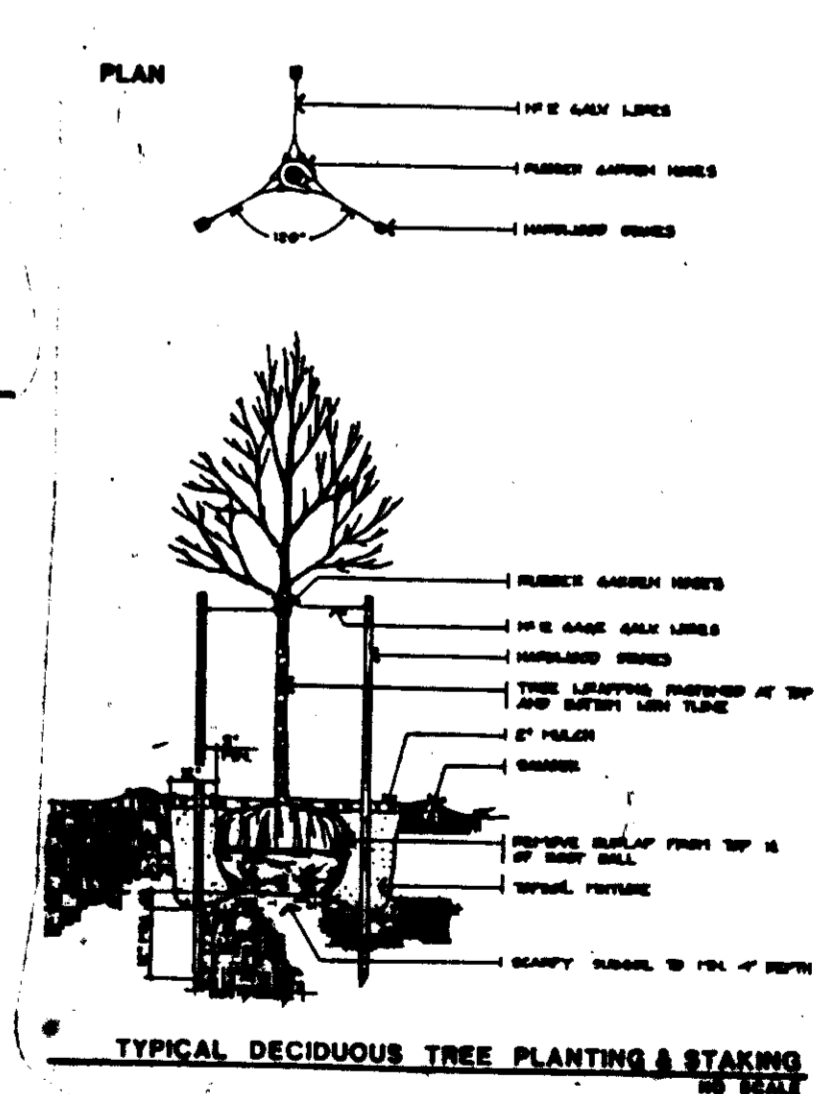
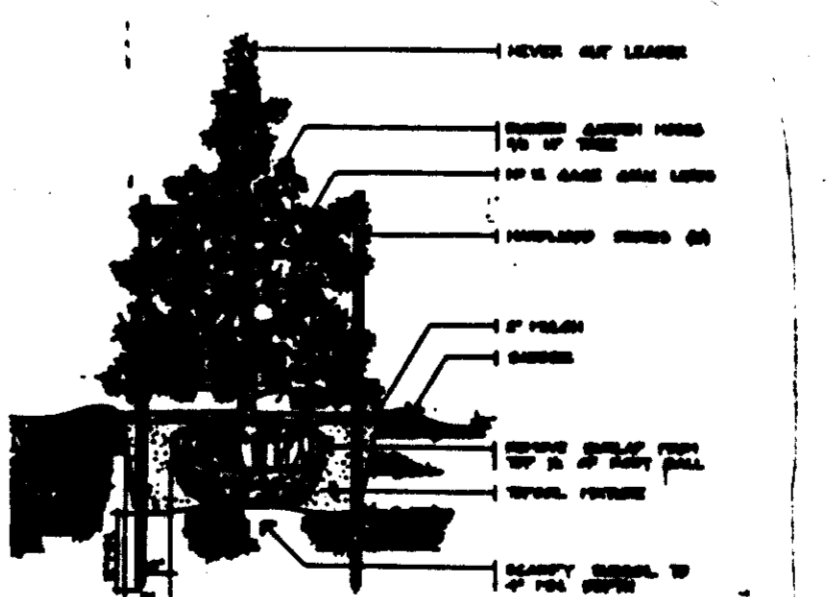
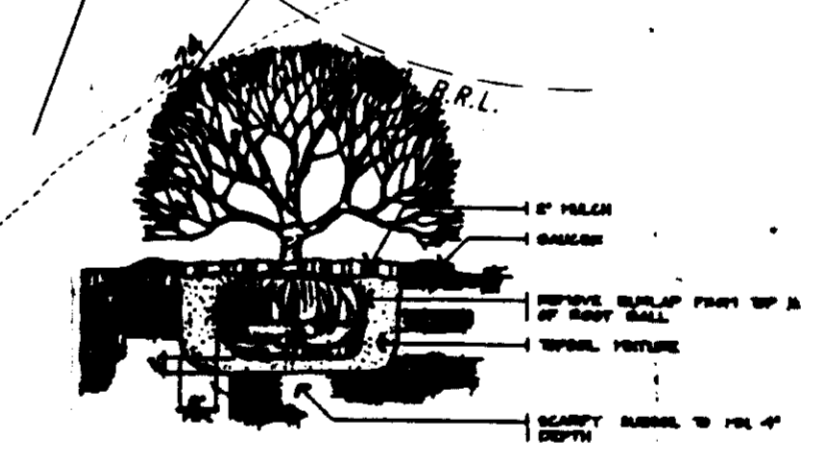
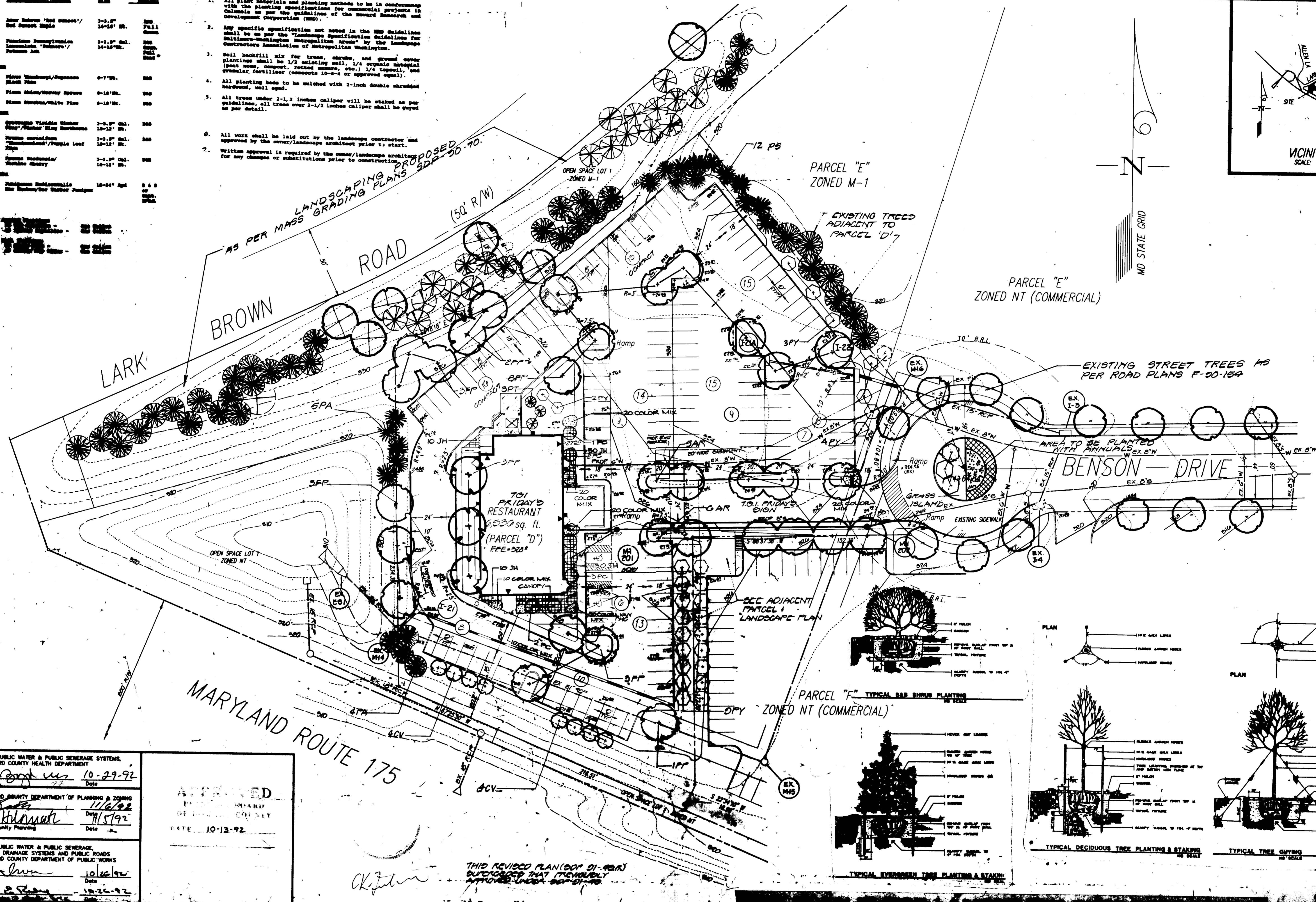
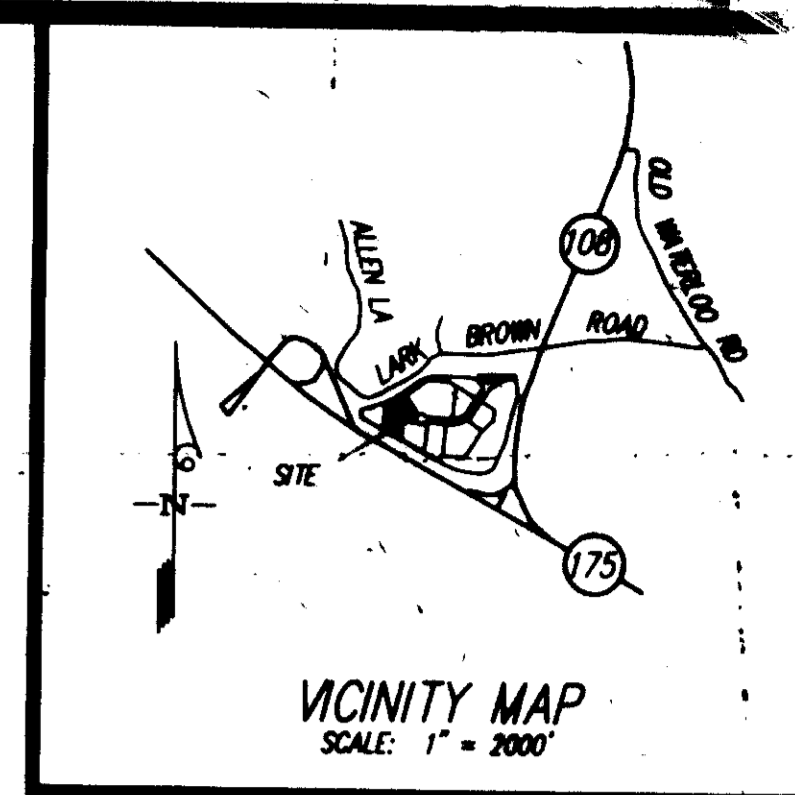
SITE DEVELOPMENT PLAN
BENSON BUSINESS CENTER
 SECTION 1 - PARCEL "D"

HOWARD COUNTY, MARYLAND
 6TH ELECTION DISTRICT

SCALE 1" = 30'	ZONING NT/M-1	G. L. W. FILE NO. 89-035
DATE NOV. 1992	TAX MAP No. 37	SHEET 1 OF 6

Item No.	Description	Qty	Remarks
11	Star Magnolia 'Red Sunset' / Red Sunset Maple	2-3" Cal. 14-16" Ht.	200
23	Fraxino Pennsylvanicum / Fraxino 'Robur' / Fraxino Int.	2-3" Cal. 14-16" Ht.	200
2	Plant Material/Specimen Plant	0-7" Ht.	200
3	Plant Material/Specimen Plant	0-10" Ht.	200
4	Plant Material/Specimen Plant	0-10" Ht.	200
5	Plant Material/Specimen Plant	0-10" Ht.	200
6	Plant Material/Specimen Plant	0-10" Ht.	200
7	Plant Material/Specimen Plant	0-10" Ht.	200
8	Plant Material/Specimen Plant	0-10" Ht.	200
9	Plant Material/Specimen Plant	0-10" Ht.	200
10	Plant Material/Specimen Plant	0-10" Ht.	200
11	Plant Material/Specimen Plant	0-10" Ht.	200
12	Plant Material/Specimen Plant	0-10" Ht.	200
13	Plant Material/Specimen Plant	0-10" Ht.	200
14	Plant Material/Specimen Plant	0-10" Ht.	200
15	Plant Material/Specimen Plant	0-10" Ht.	200
16	Plant Material/Specimen Plant	0-10" Ht.	200
17	Plant Material/Specimen Plant	0-10" Ht.	200
18	Plant Material/Specimen Plant	0-10" Ht.	200
19	Plant Material/Specimen Plant	0-10" Ht.	200
20	Plant Material/Specimen Plant	0-10" Ht.	200
21	Plant Material/Specimen Plant	0-10" Ht.	200
22	Plant Material/Specimen Plant	0-10" Ht.	200
23	Plant Material/Specimen Plant	0-10" Ht.	200
24	Plant Material/Specimen Plant	0-10" Ht.	200
25	Plant Material/Specimen Plant	0-10" Ht.	200
26	Plant Material/Specimen Plant	0-10" Ht.	200
27	Plant Material/Specimen Plant	0-10" Ht.	200
28	Plant Material/Specimen Plant	0-10" Ht.	200
29	Plant Material/Specimen Plant	0-10" Ht.	200
30	Plant Material/Specimen Plant	0-10" Ht.	200
31	Plant Material/Specimen Plant	0-10" Ht.	200
32	Plant Material/Specimen Plant	0-10" Ht.	200
33	Plant Material/Specimen Plant	0-10" Ht.	200
34	Plant Material/Specimen Plant	0-10" Ht.	200
35	Plant Material/Specimen Plant	0-10" Ht.	200
36	Plant Material/Specimen Plant	0-10" Ht.	200
37	Plant Material/Specimen Plant	0-10" Ht.	200
38	Plant Material/Specimen Plant	0-10" Ht.	200
39	Plant Material/Specimen Plant	0-10" Ht.	200
40	Plant Material/Specimen Plant	0-10" Ht.	200
41	Plant Material/Specimen Plant	0-10" Ht.	200
42	Plant Material/Specimen Plant	0-10" Ht.	200
43	Plant Material/Specimen Plant	0-10" Ht.	200
44	Plant Material/Specimen Plant	0-10" Ht.	200
45	Plant Material/Specimen Plant	0-10" Ht.	200
46	Plant Material/Specimen Plant	0-10" Ht.	200
47	Plant Material/Specimen Plant	0-10" Ht.	200
48	Plant Material/Specimen Plant	0-10" Ht.	200
49	Plant Material/Specimen Plant	0-10" Ht.	200
50	Plant Material/Specimen Plant	0-10" Ht.	200
51	Plant Material/Specimen Plant	0-10" Ht.	200
52	Plant Material/Specimen Plant	0-10" Ht.	200
53	Plant Material/Specimen Plant	0-10" Ht.	200
54	Plant Material/Specimen Plant	0-10" Ht.	200
55	Plant Material/Specimen Plant	0-10" Ht.	200
56	Plant Material/Specimen Plant	0-10" Ht.	200
57	Plant Material/Specimen Plant	0-10" Ht.	200
58	Plant Material/Specimen Plant	0-10" Ht.	200
59	Plant Material/Specimen Plant	0-10" Ht.	200
60	Plant Material/Specimen Plant	0-10" Ht.	200
61	Plant Material/Specimen Plant	0-10" Ht.	200
62	Plant Material/Specimen Plant	0-10" Ht.	200
63	Plant Material/Specimen Plant	0-10" Ht.	200
64	Plant Material/Specimen Plant	0-10" Ht.	200
65	Plant Material/Specimen Plant	0-10" Ht.	200
66	Plant Material/Specimen Plant	0-10" Ht.	200
67	Plant Material/Specimen Plant	0-10" Ht.	200
68	Plant Material/Specimen Plant	0-10" Ht.	200
69	Plant Material/Specimen Plant	0-10" Ht.	200
70	Plant Material/Specimen Plant	0-10" Ht.	200
71	Plant Material/Specimen Plant	0-10" Ht.	200
72	Plant Material/Specimen Plant	0-10" Ht.	200
73	Plant Material/Specimen Plant	0-10" Ht.	200
74	Plant Material/Specimen Plant	0-10" Ht.	200
75	Plant Material/Specimen Plant	0-10" Ht.	200
76	Plant Material/Specimen Plant	0-10" Ht.	200
77	Plant Material/Specimen Plant	0-10" Ht.	200
78	Plant Material/Specimen Plant	0-10" Ht.	200
79	Plant Material/Specimen Plant	0-10" Ht.	200
80	Plant Material/Specimen Plant	0-10" Ht.	200
81	Plant Material/Specimen Plant	0-10" Ht.	200
82	Plant Material/Specimen Plant	0-10" Ht.	200
83	Plant Material/Specimen Plant	0-10" Ht.	200
84	Plant Material/Specimen Plant	0-10" Ht.	200
85	Plant Material/Specimen Plant	0-10" Ht.	200
86	Plant Material/Specimen Plant	0-10" Ht.	200
87	Plant Material/Specimen Plant	0-10" Ht.	200
88	Plant Material/Specimen Plant	0-10" Ht.	200
89	Plant Material/Specimen Plant	0-10" Ht.	200
90	Plant Material/Specimen Plant	0-10" Ht.	200
91	Plant Material/Specimen Plant	0-10" Ht.	200
92	Plant Material/Specimen Plant	0-10" Ht.	200
93	Plant Material/Specimen Plant	0-10" Ht.	200
94	Plant Material/Specimen Plant	0-10" Ht.	200
95	Plant Material/Specimen Plant	0-10" Ht.	200
96	Plant Material/Specimen Plant	0-10" Ht.	200
97	Plant Material/Specimen Plant	0-10" Ht.	200
98	Plant Material/Specimen Plant	0-10" Ht.	200
99	Plant Material/Specimen Plant	0-10" Ht.	200
100	Plant Material/Specimen Plant	0-10" Ht.	200

- All plant materials and planting methods to be in conformance with the planting specifications for commercial projects in Columbia as per the guidelines of the Board Research and Development Corporation (BRDC).
- Any specific specifications not noted in the BRDC Guidelines shall be as per the "Landscape Specification Guidelines for Baltimore-Washington Metropolitan Area" by the Landscape Contractors Association of Metropolitan Washington.
- Soil backfill mix for trees, shrubs, and ground cover plantings shall be 1/2 existing soil, 1/4 organic material (peat moss, compost, rotted manure, etc.) 1/4 topsoil, and granular fertilizer (composts 10-5-4 or approved equal).
- All planting beds to be mulched with 2-inch double shredded hardwood, well aged.
- All trees under 2-1/2 inches caliper will be staked as per guidelines, all trees over 2-1/2 inches caliper shall be guyed as per detail.
- All work shall be laid out by the landscape contractor and approved by the owner/landscape architect prior to start.
- Written approval is required by the owner/landscape architect for any changes or substitutions prior to construction.



APPROVED: FOR PUBLIC WATER & PUBLIC SEWERAGE SYSTEMS, HOWARD COUNTY HEALTH DEPARTMENT
 Date: 10-29-92

APPROVED: HOWARD COUNTY DEPARTMENT OF PLANNING & ZONING
 Date: 11/6/92

APPROVED: FOR PUBLIC WATER & PUBLIC SEWERAGE, STORM DRAINAGE SYSTEMS AND PUBLIC ROADS, HOWARD COUNTY DEPARTMENT OF PUBLIC WORKS
 Date: 10/26/92

APPROVED
 BOARD OF ZONING ADJUSTMENT
 DATE: 10-13-92

THIS REVISED PLAN (SOP 01-92A) SUPERSEDES THAT PREVIOUSLY APPROVED UNDER SOP 01-92

LANDSCAPE PLAN

NSV

LEGEND

EX. CONTOUR
PROP. CONTOUR
PROP. SPOT SHOT
CURB & GUTTER
NO. OF PARKING SPACES

WHEEL CHAIR AISLE
HANDICAP PARKING

LIGHT POLE
GARDCO FORM-10
#41913-400 M.H.
20' POLE BY K.E. INDUSTRIES
#RTSP 20-50-11-BL
BLACK POWDER COAT.

SEDIMENT TRAP NO. 2
Stone Outlet Sediment Trap
Drainage Area =
1.74 Ac. (Pre-Development) 0.920 Ac. (Post-Development)

Storage Required (1800) = 2412 cu. ft.
Storage Depth = 4.5 feet
Cleanout Elevation = 322.25
Outlet Elevation = 322.0
Bottom Elevation = 321.5
Side Slopes = 2:1
Surface Area @ Elevation 322.0 (*L.O.S.) = 2236 sq. ft.
Surface Area @ Elevation 321.5 (bottom) = 1000 sq. ft.
Volume Provided = $1000 \times 223.0 \times 1.0 = 2,230$ CU.FT.

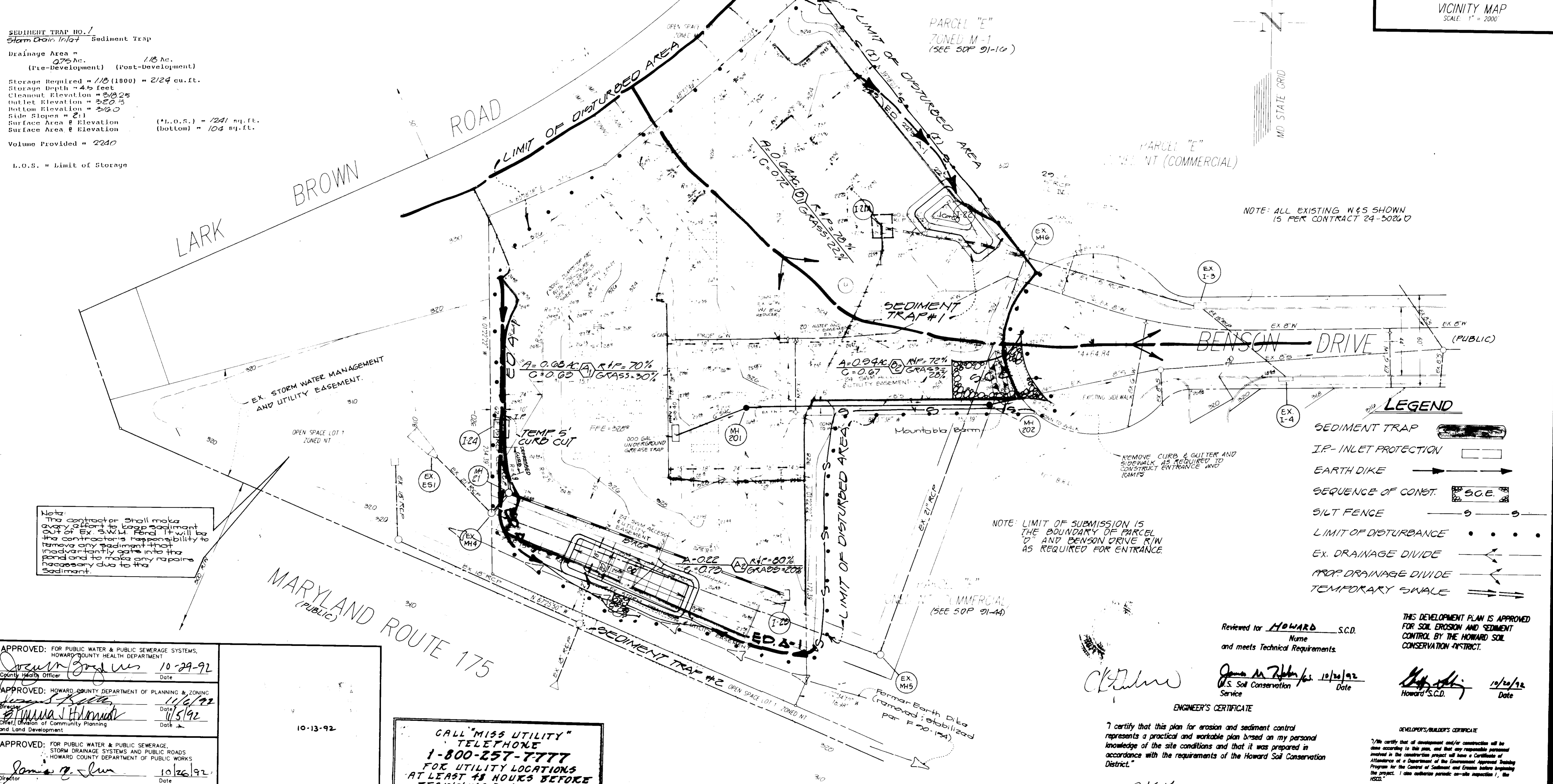
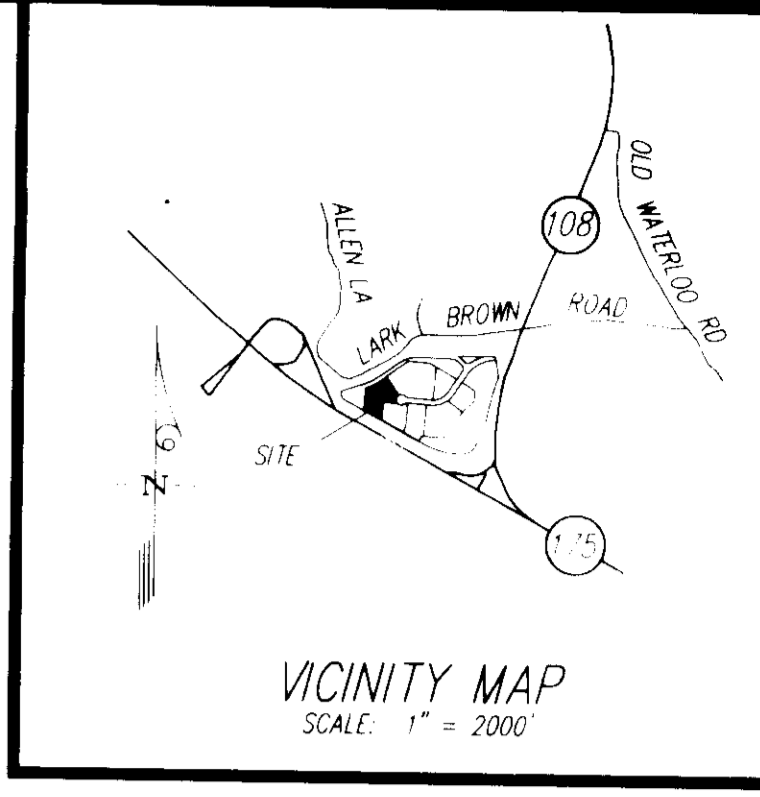
*L.O.S. = Limit of Storage

THIS REVISED PLAN (SDP 91-45R) SUPERCEDES THAT PREVIOUSLY APPROVED UNDER SDP 91-45

SEDIMENT TRAP NO. 1
Storm Drain Inlet Sediment Trap
Drainage Area =
0.75 Ac. (Pre-Development) 1.18 Ac. (Post-Development)

Storage Required (1800) = 2124 cu. ft.
Storage Depth = 4.5 feet
Cleanout Elevation = 320.25
Outlet Elevation = 320.0
Bottom Elevation = 319.0
Side Slopes = 2:1
Surface Area @ Elevation 320.0 (*L.O.S.) = 1241 sq. ft.
Surface Area @ Elevation (bottom) = 104 sq. ft.
Volume Provided = 2240

L.O.S. = Limit of Storage



Note: The contractor shall make every effort to keep sediment out of Ex. SW.14. Pond. It will be the contractor's responsibility to remove any sediment that inadvertently gets into the pond and to make any repairs necessary due to the sediment.

NOTE: ALL EXISTING W&S SHOWN IS PER CONTRACT 24-5026.0

LEGEND

SEDIMENT TRAP

I.P. - INLET PROTECTION

EARTH DIKE

SEQUENCE OF CONST.

SILT FENCE

LIMIT OF DISTURBANCE

EX. DRAINAGE DIVIDE

PROP. DRAINAGE DIVIDE

TEMPORARY SWALE

Reviewed for HOWARD S.C.D. Name and meets Technical Requirements.

James M. Zuber /s/ 10/26/92 Date
U.S. Soil Conservation Service

THIS DEVELOPMENT PLAN IS APPROVED FOR SOIL EROSION AND SEDIMENT CONTROL BY THE HOWARD SOIL CONSERVATION DISTRICT.

Howard S.C.D. /s/ 10/26/92 Date

ENGINEER'S CERTIFICATE

I certify that this plan for erosion and sediment control represents a practical and workable plan based on my personal knowledge of the site conditions and that it was prepared in accordance with the requirements of the Howard Soil Conservation District.

Ch. Zuber /s/ 10-16-92 Date

DEVELOPER/BUILDER'S CERTIFICATE

I/We certify that all development and/or construction will be done according to this plan, and that any responsible personnel involved in the construction project will have a Certificate of Attendance at a Department of the Environment Approval Training Program for the Control of Sediment and Erosion before beginning the project. I also authorize periodic on-site inspection(s) by the DSD.

Howard S.C.D. /s/ 10-16-92 Date

APPROVED: FOR PUBLIC WATER & PUBLIC SEWERAGE SYSTEMS, HOWARD COUNTY HEALTH DEPARTMENT
Joseph J. Jones /s/ 10-29-92 Date
County Health Officer

APPROVED: HOWARD COUNTY DEPARTMENT OF PLANNING & ZONING
James M. Zuber /s/ 11/6/92 Date
Director
Stimulus J. Howard /s/ 11/5/92 Date
Chief, Division of Community Planning and Land Development

APPROVED: FOR PUBLIC WATER & PUBLIC SEWERAGE, STORM DRAINAGE SYSTEMS AND PUBLIC ROADS, HOWARD COUNTY DEPARTMENT OF PUBLIC WORKS
James M. Zuber /s/ 10/26/92 Date
Director
Stimulus J. Howard /s/ 10-24-92 Date
Chief, Bureau of Engineering and Construction

CALL "MISS UTILITY" TELEPHONE 1-800-257-7777 FOR UTILITY LOCATIONS AT LEAST 48 HOURS BEFORE BEGINNING CONSTRUCTION.

THIS SHEET IS FOR SEDIMENT CONTROL & DRAINAGE INFORMATION ONLY.

GLW GUTSCHICK LITTLE & WEBER, P.A.
ENGINEERS, PLANNERS, SURVEYORS
3909 NATIONAL DRIVE - SUITE 250 - BURTONSVILLE OFFICE PARK - BURTONSVILLE, MARYLAND 20866
TEL: (301) 421-4024 METRO: (301) 989-2524 FAX: (301) 421-4186 DES. SCC DRN. SAC/CAD CHK. CRG

DATE	REVISION	BY	APPR.
10-15-92	REVISED DRAINAGE DIVIDES	ED	—
10-16-92	REVISED DRAINAGE DIVIDES ADDED SD PER TENANT	ED	—

PREPARED FOR:
THE HOWARD RESEARCH & DEVELOPMENT CORPORATION
THE ROUSE BUILDING
10275 LITTLE PATUXENT PARKWAY
COLUMBIA, MARYLAND 21044
(301) 992-6000

SEDIMENT CONTROL PLAN & DRAINAGE AREA MAP
BENSON BUSINESS CENTER
SECTION "1" - PARCEL "D"
HOWARD COUNTY, MARYLAND
6th ELECTION DISTRICT

SCALE 1" = 30'	ZONING NT/M-1	G. L. W. FILE NO. 89-035
DATE NOV. 1990	TAX MAP NO. 37	SHEET 3 OF 6

SDP 91-45R

Method of Temporary Diversion

- Construction of a sediment trap or basin below a permanent storm drain outfall: Temporarily divert storm flow into the basin or trap constructed below permanent outfall channel.
- In-line diversion of storm drain at an inlet or manhole: Achieved by installing a pipe stub in the side of a manhole or inlet and temporary blocking the permanent outfall pipe from that structure. A temporary outfall ditch or pipe may be used to convey storm flow from the stub to a sediment trap or basin. This method may be used just above a permanent outfall or prior to connecting into an existing storm drain system.
- Delay completion of the permanent storm drain outfall and temporarily divert storm flow into a sediment basin or trap: Earth dike, swale or designed diversion is used, depending on the drainage area, to direct flow into a sediment basin or trap. The basin or trap should be constructed to one side of the proposed permanent storm drain location whenever possible.
- Installation of a stormwater management basin early in the construction sequence: Install temporary structures to allow use as a sediment basin. Since these structures are designed to receive storm drain outfalls, diversion should not be necessary.

SEDIMENT CONTROL NOTES

A minimum of 24 hours notice must be given to the Howard County Office of Inspection and Permits prior to the start of any construction. (992-2437)

All vegetative and structural practices are to be installed according to the provisions of this plan and are to be in performance with the 1983 MARYLAND STANDARD AND SPECIFICATIONS FOR SOIL EROSION AND SEDIMENT CONTROL.

Following initial site disturbance or reduction, permanent or temporary stabilization shall be completed within 30 calendar days for all perimeter sediment control structures, dikes and perimeter slopes and all slopes greater than 3%, or 14 days for all other disturbed or graded areas on the project site.

All sediment traps, basins, flows must be fenced and warning signs posted around their perimeter in accordance with Vol. 1, Chapter 24 of the HOWARD COUNTY TECHNICAL MANUAL, "Traffic Signs".

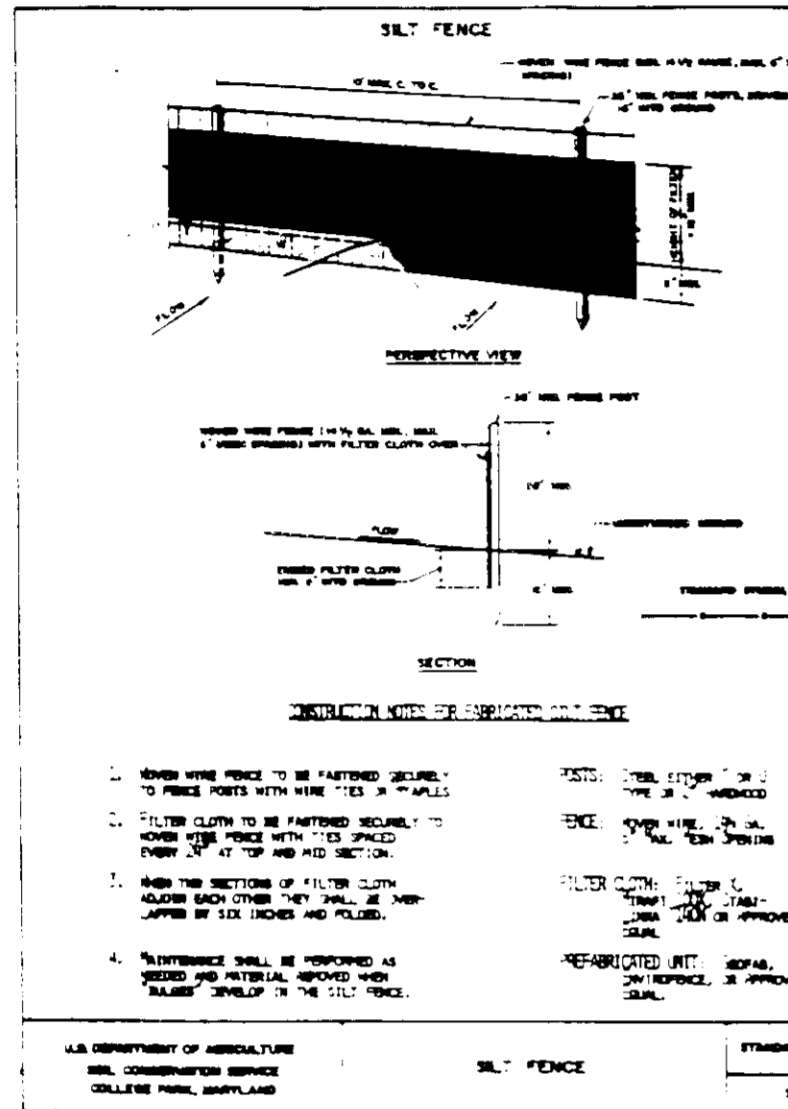
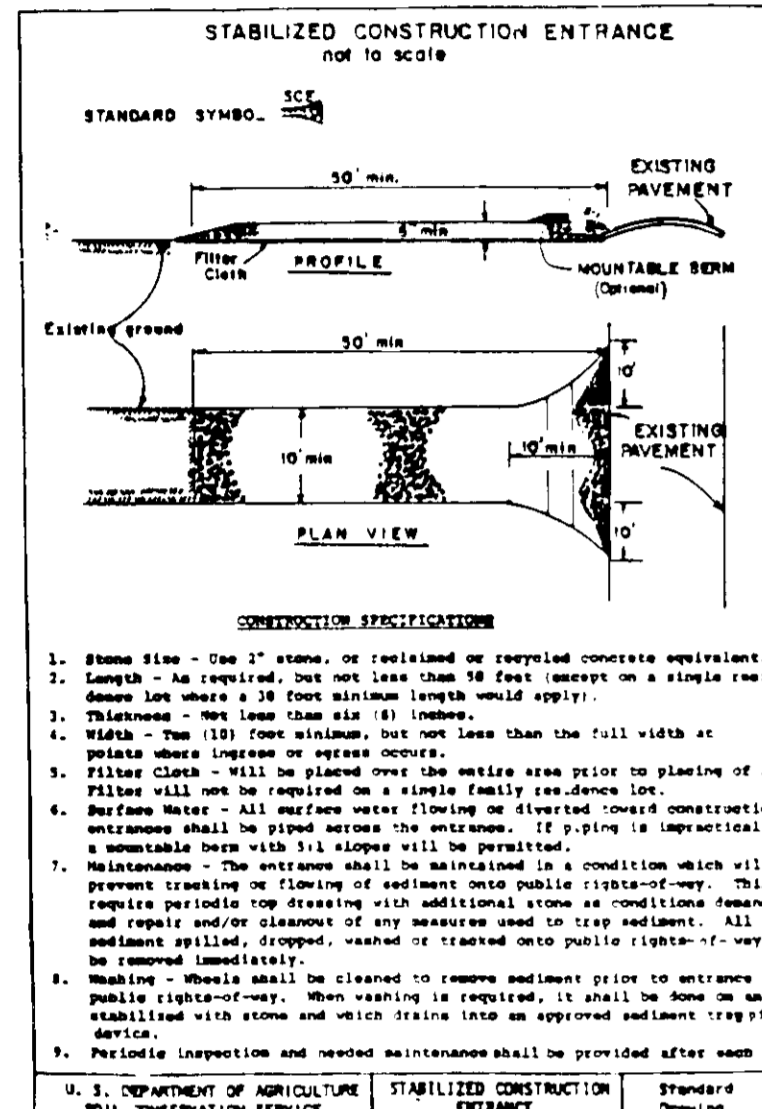
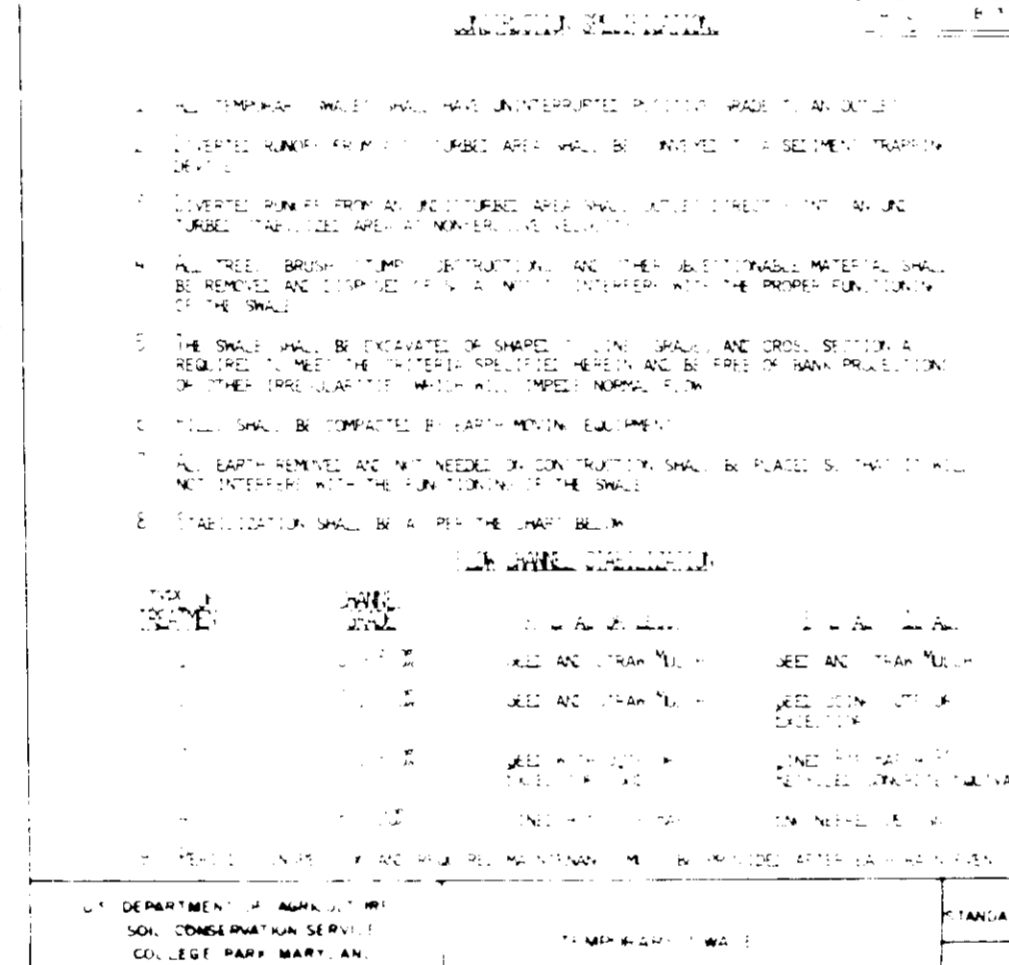
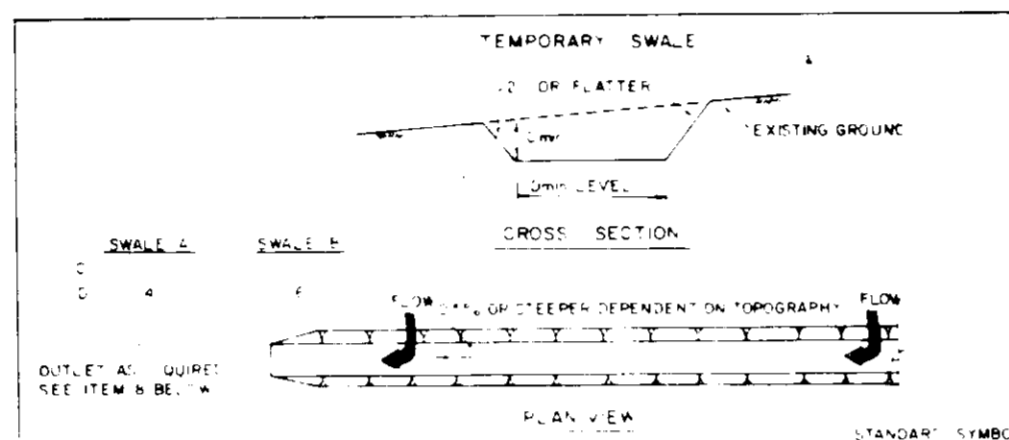
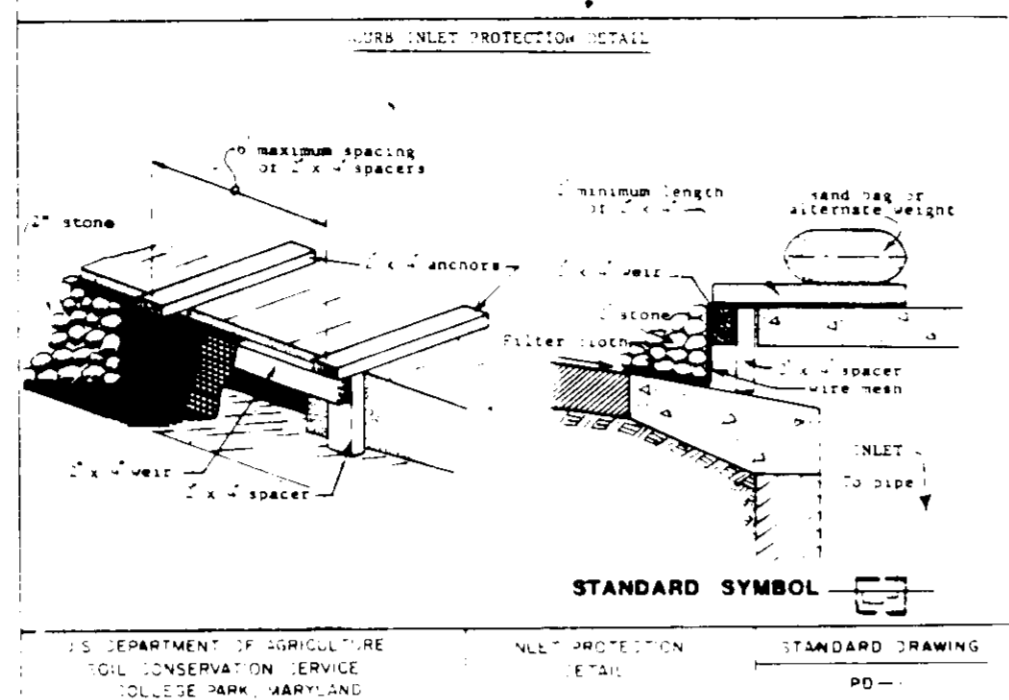
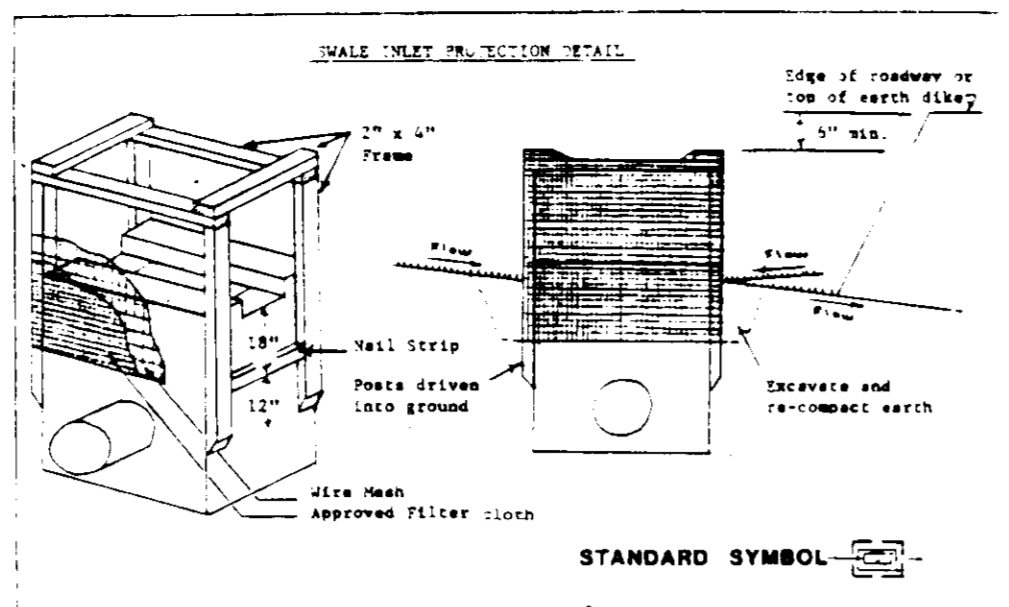
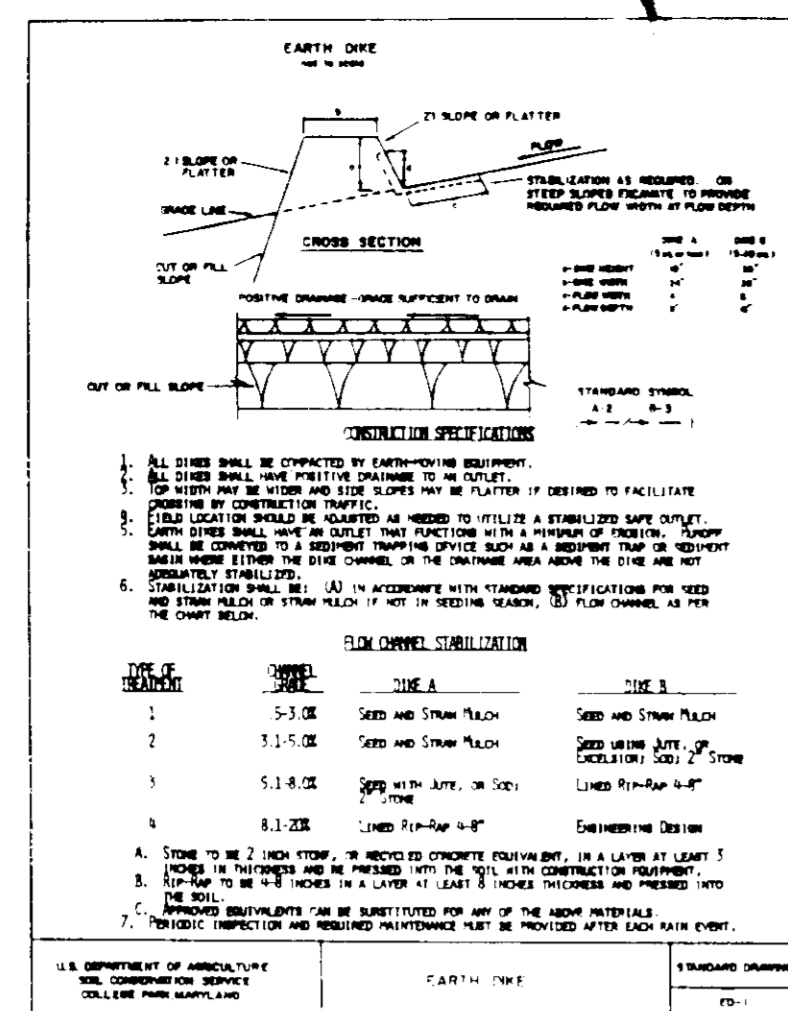
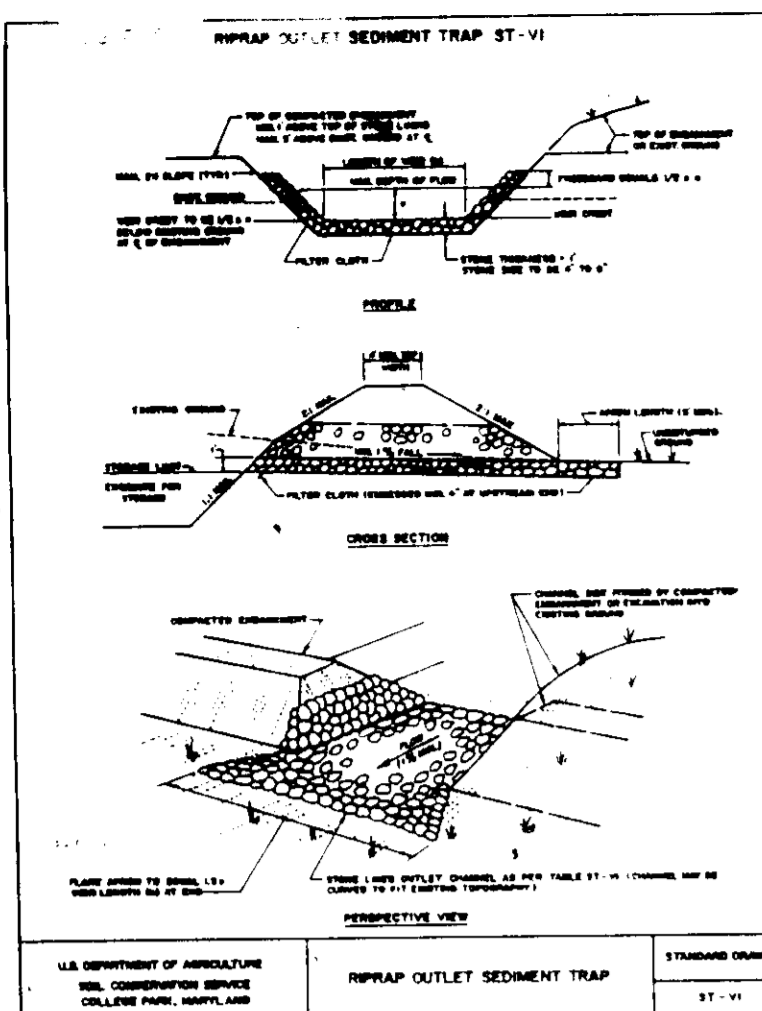
All disturbed areas must be stabilized within the time period specified above in accordance with the 1983 MARYLAND STANDARD AND SPECIFICATIONS FOR SOIL EROSION AND SEDIMENT CONTROL. The permittee shall install and maintain erosion control structures, dikes and perimeter slopes and all slopes greater than 3%, or 14 days for all other disturbed or graded areas on the project site.

When the areas contributing sediment to the system have been stabilized, procedures can be taken to restore the system to its planned use. The following removal and restoration procedure is recommended:

When the areas contributing sediment to the system have been stabilized, procedures can be taken to restore the system to its planned use. The following removal and restoration procedure is recommended:

- Flush the storm drain system to remove any accumulated sediment.
- Remove the sediment control devices, such as traps, basins, dikes, swales, etc.
- For sites where an inlet was modified, brick shut the temporary pipe stub and open the permanent outfall pipe.
- Establish permanent stabilized natural channel as noted on the plans.
- Restore the area to grades shown on the plan and stabilize with vegetative measures.
- For basins that will be converted to stormwater management, remove the accumulated sediment, open the flow orifice, and seed as stipulated in the permanent vegetation plan.

Completion and Disposition



- Obtain grading permits.
- Install a stabilized construction entrance.
- Install a stabilized construction entrance.
- Install a stabilized construction entrance.
- Install a stabilized construction entrance.
- Install a stabilized construction entrance.
- Stabilize remaining areas with grass, seed and mulch.
- Remove sediment controls only when areas served by these measures are stabilized and permission is granted by the Sediment Control Inspector.
- Install remaining curb and gutter base paving. Grass seed and mulch trap areas.
- Install surface course paving.

APPROVED: FOR PUBLIC WATER & PUBLIC SEWERAGE SYSTEMS
HOWARD COUNTY HEALTH DEPARTMENT
County Health Officer
Date: 10-29-92

APPROVED: HOWARD COUNTY DEPARTMENT OF PLANNING & ZONING
Director
Date: 11/6/92

APPROVED: FOR PUBLIC WATER & PUBLIC SEWERAGE
STORM DRAINAGE SYSTEMS AND PUBLIC ROADS
HOWARD COUNTY DEPARTMENT OF PUBLIC WORKS
Director
Date: 10-26-92

Signature of Developer/Builder
Date: 10-16-92

Signature of Engineer
Date: 10-16-92

DEVELOPER'S/BUILDER'S CERTIFICATE
I/We certify that all development and/or construction will be done according to this plan, and that any responsible personnel involved in the construction project will have a Certificate of Approval from a Department of the Environment Approved Training Program for the Control of Sediment and Erosion before beginning the project. I also authorize periodic on-site inspection by the HOSCD.

Signature of Developer/Builder
Date: 10-16-92

Signature of Engineer
Date: 10-16-92

Reviewed for HOWARD S.C.D.
Name
and meets Technical Requirements.

Signature of Engineer
Date: 10-16-92

ENGINEER'S CERTIFICATE
I certify that this plan for erosion and sediment control represents a practical and workable plan based on my personal knowledge of the site conditions and that it was prepared in accordance with the requirements of the Howard Soil Conservation District.

Signature of Engineer
Date: 10-16-92

GLW GUTSCHICK LITTLE & WEBER, P.A.
ENGINEERS, PLANNERS, SURVEYORS
3909 NATIONAL DRIVE SUITE 250 BURTONSVILLE OFFICE PARK BURTNSVILLE, MD 21036
TELEPHONE (301) 421-4024

10-10-92 REV BOP APPROVAL BY HOWARD COUNTY PLANNING BOARD
DATE REVISION BY APPR

SEDIMENT CONTROL DETAIL SHEET
BENSON BUSINESS CENTER
SECTION "A" - PARCEL "D"
HOWARD COUNTY, MARYLAND

SCALE: NT/M-1
DATE: NOV. 1992
TAX MAP NO: 37
SHEET: 4 of 6
FILE NO: 89-035

PERMANENT SEEDING NOTES

Apply to graded or cleared area not subject to immediate further disturbance where a permanent long-lived vegetative cover is needed.

Seeded Preparation: Loosen upper three inches of soil by raking, discing or other acceptable means before seeding (unless previously loosened).

Soil Amendments: In lieu of soil test recommendations, use one of the following schedules

- Preferred - Apply 2 tons per acre dolomitic limestone (92 lbs/1000 square feet) and 600 lbs per acre 10-10-10 fertilizer (14 lbs/1000 sq ft) before seeding. Harrow or disc into upper three inches of soil. At time of seeding, apply 400 lbs per acre 30-0-0 ureaform fertilizer (9 lbs/1000 sq ft).
- Acceptable - Apply 2 tons per acre dolomitic limestone (92 lbs/1000 sq ft) and 1000 lbs per acre 10-10-10 fertilizer (23 lbs/1000 sq ft) before seeding. Harrow or disc into upper three inches of soil.

Seeding: For the periods March 1 thru April 30, and August 1 thru October 15, seed with 60 lbs per acre (14 lbs/1000 sq ft) of Kentucky 31 Tall Fescue. For the period May 1 thru July 31, seed with 60 lbs Kentucky 31 Tall Fescue per acre and 2 lbs per acre of weeping lovegrass. During the period of October 16 thru February 28, protect site by applying 1 1/2 tons per acre of well anchored straw mulch and seed as soon as possible in the spring. Option 2) the seed mixture shall be 1/2 lb per acre Kentucky 31 Tall Fescue and 1/2 lb per acre well anchored straw.

Mulching: Apply 1 1/2 to 2 tons per acre (70 to 90 lbs/1000 sq ft) of unrotted small grain straw immediately after seeding. Anchor mulch immediately after application using mulch anchoring tool or 218 gal per acre (5 gal/1000 sq ft) of emulsified asphalt on flat areas. On slopes, 8 ft or higher, use 348 gal per acre (8 gal/1000 sq ft) for anchoring.

Maintenance: Inspect all seeded areas and make needed repairs, replacements and reseedings.

Soil Amendments: Apply 600 lbs per acre 10-10-10 fertilizer (14 lbs/1000 sq ft).

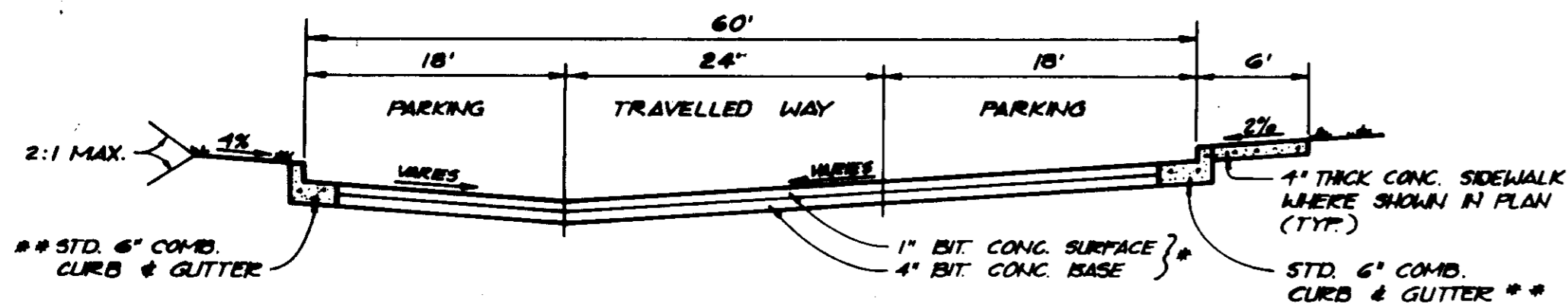
Seeding: For periods March 1 thru April 30 and from August 15 thru November 15, seed with 2-1/2 bushel per acre of annual rye (3.2 lbs/1000 sq ft). For the period May 1 thru August 14, seed with 3 lbs per acre of weeping lovegrass (.07 lbs/1000 sq ft). For the period November 16 thru February 28, protect site by applying 2 tons per acre of well anchored straw mulch and seed as soon as possible in the spring, or use sod.

Mulching: Apply 1-1/2 to 2 tons per acre (70 to 90 lbs/1000 sq ft) of unrotted small grain straw immediately after seeding. Anchor mulch immediately after application using mulch anchoring tool or 218 gal per acre (5 gal/1000 sq ft) of emulsified asphalt on flat areas. On slopes, 8 ft or higher, use 348 gal per acre (8 gal/1000 sq ft) for anchoring.

Refer to the 1983 MARYLAND STANDARD AND SPECIFICATIONS FOR SOIL EROSION AND SEDIMENT CONTROL for rate and methods not covered.

THIS REVISED PLAN (BOP 91-45R) SUPERSEDES PREVIOUSLY APPROVED UNDER BOP 91-45

SDP 91-45R



**TYPICAL SECTION
PRIVATE DRIVE & PARKING**
NO SCALE

SEE ALTERNATE PAVING SECTION P-1 (THIS SHEET)
WHERE FLOW IS AWAY FROM CURB & GUTTER, RUN OF COMB CURB & GUTTER SHALL BE USED.

BITUMINOUS CONC SURFACE	1 1/2"
BITUMINOUS CONC. BASE	4 1/2"
PRIME - 6" CRUSHER RUN BASE COURSE OR 4% DENSE GRADED STABILIZED AGGREGATE BASE COURSE	4 1/2" OR 6"

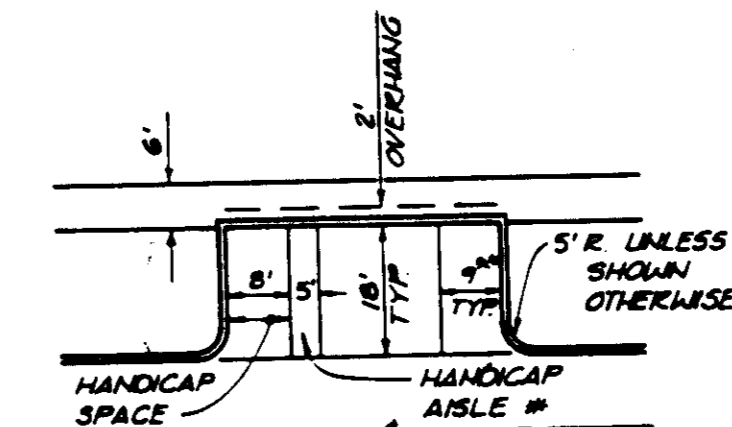
P-3 ALTERNATE PAVING SECTION FOR PUBLIC ROADS
NO SCALE

BITUMINOUS CONC SURFACE	1 1/2"
BITUMINOUS CONC. BASE	1 1/2"
BITUMINOUS CONC. BASE	5"

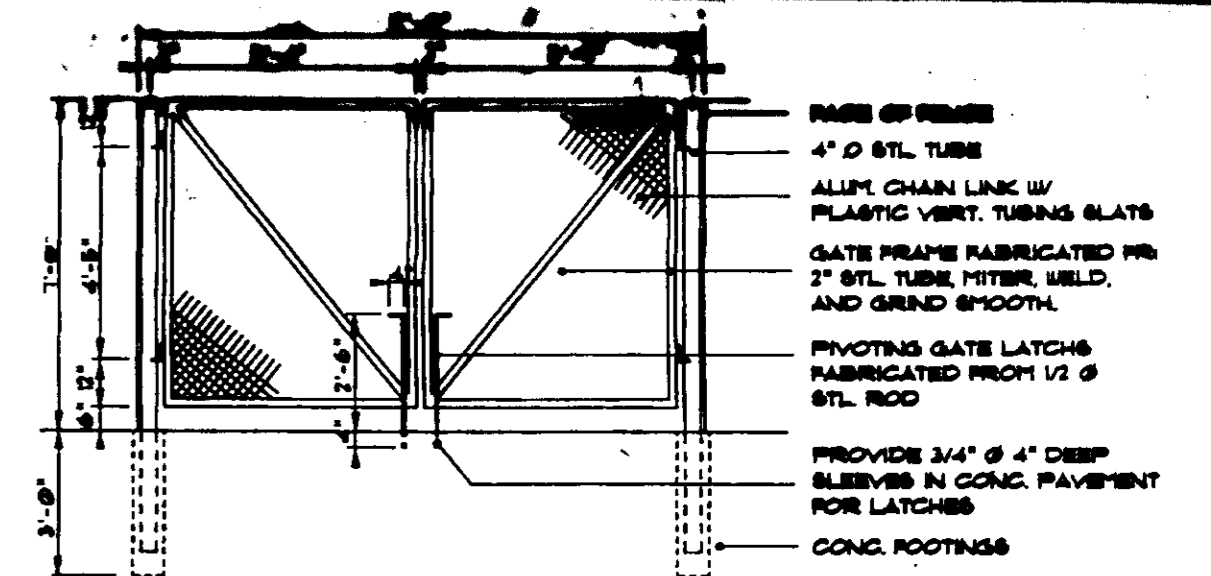
P-3 PAVING SECTION FOR PUBLIC ROADS
NO SCALE

BITUMINOUS CONC SURFACE	1"
BITUMINOUS CONC. BASE	2"
PRIME - 5" CRUSHER RUN BASE COURSE OR 4" DENSE GRADED STABILIZED AGGREGATE BASE COURSE	5" OR 4"

ALTERNATE PAVING SECTION (P-1) FOR PARKING AREAS
NO SCALE

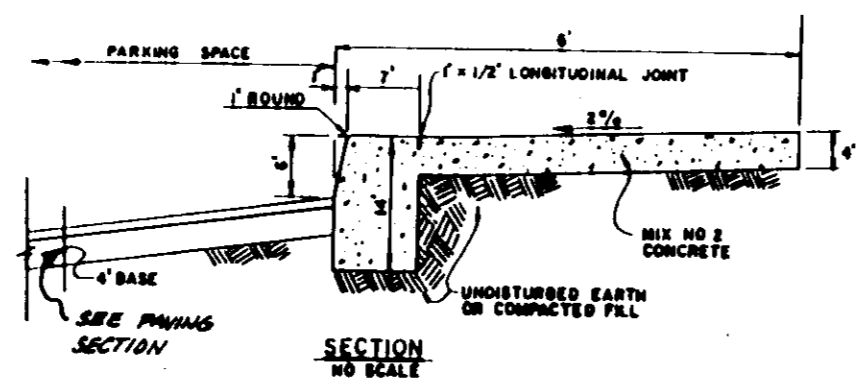


TYPICAL PARKING
NO SCALE

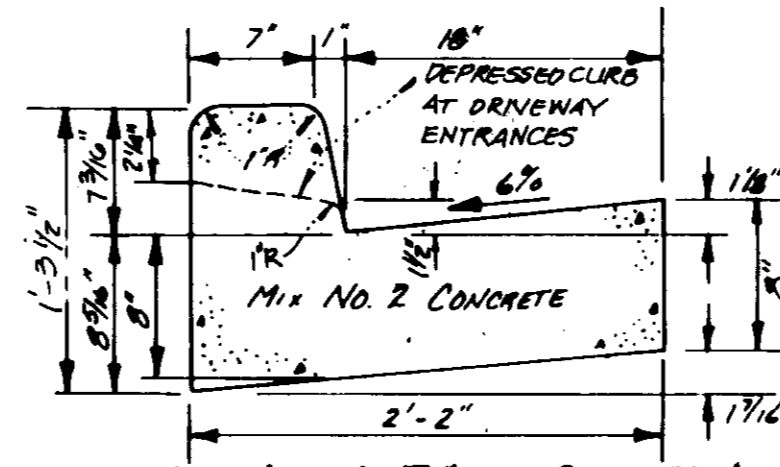


SERVICE COURT GATE ELEV.
SCALE: 3/8\"/>

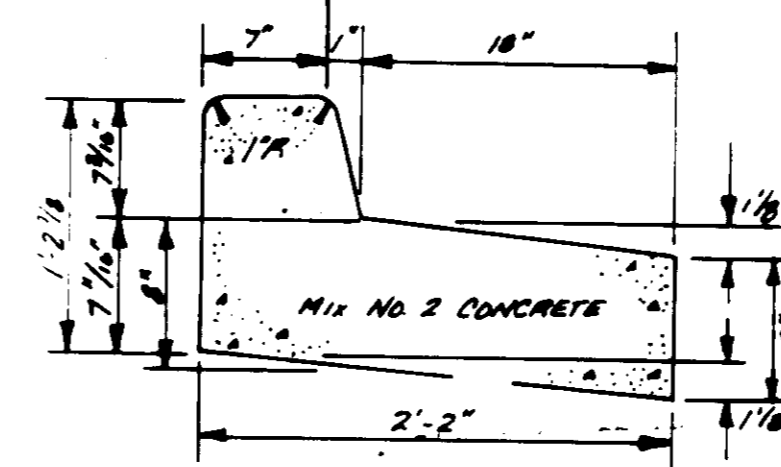
- NOTES:**
- CONDITIONAL JOINT BETWEEN SIDEWALK AND CURB SHALL BE CONTINUOUS AND TO A DEPTH OF 1/4\"/>
 - PROVIDE 1/2\"/>



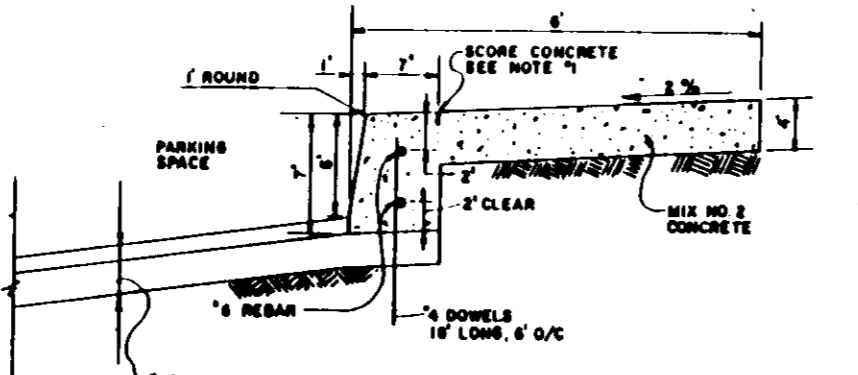
SECTION
NO SCALE



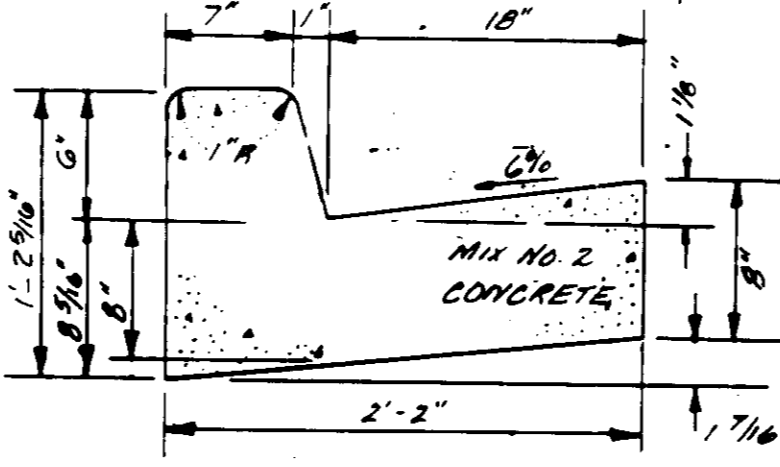
STANDARD 7\"/>



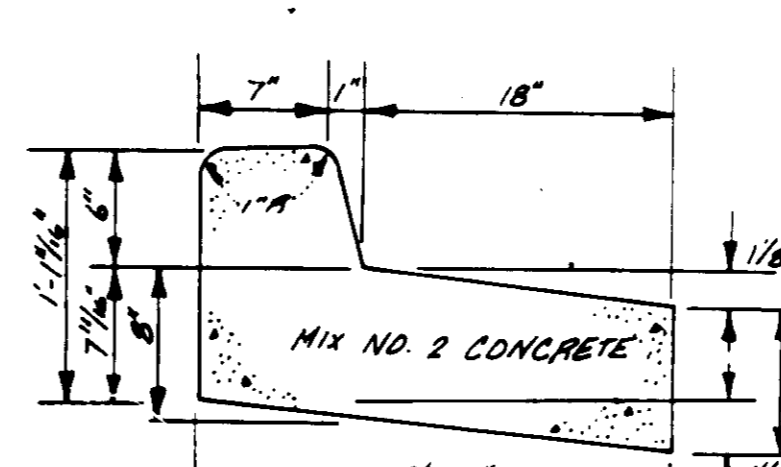
REVERSE 7\"/>



**ALTERNATE SECTION
PRIVATE PAVING MONOLITHIC CURB AND SIDEWALK ALTERNATES**
NO SCALE



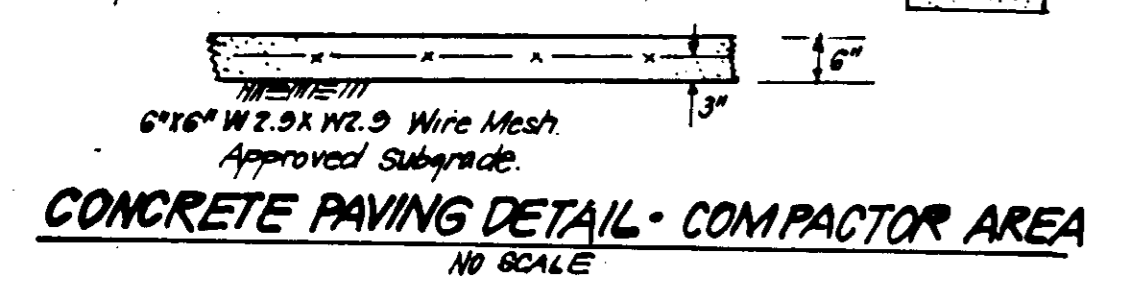
STANDARD 6\"/>



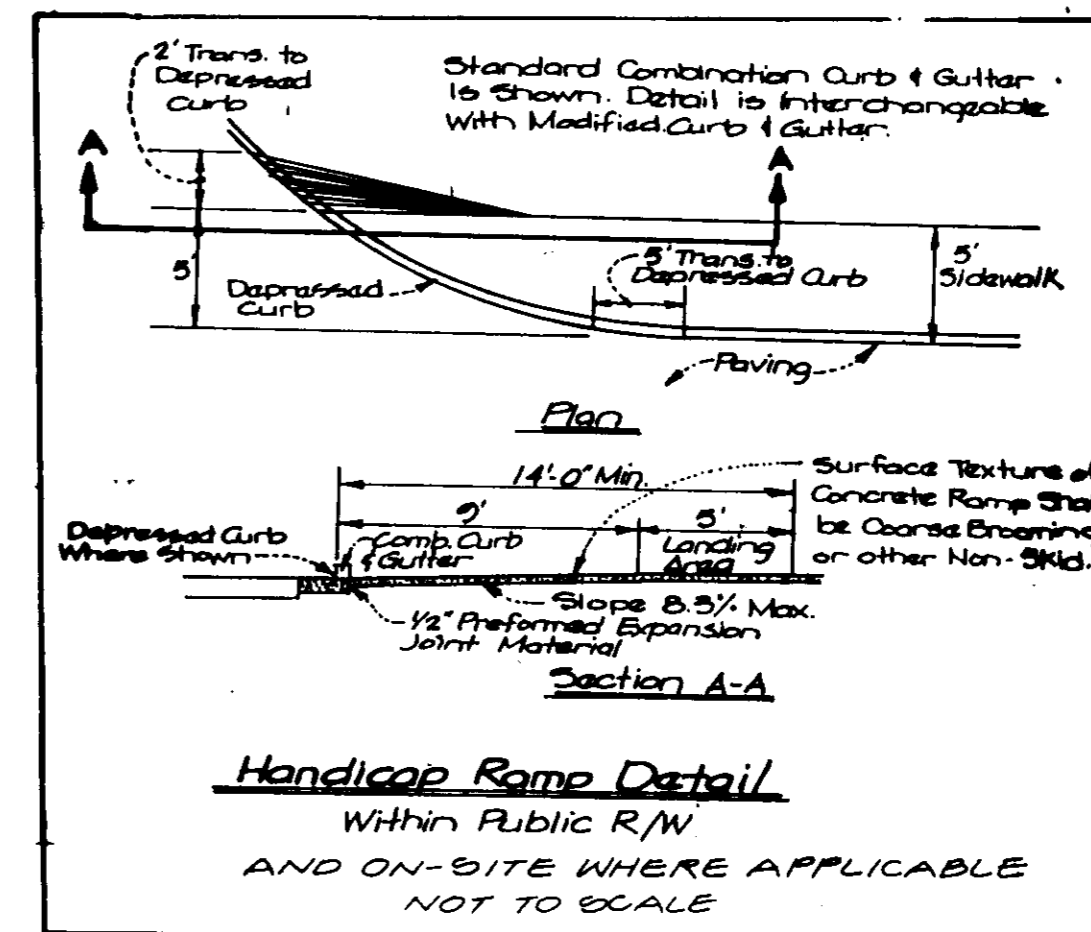
REVERSE 6\"/>

NOTE: AREAS WITHIN THE PUBLIC RIGHT OF WAY SHALL BE PAVED WITH SECTION P-3 OR P-3 ALTERNATE AND 7\"/>

- Notes:**
- Materials and Construction to be in accordance with H.C. Std. & Specs.
 - See plan view for limits of conc. paving, shown thus: [Symbol]



CONCRETE PAVING DETAIL - COMPACTOR AREA
NO SCALE



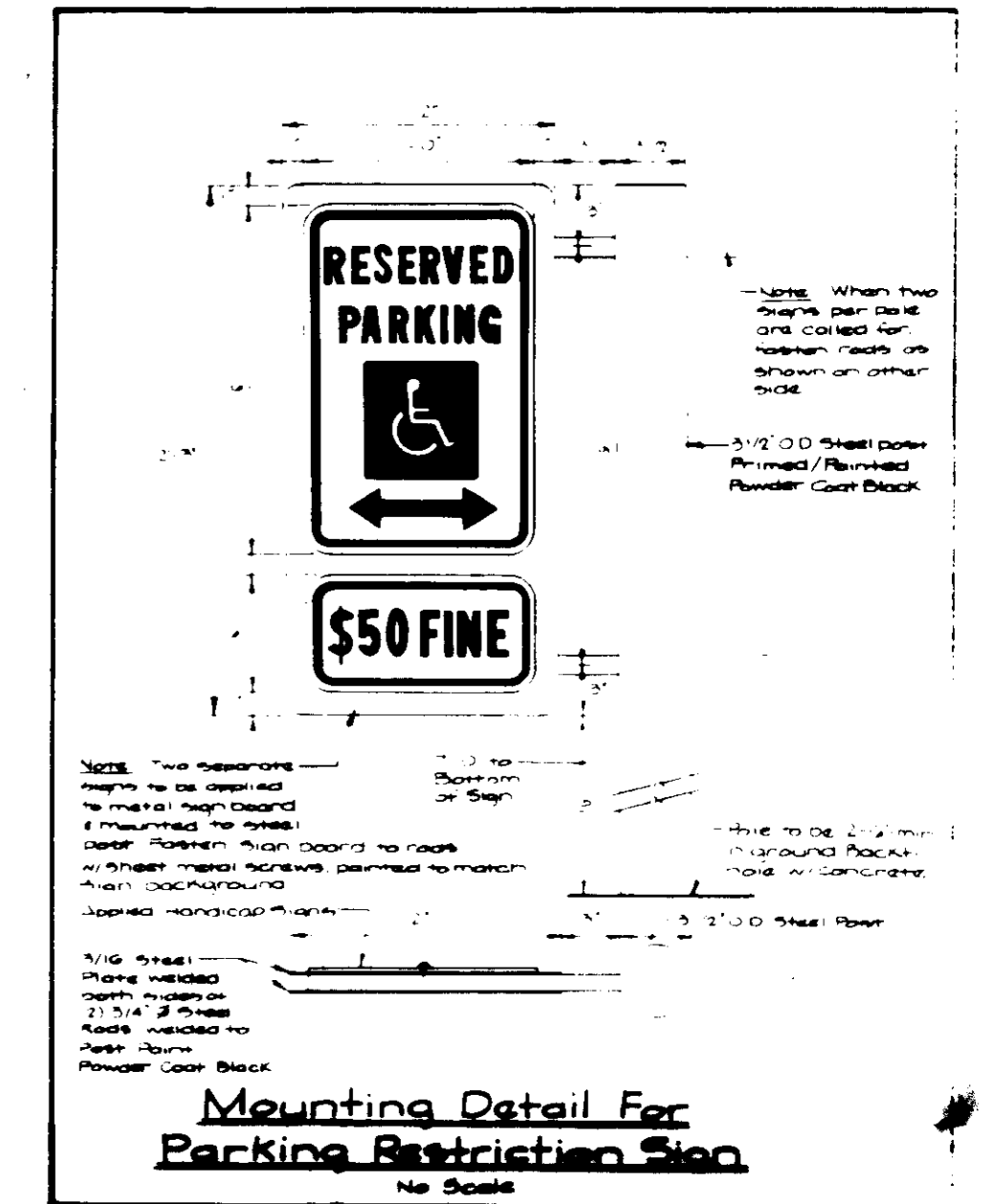
Handicap Ramp Detail
Within Public R/W AND ON-SITE WHERE APPLICABLE
NOT TO SCALE



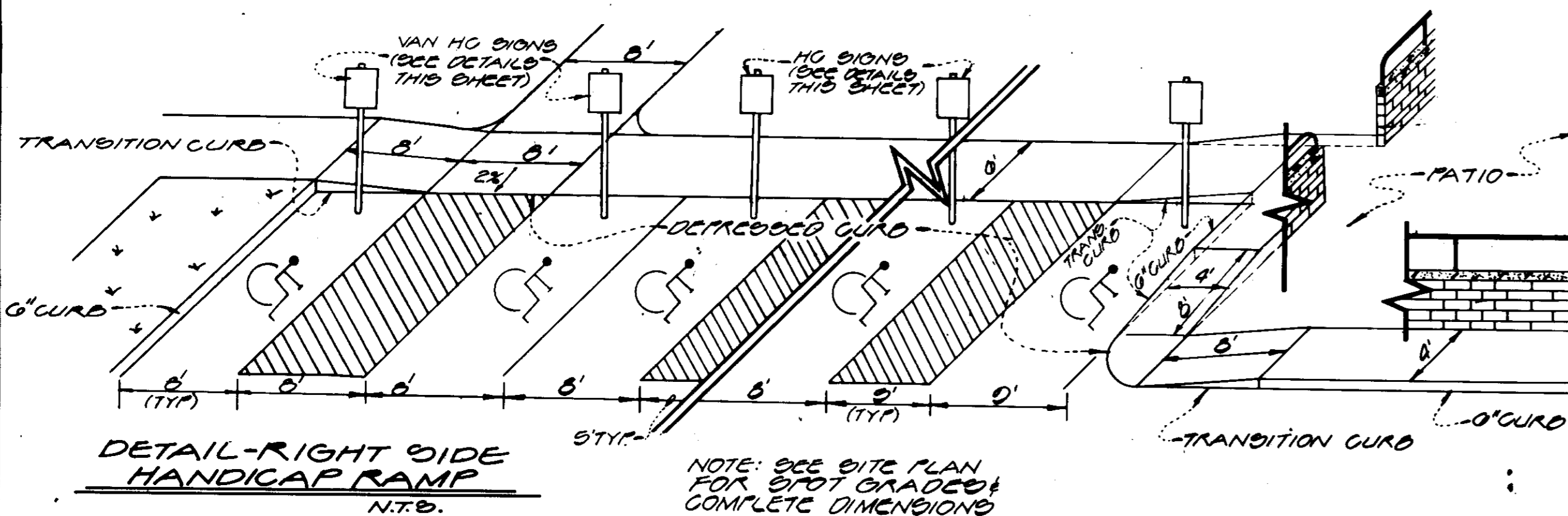
Parking Restriction Sign for Handicapped Parking
No Scale



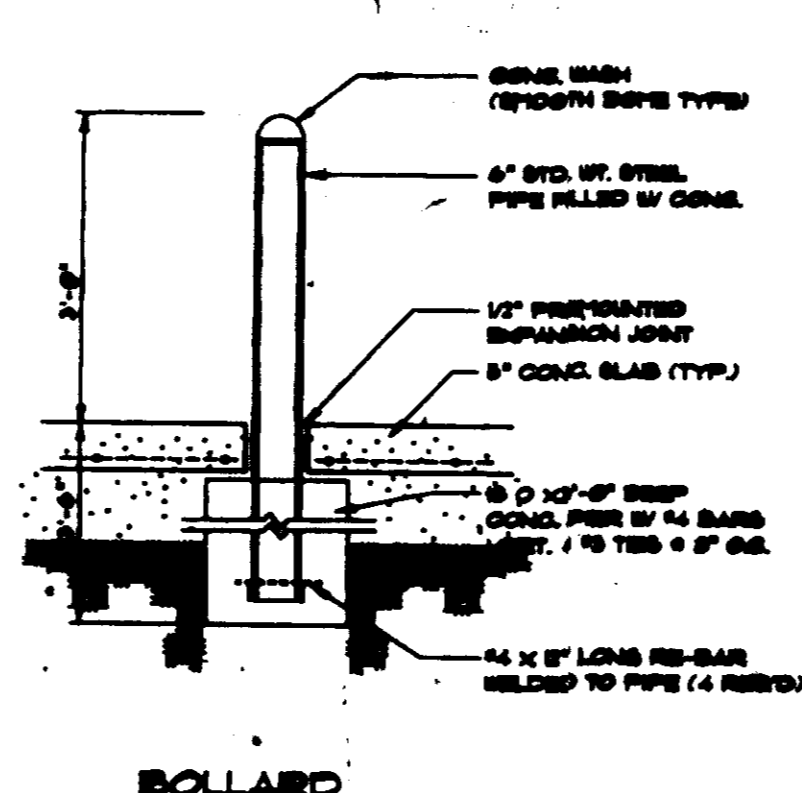
Parking Restriction Sign for Handicapped Parking
No Scale



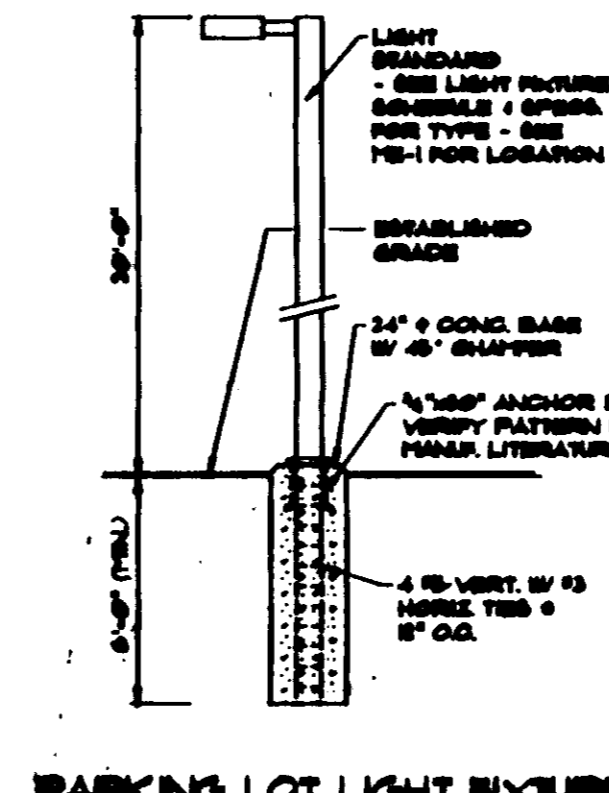
Mounting Detail For Parking Restriction Sign
No Scale



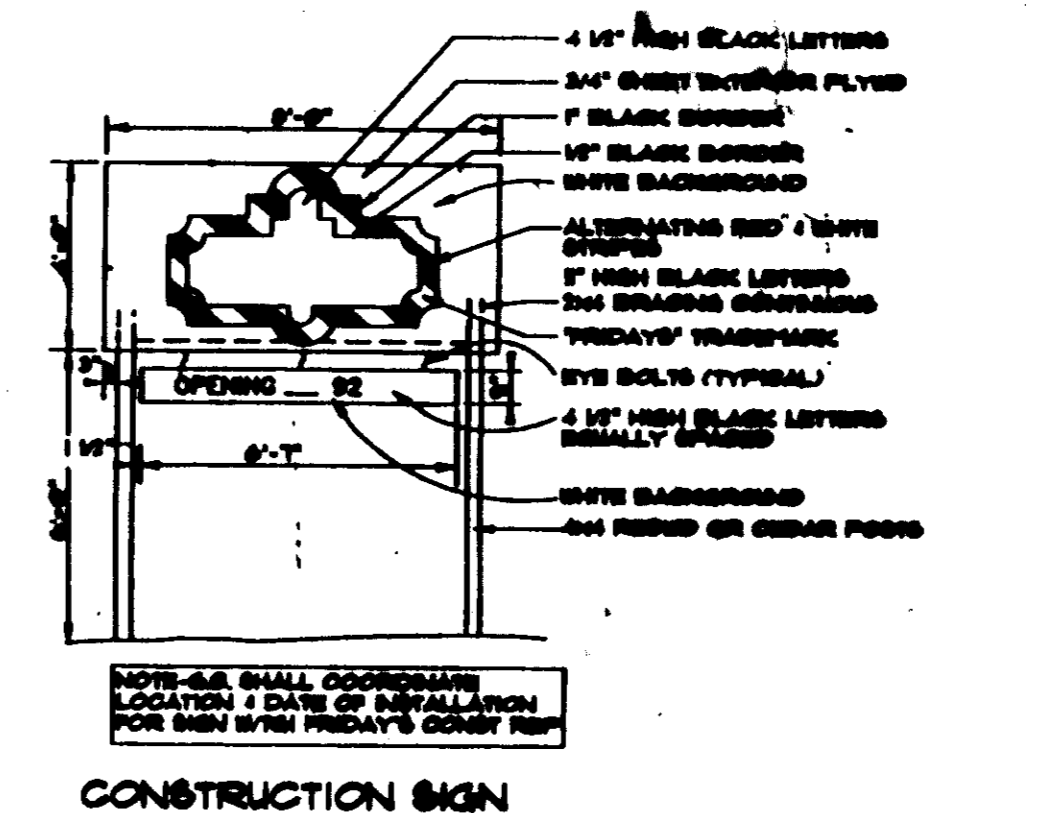
DETAIL - RIGHT SIDE HANDICAP RAMP
N.T.B. NOTE: SEE SITE PLAN FOR SPOT GRADED & COMPLETE DIMENSIONS



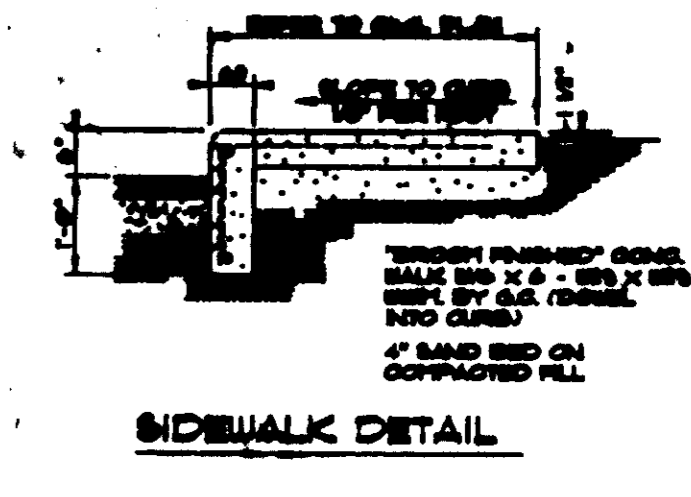
BOLLARD



PARKING LOT LIGHT FIXTURE
SCALE: NONE REFER TO P-1 FOR LOCATIONS



CONSTRUCTION SIGN



SIDEWALK DETAIL

APPROVED: FOR PUBLIC WATER & PUBLIC SEWERAGE SYSTEMS, HOWARD COUNTY HEALTH DEPARTMENT
 County Health Officer: [Signature] Date: 10-29-92
 APPROVED: HOWARD COUNTY DEPARTMENT OF PLANNING & ZONING
 Planning Director: [Signature] Date: 11/6/92
 APPROVED: FOR PUBLIC WATER & PUBLIC SEWERAGE, STORM DRAINAGE SYSTEMS AND PUBLIC ROADS, HOWARD COUNTY DEPARTMENT OF PUBLIC WORKS
 Director: [Signature] Date: 10-26-92
 Chief, Bureau of Engineering: [Signature] M.K. Date: 10-26-92

GLW GUTSCHICK LITTLE & WEBER, P.A.
 ENGINEERS, PLANNERS, SURVEYORS
 3908 NATIONAL DRIVE, SUITE 250, BURTONSVILLE OFFICE PARK, BURTONSVILLE, MD 20866
 TELEPHONE (301) 421-4024

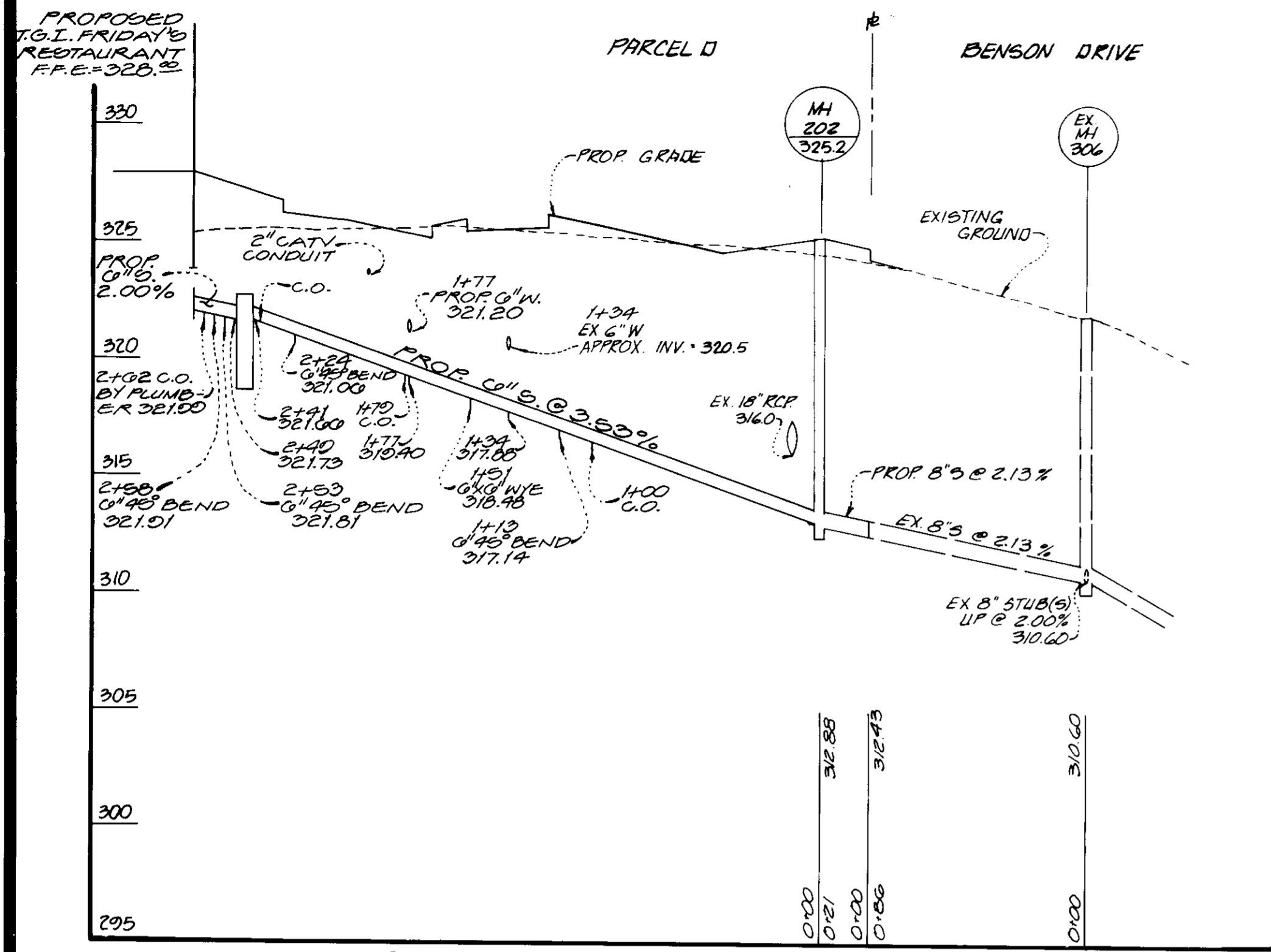
DATE	REVISION	BY	APP'R.
10-12-92	REV. 200\"/>		
10-10-92	ADDED MISC. DETAILS PER TENANT	WST/AB	SEC

PREPARED FOR:
 THE HOWARD RESEARCH & DEVELOPMENT CORPORATION
 THE ROUSE BUILDING
 10275 LITTLE PATENT PARKWAY
 COLUMBIA, MARYLAND 21044
 (301) 992-9000

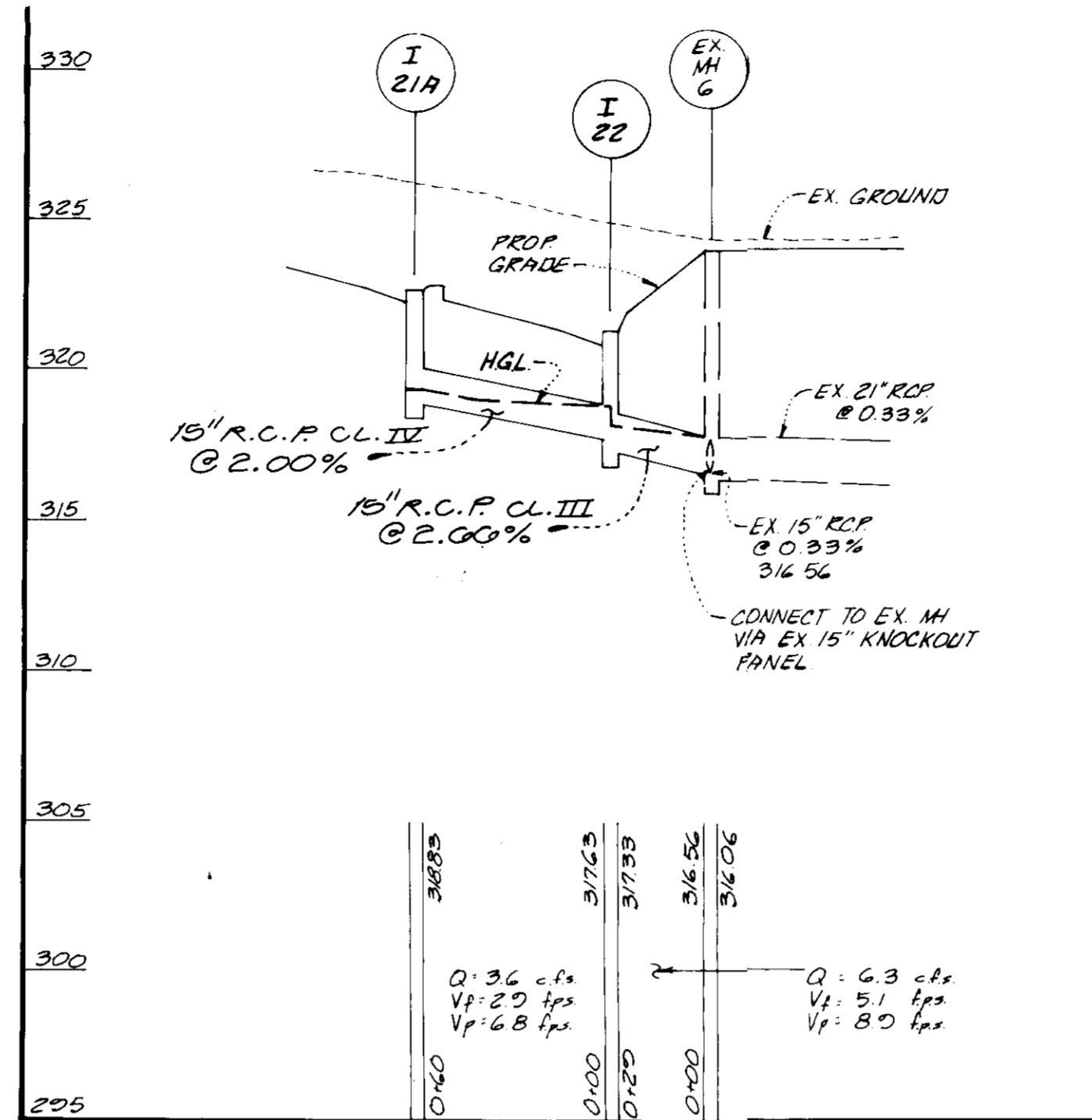
SITE DETAILS
BENSON BUSINESS CENTER
 SECTION "I" - PARCEL "D"
 HOWARD COUNTY, MARYLAND
 6th ELECTION DISTRICT

SCALE	ZONING	GLW FILE NO.
NO SCALE	NT/M-1	89-035
DATE	TAX MAP NO.	SHEET
NOV., 1990	37	5 OF 6

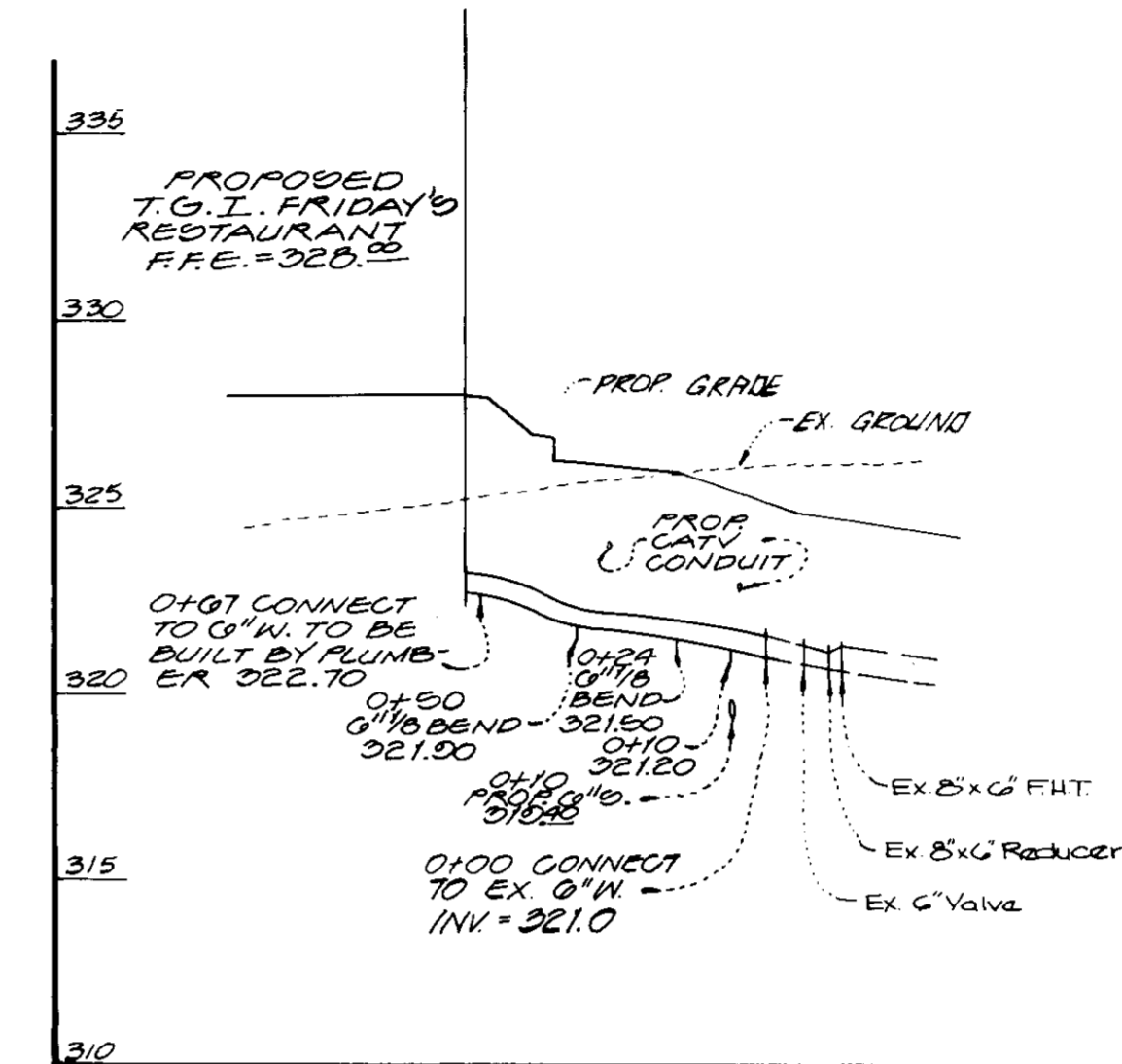
SDP 91-45 K



PARCEL D - SEWER



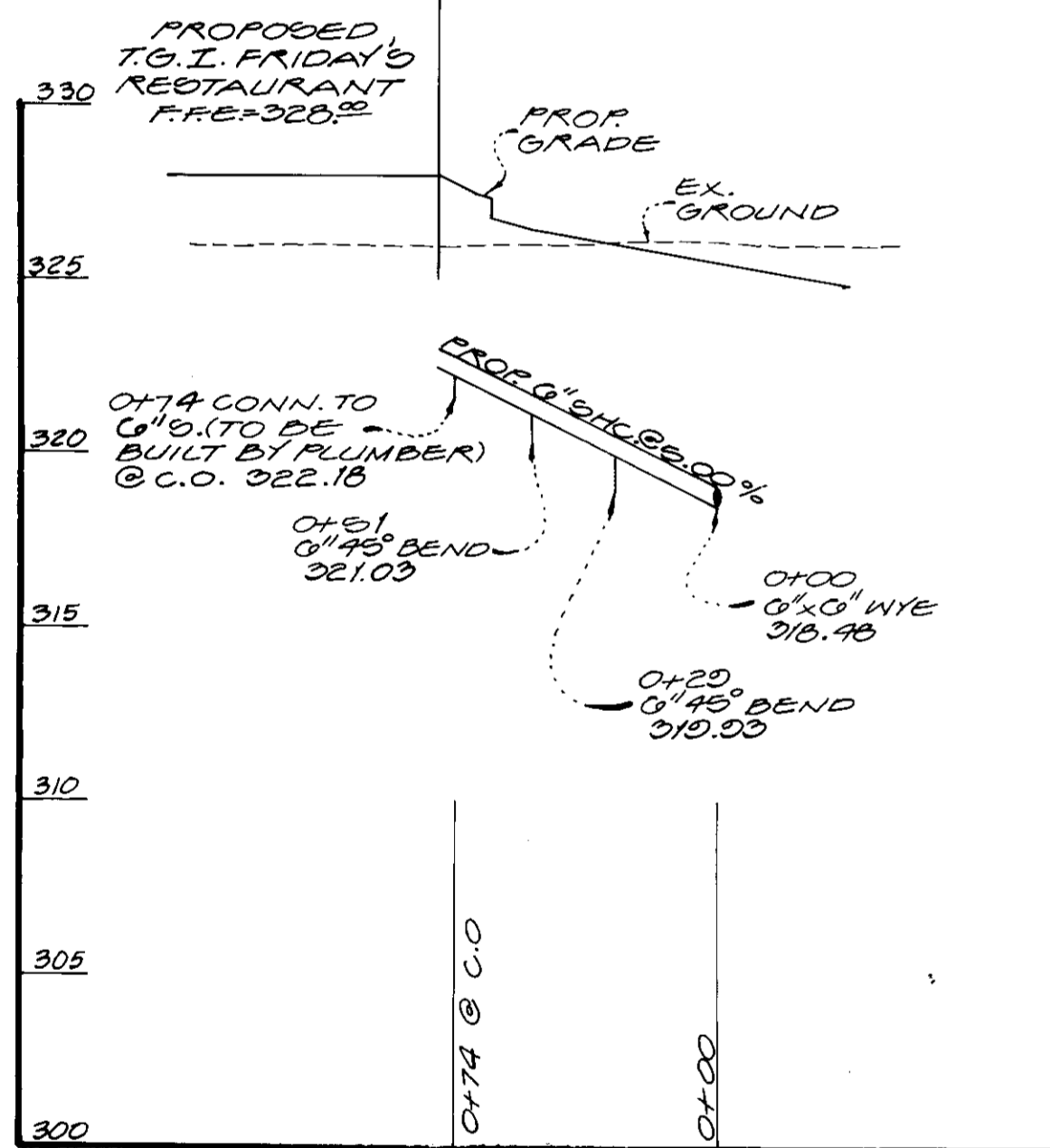
PARCEL D - STORM DRAINS



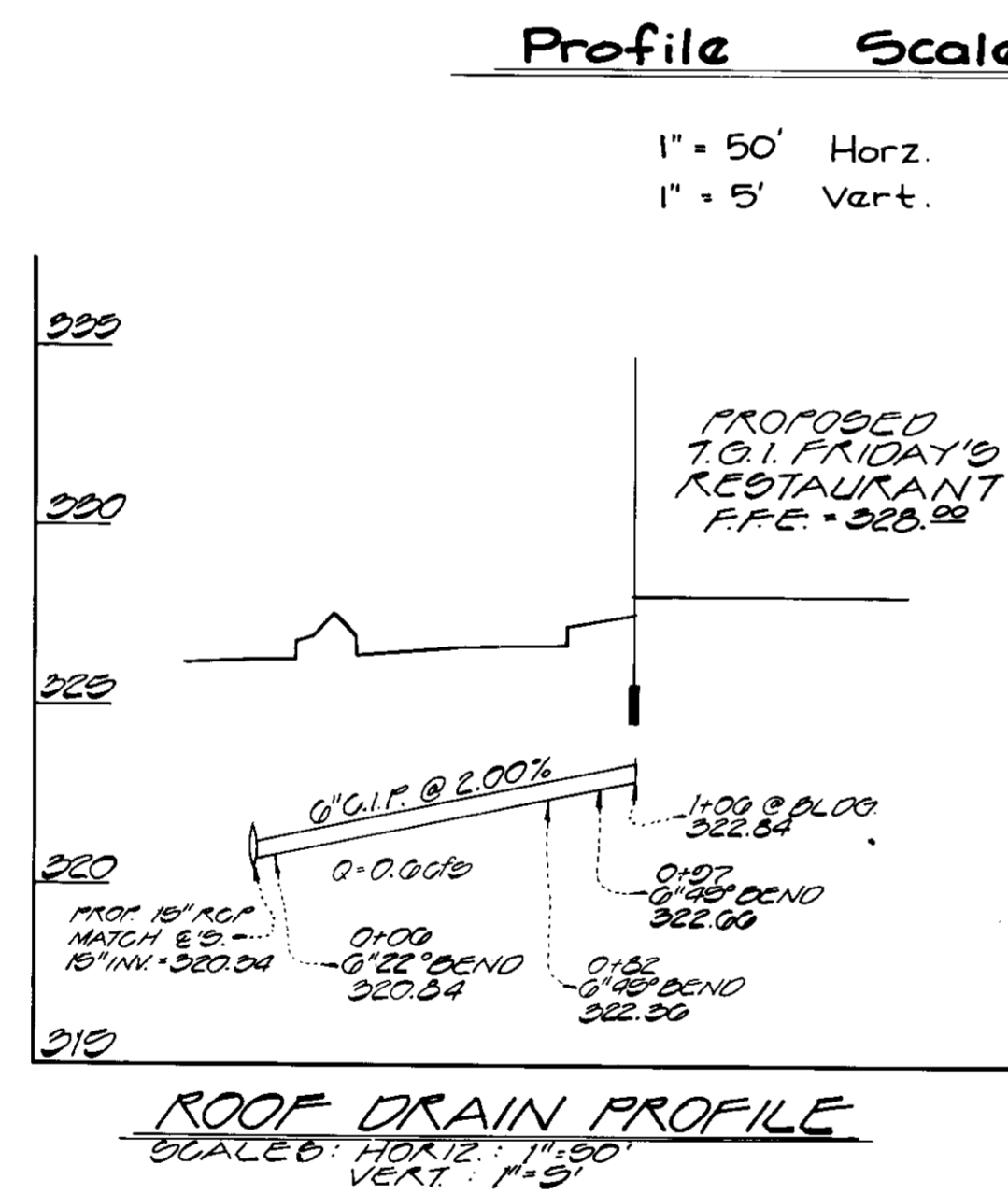
PARCEL D - WATER

STRUCTURE NO.	TYPE	STREET INVS	TOP ELEV.	REMARKS	
MH-21	STD. MANHOLE	317.20	320.4	320.0	G. D. 01
I-21A	A-5 INLET	318.83	322.75	322.75	G. D. 401
I-22	A-5 INLET	317.63	321.30	321.30	G. D. 401
I-23	A-B INLET	321.60	322.74	322.74	G. D. 401
I-24	A-B INLET	318.54	322.21	322.21	G. D. 401

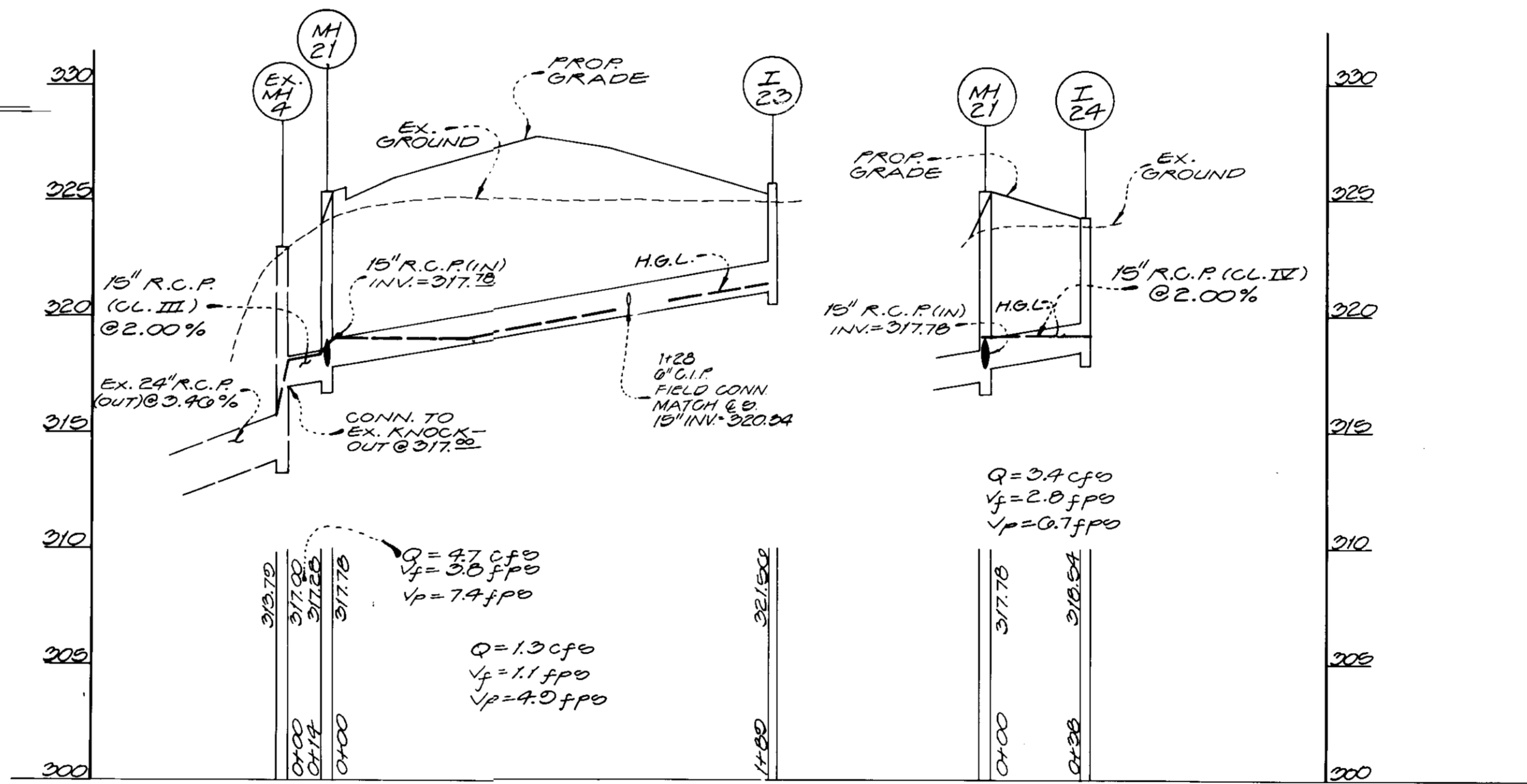
SIZE	DESCRIPTION	LENGTH
15"	RCP CLASS III	421 L.F.
15"	RCP CLASS II	287 L.F.
6"	G.I.P.	100 L.F.



PARCEL D - SEWER



ROOF DRAIN PROFILE
SCALE: HORIZ. 1"=50'
VERT. 1"=5'



PARCEL D - STORM DRAIN

- Water & Sewer Notes
- All construction methods and materials for private water & sewer mains and connections shall follow the current edition of the Howard County Plumbing Code, supplemented by the Howard County Standards, Details & Specifications, where necessary.
 - All sewer mains and connections shall be PVC.
 - All water mains shall be DIP, Class 52.
 - Block all water fittings with concrete.
 - Sewer manholes shall be 4' diameter.
 - Water services are for inside meter settings.
 - Verify location of existing utilities prior to starting construction of utilities shown on this plan.

APPROVED: FOR PUBLIC WATER & PUBLIC SEWERAGE SYSTEMS,
HOWARD COUNTY HEALTH DEPARTMENT
County Health Officer: *[Signature]* Date: 10-29-92

APPROVED: HOWARD COUNTY DEPARTMENT OF PLANNING & ZONING
Director: *[Signature]* Date: 11/6/92

APPROVED: FOR PUBLIC WATER & PUBLIC SEWERAGE
STORM DRAINAGE SYSTEMS AND PUBLIC ROADS
HOWARD COUNTY DEPARTMENT OF PUBLIC WORKS
Director: *[Signature]* Date: 10/26/92

Chief, Bureau of Engineering: *[Signature]* M.E. Date: 10-26-92

10-13-92

[Handwritten Signature]

THIS REVISED PLAN (SDP 91-45R)
SUPERSEDES THAT PREVIOUSLY
APPROVED UNDER SDP 91-45

GLW GUTSCHICK LITTLE & WEBER, P.A.
ENGINEERS, PLANNERS, SURVEYORS
3908 NATIONAL DRIVE SUITE 250 - BURTONSVILLE OFFICE PARK BURTONSVILLE, MD 20866
TELEPHONE: (301) 421-4024

10-13-92 REV. SDP APPROVAL BY HOWARD COUNTY PLANNING BOARD
10-13-92 REVISED PER SPECIFIC TENANT REQUIREMENTS

DATE: 10-13-92 REVISION: 54

PROFILES
BENSON BUSINESS CENTER
SECTION "1" - PARCEL "D"
HOWARD COUNTY, MARYLAND 6TH ELECTION DISTRICT

SCALE	ZONING	G.L.W. FILE NO.
AS SHOWN	NT/M-1	89-035
DATE	TAX MAP NO.	SHEET
10/92	37	60FG

SDP-91-45R