

**NOTE**  
The wetland/stream buffer indicated on this plan does not effect the initial construction of a residential unit on any lot. It does prohibit subsequent clearing, grading or construction in the buffer area. Maintenance of residences, landscaping and utilities is permitted.

**NOTE**  
FENCES OR DECKS ARE NOT TO PROJECT MORE THAN 10' INTO THE FRONT OR REAR YARD BUILDING RESTRICTION LINES PER SECT. 12.8 OF THE HOWARD COUNTY ZONING REGS.

EXISTING STORMWATER MANAGEMENT POND AND DAM

20' FOOT EASEMENT FOR INGRESS AND EGRESS FOR LOT 200

EXISTING SEDIMENT TRAP

OPEN SPACE PART OF LOT 200

OPEN SPACE PART OF LOT 200

CINITY MAP SCALE: 1" = 100'

OPEN SPACE PART OF LOT 200

8-3-89  
LS

**NOTE**  
PROVIDE ± 10' WIDE TRIANGULAR SWALE SEED AND MULCH AND PLACE HIGH-VELOCITY CURLEX BLANKET MATERIAL OVER THE ENTIRE DITCH AREA.

EXISTING SEDIMENT TRAP

OPEN SPACE PART OF LOT 200  
STONE L=4'

PROVIDE ± 7' x 8' WIDE RIP-RAP APRON

PROV. 4"-6" RIP-RAP APRON  
L=10'  
W=12'

(Note: See Sheet C of 4 for Sewer Inlet for each lot)

REVISED AS PER... LATED 9/19/89

SUBJECT PROPERTY ZONED R-20 PER 9/2/85 COMPREHENSIVE ZONING PLAN		TOTAL NUMBER OF LOTS = 30		TOTAL AREA OF SUBMISSION = 52,552 AC.		MAXIMUM LOT COVERAGE = 30%		STORM WATER MANAGEMENT PROVIDED PER F-88-273	
ROCKBURN TOWNSHIP		SECTION 1		AREA 2		LOT 152-170		ELECT. DIST. CODES TR	
PLAN # OR L.P. BLOCK #		ZONE		TAX/ZONE MAP		ELEC. DIST. CODES TR		SEWER CODE	
0693-8641		R20		37		1		2155000	
WATER CODE		003 & 001		SEWER CODE		2155000			

LAND DESIGN ASSOCIATES  
718 HIGHWOOD DRIVE  
BALTIMORE, MD. 21212 301-323-0805

**ROCKBURN TOWNSHIP**

SECTION 1 AREA 2 This Sheet LOTS 152-170

SITE DEVELOPMENT & SEDIMENT CONTROL  
FIRST ELECTION DISTRICT  
HOWARD COUNTY, MARYLAND

FOR: GRAYSON HOMES INC.  
9025 CHEVROLET DRIVE  
ELLCOTT CITY MD. 21043

DESIGNED: P.S.S.  
DRAWN: P.S.S.  
CHECKED: H.C.

SCALE: 1"=30'  
SHEET 1 OF 4  
DATE: 8-29-89

APPROVED FOR PUBLIC WATER AND PUBLIC SEWAGE SYSTEMS - HOWARD COUNTY HEALTH DEPARTMENT  
*[Signature]* 10/25/89  
DATE

APPROVED - HOWARD COUNTY DEPARTMENT OF PLANNING & ZONING  
*[Signature]* 11/8/89  
DATE

APPROVED FOR PUBLIC WATER AND PUBLIC SEWAGE SYSTEMS AND PUBLIC ROADS - HOWARD COUNTY DEPARTMENT OF PUBLIC WORKS  
*[Signature]* 10/26/89  
DATE

APPROVED FOR PUBLIC WATER AND PUBLIC SEWAGE SYSTEMS AND PUBLIC ROADS - HOWARD COUNTY DEPARTMENT OF PUBLIC WORKS  
*[Signature]* 11-23-89  
DATE

CONC. WALK TO BE CONSTRUCTED UNDER ROAD CONSTRUCTION PLAN

THIS DEVELOPMENT PLAN IS APPROVED FOR SOIL EROSION AND SEDIMENT CONTROL BY THE HOWARD SOIL CONSERVATION DISTRICT.  
*[Signature]* 9/26/89  
DATE

REVISED FOR HOWARD S.C.D. AND MEETS TECHNICAL REQUIREMENTS.  
*[Signature]* 9/27/89  
DATE

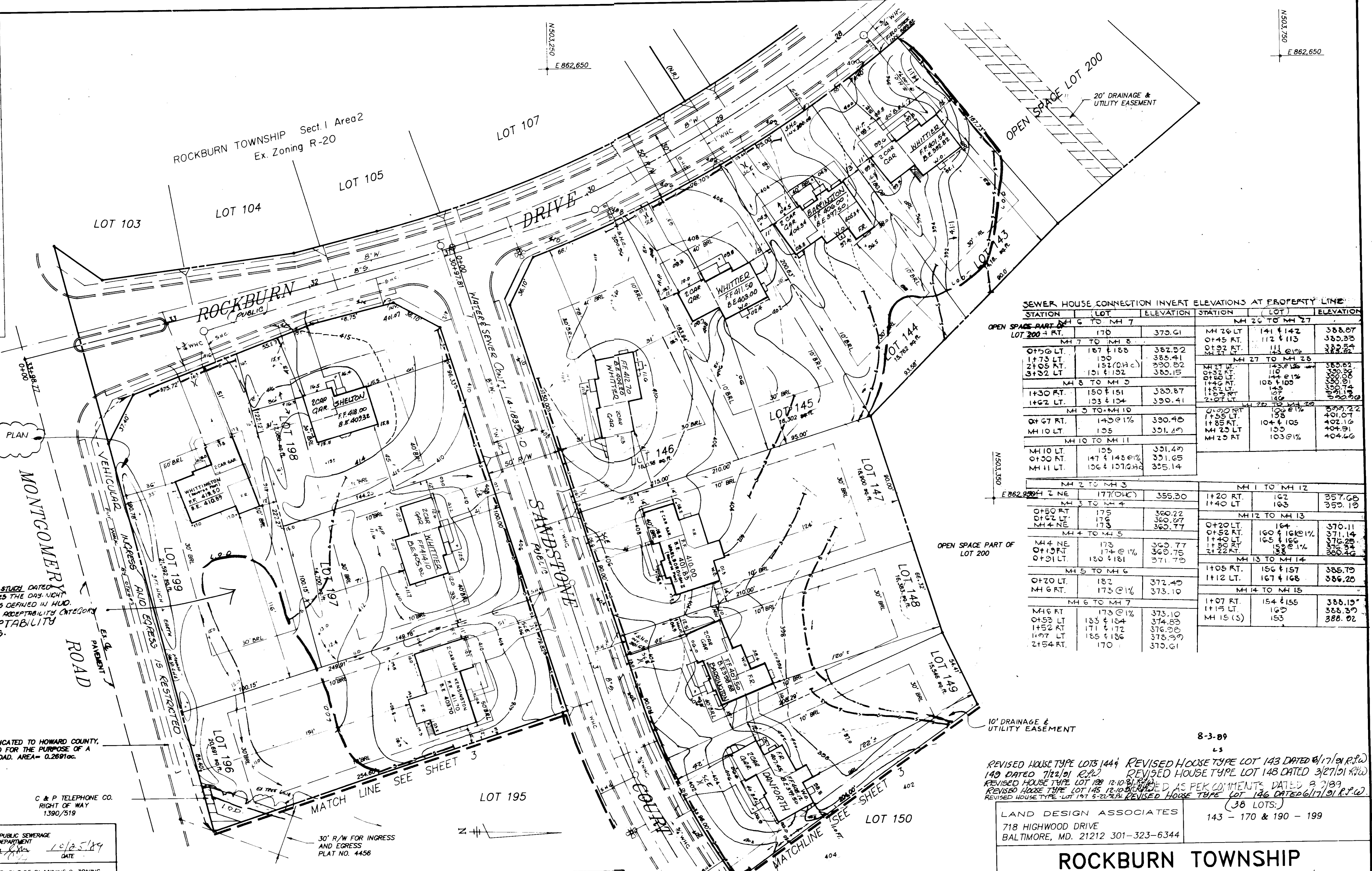
ENGINEER'S CERTIFICATE  
I CERTIFY THAT THIS PLAN FOR EROSION AND SEDIMENT CONTROL REPRESENTS A PRACTICAL AND WORKABLE PLAN BASED ON MY PERSONAL KNOWLEDGE OF SITE CONDITIONS AND THAT IT WAS PREPARED IN ACCORDANCE WITH THE REQUIREMENTS OF THE HOWARD SOIL CONSERVATION DISTRICT.  
*[Signature]* 8 29, 89  
DATE

DEVELOPER/BUILDER'S CERTIFICATE  
I/WE CERTIFY THAT ALL DEVELOPMENT AND CONSTRUCTION WILL BE DONE ACCORDING TO THIS PLAN OF DEVELOPMENT AND PLAN FOR EROSION AND SEDIMENT CONTROL AND THAT ALL RESPONSIBLE PERSONS INVOLVED IN THE CONSTRUCTION PROJECT WILL HAVE A CERTIFICATE OF ATTENDANCE AT A DEPT. OF NATURAL RESOURCES APPROVED TRAINING PROGRAM FOR THE CONTROL OF SEDIMENT AND EROSION CONTROL BEFORE BEGINNING THE PROJECT. I ALSO AUTHORIZE PERIODIC ON-SITE INSPECTION BY THE HOWARD SOIL CONSERVATION DISTRICT OF THEIR AUTHORIZED AGENTS AS DEEMED NECESSARY.  
*[Signature]* 8/29/89  
DATE

ST-X NO. 1  
STONE OUTLET SEDIMENT TRAP  
DRAINAGE AREA: ± 0.92 AC.  
STORAGE VOL. REQ'D: 1456 CU. FT.  
STORAGE VOL. PROV. 1800 CU. FT.  
TRAP SIZE: 15' x 30' x 4'  
BOTTOM ELEV.: 360.00  
STONE CREST ELEV.: 364.00  
MIN. LENGTH STONE 4'  
TOP OF EMBANKMENT: 365.00  
CLEANOUT ELEV.: 362.00  
STORAGE SIDE SLOPES 2:1



LOT #	STREET ADDRESS
143	7776 Rockburn Dr.
144	7772
145	7768
146	7701 Sandstone Ct.
147	7705
148	7709
149	7713
150	7717
151	7721
152	7703 Briarstone Ct.
153	7707
154	7711
155	7715
156	7719
157	7723
158	7727
159	7731
160	7735
161	7739
162	7743
163	7747
164	7751
165	7755
166	7759
167	7763
168	7767
169	7771
170	7775
171	7779
172	7783
173	7787
174	7791
175	7795
176	7799
177	7803
178	7807
179	7811
180	7815
181	7819
182	7823
183	7827
184	7831
185	7835
186	7839
187	7843
188	7847
189	7851
190	7855
191	7859
192	7863
193	7867
194	7871
195	7875
196	7879
197	7883
198	7887
199	7891



SEWER HOUSE CONNECTION INVERT ELEVATIONS AT PROPERTY LINE					
STATION	LOT	ELEVATION	STATION	LOT	ELEVATION
OPEN SPACE PART LOT 200 4 RT.	MH 6 TO MH 7	379.61	MH 26 LT	141 & 142	388.07
0+75 RT.	MH 7 TO MH 8	385.41	0+45 RT.	112 & 113	388.33
1+73 RT.	MH 8 TO MH 9	389.82	0+32 RT.	111	388.84
2+05 RT.	MH 9 TO MH 10	390.82	MH 27 TO MH 28	111 @ 1%	388.84
3+32 RT.	MH 10 TO MH 11	390.15	MH 27 LT.	143 & 144	388.82
MH 3 TO MH 4	145 @ 1%	389.87	0+32 RT.	110	389.36
1+30 RT.	MH 4 TO MH 5	389.87	1+50 LT.	144 @ 1%	389.36
1+62 RT.	MH 5 TO MH 6	390.41	1+46 RT.	105 & 106	389.31
MH 3 TO MH 10	145 @ 1%	390.48	1+52 RT.	145	389.74
0+67 RT.	MH 10 TO MH 11	391.69	1+05 RT.	107	390.18
MH 10 LT.	195	391.69	2+02 RT.	146	390.20
MH 11 LT.	195	391.69	MH 2 TO MH 3	170 @ 1%	389.22
MH 10 LT.	195	391.69	1+55 RT.	138	401.07
0+30 RT.	MH 11 TO MH 12	391.65	1+85 RT.	104 & 105	402.16
MH 11 LT.	196 & 197 @ 1%	395.14	MH 25 LT.	135	404.31
MH 10 TO MH 11	196 @ 1%	395.14	MH 25 RT.	103 @ 1%	404.60
MH 2 TO MH 3	177 (D/C)	355.30	MH 1 TO MH 12	162	357.68
0+50 RT.	MH 3 TO MH 4	360.22	1+40 LT.	163	359.19
0+67 RT.	MH 4 TO MH 5	360.67	MH 12 TO MH 13	164	370.11
MH 4 NE	173	360.77	0+20 RT.	160 & 161 @ 1%	371.14
0+19 RT.	MH 5 TO MH 6	365.77	1+50 RT.	165 & 166	376.25
0+01 RT.	MH 6 TO MH 7	371.70	1+50 RT.	159 @ 1%	376.25
MH 5 TO MH 6	182	372.49	2+22 RT.	168	380.46
0+20 RT.	MH 7 TO MH 8	373.10	MH 13 TO MH 14	140S RT.	156 & 157
MH 6 RT.	MH 8 TO MH 9	373.10	1+12 LT.	167 & 168	386.20
MH 6 RT.	MH 9 TO MH 10	373.10	MH 14 TO MH 15	1+07 RT.	154 & 155
0+53 LT.	MH 10 TO MH 11	374.83	1+15 LT.	162	388.37
1+52 RT.	MH 11 TO MH 12	376.00	MH 15 (S)	153	388.02
1+07 LT.	MH 12 TO MH 13	378.39			
2+54 RT.	MH 13 TO MH 14	379.61			

REVISED HOUSE TYPE LOTS 144, REVISED HOUSE TYPE LOT 143 DATED 8/17/89 R.P.W.  
 149 DATED 7/22/89 R.P.W. REVISED HOUSE TYPE LOT 148 DATED 3/27/89 R.P.W.  
 REVISED HOUSE TYPE LOT 188 12-10-89 REVISED AS PER COMMENTS DATED 9/7/89  
 REVISED HOUSE TYPE LOT 145 12-10-89 REVISED AS PER COMMENTS DATED 6/17/89 R.P.W.  
 REVISED HOUSE TYPE LOT 197 5-22-89 REVISED HOUSE TYPE LOT 196 DATED 6/17/89 R.P.W.  
 (38 LOTS.)

APPROVED FOR PUBLIC WATER AND PUBLIC SEWERAGE SYSTEMS HOWARD COUNTY HEALTH DEPARTMENT  
 ADAM L. BROWN, COUNTY HEALTH OFFICER, 10/25/89

APPROVED HOWARD COUNTY DEPARTMENT OF PLANNING & ZONING  
 JAMES A. SMITH, PLANNING DIRECTOR, 11/8/89  
 JAMES A. SMITH, CHIEF DEPT. OF COMMUNITY PLANNING AND DEVELOPMENT, 11/22/89

APPROVED FOR PUBLIC WATER AND PUBLIC SEWERAGE STORM DRAINAGE SYSTEMS AND PUBLIC ROADS HOWARD COUNTY DEPARTMENT OF PUBLIC WORKS  
 JAMES A. SMITH, DIRECTOR, 10/25/89  
 JAMES A. SMITH, CHIEF BUREAU OF ENGINEERING, 10/25/89

THIS DEVELOPMENT PLAN IS APPROVED FOR SOIL EROSION AND SEDIMENT CONTROL BY THE HOWARD SOIL CONSERVATION DISTRICT.  
 JOHN H. ROBERTSON, 9/26/89  
 JOHN H. ROBERTSON, 9/27/89

REVISED FOR HOWARD S.C.D. AND MEETS TECHNICAL REQUIREMENTS.  
 JOHN H. ROBERTSON, 9/27/89

DEVELOPERS/BUILDER'S CERTIFICATE  
 I/WE CERTIFY THAT ALL DEVELOPMENT AND CONSTRUCTION WILL BE DONE ACCORDING TO THIS PLAN OF DEVELOPMENT AND PLAN FOR EROSION AND SEDIMENT CONTROL AND THAT ALL RESPONSIBLE PERSONS INVOLVED IN THE CONSTRUCTION PROJECT WILL HAVE A CERTIFICATE OF ATTENDANCE AT A DEPT. OF NATURAL RESOURCES APPROVED TRAINING PROGRAM FOR THE CONTROL OF SEDIMENT AND EROSION CONTROL BEFORE BEGINNING THE PROJECT. I ALSO AUTHORIZE PERIODIC ON-SITE INSPECTION BY THE HOWARD SOIL CONSERVATION DISTRICT OF THEIR AUTHORIZED AGENTS AS DEEMED NECESSARY.  
 WALTER P. HANDEE, 8/29/89

ENGINEER'S CERTIFICATE  
 I CERTIFY THAT THIS PLAN FOR EROSION AND SEDIMENT CONTROL REPRESENTS A PRACTICAL AND WORKABLE PLAN BASED ON MY PERSONAL KNOWLEDGE OF SITE CONDITIONS AND THAT IT WAS PREPARED IN ACCORDANCE WITH THE REQUIREMENTS OF THE HOWARD SOIL CONSERVATION DISTRICT.  
 WALTER P. HANDEE, 8/29/89



PROP DRAINAGE FROM LOTS 195 & 196 IS DIVERTED AWAY FROM CISNA PROPERTY BY A SWALE AT SE AREA OF LOTS 195 & 196

MATCH LINE SEE SHEET 2

NOTE: NATURAL TOPO AS SHOWN ON PLAN INDICATES NO GRADING, ALLOWING EXISTING VEGETATION TO REMAIN IF SO DETERMINED.

- GENERAL NOTES
- 1) THE LAND INCLUDED IS ZONED R-20
  - 2) COORDINATES SHOWN ARE EXTENSIONS MADE FROM THE MARYLAND STATE PLANE COORDINATE SYSTEM. BEARINGS REFER TO THE TRUE NORTH AND ARE BASED ON HOWARD COUNTY GEODETIC SURVEY POINT NO. 2444004 AND NO. 2444005
  - 3) THE AREA COVERED IN THIS SUBMISSION IS LOCATED ON TAX MAP 37
  - 4) THE TOTAL AREA ON THIS PLAN IS 639,060 SQ. FT. (14.68 AC.)
  - 5) ALL ROADS ARE PUBLIC AND EXISTING.
  - 6) ANY DAMAGE TO COUNTY OWNED RIGHT-OF-WAYS SHALL BE CORRECTED AT THE DEVELOPER'S EXPENSE.
  - 7) TOTAL NUMBER OF LOTS IN THIS SUBMISSION ARE 38
  - 8) STREET TREES WILL BE PROVIDED IN ACCORDANCE WITH SECTION 16.131 OF THE HOWARD COUNTY SUBDIVISION REGULATIONS BY THE DEVELOPER.

LOT SIZE CHART (MIN. LOT SIZE ALL LOTS: 14,000 sq. ft.)

LOT NO.	SQUARE FEET		PROP. SLOPES > 25%	NET AREA
	GROSS AREA	EX. SLOPES > 25%		
143	14,163	300	104	14,059
144	15,762	0	346	15,416
145	16,302	0	200	16,102
146	18,036	0	0	18,036
147	18,900	0	0	18,900
148	16,383	0	161	16,222
149	15,546	0	192	15,354
150	15,919	0	0	15,919
151	17,775	144	0	17,631
152	17,354	0	0	17,354
153	14,182	0	0	14,182
154	14,890	0	0	14,890
155	15,739	0	125	15,614
156	15,739	0	120	15,619
157	15,739	0	240	15,499
158	15,739	0	848	14,891
159	15,346	0	625	14,721
160	15,407	0	945	14,462
161	17,948	0	750	17,198
162	14,566	1,050	400	14,166
163	15,489	800	1250	14,239
164	20,803	0	908	19,895
165	15,781	390	350	15,431
166	14,800	189	180	14,422
167	15,371	0	72	15,299
168	14,319	0	0	14,319
169	14,056	0	0	14,056
170	17,401	280	0	17,401
190	14,000	0	0	14,000
191	20,001	0	0	20,001
192	20,737	0	0	20,737
193	21,294	0	0	21,294
194	20,250	0	0	20,250
195	20,060	0	0	20,060
196	20,691	0	309	20,382
197	14,700	0	50	14,650
198	17,080	0	600	16,480
199	21,592	0	2,340	19,252

Notes See Sheet 2 of 4 for Sewer invert for each lot.  
 REVISED HOUSE TYPE LOT 150, 6-17-91 R.W. L.O.A.  
 REVISED HOUSE TYPE LOT 151, 12-10-91 R.W. L.O.A.

REVISED AS PER COMMENTS DATED 8/9/89

LAND DESIGN ASSOCIATES  
 718 HIGHWOOD DRIVE  
 BALTIMORE, MD. 21212 301-323-6344

ROCKBURN TOWNSHIP  
 SECTION 1 AREA 2 This sheet LOTS 150, 151 & 190-195  
 SITE DEVELOPMENT & SEDIMENT CONTROL  
 FIRST ELECTION DISTRICT  
 HOWARD COUNTY, MARYLAND

FOR: GRAYSON HOMES INC.  
 9025 CHEVROLET DRIVE  
 ELLICOTT CITY MD. 21043

DESIGNED: P.S.  
 DRAWN: P.S.  
 CHECKED: H.C.

SCALE: 1"=30'  
 SHEET 3 OF 4  
 DATE: 8-20-89

APPROVED FOR PUBLIC WATER AND PUBLIC SEWERAGE SYSTEMS HOWARD COUNTY HEALTH DEPARTMENT  
 [Signature] 10/25/89  
 COUNTY HEALTH OFFICER

APPROVED HOWARD COUNTY DEPARTMENT OF PLANNING & ZONING  
 [Signature] 11/8/89  
 PLANNING DIRECTOR

APPROVED FOR PUBLIC WATER AND PUBLIC SEWERAGE TOWN DRAINAGE SYSTEMS AND PUBLIC ROADS HOWARD COUNTY DEPARTMENT OF PUBLIC WORKS  
 [Signature] 10/25/89  
 DIRECTOR

SELF BUREAU OF ENGINEERING P  
 [Signature] 10/25/89  
 DATE

THIS DEVELOPMENT PLAN IS APPROVED FOR SOIL EROSION AND SEDIMENT CONTROL BY THE HOWARD SOIL CONSERVATION DISTRICT.  
 [Signature] 9/26/89  
 APPROVED

DESIGNED FOR HOWARD S.C.D. AND MEETS TECHNICAL REQUIREMENTS.  
 [Signature] 9/27/89  
 DATE

NATURE OF SOIL CONSERVATION SERVICE

DEVELOPERS/BUILDERS CERTIFICATE  
 I/WE CERTIFY THAT ALL DEVELOPMENT AND CONSTRUCTION WILL BE DONE ACCORDING TO THIS PLAN OF DEVELOPMENT AND PLAN FOR EROSION AND SEDIMENT CONTROL AND THAT ALL RESPONSIBLE PERSONS INVOLVED IN THE CONSTRUCTION PROJECT WILL HAVE A CERTIFICATE OF ATTENDANCE AT A DEPT. OF NATURAL RESOURCES APPROVED TRAINING PROGRAM FOR THE CONTROL OF SEDIMENT AND EROSION CONTROL BEFORE BEGINNING THE PROJECT. I ALSO AUTHORIZE PERIODIC ON-SITE INSPECTION BY THE HOWARD SOIL CONSERVATION DISTRICT OF THEIR AUTHORIZED AGENTS AS DEEMED NECESSARY.

[Signature] 8/19/89  
 SIGNATURE OF DEVELOPER BUILDER DATE

ENGINEERS CERTIFICATE  
 I CERTIFY THAT THIS PLAN FOR EROSION AND SEDIMENT CONTROL REPRESENTS A PRACTICAL AND WORKABLE PLAN BASED ON MY PERSONAL KNOWLEDGE OF SITE CONDITIONS AND THAT IT WAS PREPARED IN ACCORDANCE WITH THE REQUIREMENTS OF THE HOWARD SOIL CONSERVATION DISTRICT.

[Signature] 8/29/89  
 ENGINEER DATE

[Signature]

8-3-89  
 LS



