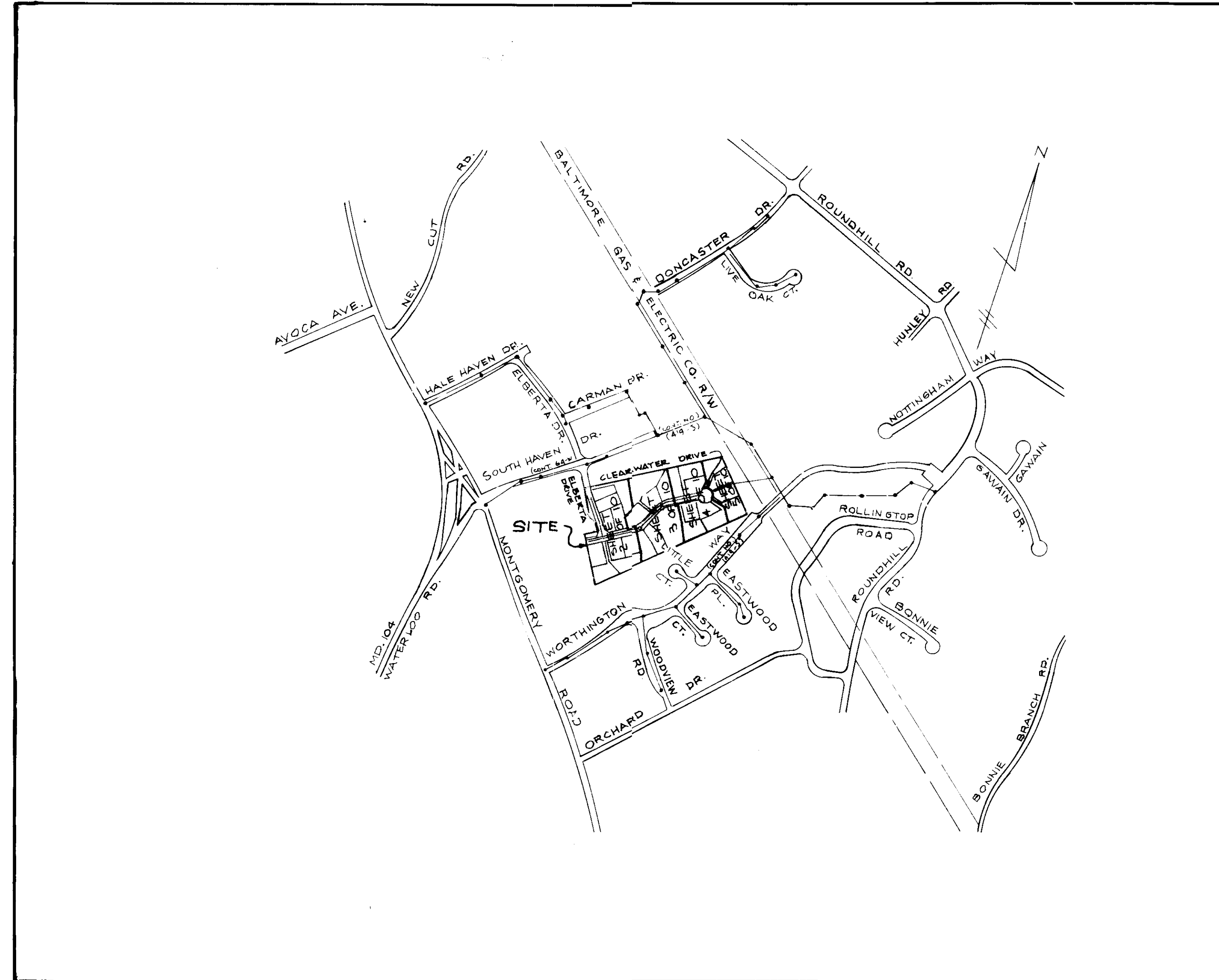


BROOKFIELD

LOTS 1 THRU 31

SITE DEVELOPMENT PLAN



VICINITY MAP

scale: 1" = 600'-0"

GENERAL NOTES OF CONSTRUCTION

1. All work shall be performed in accordance with the Howard County Design Manual, Vol. IV, i.e., standard specifications and details for construction.
2. Approximate location of existing utilities are shown. The contractor shall take all necessary precautions to protect the existing utilities and maintain uninterrupted service. Any damage incurred due to contractor's operation shall be repaired immediately at the contractor's expense.
3. Contractor shall notify the following utilities at least five (5) days prior to beginning work shown on these drawings.
 - Miss utility559-0100
 - Bell telephone system393-3649
 - Long distance cable division393-3553/3554
 - Baltimore Gas & Electric Company...539-8000
 - Howard County Bureau of Utilities...992-2366
 - Howard County Construction/Inspection Survey Division (24 hours notice prior of commencement of work)792-7272
4. Installation of traffic control devices, marking, and signing shall be in accordance with the manual of uniform traffic control devices, 1984 edition (revised).
5. All elevations shown are based on U.S.C. and G.S. mean sea level datum, 1929.
6. All fill areas within roadways and/or under structures to be compacted to a minimum 95% compaction.
7. All pipe elevations shown are invert elevations.
8. Subject property zoned R-70 per 08-02-85 comprehensive zoning plan.
9. No pipe shall be laid in place until lines of excavation have been brought to within six (6) inches of finished grade elevations.
10. Existing house on lot "3" to remain.
11. SWM IS PROVIDED FOR UNDER F. 60.07.

NO.	DESCRIPTION	BY	DATE
REVISION			

APPROVED FOR PUBLIC WATER AND PUBLIC SEWERAGE SYSTEMS
HOWARD COUNTY HEALTH DEPARTMENT

[Signature] 11-14-89
County Health Officer

APPROVED: HOWARD COUNTY DEPT. OF PLANNING & ZONING

[Signature] 12/8/87
Date
[Signature] 12/24/87
Date
Chief, Division of Community Planning and Land Development

APPROVED FOR PUBLIC WATER AND PUBLIC SEWERAGE
STORM DRAINAGE SYSTEMS AND PUBLIC ROADS
HOWARD COUNTY DEPARTMENT OF PUBLIC WORKS

[Signature] 11/8/87
Date
[Signature] 11-8-87
Date
Chief Bureau of Engineering

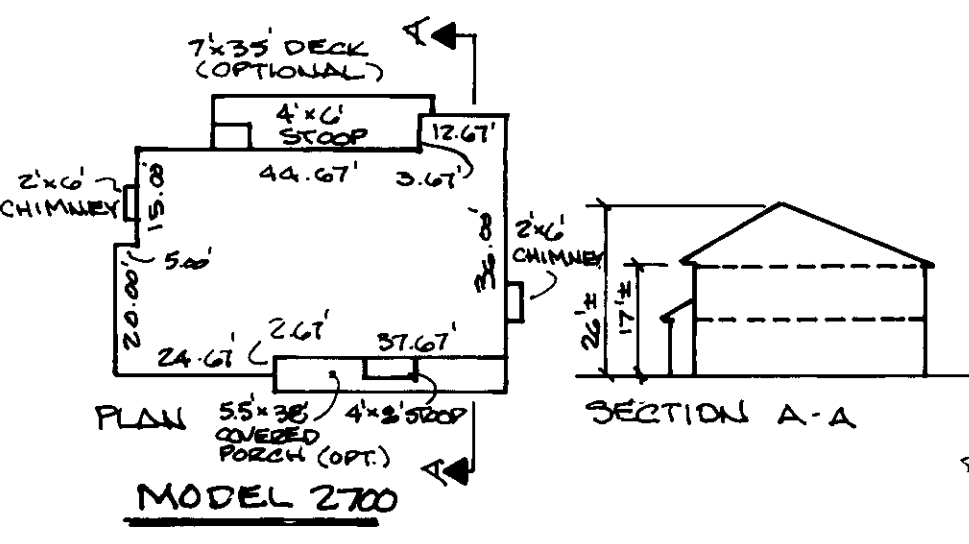
7-13-89
S.O.

LOT NUMBERS	STREET ADDRESS	LOT NUMBERS	STREET ADDRESS	LOT NUMBERS	STREET ADDRESS
9	4915 CLEARWATER DRIVE	18	4914 CLEARWATER DRIVE	27	4950 CLEARWATER DRIVE
8	4923	17	4910	26	4946
7	4927	16	4906	25	4942
6	4931	15	4902	24	4938
5	4935	14	4898	23	4934
4	4939 CLEARWATER DRIVE	13	4903	22	4930
3	8124 ELBERTA DRIVE	12	4907	21	4926
2	8128	11	4911	20	4922
1	8202 ELBERTA DRIVE	10	4915 CLEARWATER DRIVE	19	4918 CLEARWATER DRIVE

OWNER
CHATEAU HOMES, INC.
8800 COLUMBIA 100 PKWY.
SUITE 100
COLUMBIA, MD 21045
(301) 720-0400

SUBDIVISION NAME BROOKFIELD		SECT./AREA	LOT/PANCL # LOTS 1 THRU 31
PLAT # OR L.P. PB 2005-2007	BLOCK # 8	ZONE R-20	TAXI/ZONE MAP ELEC. DIST. CENSUS TR. 31 2nd
WATER CODE G01		SEWER CODE 1257025	

TITLE SHEET		
BROOKFIELD LOTS 1 THRU 31		
PROJECT:		
D.P.&Z. FILE NOS.: GP-88-67P-88-2378-87-88P-22-01 TAX MAP #31, BLOCK #9, PARCEL 351		
DES. BY: JTN/WLC	DRAWN BY: LHC	11 WARREN ROAD BALTIMORE, MD 21208 1301) 484-4100



NO.	DESCRIPTION	BY	DATE
1	LOT 2 Model B-2A REV to 2700	DMW	2/16/94
2	LOT 3 Model F to 2700	DMW	7/21/93
3	LOT 24 Model B to A	FCC	01/03/93
4	LOT 4 MODEL D TO A	FCC	11/30/92
5	LOT 3 Model B to A	FCC	6/9/92
6	LOT 5 Model B TO F	FCC	3/6/92
7	LOT 23 Model D to A	FCC	2/16/92

REVISION

APPROVED FOR PUBLIC WATER AND PUBLIC SEWERAGE SYSTEMS
HOWARD COUNTY HEALTH DEPARTMENT

James M. Boyd 11/14/99
Chief Health Officer

APPROVED: HOWARD COUNTY DEPT. OF PLANNING & ZONING

James Smith 12/6/89
Director

Robert J. Dwyer 12/1/89
Chief, Division of Community Planning and Land Development

APPROVED FOR PUBLIC WATER AND PUBLIC SEWERAGE
STORM DRAINAGE SYSTEMS AND PUBLIC ROADS
HOWARD COUNTY DEPARTMENT OF PUBLIC WORKS

James J. ... 11/8/89
Director

... 11/8/89
Chief Bureau of Engineering

NOTE:
THE WETLAND BUFFER INDICATED ON THIS SITE DEVELOPMENT PLAN DOES NOT EFFECT THE INITIAL CONSTRUCTION OF A RESIDENTIAL UNIT ON ANY LOT. IT DOES PREVENT SUBSEQUENT CLEARING, GRADING OR CONSTRUCTION OF BUFFER AREA MAINTENANCE OF RESIDENCES, LANDSCAPING AND UTILITIES IS PERMITTED.

ENGINEER'S CERTIFICATE

I CERTIFY THAT THIS PLAN FOR EROSION AND SEDIMENT CONTROL REPRESENTS A PRACTICAL AND WORKABLE PLAN BASED ON PERSONAL KNOWLEDGE OF THE SITE CONDITIONS AND THAT IT WAS PREPARED IN ACCORDANCE WITH THE REQUIREMENTS OF THE HOWARD HILL CONSERVATION DISTRICT.

Dwight ... 12-2-89
ENGINEER DATE

DEVELOPER'S CERTIFICATION

I CERTIFY THAT ALL DEVELOPMENT AND CONSTRUCTION WILL BE DONE ACCORDING TO THIS PLAN OF DEVELOPMENT AND PLAN FOR EROSION AND SEDIMENT CONTROL AND THAT ALL RESPONSIBLE PERSONNEL INVOLVED IN THE CONSTRUCTION PROJECT WILL HAVE A CERTIFICATE OF ATTENDANCE AT THE DEPARTMENT OF NATURAL RESOURCES APPROVED TRAINING PROGRAM FOR THE CONTROL OF EROSION AND SEDIMENT BEFORE BEGINNING THE PROJECT. I ALSO AUTHORIZE PERIODIC ON-SITE INSPECTIONS BY THE HOWARD HILL CONSERVATION DISTRICT OR THEIR AUTHORIZED AGENTS, AS ARE DEEMED NECESSARY.

Richard ... 10-2-89
DEVELOPER DATE

PROFESSIONAL ENGINEER STAMPS:

- LOT 2 MODEL REVISION 2-16-94
- LOT 3 MODEL REVISION 7-27-93
- LOT 4 MODEL REVISION 11/30/92
- LOT 5 MODEL REVISION 11/30/92
- LOT 3 MODEL REVISION 6/9/92
- LOT 5 MODEL REVISION 3/6/92
- LOT 23 MODEL REVISION 2/16/92
- LOT 3 MODEL REVISION 11/14/99
- LOT 3 MODEL REVISION 5/28/92
- LOT 4 MODEL REVISION 11/30/92
- LOT 23 MODEL REVISION 2/16/92
- LOT 5 MODEL REVISION 3/4/92

OWNER
CHATEAU HOMES, INC.
2600 COLUMBIA 100 PKWY.
SUITE 100
COLUMBIA, MD 21045
(301) 720-0400

TITLE: SITE DEVELOPMENT PLAN

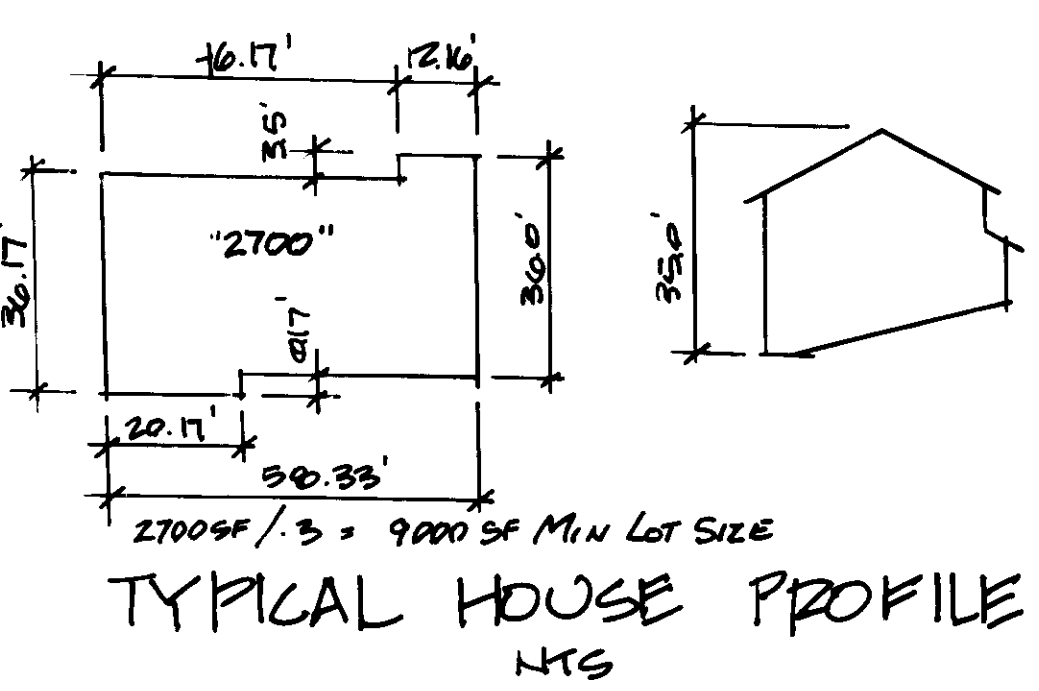
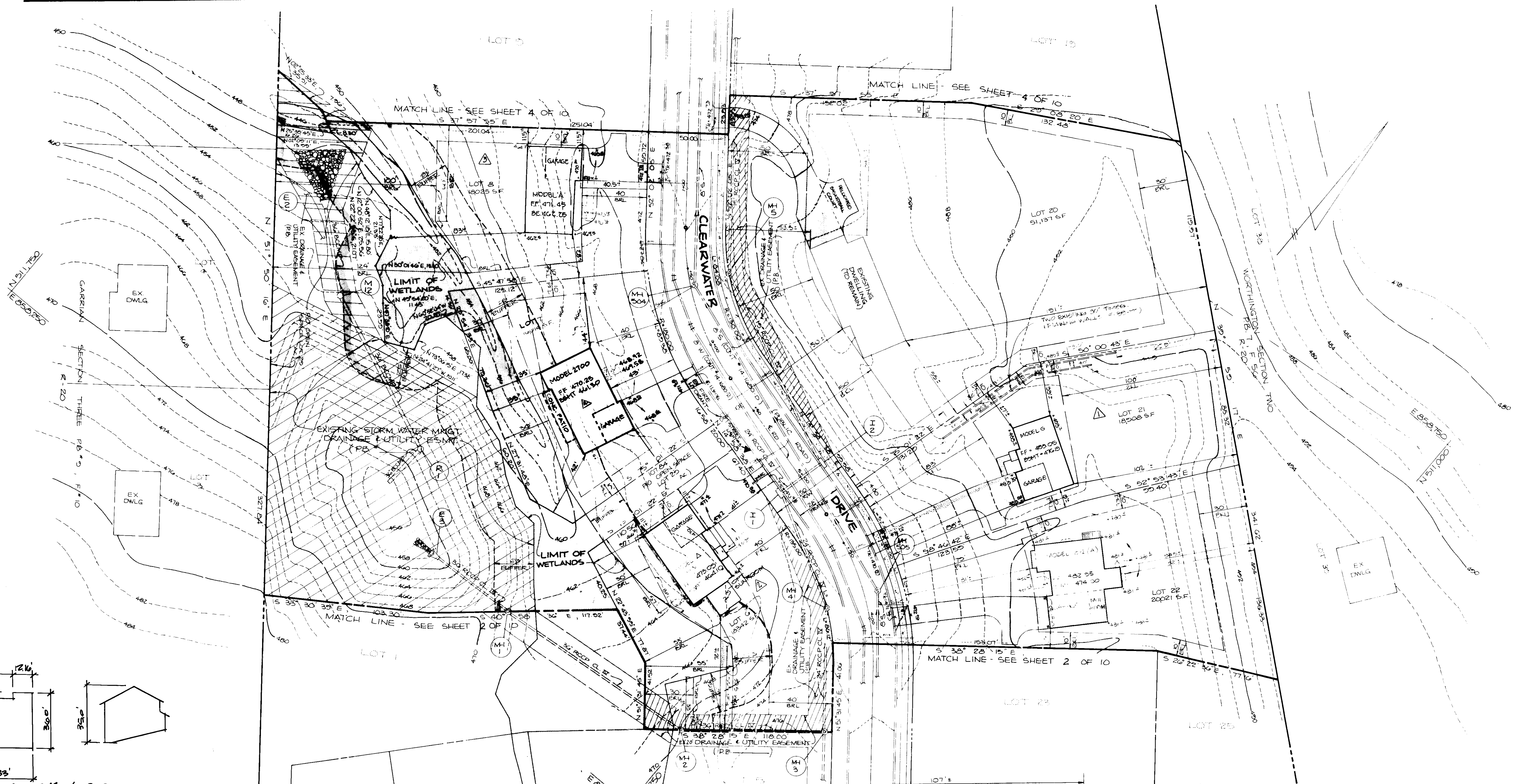
PROJECT: BROOKFIELD LOTS 1 THRU 31

D.P. & Z. FILE NO. 24-08-01, 100-23-9-01, 24-08-01
TAX MAP: 51, BLOCK 8 PARCEL: 351

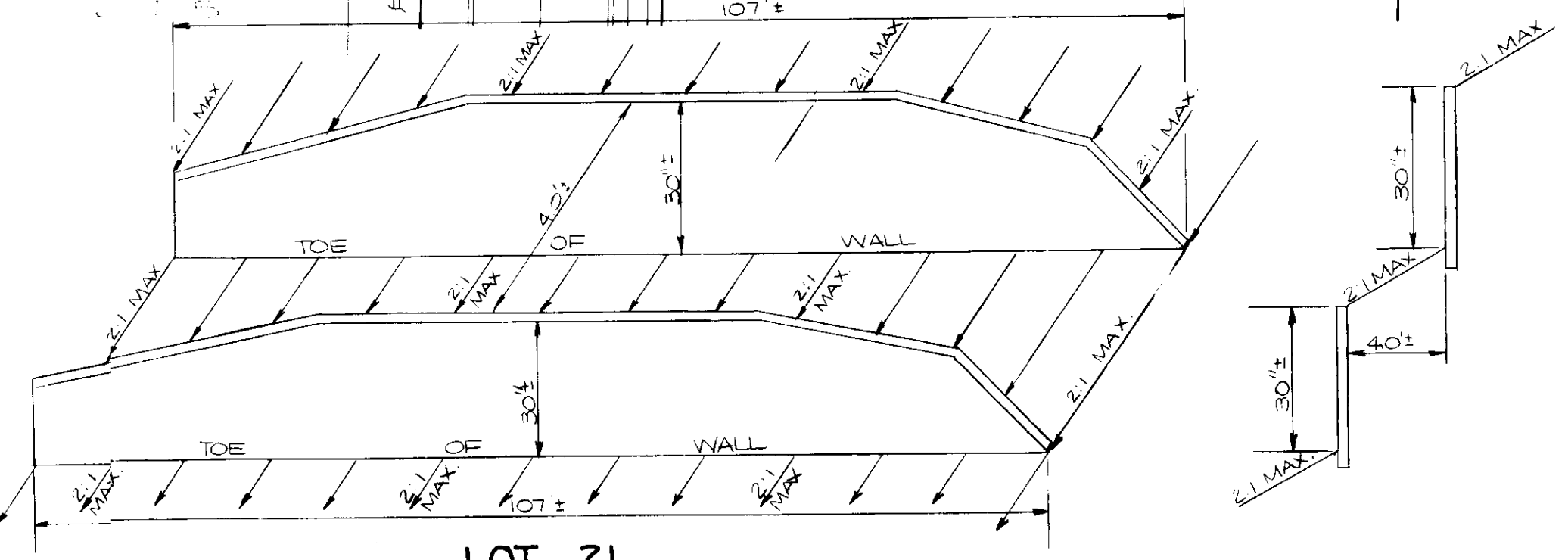
SECOND ELECTION DISTRICT: HOWARD COUNTY, MD

DES. BY: JTN/BLL
DRAWN BY: LRC
CHKD BY: JTN
DATE: SEPT, 1989

11 WARREN ROAD
BALTIMORE, MD 21208
(301) 484-4100
SCALE: 1"=30' SHEET 2 OF 2



NOTE:
THE WETLAND BUFFER INDICATED ON THIS SITE DEVELOPMENT PLAN DOES NOT EFFECT THE INITIAL CONSTRUCTION OF A RESIDENTIAL UNIT ON ANY LOT. IT DOES PROHIBIT SUBSEQUENT CLEARING, GRADING OR CONSTRUCTION IN THE BUFFER AREA. MAINTENANCE OF RESIDENCES, LANDSCAPING AND UTILITIES IS PERMITTED.



LOT 21
RETAINING WALLS SCHEMATIC ELEVATION & CROSS-SECTION
NOT TO SCALE
DESIGNED BY H.F.S.

OWNER
CHATEAU HOMES, INC.
8800 COLUMBIA 100 PKWY.
SUITE 100
COLUMBIA, MD. 21045
(301) 720-0400

NO.	DESCRIPTION	BY	DATE
△	LOT 7 TO MODEL 2700	DMW	7/21/93
△	LOT 8 MODEL D TO A	FCC	11/18/92
△	LOT 6 MODEL C TO A	FCC	3/06/92
△	LOT 21 MODEL C TO G	FCC	2/18/92

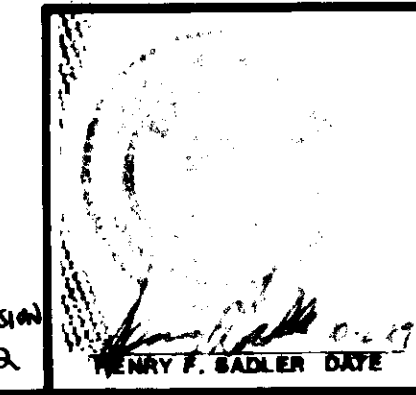
REVISION	
APPROVED FOR PUBLIC WATER AND PUBLIC SEWERAGE SYSTEMS HOWARD COUNTY HEALTH DEPARTMENT	
<i>John M. Boyd</i> County Health Officer	11-14-87 Date
APPROVED HOWARD COUNTY DEPT. OF PLANNING & ZONING	
<i>Joseph Smith</i> Director	12/8/87 Date
<i>Mark S. D'Angelo</i> Chief, Division of Community Planning and Land Development	12/14/87 Date
APPROVED FOR PUBLIC WATER AND PUBLIC SEWERAGE STORM DRAINAGE SYSTEMS AND PUBLIC ROADS HOWARD COUNTY DEPARTMENT OF PUBLIC WORKS	
<i>James J. [unclear]</i> Director	1/2/87 Date
<i>William P. [unclear]</i> Chief Bureau of Engineering	1/18/87 Date

APPROVED
7-13-87
J.B.

ENGINEER'S CERTIFICATE
I CERTIFY THAT THIS PLAN FOR EROSION AND SEDIMENT CONTROL REPRESENTS A PRACTICAL AND WORKABLE PLAN BASED ON PERSONAL KNOWLEDGE OF THE SITE CONDITIONS AND THAT IT WAS PREPARED IN ACCORDANCE WITH THE REQUIREMENTS OF THE HOWARD SOIL CONSERVATION DISTRICT.
William P. [unclear]
ENGINEER
DATE

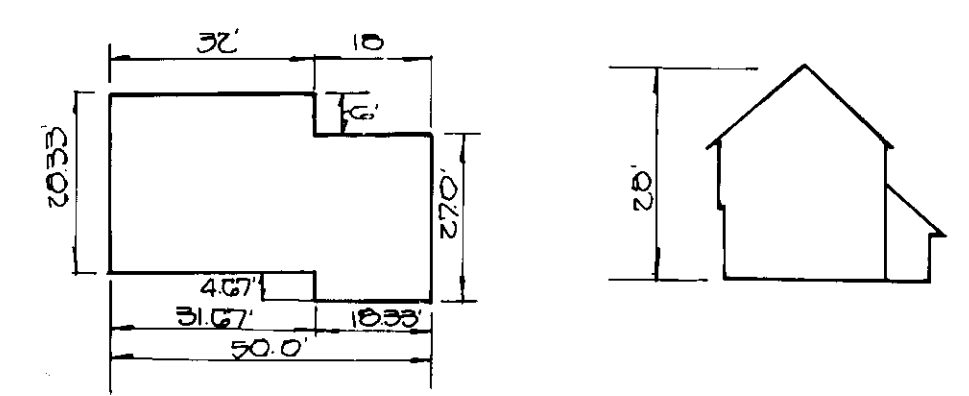
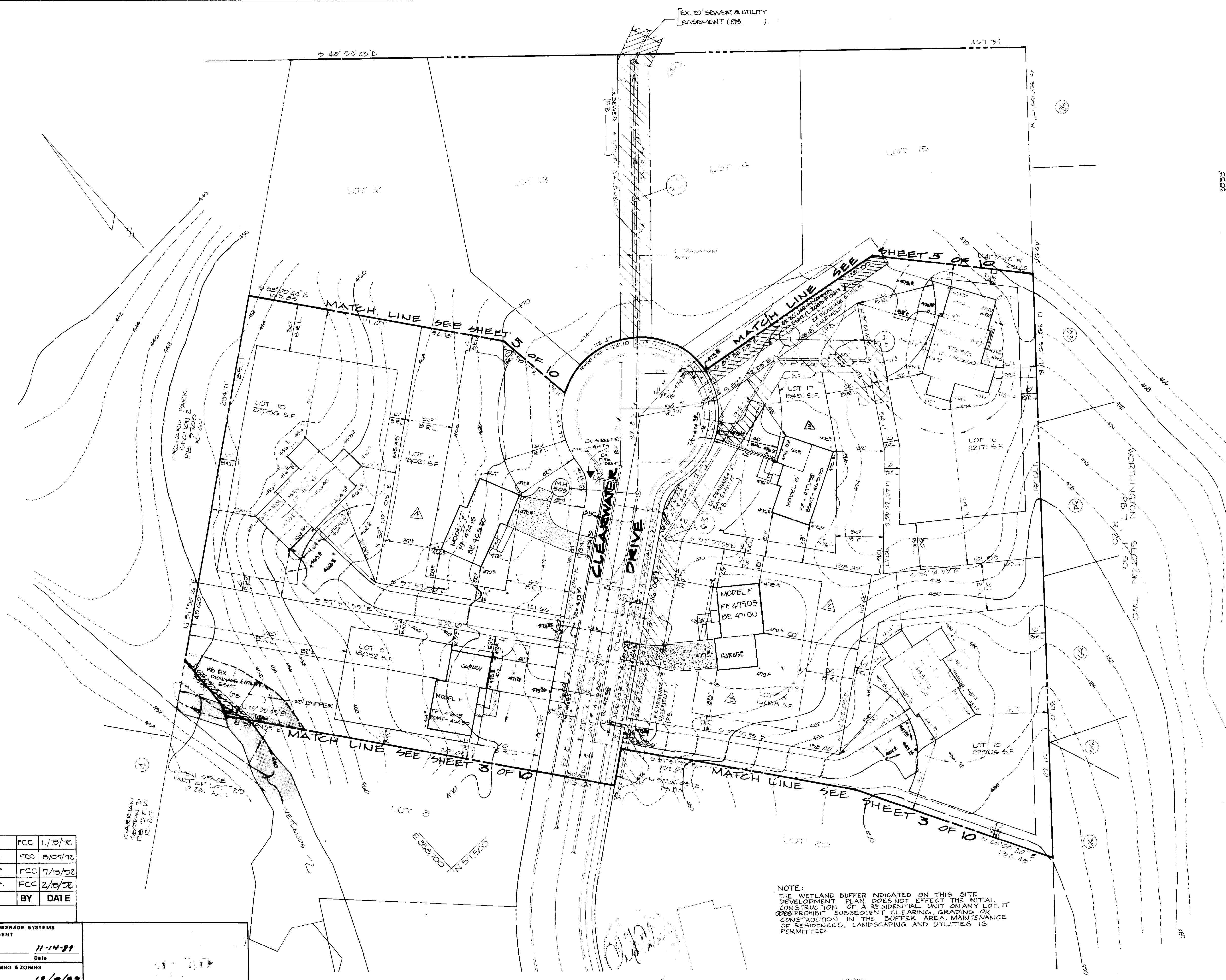
DEVELOPER'S CERTIFICATION
I CERTIFY THAT ALL DEVELOPMENT AND CONSTRUCTION WILL BE DONE ACCORDING TO THIS PLAN OF DEVELOPMENT AND PLAN FOR EROSION AND SEDIMENT CONTROL AND THAT ALL RESPONSIBLE PERSONNEL INVOLVED IN THE CONSTRUCTION PROJECT WILL HAVE A CERTIFICATE OF ATTENDANCE AT THE DEPARTMENT OF NATURAL RESOURCES APPROVED TRAINING PROGRAM FOR THE CONTROL OF EROSION AND SEDIMENT BEFORE BEGINNING THE PROJECT. I ALSO AUTHORIZE PERIODIC ON-SITE INSPECTIONS BY THE HOWARD SOIL CONSERVATION DISTRICT OR THEIR AUTHORIZED AGENTS, AS ARE DEEMED NECESSARY.
William P. [unclear]
DEVELOPER
DATE

William P. [unclear]
John M. Boyd
Joseph Smith
Mark S. D'Angelo
James J. [unclear]
William P. [unclear]

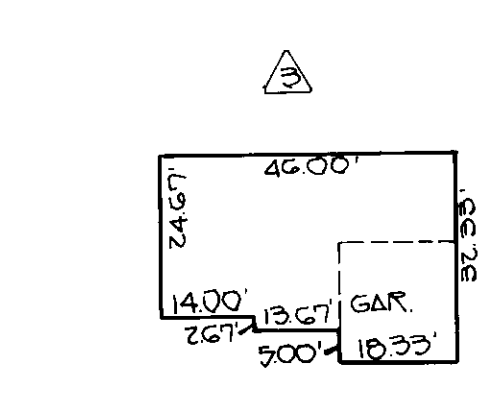


TITLE: SITE DEVELOPMENT PLAN	
PROJECT: BROOKFIELD LOTS 1 THRU 31	
D.P.#2, FILE NOS.: OP-48-47P-88-23/S-87-88(F-88-91) TAX MAP 31, BLOCK 8, PARCEL 351	
SECOND ELECTION DISTRICT, HOWARD COUNTY, MD.	
DES. BY: JTB/BLK/MRS	DATE: SEPT. 1987
DRAWN BY: LRC	CHKD. BY: JTN

DST&A Inc.
11 WARREN ROAD
BALTIMORE, MD 21208
(301) 484-4100
SCALE: 1"=20'
SHEET 3 OF 10



FRANKLIN
TYPICAL HOUSE PROFILE
NOT TO SCALE



MODEL G
GARRISON
TYPICAL FOOTPRINT
NOT TO SCALE

NO.	DESCRIPTION	BY	DATE
1	LOT 11 MODEL C TO F	FCC	11/18/92
2	LOT 17 MODEL C TO G	FCC	8/01/92
3	LOT 18 MODEL B TO F	FCC	7/13/92
4	LOT 9 MODEL B TO F	FCC	2/18/92

REVISION			
NO.	DESCRIPTION	BY	DATE
1	APPROVED FOR PUBLIC WATER AND PUBLIC SEWERAGE SYSTEMS HOWARD COUNTY HEALTH DEPARTMENT	Joyce M. Boyd M.P. F.S.	11-14-99
2	APPROVED: HOWARD COUNTY DEPT. OF PLANNING & ZONING	Joseph A. Miller	12/8/92
3	APPROVED FOR PUBLIC WATER AND PUBLIC SEWERAGE STORM DRAINAGE SYSTEMS AND PUBLIC ROADS HOWARD COUNTY DEPARTMENT OF PUBLIC WORKS	James J. Kelly	11/16/92
4	Chief Bureau of Engineering	James J. Kelly	11-18-92

7-13-87 J.A.

ENGINEER'S CERTIFICATE
I CERTIFY THAT THIS PLAN FOR EROSION AND SEDIMENT CONTROL REPRESENTS A PRACTICAL AND WORKABLE PLAN BASED ON PERSONAL KNOWLEDGE OF THE SITE CONDITIONS AND THAT IT WAS PREPARED IN ACCORDANCE WITH THE REQUIREMENTS OF THE HOWARD SOIL CONSERVATION DISTRICT.

7-13-87 J.A.

DEVELOPER'S CERTIFICATION
I CERTIFY THAT ALL DEVELOPMENT AND CONSTRUCTION WILL BE DONE ACCORDING TO THIS PLAN OF DEVELOPMENT AND PLAN FOR EROSION AND SEDIMENT CONTROL AND THAT ALL RESPONSIBLE PERSONNEL INVOLVED IN THE CONSTRUCTION PROJECT WILL HAVE A CERTIFICATE OF ATTENDANCE AT THE DEPARTMENT OF NATURAL RESOURCES APPROVED TRAINING PROGRAM FOR THE CONTROL OF EROSION AND SEDIMENT BEFORE BEGINNING THE PROJECT. I ALSO AUTHORIZE PERSONS ON-SITE INSTRUCTIONS BY THE HOWARD SOIL CONSERVATION DISTRICT OR THEIR AUTHORIZED AGENTS, IF ARE DEEMED NECESSARY.

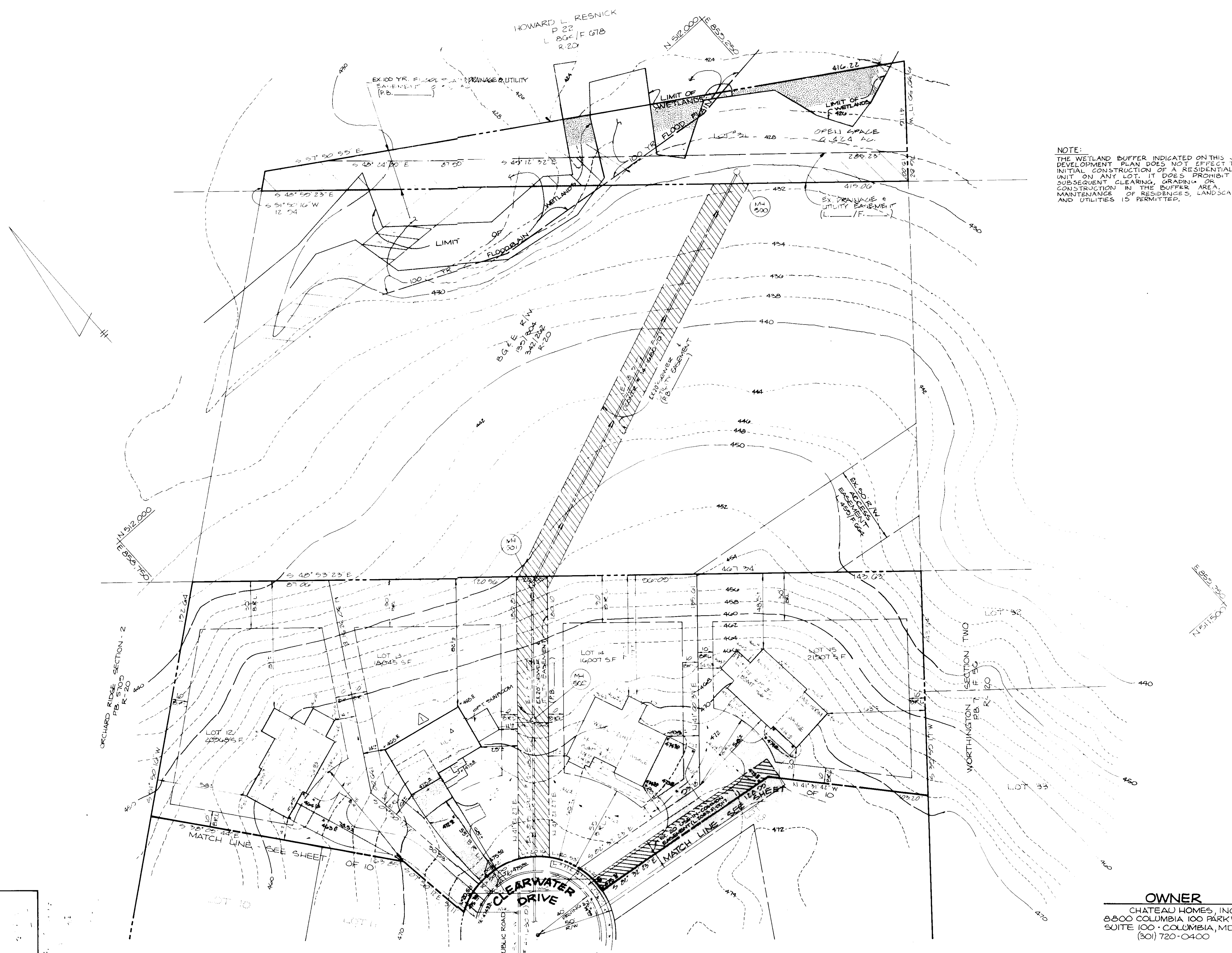
LOT 18
MODEL REVISION 7/13/92

LOT 17
MODEL REVISION 8/1/92

LOT 9
MODEL REVISION 2/18/92

NOTE:
THE WETLAND BUFFER INDICATED ON THIS SITE DEVELOPMENT PLAN DOES NOT EFFECT THE INITIAL CONSTRUCTION OF A RESIDENTIAL UNIT ON ANY LOT. IT DOES PROHIBIT SUBSEQUENT CLEARING, GRADING OR CONSTRUCTION IN THE BUFFER AREA, MAINTENANCE OF RESIDENCES, LANDSCAPING AND UTILITIES IS PERMITTED.

TITLE: SITE DEVELOPMENT PLAN PROJECT: BROOKFIELD LOTS 1 THRU 31		 11 WARREN ROAD BALTIMORE, MD 21208 (301) 484-4100
D.P.#2, FILE NOS.: GP-88-67/P-88-23/S-87-88 TAX MAP: 31, BLOCK: 8, PARCEL: 351	SECOND ELECTION DISTRICT: HOWARD COUNTY, MD. DES. BY: JTN DRAWN BY: JTN DATE: SEPT. 1992	
SCALE: 1" = 30' SHEET 4 OF 4		SDDP-89-175



NOTE:
 THE WETLAND BUFFER INDICATED ON THIS SITE DEVELOPMENT PLAN DOES NOT EFFECT THE INITIAL CONSTRUCTION OF A RESIDENTIAL UNIT ON ANY LOT. IT DOES PROHIBIT SUBSEQUENT CLEARING, GRADING, OR CONSTRUCTION IN THE BUFFER AREA. MAINTENANCE OF RESIDENCES, LANDSCAPING AND UTILITIES IS PERMITTED.

NO.	DESCRIPTION	BY	DATE
Model	Rev	D To A Lot 13	F.C.C. 3/06/92
REVISION			
APPROVED FOR PUBLIC WATER AND PUBLIC SEWERAGE SYSTEMS HOWARD COUNTY HEALTH DEPARTMENT			
		<i>Joyce M. Boyd</i>	11-14-89
APPROVED: HOWARD COUNTY DEPT. OF PLANNING & ZONING			
		<i>James H. Kelly</i>	12/6/89
		<i>Mark J. Taylor</i>	12/1/89
APPROVED FOR PUBLIC WATER AND PUBLIC SEWERAGE STORM DRAINAGE SYSTEMS AND PUBLIC ROADS HOWARD COUNTY DEPARTMENT OF PUBLIC WORKS			
		<i>James H. Kelly</i>	11/6/89
		<i>William B. Reidy</i>	11/2/89

7-13-89
 J.B.

ENGINEER'S CERTIFICATE
 I CERTIFY THAT THIS PLAN FOR EROSION AND SEDIMENT CONTROL REPRESENTS A PRACTICAL AND WORKABLE PLAN BASED ON PERSONAL KNOWLEDGE OF THE SITE CONDITIONS AND THAT IT WAS PREPARED IN ACCORDANCE WITH THE REQUIREMENTS OF THE HOWARD SOIL CONSERVATION DISTRICT.
James H. Kelly
 ENGINEER DATE 11-2-89

DEVELOPER'S CERTIFICATION
 I CERTIFY THAT ALL DEVELOPMENT AND CONSTRUCTION WILL BE DONE ACCORDING TO THIS PLAN OF DEVELOPMENT AND PLAN FOR EROSION AND SEDIMENT CONTROL AND THAT ALL RESPONSIBLE PERSONNEL INVOLVED IN THE CONSTRUCTION PROJECT WILL HAVE A CERTIFICATE OF ATTENDING AT THE DEPARTMENT OF NATURAL RESOURCES APPROVED TRAINING PROGRAM FOR THE CONTROL OF EROSION AND SEDIMENT BEFORE BEGINNING THE PROJECT. I ALSO AUTHORIZE PERIODIC ON-SITE INSPECTIONS BY THE HOWARD SOIL CONSERVATION DISTRICT OR THEIR AUTHORIZED AGENTS, AS ARE DEEMED NECESSARY.
James H. Kelly
 DEVELOPER DATE 11-2-89

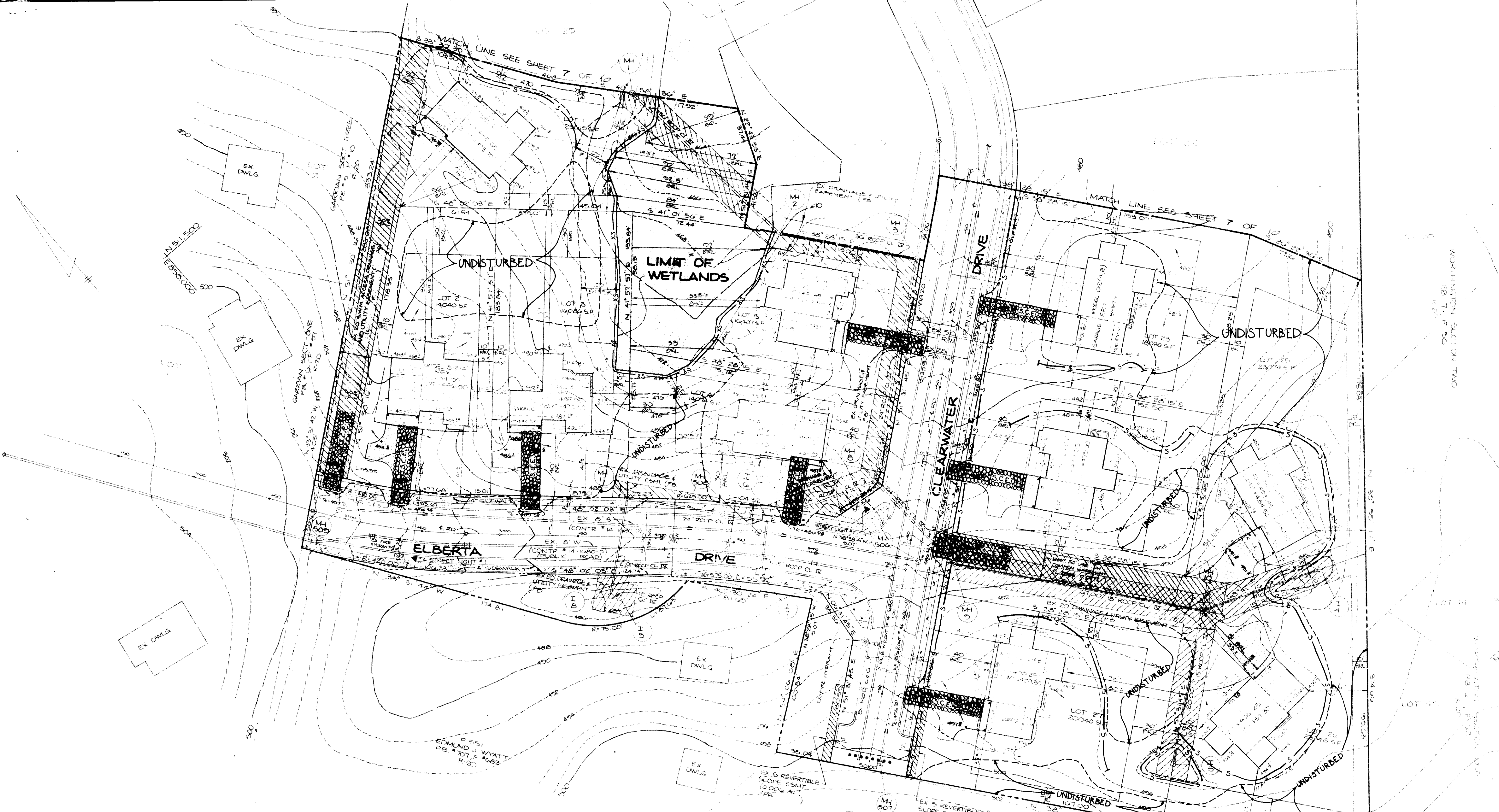
Lot 13 3/6/12
 MOD. REVISION LOT 3



TITLE: SITE DEVELOPMENT PLAN			
PROJECT: BROOKFIELD LOTS 1 THRU 31			
D.P. & Z. FILE NOS. 99-88-87/P-88-23/S-87-88			
TAX MAP: 31, BLOCK: 8, PARCEL: 351			
SECOND ELECTION DISTRICT: HOWARD COUNTY, MD.			
D.P. BY:	DRAWN BY:	CHKD. BY:	DATE:
JTM/BLG	LNC	JTN	SEPT. 1, 1989

OWNER
 CHATEAU HOMES, INC.
 8800 COLUMBIA 100 PARKWAY
 SUITE 100 - COLUMBIA, MD. 21045
 (301) 720-0400

11 WARREN ROAD
 BALTIMORE, MD 21208
 (301) 484-4100
DST&A
 ASSOC. INC.



NOTE:
 THE PURPOSE OF THIS PLAN IS FOR SEDIMENT & EROSION CONTROL ONLY. FOR CONSTRUCTION USE PLAN SHEET 2 OF 10

NO.	DESCRIPTION	BY	DATE
REVISION			
APPROVED FOR PUBLIC WATER AND PUBLIC SEWERAGE SYSTEMS HOWARD COUNTY HEALTH DEPARTMENT			
			11-14-89
APPROVED: HOWARD COUNTY DEPT. OF PLANNING & ZONING			
			12/8/89
APPROVED FOR PUBLIC WATER AND PUBLIC SEWERAGE HOWARD COUNTY DEPARTMENT OF PUBLIC WORKS			
			1/1/90

APPROVED
 DIVISION OF
 COMMUNITY PLANNING
 & LAND DEVELOPMENT
 HOWARD COUNTY,
 MARYLAND
 DATE: 7-17-89

ENGINEER'S CERTIFICATION
 I CERTIFY THAT THIS PLAN FOR SEDIMENT AND EROSION CONTROL, RETENTION & TREATMENT AND NOISE ABATEMENT PLAN, BASED ON PERSONAL KNOWLEDGE OF THE SITE CONDITIONS AND THAT IT WAS PREPARED IN ACCORDANCE WITH THE REQUIREMENTS OF THE HOWARD SOIL CONSERVATION DISTRICT.
Wang F. Smith 10-2-89
 ENGINEER DATE

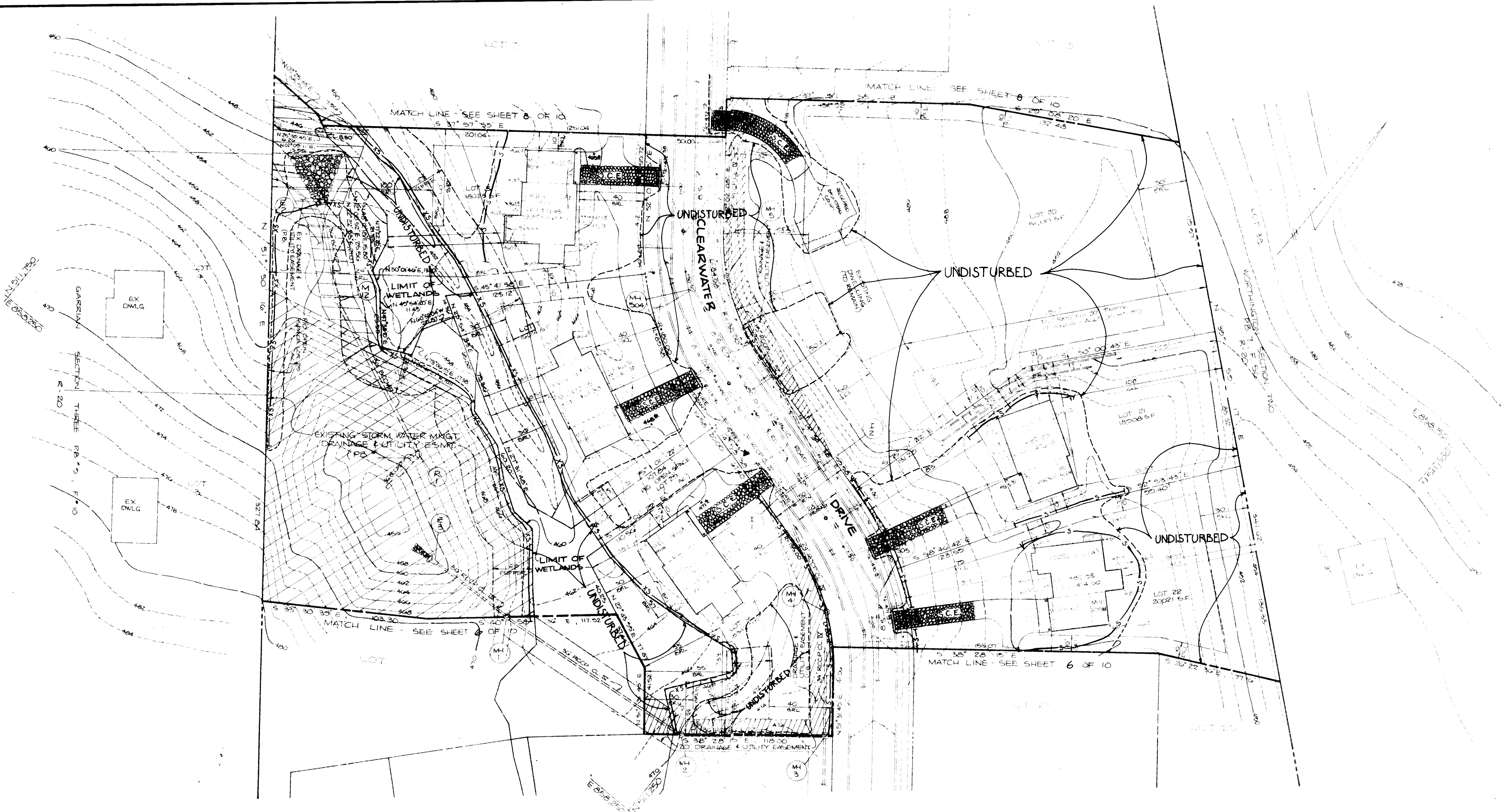
DEVELOPER'S CERTIFICATION
 I CERTIFY THAT ALL DEVELOPMENT AND CONSTRUCTION WILL BE DONE ACCORDING TO THIS PLAN FOR SEDIMENT AND EROSION CONTROL AND RETENTION AND TREATMENT AND NOISE ABATEMENT PLAN. I HAVE OBTAINED ALL NECESSARY PERMITS AND APPROVALS FROM THE APPROPRIATE AGENCIES AND I AM RESPONSIBLE FOR THE PROTECTION OF THE SITE FROM EROSION AND SEDIMENTATION THROUGHOUT THE CONSTRUCTION PERIOD. I ALSO AUTHORIZE PERIODIC ON-SITE INSPECTIONS BY THE HOWARD SOIL CONSERVATION DISTRICT ON THEIR AUTHORIZED AREAS, AS ARE DETAILED.
Samuel A. Azar 10-3-89
 DEVELOPER DATE

Approved for **HOWARD** S.C.D.
 and State Technical Requirements
 Date 10/2/89
 Signature
 U.S. Soil Conservation Service

THIS DEVELOPMENT PLAN IS APPROVED FOR SEDIMENT AND EROSION CONTROL BY THE HOWARD SOIL CONSERVATION DISTRICT.
 Approved *John A. Holt* Date 10/27/89
 Howard S.C.D.

OWNER
 CHATEAU HOMES, INC.
 8000 COLUMBIA VALLEY PKWY.
 SUITE 100
 COLUMBIA, MD. 21045
 (301) 720-0400

	TITLE: SEDIMENT CONTROL PLAN		
	PROJECT: BROOKFIELD LOT 1 TRW 31		
D.P.&Z. FILE NO.: 89-21-177-22-22/2-27-89 1-89-27		11 WARREN ROAD BALTIMORE, MD. 21208 (301) 484-4188	
TAX MAP: 31, BLOCK: 8, PARCEL: 381		SCALE: 1"=30'	
SECOND ELECTION DISTRICT: HOWARD COUNTY, MD.		SHEET 4 OF 10	
DES. BY: JTW/MLC	DRAWN BY: JTW	CHKD. BY: JTW	DATE: SEPT. 1989



NOTE:
 THE PURPOSE OF THIS PLAN IS FOR
 SEDIMENT & EROSION CONTROL ONLY.
 FOR CONSTRUCTION, USE PLAN SHEET 3 OF 10.

Approved for Howard S.C.D.
[Signature]
 U.S. DEPARTMENT OF AGRICULTURE
 CONSERVATION DISTRICT

THIS DEVELOPMENT SHALL BE APPROVED
 FOR SOIL EROSION AND SEDIMENT
 CONTROL BY THE HOWARD SOIL
 CONSERVATION DISTRICT.
 Approved *[Signature]*
 Howard S.C.D.

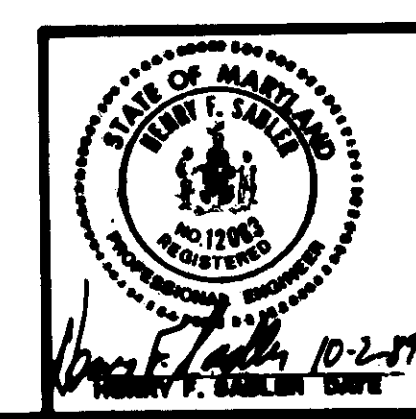
OWNER
 CHATEAU HOMES, INC.
 8800 COLUMBIA 100 PKWY.
 SUITE 100
 COLUMBIA, MD 21045
 (301) 780-0400

NO.	DESCRIPTION	BY	DATE
REVISION			
	APPROVED FOR PUBLIC WATER AND PUBLIC SEWERAGE SYSTEMS HOWARD COUNTY HEALTH DEPARTMENT	<i>[Signature]</i>	11-14-87
	APPROVED: HOWARD COUNTY DEPT. OF PLANNING & ZONING	<i>[Signature]</i>	12/8/87
	APPROVED FOR PUBLIC WATER AND PUBLIC SEWERAGE SYSTEMS BRANCHES AND PUBLIC ROADS HOWARD COUNTY DEPARTMENT OF PUBLIC WORKS	<i>[Signature]</i>	12/14/87

DEPARTMENT OF
 COMMUNITY PLANNING
 & LAND DEVELOPMENT
 HOWARD COUNTY,
 MARYLAND
 DATE: 7-13-89

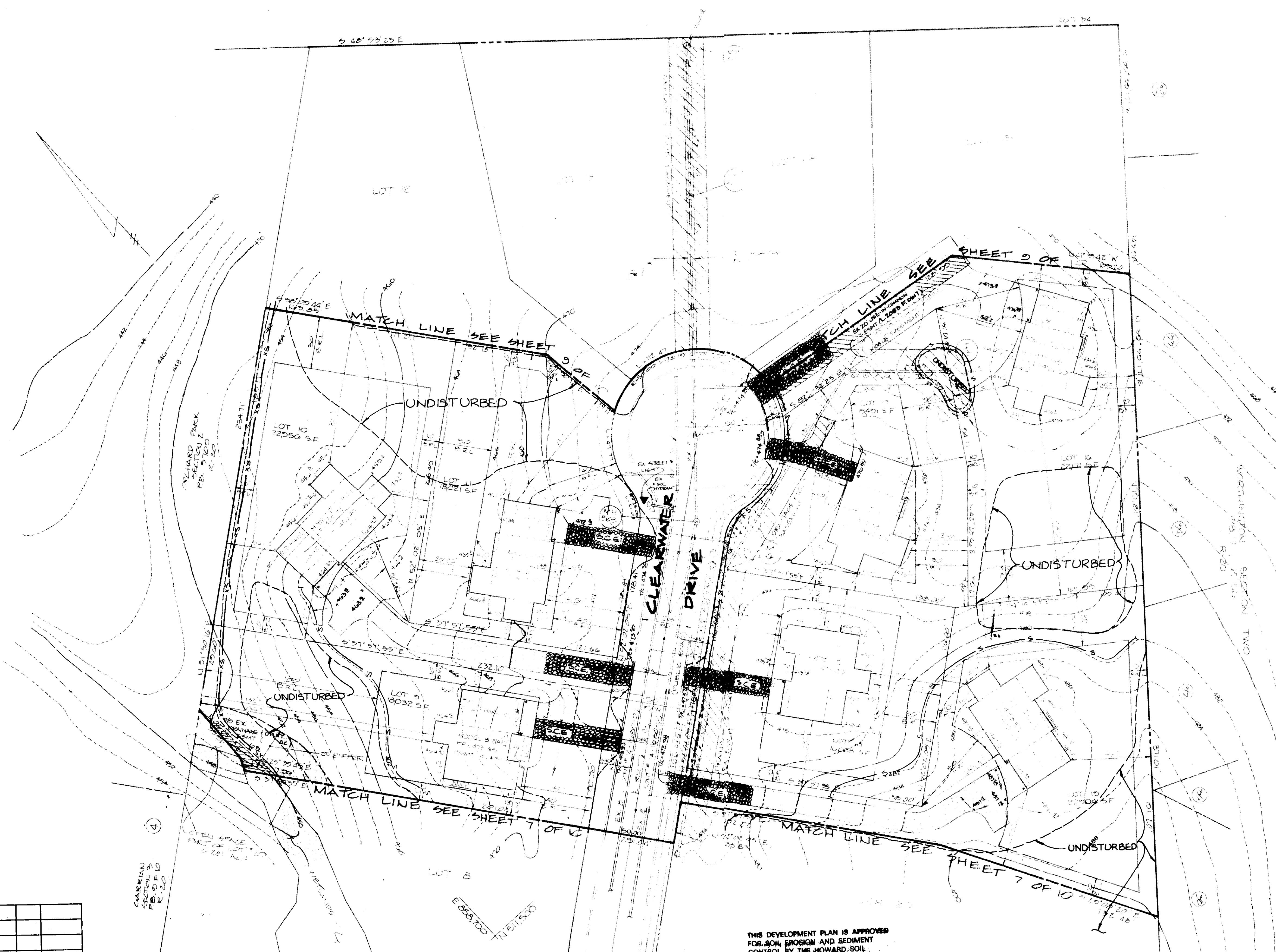
ENGINEER'S CERTIFICATION
 I CERTIFY THAT THIS PLAN FOR EROSION AND SEDIMENT CONTROL
 REPRESENTS A PRACTICAL AND FEASIBLE PLAN BASED ON PERSONAL
 KNOWLEDGE OF THE SITE CONDITIONS AND THAT IT WAS PREPARED IN
 ACCORDANCE WITH THE REQUIREMENTS OF THE HOWARD SOIL
 CONSERVATION DISTRICT.
[Signature] 10-2-87
 ENGINEER DATE

DEVELOPER'S CERTIFICATION
 I CERTIFY THAT ALL DEVELOPMENT AND CONSTRUCTION WILL BE DONE
 ACCORDING TO THIS PLAN OF DEVELOPMENT AND PLAN FOR EROSION AND
 SEDIMENT CONTROL AND THAT ALL RESPONSIBLE PERSONNEL INVOLVED IN
 THE CONSTRUCTION PROJECT WILL HAVE A CERTIFICATE OF ATTENDANCE
 AT THE DEPARTMENT OF NATURAL RESOURCES APPROVED TRAINING
 PROGRAM FOR THE CONTROL OF SEDIMENT AND EROSION BEFORE
 BEGINNING THE PROJECT. I ALSO AUTHORIZE PRELIMINARY ON-SITE
 INSPECTIONS BY THE HOWARD SOIL CONSERVATION DISTRICT OR THEIR
 AUTHORIZED AGENTS, AS ARE DEEMED NECESSARY.
[Signature] 10-3-89
 DEVELOPER DATE



TITLE: SEDIMENT CONTROL PLAN		CIVIL ENGINEERS - SITE PLANNERS SURVEYORS	
PROJECT: BROOKFIELD LOTS 1 THRU 31		DST & A Inc.	
D.P.R. FILE NO.: SP-88-87P-88-23/S-87-86-80-01			
TAX MAP: 31, BLOCK: 8, PARCEL: 381		11 WARREN ROAD	
SECOND ELECTION DISTRICT: HOWARD COUNTY, MD.		BALTIMORE, MD 21208	
DES. BY: JTW/MLC	DRAWN BY: LNC	CHKD. BY: JTN	DATE: SEPT., 1989
SCALE: 1" = 30'		SHEET 7 OF 10	

N 312 000
E 122 500



NOTE:
THE PURPOSE OF THIS PLAN IS FOR SEDIMENT &
EROSION CONTROL ONLY. FOR CONSTRUCTION,
USE PLAN SHEET 4 OF 10.

THIS DEVELOPMENT PLAN IS APPROVED
FOR EROSION AND SEDIMENT
CONTROL BY THE HOWARD SOIL
CONSERVATION DISTRICT

NO.	DESCRIPTION	BY	DATE
REVISION			

APPROVED FOR PUBLIC WATER AND PUBLIC SEWERAGE SYSTEMS
HOWARD COUNTY HEALTH DEPARTMENT
James M. ... 11-14-89
Date

APPROVED: HOWARD COUNTY DEPT. OF PLANNING & ZONING
James ... 12/2/89
Date
... 12/15/89
Date

APPROVED FOR PUBLIC WATER AND PUBLIC SEWERAGE
STORM DRAINAGE SYSTEMS AND PUBLIC ROADS
HOWARD COUNTY DEPARTMENT OF PUBLIC WORKS
... 11/16/89
Date

APPROVED
DIVISION OF
COMMUNITY PLANNING
& LAND DEVELOPMENT
HOWARD COUNTY,
MARYLAND
DATE **7-13-89**

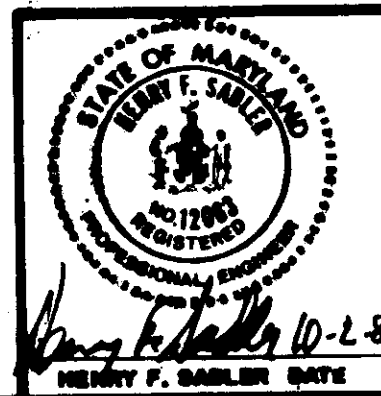
ENGINEER'S CERTIFICATION
I CERTIFY THAT THIS PLAN FOR EROSION AND SEDIMENT CONTROL REPRESENTS A PRACTICAL AND FEASIBLE PLAN BASED ON PERSONAL KNOWLEDGE OF THE SITE CONDITIONS AND THAT IT WAS PREPARED IN ACCORDANCE WITH THE REQUIREMENTS OF THE HOWARD SOIL CONSERVATION DISTRICT.
Henry F. ... 10-2-89
ENGINEER DATE

DEVELOPER'S CERTIFICATION
I CERTIFY THAT ALL DEVELOPMENT AND CONSTRUCTION WILL BE DONE ACCORDING TO THIS PLAN OF DEVELOPMENT AND PLAN FOR EROSION AND SEDIMENT CONTROL AND THAT ALL RESPONSIBLE PERSONNEL INVOLVED IN THE CONSTRUCTION PROJECT WILL HAVE A CERTIFICATE OF ATTENDANCE AT THE DEPARTMENT OF NATURAL RESOURCES APPROVED TRAINING PROGRAM FOR THE CONTROL OF EROSION AND SEDIMENT BEFORE BEGINNING THE PROJECT. I ALSO APPROVE THE PHOTIC OR SITE INSPECTIONS BY THE HOWARD SOIL CONSERVATION DISTRICT OR THEIR AUTHORIZED AGENTS AS ARE DEEMED NECESSARY.
... 10-3-89
DEVELOPER DATE

THIS DEVELOPMENT PLAN IS APPROVED
FOR 40% EROSION AND SEDIMENT
CONTROL BY THE HOWARD SOIL
CONSERVATION DISTRICT
Approved *J. ...* Date 10/27/89
Howard & C.D.

Revised per *Hastad* S.C.D.
... Date 10/27/89
U.S. Soil Conservation Service

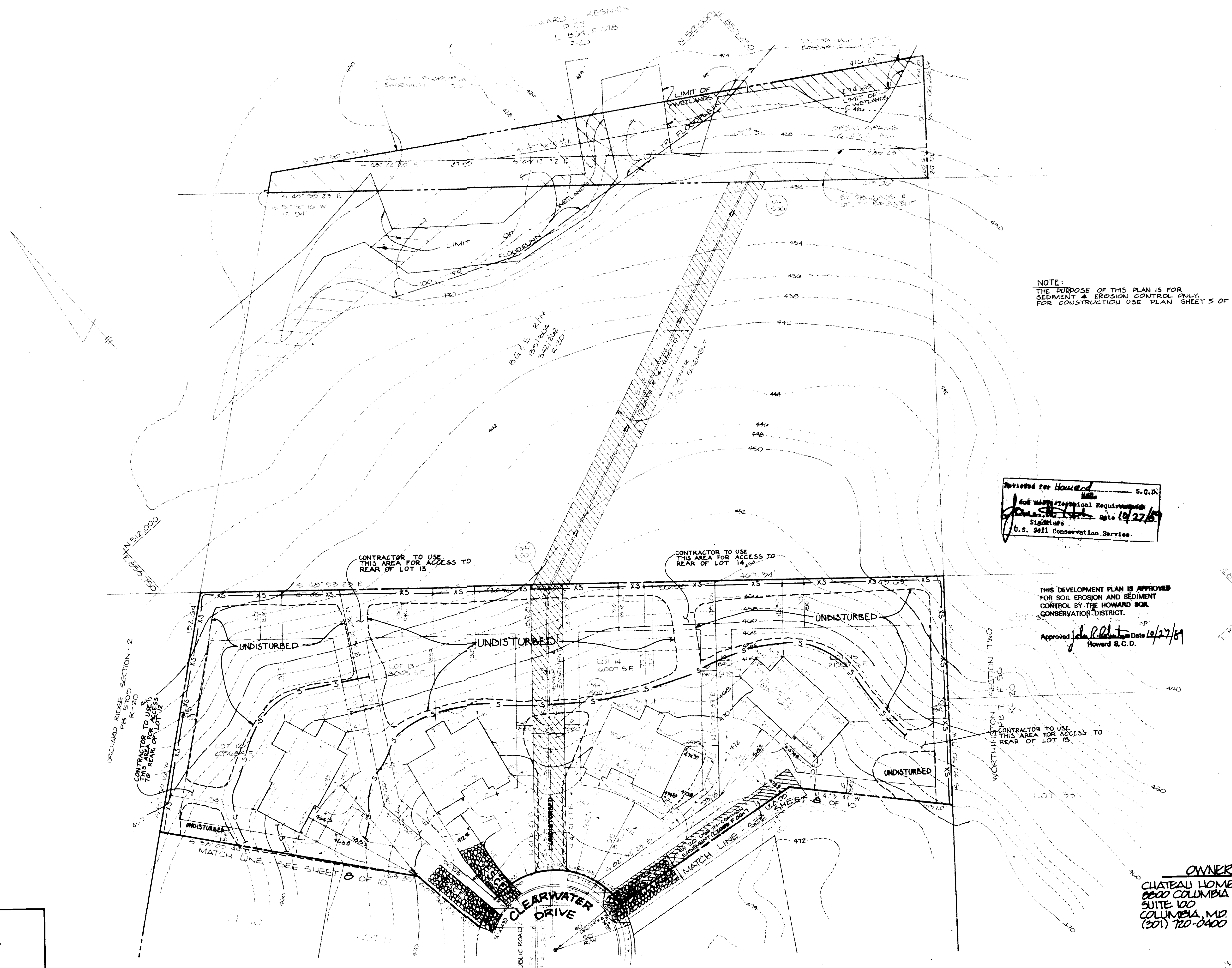
OWNER
CHATEAU HOMES, INC.
8800 COLUMBIA 100 PARKWAY
SUITE 100 • COLUMBIA, MD. 21045
(301) 720-0400



TITLE: **SEDIMENT CONTROL PLAN**
PROJECT: **BROOKFIELD LOTS 1 THRU 31**
D.P.S.Z. FILE NOS.: GP-88-87P-88-22/8-87-88/F-88
TAX MAP: 31, BLOCK: 8, PARCEL: 387
SECOND ELECTION DISTRICT: HOWARD COUNTY, MD.
DES. BY: JTR/WLC DRAWN BY: LNC CHKD. BY: JTR DATE: SEPT. 1989

Civil Engineers - Site Planners
Surveyors
DST&A Inc.
11 WARREN ROAD
BALTIMORE, MD. 21208
(301) 484-6100
SCALE: 1" = 50' SHEET 5 OF 10

SDP-89-175



NOTE:
 THE PURPOSE OF THIS PLAN IS FOR
 SEDIMENT & EROSION CONTROL ONLY.
 FOR CONSTRUCTION USE PLAN SHEET 5 OF 10.

Approved for Howard
 S.C.D.
 and all other regulatory requirements
 Date 10/27/89
 Signature
 U.S. Soil Conservation Service.

THIS DEVELOPMENT PLAN IS APPROVED
 FOR SOIL EROSION AND SEDIMENT
 CONTROL BY THE HOWARD SOIL
 CONSERVATION DISTRICT.
 Approved [Signature] Date 10/27/89
 Howard & C.D.

OWNER
 CHATEAU HOMES, INC.
 6600 COLUMBIA 100 PKWY.
 SUITE 100
 COLUMBIA, MD 21045
 (301) 720-0400

NO.	DESCRIPTION	BY	DATE
REVISION			
	APPROVED FOR PUBLIC WATER AND PUBLIC SEWERAGE SYSTEMS HOWARD COUNTY HEALTH DEPARTMENT		
	APPROVED: HOWARD COUNTY DEPT. OF PLANNING & ZONING		
	APPROVED FOR PUBLIC WATER AND PUBLIC SEWERAGE HOWARD COUNTY DEPARTMENT OF PUBLIC WORKS		

APPROVED
 DIVISION OF
 COMMUNITY PLANNING
 & LAND DEVELOPMENT
 HOWARD COUNTY,
 MARYLAND
 DATE 7-18-89

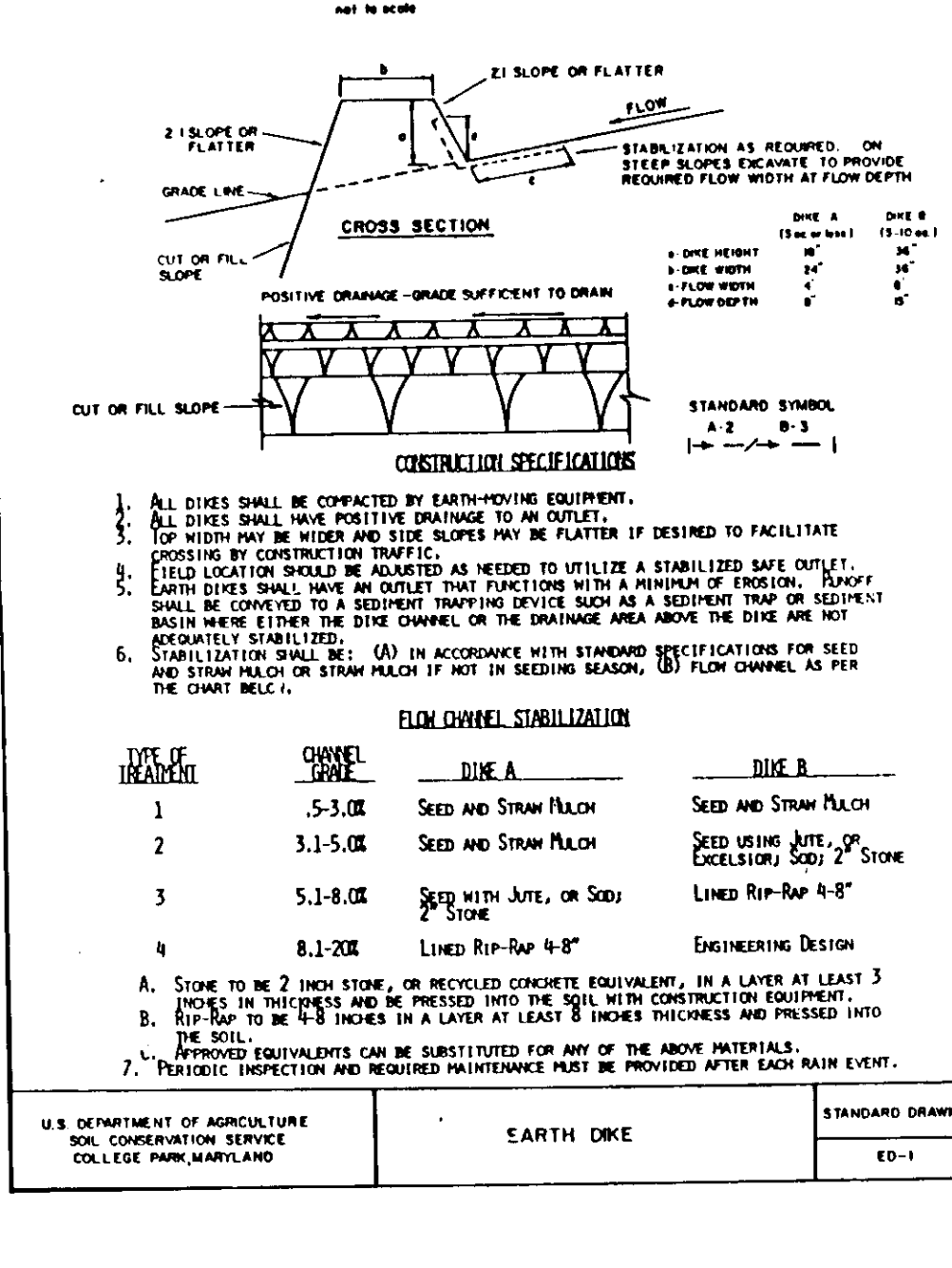
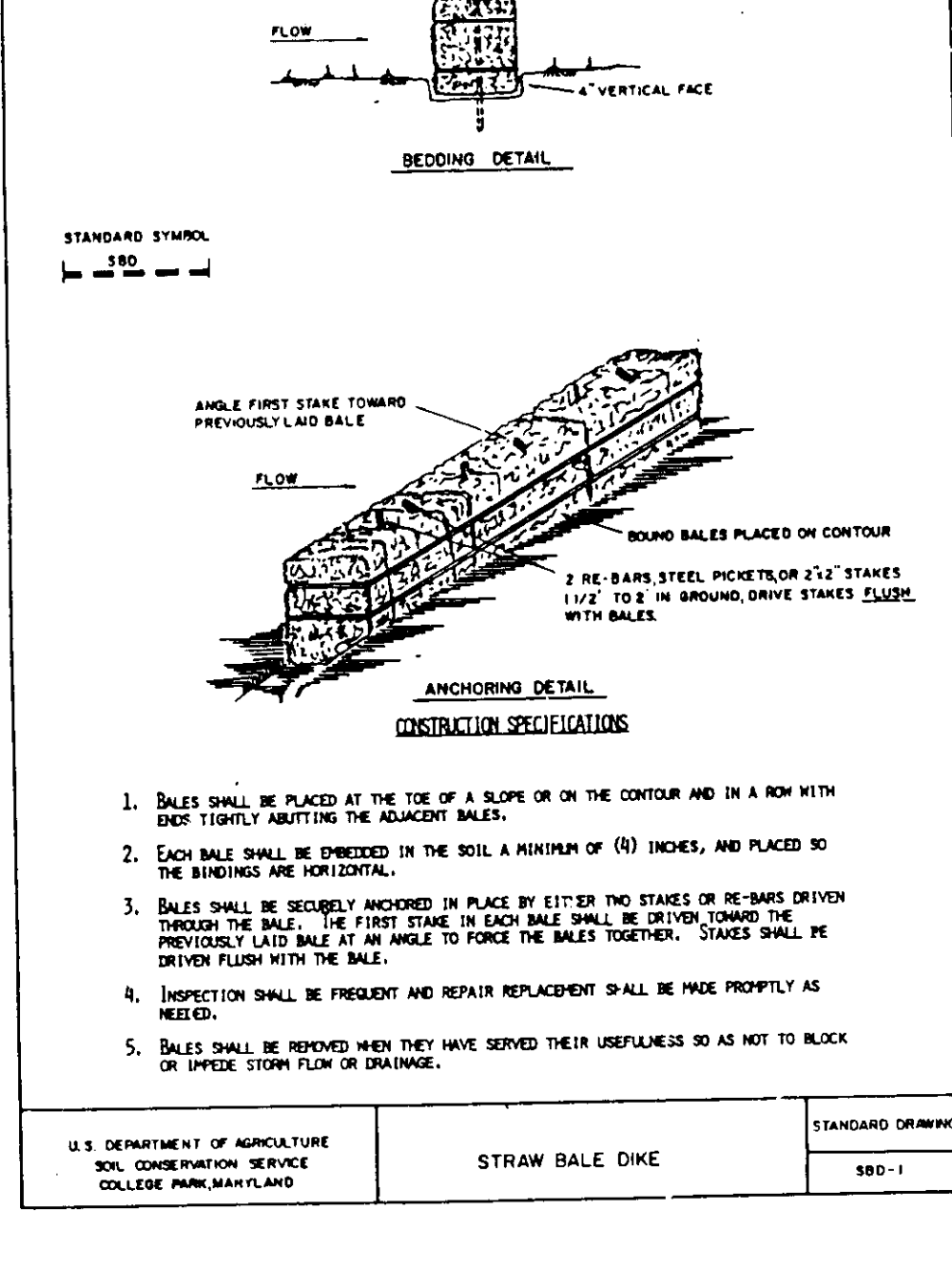
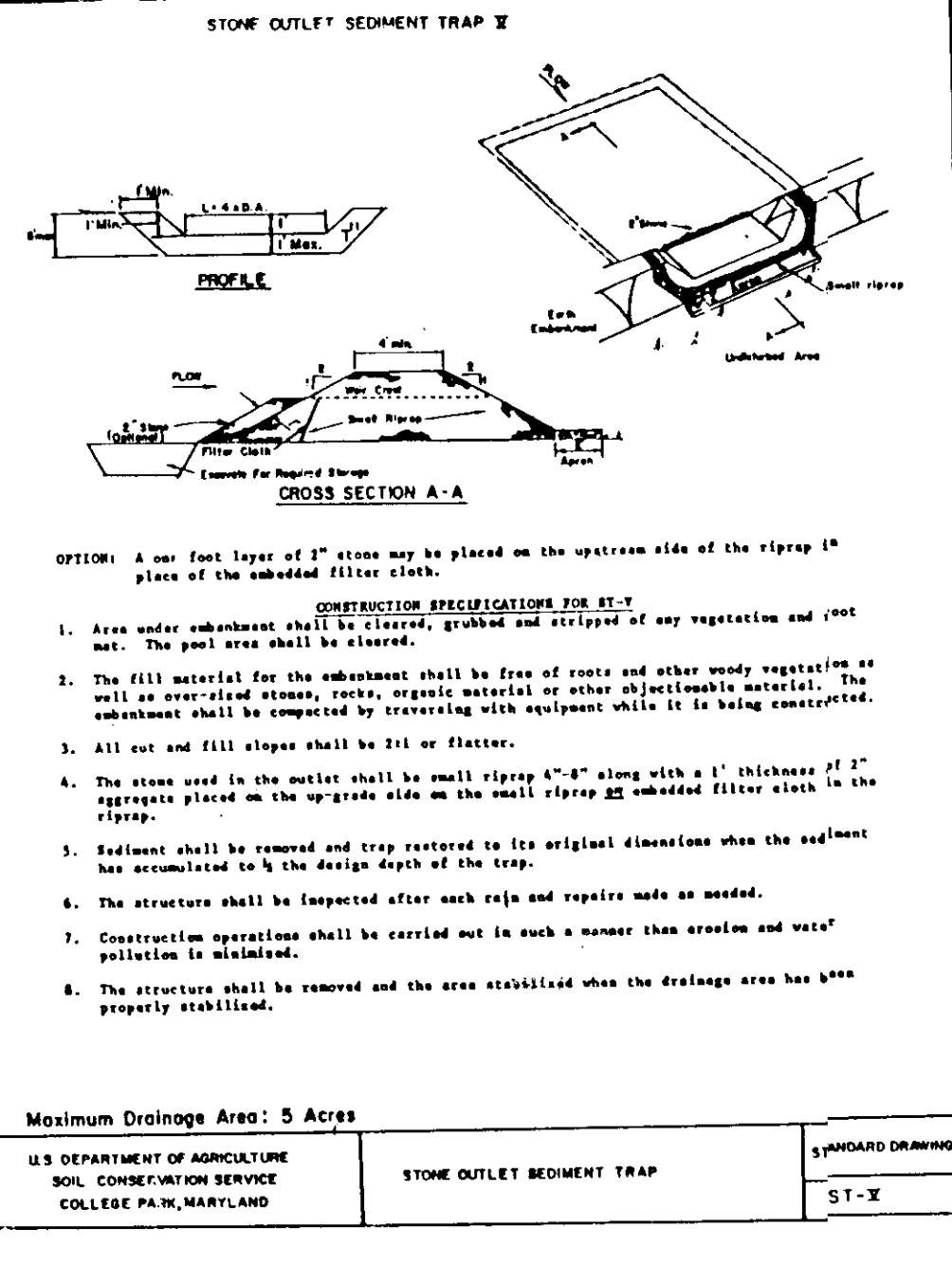
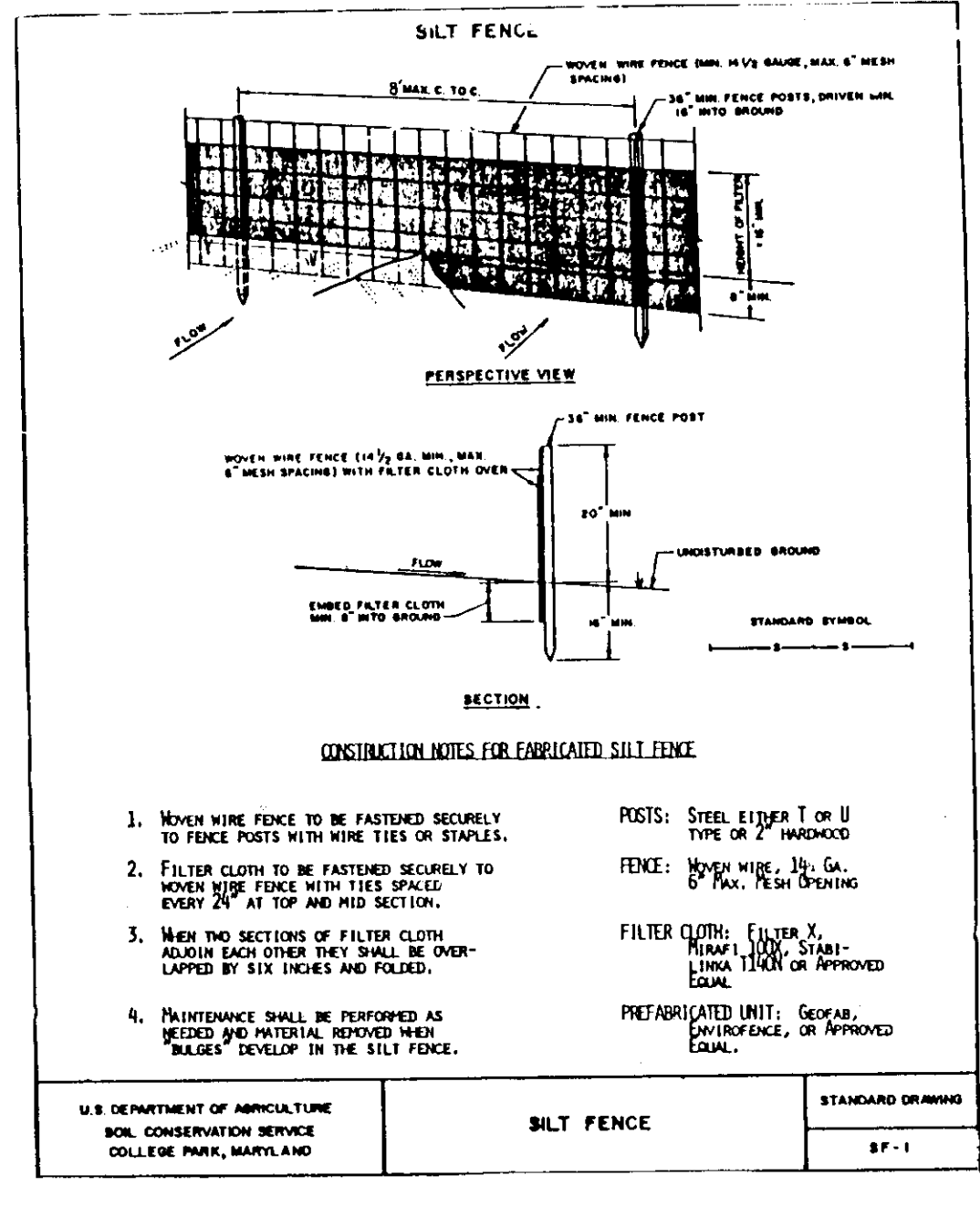
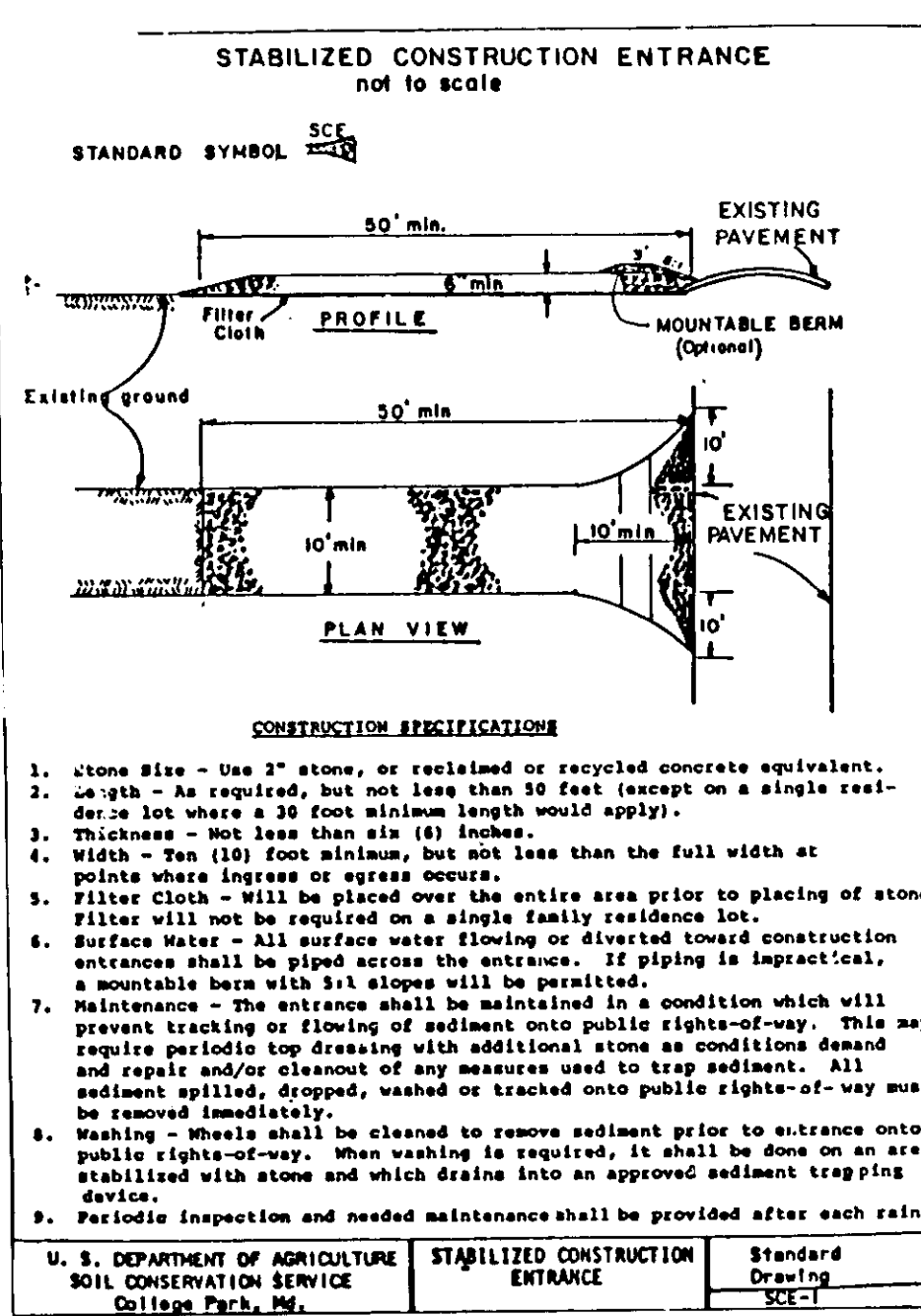
ENGINEER'S CERTIFICATION
 I CERTIFY THAT THIS PLAN FOR EROSION AND SEDIMENT CONTROL
 REPRESENTS A PRACTICAL AND WORKABLE PLAN BASED ON PERSONAL
 KNOWLEDGE OF THE SITE CONDITIONS AND THAT IT WAS PREPARED IN
 ACCORDANCE WITH THE REQUIREMENTS OF THE HOWARD SOIL
 CONSERVATION DISTRICT.
 [Signature] DATE 10-2-89
 ENGINEER

DEVELOPER'S CERTIFICATION
 I CERTIFY THAT ALL DEVELOPMENT AND CONSTRUCTION WILL BE DONE
 ACCORDING TO THIS PLAN OF DEVELOPMENT AND PLAN FOR EROSION AND
 SEDIMENT CONTROL, AND THAT ALL RESPONSIBLE PERSONNEL INVOLVED IN
 THE CONSTRUCTION PROJECT WILL HAVE A CERTIFICATE OF ATTENDANCE
 AT THE DEPARTMENT OF NATURAL RESOURCES APPROVED TRAINING
 PROGRAM FOR THE CONTROL OF SEDIMENT AND EROSION BEFORE
 BEGINNING THE PROJECT. I ALSO APPROVE PERIODIC ON-SITE
 INSPECTIONS BY THE HOWARD SOIL CONSERVATION DISTRICT OR THEIR
 AUTHORIZED AGENTS, WHEN DEEMED NECESSARY.
 [Signature] DATE 10-3-89
 DEVELOPER



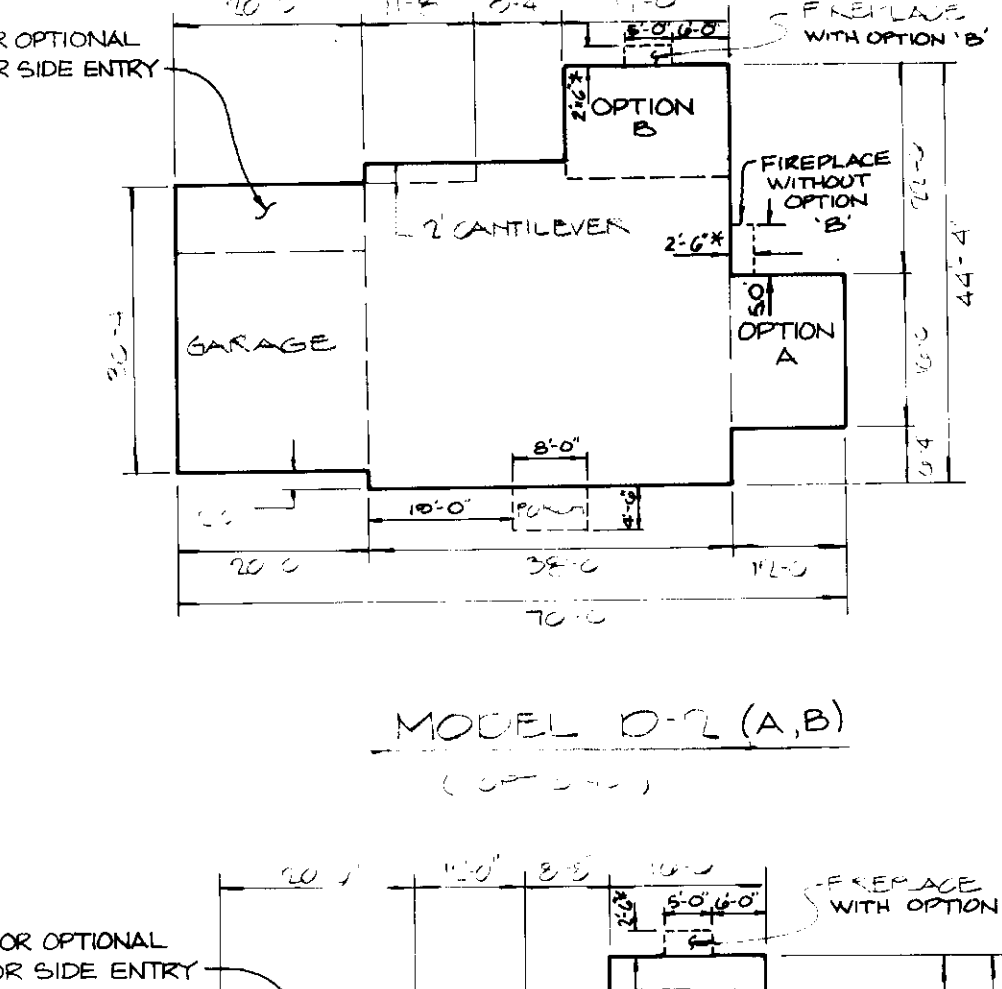
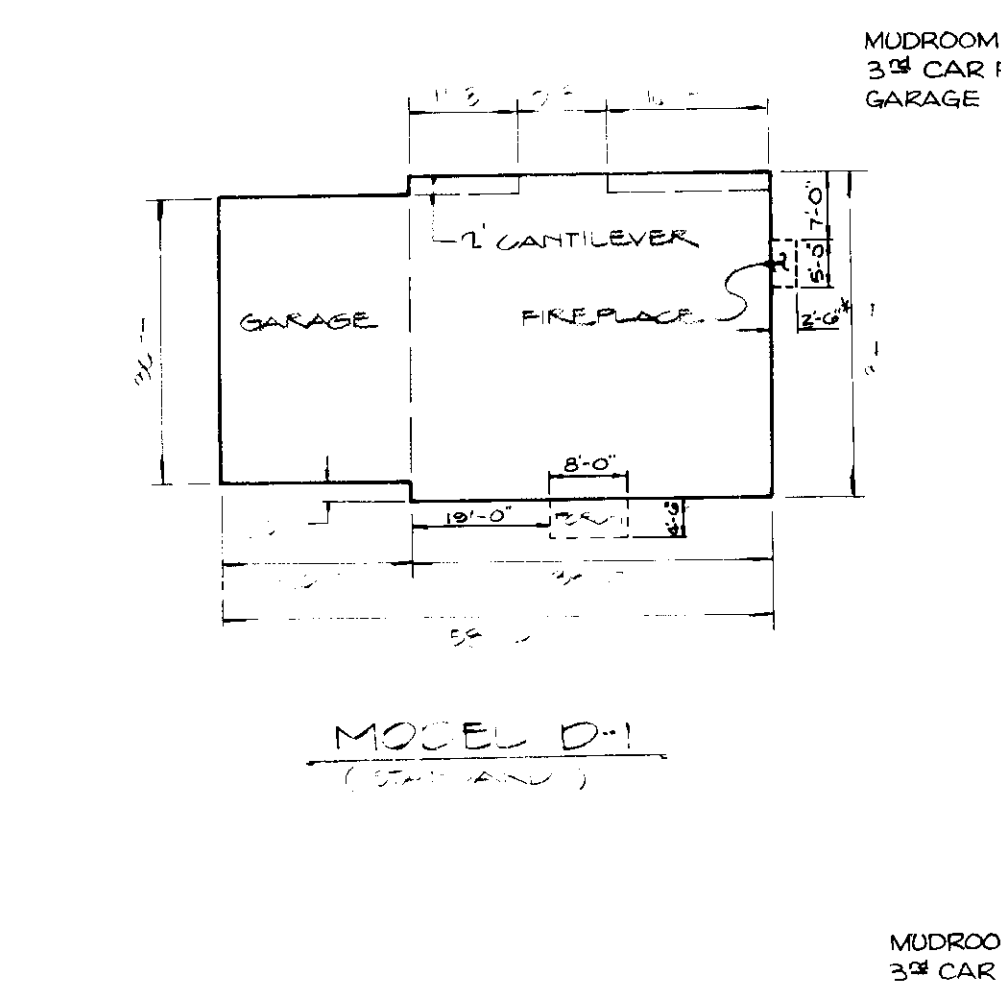
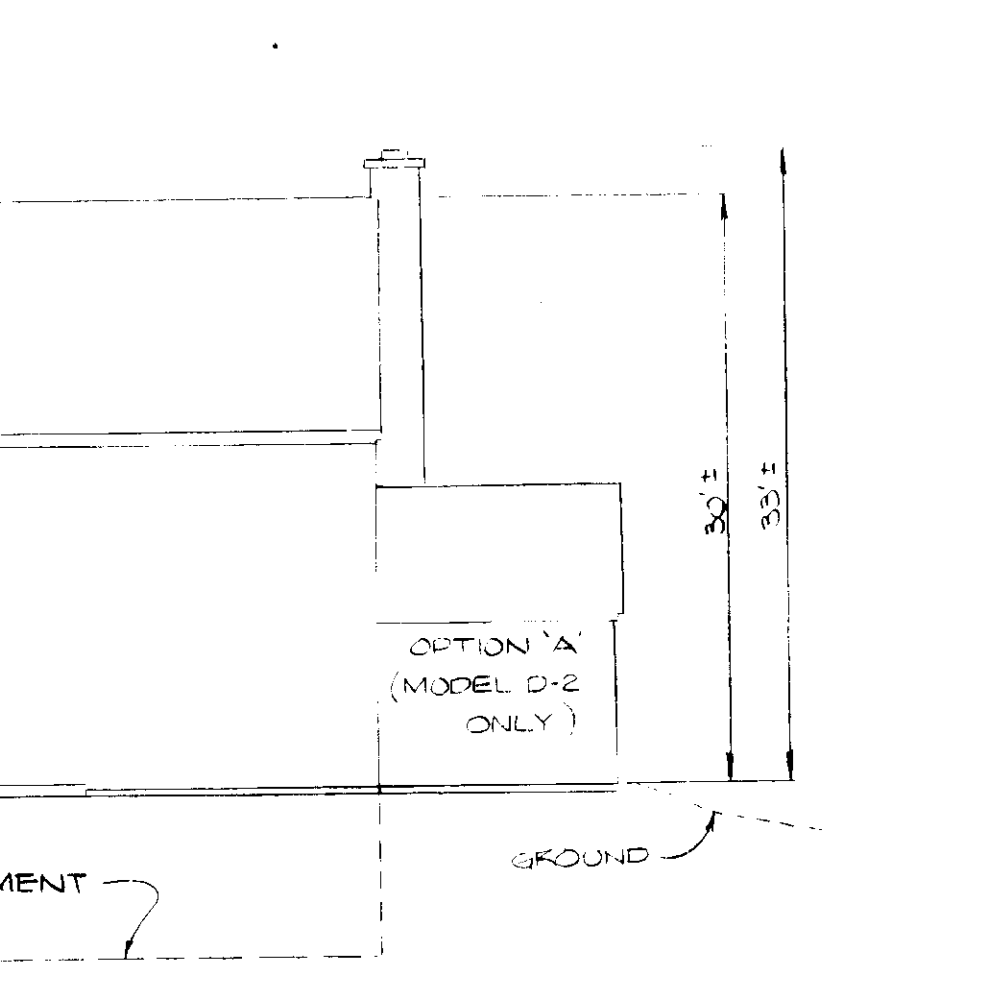
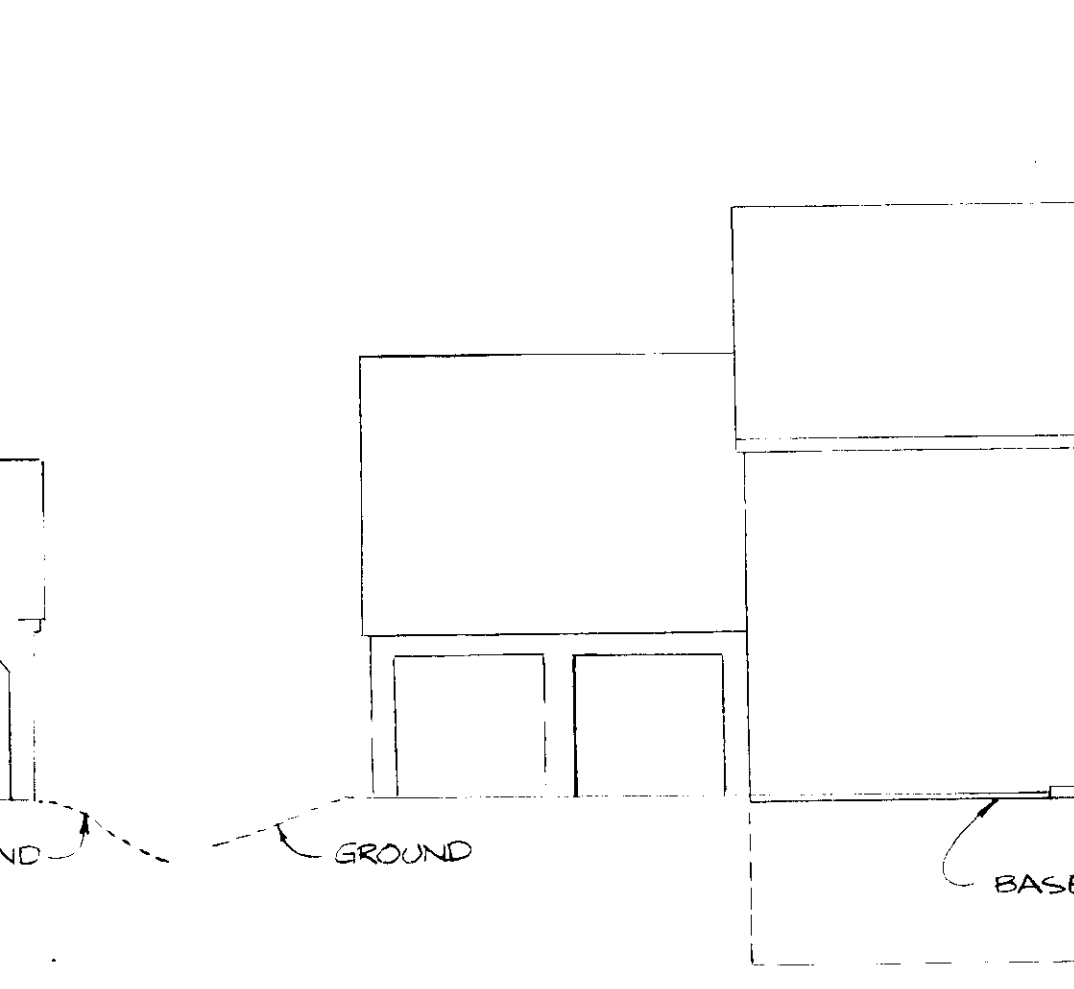
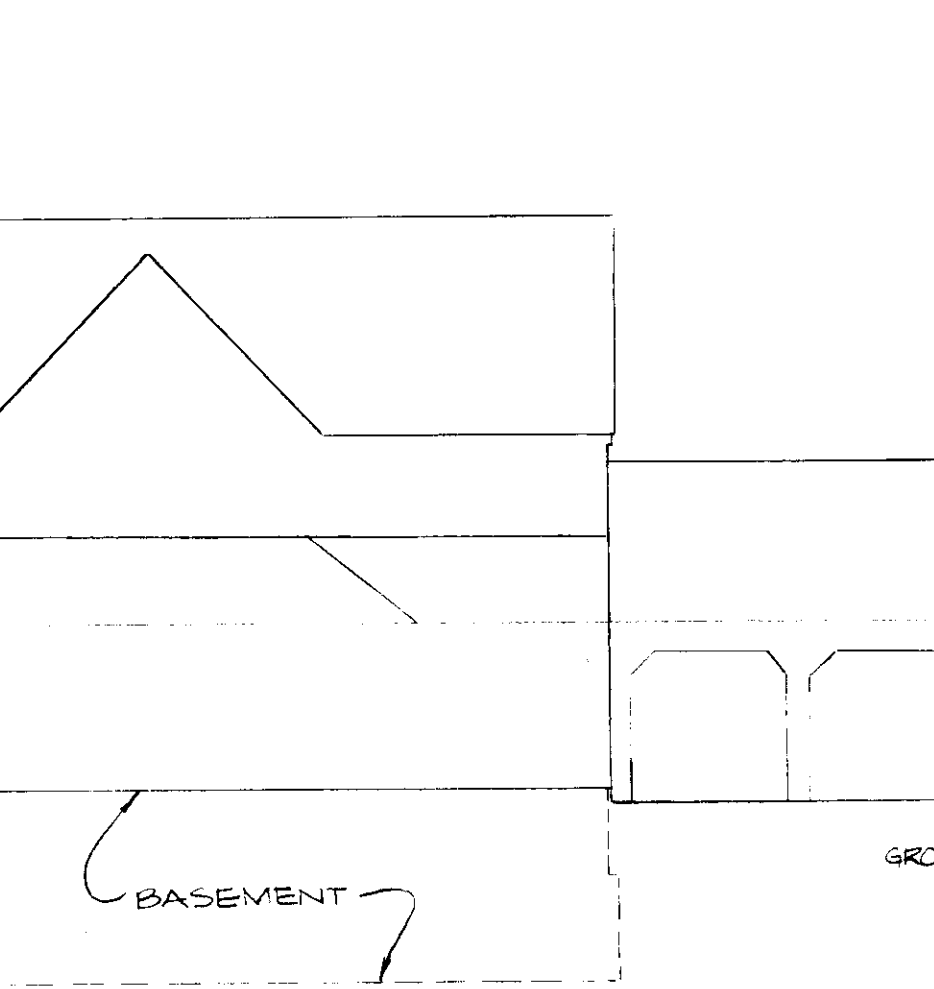
TITLE: SEDIMENT CONTROL PLAN
 PROJECT: BROOKFIELD
 LOTS 1 THRU 31
 D.P. & Z. FILE NOS.: GP-88-877-88-23/8-87-88 (4 of 9)
 TAX MAP: 31, BLOCK: 8, PARCEL: 381
 SECOND ELECTION DISTRICT: HOWARD COUNTY, MD.
 DES. BY: [Signature] LNC
 DRAWN BY: [Signature] LNC
 CHKD. BY: [Signature] JTM
 DATE: SEPT. 1989

CIVIL ENGINEERS - SITE PLANNERS
 SURVEYORS
DST&A Inc.
 11 WARREN ROAD
 BALTIMORE, MD 21206
 (301) 484-4100
 SCALE: 1" = 50'
 SHEET 5 OF 10



SEDIMENT CONTROL NOTES

1. A minimum of 24 hours notice must be given to the Howard County Office of Inspection and Permits prior to the start of any construction. (992-2437).
2. All vegetative and structural practices are to be installed according to the provisions of this Plan and are to be in conformance with the 1983 MARYLAND STANDARDS AND SPECIFICATIONS FOR SOIL EROSION AND SEDIMENT CONTROL.
3. Following initial soil disturbance or redistribution, within (7) calendar days for all perimeter sediment control structures, dikes, perimeter slopes and all slopes greater than 3:1, (7) 14 days for all other disturbed or graded areas on the project site.
4. All sediment traps/basins shown must be fenced and warning signs posted around their perimeter in accordance with Vol. 1, Chapter 12, of the HOWARD COUNTY DESIGN MANUAL, Storm Drainage.
5. All disturbed areas must be stabilized within the time period specified above in accordance with the 1983 MARYLAND STANDARDS AND SPECIFICATIONS FOR SOIL EROSION AND SEDIMENT CONTROL for permanent seedings (Sec. 51) and (Sec. 54), temporary seedings (Sec. 50) and mulching (Sec. 52). Temporary stabilization with mulch alone can only be done when recommended seeding dates do not allow for proper germination and establishment of grasses.
6. All sediment control structures are to remain in place and are to be maintained in operative condition until permission for their removal has been obtained from the Howard County Sediment Control Inspector.
7. Site Analysis:
 - Total Area of Site: 15.6 Acres
 - Area Disturbed: 2.8 Acres
 - Area to be roofed or paved: 2.8 Acres
 - Area to be vegetatively stabilized: 5.6 Acres
 - Total Cut: 1.2 Cu. Yds.
 - Total Fill: 1.2 Cu. Yds.
 - Off-site waste/borrow location: N/A
8. Any sediment control practice which is disturbed by grading activity for placement of utilities must be repaired on the same day of disturbance.
9. Additional sediment control measures shall be provided, if deemed necessary by the Howard County DPW sediment control inspector.
10. On all sites with disturbed areas in excess of 2 acres, approval of the inspection agency shall be requested upon completion of installation of perimeter erosion and sediment controls, but before proceeding with any other earth disturbance or grading. Other building or grading inspection approvals may not be authorized until this initial approval by the inspection agency is made.



PERMANENT SEEDING NOTES

Apply to graded or cleared areas not subject to immediate further disturbance where a permanent long-lived vegetative cover is needed.

Seeding Instructions: Loosen upper three inches of soil by raking, discing or other acceptable means before seeding if not previously loosened.

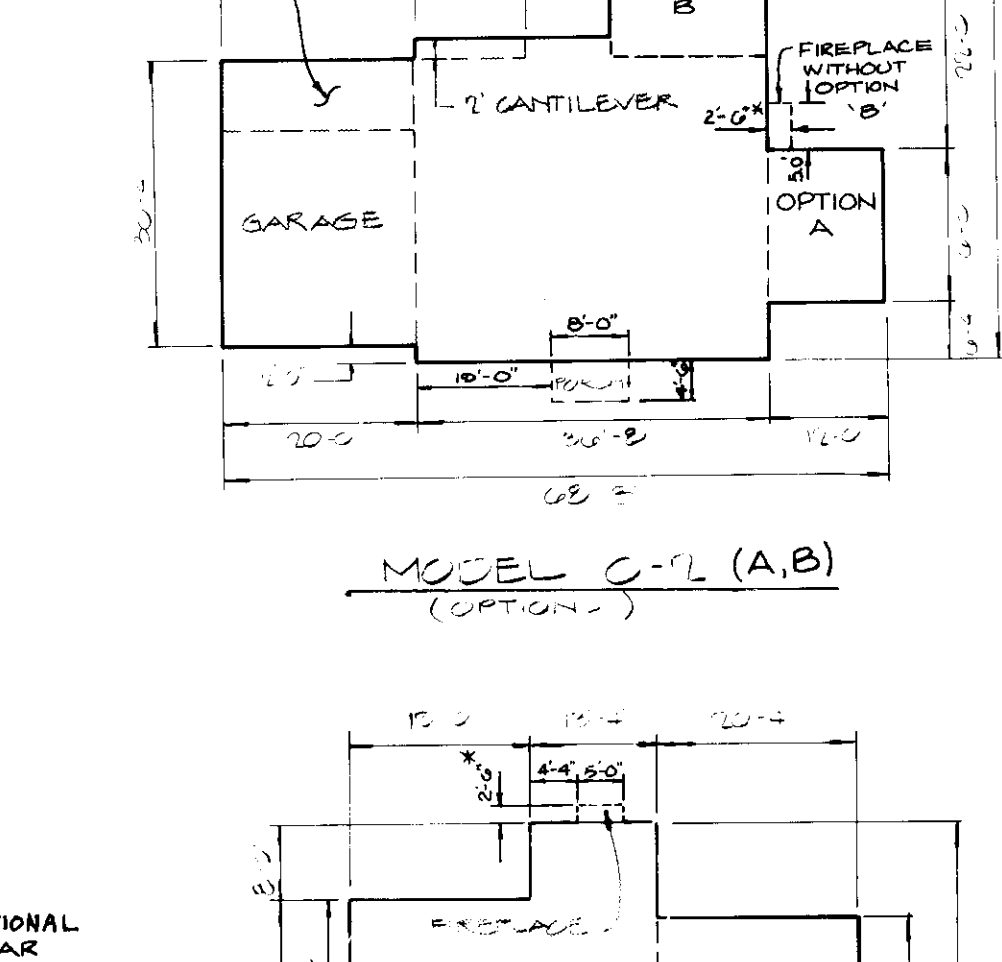
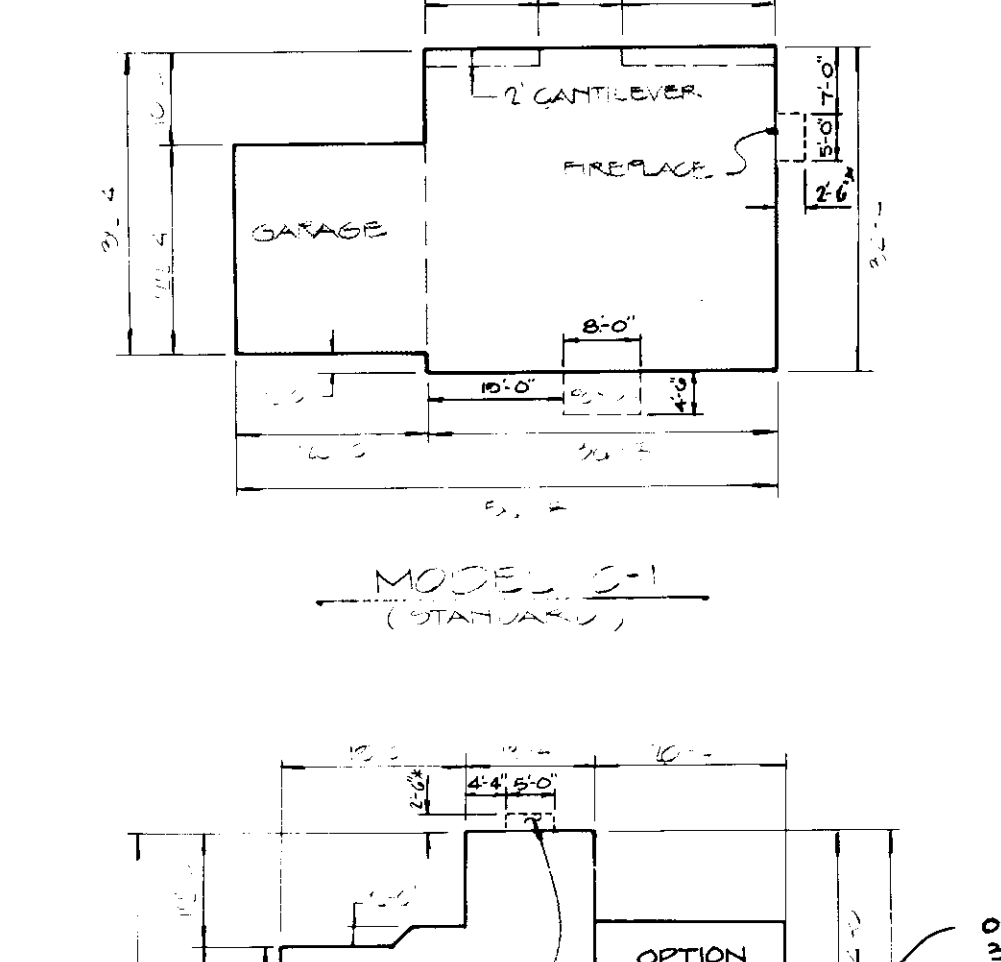
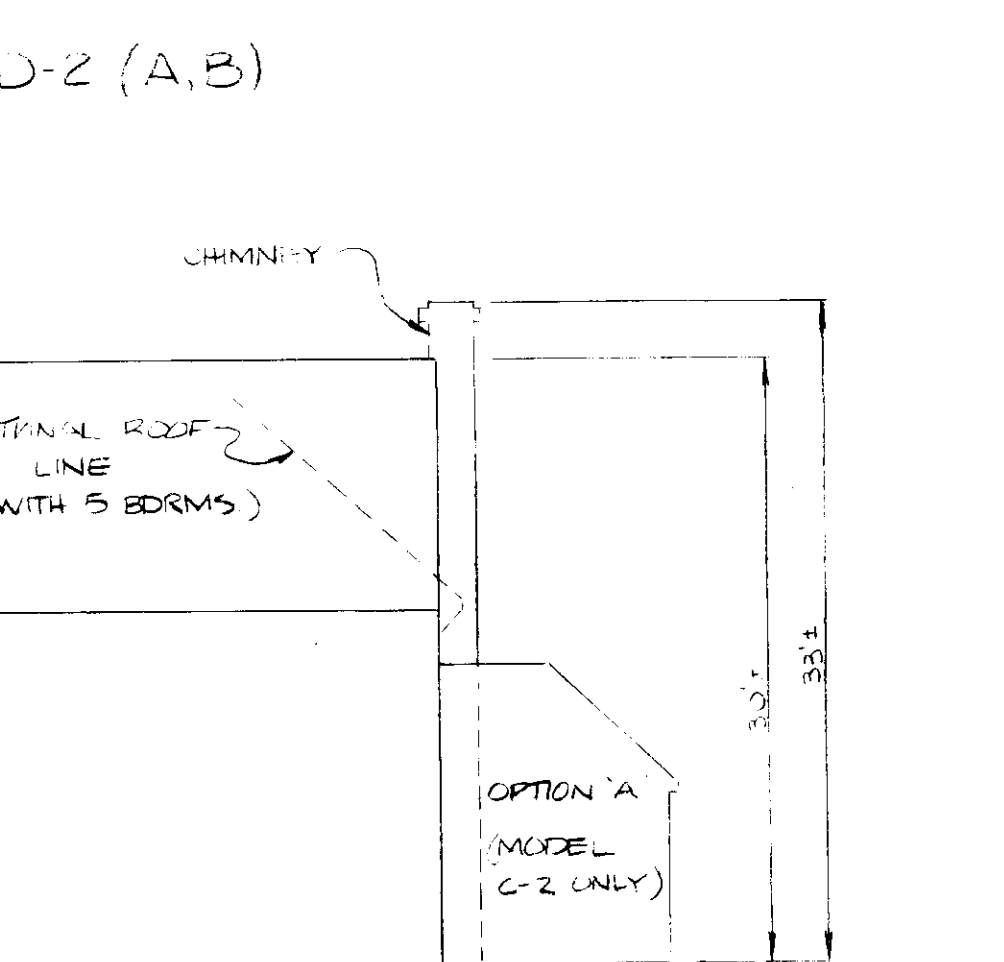
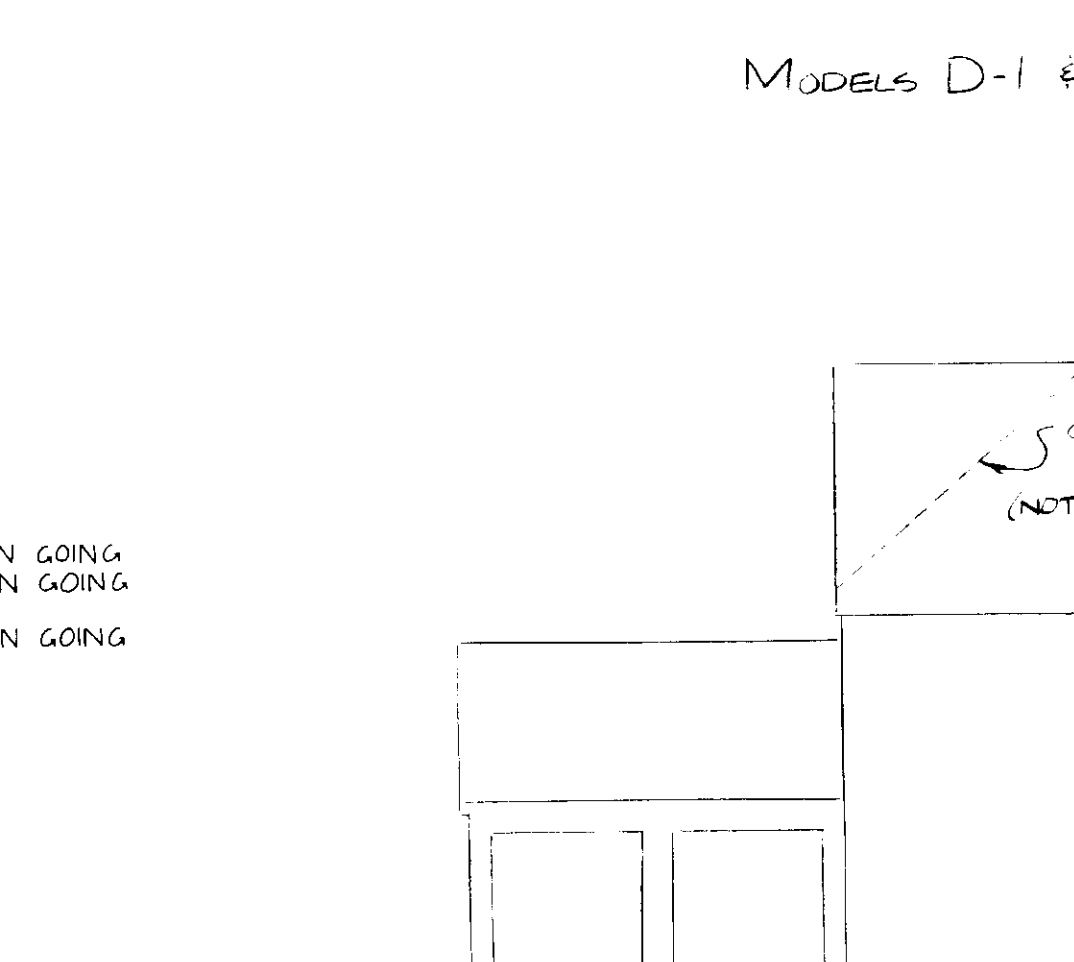
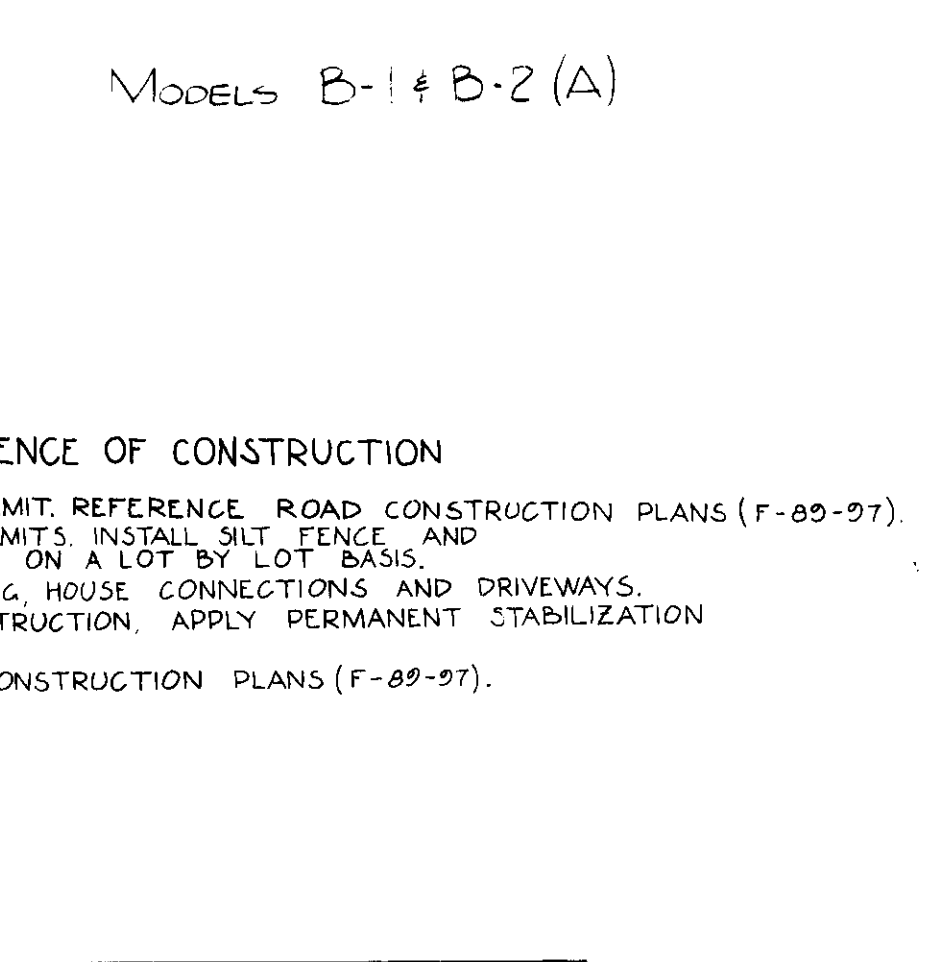
Soil Amendments: In lieu of soil test recommendations, use one of the following schedules:

1. Preferred - Apply 2 tons per acre dolomitic limestone (92 lbs/1000 sq. ft.) and 600 lbs per acre 10-10-10 fertilizer (14 lbs/1000 sq. ft.) before seeding.
2. Acceptable - Apply 2 tons per acre dolomitic limestone (92 lbs/1000 sq. ft.) and 1000 lbs per acre ureaform fertilizer (14 lbs/1000 sq. ft.) before seeding. Harrow or disc into upper three inches of soil.

Seeding: For the periods March 1 through April 30, and August 15 through October 15, seed with 60 lbs/acre (1.4 lbs/1000 sq. ft.) of Kentucky 31 Tall Fescue. For the period May 1 through July 31, seed with 60 lbs/acre (1.4 lbs/1000 sq. ft.) of Kentucky 31 Tall Fescue per acre and 2 lbs per acre (.05 lbs/1000 sq. ft.) of seeding lovegrass. During the period of October 16 through February 28, protect site by applying 2 tons per acre of well anchored straw mulch and seed as soon as possible in the Spring. Option (2) use seed. Option (3) seed with 60 lbs/acre Kentucky 31 Tall Fescue and mulch with 2 tons/acre well anchored straw.

Mulching: Apply 1 1/2 to 2 tons per acre (70 to 90 lbs/1000 sq. ft.) of untreated small grain straw immediately after seeding. Anchor mulch immediately after application using mulch anchoring tool or 28 gallons per acre (5 gal/1000 sq. ft.) of emulsified asphalt on flat areas. On slopes 8 feet or higher, use 348 gallons per acre (5 gal/1000 sq. ft.) for anchoring.

Maintenance: Inspect all seeded areas and make needed repairs, replacements and reseedings.



TEMPORARY SEEDING NOTES

Apply to graded or cleared areas likely to be redistributed where a short-term vegetative cover is needed.

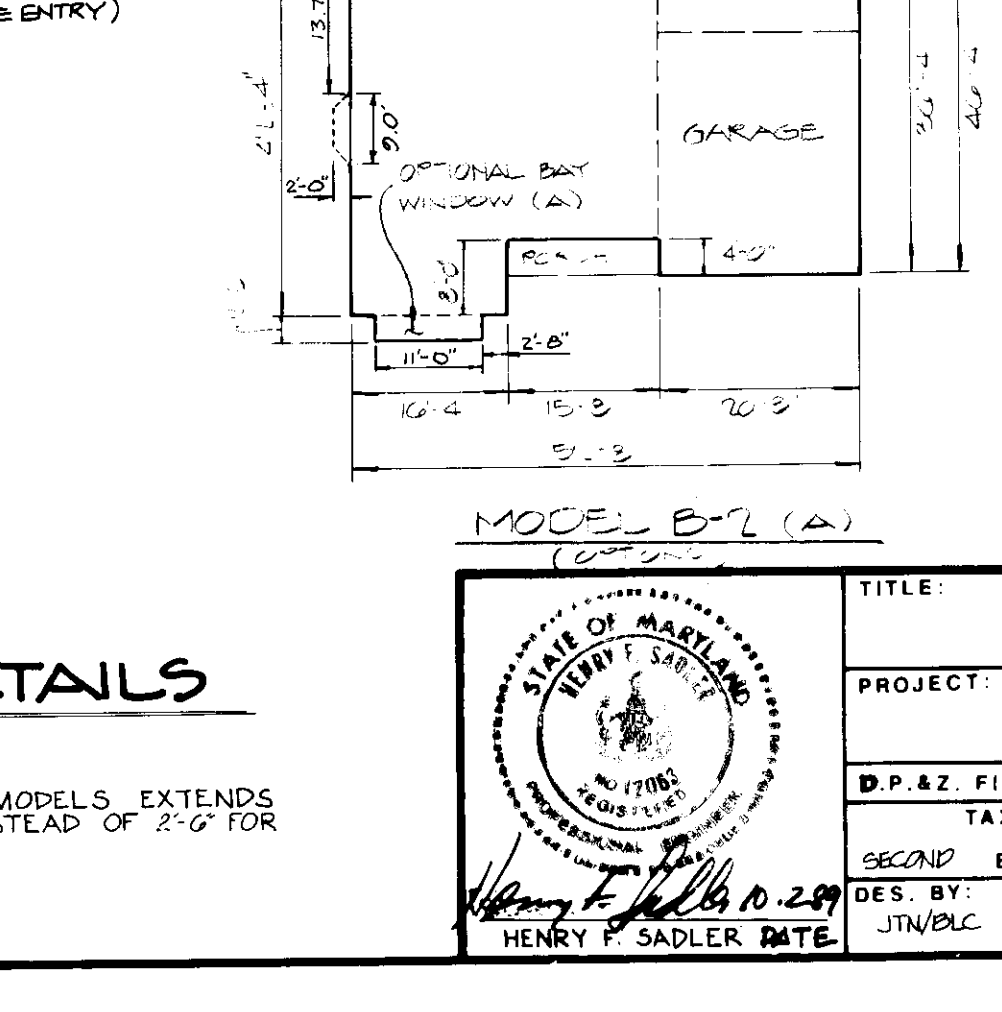
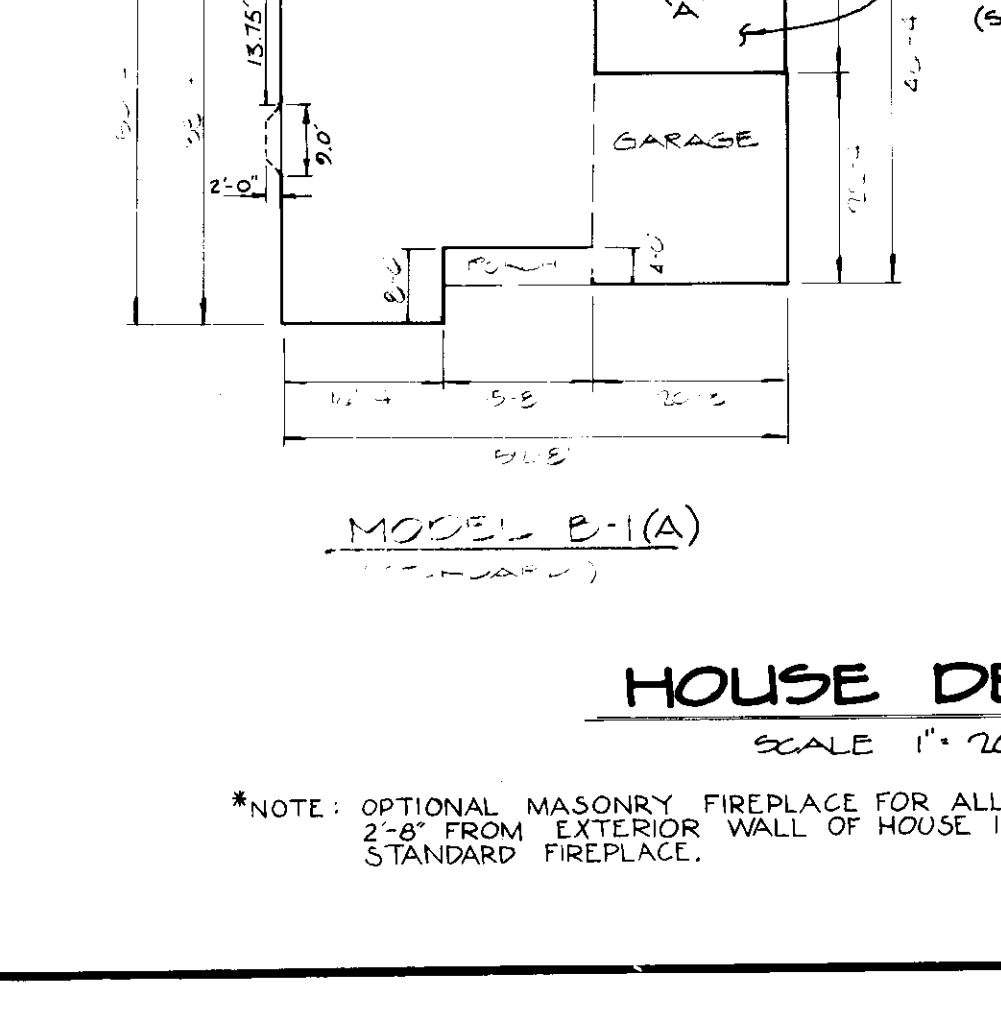
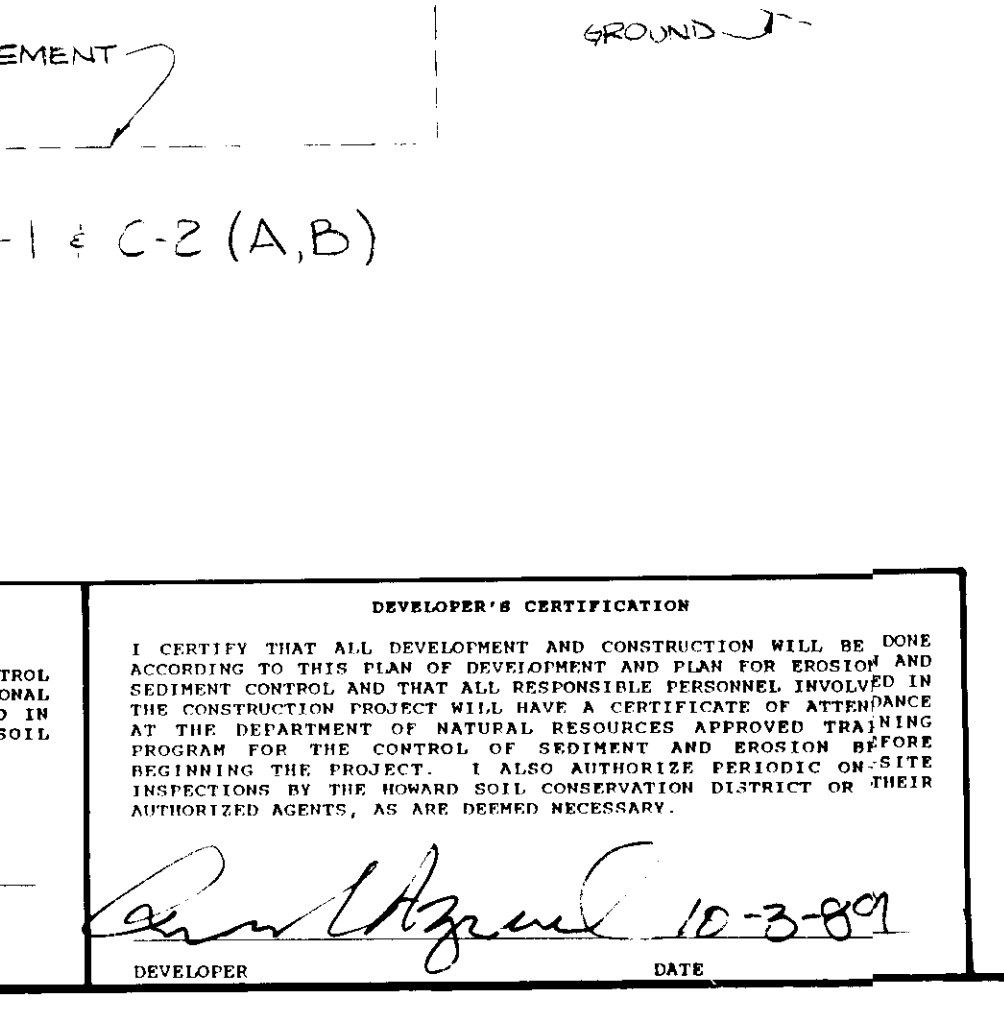
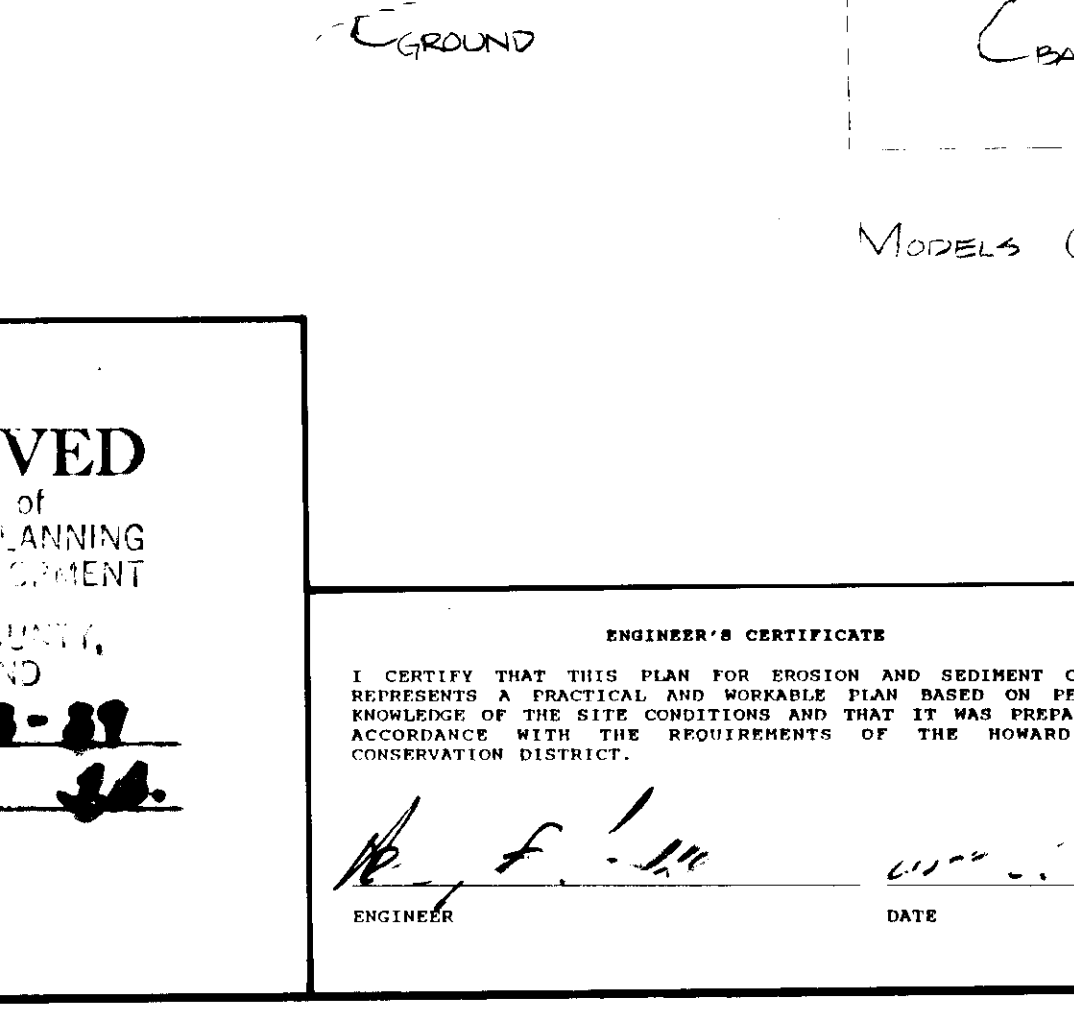
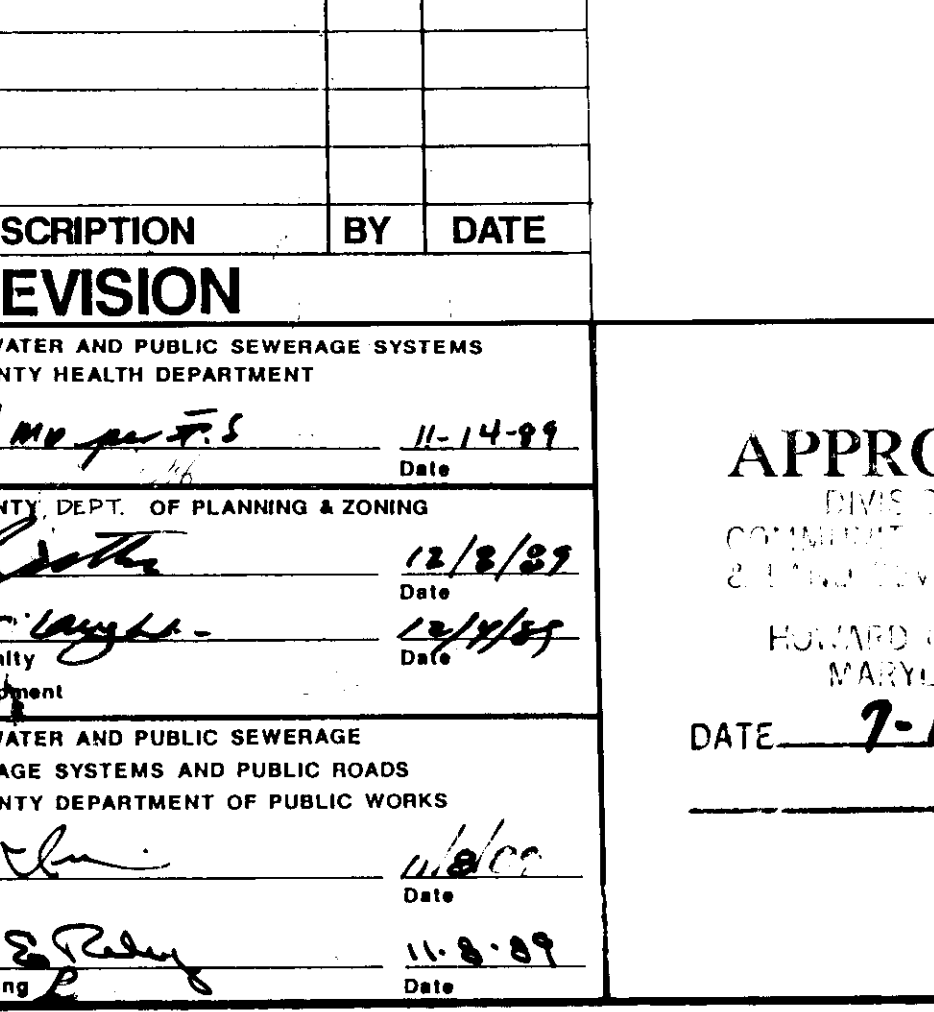
Seeding Instructions: Loosen upper three inches of soil by raking, discing or other acceptable means before seeding if not previously loosened.

Soil Amendments: Apply 600 lbs per acre 10-10-10 fertilizer (14 lbs/1000 sq. ft.)

Seeding: For periods March 1 through April 30 and from August 15 through November 15, seed with 2 1/2 bushels per acre of annual rye (3.2 lbs/1000 sq. ft.). For the period May 1 through August 14, seed with 1 lb per acre of seeding lovegrass (.7 lb/1000 sq. ft.). For the period November 16 through February 28, protect site by applying 2 tons per acre of well anchored straw mulch and seed as soon as possible in the Spring, or use seed.

Mulching: Apply 1 1/2 to 2 tons per acre (70 to 90 lbs/1000 sq. ft.) of untreated small grain straw immediately after seeding. Anchor mulch immediately after application using mulch anchoring tool or 28 gallons per acre (5 gal/1000 sq. ft.) of emulsified asphalt on flat areas. On slopes 8 feet or higher, use 348 gallons per acre (5 gal/1000 sq. ft.) for anchoring.

Refer to the 1983 MARYLAND STANDARDS AND SPECIFICATIONS FOR SOIL EROSION AND SEDIMENT CONTROL for rate and methods not covered.



DRIVEWAY PAVING SECTIONS

FROM ROAD TO R/W: 1" BIT CONC. SURF, 4" BIT CONC. BASE

FROM R/W TO HOUSES: 1 1/2" BIT CONC. SURF, 2" CRUSHER RUN

P-1 NOT TO SCALE

NOTE: ALL DRIVEWAY ENTRANCES ARE TO BE IN ACCORDANCE WITH HO. CO. STANDARD DETAILS R-603 AND R-605 AS SIDEWALK DICTATES UNLESS OTHERWISE NOTED.

OWNER
CHATEAU HOMES, INC.
8800 COLUMBIA 100 PKWY.
SUITE 100
COLUMBIA, MD 21045
(301) 720-0400

DETAILS
PROJECT: BROOKFIELD
LOTS 1-31
D.P.#2 FILE NOS.: GP-02, RP-02, SP-02, ST-02, F-02, S-02
TAX MAP #31, BLOCK D, PARCEL 351
SECOND ELECTION DISTRICT, HOWARD COUNTY, MD.
DES. BY: JTN/PLC
DRAWN BY: LRC/PLC
CHKD. BY: JTN
DATE: SEP. 1989

DST&A Inc.
11 WARREN ROAD
BALTIMORE, MD 21208
1301 484-4100
SCALE: AS NOTED SHEET 10 OF 10
SDP-89-175

SEQUENCE OF CONSTRUCTION

1. OBTAIN GRADING PERMIT, REFERENCE ROAD CONSTRUCTION PLANS (F-89-97).
2. OBTAIN BUILDING PERMITS, INSTALL SILT S.C.E. AS REQUIRED ON A LOT BY LOT BASIS.
3. CONSTRUCT DWELLING, HOUSE CONNECTIONS AND DRIVEWAYS.
4. AFTER HOUSE CONSTRUCTION, APPLY PERMANENT STABILIZATION TO ENTIRE LOT.
5. REFERENCE ROAD CONSTRUCTION PLANS (F-89-97).

ON GOING

ON GOING

ON GOING

NO.	DESCRIPTION	BY	DATE
REVISION			
APPROVED FOR PUBLIC WATER AND PUBLIC SEWERAGE SYSTEMS HOWARD COUNTY HEALTH DEPARTMENT			
	<i>James M. Boyd</i>	<i>M. J. P. S.</i>	11-14-89
APPROVED: HOWARD COUNTY DEPT. OF PLANNING & ZONING			
	<i>Joseph D. Hoot</i>		12/8/89
	<i>Mark S. Ziegler</i>		12/15/89
Chief, Division of Community Planning and Land Development			
APPROVED FOR PUBLIC WATER AND PUBLIC SEWERAGE STORM DRAINAGE SYSTEMS AND PUBLIC ROADS HOWARD COUNTY DEPARTMENT OF PUBLIC WORKS			
	<i>James P. Lane</i>		11/20/89
	<i>William S. P. Kelly</i>		11/8/89
Chief Bureau of Engineering			

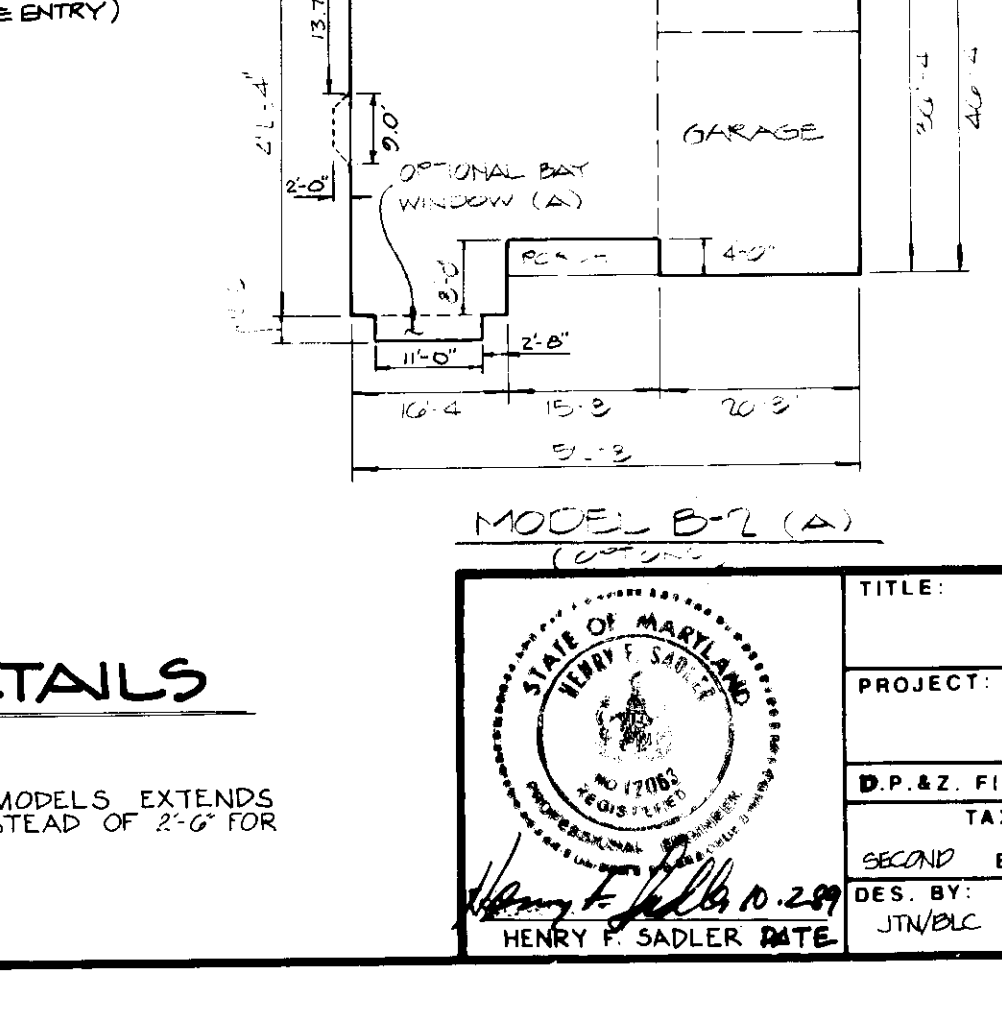
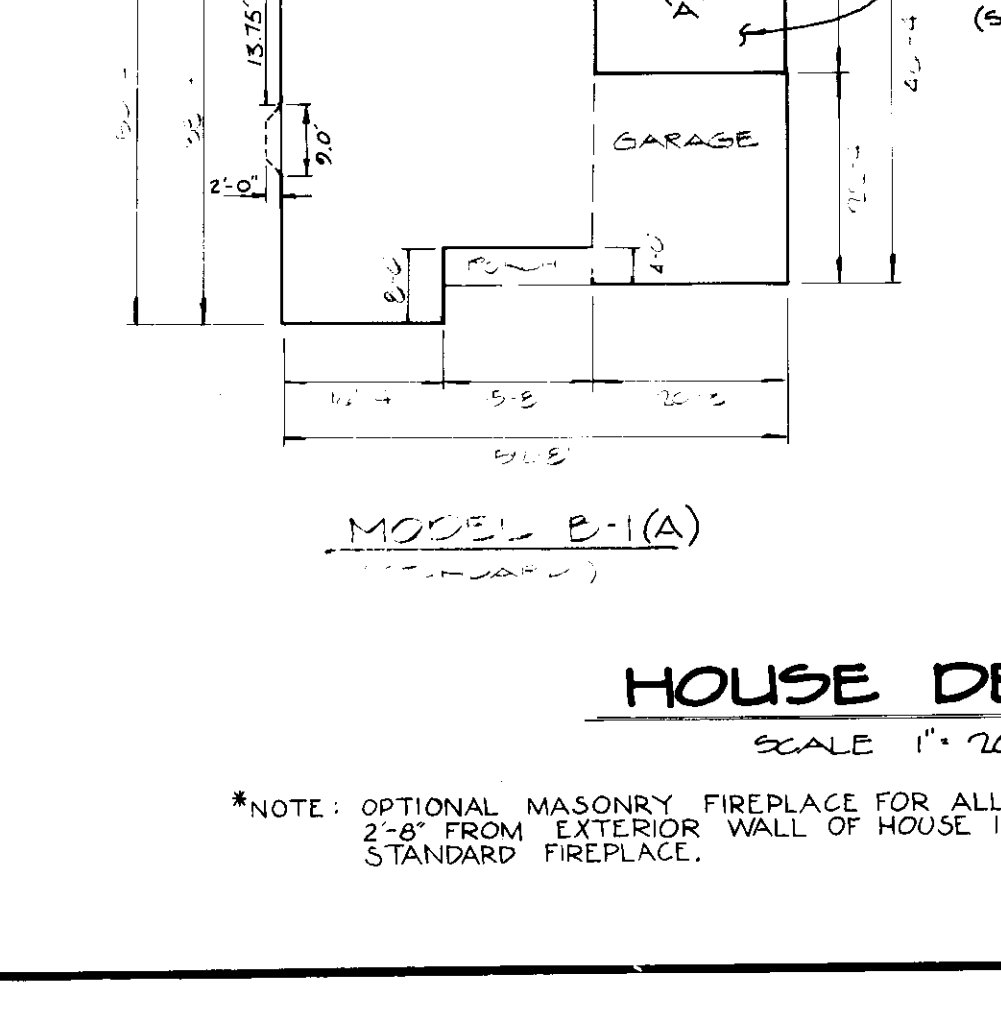
APPROVED
DIVISION of COMMUNITY PLANNING & ZONING
HOWARD COUNTY, MARYLAND
DATE: 7-13-89

ENGINEER'S CERTIFICATE
I CERTIFY THAT THIS PLAN FOR EROSION AND SEDIMENT CONTROL REPRESENTS A PRACTICAL AND WORKABLE PLAN BASED ON PERSONAL KNOWLEDGE OF THE SITE CONDITIONS AND THAT IT WAS PREPARED IN ACCORDANCE WITH THE REQUIREMENTS OF THE HOWARD SOIL CONSERVATION DISTRICT.

W. F. Lane
ENGINEER
DATE: 7-13-89

DEVELOPER'S CERTIFICATION
I CERTIFY THAT ALL DEVELOPMENT AND CONSTRUCTION WILL BE DONE ACCORDING TO THIS PLAN OF DEVELOPMENT AND PLAN FOR EROSION AND SEDIMENT CONTROL AND THAT ALL RESPONSIBLE PERSONNEL INVOLVED IN THE CONSTRUCTION PROJECT WILL HAVE A CERTIFICATE OF ATTENDANCE AT THE DEPARTMENT OF NATURAL RESOURCES APPROVED TRAINING PROGRAM FOR THE CONTROL OF SEDIMENT AND EROSION BEFORE BEGINNING THE PROJECT. I ALSO AUTHORIZE PERIODIC ON-SITE INSPECTIONS BY THE HOWARD SOIL CONSERVATION DISTRICT OR THEIR AUTHORIZED AGENTS, AS DEEMED NECESSARY.

James M. Boyd
DEVELOPER
DATE: 10-3-89



HOUSE DETAILS
SCALE: 1" = 20'

*NOTE: OPTIONAL MASONRY FIREPLACE FOR ALL MODELS, EXTENDS 2'-8" FROM EXTERIOR WALL OF HOUSE INSTEAD OF 2'-0" FOR STANDARD FIREPLACE.