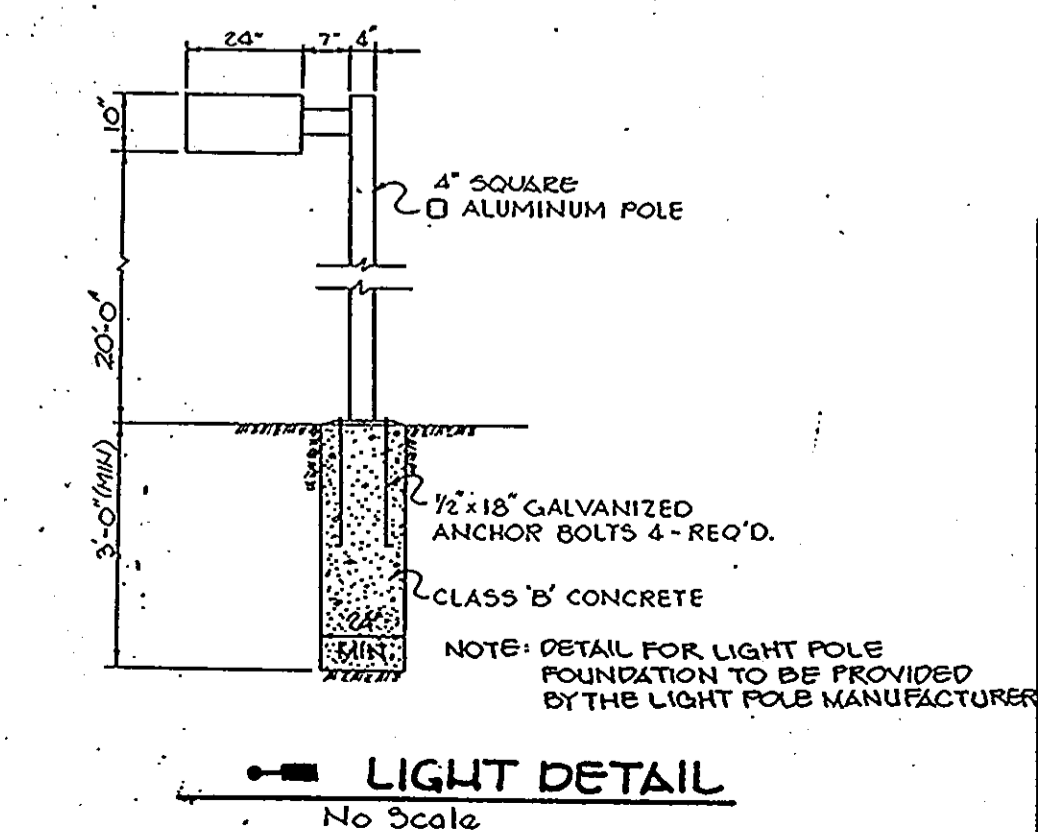


OFF STREET PARKING RESERVOIR DETAIL
NO SCALE

- NOTES:
1. ALL LIGHT FIXTURES TO BE SINGLE LUMINAIRE 400 WATT MERCURY TYPE 20' HIGH WITH METAL POLES AND DIRECTED DOWNWARD.
 2. LOCATIONS OF LIGHT FIXTURES ARE ON THE PLAN AND ARE SHOWN THIS WAY.
 3. LIGHTS TO BE MODULE II TYPE AS MANUFACTURED BY MOLDCAST OR APPROVED EQUAL.
 4. POLE AND FIXTURE TO HAVE BLACK POLYESTER ENAMEL FINISH.
 5. POLE TO BE LOCATED 3' BACK FROM BACK OF CURB.



LIGHT DETAIL
No Scale

- LEGEND
- P-1 PAVING (PARKING)
 - P-2 PAVING (DRIVE LANE)
 - 8" THICK CONCRETE PAD
 - BRL BUILDING RESTRICTION LINE
 - LIGHT POLE SEE DETAIL THIS SHEET.
 - 100' HIGH FLAG POLE SEE ARCHITECTURAL DRAWINGS FOR DETAIL
 - BENCH - VICTOR STANLEY MODEL 28 - REDWOOD MOUNTED IN GROUND

- NOTES
1. ALL CURB RADI 5' UNLESS OTHERWISE NOTED.
 2. EXISTING CURB AND GUTTER AT PROPOSED ENTRANCE TO BE REMOVED AS NECESSARY.
 3. ALL DIMENSIONS TO FACE OF BUILDING, FACE OF CURB, OR CENTERLINE OF DRIVE LANE (WHERE APPLICABLE) UNLESS OTHERWISE NOTED.
 4. VACUUM ISLANDS ARE TO BE 3' WIDE UNLESS OTHERWISE NOTED FOR EXACT LOCATION & DETAILS OF ISLANDS SEE ARCHITECTURAL DRAWINGS.
 5. BUILDING I THROUGH III ARE CAR WASH BAYS. CENTRAL CORE BUILDING TO BE MECHANICAL AND OFFICE SPACE.

APPROVED: FOR PUBLIC WATER AND PUBLIC SEWERAGE SYSTEMS, HOWARD COUNTY HEALTH DEPARTMENT.

Joseph Boyer 2-14-89
COUNTY HEALTH OFFICER DATE

APPROVED: HOWARD COUNTY OFFICE OF PLANNING AND ZONING.

William J. ... 3.7.89
PLANNING DIRECTOR DATE

Mark J. ... 2-21-89
CHIEF, DIVISION OF COMMUNITY PLANNING AND LAND DEVELOPMENT DATE

APPROVED: FOR PUBLIC WATER, PUBLIC SEWERAGE, STORM DRAINAGE SYSTEMS AND PUBLIC ROADS.

HOWARD COUNTY DEPARTMENT OF PUBLIC WORKS

James ... 2/16/89
DIRECTOR DATE

... 2-16-89
CHIEF, BUREAU OF ENGINEERING DATE

11-2-89 REMOVE PROPOSED FIRE HYDRANT ON BERGER RD.

8-16-89 REVISE BUILDING FOOTPRINT.

DATE NO REVISION

OWNER/DEVELOPER

SIENA CORPORATION
2560 BRISTOL COURT, SUITE 101
JESSUP, MARYLAND 20794

PROJECT: CONNELL PROPERTY, PARCEL A
SNOWDEN E-Z CAR WASH
A CAR WASH ADDITION TO SDP-89-117

AREA TAX MAP 42 ZONED M-1 PLAT NO. 7741 PARCEL A
GTH ELECTION DISTRICT
HOWARD COUNTY, MARYLAND

TITLE:
SITE DEVELOPMENT PLAN

THE RIEMER GROUP, INC.
The Riemer Group, Inc. A Land Planning, Design & Civil Engineering Firm
3105 North Ridge Road, Ellicott City, Maryland 21043 (301) 461-2690

APPROVED
DIVISION OF COMMUNITY PLANNING & LAND DEVELOPMENT
HOWARD COUNTY, MARYLAND
DATE 11-10-88

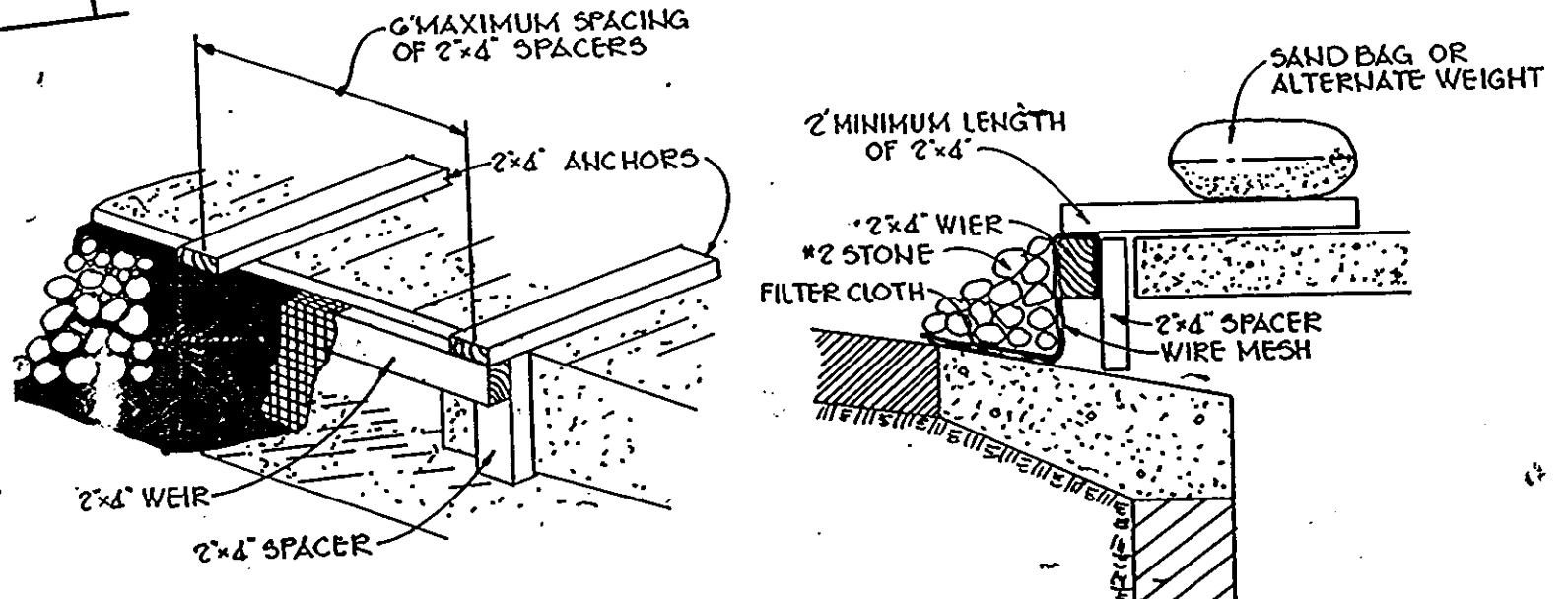
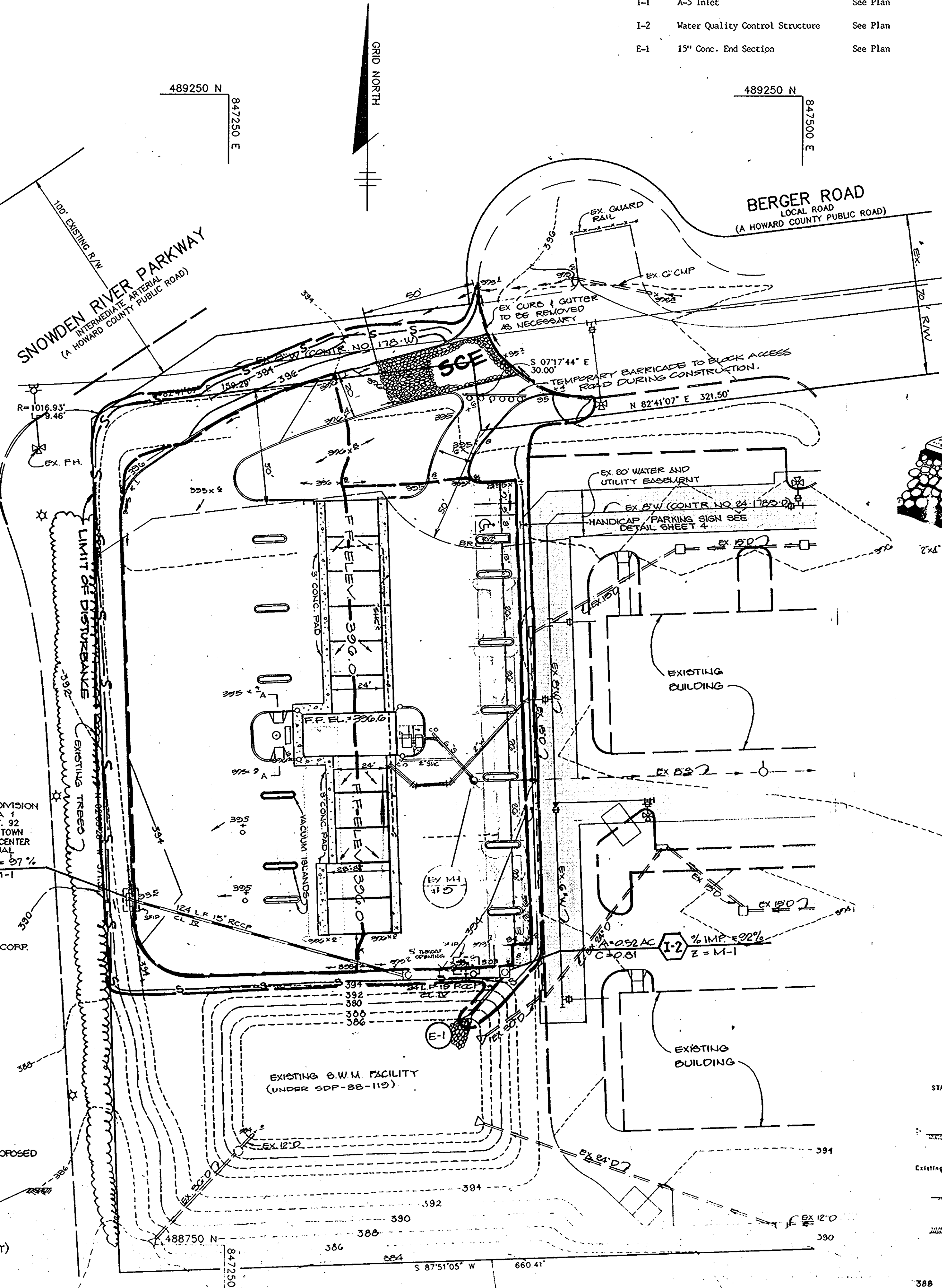
DATE 1-25-89
DESIGNED BY: C.J.R.
DRAWN BY: J.L.B.
PROJECT NO: 55501
DATE: JANUARY 24, 1989
SCALE: AS SHOWN
DRAWING NO. 2 OF 5

ARTHUR E. MUEGGEL

SDP-89-70

STRUCTURE SCHEDULE

No.	Type	Location	T.C. Elev.	Inv. In.	Inv. Out.	Remarks
I-1	A-5 Inlet	See Plan	394.08	-	390.26	Ho. Co. Std. Detail SD-4.01
I-2	Water Quality Control Structure	See Plan	-	387.38	386.50	See Detail Sheet 4 of 5
E-1	15" Conc. End Section	See Plan	-	-	386.00	Ho. Co. Std. Detail SD-5.51

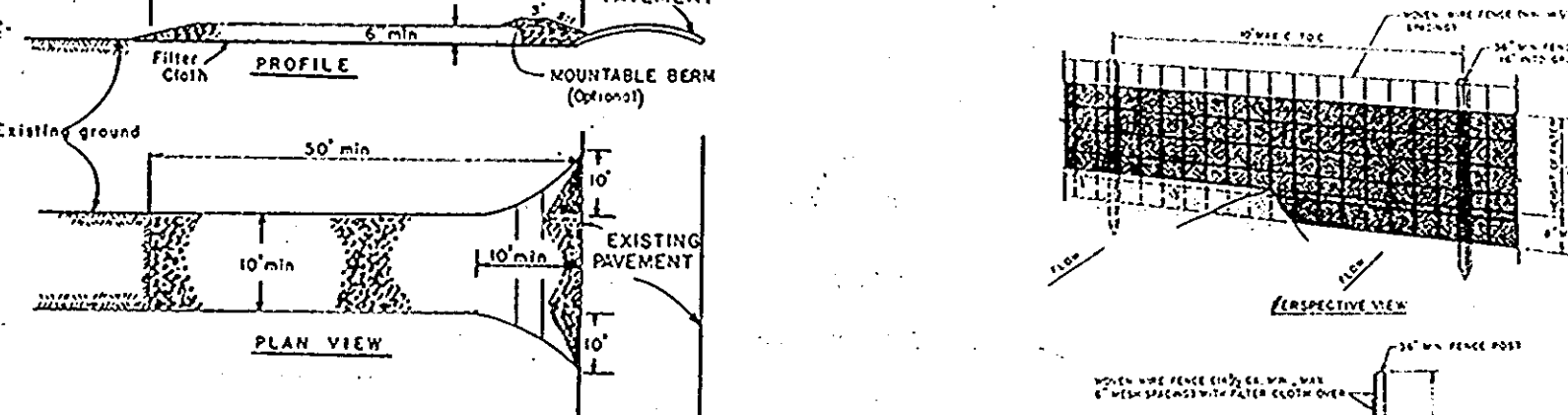


STONE FILTER INLET PROTECTION
NO SCALE

STANDARD SYMBOL S.F.I.P.

Construction Specifications

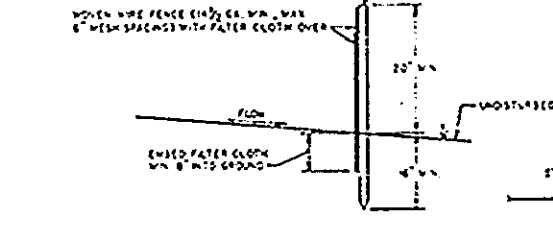
- Materials**
 - Wooden frame is to be constructed of 2" x 4" construction grade lumber.
 - Wire mesh must be of sufficient strength to support filter fabric, and stone for curb inlets, with water fully impounded against it.
 - Filter cloth must be of a type approved for this purpose; resistant to sunlight with sieve size: 200, 40-85, to allow sufficient passage of water and removal of sediment.
 - Stone is to be 2" in size and clean, since fines would clog the cloth.
- Curb Inlet Protection**
 - Attach a continuous piece of wire mesh (30" min. width by throat length plus 4") to the 2" x 4" weir (measuring throat length plus 2") as shown on the standard drawing.
 - Place a piece of approved filter cloth (40-85 sieve) of the same dimensions as the wire mesh over the wire mesh and securely attach to the 2" x 4" weir.
 - Securely nail the 2" x 4" weir to 9" long vertical spacers to be located between the weir and inlet throat (max. 6' apart).
 - Place the assembly against the inlet throat and nail (minimum 2" lengths of 2" x 4" to the top of the weir at spacer locations. These 2" x 4" anchors shall extend across the inlet top and be held in place by sandbags or alternate weight.
 - The assembly shall be placed so that the end spacers are a minimum 1" beyond both ends of the throat opening.
 - For the wire mesh and filter cloth to the concrete gutter and against the face of curb on both sides of the inlet. Place clean 2" stone over the wire mesh and filter fabric in such a manner as to prevent water from entering the inlet under or around the filter cloth.
 - This type of protection must be inspected frequently and the filter cloth and stone replaced when clogged with sediment.
 - Assure that storm flow does not bypass inlet by installing temporary earth or asphalt dikes directing flow into inlet.



CONSTRUCTION SPECIFICATIONS

- Stone size - Use 2" stone, or recycled or recycled concrete equivalent.
- Length - As required, but not less than 20 feet (except on a single cast, since 1st where a 20 foot minimum length would apply).
- Thickness - 80% less than six (6) inches.
- Width - Ten (10) foot minimum, but not less than the full width at points where ingress or egress occurs.
- Filter cloth - Will be placed over the entire area prior to placing of stone. Filter will not be replaced on a single family residence lot.
- Surface Water - All surface water flowing or directed toward construction entrance shall be piped across the entrance. If piping is impractical, a portable berm with 5% slope will be permitted.
- Maintenance - The entrance shall be maintained in a condition which will prevent tracking or flowing of sediment onto public right-of-way. This may require periodic top dressing with additional stone as conditions demand and repair and/or cleanup of any residue used to trap sediment. All sediment applied, dropped, washed or tracked onto public right-of-way must be removed immediately.
- Warning - Trucks shall be cleaned to remove sediment prior to entrance onto public right-of-way. When washing is required, it shall be done on an area stabilized with stone and which drains into an approved sediment trapping device.
- Periodic inspection and needed maintenance shall be provided after each rain.

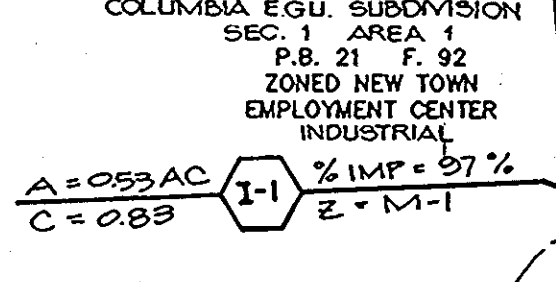
STABILIZED CONSTRUCTION ENTRANCE
NO SCALE



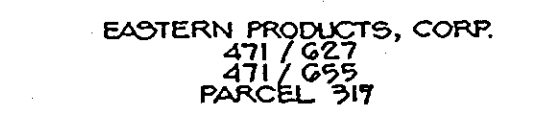
CONSTRUCTION NOTES FOR STABILIZED CONSTRUCTION ENTRANCE

- 2x4 WEIR SHALL BE PLACED SECURELY TO THE GROUND WITH THE 2x4 ANCHORS.
- 2x4 WEIR SHALL BE PLACED SECURELY TO THE GROUND WITH THE 2x4 ANCHORS.
- 2x4 WEIR SHALL BE PLACED SECURELY TO THE GROUND WITH THE 2x4 ANCHORS.
- 2x4 WEIR SHALL BE PLACED SECURELY TO THE GROUND WITH THE 2x4 ANCHORS.
- 2x4 WEIR SHALL BE PLACED SECURELY TO THE GROUND WITH THE 2x4 ANCHORS.
- 2x4 WEIR SHALL BE PLACED SECURELY TO THE GROUND WITH THE 2x4 ANCHORS.

SILT FENCE
NO SCALE



SECTION A-A



EROSION CONTROL FABRIC SECTION

STRUCTURE	MEDIUM STONE DIA.	LENGTH (L)	WIDTH (W)	THICKNESS (T)
E-1	0.5'	10'	11.25'	1.12'

OUTLET PROTECTION DETAIL
No Scale

SEQUENCE OF CONSTRUCTION

- Obtain a grading permit.
- Install stabilized construction entrance and silt fence (2 days) AND BLOCK ENTRANCE AND SHOW ON SHEET 3.
- Begin site grading and building construction.
- Bring the site to subgrade and install storm drains, water and sewer and stone filter inlet protection. (6 days)
- Install curb and gutter and begin paving.
- Finish all construction activities and stabilize all disturbed areas in accordance with permanent seeding notes.
- Upon approval of the Howard County Department of Public Works Sediment Control Inspector remove all sediment control devices and stabilize all disturbed areas in accordance with the permanent seeding notes. (1 day)

TEMPORARY SEEDING NOTES

Apply to graded or cleared areas likely to be reseeded where a short-term vegetative cover is needed.

Soil Preparation: Loosen upper three inches of soil by raking, discing or other acceptable means before seeding, if not previously loosened.

Soil Amendments: In lieu of soil test recommendations, use one of the following alternatives:

- Preferred - Apply 2 tons per acre dolomitic limestone (92 lbs/1000 sq ft) and 600 lbs per acre 10-10-10 fertilizer (14 lbs/1000 sq ft) before seeding. Harvest or disc into upper three inches of soil.
- Acceptable - Apply 2 tons per acre dolomitic limestone (92 lbs/1000 sq ft) and 1000 lbs per acre 10-10-10 fertilizer (23 lbs/1000 sq ft) before seeding. Harvest or disc into upper three inches of soil.

Seeding: For the periods March 1 thru April 30, and August 1 thru October 15, seed with 20 lbs per acre (14 lbs/1000 sq ft) of Kentucky 31 Tall Fescue. For the period May 1 thru July 31, seed with 60 lbs of Kentucky 31 Tall Fescue per acre and 2 lbs per acre (0.5 lbs/1000 sq ft) of creeping ryegrass. During the period of October 16 thru February 15, harvest site by: Option (1) 2 tons per acre of well anchored straw mulch and seed as soon as possible in the spring. Option (2) Use sod. Option (3) Seed with 60 lbs/acre Kentucky 31 Tall Fescue and mulch with 2 tons/acre well anchored straw.

Mulching: Apply 1/4 to 2 tons per acre (70 to 90 lbs/1000 sq ft) of unrotted small grain straw immediately after seeding. Anchor mulch immediately after application using mulch anchoring tool at 218 gal/acre (5 gal/1000 sq ft) of unrotted sphagnum on flat areas. On slopes 8 feet or higher, use 318 gal/acre (8 gal/1000 sq ft) for anchoring.

Maintenance: Inspect all seeded areas and make needed repairs, replacements and rereedings.

SEDIMENT CONTROL NOTES

- A minimum of 24 hours notice must be given to the Howard County Office of Inspections and Permits prior to the start of any construction (992-2437).
- All vegetative and structural practices are to be installed according to the provisions of this plan and are to be in conformance with the 1983 MARYLAND STANDARDS AND SPECIFICATIONS FOR SOIL EROSION AND SEDIMENT CONTROL.
- Following initial soil disturbance or redistribution, permanent or temporary stabilization shall be completed within: a) 7 calendar days for all perimeter sediment control structures, dikes, perimeter slopes and all slopes greater than 3:1, b) 16 days to all other disturbed or graded areas on the project site.
- All sediment traps/basins shown must be fenced and warning signs posted around their perimeter in accordance with Vol. 1, Chapter 12, of the HOWARD COUNTY DESIGN MANUAL, Storm Drainage.
- All disturbed areas must be stabilized within the time period specified above in accordance with the 1983 MARYLAND STANDARDS AND SPECIFICATIONS FOR SOIL EROSION AND SEDIMENT CONTROL for permanent seedings (Sec. 31) and (Sec. 34), temporary seedings (Sec. 30) and mulching (Sec. 32). Temporary stabilization with mulch alone can only be done when recommended seeding dates do not allow for proper germination and establishment of grasses.
- All sediment control structures are to remain in place and are to be maintained in operative condition until permission for their removal has been obtained from the Howard County Sediment Control Inspector.
- Site Analysis:**

Total Area of Site	500 acres
Area Disturbed	128 acres
Area to be roofed or paved	101 acres
Area to be vegetatively stabilized	272 acres
Total Cut	100 Cu. Yds.
Total Fill	100 Cu. Yds.
- Any sediment control practice which is disturbed by grading activity for placement of utilities must be repaired on the same day of disturbance.
- Additional sediment controls must be provided, if deemed necessary by the Howard County DPM sediment control inspector.
- Site grading will begin only after all perimeter sediment control measures have been installed and are in a functioning condition.
- Sediment will be removed from traps when its depth reaches the clean out elevation shown on the plans.

BY THE DEVELOPER:
I/WE CERTIFY THAT ALL DEVELOPMENT AND CONSTRUCTION WILL BE DONE ACCORDING TO THIS PLAN, AND THAT ANY RESPONSIBLE PERSONNEL INVOLVED IN THE CONSTRUCTION PROJECT WILL HAVE A CERTIFICATE OF ATTENDANCE AT A DEPARTMENT OF NATURAL RESOURCES APPROVED TRAINING PROGRAM FOR THE CONTROL OF SEDIMENT AND EROSION BEFORE BEGINNING THE PROJECT. I AM AUTHORIZING PERIODIC ON-SITE INSPECTION BY THE HOWARD SOIL CONSERVATION DISTRICT.
Arthur E. Mueggel 01/17/89
DEVELOPER DATE

BY THE ENGINEER:
I CERTIFY THAT THIS PLAN FOR EROSION AND SEDIMENT CONTROL REPRESENTS A PRACTICAL AND WORKABLE PLAN BASED ON MY PERSONAL KNOWLEDGE OF THE SITE CONDITIONS AND THAT IT WAS PREPARED IN ACCORDANCE WITH THE REQUIREMENTS OF THE HOWARD SOIL CONSERVATION DISTRICT.
Arthur E. Mueggel 1/17/89
ENGINEER DATE

REVIEWED FOR **HOWARD** S.C.D. NAME
I MEETS TECHNICAL REQUIREMENTS
John H. Hahn 2-3-89
U.S. SOIL CONSERVATION SERVICE DATE

THIS DEVELOPMENT PLAN IS APPROVED FOR SOIL EROSION AND SEDIMENT CONTROL BY THE HOWARD SOIL CONSERVATION DISTRICT.
Arthur E. Mueggel 3/1/89
HOWARD S.C.D. DATE

APPROVED: FOR PUBLIC WATER AND PUBLIC SEWERAGE SYSTEMS, HOWARD COUNTY HEALTH DEPARTMENT.
Joseph M. Boyle 2-14-89
COUNTY HEALTH OFFICER DATE

APPROVED: HOWARD COUNTY OFFICE OF PLANNING AND ZONING.
William J. ... 3-7-89
PLANNING DIRECTOR DATE

Charles J. ... 2-22-89
CHIEF, DIVISION OF COMMUNITY PLANNING AND LAND DEVELOPMENT DATE

APPROVED: FOR PUBLIC WATER, PUBLIC SEWERAGE, STORM DRAINAGE SYSTEMS AND PUBLIC ROADS.
James ... 2/6/89
DIRECTOR DATE

James ... 2-10-89
CHIEF, BUREAU OF ENGINEERING DATE

DATE	NO.	REVISION
8-15-88	1	REVISE BUILDING FOOTPRINT

OWNER/DEVELOPER
SIENIA CORPORATION
8500 BRISTOL COURT, SUITE 101
JESSUP, MARYLAND 20794

PROJECT CONNELL PROPERTY, PARCEL A
SNOWDEN E-Z CAR WASH
A CAR WASH ADDITION TO SDP-88-117
AREA TAX MAP #2 ZONED U-1 PLAT NO. 7041 PARCEL A
6TH ELECTION DISTRICT
HOWARD COUNTY, MARYLAND

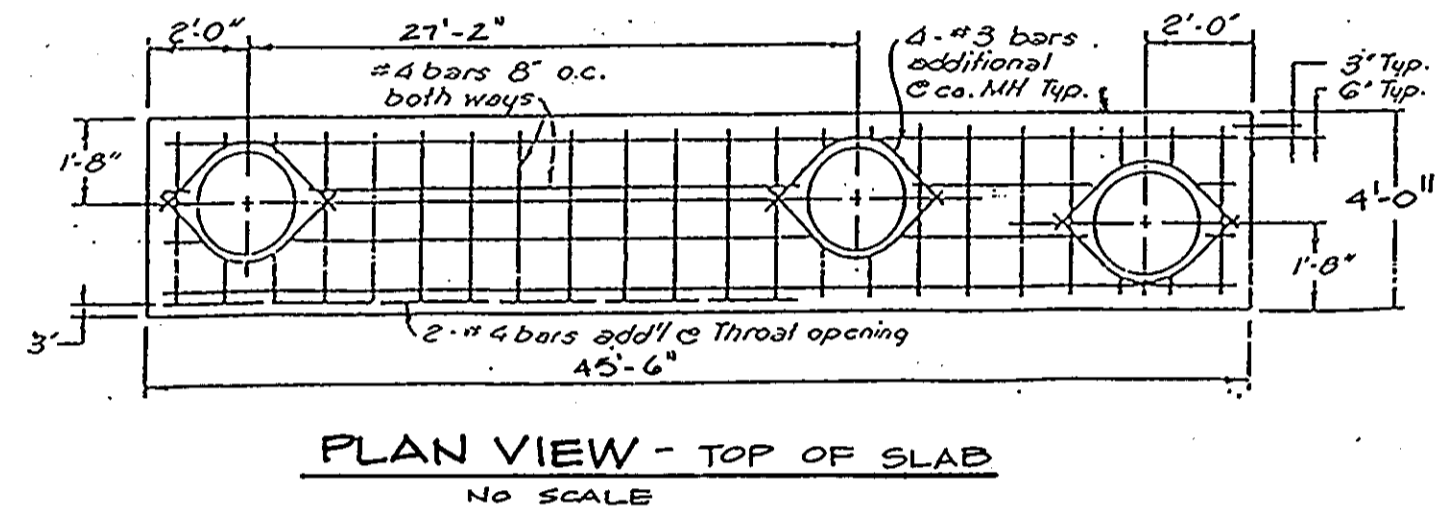
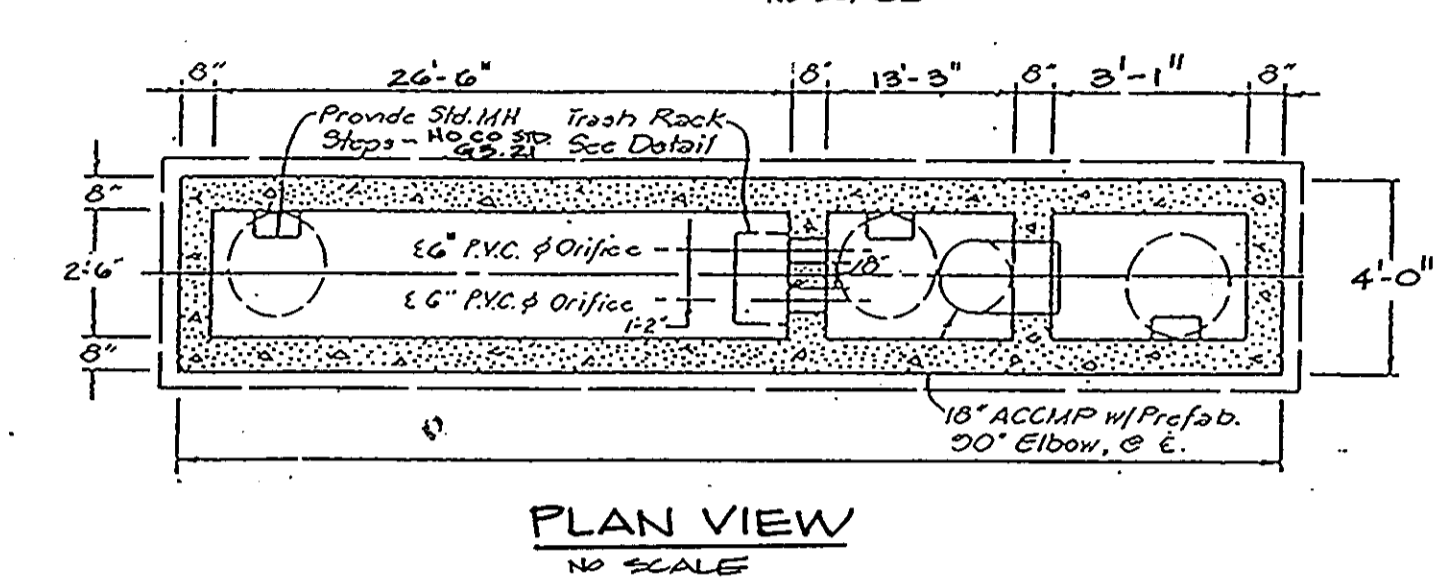
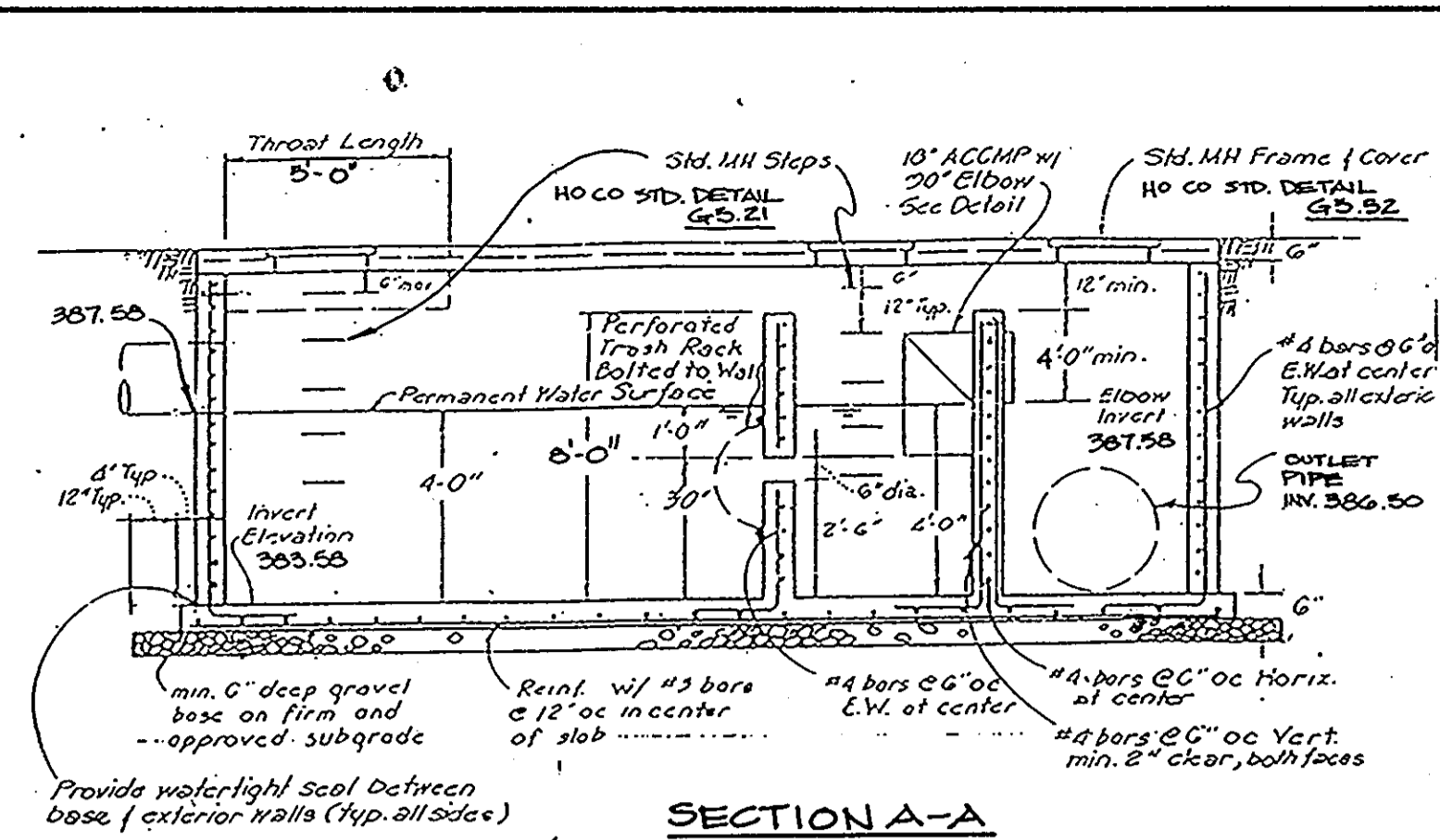
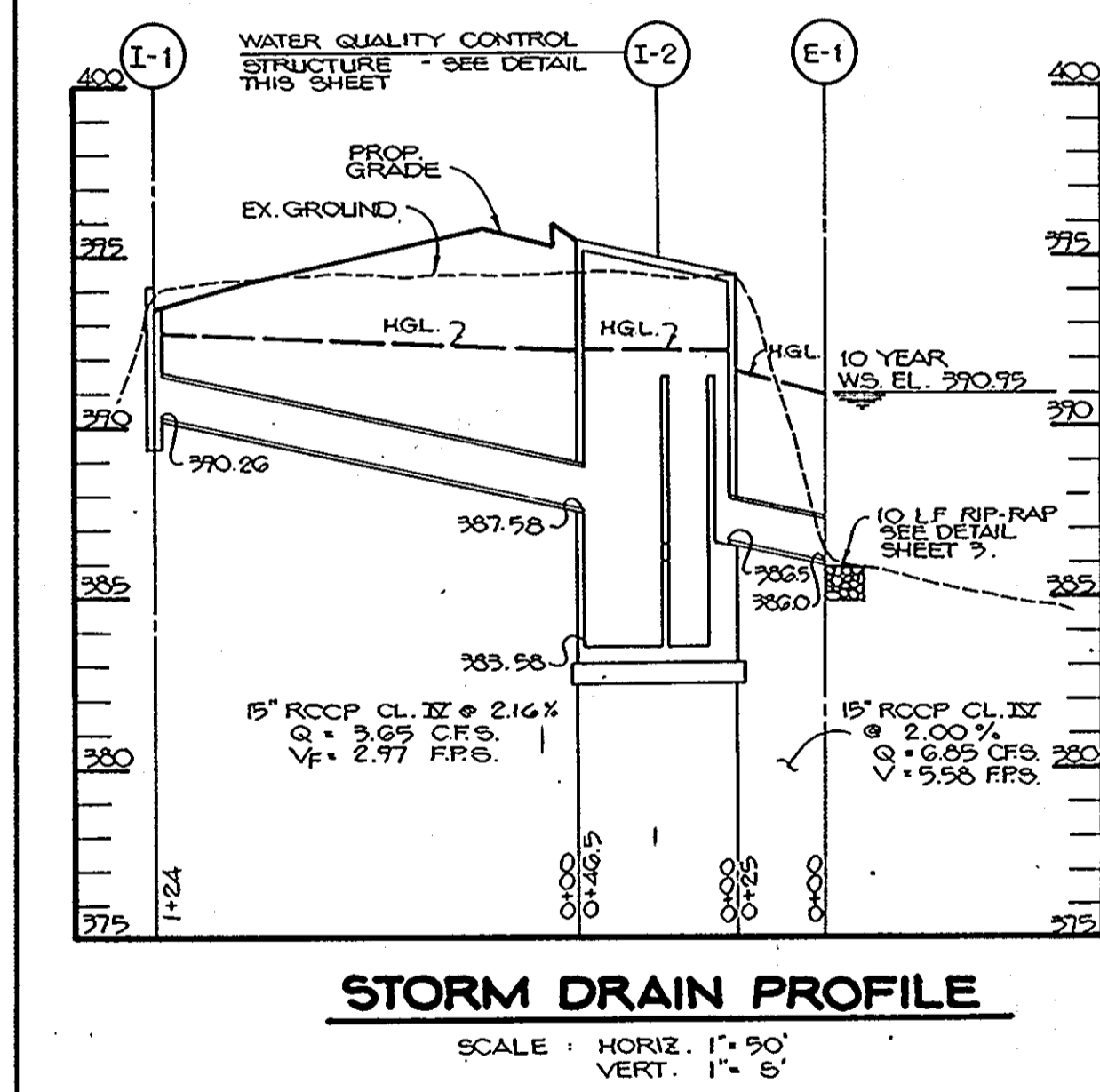
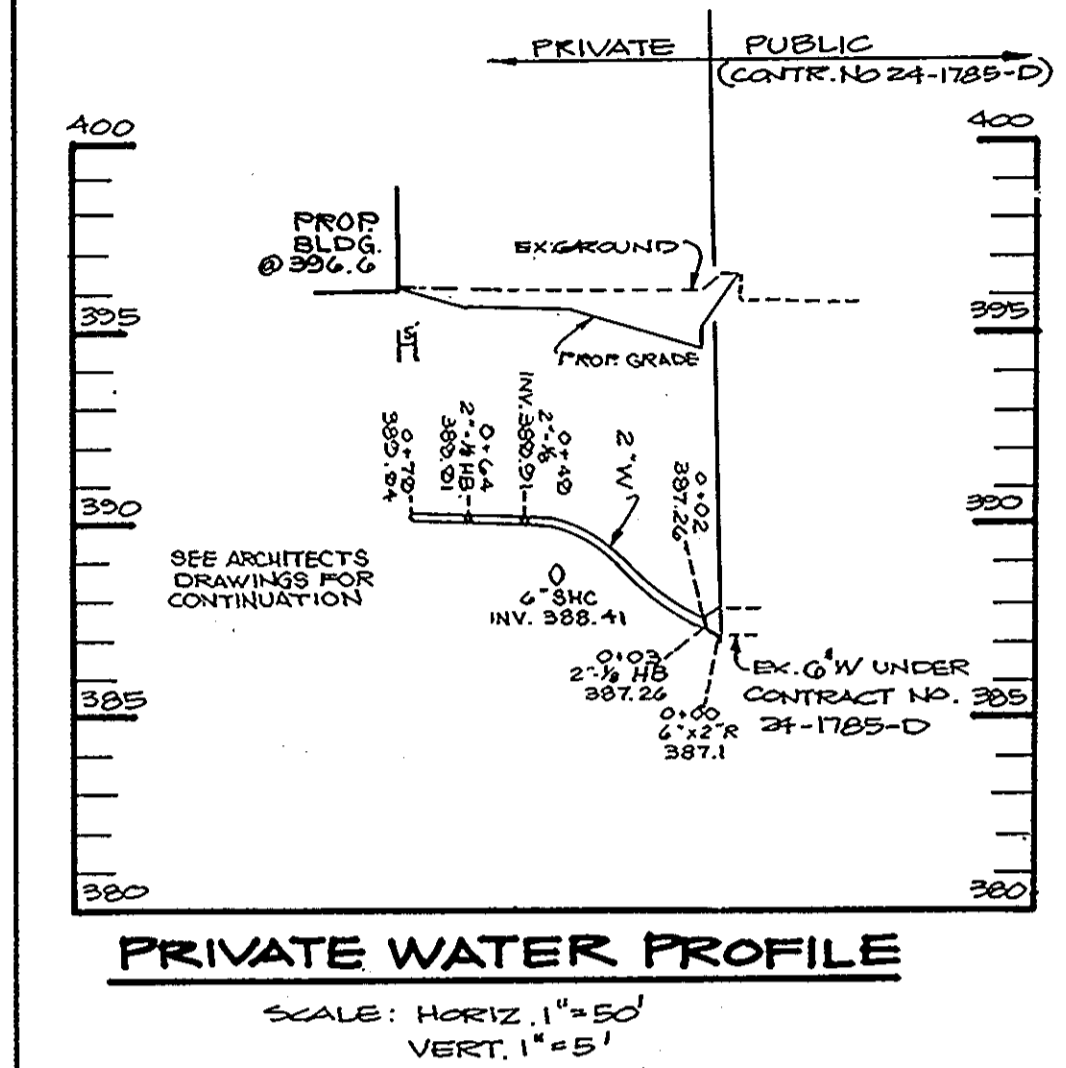
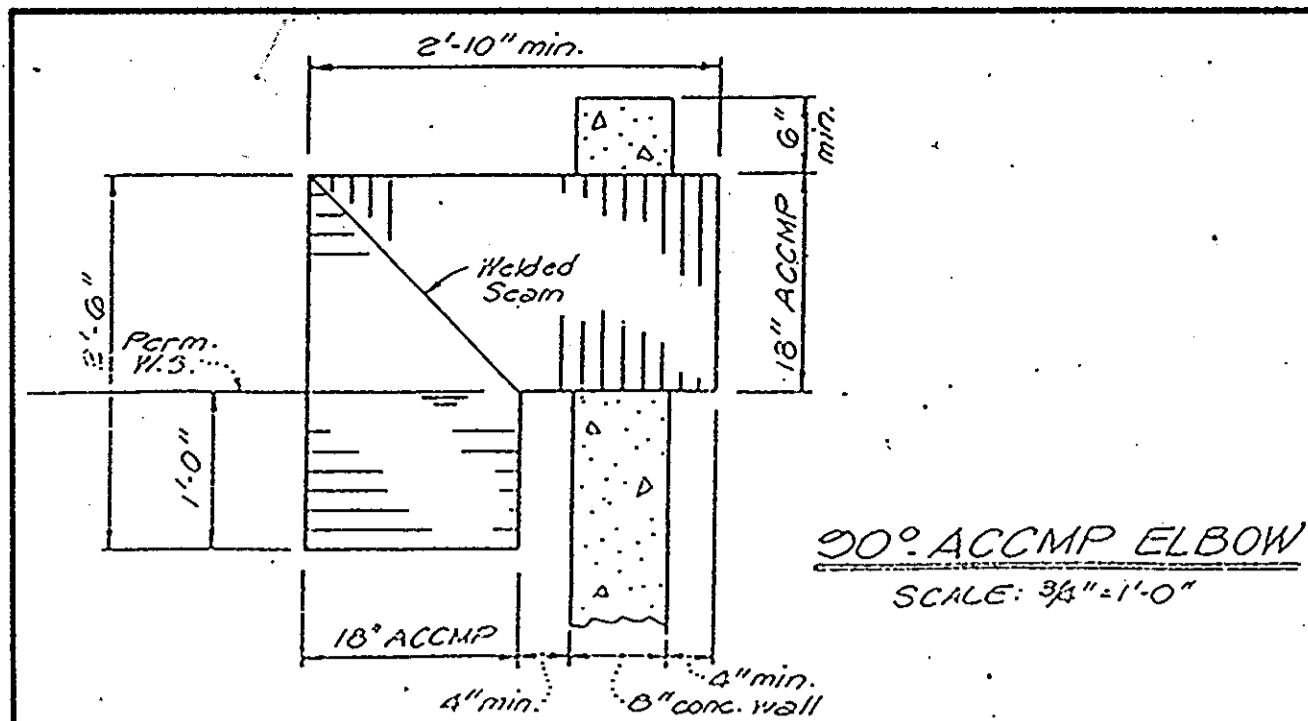
TITLE
DRAINAGE AREA MAP AND SEDIMENT CONTROL PLAN

THE RIEMER GROUP, INC.
The Riemer Group, Inc. A Land Planning, Design & Civil Engineering Firm
3105 North Ridge Road, Ellicott City, Maryland 21043 (301) 461-2690

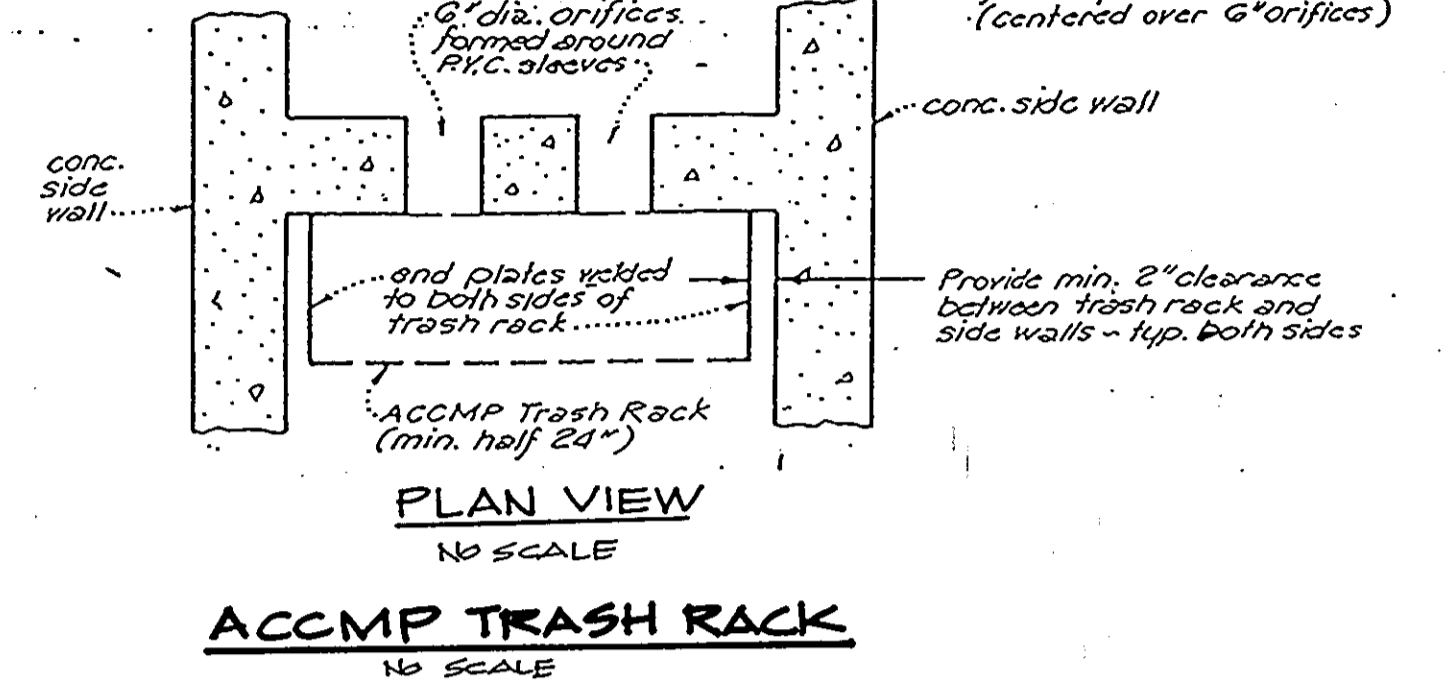
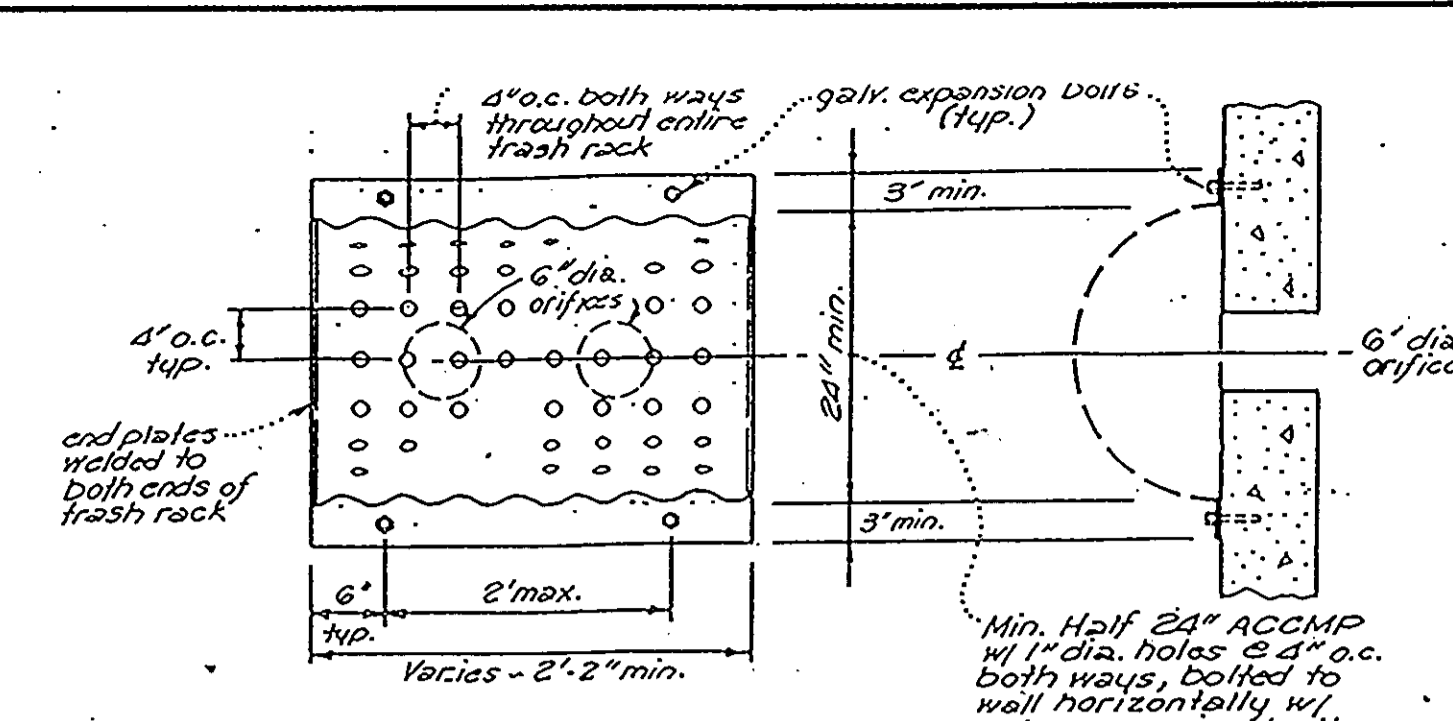
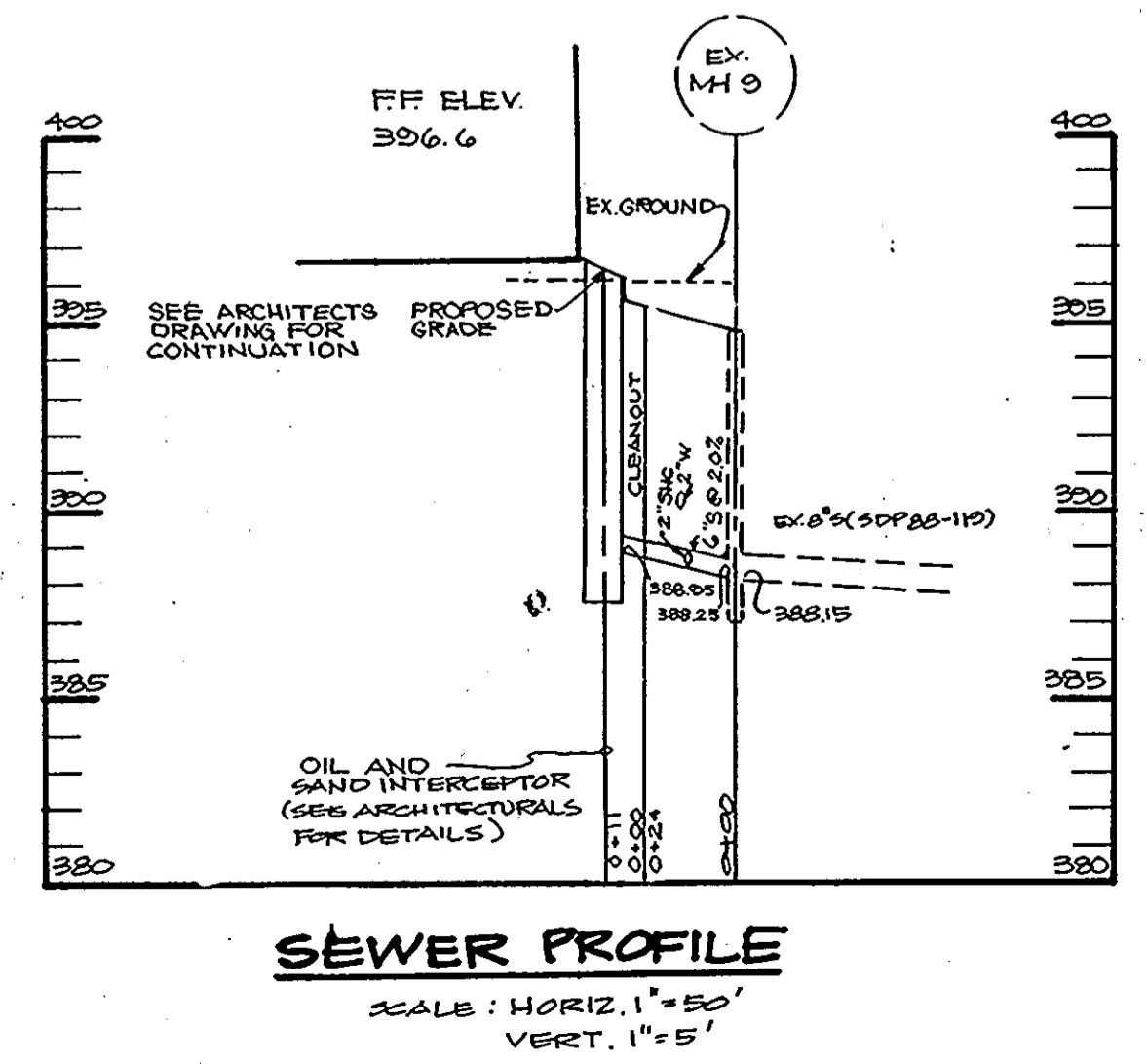
DATE 1/17/89
DESIGNED BY J.L.B.
DRAWN BY J.L.B.
PROJECT NO 60501
DATE JANUARY 17, 1989
SCALE AS SHOWN
DRAWING NO 3 OF 5

Arthur E. Mueggel 1/17/89
ARTHUR E. MUEGGEL, P.E.
PROFESSIONAL ENGINEER

SDP-89-70



WATER QUALITY CONTROL STRUCTURE
NO SCALE



DESIGN AND GENERAL NOTES:

- Use poured-in place concrete for the entire structure.
- Refer to Maryland State Highway Administration for materials and methods of construction.
- Wall thickness shall be as follows:
Minimum 8 inches thick for the first 8'-0" of depth, 12 inch thick walls between 8'-0" and 12'-0" of depth and 16 inch thick walls for depth greater than 12'-0". Depth to be measured from top of top slab to crown of outgoing pipe.
- f'c = 3,500 psi at 28 days.
- All reinforcing steel to be ASTM A615, GR. 60.
- For details concerning throat openings, refer to Howard County Standard Detail SD-4.01.
- For details not noted in this standard, refer to Howard County Standard Detail SD-4.01.
- The top 4 inches of walls may be brick masonry for leveling, if required. Brick masonry shall comply with the latest SHA specification.
- When grate opening is used, refer to the appropriate SHA Standard for details. Details shall be shown on the plans.
- When inside width of structure is greater than 4'-0", reinforcing shall be revised as needed.
- When structure is subject to traffic loading, reinforcing shall be designed for the appropriate traffic loads. Design loads shall be indicated on the plan.
- All inlets and incoming pipes shall be checked for possible backwater or tailwater problems.

MAINTENANCE NOTES (WATER QUALITY STRUCTURE WASTE)

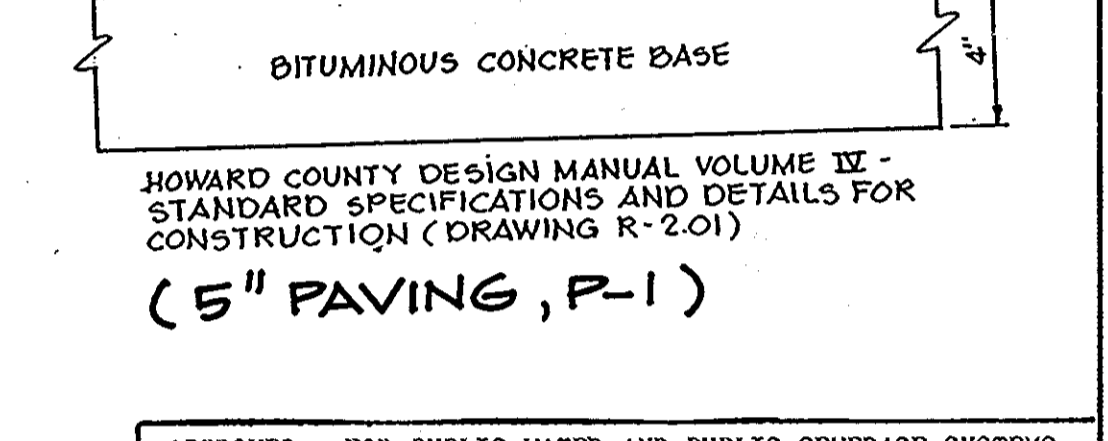
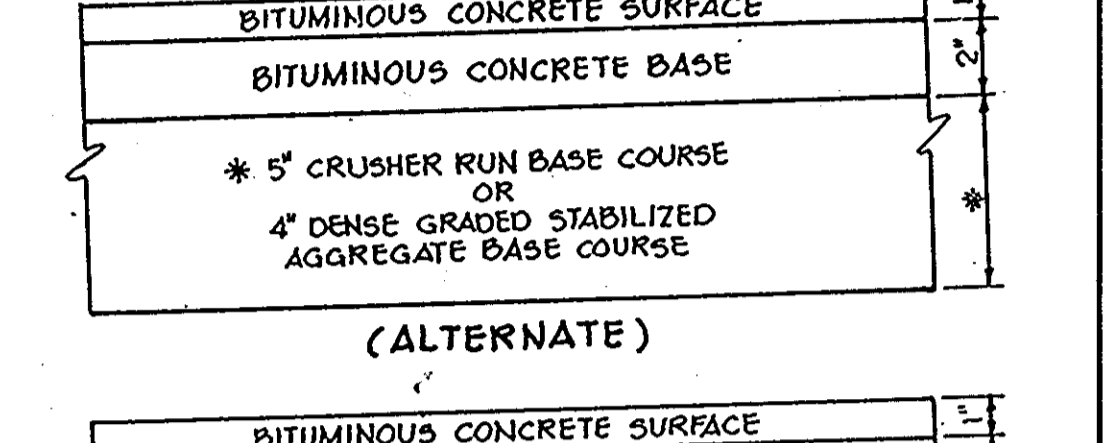
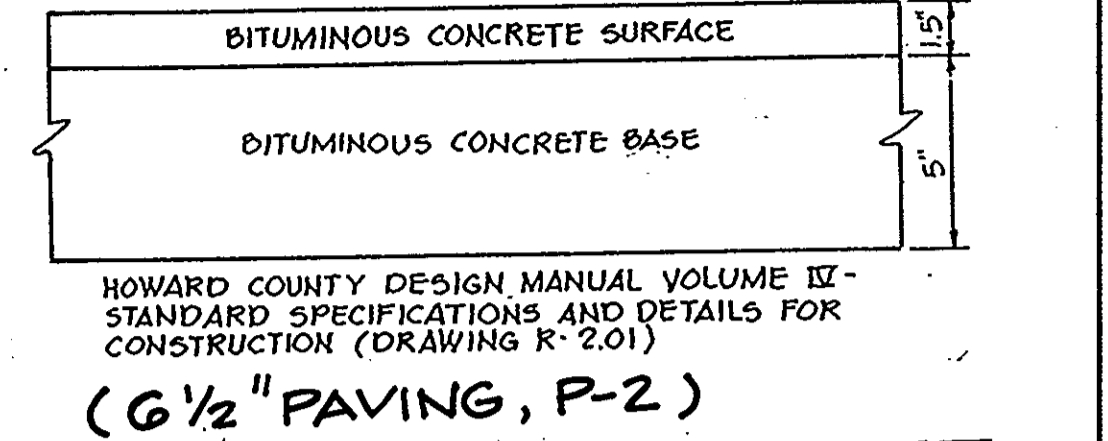
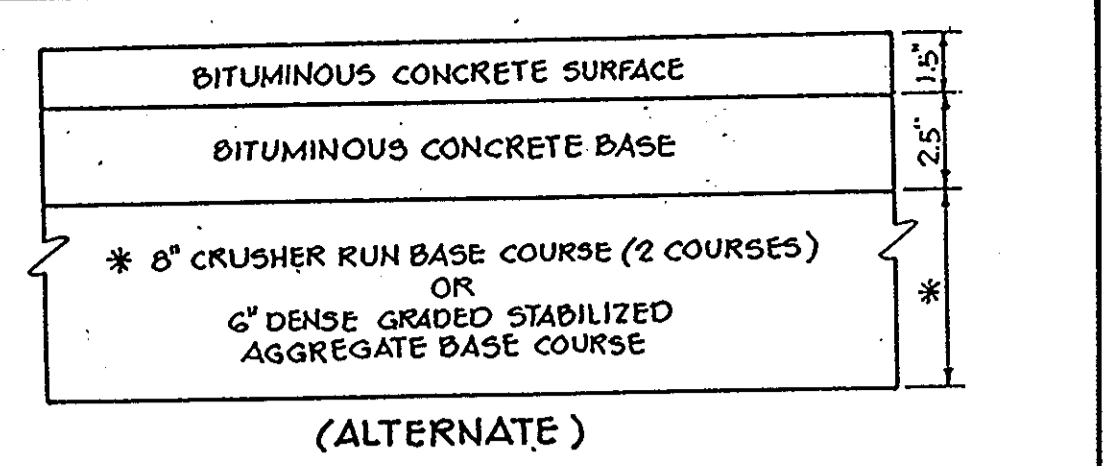
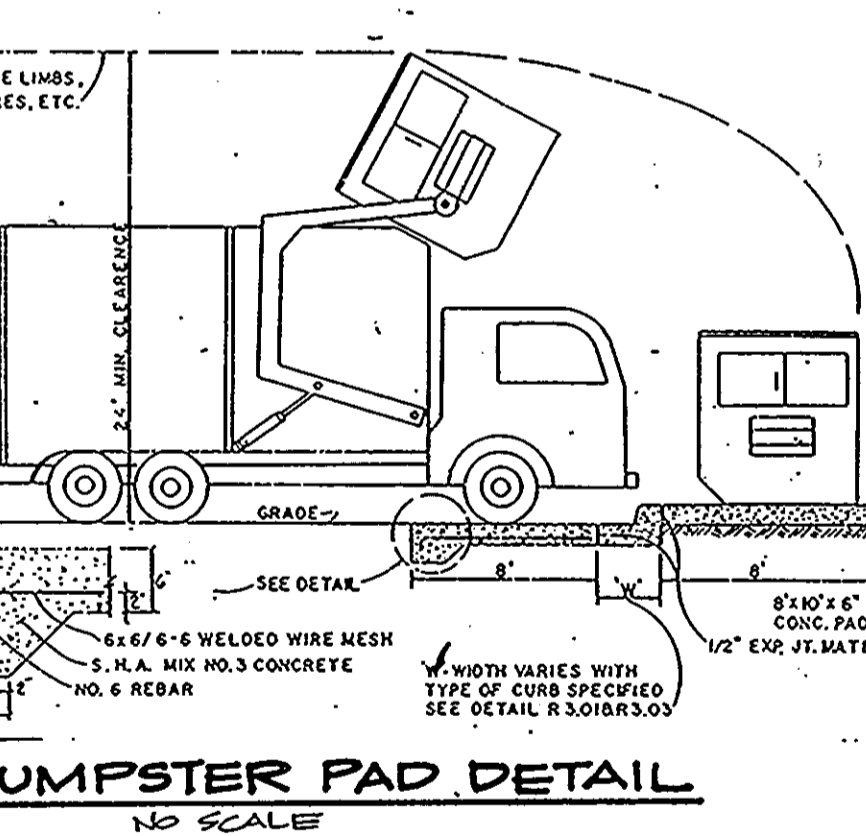
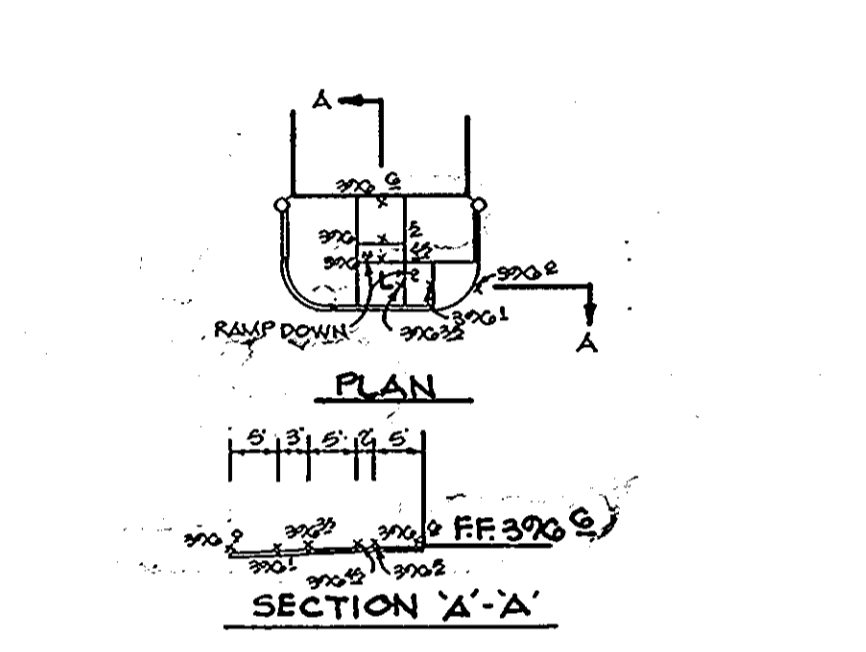
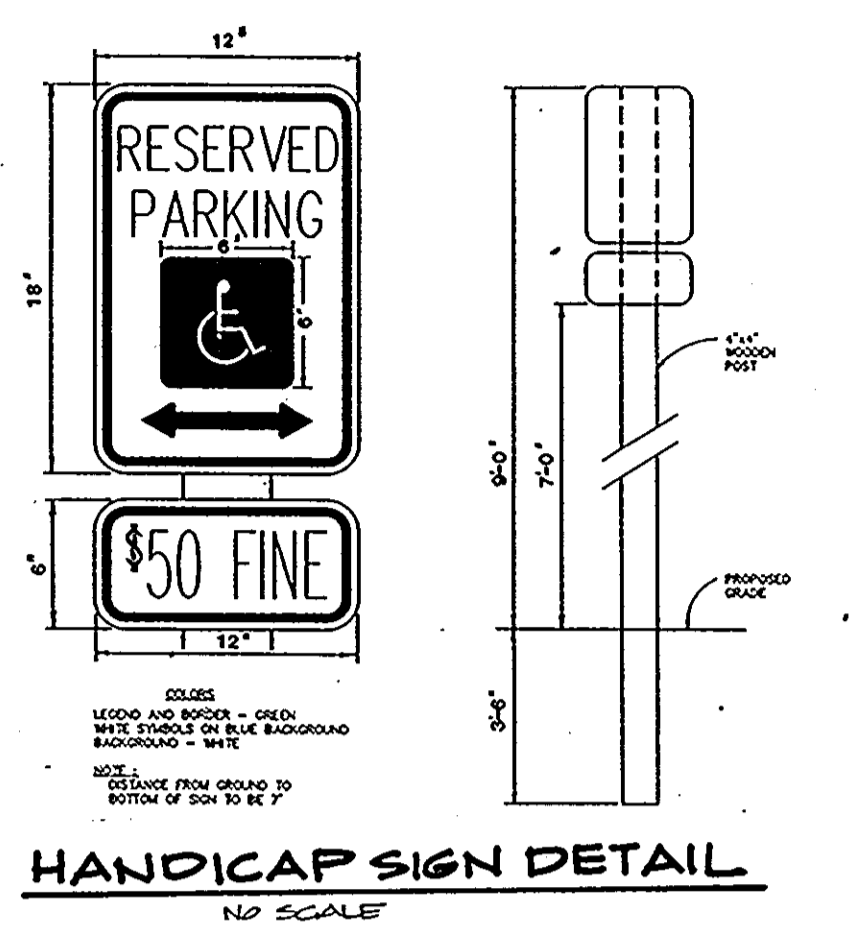
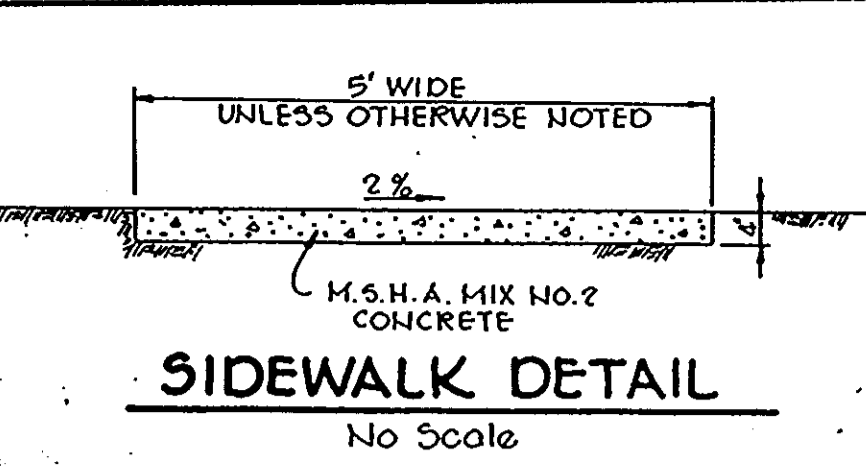
- Water Quality Structures will require periodical cleaning. Owners of these facilities will have to clean them as needed or on a frequency that the County determines is appropriate. Owners of water quality structures will be required to provide routine maintenance and cleaning at least twice a year or at the direction of Howard County.
- Maintenance of these facilities will consist of cleaning out the separator and disposal of the waste and the repair of the facility as needed. Periodic inspections of these facilities will be made by the County Stormwater Management Group/Bureau of Highways.
- The disposal of the liquid and solid matter should be as follows:
A. All liquid material in the separator inlet shall be pumped into a suitable tank truck and disposed of at an approved sanitary district discharge manhole or be taken into an approved sewage treatment plant for discharge.
B. The solid material shall be landfilled in an approved sanitary landfill.
- The inlet pipes, trash racks, grates, and structural parts shall be repaired as needed.

CONSTRUCTION NOTES:

- Silt and debris shall not be allowed to enter the structures until contributing drainage areas have been permanently stabilized.
- All openings to structures shall be protected with the appropriate sediment control measures during construction.

INSPECTION NOTES:

- Prior to start of construction on water quality structures, the Howard County Department of Public Works Inspector must be called 48 hours in advance at 792-2630.
- The Howard County Department of Public Works Inspector must be notified (792-2630) at each of the following stages:
A. Approval of subgrade for footings.
B. Footing formed and steel set prior to pouring.
C. Structure sides formed and steel set prior to pouring.
D. Prior to top slab and manholes being set, Howard County Department of Public Works Inspector must check structure and all debris and silt in structure removed.
E. When site is permanently stabilized and sediment control measures to protect inlet are to be removed.



HOWARD COUNTY DESIGN MANUAL VOLUME III - STANDARD SPECIFICATIONS AND DETAILS FOR CONSTRUCTION (DRAWING R-2.01)

APPROVED: FOR PUBLIC WATER AND PUBLIC SEWERAGE SYSTEMS, HOWARD COUNTY HEALTH DEPARTMENT

James Boyd 2-14-89
COUNTY HEALTH OFFICER DATE

APPROVED: HOWARD COUNTY OFFICE OF PLANNING AND ZONING

W. J. Lange 3-7-89
PLANNING DIRECTOR DATE

APPROVED: FOR PUBLIC WATER, PUBLIC SEWERAGE, STORM DRAINAGE SYSTEMS AND PUBLIC ROADS.

HOWARD COUNTY DEPARTMENT OF PUBLIC WORKS

James M. ... 2/16/89
DIRECTOR DATE

William E. ... 2-10-89
CHIEF, BUREAU OF ENGINEERING DATE

DATE NO. REVISION

OWNER/DEVELOPER
SIENA CORPORATION
8350 BRISTOL COURT, SUITE 101
LESSON, MARYLAND 20704

PROJECT: CONNELL PROPERTY, PARCEL A
SNOWDEN E-Z CAR WASH
A CAR WASH ADDITION TO SDP-88-119

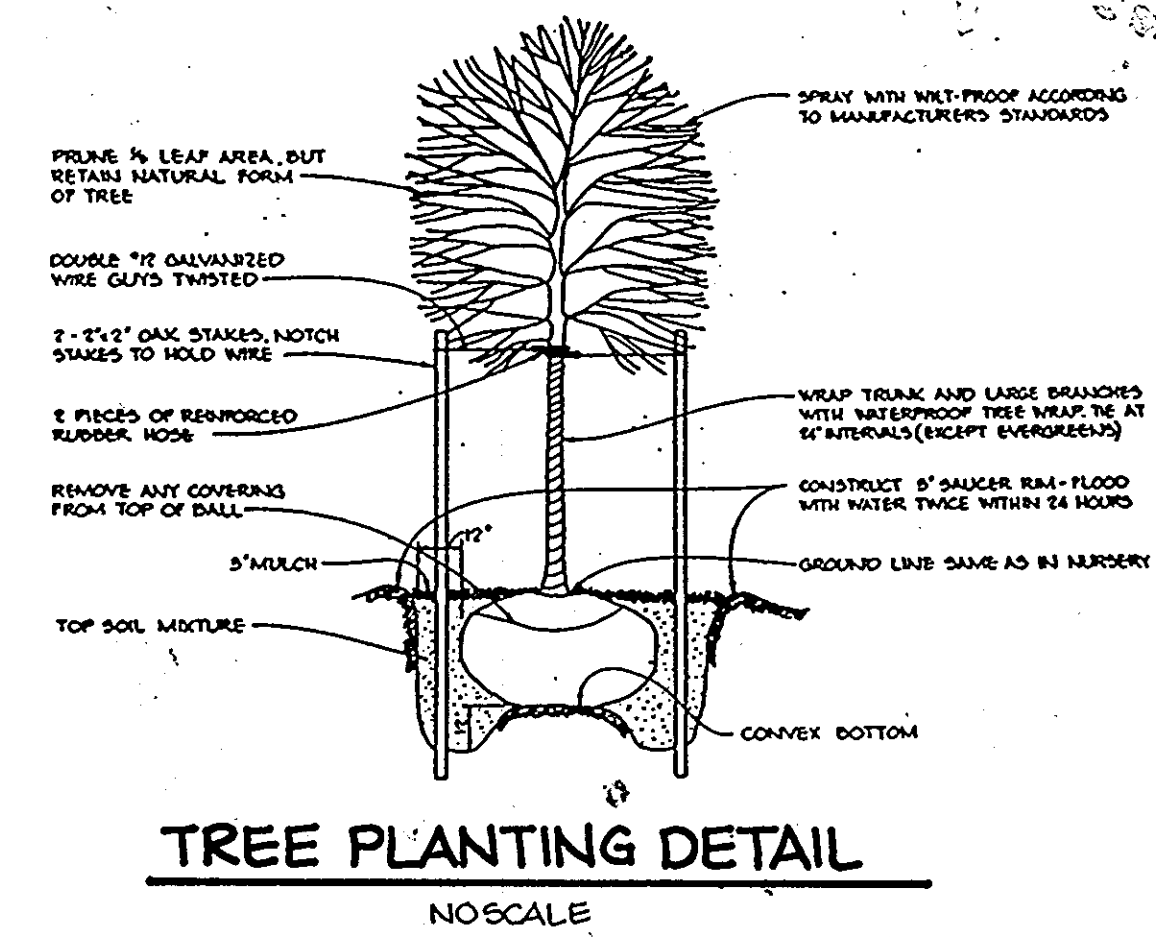
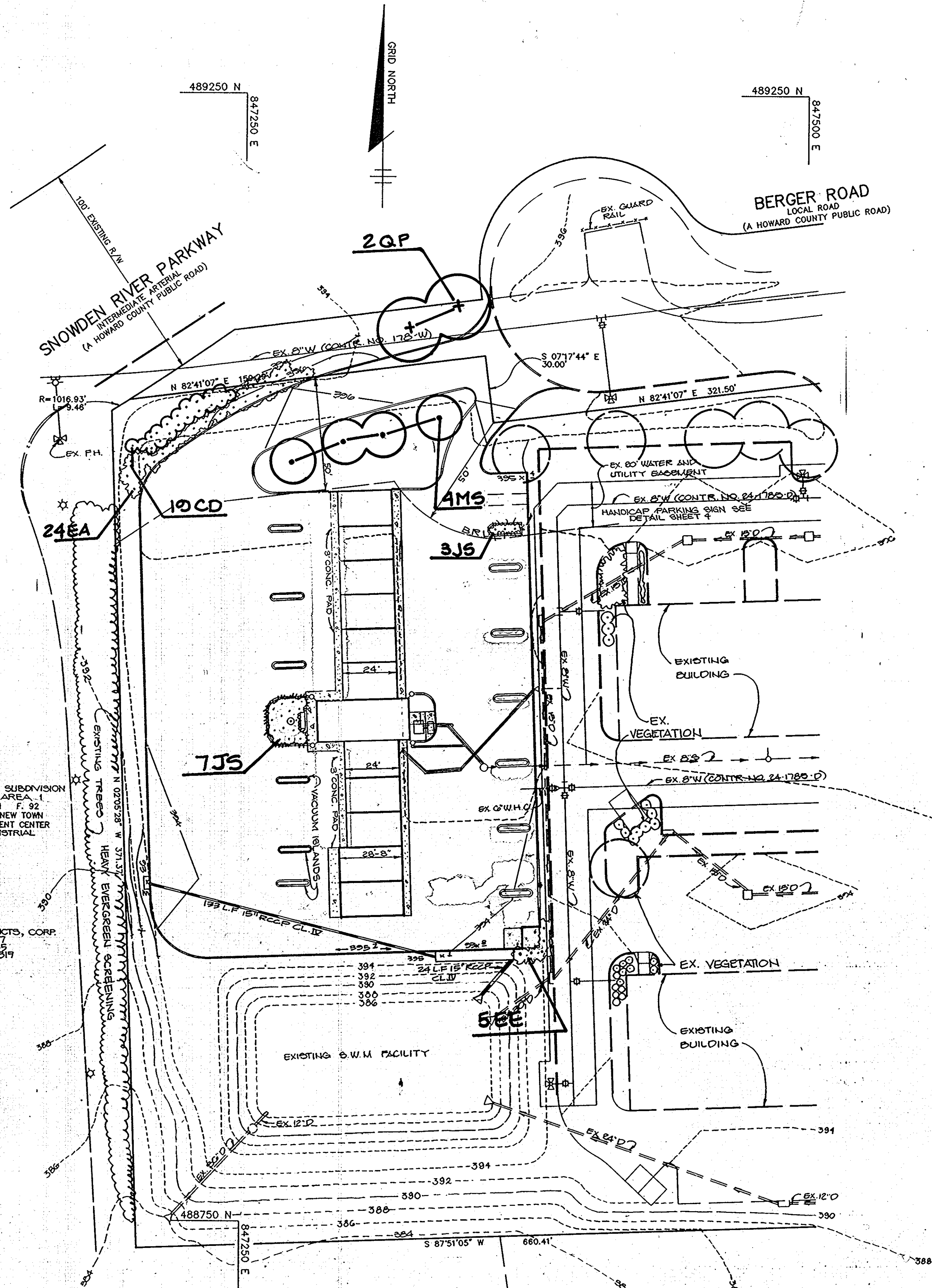
AREA: TAX MAP 42 ZONED M-1 PLAT NO. 7941
PARCEL A 6TH ELECTION DISTRICT
HOWARD COUNTY, MARYLAND

TITLE: **PROFILES AND DETAILS**

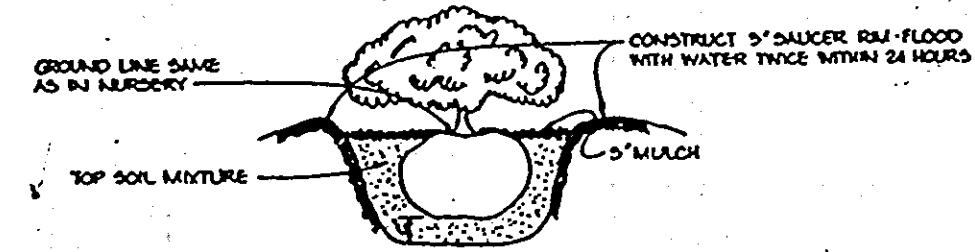
APPROVED
DIVISION OF COMMUNITY PLANNING & LAND DEVELOPMENT
HOWARD COUNTY, MARYLAND
DATE: 11-10-88

THE RIEMER GROUP, INC.
The Riemer Group, Inc. A Land Planning, Design & Civil Engineering Firm
3105 North Ridge Road, Ellicott City, Maryland 21043 (301) 461-2690

DATE: 1-17-89
DESIGNED BY: C.J.R.
DRAWN BY: J.L.B.
PROJECT NO: 55501
DATE: JANUARY 17, 1989
SCALE: AS SHOWN
DRAWING NO. 4 OF 5



TREE PLANTING DETAIL
NO SCALE



SHRUB PLANTING DETAIL
NO SCALE

PLANT LIST

Qty.	Symbol	Name	Size	Remarks
19	CD	COTONEASTER DOHNERI 'CORA' HEARTY Coral Beauty Cotoneaster	18-24" Ht.	Cont.
10	JS	JUNIPERUS SABINA 'TAMARISCIFOLIA' Tamarack Juniper	18-24" Sp.	Cont.
4	MS	MALUS 'SNOW CLOUD' Snow Cloud Crabapple	6" HT.	B & B
2	QP	QUERCUS PALUSTRIS Pin Oak	2 1/2 - 3" Cal. 13-15" HT.	B & B Full Head
24	EA	EUCONYMUS ALATA 'COMPACTA'	24" - 30" HT.	B & B.
6	EE	EUCONYMUS SARCOXIE	30" - 36" HT.	B & B

APPROVED
DIVISION OF
COMMUNITY PLANNING
& LAND DEVELOPMENT
HOWARD COUNTY,
MARYLAND
DATE 11-10-88

APPROVED: FOR PUBLIC WATER AND PUBLIC SEWERAGE SYSTEMS,
HOWARD COUNTY HEALTH DEPARTMENT.

James Boyd 2/14/89
COUNTY HEALTH OFFICER DATE

APPROVED: HOWARD COUNTY OFFICE OF PLANNING AND ZONING.

W. H. ... 3/7/89
PLANNING DIRECTOR DATE

Wanda S. ... 2-24-89
CHIEF, DIVISION OF
COMMUNITY PLANNING AND
LAND DEVELOPMENT DATE

APPROVED: FOR PUBLIC WATER, PUBLIC SEWERAGE, STORM
DRAINAGE SYSTEMS AND PUBLIC ROADS.

HOWARD COUNTY DEPARTMENT OF PUBLIC WORKS

James ... 2/10/89
DIRECTOR DATE

William ... 2-10-89
CHIEF, BUREAU OF ENGINEERING DATE

8-15-88 REVISE BUILDING FOOTPRINT
DATE NO REVISION

OWNER/DEVELOPER
SIENA CORPORATION
6350 BRISTOL COURT, SUITE 101
JESSUP, MARYLAND 20714

PROJECT CONNELL PROPERTY, PARCEL A
SNOWDEN E-Z CAR WASH
A CAR WASH ADDITION TO SDP-89-119

AREA TAX MAP 42 ZONE DM-1 PLAT NO. 7741 PARCEL A
6TH ELECTION DISTRICT
HOWARD COUNTY, MARYLAND

TITLE **LANDSCAPE PLAN**

THE RIEMER GROUP, INC.

The Riemer Group, Inc. A Land Planning, Design & Civil Engineering Firm
3105 North Ridge Road, Ellicott City, Maryland 21043 (301) 461-2690

DATE 1.17.89
DESIGNED BY LLB
DRAWN BY DOB
PROJECT NO 50501
DATE: JANUARY 17, 1989
SCALE 1" = 30'
DRAWING NO 5 OF 5

Melanie Moser
MELANIE MOSER # 551
SDP-89-70