

APPROVED FOR PUBLIC WATER AND PUBLIC SEWERAGE SYSTEMS
HOWARD COUNTY HEALTH DEPARTMENT

APPROVED FOR PUBLIC WATER AND PUBLIC SEWERAGE
STORM DRAINAGE SYSTEM AND PUBLIC ROADS
HOWARD COUNTY DEPARTMENT OF PUBLIC WORKS

DATE: 6/13/88
DATE: 6/16/88
DATE: 6/15/88
DATE: 6/15/88

4-25-88
AKS

STRUCTURE SCHEDULE

NO.	TYPE	INV. IN	INV. OUT	UPPER END	LOWER END	HO. CO. STD	LOCATION
I-1	YARD INLET		217.42	220.60	220.60	SD 4 14	SEE PLAN
I-2	YARD INLET	217.00	216.50	220.60	220.60	SD 4 14	SEE PLAN
M-1	MANHOLE	216.20	215.70	220.80	220.80	G 5 12	SEE PLAN
I-3	A-5 INLET	214.10	213.60	218.40	218.30	SD 4 01	5+52
I-4	A-10 INLET	214.60	214.60	218.30	218.30	SD 4 01	5+51
I-5	A-5 INLET	213.18	212.47	218.30	218.30	SD 4 02	5+56

PIPE SCHEDULE

SIZE	TYPE	CLASS	LENGTH
15"	RCP	V	299'
18"	RCP	V	55'
9"	WHC		102'

SECTION 2 AREA 2, PARCEL B-2

LOT NUMBER	STREET ADDRESS
COMMUNITY BUILDING	8000 KNIGHTS BRIDGE ROAD
POOL BLDG	8010 KNIGHTS BRIDGE ROAD

LEGEND

	EXISTING	PROPOSED
FIRE HYDRANT	+	+
RIGHT OF WAY	EX 8'S	PROP 6'SHC
SEWER MAIN	EX 8"W	PROP 2 1/2"W
WATER MAIN	EX 8"W	PROP 2 1/2"W
STORM DRAIN	EX 15" RCP	PROP 15" RCP
INLETS	□	□
YARD INLETS	□	□
CONTOUR	230	220
PROPERTY LINE	---	---

FIRE LANE SIGNS & TOW AWAY ZONE

TRADITIONAL COLONIAL POLE MOUNTED FIXTURE ON 5" SQ. W/D POLE 10' MOUNTING HEIGHT INCLUDE PHOTO-ELECTRIC CELL

TRADITIONAL COLONIAL POLE MOUNTED FIXTURE ON 5" SQ. W/D POLE 12' MOUNTING HEIGHT INCLUDE PHOTO-ELECTRIC CELL

OUTDOOR ELEC. OUTLET BOXES W/OUTLETS PER BOX, INCLUDE 2 GREEN LEE "AUB-LITE" MINI-BULLET LIGHTS, 1" GLL 100-8" W/100W-R-20, MINI-FLOOD LIGHT W/WIDE ANGLE LENS, TOW METAL HALLIDE @ 10' 0"

SEDIMENT CONTROL MEASURE FOR THIS CONTRACT WILL BE IMPLEMENTED IN ACCORDANCE WITH ARTICLE 15 OF THE STANDARD SPECIFICATIONS AND ROAD CONSTRUCTION PLAN F-88-40 AND SDP-88-123.

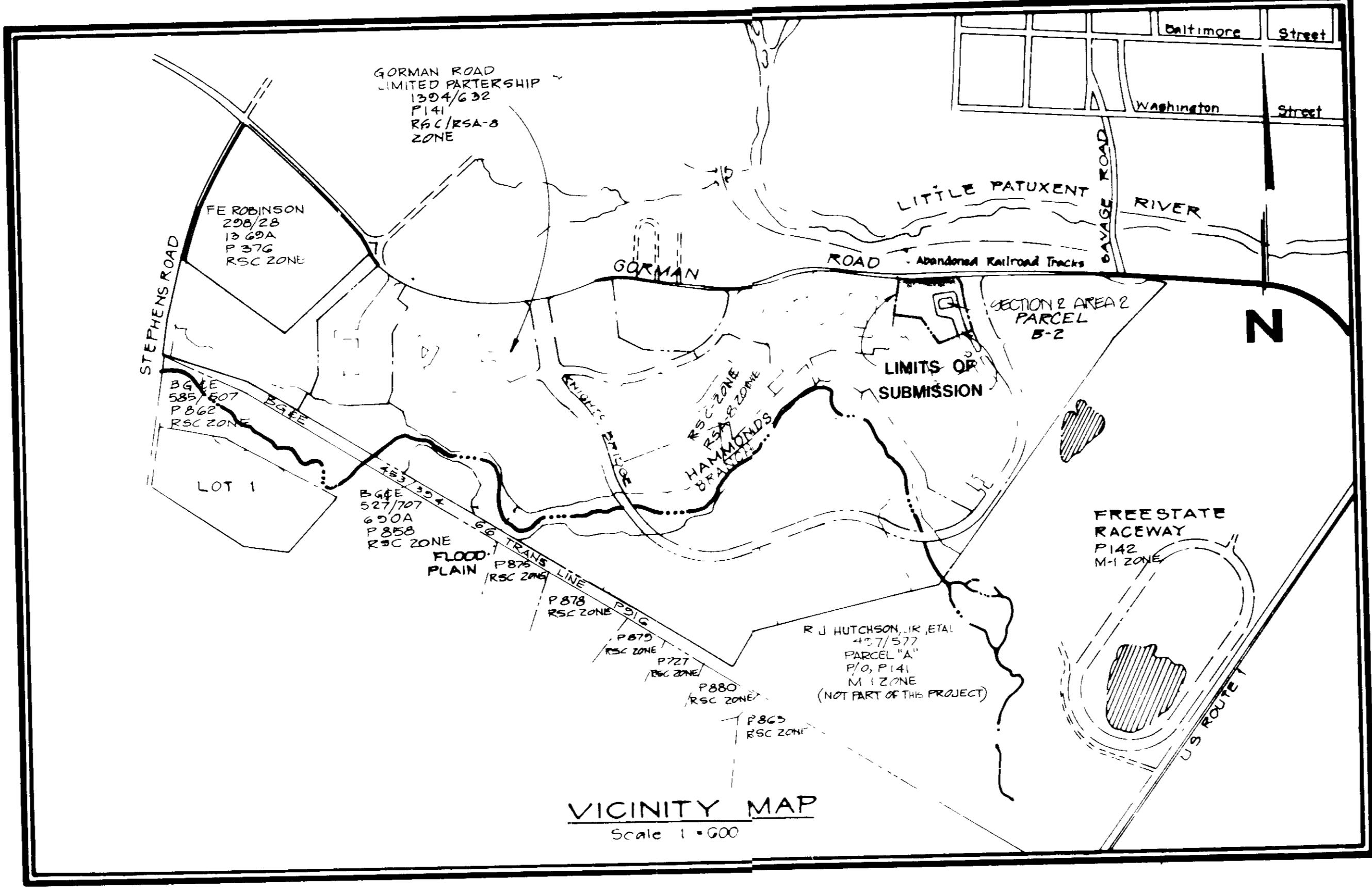
REVIEWED FOR HOWARD SOIL CONSERVATION DISTRICT AND MEETS TECHNICAL REQUIREMENT

SIGNATURE: [Signature] DATE: 5/24/88

THIS DEVELOPMENT PLAN IS APPROVED FOR SOIL EROSION AND SEDIMENT CONTROL BY THE HOWARD COUNTY CONSERVATION DISTRICT

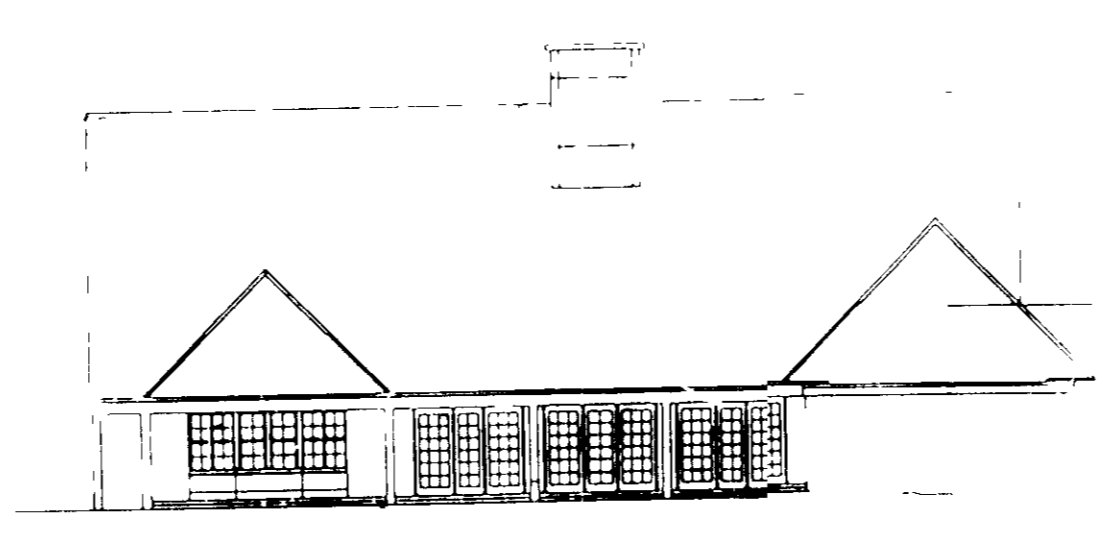
APPROVED: [Signature] DATE: 5/24/88

**BOWLING BROOK FARMS
SECTION 2
PARCEL B-2
RECREATION CENTER**

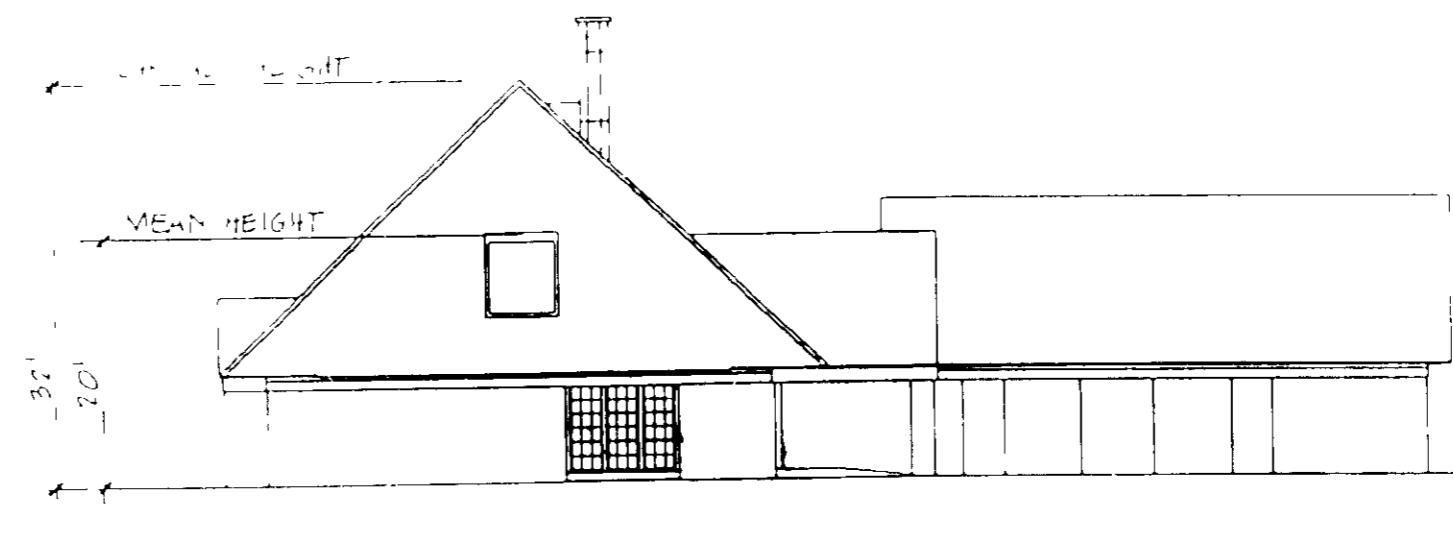


SITE DEVELOPMENT PLANS

HOWARD COUNTY, MARYLAND



WEST ELEVATION



NORTH ELEVATION

GENERAL NOTES:

- THE APPROXIMATE LOCATION OF ALL UTILITIES IS SHOWN BASED ON INFORMATION OBTAINED FROM AVAILABLE RECORDS. THE CONTRACTOR SHALL LOCATE, PROTECT AND SUPPORT THE EXISTING UTILITIES AND MAINTAIN UNINTERRUPTED SERVICE. ANY DAMAGE INCURRED SHALL BE REPAIRED IMMEDIATELY TO THE SATISFACTION OF THE ENGINEER/INSPECTOR AT THE CONTRACTOR'S EXPENSE.
- CONTRACTOR SHALL LOCATE EXISTING UTILITIES A MINIMUM OF TWO (2) WEEKS IN ADVANCE OF CONSTRUCTION OPERATIONS IN THE VICINITY OF PROPOSED UTILITIES AT HIS OWN EXPENSE.
- CONTRACTOR SHALL NOTIFY THE FOLLOWING UTILITIES OR AGENCIES AT LEAST FIVE (5) WORKING DAYS BEFORE STARTING WORK SHOWN ON THESE PLANS:
 - STATE HIGHWAY ADMINISTRATION- 531-5533
 - CONTRACTOR SERVICES
 - BALTIMORE GAS & ELECTRIC COMPANY- 234-F313
 - UNDERGROUND UTILITY CONTROL
 - BALTIMORE GAS & ELECTRIC COMPANY- 298-9013
 - "TROUBLE SHOOTING"
 - "MISS UTILITY" 1-800-257-7777
 - MESAPAKE & POTOMAC (OSP) TELEPHONE COMPANY- 725-9976
 - BUREAU OF UTILITIES/HOWARD COUNTY- 992-2966
 - THE CONTRACTOR OR DEVELOPER SHALL CONTACT THE CONSTRUCTION INSPECTION DIVISION 24 HOURS IN ADVANCE OF COMMENCEMENT OF WORK AT 792-2630
- ALL DETAILS NOT SHOWN ON THE DRAWING SHALL BE CONSTRUCTED IN ACCORDANCE WITH HOWARD COUNTY STANDARD DETAILS.
- ALL MATERIALS AND CONSTRUCTION METHODS SHALL BE IN ACCORDANCE WITH HOWARD COUNTY SPECIFICATIONS AND HOWARD COUNTY DESIGN MANUAL VOLUME I.
- ALL TRAFFIC CONTROL DEVICES SHALL BE IN ACCORDANCE WITH STANDARD SPECIFICATIONS FOR CONSTRUCTION AND MATERIALS LATEST EDITION AND THE MANUAL ON UNIFORM TRAFFIC CONTROL DEVICES LATEST EDITION.
- TREES SHALL BE PROTECTED FROM DAMAGE TO THE MAXIMUM EXTENT POSSIBLE. TREES SIX INCH (6") DIAMETER OR GREATER (MEASURED FOUR FEET (4') ABOVE EXISTING GRADE) ADJACENT TO THE LIMITS OF CONSTRUCTION SHALL NOT BE REMOVED OR DAMAGED BY THE CONTRACTOR.
- ALL HORIZONTAL CONTROLS ARE BASED ON MARYLAND STATE PLANE COORDINATES SYSTEM PROVIDED BY HOWARD COUNTY.
- ALL VERTICAL CONTROLS ARE BASED ON U.S.G.S. DATA.
- TOPOGRAPHY TAKEN FROM MAPS PREPARED BY PHOTOGRAMMETRY BY "AERIAL CURVES" IN 1984. TOPOGRAPHY FIELD CHECKED 1986.
- ALL PIPE ELEVATIONS ARE INVERT ELEVATIONS.
- ALL ELEVATIONS SHALL BE BASED IN ACCORDANCE WITH HOWARD COUNTY STANDARD DETAILS. AN ALTERNATE FINISH SECTION MAY BE USED FOR PARKING AREAS.
- STAIRS, HALLS, CHAIRS AND 4" X 4" ALL HALL JAFFEL HALLS SHALL BE 13' X 13'.
- HALLS SHALL MEET ALL LOCAL REGULATIONS AND ALL REQUIREMENTS OF THE BUILDING DEPARTMENT.
- JUMPS OF HALLS SHALL BE IN DAY AND INCLUDED IN A BUX EX. 13' X 13'.
- THIS PROPERTY IS BOUNDED ON THE NORTH BY GORMAN ROAD, ON THE EAST BY PARCEL M, ON THE WEST BY PARCEL E AREA 2, AND ON THE SOUTH BY PARCEL B-1, OWNED BY GORMAN ROAD LIMITED PARTNERSHIP, ZONED RSA-8.
- THIS SUBMISSION IS ZONED RSA-8.
- ALL INLETS SHALL BE CONSTRUCTED IN ACCORDANCE WITH HOWARD COUNTY STANDARD.
- PROFILE STATIONS SHALL BE ADJUSTED AS NECESSARY TO CONFORM TO PLAN DIMENSIONS.
- ALL WATER MAINS TO BE 15" DIA. UNLESS OTHERWISE NOTED.
- ALL STORM MAINS TO BE 15" DIA. UNLESS OTHERWISE NOTED.
- ALL PLAN DIMENSIONS ARE TO FACE OF CURB UNLESS OTHERWISE NOTED.
- FIRE LANE SHALL BE MARKED IN ACCORDANCE WITH TITLE 11 OF THE HOWARD COUNTY CODE AND APPROVED IMMEDIATELY BY THE OFFICE OF THE ALDERMANS.
- TOP OF ALL WATER MAINS TO HAVE A MINIMUM OF 3' 0" COVER UNLESS OTHERWISE NOTED.
- VALVES ADJACENT TO TEE'S SHALL BE "TRAPPEL TO TEE'S".
- ALL FITTINGS SHALL BE BUTTERFLY OR ANCHORED WITH CONCRETE IN ACCORDANCE WITH THE STANDARD "DETAIL" UNLESS OTHERWISE PROVIDED FOR ON THE DRAWING.
- THE CONTRACTOR SHALL NOT OPERATE ANY WATER MAIN VALVES ON THE EXISTING WATER SYSTEM.

ANALYSIS

Category	Area	Percentage
Parcel B-2	3.17 Ac	
Parcel B-1	2.668 S.F.	
Community Building	982 S.F.	
Pool Building	N/A	
Parking Spaces (required)	54 Spaces	
Parking Spaces (provided)	200 Ac 63%	
Open Space	0.15 Ac 4.10%	
Building Coverage		

SEE SHEET [] FOR SITE DEVELOPMENT PLAN, WATER, SEWER AND ROAD PROFILES, EROSION AND SEDIMENT CONTROL PLAN, LANDSCAPE PLAN, DRAINAGE AREA MAP, DETAIL SHEET.

GORMAN ROAD LIMITED PARTNERSHIP
C/O JAMES F. KNIGHT DEVELOPMENT CORPORATION
110 WEST ROAD, SUITE 203
TOWSON, MARYLAND 21284

SUBDIVISION NAME	PARCEL	LOT/PARCEL #
BOWLING BROOK FARMS	2/2	14/PARCEL B-2
PLAT # OR L/F	BLOCK # ZONE	TAX/ZONE MAP
7602	7 RSA-8 47	6TH
WATER CODE	SEWER CODE	CENSUS TR
PUBLIC	PUBLIC	0000

BOWLING BROOK FARMS

SECTION 2 AREA 2
PARCEL B-2
RECREATION CENTER
SIXTH ELECTION DISTRICT
TAX MAP 47 PARCEL 141
L.1394 F.632
O.P.Z. FILE NOS.: S-87-78, P-87-10, F-88-40

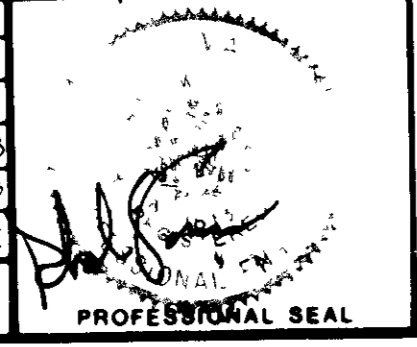
SURVEY	DATE
DESIGN MJK	12-23-87
DRAWN G.L.	SHEET
CHECKED	1 OF 8
SCALE AS SHOWN	FILE NO
C.L.	2184-L-5

TITLE SHEET

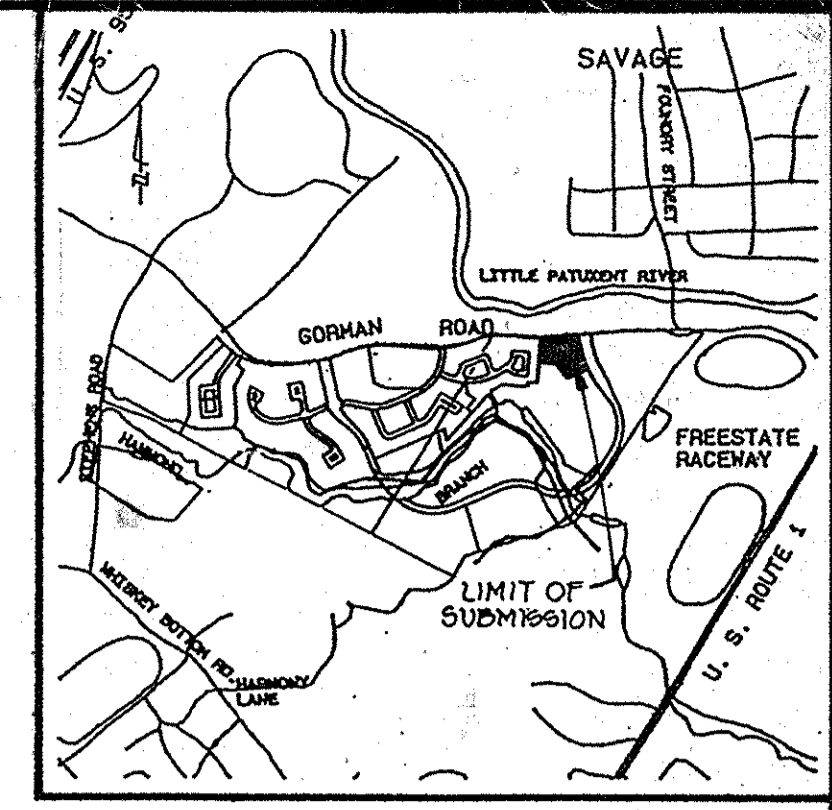
Patton Harris Rust and Associates
A Professional Corporation
Engineers, Surveyors, Planners and Landscape Architects
7609 Standish Place Rockville, Maryland 20855 (301)762-2220

NO.	DESCRIPTION	DATE	APPROVED	DATE
2	REVISED PMT SECTION	10/26/88		
1	REVISED TO HOCO	5/10/88		

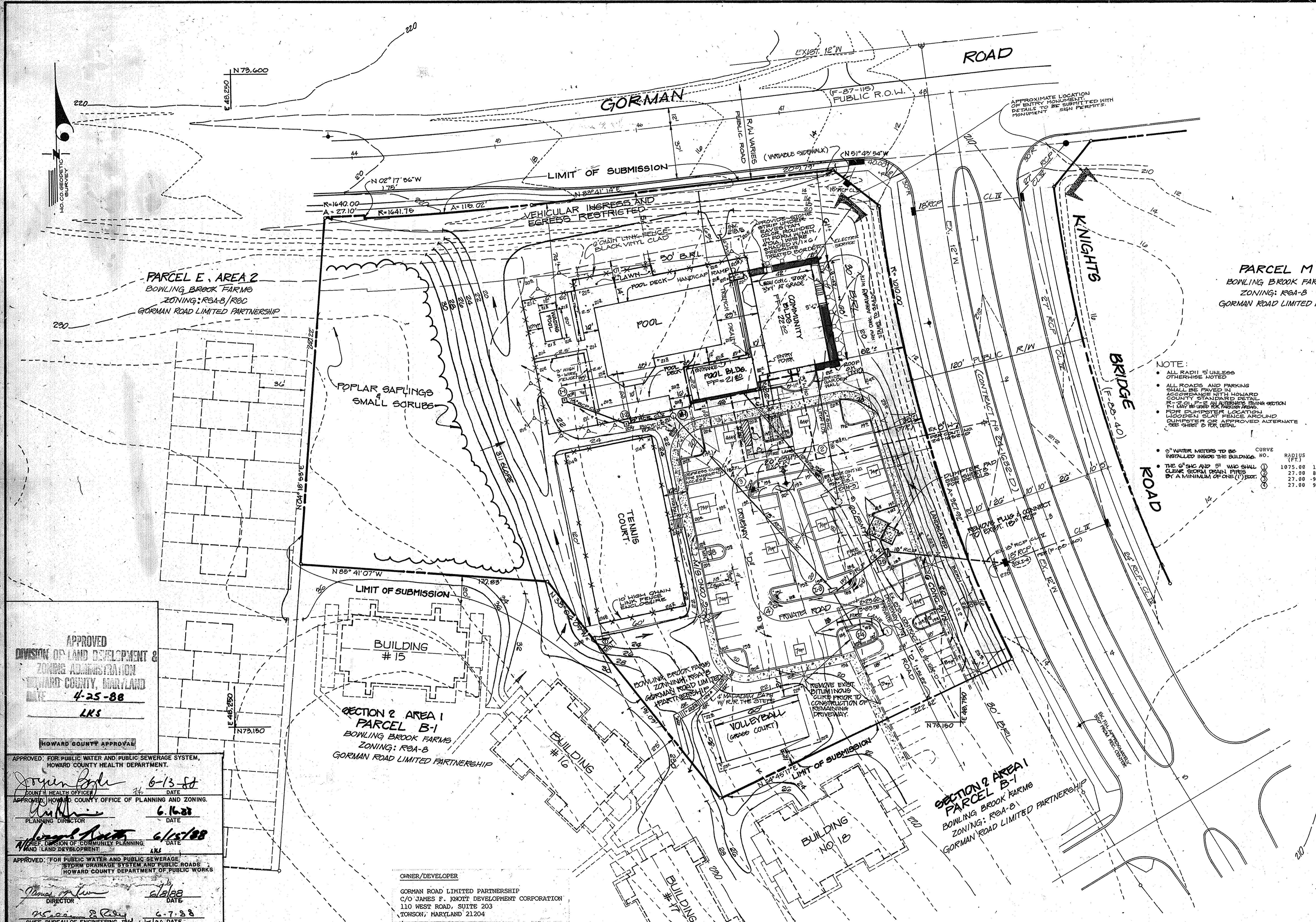
REVISION APPROVED BY: [Signature]



SDP-88-123



VICINITY MAP
SCALE: 1" = 2000'



PARCEL M
BOWLING BROOK FARMS
ZONING: RGA-B
GORMAN ROAD LIMITED PARTNERSHIP

NOTE:
• ALL RADII UNLESS OTHERWISE NOTED
• ALL ROADS AND PARKING SHALL BE PAVED IN ACCORDANCE WITH HOWARD COUNTY STANDARD DETAIL R-101.5 AS AN ALTERNATE DRIVE SECTION R-1 MAY BE USED FOR PARKING AREAS
• FOR COMPUTER LOCATION WOODEN SLAT FENCE AROUND DUMPSTER OR APPROVED ALTERNATE SEE SHEET 2 FOR DETAIL

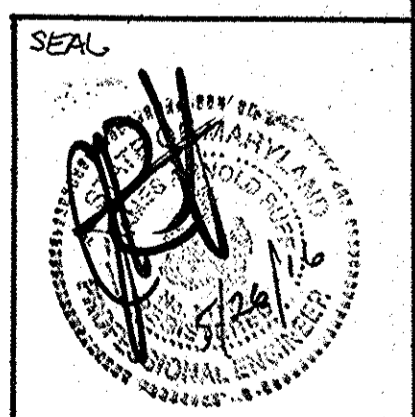
CURVE NO.	RADIUS (FT.)	DELTA	ARC LENGTH	TAN (FT.)	CHORD (FT.)	CHORD BEARING
1	1075.00	14 29' 35"	271.92	136.69	271.20	N23 49' 13"W
2	27.00	84 40' 48"	39.90	24.60	36.37	N58 54' 49"W
3	27.00	98 00' 00"	42.41	27.00	38.18	S33 44' 47"W
4	27.00	98 00' 00"	42.41	27.00	38.18	S56 15' 13"W

CURVE NO. 1
PC @ STA. 0+42 TO PT @ STA. 3+23.92
CURVE NO. 2
PC @ STA. 3+13.92 TO PT @ STA. 3+53.83
CURVE NO. 3
PC @ STA. 3+75.94 TO PT @ STA. 4+18.35
CURVE NO. 4
PC @ STA. 4+22.35 TO PT @ STA. 4+64.76

APPROVED
DIVISION OF LAND DEVELOPMENT &
ZONING ADMINISTRATION
HOWARD COUNTY, MARYLAND
DATE 4-25-88
LKS

HOWARD COUNTY APPROVAL
APPROVED: FOR PUBLIC WATER AND PUBLIC SEWERAGE SYSTEM,
HOWARD COUNTY HEALTH DEPARTMENT.
John E. Gyle 6-13-88
COUNTY HEALTH OFFICER DATE
APPROVED: HOWARD COUNTY OFFICE OF PLANNING AND ZONING.
John E. Gyle 6-16-88
PLANNING DIRECTOR DATE
APPROVED: FOR PUBLIC WATER AND PUBLIC SEWERAGE,
STORM DRAINAGE SYSTEM AND PUBLIC ROADS
HOWARD COUNTY DEPARTMENT OF PUBLIC WORKS
Thomas J. Kelly 6-15-88
DIRECTOR DATE
CHIEF, BUREAU OF ENGINEERING 6-7-88 DATE

OWNER/DEVELOPER
GORMAN ROAD LIMITED PARTNERSHIP
C/O JAMES F. KNOTT DEVELOPMENT CORPORATION
110 WEST ROAD, SUITE 203
TOWSON, MARYLAND 21204



FOR REVISION ONLY
I hereby certify that these documents were prepared or approved by me, and that I am a duly licensed professional engineer under the laws of the State of Maryland.
License No. 23771
Expiration Date: 11/19/17

NO.	DESCRIPTION	DATE	APPROVED	DATE
4	ADJUSTMENT STREETS & CONC. STOOD	5-21-88		
3	REVISED PAVT SECTION	10-06-88		
2	ISSUED TO HQ.	5/10/88		
1	CHANGE WHO FROM 2 TO 202/210/211			

REVISION APPROVED BY



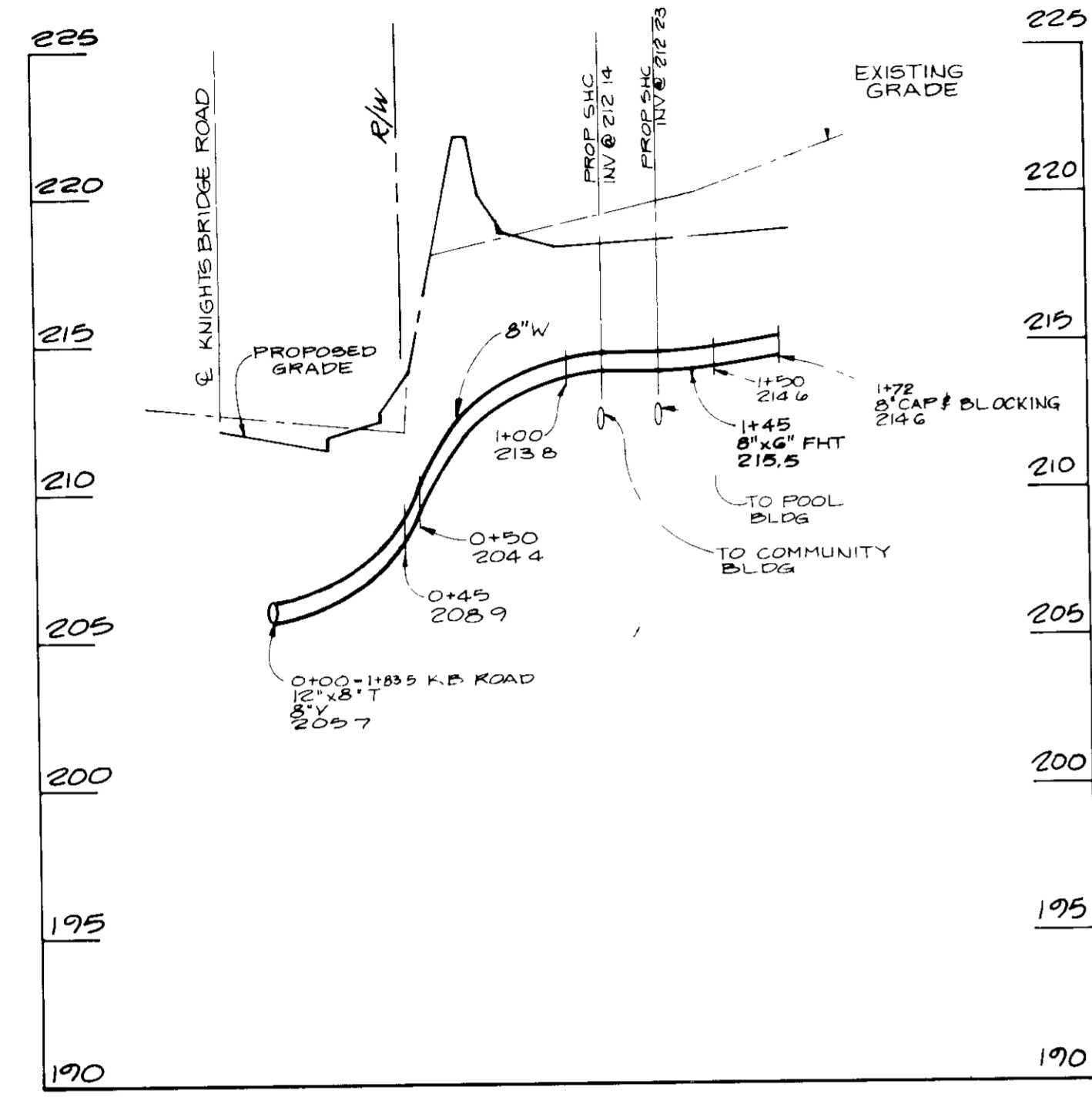
REVISED

SITE DEVELOPMENT PLAN

Patton Harris Rust and Associates
A Professional Corporation
Engineers, Surveyors, Planners and Landscape Architects
7609 Standish Place Rockville, Maryland 20855 (301)762-2220

BOWLING BROOK FARMS
SECTION 2 AREA 2
PARCEL B-2
RECREATION CENTER
SIXTH ELECTION DISTRICT
TAX MAP 47 PARCEL 141
L.1394 F.632
O.P.Z. FILE NOS.: S-87-78, P-87-10, F-88-40

SURVEY	DATE
DESIGN R.S.H.	12-23-87
DRAWN J.D.W./C.S.R.	SHEET
CHECKED	2 OF 8
SCALE 1" = 200'	FILE NO.
C.L. 2'	2184-1-B



4-25-88
LKS

APPROVED FOR PUBLIC WATER AND PUBLIC SEWERAGE SYSTEM
HOWARD COUNTY HEALTH DEPARTMENT

COUNTY HEALTH OFFICER: [Signature] 6/15/88 DATE

APPROVED HOWARD COUNTY OFFICE OF PLANNING AND ZONING
PLANNING DIRECTOR: [Signature] 6-16-88 DATE

APPROVED DIVISION OF COMMUNITY PLANNING AND LAND DEVELOPMENT
DATE: 6/15/88

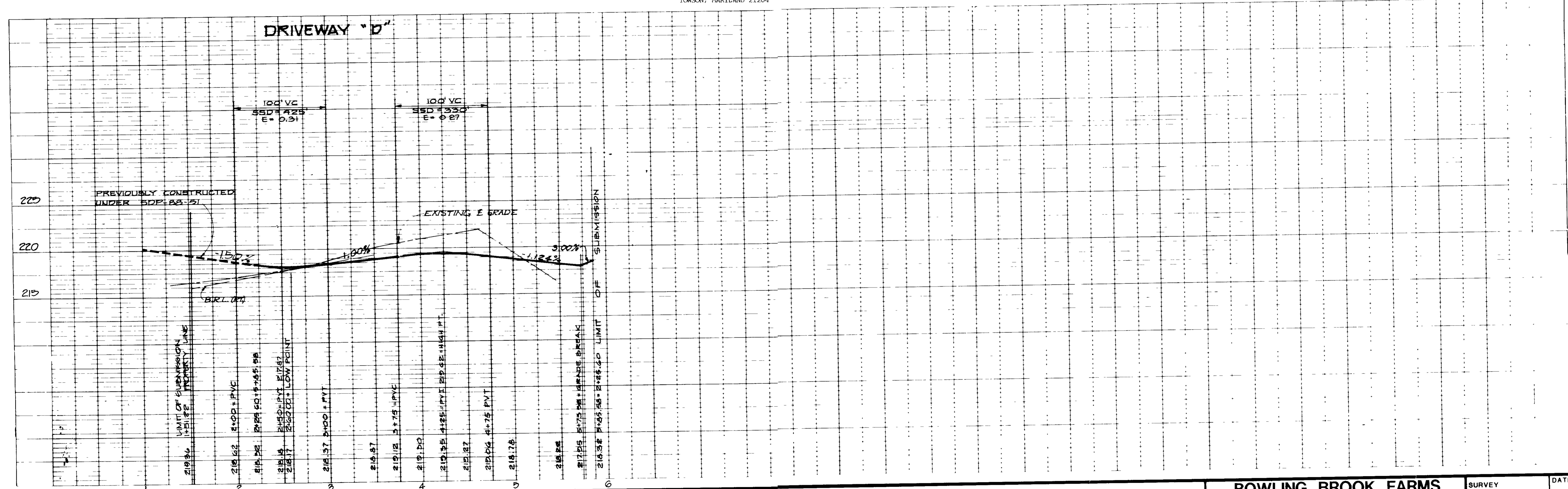
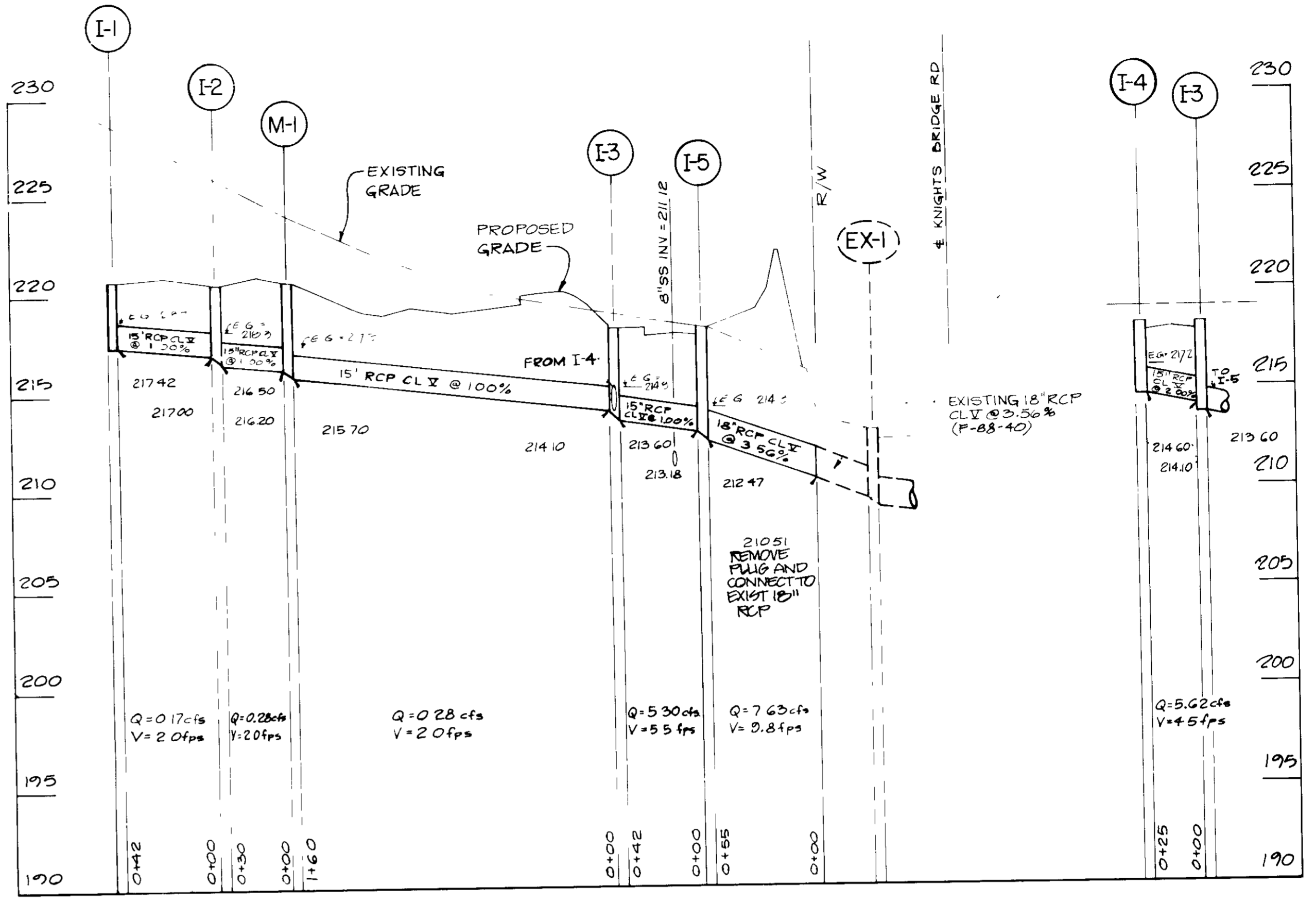
APPROVED FOR PUBLIC WATER AND PUBLIC SEWERAGE
STORM DRAINAGE SYSTEM AND PUBLIC ROADS
HOWARD COUNTY DEPARTMENT OF PUBLIC WORKS

DIRECTOR: [Signature] DATE: [Signature]

CHIEF, BUREAU OF ENGINEERING: [Signature] DATE: [Signature]

PROFILES
SCALE VERT 1" = 5'
HORIZ 1" = 50'

OWNER/DEVELOPER
GORMAN ROAD LIMITED PARTNERSHIP
C/O JAMES F. KNOTT DEVELOPMENT CORPORATION
110 WEST ROAD, SUITE 203
TOWSON, MARYLAND 21284



NO.	DESCRIPTION	DATE	APPROVED	DATE
1	ISSUED TO HOWCO	8/10/88	[Signature]	8/10/88

REVISION APPROVED BY: [Signature]

REVISION

STORM DRAIN, WATER, AND ROAD PROFILES

Patton Harris Rust and Associates
A Professional Corporation
Engineers, Surveyors, Planners and Landscape Architects
1609 Standish Place Rockville, Maryland 20855 (301)762-2220

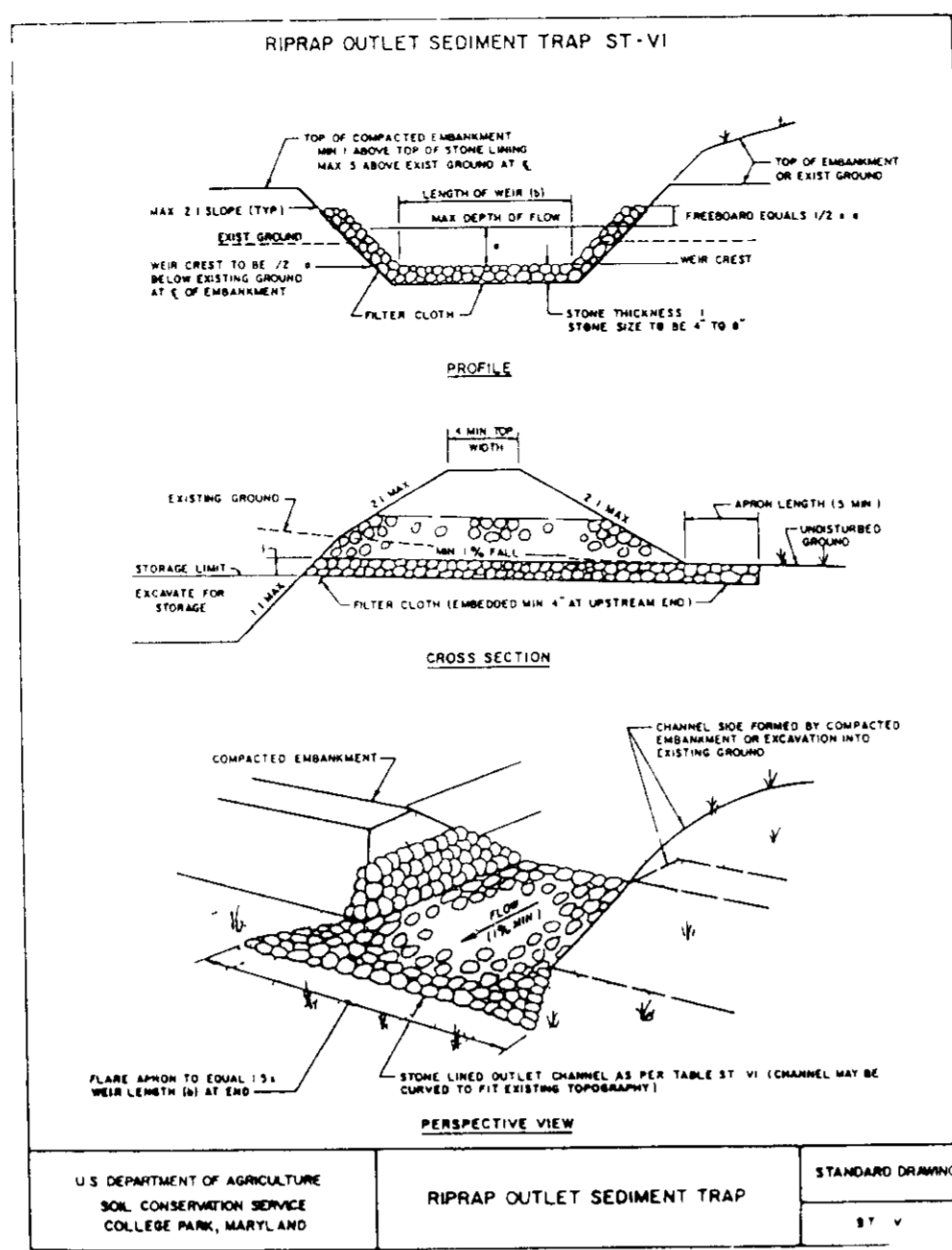
BOWLING BROOK FARMS
SECTION 2 AREA 2
PARCEL B-2
RECREATION CENTER
SIXTH ELECTION DISTRICT
TAX MAP 47 PARCEL 141
L.1394 F.632
O.P.Z. FILE NOS.: S-87-78, P-87-10, F-88-40

SURVEY	DATE
DESIGN MJK	12-23-87
DRAWN J DW	SHEET
CHECKED	3 OF 8
SCALE AS SHOWN	FILE NO
C1	2184-1-F3

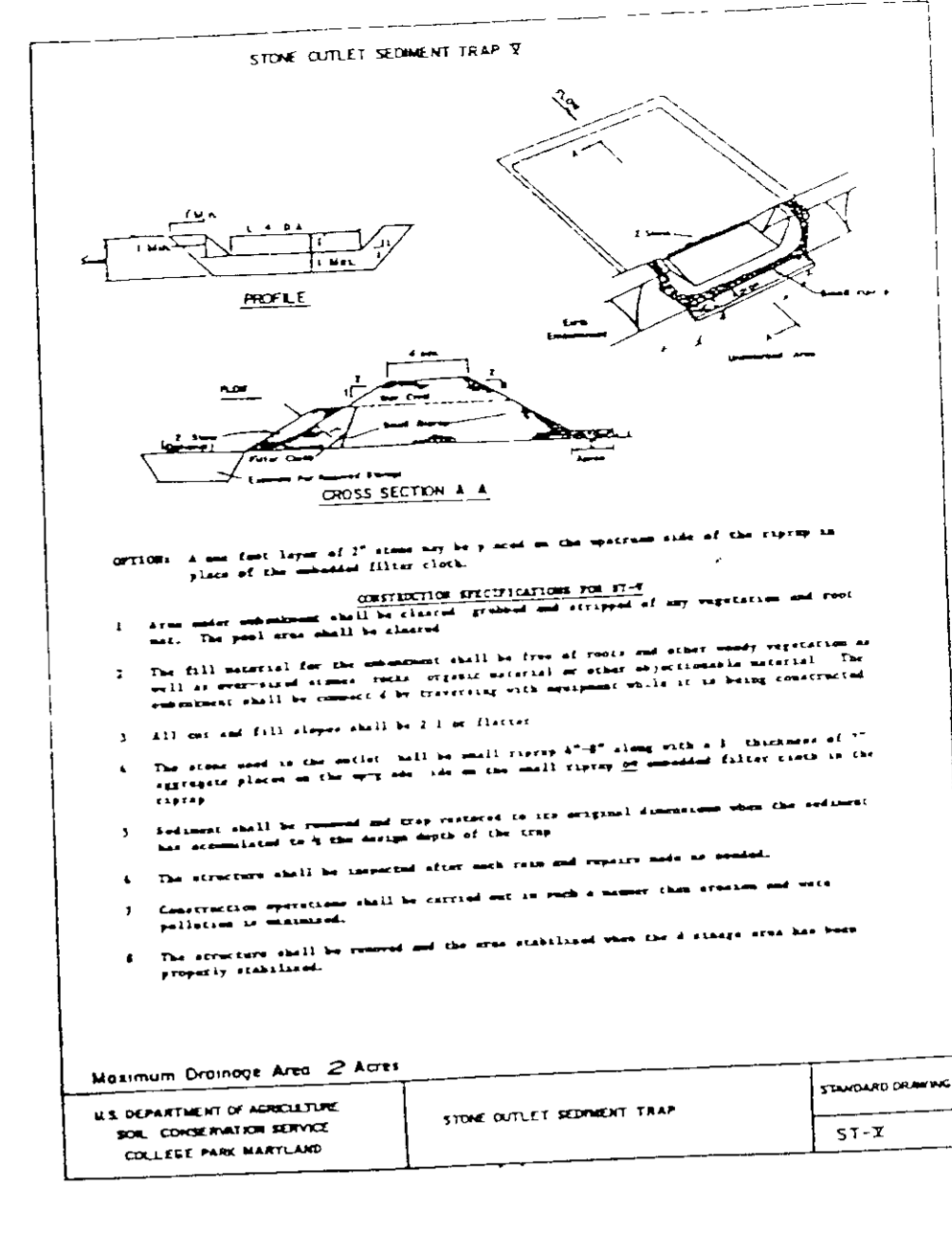
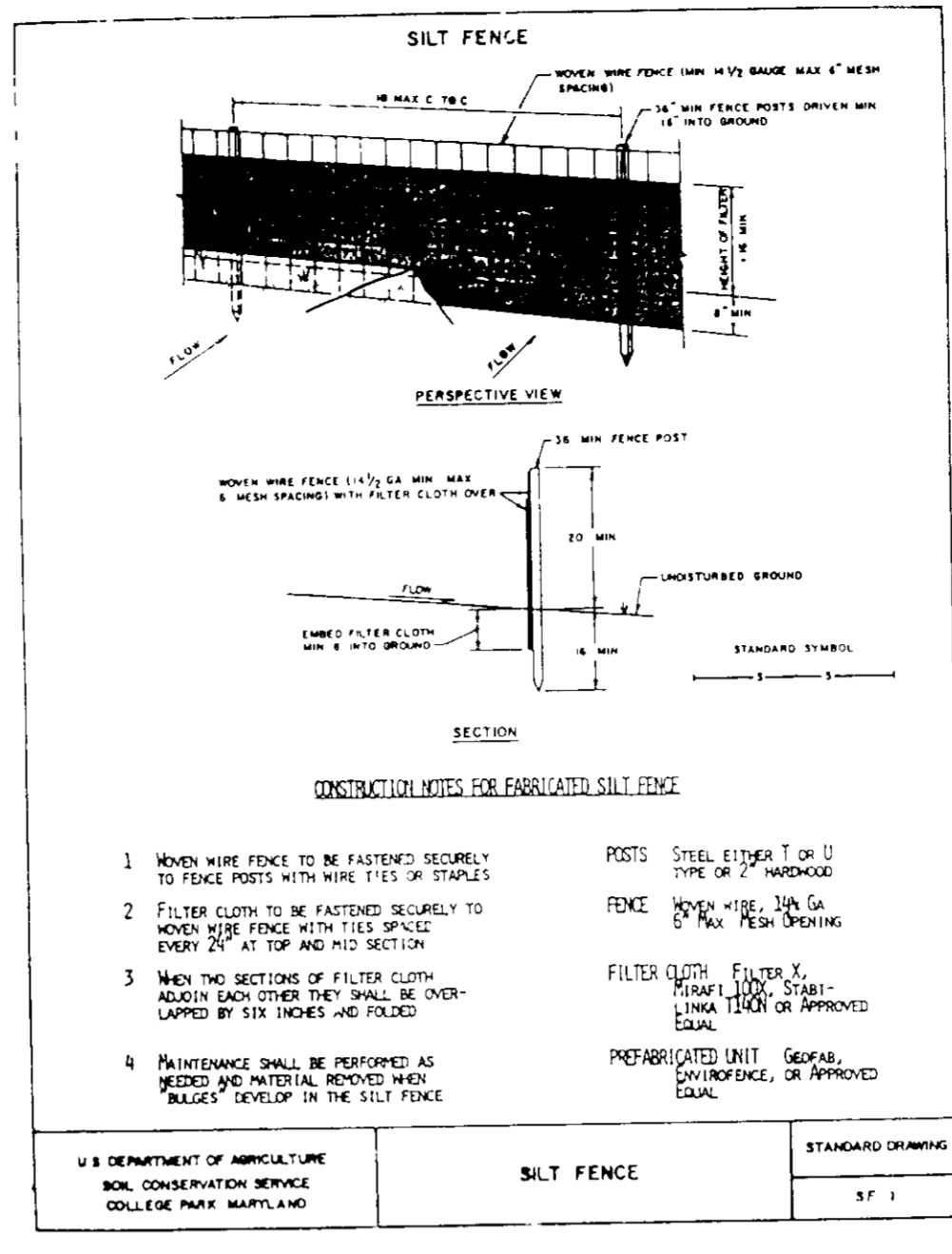
SDP-88-123

MINIMUM CONTROL NOTES

- 1. Minimum of 24 hours notice must be given to the Howard County Office of Inspection... 2. Following initial soil disturbance or redistribution, permanent or temporary stabilization shall be completed within 14 calendar days for all permanent sediment control structures...

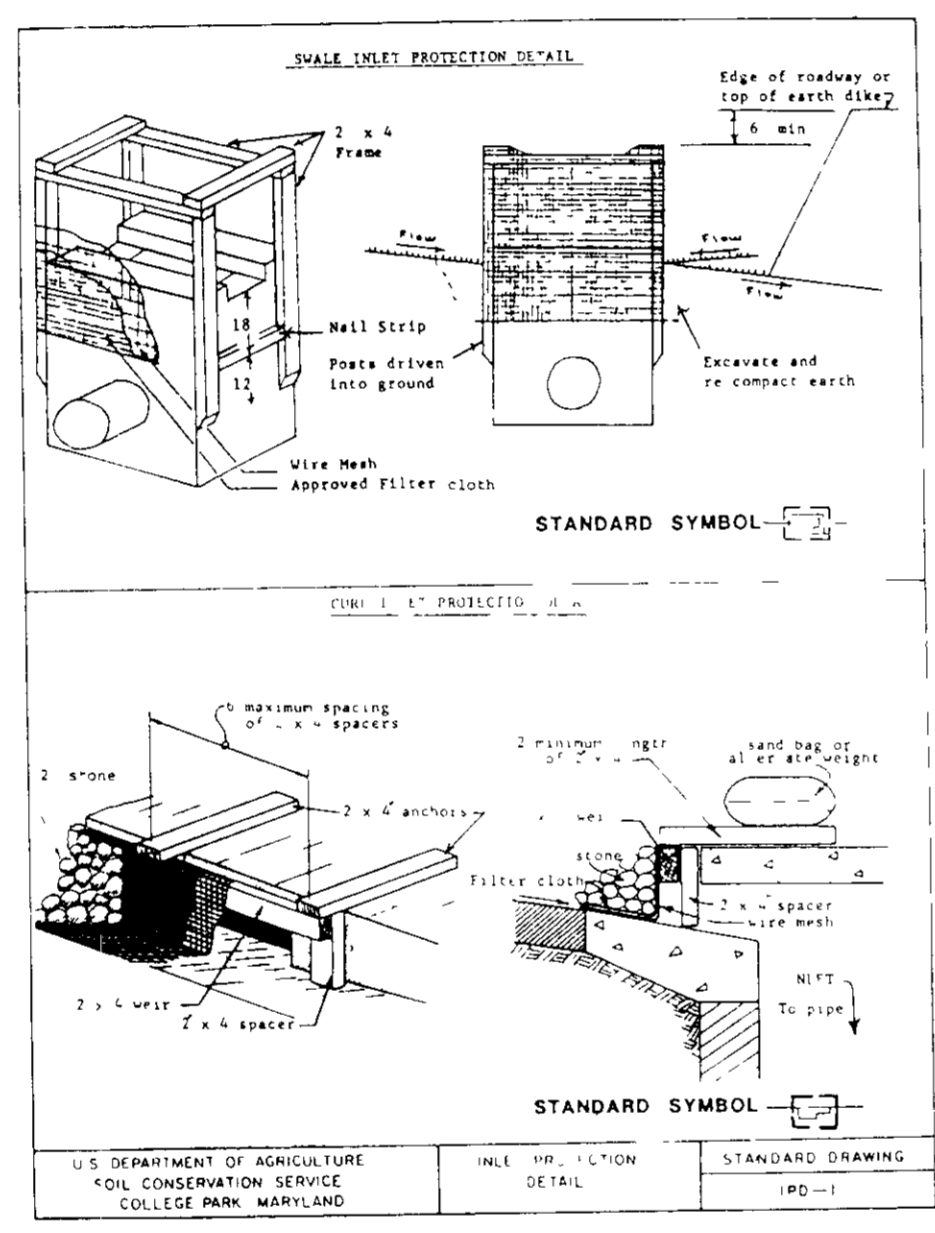


- CONSTRUCTION SPECIFICATIONS FOR ST-VI
1. The area under embankment shall be cleared, grubbed and stripped of any vegetation and root mat. The post area shall be cleared.
2. The fill material for the embankment shall be free of roots by other woody vegetation as well as increased areas of rocks, organic material or other objectionable material.

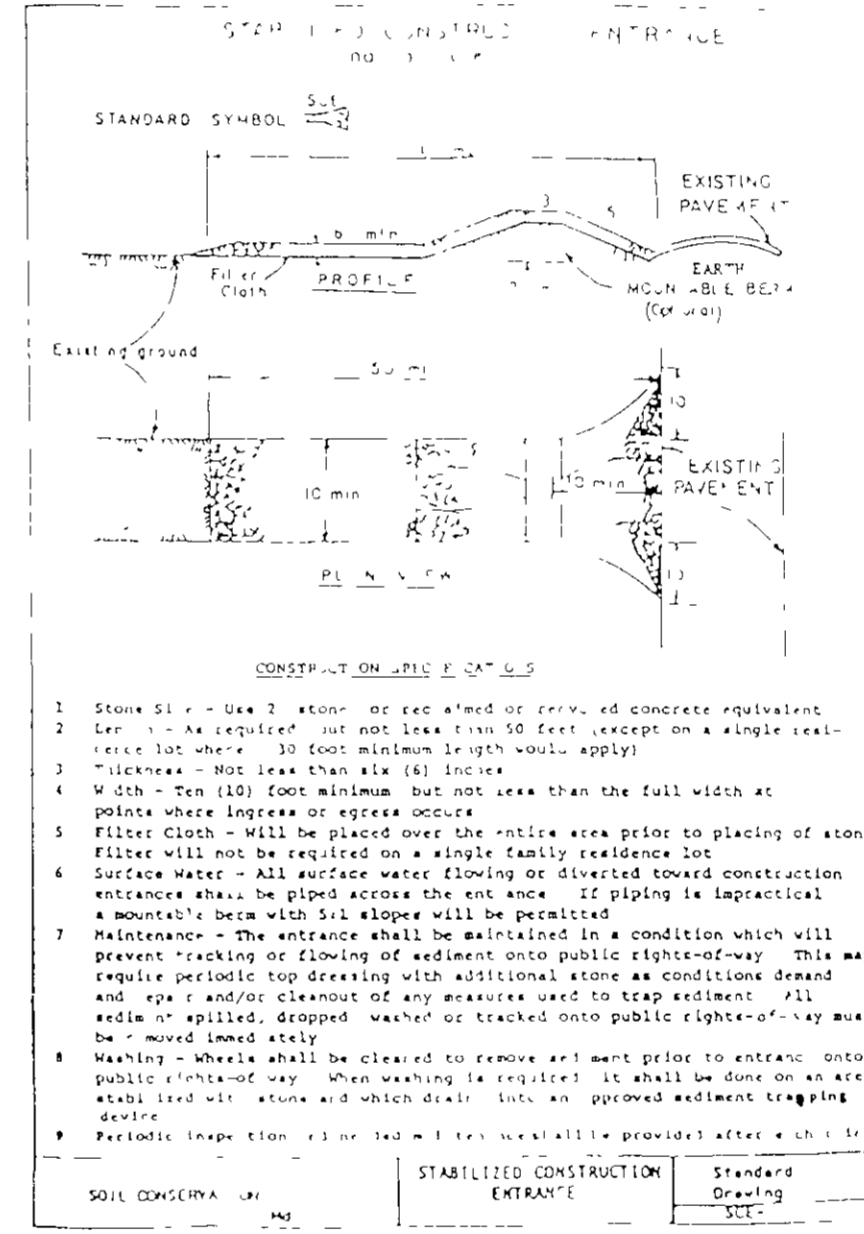


PERMANENT SEEDING NOTES

- Apply to graded or cleared areas not subject to immediate further disturbance where a permanent long-lived vegetative cover is needed.
Seeding Preparation: Loosen upper three inches of soil by raking, disking or other acceptable means before seeding.
Soil Amendments: In lieu of soil test recommendations use one of the following schedules...



- 1. The area under embankment shall be cleared, grubbed and stripped of any vegetation and root mat. The post area shall be cleared.
2. The fill material for the embankment shall be free of roots by other woody vegetation as well as increased areas of rocks, organic material or other objectionable material.



DEVELOPER'S/BUILDER'S CERTIFICATE
I/We certify that all development and construction will be done according to this plan of development and plan for erosion and sediment control...

Signature of Developer/Builder: RPB... Date: 5/11/88
ENGINEER'S CERTIFICATE
I hereby certify that this plan for Erosion and Sediment Control represents a practical and workable plan based on my personal knowledge of the site conditions...

SEQUENCE OF CONSTRUCTION

- 1. Obtain grading permit.
2. Clear and grub for installation of sediment control devices.
3. Install all controls including SCE, DIKES, TRAPS, and SILT FENCES.
4. Begin site grading.
5. Begin construction of water and sewer.
6. Begin building construction.
7. Construct storm drain system and install storm drain inlet protection where indicated on plan view.
8. Construct parking areas, curb and gutter, etc.
9. Permanently stabilize all graded areas as required by the seeding notes on this sheet.
10. Remove sediment control devices with the approval of the Howard County sediment control inspector.

THESE PLANS HAVE BEEN REVIEWED FOR THE HOWARD SOIL CONSERVATION DISTRICT AND MEET TECHNICAL REQUIREMENTS.
Signature: James M. Helms, Date: 5/14/88, U.S. Soil Conservation Service.

THIS PLAN IS APPROVED FOR SOIL EROSION AND SEDIMENT CONTROL BY THE HOWARD SOIL CONSERVATION DISTRICT.
Signature: Stephen... Date: 5/24/88, Howard S.C.D.

APPROVED FOR PUBLIC WATER AND PUBLIC SEWERAGE SYSTEMS HOWARD COUNTY HEALTH DEPARTMENT.
Signature: Jayman... Date: 6-13-88.
APPROVED HOWARD COUNTY OFFICE OF PLANNING & ZONING.
Signature: ... Date: 6-16-88.
APPROVED FOR PUBLIC WATER AND PUBLIC SEWERAGE STORM DRAINAGE SYSTEM AND PUBLIC ROADS HOWARD COUNTY DEPARTMENT OF PUBLIC WORKS.
Signature: ... Date: 6-15-88.
APPROVED HOWARD COUNTY DEPARTMENT OF PUBLIC WORKS.
Signature: ... Date: 6-16-88.
APPROVED HOWARD COUNTY DEPARTMENT OF PUBLIC WORKS.
Signature: ... Date: 6-7-88.

Table with columns for NO., DESCRIPTION, DATE, and APPROVED. Includes a revision table and a professional seal area.

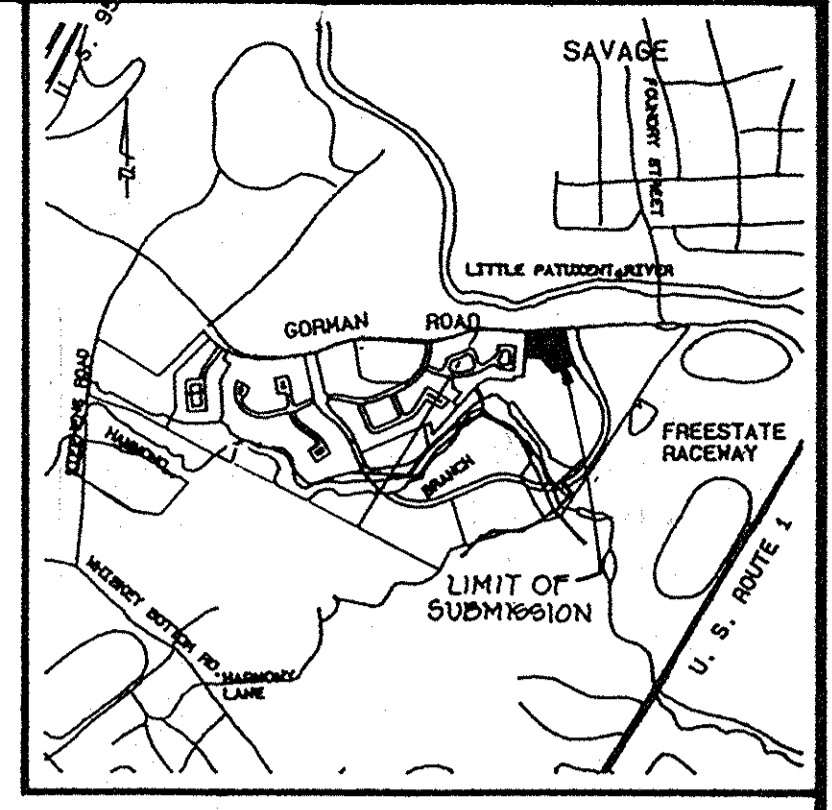
EROSION AND SEDIMENT CONTROL PLAN

Patton Harris Rust and Associates
A Professional Corporation
Engineers, Surveyors, Planners and Landscape Architects
7609 Standish Place Rockville, Maryland 20855 (301)762-2220

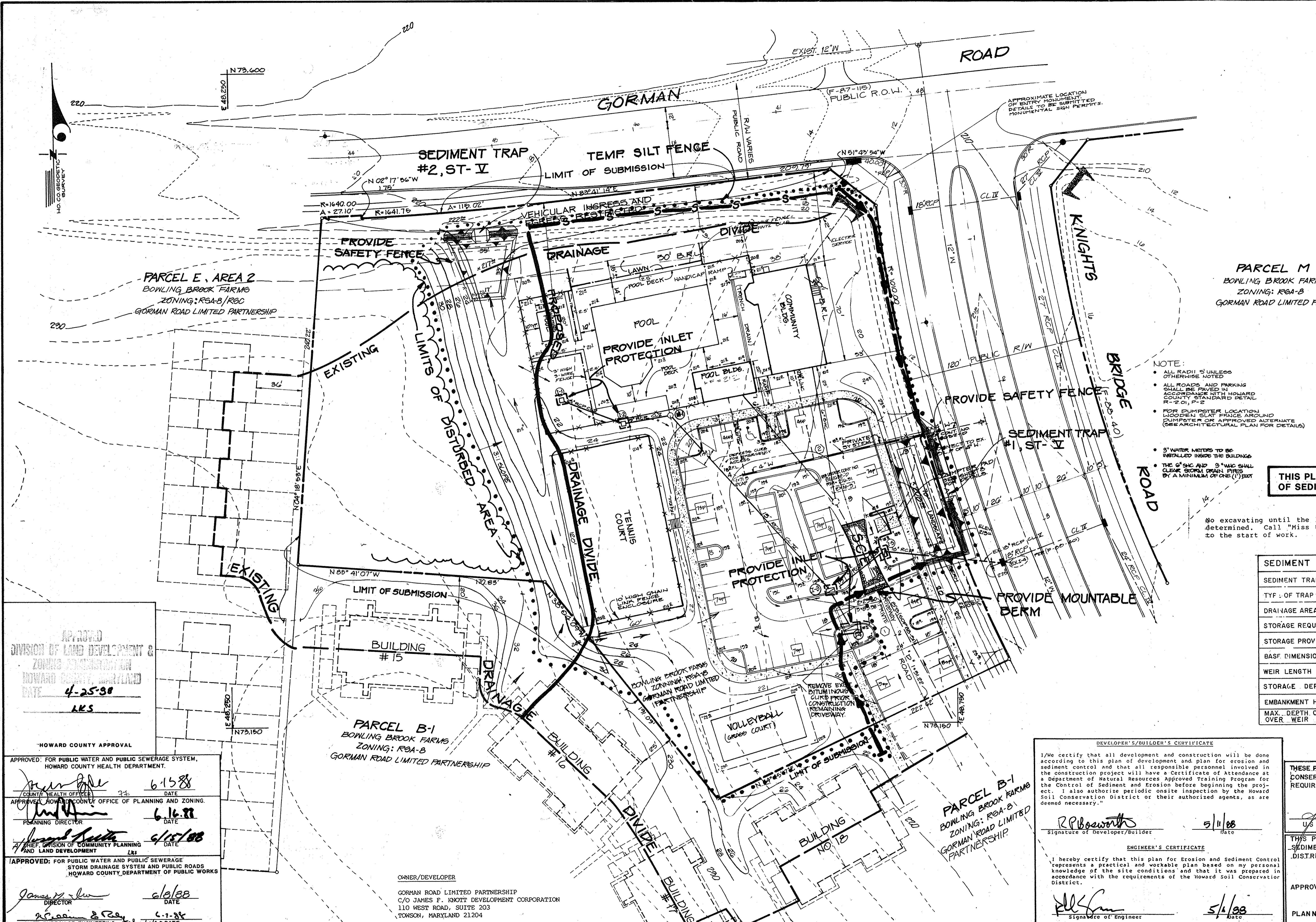
BOWLING BROOK FARMS
SECTION 2 AREA 2
PARCEL B-2
RECREATION CENTER
SIXTH ELECTION DISTRICT
TAX MAP 47 PARCEL 141
L.1394 F.632
O.P.Z. FILE NOS. S-87-78, P-87-10, F-88-40

Table with columns for SURVEY P/R #, DATE, DESIGN, DRAWN, CHECKED, SCALE, and FILE NO.

SDP-88-123



VICINITY MAP
SCALE: 1" = 2000'



- NOTE:
- ALL RADII UNLESS OTHERWISE NOTED
 - ALL ROADS AND PARKING SHALL BE PAVED IN ACCORDANCE WITH HOWARD COUNTY STANDARD DETAIL R-201, P-2
 - FOR PUMPSTER LOCATION: WOODEN SLAT FENCE AROUND PUMPSTER OR APPROVED ALTERNATE (SEE ARCHITECTURAL PLAN FOR DETAILS)
 - 5" WATER METERS TO BE INSTALLED INSIDE THE BUILDINGS
 - THE 6" S&C AND 8" WIC SHALL CLEAR FROM DRAIN PIPES BY A MINIMUM OF ONE (1) FOOT

THIS PLAN IS FOR CONSTRUCTION OF SEDIMENT CONTROL MEASURES ONLY

MISS UTILITY

No excavating until the location of existing utilities has been determined. Call "Miss Utility" at 800-257-7777 48 hours prior to the start of work.

SEDIMENT TRAP #	#1	#2
TYF. OF TRAP - STD & SPEC #	ST-V	ST-V
DRAINAGE AREA (ACRES)	3.6	1.0
STORAGE REQUIRED (FT ³)	6,470	2,000
STORAGE PROVIDED (FT ³)	6,500	2,000
BASF DIMENSIONS & ELEV.	15' x 70' @ 200'	AS SHOWN @ 217'
WEIR LENGTH & ELEV.	15' @ 213'	6' @ 222'
STORAGE DEPTH	5'	3'
EMBANKMENT HT. & TOP ELEV.	2' @ 215'	2' @ 222'
MAX. DEPTH OF FLOW OVER WEIR	1.0'	1.0'

APPROVED
DIVISION OF LAND DEVELOPMENT & ZONING REGULATION
HOWARD COUNTY DEPARTMENT OF LAND DEVELOPMENT
DATE: 4-25-88
LKS

HOWARD COUNTY APPROVAL
APPROVED: FOR PUBLIC WATER AND PUBLIC SEWERAGE SYSTEM, HOWARD COUNTY HEALTH DEPARTMENT.
DATE: 6/15/88
COUNTY HEALTH OFFICER
APPROVED: HOWARD COUNTY OFFICE OF PLANNING AND ZONING.
DATE: 6/16/88
PLANNING DIRECTOR
APPROVED: FOR PUBLIC WATER AND PUBLIC SEWERAGE STORM DRAINAGE SYSTEM AND PUBLIC ROADS HOWARD COUNTY DEPARTMENT OF PUBLIC WORKS
DATE: 6/15/88
CHIEF, DIVISION OF COMMUNITY PLANNING AND LAND DEVELOPMENT
DATE: 6/16/88
DIRECTOR
DATE: 6-1-88
CHIEF, BUREAU OF ENGINEERING

OWNER/DEVELOPER
GORMAN ROAD LIMITED PARTNERSHIP
C/O JAMES F. KNOTT DEVELOPMENT CORPORATION
110 WEST ROAD, SUITE 203
TOWSON, MARYLAND 21204

DEVELOPER'S/BUILDER'S CERTIFICATE
I/We certify that all development and construction will be done according to this plan of development and plan for erosion and sediment control and that all responsible personnel involved in the construction project will have a Certificate of Attendance at a Department of Natural Resources Approved Training Program for the Control of Sediment and Erosion before beginning the project. I also authorize periodic onsite inspection by the Howard Soil Conservation District or their authorized agents, as are deemed necessary.
Signature of Developer/Builder: R.P. Bosworth
Date: 5/1/88
ENGINEER'S CERTIFICATE
I hereby certify that this plan for Erosion and Sediment Control represents a practical and workable plan based on my personal knowledge of the site conditions and that it was prepared in accordance with the requirements of the Howard Soil Conservation District.
Signature of Engineer: [Signature]
Date: 5/1/88

THESE PLANS HAVE BEEN REVIEWED FOR THE HOWARD SOIL CONSERVATION DISTRICT AND MEET TECHNICAL REQUIREMENTS.
Signature: [Signature]
Date: 5/1/88
U.S. Soil Conservation Service
THIS PLAN IS APPROVED FOR SOIL EROSION AND SEDIMENT CONTROL BY THE HOWARD SOIL CONSERVATION DISTRICT.
Signature: [Signature]
Date: 5/1/88
HOWARD S.C.D.
PLAN NUMBER

NO.	DESCRIPTION	DATE	APPROVED	DATE
2	ADD PRELIMINARY STOPS & CONC. STOPS	5-24-88		
1	ISSUED TO HQ.C.D.	5-10-88		

REVISION APPROVED BY



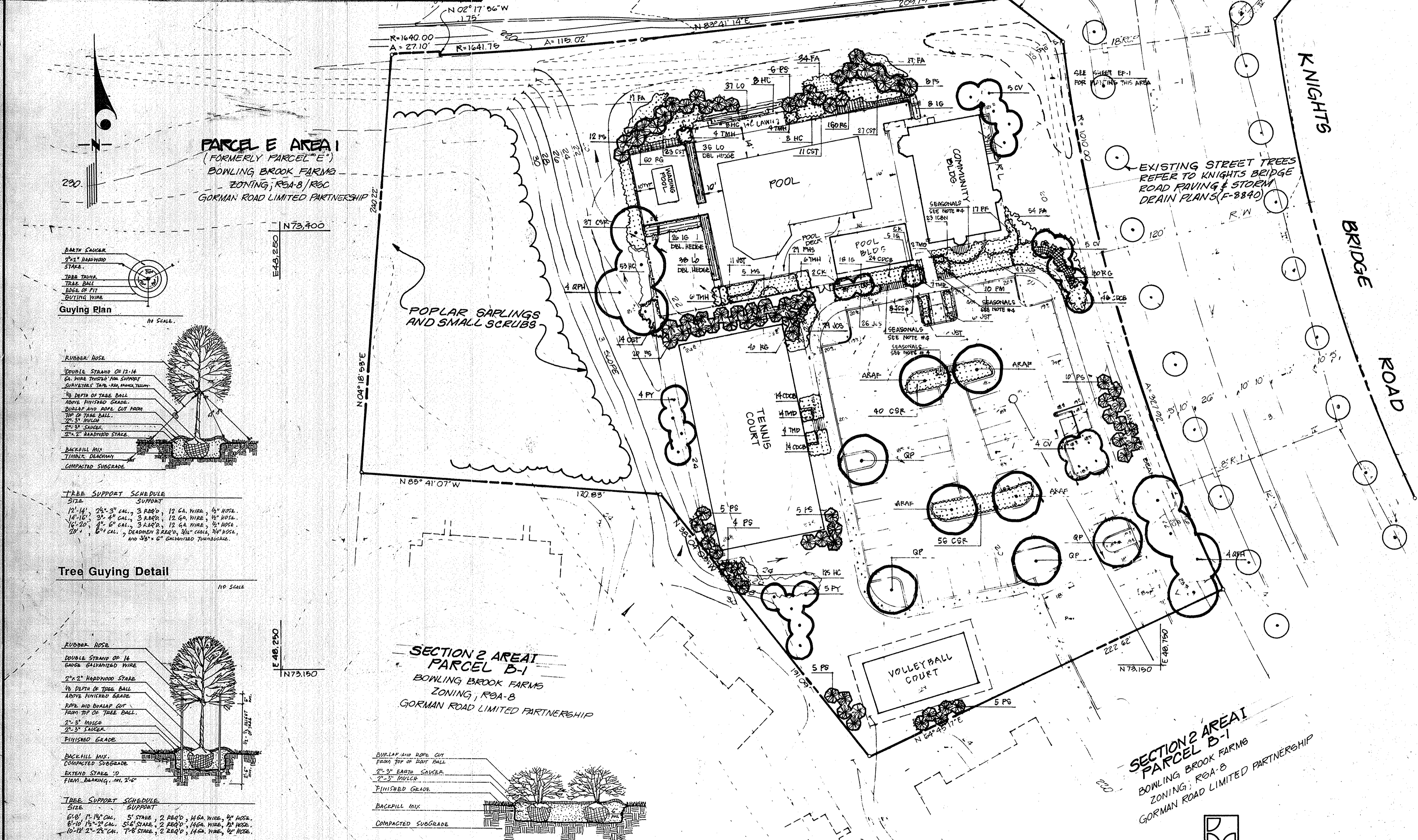
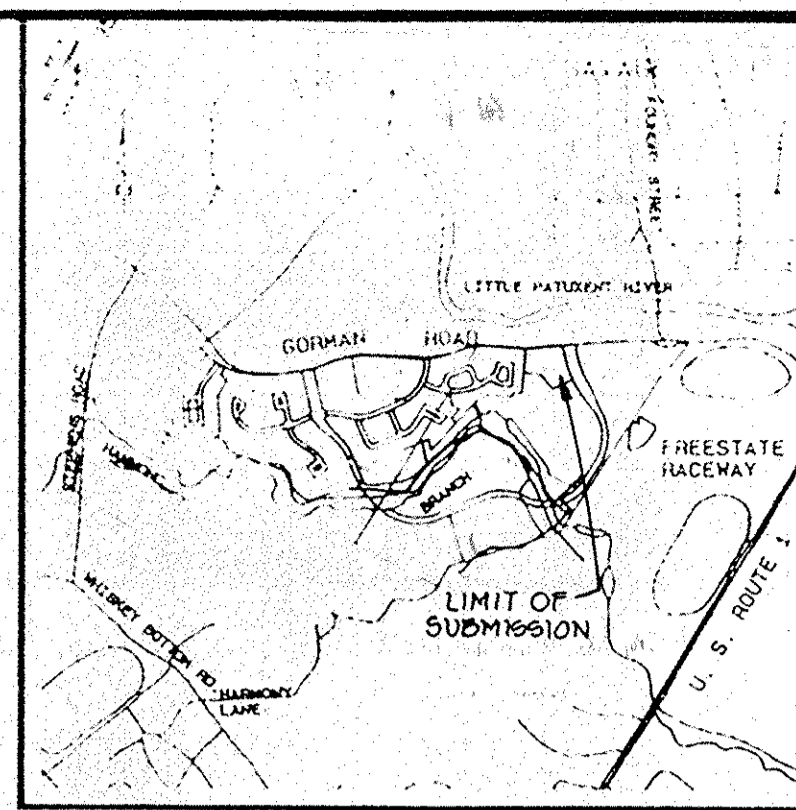
EROSION AND SEDIMENT CONTROL PLAN

Patton Harris Rust and Associates
A Professional Corporation
Engineers, Surveyors, Planners and Landscape Architects
7609 Standish Place Rockville, Maryland 20855 (301)762-2220

BOWLING BROOK FARMS
SECTION 2 AREA 2
PARCEL B-2
RECREATION CENTER
SIXTH ELECTION DISTRICT
TAX MAP 47 PARCEL 141
L.1394 F.632
O.P.Z. FILE NOS.: S-87-78, P-87-10, F-88-40

SURVEY	DATE
DESIGN R.S.H.	12-23-87
DRAWN J.R.N./C.B.R.	SHEET
CHECKED	5 OF 8
SCALE 1" = 30'	FILE NO.
C.I. 2'	2184-1-5

APPROVED FOR PUBLIC WATER AND PUBLIC SEWERAGE SYSTEMS
 HOWARD COUNTY HEALTH DEPARTMENT
 COUNTY HEALTH OFFICER DATE
 APPROVED FOR HOWARD COUNTY OFFICE OF PLANNING & ZONING
 DIRECTOR DATE
 CHIEF DIVISION OF COMMUNITY PLANNING AND LAND DEVELOPMENT DATE
 APPROVED FOR PUBLIC WATER AND PUBLIC SEWERAGE STORM DRAINAGE SYSTEM AND PUBLIC ROADS
 HOWARD COUNTY DEPARTMENT OF PUBLIC WORKS
 DIRECTOR DATE
 CHIEF BUREAU OF ENGINEERING DATE



PARCEL "M"
 (FORMERLY PARCEL "A")
 BOWLING BROOK FARMS
 ZONING: R9A-B
 GORMAN ROAD LIMITED PARTNERSHIP

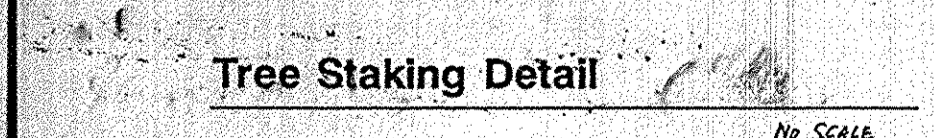
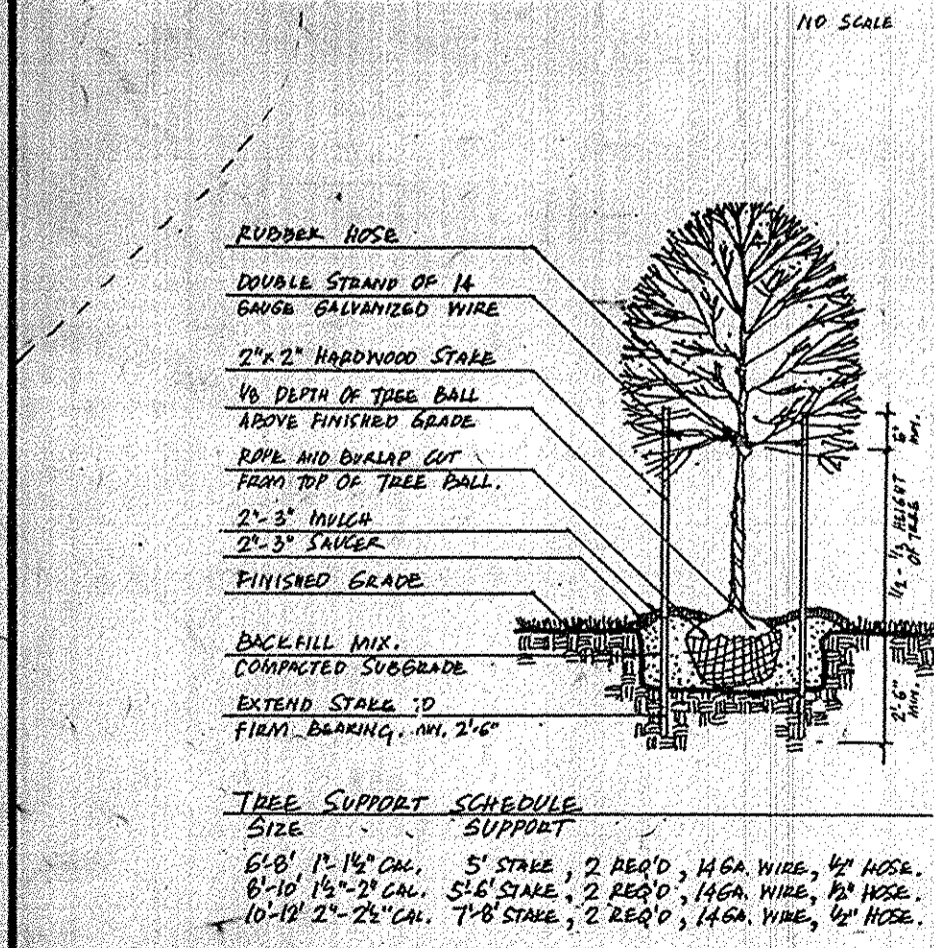
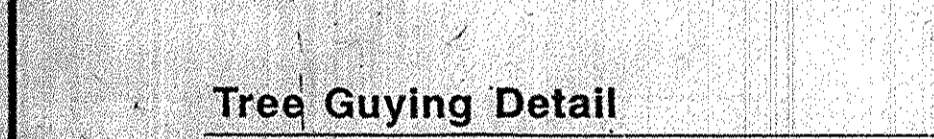
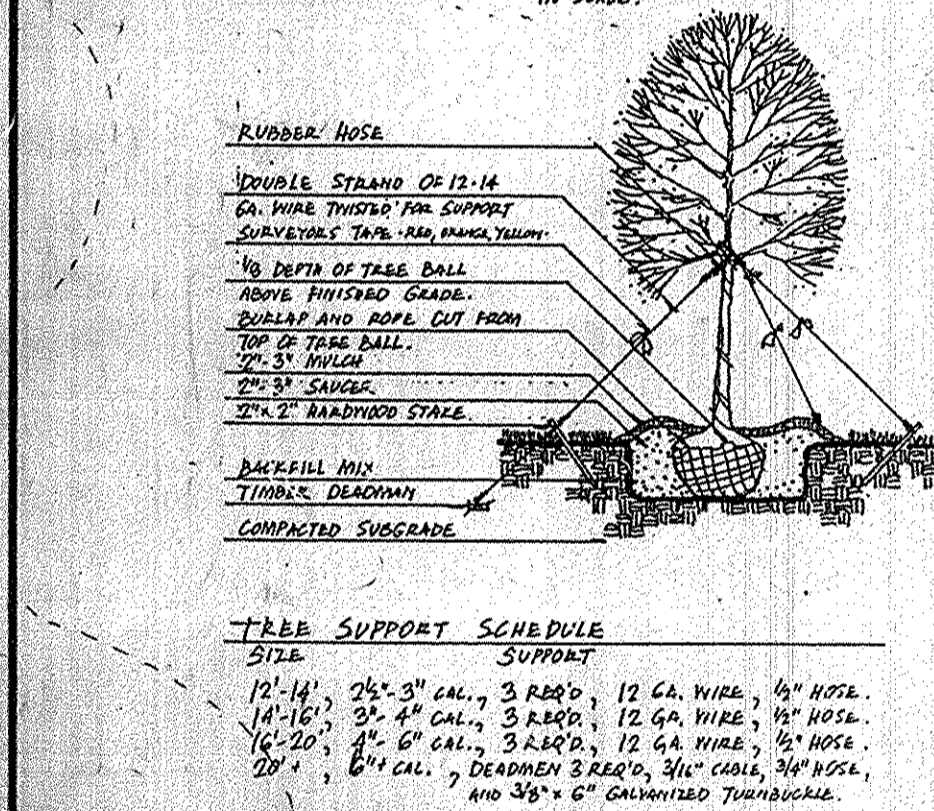
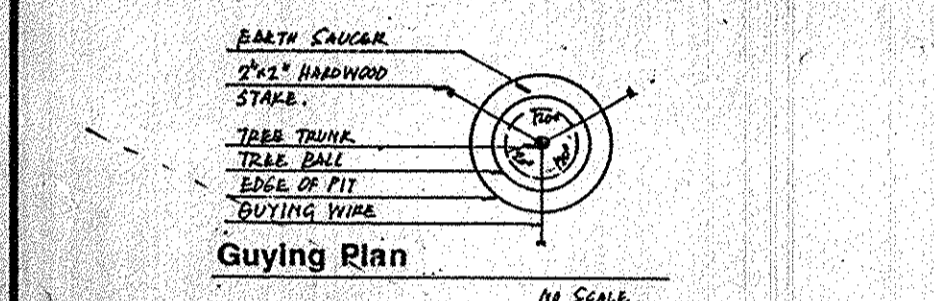
THIS PLAN IS FOR LANDSCAPING PURPOSE ONLY

PLANT LIST

KEY	QTY	BOTANICAL / COMMON NAME	SIZE / COND.	REMARKS
AEF	4	AZER BURNING / AUTUMN PLUME / AUTUMN PLUME MAPLE	8' - 9' H. CAL. B-B	LEAFY UNDEVELOPED SPECIMEN
CF	3	CORNUS KUSHA / CHINESE DOGWOOD	6' - 8' H. B-B	LEAFY UNDEVELOPED SPECIMEN
CF	75	CORNUS STOLONIFERA / REDDOGWOOD	15' - 20' H. B-B	3:1:0 P.L.
COB	98	COTONEASTER CAMMURI / CORAL BEAUTY / CORAL BEAUTY COTONEASTER	21' - 30' H. CONT.	3:1:0 P.L.
CSR	198	COTONEASTER CALICARPA / 'REPENDENS' / VIGORAN LEAF COTONEASTER	21' - 30' H. CONT.	3:1:0 P.L.
CV	14	CRATAEGUS VIGORIS / HUNTER KING / HUNTER KING HAWTHORN	11' - 15' H. CAL. B-B	3:1:0 P.L.
FA	12A	FRAXINUS AMMOCOCCUS / AMMOCOCCUS / AMMOCOCCUS	12' - 15' H. CONT.	3:1:0 P.L.
HC	202	HEMIFRAXINUS SYRIACA / SYRIACA	12' - 15' H. CONT.	3:1:0 P.L.
HM	28	HEMIFRAXINUS SYRIACA / SYRIACA	12' - 15' H. CONT.	3:1:0 P.L.
IS	57	ILEX GLABRA / COMPACTA / DWARF HEDGE	15' - 24' H. B-B	3:1:0 P.L.
JS	97	JUNIPERUS COMMENSIS / 'SABOTINI' / SABOTINI JUNIPER	15' - 24' H. CONT.	3:1:0 P.L.
JC	97	JUNIPERUS COMMENSIS / 'SABOTINI' / SABOTINI JUNIPER	15' - 24' H. CONT.	3:1:0 P.L.
UN	28	JUNIPERUS COMMENSIS / 'SABOTINI' / SABOTINI JUNIPER	15' - 24' H. CONT.	3:1:0 P.L.
LD	111	LIGULASTRUM SYRIACA / SYRIACA	12' - 15' H. CONT.	3:1:0 P.L.
MS	6	MICANTHUS SYRIACA / SYRIACA	12' - 15' H. CONT.	3:1:0 P.L.
OP	4	ORBERIS PALUSTRIS / PA. ONE	5' - 8' H. CAL. B-B	LEAFY UNDEVELOPED SPECIMEN
PM	5	ORBERIS PALUSTRIS / PA. ONE	5' - 8' H. CAL. B-B	LEAFY UNDEVELOPED SPECIMEN
MS	21	PENICILLATA ALPESTRIS / MOUNTAIN GRASS	SHRUB CONT.	3:1:0 P.L.
PF	17	PRUNUS PUMILA / RED PRUNELLA	21' - 30' H. B-B	3:1:0 P.L.
PH	10	PRUNUS MUGO / COMPACTA / DWARF HEDGE	15' - 24' H. CONT.	3:1:0 P.L.
PI	80	PRUNUS STROBUS / WHITE PINE	15' - 24' H. B-B	3:1:0 P.L.
PT	1	PRUNUS YEDOENSIS / YOSHINO CHERRY	7' - 12' H. CAL. B-B	3:1:0 P.L.
RE	1	PRUNUS YEDOENSIS / YOSHINO CHERRY	7' - 12' H. CAL. B-B	3:1:0 P.L.
MS	440	RIBESCIA COLLESTRIUM / BLACK EYED SUSAN	QUART. CONT.	3:1:0 P.L.
TH	20	TAXUS MEDIA / WICKS' / WICKS' YEW	24' - 30' H. B-B	3:1:0 P.L.
TMD	17	TAXUS MEDIA / WICKS' / WICKS' YEW	24' - 30' H. B-B	3:1:0 P.L.

NOTES:

- ALL PLANT MATERIAL SHALL BE FULLY HEAVY AND SHALL CONFORM TO A.A.H. SPECIFICATIONS AND BE INSTALLED IN CONFORMANCE WITH L.C.A.M. SPECIFICATIONS.
- PLANT QUANTITIES ARE PROVIDED FOR CONTRACTORS CONVENIENCE ONLY - IF DISCREPANCIES EXIST BETWEEN PLAN AND PLANT LIST, QUANTITIES SHOWN ON PLAN SHALL TAKE PRECEDENCE.
- ALL AREAS DISTURBED BY CONSTRUCTION ACTIVITIES NOT OTHERWISE PLANTED OR MULCHED ARE TO BE SEEDED WITH THE FOLLOWING: BARDY MIX 1:1:1 TURF TYPICALLY TO BE MAINTAINED FOR 90 DAYS OF THREE OF THE FOLLOWING: ADVENTURE, PRELIMINARY, HUNTERS, CHITTY, OR REDDLE; 50% LIGHTWEIGHT BLUEGRASS (ADELPHI) GRASS OR KENTUCKY BLUEGRASS AT A RATE OF 6-7 LBS / 1000 SQ. FT.
- AREAS DESIGNATED AS SCARCITIES TO BE PLANTED AS FOLLOWS:
 SUMMER - ORNAMENTAL HYDRANGEA 1:1 FOR DESIGNING 4 1/2" H. @ 15' P.L.
 FALL - HARDY HEDGES
 WINTER - HEDGES
 SPRING - BURNING BUSH
- VARIOUS SHALL BE COMPOSED OF EQUAL NOS. OF EACH OF THE FOLLOWING VARIETIES:
 RED - FORWARD, BARDY, CHITTY, HUNTERS, CHITTY, OR REDDLE
 THE VARIETIES SHALL BE RANDOMLY PLANTED WITHIN GROUPS.

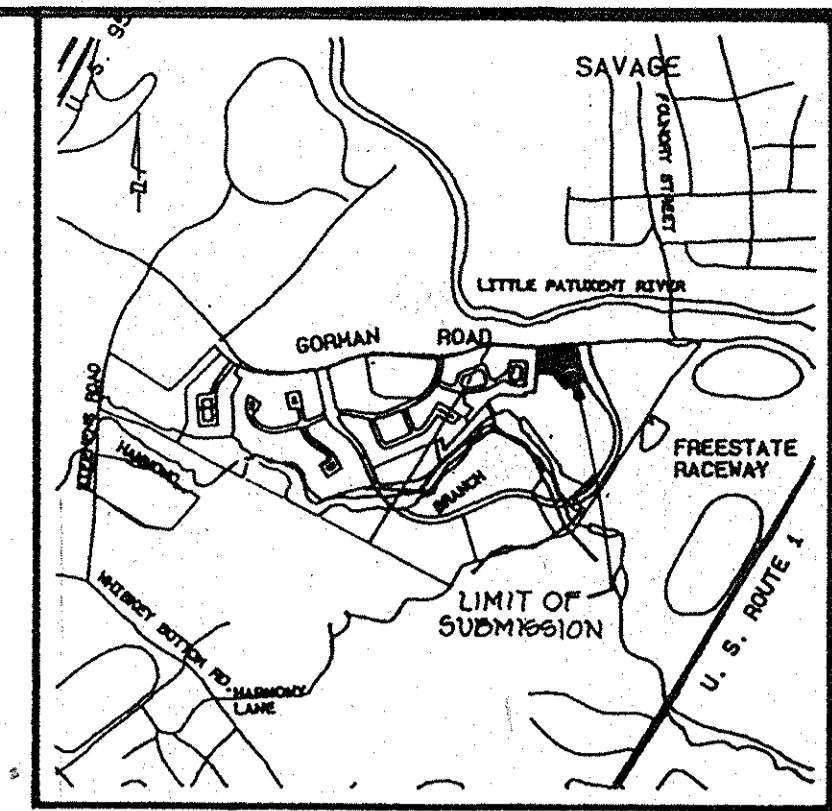


NO.	DESCRIPTION	DATE	APPROVED	DATE
1	ADD AREAS TO STAKE, CONC. STAKE	5-24-88		
2	REVISED TO HO. CO.	6-10-88		

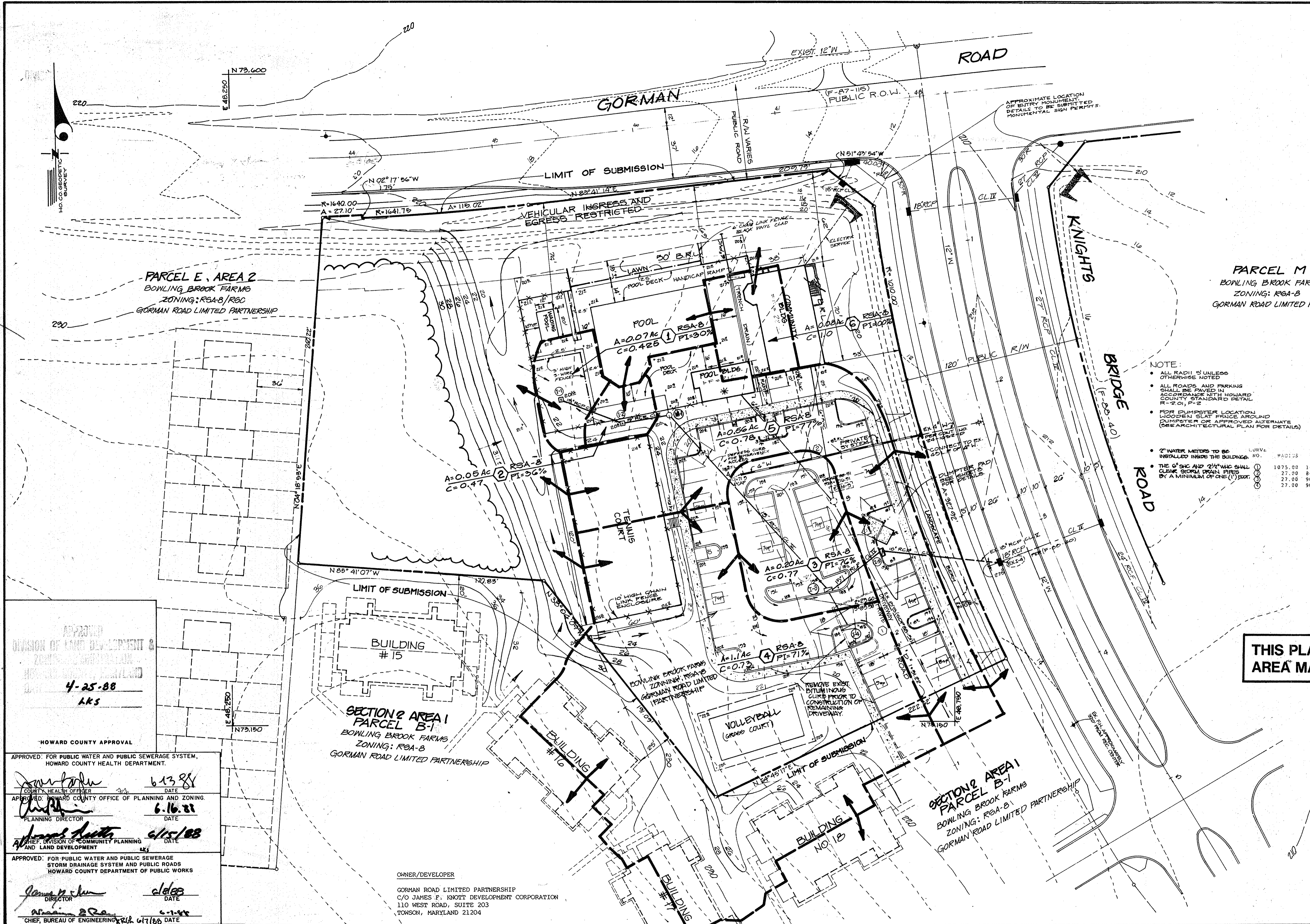
LANDSCAPE PLAN
RECREATION CENTER

Patton Harris Rust and Associates
 A Professional Corporation
 Engineers, Surveyors, Planners and Landscape Architects
 7609 Standish Place Rockville, Maryland 20855 (301) 762-2220

BOWLING BROOK FARMS		SURVEY	
SECTION 2 AREA 2		12-22-87	
PARCEL B-2		12-21-87	
RECREATION CENTER		9-9-87	
SIXTH ELECTION DISTRICT		SHEET	
TAX MAP 47		6 OF 8	
PARCEL 141		CHECKED	
L-1394		FILE NO.	
F-632		2184-1-5	
O.P.Z. FILE NOS.: S-87-78, P-87-10, F-88-40			



VICINITY MAP
SCALE: 1" = 2000'



NOTE:
 • ALL RADII UNLESS OTHERWISE NOTED
 • ALL ROADS AND PARKING SHALL BE PAVED IN ACCORDANCE WITH HOWARD COUNTY STANDARD DETAIL R-201, P-2
 • FOR DUMPSTER LOCATION WOODEN SLAT FRIDGE AROUND DUMPSTER OR APPROVED ALTERNATE (SEE ARCHITECTURAL PLAN FOR DETAILS)

CURVE NO.	CHORD BEARING	CHORD	TAN	ARC	RADIUS	LENGTH
1	N23 49'13"W	271.20	136.69	271.92	14 29'35"	1075.00
2	N58 54'49"W	36.37	24.60	39.98	84 48'48"	27.00
3	S33 44'47"W	38.18	27.00	42.43	90 00'00"	27.00
4	N56 15'13"E	38.18	27.00	42.41	90 00'00"	27.00

THIS PLAN FOR DRAINAGE AREA MAP ONLY

APPROVED
 DIVISION OF LAND DEVELOPMENT & ZONING
 HOWARD COUNTY
 4-25-88
 LKS

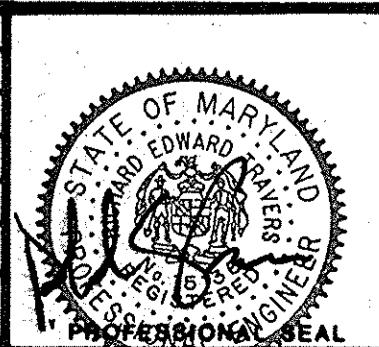
HOWARD COUNTY APPROVAL
 APPROVED: FOR PUBLIC WATER AND PUBLIC SEWERAGE SYSTEM,
 HOWARD COUNTY HEALTH DEPARTMENT.
 [Signature] 6/13/88 DATE
 APPROVED: HOWARD COUNTY OFFICE OF PLANNING AND ZONING.
 [Signature] 6/16/88 DATE
 APPROVED: DIVISION OF COMMUNITY PLANNING AND LAND DEVELOPMENT
 [Signature] 6/15/88 DATE

APPROVED: FOR PUBLIC WATER AND PUBLIC SEWERAGE STORM DRAINAGE SYSTEM AND PUBLIC ROADS
 HOWARD COUNTY DEPARTMENT OF PUBLIC WORKS
 [Signature] 6/16/88 DATE
 [Signature] 6/15/88 DATE
 CHIEF, BUREAU OF ENGINEERING 6/17/88 DATE

OWNER/DEVELOPER
 GORMAN ROAD LIMITED PARTNERSHIP
 C/O JAMES P. KNOTT DEVELOPMENT CORPORATION
 110 WEST ROAD, SUITE 203
 TOWSON, MARYLAND 21284

NO.	DESCRIPTION	DATE	APPROVED	DATE
2	PROPOSED MAPS & CONC. ST. DEP. PLAN	5/24/88	[Signature]	5/24/88
1	ISSUED TO HO. CO.	5/10/88	[Signature]	5/10/88

REVISION APPROVED BY



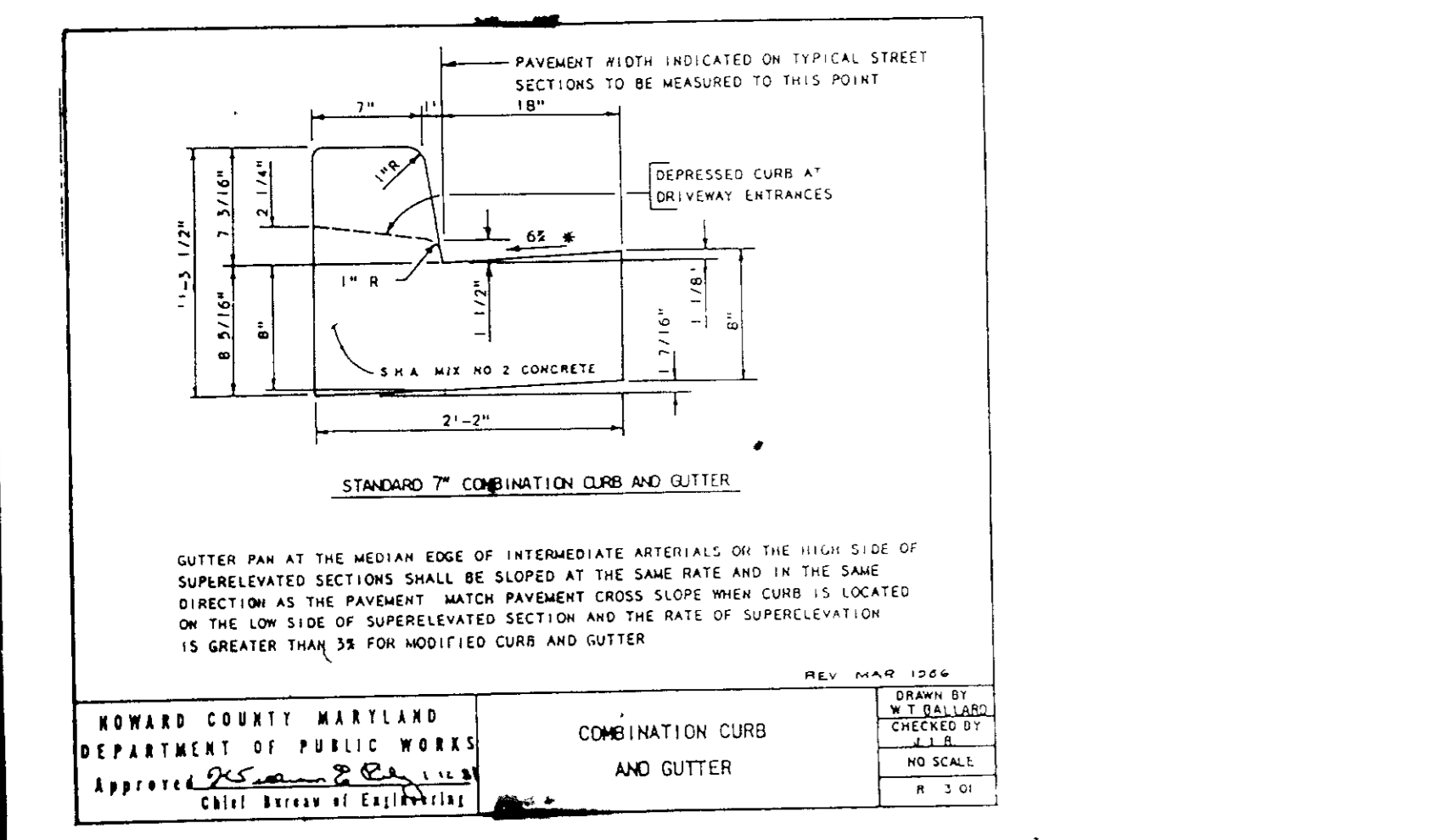
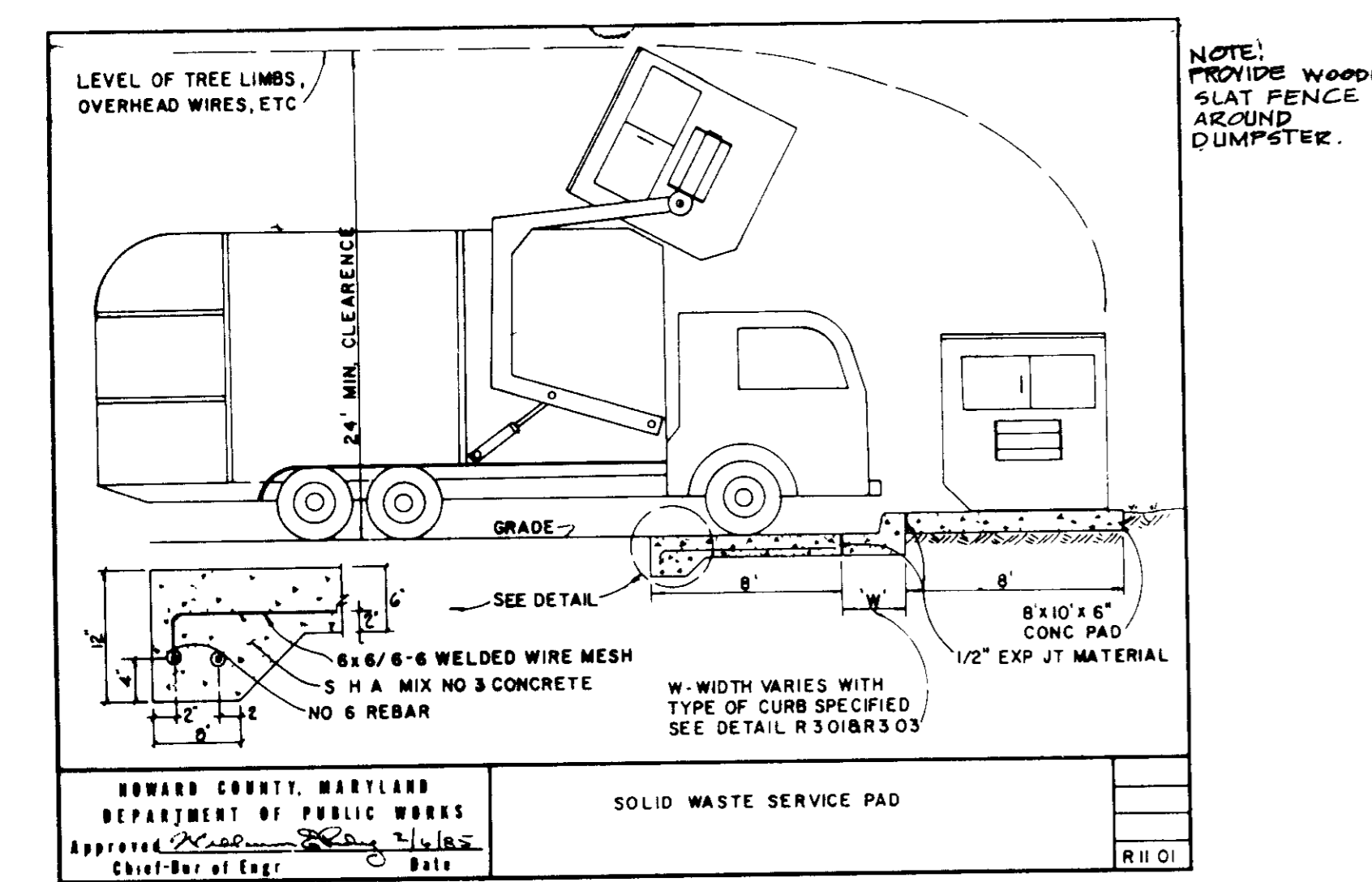
DRAINAGE AREA MAP

Patton Harris Rust and Associates
 A Professional Corporation
 Engineers, Surveyors, Planners and Landscape Architects
 7609 Standish Place Rockville, Maryland 20855 (301)762-2220

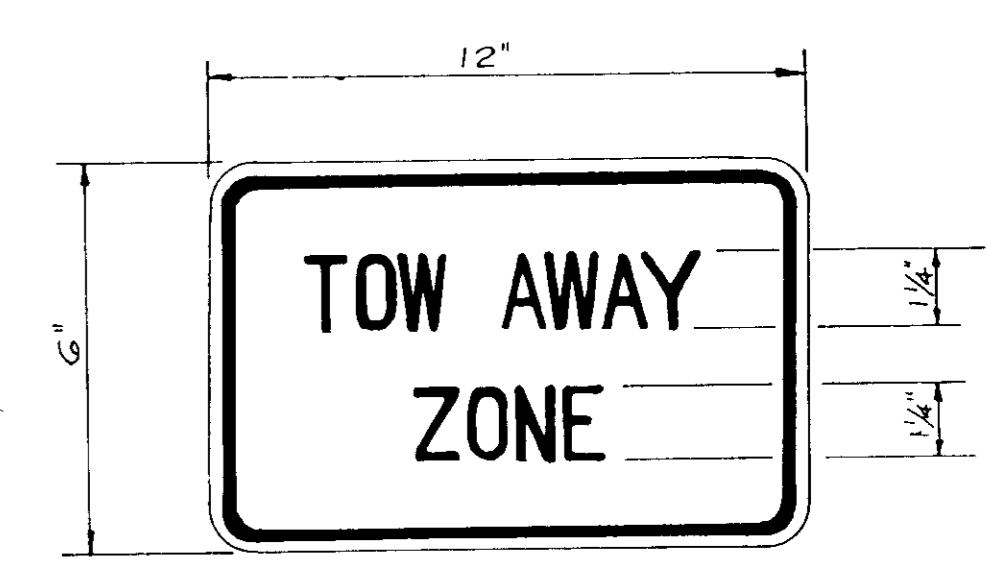
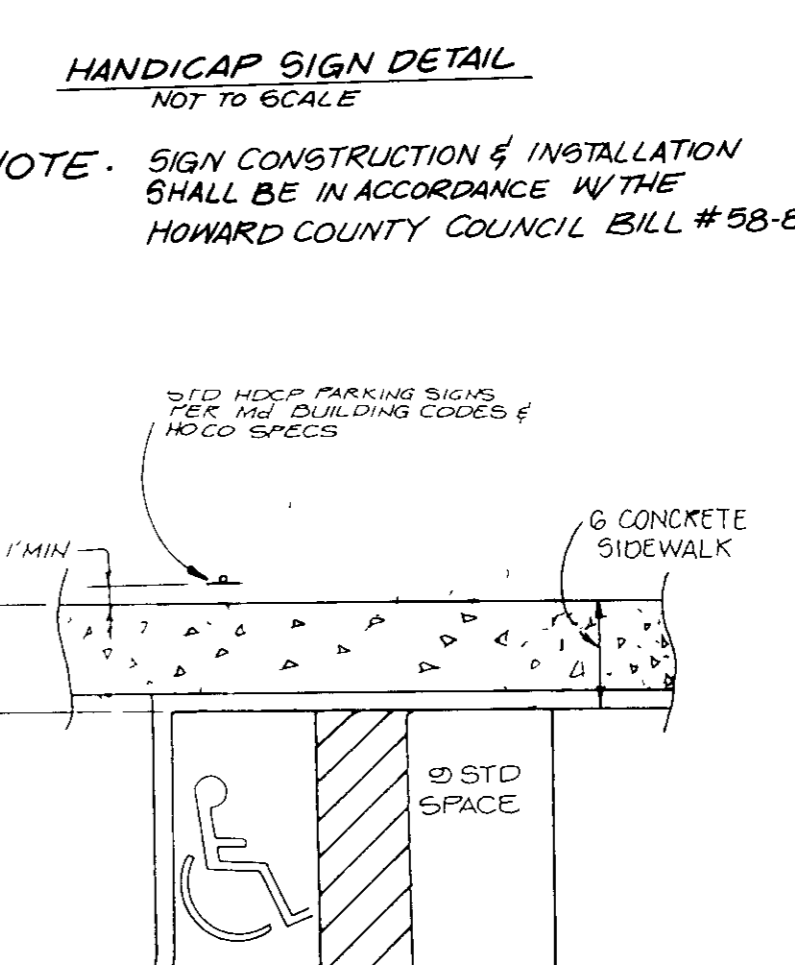
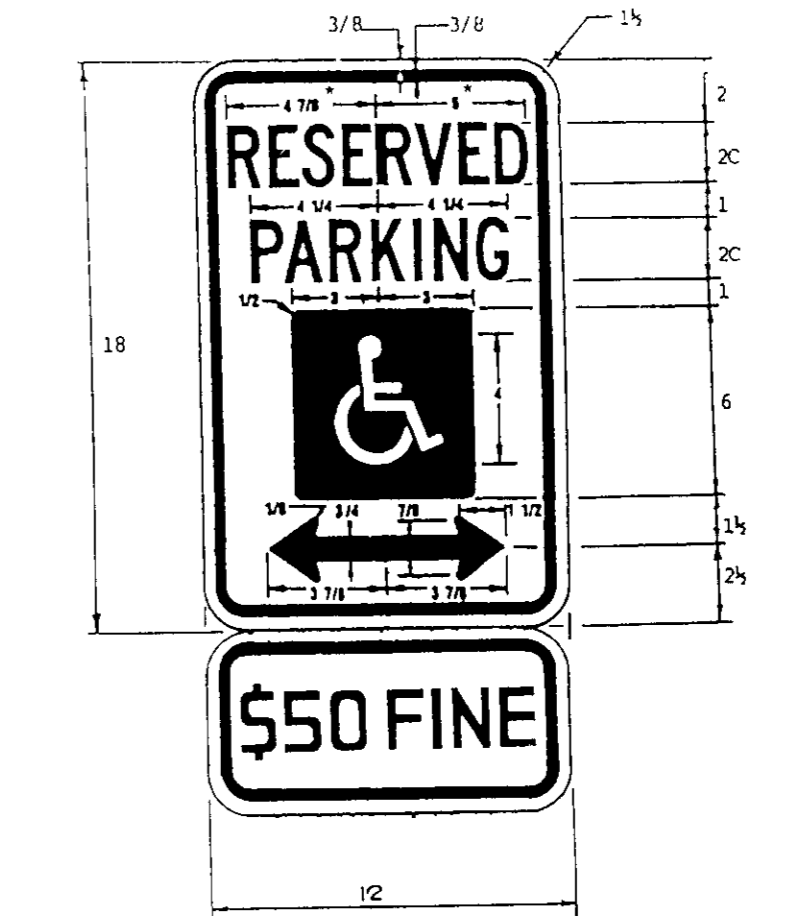
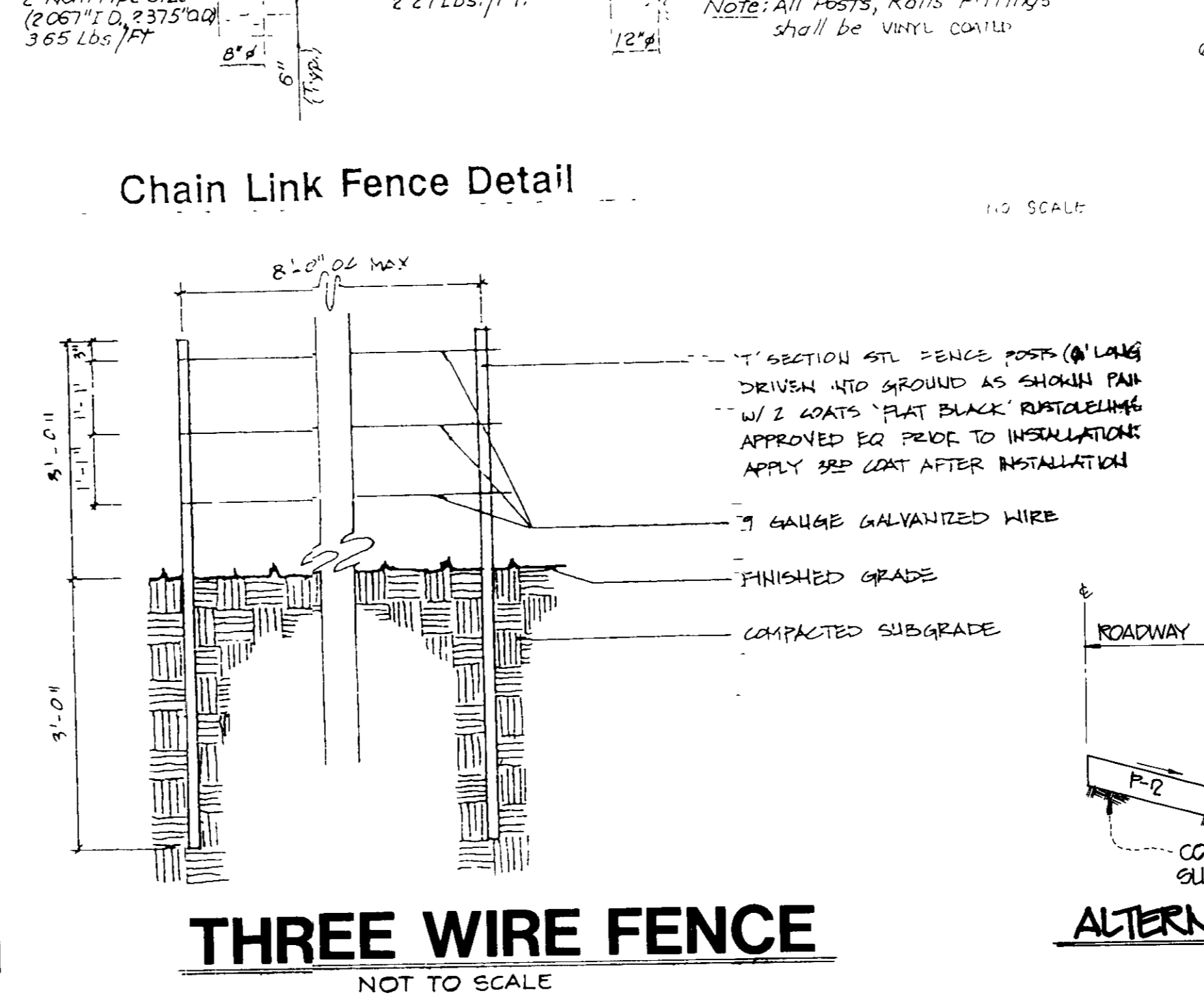
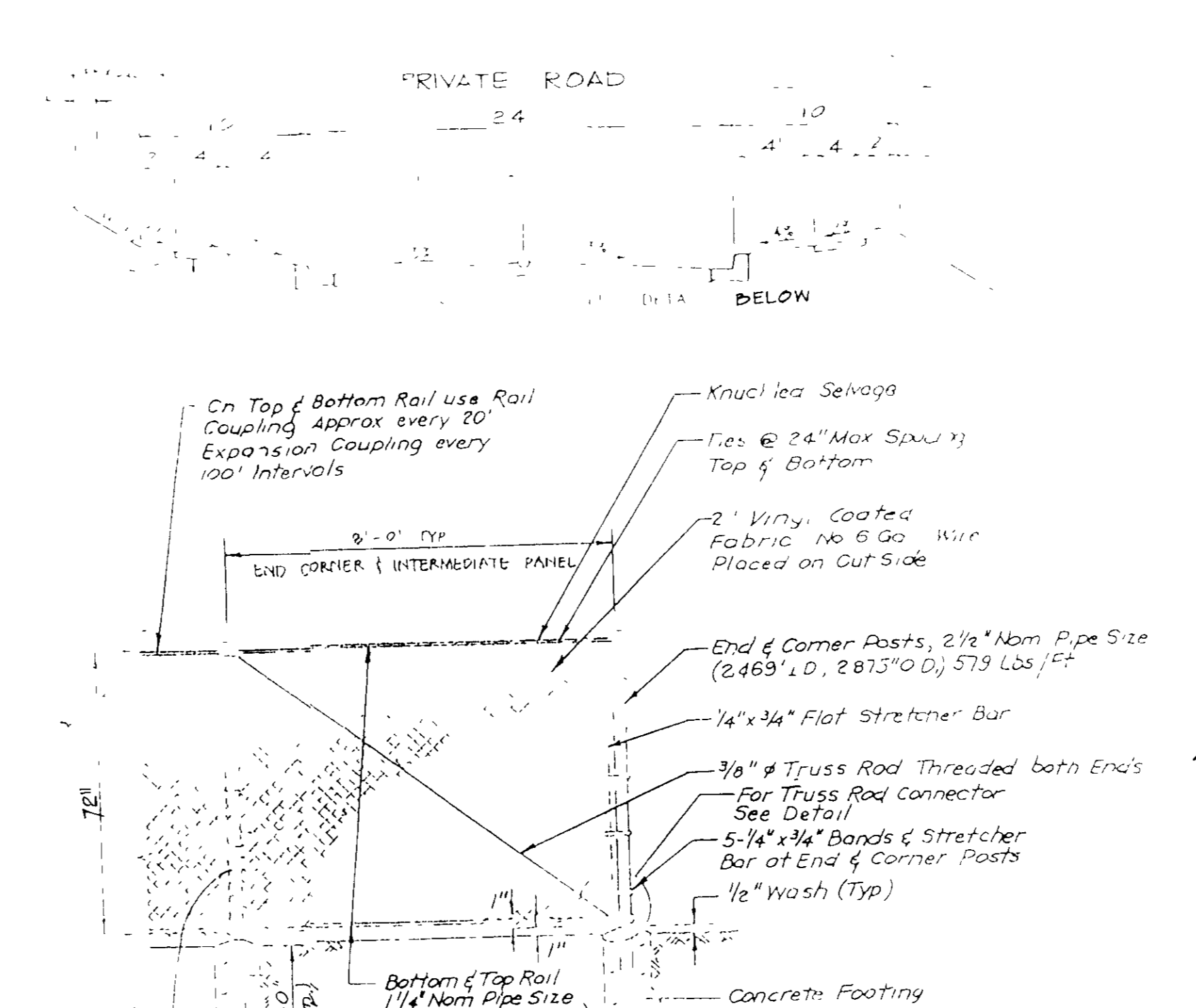
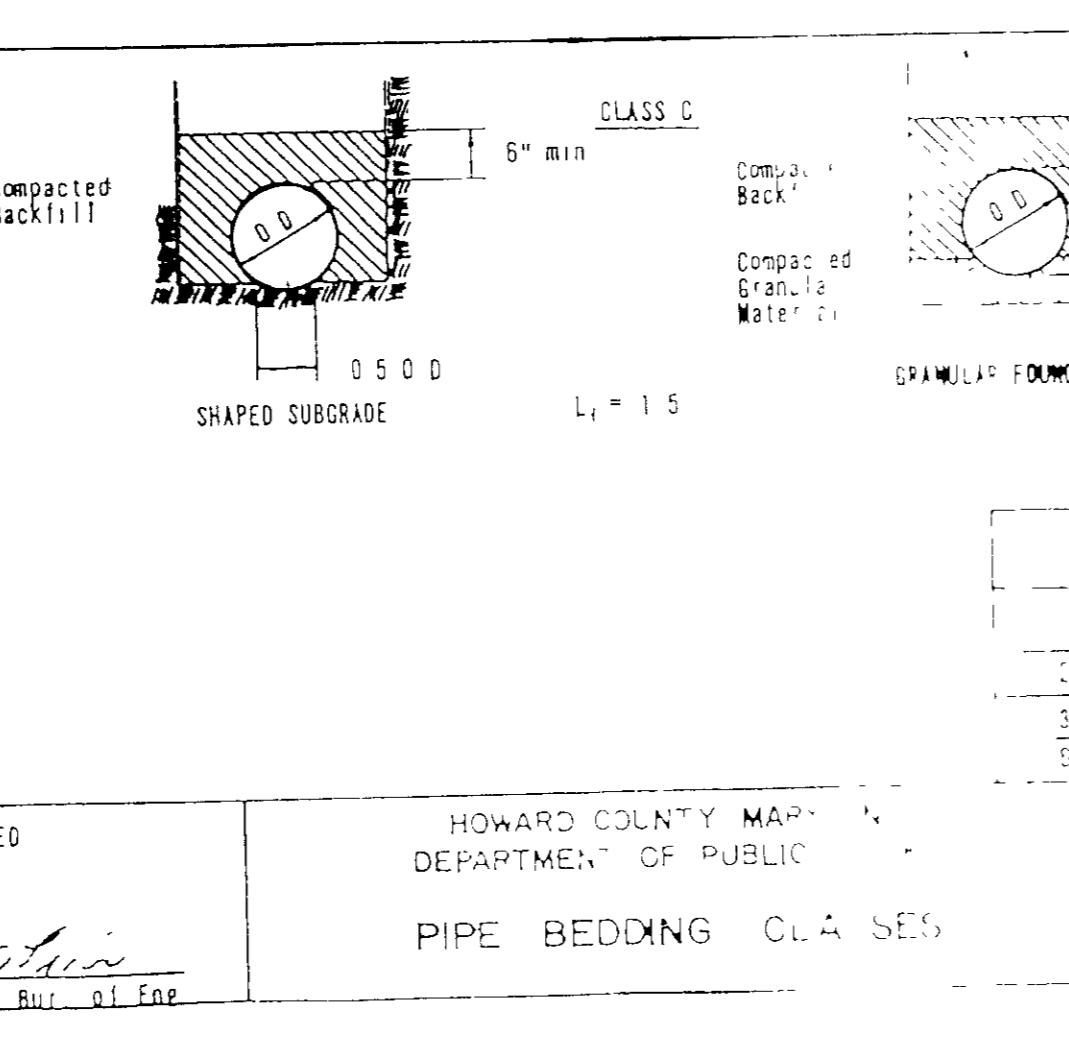
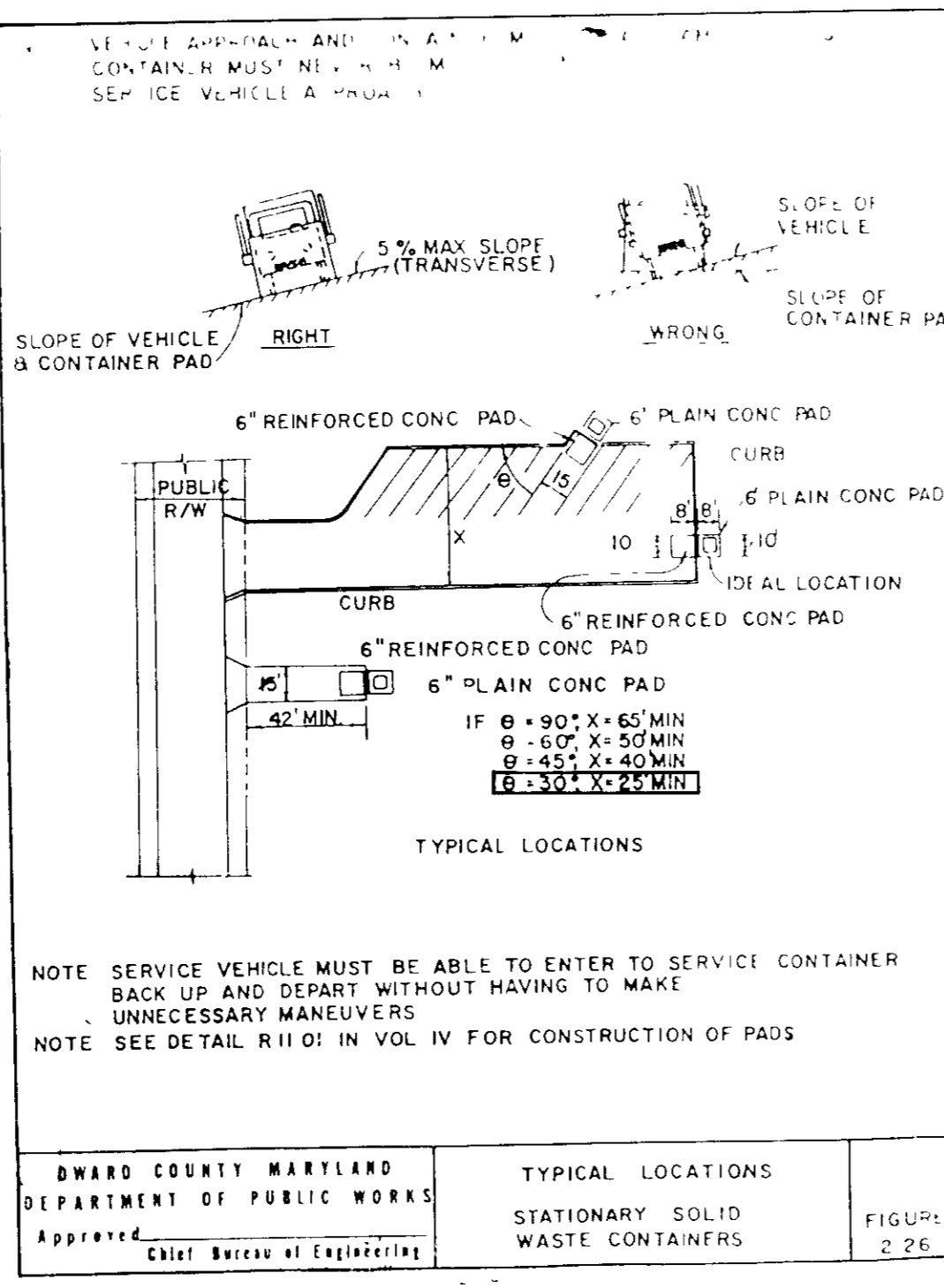
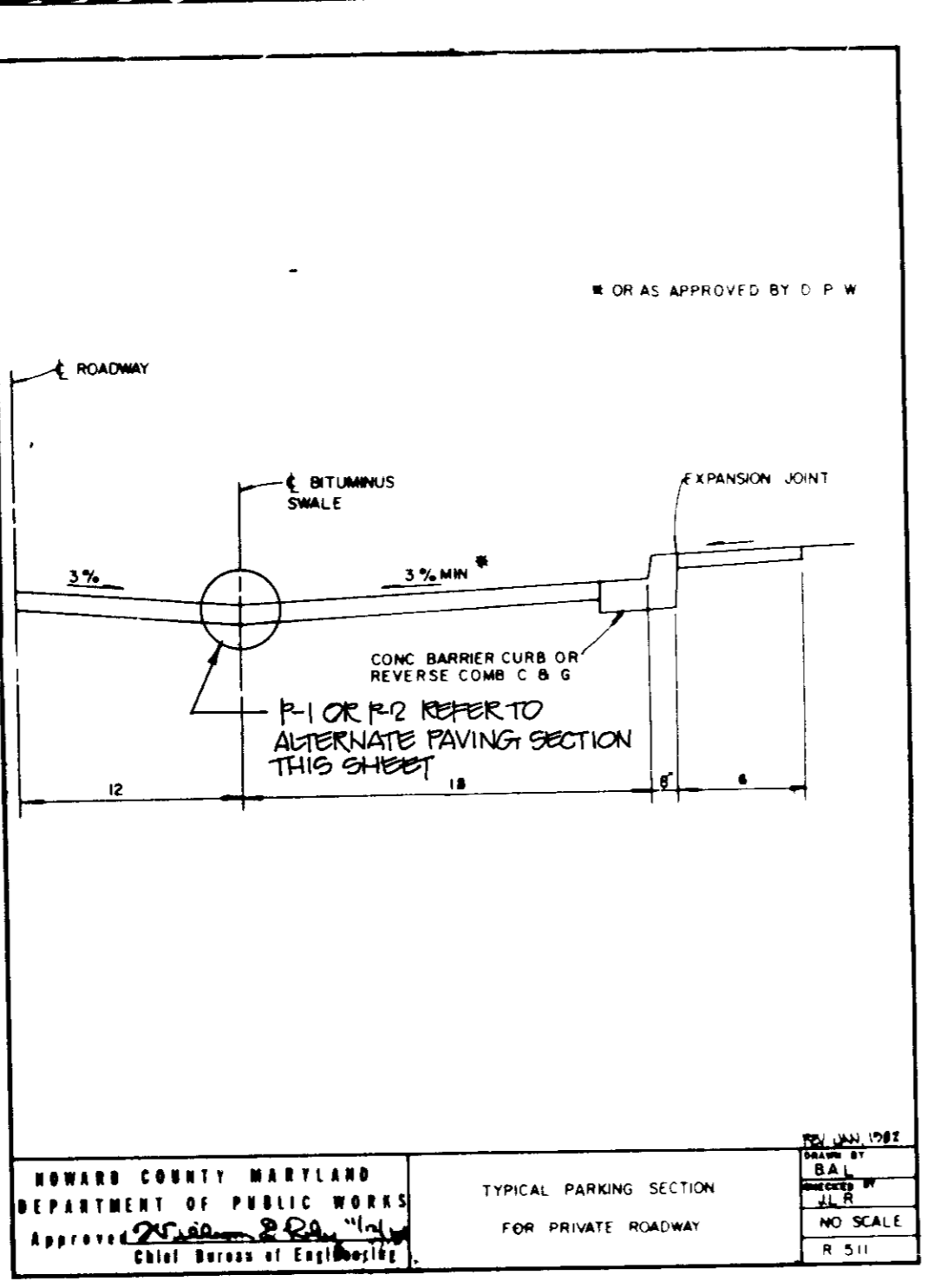
BOWLING BROOK FARMS
 SECTION 2 AREA 2
 PARCEL B-2
 RECREATION CENTER
 SIXTH ELECTION DISTRICT
 TAX MAP 47 PARCEL 141
 L.1394 F.632
 O.P.Z. FILE NOS.: S-87-78, P-87-10, F-88-40

SURVEY	DATE
DESIGN R.S.H.	12-23-87
DRAWN J.D.W./C.B.R.	SHEET
CHECKED	7 OF 8
SCALE 1" = 20'	FILE NO.
C.I. 2'	2184-1-5

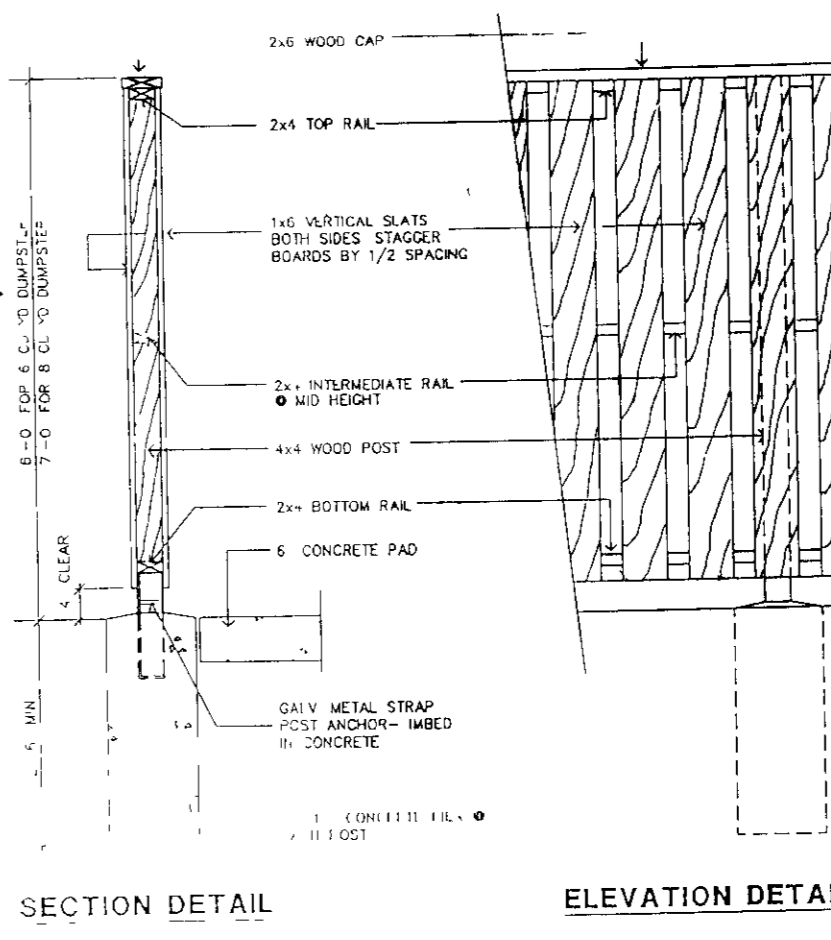
APPROVED FOR PUBLIC WATER AND PUBLIC SEWERAGE SYSTEMS
HOWARD COUNTY HEALTH DEPARTMENT
6-13-80
COUNTY HEALTH OFFICER
APPROVED HOWARD COUNTY OFFICE OF PLANNING & ZONING
6-16-80
DIRECTOR
APPROVED FOR PUBLIC WATER AND PUBLIC SEWERAGE
STORM DRAINAGE SYSTEM AND PUBLIC ROADS
HOWARD COUNTY DEPARTMENT OF PUBLIC WORKS
6/15/80
DIRECTOR
CHIEF BUREAU OF ENGINEERING
6/17/80



SECTION NUMBER	ROAD AND STREET CLASSIFICATION	PAVEMENT MATERIALS	
		FULL DEPTH BIT CONCRETE ALTERNATE	GRANULAR BASE ALTERNATES
P-1	PARKING AREAS AND TRAVELWAYS APARTMENTS AND COMMERCIAL-INDUSTRIAL ZONES WITH HEAVY TRUCKS	1 BIT CONCRETE SURFACE 4 BIT CONCRETE BASE	1 BIT CONCRETE SURFACE 2 BIT CONCRETE BASE PRIME 6 CRUSHED RUN BASE COURSE OR 4 1 1/2" ENHANCED STABILIZED AGGREGATE BASE COURSE
P-2	RESIDENTIAL ZONES LOCAL CIRCULAR TRAIL ALLEYS AND PRIVATE ROADS SERVING INDIVIDUAL PLOTS PARKING AREAS APARTMENTS AND COMMERCIAL-INDUSTRIAL ZONES WITH MORE THAN 10 HEAVY TRUCKS PER DAY	1 1/2" BIT CONCRETE SURFACE 5" BIT CONCRETE BASE	1 1/2" BIT CONCRETE SURFACE 2 1/2" BIT CONCRETE BASE PRIME 8 CRUSHED RUN BASE COURSE OR 4 1 1/2" ENHANCED STABILIZED AGGREGATE BASE COURSE
P-3	RESIDENTIAL ZONES MAJOR AND MAJOR COLLECTORS COMMERCIAL-INDUSTRIAL ZONES LOCAL CIRCULAR TRAIL ALLEYS PARKING AREAS APARTMENTS AND COMMERCIAL-INDUSTRIAL ZONES WITH MORE THAN 10 HEAVY TRUCKS PER DAY	1 1/2" BIT CONCRETE SURFACE 5" BIT CONCRETE BASE	1 1/2" BIT CONCRETE SURFACE 2 1/2" BIT CONCRETE BASE PRIME 8 CRUSHED RUN BASE COURSE OR 4 1 1/2" ENHANCED STABILIZED AGGREGATE BASE COURSE
P-4	COMMERCIAL-INDUSTRIAL ZONES MAJOR COLLECTOR	1 1/2" BIT CONCRETE SURFACE 5" BIT CONCRETE BASE	1 1/2" BIT CONCRETE SURFACE 2 1/2" BIT CONCRETE BASE PRIME 8 CRUSHED RUN BASE COURSE OR 4 1 1/2" ENHANCED STABILIZED AGGREGATE BASE COURSE



- A Specifications
- Fire Lane Signs-(Exhibit 5)
 - Size - 12" wide X 18" high
Alternate when specified: 24" wide X 30" high
 - Thickness - .080"
 - Material - Aluminum
 - Color - Reflective red letters and border on a reflective white background
 - Lettering - NO PARKING (3")
FIRE LANE (2")
DIRECTIONAL ARROW (1 1/2")
 - Tow Away Zone Signs (Exhibit 6)
 - Size - 12" wide X 6" high
 - Material type and thickness to be same as Fire Lane sign
 - Color - Red letters and border on reflective white background
 - Lettering - 2 line text using 1 inch letters
- The use of international symbol type signs is not authorized.
- The authorized sign is designated R7-201 in the Manual on Uniform Traffic Control Devices



NO.	DESCRIPTION	DATE	APPROVED	DATE
1	REVISED PART SECTION	12/28/80		
2	REVISED TO HQ CD	3/10/80		

REVISION APPROVED BY
HOWARD COUNTY MARYLAND DEPARTMENT OF PUBLIC WORKS
CHIEF BUREAU OF ENGINEERING

OWNER/DEVELOPER
GORMAN ROAD LIMITED PARTNERSHIP
C/O JAMES F. KNIGHT DEVELOPMENT CORPORATION
110 WEST ROAD, SUITE 203
TOWSON, MARYLAND 21204

BOWLING BROOK FARMS
SECTION 2 AREA 2
PARCEL B-2
RECREATION CENTER
SIXTH ELECTION DISTRICT
TAX MAP 47 L.1394
PARCEL 141 F.632
O.P.Z. FILE NOS.: S-87-78, P-87-10, F-88-40

SURVEY DATE 12-18-87
DESIGN MJK
DRAWN FSC SHEET 8 OF 8
CHECKED
SCALE AS SHOWN FILE NO. 2184-1-5
C.I.

Patton Harris Rust and Associates
A Professional Corporation
Engineers, Surveyors, Planners and Landscape Architects
7609 STANDISH PLACE ROCKVILLE, MARYLAND 20855 (301) 762-2220

DETAIL SHEET