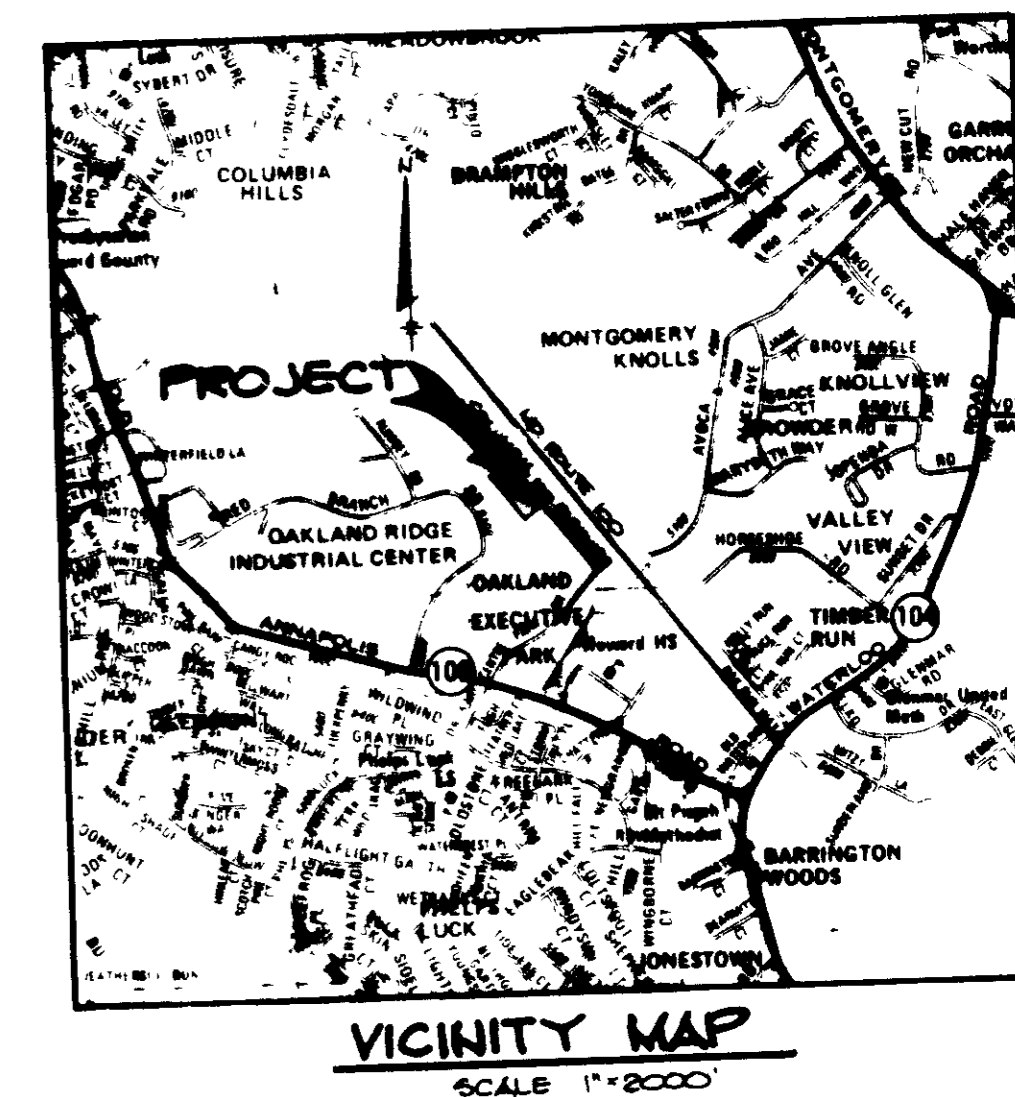


SITE DEVELOPMENT PLAN COLUMBIA 100 BUSINESS CENTER

2nd ELECTION DISTRICT HOWARD COUNTY, MARYLAND

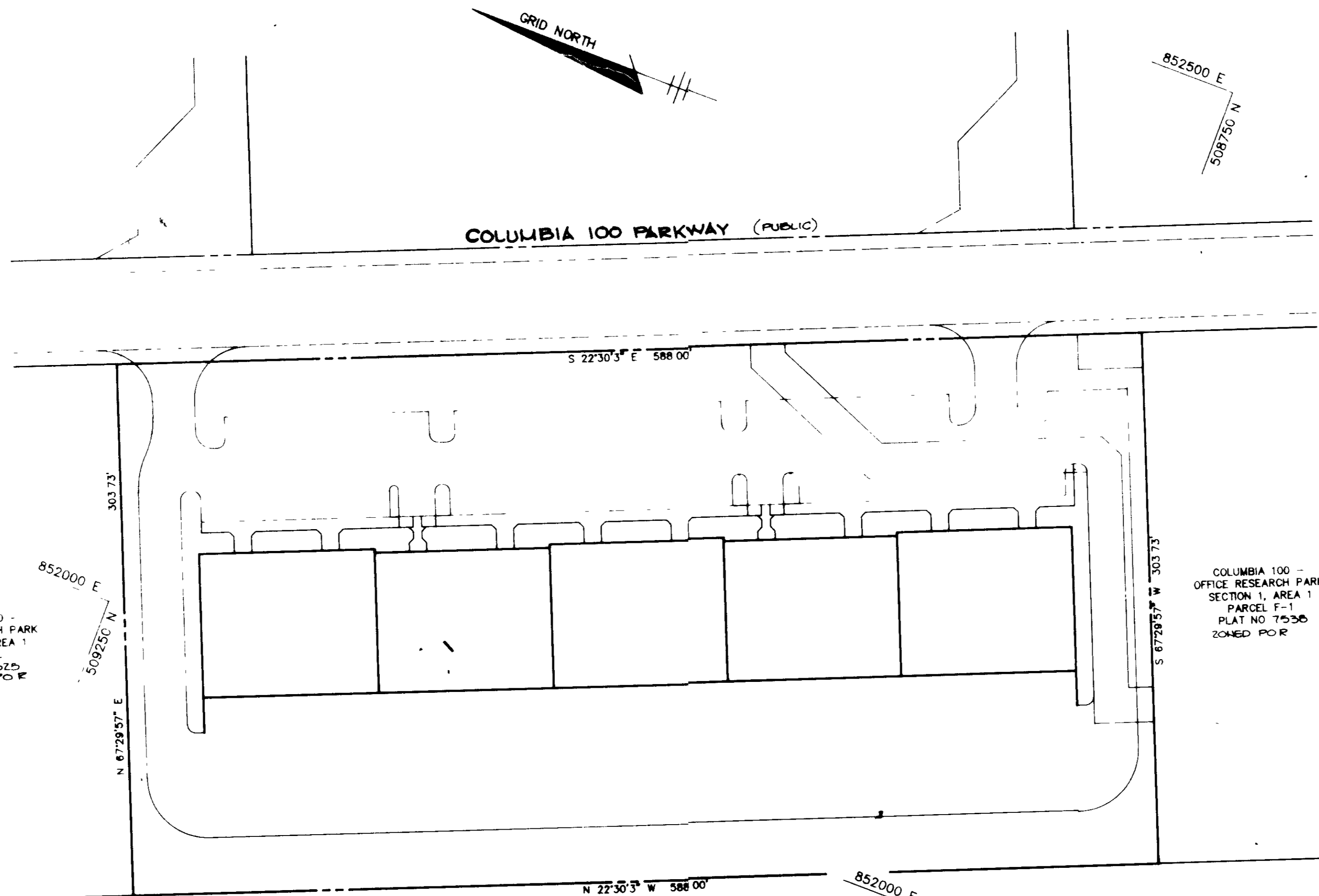


VICINITY MAP
SCALE 1"=2000'

SHEET INDEX	
NO.	DESCRIPTION
1	TITLE SHEET
2	SITE DEVELOPMENT PLAN
3	GRADING, SEWERAGE, CONTROL AND DRAINAGE AREA MAP
4	PROFILES AND DETAIL SHEET
5	PLANTING PLAN

GENERAL NOTES

- 1. ALL WATER LINES SHALL BE CONSTRUCTED A MINIMUM OF 42" COVER BELOW FINISHED GRADE.
- 2. ALL WORK SHALL BE PERFORMED IN ACCORDANCE WITH THE HOWARD COUNTY DESIGN MANUAL VOLUME IV OF STANDARD SPECIFICATIONS AND DETAILS FOR CONSTRUCTION.
- 3. APPROXIMATE LOCATION OF EXISTING UTILITIES ARE SHOWN FROM BEST AVAILABLE INFORMATION. THE CONTRACTOR SHALL TAKE ALL NECESSARY PRECAUTIONS TO PROTECT THE EXISTING UTILITIES AND MAINTAIN UNINTERRUPTED SERVICE. ANY DAMAGE INCURRED DUE TO CONTRACTOR'S OPERATION SHALL BE REPAIRED IMMEDIATELY AT THE CONTRACTOR'S EXPENSE.
- 4. THE CONTRACTOR SHALL TEST PIT EXISTING UTILITIES AT LEAST FIVE (5) DAYS BEFORE STARTING WORK SHOWN ON THESE DRAWINGS TO VERIFY THE LOCATION AND DEPTH. THE CONTRACTOR SHALL NOTIFY THE ENGINEER IMMEDIATELY OF LOCATION OF UTILITIES IN OTHER THAN SHOWN.
- 5. CONTRACTOR TO NOTIFY THE FOLLOWING UTILITIES OR AGENCIES AT LEAST FIVE (5) DAYS BEFORE STARTING WORK SHOWN ON THESE DRAWINGS:
 - TELEPHONE UTILITY 1-800-457-7878
 - AT&T TELEPHONE COMPANY 225-0070
 - HOWARD COUNTY BUREAU OF UTILITIES 402-2500
 - STATE CABLE LOCATION DIVISION 304-7555
 - MARYLAND GAS & ELECTRIC COMPANY 675-0812
 - STATE HIGHWAY ADMINISTRATION 742-2222
 - HOWARD COUNTY CONSTRUCTION INSPECTION SERVICE EXTENSION 124 HOURS NOTICE PRIOR TO COMMENCEMENT OF WORK
- 6. ALL INFANTS SHALL BE CONSTRUCTED IN ACCORDANCE WITH HOWARD COUNTY STANDARDS.
- 7. ALL PIPE ELEVATIONS SHOWN ARE INVERT ELEVATIONS.
- 8. THE CONTRACTOR SHALL PROVIDE A JOINT IN ALL SEWER MAINS WITHIN 2' OF EXTERIOR MANHOLE WALLS.
- 9. PROFILE STATIONS SHALL BE ADJUSTED AS NECESSARY TO CONFORM TO PLAN DIMENSIONS.
- 10. NO PIPE SHALL BE LAID UNTIL LINES OF EXCAVATION HAVE BEEN BROUGHT TO SURFACE.
- 11. TOPO TAKEN FROM FIELD RUN SURVEY DATED 5-87 BY THE RIEMER GROUP, INC.
- 12. ALL PLAN DIMENSIONS ARE TO FACE OF CURB UNLESS OTHERWISE NOTED.
- 13. ALL STORM DRAIN PIPE BEDDING SHALL BE AS SHOWN IN DETAIL G-1 OF TRENCH IN ROCK OR TRENCH IN EARTH AS DETERMINED BY FIELD CONDITIONS IN VOL. IV OF HOWARD COUNTY DESIGN MANUAL UNLESS OTHERWISE DIRECTED BY THE ENGINEER OR AS SHOWN ON THE DRAWINGS.
- 14. THE DEVELOPER IS RESPONSIBLE FOR THE ACQUISITION OF ALL EASEMENTS, RIGHTS AND/OR RIGHTS-OF-WAY THAT MAY BE REQUIRED FOR THE SEDIMENT AND EROSION CONTROL PRACTICES, STORM WATER MANAGEMENT PRACTICES AND THE DISCHARGE OF STORM WATER ONTO OR ACROSS ADJACENT OR DOWNSTREAM PROPERTIES INCLUDED IN THIS PLAN. HE IS ALSO RESPONSIBLE FOR THE ACQUISITION OF ALL EASEMENTS, RIGHTS AND/OR WORK ON ADJACENT PROPERTIES INCLUDED IN THIS PLAN.
- 15. THE OWNER SHALL PROVIDE A SEPARATE AND INDEPENDENT SEWER CONNECTION FOR EACH TENANT OR OCCUPANT OF ANY BUILDING SHOWN ON THIS SITE DEVELOPMENT PLAN WHO WILL DISCHARGE NON-DOMESTIC WASTE TO THE PUBLIC SEWERAGE SYSTEM IF THIS WASTE IS REGULATED UNDER SECTION 12.2.A OF THE HOWARD COUNTY CODE. EACH SEPARATE AND INDEPENDENT SEWER CONNECTION SHALL INCLUDE A STANDARD MANHOLE AND OTHER WASTE PRETREATMENT DEVICES AS REQUIRED AND APPROVED BY HOWARD COUNTY WASTE LINES ON THE INTERIOR OF THE BUILDING SHALL BE DEMONSTRATED OR MODIFIED SUCH THAT NON-DOMESTIC WASTE WILL BE DISCHARGED TO THE SEPARATE AND INDEPENDENT SEWER CONNECTION. NO TENANT OR OCCUPANT OF ANY BUILDING SHOWN ON THIS SITE DEVELOPMENT PLAN SHALL DISCHARGE REGULATED NON-DOMESTIC WASTE TO THE PUBLIC SEWERAGE SYSTEM PRIOR TO INSTALLATION OF THE SEPARATE AND INDEPENDENT SEWER CONNECTION AND RELATED INTERIOR WASTE LINES. THE ABOVE REQUIREMENTS SHALL APPLY TO ALL INITIAL AND FUTURE OCCUPANTS OF TENANTS.
- 16. PREVIOUS OFFICE OF PLANNING AND ZONING REFERENCE NUMBERS: 6-85-56 P, 85-44 PD, 77 PD, 80A F, 87 A2, 87 B, 88



COLUMBIA 100 PARKWAY (PUBLIC)

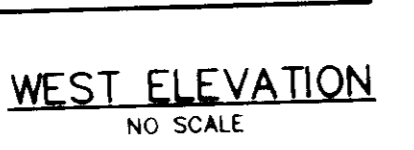
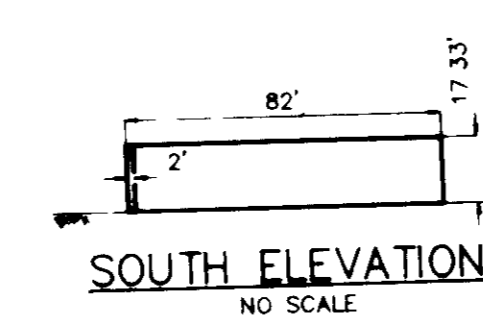
COLUMBIA 100 - OFFICE RESEARCH PARK SECTION 1, AREA 1 PARCEL F-1 PLAT NO. 7535 ZONED POB

PLAT OF OAKLAND RIDGE INDUSTRIAL PARK SECTION 2 PG. 15, F. B. ZONED I-1

PLAN SCALE 1"=50'

SITE TABULATION

NO.	DESCRIPTION	NO. OF SPACES
1	Office Building	36 Spaces
2	Building (Main)	40 Spaces
3	Building (Side)	50 Spaces
4	Building (East)	39 Spaces
5	Handicapped Spaces	3
6	Other	10



ADDRESS CHART	
LOT NUMBER	STREET ADDRESS
PAR. G-1	8555 COLUMBIA 100 PARKWAY

APPROVED FOR PUBLIC WATER AND PUBLIC SEWERAGE SYSTEMS,
HOWARD COUNTY HEALTH DEPARTMENT

J. M. Boyd 7/26/88
DATE

APPROVED: HOWARD COUNTY OFFICE OF PLANNING AND ZONING

W. A. H. 8-1-88
PLANNING DIRECTOR DATE

Frank J. Langford 7-28-88
CHIEF, DIVISION OF COMMUNITY PLANNING AND LAND DEVELOPMENT DATE

APPROVED FOR PUBLIC WATER, PUBLIC SEWERAGE, STORM DRAINAGE SYSTEMS AND PUBLIC ROADS

HOWARD COUNTY DEPARTMENT OF PUBLIC WORKS

James J. H. 7/21/88
DIRECTOR DATE

M. J. P. 7-23-88
CHIEF, BUREAU OF ENGINEERING DATE

DATE	NO.	REVISION

OWNER/DEVELOPER

JEROME WILLIAMS
6666 DOBBIN ROAD
COLUMBIA MARYLAND
21045

PROJECT
COLUMBIA 100 BUSINESS CENTER

AREA TAX MAP 80 PARCEL G-1 PLAT NO. 7747
COLUMBIA 100 OFFICE RESEARCH PARK SEC 1, AREA 2
2ND ELECTION DISTRICT, HOWARD COUNTY, MARYLAND

TITLE SHEET

APPROVED
PLANNING BOARD
OF HOWARD COUNTY

DATE 4-27-88

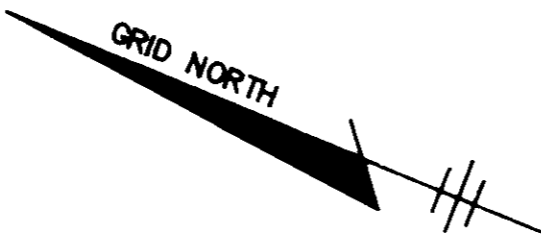
THE RIEMER GROUP, INC.
The Riemer Group, Inc. A Land Planning, Design & Civil Engineering Firm
3105 North Ridge Road, Ellicott City, Maryland 21043 (301) 461-2690

DATE	DESIGNED BY	DRAWN BY	PROJECT NO.	DATE	SCALE
8-20-88	P. B. C.	M.A.D.	44705	8-9-88	AS SHOWN

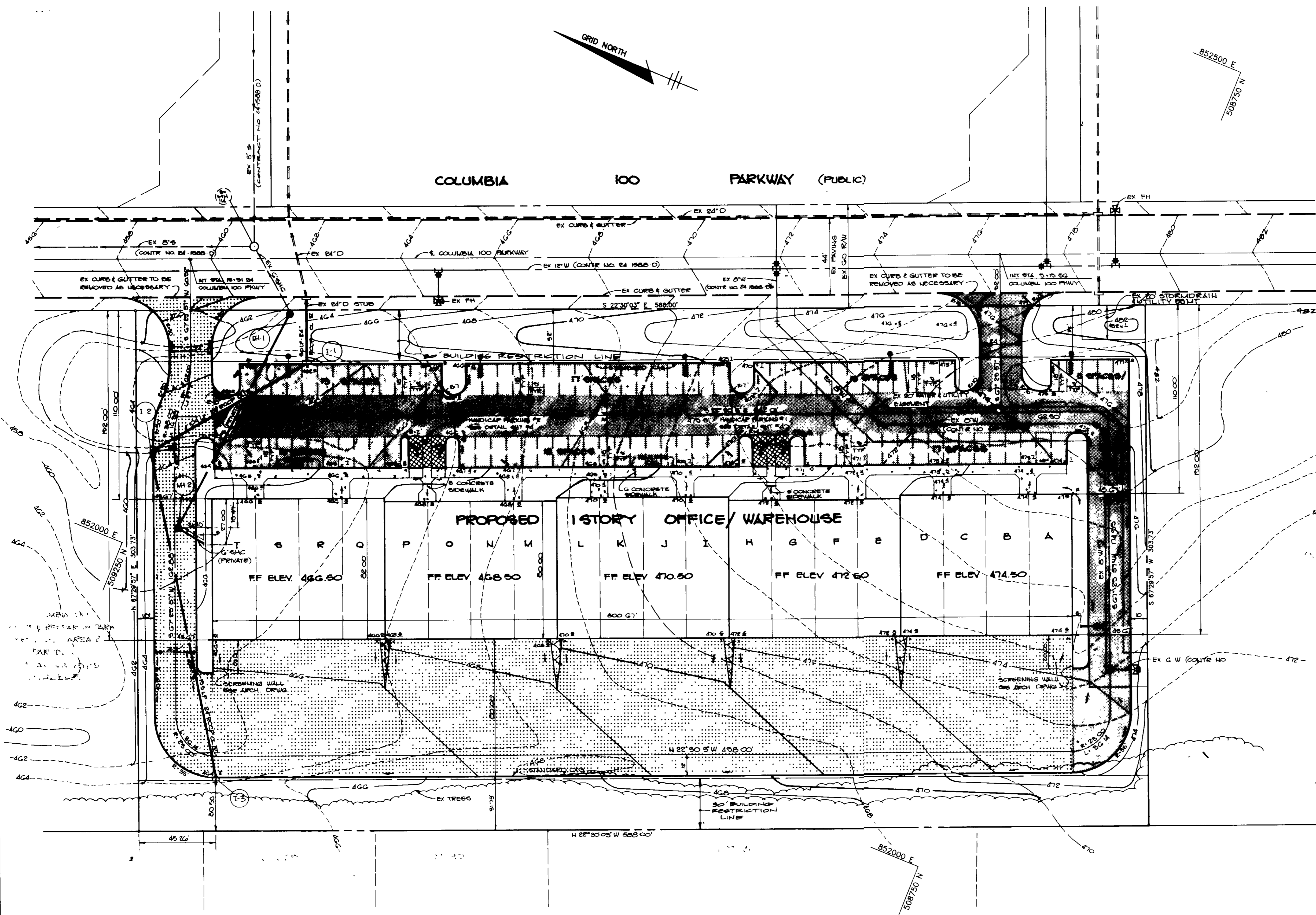
PROFESSIONAL ENGINEER
ARTHUR C. WUEGGERS
No. 2306

SDP-88-116

SUBDIVISION NAME		SECT./AREA	LOT/PARCEL #		
COLUMBIA 100 - OFFICE RESEARCH PARK		1/P	G-1		
PLAT # OR L/F	BLOCK #	ZONE	TAX MAP	ELEC. DIST.	CENSUS TR.
7747	18	POB			6025.02
WATER CODE		SEWER CODE			
602		6021400			



COLUMBIA 100 PARKWAY (PUBLIC)



PROPOSED 1 STORY OFFICE/ WAREHOUSE

S R D P O N M L K J I H G F E D C B A

FF ELEV. 466.50 FF ELEV. 468.50 FF ELEV. 470.50 FF ELEV. 472.50 FF ELEV. 474.50

LEGEND

- P-1 PAVING
- P-2 PAVING
- P-3 PAVING
- CONCRETE
- ASPHALT GRADE TRANSITION
- CONCRETE PAVERS (SEE DETAIL SHEET 4)
- LIGHT POLES

NOTES

1. ALL CURB RADII 5' UNLESS OTHERWISE NOTED
2. CONTRACTOR TO FIELD LOCATE 6 SEWER CONNECTION MH-1, AND 24" STORM DRAIN CONNECTION
3. EXISTING CURB AND GUTTER AT PROPOSED ENTRANCES TO BE REMOVED AS NECESSARY
4. ALL DIMENSIONS TO FACE OF CURB, FACE OF BUILDING, OR CENTERLINE OF DRIVE LANE (WHERE APPLICABLE) UNLESS OTHERWISE NOTED

APPROVED FOR PUBLIC WATER AND PUBLIC SEWERAGE SYSTEMS, HOWARD COUNTY HEALTH DEPARTMENT

Joyce M. Bond M.D./gdm 7/26/88
 COUNTY HEALTH OFFICER DATE

APPROVED: HOWARD COUNTY OFFICE OF PLANNING AND ZONING.

W.A.H. 8-1-88
 PLANNING DIRECTOR DATE

Frank J. Z. Pugh 7-25-88
 CHIEF, DIVISION OF COMMUNITY PLANNING AND LAND DEVELOPMENT DATE

APPROVED: FOR PUBLIC WATER, PUBLIC SEWERAGE, STORM DRAINAGE SYSTEMS AND PUBLIC ROADS.

HOWARD COUNTY DEPARTMENT OF PUBLIC WORKS

James M. Shaw 7/26/88
 DIRECTOR DATE

R. C. ... 7-21-88
 CHIEF, BUREAU OF ENGINEERING DATE

DATE	NO	REVISION

OWNER/DEVELOPER
 JEROME W. WILLIAMS
 6660 DOBBIN ROAD
 COLUMBIA, MARYLAND
 21046

PROJECT
COLUMBIA 100 BUSINESS CENTER

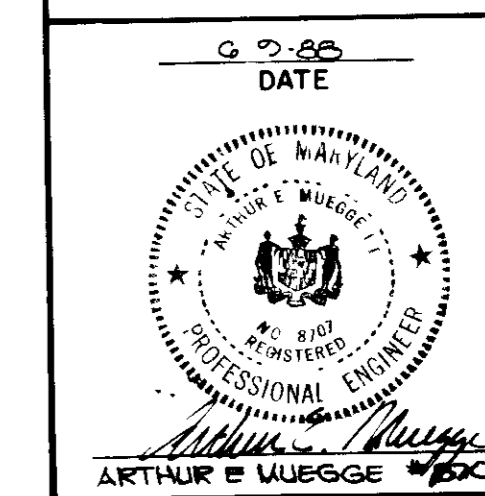
AREA TAX MAP 30 PARCEL G-1 PLAT NO 7747
 COLUMBIA 100 - OFFICE RESEARCH PARK SECTION 1, AREA 2
 2ND ELECTION DISTRICT, HOWARD COUNTY, MARYLAND

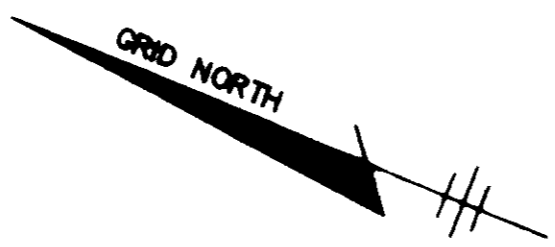
TITLE
SITE DEVELOPMENT PLAN

THE RIEMER GROUP, INC.
 The Riemer Group, Inc. A Land Planning, Design & Civil Engineering Firm
 3105 North Ridge Road, Ellicott City, Maryland 21043 (301) 461 2690

APPROVED
 PLANNING BOARD
 OF HOWARD COUNTY
 DATE 4-27-88

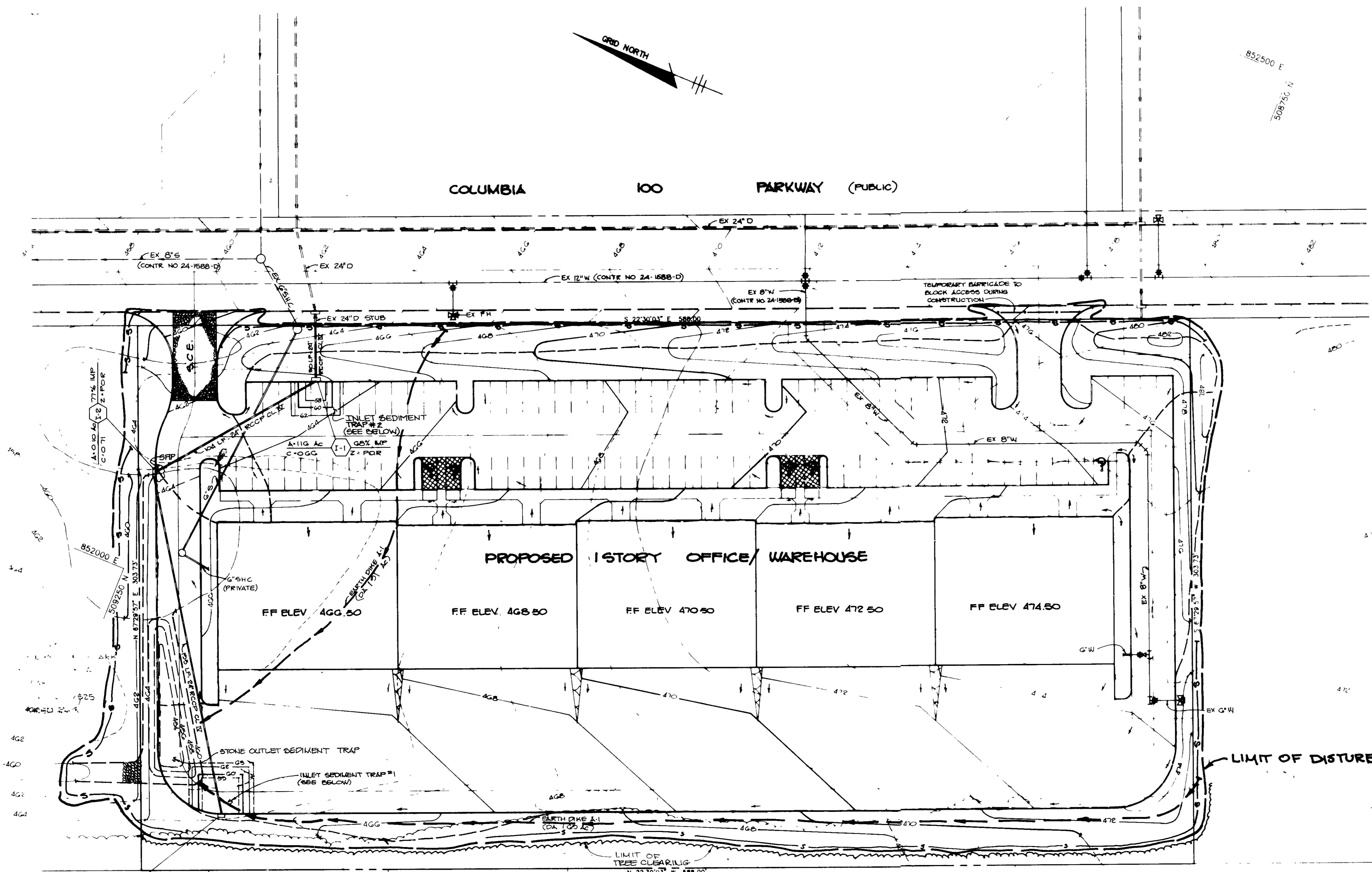
DATE	DESIGNED BY	DRAWN BY	PROJECT NO	DATE	SCALE	DRAWING NO
G-9-88	P-88-44	PB-177	44708	G-9-88	1"=30'	2 OF 3
PB-198	F-87-82	F-88-183				





852500 E
509750 N

COLUMBIA 100 PARKWAY (PUBLIC)

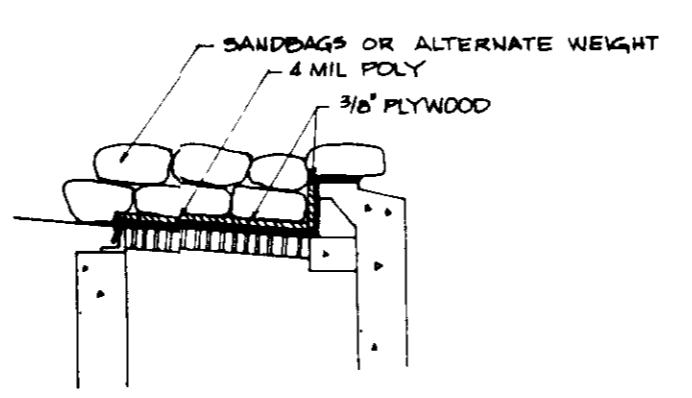


STRUCTURE SCHEDULE					
NO	TYPE	T C ELEV	INV IN	INV OUT	REMARKS
I-1	A-5	462.58	454.67	454.57	HO CO STD DTL SD 4.01
I-2	A-5	464.26	456.10	456.00	HO CO STD DTL SD 4.01
I-3	A-10	464.75	---	460.05	HO CO STD DTL SD 4.02

INLET SEDIMENT TRAP		#1	#2
DRAINAGE AREA		2.22 Ac	1.16 Ac
VOL REQUIRED (Cu FT)		3950 G	2088
VOL PROVIDED (Cu FT)		4000	2200
BOTTOM ELEV		459.0	458.0
BOTTOM DIM		20' X 20'	10' X 10'
CREST ELEV		463.0	462.0
CLEANOUT ELEV		461.0	460.0

STONE OUTLET SEDIMENT TRAP	
DRAINAGE AREA	3.00 Ac
VOL REQUIRED (Cu FT)	6480
VOL PROVIDED (Cu FT)	860
BOTTOM ELEV	454.0
BOTTOM DIM	68' X 14'
CREST ELEV	460.0
CLEANOUT ELEV	460.0

- 8. Curb Inlet Protection.**
- Attach a continuous piece of wire mesh (30" min width by throat length plus 4") to the 2" x 4" weir (measuring throat length plus 2") as shown on the standard drawing.
 - Place a piece of approved filter cloth (40-85 sigma) of the same dimensions as the wire mesh over the wire mesh and securely attach to the 2" x 4" weir.
 - Securely nail the 2" x 4" weir to 9" long vertical spacers to be located between the weir and inlet face (max. 6" apart).
 - Place the assembly against the inlet throat and nail (minimum 2" lengths of 2" x 4" to the top of the weir at spacer locations. These 2" x 4" members shall extend across the inlet top and be held in place by sandbags or alternate weight.
 - The assembly shall be placed so that the end spacers are a minimum 1' beyond both ends of the throat opening.
 - Form the wire mesh and filter cloth to the concrete gutter and against the face of curb on both sides of the inlet. Place clean 2" stones over the wire mesh and filter fabric in such a manner as to prevent water from entering the inlet under or around the filter cloth.
 - This type of protection must be inspected frequently and the filter cloth and stone replaced when clogged with sediment.
 - Assure that storm flow does not bypass inlet by installing temporary earth or asphalt dikes directing flow into inlet.



STONE FILTER INLET PROTECTION
NO SCALE

LEGEND

- SILT FENCE
- LIMIT OF DISTURBANCE
- STABILIZED CONSTRUCTION ENTRANCE
- STONE FILTER INLET PROTECTION (SEE DETAIL SHEET 4)

- NOTES**
- GRADING SHOWN AROUND INLET SEDIMENT TRAPS ARE TEMPORARY. FINAL GRADING TO BE COMPLETED FOLLOWING SEDIMENT CONTROL.
 - SEE SITE PLAN FOR FINE GRADING.

APPROVED
PLANNING BOARD
OF HOWARD COUNTY
DATE 4-27-88

BY THE DEVELOPER:
"I/WE CERTIFY THAT ALL DEVELOPMENT AND CONSTRUCTION WILL BE DONE ACCORDING TO THIS PLAN, AND THAT ANY RESPONSIBLE PERSONNEL INVOLVED IN THE CONSTRUCTION PROJECT WILL HAVE A CERTIFICATE OF ATTENDANCE AT A DEPARTMENT OF NATURAL RESOURCES APPROVED TRAINING PROGRAM FOR THE CONTROL OF SEDIMENT AND EROSION BEFORE BEGINNING THE PROJECT. I ALSO AUTHORIZE PERIODIC ON-SITE INSPECTION BY THE HOWARD SOIL CONSERVATION DISTRICT."
Jerome W. Williams 5/22/88
DEVELOPER DATE

BY THE ENGINEER:
"I CERTIFY THAT THIS PLAN FOR EROSION AND SEDIMENT CONTROL REPRESENTS A PRACTICAL AND WORKABLE PLAN BASED ON MY PERSONAL KNOWLEDGE OF THE SITE CONDITIONS AND THAT IT WAS PREPARED IN ACCORDANCE WITH THE REQUIREMENTS OF THE HOWARD SOIL CONSERVATION DISTRICT."
Arthur E. Wuegge 6/1/88
ENGINEER DATE

REVIEWED FOR HOWARD S.C.D. NAME
AND MEETS TECHNICAL REQUIREMENTS
J. Williams 7/16/88 /DATE
U.S. SOIL CONSERVATION SERVICE

THIS DEVELOPMENT PLAN IS APPROVED FOR SOIL EROSION AND SEDIMENT CONTROL BY THE HOWARD SOIL CONSERVATION DISTRICT.
J. Williams /DATE
HOWARD S.C.D.

APPROVED FOR PUBLIC WATER AND PUBLIC SEWERAGE SYSTEM HOWARD COUNTY HEALTH DEPARTMENT

Joyce M. Boyd M.D. 7/26/88 /DATE
COUNTY HEALTH OFFICER

APPROVED HOWARD COUNTY OFFICE OF PLANNING AND ZONING
W. Williams 8.1.88 /DATE
PLANNING DIRECTOR

Martha S. Laughlin 7-29-88 /DATE
CHIEF, DIVISION OF COMMUNITY PLANNING AND LAND DEVELOPMENT

APPROVED FOR PUBLIC WATER, PUBLIC SEWERAGE, STORM DRAINAGE SYSTEMS AND PUBLIC ROADS
HOWARD COUNTY DEPARTMENT OF PUBLIC WORKS

Robert J. Shaw 7.2.88 /DATE
DIRECTOR

William E. Ray 7.21.88 /DATE
CHIEF, BUREAU OF ENGINEERING

C-20-88 | REVISED STONE OUTLET SEDIMENT TRAP
DATE NO REVISION

OWNER DEVELOPER
JEROME W. WILLIAMS
6660 DORRIN ROAD
COLUMBIA MARYLAND
21045

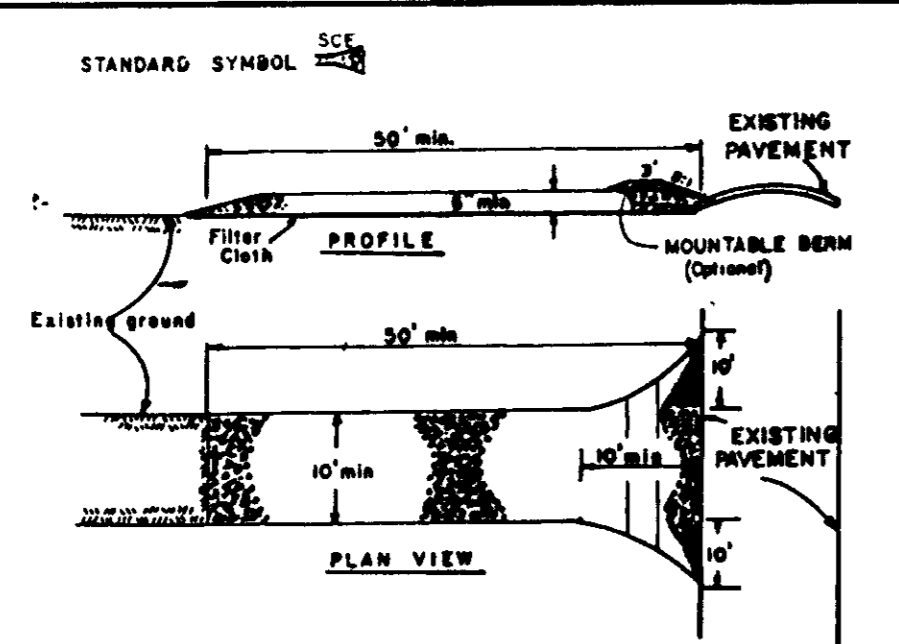
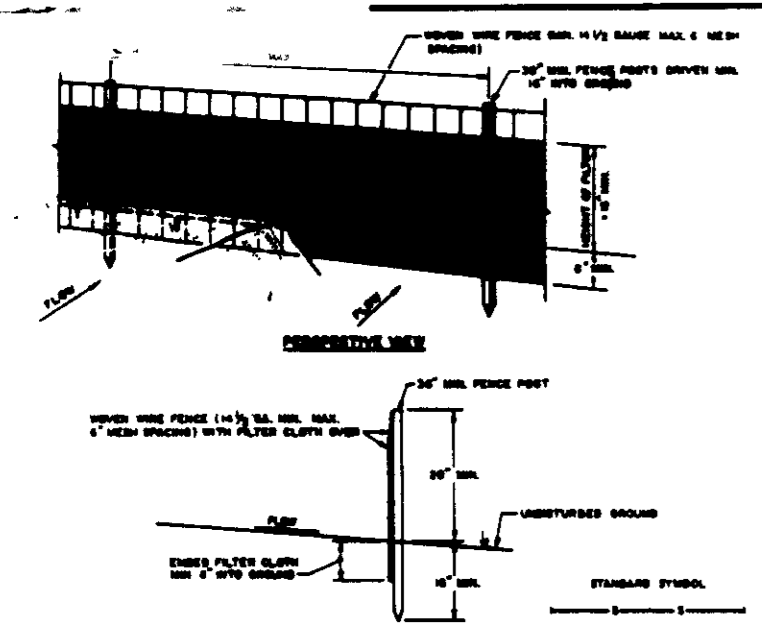
PROJECT
COLUMBIA 100 BUSINESS CENTER

AREA TAX MAP 30 PARCELS PLAT 47 7747
COLUMBIA 100 OFFICE RESEARCH PARK SECTION 1 AREA 2
2ND ELECTION DISTRICT, HOWARD COUNTY MARYLAND

TITLE
GRADING, SEDIMENT CONTROL
AND DRAINAGE AREA MAP

THE RIEMER GROUP, INC.
The Riemer Group, Inc. A Land Planning, Design & Civil Engineering Firm
3105 North Ridge Road, Ellicott City, Maryland 21043 (301) 461-2941

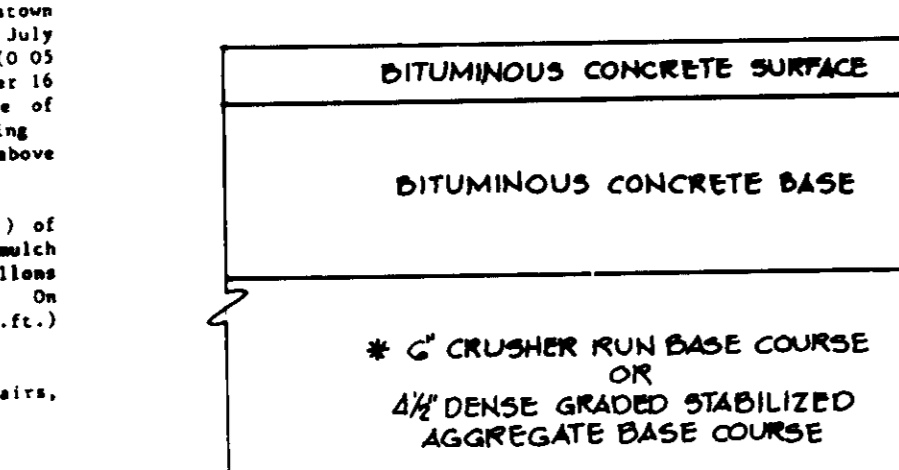
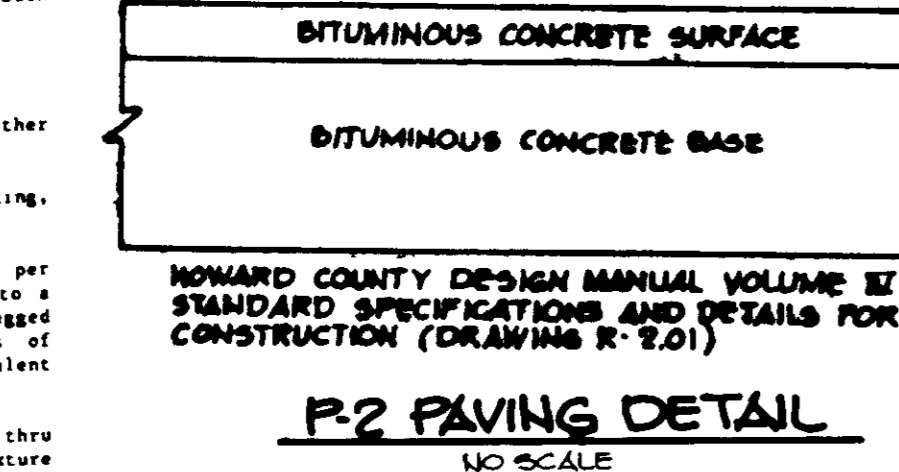
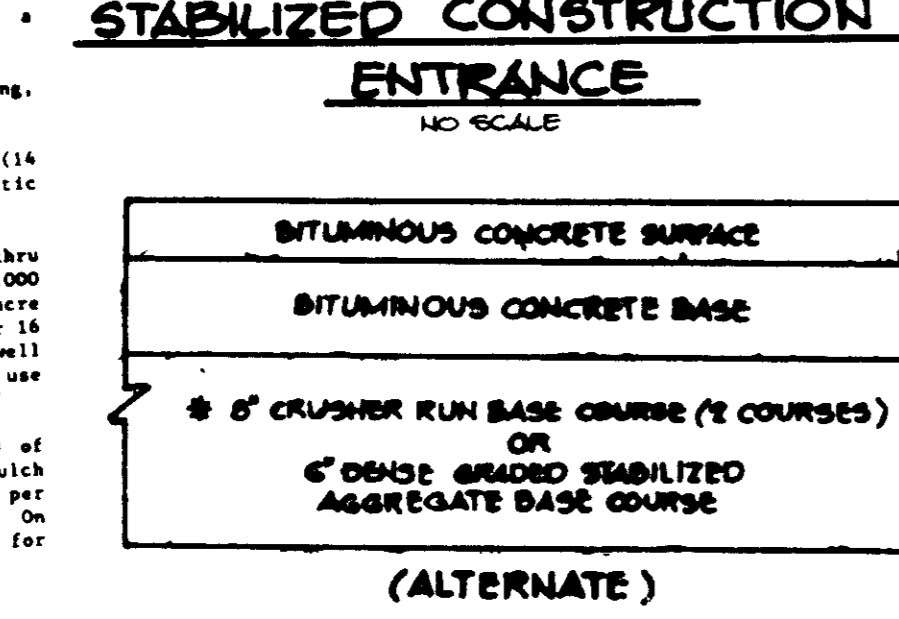
DATE 6-2-88
DESIGNED BY W.C.W.
DRAWN BY M.A.D.
PROJECT NO 44703
DATE 6-2-88
SCALE 1"=30'
DRAWING NO 3 OF 5



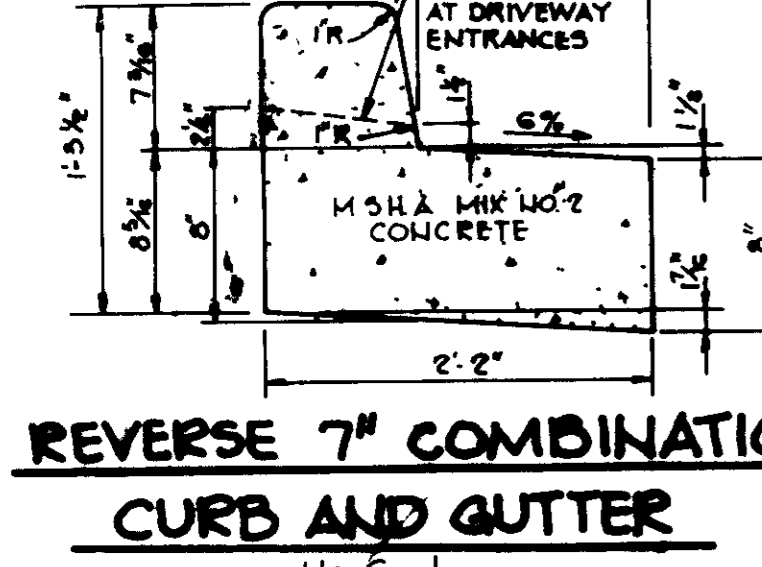
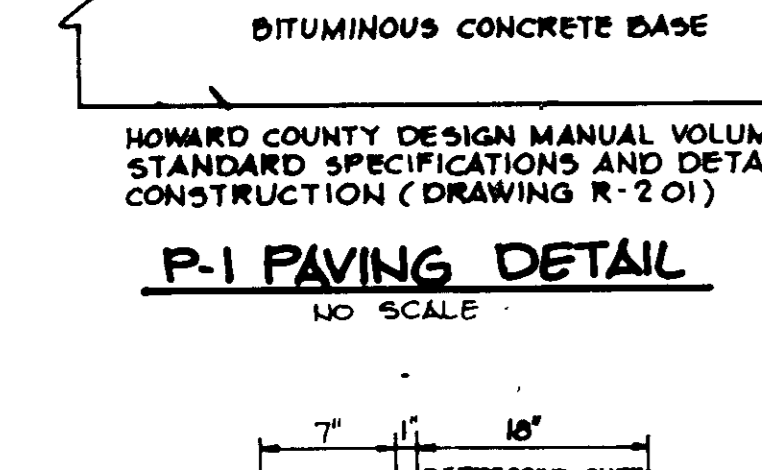
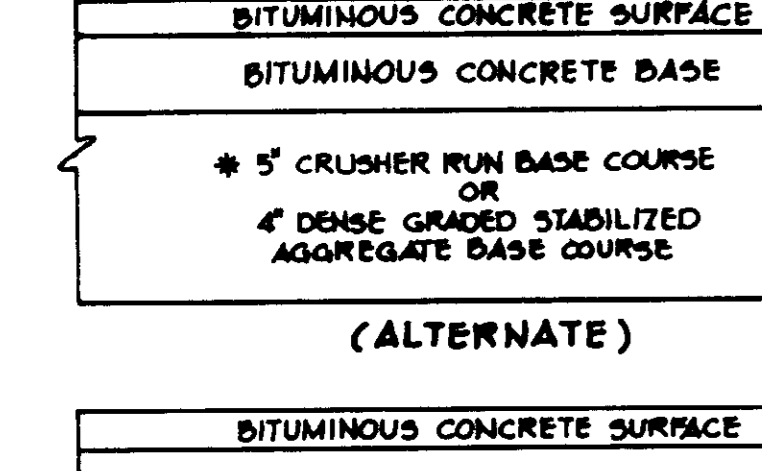
CONSTRUCTION SPECIFICATIONS
1. Stone Size - Use 2" stone, or recycled concrete equivalent.
2. Length - As required, but not less than 36 feet (except on a single rest- door that where a 36 foot minimum length would apply).

CONSTRUCTION NOTES FOR STABILIZED SALT PILE
1. WHEN THE PRICE IS NOT STATED, ALL MATERIALS SHALL BE OF THE BEST QUALITY AVAILABLE TO THE TRADE AT THE TIME OF BIDDING.

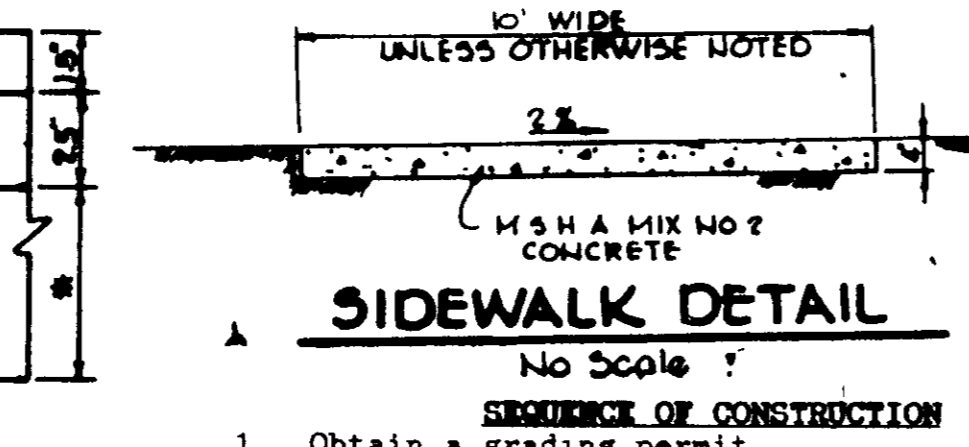
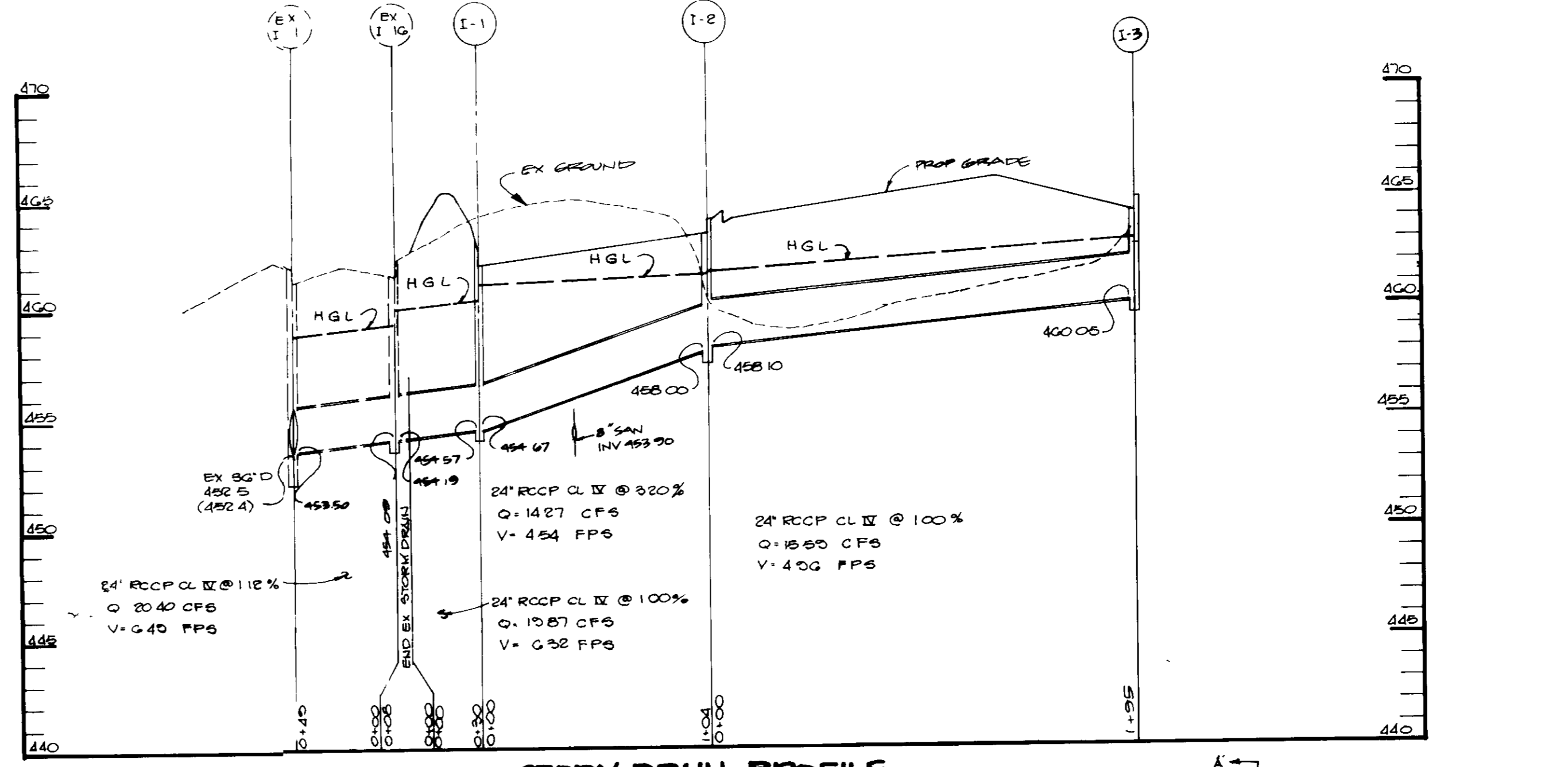
TEMPORARY SEEDING NOTES
Apply to graded or cleared areas likely to be redistributed where a short-term vegetative cover is needed.



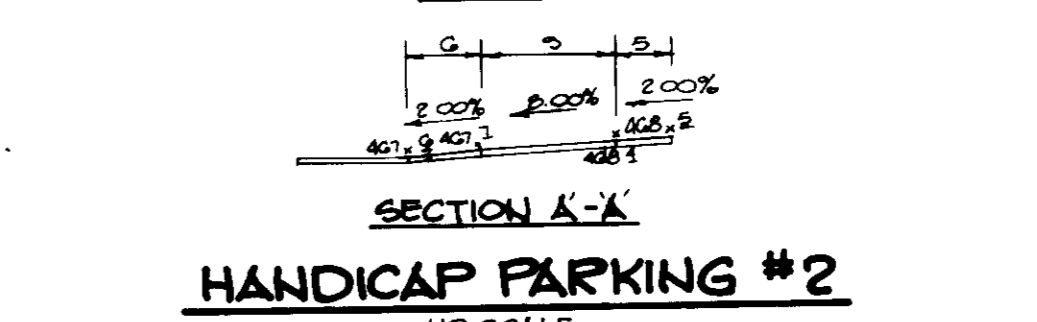
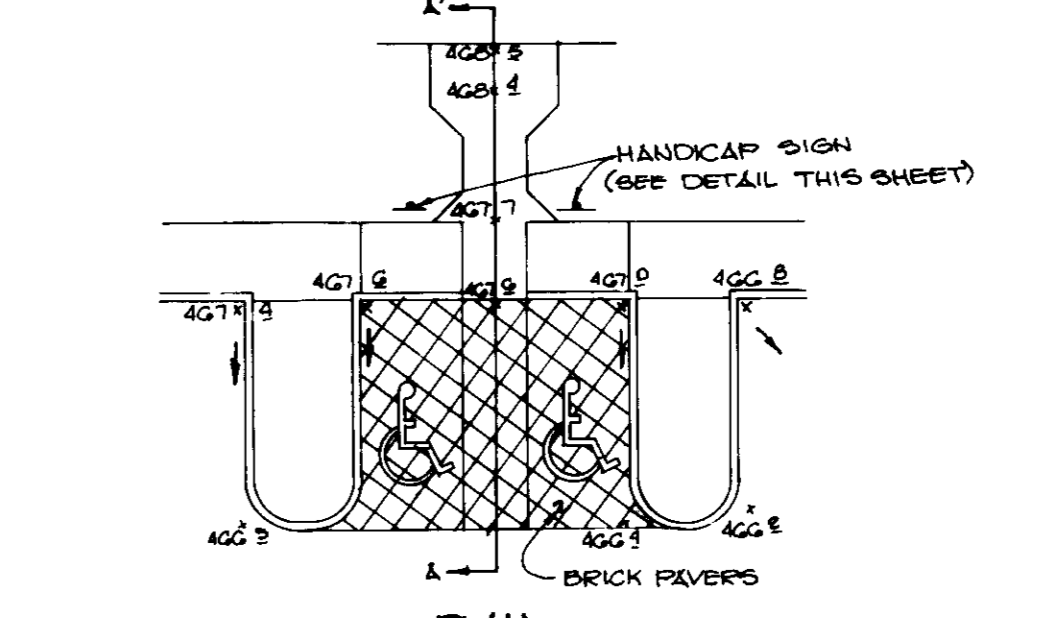
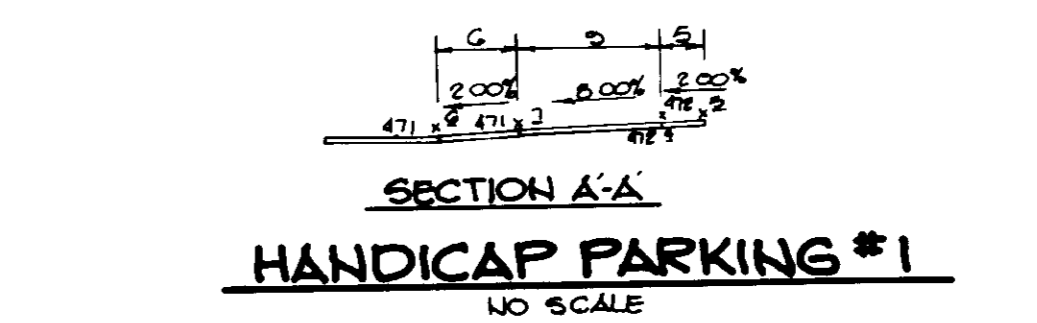
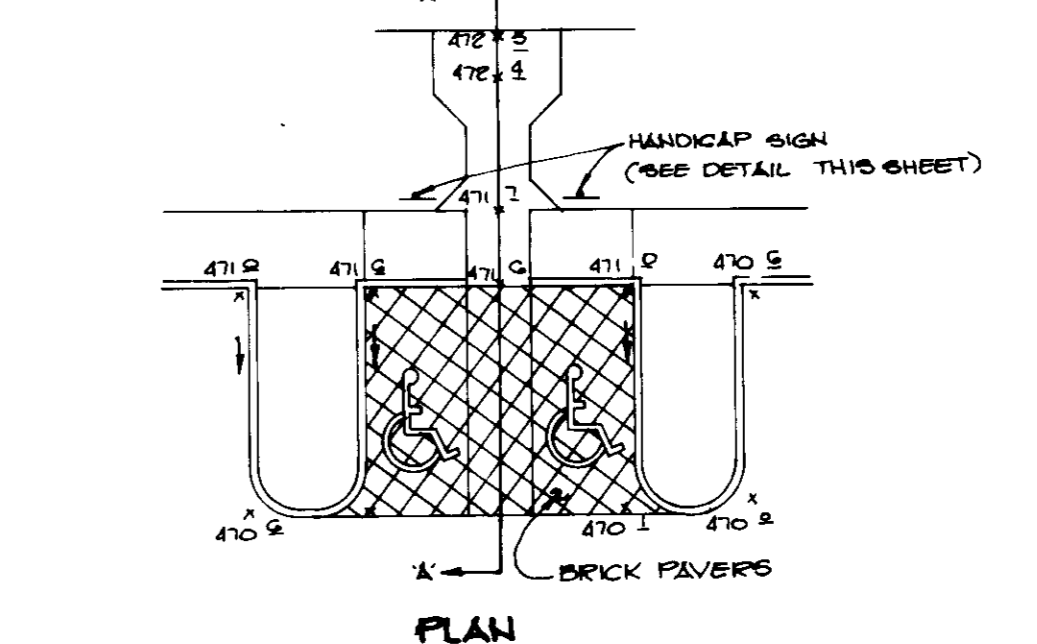
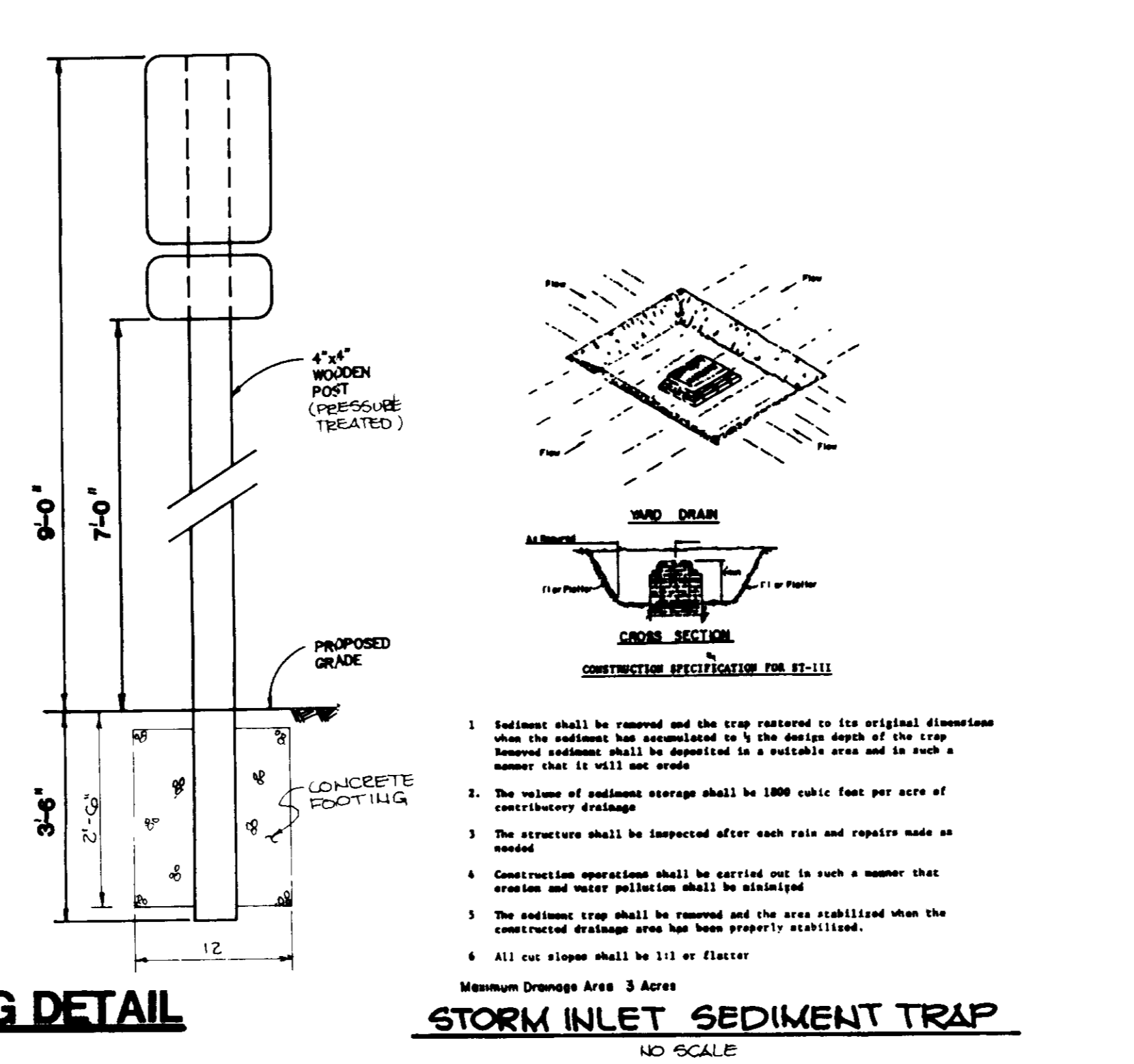
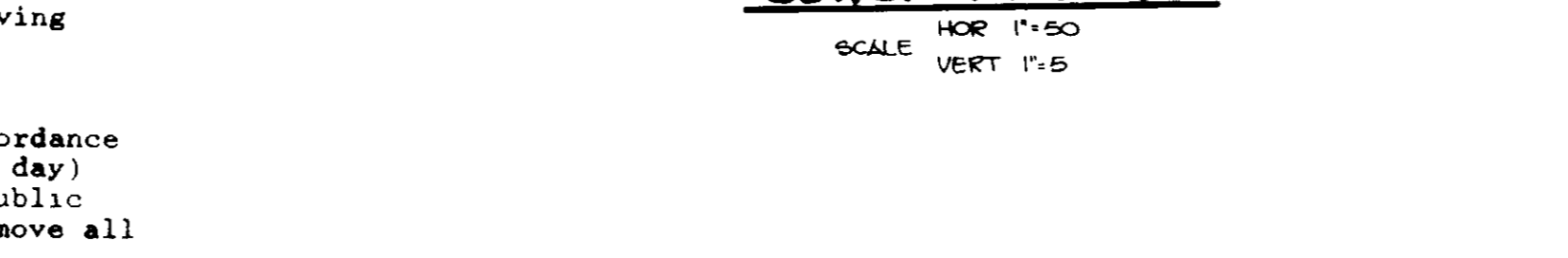
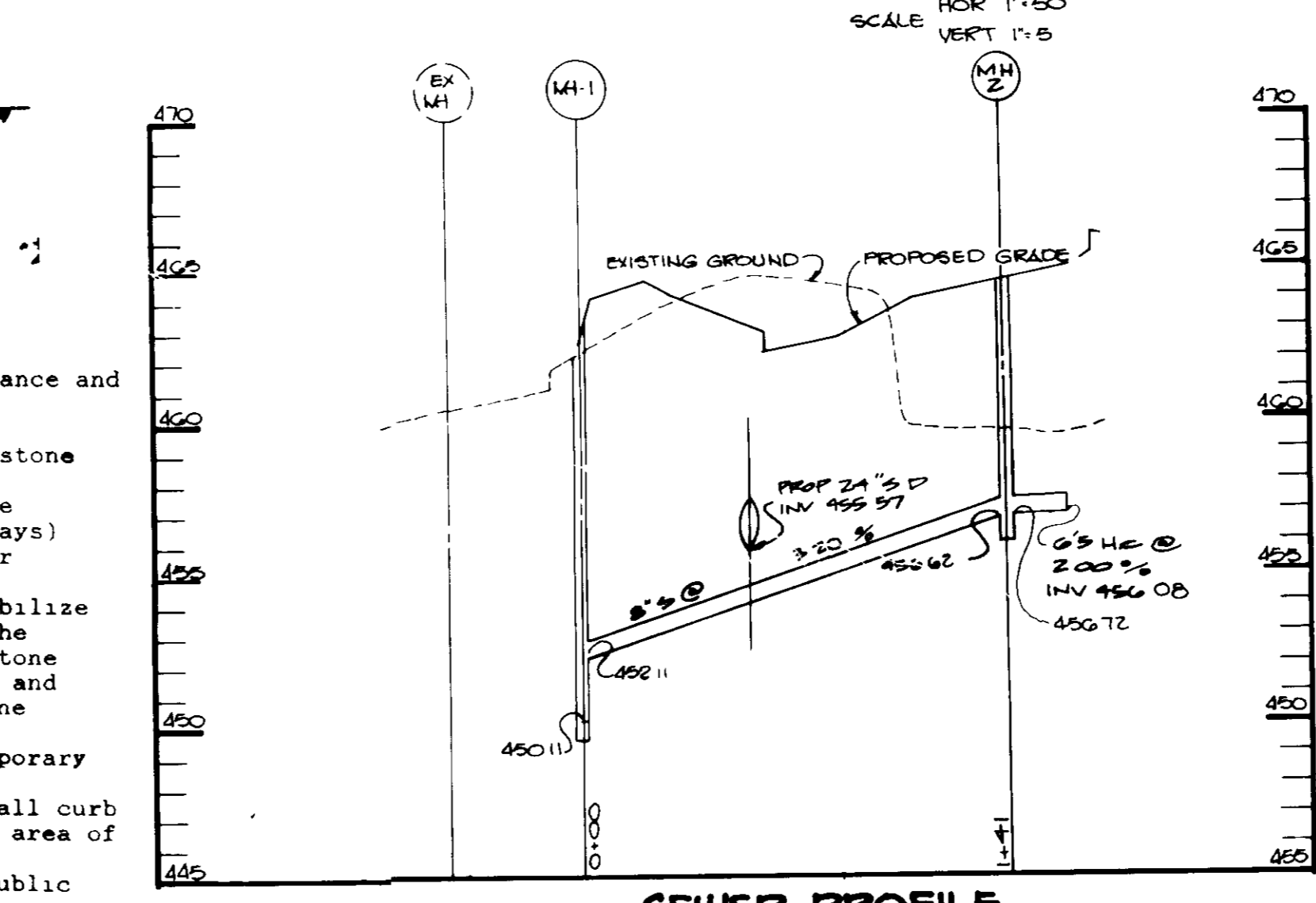
SEEDING
For periods March 1 thru April 30, and from August 15 thru November 15, seed with 140 lbs. per acre of annual type (3:2) 10/1000 mix.



SEDIMENT CONTROL NOTES
1. A minimum of 24 hours notice must be given to the Howard County Office of Inspections and Permits prior to the start of any construction (992-2437).



SEQUENCE OF CONSTRUCTION
1. Obtain a grading permit
2. Install stabilized construction entrance and block southernmost entrance from construction traffic (1 day)



BY THE DEVELOPER
I/WE CERTIFY THAT ALL DEVELOPMENT AND CONSTRUCTION WILL BE DONE ACCORDING TO THIS PLAN, AND THAT ANY RESPONSIBLE PERSONNEL INVOLVED IN THE CONSTRUCTION PROJECT WILL HAVE A CERTIFICATE OF ATTENDANCE AT A DEPARTMENT OF NATURAL RESOURCES APPROVED TRAINING PROGRAM FOR THE CONTROL OF SEDIMENT AND EROSION BEFORE BEGINNING THE PROJECT.

BY THE ENGINEER
I CERTIFY THAT THIS PLAN FOR EROSION AND SEDIMENT CONTROL REPRESENTS A PRACTICAL AND WORKABLE PLAN BASED ON MY PERSONAL KNOWLEDGE OF THE SITE CONDITIONS AND THAT IT WAS PREPARED IN ACCORDANCE WITH THE REQUIREMENTS OF THE HOWARD SOIL CONSERVATION DISTRICT.

REVIEWED FOR HOWARD COUNTY
AND MEETS TECHNICAL REQUIREMENTS
U.S. SOIL CONSERVATION SERVICE

THIS DEVELOPMENT PLAN IS APPROVED FOR SOIL EROSION AND SEDIMENT CONTROL BY THE HOWARD SOIL CONSERVATION DISTRICT.

APPROVED FOR PUBLIC WATER AND PUBLIC SEWERAGE SYSTEMS, HOWARD COUNTY HEALTH DEPARTMENT

APPROVED: HOWARD COUNTY OFFICE OF PLANNING AND ZONING

APPROVED FOR PUBLIC WATER, PUBLIC SEWERAGE, STORM DRAINAGE SYSTEMS AND PUBLIC ROADS.

HOWARD COUNTY DEPARTMENT OF PUBLIC WORKS

DATE NO REVISION

OWNER/DEVELOPER
JEROME W. WILLIAMS
6660 DOBBS ROAD
COLUMBIA, MARYLAND
21045

PROJECT
COLUMBIA 100 BUSINESS CENTER

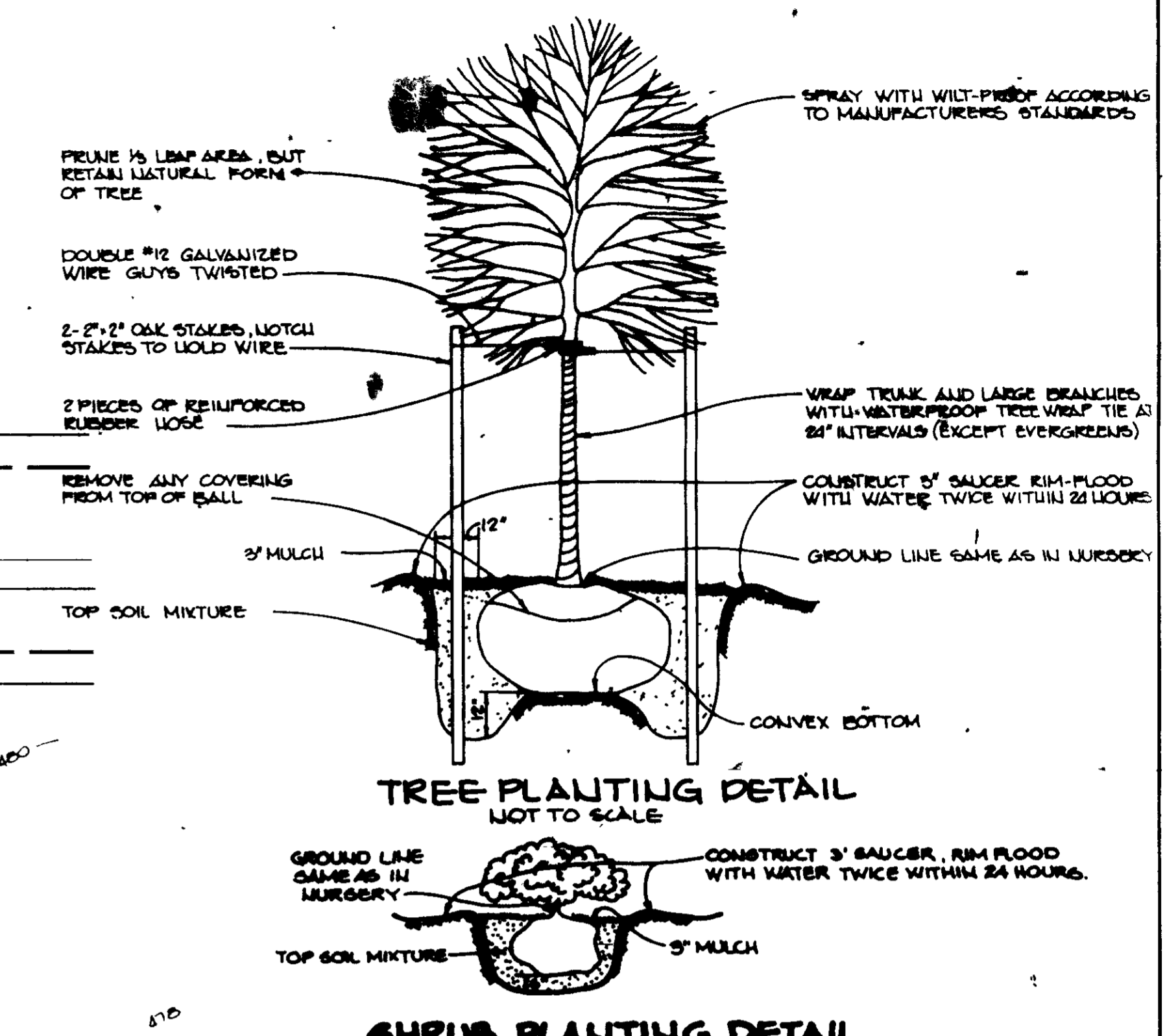
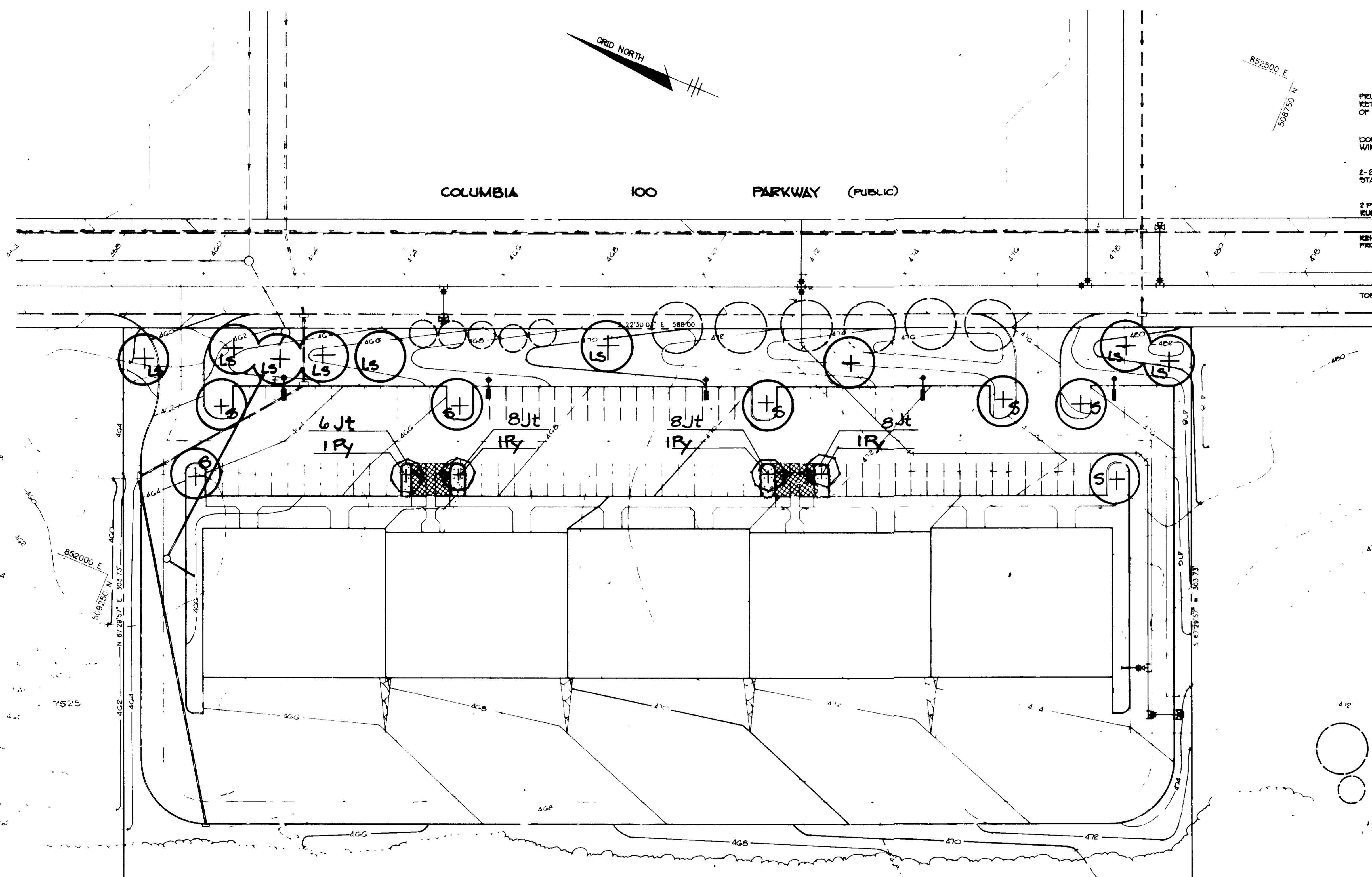
AREA TAX MAP 80 PARCEL G-1 PLAT NO 7747

TITLE
PROFILES AND DETAILS

THE RIEMER GROUP, INC.
The Riemer Group, Inc. A Land Planning, Design & Civil Engineering Firm
3105 North Ridge Road, Ellicott City, Maryland 21043 (301) 461-2690

APPROVED PLANNING BOARD OF HOWARD COUNTY
DATE 4-27-88

DESIGNED BY W C W
DRAWN BY M A D
PROJECT NO 44703
DATE 6-9-88
SCALE AS SHOWN
DRAWING NO 4 OF 5



STREET TREES PLANTED AS PER F-87-82

APPROVED: FOR PUBLIC WATER AND PUBLIC SEWERAGE SYSTEMS, HOWARD COUNTY HEALTH DEPARTMENT
James M. Boyd M.D. 7/26/88
 COUNTY HEALTH OFFICER DATE

APPROVED: HOWARD COUNTY OFFICE OF PLANNING AND ZONING
[Signature] 8/1/88
 PLANNING DIRECTOR DATE

APPROVED: FOR PUBLIC WATER, PUBLIC SEWERAGE, STORM DRAINAGE SYSTEMS AND PUBLIC ROADS.
 HOWARD COUNTY DEPARTMENT OF PUBLIC WORKS
James M. [Signature] 7/21/88
 DIRECTOR DATE

[Signature] 7-21-88
 CHIEF, BUREAU OF ENGINEERING DATE

DATE	NO	REVISION

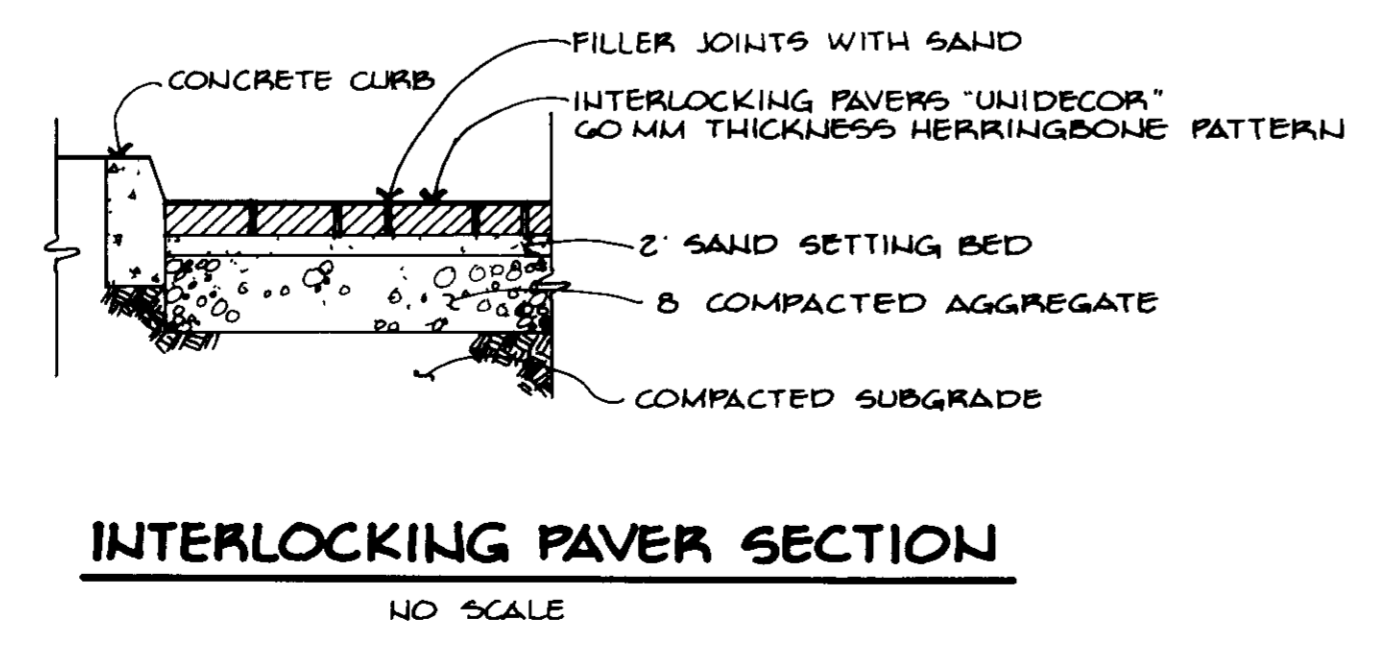
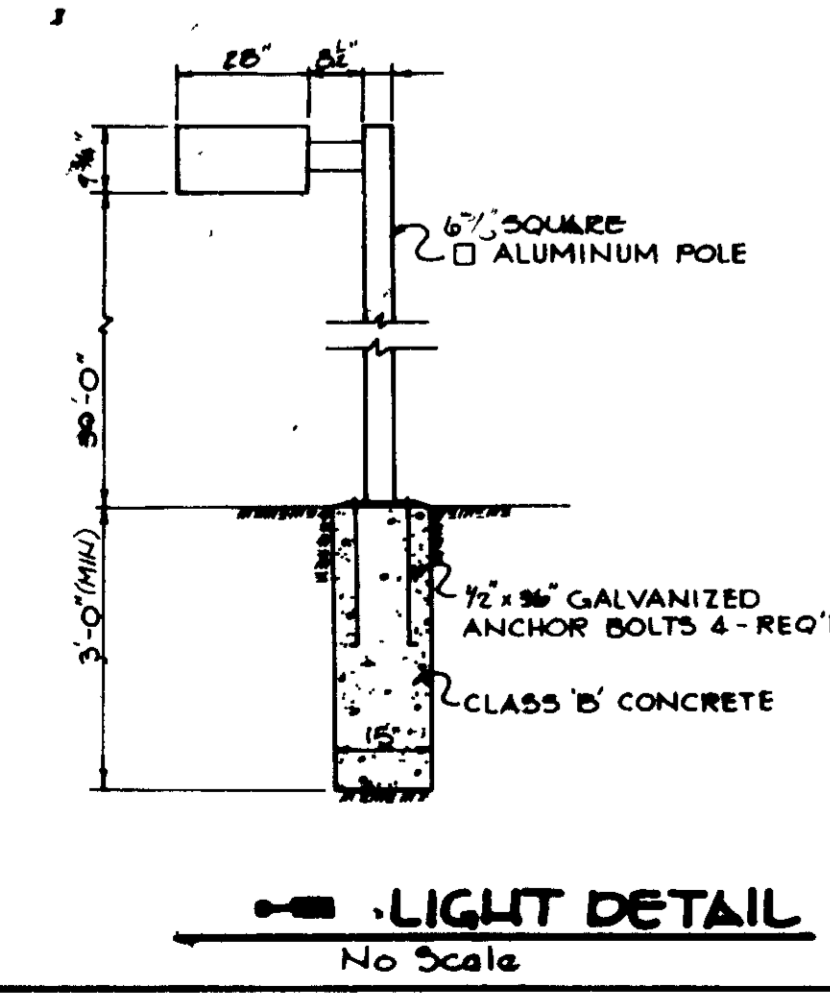
OWNER/DEVELOPER
 JEROME W. WILLIAMS
 6660 DOBEN ROAD
 COLUMBIA, MARYLAND
 21046

PROJECT
COLUMBIA 100 BUSINESS CENTER

AREA TAX MAP 30 PARCEL G-1 PLAT NO 7747
 COLUMBIA 100 - OFFICE RESEARCH PARK SECTION 1, AREA E
 2ND ELECTION DISTRICT, HOWARD COUNTY, MARYLAND

TITLE
PLANTING PLAN

- NOTES
- 1 ALL LIGHT FIXTURES TO BE SINGLE LUMINAIRE 400 WATT MERCURY TYPE 20" HIGH WITH METAL POLES AND DIRECTED DOWNWARD
 - 2 LOCATIONS OF LIGHT FIXTURES ARE ON THE PLAN AND ARE SHOWN TRUSS
 - 3 LIGHTS TO BE MODULE II TYPE JS MANUFACTURED BY MOLDCAST OR APPROVED EQUAL
 - 4 POLE AND FIXTURE TO HAVE BLACK POLYESTER ENAMEL FINISH
 - 5 POLE TO BE LOCATED 5' BACK FROM BACK OF CURB



Qty	Symbol	Name	Size	Remarks
9	6	INTERLOCKING PAVERS UNIDECOR	24\"/>	
7	5	CONCRETE CURB	24\"/>	
4	4	ANCHOR BOLTS 4\"/>		
30	3	CLASS B CONCRETE	18\"/>	

APPROVED
 PLANNING BOARD
 OF HOWARD COUNTY
 4-27-88

THE RIEMER GROUP, INC.
 The Riemer Group, Inc. A Land Planning, Design & Civil Engineering Firm
 3105 North Ridge Road, Ellicott City, Maryland 21043 (301) 461-2690

DESIGNED BY R.L.H.
 PROJECT NO 44703
 DATE 6-9-88
 SCALE 1\"/>