

SHEET INDEX
DESCRIPTION

1	TITLE SHEET
2	SITE DEVELOPMENT PLAN
3	SITE DEVELOPMENT PLAN
4	DRAINAGE AREA, GRADING AND SEDIMENT CONTROL PLAN
5	DRAINAGE AREA, GRADING AND SEDIMENT CONTROL PLAN
6	PROFILES AND DETAILS
7	STORM WATER MANAGEMENT AND SEDIMENT CONTROL NOTES AND DETAILS
8	PLANTING PLAN
9	PLANTING PLAN

SITE DEVELOPMENT PLAN

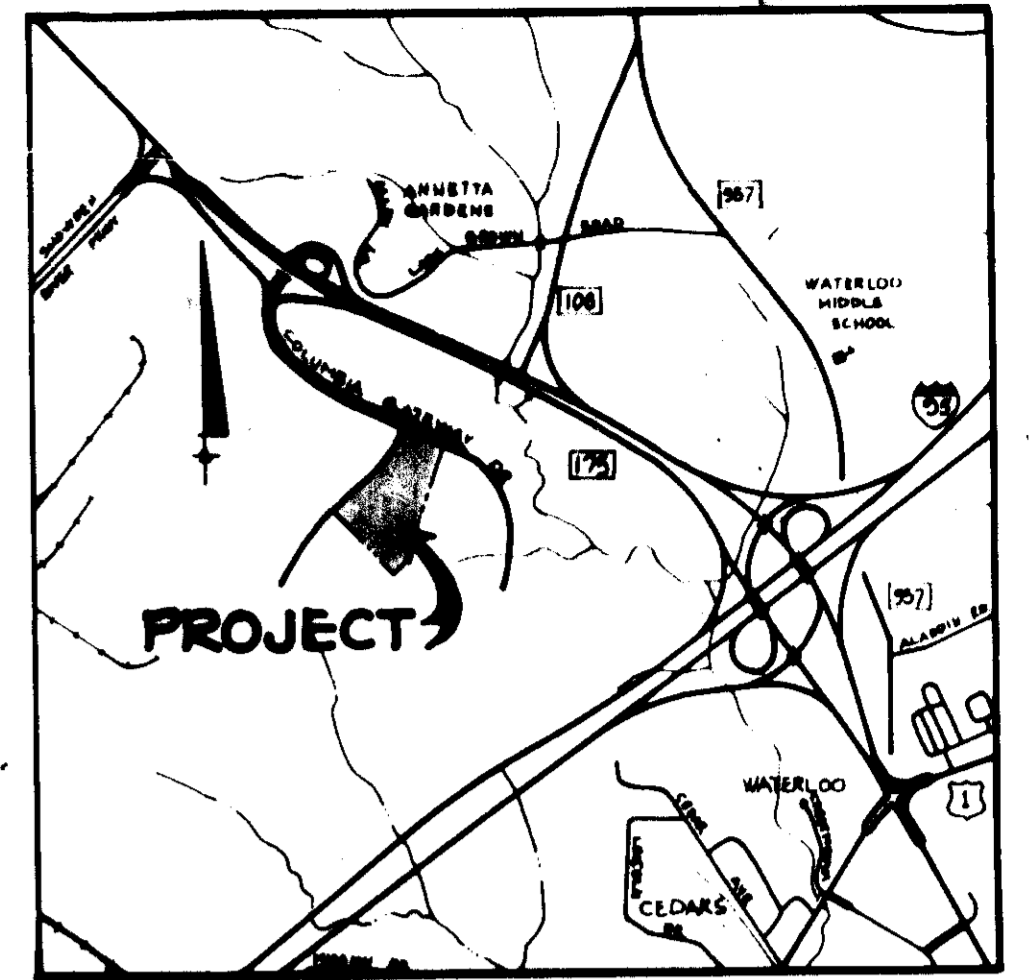
FOX RUN

COLUMBIA GATEWAY

PARCEL F

6TH ELECTION DISTRICT

HOWARD COUNTY, MARYLAND

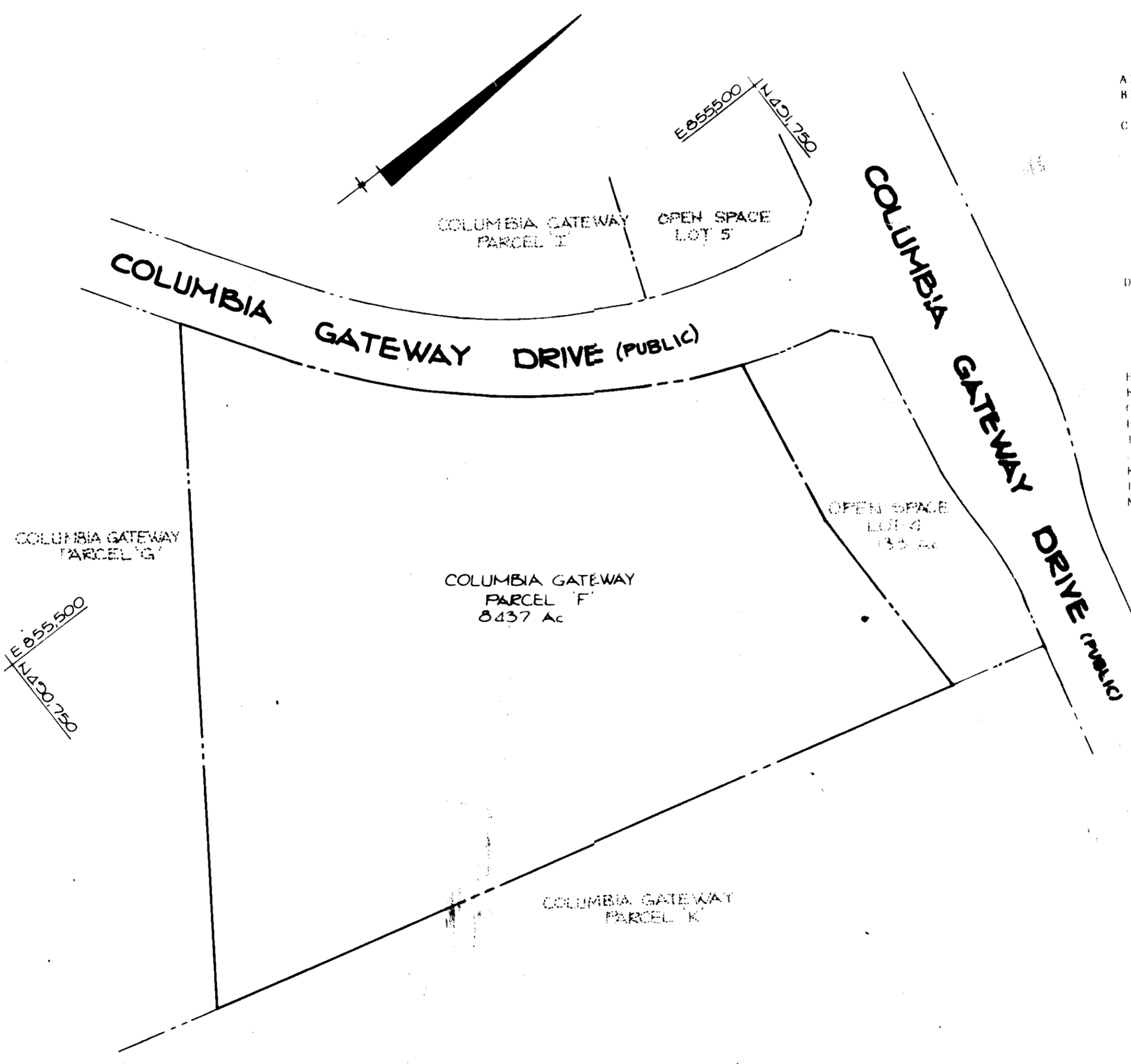
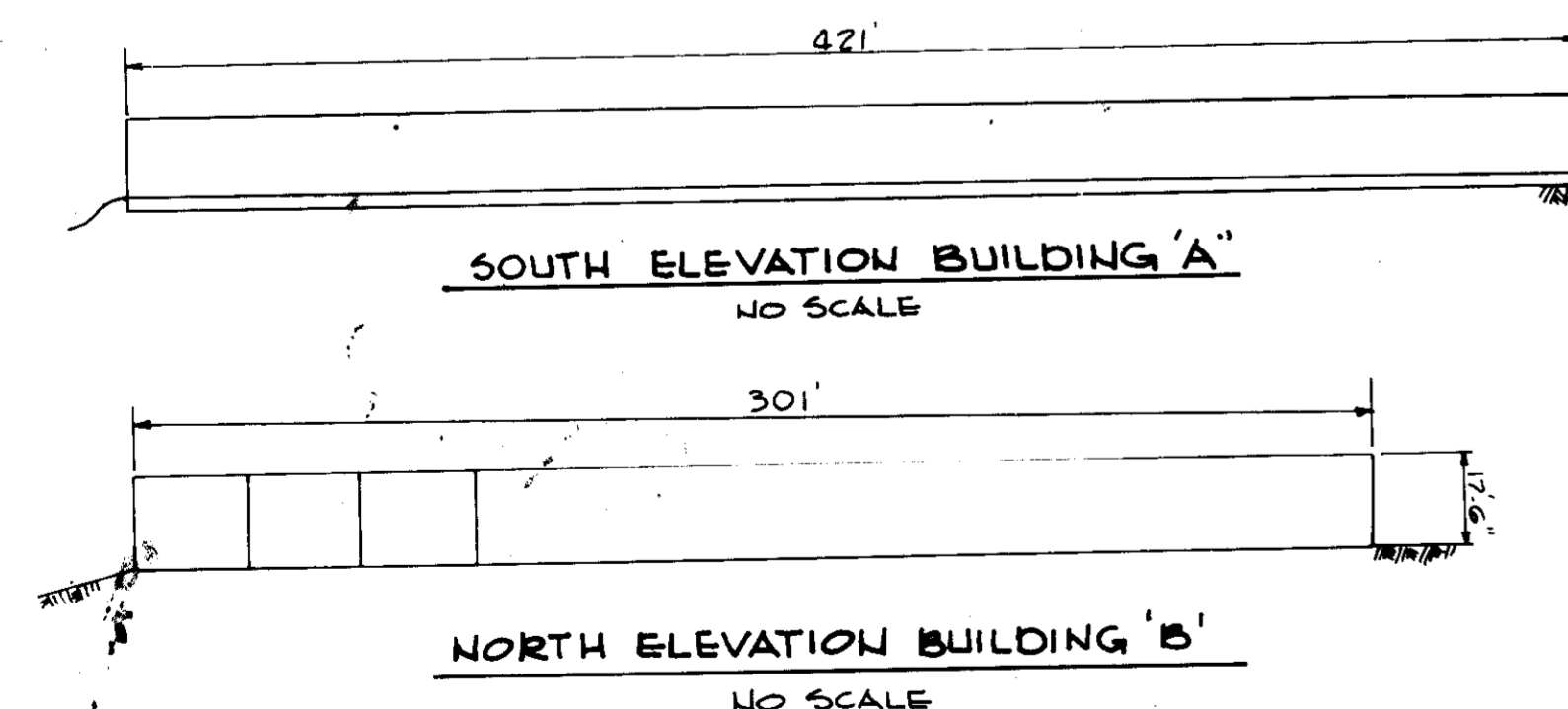


VICINITY MAP
SCALE 1" = 2000'

GENERAL NOTES

- ALL WATER LINES SHALL BE CONSTRUCTED A MINIMUM OF 42" COVER BELOW FINISHED GRADE.
- CORRUGATED STEEL PIPE SECTIONS WILL BE JOINED WITH A SINGLE OR TWO PIECE CORRUGATED BAND WITH A WATERTIGHT NEOPRENE GASKET. DIMPLE BAND CONNECTORS WILL NOT BE PERMITTED.
- ALL WORK SHALL BE PERFORMED IN ACCORDANCE WITH THE HOWARD COUNTY DESIGN MANUAL, VOL. IV, I.E., STANDARD SPECIFICATIONS AND DETAILS FOR CONSTRUCTION.
- APPROXIMATE LOCATION OF EXISTING UTILITIES ARE SHOWN. THE CONTRACTOR SHALL TAKE ALL NECESSARY PRECAUTIONS TO PROTECT THE EXISTING UTILITIES AND MAINTAIN UNINTERRUPTED SERVICE. ANY DAMAGE INCURRED DUE TO CONTRACTOR'S OPERATION SHALL BE REPAIRED IMMEDIATELY AT THE CONTRACTOR'S EXPENSE.
- THE CONTRACTOR SHALL TEST PIT EXISTING UTILITIES AT LEAST FIVE (5) DAYS BEFORE STARTING WORK SHOWN ON THESE DRAWINGS TO VERIFY THEIR LOCATION AND ELEVATION. THE CONTRACTOR SHALL NOTIFY THE ENGINEER IMMEDIATELY IF LOCATION OF UTILITIES IS OTHER THAN SHOWN.
- CONTRACTOR SHALL NOTIFY THE FOLLOWING UTILITIES AT LEAST FIVE (5) DAYS BEFORE STARTING WORK ON THESE DRAWINGS:

MISS UTILITY	1-559-0100
C&P TELEPHONE COMPANY	1-800-257-7777
HOWARD COUNTY BUREAU OF UTILITIES	792-2365
AT&T CABLE LOCATION DIVISION	393-3553
BALTIMORE GAS AND ELECTRIC COMPANY	685-0123
STATE HIGHWAY ADMINISTRATION	531-5533
HOWARD COUNTY CONSTRUCTION/INSPECTION SURVEY DIVISION (24 HOURS NOTICE PRIOR TO COMMENCEMENT OF WORK)	792-7272
- ALL INLETS SHALL BE CONSTRUCTED IN ACCORDANCE WITH HOWARD COUNTY STANDARDS.
- ALL PIPE ELEVATIONS SHOWN ARE INVERT ELEVATIONS.
- THE CONTRACTOR SHALL PROVIDE A JOINT IN ALL SEWER MAINS WITHIN 2'-0" OF EXTERIOR MANHOLE WALLS.
- PROFILE STATIONS SHALL BE ADJUSTED AS NECESSARY TO CONFORM TO PLAN DIMENSIONS.
- NO PIPE SHALL BE LAID UNTIL LINES OF EXCAVATION HAVE BEEN BROUGHT TO SUBGRADE.
- EXISTING CONTOURS ARE BASED ON THE GRADING PLAN PROPOSED BY H.R.D. FOR COLUMBIA GATEWAY DATED MARCH, 1986.
- ALL PLAN DIMENSIONS ARE TO FACE OF CURB UNLESS OTHERWISE NOTED.
- ALL STORM DRAIN PIPE BEDDING SHALL BE AS SHOWN IN DETAIL G2.01 (TRENCH IN ROCK OR TRENCH IN EARTH AS DETERMINED BY FIELD CONDITIONS) IN VOL. IV OF HOWARD COUNTY DESIGN MANUAL UNLESS OTHERWISE DIRECTED BY THE ENGINEER OR AS SHOWN ON THE DRAWINGS.
- THE DEVELOPER IS RESPONSIBLE FOR THE ACQUISITION OF ALL EASEMENTS, RIGHTS AND/OR RIGHTS-OF-WAY THAT MAY BE REQUIRED FOR THE SEDIMENT AND EROSION CONTROL PRACTICES, STORM WATER MANAGEMENT PRACTICES AND THE DISCHARGE OF STORM WATER ONTO OR ACROSS ADJACENT OR DOWNSTREAM PROPERTIES INCLUDED IN THIS PLAN. HE IS ALSO RESPONSIBLE FOR THE ACQUISITION OF ALL EASEMENTS, RIGHTS AND/OR RIGHTS-OF-WAY THAT MAY BE REQUIRED FOR GRADING AND/OR WORK ON ADJACENT PROPERTIES INCLUDED IN THIS PLAN.
- The owner shall provide a separate and independent sewer connection for each tenant or occupant of any building shown on the Site Development Plan, who will discharge non-domestic waste to the public sewerage system if this waste is regulated under Section 18.122A of the Howard County Code. Each separate and independent sewer connection shall include a standard manhole and other waste pretreatment devices as required and approved by Howard County. Waste lines on the interior of the building shall be designed, constructed or modified such that non-domestic waste will be discharged to the separate and independent sewer connection. No tenant or occupant of any building shown on this Site Development Plan shall discharge regulated non-domestic waste to the public sewerage system prior to installation of the separate and independent sewer connection and related interior waste lines. The above requirements shall apply to all initial and future occupants or tenants.



PLAN
SCALE 1" = 100'

SITE ANALYSIS

A) AREA OF PARCEL	8.44 Ac. (167,646 Sq. Ft.)
B) PRESENT ZONING	M-1
PROPOSED USE	OFFICE AND WAREHOUSE
C) FLOOR SPACE	
BUILDING A (ONE STORY)	58,461 SQ. FT.
OFFICE	38,000 SQ. FT. (652)
WAREHOUSE	20,461 SQ. FT. (352)
BUILDING B (ONE STORY)	31,545 SQ. FT.
OFFICE	20,504 SQ. FT. (652)
WAREHOUSE	11,041 SQ. FT. (352)
TOTAL OFFICE FLOORSPACE	58,504 SQ. FT.
TOTAL WAREHOUSE FLOORSPACE	31,502 SQ. FT.
TOTAL FLOORSPACE	90,006 SQ. FT.
D) PARKING REQUIRED	
1) 194 OFFICE EMPLOYEES	136 SPACES
= 7 SPACES PER 10 EMPLOYEES	
2) 31,502 SQ. FT. WAREHOUSE	63 SPACES
= 2 SPACES/1000 SQ. FT.	
TOTAL PARKING REQUIRED	199 SPACES
E) TOTAL PARKING PROVIDED	208 SPACES
F) HANDICAPPED SPACES REQUIRED	7 SPACES
G) HANDICAPPED SPACES PROVIDED	7 SPACES
H) OPEN SPACE REQUIRED	73,229 SQ. FT. (202)
I) OPEN SPACE PROVIDED	148,186 SQ. FT. (393)
J) AREA OF PARKING	76,744 SQ. FT.
K) LANDSCAPED ISLANDS REQUIRED	138 SQ. FT. (52)
L) LANDSCAPED ISLANDS PROVIDED	877 SQ. FT. (222)
M) BUILDING COVERAGE	1,006 SQ. FT. (25)

APPROVED: FOR PUBLIC WATER AND PUBLIC SEWERAGE SYSTEMS,
HOWARD COUNTY HEALTH DEPARTMENT.

[Signature] 2/11/87
COUNTY HEALTH OFFICER DATE

APPROVED: HOWARD COUNTY OFFICE OF PLANNING AND ZONING.

[Signature] 2-10-87
PLANNING DIRECTOR DATE

[Signature] 2-10-87
CHIEF, DIVISION OF LAND DEVELOPMENT AND ZONING ADMINISTRATION DATE

APPROVED: FOR PUBLIC WATER, PUBLIC SEWERAGE, STORM DRAINAGE SYSTEMS

HOWARD COUNTY DEPARTMENT OF PUBLIC WORKS

[Signature] 2-9-87
DIRECTOR DATE

[Signature] 2-2-87
CHIEF, BUREAU OF ENGINEERING DATE

DATE	NO.	REVISION
OWNER/DEVELOPER		
FOX RUN HOLDING ASSOCIATES LIMITED PARTNERSHIP		
5950 SYMPHONY WOODS OFFICE CENTER		
SUITE 300		
COLUMBIA, MARYLAND 21044		
PHONE: (301) 740-0200		
PROJECT		
FOX RUN		
AREA TAX MAP NO. 43		
COLUMBIA GATEWAY PLAT NO. 6771		
6TH ELECTION DISTRICT		
HOWARD COUNTY, MARYLAND		
TITLE		
TITLE SHEET		

ADDRESS CHART	
BUILDING	STREET ADDRESS
A	7175 COLUMBIA GATEWAY DRIVE
B	7180 COLUMBIA GATEWAY DRIVE

APPROVED

DIVISION OF LAND DEVELOPMENT & ZONING ADMINISTRATION

HOWARD COUNTY, MARYLAND

DATE 12-5-86

[Signature]

SUBDIVISION NAME	COLUMBIA GATEWAY	SECT./AREA	PARCEL # F
PLAT # OR E/F	6771	ZONE	M-1
BLOCK #	1	TAX/ZONE MAP	43
		ELEC. DIST.	6TH
		CENSUS TR	6065.02
WATER CODE	EOG	SEWER CODE	3300000

THE RIEMER GROUP, INC.

The Riemer Group, Inc. A Land Planning, Design & Civil Engineering Firm
3105 Health Park Drive, Ellicott City, Maryland 21043 (301) 481-8880

1-16-87
DATE

DESIGNED BY: JOP

DRAWN BY: FDM

PROJECT NO: 31002

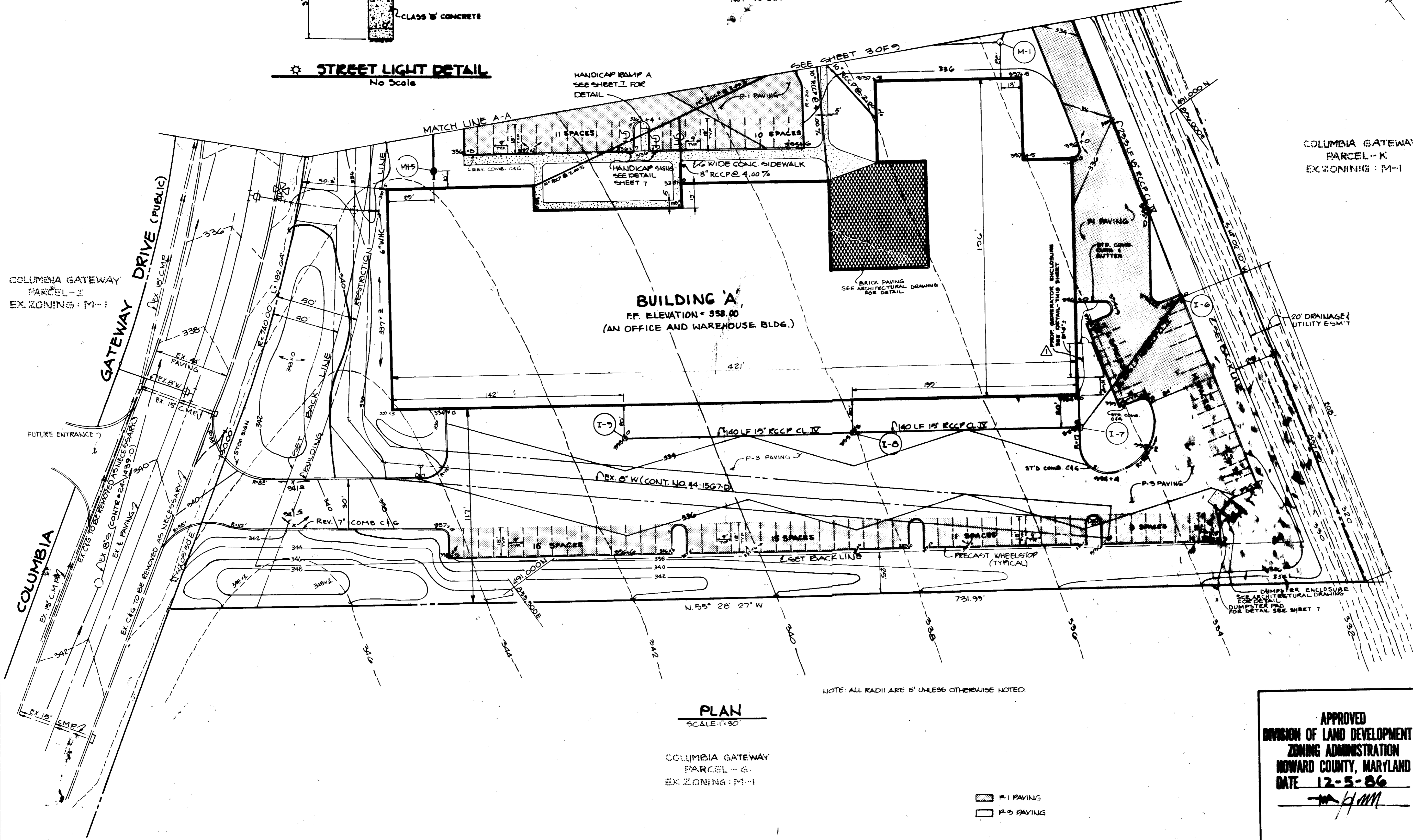
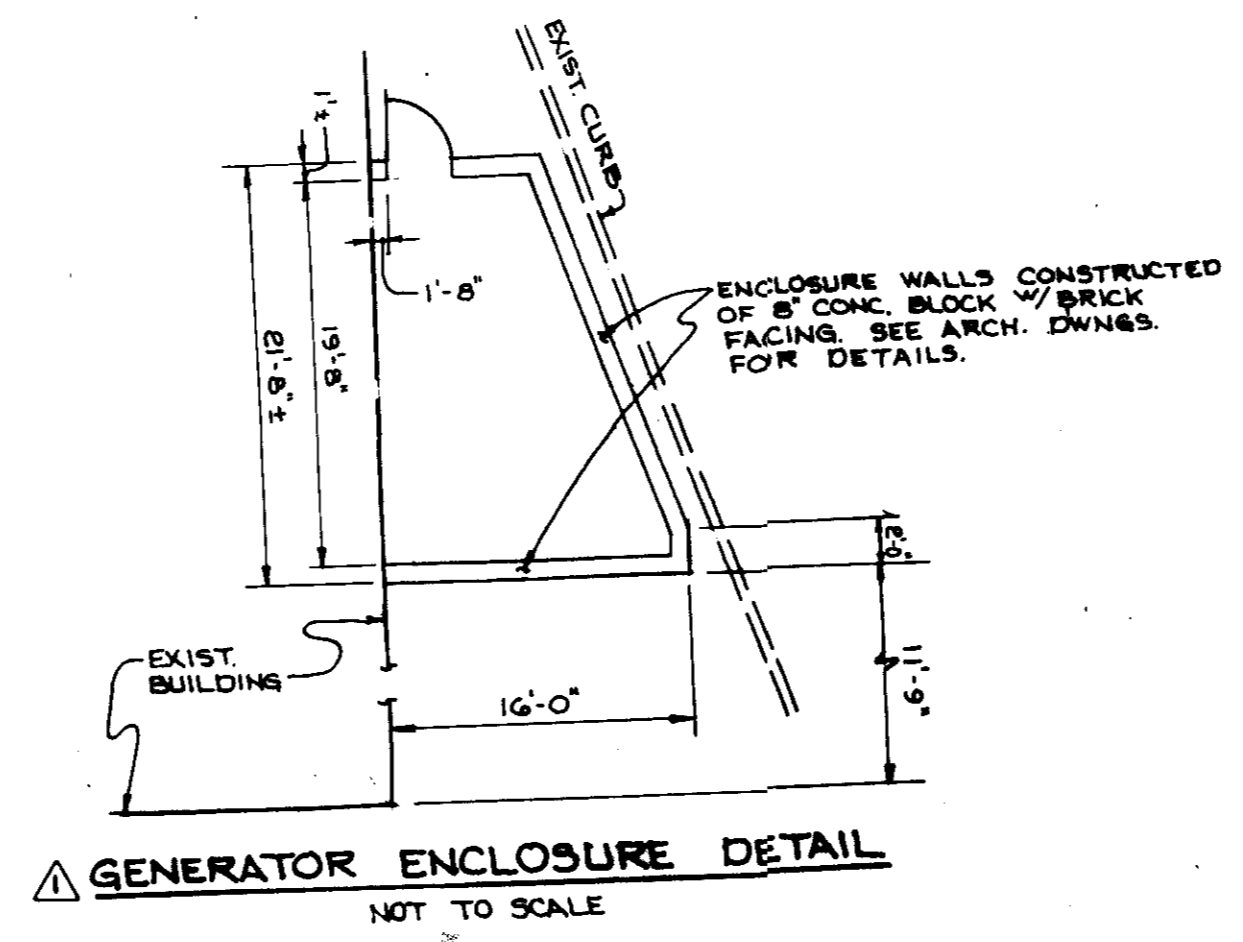
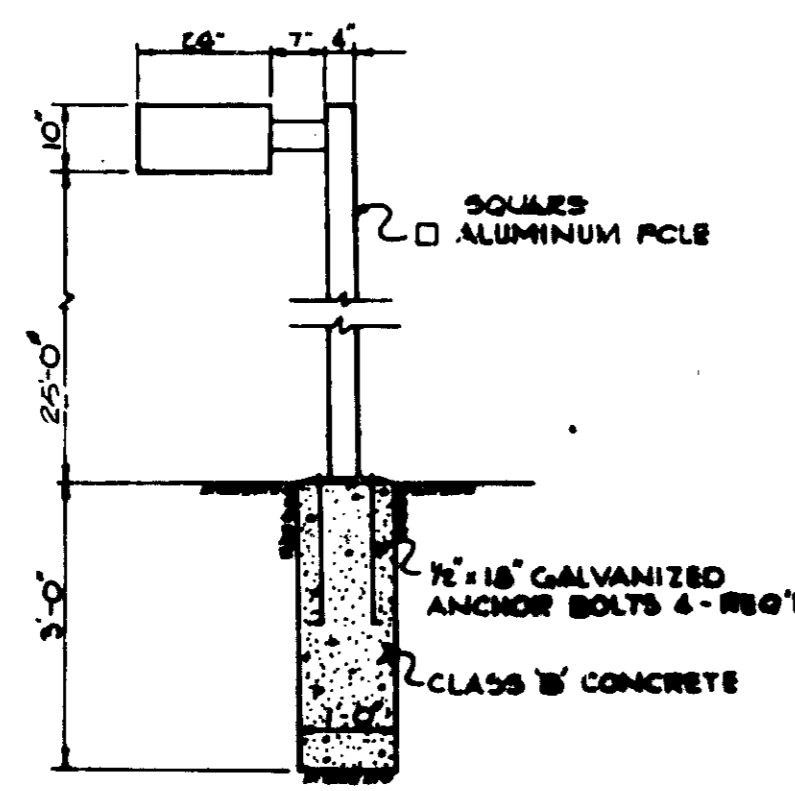
DATE: SEPT. 9, 1986

SCALE: AS SHOWN

DRAWING NO. 1 OF 2

[Professional Seal]
ARTHUR E. MUEGGEL, P.E.
REGISTERED PROFESSIONAL ENGINEER

- NOTES:
1. ALL LIGHT FIXTURES TO BE 4000 LUMENS 800 WATT MERCURY TYPE 18" HIGH WITH METAL POLES AND DIRECTED DOWNWARD.
 2. LOCATIONS OF LIGHT FIXTURES ARE ON THE PLAN AND ARE SHOWN THIS WAY.
 3. LIGHTS TO BE MODULE II TYPE AS MANUFACTURED BY MOLDCAST OR APPROVED EQUAL.
 4. POLE AND FIXTURE TO HAVE BRONZE POLYESTER FINISH.
 5. POLE TO BE LOCATED 5' BACK FROM BACK OF CURB.



PLAN
SCALE: 1"=30'

COLUMBIA GATEWAY
PARCEL - K
EX. ZONING: M-1

■ P-1 PAVING
□ P-3 PAVING

COLUMBIA GATEWAY
PARCEL - K
EX. ZONING: M-1

APPROVED: FOR PUBLIC WATER AND PUBLIC SEWERAGE SYSTEMS,
HOWARD COUNTY HEALTH DEPARTMENT.
[Signature] 2/10/87
COUNTY HEALTH OFFICER DATE

APPROVED: HOWARD COUNTY OFFICE OF PLANNING AND ZONING.
[Signature] 2-10-87
PLANNING DIRECTOR DATE
[Signature] 2-10-87
CHIEF, DIVISION OF LAND DEVELOPMENT AND ZONING ADMINISTRATION DATE

APPROVED: FOR PUBLIC WATER, PUBLIC SEWERAGE, STORM DRAINAGE SYSTEMS AND PUBLIC ROADS.
HOWARD COUNTY DEPARTMENT OF PUBLIC WORKS
[Signature] 2-9-87
DIRECTOR DATE
[Signature] 2-2-87
CHIEF, BUREAU OF ENGINEERING DATE

12/11/97 **REVISION**
DATE NO REVISION
1. ADDED PROP. GENERATOR ENCLOSURE @ SE CORNER BUILDING 'A'. ALSO ADDED DETAIL OF GEN. ENCLOSURE.

OWNER/DEVELOPER
FOX RUN HOLDING ASSOCIATES LIMITED PARTNERSHIP
5950 SYMPHONY WOODS OFFICE CENTER
SUITE 300
COLUMBIA, MARYLAND 21044
PHONE (301) 740-0200

PROJECT
FOX RUN

AREATAX MAP NO 43 PARCEL: F
COLUMBIA GATEWAY PLAT. NO. 6771
6TH ELECTION DISTRICT
HOWARD COUNTY MARYLAND

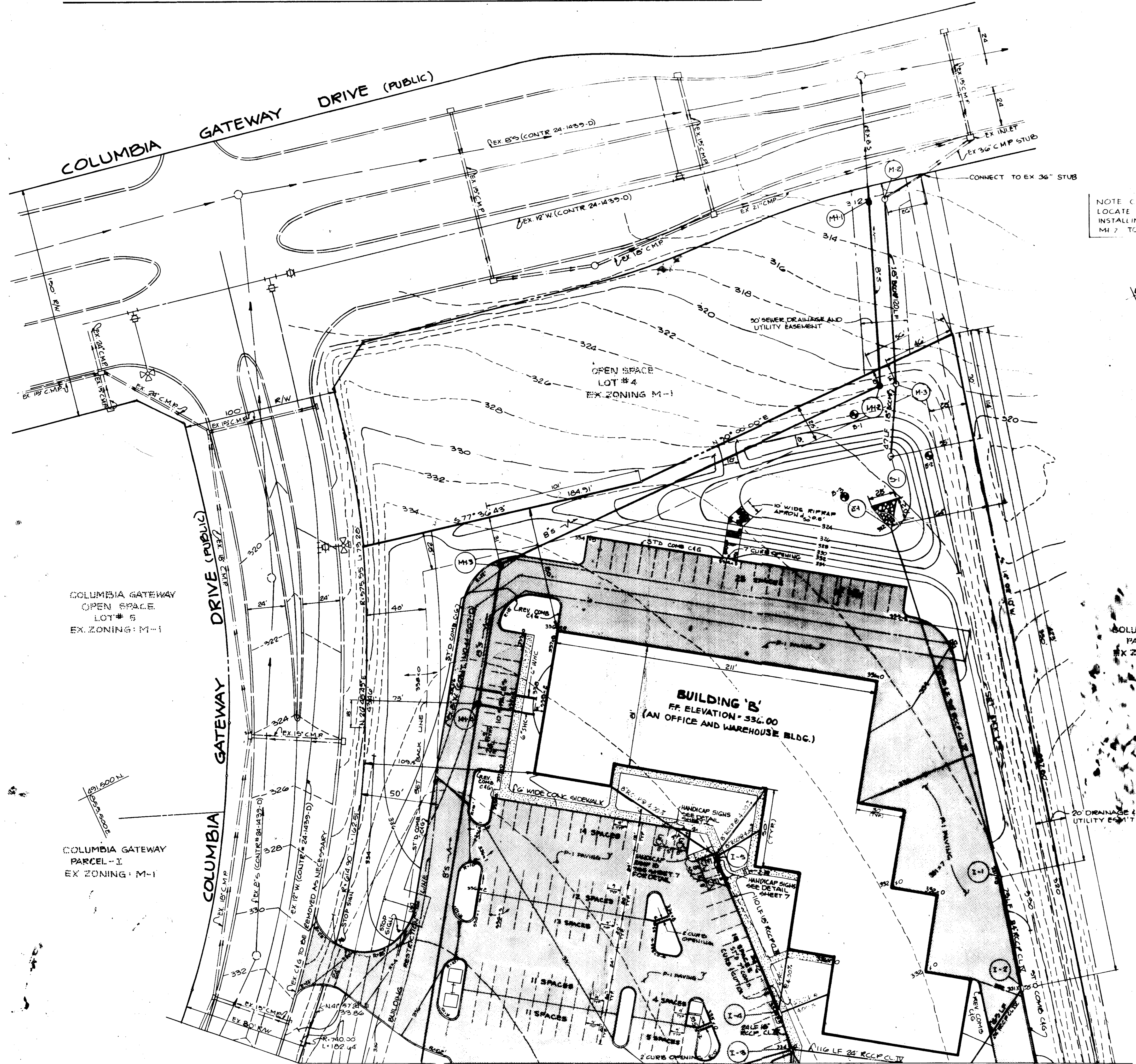
TITLE
SITE DEVELOPMENT PLAN

THE RIEMER GROUP, INC.
The Riemer Group, Inc. A Land Planning, Design & Civil Engineering Firm
3105 Health Park Drive, Ellicott City, Maryland 21043 (301) 461-2890

APPROVED
DIVISION OF LAND DEVELOPMENT &
ZONING ADMINISTRATION
HOWARD COUNTY, MARYLAND
DATE 12-5-86
[Signature]

1-16-87
DATE
DESIGNED BY: W.C.W.
DRAWN BY: M.A.D.
PROJECT NO: 31902
DATE: SEPTEMBER 9, 1986
SCALE: AS SHOWN
DRAWING NO. 2 OF 2

ARTHUR E. MUEGGEL 2707
SDP-87-13



NOTE CONTRACTOR TO FIELD LOCATE EXISTING B'S BEFORE INSTALLING M-1 AND B'S FROM M-7 TO THE EXISTING B'S STUB

APPROVED: FOR PUBLIC WATER AND PUBLIC SEWERAGE SYSTEMS, HOWARD COUNTY HEALTH DEPARTMENT.
 COUNTY HEALTH OFFICER: *[Signature]* DATE: 2-10-87

APPROVED: HOWARD COUNTY OFFICE OF PLANNING AND ZONING.
 PLANNING DIRECTOR: *[Signature]* DATE: 2-10-87
 CHIEF, DIVISION OF LAND DEVELOPMENT AND ZONING ADMINISTRATION: *[Signature]* DATE: 2-10-87

APPROVED: FOR PUBLIC WATER, PUBLIC SEWERAGE, STORM DRAINAGE SYSTEMS AND PUBLIC ROADS.
 HOWARD COUNTY DEPARTMENT OF PUBLIC WORKS
 DIRECTOR: *[Signature]* DATE: 2-9-87
 CHIEF, BUREAU OF ENGINEERING: *[Signature]* DATE: 2-2-87

DATE	NO	REVISION

OWNER/DEVELOPER
 FOX RUN HOLDING ASSOCIATES LIMITED PARTNERSHIP
 5950 SYMPHONY WOODS OFFICE CENTER
 SUITE 300
 COLUMBIA, MARYLAND 21044
 PHONE (301) 740-0200

PROJECT: FOX RUN

AREA TAX MAP NO. 43 PARCEL F
 COLUMBIA GATEWAY PLAT NO. 6771
 6th ELECTION DISTRICT
 HOWARD COUNTY, MARYLAND

TITLE: SITE DEVELOPMENT PLAN

APPROVED
 DIVISION OF LAND DEVELOPMENT & ZONING ADMINISTRATION
 HOWARD COUNTY, MARYLAND
 DATE: 12-5-86
[Signature]

THE RIEMER GROUP, INC.
 The Riemer Group, Inc. A Land Planning, Design & Civil Engineering Firm
 3105 Health Park Drive, Ellicott City, Maryland 21043 (301) 481-2690

DATE: 1-16-87

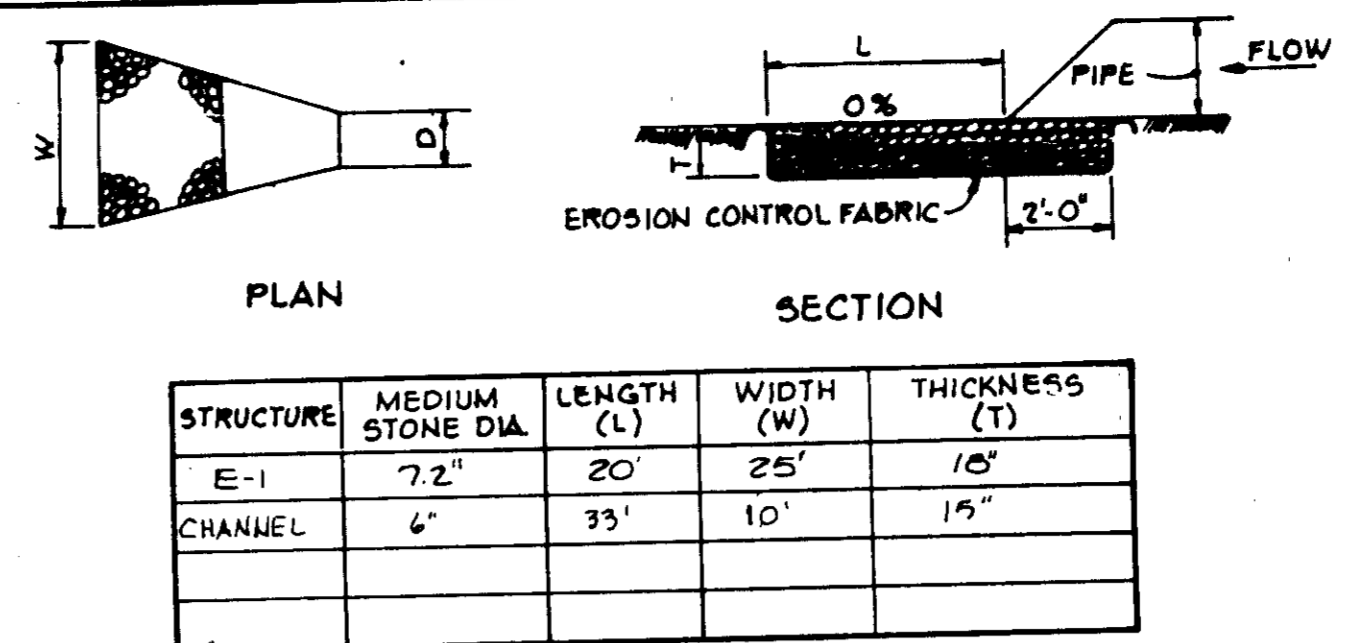
DESIGNED BY: W.C.W.
 DRAWN BY: M.A.D.
 PROJECT NO: 31976
 DATE: SEPTEMBER 9, 1986
 SCALE: 1" = 30'
 DRAWING NO: 3 OF 3

MATCHLINE 'A-A' SEE SHEET 2 OF 2

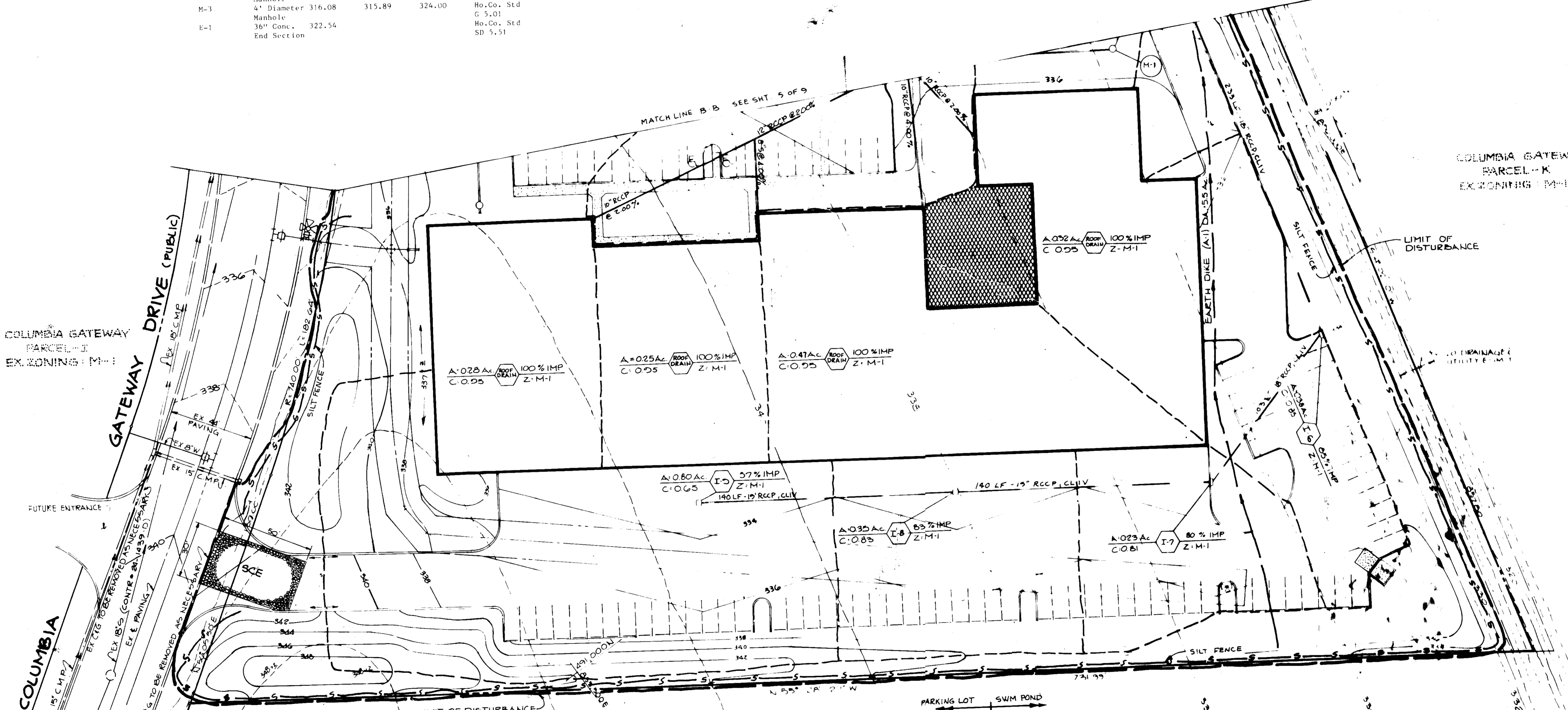
SDP-87-13

STRUCTURE SCHEDULE					
STRUCTURE	TYPE	INV. IN	INV. OUT	ELEV. Ground or Grate	REMARKS
I-1	A-5 INLET	324.73	323.73	331.0	Ho.Co. Std. SD 4.01
I-2	A-5 INLET	325.20 (25" (18"))	325.10	331.95	Ho.Co. Std SD 4.01
I-3	Double 'S' Combination	327.61	327.11	334.0	Ho.Co. Std SD 4.34
I-4	A-5 INLET	328.95	327.85	334.25	Ho.Co. Std SD 4.01
I-5	'S' Comb.		329.05	333.80	Ho.Co. Std SD 4.32
I-6	'S' Comb.	326.87	326.77	334.0	Ho.Co. Std SD 4.32
I-7	A-5 INLET	327.64	327.39	333.30	Ho.Co. Std SD 4.01
I-8	'S' INLET w/Particular Grate	328.44	328.34	333.30	Ho.Co. Std SD 4.22
I-9	'S' INLET w/Particular Grate		329.14	333.0	Ho.Co. Std SD 4.01
M-1	4' Diameter Manhole	325.95	325.85	335.0	Ho.Co. Std G 5.01
M-2	5' Diameter Manhole	303.27	302.27	312.20	Ho.Co. Std G 5.02
M-3	4' Diameter Manhole	316.08	315.89	324.00	Ho.Co. Std G 5.01
E-1	36" Conc. End Section	322.54			Ho.Co. Std SD 5.51

- SEQUENCE OF CONSTRUCTION
- OBTAIN GRADING PERMIT
 - INSTALL STABILIZED CONSTRUCTION ENTRANCE AND BLOCK THE NORTHERN ENTRANCE FOR CONSTRUCTION TRAFFIC. (1 DAY)
 - INSTALL SEWER MAIN FROM MH-2 TO MH-1. (2 DAYS)
 - INSTALL SILT FENCE, EARTH DIKE AND SEDIMENT BASIN. (4 DAYS)
 - GRADE SITE MAINTAINING POSITIVE DRAINAGE FOR THE EARTH DIKE. (10 DAYS)
 - INSTALL STORM DRAINS, WATER AND THE REMAINING SEWER. (15 DAYS)
 - STABILIZE IN ACCORDANCE WITH TEMPORARY SEEDING NOTES. (2 DAYS)
 - BEGIN BUILDING CONSTRUCTION AND INSTALL CURB AND GUTTER.
 - COMPLETE ALL CONSTRUCTION FOR THE NORTHERN ENTRANCE. (1/2 DAY)
 - REMOVE ENTRANCE BLOCKING FOR THE NORTHERN ENTRANCE. (1/2 DAY)
 - STABILIZE ALL DISTURBED AREAS IN ACCORDANCE WITH THE PERMANENT SEEDING NOTES. (1 DAY)
 - UPON APPROVAL OF THE DEPARTMENT OF PUBLIC WORKS SEDIMENT CONTROL INSPECTOR, REMOVE ALL SEDIMENT CONTROL DEVICES AND CONVERT SEDIMENT BASIN TO STORM WATER MANAGEMENT FACILITY AS FOLLOWS:
 - PUMP OUT IMPOUNDED WATER. (1/2 DAY)
 - REMOVE SEDIMENT AND PLACE AS DIRECTED BY THE DEPARTMENT OF PUBLIC WORKS SEDIMENT CONTROL INSPECTOR. (1/2 DAY)
 - REMOVE THE DEWATERING DEVICE. (1/2 DAY)
 - STABILIZE THE REMAINING DISTURBED AREA IN ACCORDANCE WITH PERMANENT SEEDING NOTES. (1/2 DAY)

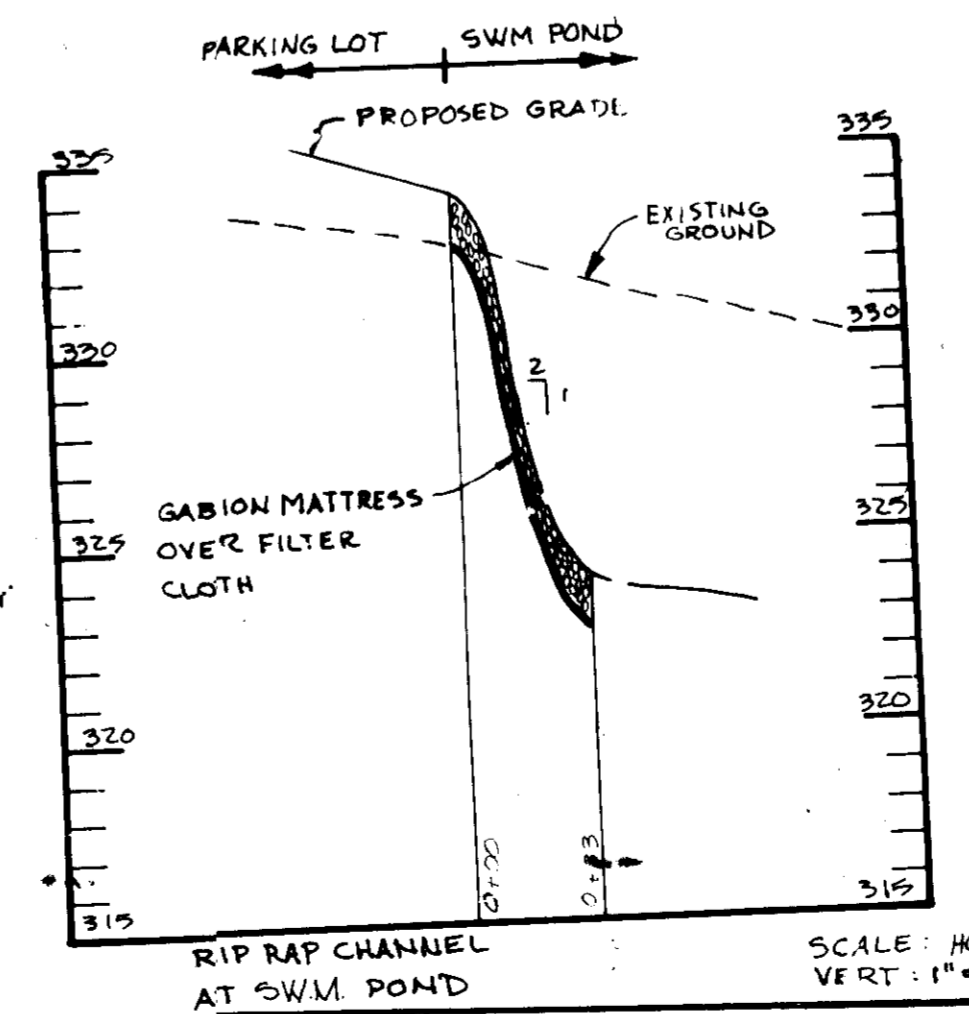


OUTLET PROTECTION DETAIL
No Scale



PLAN
SCALE: 1" = 30'

BORING LOGS NO SCALE		
B1	0 2.0 7.0 9.0 15.0	BROWN CLAYEY SILTY SAND WITH QUARTZ GRAVEL (SM) TAN BROWN SILTY SAND WITH QUARTZ GRAVEL AND PACKETS OF BROWN/TAN SILTY CLAY (SM) TAN SILTY CLAY WITH RED BROWN SANDY SILTY CLAY (CL)
B2	0 2.0 7.0 9.5 15.0	BROWN CLAYEY SILTY SAND (SM) TAN BROWN SILTY SAND WITH QUARTZ GRAVEL (SM) WHITE SILTY CLAY (CL) RED BROWN/TAN SILTY CLAY, TRACE OF SAND (CL)
B3	0 5.0 11.0 16.0 20.0	TAN BROWN SILTY SAND WITH QUARTZ GRAVEL (SM) BROWN SANDY SILTY CLAY WITH TRACE OF QUARTZ GRAVEL (SC) TAN SILTY CLAY WITH TRACE OF SAND (CL) GREEN SILTY CLAY WITH TRACE OF SAND (CL)



LEGEND
SILT FENCE
EARTH DIKE
LIMIT OF DISTURBANCE

APPROVED
DIVISION OF LAND DEVELOPMENT & ZONING ADMINISTRATION
HOWARD COUNTY, MARYLAND
DATE 12-5-86

BY THE DEVELOPER:
"I CERTIFY THAT ALL DEVELOPMENT AND/OR CONSTRUCTION WILL BE DONE ACCORDING TO THESE PLANS, AND THAT ANY RESPONSIBLE PERSONNEL INVOLVED IN THE CONSTRUCTION PROJECT WILL HAVE A CERTIFICATE OF ATTENDANCE AT A DEPARTMENT OF NATURAL RESOURCES APPROVED TRAINING PROGRAM FOR THE CONTROL OF SOIL EROSION AND SEDIMENT BEFORE BEGINNING THE PROJECT. I WILL PROVIDE THE HOWARD SOIL CONSERVATION DISTRICT WITH AN 'AS-BUILT' PLAN OF THE POND WITHIN 30 DAYS OF COMPLETION."
Lawrence Gildea
DEVELOPER
DATE 1/14/87

BY THE ENGINEER:
"I CERTIFY THAT THIS PLAN FOR POND CONSTRUCTION, EROSION AND SEDIMENT CONTROL REPRESENTS A PRACTICAL AND WORKABLE PLAN BASED ON MY PERSONAL KNOWLEDGE OF THE SITE CONDITIONS. THIS PLAN WAS PREPARED IN ACCORDANCE WITH THE REQUIREMENTS OF THE HOWARD SOIL CONSERVATION DISTRICT. I HAVE NOTIFIED THE DEVELOPER THAT HE MUST PROVIDE THE HOWARD SOIL CONSERVATION DISTRICT WITH AN 'AS-BUILT' PLAN OF THE POND WITHIN 30 DAYS OF COMPLETION."
Arthur E. Muegge
ENGINEER
ARTHUR E. MUEGGE #0707
DATE 1-16-87

THESE PLANS HAVE BEEN REVIEWED FOR THE HOWARD SOIL CONSERVATION DISTRICT AND MEET THE TECHNICAL REQUIREMENTS FOR SMALL POND CONSTRUCTION, SOIL EROSION AND SEDIMENT CONTROL.
James M. Miller
U.S. SOIL CONSERVATION SERVICE
DATE 1-27-87

THESE PLANS FOR SMALL POND CONSTRUCTION, SOIL EROSION AND SEDIMENT CONTROL MEET THE REQUIREMENTS OF THE HOWARD SOIL CONSERVATION DISTRICT.
Robert W. Ziehn
HOWARD S.C.D.
DATE 1-27-87

APPROVED: FOR PUBLIC WATER AND PUBLIC SEWERAGE SYSTEMS, HOWARD COUNTY HEALTH DEPARTMENT.
James E. Jones
COUNTY HEALTH OFFICER
DATE 2/10/87

APPROVED: HOWARD COUNTY OFFICE OF PLANNING AND ZONING.
Thomas H. King
PLANNING DIRECTOR
DATE 2-10-87

APPROVED: FOR PUBLIC WATER, PUBLIC SEWERAGE, STORM DRAINAGE SYSTEMS AND PUBLIC ROADS.
HOWARD COUNTY DEPARTMENT OF PUBLIC WORKS
John F. Nung
DIRECTOR
DATE 2-9-87

APPROVED: FOR PUBLIC WATER, PUBLIC SEWERAGE, STORM DRAINAGE SYSTEMS AND PUBLIC ROADS.
John F. Nung
CHIEF, BUREAU OF ENGINEERING
DATE 2-2-87

DATE	NO	REVISION

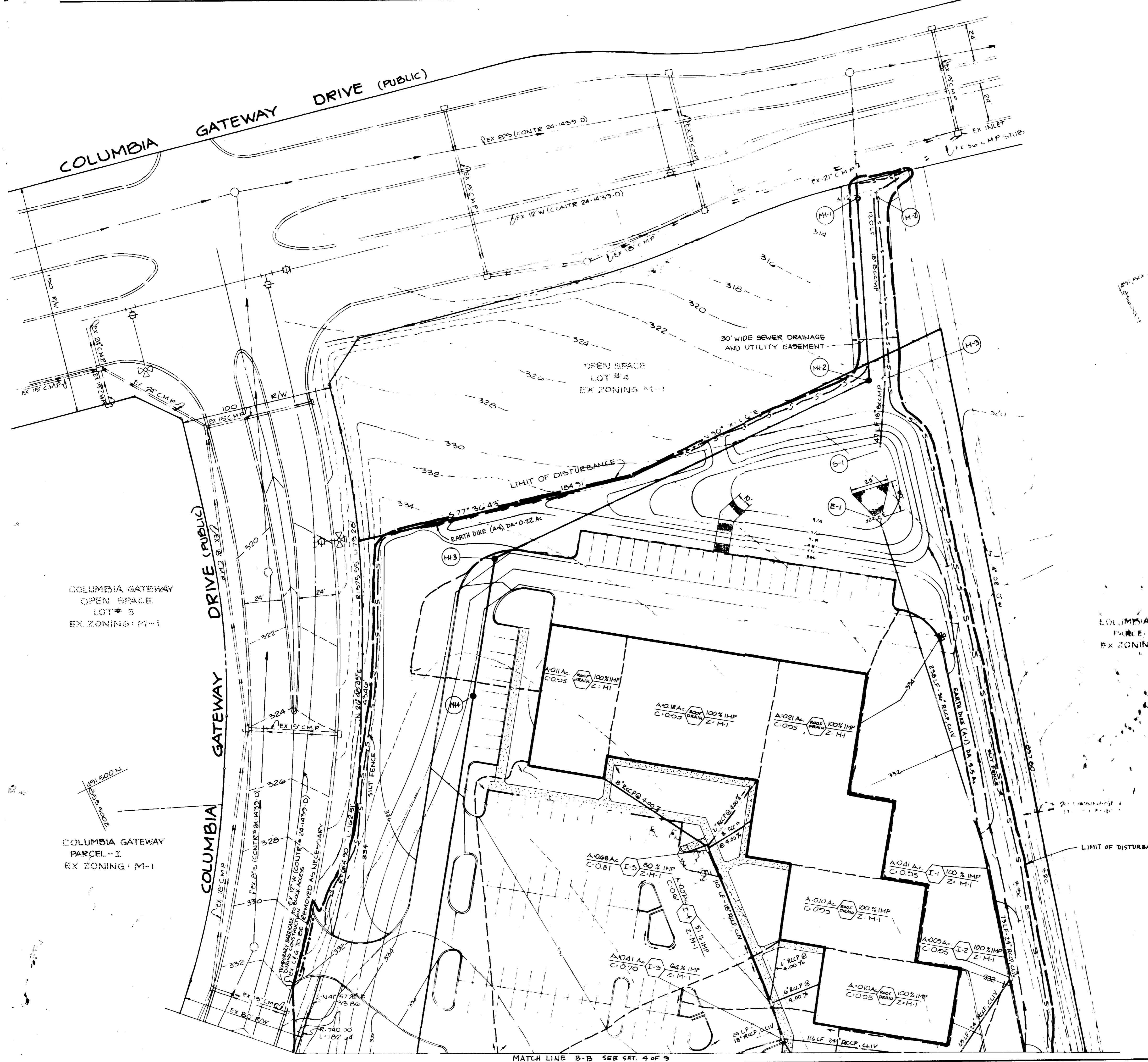
OWNER/DEVELOPER
FOX RUN HOLDING ASSOCIATES LIMITED PARTNERSHIP
5750 SYMPHONY WOODS OFFICE CENTER
SUITE 300
COLUMBIA, MARYLAND 21044
PHONE (301) 740-0200

PROJECT **FOX RUN**
AREA TAX MAP NO 43 PARCEL E
COLUMBIA GATEWAY PLAT NO 6771
4TH ELECTION DISTRICT
HOWARD COUNTY MARYLAND

TITLE **DRAINAGE AREA, GRADING AND SEDIMENT CONTROL PLAN**

THE RIEMER GROUP, INC.
The Riemer Group, Inc. A Land Planning, Design & Civil Engineering Firm
3106 Heath Park Drive, Ellicott City, Maryland 21043 (301) 461-2690
DATE 1/16/87
DESIGNED BY JOP
DRAWN BY FDM
PROJECT NO 31902
DATE SEPT 21/86
SCALE AS SHOWN
DRAWING NO 4 OF 2

SDP-87-13



BY THE DEVELOPER:

"I CERTIFY THAT ALL DEVELOPMENT AND/OR CONSTRUCTION WILL BE DONE ACCORDING TO THESE PLANS, AND THAT ANY RESPONSIBLE PERSONNEL INVOLVED IN THE CONSTRUCTION PROJECT WILL HAVE A CERTIFICATE OF ATTENDANCE AT A DEPARTMENT OF NATURAL RESOURCES APPROVED TRAINING PROGRAM FOR THE CONTROL OF SEDIMENT AND EROSION BEFORE BEGINNING THE PROJECT. I WILL PROVIDE THE HOWARD SOIL CONSERVATION DISTRICT WITH AN 'AS-BUILT' PLAN OF THE POND WITHIN 30 DAYS OF COMPLETION."

Laurence Gildea
 DEVELOPER
 LAURENCE GILDEA
 1/14/87
 DATE

BY THE ENGINEER:

"I CERTIFY THAT THIS PLAN FOR POND CONSTRUCTION, EROSION AND SEDIMENT CONTROL REPRESENTS A PRACTICAL AND WORKABLE PLAN BASED ON MY PERSONAL KNOWLEDGE OF THE SITE CONDITIONS. THIS PLAN WAS PREPARED IN ACCORDANCE WITH THE REQUIREMENTS OF THE HOWARD SOIL CONSERVATION DISTRICT. I HAVE NOTIFIED THE DEVELOPER THAT HE MUST PROVIDE THE HOWARD SOIL CONSERVATION DISTRICT WITH AN 'AS-BUILT' PLAN OF THE POND WITHIN 30 DAYS OF COMPLETION."

Arthur E. Muegge
 ENGINEER
 ARTHUR E. MUEGGE #8707
 1-16-87
 DATE

THESE PLANS HAVE BEEN REVIEWED FOR THE HOWARD SOIL CONSERVATION DISTRICT AND MEET THE TECHNICAL REQUIREMENTS FOR SMALL POND CONSTRUCTION, SOIL EROSION AND SEDIMENT CONTROL.

James H. Taha
 U.S. SOIL CONSERVATION SERVICE
 1-27-87
 DATE

THESE PLANS FOR SMALL POND CONSTRUCTION, SOIL EROSION AND SEDIMENT CONTROL MEET THE REQUIREMENTS OF THE HOWARD SOIL CONSERVATION DISTRICT.

APPROVED *Alfred Jahn*
 HOWARD S.C.D.
 1-27-87
 DATE

APPROVED: FOR PUBLIC WATER AND PUBLIC SEWERAGE SYSTEMS, HOWARD COUNTY HEALTH DEPARTMENT.

James H. Taha
 COUNTY HEALTH OFFICER
 2/10/87
 DATE

APPROVED: HOWARD COUNTY OFFICE OF PLANNING AND ZONING.

James H. Taha
 PLANNING DIRECTOR
 2-10-87
 DATE

John M. ...
 CHIEF, DIVISION OF LAND DEVELOPMENT AND ZONING ADMINISTRATION
 2-10-87
 DATE

APPROVED: FOR PUBLIC WATER, PUBLIC SEWERAGE, STORM DRAINAGE SYSTEMS AND PUBLIC ROADS.

HOWARD COUNTY DEPARTMENT OF PUBLIC WORKS

James H. Taha
 DIRECTOR
 2-9-87
 DATE

James H. Taha
 CHIEF, BUREAU OF ENGINEERING
 2-2-87
 DATE

DATE	NO	REVISION
OWNER/DEVELOPER FOX RUN HOLDING ASSOCIATES LIMITED PARTNERSHIP 5950 SYMPHONY WOODS OFFICE CENTER SUITE 300 COLUMBIA, MARYLAND 21044 PHONE (301)-740-0200		
PROJECT FOX RUN		
AREA TAX MAP NO 45 PARCEL F COLUMBIA GATEWAY PLAT NO. 6771 6TH ELECTION DISTRICT HOWARD COUNTY, MARYLAND		
TITLE DRAINAGE AREA, GRADING AND SEDIMENT CONTROL PLAN		

APPROVED
 DIVISION OF LAND DEVELOPMENT &
 ZONING ADMINISTRATION
 HOWARD COUNTY, MARYLAND
 DATE 12-5-86
Arthur E. Muegge

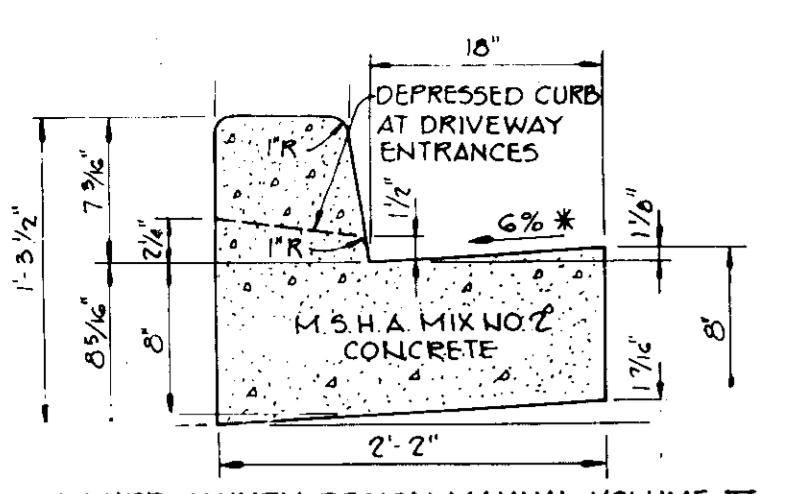
THE RIEMER GROUP, INC.
 The Riemer Group, Inc. A Land Planning, Design & Civil Engineering Firm
 3105 Heath Park Drive, Ellicott City, Maryland 21043 (301) 461-2690

1-16-87
 DATE

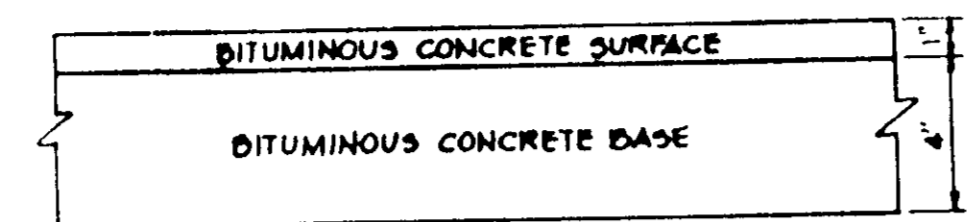
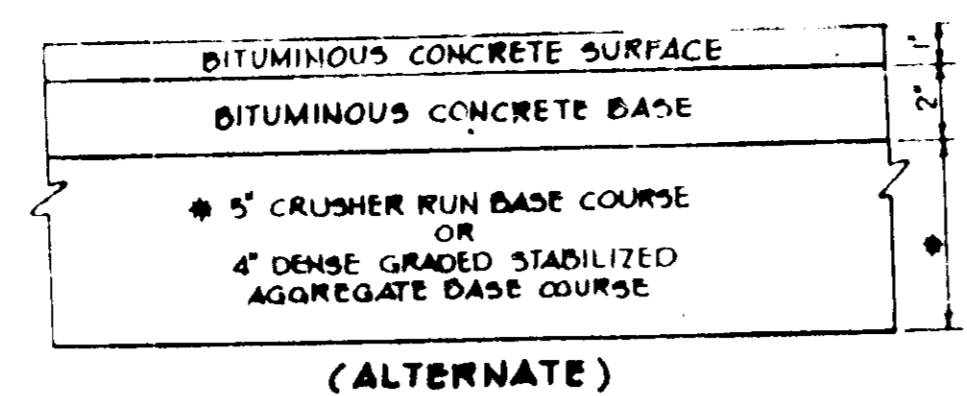
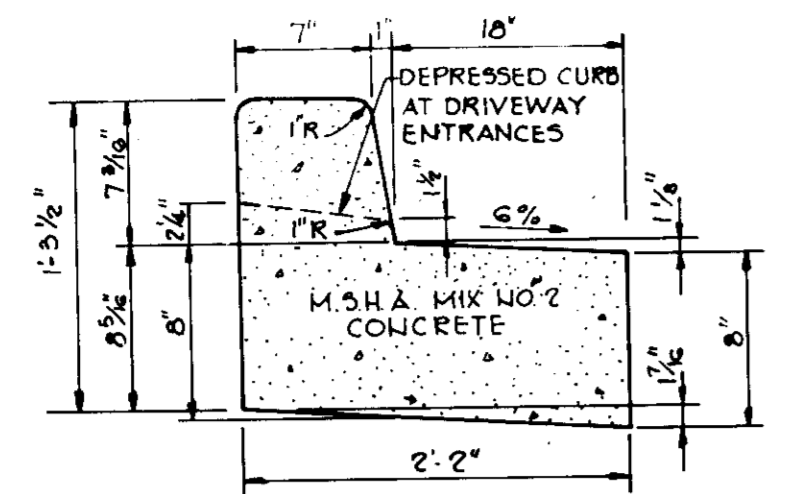
DESIGNED BY JDP
 DRAWN BY FDM
 PROJECT NO
 DATE SEPT 5, 1986
 SCALE 1"=30'
 DRAWING NO 5 OF 2

Arthur E. Muegge
 PROFESSIONAL ENGINEER
 ARTHUR E. MUEGGE #8707

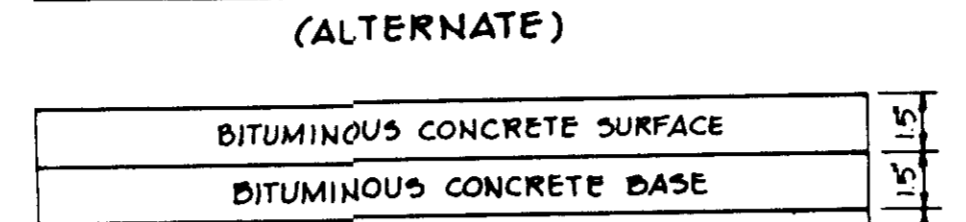
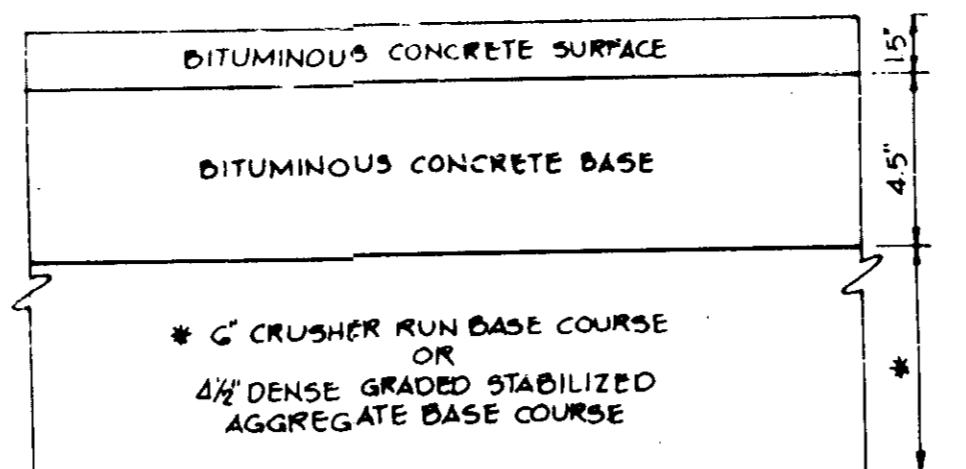
SDP-87-13



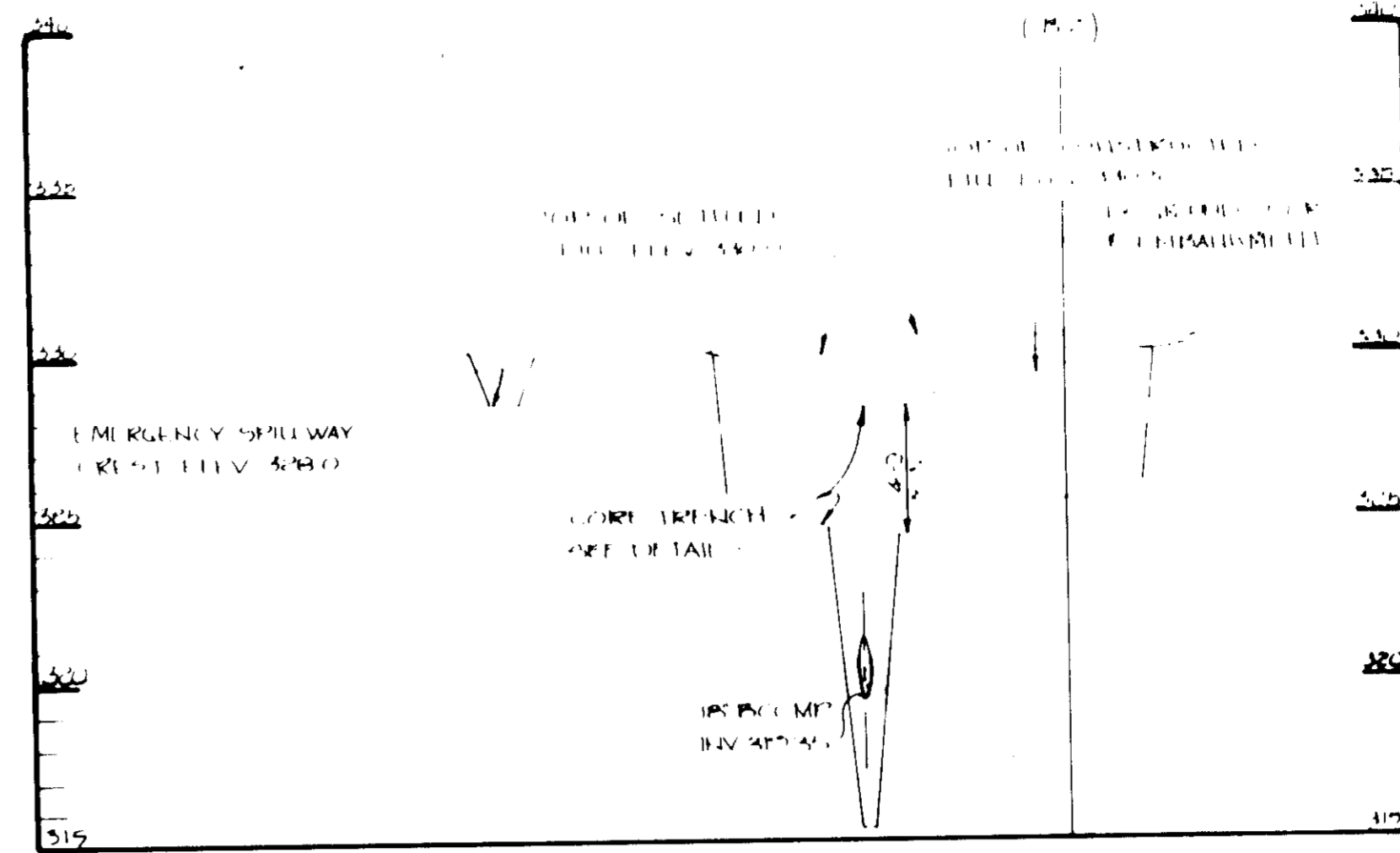
HOWARD COUNTY DESIGN MANUAL VOLUME IV - STANDARD SPECIFICATIONS AND DETAILS FOR CONSTRUCTION (DRAWING R-3.01)
 * GUTTER PAN AT THE MEDIAN EDGE OF INTERMEDIATE ARTERIALS OR THE HIGH SIDE OF SUPERELEVATED SECTIONS SHALL BE SLOPED AT THE SAME RATE AS THE PAVEMENT.



HOWARD COUNTY DESIGN MANUAL VOLUME IV - STANDARD SPECIFICATIONS AND DETAILS FOR CONSTRUCTION (DRAWING R-2.01)
 (5" PAVING, P-1)



HOWARD COUNTY DESIGN MANUAL VOLUME IV - STANDARD SPECIFICATIONS AND DETAILS FOR CONSTRUCTION (DRAWING R-2.01)
 (8" PAVING, P-3)

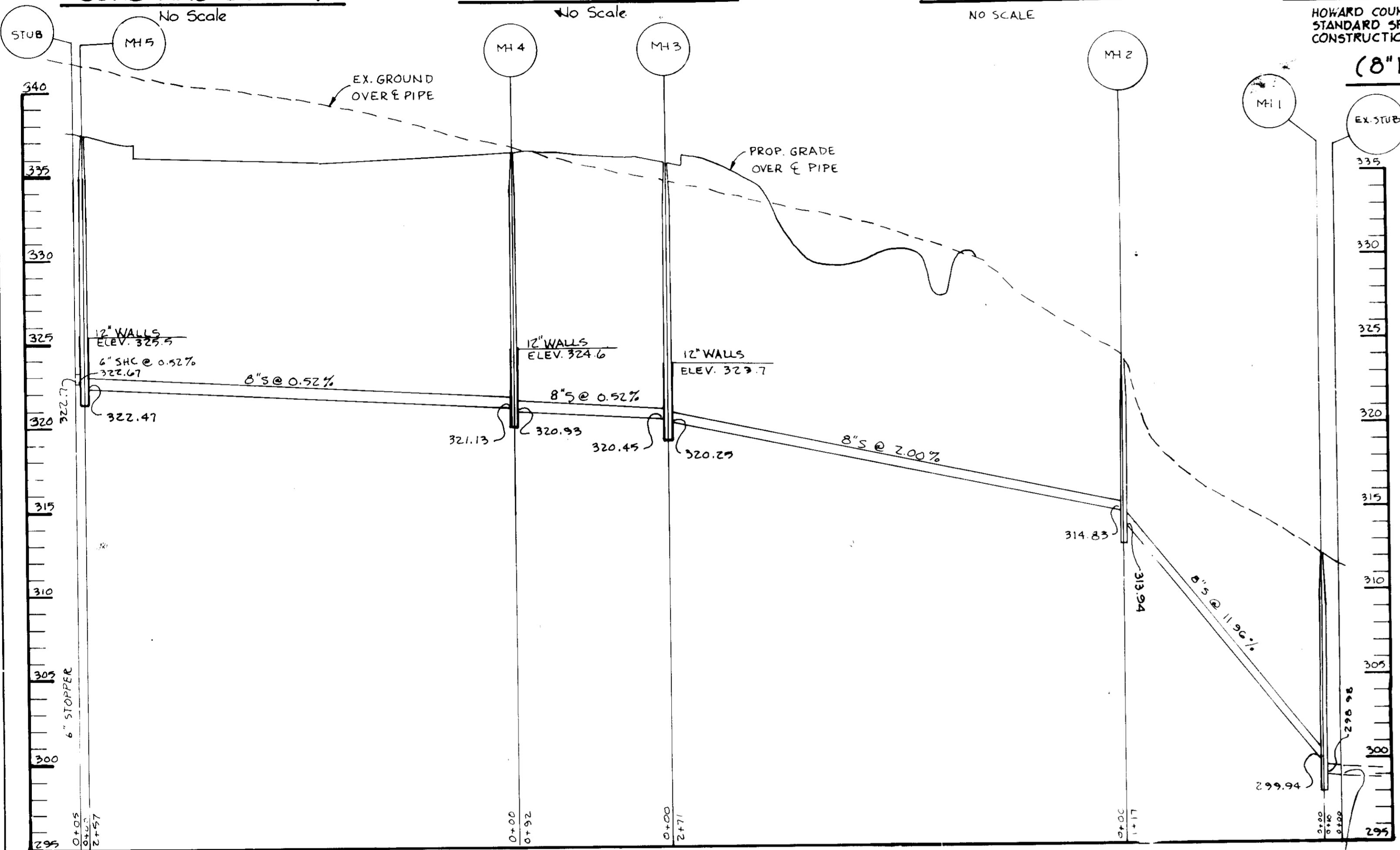


STANDARD 7" COMBINATION CURB AND GUTTER

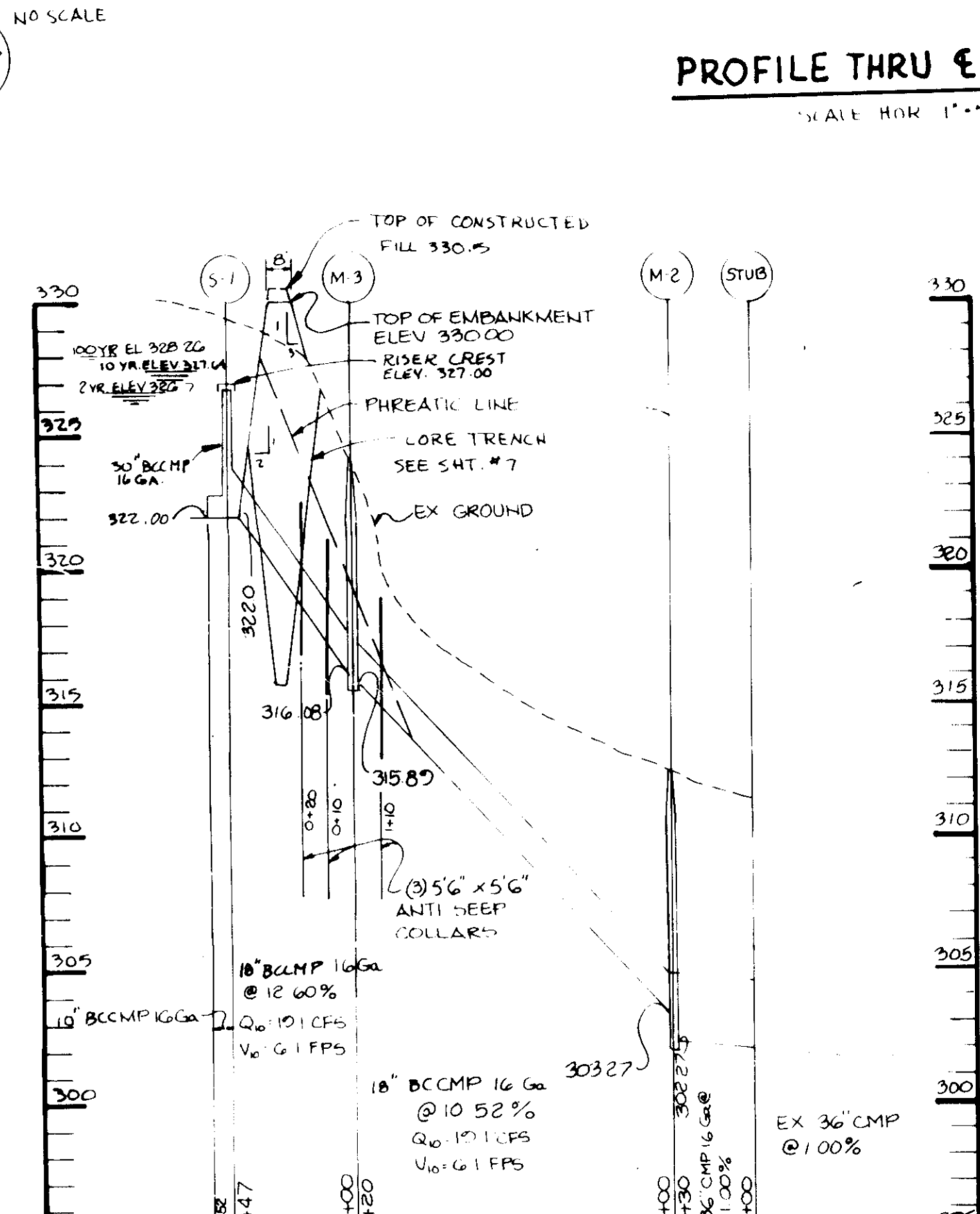
REVERSE 7" COMBINATION CURB AND GUTTER

(5" PAVING, P-1)

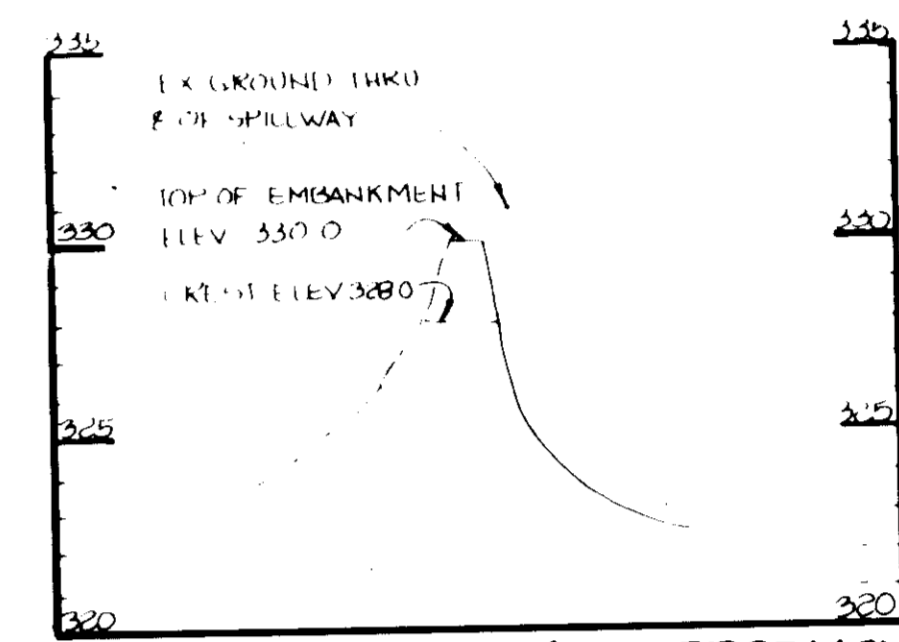
(8" PAVING, P-3)



SANITARY SEWER PROFILE SCALE: HOR. 1"=50' VERT. 1"=5'

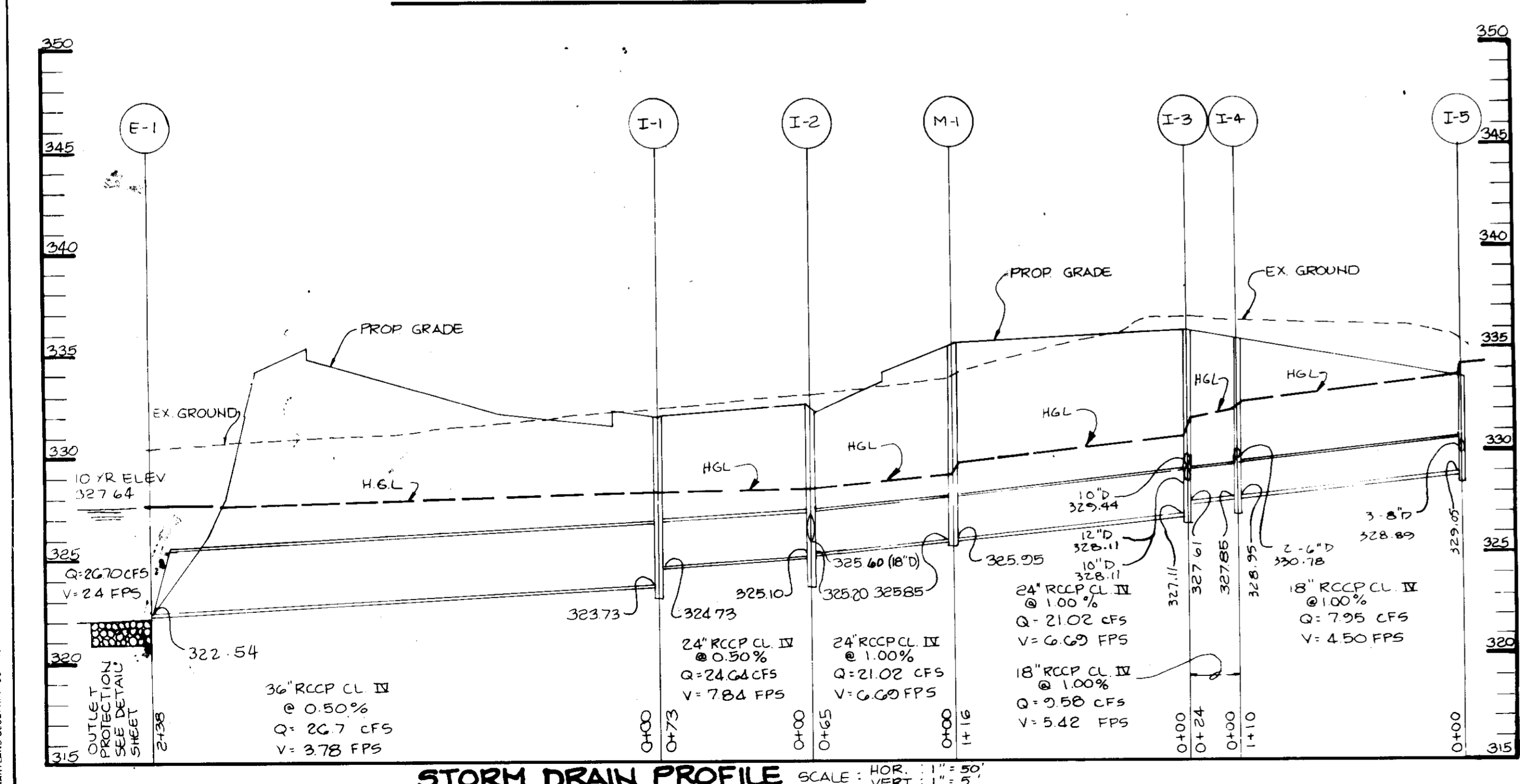


PROFILE THRU E OF EMBANKMENT

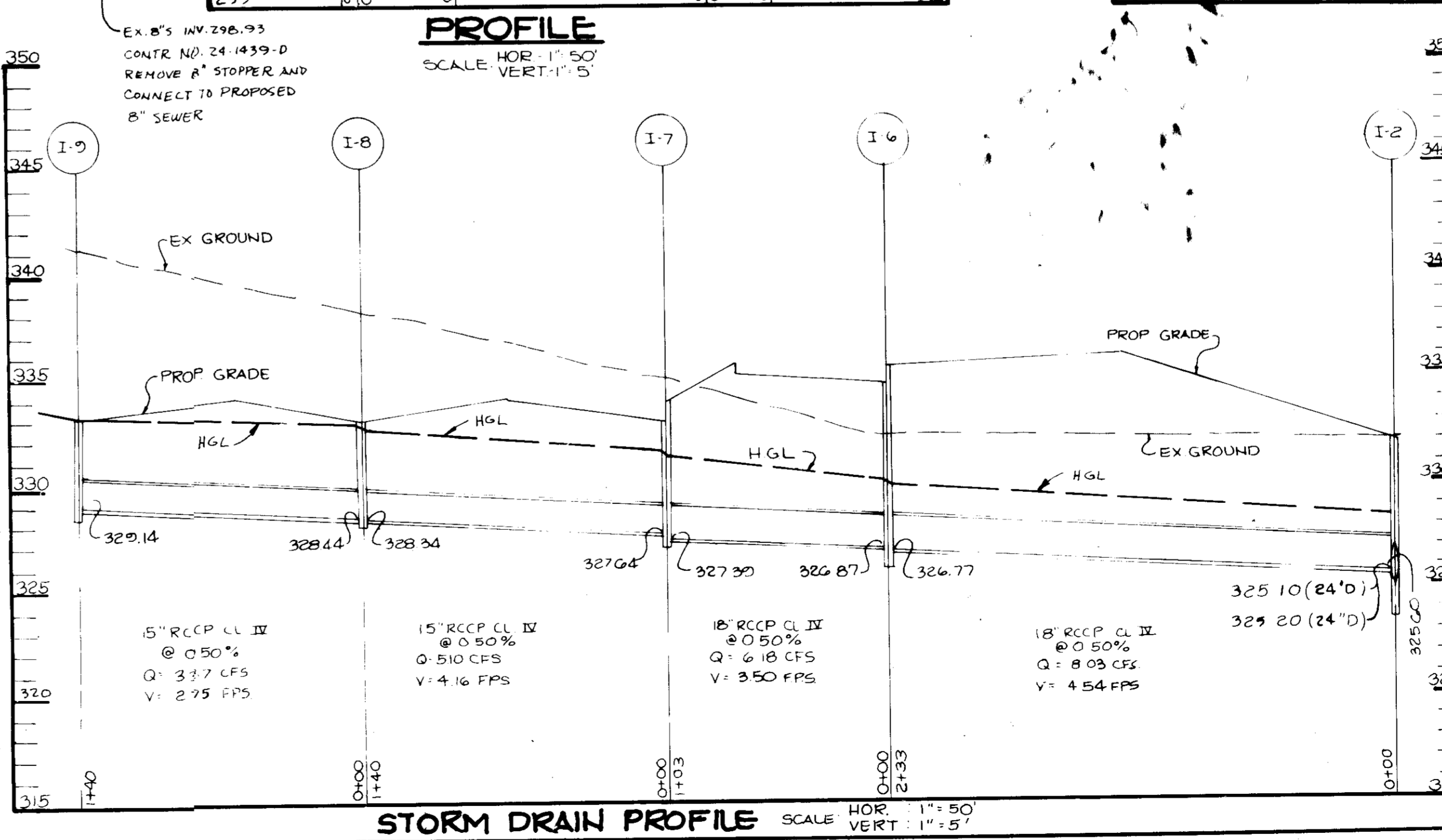


PROFILE ALONG E EMERGENCY SPILLWAY

APPROVED
 DIVISION OF LAND DEVELOPMENT &
 ZONING ADMINISTRATION
 HOWARD COUNTY, MARYLAND
 DATE 12-5-86



STORM DRAIN PROFILE SCALE: HOR. 1"=50' VERT. 1"=5'



STORM DRAIN PROFILE SCALE: HOR. 1"=50' VERT. 1"=5'

BY THE DEVELOPER:
 I HEREBY CERTIFY THAT ALL DEVELOPMENT AND/OR CONSTRUCTION SHALL BE IN ACCORDANCE WITH THESE PLANS, AND THAT ANY NECESSARY PERSONNEL INVOLVED IN THE CONSTRUCTION OF THIS PROJECT SHALL BE EMPLOYED BY THE DEVELOPER AT A DEPARTMENT OF HIGHWAY RESOURCES APPROVED TRAINING PROGRAM FOR THE CONSTRUCTION OF EROSION AND SEDIMENT CONTROL. THE PROJECT SHALL BE SLOPED TO MEET THE HOWARD SOIL CONSERVATION DISTRICT REQUIREMENTS OF THE POND WITHIN 30 DAYS OF COMPLETION.

James D. Gildner
 DEVELOPER
 1/14/87 DATE

BY THE ENGINEER:
 I CERTIFY THAT THIS PLAN FOR POND CONSTRUCTION, EROSION AND SEDIMENT CONTROL REPRESENTS A PRACTICAL AND WORKABLE PLAN BASED ON MY PERSONAL KNOWLEDGE OF THE SITE CONDITIONS. THIS PLAN WAS PREPARED IN ACCORDANCE WITH THE REQUIREMENTS OF THE HOWARD SOIL CONSERVATION DISTRICT. I HAVE NOTIFIED THE DEVELOPER THAT IF MORE THAN 10% OF THE HOWARD SOIL CONSERVATION DISTRICT WITH AN "AS-BUILT" PLAN OF THE POND WITHIN 30 DAYS OF COMPLETION.

John E. Muegge
 ENGINEER
 1-16-87 DATE

THESE PLANS HAVE BEEN REVIEWED FOR THE HOWARD SOIL CONSERVATION DISTRICT AND MEET THE TECHNICAL REQUIREMENTS FOR SMALL POND CONSTRUCTION, SOIL EROSION AND SEDIMENT CONTROL.

James M. Helm
 U.S. SOIL CONSERVATION SERVICE
 1-27-87 DATE

THESE PLANS FOR SMALL POND CONSTRUCTION, SOIL EROSION AND SEDIMENT CONTROL MEET THE REQUIREMENTS OF THE HOWARD SOIL CONSERVATION DISTRICT.

APPROVED *Robert J. Zilmer*
 HOWARD COUNTY
 1-27-87 DATE

APPROVED: FOR PUBLIC WATER AND PUBLIC SEWERAGE SYSTEMS, HOWARD COUNTY HEALTH DEPARTMENT.

James M. Gildner
 COUNTY HEALTH OFFICER
 2/10/87 DATE

APPROVED: HOWARD COUNTY OFFICE OF PLANNING AND ZONING.

James M. Gildner
 PLANNING DIRECTOR
 2-10-87 DATE

John E. Muegge
 CHIEF, DIVISION OF LAND DEVELOPMENT AND ZONING ADMINISTRATION
 2-10-87 DATE

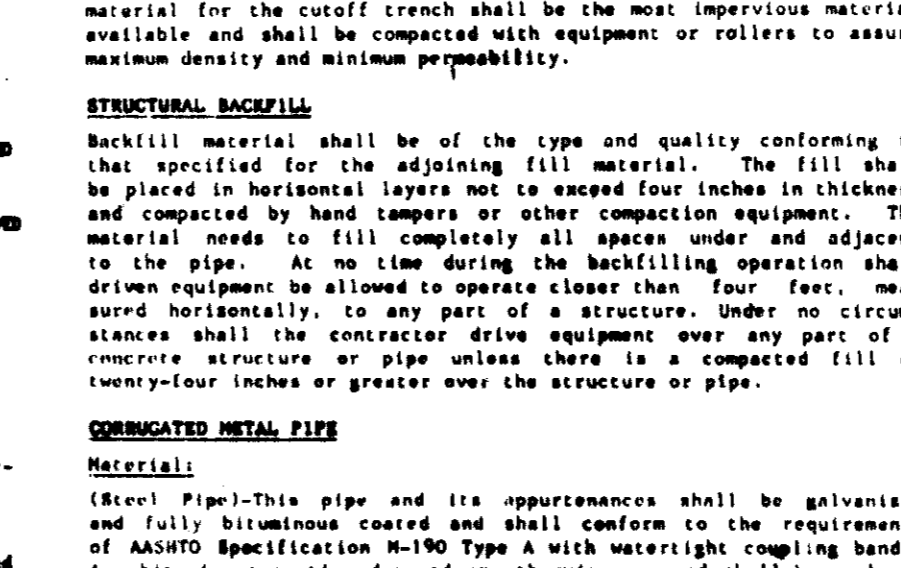
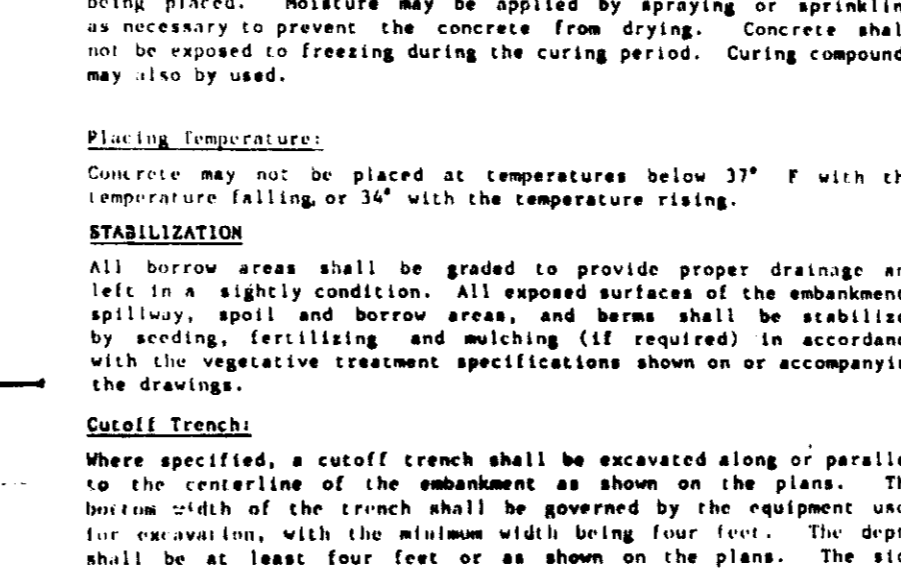
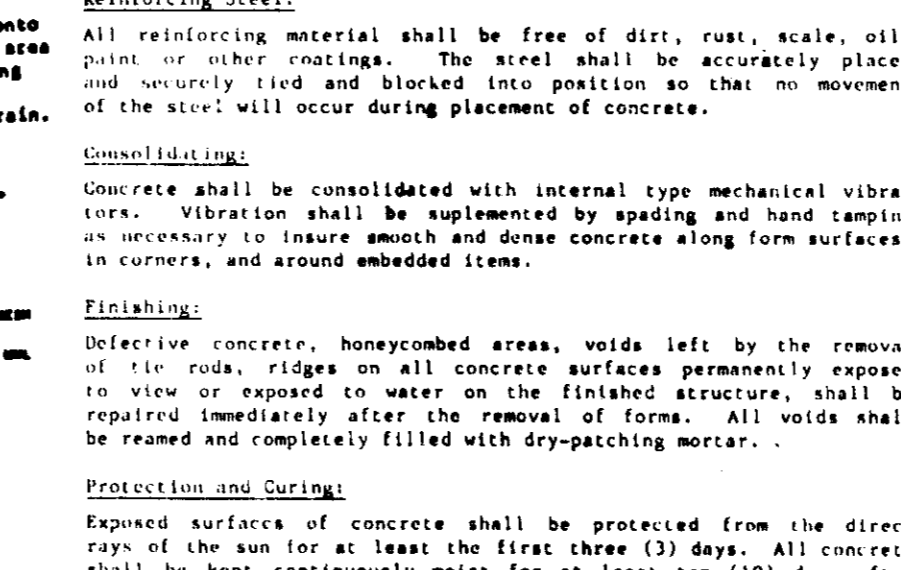
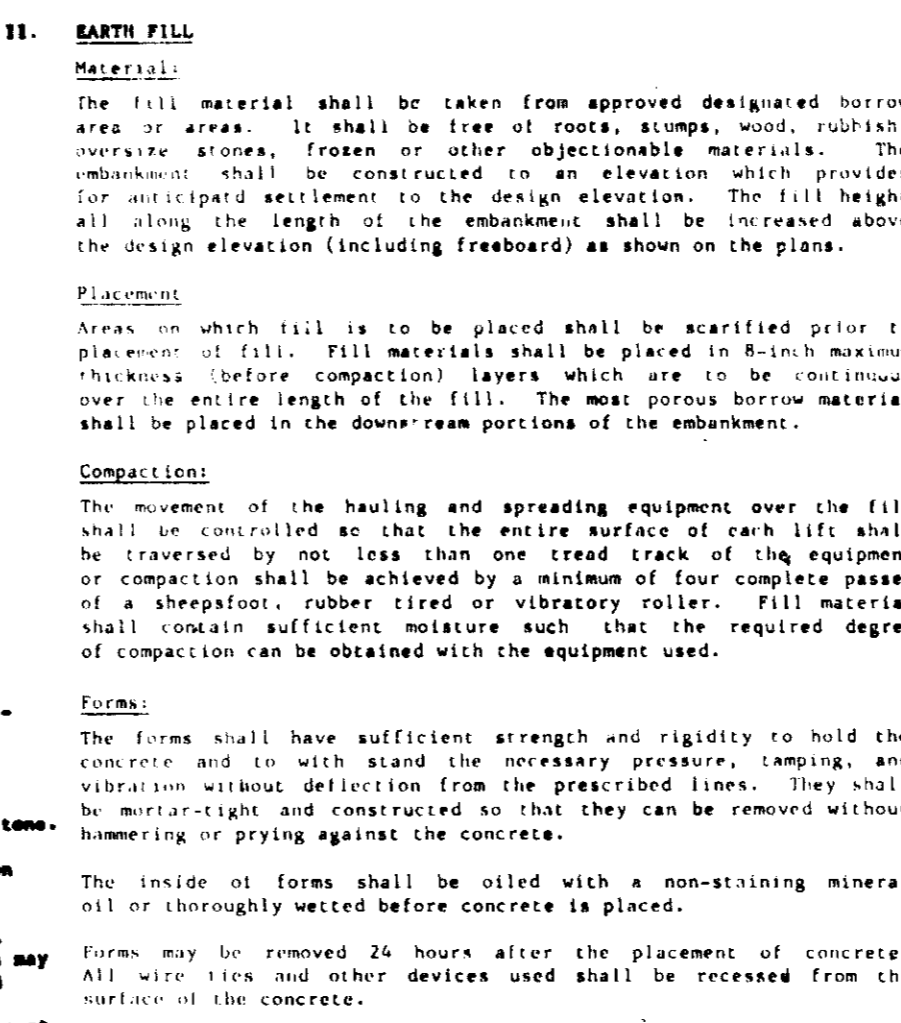
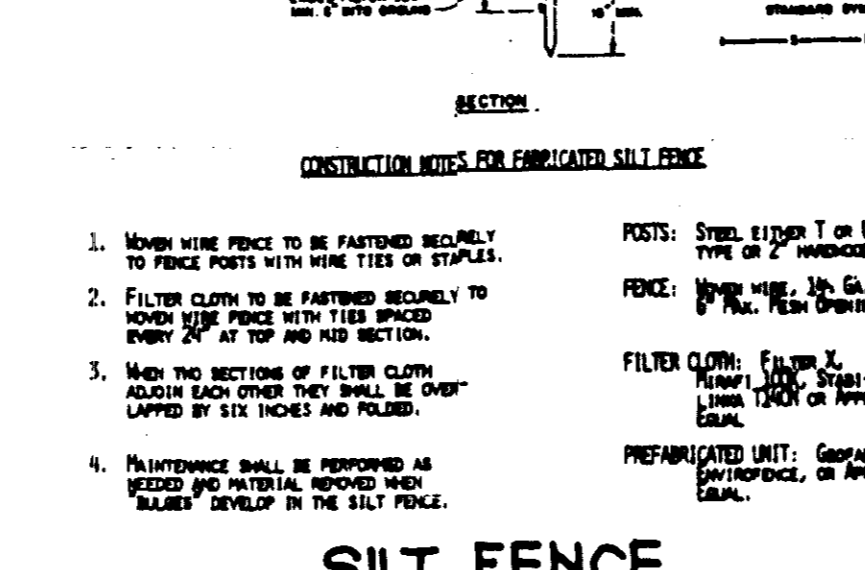
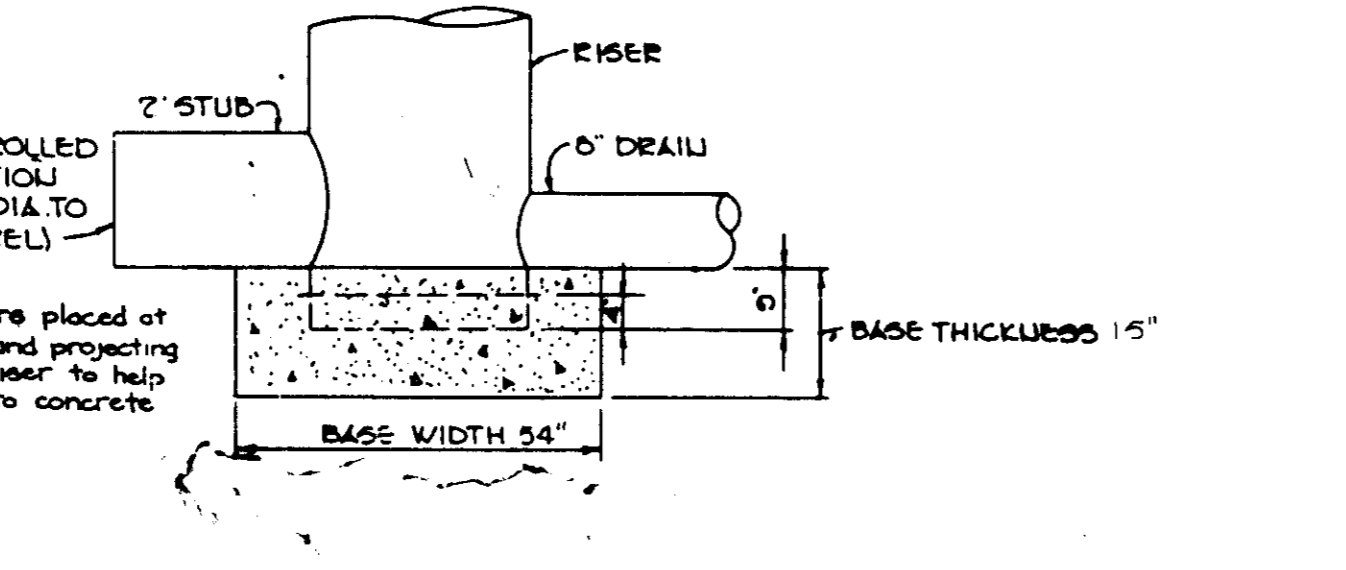
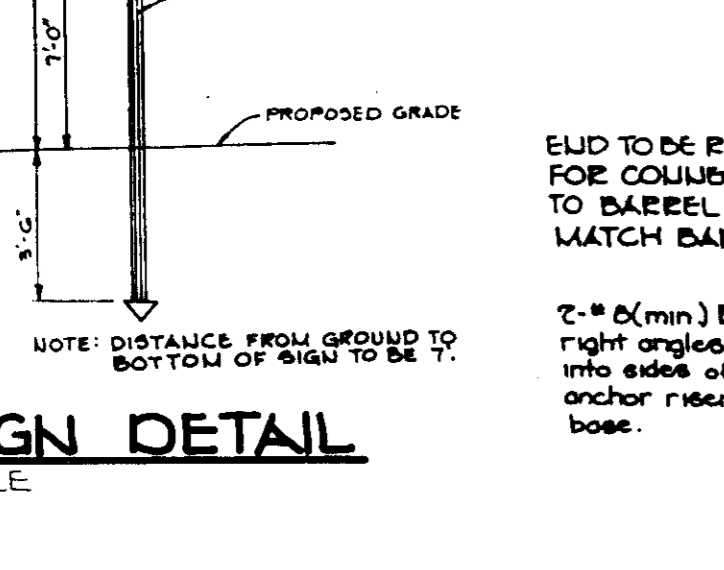
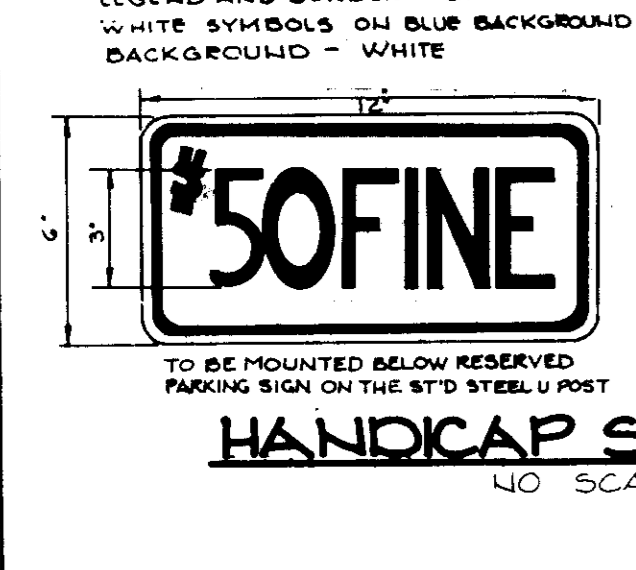
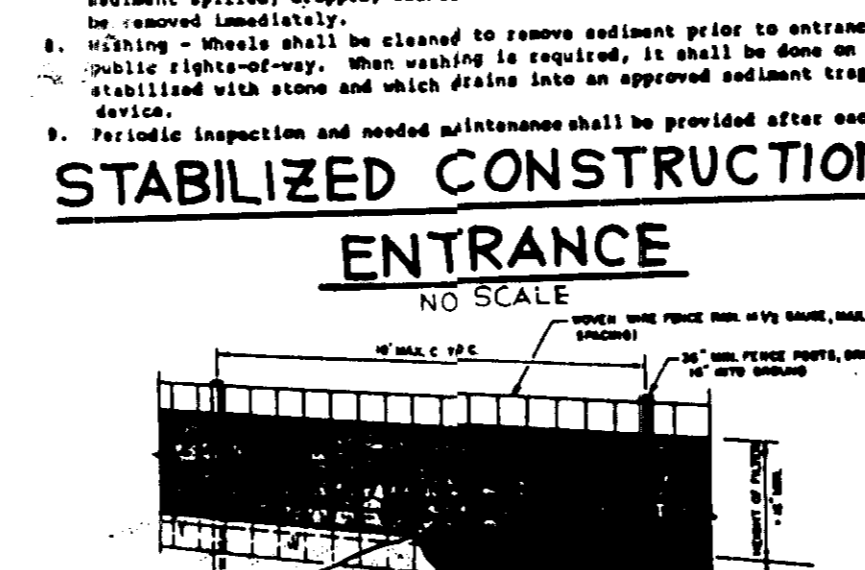
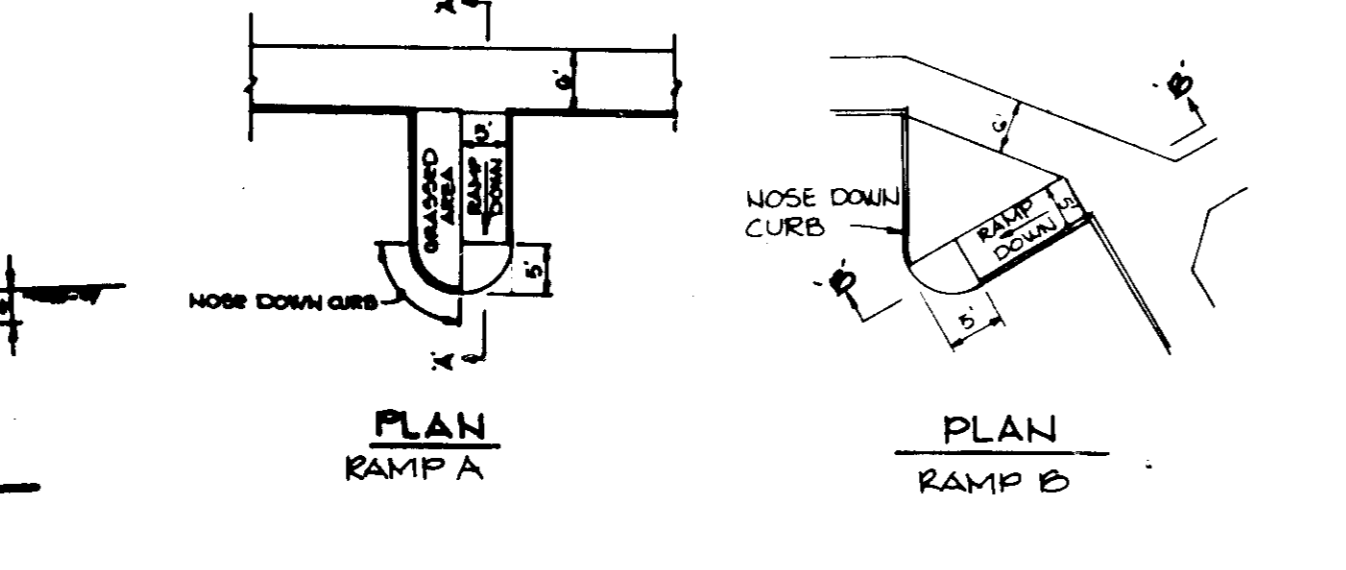
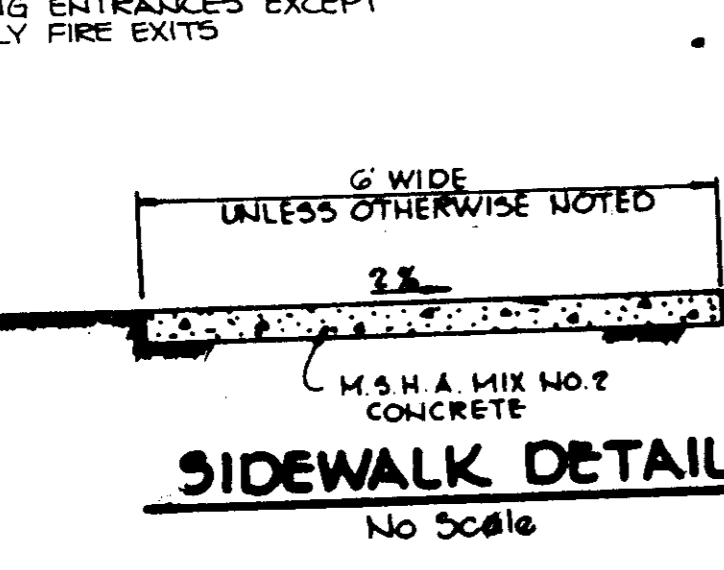
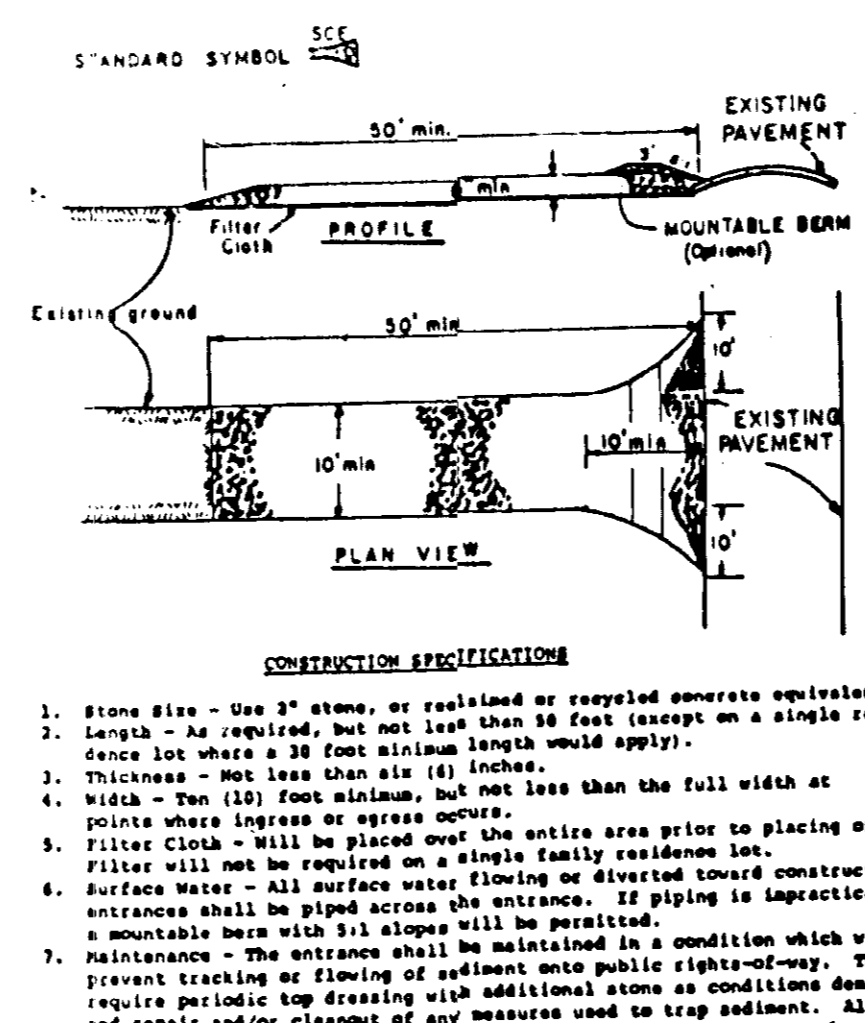
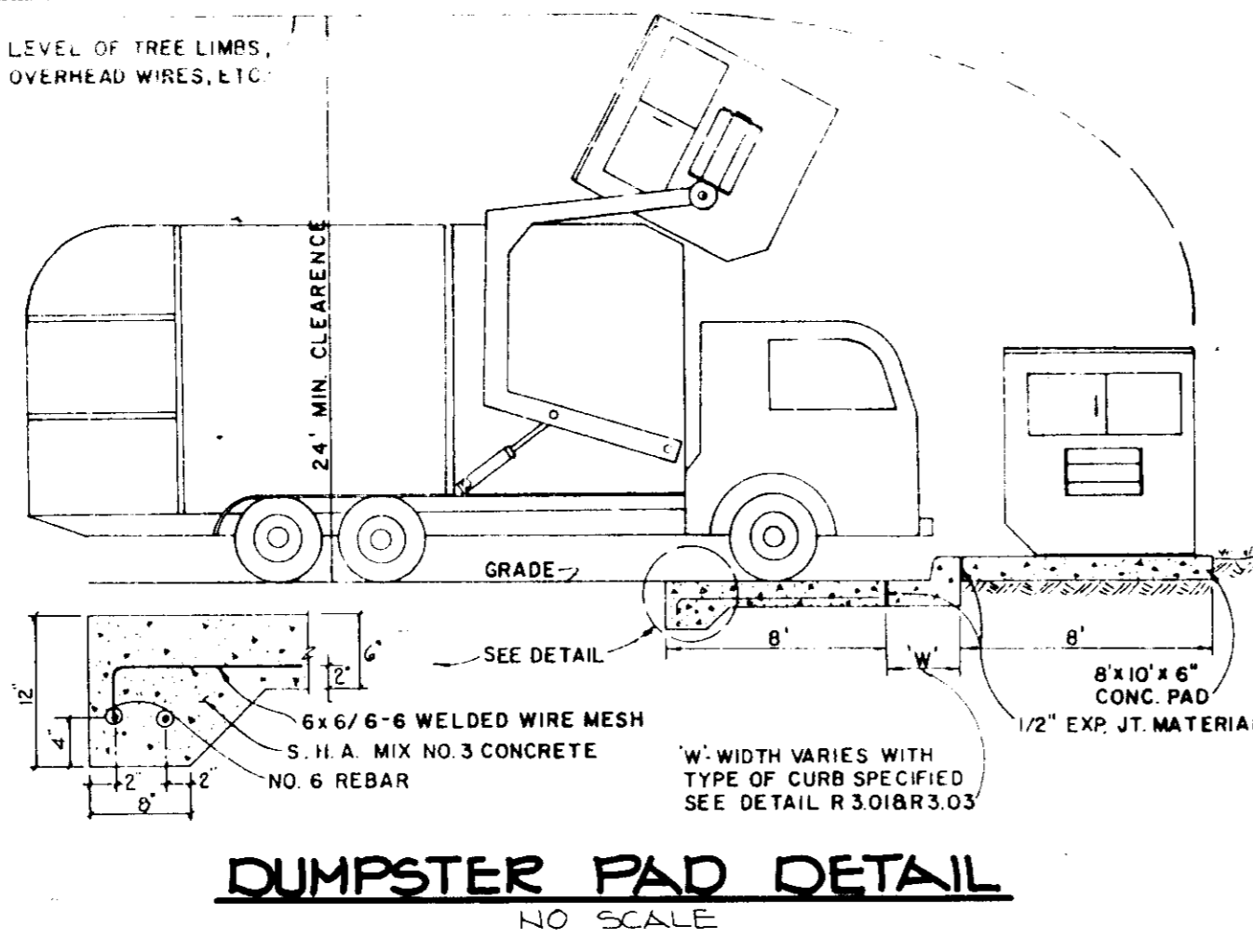
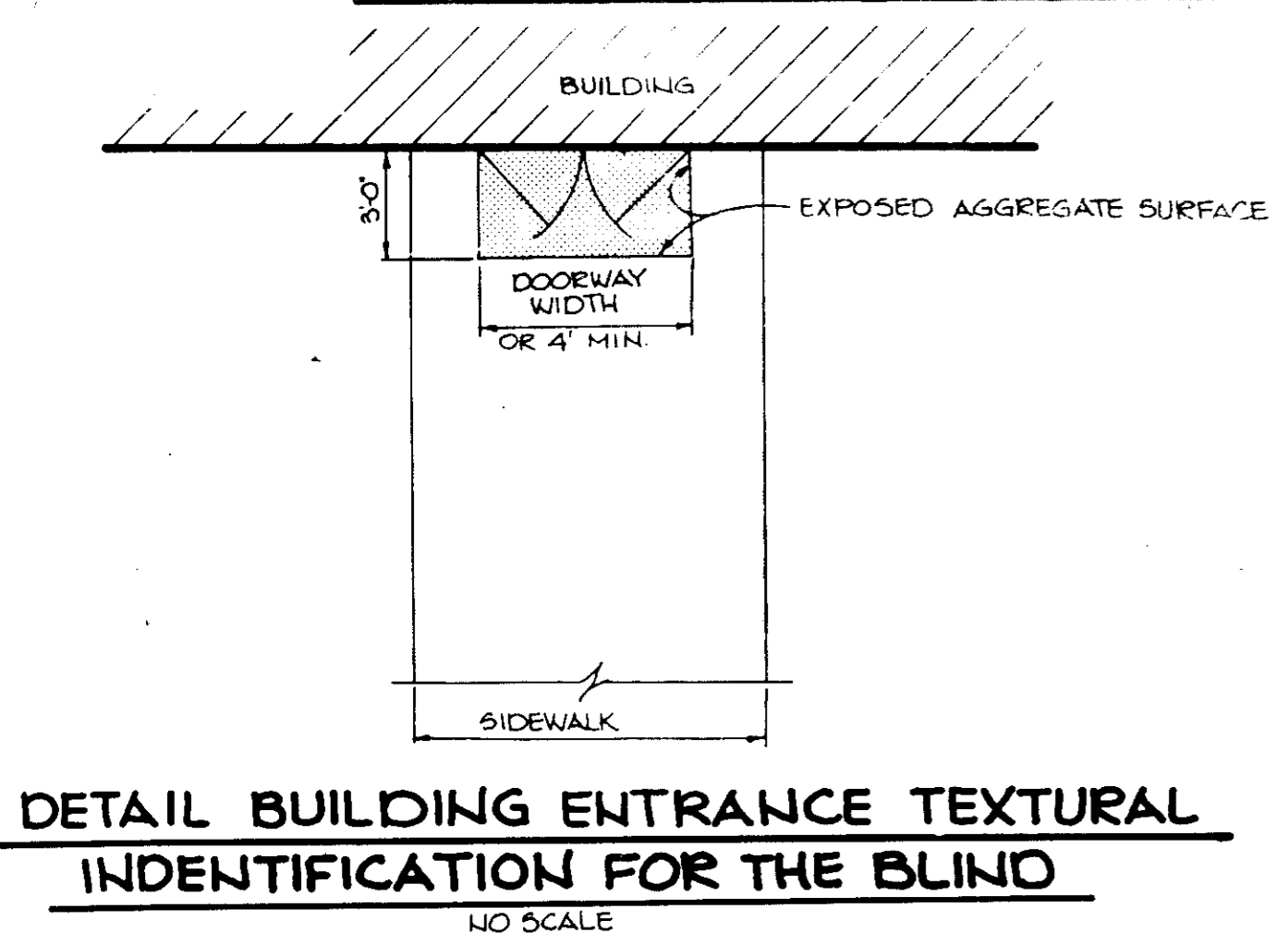
APPROVED: FOR PUBLIC WATER, PUBLIC SEWERAGE, STORM DRAINAGE SYSTEMS AND PUBLIC ROADS.

HOWARD COUNTY DEPARTMENT OF PUBLIC WORKS

John F. Nemy
 DIRECTOR
 2-9-87 DATE

John E. Muegge
 CHIEF, BUREAU OF ENGINEERING
 2-2-87 DATE

DATE	NO	REVISION
OWNER/DEVELOPER FOX RUN HOLDING ASSOCIATES LIMITED PARTNERSHIP 5950 SYMPHONY WOODS OFFICE CENTER SUITE 300 COLUMBIA, MARYLAND 21044 PHONE (301) 740-0200		
PROJECT FOX RUN		
AREA TAX MAP NO 82 PARCEL F COLUMBIA GATEWAY PLAT NO 6711 ELECTION DISTRICT HOWARD COUNTY MARYLAND		
TITL PROFILES AND DETAILS		
THE RIEMER GROUP, INC. The Riemer Group, Inc. A Land Planning, Design & Civil Engineering Firm 3105 Health Park Drive, Ellicott City, Maryland 21043 (301) 401-2690		
1/16/87 DATE		
DESIGNED BY JDP		
DRAWN BY DDE		
PROJECT NO 31902		
DATE SEPTEMBER 9, 1986		
SCALE AS SHOWN		
DRAWING NO 6 OF 2		



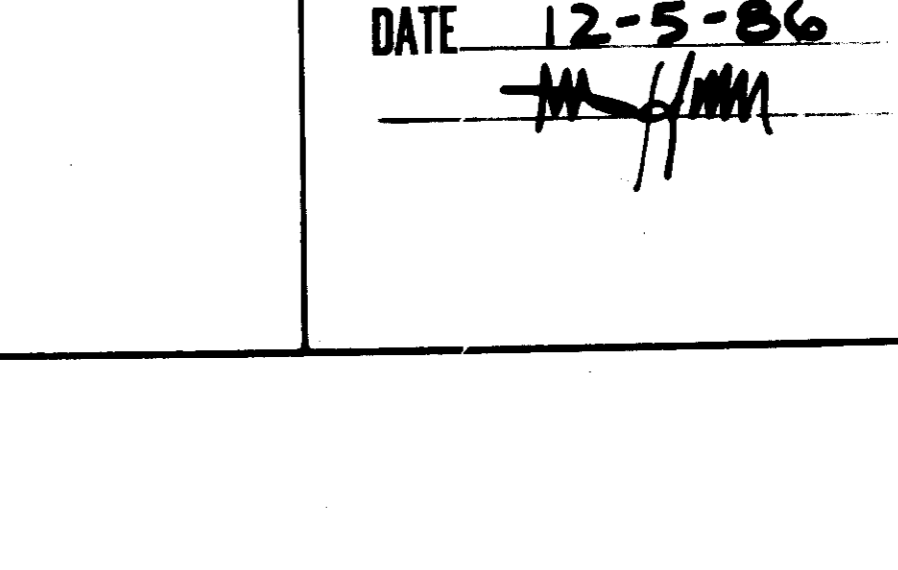
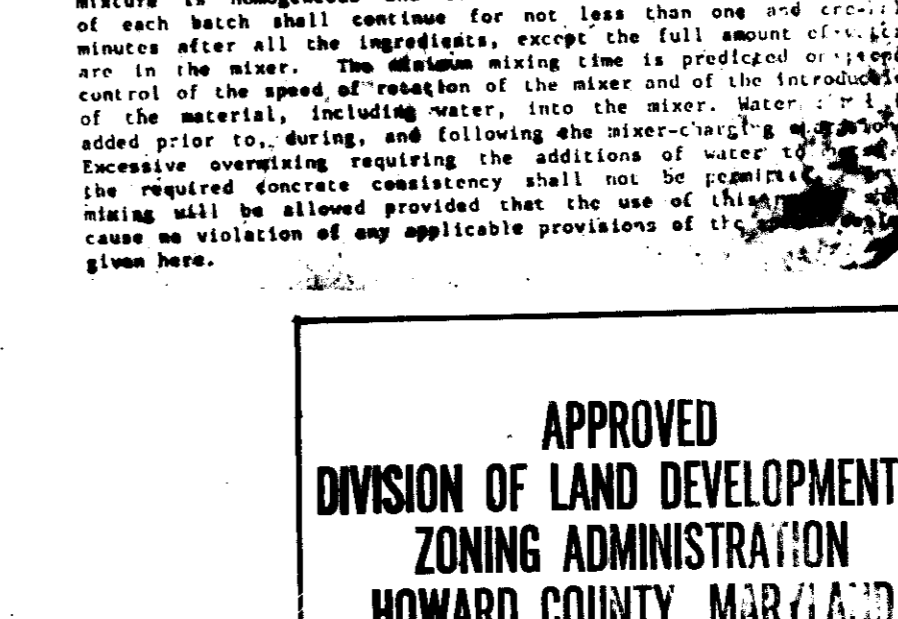
TEMPORARY SEEDING NOTES
 Apply to graded or cleared areas likely to be reseeded where a short-term vegetative cover is needed.
Soil Preparation: Loosen upper three inches of soil by raking, disking or other acceptable means before seeding.
Soil Amendment: Apply 600 lbs. per acre 10-10-10 fertilizer (14 lbs./1000 sq. ft.) where soil is highly acidic, apply dolomitic limestone at the rate of 1 ton per acre.
Seeding: For periods March 1 thru April 30 and from August 15 thru November 15, seed with 140 lbs. per acre of annual ryegrass (3.2 lbs./1000 sq. ft.). For the period May 1 thru August 14, seed with 3 lbs. per acre of creeping lovegrass (0.7 lbs./1000 sq. ft.). For the period November 15 thru February 28, protect site by applying 2 tons per acre of well anchored straw mulch and seed as soon as possible in the spring, or use sod.
Mulching: Apply 1 1/2 to 2 tons per acre (70 to 90 lbs./1000 sq. ft.) of unwashed small grain straw immediately after seeding. Anchor mulch immediately after application using mulch anchoring tool or 2 1/2 gal. per acre (4 gal./1000 sq. ft.) of emulsified asphalt on flat areas. On slopes, 8 ft. or higher, use 3 1/2 gal. per acre (8 gal./1000 sq. ft.) for anchoring.
 Refer to the 1983 MARYLAND STANDARDS AND SPECIFICATIONS FOR SOIL EROSION AND SEDIMENT CONTROL for rate and methods not covered.
PERMANENT SEEDING NOTES
 Apply to graded or cleared areas not subject to immediate further disturbance where a permanent long-lived vegetative cover is needed.
Soil Preparation: Loosen upper three inches of soil by raking, disking or other acceptable means before seeding.
Soil Amendment: Apply 0-20-20 fertilizer at the rate of 600 lbs. per acre. Apply 1 lb. per acre (0.25 lbs./1000 sq. ft.) of a mixture of certified 'Merion' Kentucky bluegrass, common Kentucky bluegrass @ 40 @ 20 lbs. per acre (0.5 lb./1000 sq. ft.) for the period May 1 thru July 31, seed with 40 lbs. per acre of certified bermudagrass, during the period of October 15 thru February 28, protect site by (Option 1) 2 tons per acre of well-anchored straw mulch and seed as soon as possible in the spring. (Option 2) Use sod. (Option 3) Seed with 40-40-20 mix specified above and mulch with 2 tons/acre well-anchored straw.
Mulching: Apply 1 1/2 to 2 tons per acre (70 to 90 lbs./1000 sq. ft.) of unwashed small grain straw immediately after seeding. Anchor mulch immediately after application using mulch anchoring tool or 2 1/2 gal. per acre (4 gal./1000 sq. ft.) of emulsified asphalt on flat areas. On slopes 8 ft. or higher, use 3 1/2 gal. per acre (8 gal./1000 sq. ft.) for anchoring.
Maintenance: Inspect all seeded areas and make needed repairs, replacements and reseedings.
SEEDING CONTROL NOTES
 1. A minimum of 24 hours notice must be given to the Howard County Office of Inspections and Permits prior to the start of any construction (992-2437).
 2. All vegetative and structural practices are to be installed according to the provisions of this plan and are to be in accordance with the 1983 MARYLAND STANDARDS AND SPECIFICATIONS FOR SOIL EROSION AND SEDIMENT CONTROL.
 3. Following initial soil disturbance or re-disturbance, permanent or temporary stabilization shall be completed within: a) 7 calendar days for all permanent sediment control devices, perimeter ditches, slopes and all slopes greater than 3:1; b) 14 days as to all other disturbed or graded areas on the project site.
 4. All sediment traps/basins shown must be fenced and warning signs posted around the perimeter in accordance with Vol. 1, Chapter 12, of the HOWARD COUNTY DESIGN MANUAL, Storm Drainage.
 5. All disturbed areas must be stabilized within the time period specified above in accordance with the 1983 MARYLAND STANDARDS AND SPECIFICATIONS FOR SOIL EROSION AND SEDIMENT CONTROL for permanent seedings (Sec. 51) and (Sec. 34). Temporary seedings (Sec. 30) and mulching (Sec. 52). Temporary stabilization with mulch alone can only be done when recommended seeding dates do not allow for proper establishment of permanent vegetation.
 6. All sediment control structures are to remain in place and are to be maintained in operative condition until permission for their removal has been obtained from the Howard County Sediment Control Inspector.
 7. Site Analysis:
 Total Area of Site: 4.54 acres
 Area Disturbed: 3.51 acres
 Area to be roofed or paved: 0.51 acres
 Area to be vegetatively stabilized: 0.52 acres
 Total Cost: \$1,248,000.00
 TOTAL TOP SOIL: 4,54 cu. yds.
 8. Any sediment control practice which is disturbed by grading activity for placement of utilities must be repaired on the same day of disturbance.
 9. Additional sediment controls must be provided, if deemed necessary by the Howard County DPW Sediment Control Inspector.
 10. Site grading will begin only after all permanent sediment control measures have been installed and are in a functioning condition.
 11. Sediment will be removed from traps when its depth reaches the clean out elevation shown on the plan.
SITE PROTECTION
 Areas under pipe, borrow pits, embankment and structural works shall be chained, graded and the topsoil stripped to remove all trees, vegetation, rocks or other objectionable material. Channel banks and sharp breaks shall be sloped to no steeper than 1:1.
 Areas covered by the pond or reservoir will be cleared of all trees, brush, logs, fences, highland and other objectionable material unless otherwise designated on the plan. Trees, brush and stumps shall be cut approximately level with the ground surface.
 All cleared and grubbed material shall be disposed of outside the limits of the dam and reservoir as directed by the owner or his representative. When specified, a sufficient quantity of topsoil shall be stockpiled in a suitable location for use on the embankment.
REBAR
 The concrete ingredients shall be mixed in batch mixers until the mixture is homogeneous and of uniform consistency. The ratio of each batch shall continue for not less than one and one-half minutes after all the ingredients, except the full amount of water, are in the mixer. The minimum mixing time is prolonged on account of the speed of rotation of the mixer and of the introduction of the material, including water, into the mixer. Water shall be added prior to, during, and following the mixing process. Excessive overwatering, requiring the addition of water to the required concrete consistency shall not be permitted. The required consistency shall be maintained throughout the placing and curing process. The use of plastic shall be allowed provided that the use of plastic does not cause a violation of any applicable provisions of the plan herein.

APPROVED: FOR PUBLIC WATER AND PUBLIC SEWERAGE SYSTEMS, HOWARD COUNTY HEALTH DEPARTMENT.
 COUNTY HEALTH OFFICER: *[Signature]* 2/10/87
APPROVED: HOWARD COUNTY OFFICE OF PLANNING AND ZONING.
 PLANNING DIRECTOR: *[Signature]* 2-10-87
 CHIEF, DIVISION OF LAND DEVELOPMENT AND ZONING ADMINISTRATION: *[Signature]* 2-10-87
APPROVED: FOR PUBLIC WATER, PUBLIC SEWERAGE, STORM DRAINAGE SYSTEMS.
 DIRECTOR: *[Signature]* 2-9-87
 CHIEF, BUREAU OF ENGINEERING: *[Signature]* 2-9-87

OWNER/DEVELOPER
 FOX RUN HOLDING ASSOCIATES LIMITED PARTNERSHIP
 5750 SYMPHONY WOODS OFFICE CENTER
 SUITE 300
 COLUMBIA, MARYLAND 21044
 PHONE: (301) 740-0200
PROJECT:
 FOX RUN
 AREA TAX MAP NO. 45 PARCEL F
 COLUMBIA GATEWAY PLAT 6771
 GTH ELECTION DISTRICT
 HOWARD COUNTY, MARYLAND
TITLE: STORM WATER MANAGEMENT AND SEDIMENT CONTROL NOTES AND DETAILS

THE RIEMER GROUP, INC.
 The Riemer Group, Inc. A Land Planning, Design & Civil Engineering Firm
 3105 Health Park Drive, Ellicott City, Maryland 21043 (301) 461-8890
 DATE: 1-16-87
 DESIGNED BY: J.D.P.
 DRAWN BY: D.D.B.
 PROJECT NO: 91902
 DATE: SEPTEMBER 9, 1986
 SCALE: AS SHOWN
 DRAWING NO: 7 OF 2
SDP-87-13

APPROVED
 DIVISION OF LAND DEVELOPMENT & ZONING ADMINISTRATION
 HOWARD COUNTY, MARYLAND
 DATE: 12-5-86
[Signature]

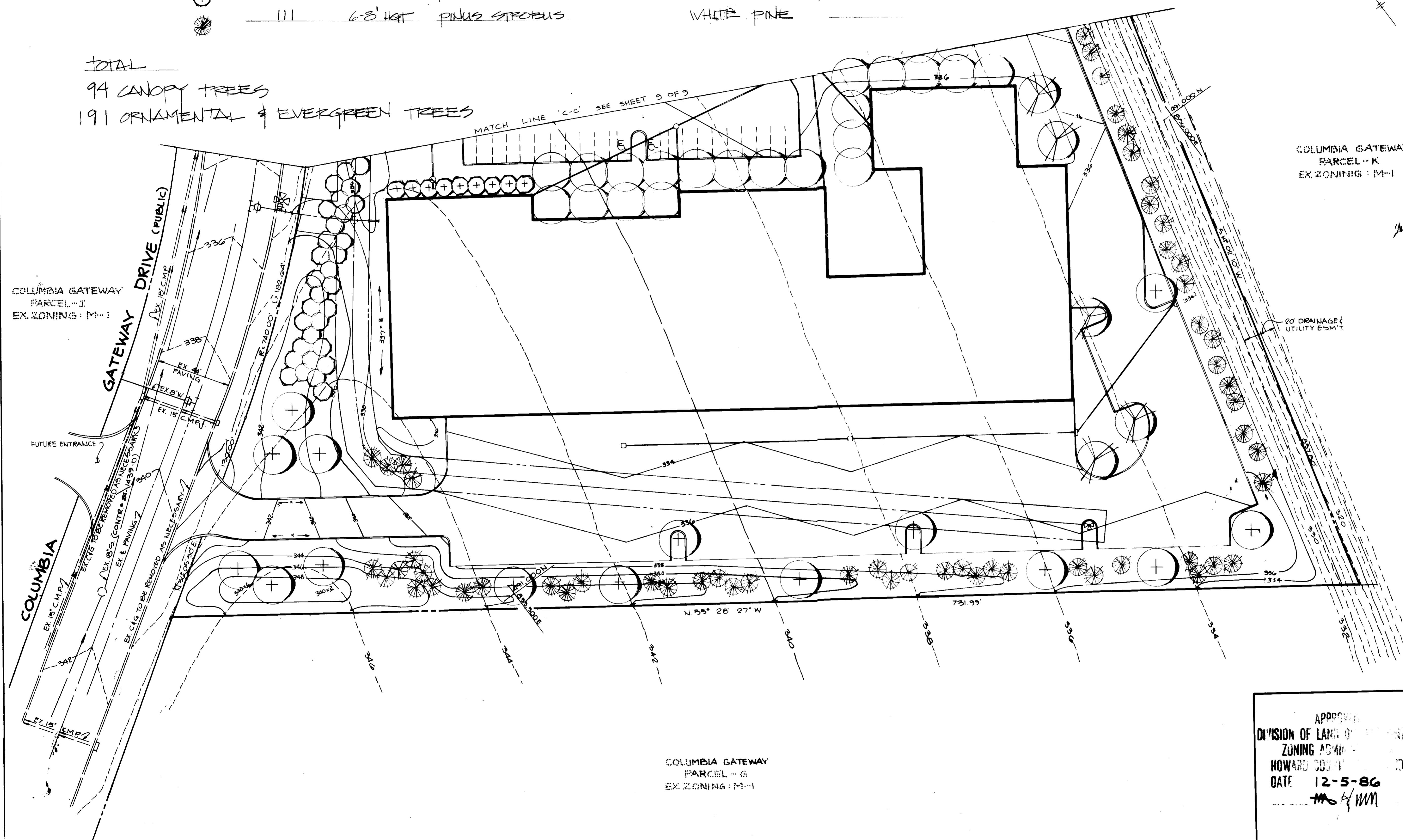


KEY	QTY	SIZE	LATIN NAME	COMMON NAME
	24	2 1/2"-3" CAL	PLATANUS ACERIFOLIA	LONDON PLANE
	29	2 1/2"-3" CAL	QUERCUS PALUSTRIS	PIN OAK
	41	2 1/2"-3" CAL	TILIA CORDATA 'GREENSPIKE'	LITTLELEAF LINDEN
	65	2-2 1/2" CAL	MALUS ZUMI CALOCARPA	ZUMI FLOWERING CRAB
	15	2-2 1/2" CAL	PRUNUS YEDOENSIS	YOSHINO CHERRY
	111	6-8' HGT	PINUS STROBUS	WHITE PINE

NOTE:

1. ALL AREAS AROUND BUILDINGS TO BE SODDED. PERIMETER TO BE SEEDED.
2. ALL PLANTING AS PER HRP & GREENSPACE SPECIFICATIONS.

TOTAL
 94 CANOPY TREES
 191 ORNAMENTAL & EVERGREEN TREES



APPROVED: FOR PUBLIC WATER AND PUBLIC SEWERAGE SYSTEMS, HOWARD COUNTY HEALTH DEPARTMENT. <i>J. M. [Signature]</i> 2-10-87 COUNTY HEALTH OFFICER DATE
APPROVED: HOWARD COUNTY OFFICE OF PLANNING AND ZONING. <i>J. [Signature]</i> 2-10-87 PLANNING DIRECTOR DATE
APPROVED: CHIEF, DIVISION OF LAND DEVELOPMENT AND ZONING ADMINISTRATION. <i>[Signature]</i> 2-10-87 DATE
APPROVED: FOR PUBLIC WATER, PUBLIC SEWERAGE, STORM DRAINAGE SYSTEMS AND PUBLIC ROADS. HOWARD COUNTY DEPARTMENT OF PUBLIC WORKS <i>[Signature]</i> 2-9-87 DIRECTOR DATE
APPROVED: CHIEF, BUREAU OF ENGINEERING & SURVEYING <i>[Signature]</i> 2-2-87 DATE

DATE	NO.	REVISION

OWNER/DEVELOPER
 FOX RUN HOLDING ASSOCIATES LIMITED PARTNERSHIP
 5950 SYMPHONY WOODS OFFICE CENTER
 SUITE 300
 COLUMBIA, MARYLAND 21044
 PHONE (301) 740-0200

PROJECT: **FOX RUN**

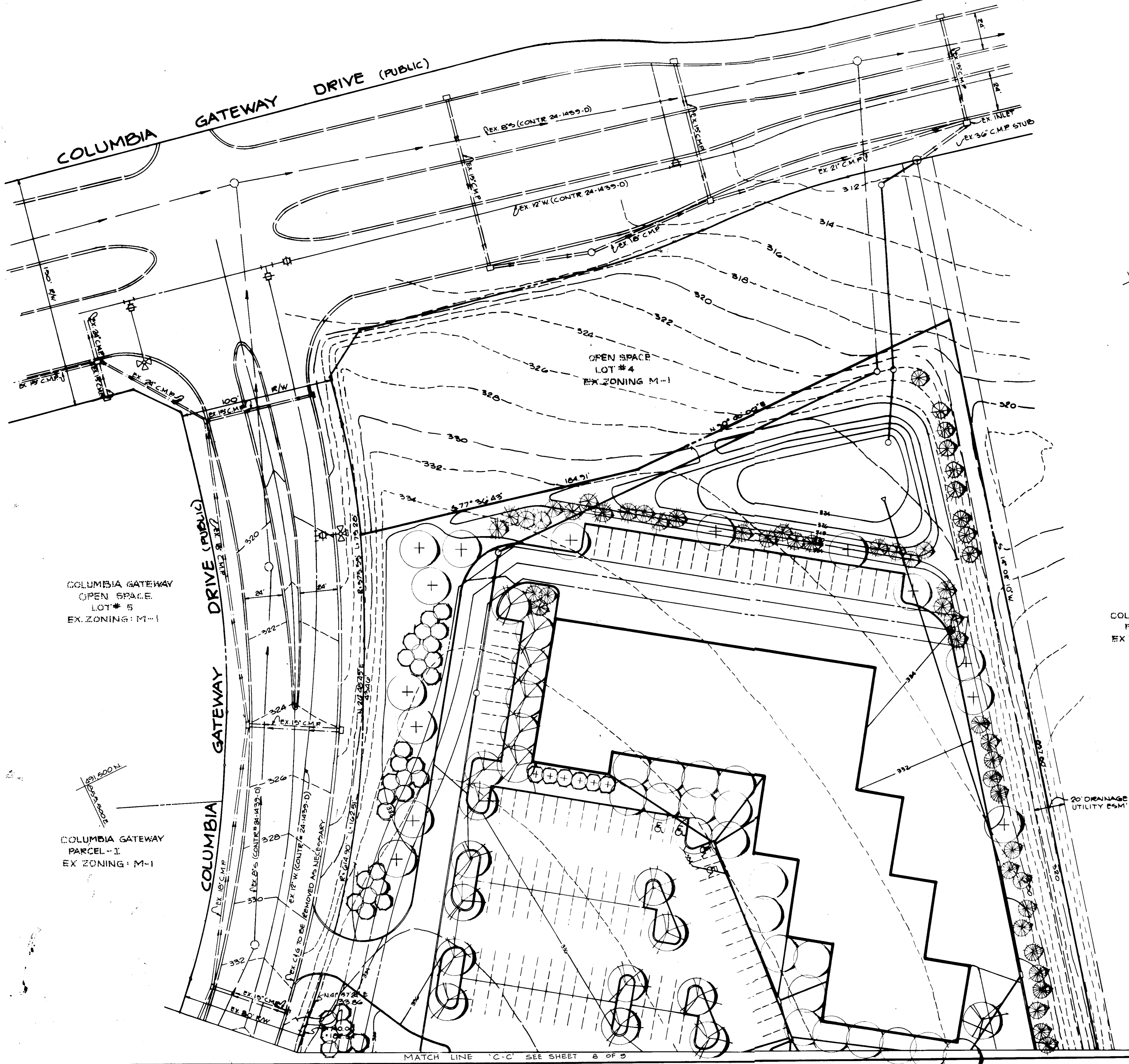
AREATAX MAP NO. 43 PARCEL: F
 COLUMBIA GATEWAY PLAT # 6771
 24 ELECTION DISTRICT
 HOWARD COUNTY MARYLAND

TITLE: **PLANTING PLAN**

APPROVED:
 DIVISION OF LAND DEVELOPMENT AND ZONING ADMINISTRATION
 HOWARD COUNTY
 DATE: 12-5-86
[Signature]

THE RIEMER GROUP, INC.
 The Riemer Group, Inc. A Land Planning, Design & Civil Engineering Firm
 3106 Health Park Drive, Ellicott City, Maryland 21043 (301) 481-2880

DESIGNED BY: JFW
 DRAWN BY: JFW
 PROJECT NO: 31902
 DATE: 9/7/86
 SCALE: AS SHOWN
 DRAWING NO: 0 OF 3



APPROVED: FOR PUBLIC WATER AND PUBLIC SEWERAGE SYSTEMS,
HOWARD COUNTY HEALTH DEPARTMENT.

Gregory M. ... 2-10-87
COUNTY HEALTH OFFICER DATE

APPROVED: HOWARD COUNTY OFFICE OF PLANNING AND ZONING.

Thomas ... 2-10-87
PLANNING DIRECTOR DATE

John ... 2-10-87
CHIEF, DIVISION OF LAND DEVELOPMENT AND ZONING ADMINISTRATION DATE

APPROVED: FOR PUBLIC WATER, PUBLIC SEWERAGE, STORM DRAINAGE SYSTEMS AND PUBLIC ROADS.

HOWARD COUNTY DEPARTMENT OF PUBLIC WORKS

George ... 2-5-87
DIRECTOR DATE

... 2-5-87
CHIEF, BUREAU OF ENGINEERING DATE

DATE	NO.	REVISION

OWNER/DEVELOPER
FOX RUN HOLDING ASSOCIATES LIMITED PARTNERSHIP
5950 SYMPHONY WOODS OFFICE CENTER
SUITE 300
COLUMBIA, MARYLAND 21044
PHONE (301) 740-0200

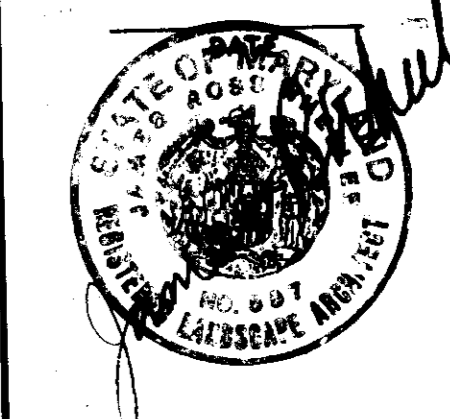
PROJECT **FOX RUN**

AREA TAX MAP NO. 43 PARCEL F
COLUMBIA GATEWAY PLAT. NO. 6771
6th ELECTION DISTRICT
HOWARD COUNTY MARYLAND

TITLE: **PLANTING PLAN**

THE RIEMER GROUP, INC.
The Riemer Group, Inc. A Land Planning, Design & Civil Engineering Firm
3106 Health Park Drive, Ellicott City, Maryland 21048 (301) 481-2800

APPROVED
DIVISION OF LAND DEVELOPMENT &
ZONING ADMINISTRATION
HOWARD COUNTY MARYLAND
DATE **12-5-86**
H. ...



DESIGNED BY: *JFW*
DRAWN BY: *JFW*
PROJECT NO: 51902
DATE: 9/7/86
SCALE: 1" = 20'
DRAWING NO. 2 OF 2

SDP-87-13

MARYLAND SURVEYING CO., INC. 12/85/87