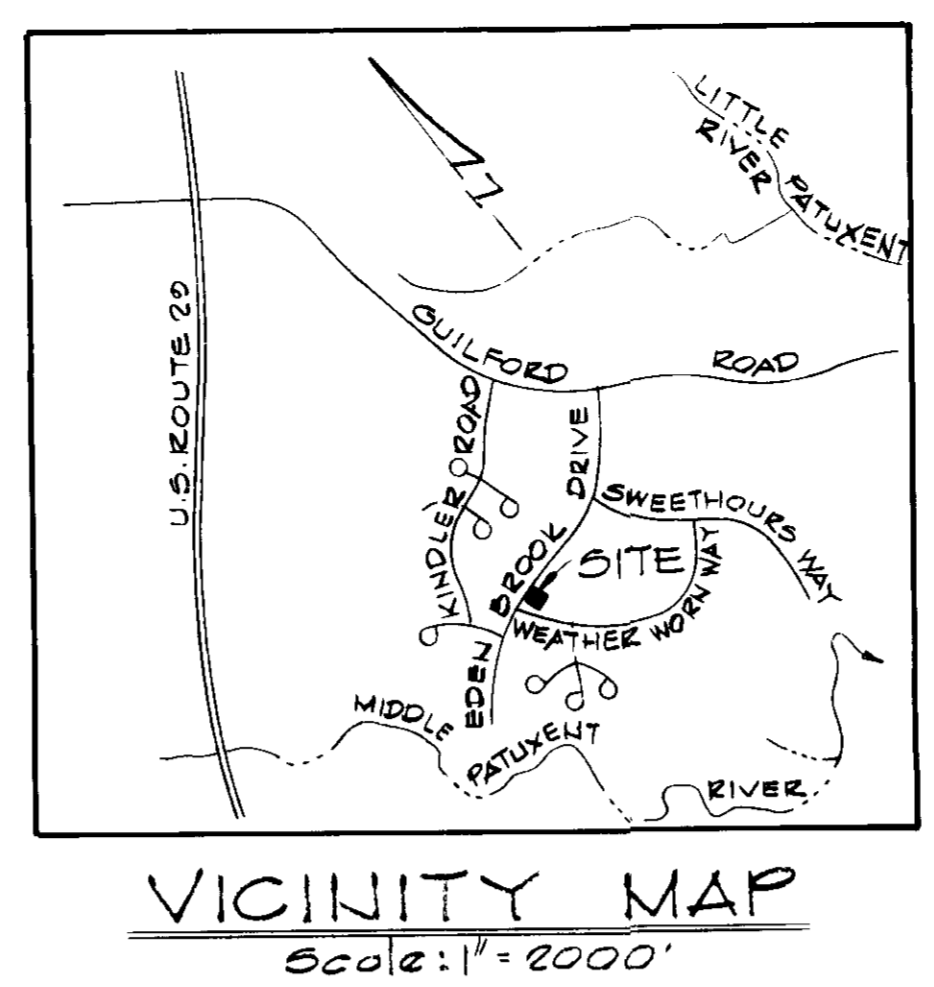
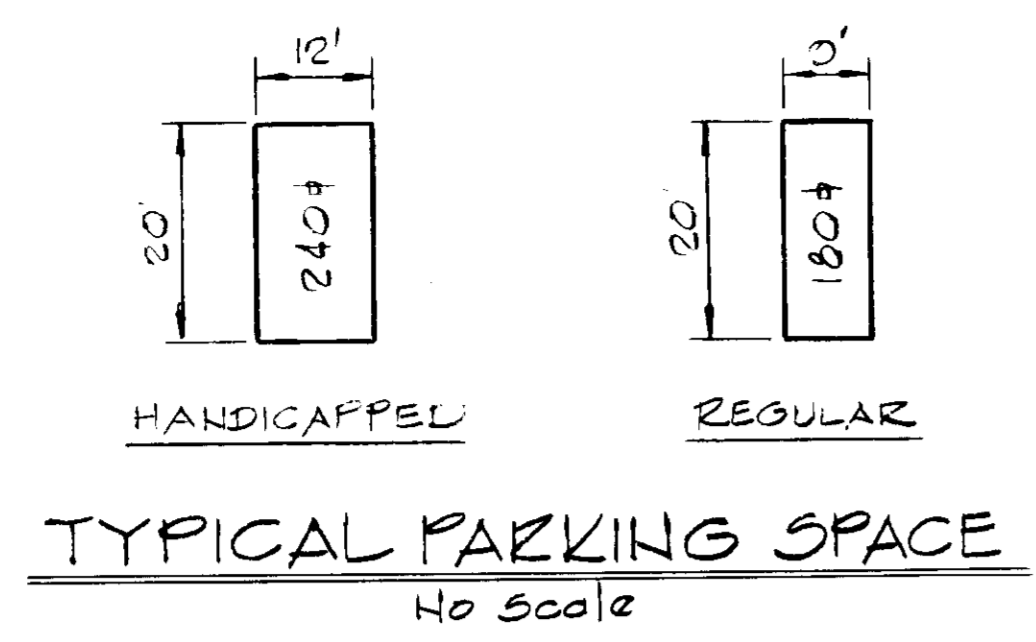
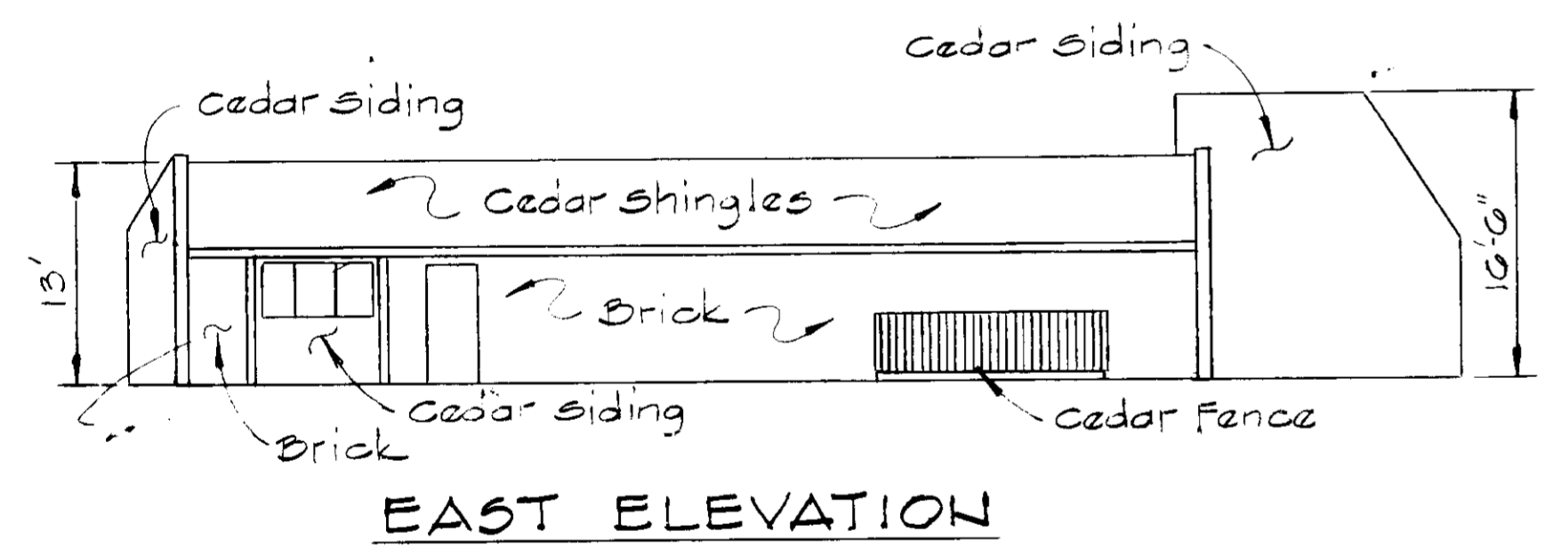
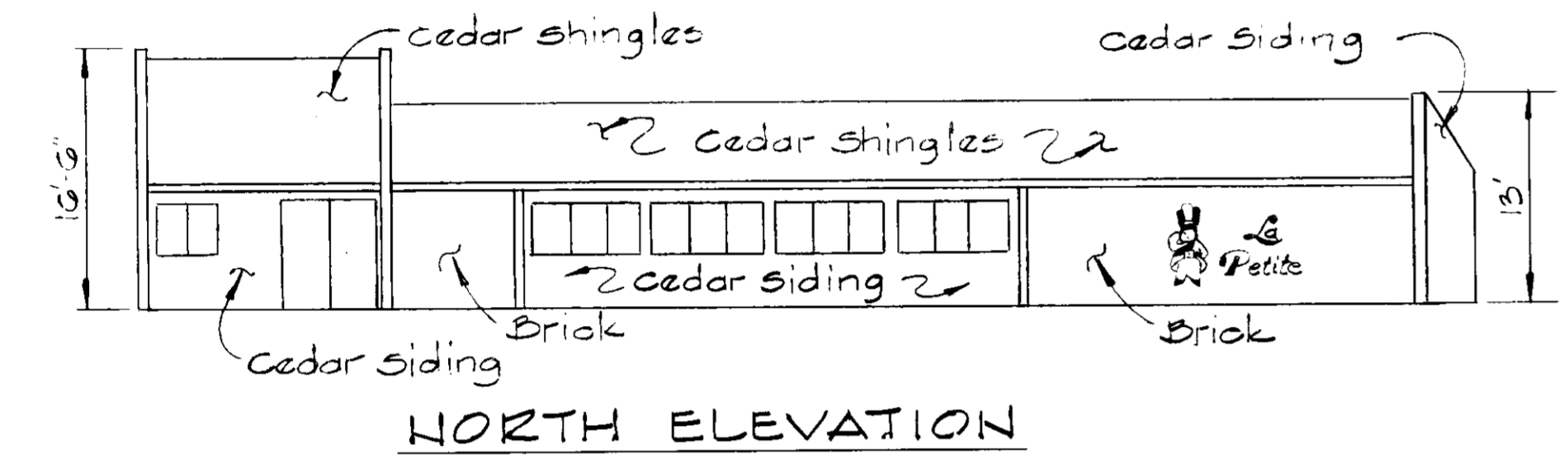


FOR PUBLIC WATER AND PUBLIC SEWERAGE
 HOWARD COUNTY HEALTH DEPARTMENT
 COUNTY HEALTH OFFICER DATE 2-15-85
 APPROVED: HOWARD COUNTY OFFICE OF PLANNING AND ZONING
 PLANNING DIRECTOR DATE 2-19-85
 CHIEF, DIVISION OF LAND DEVELOPMENT AND ZONING ADMINISTRATION DATE 2-19-85
 APPROVED: FOR PUBLIC WATER, PUBLIC SEWER AND STORM DRAINAGE SYSTEMS AND ROADS, HOWARD COUNTY DEPARTMENT OF PUBLIC WORKS
 DIRECTOR DATE 2-14-85
 CHIEF, BUREAU OF ENGINEERING DATE

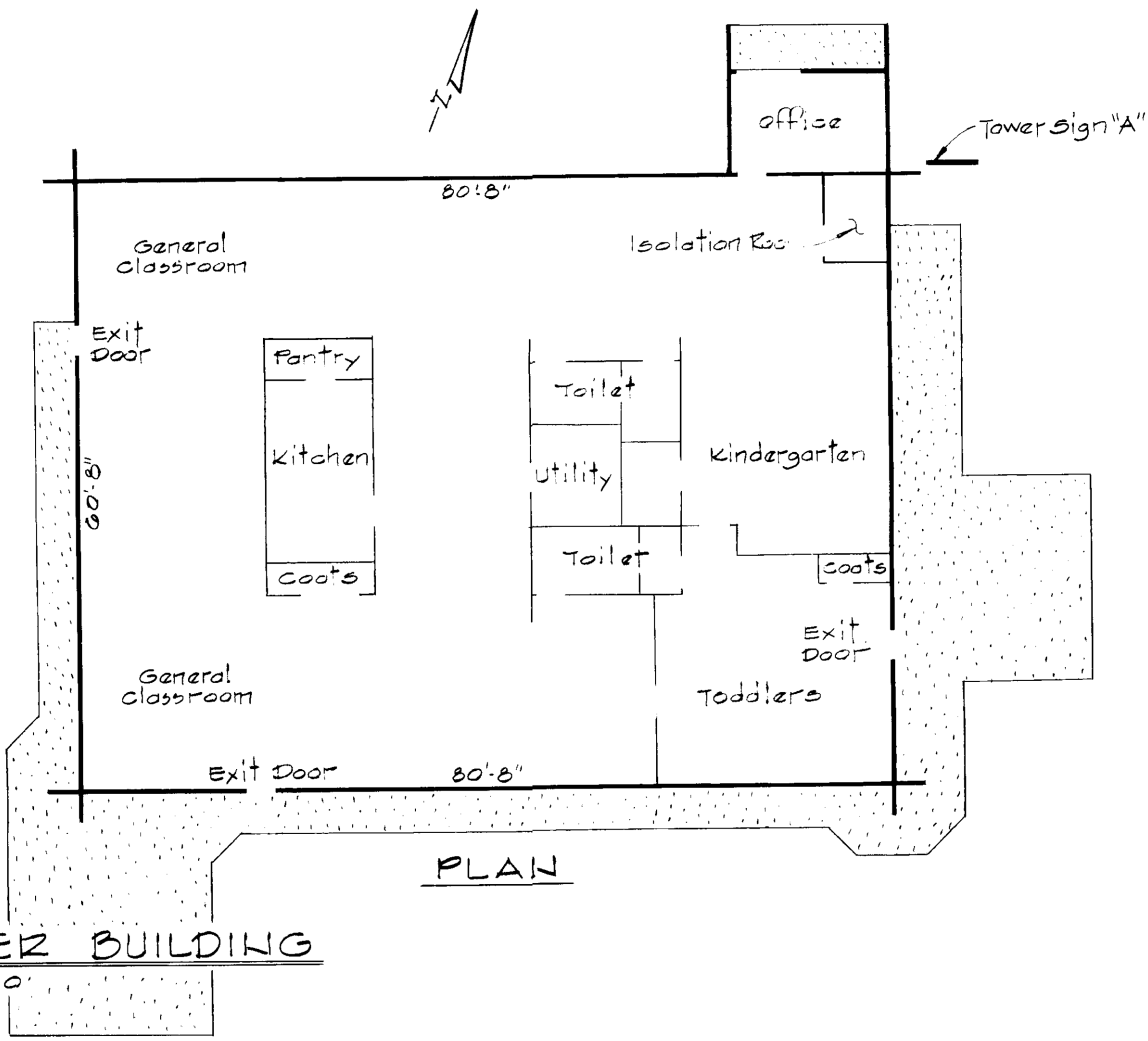


SHEET INDEX	
NO.	DESCRIPTION
1.	TITLE SHEET
2.	GRADING PLAN
3.	MISCELLANEOUS DETAILS
4.	SEDIMENT CONTROL PLAN
5.	SEDIMENT CONTROL DETAILS
6.	LANDSCAPE AND LIGHTING PLAN

SQUARE FOOTAGE SIGN "A"
 "SOLDIER" = 16.875
 "LA" = 7.171
 "PETITE" = 12.250
 TOTAL CHILD CARE = 6,000
 TOTAL SQ FOOTAGE = 42,200 SQ. FT.



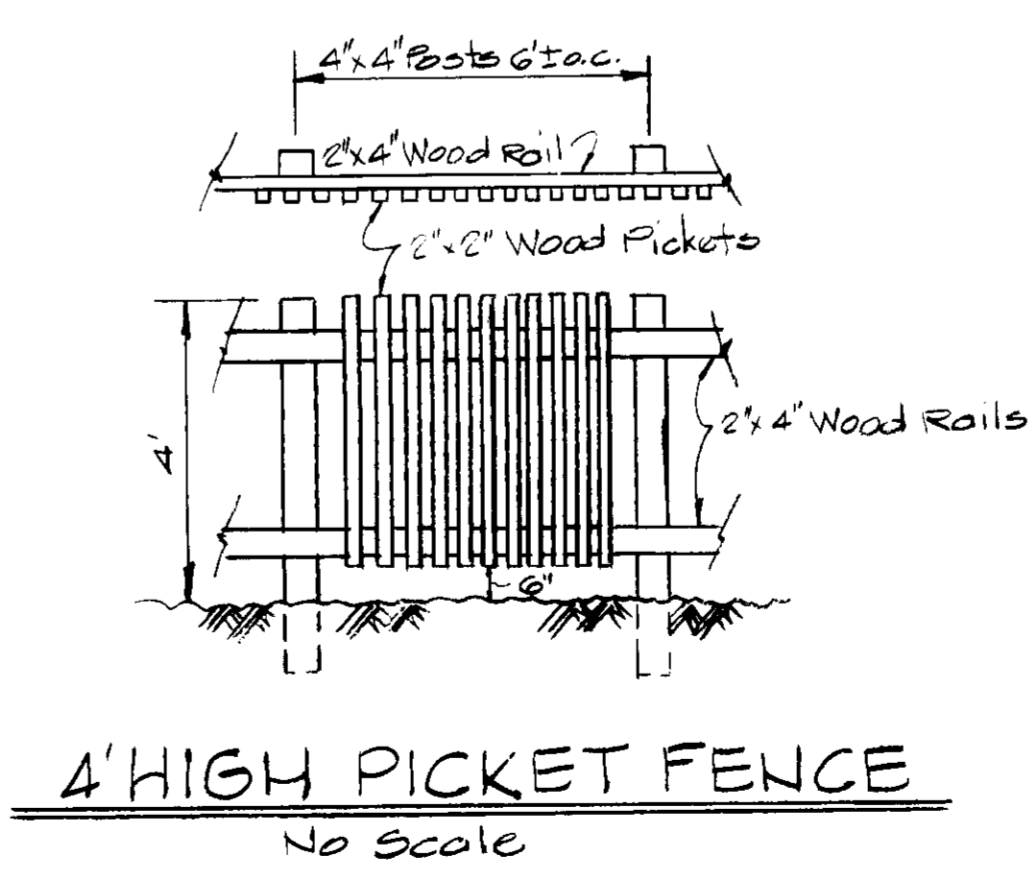
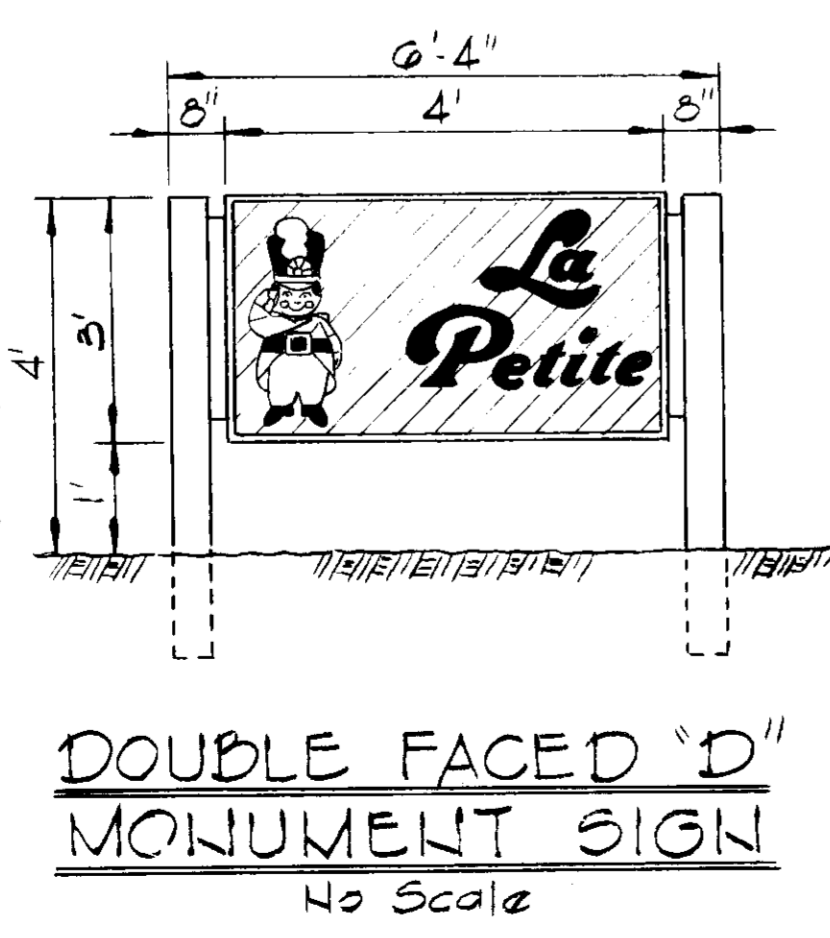
DAY CARE CENTER BUILDING
Scale: 1" = 10'



SITE ANALYSIS
 Existing Zoning - New Town - Employment Center - Commercial
 Final Development Plan - Phase 17B-A-III Part II Plats 3054-A
 Area of Parcel "B-1" - 0.7155 Acres
 Proposed Use - DAY CARE CENTER
 Required Parking - 1 Space / 400+ Usable Floor Area - $\frac{4400}{400} = 11$ Spaces
 * Proposed Parking - 18 Spaces
 Proposed Building Coverage - $3,065 \text{ sq ft} / 21,167 \text{ sq ft} = 14.5\%$
 * Includes 1 Handicap Space

- GENERAL NOTES**
1. Topography taken from aerial survey by MAPS, INC and verified by field survey.
 2. Recording Reference for Parcel B-1 is Plat #5800.
 3. See Architectural Plans for details of proposed buildings.
 4. All site work construction to be done in accordance with Howard County Road Code and Standard Specifications unless otherwise indicated.
 5. Public water and public sewer to be utilized.
 6. Any damage to public right-of-way or paving must be corrected at the developer's expense.
 7. Grades have been established to insure positive drainage.
 8. Stormwater Management has been provided for this site. See Road Construction Drawings for Village of Kings Contrivance, Section 2 Area 3, Phase 2, P-80-09C.
 9. One handicapped parking space shall be placed at each handicapped parking space in accordance with requirements of the Maryland Building Code.

SQUARE FOOTAGE
 SOLDIER = 2,020 SQ. FT.
 "LA" = 1,710 SQ. FT.
 "PETITE" = 2,260 SQ. FT.
 TOTAL SQ FOOTAGE = 7,500 SQ. FT.
 SIGN AREA = 3' x 4' = 12 SQ. FT.



LA PETITE ACADEMY
 OWNER AND DEVELOPER
 CITY CENTER SQUARE
 P.O. BOX 26610
 KANSAS CITY, MO. 64106

WHITMAN, REQUARDT AND ASSOCIATES
 ENGINEERS
 2315 ST. PAUL STREET
 BALTIMORE, MARYLAND

Kenneth A. McCord
 KENNETH A. MCCORD P.E. NO. 1074

APPROVED
 1-9-85
 [Signature]

NO.	DATE	DESCRIPTION OF REVISION
1	1/3/85	Revised as per Planning, DPW & SCS Comments.

COLUMBIA SITE PLANS
 for
 VILLAGE OF KINGS CONTRIVANCE
 SECTION 2 AREA 3
 PARCEL "B-1"
TITLE SHEET
 SHEET 1 OF 6
 ELECTION DISTRICT NO. 6
 HOWARD COUNTY, MARYLAND

PARCEL 54
 TAX MAP 42
 DATE: 11/16/84
 SCALE: AS SHOWN

FOR PUBLIC WATER AND PUBLIC
SEWER SYSTEMS, HOWARD COUNTY HEALTH DEPARTMENT

John W. Boyd, M.D., P.E. 2-15-85
COUNTY HEALTH OFFICER DATE

APPROVED: HOWARD COUNTY OFFICE OF
PLANNING AND ZONING

Donald Hamilton 2-19-85
PLANNING DIRECTOR DATE

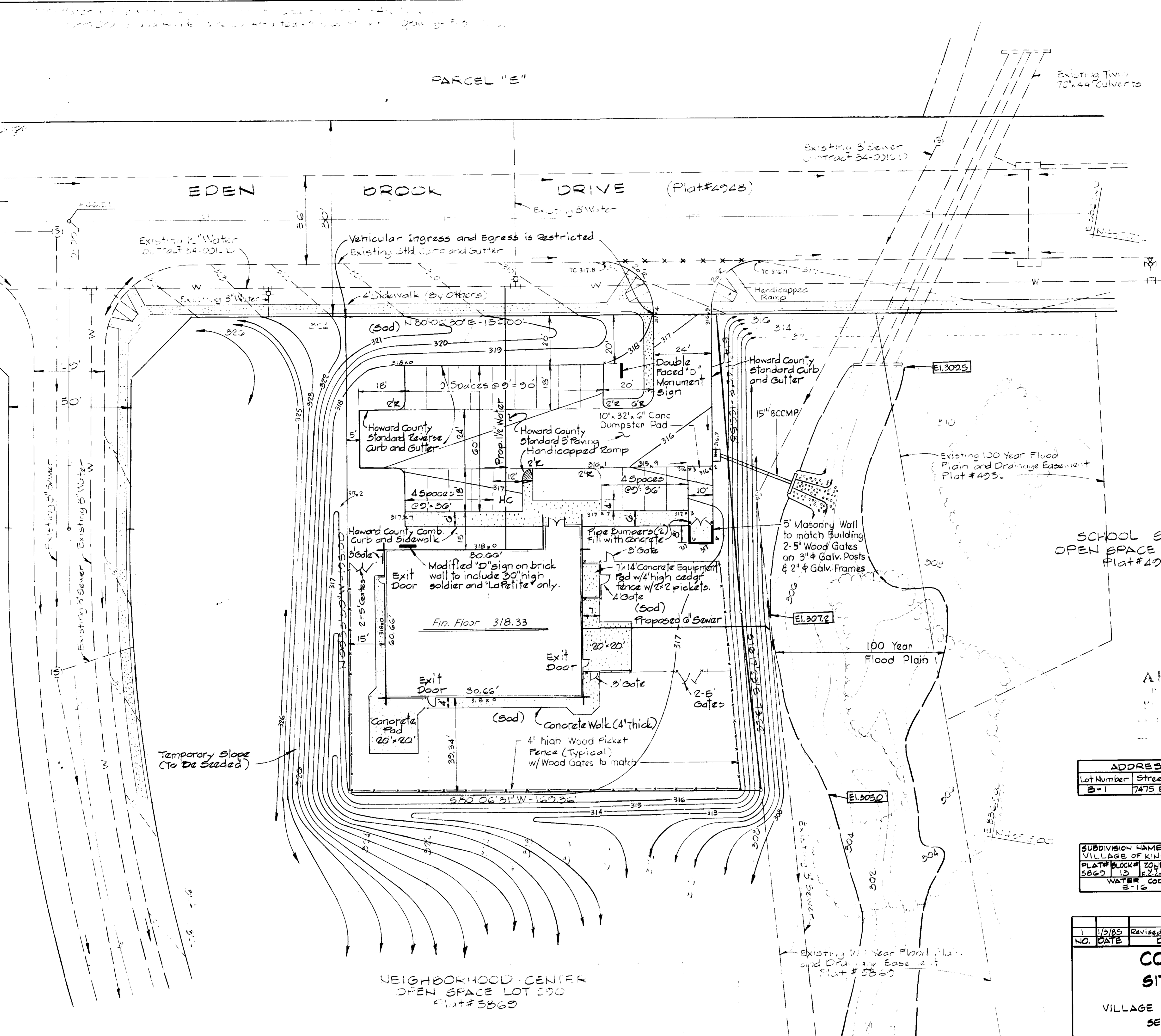
John W. Muddiman 2-19-85
CHIEF, DIVISION OF LAND DEVELOPMENT
AND ZONING ADMINISTRATION DATE

APPROVED FOR PUBLIC WATER, PUBLIC SEWER AND
STORM DRAINAGE SYSTEMS AND ROADS, HOWARD
COUNTY DEPARTMENT OF PUBLIC WORKS

John E. Nalley 3-14-85
DIRECTOR DATE

CHIEF, BUREAU OF ENGINEERING 2-13-85
DATE

WEATHER WORN WAY



- LEGEND**
- 330--- Existing Contours (2' Interval)
 - 330- Proposed Contours (1' Interval)
 - F.F. 000.0 Proposed Finished Floor Elevation
 - 318.0 Proposed Spot Elevation
 - Existing Tree Line
 - TC/BC Top Curb - Bottom Curb
 - Concrete Walks and Pads
 - Existing Curb (To Be Removed)
 - Painted Lines
 - 7" Concrete Curb and Gutter
 - Reserved for Handicapped Persons (Indicated)
 - Handicapped Sign
 - Building Entrance
 - 100 Year Flood Plain Elevation

LA PETITE ACADEMY
OWNER AND DEVELOPER
CITY CENTER SQUARE
P.O. BOX 26610
KANSAS CITY, MO. 64126

WHITMAN, REQUARDT AND ASSOCIATES
ENGINEERS
2315 ST. PAUL STREET
BALTIMORE, MARYLAND

Kenneth A. McCord
KENNETH A. MCCORD P.E. NO. 1074

ADDRESS CHART

Lot Number	Street Address
B-1	7475 EDEN BROOK DRIVE

SUBDIVISION NAME	SEC./AREA	LOT#
VILLAGE OF KINGS CONTRIVANCE	2/3	B-1
PLAT# BLOCK# ZONE TAX/ZONE MAP/ELEC. DIST. CENSUS TR.	5862 13 2/3 45 24 5002	
WATER CODE	SEWER CODE	
E-16	644000	

NO.	DATE	REVISIONS PER PLANNING, DPW & SEC COMMENTS.	DESCRIPTION OF REVISION
1	1/5/85	Revised as per Planning, DPW & Secs Comments.	

COLUMBIA SITE PLANS
for
VILLAGE OF KINGS CONTRIVANCE
SECTION 2 AREA 3
PARCEL "B-1"
GRADING PLAN
SHEET 2 OF 6
ELECTION DISTRICT NO. 6
HOWARD COUNTY, MARYLAND
DATE: 11/16/84 SCALE: 1"=20'

PARCEL 54
TAX MAP 42

SDP-85-94.

EL FOR PUBLIC WATER AND PUBLIC SEWERAGE
5, HOWARD COUNTY HEALTH DEPARTMENT

COUNTY HEALTH OFFICER DATE

APPROVED: HOWARD COUNTY OFFICE OF PLANNING AND ZONING

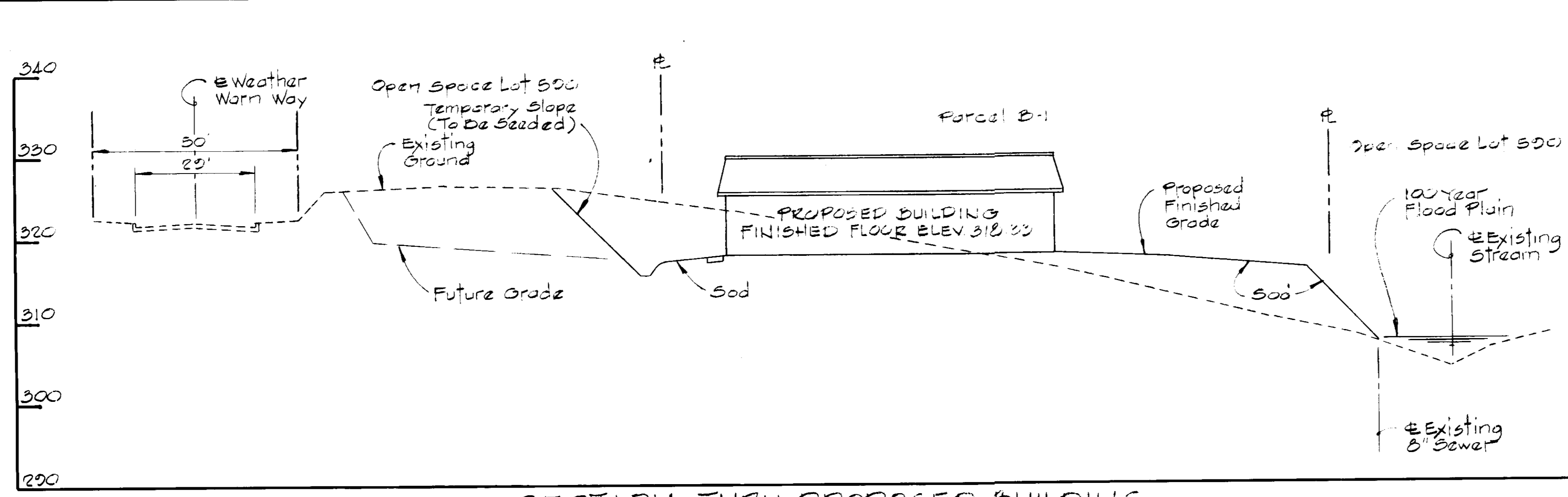
PLANNING DIRECTOR DATE 2-19-85

CHIEF, DIVISION OF LAND DEVELOPMENT AND ZONING ADMINISTRATION DATE 2-19-85

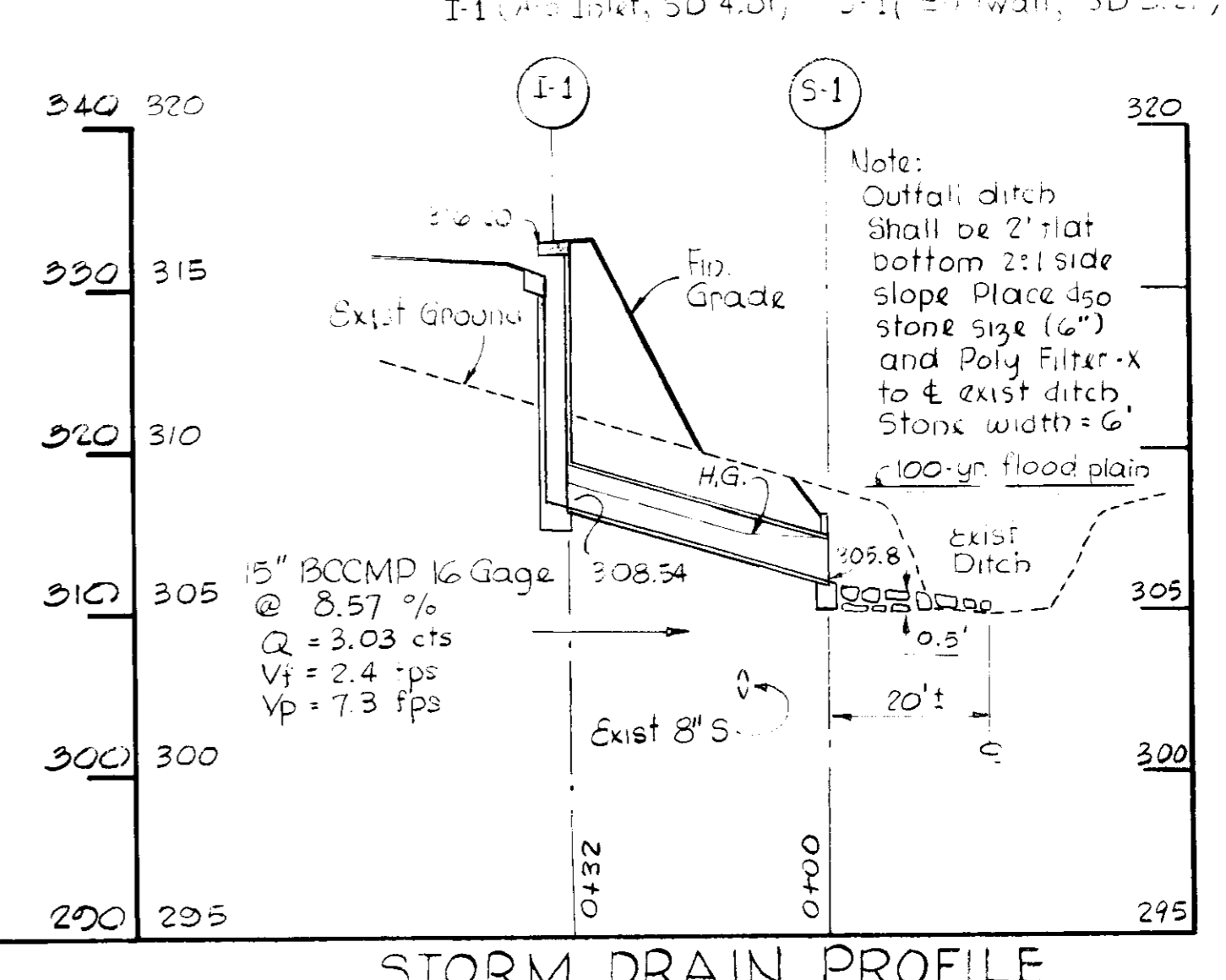
APPROVED FOR PUBLIC WATER, PUBLIC SEWER AND STORM DRAINAGE SYSTEMS AND ROADS, HOWARD COUNTY DEPARTMENT OF PUBLIC WORKS.

DIRECTOR DATE 2-14-85

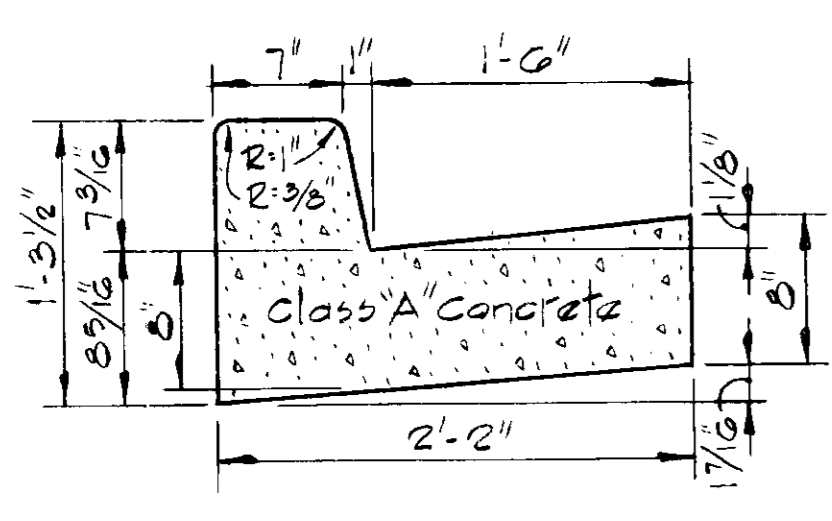
CHIEF, BUREAU OF ENGINEERING DATE 2-13-85



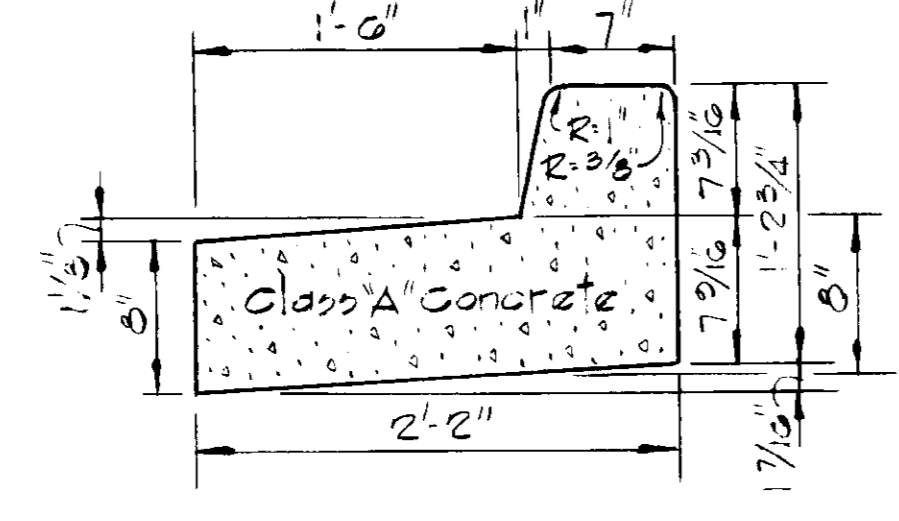
SECTION THRU PROPOSED BUILDING
Scale: Hor. 1" = 20'
Vert. 1" = 10'



STORM DRAIN PROFILE
Scale: Hor. 1" = 20'
Vert. 1" = 5'



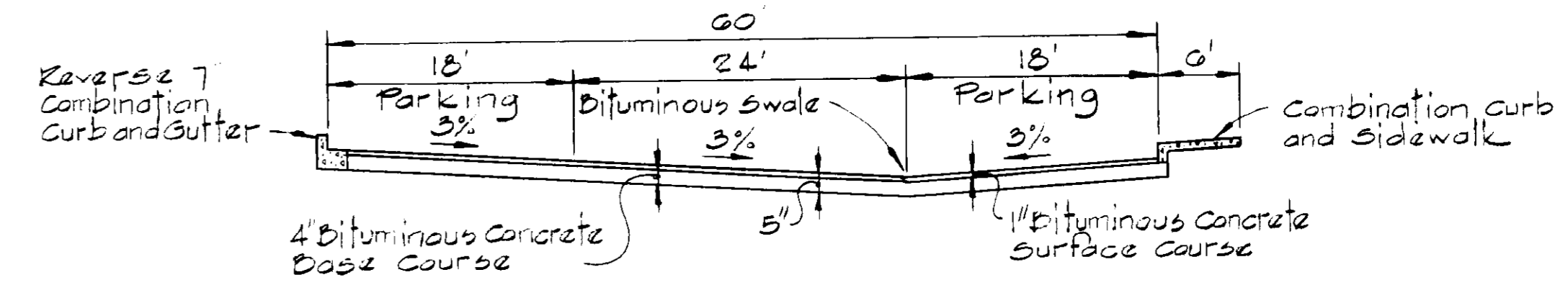
STANDARD 7" COMBINATION CURB AND GUTTER
No Scale



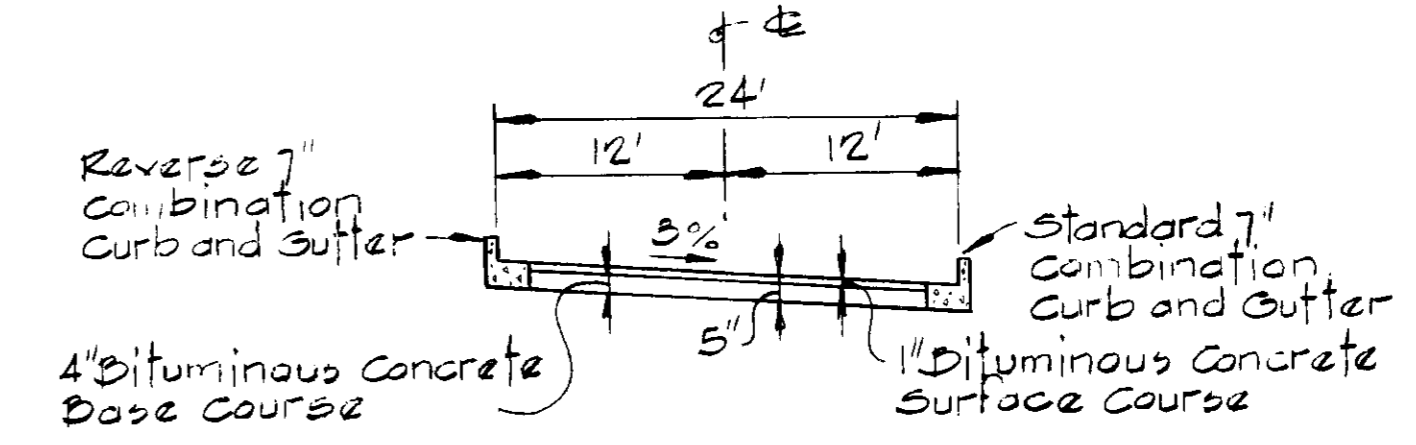
REVERSE 7" COMBINATION CURB AND GUTTER
No Scale

ROADWAY CONSTRUCTION NOTES

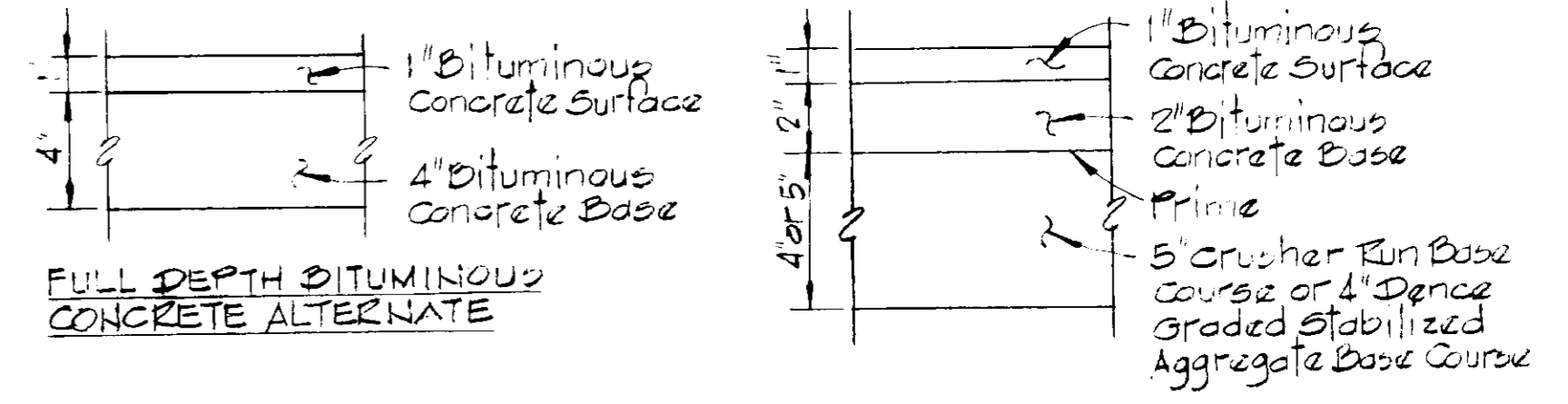
- All materials and construction methods shall be in accordance with the Howard County Standard Specifications and Details for construction.
- Standard 7" Combination Curb and Gutter shall be in accordance with County Standard Detail 2-3.01.
- Paving (5") shall be in accordance with County Standard Detail 2-2.01 (Paving Section P-1).
- Sidewalks shall be in accordance with County Standard Detail 2-3.05.
- Base will be primed in accordance with Article 33.04 of the Howard County Standard Specifications.
- Tack coat is required in accordance with the Howard County Standard Specifications.
- Granular Base Alternate may be substituted at the option of the Developer.



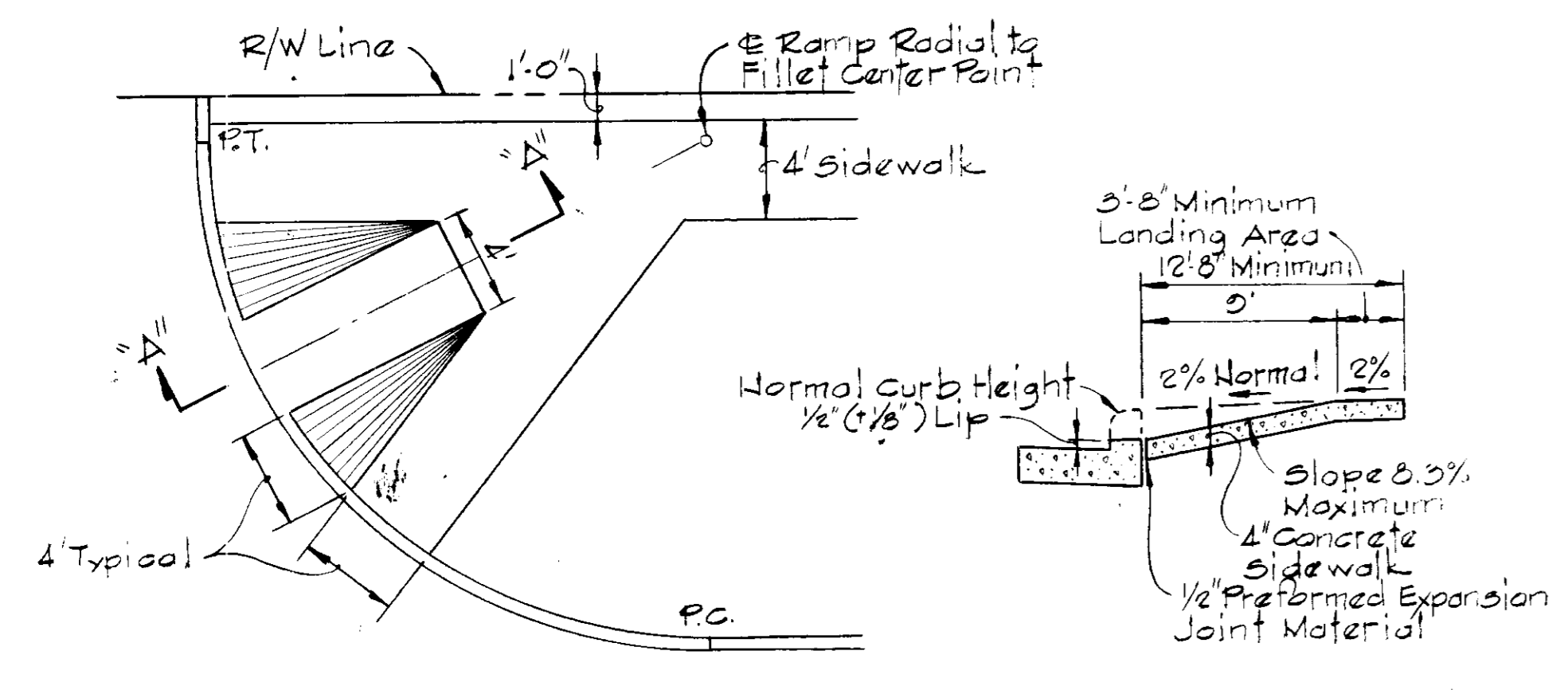
TYPICAL SECTION-PRIVATE PARKING
No Scale



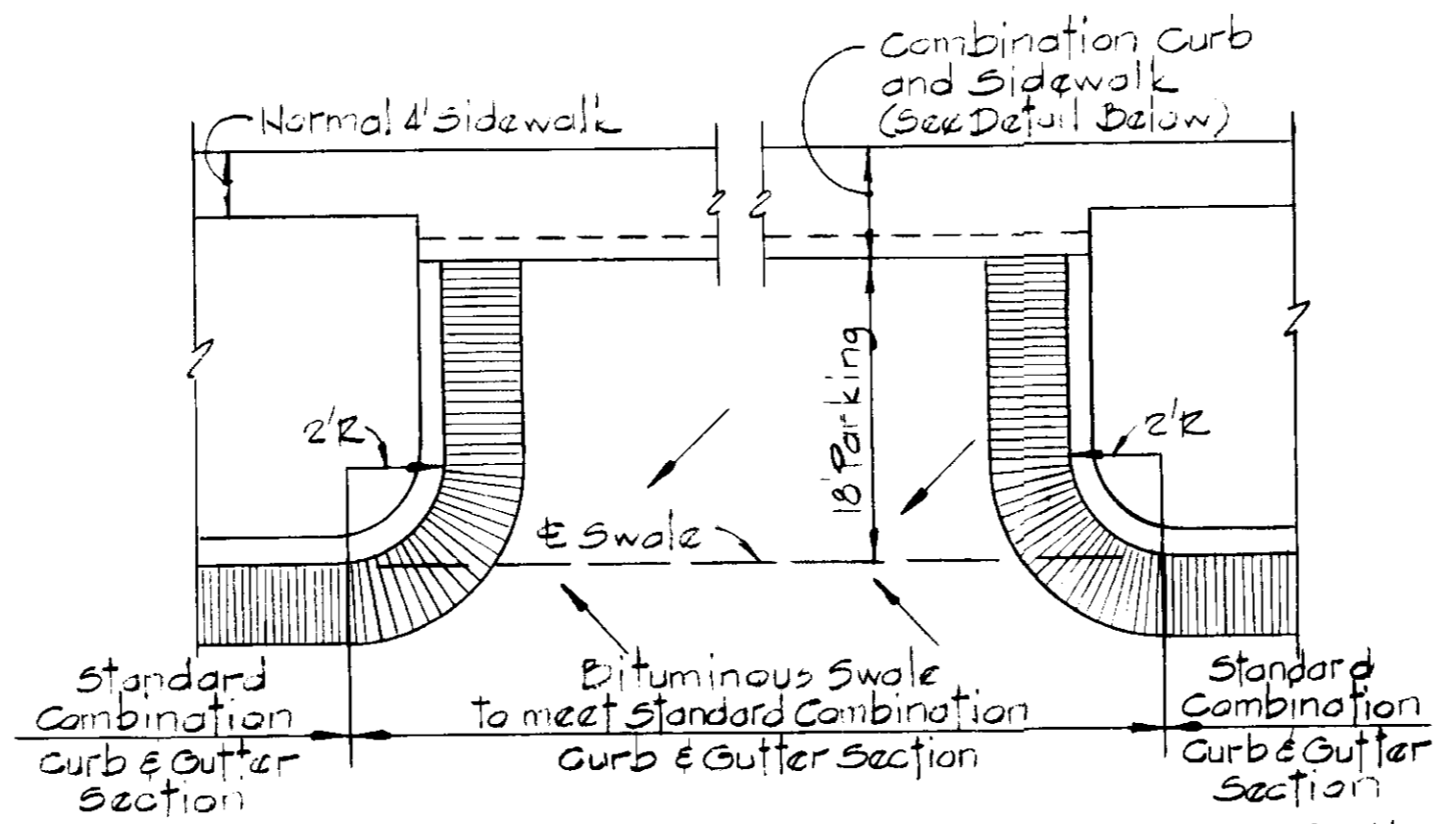
TYPICAL SECTION-PRIVATE ROAD
No Scale



PAVING DETAILS
No Scale



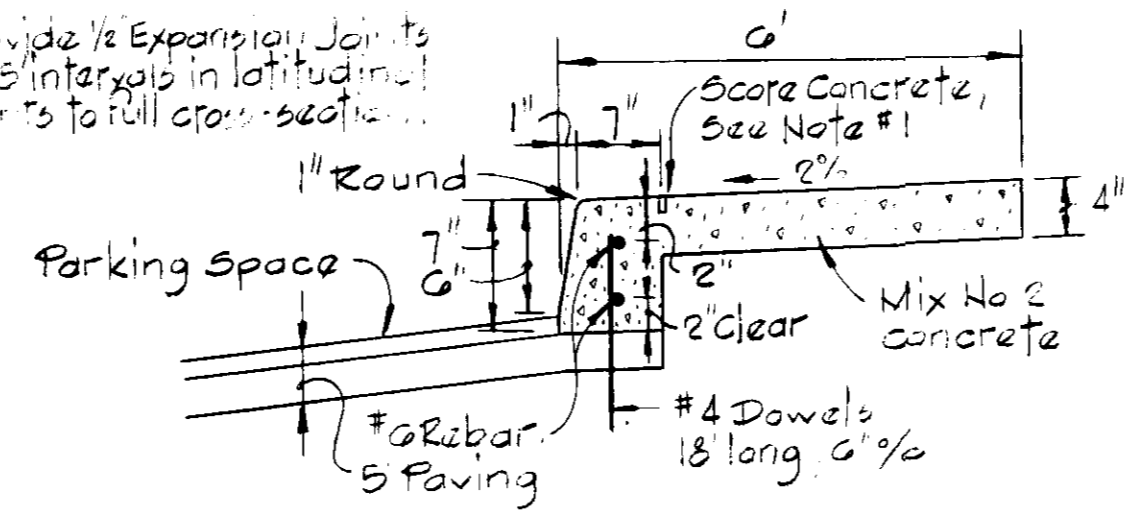
PLAN WHEEL CHAIR RAMP DETAIL
No Scale



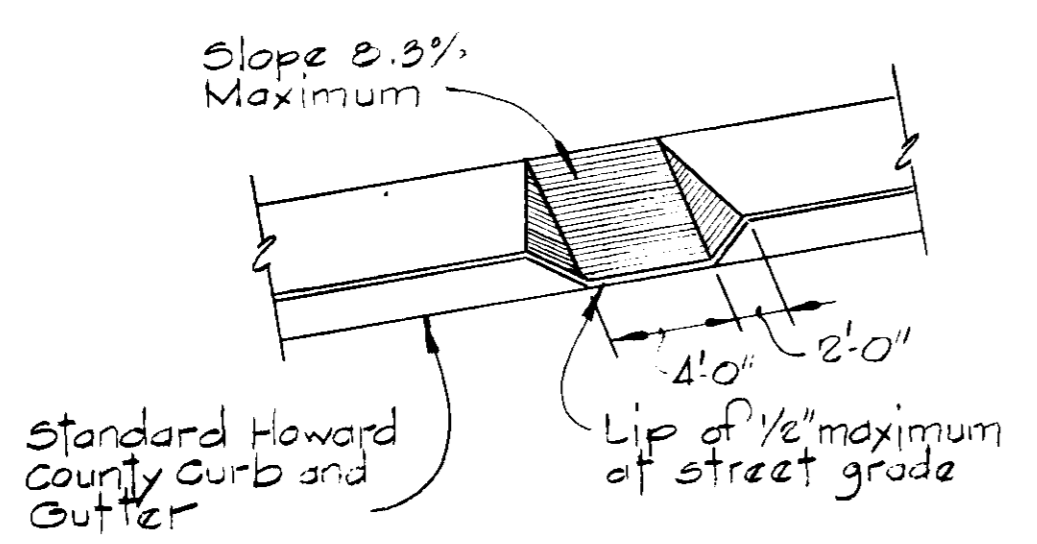
CURB GUTTER TRANSITION DETAIL
No Scale

Note: Longitudinal joint between sidewalk and curb shall be continuous and to a depth of 1/4 the sidewalk thickness or 1\"/>

Provide 1/2 Expansion Joints at 15' intervals in longitudinal joints to full cross-section.



MONOLITHIC CURB AND SIDEWALK PRIVATE PARKING AREA
No Scale



CURB CUT FOR HANDICAPPED
No Scale

LA PETITE ACADEMY
OWNER AND DEVELOPER
CITY CENTER SQUARE
P.O. BOX 22610
KANSAS CITY, MO. 64106

WHITMAN, REQUARDT AND ASSOCIATES
ENGINEERS
2315 ST. PAUL STREET
BALTIMORE, MARYLAND

Kenneth A. McCord P.E. NO. 1074

1-9-85

NO.	DATE	DESCRIPTION OF REVISION
1	1/3/85	Revised as per Planning, DPW & SCS Comments.

COLUMBIA SITE PLANS
for
VILLAGE OF KINGS CONTRIVANCE
SECTION 2 AREA 3
PARCEL 15-11

MISCELLANEOUS DETAILS
SHEET 3 OF 6

ELECTION DISTRICT NO. 6
HOWARD COUNTY, MARYLAND

DATE: 11/16/84 SCALE: AS SHOWN

PARCEL 54
TAX MAP 42

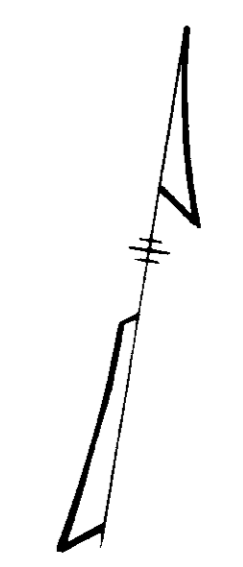
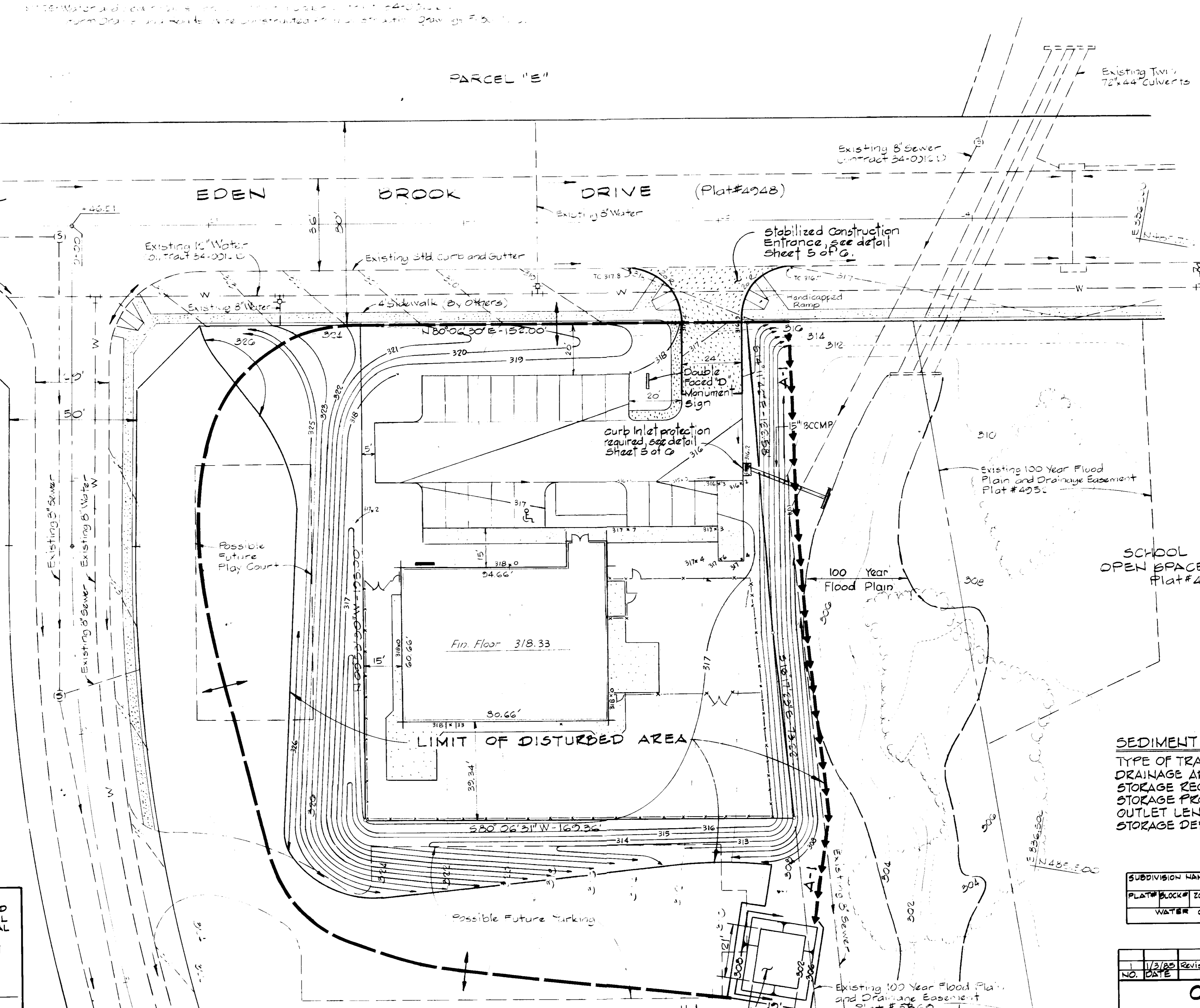
APPROVED FOR PUBLIC WATER AND PUBLIC
SEWER SYSTEMS HOWARD COUNTY HEALTH DEPARTMENT
John M. Cook M.D. P.E. 2-15-85
COUNTY HEALTH OFFICER DATE

APPROVED HOWARD COUNTY OFFICE OF
PLANNING AND ZONING
Thomas G. Loehr 2-19-85
PLANNING DIRECTOR DATE
John W. Muscalano 2-19-85
CHIEF, DIVISION OF LAND DEVELOPMENT AND
ZONING ADMINISTRATION

APPROVED FOR PUBLIC WATER, PUBLIC SEWER AND
STORM DRAINAGE SYSTEMS AND ROADS, HOWARD
COUNTY DEPARTMENT OF PUBLIC WORKS
Walter E. Nunn 2-16-84
DIRECTOR DATE
CHIEF, BUREAU OF ENGINEERING

THIS DEVELOPMENT PLAN IS
APPROVED FOR SOIL EROSION AND
SEDIMENT CONTROL BY THE
HOWARD SOIL CONSERVATION
DISTRICT.
APPROVED: *Paul J. Miller* 2-8-85
HOWARD SCD DATE

REVIEWED FOR HOWARD SCD AND
MEETS TECHNICAL REQUIREMENTS.
Paul J. Miller 2-8-85
DATE
U.S. SOIL CONSERVATION SERVICE



SCHOOL SITE
OPEN SPACE LOT 303
Plat #495c

APPROVED
PLANNING AND ZONING
OFFICE OF HOWARD COUNTY
DATE 1-9-85

SEDIMENT TRAP DESIGN DATA
TYPE OF TRAP - GRASS OUTLET
DRAINAGE AREA - 1.3 ACRES
STORAGE REQUIRED - 1.3 x 67 = 87.1 CY.
STORAGE PROVIDED - 28 CY.
OUTLET LENGTH - 20'
STORAGE DEPTH BELOW OUTLET - 4.5'

SUBDIVISION NAME	SEC./AREA	LOT#
PLAT# BLOCK# ZONE	TAX/ZONE MAP/ELEC. DIST.	CENSUS TR.
WATER CODE		SEWER CODE

NO.	DATE	DESCRIPTION OF REVISION
1	11/3/85	Revised as per Planning, DPW & SCS Comments.

**COLUMBIA
SITE PLANS**
for
VILLAGE OF KINGS CONTRIVANCE
SECTION 2 AREA 3
PARCEL "B-1"
SEDIMENT CONTROL PLAN
SHEET 4 OF 6
ELECTION DISTRICT NO. 6
HOWARD COUNTY, MARYLAND
DATE: 11/16/84 SCALE: 1"=20'

CERTIFICATION BY THE ENGINEER
"I CERTIFY THAT THIS PLAN FOR EROSION AND
SEDIMENT CONTROL REPRESENTS A PRACTICAL
AND WORKABLE PLAN BASED ON MY PERSONAL
KNOWLEDGE OF THE SITE CONDITIONS AND
THAT IT WAS PREPARED IN ACCORDANCE WITH
THE REQUIREMENTS OF THE HOWARD
SOIL CONSERVATION DISTRICT."
Kenneth A. McCord 11/16/84
KENNETH A. MCCORD DATE

LA PETITE ACADEMY
OWNER AND DEVELOPER
CITY CENTER SQUARE
P.O. BOX 26610
KANSAS CITY, MO. 64106

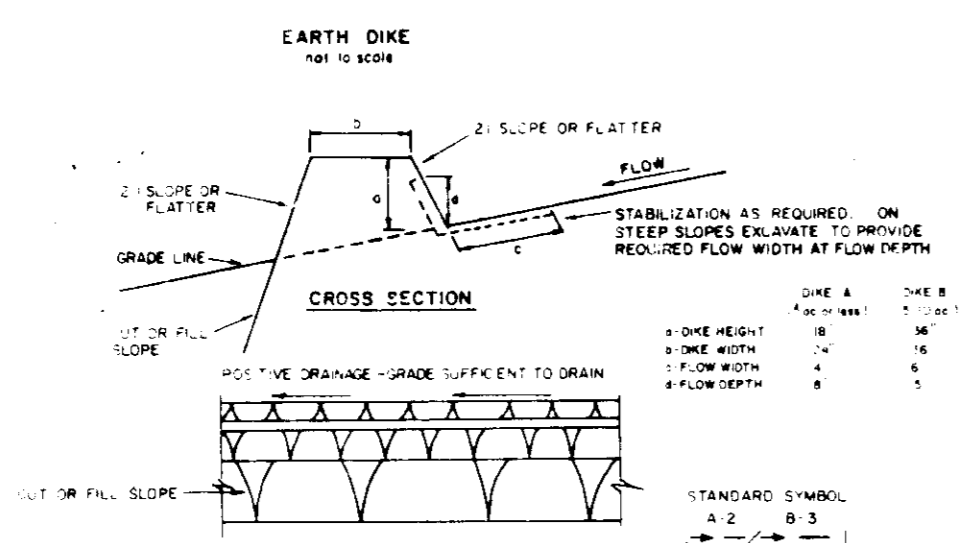
WHITMAN, REQUART AND ASSOCIATES
ENGINEERS
2315 ST. PAUL STREET
BALTIMORE, MARYLAND
Kenneth A. McCord
KENNETH A. MCCORD P.E. NO. 1074

CERTIFICATION BY THE DEVELOPER
"I/WE CERTIFY THAT ALL DEVELOPMENT AND
CONSTRUCTION WILL BE DONE ACCORDING TO
THIS PLAN, AND THAT ANY RESPONSIBLE
PERSONNEL INVOLVED IN THE CONSTRUCTION
PROJECT WILL HAVE A CERTIFICATE OF
ATTENDANCE AT A DEPARTMENT OF NATURAL
RESOURCES APPROVED TRAINING PROGRAM
FOR THE CONTROL OF SEDIMENT AND
EROSION BEFORE BEGINNING THE PROJECT."
Thomas G. Loehr 11/16/84
THOMAS G. LOEHR DATE

PARCEL 54
TAX MAP 42

SDP-85-94.

FOR PUBLIC WATER AND PUBLIC SEWERAGE
 M.D. - HOWARD COUNTY HEALTH DEPARTMENT
 COUNTY HEALTH OFFICER DATE
 APPROVED HOWARD COUNTY OFFICE OF PLANNING AND ZONING
 PLANNING DIRECTOR DATE
 CHIEF DIVISION OF LAND DEVELOPMENT AND ZONING ADMINISTRATION
 APPROVED PUBLIC WATER, PUBLIC SEWER AND STORM DRAINAGE SYSTEMS AND ROADS, HOWARD COUNTY DEPARTMENT OF PUBLIC WORKS
 DIRECTOR DATE
 CHIEF BUREAU OF ENGINEERING DATE
 THIS DEVELOPMENT PLAN IS APPROVED FOR SOIL EROSION AND SEDIMENT CONTROL BY THE HOWARD SOIL CONSERVATION DISTRICT.
 APPROVED DATE
 HOWARD S.C.D. DATE
 REVIEWED FOR HOWARD S.C.D. AND MEETS TECHNICAL REQUIREMENTS
 DATE
 U.S. SOIL CONSERVATION DISTRICT



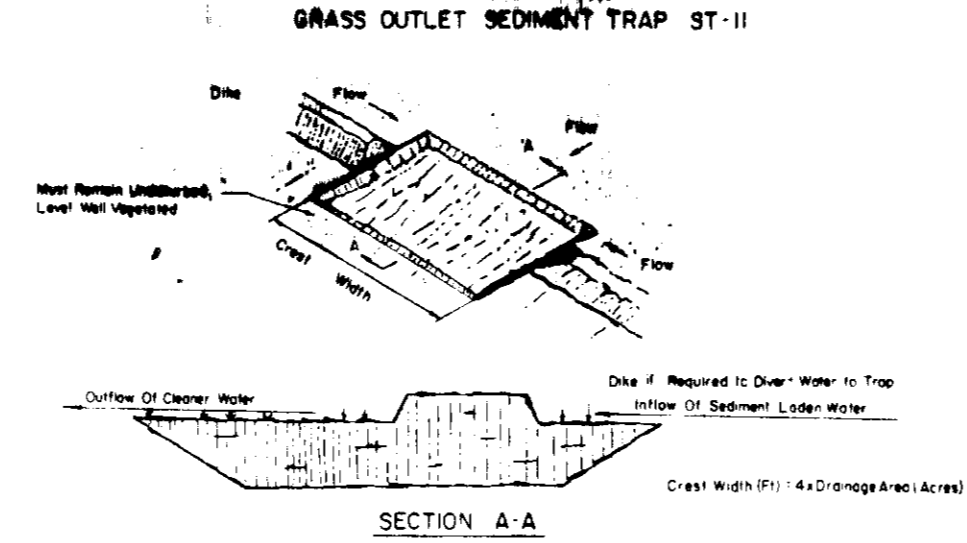
CONSTRUCTION SPECIFICATIONS

- ALL DIKES SHALL BE CONSTRUCTED BY SCREW-DRIVING EQUIPMENT.
- DIKES SHALL HAVE POSITIVE DRAINAGE TO AN OUTLET.
- TOP WIDTH MAY BE NARROWER SLOPES MAY BE FLATTER IF DESIGNED TO FACILITATE CROSSING BY CONSTRUCTION TRAFFIC.
- FIELD LOCATION SHALL BE CHOSEN AS NEEDED TO UTILIZE A STABILIZED SAFE OUTLET.
- EARTH DIKES SHALL HAVE AN OUTLET THAT FUNCTIONS WITH A MINIMUM OF EROSION. DIKES SHALL BE CONSTRUCTED TO A SEDIMENT TRAPPING DEVICE SUCH AS A SEDIMENT TRAP OR SEDIMENT BASIN WHERE EITHER THE DIKE CHANNEL OR THE DRAINAGE AREA ABOVE THE DIKE ARE NOT STABILIZED.
- IN ACCORDANCE WITH STANDARD SPECIFICATIONS FOR SEDIMENT TRAPPING DEVICES, (A) IN SEEDING SEASON, (B) FLOW CHANNEL, AS PER THE OWNER'S PLAN.

PLAN CHANNEL STABILIZATION

TYPE OF CHANNEL	CHANNEL SIZE	LINE A	LINE B
1	8-12 IN.	SEED AND STRAW MULCH	SEED AND STRAW MULCH
2	12-18 IN.	SEED AND STRAW MULCH	SEED AND STRAW MULCH
3	18-24 IN.	SEED WITH LIME, OR SOIL	LINED RIP-RAP 4-8"
4	24-36 IN.	LINED RIP-RAP 4-8"	ENGINEERING DESIGN

A. STONE TO BE 2 INCH STONE, OR RECYCLED CONCRETE EQUIVALENT, IN A LAYER AT LEAST 3 INCHES IN THICKNESS AND BE PRESSED INTO THE SOIL WITH CONSTRUCTION EQUIPMENT.
 B. RIP-RAP TO BE 4-8 INCHES IN A LAYER AT LEAST 8 INCHES THICKNESS AND PRESSED INTO THE SOIL.
 C. APPROVED EQUIVALENTS CAN BE SUBSTITUTED FOR ANY OF THE ABOVE MATERIALS.
 D. PERIODIC INSPECTION AND REQUIRED MAINTENANCE MUST BE PROVIDED AFTER EACH RAIN EVENT.

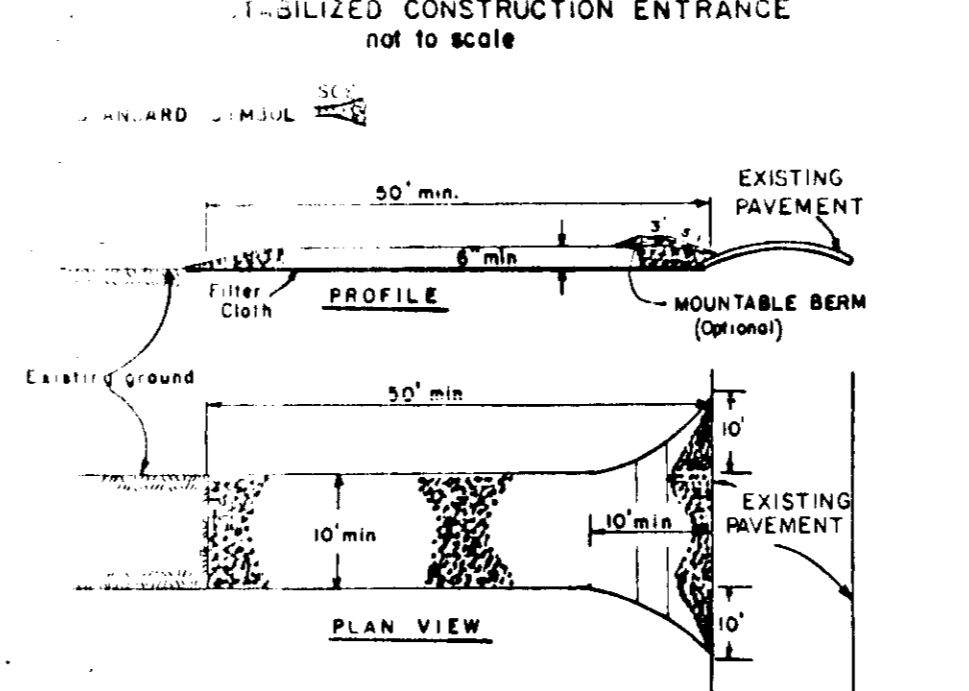


EXCAVATED GRASS OUTLET SEDIMENT TRAP

CONSTRUCTION SPECIFICATION FOR ST-II

- Volume of sediment storage shall be 1800 cubic feet per acre of contributory drainage area.
- Minimum clear width shall be 4 X Drainage Area.
- Sediment shall be removed and trap restored to its original dimensions when the sediment has accumulated to 1/2 the design depth of the trap. Removed sediment shall be deposited in a suitable area and in such a manner that it will not erode.
- The structure shall be inspected after each rain and repairs made as needed.
- Construction operations shall be carried out in such a manner that erosion and water pollution shall be minimized.
- The sediment trap shall be removed and area stabilized when the remaining drainage area has been properly stabilized.
- All cut slopes shall be 1:1 or flatter.

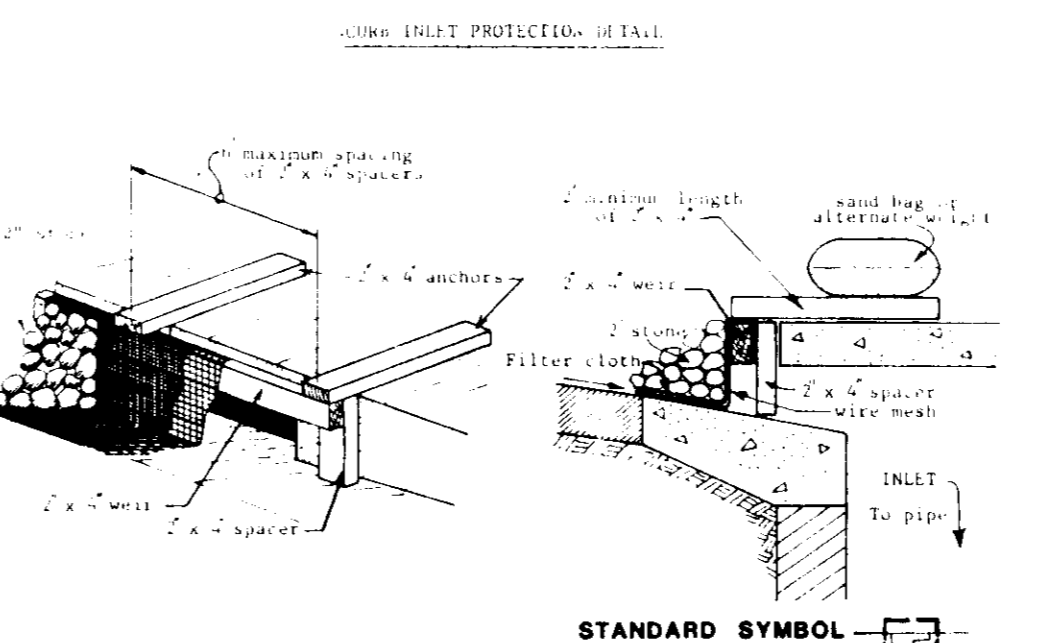
Maximum Drainage Area: 5 Acres



STABILIZED CONSTRUCTION ENTRANCE
 NOT TO SCALE

CONSTRUCTION SPECIFICATIONS

- Entrance Size - See 2" stone, or recycled concrete equivalent.
- Entrance - See 2" stone, or recycled concrete equivalent.
- Entrance - See 2" stone, or recycled concrete equivalent.
- Entrance - See 2" stone, or recycled concrete equivalent.
- Entrance - See 2" stone, or recycled concrete equivalent.
- Entrance - See 2" stone, or recycled concrete equivalent.
- Entrance - See 2" stone, or recycled concrete equivalent.
- Entrance - See 2" stone, or recycled concrete equivalent.
- Entrance - See 2" stone, or recycled concrete equivalent.
- Entrance - See 2" stone, or recycled concrete equivalent.



Curb Inlet Protection

- Attach a continuous piece of wire mesh (30" min. width by throat length plus 4") to the 2" x 4" weir (measuring throat length plus 2") as shown on the standard drawing.
- Place a piece of approved filter cloth (40-85 mesh) of the same dimensions as the wire mesh over the wire mesh and securely attach to the 2" x 4" weir.
- Securely nail the 2" x 4" weir to 9" long vertical spacers to be located between the weir and inlet face (max. 6" apart).
- Place the assembly against the inlet throat and nail (minimum 2" lengths of 2" x 4" to the top of the weir at spacer locations). These 2" x 4" anchors shall extend across the inlet top and be held in place by sandbags or alternate weights.

SEDIMENT CONTROL NOTES

- See Sequence of Construction for this sheet.
- The sediment control measures shall be constructed as shown on these drawings.
- All temporary sediment control devices shall be seeded as specified in Notes 4 and 5. All other surfaces to be permanently seeded. See Specifications this sheet.
- The temporary sediment control devices shall be hydrated as follows:
 - Ground Limestone (50 lbs/1000 sq ft)
 - Fertilizer - 10-10-10 (25 lbs/1000 sq ft)
 - Seed - Italian Rye Grass (40 lbs/acre)
- Mulch with straw at the rate of 50 lbs/1000 sq ft or one ton/acre. Anchor with asphalt at the rate of 400 gallons/acre.
- Prior to starting any work, the contractor shall notify Howard County Sediment Control Division at least 24 hours in advance.
- All perimeter controls and slopes 3:1 or steeper must be stabilized within 7 days of initial disturbance with temporary seed and mulch per standards and specifications. All other graded areas on the project site must receive permanent or temporary stabilization within 14 days.
- All sediment traps and basins must be fenced and warning signs posted around their perimeter in accordance with Volume I, Chapter 12 of the Howard County Design Manual, Storm Drainage.

PERMANENT SEEDING NOTES

LIME - 2 tons/acre agricultural ground limestone
 FERTILIZER - 1000 lbs/acre (10-10-10)
 SEED - 100 lbs/acre of the following:
 20% Kentucky Blue Grass, 20% Marion Blue Grass, 35% Creeping Red Fescue, 5% Red Top.
 Mulch Required - Mulch area with straw at the rate of 75 lbs/1000 sq ft or 1.5 tons/acre. Anchor with asphalt at the rate of 400 gallons/acre. Stabilization of slopes steeper than 3:1 shall be planted with crown vetch at the rate of 20 lbs/acre or 0.46 lbs/1000 sq ft and Kentucky 31 Tall Fescue at the rate of 1 lb/1000 sq ft.

SEQUENCE OF CONSTRUCTION

- Obtain Grading Permit.
- Install stabilized construction entrance.
- Clear and grub areas for sediment control facilities only.
- Construct sediment trap and earth dike.
- Stabilize diversion dike with temporary seeding, see specifications this sheet.
- Strip and rough grade limits of construction.
- Construct utilities, inlet protection and proposed building.
- Final grade road and parking area, construct curb and gutter, sidewalks and seed disturbed area with permanent seeding, see specifications this sheet.
- Final road and parking area.
- After grass is established and the contributing drainage area is stabilized the sediment control facilities may be removed.

APPROVED
 PLANNING DIVISION
 OF HOWARD COUNTY
 DATE 1-9-85
 [Signature]

LA PETITE ACADEMY
 OWNER AND DEVELOPER
 CITY CENTER SQUARE
 P.O. BOX 22610
 KANSAS CITY, MO. 64196

WHITMAN, REQUARDT AND ASSOCIATES
 ENGINEERS
 2315 ST. PAUL STREET
 BALTIMORE, MARYLAND

[Signature]
 KENNETH A. MCCORD
 11/16/84

CERTIFICATION BY THE DEVELOPER
 "I/WE CERTIFY THAT ALL DEVELOPMENT AND CONSTRUCTION WILL BE DONE ACCORDING TO THIS PLAN, AND THAT ANY RESPONSIBLE PERSONNEL INVOLVED IN THE CONSTRUCTION PROJECT WILL HAVE A CERTIFICATE OF ATTENDANCE AT A DEPARTMENT OF NATURAL RESOURCES APPROVED TRAINING PROGRAM FOR THE CONTROL OF SEDIMENT AND EROSION BEFORE BEGINNING THE PROJECT."

[Signature]
 THOMAS G. LOEHR
 11/16/84
 DATE

CERTIFICATION BY THE ENGINEER
 "I CERTIFY THAT THIS PLAN FOR EROSION AND SEDIMENT CONTROL REPRESENTS A PRACTICAL AND WORKABLE PLAN BASED ON MY PERSONAL KNOWLEDGE OF THE SITE CONDITIONS AND THAT IT WAS PREPARED IN ACCORDANCE WITH THE REQUIREMENTS OF THE HOWARD SOIL CONSERVATION DISTRICT."

[Signature]
 KENNETH A. MCCORD
 11/16/84
 DATE

NO.	DATE	REVISION
1/3/85		Revised as per Planning, DPW & SCS Comments.

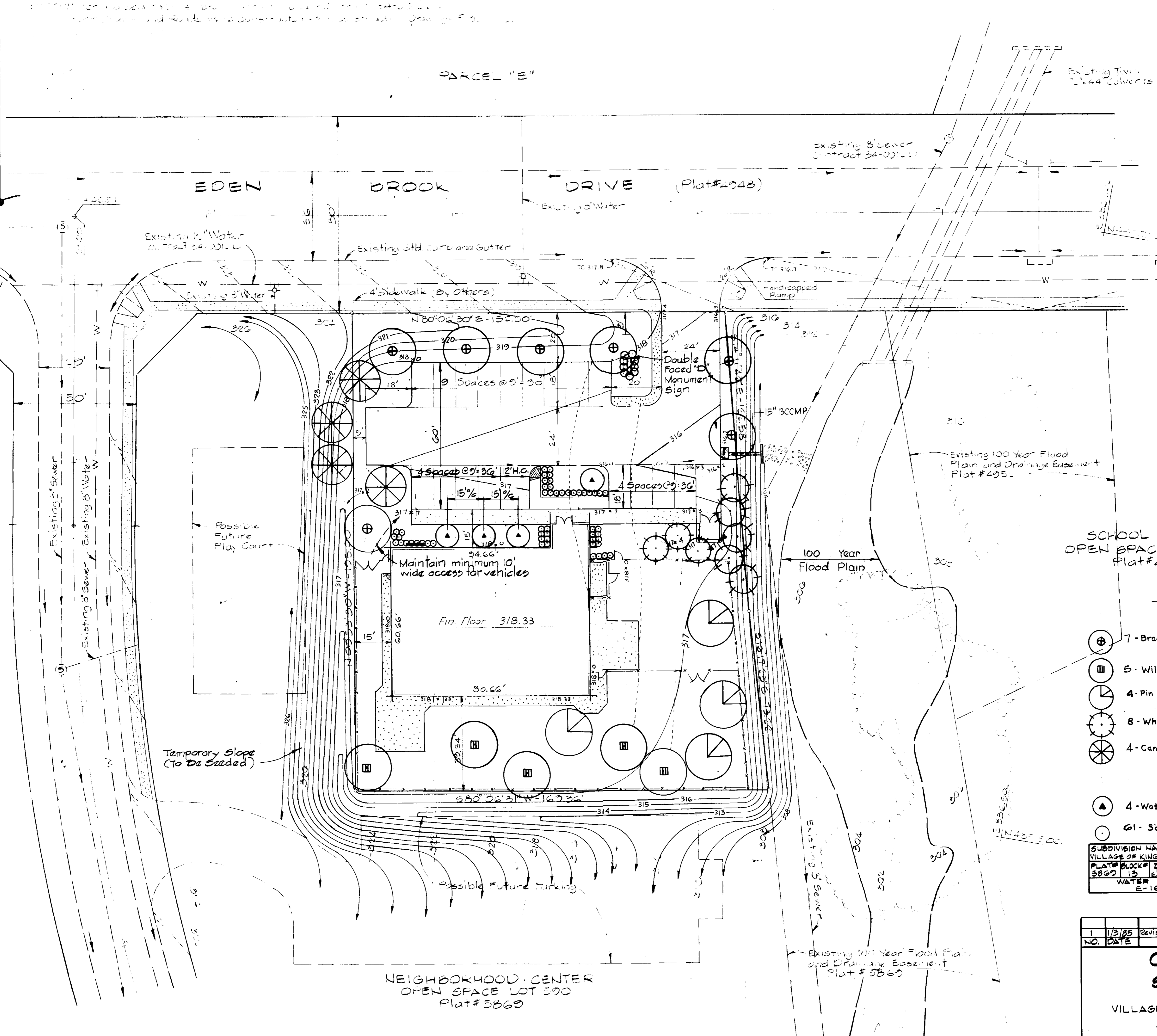
DESCRIPTION OF REVISION

COLUMBIA SITE PLANS
 for
 VILLAGE OF KINGS CONTRIVANCE
 SECTION 2 AREA 3
 PARCEL #B-111
SEDIMENT CONTROL DETAILS
 SHEET 5 OF 6

ELECTION DISTRICT NO. G
 HOWARD COUNTY, MARYLAND
 DATE: 11/16/84
 SCALE: AS SHOWN
 SDP-85-94c

PARCEL 54
 TAX MAP 42

APPROVED FOR PUBLIC WATER AND PUBLIC SEWER SYSTEMS, HOWARD COUNTY HEALTH DEPARTMENT
 COUNTY HEALTH OFFICER DATE
 APPROVED: HOWARD COUNTY OFFICE OF PLANNING AND ZONING
 PLANNING DIRECTOR DATE
 CHIEF, DIVISION OF LAND DEVELOPMENT AND ZONING ADMINISTRATION DATE
 APPROVED FOR PUBLIC WATER, PUBLIC SEWER AND STORM DRAINAGE SYSTEMS AND ROADS, HOWARD COUNTY DEPARTMENT OF PUBLIC WORKS
 DIRECTOR DATE
 CHIEF, BUREAU OF ENGINEERING DATE



APPROVED
 PLANNING BOARD
 OF HOWARD COUNTY
 DATE 1-9-85
[Signature]

SCHOOL SITE
 OPEN SPACE LOT 293
 Plat #4251

PLANT LIST

- 7 - Bradford Pears - 2 1/2" - 3" cal., 12' - 14' HT.
- 5 - Willow Oaks - 2 1/2" - 3" cal., 12' - 14' HT.
- 4 - Pin Oaks - 2 1/2" - 3" cal., 12' to 14' HT.
- 8 - White Pines - 6' - 8' HT.
- 4 - Canadian Hemlocks - 6' - 8' HT.
- 4 - Washington Hawthorns - 6' - 8' HT.
- 61 - Sargents' Junipers - 18' - 24'

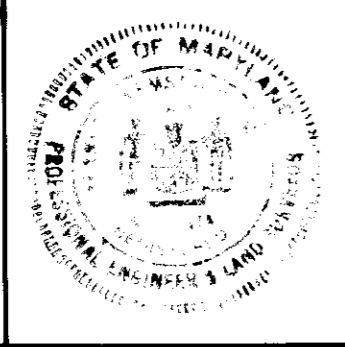
SUBDIVISION NAME	SEC./AREA	LOT#
VILLAGE OF KINGS CONTRIVANCE	2/3	D-1
PLAT# BLOCK# ZONE TAX/ZONE MAP ELEC. DIST. CENSUS TR.	5860 13 12/2000 42	6th 6062
WATER CODE	SEWER CODE	
E-16	6440000	

NO.	DATE	DESCRIPTION OF REVISION
1	1/9/85	Revised as per Planning, DPW & SCS Comments.

COLUMBIA
 SITE PLANS
 for
 VILLAGE OF KINGS CONTRIVANCE
 SECTION 2 AREA 3
 PARCEL "B-1"
 LANDSCAPE AND LIGHTING PLAN
 SHEET G OF G
 ELECTION DISTRICT NO. 6
 HOWARD COUNTY, MARYLAND
 DATE: 11/16/84 SCALE: 1"=20'

LA PETITE ACADEMY
 OWNER AND DEVELOPER
 CITY CENTER SQUARE
 P.O. BOX 26610
 KANSAS CITY, MO. 64106

WHITMAN, REQUARDT AND ASSOCIATES
 ENGINEERS
 2315 ST. PAUL STREET
 BALTIMORE, MARYLAND
[Signature]
 KENNETH A. MCCORD P.E. NO. 1974



PARCEL 54
 TAX MAP 42

SDP-85-94.