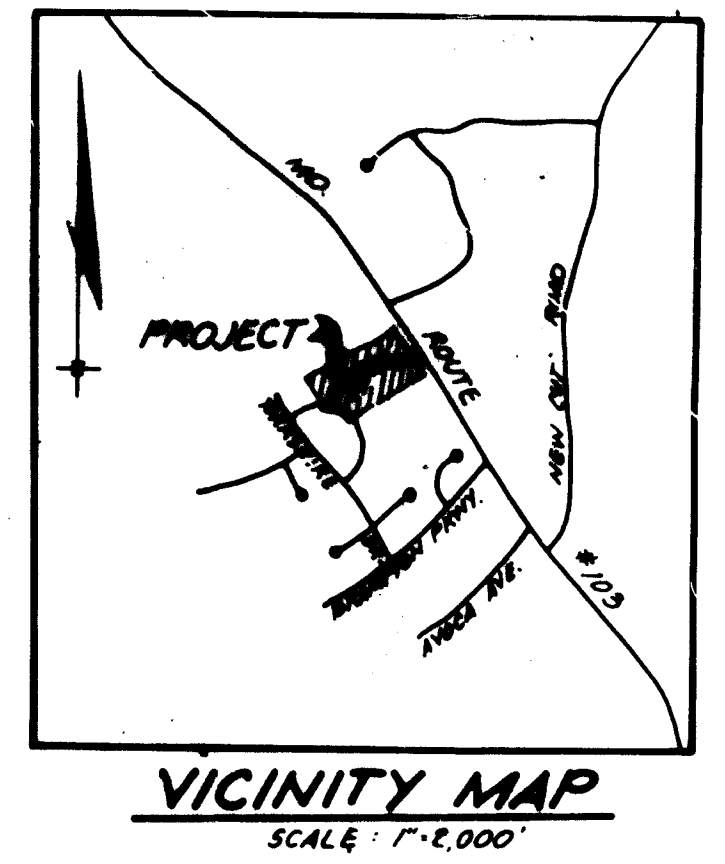
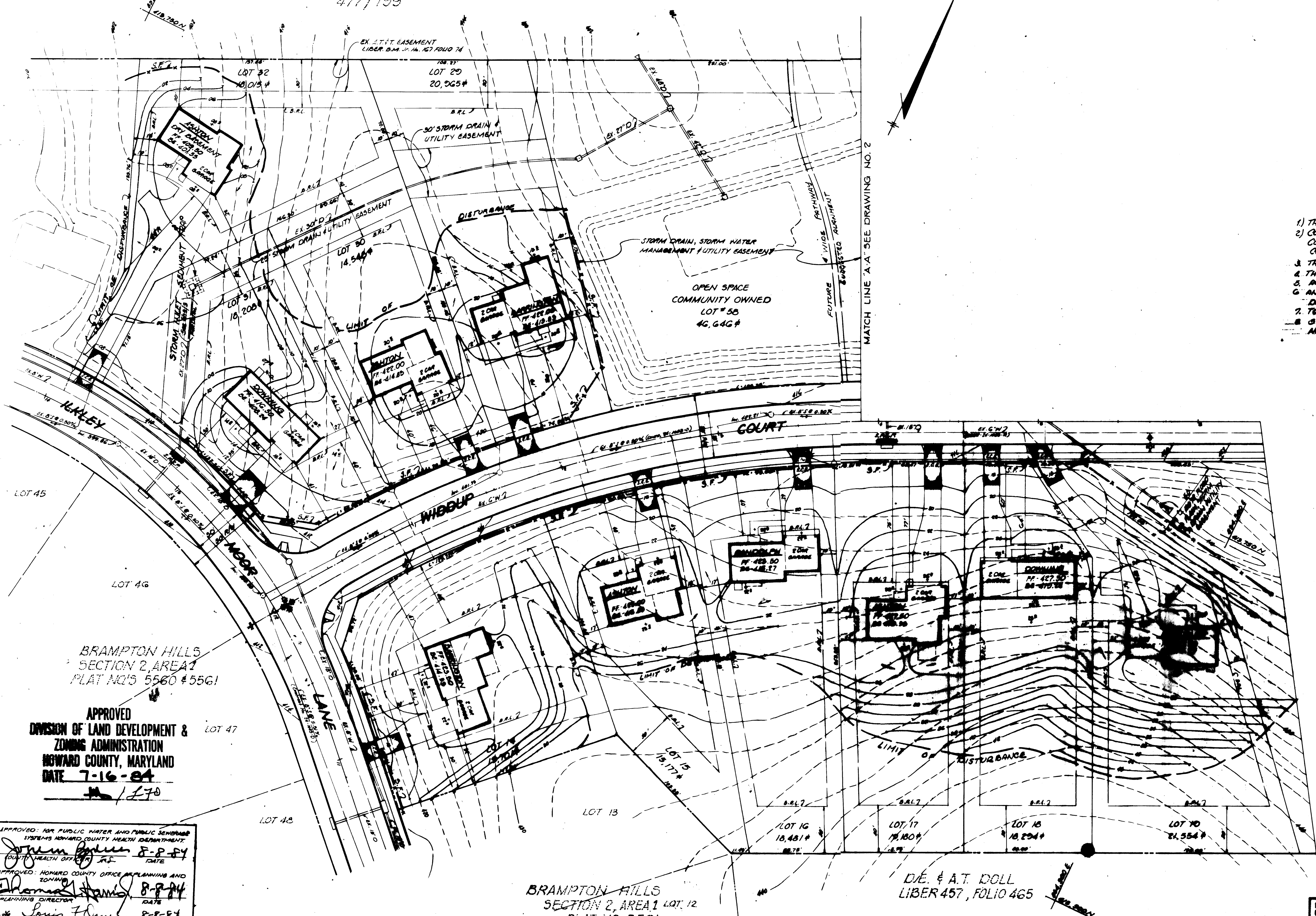


THE LONG GATE VENTURE
477/199



- GENERAL NOTES (See Sheet 3 of 3 for Section Control)
- 1) THE LAND INCLUDED IS ZONED R-20 RECORD PLAT 5561
 - 2) COORDINATE SYSTEM EXTENSIONS MADE FROM THE MARYLAND STATE PLANE COORDINATE SYSTEM BEARINGS REFER TO THE TRUE NORTH AND ARE BASED ON HOWARD COUNTY GEODETIC QUADREY POINT 111, 88, 3884 AND NB 88-3884
 - 3) THE AREA COVERED BY THIS SUBMISSION IS COVERED ON THE MAP # 30 PARCEL # 30
 - 4) THE TOTAL AREA IN THIS PLAN IS 370,000 SQ. FT. (8.5 AC.)
 - 5) ALL ROADS ARE PUBLIC AND EXISTING
 - 6) ANY CHANGE TO EXISTING SHOWN FRONT OF THIS SHALL BE CORRECTED AT THE DEVELOPER'S EXPENSE
 - 7) TOTAL IMPROVED LOT AREA SURVEYED ARE 19
 - 8) STREET TREE NEEDED AS PROVIDED IN ACCORDANCE WITH SECTION 16.14 OF THE HOWARD COUNTY SUBDIVISION REGULATIONS BY THE DEVELOPER



BRAMPTON HILLS
SECTION 2, AREA 1
PLAT NO'S 5560 & 5561

APPROVED
DIVISION OF LAND DEVELOPMENT &
ZONING ADMINISTRATION
HOWARD COUNTY, MARYLAND
DATE 7-16-84

APPROVED FOR PUBLIC WATER AND PUBLIC SEWERAGE SYSTEMS HOWARD COUNTY HEALTH DEPARTMENT
John Jones 8-8-84
APPROVED: HOWARD COUNTY OFFICE OF PLANNING AND ZONING
Thomas Stamps 8-8-84
APPROVED: DIVISION OF LAND DEVELOPMENT AND ZONING ADMINISTRATION
Louis F. Neuman 8-8-84
APPROVED: FOR PUBLIC WATER AND PUBLIC SEWERAGE, STORM DRAINAGE SYSTEMS AND PUBLIC ROADS HOWARD COUNTY DEPARTMENT OF PUBLIC WORKS
Walter F. Neuman 8-16-84
DIRECTOR
Walter F. Neuman 8-16-84
CHIEF BUREAU OF ENGINEERING

REVIEWED FOR HOWARD S.C.O. AND MEETS TECHNICAL REQUIREMENTS
Robert M. Nelson 8-2-84
U.S. SOIL CONSERVATION SERVICE

THIS DEVELOPMENT PLAN IS APPROVED FOR SOIL EROSION AND SEDIMENT CONTROL BY THE HOWARD SOIL CONSERVATION DISTRICT
Stephen S. Miller 8-2-84
APPROVED

BRAMPTON HILLS
SECTION 2, AREA 1 LOT 12
PLAT NO. 5561

DEVELOPER'S/BUILDER'S CERTIFICATE
I/WE CERTIFY THAT ALL DEVELOPMENT AND CONSTRUCTION WILL BE DONE ACCORDING TO THIS PLAN OF DEVELOPMENT AND PLAN FOR EROSION AND SEDIMENT CONTROL AND THAT ALL RESPONSIBLE PERSONS INVOLVED IN THE CONSTRUCTION PROJECT WILL HAVE A CERTIFICATE OF ATTENDANCE AT A DEPT. OF NATURAL RESOURCES APPROVED TRAINING PROGRAM FOR THE CONTROL OF SEDIMENT AND EROSION CONTROL BEFORE BEGINNING THE PROJECT. I ALSO AUTHORIZE PERIODIC ON SITE INSPECTION BY THE HOWARD SOIL CONSERVATION DISTRICT OR THEIR AUTHORIZED AGENTS AS DEEMED NECESSARY.
Fred [Signature] 7/30/84
SIGNATURE OF DEVELOPER/BUILDER

ENGINEER'S CERTIFICATE
I CERTIFY THAT THIS PLAN FOR EROSION AND SEDIMENT CONTROL REPRESENTS A PRACTICAL AND WORKABLE PLAN BASED ON MY PERSONAL KNOWLEDGE OF SITE CONDITIONS AND THAT IT WAS PREPARED IN ACCORDANCE WITH THE REQUIREMENTS OF THE HOWARD SOIL CONSERVATION DISTRICT.
Walter Park 7/30/84
LAND SURVEYOR # 5550



ADDRESS CHART

LOT NO.	STREET ADDRESS
14	6706 TUXLEY MOOR CIRCLE
15	6706 WIDDOW COURT
16	6710
17	6714
18	6718
19	6722
20	6726
21	6730
22	6734
23	6738
24	6742
25	6746
26	6750
27	6754
28	6758
29	6762
30	6766
31	6770 TUXLEY MOOR CIRCLE
32	6774
33	6778
34	6782
35	6786
36	6790
37	6794
38	6798
39	6802
40	6806
41	6810
42	6814
43	6818
44	6822
45	6826
46	6830
47	6834
48	6838
49	6842
50	6846
51	6850
52	6854
53	6858
54	6862
55	6866
56	6870
57	6874
58	6878
59	6882
60	6886
61	6890
62	6894
63	6898
64	6902
65	6906
66	6910
67	6914
68	6918
69	6922
70	6926
71	6930
72	6934
73	6938
74	6942
75	6946
76	6950
77	6954
78	6958
79	6962
80	6966
81	6970
82	6974
83	6978
84	6982
85	6986
86	6990
87	6994
88	6998
89	7002
90	7006
91	7010
92	7014
93	7018
94	7022
95	7026
96	7030
97	7034
98	7038
99	7042
100	7046

SUBDIVISION NAME: BRAMPTON HILLS
PLAT NO./BLK/SEC: 5561/7/A-20
MAP NO.: 5561-7-20
DATE: 8-16-84

LAND DESIGN ASSOCIATES
116 EAST JOPPA ROAD
TOWSON, MARYLAND 21284
(301) 281-8312

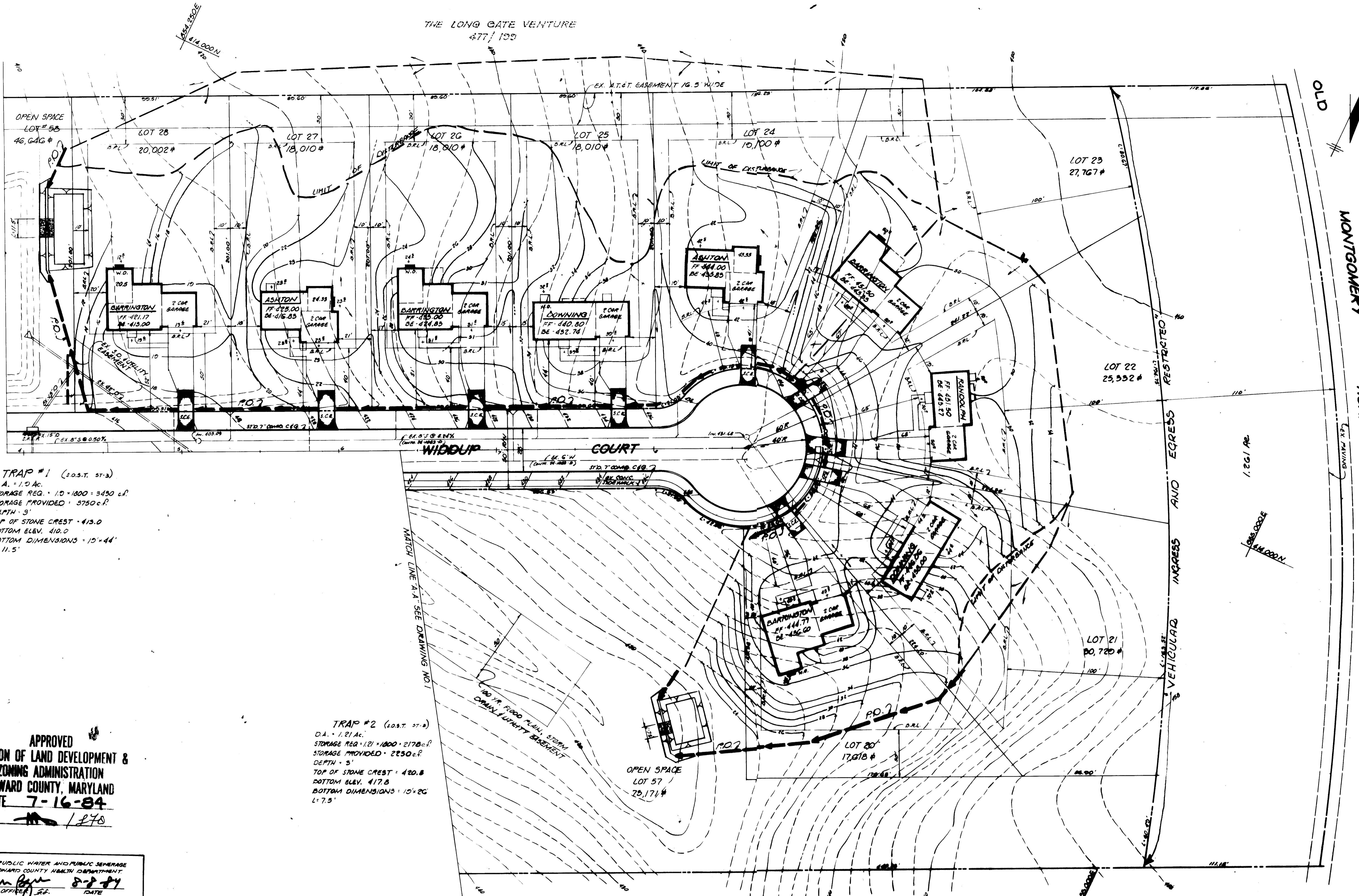
SECTION 2, AREA 1
BRAMPTON HILLS
SECTION 2, AREA 1
LOTS 12 THRU 32

2ND ELECTION DISTRICT
HOWARD COUNTY, MARYLAND

FOR: BRADLEY BOWEN, INC.
6918 JONAH'S ROAD
BETHESDA, MD 20817

SCALE: 1"=50'
DRAWING: 1 OF 3
JOB NO.:
SHEET NO.:

THE LONG GATE VENTURE
477/100



TRAP #1 (S.O.S.T. ST-3)
D.A. = 1.9 AC.
STORAGE REQ. 10' x 1800' = 3450 c.f.
STORAGE PROVIDED = 3750 c.f.
DEPTH = 5'
TOP OF STONE CREST = 415.0
BOTTOM ELEV. 410.0
BOTTOM DIMENSIONS = 15' x 44'
L: 11.5'

TRAP #2 (S.O.S.T. ST-2)
D.A. = 1.21 AC.
STORAGE REQ. 121' x 1800' = 2178 c.f.
STORAGE PROVIDED = 2250 c.f.
DEPTH = 5'
TOP OF STONE CREST = 420.8
BOTTOM ELEV. 417.8
BOTTOM DIMENSIONS = 15' x 26'
L: 7.5'

APPROVED
DIVISION OF LAND DEVELOPMENT &
ZONING ADMINISTRATION
HOWARD COUNTY, MARYLAND
DATE 7-16-84
1270

APPROVED FOR PUBLIC WATER AND PUBLIC SEWERAGE SYSTEMS HOWARD COUNTY HEALTH DEPARTMENT
City Health Officer
8-2-84
APPROVED HOWARD COUNTY OFFICE OF PLANNING AND ZONING
Planning Director
8-8-84
APPROVED FOR PUBLIC WATER AND PUBLIC SEWERAGE SYSTEMS AND PUBLIC ROADS HOWARD COUNTY DEPARTMENT OF PUBLIC WORKS
Director
8-6-84
REVIEWED FOR HOWARD S.C.D. AND MEETS TECHNICAL REQUIREMENTS
8-2-84
U.S. SOIL CONSERVATION SERVICE

THIS DEVELOPMENT PLAN IS APPROVED FOR SOIL EROSION AND SEDIMENT CONTROL BY THE HOWARD SOIL CONSERVATION DISTRICT
8-2-84

DEVELOPER'S / BUILDER'S CERTIFICATE
I HEREBY CERTIFY THAT ALL DEVELOPMENT AND CONSTRUCTION WILL BE DONE ACCORDING TO THIS PLAN OF DEVELOPMENT AND PLAN FOR EROSION AND SEDIMENT CONTROL AND THAT ALL RESPONSIBLE PERSONS INVOLVED IN THE CONSTRUCTION PROJECT WILL HAVE A CERTIFICATE OF ATTENDANCE AT A DEPT. OF NATURAL RESOURCES APPROVED TRAINING PROGRAM FOR THE CONTROL OF SEDIMENT AND EROSION CONTROL BEFORE BEGINNING THE PROJECT. I ALSO AUTHORIZE PERIODIC ON SITE INSPECTION BY THE HOWARD SOIL CONSERVATION DISTRICT OF THEIR AUTHORIZED AGENTS AS DEEMED NECESSARY.
7/30/84

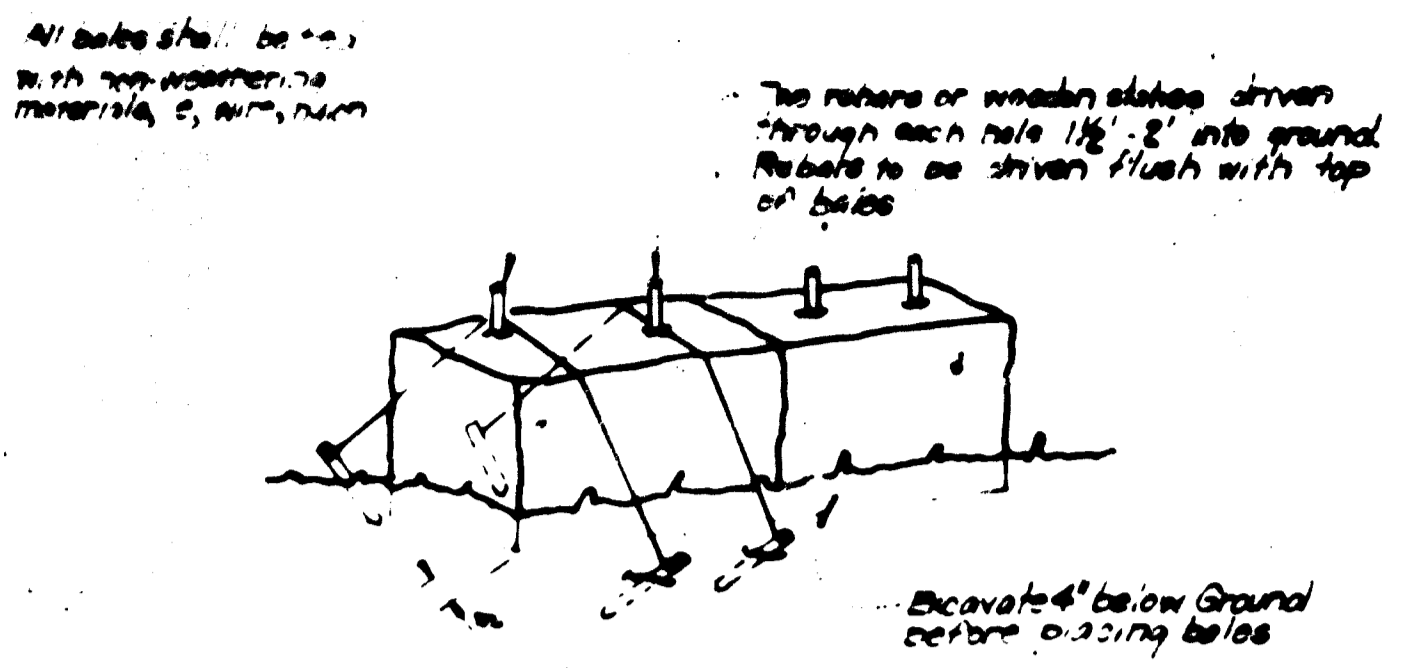
PROPERTY OF
DE. & A.T. DOLL
L. 457, F. 463
ENGINEER'S CERTIFICATE
I CERTIFY THAT THIS PLAN FOR EROSION AND SEDIMENT CONTROL REPRESENTS A PRACTICAL AND WORKABLE PLAN BASED ON MY PERSONAL KNOWLEDGE OF SITE CONDITIONS AND THAT IT WAS PREPARED IN ACCORDANCE WITH THE REQUIREMENTS OF THE HOWARD SOIL CONSERVATION DISTRICT.
7/28/84



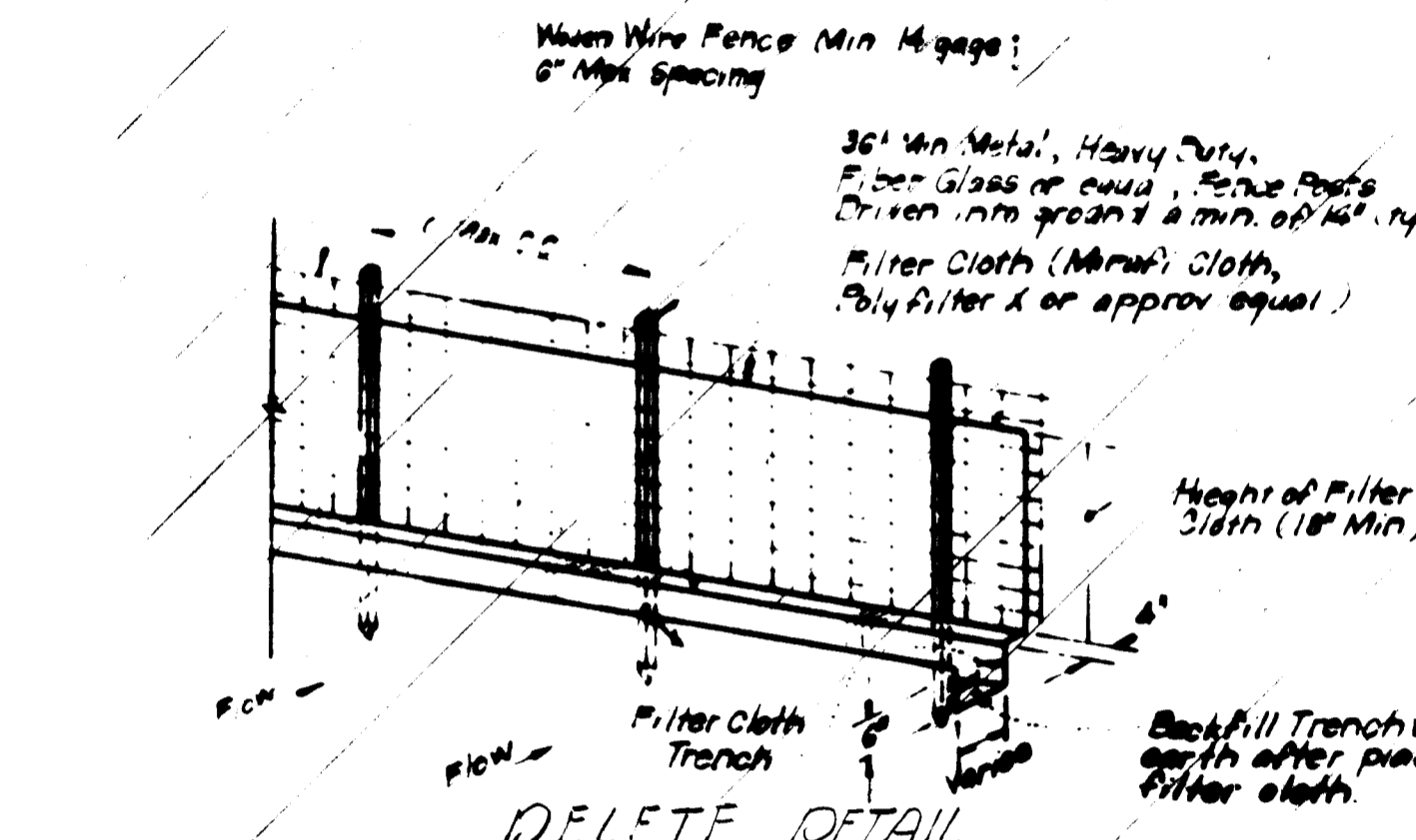
<ul style="list-style-type: none"> engineering landscape design construction contracting development cost property development 		LAND DESIGN ASSOCIATES 416 EAST JOPPA ROAD TOWSON, MARYLAND 21204 (301) 521-0112	
DESIGNED BY R.L.W.	S.D.P., SEDIMENT & EROSION CONTROL PLAN		SCALE 1"=30'
DRAWN BY L.O.	BRAMPTON HILLS SECTION 2, AREA 1 LOTS 14 THRU 22		DRAWING 2 OF 3
CHECKED BY R.L.W.	2ND ELECTION DISTRICT HOWARD COUNTY, MARYLAND		JOB NO.
DATE 7/28/84	FOR: GRAYDON HOMES, INC. 6516 JOHNNYCAKE ROAD BALTIMORE, MD 21207	FILE NO.	

GENERAL NOTES

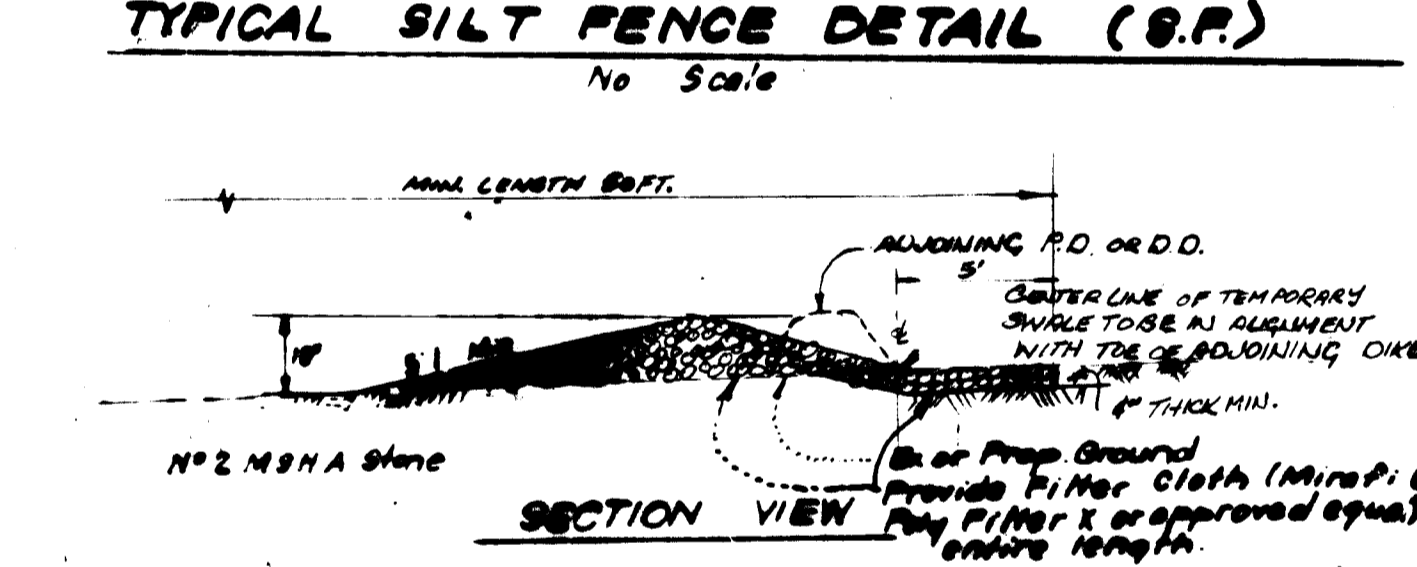
- Grading Permits shall be obtained prior to installation of Sediment Control & Grading
- All Sediment and Erosion Control Measures will be installed and stabilized according to this plan prior to any other grading, clearing or disturbing of the existing surface of the site. See note #8 for stabilization except that the seed mixture will be annual rye applied at a rate of 1.5 lbs/1000 sq ft.
- Notify the Bureau of Inspections and Permits at least 24 hrs before starting any work.
- All Sediment Control Practices to conform to the "Standards and Specifications for Soil Erosion and Sediment Control in Developing Areas" and shall be adjusted to meet actual field conditions.
- Stabilization of Disturbed ground to be done as soon after construction as possible.
- All grading shall be treated in accordance with the following Specifications:
 - Seed - certified 85% germination treated at the rate of 3 lbs/1000 sq ft. Mixture 40% Kentucky Blue, 20% Chewing Fescue, 20% Kentucky 31 and 20% annual rye.
 - Fertilizer - 10-10-10 applied at a rate of 15 lbs/1000 sq ft. Ground Agricultural Lime or Osmolite LIME applied at a rate of 30 lbs/1000 sq ft.
 - Mulch - Wood chips or straw applied at a rate of 2-3 lbs/1000 sq ft. Mulch shall be secured to the ground by any approved method i.e.; aprail tacks, chemical binder, etc.
 - All Seed used shall be Maryland State Certified.
- All Structural Sediment Control Measures are to remain in place until permission for their removal has been obtained from the Bureau of Inspections and Permits.
- On-Site Inspection and Maintenance of all Sediment Control Measures including clean out of Sediment Traps and dikes, and proper establishment of all planned vegetative measures will be the responsibility of the developer or his representative on the site, on a continuing day to day basis.
- It will be the developer's responsibility to provide additional Sediment & Erosion Control Devices to protect stabilized areas during construction.
- The Contractor shall keep all public roads free of sediment deposits left from the site leaving construction site.
- Stabilized Construction Entrances shall be placed at all construction entrances.
- If houses are to be constructed on an "As-Sold" basis of random, Single Lot Sediment Control, as shown on this sheet, shall be implemented.
- Total Amount of straw bale dike 810 LF. Total amount of perimeter dike 6900 LF.
- SITE ANALYSIS:**
 - Total Area - 370,600 ± 850 Acres
 - Area to be Roofed - 31,920 ± 012 Acres
 - Area to be Paved - 10,450 ± 024 Acres
 - Area to be Sealed - 147,000 ± 347 Acres
 - Area Undisturbed - 21,150 ± 124 Acres
- CONSTRUCTION SEQUENCE:**
 - Install Sediment & Erosion Control Devices and Stabilize Diversion Dikes
 - Excavate for Foundations and Rough Grade
 - Construct Structures, Driveways and Sidewalks
 - Final Grade and Stabilize in accordance with note #8.
- Approval of the plan is conditional upon the approval of Sediment Control Plan for the off-site waste or borrow area prior to the export of any borrow or export of waste far from this site.



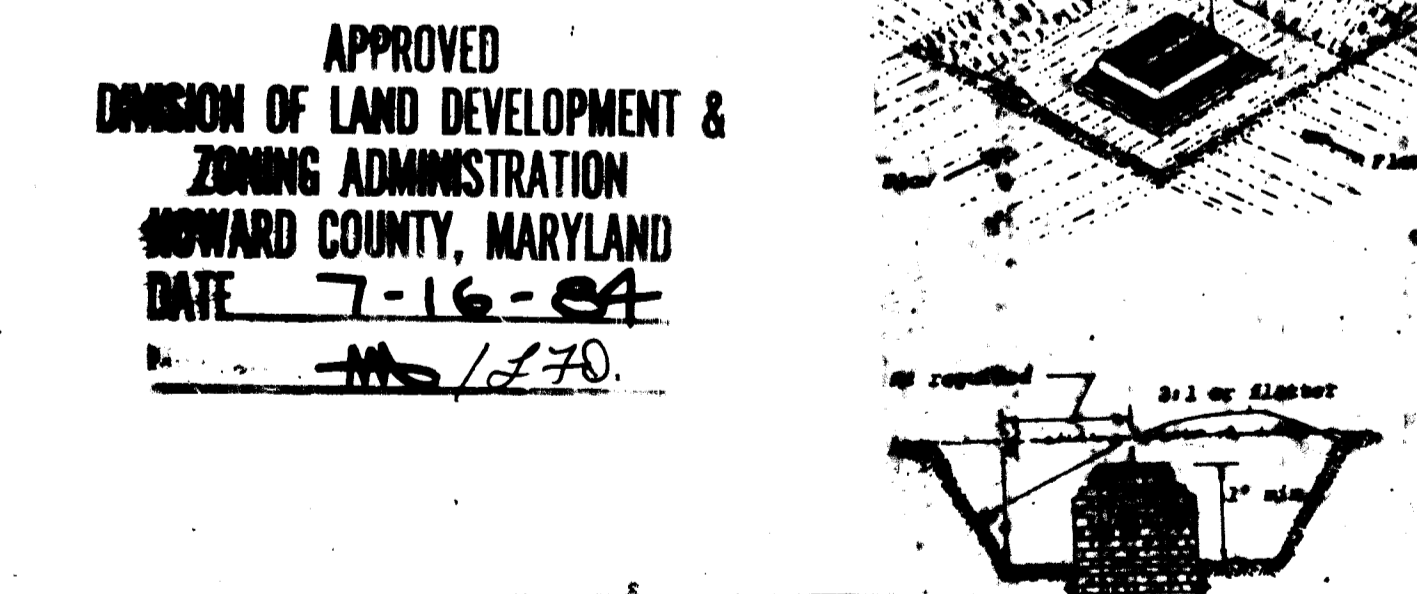
Note: In lieu of the use of rebar each straw bale may be fastened to ground with two 4' per bale and wire or nylon as shown above.



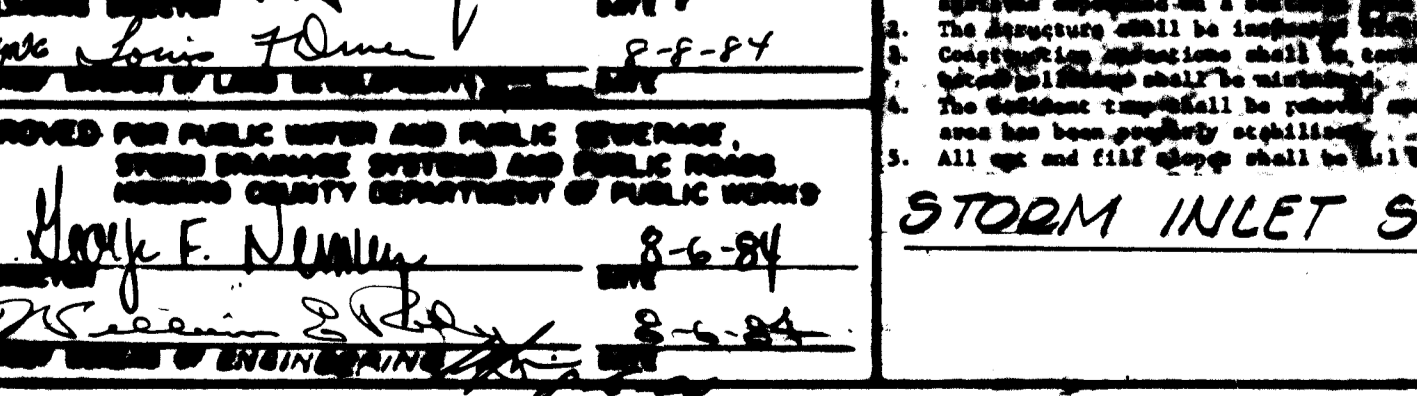
Note: When Wire Fence to be fastened securely to fence posts by use of wire ties. Filter Cloth to be fastened securely to woven wire, by use of wire ties spaced every 24" x 24".



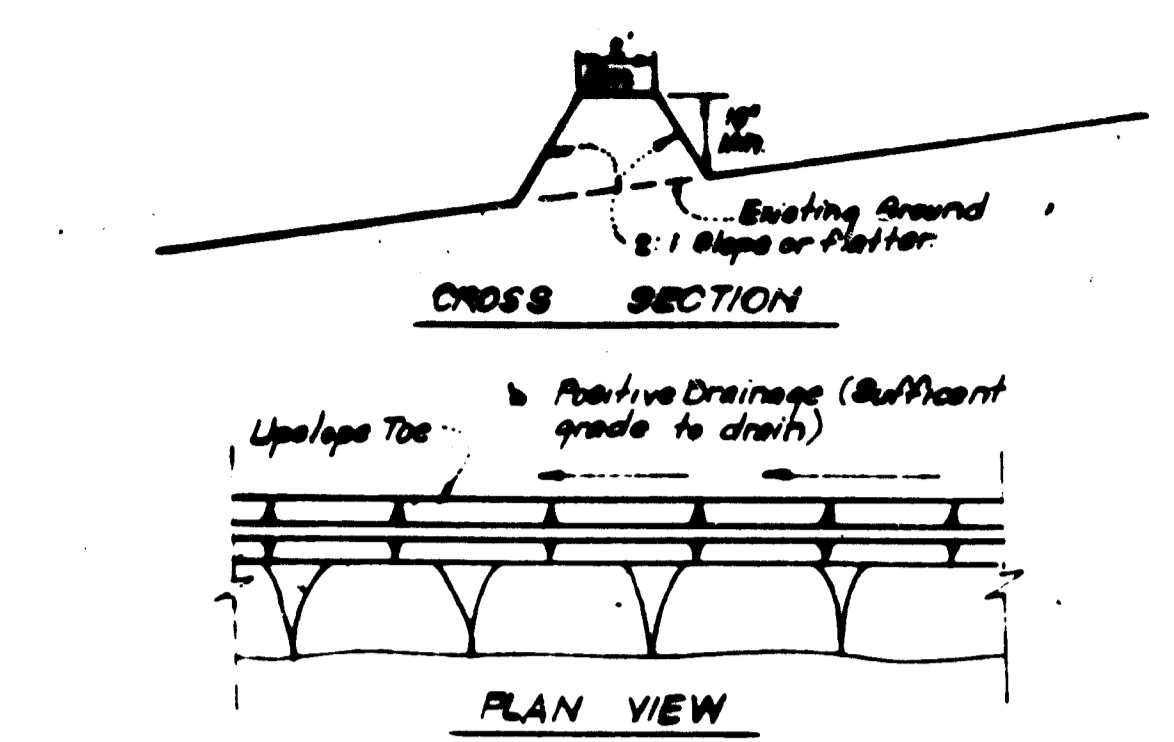
Note: Reinforced Class 'A' Concrete Paving or Bituminous Concrete Paving. 4' sidewalk where shown in plan.



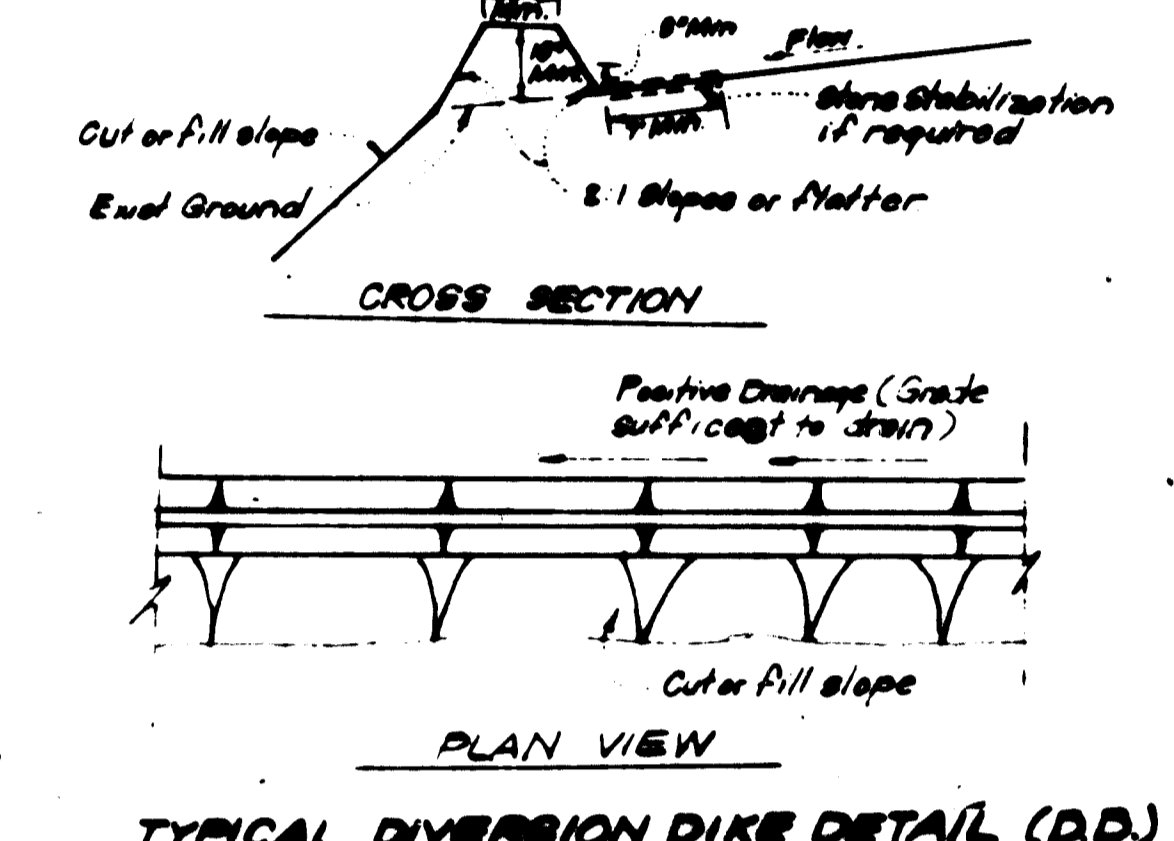
Note: Reinforced Class 'A' Concrete Paving or Bituminous Concrete Paving. 4' sidewalk where shown in plan.



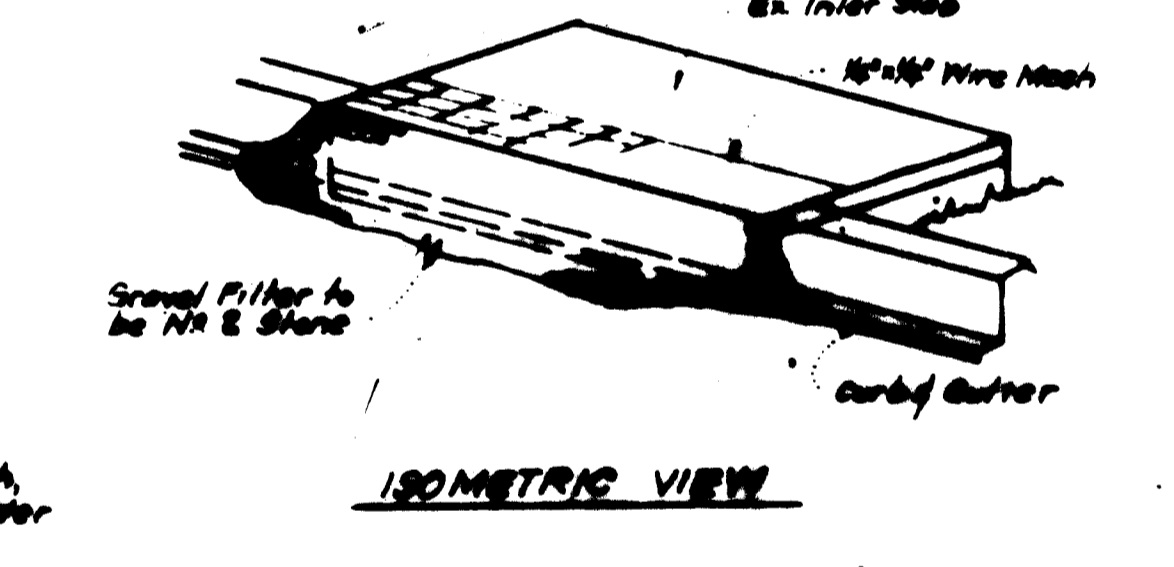
Note: Reinforced Class 'A' Concrete Paving or Bituminous Concrete Paving. 4' sidewalk where shown in plan.



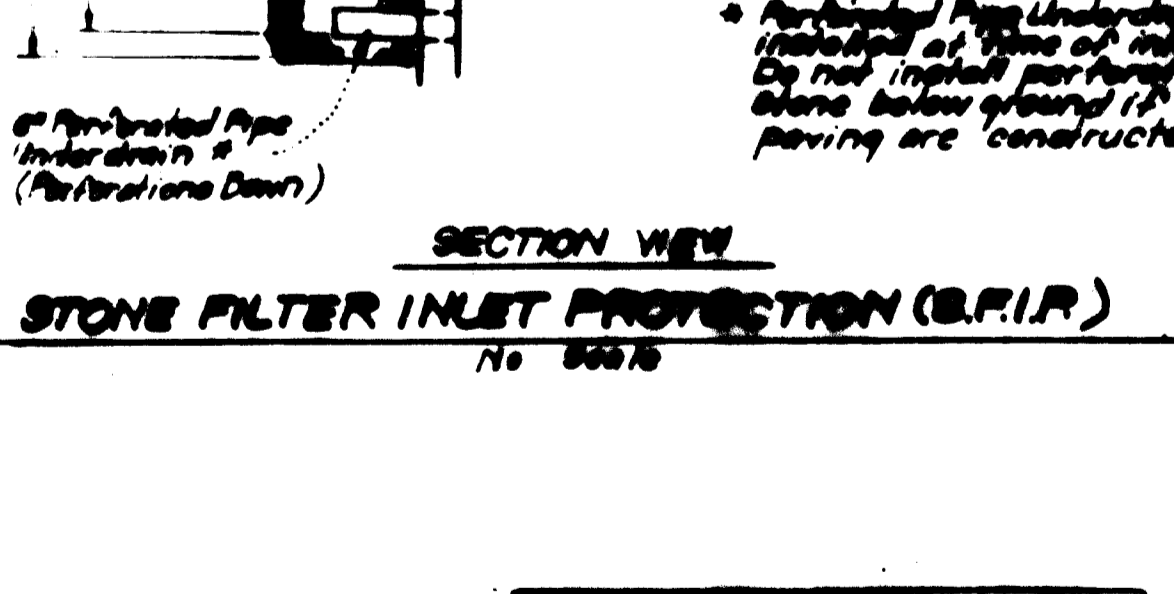
Note: When Wire Fence to be fastened securely to fence posts by use of wire ties. Filter Cloth to be fastened securely to woven wire, by use of wire ties spaced every 24" x 24".



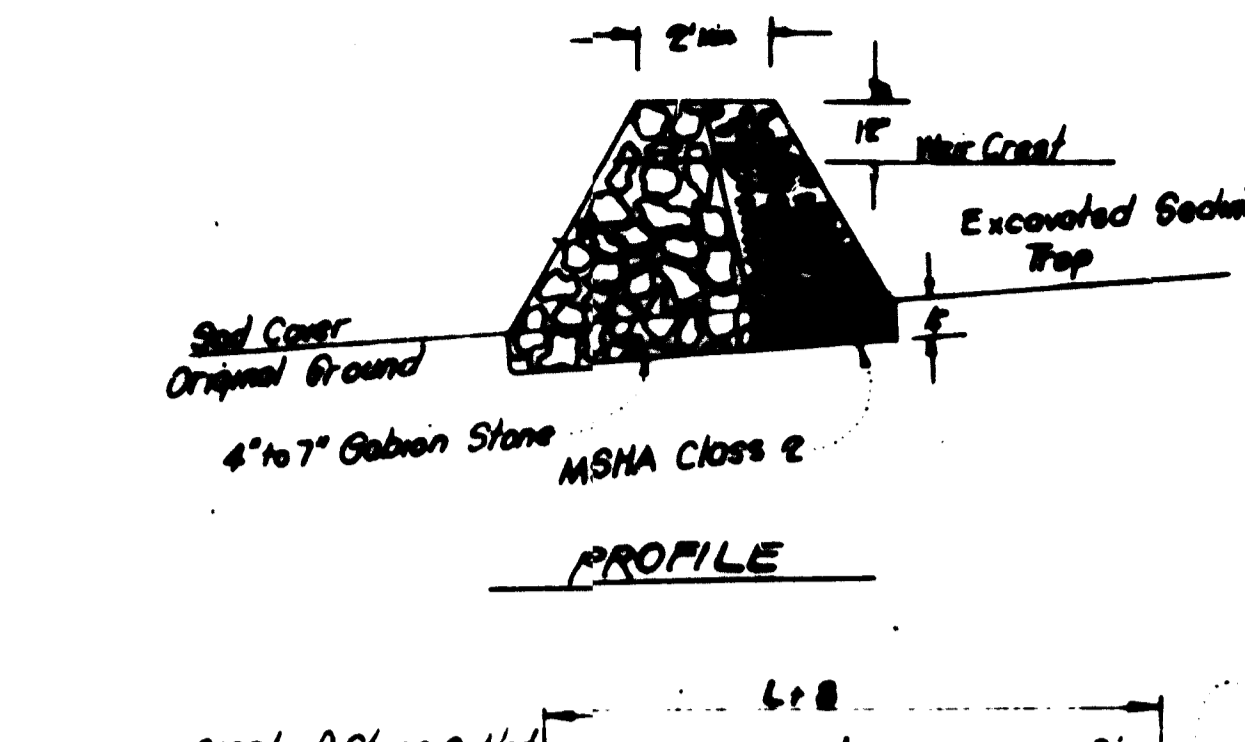
Note: Reinforced Class 'A' Concrete Paving or Bituminous Concrete Paving. 4' sidewalk where shown in plan.



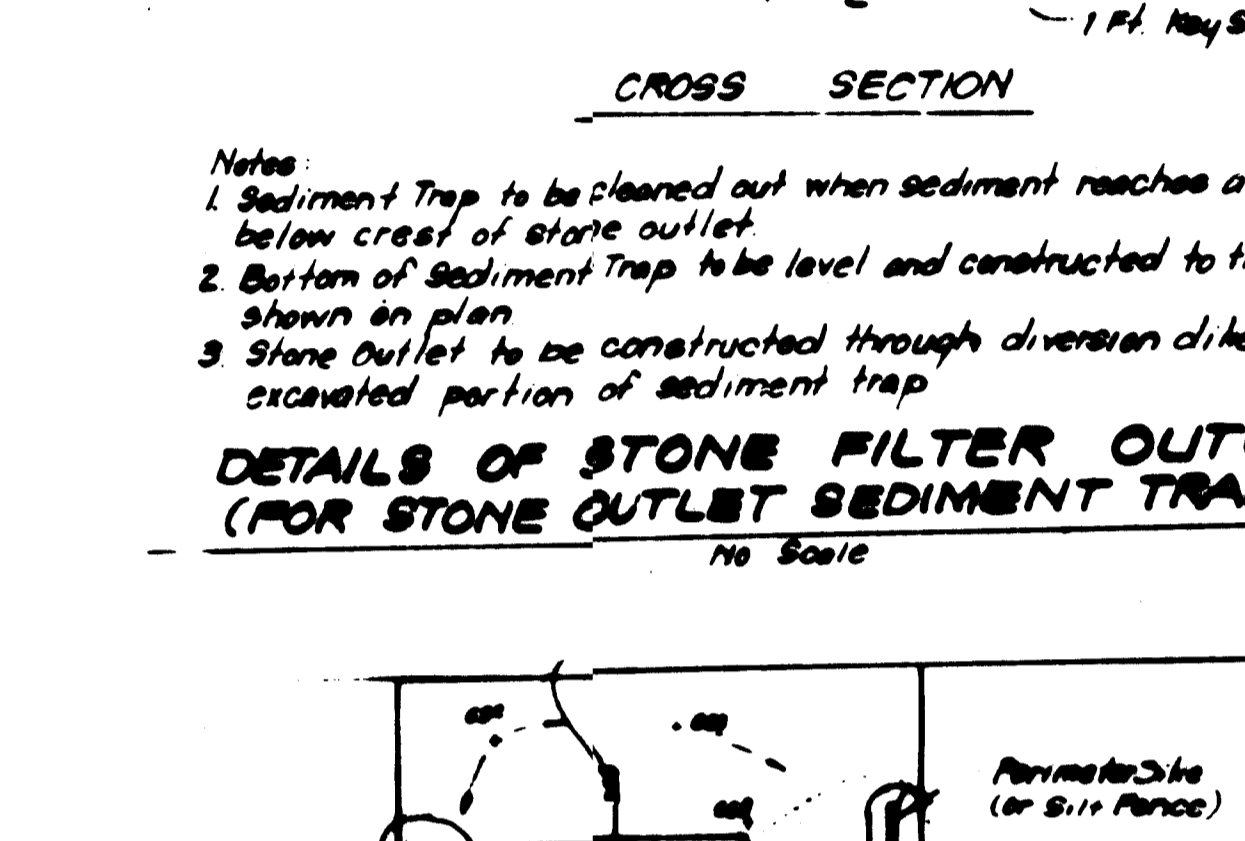
Note: Reinforced Class 'A' Concrete Paving or Bituminous Concrete Paving. 4' sidewalk where shown in plan.



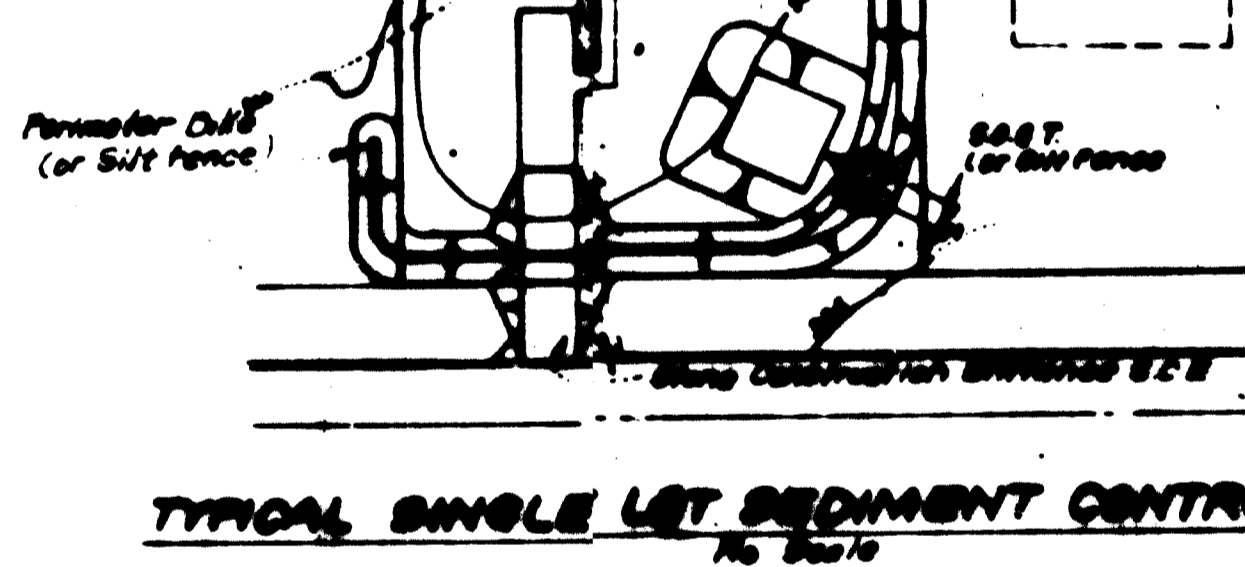
Note: Reinforced Class 'A' Concrete Paving or Bituminous Concrete Paving. 4' sidewalk where shown in plan.



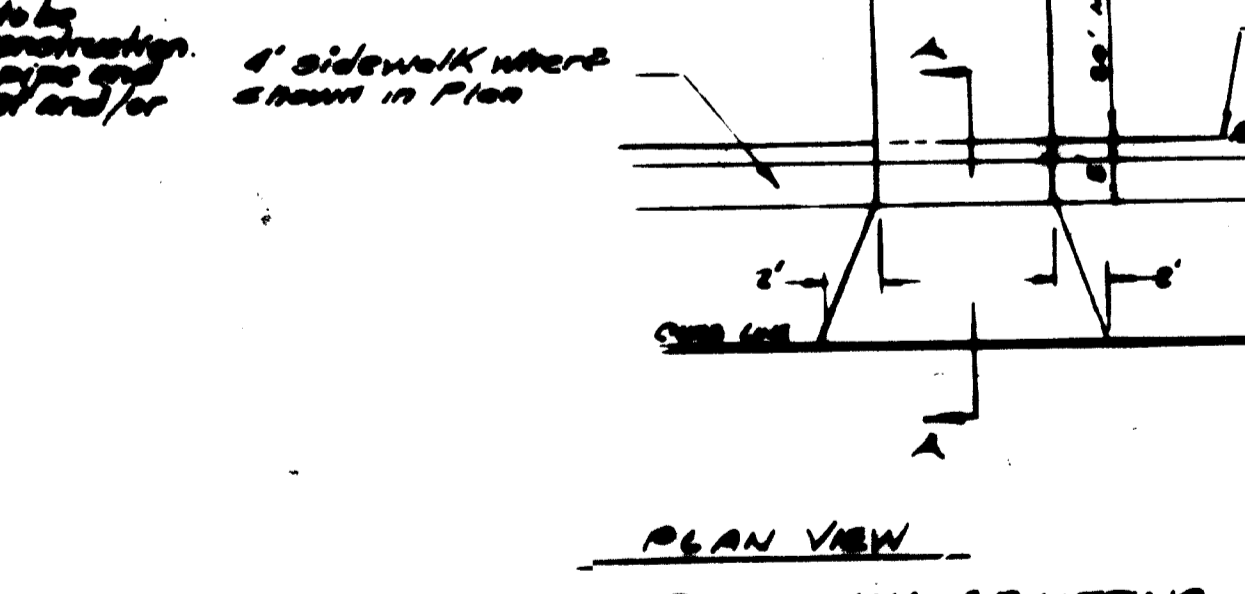
Note: Reinforced Class 'A' Concrete Paving or Bituminous Concrete Paving. 4' sidewalk where shown in plan.



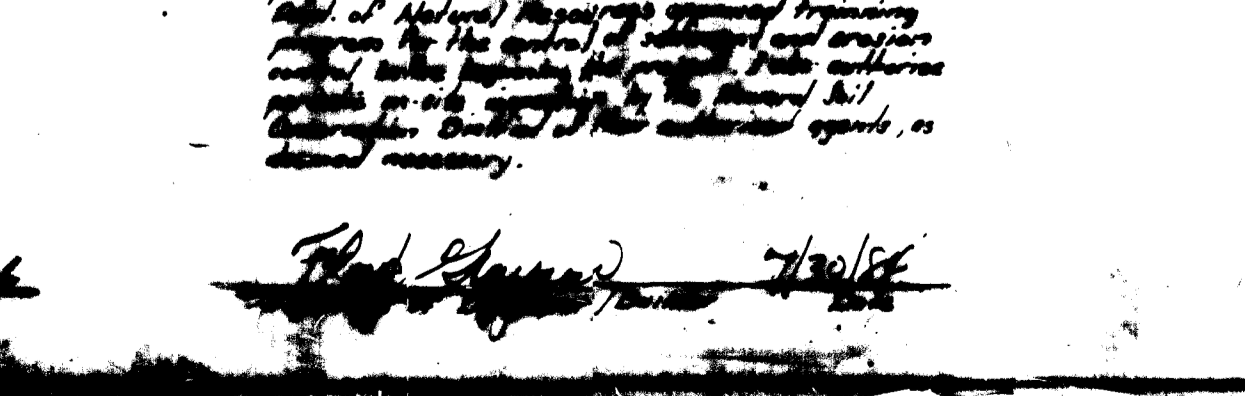
Note: Reinforced Class 'A' Concrete Paving or Bituminous Concrete Paving. 4' sidewalk where shown in plan.



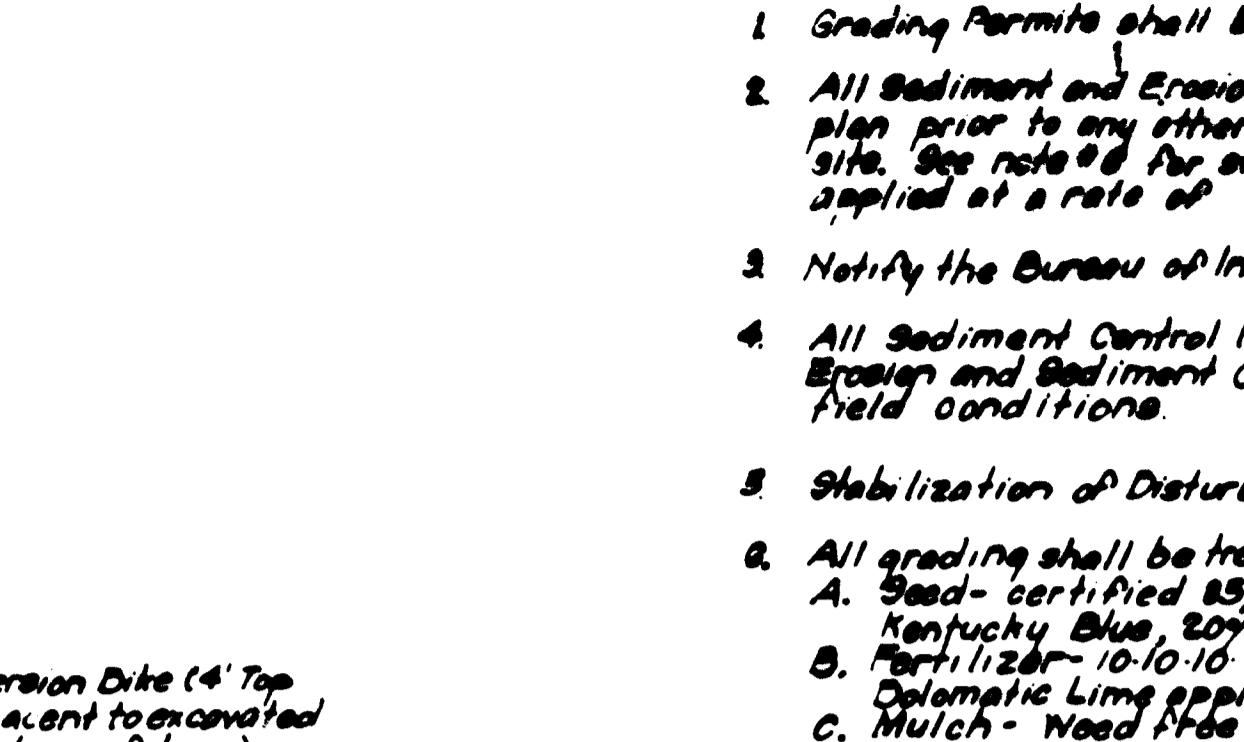
Note: Reinforced Class 'A' Concrete Paving or Bituminous Concrete Paving. 4' sidewalk where shown in plan.



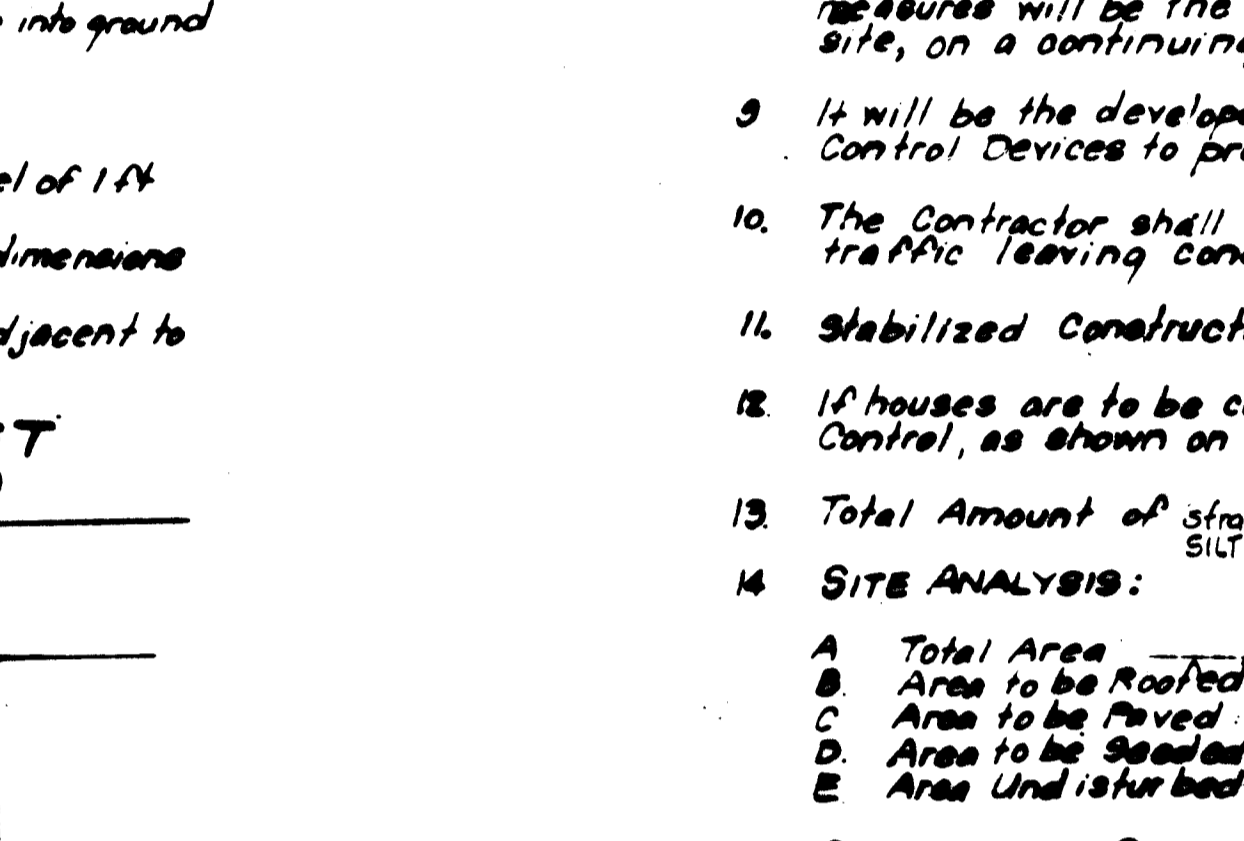
Note: Reinforced Class 'A' Concrete Paving or Bituminous Concrete Paving. 4' sidewalk where shown in plan.



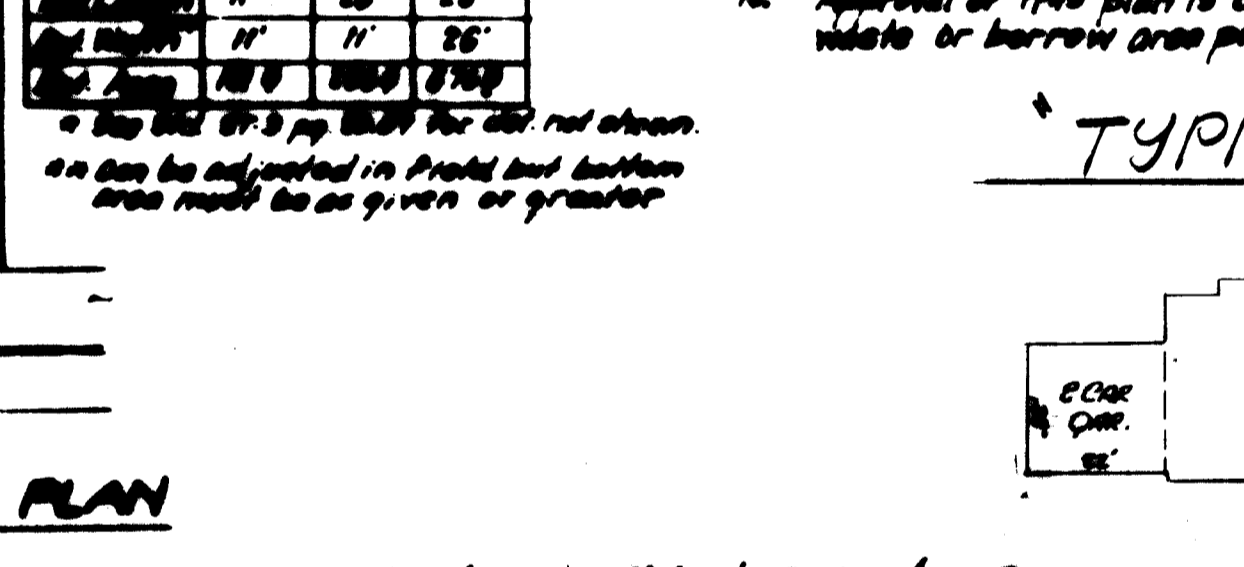
Note: Reinforced Class 'A' Concrete Paving or Bituminous Concrete Paving. 4' sidewalk where shown in plan.



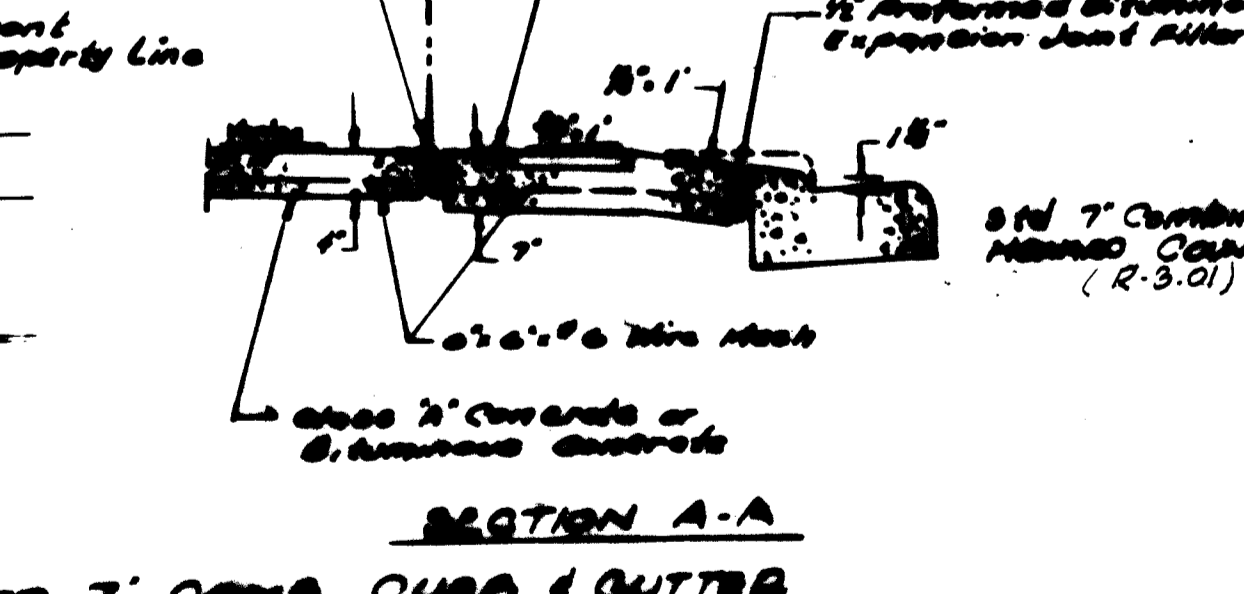
Note: Reinforced Class 'A' Concrete Paving or Bituminous Concrete Paving. 4' sidewalk where shown in plan.



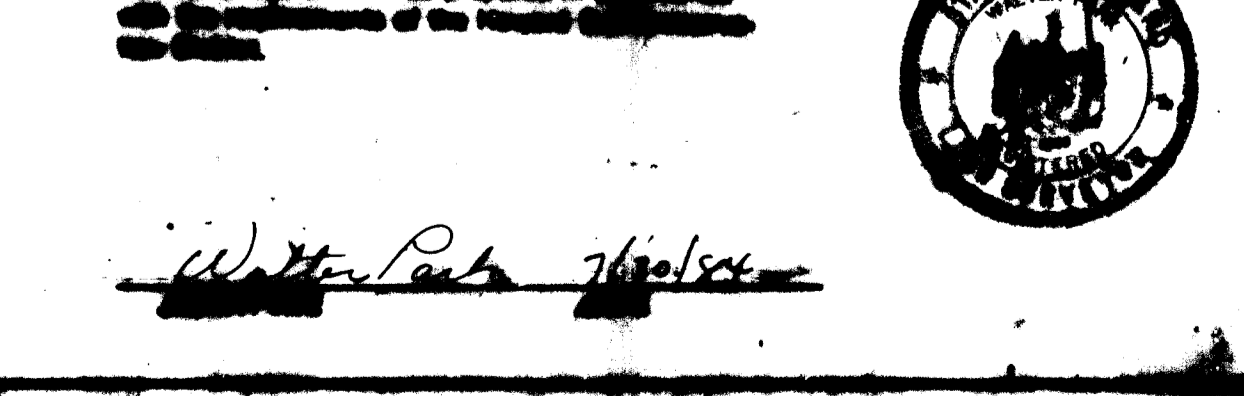
Note: Reinforced Class 'A' Concrete Paving or Bituminous Concrete Paving. 4' sidewalk where shown in plan.



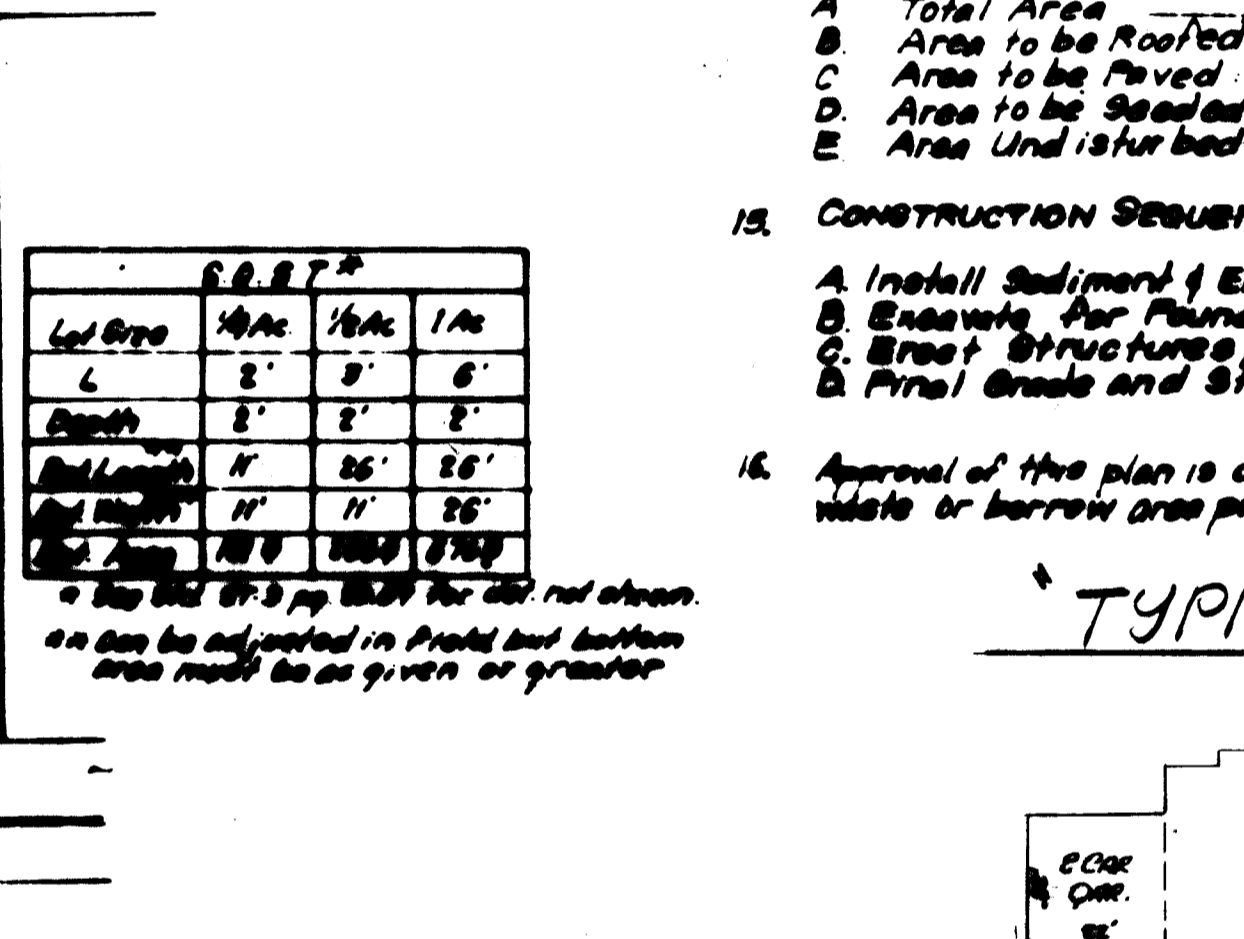
Note: Reinforced Class 'A' Concrete Paving or Bituminous Concrete Paving. 4' sidewalk where shown in plan.



Note: Reinforced Class 'A' Concrete Paving or Bituminous Concrete Paving. 4' sidewalk where shown in plan.

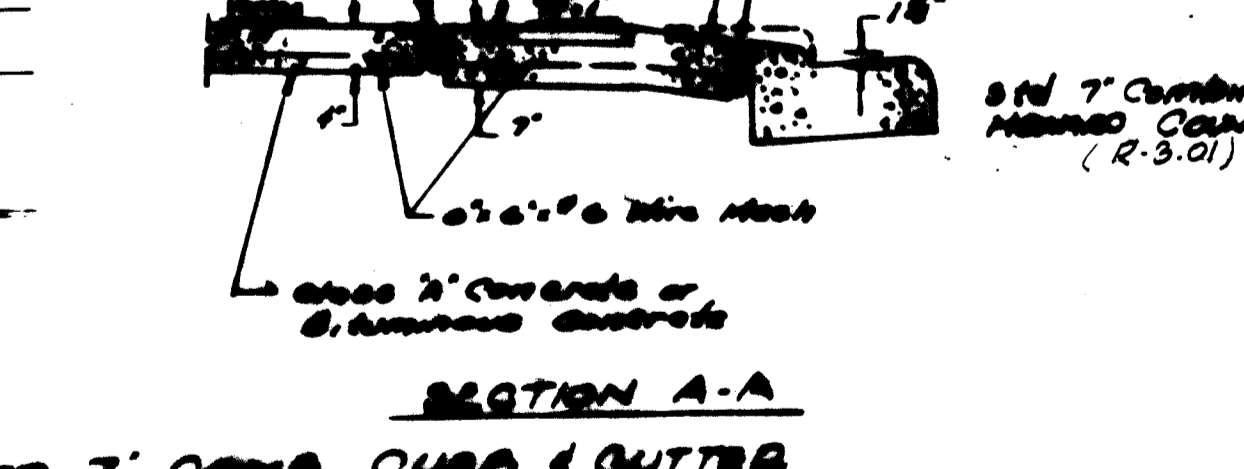


Note: Reinforced Class 'A' Concrete Paving or Bituminous Concrete Paving. 4' sidewalk where shown in plan.



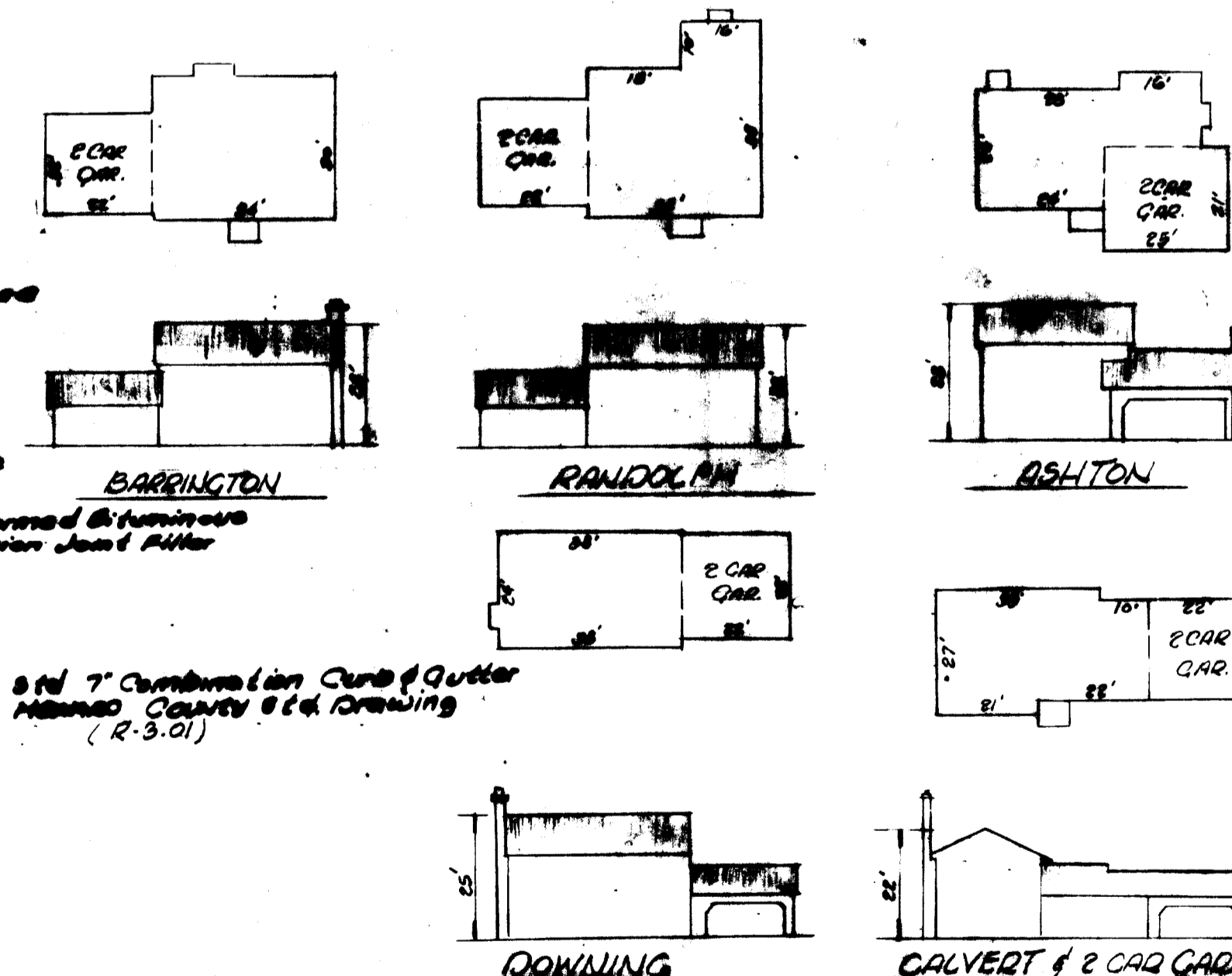
Lot Size	1/4 Ac	1/2 Ac	1 Ac
L	2'	3'	6'
Depth	2'	2'	2'
Bottom	1'	2'	2'
Outlet	1'	1'	2'
Outlet	1'	1'	2'
Outlet	1'	1'	2'

Note: Materials and construction shall be in accordance with Howard County Road Construction Code.



Note: Materials and construction shall be in accordance with Howard County Road Construction Code.

TYPICAL HOUSE TYPES



APPROVED FOR PUBLIC WATER AND PUBLIC SEWERAGE SYSTEMS, HOWARD COUNTY HEALTH DEPARTMENT
Joseph P. Ryan 8-8-84

APPROVED HOWARD COUNTY OFFICE OF PLANNING & ZONING
James H. Ryan 8-8-84

APPROVED FOR PUBLIC WATER AND PUBLIC SEWERAGE, SWISS DRAINAGE SYSTEMS AND PUBLIC ROADS, HOWARD COUNTY DEPARTMENT OF PUBLIC WORKS
Harold E. Newby 8-6-84

Reviewed for: HOWARD S.C.D.
John W. Miller 8-2-84

THIS DOCUMENTATION IS A SERVICE OF THE HOWARD S.C.D. CONSERVATION DIVISION.

APPROVED FOR PUBLIC WATER AND PUBLIC SEWERAGE SYSTEMS, HOWARD COUNTY HEALTH DEPARTMENT
Joseph P. Ryan 8-8-84

APPROVED FOR PUBLIC WATER AND PUBLIC SEWERAGE SYSTEMS, HOWARD COUNTY HEALTH DEPARTMENT
Joseph P. Ryan 8-8-84

APPROVED FOR PUBLIC WATER AND PUBLIC SEWERAGE SYSTEMS, HOWARD COUNTY HEALTH DEPARTMENT
Joseph P. Ryan 8-8-84

LAND DESIGN ASSOCIATES
415 EAST JOPPA ROAD
TOWSON, MARYLAND 21284
(301) 981-0112

BRAMPTON HILLS
SECTION 2, AREA 1
LOTS 14 THRU 32

SCALE: 1/8" = 1'-0"

DATE: 7/20/84

SDP-84-306