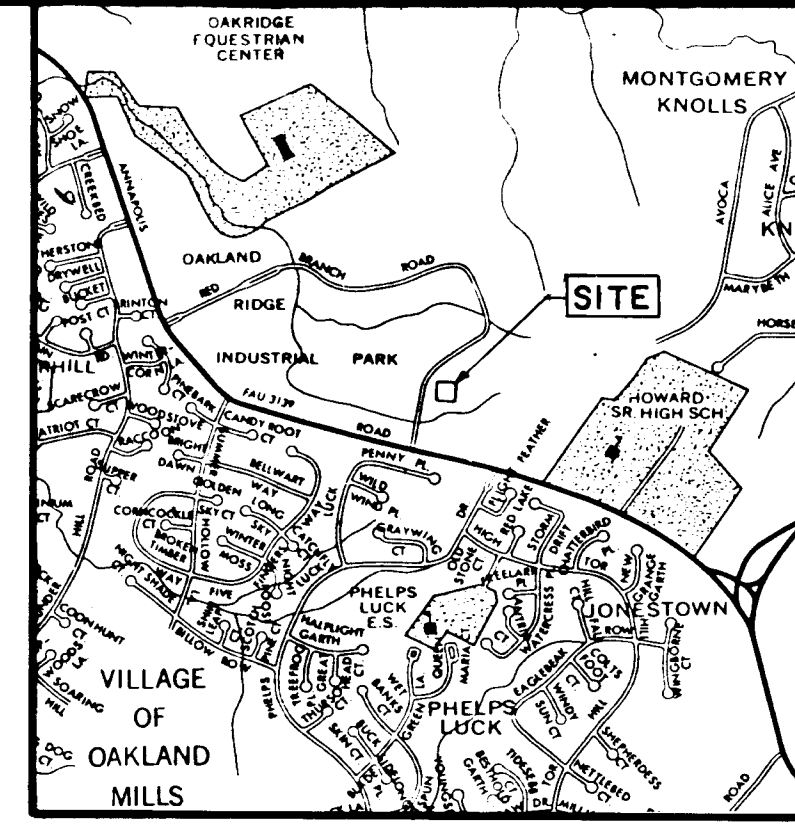


- LEGEND**
- EXIST. CONTOURS
 - EXIST. CURB & GUTTER
 - EXIST. STORM DRAIN
 - EXIST. SANITARY SEWER
 - EXIST. WATER LINE
 - EXIST. C & P CONDUIT
 - EXIST. ELECTRIC CABLE
 - EXIST. TREE
 - TREE PROTECTION



VICINITY MAP
SCALE: 1" = 2000'

gva
george vaeth
associates, inc
architect

5501 twin knolls road suite 100
columbia, maryland 21045

Paul J. ...
5/4/84

**WHITNEY
AILEY
FOX
MAGNANI** CONSULTING ENGINEERS

Suite 311 Green Spring Station
2360 West Joppa Road
Lutherville, Maryland 21093
301-296-4200

- GENERAL NOTES**
- EXISTING PROPERTY LINES, TOPOGRAPHY, STORM DRAINAGE AND SANITARY SEWER LOCATION AND INVERTS ARE FROM SURVEY PLAT PREPARED BY ELTON E. SNADER AND ASSOCIATES DATED FEBRUARY, 1971. OTHER UTILITY DATA SHOWN IS TAKEN FROM RECORD DRAWINGS AS LISTED BELOW.
 - 0. COLUMBIA, OAKLAND RIDGE INDUSTRIAL PARK, ELECTION DISTRICT-ELLICOTT CITY NO. 2, CONTRACT 228W AND S.W.O. 6023-2, DWGS 3 AND 4 OF 4 PREPARED BY WHITMAN, REQUARDT AND ASSOCIATES.
 - UNDERGROUND UTILITIES ARE SHOWN FOR THE CONTRACTOR'S CONVENIENCE ONLY. THE EXISTANCE OF UNDERGROUND UTILITIES OTHER THAN THOSE SHOWN IS NOT KNOWN. CONTRACTOR SHALL DIG TEST PITS, VERIFY LOCATIONS AND CLEARANCES BEFORE STARTING ANY WORK. ALL TRENCHES EXCAVATED IN RED BRANCH RD SHALL BE REPAIRED IN ACCORDANCE WITH HOWARD CO. STANDARDS.

APPROVED
PLANNING BOARD
OF HOWARD COUNTY
DATE **9-19-84**
m. J. ...

OWNER AND DEVELOPER
BRANTLY DEVELOPMENT CORP.
5501 TWIN KNOLLS RD SUITE 100
COLUMBIA MD 21045

REVISIONS

NO.	DATE	BY

SUBDIVISION NAME OAKLAND RIDGE IND. PARK		SECT./AREA 2	LOT/PARCEL # 92 PARCEL 269
PLAT # 4024	BLOCK # 18	ZONE IND.	TAX/ZONE MAP 30
ELEC. DIST. 2		CENSUS TR. 6023.02	
WATER CODE		SEWER CODE	
APPROVED FOR PUBLIC WATER AND PUBLIC SEWERAGE AND STORM DRAINAGE DEPARTMENT			
<i>W. F. Neumy</i>		11-28-84	
<i>William ...</i>		11-28-84	
APPROVED FOR PUBLIC WATER AND PUBLIC SEWERAGE DEPARTMENT			
<i>James ...</i>		12-3-84	
APPROVED FOR PUBLIC WATER AND PUBLIC SEWERAGE DEPARTMENT			
<i>Thomas L. ...</i>		12-4-84	
<i>John ...</i>		12-4-84	

OFFICE BUILDING
Brantly Development Corporation
OAKLAND RIDGE INDUSTRIAL PARK
SECTION 2 LOT 92
COLUMBIA, HOWARD CO., MD.
PLAT BOOK NO. 4024

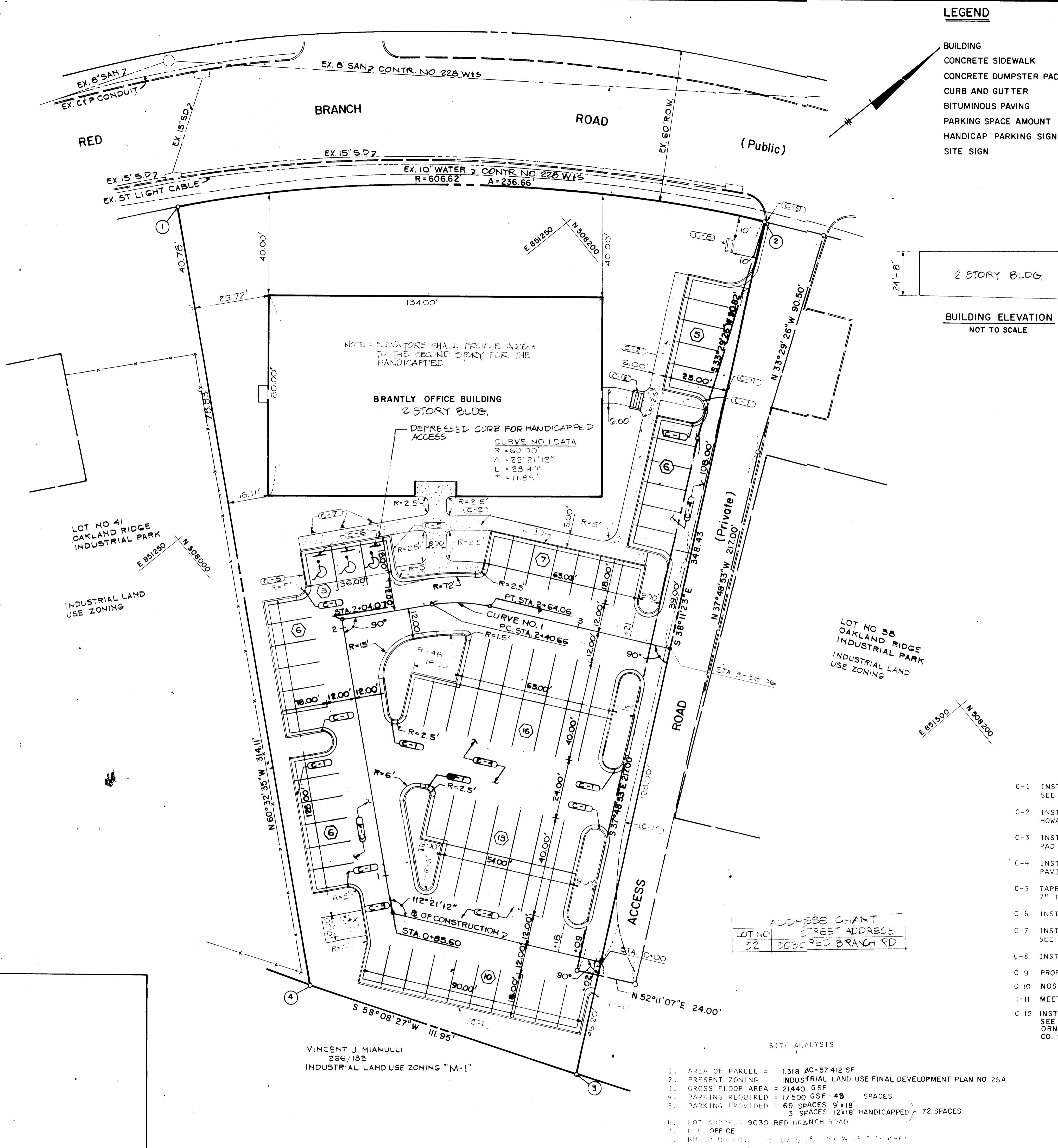
EXISTING CONDITIONS PLAN

PROJECT NUMBER
DRAWING NUMBER
PRELIMINARY ISSUE
CONSTRUCTION ISSUE
SCALE
1" = 20' OF 147

SD-1

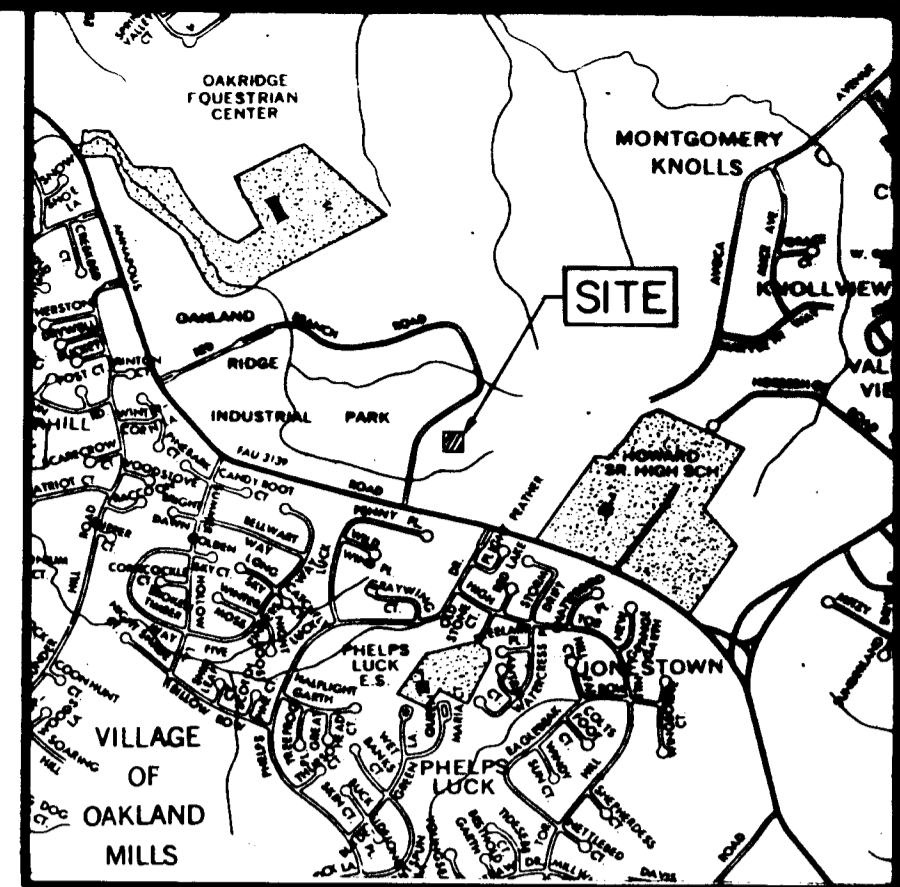
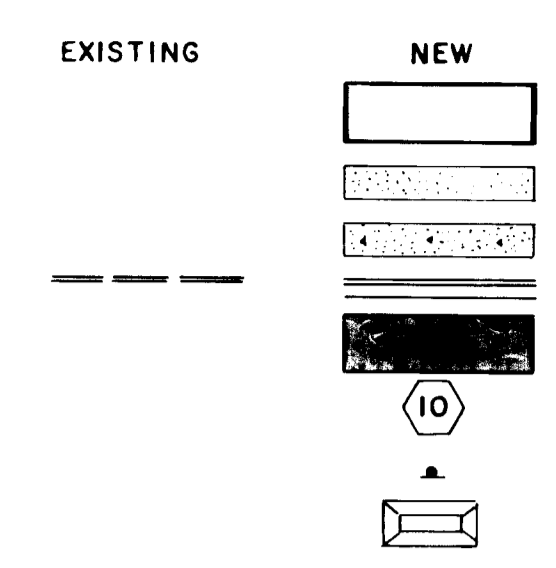
ADDRESS CHART

LOT NO.	STREET ADDRESS
52	9080 RED BRANCH RD

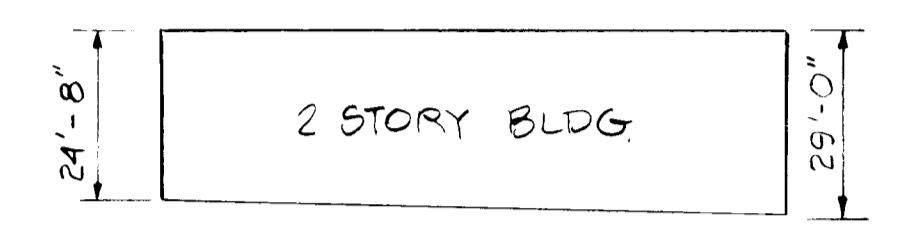


LEGEND

- BUILDING
- CONCRETE SIDEWALK
- CONCRETE DUMPSTER PAD
- CURB AND GUTTER
- BITUMINOUS PAVING
- PARKING SPACE AMOUNT
- HANDICAP PARKING SIGN
- SITE SIGN



VICINITY MAP
SCALE: 1" = 2000'



BUILDING ELEVATION
NOT TO SCALE

GENERAL NOTES

- A. PRIOR TO THE START OF ANY WORK THE CONTRACTOR SHALL STAKE OUT THE BASELINE OF CONSTRUCTION BUILDING, PAVING AND VERIFY ALL OFFSETS AND SETBACKS.
- B. THE CONTRACTOR SHALL NOTIFY "MISS UTILITY" AT TELEPHONE NO. (301) 599-0100 AT LEAST 72 HOURS PRIOR TO STARTING EXCAVATION TO VERIFY ALL LOCATIONS OF EXISTING UTILITIES.
- C. ABUTTING PROPERTIES TO BE PROTECTED FROM DAMAGE. REPAIRS ARE AN OBLIGATION OF THE CONTRACTOR. THE CONTRACTOR SHALL BE LIABLE FOR ANY DAMAGE TO EXISTING VEGETATION AND ANY VIOLATIONS OF THE PROTECTED AREAS.
- D. ALL CONSTRUCTION SHALL BE ACCOMPLISHED IN ACCORDANCE WITH HOWARD COUNTY, DEPARTMENT OF PUBLIC WORK STANDARDS, SPECIFICATIONS AND REQUIREMENTS.
- E. THE INFORMATION SHOWN ON THESE PLANS IS FOR THE CONVENIENCE OF THOSE CONCERNED ONLY. THE CORRECTNESS OR COMPLETENESS OF THE INFORMATION SHOWN IS NOT WARRANTED OR GUARANTEED. THE CONTRACTOR SHALL VERIFY ALL INFORMATION TO HIS OWN SATISFACTION.
- F. THE LOCATIONS OF EXISTING UNDERGROUND UTILITIES ARE SHOWN IN AN APPROXIMATE WAY ONLY. THE CONTRACTOR SHALL DETERMINE THE EXACT LOCATION OF ALL EXISTING UTILITIES BEFORE COMMENCING WORK. HE AGREES TO BE FULLY RESPONSIBLE FOR ANY AND ALL DAMAGES WHICH MIGHT BE OCCASIONED BY HIS FAILURE TO EXACTLY LOCATE AND PRESERVE ANY AND ALL UNDERGROUND UTILITIES.
- G. ALL DISTURBED AREAS NOT STABILIZED WITH PAVING, BUILDING, SODDING OR MULCH IN PLANTING AREAS SHALL BE SEEDED AND MULCHED IN ACCORDANCE WITH THE SPECIFICATIONS AND SEDIMENT CONTROL PLAN, PRIOR TO CONTRACT COMPLETION.
- H. THE CONTRACTOR SHALL CONTACT THE CONSTRUCTION INSPECTION/SURVEY DIVISION 24 HOURS IN ADVANCE OF COMMENCEMENT OF WORK AT 792-7272.

gva
george vaeth
associates, inc.
architect

5501 twin knolls road suite 108
columbia, maryland 21045



WHITNEY CONSULTING ENGINEERS
BAILEY
FOX
MAGNANI

Suite 311 Green Spring Station
2360 West Joppa Road
Lutherville, Maryland 21093
301-296-4200

APPROVED
PLANNING BOARD
OF HOWARD COUNTY
DATE 9-19-84

OWNER AND DEVELOPER
BRANTLY DEVELOPMENT CORP.
5501 TWIN KNOLLS RD SUITE 100
COLUMBIA MD 21045

REVISIONS

NO.	DATE	ITEM

COORDINATES

NO	NORTH	EAST
1	508083.58	851147.31
2	508262.06	851300.47
3	507988.21	851515.89
4	507929.11	851420.81

SUBDIVISION NAME OAKLAND RIDGE IND. PARK	SECT./AREA 2	LOT/PARCEL # 92 PARCEL 269
PLAT # 4024	BLOCK # 18	ZONE IND
TAX/ZONE MAP 30	ELEC. DIST. 2	CENSUS TR. G029.02
WATER CODE	SEWER CODE	

APPROVED: FOR PUBLIC WATER AND PUBLIC SEWERAGE AND STORM DRAINAGE SYSTEMS AND ROADS.
HOWARD COUNTY DEPARTMENT OF PUBLIC WORKS
DIRECTOR: *John F. Neumy* 11-21-84
CHIEF, BUREAU OF ENGINEERING: *William J. ...* 11-23-84

APPROVED: FOR PUBLIC WATER AND PUBLIC SEWERAGE SYSTEMS
HOWARD COUNTY HEALTH DEPARTMENT
DIRECTOR: *John ...* 12-3-84

APPROVED: HOWARD COUNTY OFFICE OF PLANNING AND ZONING
PLANNING DIRECTOR: *John ...* 12-4-84
DATE: 12-4-84

OFFICE BUILDING
Brantly Development Corporation
OAKLAND RIDGE INDUSTRIAL PARK
SECTION 2 LOT 92
COLUMBIA, HOWARD CO., MD.
PLAT BOOK NO. 4024

LAYOUT PLAN

PROJECT NUMBER	DRAWING NUMBER
PRELIMINARY ISSUE	SD-2
CONSTRUCTION ISSUE	

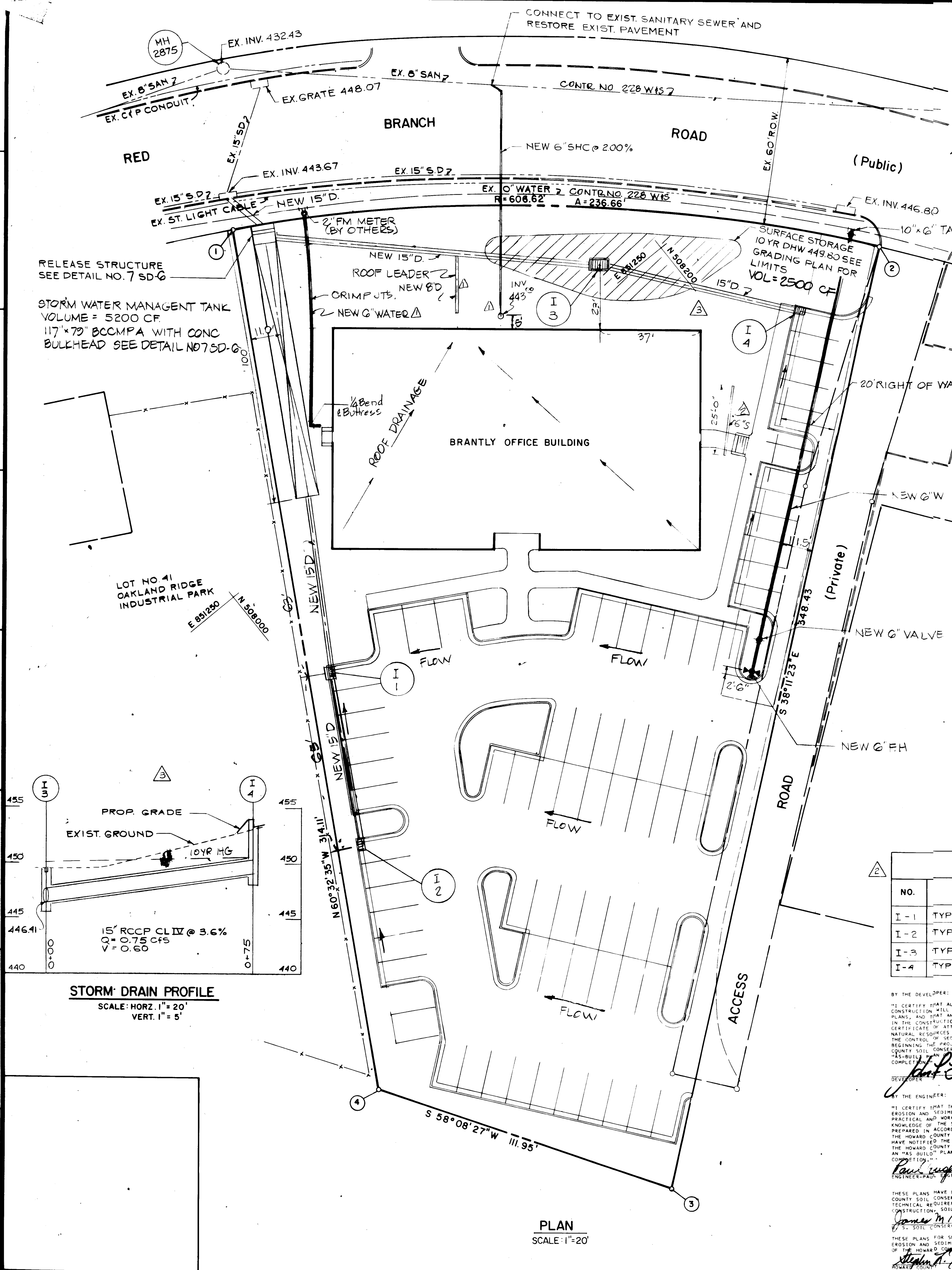
- CONSTRUCTION NOTES**
- C-1 INSTALL ST'D 7" COMB CURB & GUTTER SEE HOWARD CO. ST'D R-3.01
 - C-2 INSTALL CONCRETE SIDEWALK SEE HOWARD CO. ST'D R-3.05
 - C-3 INSTALL CONCRETE DUMPSTER PAD SEE DETAIL NO.1 SD-6
 - C-4 INSTALL BITUMINOUS CONCRETE PAVING SEE DETAIL NO.2 SD-6
 - C-5 TAPER CURB HEIGHT FROM 7" TO 1/2" IN 18 FEET -SEE DETAIL 10, SD-6
 - C-6 INSTALL WHEELSTOPS- SEE DETAIL NO.7 SD-6
 - C-7 INSTALL HANDICAP PARKING SIGN SEE DETAIL NO.6 SD-6
 - C-8 INSTALL SITE SIGN
 - C-9 PROPOSED CURB TO MEET EXISTING CURB
 - C-10 NOSE DOWN CURB IN 2 FEET
 - C-11 MEET EXISTING PAVING
 - C-12 INSTALL STANDARD CONCRETE STEPS SEE HOWARD CO. ST'D G 7.01 AND ORNAMENTAL RAILING SEE HOWARD CO. ST'D G 7.03.

ADDRESS CHART

LOT NO.	STREET ADDRESS
92	3086 RED BRANCH RD.

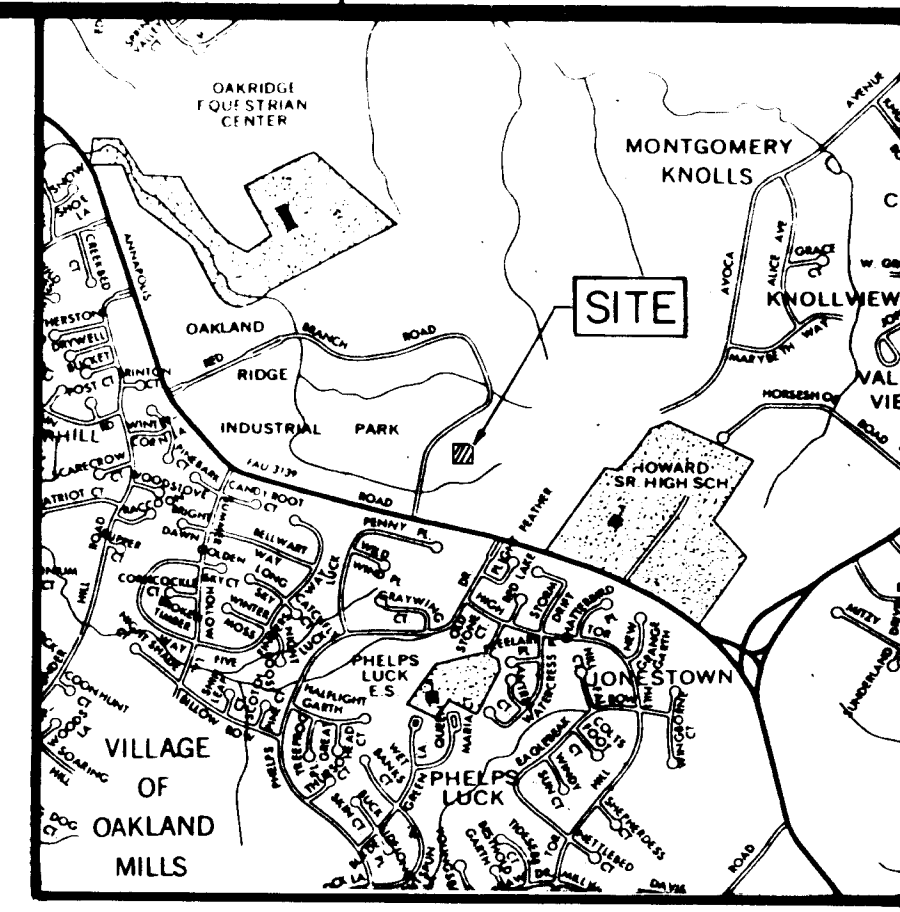
- SITE ANALYSIS**
1. AREA OF PARCEL = 1,318 AC=57,412 SF
 2. PRESENT ZONING = INDUSTRIAL LAND USE FINAL DEVELOPMENT PLAN NO. 25A
 3. GROSS FLOOR AREA = 21,440 GSF
 4. PARKING REQUIRED = 1/500 GSF = 43 SPACES
 5. PARKING PROVIDED = 69 SPACES 9'x18' 3 SPACES 12'x18' HANDICAPPED } 72 SPACES
 6. LOT ADDRESS 9030 RED BRANCH ROAD
 7. USE OFFICE
 8. BUILDING FOOTPRINT 107.5' x 107.5'

VINCENT J. MIANULLI
266/133
INDUSTRIAL LAND USE ZONING "M-1"



LEGEND

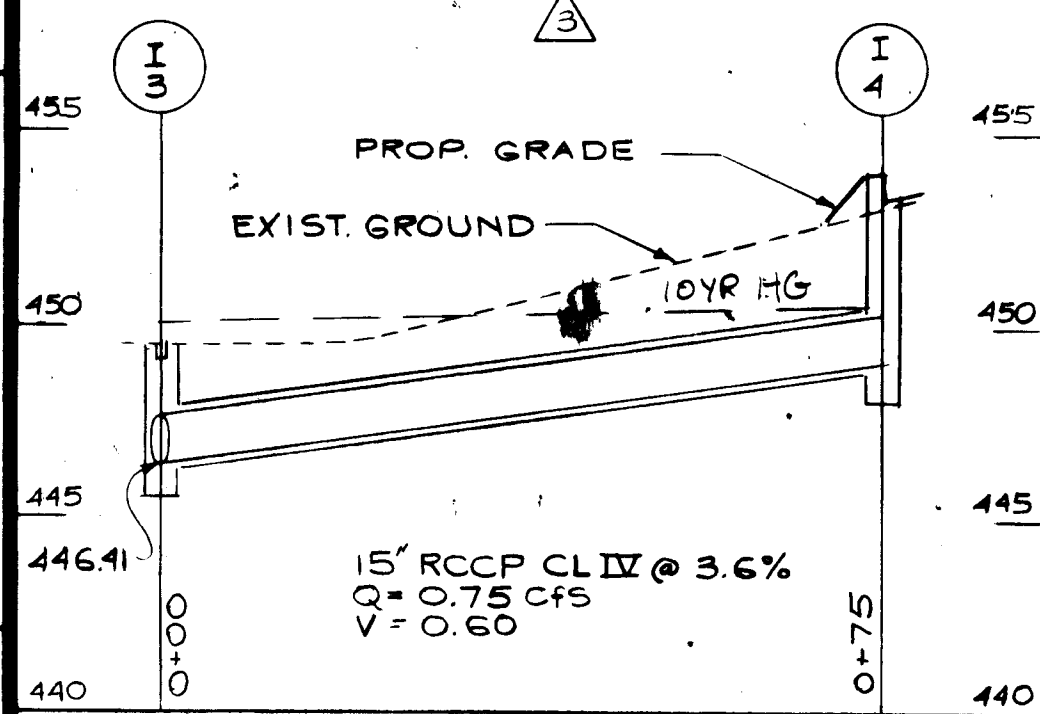
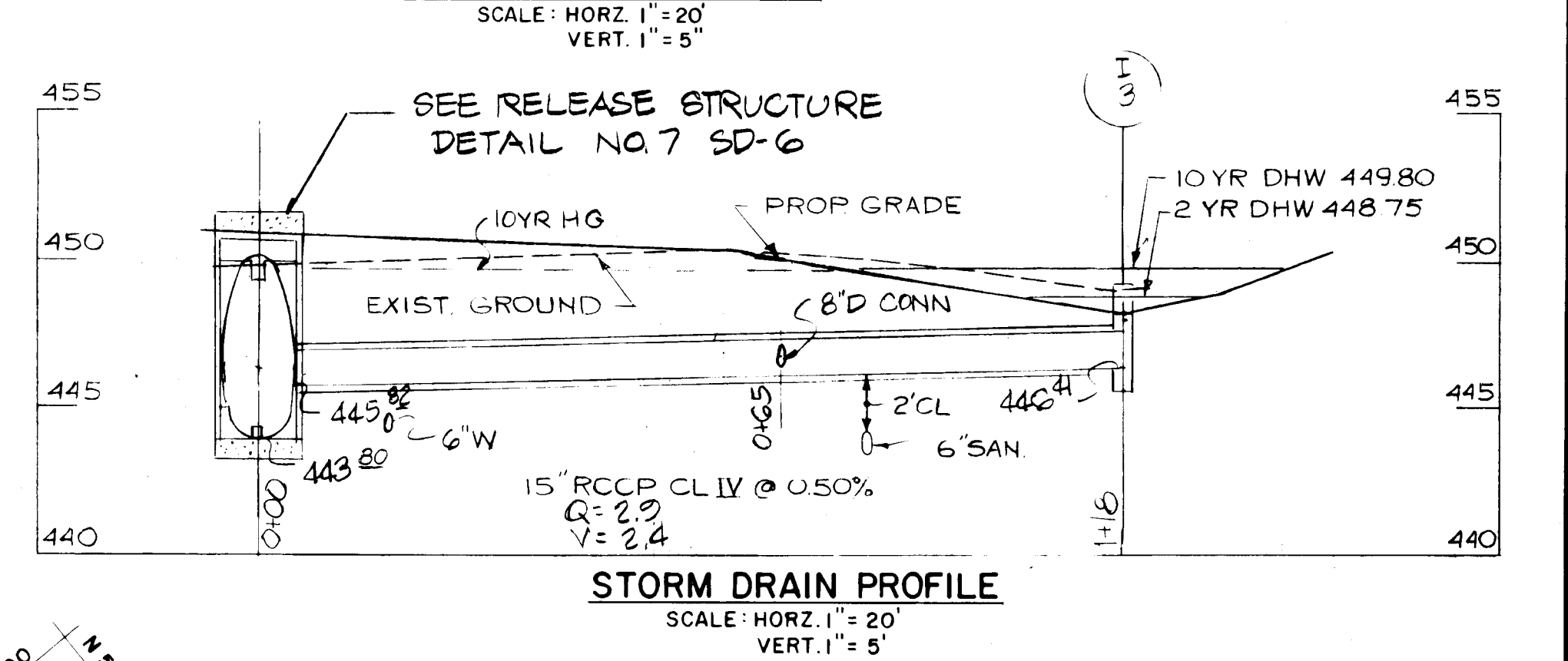
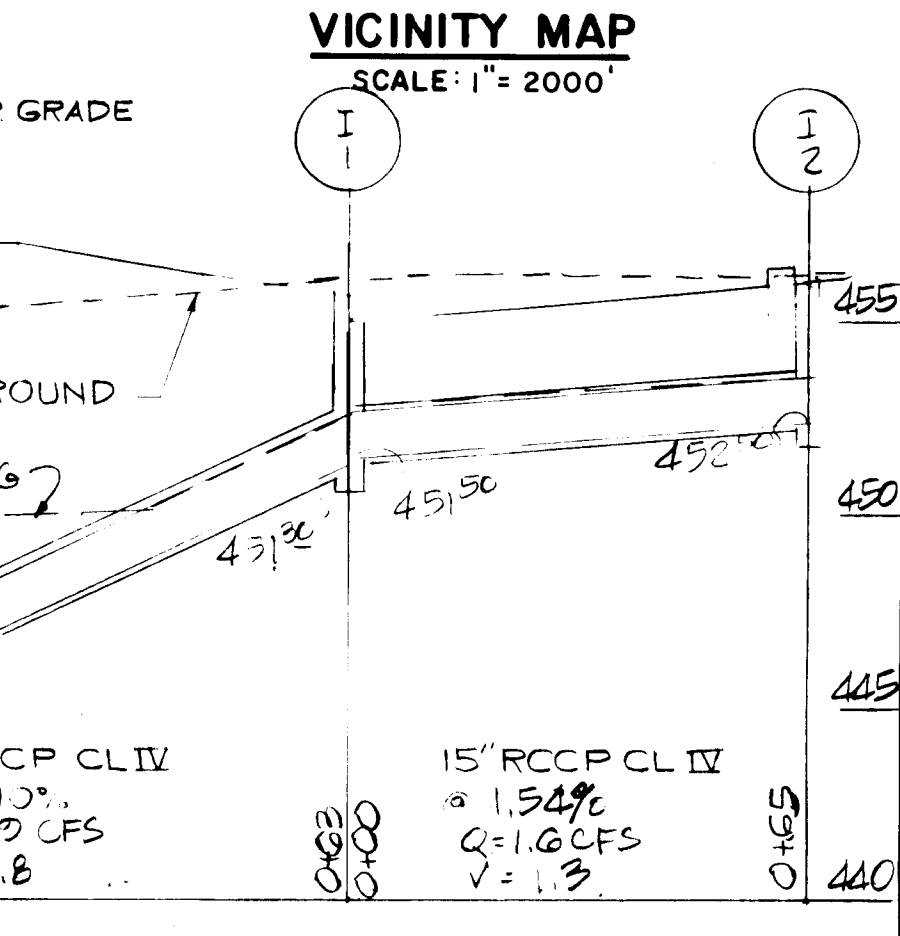
EXISTING	NEW
[Symbol]	[Symbol]
[Symbol]	[Symbol]
[Symbol]	[Symbol]
[Symbol]	[Symbol]
[Symbol]	[Symbol]
[Symbol]	[Symbol]
[Symbol]	[Symbol]
[Symbol]	[Symbol]
[Symbol]	[Symbol]



gva
 george vaeth
 associates, inc
 architect

5501 twin knolls road suite 108
 columbia, maryland 21045

STATE OF MARYLAND
 PROFESSIONAL ENGINEER
 514784



INLET SCHEDULE

NO.	TYPE	INV. IN	INV. OUT	TOP ELEV.
I-1	TYPE "S" COMBINATION HOWARD CO. PLATE SD 4.32	451.50	451.30	455.60
I-2	TYPE "S" COMBINATION HOWARD CO. PLATE SD 4.32	-	452.50	456.60
I-3	TYPE "K" INLET HOWARD CO. PLATE SD 4.13	446.41	446.41	448.01
I-4	TYPE "S" COMBINATION HOWARD CO. PLATE SD 4.32	449.11	449.11	453.76

COORDINATES

NO	NORTH	EAST
1	508083.58	851147.31
2	508262.06	851300.47
3	507988.21	851515.89
4	507929.11	851420.81

WHITNEY CONSULTING ENGINEERS
 BAILEY
 BOX
 MAGNANI

Suite 311 Green Spring Station
 2360 West Joppa Road
 Lutherville, Maryland 21093
 301-296-4200

APPROVED
 PLANNING BOARD
 OF HOWARD COUNTY
 DATE 9-19-84

OWNER AND DEVELOPER
 BRANTLY DEVELOPMENT CORP
 5501 TWIN KNOLLS RD SUITE 100
 COLUMBIA MD 21045

REVISIONS

NO.	DATE	ITEM
1	6/22/84	WATER SEWER & DRAIN CONNECTIONS
2	6/22/84	REVISE DRAIN SYSTEM

BY THE DEVELOPER:
 I HEREBY CERTIFY THAT ALL DEVELOPMENT AND/OR CONSTRUCTION WILL BE DONE ACCORDING TO THESE PLANS, AND THAT ANY RESPONSIBLE PERSONNEL INVOLVED IN THE CONSTRUCTION PROJECT WILL HAVE A CERTIFICATE OF ATTENDANCE AT A DEPARTMENT OF NATURAL RESOURCES APPROVED TRAINING PROGRAM FOR THE CONTROL OF EROSION AND EROSION BEFORE BEGINNING THE PROJECT. I WILL PROVIDE THE HOWARD COUNTY SOIL CONSERVATION DISTRICT WITH AN "AS-BUILT" PLAN OF THE POND WITHIN 30 DAYS OF COMPLETION OF THE POND.

John P. Lipman 11/5/84
 DEVELOPER

BY THE ENGINEER:
 I HEREBY CERTIFY THAT THIS PLAN FOR POND CONSTRUCTION, EROSION AND SEDIMENT CONTROL, REPRESENTS A PRACTICAL AND WORKABLE PLAN BASED ON MY PERSONAL KNOWLEDGE OF THE SITE CONDITIONS. THIS PLAN WAS PREPARED IN ACCORDANCE WITH THE REQUIREMENTS OF THE HOWARD COUNTY SOIL CONSERVATION DISTRICT. I HAVE NOTIFIED THE DEVELOPER THAT HE MUST PROVIDE THE HOWARD COUNTY SOIL CONSERVATION DISTRICT WITH AN "AS-BUILT" PLAN OF THE POND WITHIN 30 DAYS OF COMPLETION.

James M. Kellum 5/1/84
 ENGINEER

THESE PLANS HAVE BEEN REVIEWED FOR THE HOWARD COUNTY SOIL CONSERVATION DISTRICT AND MEET THE TECHNICAL REQUIREMENTS FOR SMALL POND CONSTRUCTION, SOIL PROTECTION AND SEDIMENT CONTROL.

James M. Kellum 11/2/84
 SOIL CONSERVATION DISTRICT

THESE PLANS FOR SMALL POND CONSTRUCTION, SOIL EROSION AND SEDIMENT CONTROL, MEET THE REQUIREMENTS OF THE HOWARD COUNTY SOIL CONSERVATION DISTRICT.

William T. Miller 11/2/84
 HOWARD COUNTY

SEQUENCE OF CONSTRUCTION

1. NOTIFY HOWARD COUNTY TWO WORKING DAYS PRIOR TO BEGINNING ANY WORK
2. INSTALL SEDIMENT CONTROL DEVICES ANY WATER QUALITY CONTROL FOR HIGH FREQUENCY STORMS
3. GRADE SITE
4. INSTALL STORM DRAINS AND STORM WATER MANAGEMENT FACILITIES
5. BEGIN BUILDING CONSTRUCTION
6. INSTALL NEW PAVING
7. SEED & MULCH OR SOD ALL DISTURBED AND UNPAVED AREAS
8. REMOVE SEDIMENT CONTROL MEASURES.

OFFICE BUILDING
 Brantly Development Corporation
 OAKLAND RIDGE INDUSTRIAL PARK
 SECTION 2 LOT 92
 COLUMBIA, HOWARD CO., MD.
 PLAT BOOK NO. 4024

UTILITY PLAN AND STORM WATER MANAGEMENT FACILITY

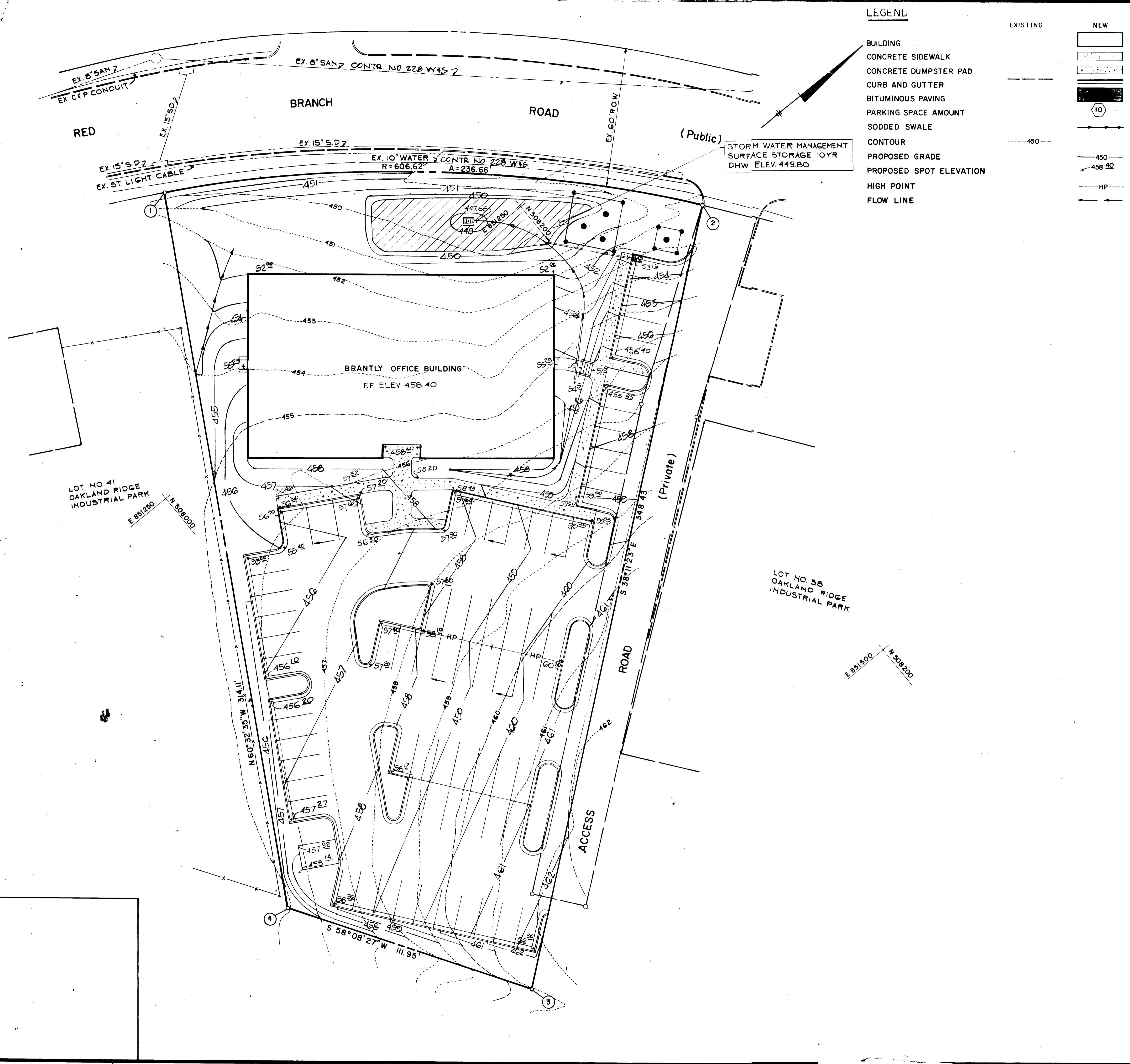
PROJECT NUMBER: [] DRAWING NUMBER: **SD-3**

PRELIMINARY ISSUE
 CONSTRUCTION ISSUE

APPROVED: FOR PUBLIC WATER AND PUBLIC SEWERAGE SYSTEMS
 HOWARD COUNTY DEPARTMENT OF PUBLIC WORKS
John P. Lipman 12-3-84
 COUNTY HEALTH OFFICER

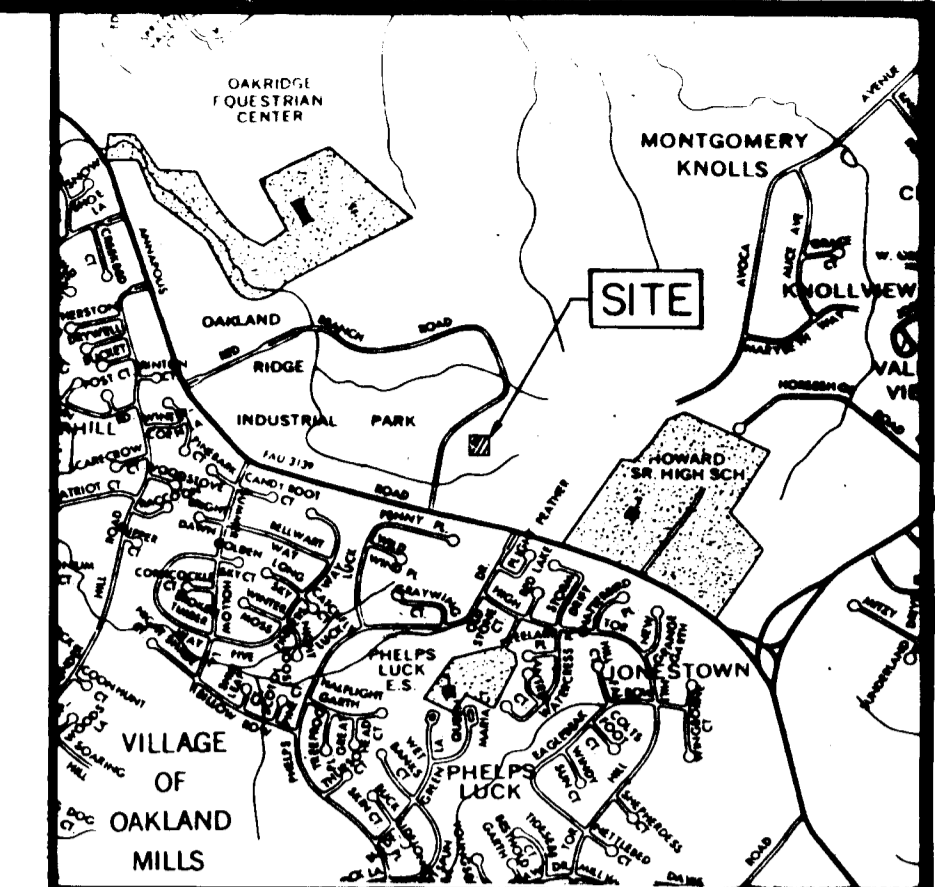
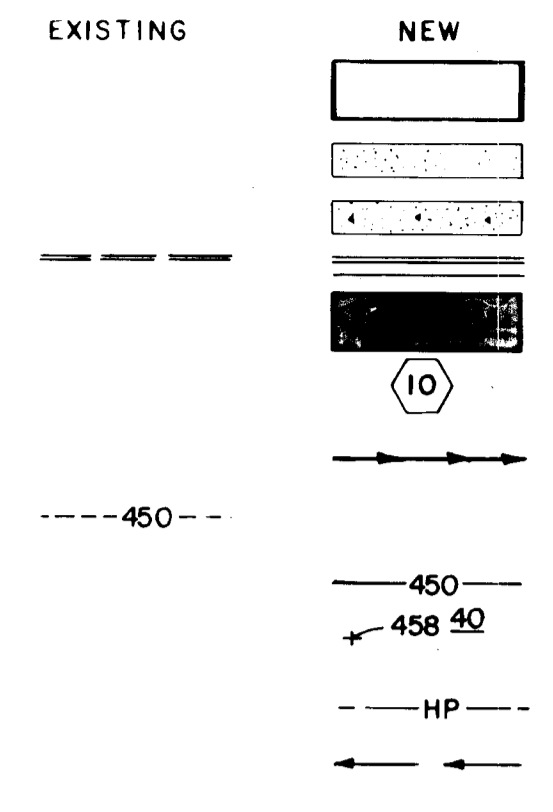
APPROVED: HOWARD COUNTY OFFICE OF PLANNING AND ZONING
John P. Lipman 12-4-84
 PLANNING OFFICER

APPROVED: DIVISION OF LAND DEVELOPMENT AND ZONING ADMINISTRATION
John P. Lipman 12-7-84



LEGEND

- BUILDING
- CONCRETE SIDEWALK
- CONCRETE DUMPSTER PAD
- CURB AND GUTTER
- BITUMINOUS PAVING
- PARKING SPACE AMOUNT
- SODDED SWALE
- CONTOUR
- PROPOSED GRADE
- PROPOSED SPOT ELEVATION
- HIGH POINT
- FLOW LINE



VICINITY MAP
SCALE: 1" = 2000'

gva
george vaeth
associates, inc.
architect

5501 twin knolls road suite 108
columbia, maryland 21045

WHITNEY CONSULTING ENGINEERS
BAILEY
FOX
MAGNANI

Suite 311 Green Spring Station
2360 West Joppa Road
Lutherville, Maryland 21093
301-296-4200

APPROVED
PLANNING BOARD
OF HOWARD COUNTY
DATE: 9-19-84

OWNER AND DEVELOPER
BRANTLY DEVELOPMENT CORP.
5501 TWIN KNOLLS RD SUITE 100
COLUMBIA MD 21045

COORDINATES

NO	NORTH	EAST
1	508083.58	851147.31
2	508262.06	851300.47
3	507988.21	851515.89
4	507929.11	851420.81

SUBDIVISION NAME		SECT./AREA	LOT/PARCEL # 92
OAKLAND RIDGE IND. PARK		2	PARCEL 269
PLAT #	BLOCK #	ZONE	TAX/ZONE MAP
4024	1b	IND.	IND.
ELEV. DIST.		CENSUS TR.	
2		6023.02	
WATER CODE		SEWER CODE	

APPROVED: FOR PUBLIC WATER AND PUBLIC SEWERAGE AND STORM DRAINAGE SYSTEMS AND ROADS.

HOWARD COUNTY DEPARTMENT OF PUBLIC WORKS

Michael Nummy 11-29-84
DIRECTOR

William J. Ryan 12-28-84
CHIEF, BUREAU OF ENGINEERING

APPROVED: FOR PUBLIC WATER AND PUBLIC SEWERAGE SYSTEMS.

HOWARD COUNTY HEALTH DEPARTMENT

Joseph Boyd 12-3-84
COUNTY HEALTH OFFICER

APPROVED: HOWARD COUNTY OFFICE OF PLANNING AND ZONING.

PLANNING DIRECTOR

Donald A. Smith 12-4-84

CHIEF, DIVISION OF LAND DEVELOPMENT AND ZONING ADMINISTRATION

John W. Hulsebosch 12-4-84

OFFICE BUILDING
Brantly Development Corporation
OAKLAND RIDGE INDUSTRIAL PARK
SECTION 2 LOT 92
COLUMBIA, HOWARD CO., MD.
PLAT BOOK NO. 4024

GRADING PLAN

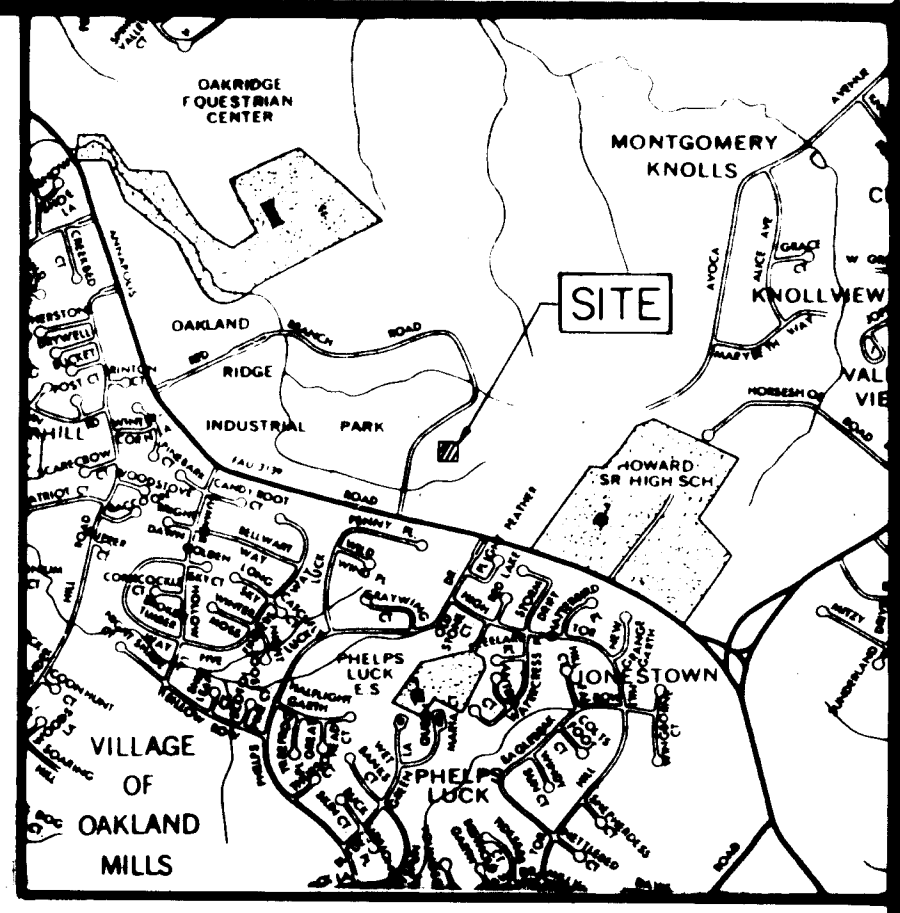
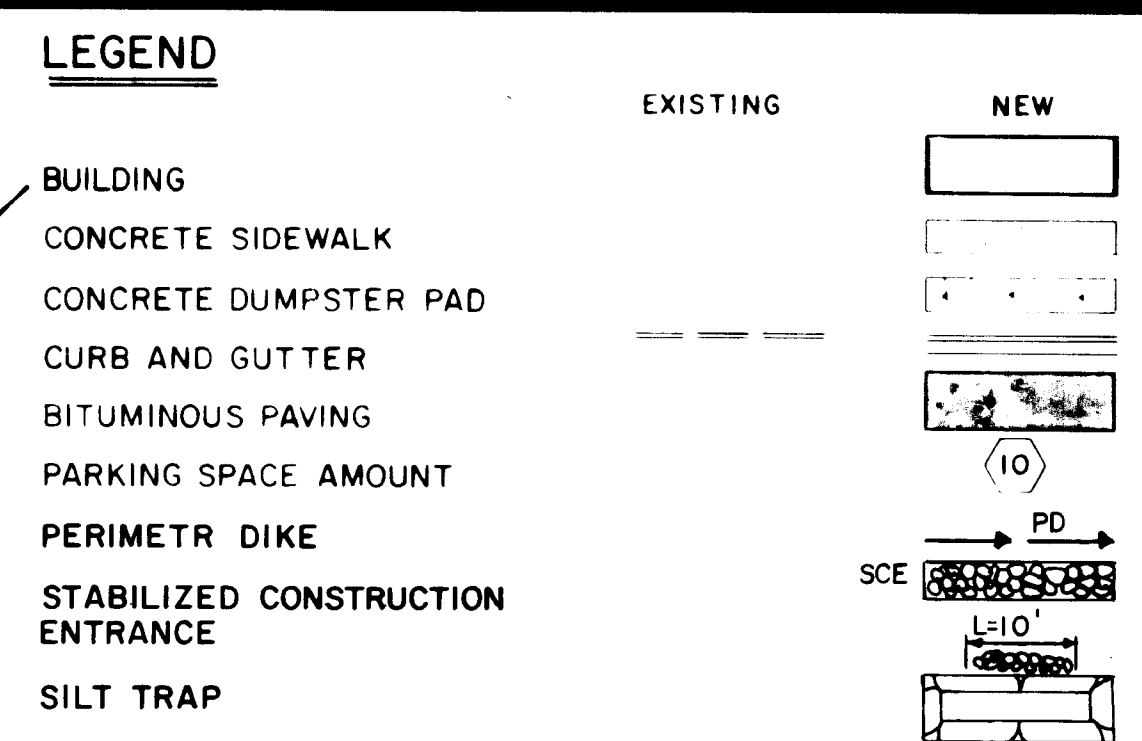
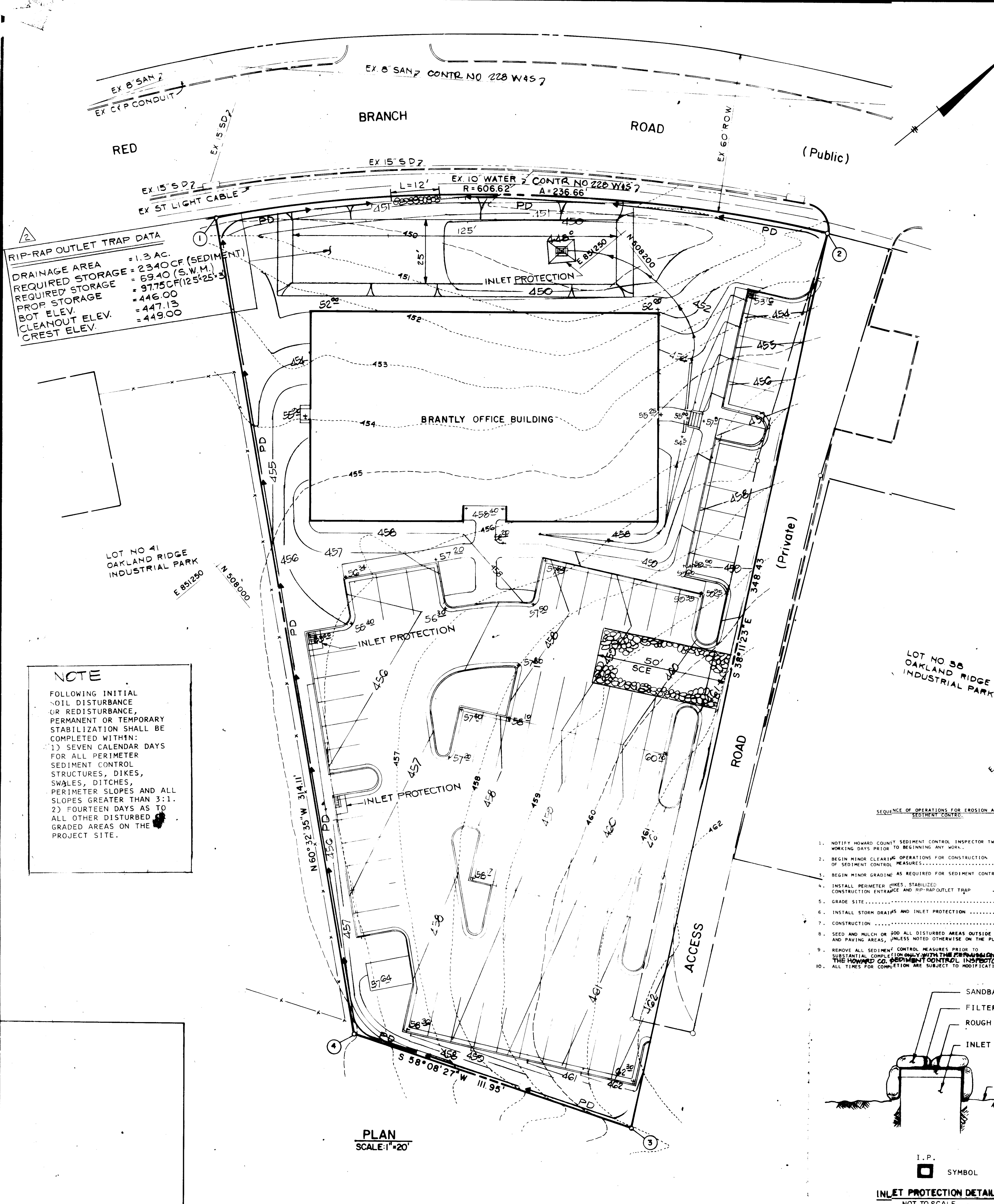
PROJECT NUMBER: _____ DRAWING NUMBER: _____

PRELIMINARY ISSUE

CONSTRUCTION ISSUE

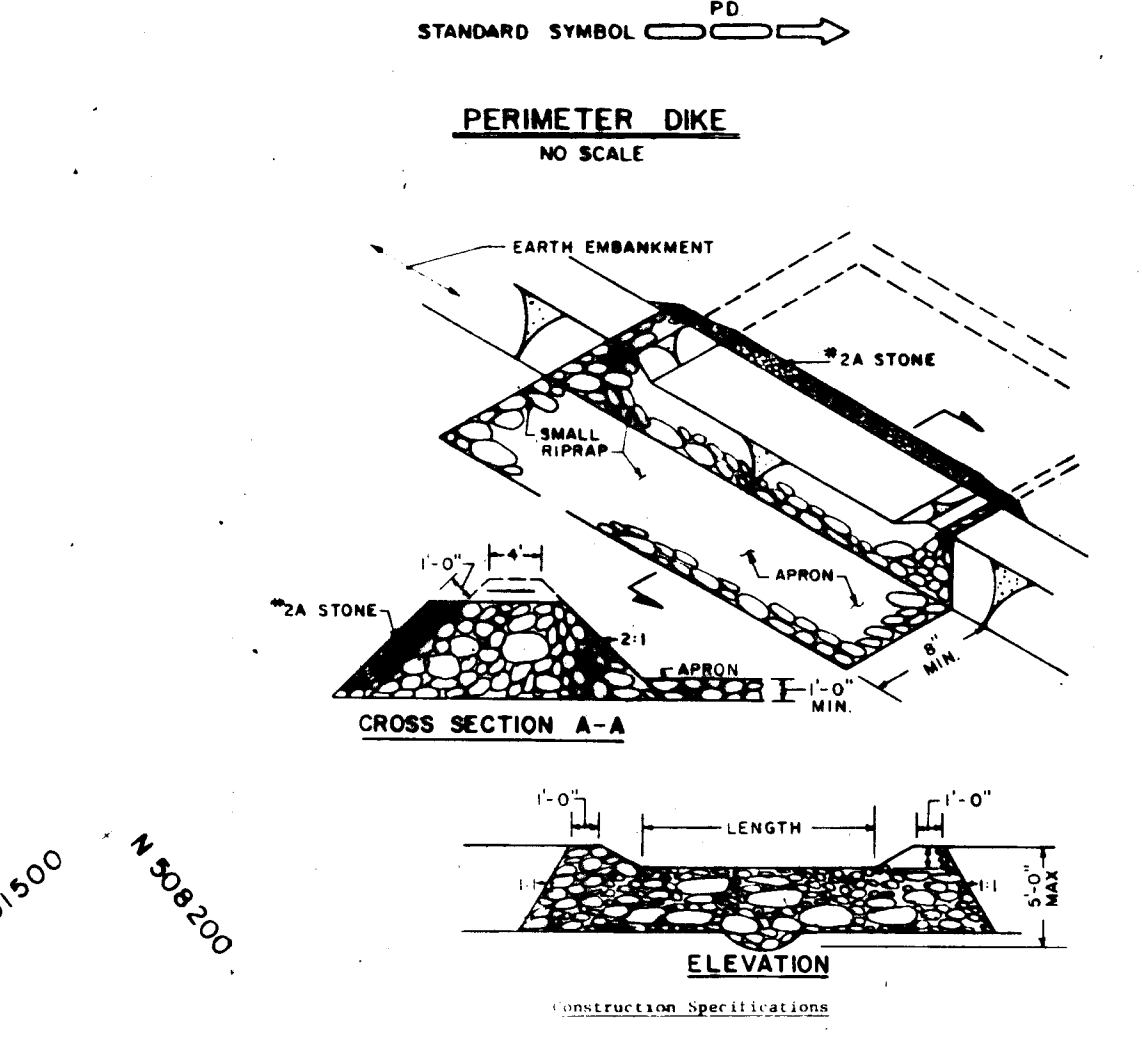
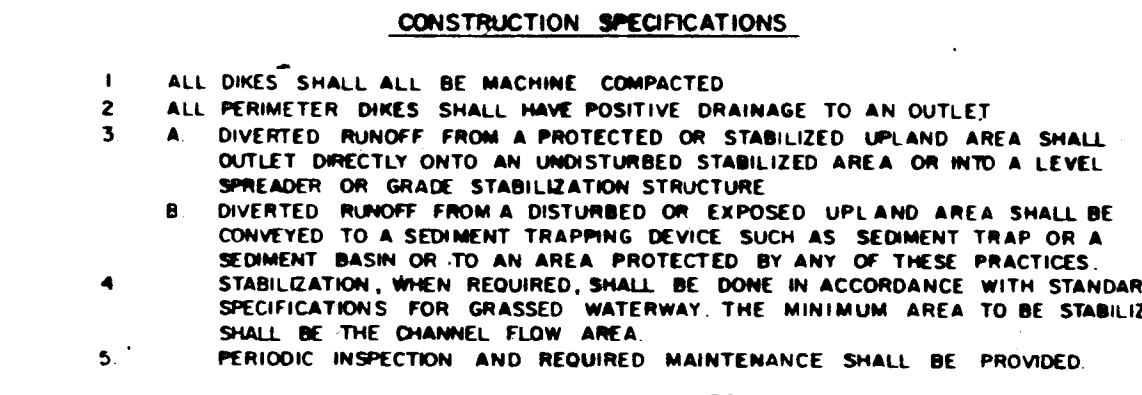
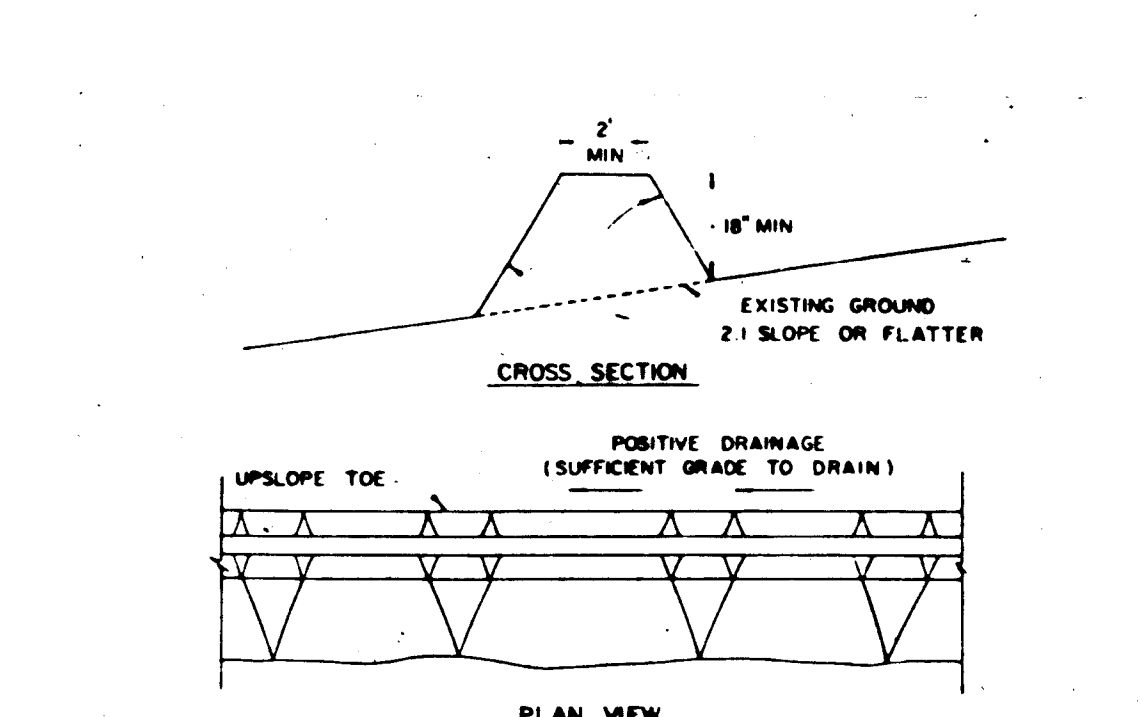
SD-4

SCALE: 1" = 20'



gva
george vaeth
associates, inc
architect

5501 twin knolls road suite 108
columbia, maryland 21045



NOTE

FOLLOWING INITIAL SOIL DISTURBANCE OR REDISTURBANCE, PERMANENT OR TEMPORARY STABILIZATION SHALL BE COMPLETED WITHIN:

- SEVEN CALENDAR DAYS FOR ALL PERIMETER SEDIMENT CONTROL STRUCTURES, DIKES, SWALES, DITCHES, PERIMETER SLOPES AND ALL SLOPES GREATER THAN 3:1.
- FOURTEEN DAYS AS TO ALL OTHER DISTURBED GRADED AREAS ON THE PROJECT SITE.

GENERAL NOTES:

- REFER TO USDA-SOIL CONSERVATION SERVICE STANDARDS AND SPECIFICATIONS FOR SOIL EROSION AND SEDIMENT CONTROL, IN DEVELOPING THE BEST PRACTICES AND DETAILED SPECIFICATIONS FOR EACH PRACTICE SPECIFIED HEREIN.
- WITH THE APPROVAL OF THE SEDIMENT CONTROL INSPECTOR, MINOR FIELD ADJUSTMENTS CAN BE MADE TO INSURE THE CONTROL OF ANY SEDIMENT COMING IN SEDIMENT CONTROL PRACTICES REQUIRE PRIOR APPROVAL OF THE SEDIMENT CONTROL INSPECTOR AND THE HOWARD COUNTY SOIL CONSERVATION DISTRICT.
- AT THE END OF EACH WORKING DAY, ALL SEDIMENT CONTROL PRACTICES WILL BE INSPECTED AND LEFT IN OPERATIONAL CONDITION.
- ANY DISTURBED EARTH LEFT IDLE FOR PERIODS EXCEEDING 30 DAYS SHALL BE STABILIZED ACCORDING TO TEMPORARY STABILIZATION SPECIFICATIONS.
- ANY CHANGE TO THE GRADING PROPOSED ON THIS PLAN REQUIRES RE-SUBMISSION TO HOWARD COUNTY SOIL CONSERVATION DISTRICT FOR APPROVAL.
- DUST CONTROL WILL BE PROVIDED FOR ALL DISTURBED AREAS. REFER TO USDA SOIL CONSERVATION SERVICE STANDARDS AND SPECIFICATIONS FOR SOIL EROSION AND SEDIMENT CONTROL, IN DEVELOPING THE BEST PRACTICES AND DETAILED SPECIFICATIONS FOR EACH PRACTICE SPECIFIED HEREIN.
- ANY VARIATION FROM THE SEQUENCE OF OPERATIONS STATED ON THIS PLAN REQUIRES THE APPROVAL OF THE SEDIMENT CONTROL INSPECTOR AND THE HOWARD COUNTY SOIL CONSERVATION DISTRICT PRIOR TO THE INITIATION OF THE CHANGE.

REVIEWED FOR HOWARD COUNTY SOIL CONSERVATION DISTRICT AND MEETS TECHNICAL REQUIREMENTS.

James M. Walker 11/24/84
HOWARD COUNTY SOIL CONSERVATION SERVICE

APPROVED:

John T. Gable 11/24/84
HOWARD COUNTY SOIL CONSERVATION DISTRICT

DEVELOPER'S CERTIFICATE

I HEREBY CERTIFY THAT ALL DEVELOPMENT AND CONSTRUCTION WILL BE DONE ACCORDING TO THIS PLAN FOR EROSION AND SEDIMENT CONTROL AND SEDIMENT CONTROL AND BEST MANAGEMENT PRACTICES INVOLVED IN THE CONSTRUCTION PROJECT WILL HAVE A CERTIFICATE OF ATTENDANCE AT A PERIODIC TRAINING PROGRAM FOR THE CONTROL OF EROSION AND SEDIMENT BEFORE BEGINNING THE PROJECT. I ALSO AUTHORIZE PERIODIC ON-SITE INSPECTION BY THE HOWARD COUNTY SOIL CONSERVATION DISTRICT OR THEIR AUTHORIZED AGENTS AS DEEMED NECESSARY.

Paul L. Gable 11/24/84
SIGNATURE OF DEVELOPER DATE

ENGINEER'S CERTIFICATE

I HEREBY CERTIFY THAT THIS PLAN FOR EROSION AND SEDIMENT CONTROL REPRESENTS A PRACTICAL AND WORKABLE PLAN BASED ON MY PERSONAL KNOWLEDGE OF THE SITE CONDITIONS AND THAT IT WAS PREPARED IN ACCORDANCE WITH THE REQUIREMENTS OF THE HOWARD COUNTY SOIL CONSERVATION DISTRICT.

Paul L. Gable 11/24/84
SIGNATURE OF ENGINEER DATE

WHITNEY CONSULTING ENGINEERS
Suits 311 Green Spring Station
2360 West Jeppa Road
Lutherville, Maryland 21093
301-296-4200

BAILEY FOX MAGNANI

APPROVED
PLANNING BOARD
OF HOWARD COUNTY
DATE 9-19-84
James M. Walker

OWNER AND DEVELOPER
BRANTLY DEVELOPMENT CORP
5501 TWIN KNOLLS RD SUITE 100
COLUMBIA MD 21045

REVISIONS

NO	DATE	DESCRIPTION
1	6/22/84	Delete Dike Along Private
2	8/14/84	REVISED TRAP VOLUME

COORDINATES

NO	NORTH	EAST
1	508083.58	851147.31
2	508262.06	851300.47
3	507988.21	851515.89
4	507929.11	851420.81

OAKLAND RIDGE IND. PARK

PLAT 18, BLOCK 18, LOT 18, IND. 30, 2, G023.02

APPROVED FOR PUBLIC WATER AND PUBLIC SEWERAGE AND STORM DRAINAGE SYSTEMS AND ROADS:

HOWARD COUNTY DEPARTMENT OF PUBLIC WORKS
John F. Neenan 11-28-84
CHIEF, BUREAU OF ENGINEERING

APPROVED FOR PUBLIC WATER AND PUBLIC SEWERAGE SYSTEMS:

HOWARD COUNTY HEALTH DEPARTMENT
John Pagan 12-3-84
PLANNING OFFICER

APPROVED: HOWARD COUNTY OFFICE OF PLANNING AND ZONING
James M. Walker 12-4-84
PLANNING DIRECTOR
John M. Walker 12-4-84
CHIEF, DIVISION OF PLANNING AND DEVELOPMENT

OFFICE BUILDING
Brantly Development Corporation
OAKLAND RIDGE INDUSTRIAL PARK
SECTION 2 LOT 92
COLUMBIA, HOWARD CO., MD.
PLAT BOOK NO. 4024

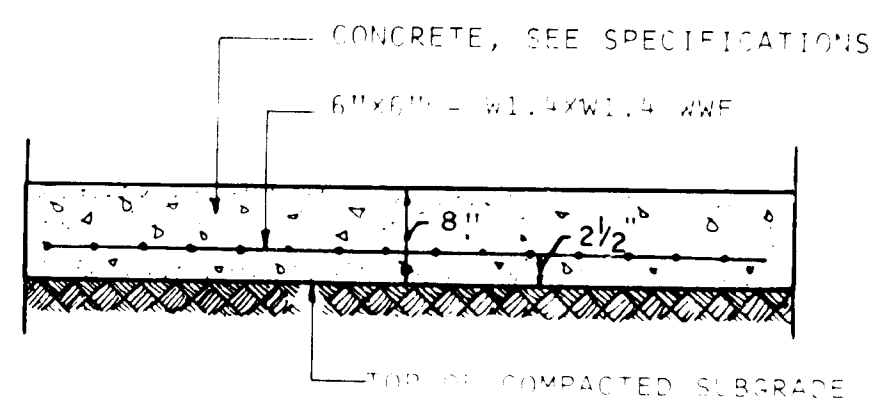
SEDIMENT CONTROL PLAN

PROJECT NUMBER: _____ DRAWING NUMBER: _____

PRELIMINARY ISSUE: _____

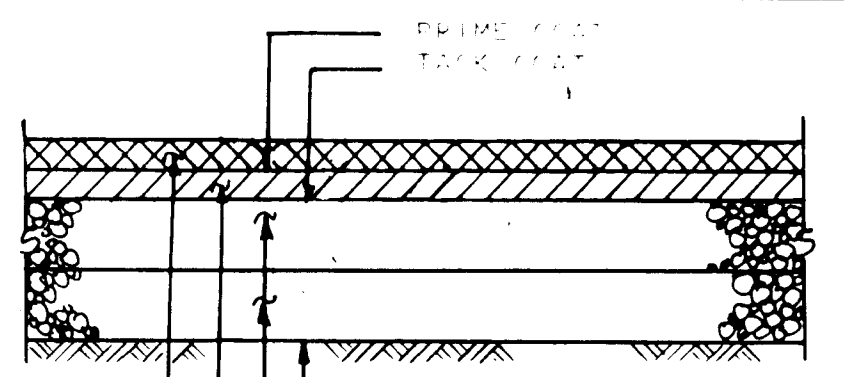
CONSTRUCTION ISSUE: **SD-5**

AS NOTED



SECTION
NOT TO SCALE

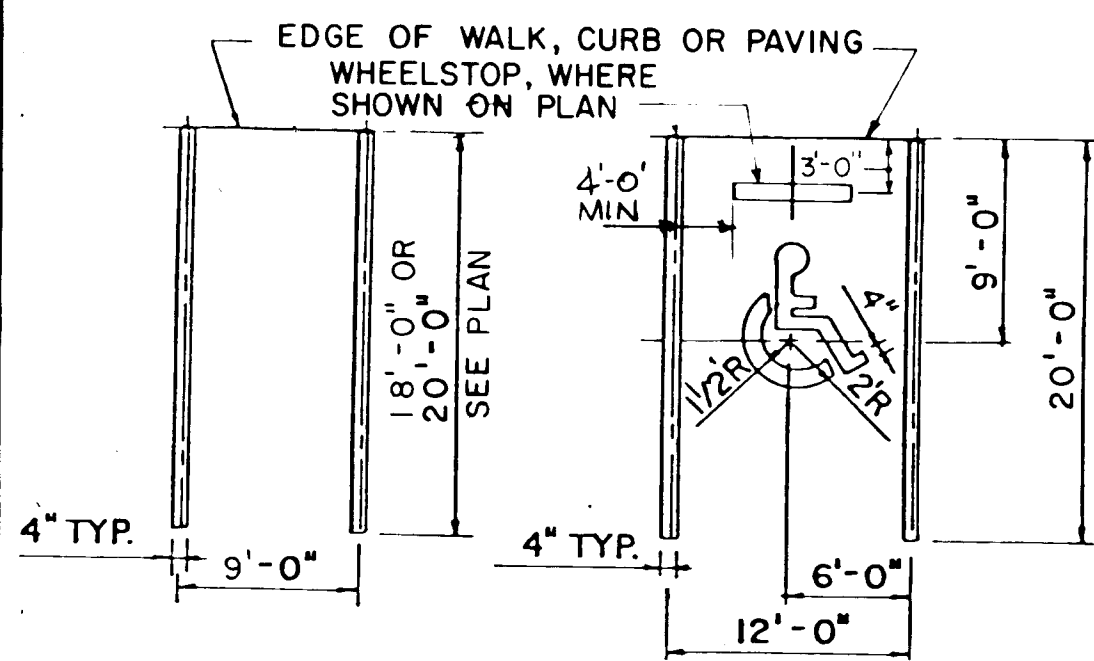
1 CONCRETE DUMPSTER PAD DETAIL



SECTION
NOT TO SCALE

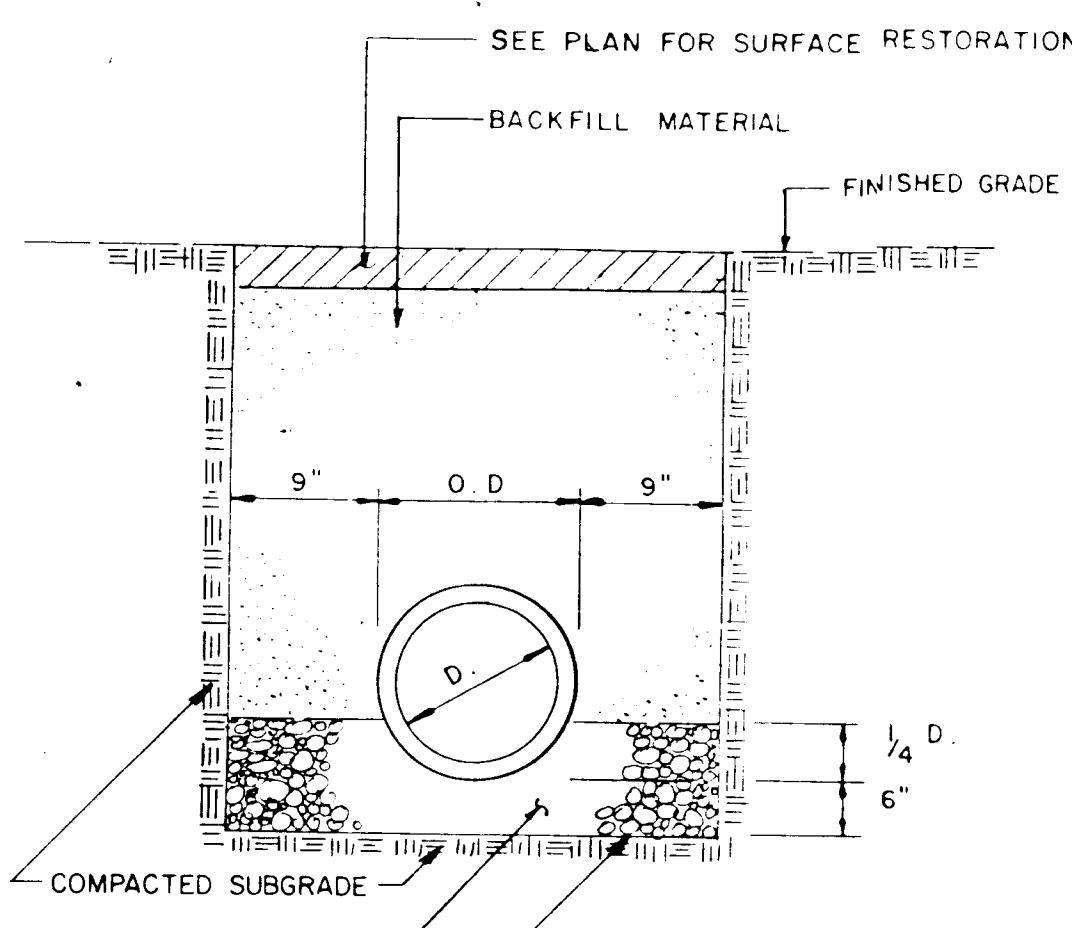
2 BITUMINOUS CONCRETE PAVING DETAIL

PAINT IS TO BE YELLOW TRAFFIC PAINT APPLIED IN ACCORDANCE WITH THE MANUFACTURER'S RECOMMENDATIONS. (TWO (2) COATS REQUIRED)



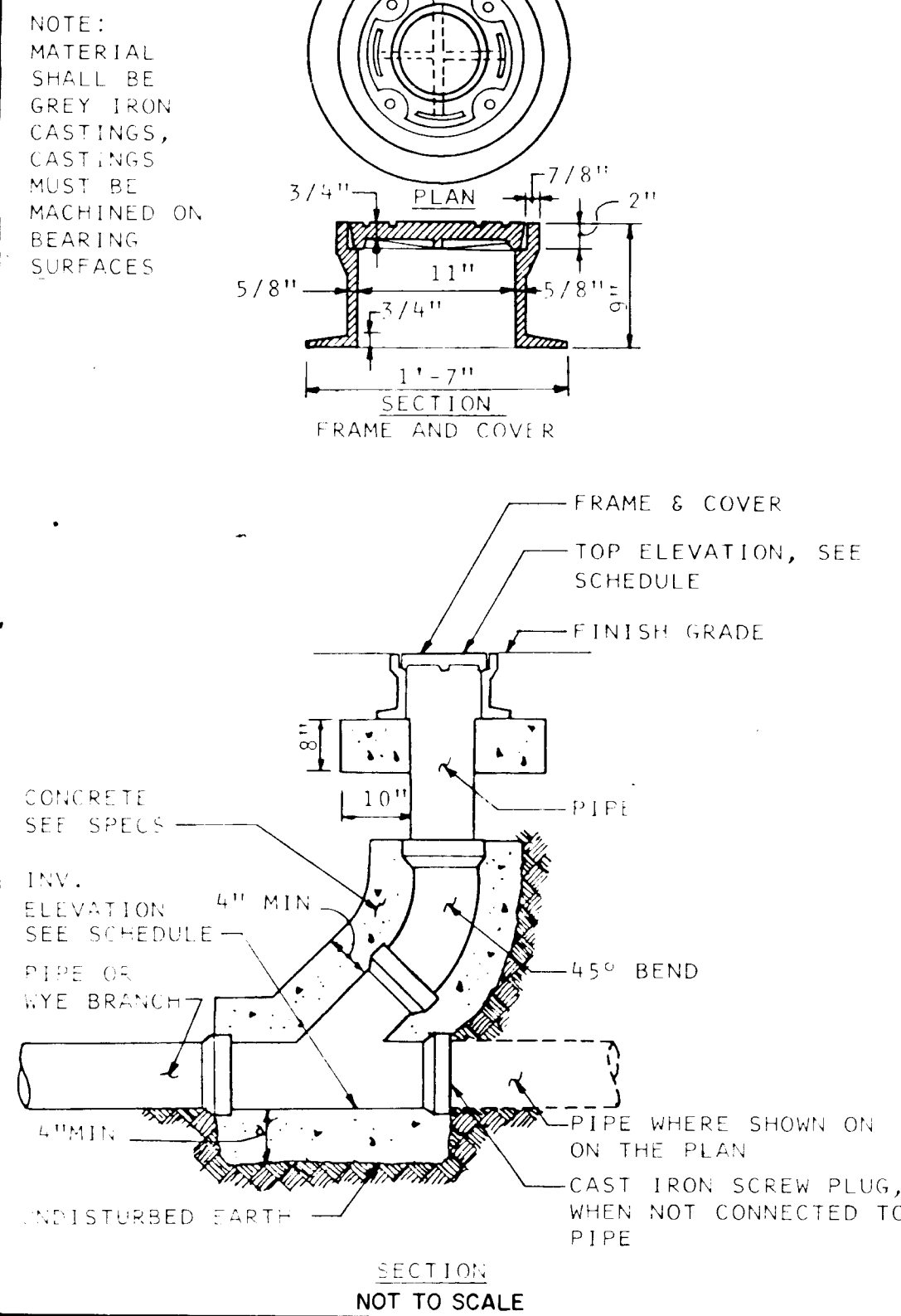
PERPENDICULAR PARKING
HANDICAPPED PARKING
NOT TO SCALE

3 PAVEMENT MARKINGS DETAIL



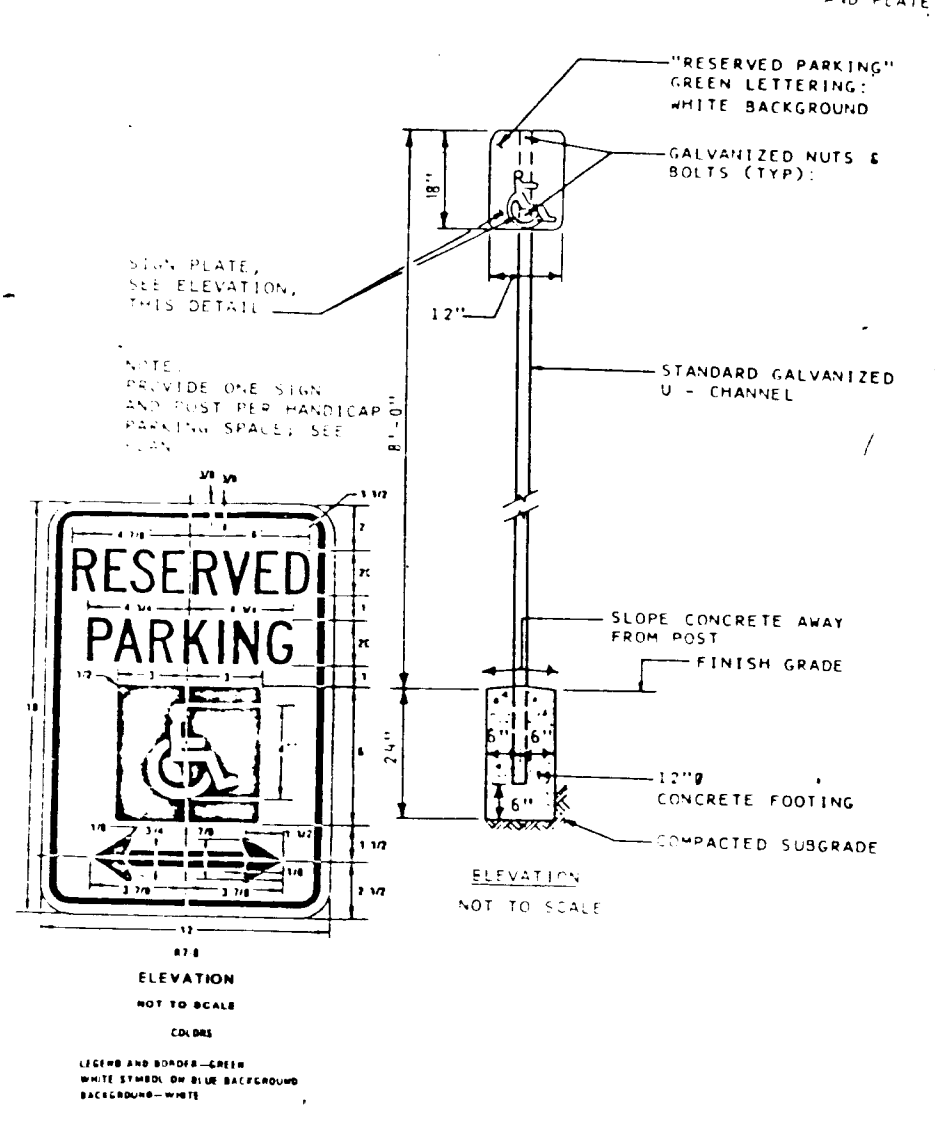
SECTION
NOT TO SCALE

4 TRENCH DETAIL



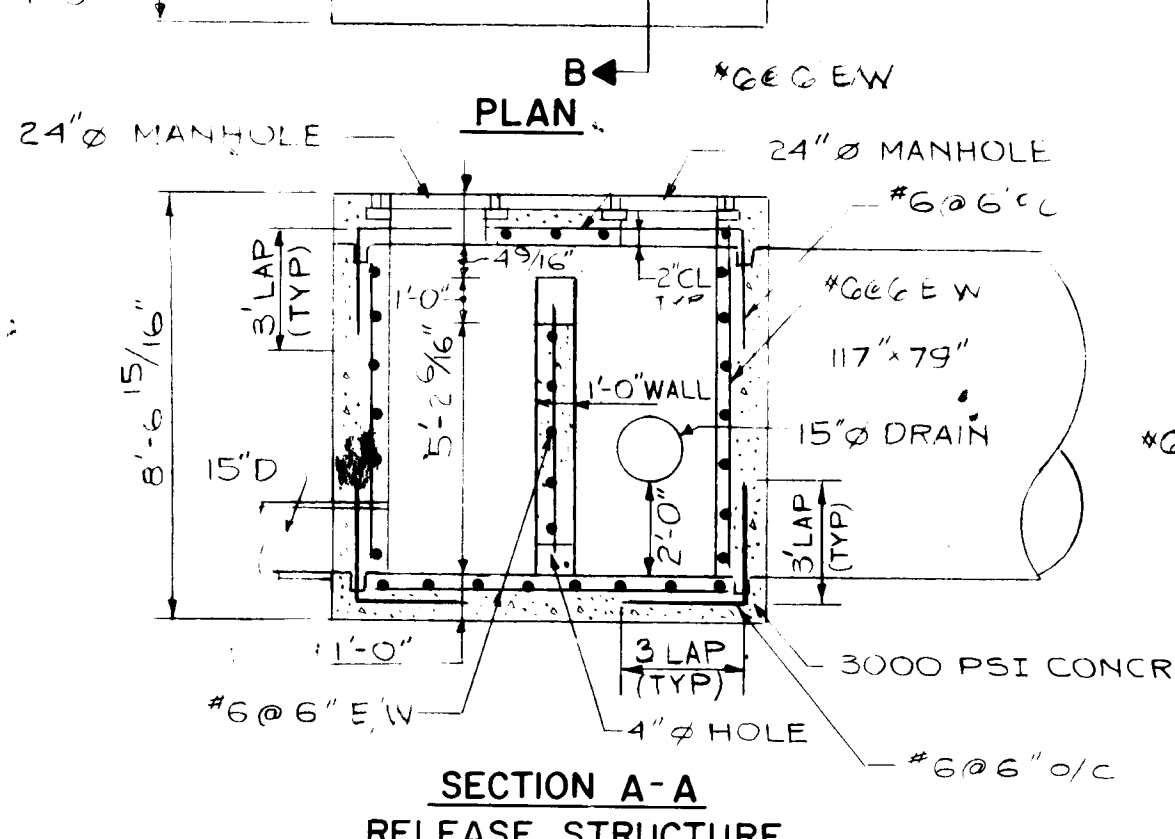
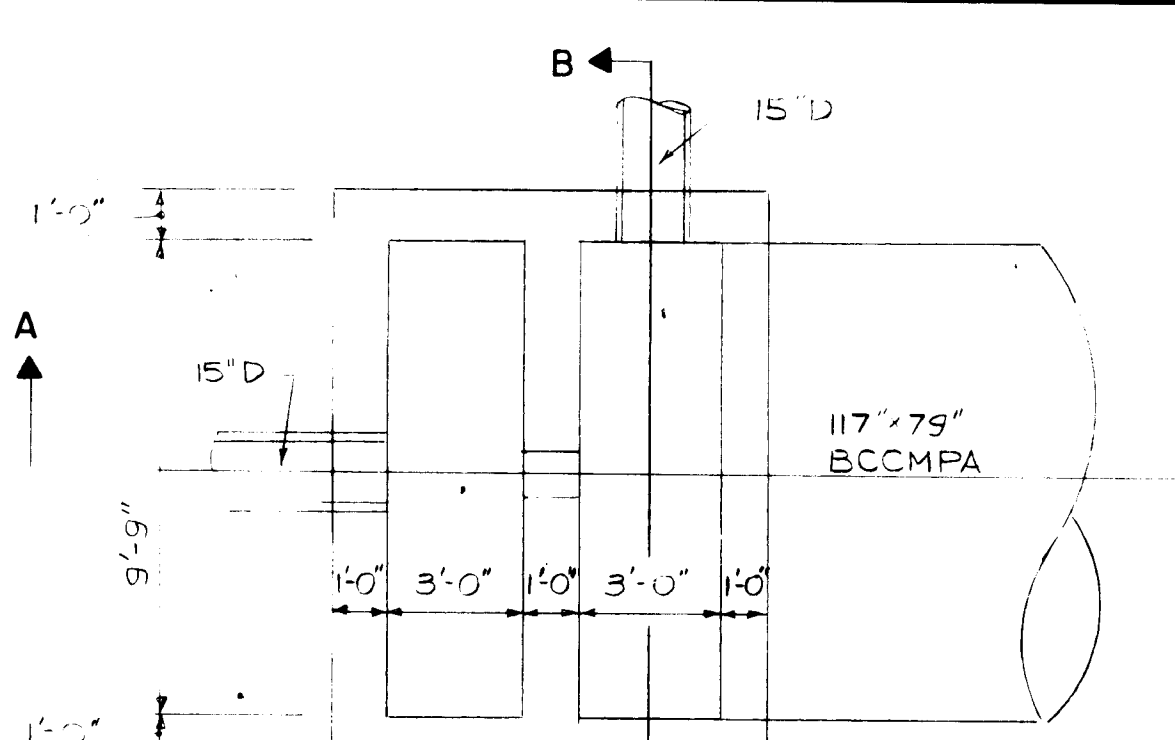
SECTION
NOT TO SCALE

5 CLEANOUT DETAIL

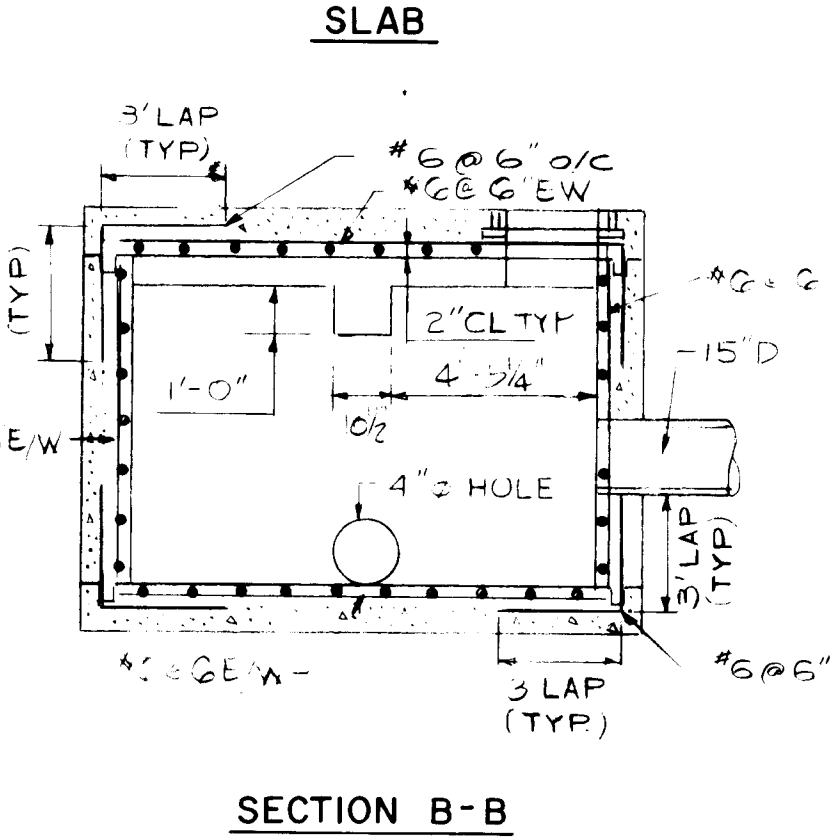
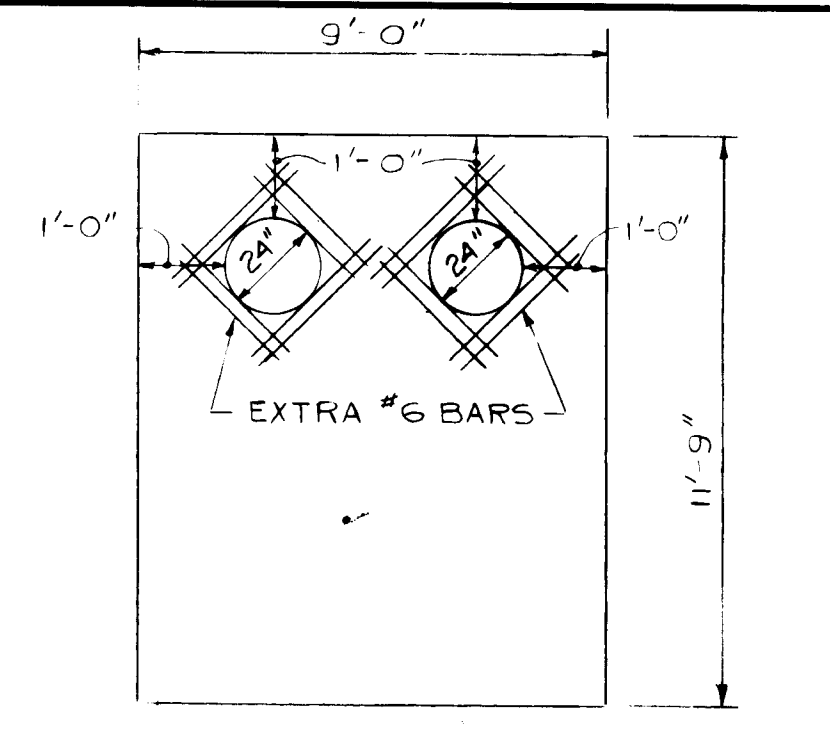


SECTION
NOT TO SCALE

6 HANDICAP SIGN AND PLATE DETAIL

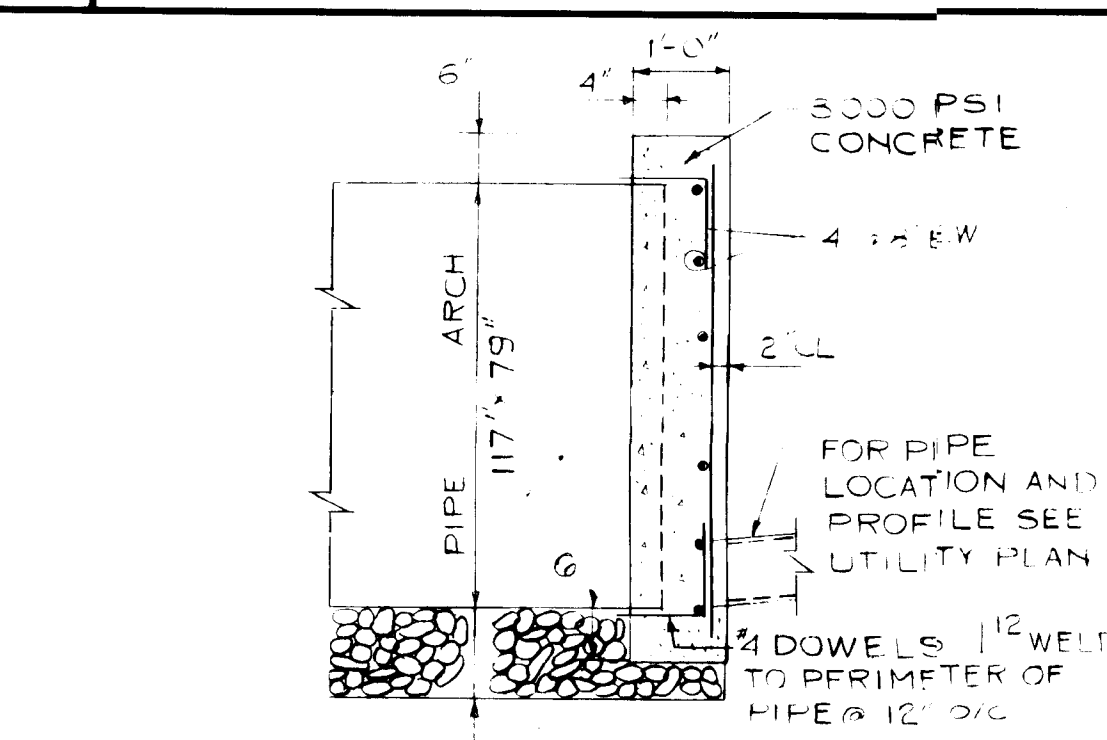


SECTION A-A
RELEASE STRUCTURE

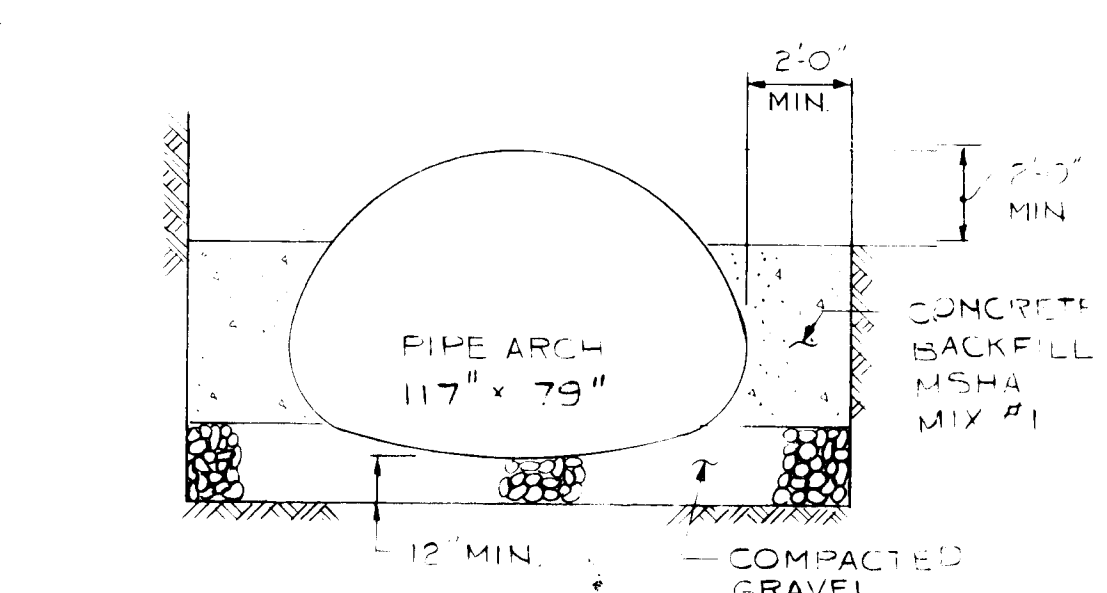


SECTION B-B

NOT TO SCALE

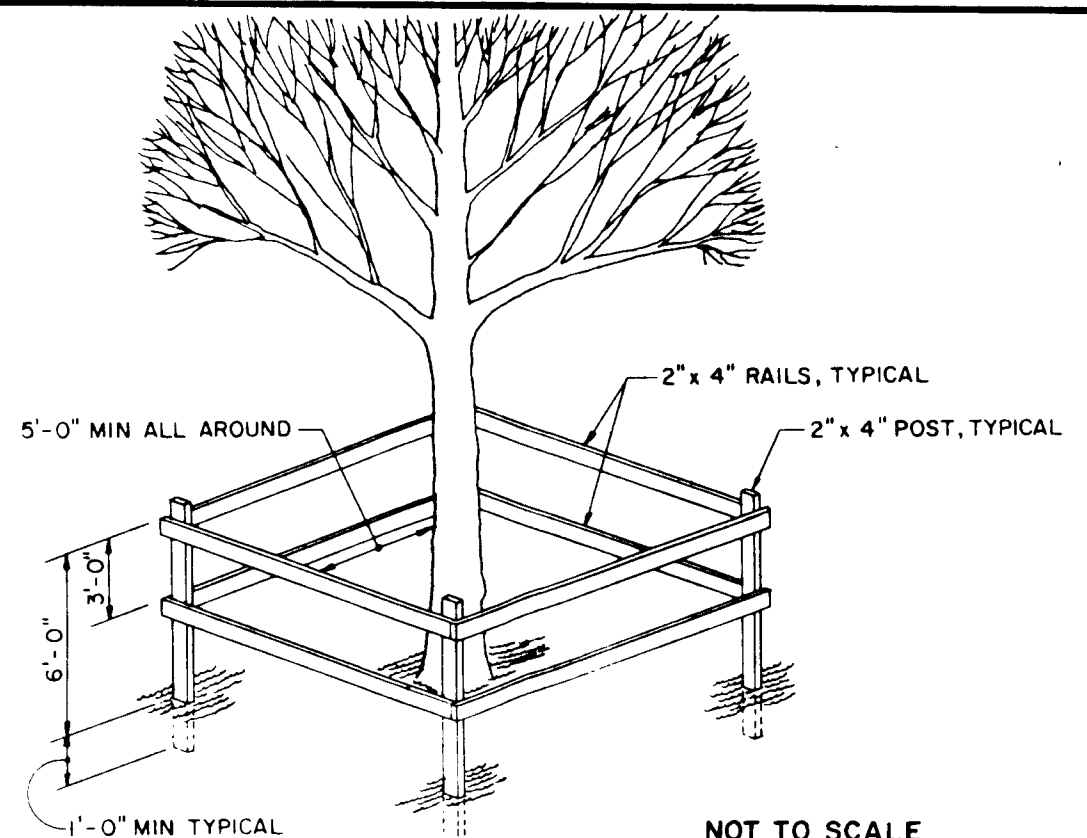


SECTION THRU CONC. BULKHEAD



PIPE ARCH BALLAST DETAIL

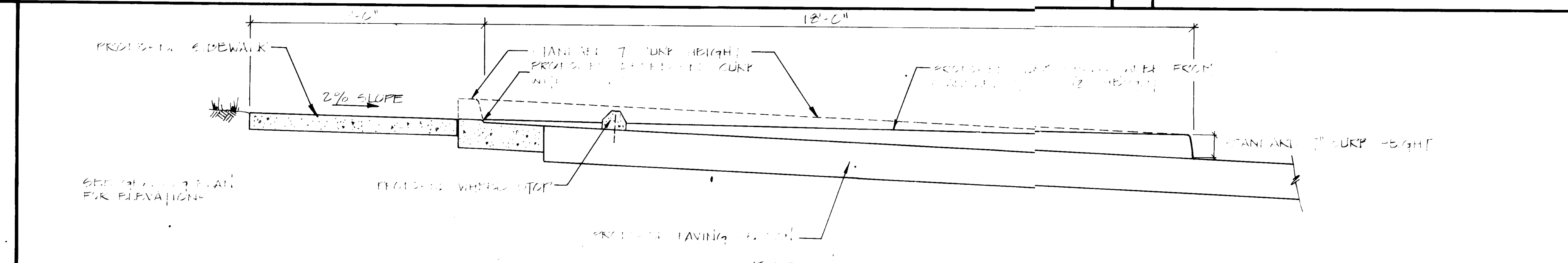
8 CONCRETE WHEEL STOP DETAIL



NOT TO SCALE

9 TREE PROTECTION DETAIL

7 STORM WATER MANAGEMENT DETAILS



10 HANDICAPPED ACCESS DETAIL

gva
george vaeth
associates, inc.
architect

5501 twin knolls road suite 108
columbia, maryland 21045



HITNEY
AILEY
FOX
MAGNANI
CONSULTING ENGINEERS
Suite 311 Green Spring Station
2360 West Joppa Road
Lutherville, Maryland 21093
301-296-4200

APPROVED
PLANNING BOARD
OF HOWARD COUNTY
DATE 9-19-84
[Signature]

OWNER AND DEVELOPER
BRANTLY DEVELOPMENT CORP.
5501 TWIN KNOLLS RD SUITE 100
COLUMBIA MD 21045

REVISIONS		
NO.	DATE	ITEM

OFFICE BUILDING
Brantly Development
Corporation
OAKLAND RIDGE
INDUSTRIAL PARK
SECTION 2 LOT 92
COLUMBIA, HOWARD CO., MD.
PLAT BOOK NO. 4024

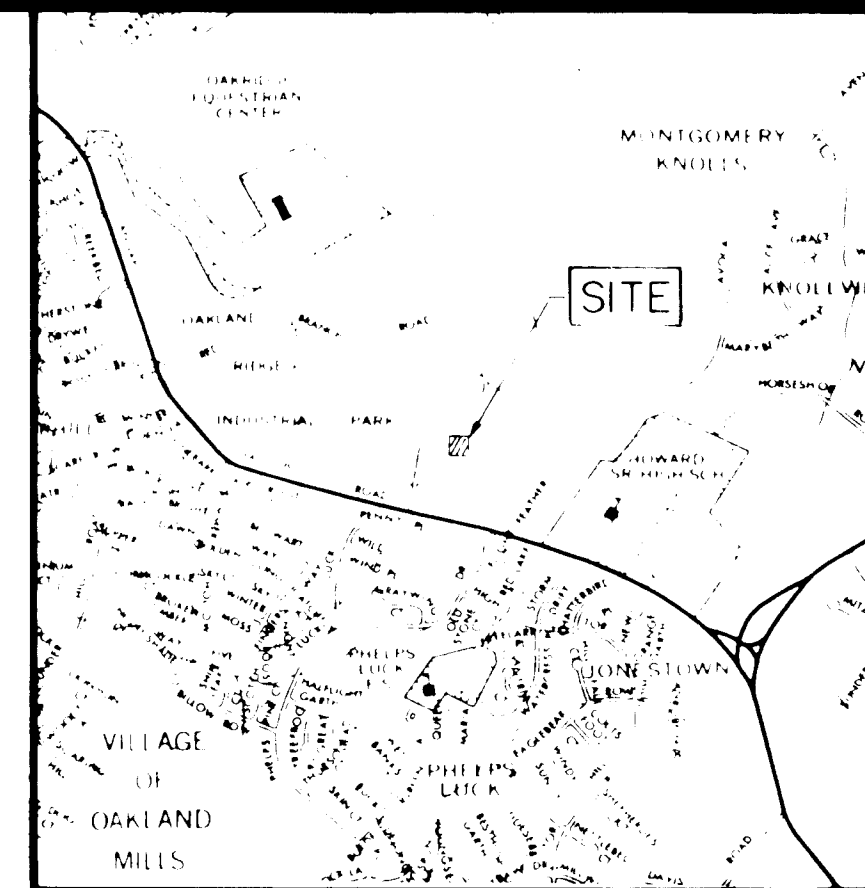
DETAILS	
PROJECT NUMBER	DRAWING NUMBER
PRELIMINARY ISSUE	
CONSTRUCTION ISSUE	SD-6
SCALE	AS NOTED

APPROVED FOR PUBLIC WATER AND PUBLIC SEWERAGE AND STORM DRAINAGE SYSTEMS AND ROADS.
HOWARD COUNTY DEPARTMENT OF PUBLIC WORKS
[Signature] 11-22-84
DIRECTOR
APPROVED FOR PUBLIC WATER AND PUBLIC SEWERAGE SYSTEMS.
HOWARD COUNTY DEPARTMENT OF PUBLIC WORKS
[Signature] 12-3-84
CHIEF, BUREAU OF ENGINEERING
APPROVED FOR PUBLIC WATER AND PUBLIC SEWERAGE SYSTEMS.
HOWARD COUNTY DEPARTMENT OF PLANNING AND ZONING
[Signature] 12-4-84
PLANNING DIRECTOR
APPROVED FOR PUBLIC WATER AND PUBLIC SEWERAGE SYSTEMS.
HOWARD COUNTY DEPARTMENT OF PLANNING AND ZONING
[Signature] 12-4-84
CHIEF, DIVISION OF LAND DEVELOPMENT AND ZONING ADMINISTRATION

SDP-84-273c

LEGEND

- EXISTING
- NEW
- BUILDING
- CONCRETE SIDEWALK
- CONCRETE DUMPSTER PAD
- CURB AND GUTTER
- ILLUMINOUS PAVING
- PARKING SPACE AMOUNT



VICINITY MAP
SCALE 1" = 2000'

george vaeth associates, inc architect
15501 twin knolls road suite 108
columbia, maryland 21045

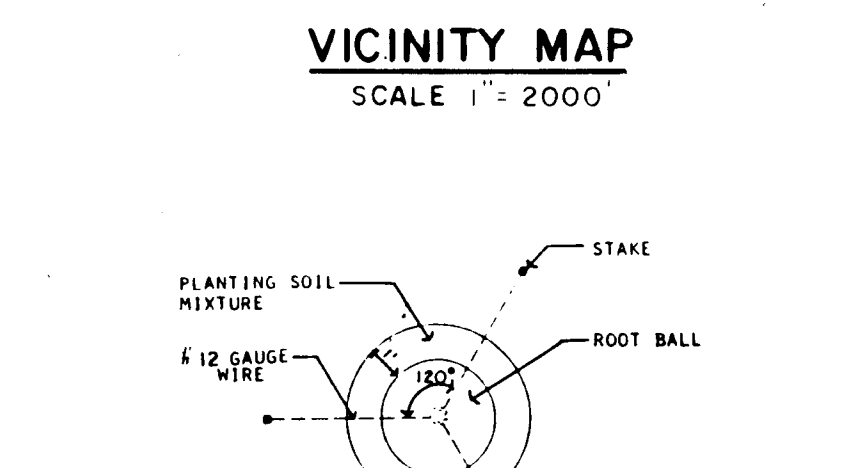
WHITNEY CONSULTING ENGINEERS
Suite 311 Green Spring Station
2360 West Joppa Road
Luttrellville, Maryland 21093
301-296-4200

APPROVED
PLANNING BOARD
OF HOWARD COUNTY
DATE 9-19-84

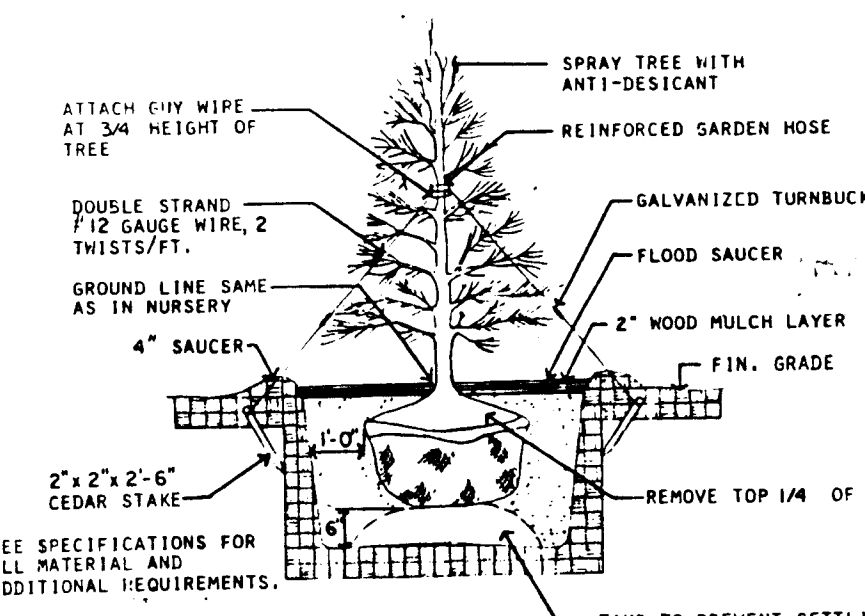
OWNER AND DEVELOPER
BRANTLY DEVELOPMENT CORP.
5501 TWIN KNOLLS RD SUITE 100
COLUMBIA MD 21045

REVISIONS

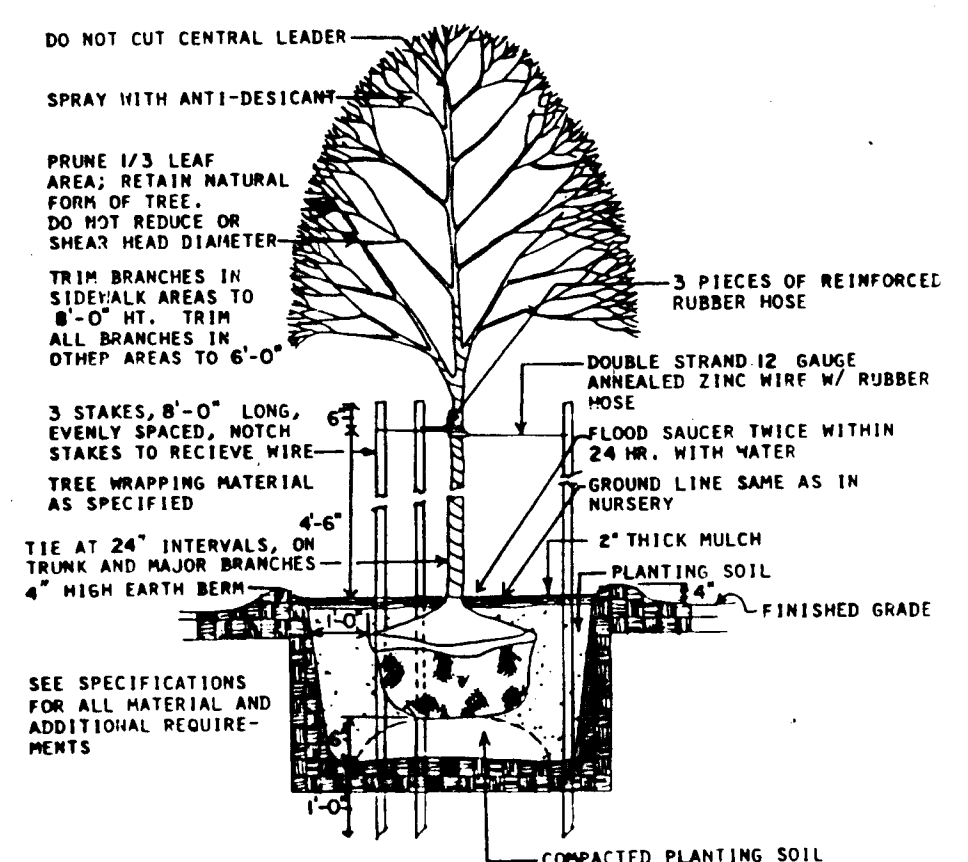
NO.	DATE	REVISION
1	7/17/84	REVISE PLANTING PLAN TO REFLECT CHANGES TO UTILITY LINES



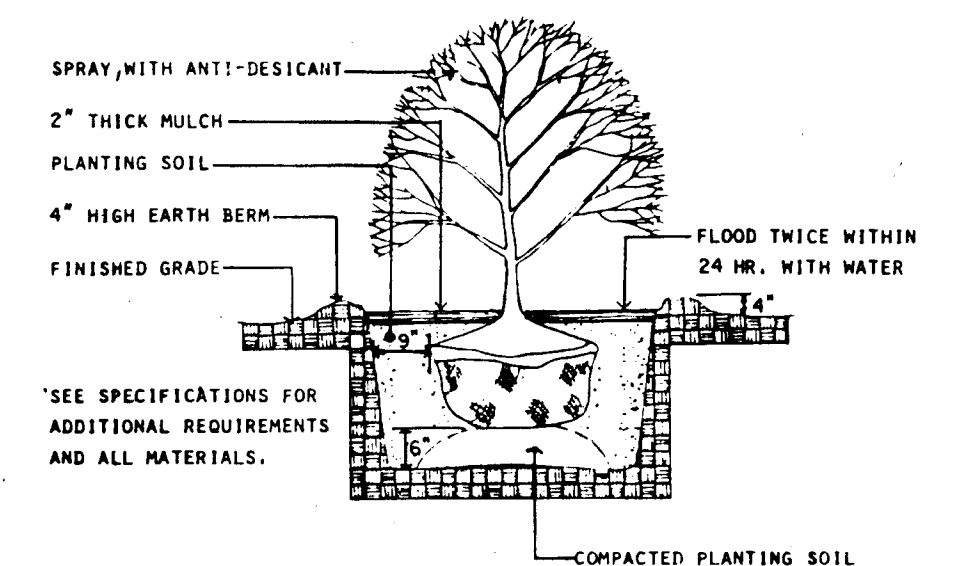
STAKING PLAN
NOT TO SCALE



EVERGREEN TREE DETAIL
NOT TO SCALE



TREE PLANTING DETAIL
NOT TO SCALE



SHRUB PLANTING DETAIL
NOT TO SCALE

NOTE:
THE CONTRACTOR SHALL VERIFY THE LOCATION OF ALL UTILITY LINES BEFORE INSTALLING PLANT MATERIALS.
THE PLANTING AND SIZE OF PLANTS, SPREAD OF ROOTS, AND SIZE OF BALLS SHALL BE IN ACCORDANCE WITH THE STANDARDS OF THE AMERICAN ASSOCIATION OF NURSERMEN. INCLUDE SPECIFICATIONS FOR ADDITIONAL INFORMATION.

PLANT LIST

KEY	QUAN.	BOTANICAL NAME COMMON NAME	SIZE	ROOT	REMARKS
QR	25	QUERCUS RUBRA (BOREALIS) NORTHERN RED OAK	2 1/2\"/>		

COORDINATES

NO.	NORTH	EAST
1	508083.58	851147.31
2	508262.06	851300.47
3	507988.21	851515.89
4	507929.11	851420.81

JAKLAND RIDGE IND. PARK

4024	18	NT	IND	2	G023.02
------	----	----	-----	---	---------

OFFICE BUILDING
Brantly Development Corporation
OAKLAND RIDGE INDUSTRIAL PARK
SECTION 2 LOT 92
COLUMBIA, HOWARD CO., MD.
PLAT BOOK NO. 4024

PLANTING PLAN

APPROVED FOR CONSTRUCTION

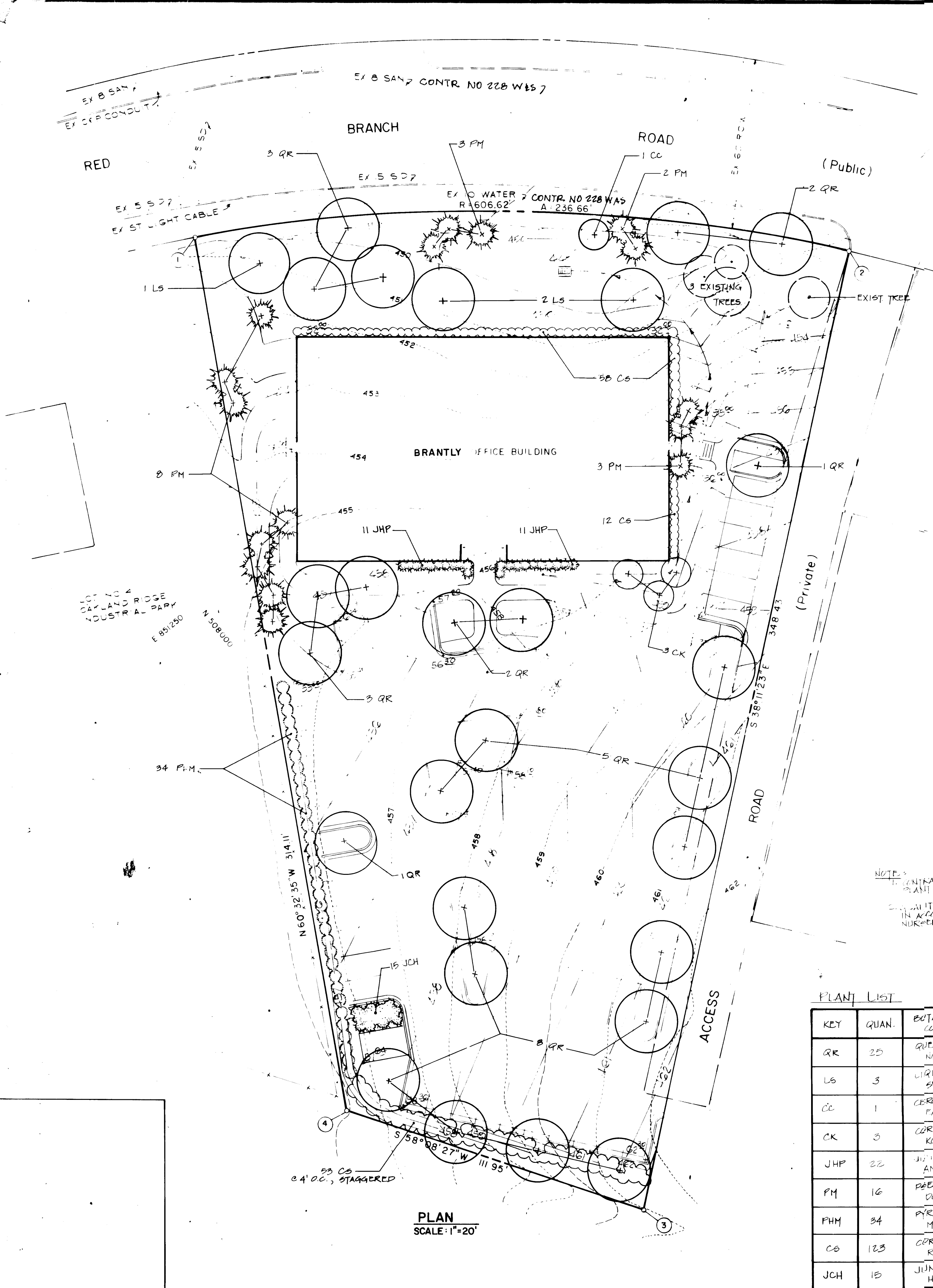
George F. Nemej 11-21-84
William S. Ray 11-23-84
John P. Hoffman 12-3-84
John M. Hoffman 12-4-84
John M. Hoffman 12-4-84

SD-7

AS NOTED

727

SDP-84-273



PLAN
SCALE: 1" = 20'