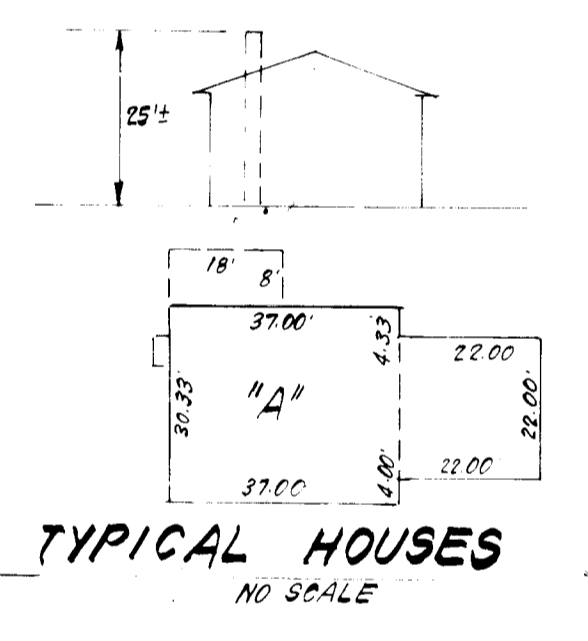


- GENERAL NOTES:**
1. The land included in this plan is zoned: R-12
 2. All coordinates are based on the Maryland State Grid
 3. The area covered is located on Tax Map #30
 4. The total area of this plan is 0.364 Acres
 5. All roadways are public & existing
 6. Any damage to county owned rights of way shall be corrected at the developer's expense
 7. Plat Reference: Plats 4064 & 3073
 8. Number of lots: 1

- LEGEND:**
1. Contour Interval 2 Ft
 2. Existing Contour
 3. Proposed Contour
 4. Spot Elevation
 5. Direction of Drainage
 6. Walk-Out Basement
 7. 100% Flood Main Elevation
 8. Exist Trees to be retained



SURVEYOR'S CERTIFICATE

I hereby certify that the information contained hereon is the same as shown on previously approved S.D.P. 83-133 with the following exceptions:

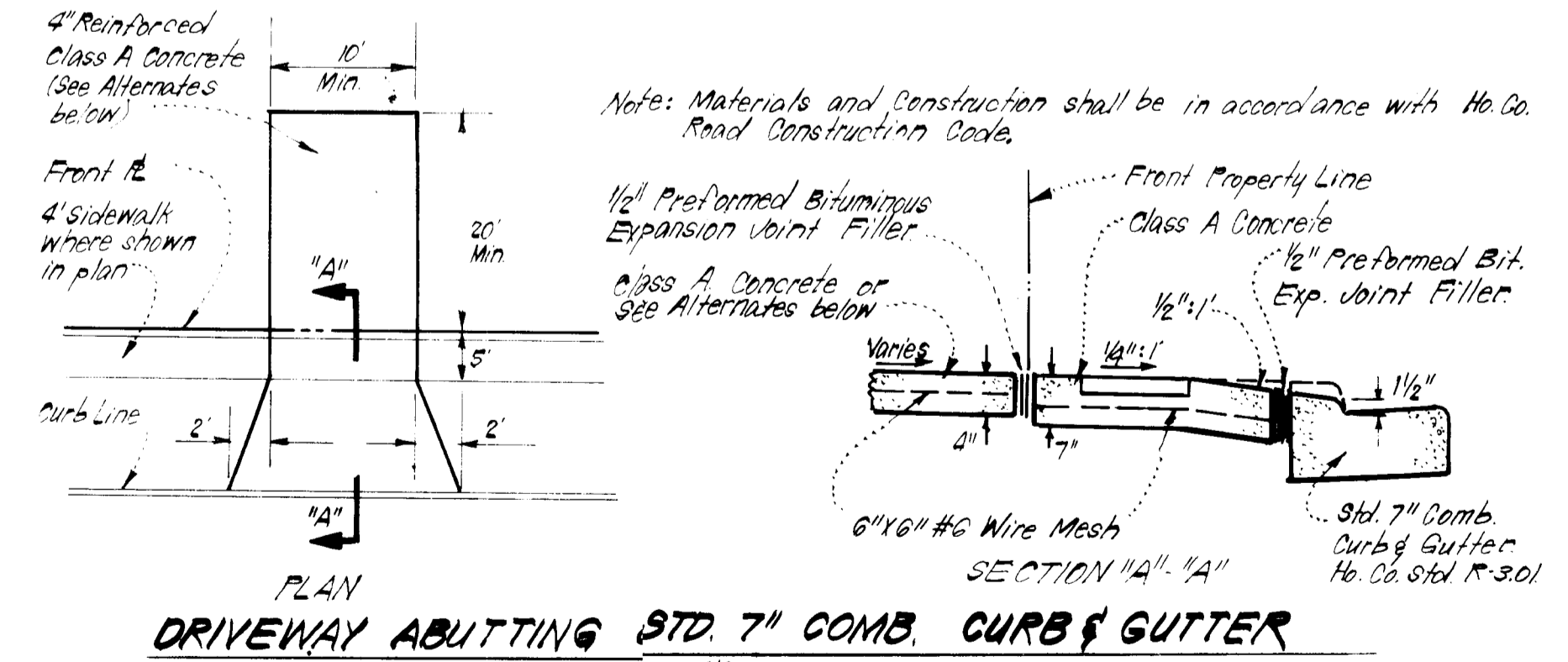
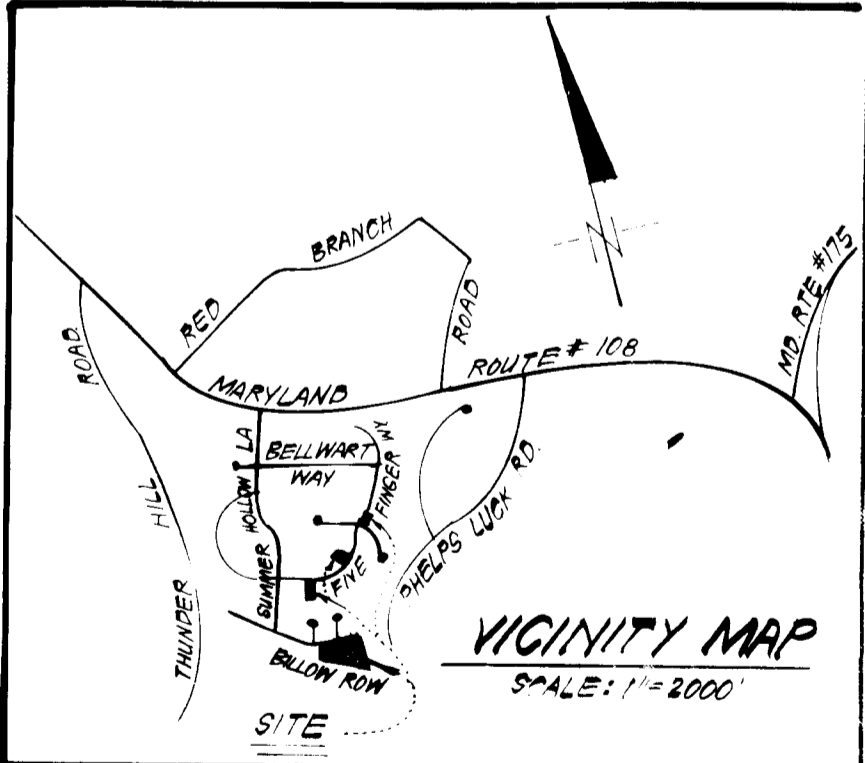
1. House Type and Grading has been revised on Lot 13, Block D

I further certify that the Sediment & Erosion control measures, as previously approved, will not be affected, the grading is substantially the same as originally approved, the building setbacks comply with Howard County Zoning and Subdivision Regulations, and the lot has the same geometric configuration as shown on the respective recorded subdivision Plat.

10-4-83
Date

Donald B. Sackett
DONALD B. SACKETT
Registered Land Surveyor
Md. No. 6059

ADDRESS CHART	
LOT NUMBER	STREET ADDRESS
13 BIK D	3015 BILLOW ROW



- ALTERNATE #1**
1" Bit Conc. Sur-Face
2" Bit Conc. Base
6" Gravel
- ALTERNATE #2**
1" Bit Conc. Sur-Face
4" Bit Conc. Base
- ALTERNATE #3**
1" Bit Conc. Sur-Face
3" Bit Conc. Base
3" Gravel

APPROVED: FOR PUBLIC WATER AND PUBLIC SEWERAGE SYSTEMS, HOWARD COUNTY HEALTH DEPARTMENT

James M. Boyd, M.D. 11/14/83
COUNTY HEALTH OFFICER DATE

APPROVED: HOWARD COUNTY OFFICE OF PLANNING & ZONING

Thomas J. Amis 11-15-83
PLANNING DIRECTOR DATE

William M. Hall 11-15-83
CHIEF DIVISION OF LAND DEVELOPMENT/ZONING ADMIN. DATE

APPROVED: FOR PUBLIC WATER AND PUBLIC SEWERAGE, STORM DRAINAGE SYSTEMS AND PUBLIC ROADS, HOWARD COUNTY DEPARTMENT OF PUBLIC WORKS

W. F. Neumann 11-8-83
DIRECTOR DATE

W. F. Neumann 11-8-83
CHIEF BUREAU OF ENGINEERING DATE

APPROVED
DIVISION OF LAND DEVELOPMENT & ZONING ADMINISTRATION
HOWARD COUNTY, MARYLAND
DATE 10-25-83

SUBDIVISION NAME GLENMONT	SECT./AREA 1/4	LOT 13
PLAT # 4064	BLOCK # 23	ZONE R-12
TAX/ZONE MAP 6 II	BLOC. DIST. 6065.01	CENSUS TR. 6065.01
WATER CODE 607	SEWER CODE 5633900	

CLARK · FINEFROCK & SACKETT ENGINEERS · PLANNERS · SURVEYORS		11315 LOCKWOOD DRIVE SILVER SPRING, MARYLAND 20904 (301) 593-3400
DESIGNED JME	REVISOR JME	SCALE 1"=30'
DRAWN K.L.W.	CHECKED JME	DRAWING 1061
JOB NO. 83107		FILE NO. 83007-X
FOR: RANDALL CONSTRUCTION CO. INC. 3921 Archer Place Kensington, Md 20795		