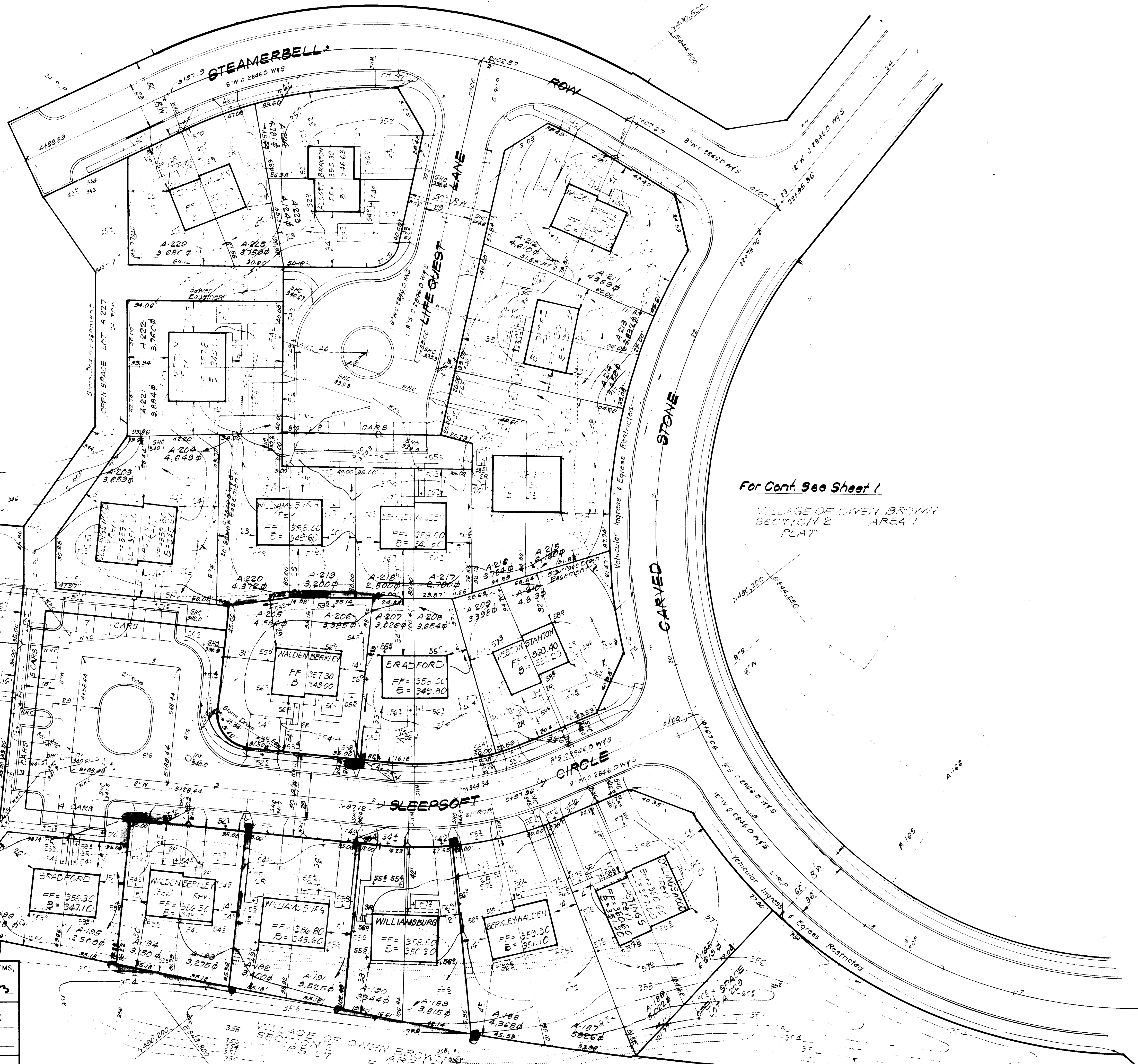


VILLAGE OF OWEN BROWN  
SECTION 2 AREA 1  
OPEN SPACE AREA



For Cont. See Sheet 1

VILLAGE OF OWEN BROWN  
SECTION 2 AREA 1  
PLAN

APPROVED  
DIVISION OF LAND DEVELOPMENT &  
ZONING ADMINISTRATION  
HOWARD COUNTY, MARYLAND  
DATE: 8-12-83

APPROVED FOR PUBLIC WATER AND PUBLIC SEWERAGE SYSTEMS,  
HOWARD COUNTY HEALTH DEPARTMENT  
DATE: 8-11-83

APPROVED HOWARD COUNTY OFFICE OF PLANNING & ZONING  
DATE: 9-15-83

APPROVED FOR PUBLIC WATER AND PUBLIC SEWERAGE,  
STORM DRAINAGE SYSTEMS AND PUBLIC ROADS  
HOWARD COUNTY DEPARTMENT OF PUBLIC WORKS  
DATE: 9-6-83

*Handwritten signature*

Note: For Bearings & Distances for individual lots see Plats 4303 & 4302

<b>CLARK • FINEFROCK &amp; SACKETT</b> ENGINEERS • PLANNERS • SURVEYORS <small>11115 LEE ROAD DRIVE • LIVER SPRING, MARYLAND 20844 • (301) 541-1411</small>		SCALE 1" = 30' DRAWING 20-2 JOB NO. 78-177 FILE NO. 78-177-X
DESIGNED DRAWN Y.P.W. CHECKED DATE July, 1983	<b>REVISED SITE DEVELOPMENT PLAN</b> LOTS A-165, A-166, A-171, A-172, A-175, A-176, A-189, A-190, A-193, A-194, A-205 AND A-208 <b>COLUMBIA</b> VILLAGE OF OWEN BROWN SECTION 2 AREA 1 6th ELECTION DISTRICT HOWARD COUNTY, MARYLAND FOR: THE RYLAND GROUP (Col. Div.) One Knoll North Drive, Suite 503 Columbia, Maryland 21045	DATE July, 1983