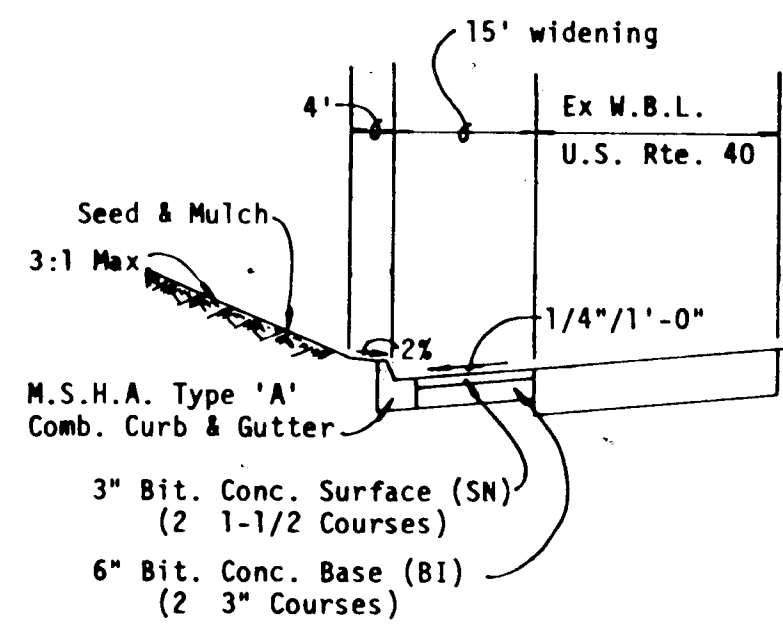


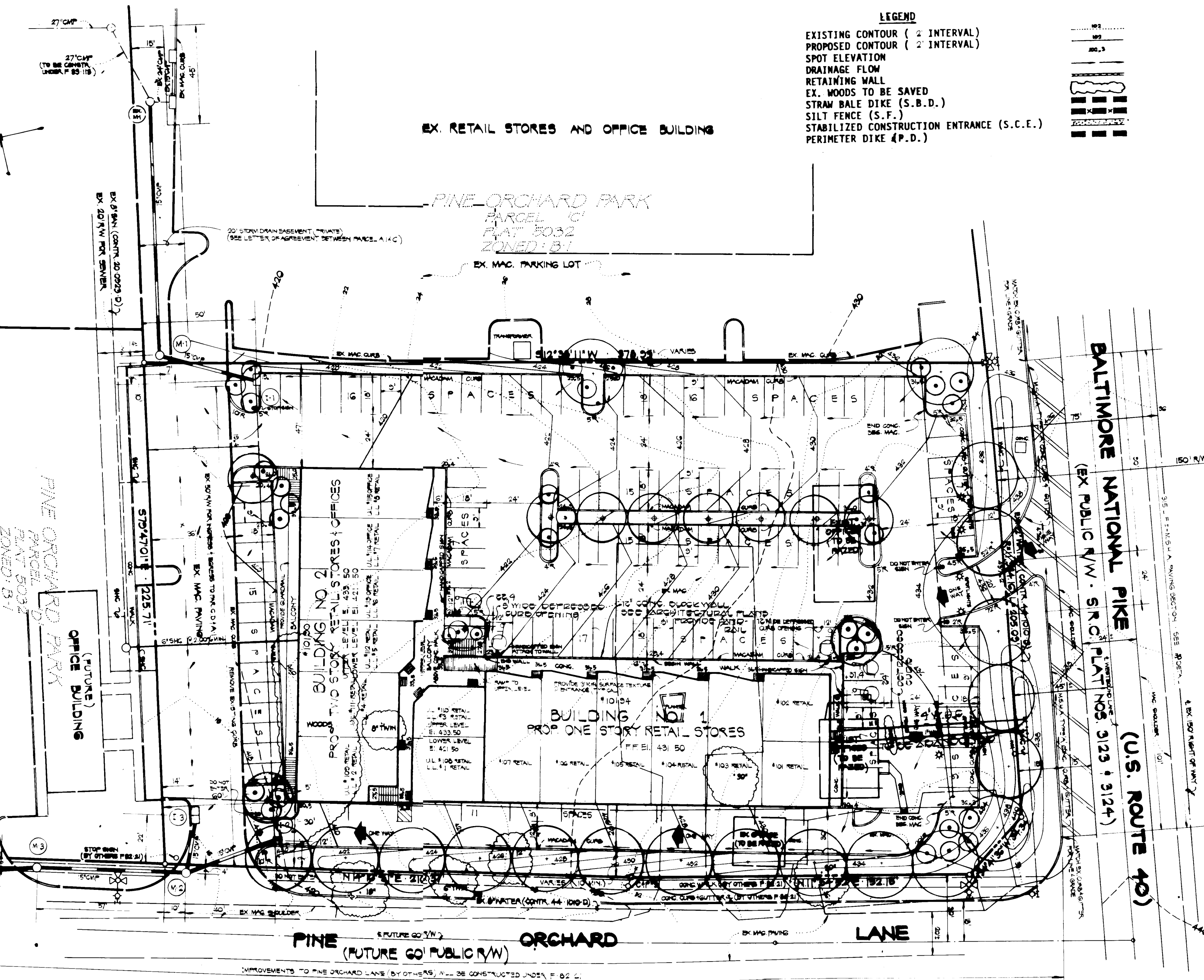
GENERAL NOTES

- TOTAL AREA OF PARCEL 'A': 2.012 AC. ±
- PRESENT ZONING OF PROPERTY: B-1
- PROPERTY IS RECORDED AS PLAT NO. 5555
- PROPERTY IS SHOWN ON TAX MAP 24, P/O PARCEL
- PARKING DATA:
  - INTENDED USE OF STRUCTURE: RETAIL STORES AND OFFICES
  - TOTAL AREA OF BUILDINGS: 27,397 S.F. FLOOR AREA
    - BUILDING NO. 1: 12,133 S.F.
      - RETAIL USE: 12,133 S.F.
      - OFFICE USE: NONE
    - BUILDING NO. 2: 15,264 S.F.
      - RETAIL USE: 11,361 S.F.
      - OFFICE USE: 3,903 S.F.
  - BUILDING COVERAGE (INCLUDING ROOFED AREAS) TOTAL AREA = 23,940 S.F. or 0.550 AC. ± (27%)
    - BUILDING NO. 1: 13,769 S.F. (15.7%)
    - BUILDING NO. 2: 10,171 S.F. (11.6%)
  - TOTAL NUMBER OF SPACES REQUIRED: 132 SPACES
    - RETAIL STORES (1 SPACE/200 S.F.) 23,494 S.F. ÷ 200 = 118 SP.
    - OFFICES (7 SPACES/10 EMPLOYEES) 20 MAX. EMP. ÷ 10 x 7 = 14 SPACES
  - HANDICAPPED SPACES: 5 SPACES
  - TOTAL NUMBER OF SPACES PROVIDED: 135 SPACES
    - REGULAR SPACES (9' x 18') = 130 SPACES
    - HANDICAPPED SPACES (12' x 18') = 5 SPACES
  - OPEN SPACE DATA:
    - OPEN SPACE REQUIRED (20%) = 0.40 AC. ±
    - OPEN SPACE PROVIDED = 0.40 AC. ±
  - LANDSCAPING DATA:
    - TOTAL AREA OF PARKING LOT: 1.18 AC. ±
    - LANDSCAPED ISLAND REQUIRED (5%): 0.06 AC. ±
    - LANDSCAPED ISLANDS PROVIDED: 0.12 AC. ±
- THE CONTRACTOR SHALL NOTIFY THE HOWARD COUNTY CONSTRUCTION INSPECTION/SURVEY DIVISION 24 HOURS PRIOR TO COMMENCEMENT OF WORK AT 792-7272.
- HANDICAPPED FACILITIES TO BE CONSTRUCTED IN ACCORDANCE WITH THE "DESIGN OF BARRIER FREE FACILITIES" AND THE "MARYLAND BUILDING CODE FOR THE HANDICAPPED AND AGED"
- ALL PAVING AND STORM DRAIN CONSTRUCTION SHALL BE IN ACCORDANCE WITH THE HOWARD COUNTY ROAD CONSTRUCTION CODE AND STANDARD SPECIFICATIONS.
- EXISTING UTILITIES SHOWN HEREON HAVE BEEN LOCATED FROM FIELD AND OFFICE INFORMATION. THE CONTRACTOR SHALL DETERMINE THE EXACT LOCATION OF EXISTING UTILITIES TO HIS OWN SATISFACTION BEFORE MAKING ANY CONNECTION THERETO OR EXCAVATING IN THE AREA THEREOF.
- THE CONTRACTOR SHALL NOTIFY MISS UTILITY AT 559-0100 A MINIMUM OF THREE DAYS PRIOR TO BEGINNING ANY CONSTRUCTION SHOWN HEREON.
- SEE ARCHITECTURAL DRAWINGS FOR BUILDING DIMENSIONS.
- STORM WATER MANAGEMENT IS PROVIDED UNDER F-82-129

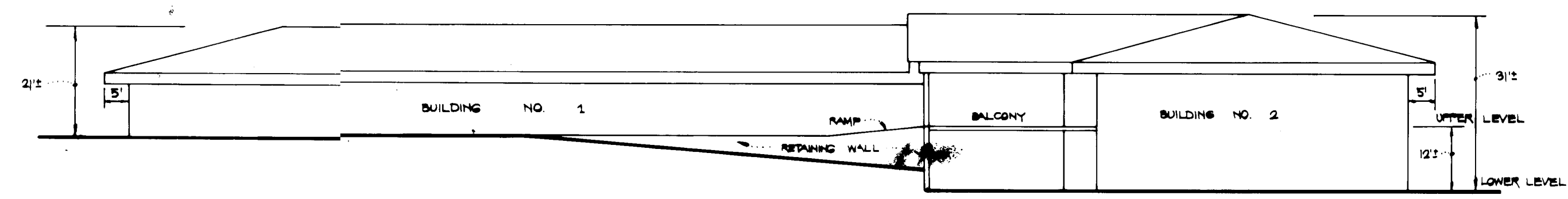


TYPICAL SECTION-WIDENING U.S. ROUTE 40 NOT TO SCALE

LANDSCAPE SCHEDULE						
SYMBOL	NO.	SPECIES	COMMON NAME	SIZE	SPACING	REMARKS
⊙	21	ACER RUBRUM	RED MAPLE	2-1/2" CAL.	30' O/C	B&B
⊙	10	CORNUS FLORIDA	EASTERN FLOWERING DOGWOOD	2-1/2" CAL.	24' O/C	B&B
⊙	35	AZALEA	HENO CRIMSON AZALEA	15"-18"	4'-5'	CONT.

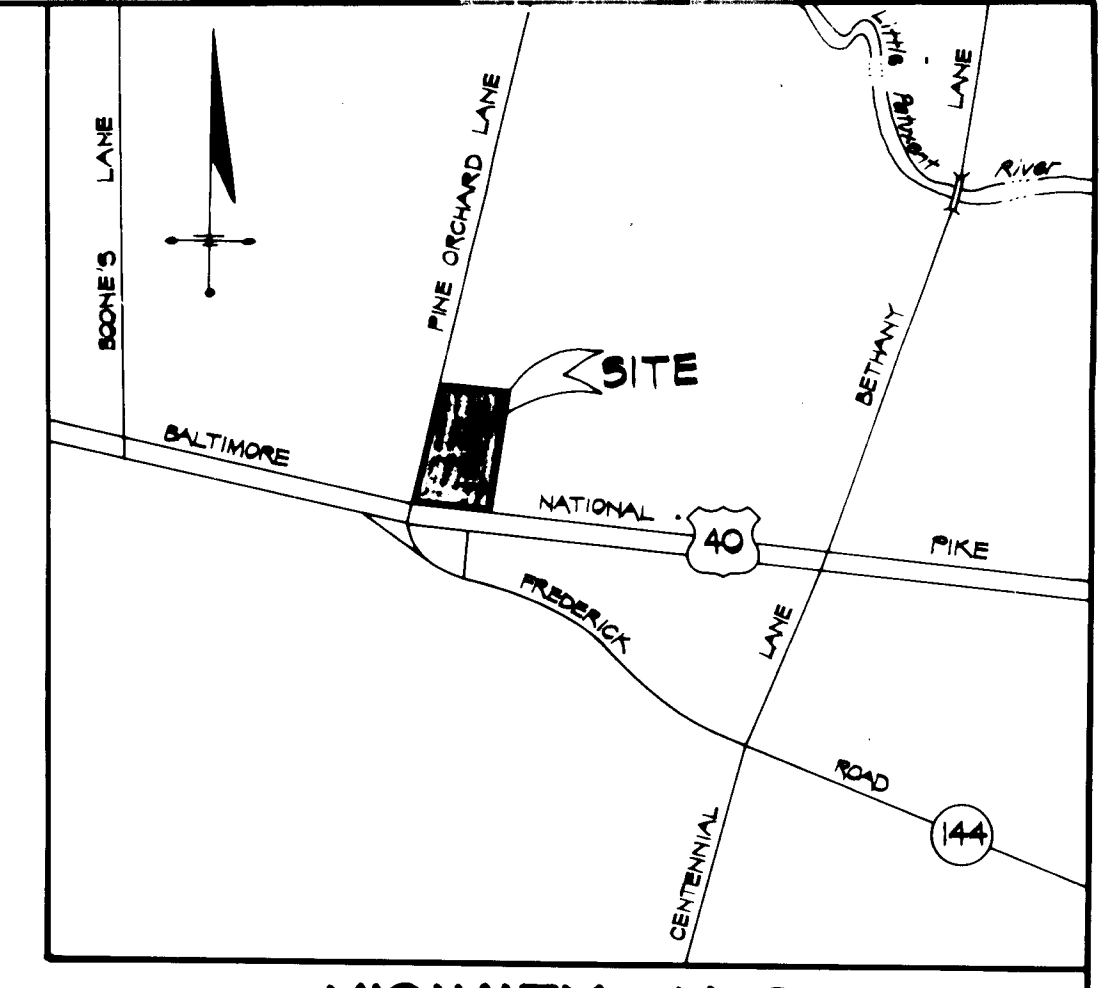


PLAN SCALE: 1"=30'



EAST ELEVATION BUILDING PROFILE NOT TO SCALE

OWNER/DEVELOPER  
VENUS CONSTRUCTION CO.  
1718 M BELMONT AVENUE  
BALTIMORE, MD. 21207  
(301) 265-1440



VICINITY MAP SCALE: 1"=600'

ADDRESS CHART		
OFFICE NO.	STREET	ADDRESS
#1	10134	BALTIMORE NATIONAL PIKE
#2	10130	"
#3	10134	"
#4	10130	"
#5	10130	"
#6	10130	"
#7	10130	"
#8	10130	"
#9	10134	"
#10	10134	"
#11	10134	"
#12	10134	"
#13	10134	"
#14	10130	"
#15	10130	"

10-3-83  
M/1/10/83

SUBDIVISION NAME PINE ORCHARD PARK	SECT./AREA -	LOT/PARCEL # "A-1"
PLAT OR L/R 5555	BLOCK # 1	ZONE B-1
TAX/ZONE MAP 24	ELEC. DIST. 2 <sup>ND</sup>	CENSUS TR. 6022
WATER CODE H 06	SEWER CODE 5960000	

PREPARED BY:  
**FISHER, COLLINS & CARTER, INC.**  
CIVIL ENGINEERS & LAND SURVEYORS  
8388 COURT AVENUE  
ELLICOTT CITY, MARYLAND 21043  
(301) 461-2855

ENGINEER'S CERTIFICATE  
I HEREBY CERTIFY THAT THIS PLAN FOR EROSION AND SEDIMENT CONTROL REPRESENTS A PRACTICAL AND WORKABLE PLAN BASED ON MY PERSONAL KNOWLEDGE OF THE SITE CONDITIONS AND THAT IT WAS PREPARED IN ACCORDANCE WITH THE REQUIREMENTS OF THE HOWARD COUNTY SOIL CONSERVATION DISTRICT.  
*Chas. J. Carter*  
SIGNATURE OF ENGINEER  
10/13/83  
DATE

DEVELOPER'S CERTIFICATE  
"I/WE CERTIFY THAT ALL DEVELOPMENT AND CONSTRUCTION WILL BE DONE ACCORDING TO THIS PLAN OF DEVELOPMENT AND PLAN FOR EROSION AND SEDIMENT CONTROL AND THAT ALL RESPONSIBLE PERSONNEL INVOLVED IN THE CONSTRUCTION PROJECT WILL HAVE A CERTIFICATE OF ATTENDANCE AT A DEPARTMENT OF NATURAL RESOURCES APPROVED TRAINING PROGRAM FOR THE CONTROL OF SEDIMENT AND EROSION BEFORE BEGINNING THE PROJECT. I ALSO AUTHORIZE PERIODIC ON-SITE INSPECTION BY THE HOWARD SOIL CONSERVATION DISTRICT OR THEIR AUTHORIZED AGENTS, AS ARE DEEMED NECESSARY."  
*David D. Dunsley*  
SIGNATURE OF DEVELOPER  
10/13/83  
DATE

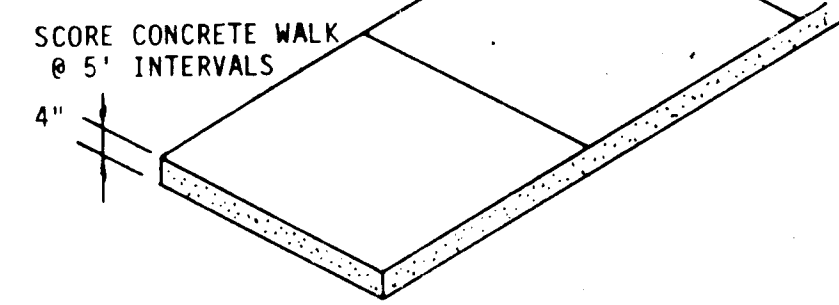
REVIEWED FOR HOWARD COUNTY SOIL CONSERVATION DISTRICT AND MEETS TECHNICAL REQUIREMENTS.  
*James M. Helch*  
SOIL CONSERVATION SERVICE  
10-19-83  
DATE  
"THIS DEVELOPMENT IS APPROVED FOR EROSION AND SEDIMENT CONTROL BY THE HOWARD SOIL CONSERVATION DISTRICT."  
*James M. Helch*  
DISTRICT COORDINATOR  
HOWARD SOIL CONSERVATION DISTRICT  
11-24-83  
DATE

APPROVED: OFFICE OF PLANNING AND ZONING  
*Donald L. Harris*  
PLANNING DIRECTOR  
1-4-84  
DATE  
"I, DIVISION OF LAND DEVELOPMENT AND ZONING ADMINISTRATION"  
*James M. Helch*  
APPROVED: HOWARD COUNTY HEALTH DEPARTMENT.  
FOR PUBLIC WATER AND SEWERAGE SYSTEMS.  
*James M. Helch*  
HEALTH OFFICER  
1-3-84  
DATE

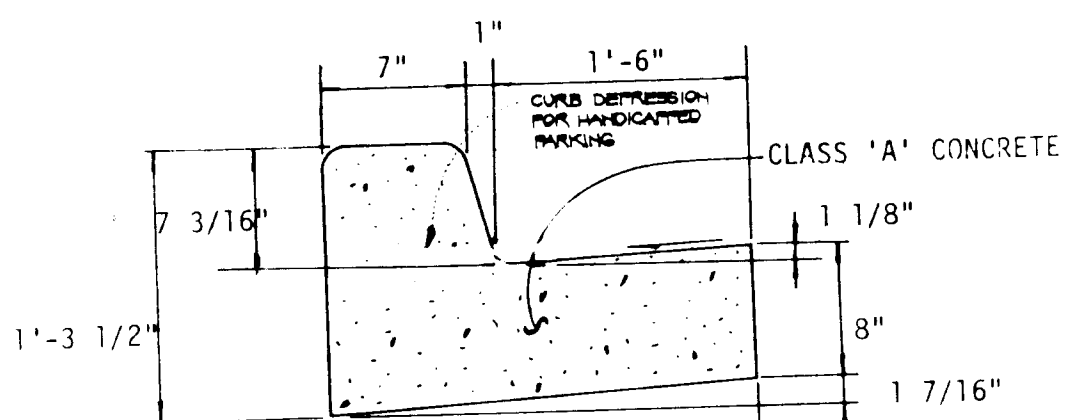
APPROVED: DEPARTMENT OF PUBLIC WORKS.  
FOR PUBLIC WATER AND SEWER AND STORM DRAINAGE SYSTEMS AND ROADS.  
*Joseph F. Neuman*  
DIRECTOR PUBLIC WORKS  
12-30-83  
DATE  
CHIEF, BUREAU OF ENGINEERING

SITE DEVELOPMENT PLAN  
**PINE ORCHARD PARK**  
PARCEL 'A-1'  
2<sup>ND</sup> ELECTION DISTRICT HOWARD COUNTY, MARYLAND  
SCALE: 1"=30' SHEET 1 OF 3 JUNE 20, 1983  
REVISED: SEPTEMBER 6, 1983

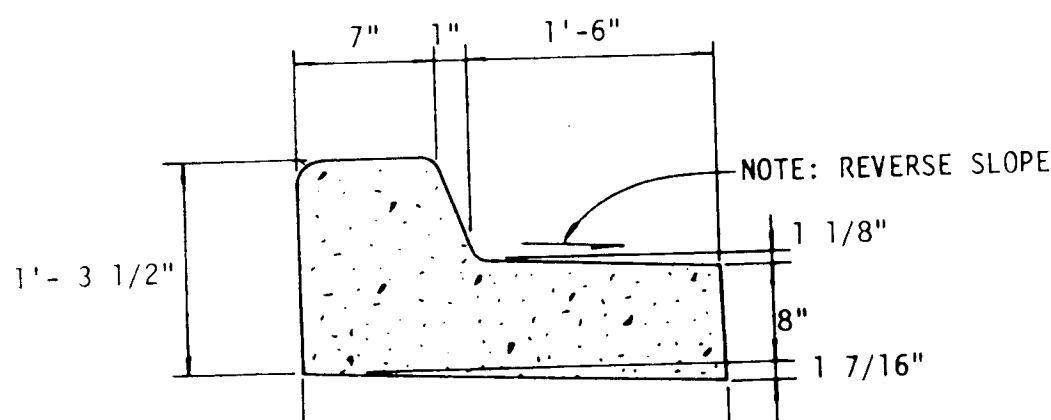
NOTE: PROVIDE EXPANSION JOINT WHEREVER SIDEWALK ABUTS CURBS, BUILDINGS, STAIRS AND INTERSECTIONS OF WALKS.



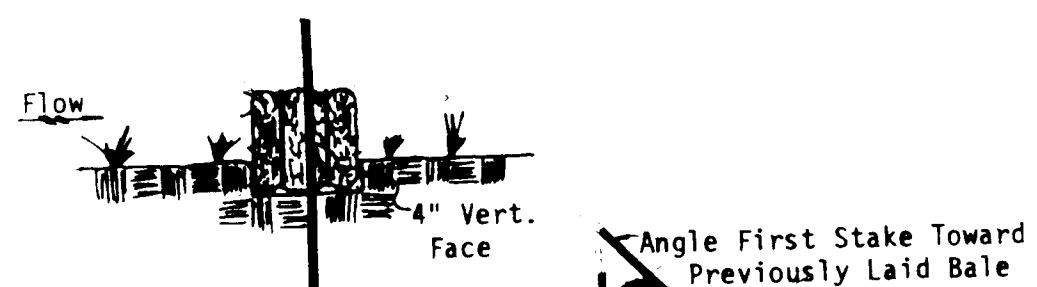
TYPICAL SIDEWALK DETAIL  
NOT TO SCALE



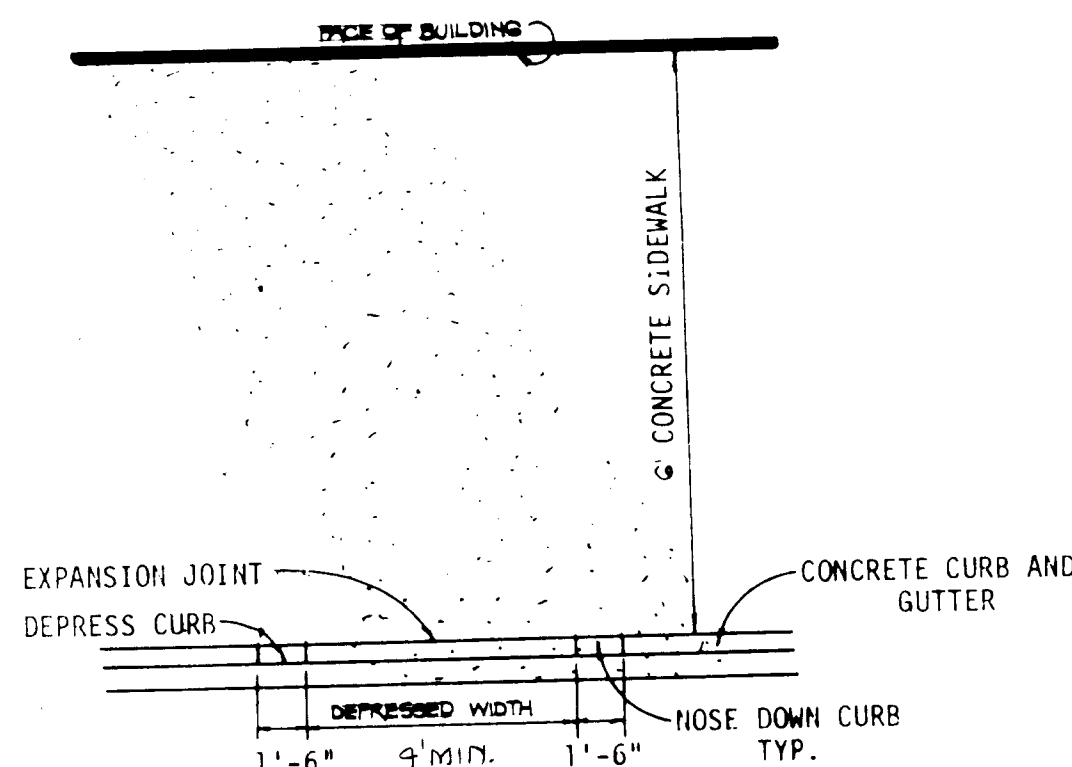
STANDARD 7" COMBINATION CURB & GUTTER  
NO SCALE



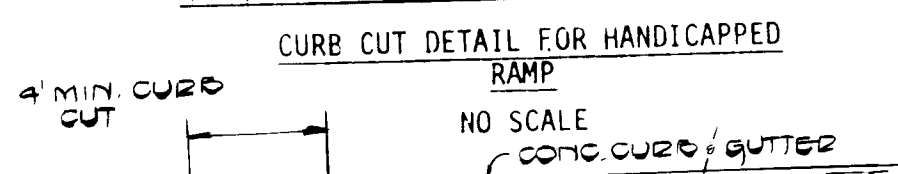
STANDARD 7" COMBINATION CURB & GUTTER  
NO SCALE



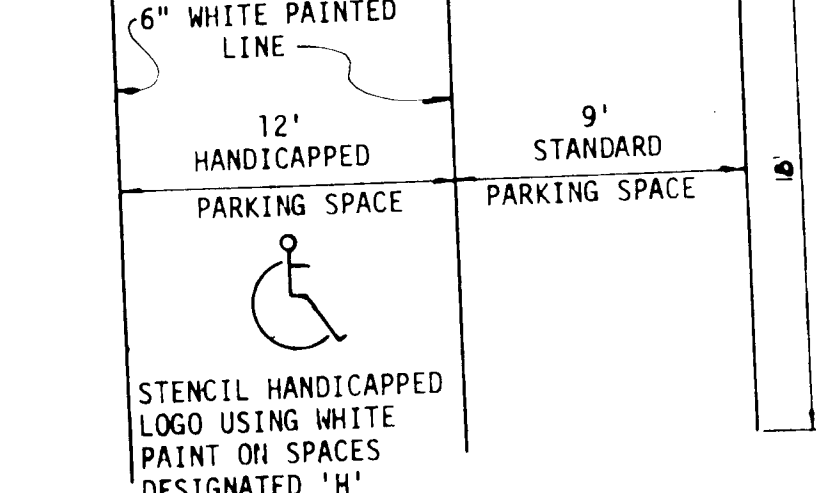
STRAW BALE DIKE  
NOT TO SCALE



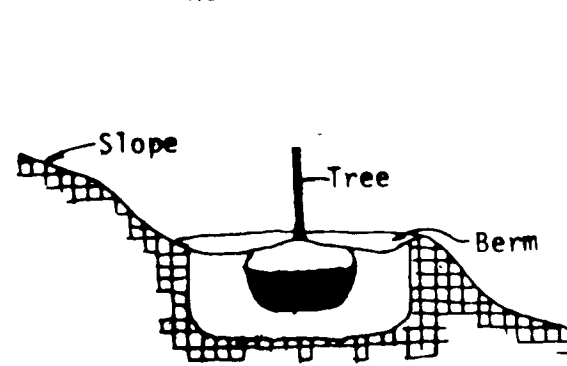
EXPANSION JOINT  
DEPRESS CURB



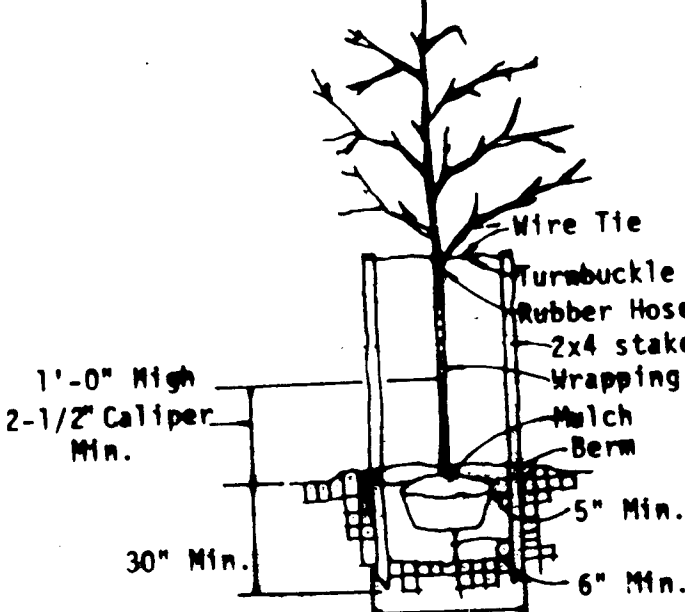
CURB CUT DETAIL FOR HANDICAPPED RAMP  
NO SCALE



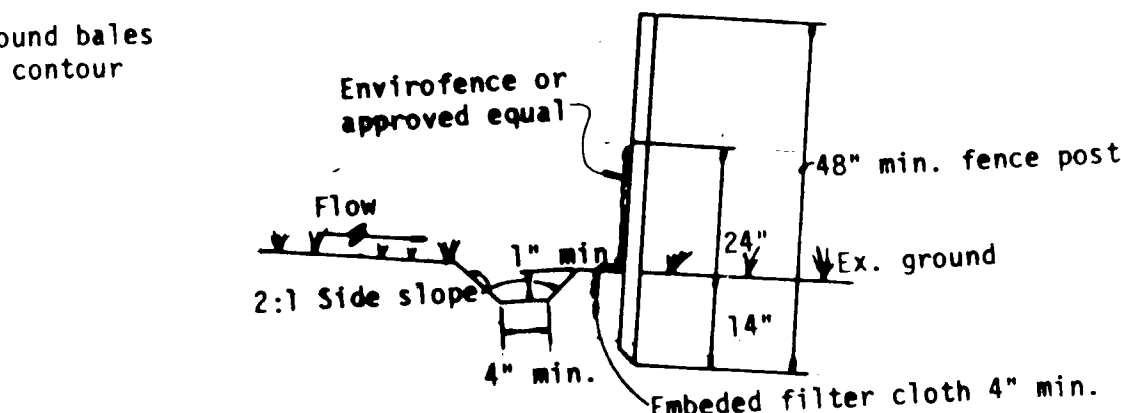
TYPICAL PARKING DETAIL  
NO SCALE



GRADING FOR PLANTING ON SLOPES



TREE PLANTING



SILT FENCE DETAIL  
NOT TO SCALE

OWNER/DEVELOPER

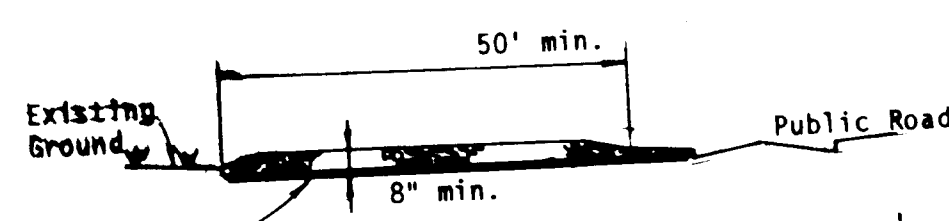
VENUS CONSTRUCTION CO.  
1718 M BELMONT AVENUE  
BALTIMORE, MD. 21207  
(301) 265-1440

TYPICAL PAVING SECTION  
NOT TO SCALE

- 1" Bit. Conc. Surface
- 4" Bit. Conc. Base
- Compacted Subgrade
- Full Depth Bit. Conc. Alternate (P.1)
- 1" Bit. Conc. Surface
- 2" Bit. Conc. Base
- Prime
- 5" Crusher Run Base Course Or
- 4" Dense Graded Stabilized Aggregate Base Course
- Compacted Subgrade
- Granular Base Alternates (P.1)

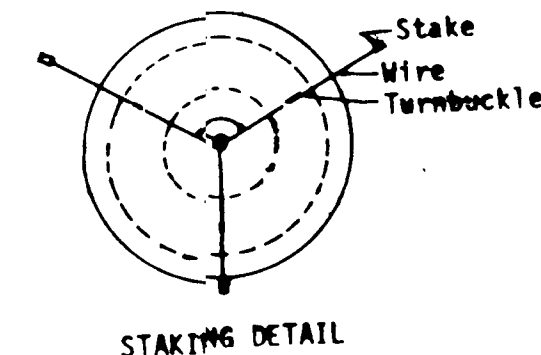


HANDICAPPED SIGN DETAIL  
NOT TO SCALE

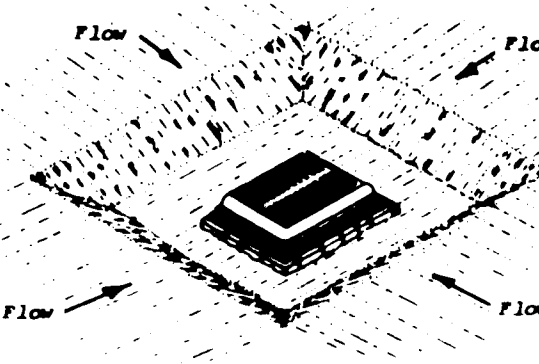


STABILIZED CONSTRUCTION ENTRANCE  
NOT TO SCALE

Provide appropriate transition between stabilized construction entrance and public right-of-way

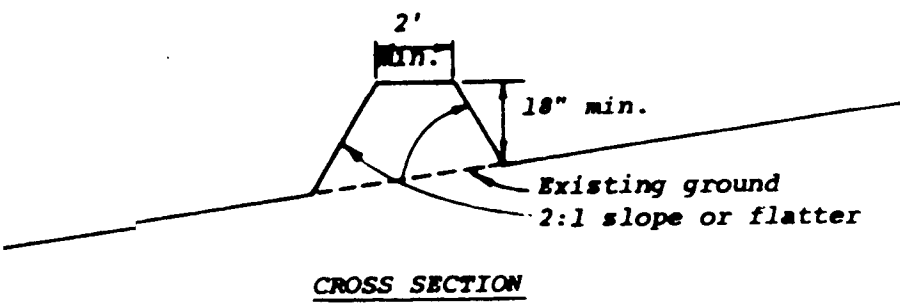


STAKING DETAIL

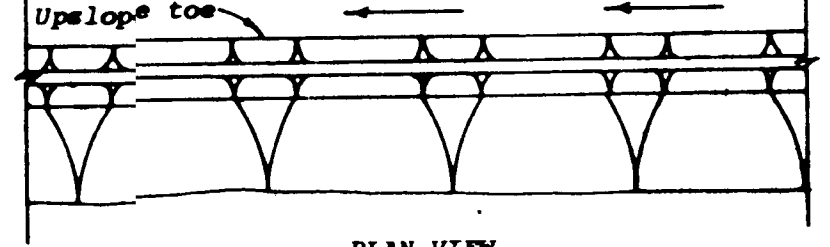


CROSS-SECTION  
YARD DRAIN

SEDIMENT TRAP NO. 2  
NOT TO SCALE

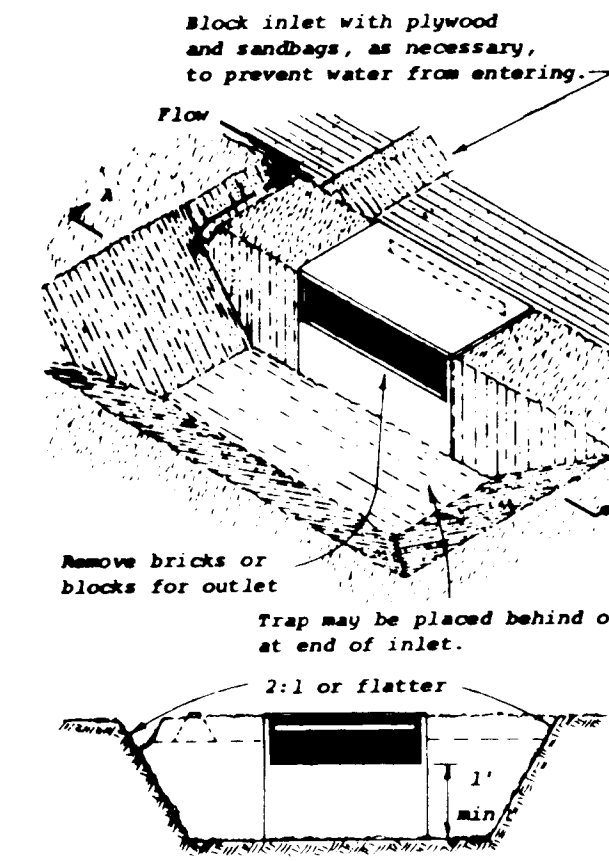


CROSS SECTION



PLAN VIEW

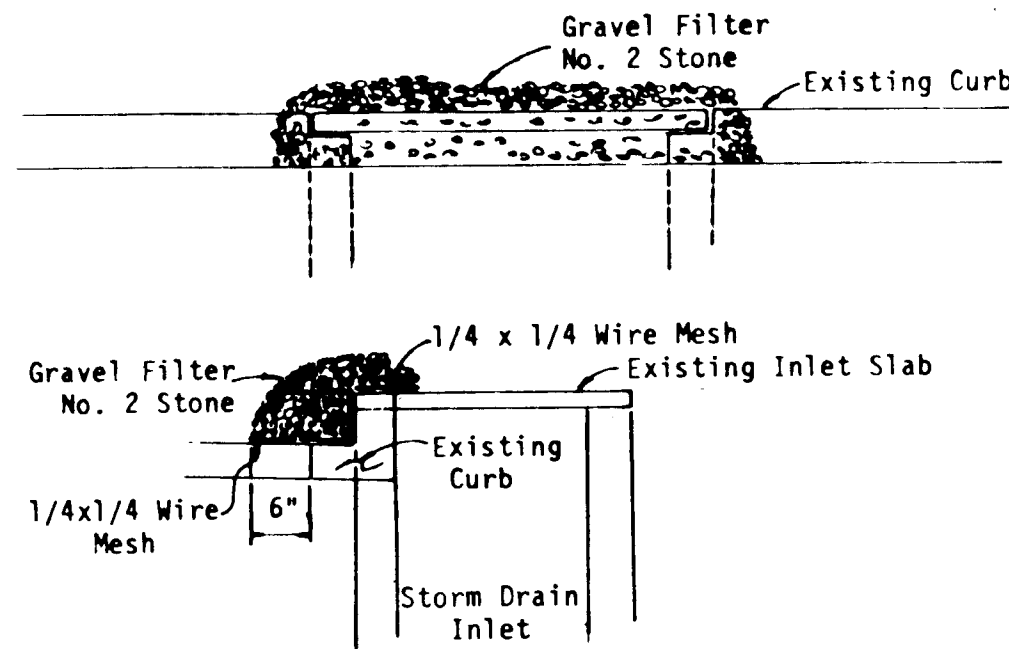
PERIMETER DIKE  
NOT TO SCALE



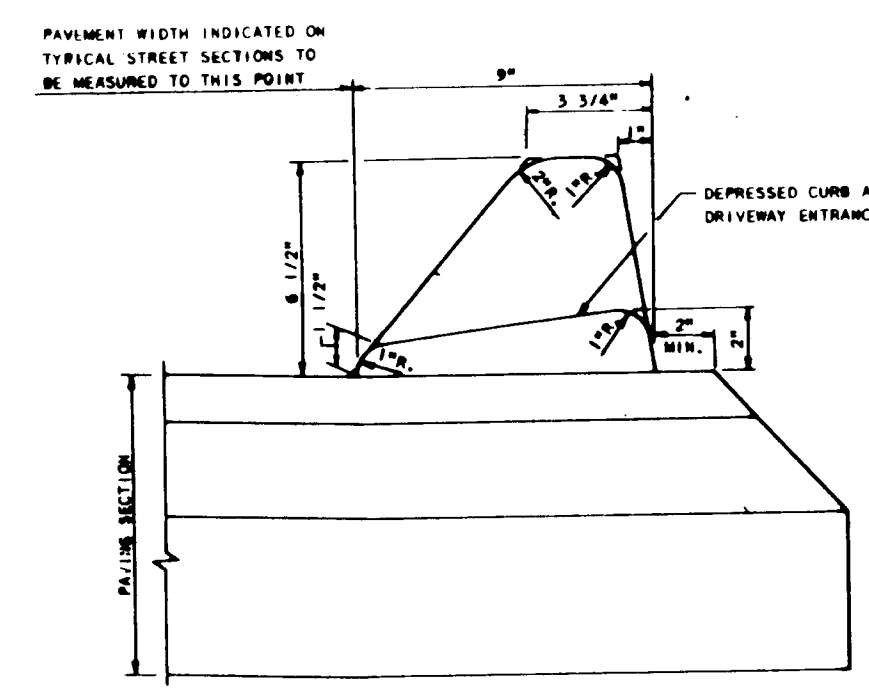
SECTION A-A  
CURB DRAIN

NOTE: Where curb is in place, provide a 1 ft. wide opening in the curb or use a sandbag dam to force water over the curb to the trap.

SEDIMENT TRAP NO. 1  
NOT TO SCALE



STONE FILTER INLET PROTECTION  
DETAIL  
NOT TO SCALE

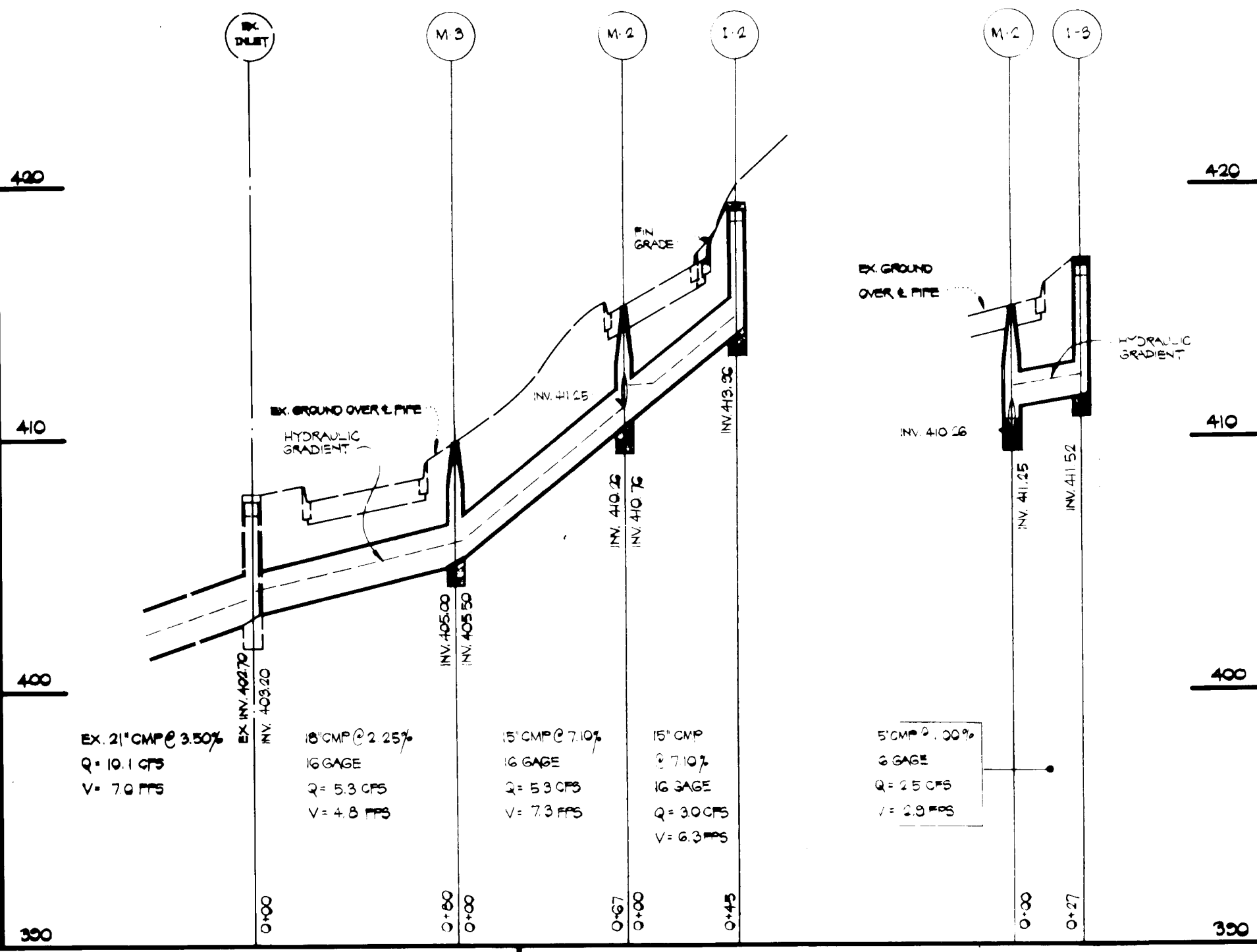


STANDARD BITUMINOUS CURB  
NOT TO SCALE

STRUCTURE SCHEDULE				
NO.	INV. IN	INV. OUT	TOP ELEV.	REMARKS
I-1	--	416.67	416.67	SD-4.01
I-2	--	413.96	413.96	SD-4.32
I-3	--	411.52	411.52	SD-4.34
M-1	414.35	413.85	419.00	G-5.05
M-2	411.25	410.26	415.20	G-5.05
M-3	405.50	405.00	409.90	G-5.05

STORM DRAIN PROFILES

SCALE: HORIZONTAL 1"=50'  
VERTICAL 1"=5'



PREPARED BY:  
**FISHER, COLLINS & CARTER, INC.**  
CIVIL ENGINEERS & LAND SURVEYORS  
8388 COURT AVENUE  
ELLCOTT CITY, MARYLAND 21043  
(301) 461-2855

ENGINEER'S CERTIFICATE  
I HEREBY CERTIFY THAT THIS PLAN FOR EROSION AND SEDIMENT CONTROL REPRESENTS A PRACTICAL AND WORKABLE PLAN BASED ON MY PERSONAL KNOWLEDGE OF THE SITE CONDITIONS AND THAT IT WAS PREPARED IN ACCORDANCE WITH THE REQUIREMENTS OF THE HOWARD COUNTY SOIL CONSERVATION DISTRICT.  
*Charles Conrad*  
10/12/83

DEVELOPER'S CERTIFICATE  
"I/WE CERTIFY THAT ALL DEVELOPMENT AND CONSTRUCTION WILL BE DONE ACCORDING TO THIS PLAN OF DEVELOPMENT AND PLAN FOR EROSION AND SEDIMENT CONTROL AND THAT ALL RESPONSIBLE PERSONNEL INVOLVED IN THE CONSTRUCTION PROJECT WILL HAVE A CERTIFICATE OF ATTENDANCE AT A DEPARTMENT OF NATURAL RESOURCES APPROVED TRAINING PROGRAM FOR THE CONTROL OF SEDIMENT AND EROSION BEFORE BEGINNING THE PROJECT. I ALSO AUTHORIZE PERIODIC ON-SITE INSPECTION BY THE HOWARD COUNTY SOIL CONSERVATION DISTRICT OR THEIR AUTHORIZED AGENTS, AS ARE DEEMED NECESSARY."  
*Charles Conrad*  
10/12/83

REVIEWED FOR HOWARD COUNTY SOIL CONSERVATION DISTRICT AND MEETS TECHNICAL REQUIREMENTS.  
*James M. White*  
10-19-83  
S.O. SOIL CONSERVATION SERVICE  
DATE

APPROVED: OFFICE OF PLANNING AND ZONING  
*James M. White*  
1-4-84  
PLANNING DIRECTOR  
DATE

APPROVED: DEPARTMENT OF PUBLIC WORKS FOR PUBLIC WATER AND SEWER AND STORM DRAINAGE SYSTEMS AND ROADS.  
*Joseph E. Nimmy*  
12-30-83  
DIRECTOR, PUBLIC WORKS  
DATE

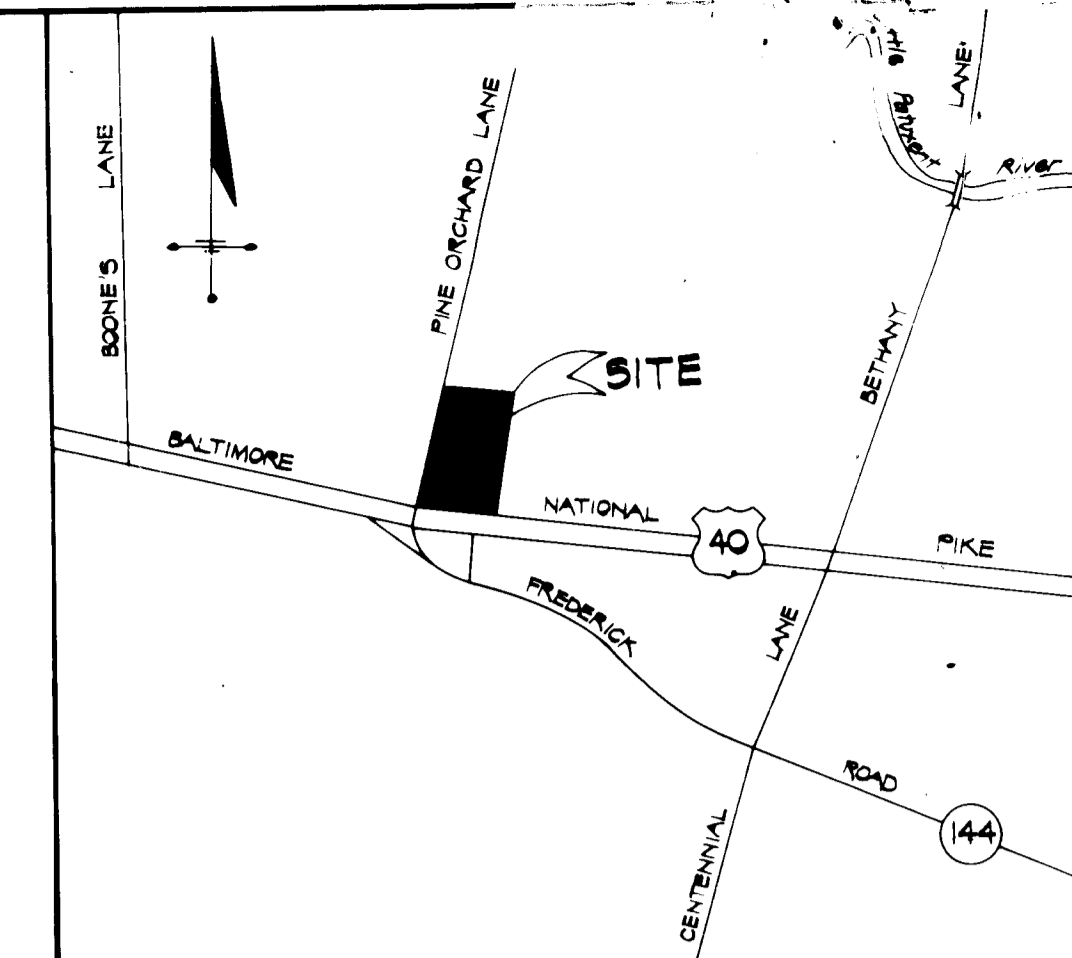
STORM DRAIN PROFILES & DETAILS  
**PINE ORCHARD PARK**  
PARCEL 'A-1'  
2<sup>ND</sup> ELECTION DISTRICT HOWARD COUNTY, MARYLAND  
SCALE: 1"=30' SHEET 2 OF 3 JUNE 20, 1983  
REVISED: SEPTEMBER 6, 1983



CONSTRUCTION SEQUENCE

- OBTAIN GRADING PERMIT.
- CONSTRUCT STABILIZED CONSTRUCTION ENTRANCE AS SHOWN ON PLAN.
- EXCAVATE SEDIMENT TRAPS TO REQUIRED DIMENSIONS AS SHOWN ON PLAN. CONSTRUCT PERIMETER DIKE, STABILIZE TRAPS AND DIKE WITH SEED & MULCH. INSTALL STRAW BALE DIKE/SILT FENCE.
- CLEAR AND GRUB SITE AND GRADE TO SUBGRADE.
- CONSTRUCT STORM DRAINS. CONVERT EXISTING STONE OUTLET SEDIMENT TRAPS TO STORM DRAIN INLET TRAPS DURING PERIOD OF STORM DRAIN CONSTRUCTION.
- SEDIMENT SHALL BE REMOVED FROM THE SEDIMENT TRAPS WHEN THE CLEANOUT ELEVATION HAS BEEN REACHED.
- THE CONTRACTOR SHALL INSPECT AND PROVIDE NECESSARY MAINTENANCE ON THE SEDIMENT AND EROSION CONTROL STRUCTURES SHOWN HEREON, AFTER EACH RAINFALL AND ON A DAILY BASIS.
- THE SEDIMENT TRAPS SHALL BE DEWATERED BY PUMPING IF NECESSARY.
- THE SEDIMENT FROM THE TRAPS SHALL BE PLACED UP-GRADE FROM THE SEDIMENT TRAPS IN SUCH A MANNER AS NOT TO INTERFERE WITH CONSTRUCTION OPERATIONS OR CAUSE EROSION DOWNGRADE FROM THE SEDIMENT TRAPS.
- REMOVE SEDIMENT FROM ROADWAYS AND DRESS STONE CONSTRUCTION ENTRANCE AS REQUIRED.
- BACKFILL SEDIMENT TRAPS WITH EARTH USED FOR PERIMETER DIKES AND STABILIZE DISTURBED AREAS WITH SEEDING MIXTURE.
- CONSTRUCT CONCRETE CURB & GUTTER AND INSTALL BASE COURSE. PROVIDE INLET PROTECTION @ INLET I-1 AND I-2.
- REMOVE STONE CONSTRUCTION ENTRANCE.
- CLEAN BASE COURSE, APPLY TACK COAT TO BASE COURSE AND LAY SURFACE COURSE.
- ALL DISTURBED AREAS DUE TO REMOVAL OF SEDIMENT CONTROL MEASURES SHALL BE GRADED AND STABILIZED WITH PERMANENT SEEDING MIXTURE.

- LEGEND
- EXISTING CONTOUR (2 INTERVAL)
  - PROPOSED CONTOUR (2 INTERVAL)
  - SPOT ELEVATION
  - DRAINAGE FLOW
  - RETAINING WALL
  - EX. WOODS TO BE SAVED
  - STRAW BALE DIKE (S.B.D.)
  - SILT FENCE (S.F.)
  - STABILIZED CONSTRUCTION ENTRANCE (S.C.E.)
  - PERIMETER DIKE (P.D.)



VICINITY MAP

SCALE 1" = 600'

SEDIMENT CONTROL NOTES

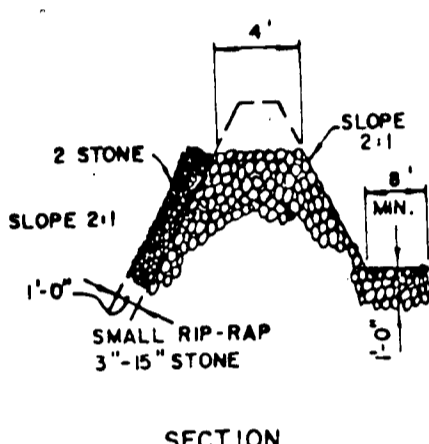
- SPECIFICATIONS FOR THE SEDIMENT CONTROL DETAILS INCLUDED IN THE U.S.D.A. SOIL CONSERVATION SERVICE STANDARDS AND SPECIFICATIONS FOR SOIL EROSION AND SEDIMENT CONTROL IN DEVELOPING AREAS.
- THE DEVELOPER SHALL NOTIFY THE HOWARD COUNTY OFFICE OF INSPECTION AND PERMITS AT LEAST 24 HOURS PRIOR TO BEGINNING ANY CONSTRUCTION SHOWN HEREON (792-7272).
- SEDIMENT CONTROL STRUCTURES TO BE CONSTRUCTED PRIOR TO ANY ON-SITE GRADING OR DISTURBANCE TO ANY EXISTING SURFACE MATERIAL, AND ARE TO BE STABILIZED AS SOON AS CONSTRUCTED.
- ALL SEDIMENT CONTROL STRUCTURES TO REMAIN IN PLACE UNTIL PERMISSION FOR THEIR REMOVAL HAS BEEN OBTAINED FROM THE HOWARD COUNTY OFFICE OF INSPECTION AND PERMITS (792-7272).
- ALL GRADED AREAS NOT TO BE SOILED SHALL BE STABILIZED BY SEEDING AND MULCHING IN ACCORDANCE WITH THE FOLLOWING:
  - SITE PREPARATION
    - HARROW OR DISC IN AREAS PROPOSED TO BE SEED THE FOLLOWING MATERIALS
      - PULVERIZED LIMESTONE AT 2 TONS/ACRE.
      - COMMERCIAL FERTILIZER 10-10-10 AT 3/4 TONS/ACRE.
      - SUPER PHOSPHATE AT 600 LBS./ACRE.
    - SEEDING
      - SOW THE FOLLOWING SEED MIXTURE AT THE RATE OF 200 LBS./ACRE WITH A MECHANICAL SPREADER.
        - TEMPORARY: ITALIAN OR PERENNIAL RYE GRASS.
        - PERMANENT: 40% MARION BLUE GRASS, 40% DAKOTA BLUE GRASS AND 20% PENN LAWN CREEPING FESCUE.
      - THE SEEDED AREA SHALL THEN BE RAKED WITH A YORK RAKE (A MINIMUM OF 2 PASSES) COVERED AND COMPACTED WITH CULTIPACKER OR OTHER APPROVED METHOD.
    - MULCHING
      - SEEDED AREAS SHALL BE UNIFORMLY MULCHED IMMEDIATELY AFTER SEEDING WITH UNWEATHERED SMALL GRAIN STRAW AT THE RATE OF 1 1/2-2 TONS/ACRE.
      - TIE MULCH DOWN WITH LIQUID ASPHALT AT 0.1 GAL./S.Y. OR EMULSIFIED ASPHALT AT 0.04 GAL./S.Y. OR MULCH NETTING.

SITE ANALYSIS

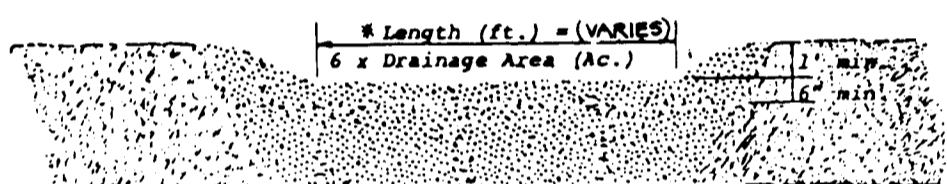
- TOTAL AREA OF PARCEL: 2.012 AC.±
- TOTAL AREA TO BE DISTURBED: 1.82 AC.±
- TOTAL IMPERVIOUS AREA: 1.42 AC.±
- TOTAL AREA TO BE REVEGETATED: 0.4 AC.±

SEDIMENT TRAP #1

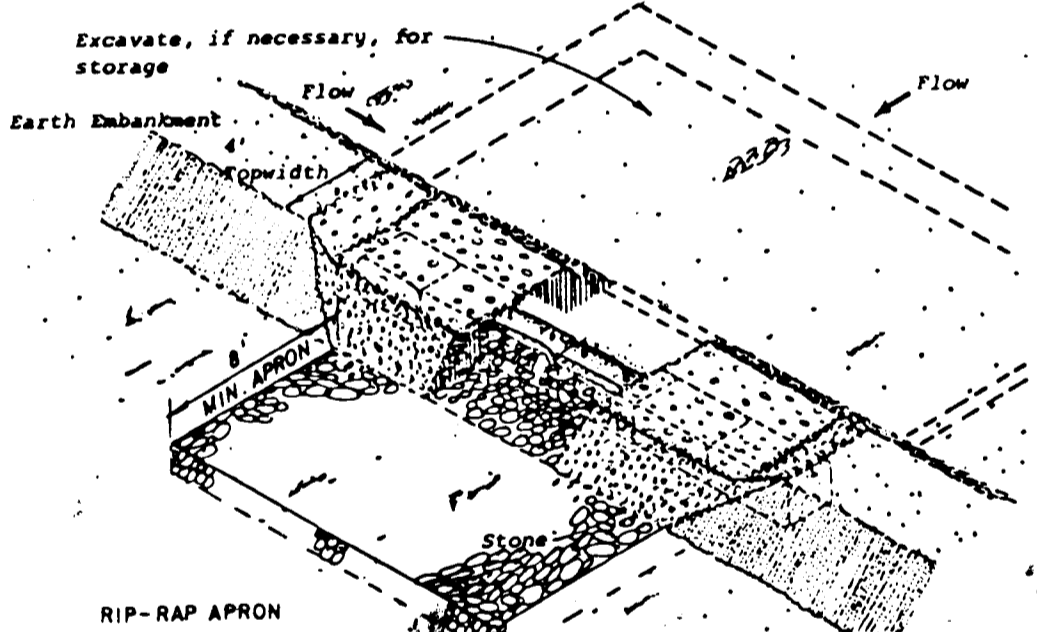
- TYPE OF TRAP = STONE OUTLET TRAP
- DRAINAGE AREA = 1.1 AC.±
- VOLUME REQUIRED = 1980 C.F.
- VOLUME PROVIDED = 1980 C.F.
- TRAP SIZE = 20' x 33'
- DEPTH OF TRAP = 3'
- CREST EL. = 419.10
- BOTTOM EL. = 416.10
- CLEANOUT EL. = 417.60



SECTION



ELEVATION



STONE OUTLET SEDIMENT TRAP

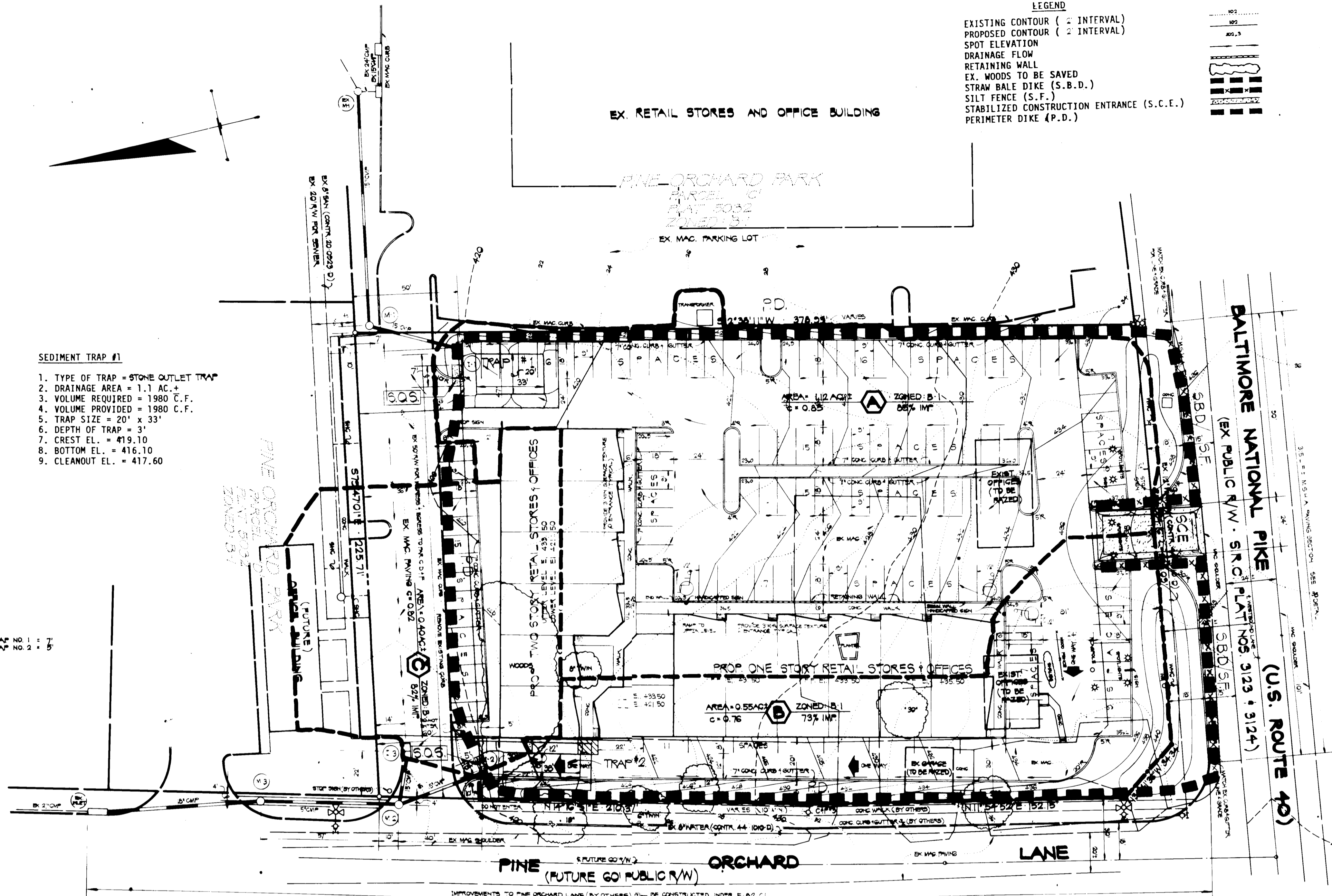
\* TRAP NO. 1 = 7  
\* TRAP NO. 2 = 5

SEDIMENT TRAP #2

- TYPE OF TRAP = STONE OUTLET TRAP
- DRAINAGE AREA = 0.75 AC.±
- VOLUME REQUIRED = 1350 C.F.
- VOLUME PROVIDED = 1350 C.F.
- TRAP SIZE = 12' x 38'
- DEPTH OF TRAP = 3'
- CREST EL. = 418.50
- BOTTOM EL. = 415.50
- CLEANOUT EL. = 417.00

PLAN

SCALE 1" = 30'



PREPARED BY:  
**FISHER, COLLINS & CARTER, INC.**  
CIVIL ENGINEERS & LAND SURVEYORS  
8388 COURT AVENUE  
ELLICOTT CITY, MARYLAND 21043  
(301) 461-2855

ENGINEER'S CERTIFICATE  
I HEREBY CERTIFY THAT THIS PLAN FOR EROSION AND SEDIMENT CONTROL REPRESENTS A PRACTICAL AND WORKABLE PLAN BASED ON MY PERSONAL KNOWLEDGE OF THE SITE CONDITIONS AND THAT IT WAS PREPARED IN ACCORDANCE WITH THE REQUIREMENTS OF THE HOWARD SOIL CONSERVATION DISTRICT.  
*Alfred Carter*  
10/13/83  
SIGNATURE OF ENGINEER DATE

OWNER/DEVELOPER  
VENUS CONSTRUCTION CO.  
1718 M BELMONT AVENUE  
BALTIMORE, MD. 21207  
(301) 265-1440

DEVELOPER'S CERTIFICATE  
"I/WE CERTIFY THAT ALL DEVELOPMENT AND CONSTRUCTION WILL BE DONE ACCORDING TO THIS PLAN OF DEVELOPMENT AND PLAN FOR EROSION AND SEDIMENT CONTROL AND THAT ALL RESPONSIBLE PERSONNEL INVOLVED IN THE CONSTRUCTION PROJECT WILL HAVE A CERTIFICATE OF ATTENDANCE AT A DEPARTMENT OF NATURAL RESOURCES APPROVED TRAINING PROGRAM FOR THE CONTROL OF SEDIMENT AND EROSION BEFORE BEGINNING THE PROJECT. I ALSO AUTHORIZE PERIODIC ON-SITE INSPECTION BY THE HOWARD SOIL CONSERVATION DISTRICT OR THEIR AUTHORIZED AGENTS, AS ARE DEEMED NECESSARY."  
*Paula Quashly*  
10/13/83  
SIGNATURE OF DEVELOPER DATE

REVIEWED FOR HOWARD COUNTY SOIL CONSERVATION DISTRICT AND MEETS TECHNICAL REQUIREMENTS.  
*Thomas M. Kelly*  
10-19-83  
U.S. SOIL CONSERVATION SERVICE DATE

"THIS DEVELOPMENT IS APPROVED FOR EROSION AND SEDIMENT CONTROL BY THE HOWARD SOIL CONSERVATION DISTRICT."  
*James R. Jones*  
10-28-83  
DISTRICT COORDINATOR DATE  
HOWARD SOIL CONSERVATION DISTRICT

APPROVED: OFFICE OF PLANNING AND ZONING  
*Thomas M. Kelly*  
1-4-84  
PLANNING DIRECTOR DATE

APPROVED: DIVISION OF LAND DEVELOPMENT AND ZONING ADMINISTRATION  
*Thomas M. Kelly*  
1-4-84  
DATE

APPROVED: HOWARD COUNTY HEALTH DEPARTMENT FOR PUBLIC WATER AND SEWERAGE SYSTEMS.  
*James R. Jones*  
1-3-84  
DATE  
HEALTH OFFICER

APPROVED: DEPARTMENT OF PUBLIC WORKS FOR PUBLIC WATER AND SEWER AND STORM DRAINAGE SYSTEMS AND ROADS.  
*George F. Normey*  
12-30-83  
DIRECTOR, PUBLIC WORKS DATE

APPROVED: CHIEF, BUREAU OF ENGINEERING  
*George F. Normey*  
DATE

SEDIMENT CONTROL PLAN  
**PINE ORCHARD PARK**  
PARCEL 'A-1'  
2<sup>ND</sup> ELECTION DISTRICT HOWARD COUNTY, MARYLAND  
SCALE: 1" = 30' SHEET 3 OF 3 JUNE 20, 1983  
REVISED SEPTEMBER 6, 1983

NOTE: FOR SEDIMENT CONTROL ONLY  
SEE SHEET 1 OF 3 FOR GRADING

APPROVED  
10-3-83  
*Thomas M. Kelly*