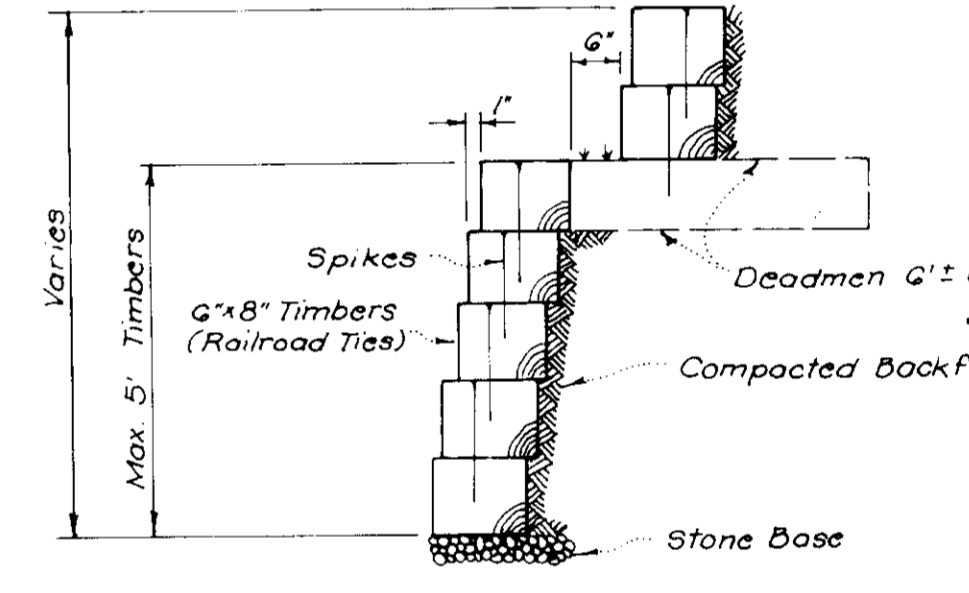


**GENERAL NOTES:**

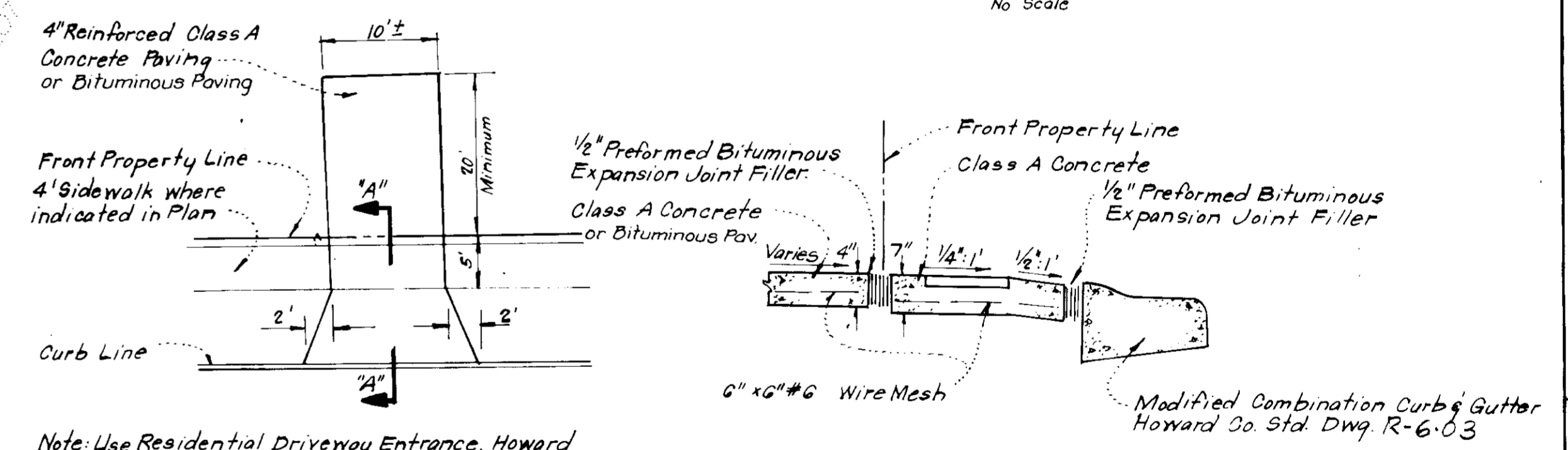
1. The Land included in this plan is zoned NewTown (S.F.M.D.).
2. The Lots shown on this plan are covered by Final Development Plan Phase 170 recorded in Plats 3054-A-48 thru 3054-A-51.
3. All coordinates are based on Maryland State Grid System. Elevations are based on U.S. Coast & Geodetic Survey Mean Sea Level Datum of 1929.
4. The area covered in this submission is located on Tax Map #30437.
5. The total area included in this plan is 1.018 Acres.
6. All road ways are public & existing.
7. Any damage to county owned rights of way or paving shall be corrected at the developer's expense.

**LEGEND:**

1. Contour Interval 2 Ft.
2. Existing Contour
3. Proposed Contour
4. Spot Elevation
5. Direction of Drainage
6. Retaining Wall
7. Existing Trees to be Retained
8. Basement Walkout - B.W.O.



**TIMBER RETAINING WALL**  
No Scale



**DRIVEWAY ABUTTING MODIFIED COMB CURB & GUTTER**  
Section "A"- "A"  
No Scale  
Sewer Code 5335300, Water Code GOB  
Note: Materials and Construction shall be in accordance with Howard Co. Road Construction Code.

**NOTE:** The contractor or developer shall contact the Construction Inspection/Survey Division, 24 hours in advance of commencement of work at 792-7272

**SURVEYOR'S CERTIFICATE**

I hereby certify that the information contained hereon is the same as shown on previously approved S.D.P. 79-27C with the following exceptions:  
1. House Type and Grading has been revised on Lots 23, 24 and 25.

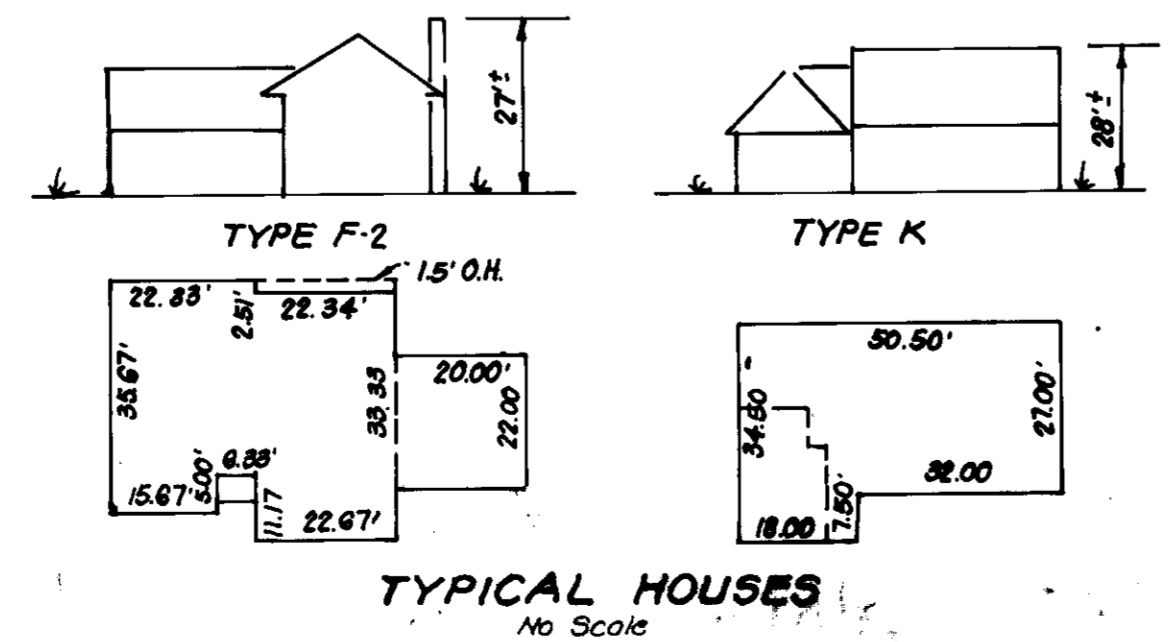
I further certify that the Sediment & Erosion control measures, as previously approved, will not be affected, the grading is substantially the same as originally approved, the building setbacks comply with Howard County Zoning and Subdivision Regulations, and the lot has the same geometric configuration as shown on the respective recorded subdivision Plat.

6-21-83 Date  
DONALD B. SACKETT  
Registered Land Surveyor  
Md. No. 6059

**PLAN SECTION "A"- "A"**

APPROVED  
DIVISION OF LAND DEVELOPMENT & ZONING ADMINISTRATION  
HOWARD COUNTY, MARYLAND  
DATE 7-15-83

<p><b>CLARK • FINEFROCK &amp; SACKETT</b> ENGINEERS • PLANNERS • SURVEYORS 11315 LOCKWOOD DRIVE SILVER SPRING, MARYLAND 20904 (301) 593-3400</p>		
DESIGNED J.M.E.	REVISED SITE DEVELOPMENT PLAN LOTS 23, 24 AND 25	SCALE 1"=30'
DRAWN J.M.E.	<b>COLUMBIA</b> VILLAGE OF LONGREACH SECTION 1 AREA 10 P.H.A. 6TH ELECTION DISTRICT HOWARD COUNTY, MARYLAND	DRAWING 1041
CHECKED J.M.E.	FOR: COLUMBIA BUILDERS, INC. Three LakeFront North Bldg. Suite 200 Columbia, Maryland 21044	JOB NO. 83-056
DATE June, 1983		FILE NO. 83-056



**TYPICAL HOUSES**  
No Scale

APPROVED FOR PUBLIC WATER AND PUBLIC SEWERAGE SYSTEMS, HOWARD COUNTY HEALTH DEPARTMENT	8-4-83 DATE
APPROVED HOWARD COUNTY OFFICE OF PLANNING & ZONING PLANNING DIRECTOR	8-4-83 DATE
APPROVED FOR PUBLIC WATER AND PUBLIC SEWERAGE, STORM DRAINAGE SYSTEMS AND PUBLIC ROADS HOWARD COUNTY DEPARTMENT OF PUBLIC WORKS	8-1-83 DATE
CHIEF BUREAU OF ENGINEERING	7-29-83 DATE