

BUILDING "B"
 F.F. ELEV. = 311.00
 FLOOR AREA = 43,005 SQ. FT.
 OFFICE = 14,882 SQ. FT.
 WAREHOUSE = 28,123 SQ. FT.

BUILDING "C"
 F.F. ELEV. = 315.00
 FLOOR AREA = 39,128 SQ. FT.
 OFFICE = 17,150 SQ. FT.
 WAREHOUSE = 21,978 SQ. FT.

NOTE: SEE SHEET 3 OF 9 FOR "GENERAL NOTES".
 NOTE: BUILDING DIMENSIONS SHOWN ARE OUTSIDE DIMENSIONS.
 * NOTE: ALL SIDEWALKS ABUTTING CURBS TO BE 6.0' WIDE FROM FACE OF CURB - SEE DETAIL THIS SHEET. OTHER SIDEWALKS SHALL BE 5.0' WIDE.

LEGEND:

EXISTING CONTOURS 316
PROPOSED CONTOURS 316
EXISTING CURB & GUTTER 316
PROPOSED STD. CURB & GUTTER 316
PROP. REV. SLOPE CURB & GUTTER 316
PROPOSED PAVING (BIT. CONC.) TYPE 'A' 316
PROPOSED PAVING (BIT. CONC.) TYPE 'B' 316
PROPOSED CONCRETE 316

FIN. GRADE SPOT ELEVATIONS (TOP OF CURB 0.60' HIGHER)
 NO. OF PARKING SPS. (INCLUDING HANDICAPPED) ②

SITE DATA

AREA OF SUBMITTAL	14,471 ACRES
AREA TO BE DISTURBED	570,957 SF / 13.23 ACRES
AREA TO BE VEGETATIVELY STABILIZED	106,233 SF / 3.82 ACRES
TOTAL BUILDING COVERAGE	104,958 SF
FLOOR AREA TO SITE RATIO WITHOUT PAVING	379/1447 = 26.2%
% OF BUILDING COVERAGE WITH PAVING	1.85%
% OF OPEN SPACE	1.55%
PROPOSED LAND USE	OFFICES AND WAREHOUSE
EXISTING ZONING	N.T. AND M-1, FDP-197-A, FDP PLAT 205A-D-475
TITLE REFERENCE	RIVERS CORPORATE PARK SECTION 2, AREA 1 PARCEL A PLAT 5352

PARKING TABULATION

PARKING REQUIRED	WAREHOUSE 100 EMPLOYEES / 2 = 50 SPACES
	OFFICE 51,137 SF / 500 = 103 SPACES
TOTAL REQ'D	153 SPACES*
	*(2 HANDICAP SPS REQ'D)
PARKING PROVIDED	513 SPACES**
	** (14 HANDICAP SPS INCLUDED)

APPROVED
 PLANNING BOARD
 OF HOWARD COUNTY
 DATE: 6-1-83

DESIGN/BUILDERS
 McCormick Construction Company, Inc.

ENGINEER'S CERTIFICATE
 GEORGE WILLIAM STEPHENS JR. AND ASSOCIATES INC.
 ENGINEERS
 303 ALLEGHENY AVE. TOWSON, MD. 21204
 (301) 825-8120

OWNER / DEVELOPER
 McCormick Properties, Inc.
 BUSINESS COMMUNITY DEVELOPERS
 11011 McCormick Road
 Hunt Valley, Maryland 21031
 (301) 467-7700

OWNER / DEVELOPER CERTIFICATE
 DESIGNED BY: [Signature]
 DRAWN BY: [Signature]
 CHECKED BY: [Signature]
 REVISIONS
 10-25-83 Parking Spaces Detail Handicapped Spaces
 11-9-80 CONC. PAD. ELEV. 311.00
 BY: [Signature] DATE: 1-1-83
 TITLE: [Signature]

OFFICE AND R/D FACILITIES
 RIVERS CORPORATE PARK
 SECTION 2, AREA 1, PARCEL 'A'
 COLUMBIA
 HOWARD COUNTY, MARYLAND ELECTION DISTRICT NO. 6
 SCALE: AS SHOWN APRIL 12, 1983
 PLAT NO. 5352 TAX MAP # 2 SHEET 1 OF 9
 SDP-83-175

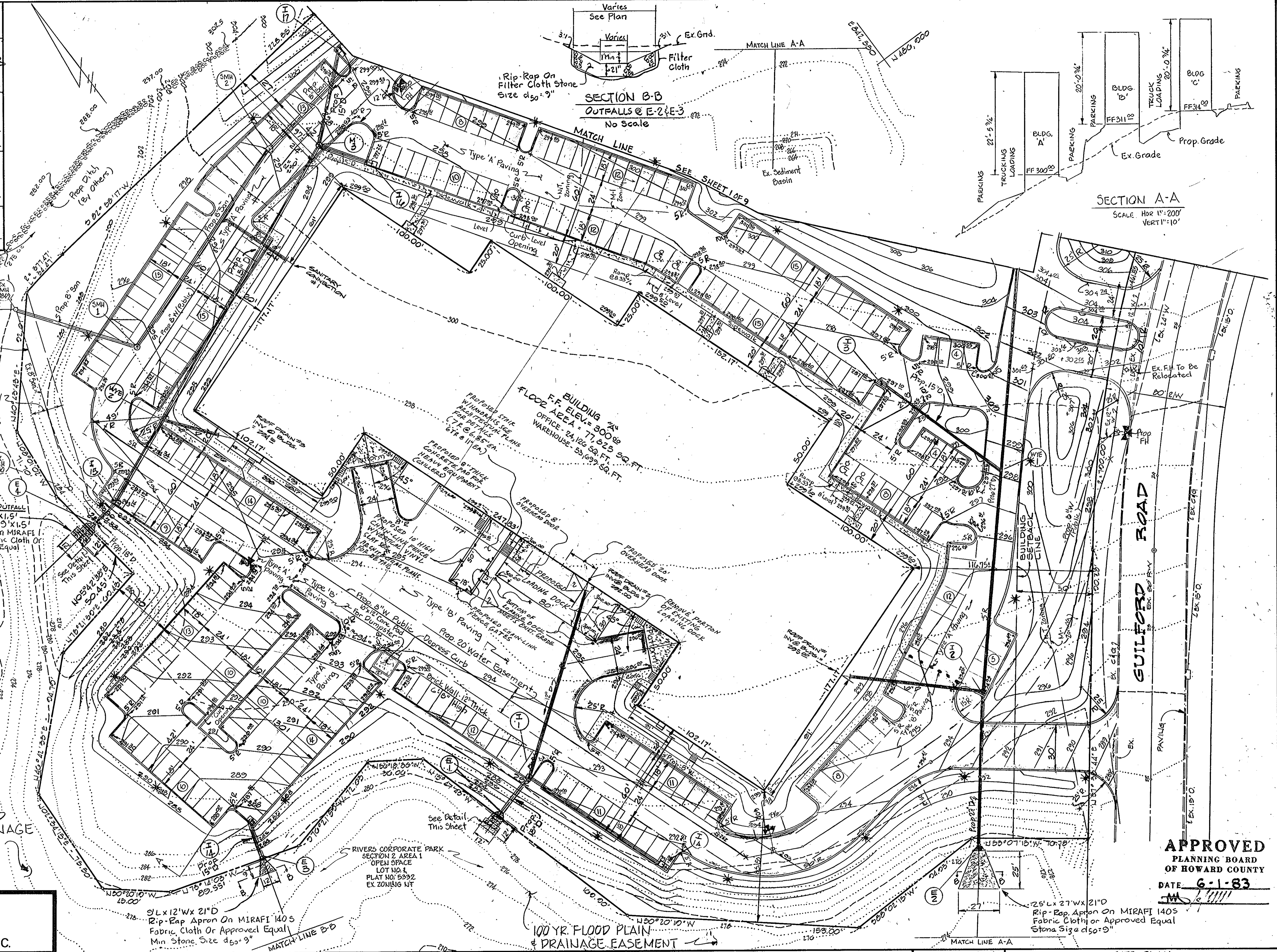
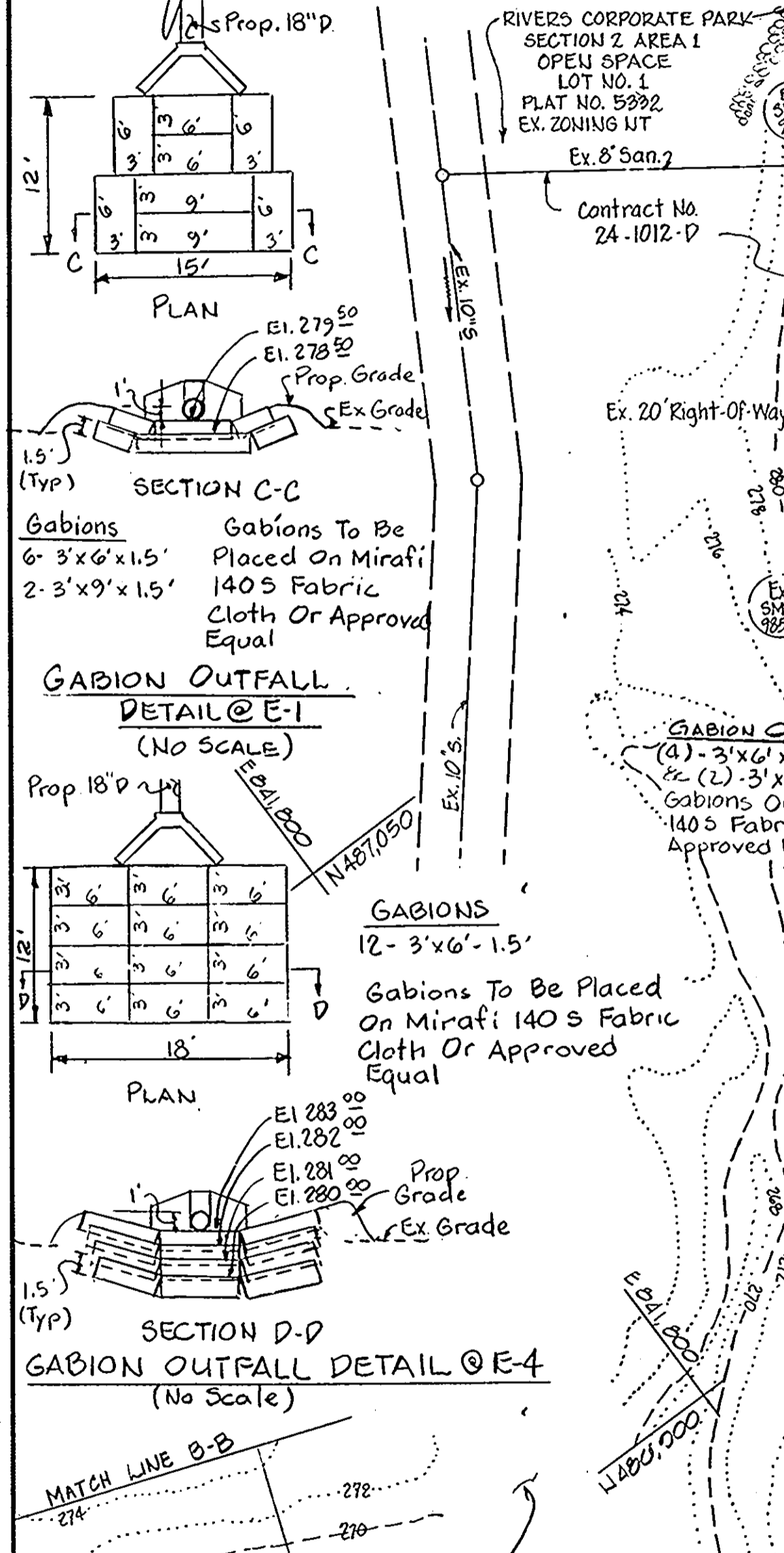
APPROVED FOR PUBLIC WATER AND PUBLIC SEWERAGE SYSTEM
 HOWARD COUNTY HEALTH DEPARTMENT
 COUNTY HEALTH OFFICER: *[Signature]* DATE: 9-20-83

APPROVED: HOWARD COUNTY OFFICE OF PLANNING AND ZONING
 PLANNING DIRECTOR: *[Signature]* DATE: 9-22-83
 CHIEF DIVISION OF LAND DEVELOPMENT AND ZONING ADMINISTRATION: *[Signature]* DATE: 9-21-83

APPROVED: FOR PUBLIC WATER, PUBLIC SEWERAGE, STORM DRAINAGE AND ROADS
 HOWARD COUNTY DEPARTMENT OF PUBLIC WORKS
 DIRECTOR: *[Signature]* DATE: 9-15-83
 CHIEF OF BUREAU OF ENGINEERING: *[Signature]* DATE: 9-15-83

HOWARD SOIL CONSERVATION DISTRICT
 THIS DEVELOPMENT IS APPROVED FOR SOIL EROSION AND SEDIMENT CONTROL BY THE HOWARD SOIL CONSERVATION DISTRICT.
 BY: *[Signature]* DATE: 9-14-83
 APPROVED: HOWARD SOIL CONSERVATION DISTRICT

REVIEWED FOR THE HOWARD SOIL CONSERVATION DISTRICT AND MEETS TECHNICAL REQUIREMENTS.
 SIGNATURE: *[Signature]* DATE: 9-11-83
 THE UNITED STATES SOIL CONSERVATION SERVICE



DESIGN/BUILDERS
MCCORMICK CONSTRUCTION COMPANY, INC.

GEORGE WILLIAM STEPHENS JR. AND ASSOCIATES INC.
 ENGINEERS
 303 ALLEGHENY AVE. TOWSON, MD. 21204
 (301) 825-8120

ENGINEER'S CERTIFICATE
Japobrata Chakrabarti 8930 4-14-83
 JAPOBRATA CHAKRABARTI REG. NO. DATE

OWNER / DEVELOPER
McCormick Properties, Inc.
 BUSINESS COMMUNITY DEVELOPERS
 11011 McCormick Road
 Hunt Valley, Maryland 21031
 (301) 667-7700

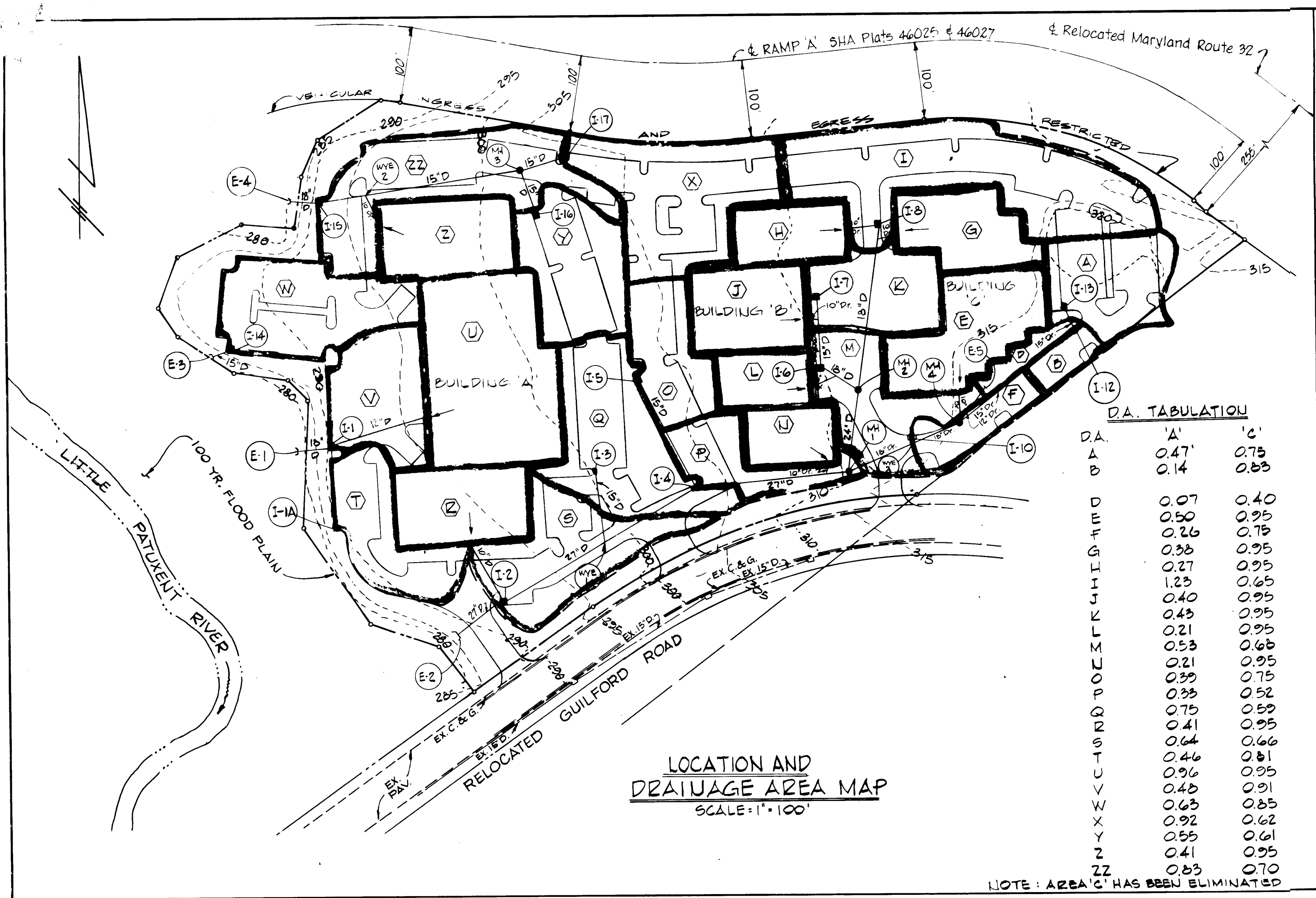
OWNER/DEVELOPER CERTIFICATE
 BY: *Donald A. Cal* DATE: 4-14-83
 TITLE: EXECUTIVE VICE-PRESIDENT

DESIGNED BY: RRC/TC
 DRAWN BY: TUB/RZ/TC
 CHECKED BY: RRC/TC
REVISIONS
 10-25-83 Changed Roof Drain #2 From 10" to 12" D Handicapped Spaces Detail

OFFICE AND R/D FACILITIES
 RIVERS CORPORATE PARK
 SECTION 2, AREA 1, PARCEL 'A'
 COLUMBIA

HOWARD COUNTY, MARYLAND ELECTION DISTRICT NO. 6
 SCALE: AS SHOWN APRIL 12, 1983
 Plat No. 5392 TAX MAP # 42 SHEET 2 OF 9
SDP-83-175c

APPROVED
 PLANNING BOARD
 OF HOWARD COUNTY
 DATE: 6-1-83
[Signature]



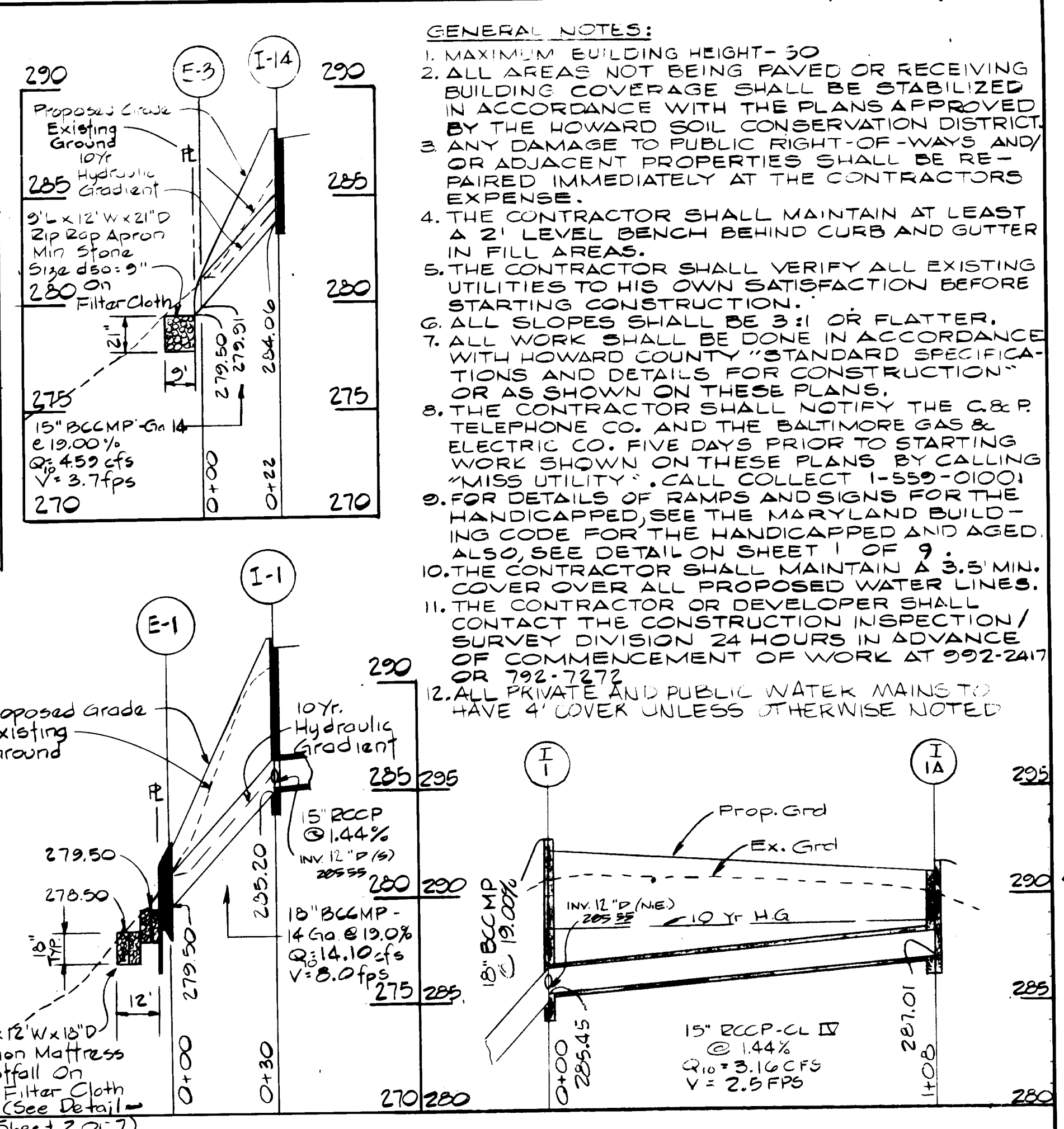
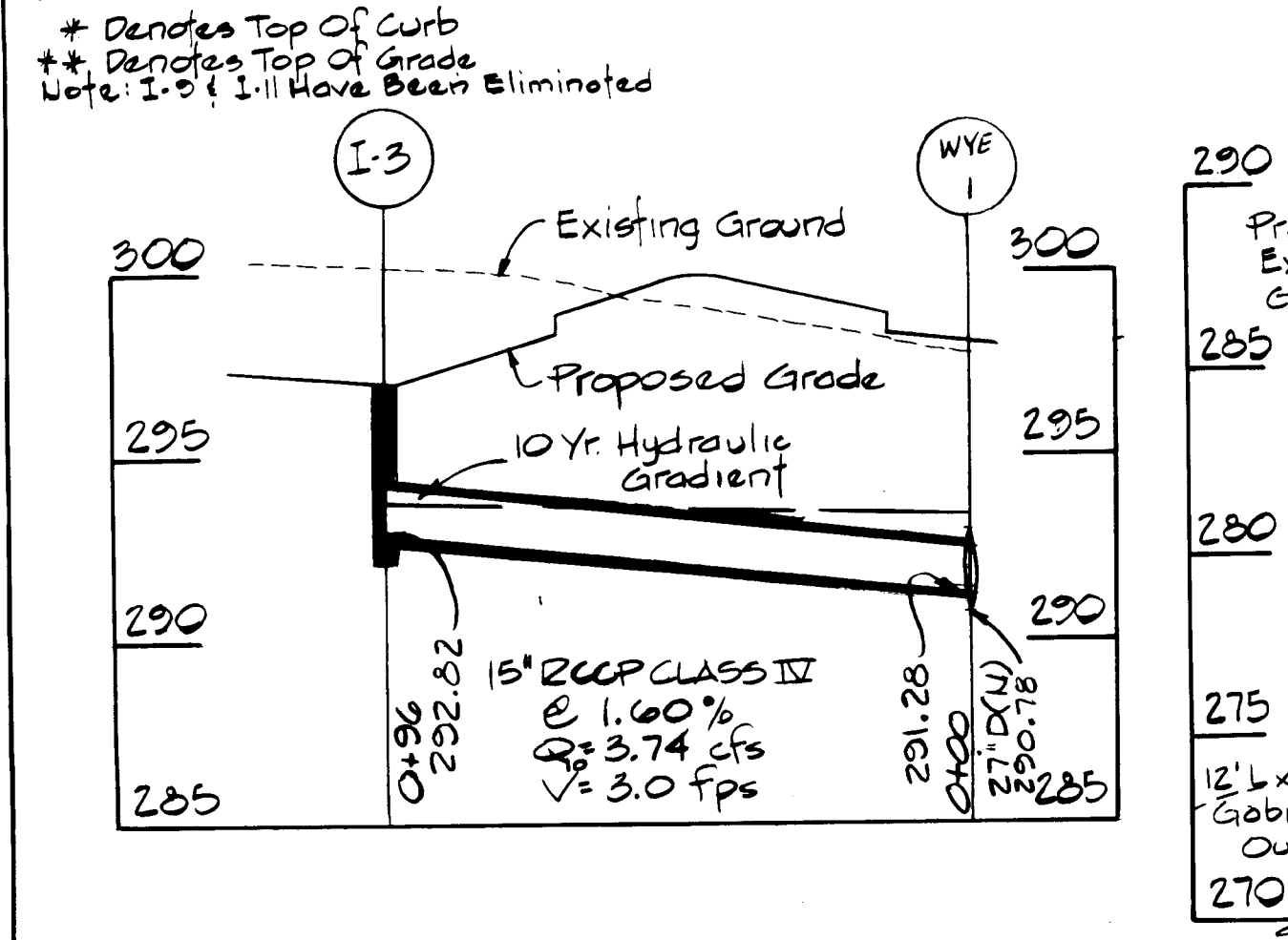
D.A. TABULATION

D.A.	'A'	'C'
A	0.47	0.75
B	0.14	0.83
C		
D	0.07	0.40
E	0.50	0.95
F	0.26	0.75
G	0.38	0.95
H	0.27	0.95
I	1.23	0.65
J	0.40	0.95
K	0.43	0.95
L	0.21	0.95
M	0.53	0.66
N	0.21	0.95
O	0.35	0.75
P	0.33	0.52
Q	0.75	0.59
R	0.41	0.95
S	0.64	0.66
T	0.46	0.81
U	0.96	0.95
V	0.40	0.91
W	0.63	0.85
X	0.92	0.62
Y	0.55	0.61
Z	0.41	0.95
ZZ	0.83	0.70

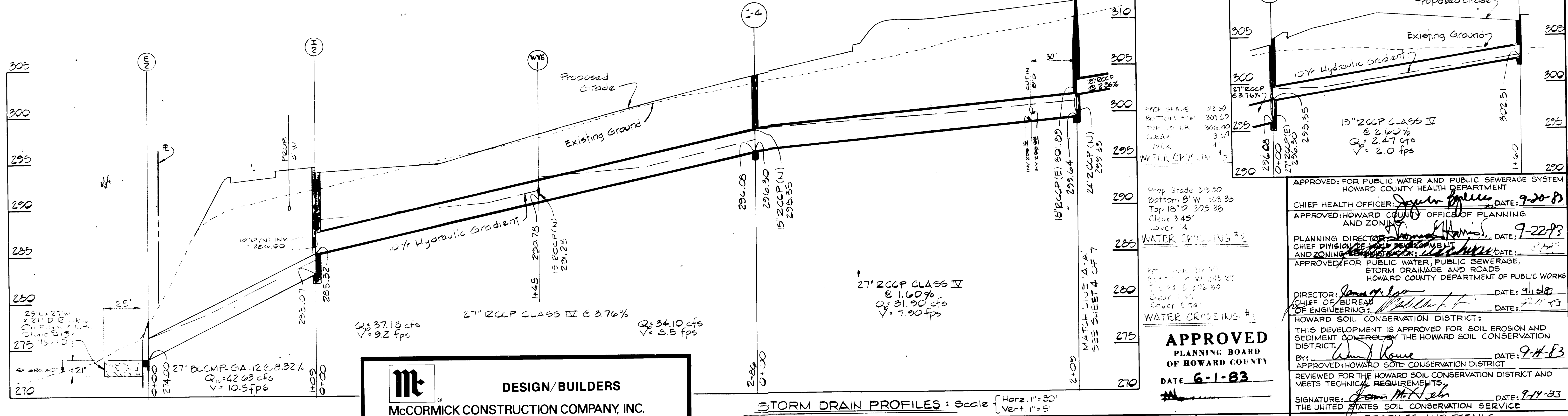
NOTE: AREA 'C' HAS BEEN ELIMINATED

STRUCTURE SCHEDULE

NO	TYPE	TOP ELEV	INV. IN.	INV. OUT
I-1	D'bl 15" Comb 504.54		285.45	285.20
I-2	D'bl 15" Comb 504.54		285.32	285.07
I-3	D'bl 15" Comb 504.54	297.70*		297.82
I-4	D'bl 15" Comb 504.54	304.53**	295.35	296.08
I-5	15" Comb 504.54	306.79**		302.51
I-6	D'bl 15" 504.23	306.55**	302.10	301.85
I-7	D'bl 15" 504.23	306.55**		302.64
I-8	D'bl 15" Comb 504.54	305.62*		303.74
WE-3	Brick Y 501.11			303.10
E-10	15" Comb 504.54	315.29**		305.40
WE-1	Brick Y 501.11			305.90
I-12	15" Comb 504.54	315.15*	309.25	309.25
I-13	D'bl 15" Comb 504.54	313.82**		309.65
I-1A	D'bl 15" Comb 504.54	292.54**		287.01
I-14	D'bl 15" Comb 504.54	286.15**		284.02
I-15	D'bl 15" Comb 504.54	299.74**	287.00	283.51
I-16	15" Comb 504.23	295.02**		293.92
I-17	D'bl 15" Comb 504.54	299.54**		294.75
WH-1	5" Brick MH 5.01	312.00	299.85	299.64
WH-2	4" Brick MH 5.01	308.75	301.45	300.35
WH-3	4" Brick MH 5.01	297.76	294.14	293.55
WE-1	Brick Y 501.11			291.42
E-1	1" A Headwall 505.11			279.50
E-2	1" A Headwall 505.11			274.00
E-3	1" Metal End Section 505.11		279.21	279.50
E-4	1" A Headwall 505.11			283.00
E-5	1" Metal End Section 505.11		311.57	311.50
WH-4	4" Brick MH 5.01	314.60	307.36	307.07



- GENERAL NOTES:**
- MAXIMUM BUILDING HEIGHT-30
 - ALL AREAS NOT BEING PAVED OR RECEIVING BUILDING COVERAGE SHALL BE STABILIZED IN ACCORDANCE WITH THE PLANS APPROVED BY THE HOWARD SOIL CONSERVATION DISTRICT.
 - ANY DAMAGE TO PUBLIC RIGHT-OF-WAYS AND/OR ADJACENT PROPERTIES SHALL BE REPAIRED IMMEDIATELY AT THE CONTRACTOR'S EXPENSE.
 - THE CONTRACTOR SHALL MAINTAIN AT LEAST A 2' LEVEL BENCH BEHIND CURB AND GUTTER IN FILL AREAS.
 - THE CONTRACTOR SHALL VERIFY ALL EXISTING UTILITIES TO HIS OWN SATISFACTION BEFORE STARTING CONSTRUCTION.
 - ALL SLOPES SHALL BE 3:1 OR FLATTER.
 - ALL WORK SHALL BE DONE IN ACCORDANCE WITH HOWARD COUNTY STANDARD SPECIFICATIONS AND DETAILS FOR CONSTRUCTION.
 - THE CONTRACTOR SHALL NOTIFY THE C & P TELEPHONE CO. AND THE BALTIMORE GAS & ELECTRIC CO. FIVE DAYS PRIOR TO STARTING WORK SHOWN ON THESE PLANS BY CALLING WORK SHOWN ON THESE PLANS BY CALLING "MISS UTILITY". CALL COLLECT 1-550-0100.
 - FOR DETAILS OF RAMP AND SIGNS FOR THE HANDICAPPED, SEE THE MARYLAND BUILDING CODE FOR THE HANDICAPPED AND AGED. ALSO, SEE DETAIL ON SHEET 1 OF 9.
 - THE CONTRACTOR SHALL MAINTAIN A 3.5 MIN. COVER OVER ALL PROPOSED WATER LINES.
 - THE CONTRACTOR OR DEVELOPER SHALL CONTACT THE CONSTRUCTION INSPECTION/SURVEY DIVISION 24 HOURS IN ADVANCE OF COMMENCEMENT OF WORK AT 992-2417 OR 792-7272.
 - ALL PRIVATE AND PUBLIC WATER MAINS TO HAVE 4' COVER UNLESS OTHERWISE NOTED.



GEORGE WILLIAM STEPHENS JR. AND ASSOCIATES INC.
ENGINEERS
303 ALLEGHENY AVE. TOWSON, MD. 21204
(301) 825-8120

ENGINEER'S CERTIFICATE
TAPOBRATA CHAKRABARTI REG. NO. DATE

OWNER / DEVELOPER
McCormick Properties, Inc.
BUSINESS COMMUNITY DEVELOPERS
11011 McCormick Road
Hunt Valley, Maryland 21031
(301) 667-7700

OWNER / DEVELOPER CERTIFICATE
BY: DATE: TITLE:

APPROVED PLANNING BOARD OF HOWARD COUNTY
DATE: 6-1-83

APPROVED FOR PUBLIC WATER AND PUBLIC SEWERAGE SYSTEM
HOWARD COUNTY HEALTH DEPARTMENT
CHIEF HEALTH OFFICER: DATE: 9-20-83

APPROVED: HOWARD COUNTY OFFICE OF PLANNING AND ZONING
DATE: 9-22-83

APPROVED FOR PUBLIC WATER, PUBLIC SEWERAGE, STORM DRAINAGE AND ROADS
HOWARD COUNTY DEPARTMENT OF PUBLIC WORKS
DIRECTOR: DATE: 9-15-83

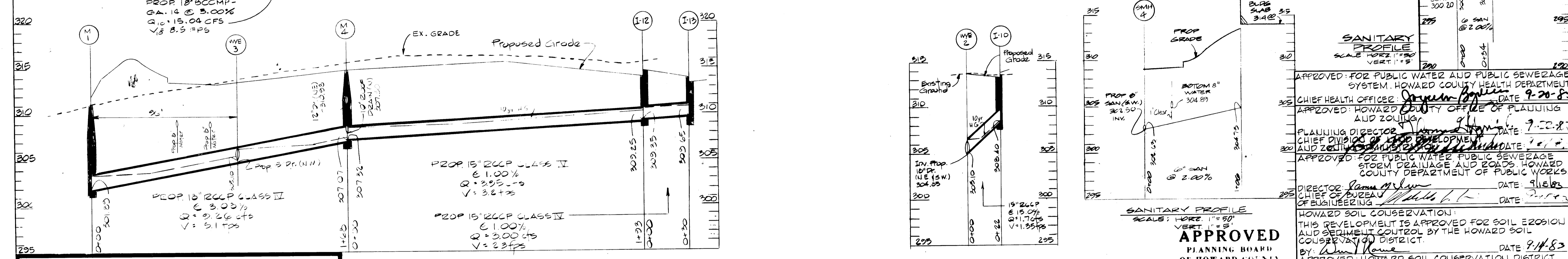
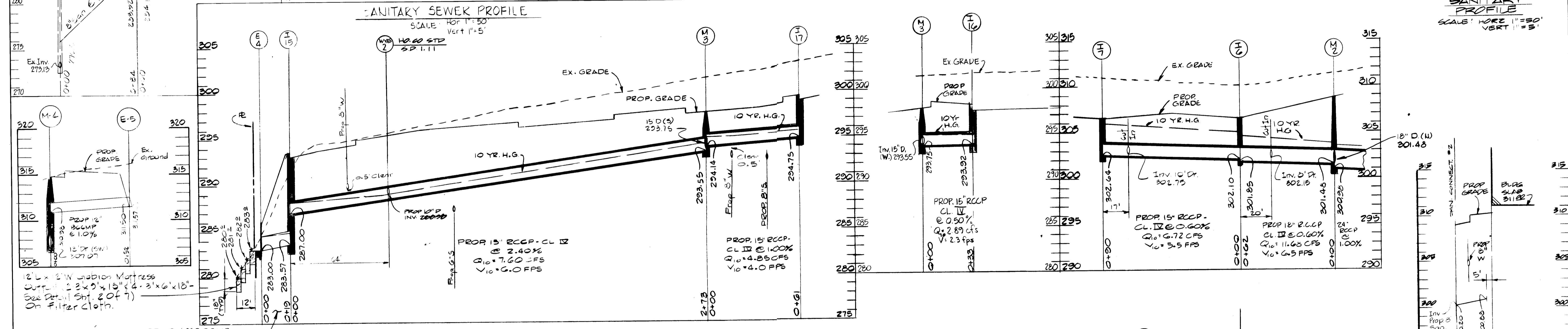
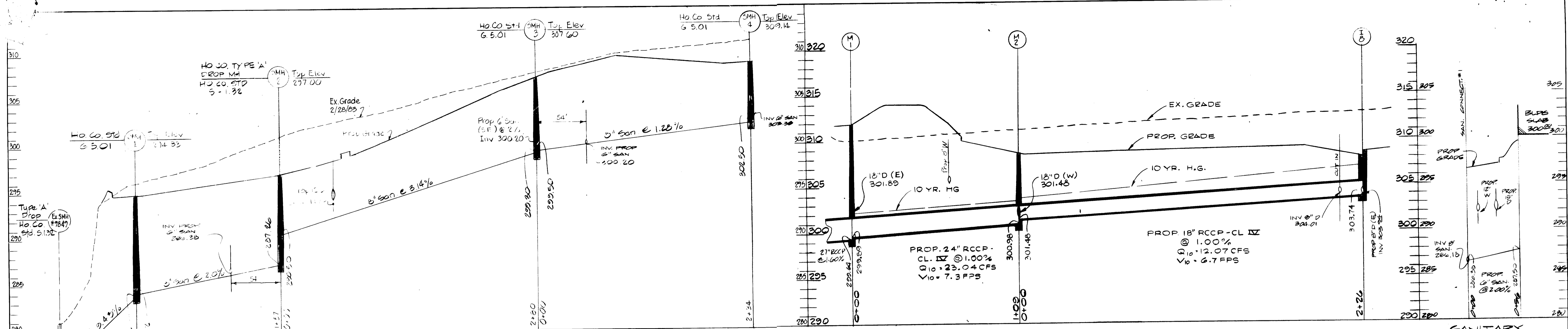
APPROVED: HOWARD COUNTY SOIL CONSERVATION DISTRICT
REVIEWED FOR THE HOWARD COUNTY SOIL CONSERVATION DISTRICT AND MEETS TECHNICAL REQUIREMENTS.
SIGNATURE: DATE: 9-14-83

DESIGNED BY: TBL/TC
DRAWN BY: RAZ
CHECKED BY: PC/TC

OFFICE AND R/D FACILITIES
RIVERS CORPORATE PARK
SECTION 2, AREA 1, PARCEL 'A'
COLUMBIA

HOWARD COUNTY, MARYLAND ELECTION DISTRICT NO. 6
SCALE: AS SHOWN APRIL 12, 1983
TAX MAP #42 SHEET 3 OF 9

SDP-83-175.



STORM DRAIN PROFILES
 Scale { Horz. 1"=30' Vert. 1"=5' }

Mc DESIGN/BUILDERS
 McCORMICK CONSTRUCTION COMPANY, INC.
 GEORGE WILLIAM STEPHENS JR. AND ASSOCIATES INC.
 ENGINEERS
 303 ALLEGHENY AVE. TOWSON, MD. 21204
 (301) 825-8120

ENGINEER'S CERTIFICATE
 TAPOBRATA CHAKRABARTI REG NO. DATE

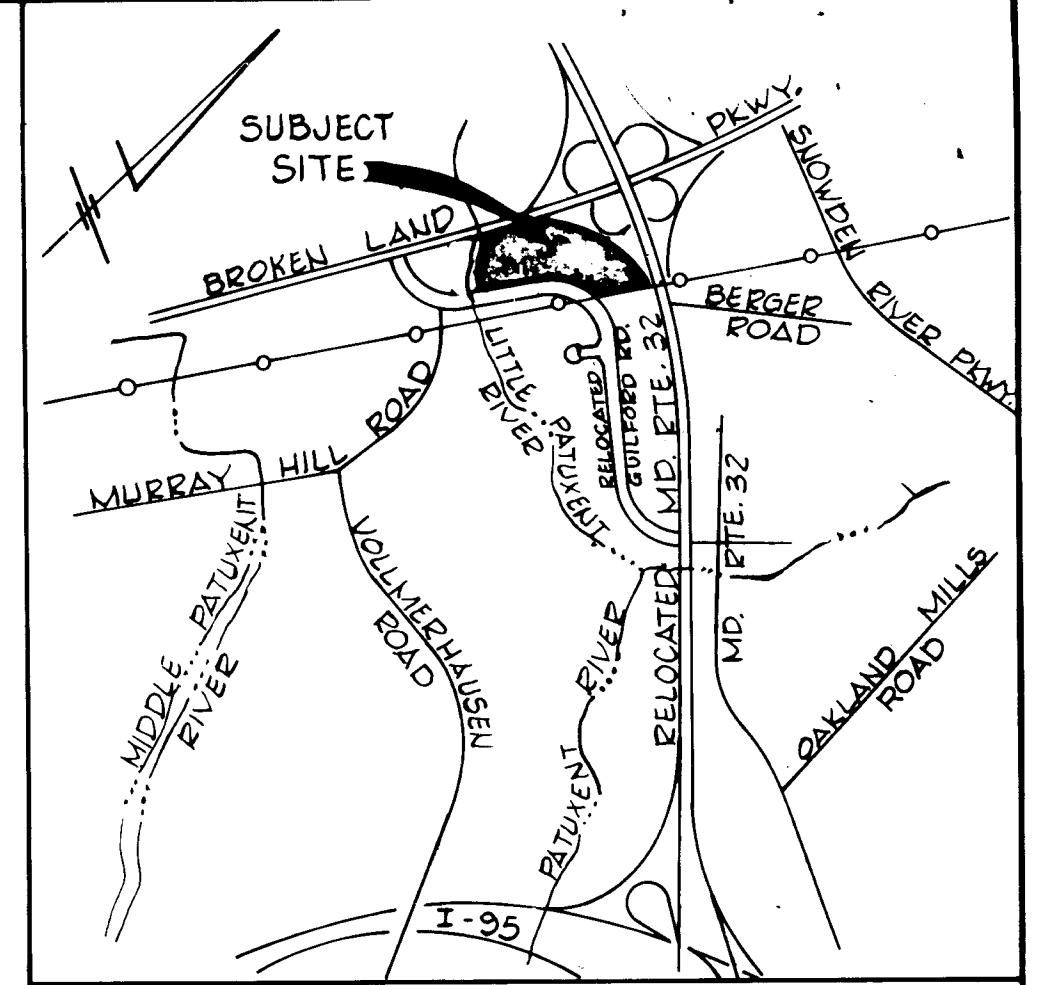
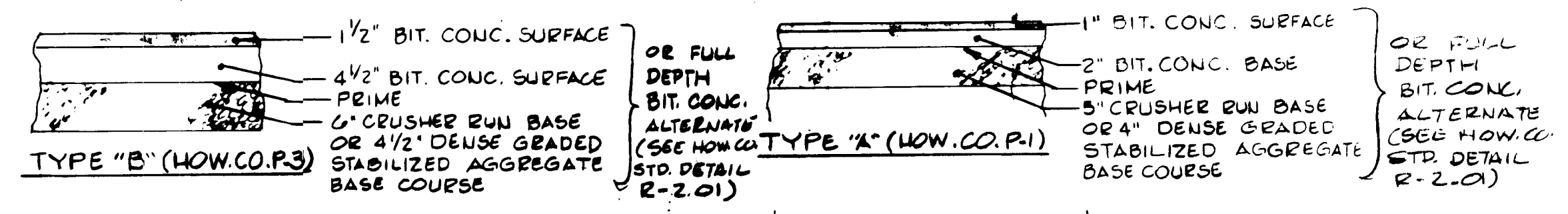
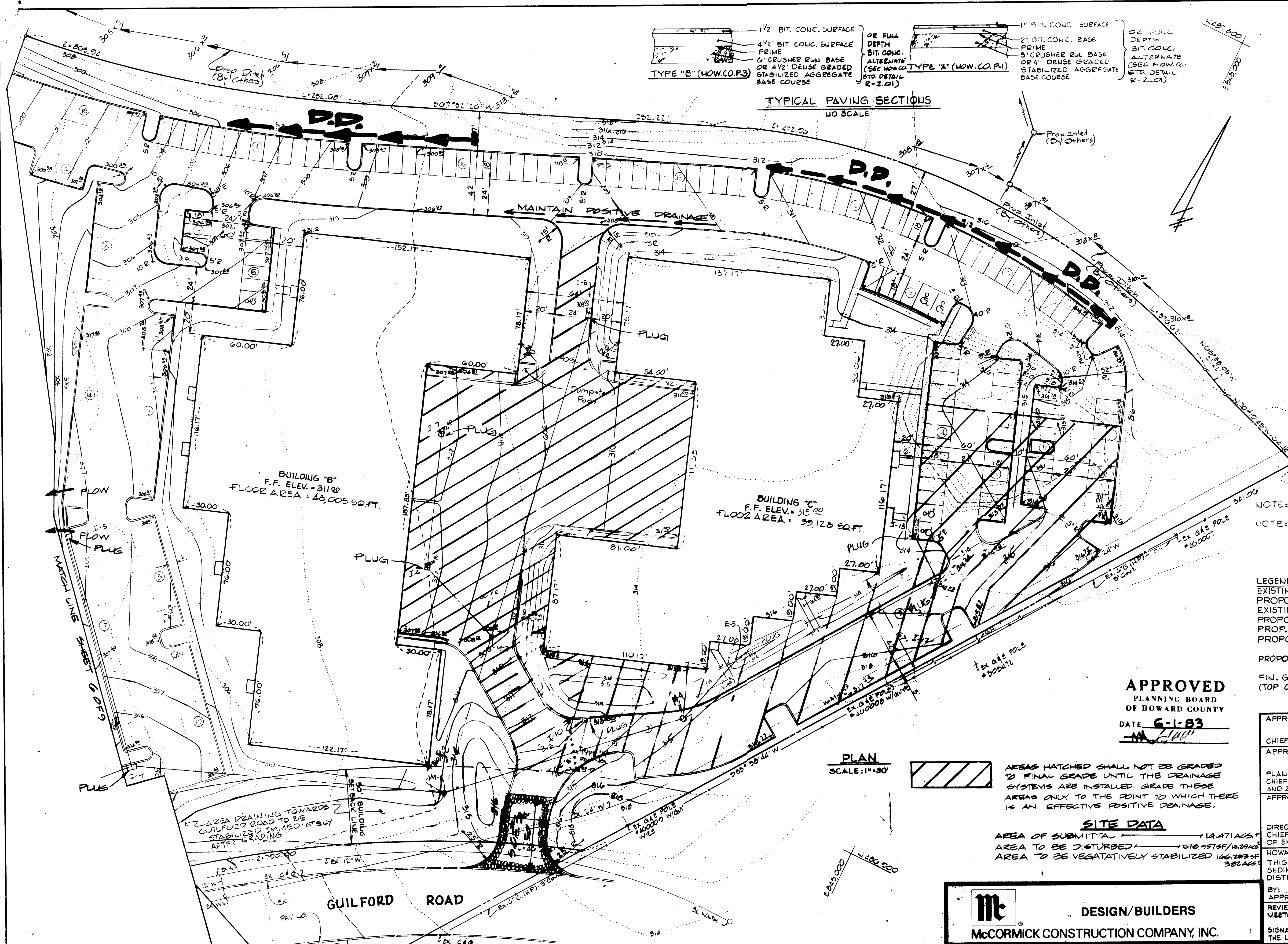
OWNER / DEVELOPER
McCormick Properties, Inc.
 BUSINESS COMMUNITY DEVELOPERS
 11011 McCormick Road
 Hunt Valley, Maryland 21031
 (301) 667-7700

OWNER/DEVELOPER CERTIFICATE
 BY: DATE: TITLE:

DESIGNED BY: TLT/TC
 DRAWN BY: RZ/TLB
 CHECKED BY: PC/TC
 REVISIONS
 10-25-82 - Checked Inv
 12-10-82 - Inv. M-4 To
 12-17-82
APPROVED
 PLANNING BOARD
 OF HOWARD COUNTY
 DATE: 6-1-83
 HOWARD COUNTY, MARYLAND ELECTION DISTRICT NO. 6
 SCALE: AS SHOWN APRIL 12, 1983
 TAX MAP #42 SHEET 4 OF 9
 SDP-83-175

APPROVED FOR PUBLIC WATER AND PUBLIC SEWERAGE SYSTEM, HOWARD COUNTY HEALTH DEPARTMENT
 CHIEF HEALTH OFFICER: *[Signature]* DATE: 9-20-82
 APPROVED: HOWARD COUNTY OFFICE OF PLANNING AND ZONING
 PLANNING DIRECTOR: *[Signature]* DATE: 9-22-82
 CHIEF DIVISION OF DEVELOPMENT AND ZONING: *[Signature]* DATE: 9-22-82
 APPROVED FOR PUBLIC WATER, PUBLIC SEWERAGE, STORM DRAINAGE AND ROADS, HOWARD COUNTY DEPARTMENT OF PUBLIC WORKS
 DIRECTOR: *[Signature]* DATE: 9-15-82
 CHIEF OF BUREAU OF ENGINEERING: *[Signature]* DATE: 9-15-82

HOWARD SOIL CONSERVATION:
 THIS DEVELOPMENT IS APPROVED FOR SOIL EROSION AND SEDIMENT CONTROL BY THE HOWARD SOIL CONSERVATION DISTRICT.
 BY: *[Signature]* DATE: 9-14-83
 APPROVED: HOWARD SOIL CONSERVATION DISTRICT
 REVIEWED FOR THE HOWARD SOIL CONSERVATION DISTRICT AND MEETS TECHNICAL REQUIREMENTS.
 SIGNATURE: *[Signature]* DATE: 9-14-83
 THE UNITED STATES SOIL CONSERVATION SERVICE



BENCH MARK: ELEVATION: 304.70
 DESCRIPTION: FLANGE BOLT ON FIRE HYDRANT STA 14+30 GULFORD ROAD

NOTE: SEE SHEET #7 OF 9 FOR "GENERAL NOTES" & SEQUENCE OF CONSTRUCTION
 NOTE: BUILDING DIMENSIONS SHOWN ARE OUTSIDE DIMENSIONS.

LEGEND:
 EXISTING CONTOURS
 PROPOSED CONTOURS
 EXISTING CURB & GUTTER
 PROPOSED STD. CURB & GUTTER
 PROP. REV. SLOPE CURB & GUTTER
 PROPOSED PAVING (BIT. CONC.)
 PROPOSED CONCRETE
 FIN. GRADE SPOT ELEVATIONS (TOP OF CURB 0.60' HIGHER)

APPROVED
 PLANNING BOARD
 OF HOWARD COUNTY
 DATE: 6-1-83

PLAN
 SCALE: 1" = 30'

AREAS HATCHED SHALL NOT BE GRADED TO FINAL GRADE UNTIL THE DRAINAGE SYSTEMS ARE INSTALLED. GRADE THESE AREAS ONLY TO THE POINT TO WHICH THERE IS AN EFFECTIVE POSITIVE DRAINAGE.

SITE DATA
 AREA OF SUBMITTAL 14.471 AC ±
 AREA TO BE DISTURBED 1570.257 SF ± (39.29 AC)
 AREA TO BE VEGETATIVELY STABILIZED 106,283 SF ± (2.42 AC)

DESIGN/BUILDERS
McCORMICK CONSTRUCTION COMPANY, INC.

ENGINEER'S CERTIFICATE
 I hereby certify that this plan for erosion and sediment control represents a practical and workable plan based on my personal knowledge of the site conditions and that it was prepared in accordance with the requirements of the Howard Soil Conservation District.

ENGINEERS
GEORGE WILLIAM STEPHENS JR. AND ASSOCIATES INC.
 303 ALLEGHENY AVE. TOWSON, MD. 21204
 (301) 825-8120

OWNER / DEVELOPER
McCormick Properties, Inc.
 BUSINESS COMMUNITY DEVELOPERS
 11011 McCormick Road
 Hunt Valley, Maryland 21031
 (301) 667-7700

DESIGNED BY: PRE/LS
DRAWN BY: TLD/DEM
CHECKED BY: PRE/AC

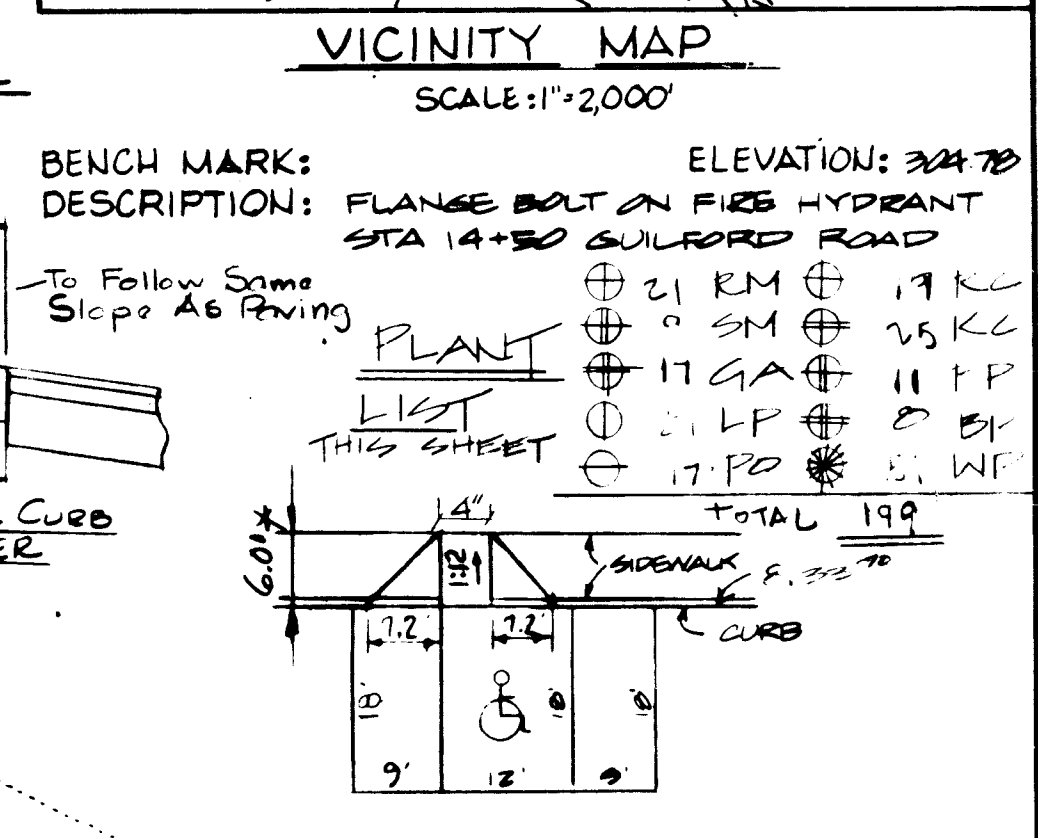
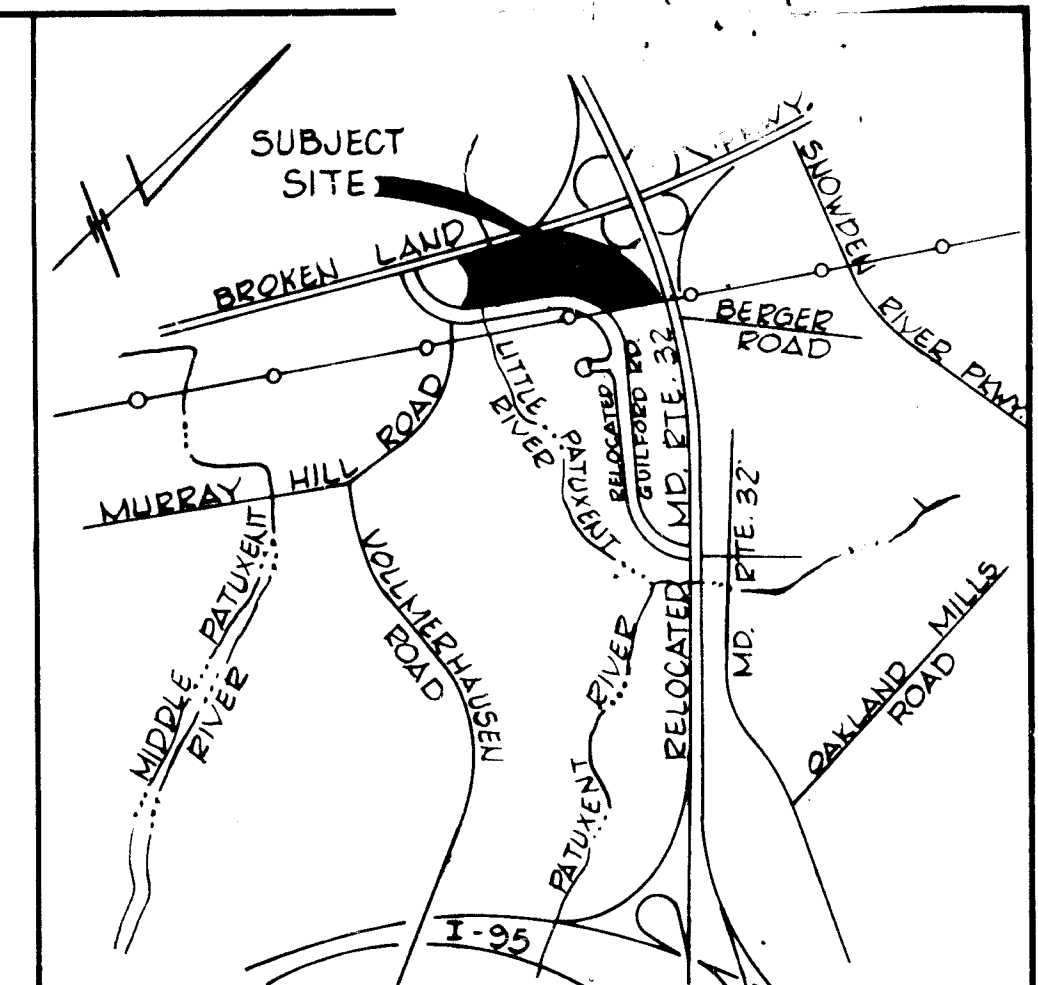
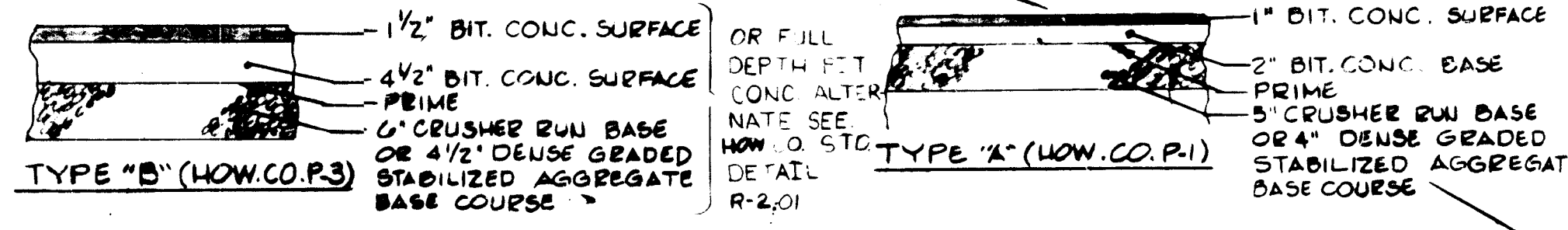
REVISIONS

NO.	DESCRIPTION	DATE

SEPTIMENT & EROSION CONTROL PLAN FOR OFFICE AND R/D FACILITIES
 RIVERS CORPORATE PARK
 SECTION 2, AREA 1, PARCEL 'A'
 COLUMBIA

HOWARD COUNTY, MARYLAND ELECTION DISTRICT NO. 6
 SCALE: AS SHOWN APRIL 12, 1983
 Plot No. 5324 TAX MAP 42 SHEET 5 OF 9

SDP-83-175c



STORM WATER MANAGEMENT FOR THIS SITE HAS BEEN WAIVED.

NOTE: SEE SHEET 3 OF 9 FOR "GENERAL NOTES".
 NOTE: BUILDING DIMENSIONS SHOWN ARE OUTSIDE DIMENSIONS.
 * NOTE: ALL SIDEWALKS ABUTTING CURBS TO BE 6.0' WIDE FROM FACE OF CURB - SEE DETAIL THIS SHEET. OTHER SIDEWALKS SHALL BE 5.0' WIDE.

LEGEND:
 EXISTING CONTOURS
 PROPOSED CONTOURS
 EXISTING CURB & GUTTER
 PROPOSED STD. CURB & GUTTER
 PROP. REV. SLOPE CURB & GUTTER
 PROPOSED PAVING (BIT. CONC.) TYPE A
 PROPOSED PAVING (BIT. CONC.) TYPE B
 PROPOSED CONCRETE

FIN. GRADE SPOT ELEVATIONS (TOP OF CURB 0.60' HIGHER)
 NO. OF PARKING SPS. (INCLUDING HANDICAPPED)
 NEW VALLEY BAL. 12. MID. 196-2195 M.A.

APPROVED: FOR PUBLIC WATER AND PUBLIC SEWERAGE SYSTEM
 HOWARD COUNTY HEALTH DEPARTMENT
 CHIEF HEALTH OFFICER: *[Signature]* DATE: 9-2-83
 APPROVED: HOWARD COUNTY OFFICE OF PLANNING AND ZONING
 PLANNING DIRECTOR: *[Signature]* DATE: 9-22-83
 CHIEF OF LAND DEVELOPMENT AND ZONING ADMINISTRATION: *[Signature]* DATE: 9-22-83
 APPROVED: FOR PUBLIC WATER, PUBLIC SEWERAGE STORM DRAINAGE AND ROADS
 HOWARD COUNTY DEPARTMENT OF PUBLIC WORKS
 DIRECTOR: *[Signature]* DATE: 9/25/83
 CHIEF OF BUREAU OF ENGINEERING: *[Signature]* DATE: 9/25/83
 HOWARD SOIL CONSERVATION:
 THIS DEVELOPMENT IS APPROVED FOR SOIL EROSION AND SEDIMENT CONTROL BY THE HOWARD SOIL CONSERVATION DISTRICT.
 BY: *[Signature]* DATE: 9-14-83
 APPROVED: HOWARD SOIL CONSERVATION DISTRICT
 REVIEWED FOR THE HOWARD SOIL CONSERVATION DISTRICT AND METS TECHNICAL REQUIREMENTS.
 SIGNATURE: *[Signature]* DATE: 9-14-83
 THE UNITED STATES SOIL CONSERVATION SERVICE

SITE DATA

AREA OF SUBMITTAL	14.471 ACRES
AREA TO BE DISTURBED	570,957 SF / 13.09 ACRES
AREA TO BE VEGETATIVELY STABILIZED	146,235 SF / 3.32 ACRES
TOTAL BUILDING COVERAGE	164,958 SF
FLOOR AREA TO SITE RATIO WITHOUT PAVING	379/1447 = 26.2%
% OF BUILDING COVERAGE WITH PAVING	135%
% OF OPEN SPACE	135%
PROPOSED LAND USE	OFFICES AND WAREHOUSE
EXISTING ZONING	M-T AND M-1, FUR-1A, FDP PLAT 2054 A-475
TITLE REFERENCE	RIVERS CORPORATE PARK SECT ON 2, AREA PARCEL A PLAT 5347

PARKING TABULATION

PARKING REQUIRED WAREHOUSE 1/2 EMPLOYEES/2	= 50 SPACES
OFFICE 51/121 SF/500	= 103 SPACES
TOTAL REQ'D	153 SPACES
* (12 HANDICAP SPS REQ'D)	
PARKING PROVIDED	513 SPACES**
** (14 HANDICAP SPS INCLUDED)	

BUILDING "B"
 F.F. ELEV. = 311.88
 FLOOR AREA = 40,006 SQ. FT.
 OFFICE = 14,884 SQ. FT.
 WAREHOUSE = 25,122 SQ. FT.

BUILDING "C"
 F.F. ELEV. = 310.88
 FLOOR AREA = 39,128 SQ. FT.
 OFFICE = 17,100 SQ. FT.
 WAREHOUSE = 22,028 SQ. FT.

APPROVED
 PLANNING BOARD
 OF HOWARD COUNTY
 DATE: 6-1-83

GEORGE WILLIAM STEPHENS JR. AND ASSOCIATES INC.
 ENGINEERS
 303 ALLEGHENY AVE. TOWSON, MD. 21284
 (301) 825-8120

ENGINEER'S CERTIFICATE
 TAPOBRATA CHAKRABARTI REG. NO. DATE

DESIGN/BUILDERS
 McCORMICK CONSTRUCTION COMPANY, INC.

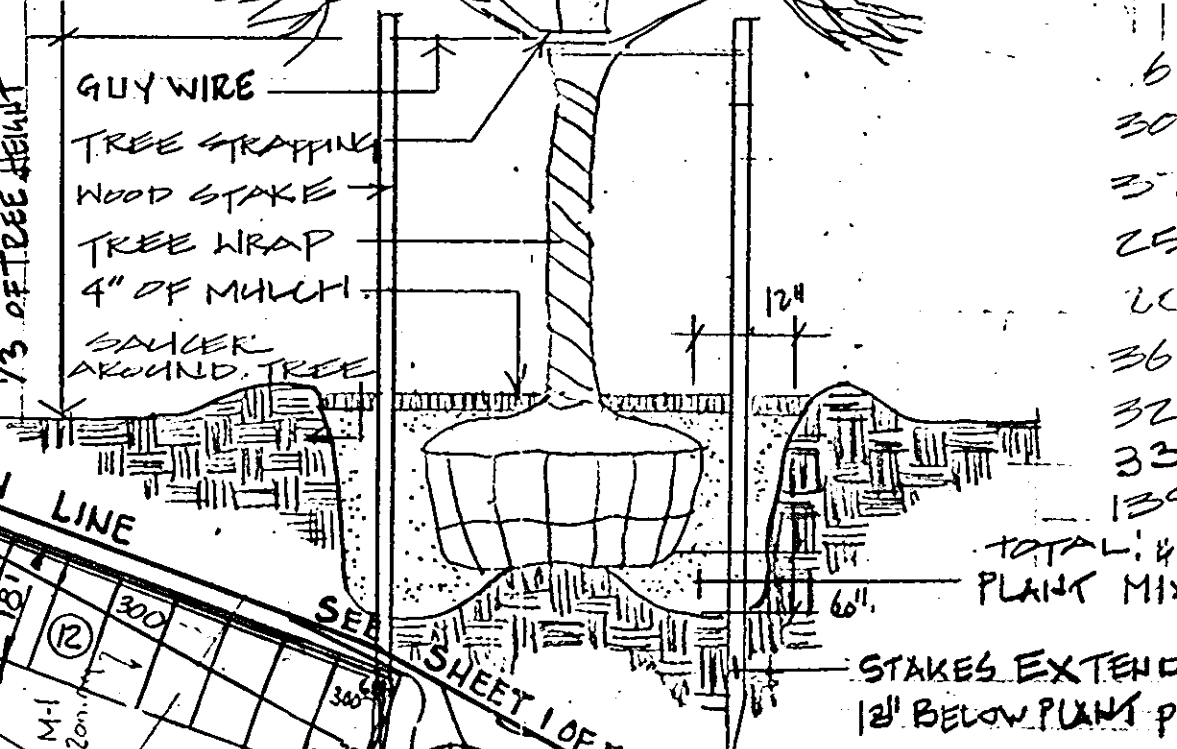
OWNER / DEVELOPER
McCormick Properties, Inc.
 BUSINESS COMMUNITY DEVELOPERS
 11011 McCormick Road
 Hunt Valley, Maryland 21031
 (301) 667-7700

OWNER/DEVELOPER CERTIFICATE
 DESIGNED BY: *[Signature]*
 DRAWN BY: *[Signature]*
 CHECKED BY: *[Signature]*
 REVISIONS
 BY: *[Signature]* DATE: 4/1/83
 TITLE:

OFFICE AND R/D FACILITIES
 RIVERS CORPORATE PARK
 SECTION 2, AREA 1, PARCEL A
 COLUMBIA
 HOWARD COUNTY, MARYLAND ELECTION DISTRICT NO. 6
 SCALE: AS SHOWN 1983
 Plot No. 5322 TAX MAP #22 SHEET 8 OF 9
SDP-83-175.

APPROVED FOR PUBLIC WATER AND PUBLIC SEWERAGE SYSTEM
 HOWARD COUNTY HEALTH DEPARTMENT
 COUNTY HEALTH OFFICER: *[Signature]* DATE: 9-21-83
 APPROVED: HOWARD COUNTY OFFICE OF PLANNING AND ZONING
 PLANNING DIRECTOR: *[Signature]* DATE: 9-22-83
 CHIEF OF LAND DEVELOPMENT AND ZONING ADMINISTRATION: *[Signature]* DATE: 9-22-83
 APPROVED: FOR PUBLIC WATER, PUBLIC SEWERAGE, STORM DRAINAGE AND ROADS
 HOWARD COUNTY DEPARTMENT OF PUBLIC WORKS
 DIRECTOR: *[Signature]* DATE: 9-15-83
 CHIEF OF BUREAU OF ENGINEERING: *[Signature]* DATE: 9-15-83
 HOWARD SOIL CONSERVATION DISTRICT
 THIS DEVELOPMENT IS APPROVED FOR SOIL EROSION AND SEDIMENT CONTROL BY THE HOWARD SOIL CONSERVATION DISTRICT.
 BY: *[Signature]* DATE: 9-14-83
 APPROVED: HOWARD SOIL CONSERVATION DISTRICT
 REVIEWED FOR THE HOWARD SOIL CONSERVATION DISTRICT AND MEETS TECHNICAL REQUIREMENTS.
 SIGNATURE: *[Signature]* DATE: 9-14-83
 THE UNITED STATES SOIL CONSERVATION SERVICE

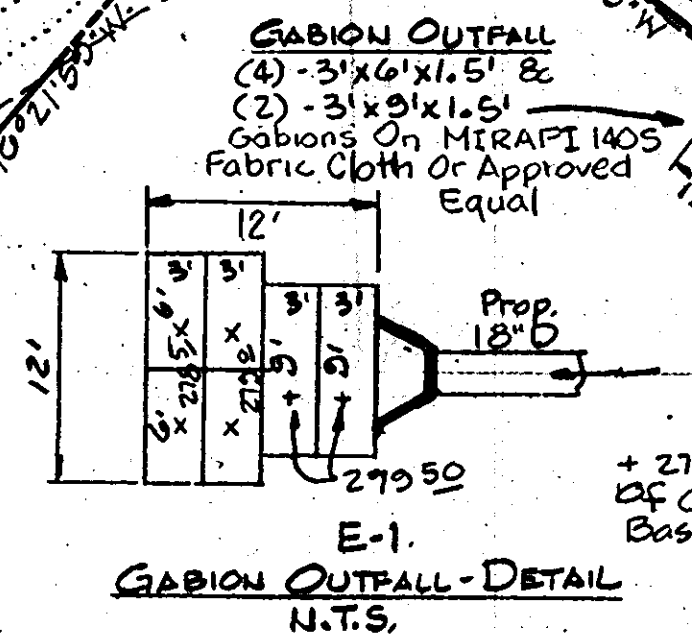
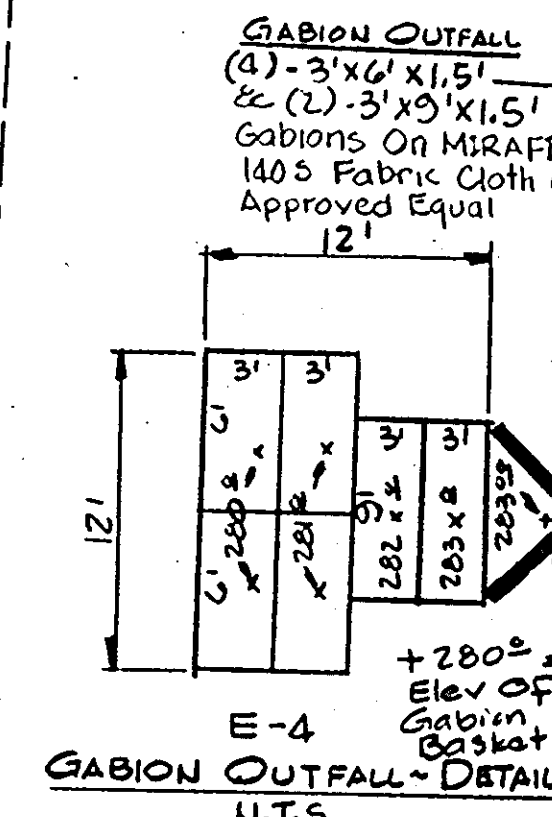
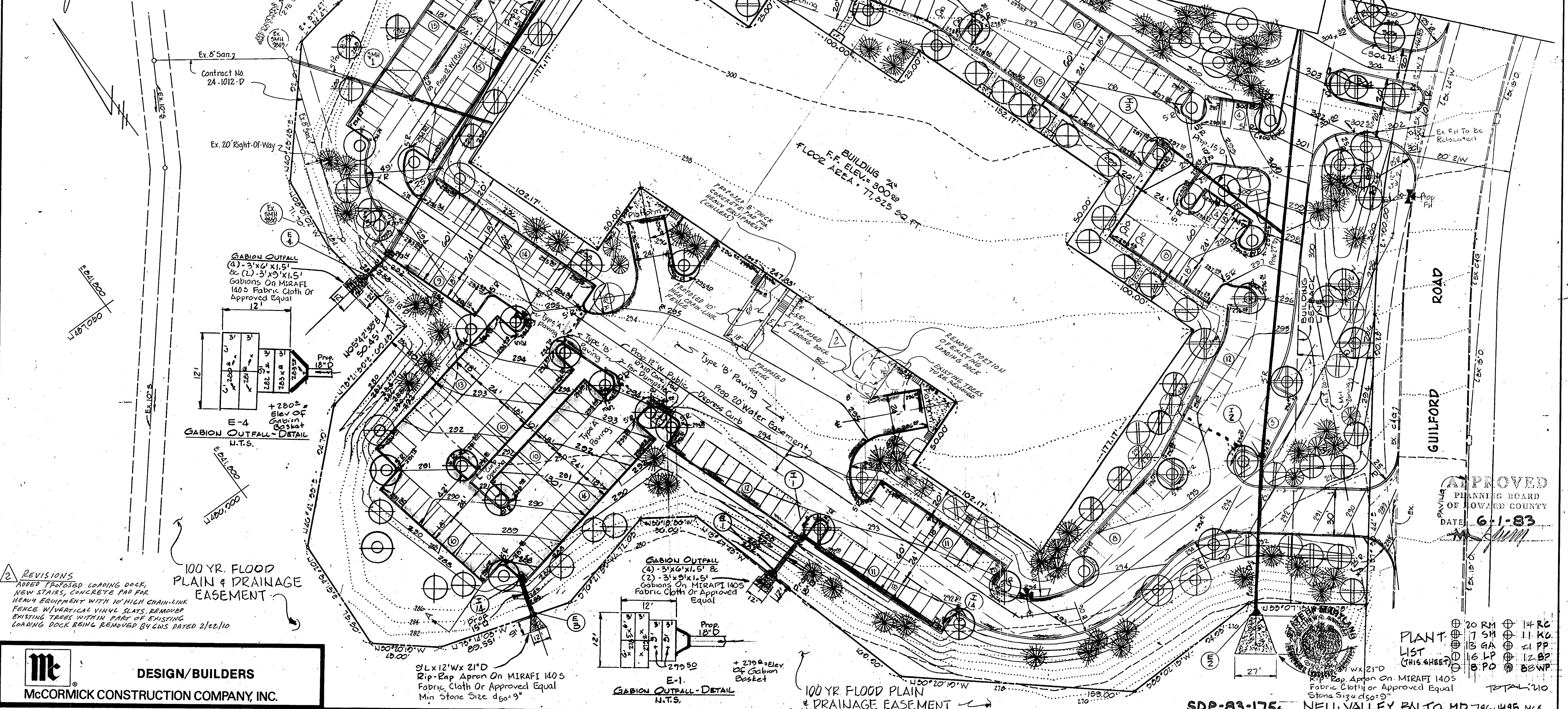
TYPICAL TREE STAKING DETAIL
 (NO SCALE)



PLANT LIST (BOTH SHEETS)

ACER RUBRUM "OCTOBER GLORY" / AM. RED MAPLE	2 1/2" - 3" CAL. / 12-14' HT. B&B P.H.
ACER SACCHARUM "GREEN MOUNTAIN" / SUGAR MAPLE	
FRAXINUS P. "LANCENATA" / SEEDLEGS GREEN ASH	
PLATANUS A. "BLOOD GOOD" / LONDON PLANE	
QUERCUS PALUSTRIS / PIN OAK	
PIRUS C. "BRADFORD" / BRADFORD PEAR	
PRUNUS SPANANZAN / FLOWERING CHERRY	2-2 1/2" CAL. 8-10' HT.
PRUNUS C. "THUNDERBOLD" / FLOWERING PLUM	
MALUS 'RADIANT' / FLOWERING CRABAPPLE	
PIRUS STROBUS / EASTERN WHITE PINE	6-8' HT.

NOTE: LOCATION & SELECTION OF ALL PROPOSED PLANT MATERIAL IS TO BE APPROVED IN THE FIELD BY THE LANDSCAPE ARCHITECT. ALL PLANT MATERIAL IS TO BE GUARANTEED BY THE LANDSCAPE CONTRACTOR FOR ONE FULL GROWING SEASON AFTER THE LAST PLANT HAS BEEN INSTALLED & APPROVED BY THE LANDSCAPE ARCHITECT AS PER COLUMBIA SPECIFICATIONS. THE CONTRACTOR AND/OR OWNER SHALL VERIFY THE CORRECT LOCATION OF ALL UNDERGROUND UTILITIES PRIOR TO INSTALLATION. CONTRACTOR RESERVES THE RIGHT TO RELOCATE PLANT MATERIAL BASED ON FIELD CONDITIONS, ROOMS, ETC. ANY SUBSTITUTIONS IN PLANT MATERIAL MUST HAVE THE WRITTEN APPROVAL OF THE LANDSCAPE ARCHITECT.



REVISIONS
 2. ADDED PROPOSED LOADING DOCK, NEW STAIRS, CONCRETE PAD FOR HEAVY EQUIPMENT WITH 10' HIGH CHAIN-LINK FENCE W/ VERTICAL VINYL SLATS. REMOVE EXISTING TREES WITHIN PART OF EXISTING LOADING DOCK BEING REMOVED BY CWS DATED 2/22/10

100 YR. FLOOD PLAIN & DRAINAGE EASEMENT

APPROVED
 PLANNING BOARD
 OF HOWARD COUNTY
 DATE: 6-1-83

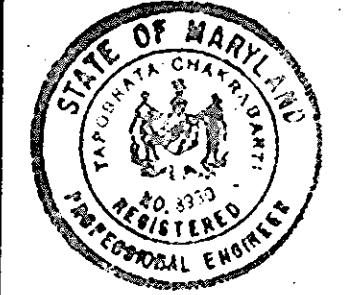
PLANT LIST
 (THIS SHEET)

20 RM	14 RC
7 SM	11 K6
13 GA	21 PP
16 LP	12 B2
8 PD	88 WP

TOTAL: 210

Mc
DESIGN/BUILDERS
 McCORMICK CONSTRUCTION COMPANY, INC.

GEORGE WILLIAM STEPHENS JR. AND ASSOCIATES INC.
 ENGINEERS
 303 ALLEGHENY AVE. TOWSON, MD. 21204
 (301) 825-8120



ENGINEER'S CERTIFICATE
[Signature] 8930 4-14-83
 TAPOBRATA CHAKRABARTI REG. UO. DATE

OWNER / DEVELOPER
McCormick Properties, Inc.
 BUSINESS COMMUNITY DEVELOPERS
 301-667-7122
 HURT VALLEY, MARYLAND

OWNER/DEVELOPER CERTIFICATE
[Signature] 4-19-83
 BY: *[Signature]* DATE: 4/19/83
 TITLE: EXECUTIVE VICE PRESIDENT

SDP-83-175
 DESIGNED BY: PR/TC
 DRAWN BY: TL8/R2/TC
 CHECKED BY: PR/TC
 REVISIONS

PLANTING PLAN
 FOR
OFFICE AND R/D FACILITIES
 RIVERS CORPORATE PARK
 SECTION 2, AREA 1, PARCEL 'A'
 COLUMBIA
 HOWARD COUNTY, MARYLAND ELECTION DISTRICT NO. 6
 SCALE: AS SHOWN DATE: 4-1983
 PN.04772 TAX MAP #42 SHEET 9 OF 9