

DIVISION
HOWARD COUNTY
DATE 3-24-83
JFD

- LEGEND:**
- 1. Contour Interval 2'±
 - 2. Existing Contour 150'
 - 3. Proposed Contour 150'
 - 4. Spot Elevation 150'
 - 5. Direction of Drainage
 - 6. Exist Storm Drain Line
 - 7. Exist Sewer Line
 - 8. Exist Water Line
 - 9. Retaining Wall
 - 10. Walk-Out Basement

VILLAGE OF OWEN BROWN SECTION 2 AREA 1 PLAT 4127

GENERAL NOTES:

1. The Land included in this plan is zoned: New Town (Attached)
2. The Lots shown on this plan are covered by Final Development Plan Phase 118 Part 1-A.
3. All coordinates are based on traverse controls for Columbia established by Maps, Inc., in 1965 by Purjum & Jeschke in 1968 which controls were tied to Maryland Bureau of Control Survey monuments and to U.S. Coast and Geodetic Survey monuments in the Columbia area.
4. The area covered in this submission is located on Tax Map No. 42.
5. The total area included in this plan is 1.636 Acres.
6. All road ways are public & existing.
7. Any damage to county owned rights of way or paving shall be corrected at developer's expense.
8. Number of Units shown: 20
9. Number of Parking Spaces: 40

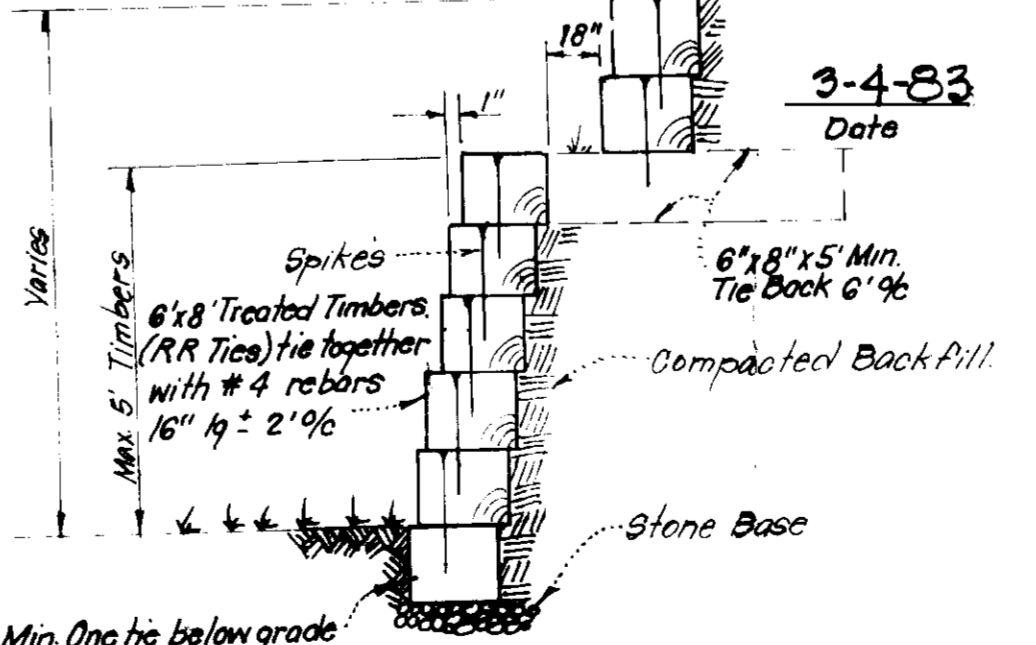
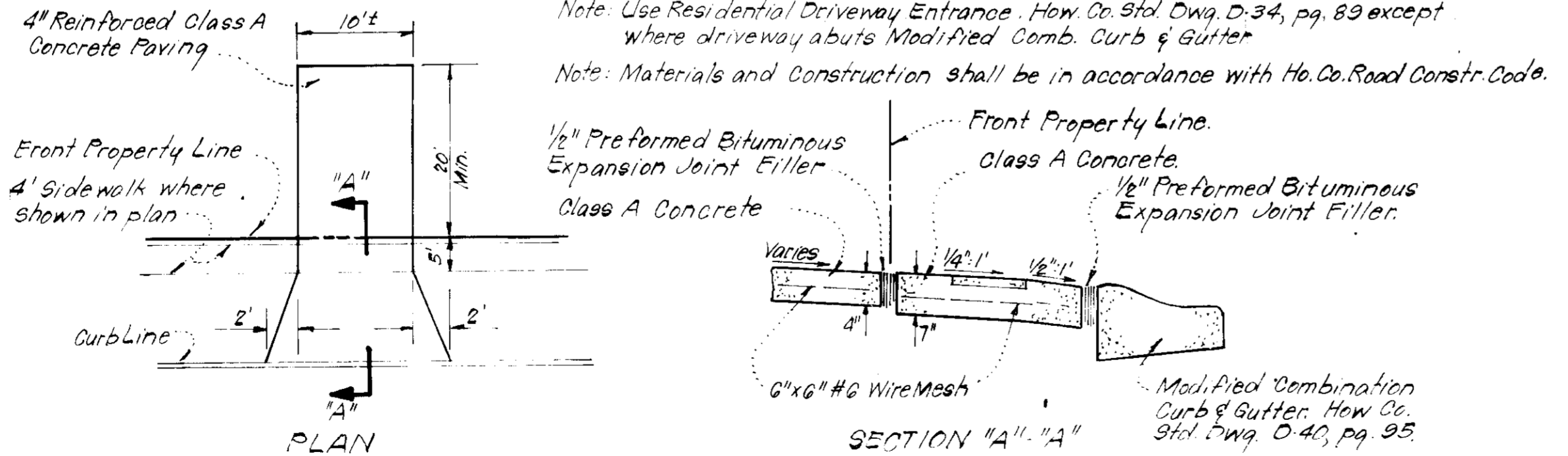
SURVEYOR'S CERTIFICATE

I hereby certify that the information contained hereon is the same as shown on previously approved SDP 80-37C with the following exceptions:

1. House Type and Grading has been revised on Lots A-165, A-166, A-169, A-172, A-173, A-178, A-183, A-190, A-193, A-196 and A-205 - A-208.
- I further certify that the Sediment & Erosion control measures, as previously approved, will not be affected, the grading is substantially the same as originally approved, the building setbacks comply with Howard County Zoning and Subdivision Regulations, and the lot has the same geometric configuration as shown on the respective recorded subdivision Plats.

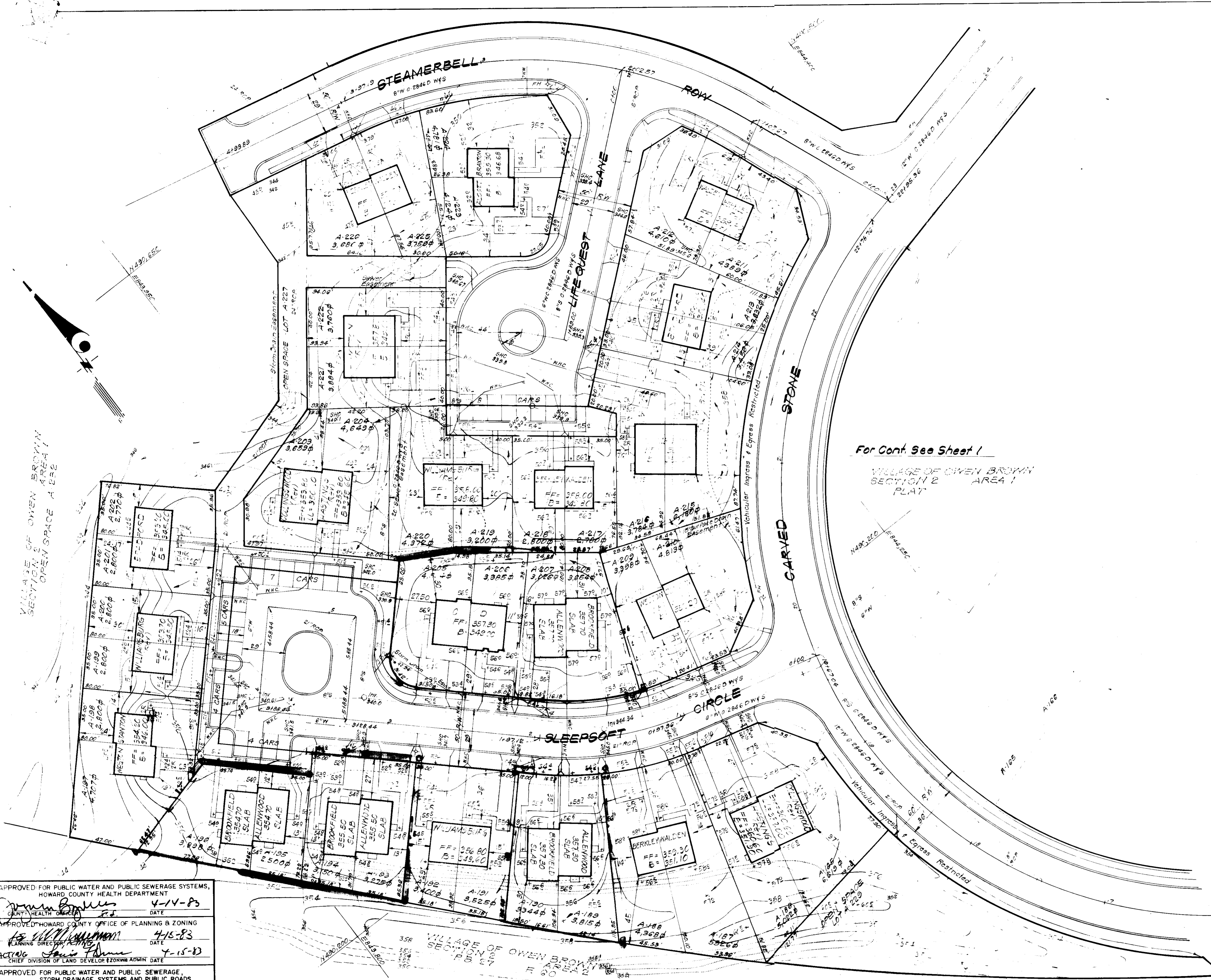
3-4-83
Date
DONALD B. SACKETT
Registered Land Surveyor
Md. No. 6059

The contractor or developer shall contact the Construction Inspection/Survey Division, 24 hours in advance of commencement of work at 992-2417 or 792-7272.



APPROVED FOR PUBLIC WATER AND PUBLIC SEWERAGE SYSTEMS,
HOWARD COUNTY HEALTH DEPARTMENT
DATE 4-14-83
APPROVED HOWARD COUNTY OFFICE OF PLANNING & ZONING
DATE 4-15-83
APPROVED FOR PUBLIC WATER AND PUBLIC SEWERAGE,
STORM DRAINAGE SYSTEMS AND PUBLIC ROADS
HOWARD COUNTY DEPARTMENT OF PUBLIC WORKS
DATE 4-8-83

<p>CLARK • FINEROCK & SACKETT ENGINEERS • PLANNERS • SURVEYORS</p>		
DESIGNED J.M.E.	REVISED SITE DEVELOPMENT PLAN LOTS A-165, A-166, A-169 thru A-172, A-175 thru A-178, A-180, A-190, A-193 thru A-196 and A-205 thru A-208	SCALE 1" = 30'
DRAWN J.M.E.	COLUMBIA VILLAGE OF OWEN BROWN SECTION 2 ELECTION DISTRICT HOWARD COUNTY, MARYLAND	DRAWING 1 of 2
CHECKED J.M.E.	FOR: IMG. HOMES LIMITED Suite A, RTE. 108, 8930 Oakland Ridge Business Pk. Columbia, Md. 21045	JOB NO. 83-019
DATE Feb. 1983		FILE NO. 83-019-X



For Cont. See Sheet 1
 VILLAGE OF OWEN BROWN
 SECTION 2 AREA 1
 PLAN

APPROVED
 DIVISION OF LAND DEVELOPMENT
 ZONING ADMINISTRATION
 HOWARD COUNTY, MARYLAND
 DATE 3-24-83
 [Signature]

APPROVED FOR PUBLIC WATER AND PUBLIC SEWERAGE SYSTEMS,
 HOWARD COUNTY HEALTH DEPARTMENT
 [Signature] DATE 4-11-83
 COUNTY HEALTH OFFICER

APPROVED HOWARD COUNTY OFFICE OF PLANNING & ZONING
 [Signature] DATE 4-15-83
 PLANNING DIRECTOR

APPROVED FOR PUBLIC WATER AND PUBLIC SEWERAGE,
 STORM DRAINAGE SYSTEMS AND PUBLIC ROADS
 HOWARD COUNTY DEPARTMENT OF PUBLIC WORKS
 [Signature] DATE 4-8-83
 DIRECTOR

APPROVED FOR PUBLIC WATER AND PUBLIC SEWERAGE SYSTEMS,
 HOWARD COUNTY HEALTH DEPARTMENT
 [Signature] DATE 4-8-83
 COUNTY HEALTH OFFICER

Note: For Bearings & Distances for individual lots see Plats 4303 & 4302

CLARK • FINEROCK & SACKETT ENGINEERS • PLANNERS • SURVEYORS 11315 ELLIOTT DRIVE • GREENBELT, MARYLAND 20884 301-591-4300		SCALE 1"=30'
DESIGNED J.M.E.	REVISED SITE DEVELOPMENT PLAN LOTS A-165, A-166, A-169 thru A-172, A-175 thru A-178 A-189, A-190, A-193 thru A-196 and A-205 thru A-208	DRAWING 2-2
DRAWN J.W.	COLUMBIA	JOB NO. 83-019
CHECKED J.M.E.	VILLAGE OF OWEN BROWN SECTION 2 AREA 1 ELECTION DISTRICT HOWARD COUNTY, MARYLAND	FILE NO. 83-019 X
DATE Feb, 1983	FOR: IMG. HOMES LIMITED Suite A, RTE 108, 8930 Oakland Ridge Business Park Columbia, Md. 21045	

SDP-83-125c